

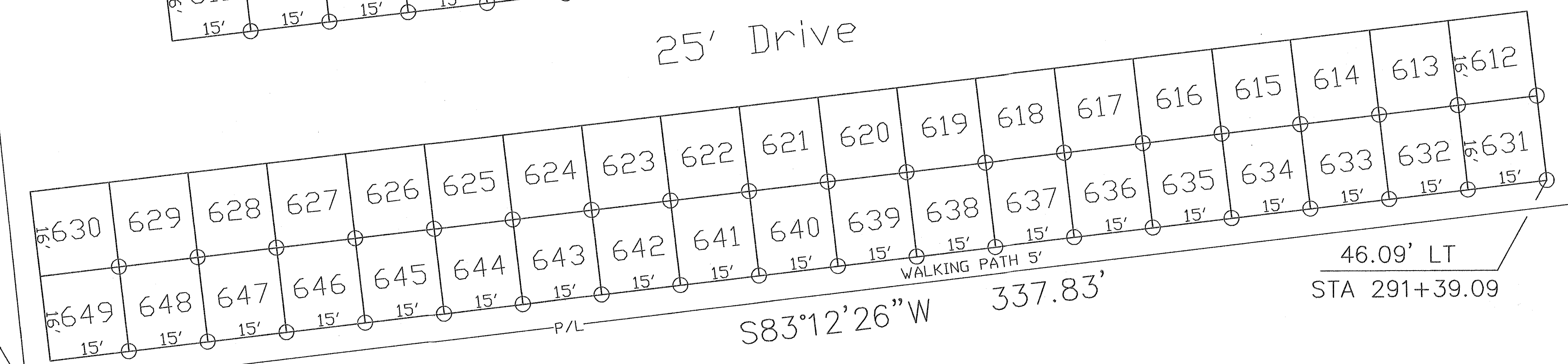
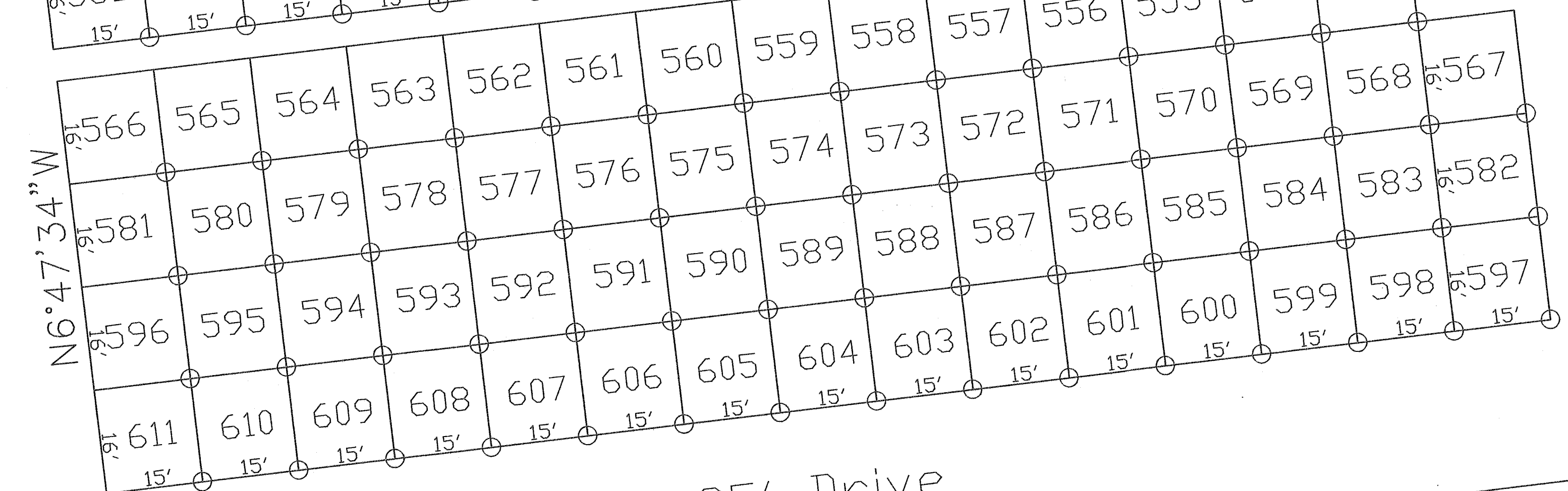
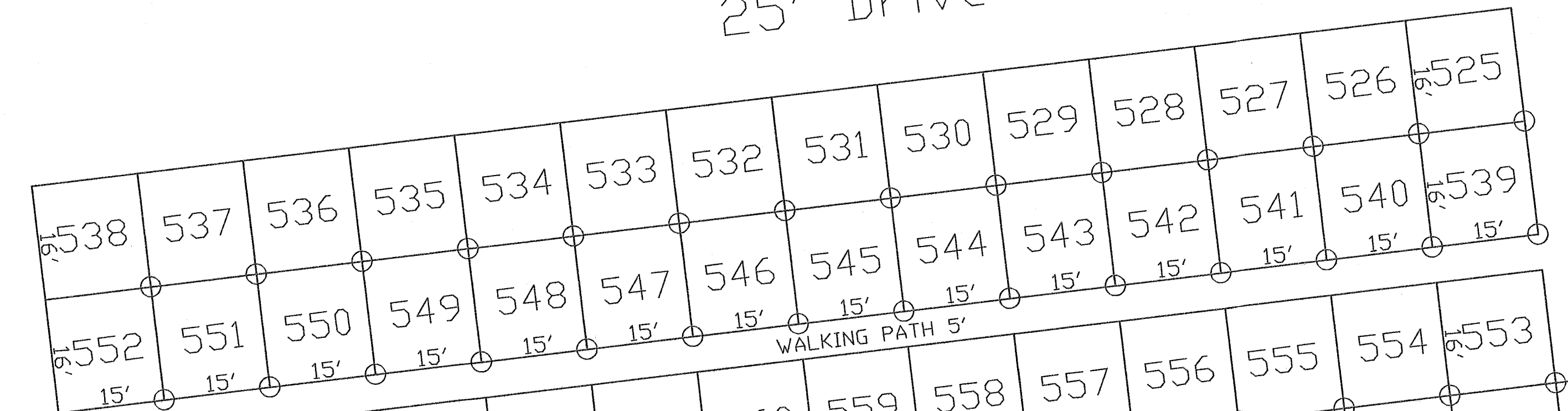
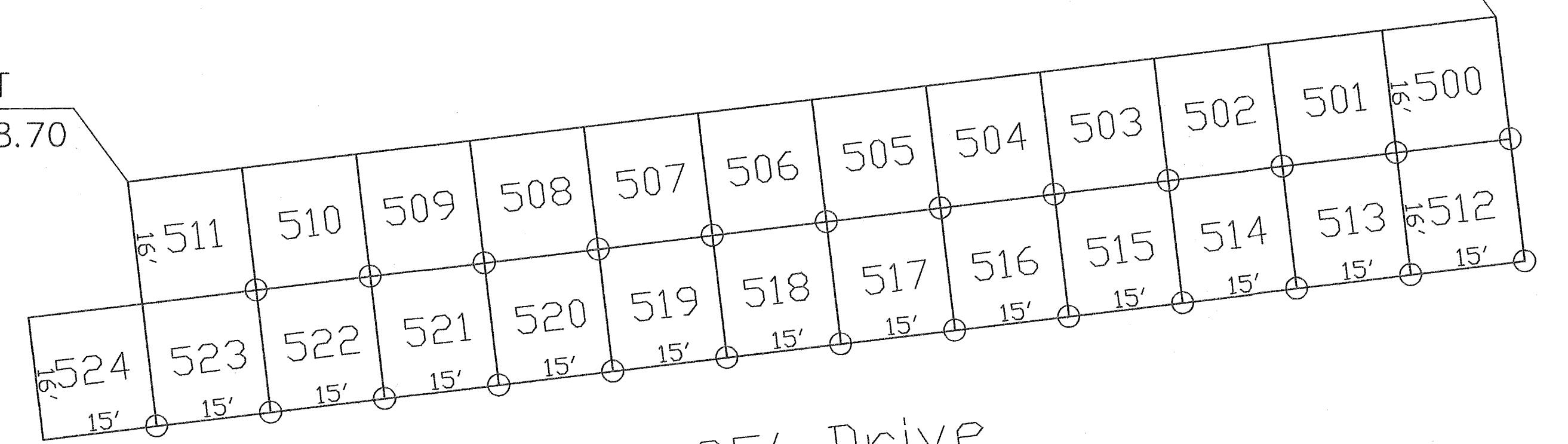
STA 294+11.85 - C.R. 12 (F.B. 703, pg. 37)  
 STA 53+10.10 - C.R. 50 (F.B. 703, pg. 19)

2015 ADDITION  
 TO  
 EQUALITY CEMETERY  
 LOTS 500-649  
 VMS 13199  
 RUSHCREEK TOWNSHIP  
 LOGAN COUNTY, OHIO

County Road 50 (60')  
 N83°12'26"E 282.64'

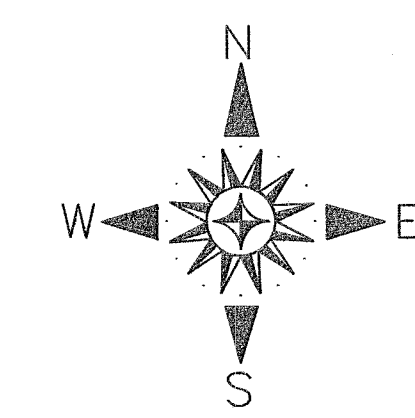
STA 50+27.46  
 30.00'  
 C/L  
 R/W

61.61' RT  
 STA 50+88.70  
 61.61' RT  
 STA 52+68.70



County Road 12 (60')  
 S17°07'51"E 286.25'

25' Drive



○ NUMBERED CAST ALUMINUM MARKERS SET ON THE SOUTHEAST LOT CORNERS.

LEGEND:

- ▣ 3/4" Square Iron Pin In monument Box
- ⊙ Railroad spike set
- 5/8" iron pin set (capped "Logan County Engineer")

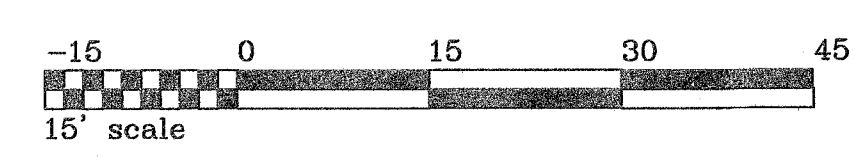
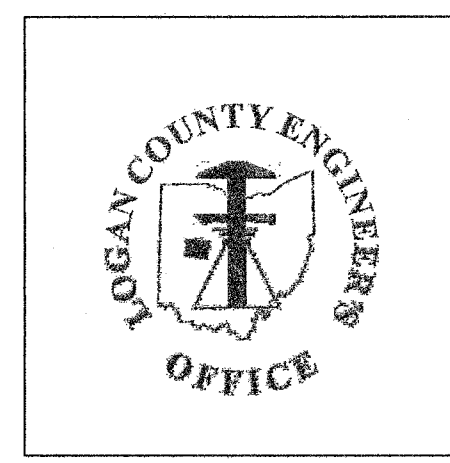
Reference: R-9354

N6°00'53"W 281.63'

46.09' LT  
 STA 291+39.09

30.50'  
 STA 291+25.60

S83°12'26"W 337.83'



Date: \_\_\_\_\_  
 Scale: Scale 1" = 15'  
 Drawn by: GTD