



Calculations For LOG 463 1838

C-21

Computed By JRH

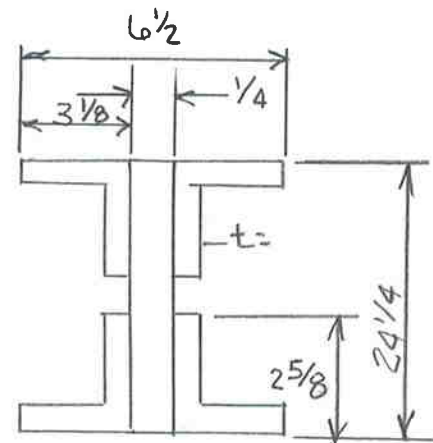
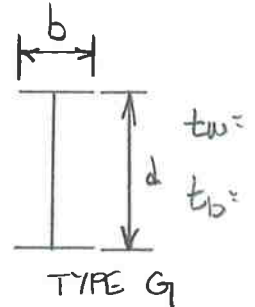
Date 10-20-10

Sheet 2 of

Checked By

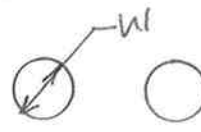
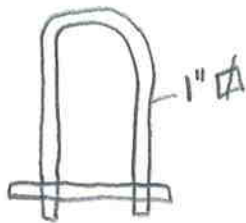
Date

MEM	d	b	tw	tb	W	ft	TYPE
1	10	2 1/2	0.339	0.375	14 1/2	3/8 x 15 1/8	A
2	13/4	1/2			1"		E
3	2 1/2	5/8					C
4	6	13/4	0.219		7		B
5	2 1/2	5/8					C
6	5	15/8	0.235		8 3/8		B
7	2 1/2	1/2					C
8	1	1					D
9	5	1 3/4	0.217	1/4	8 3/8		B
10					7/8		E
11	13/4	1/2					C
12	5	13/4	0.200	1/4	8 3/8		B
TC1							A
TC2							A
TC3							A
TC4							A
BC1	3	3/4					C
BC2	3	3/4					C
BC3	3 1/2	3/4					C
BC4	4 1/4	7/8					C
BC5	5	1					C
FB							
JOIST	10 3/8	5 3/4	0.254	0.418			G
13	13/4	1/2					C
14	1 1/8	1 1/8					D

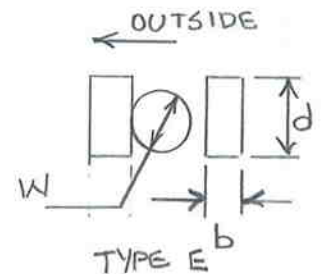


FLOOR BEAM
 RIVETS BEGIN 1/4" FROM END
 19R @ 2 1/2" O.C. TOP + BOT
 5R @ 4" O.C. NOTE: 1/2 BEAM
 11R @ 6" O.C. SYMMETRICAL

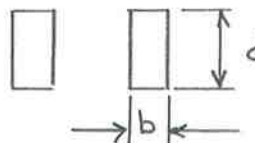
FLOOR BEAM HANGER



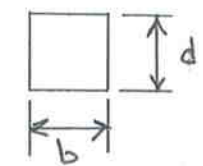
TYPE F



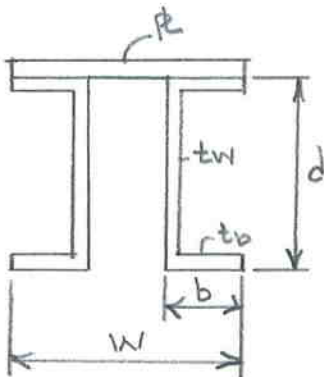
TYPE E



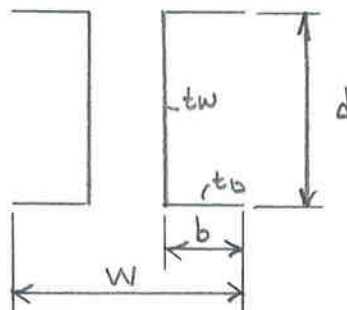
TYPE C



TYPE D



TYPE A



TYPE B



Calculations For LOG 463 1838

T-21

Computed By

JRH

Date

10-20-10

Sheet

3

of

Checked By

Date

PIC

- 65 ELEV S.W.
- 64 FLOOR BEAM EAST END
- 63 MEM 1 N.E. TRUSS
- 62 WEST SIDE OF MEM. 12 N. TRUSS
- 61 EAST SIDE OF MEM. 12 N. TRUSS
- 60 MEM 2 EAST END S. TRUSS
- 59 MEM 11 WEST END S. TRUSS
- 58 MEM 4 LOWER PIN TYPICAL
- 57 MEM 2 WEST END LOOKING EAST LOWER
- 56 MEM 2 WEST END LOOK EAST HIGHER
- 55 BEARING TYPICAL S.W CORNER
- 54 DATE AND BUILDER SIGN
- 53 POETAL LOOKING EAST



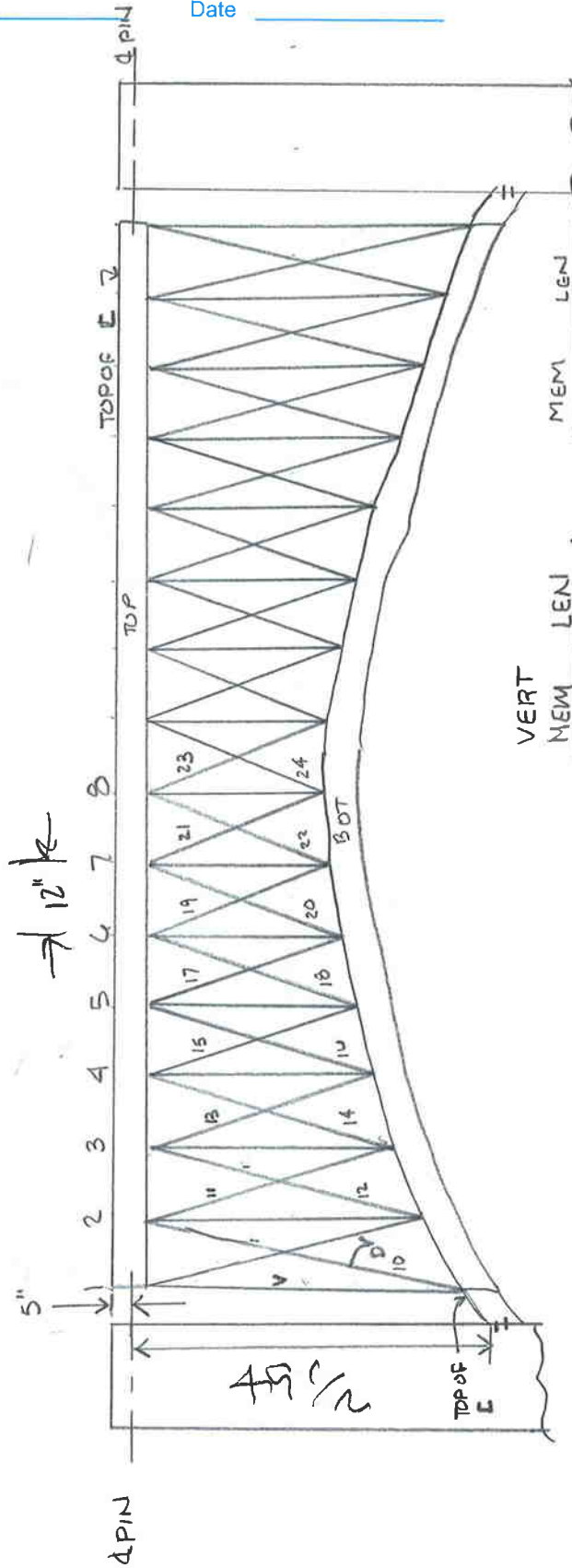
Calculations For Log 4631838

T-21

Computed By JRH
 Checked By _____

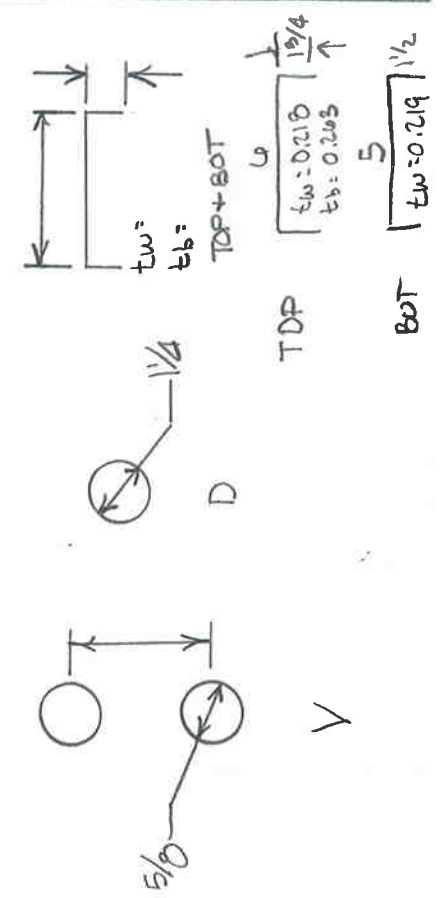
Date 10-21-10
 Date _____

Sheet _____ of _____



MEM	LEN
13	
14	35 3/4
15	20
16	27 1/2
17	
18	22 3/4
19	23 3/4
20	23 3/4
21	
22	23 3/4
23	23
24	

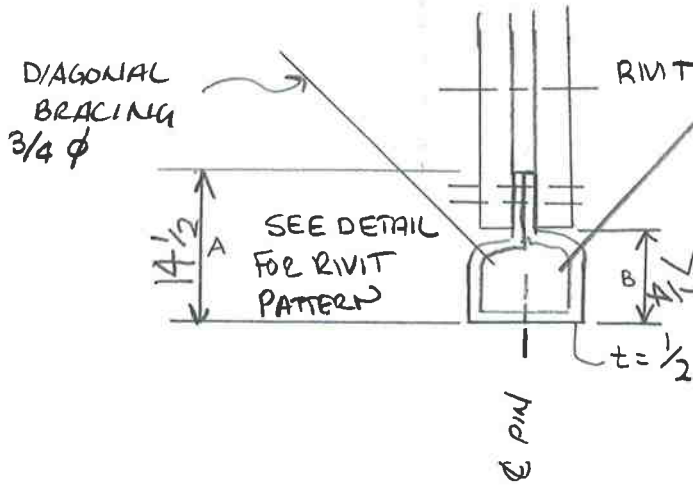
VERT MEM	LEN
1	49
2	40 3/4
3	34 3/4
4	29 3/4
5	25 1/2
6	20 3/4
7	18 1/2
8	
9	42 1/2
10	48
11	36 3/4
12	



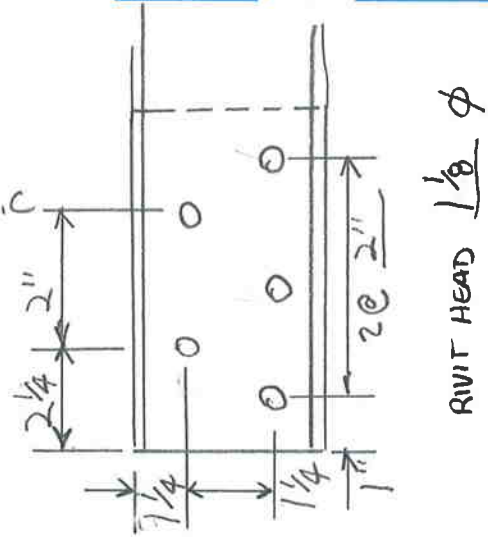
Calculations For LOG 4631838 T-21

Computed By JRH Date 10-21-16
 Checked By _____ Date _____

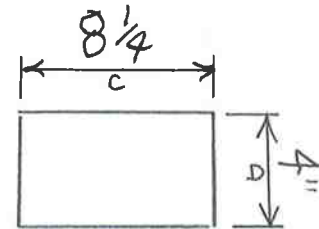
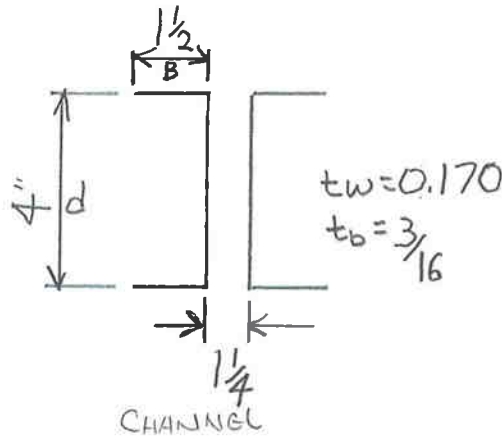
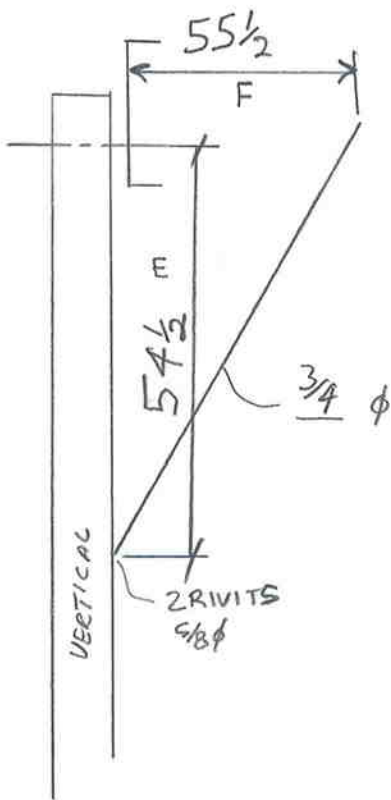
Sheet _____ of _____



CROSS BRACING



RIVET HEAD 1 1/8 φ



OAL HT = 21 PIN TO PIN