

LAKE
TOWNSHIP
1958

INDEX

SECTION	TOWN	RANGE	PAGE	VIRGINIA MILITARY SURVEY	PAGE
27	4	14	1	2873	9
27	4	14	PART 16	3317	10
28	4	14	2	3322	11
33	4	14	1	3324	12
34	4	14	2	3442	10
34	4	14	PART 3	3683	8
36	4	14	4	4399	8
31	3	15	5	4478	7
				4498	6
				5045	6
				5045 PART	16
				5245	8
				9572	6
				9883	12
				9884	11
				{ 10086	7
				{ 10198	
				12485	12

ALLOTMENTS & SUBDIVISIONS _____ PAGE

CAMPBELL ALLOTMENT _____ 14

CLARKS PARK ADDITION (NORTH PART) _____ 13

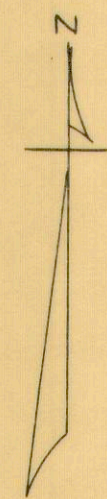
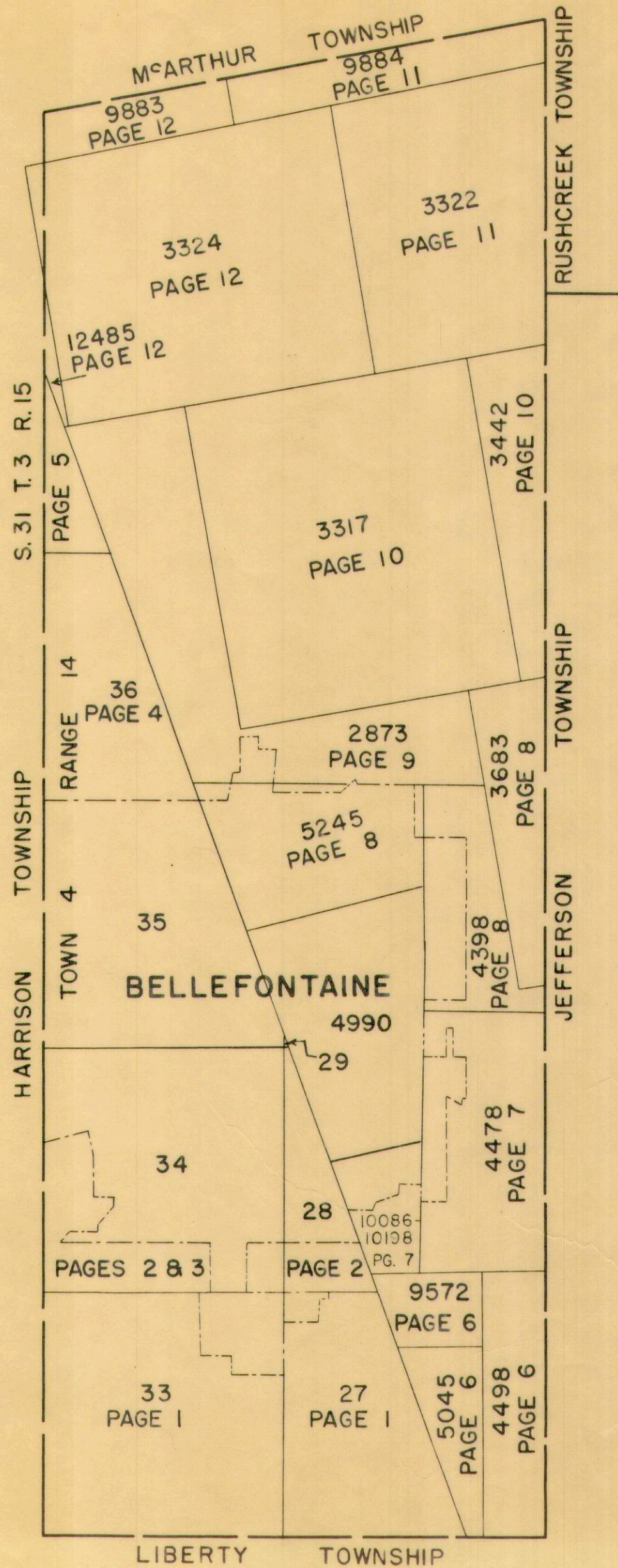
HOLLY HILL SUBDIVISION (Vacated - 1965) 17

WOODLAND SUBDIVISION _____ 15

Haidi Road Allotment _____ 18

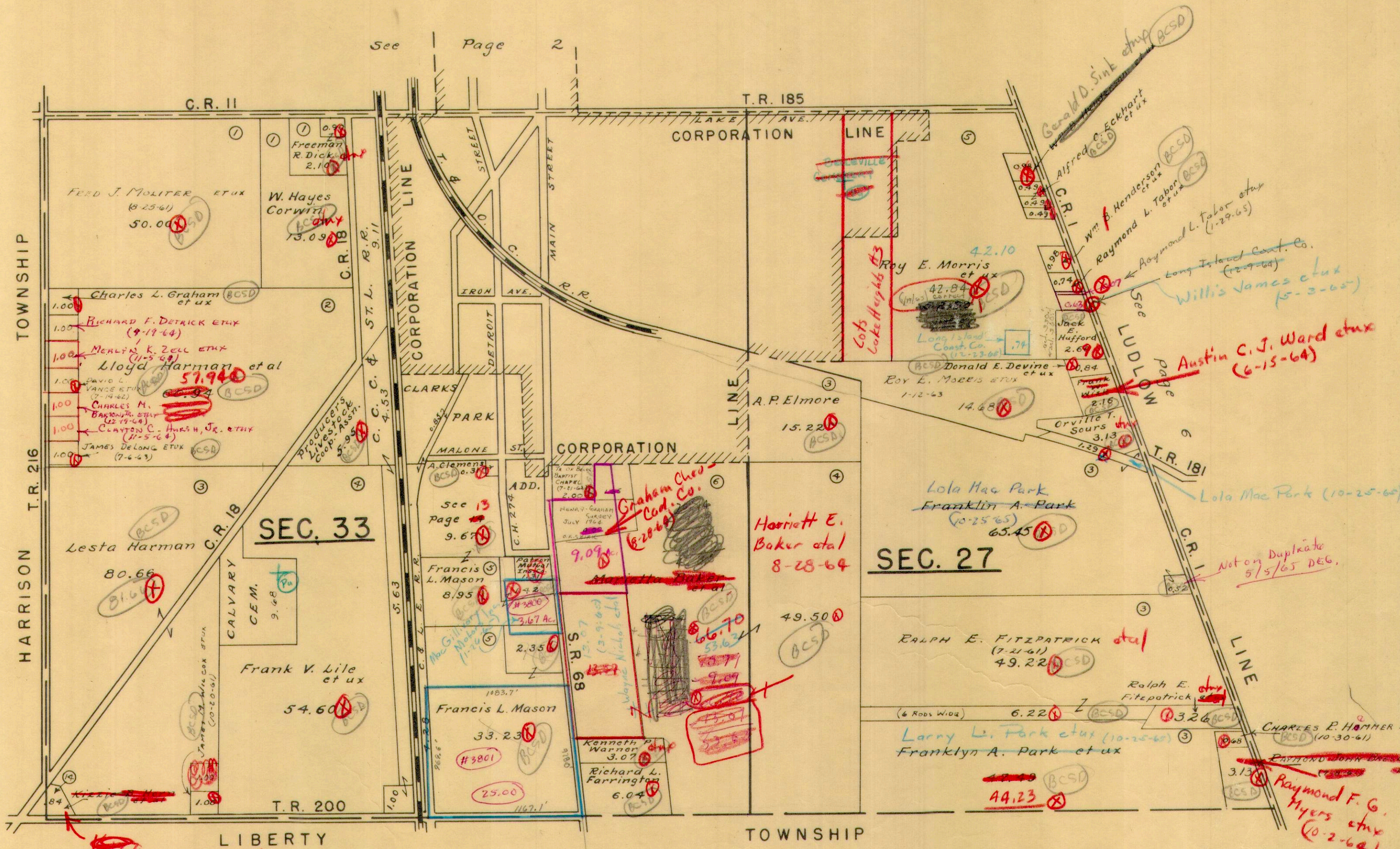
LAKE TOWNSHIP INDEX MAP

CORRECTED TO:
January 1, 1963
January 1, 1964
January 1, 1965
January 1, 1966



SECTION 27 TOWN 4 RANGE 14
SECTION 33 TOWN 4 RANGE 14

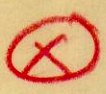
SCALE 10 CHAINS = 1 INCH



Donald W. Horn et ux
(10-1-64)

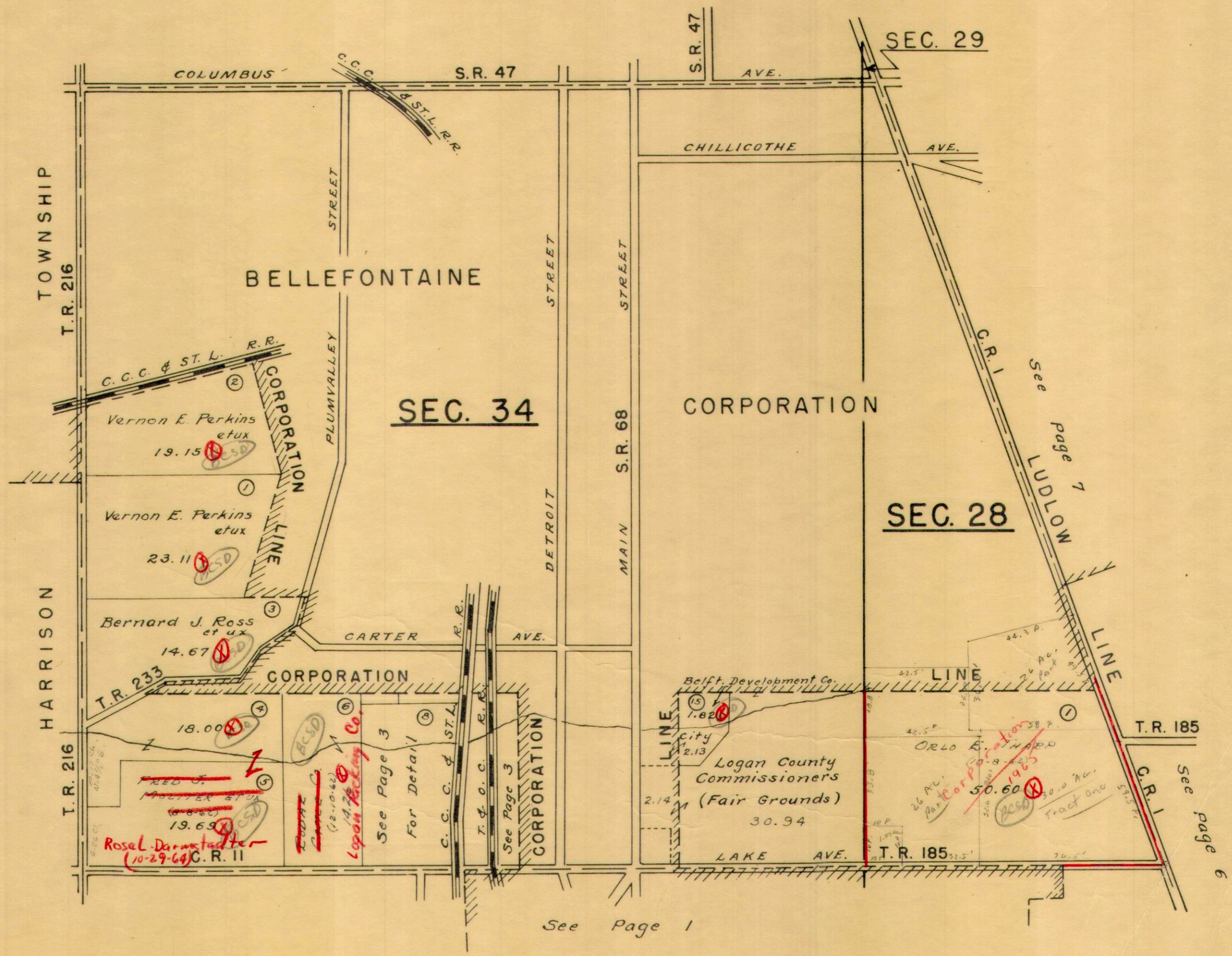
Mason	33.23
	+ 2.35
	35.58
	+ 8.95
	44.53
	+ 1.42
	45.95
	- 3.67
	42.28
	- 25.00
	17.28

OCT. 5, 1960
H.S.D.



SECTION 28	TOWN 4	RANGE 14
SECTION 29	TOWN 4	RANGE 14
SECTION 34	TOWN 4	RANGE 14

SCALE 10 CHAINS = 1 INCH



30.0
 26.0
 1.0
 57.0
 -16.4
 50.6

Handwritten: Fred J. Moxter et ux
 19.69
 Rosal Darmstadter
 10-29-64 C.R. II

Handwritten: Logan Packing Co.
 14.22
 See Page 3 For Detail

Handwritten: ORLO B. HARRIS
 20-8-1965
 50.60
 26 Ac. Part
 30.0 Ac. Tract One

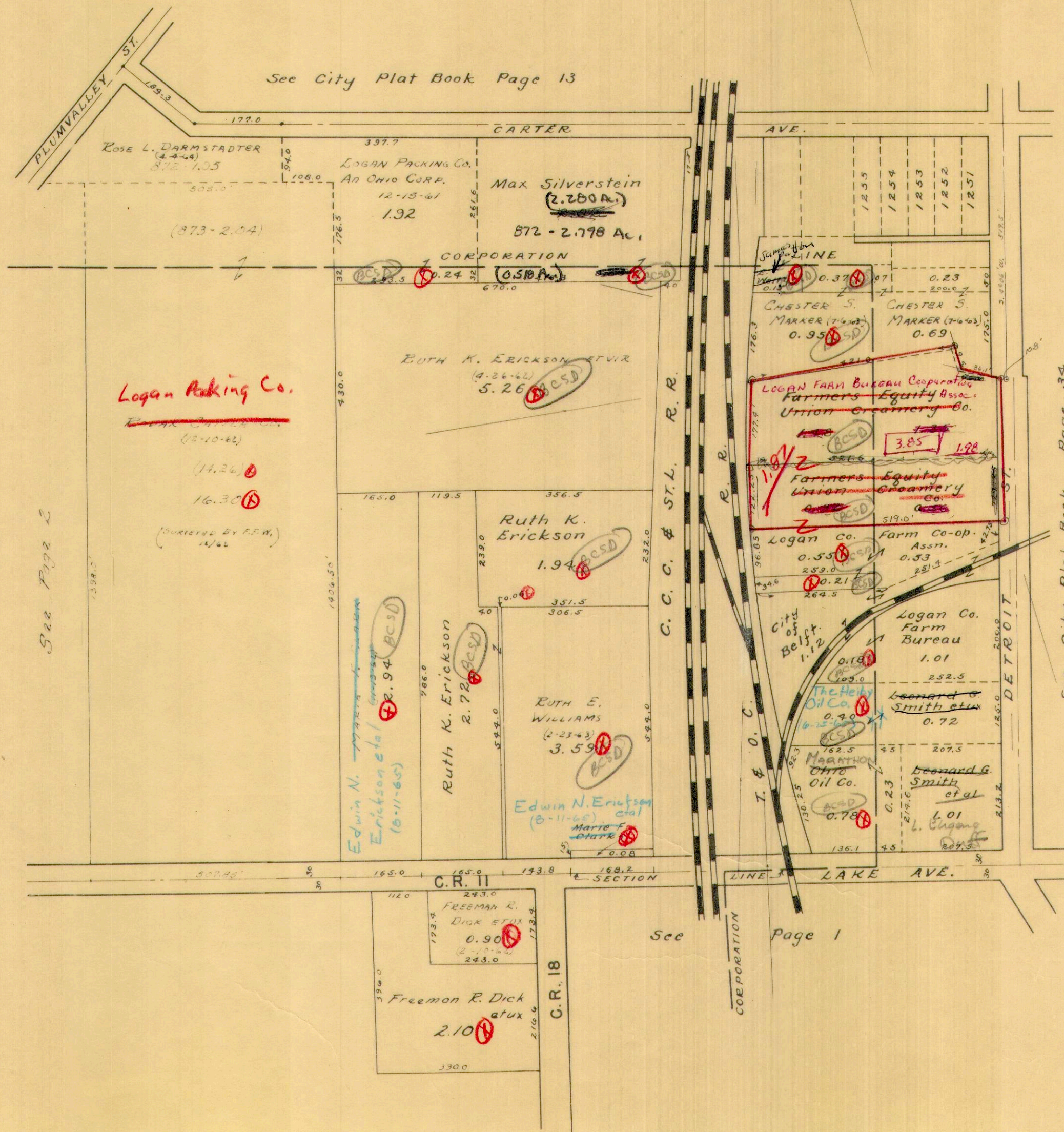
See Page 1

See page 9

LAKE TOWNSHIP

SECTION 34 TOWN 4 RANGE 14 (PART)

SCALE : 1 INCH = 200 FEET



Logan Packing Co.

See Page 2

2.83
1.08
3.91

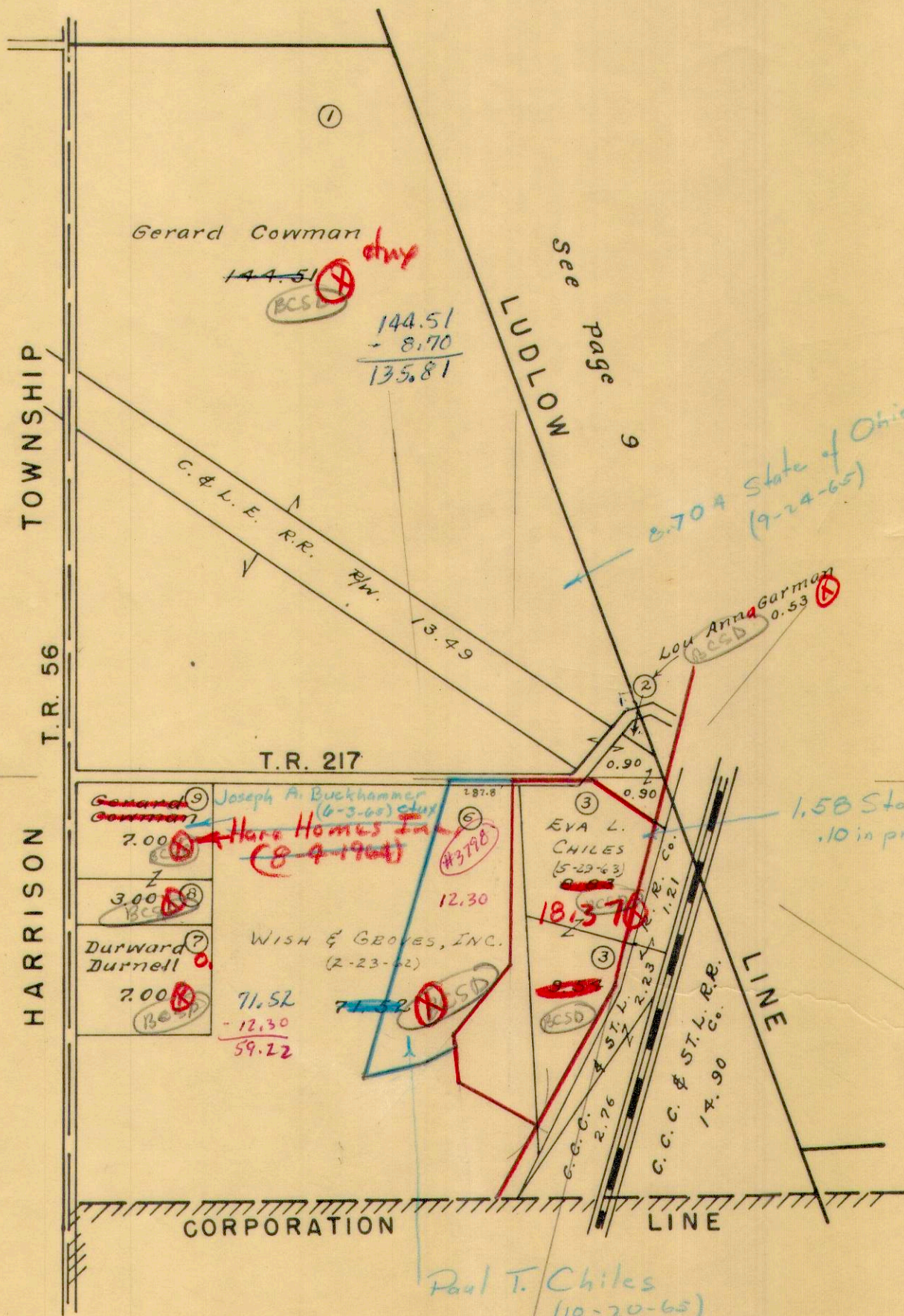
.92
56
148



LAKE TOWNSHIP
SECTION 36 TOWN 4 RANGE 14

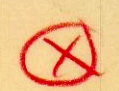
SCALE 10 CHAINS = 1 INCH

See Page 5



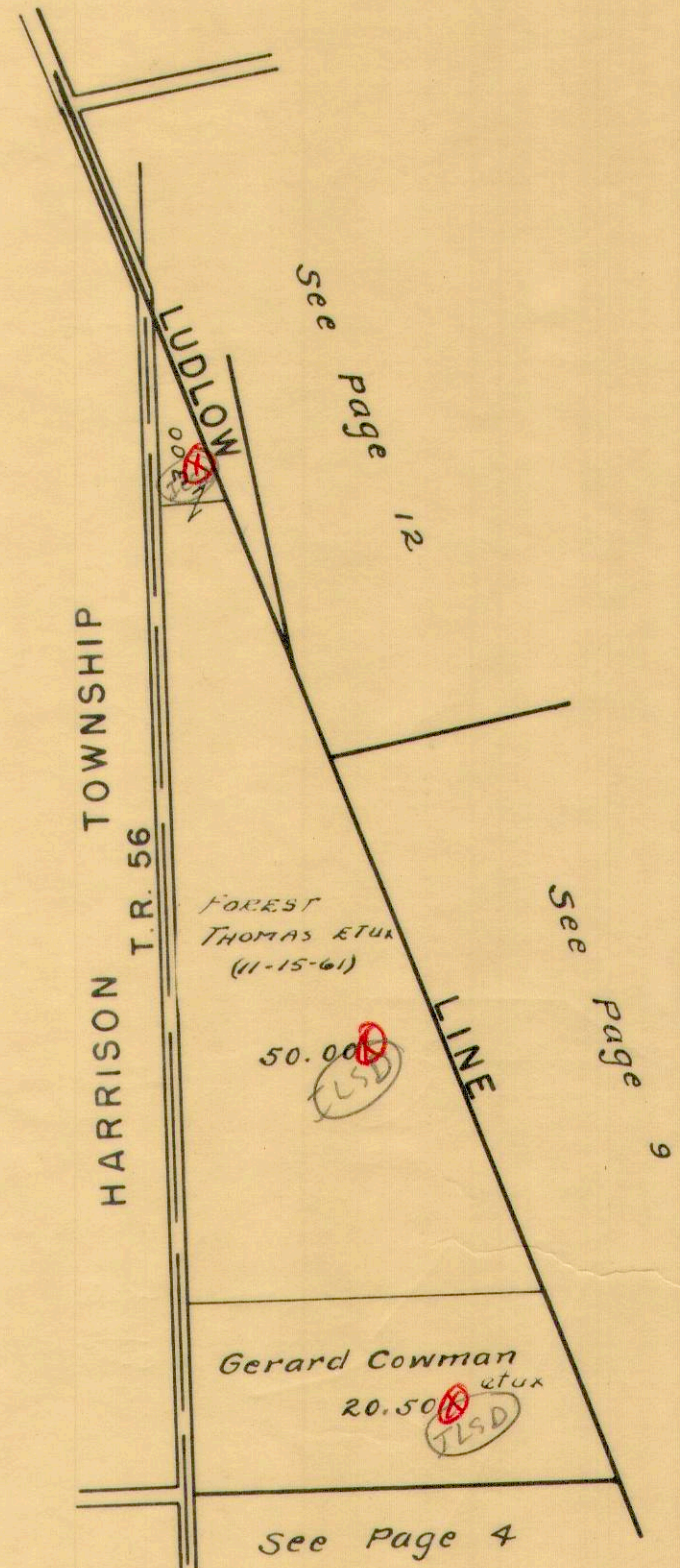
Eva L. Chiles
18.37 Ac.
Deed

8.83
9.54
<u>18.37</u>
8.83
1.21
<u>10.04</u>
90
<u>10.94</u>



SECTION 31 TOWN 3 RANGE 15

SCALE 10 CHAINS = 1 INCH



Oct. 10, 1960
H.E.D

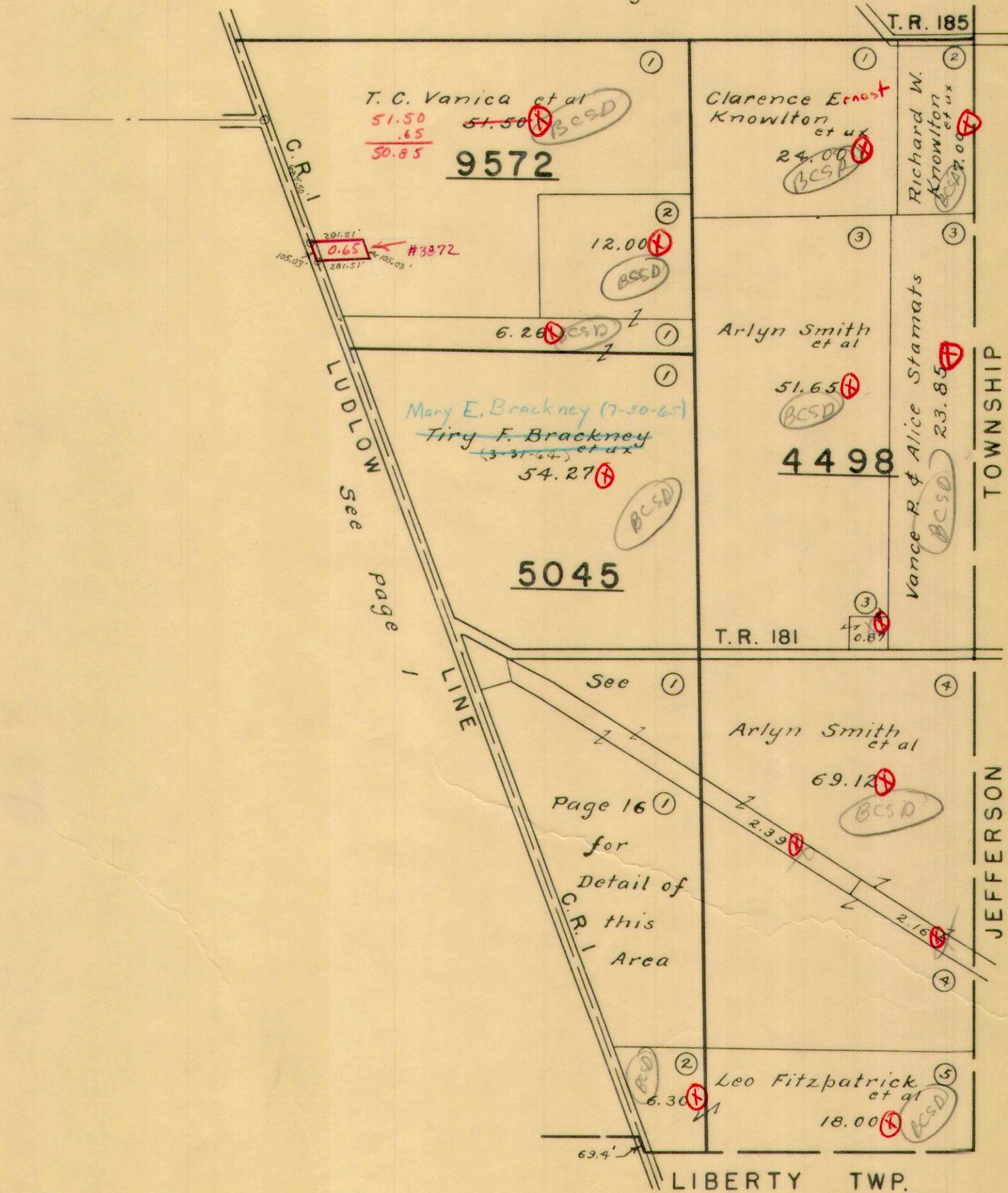
⊗

LAKE TOWNSHIP
VIRGINIA MILITARY SURVEYS

4498
5045
9572

SCALE 10 CHAINS = 1 INCH

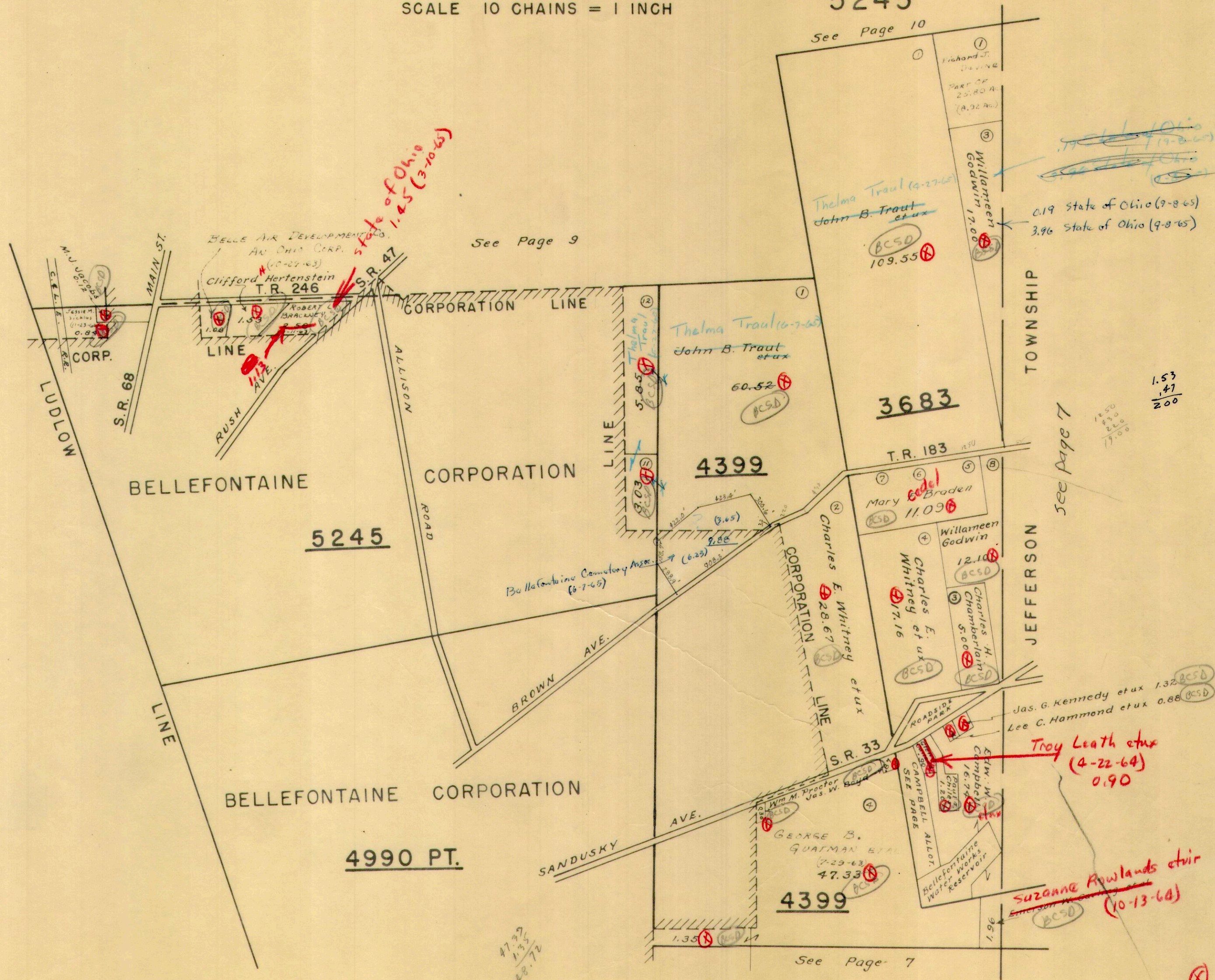
See Page 7



LAKE TOWNSHIP
VIRGINIA MILITARY SURVEYS

3683
4399
4990 PT.
5245

SCALE 10 CHAINS = 1 INCH



NOV. 3, 1960
N.E.D.

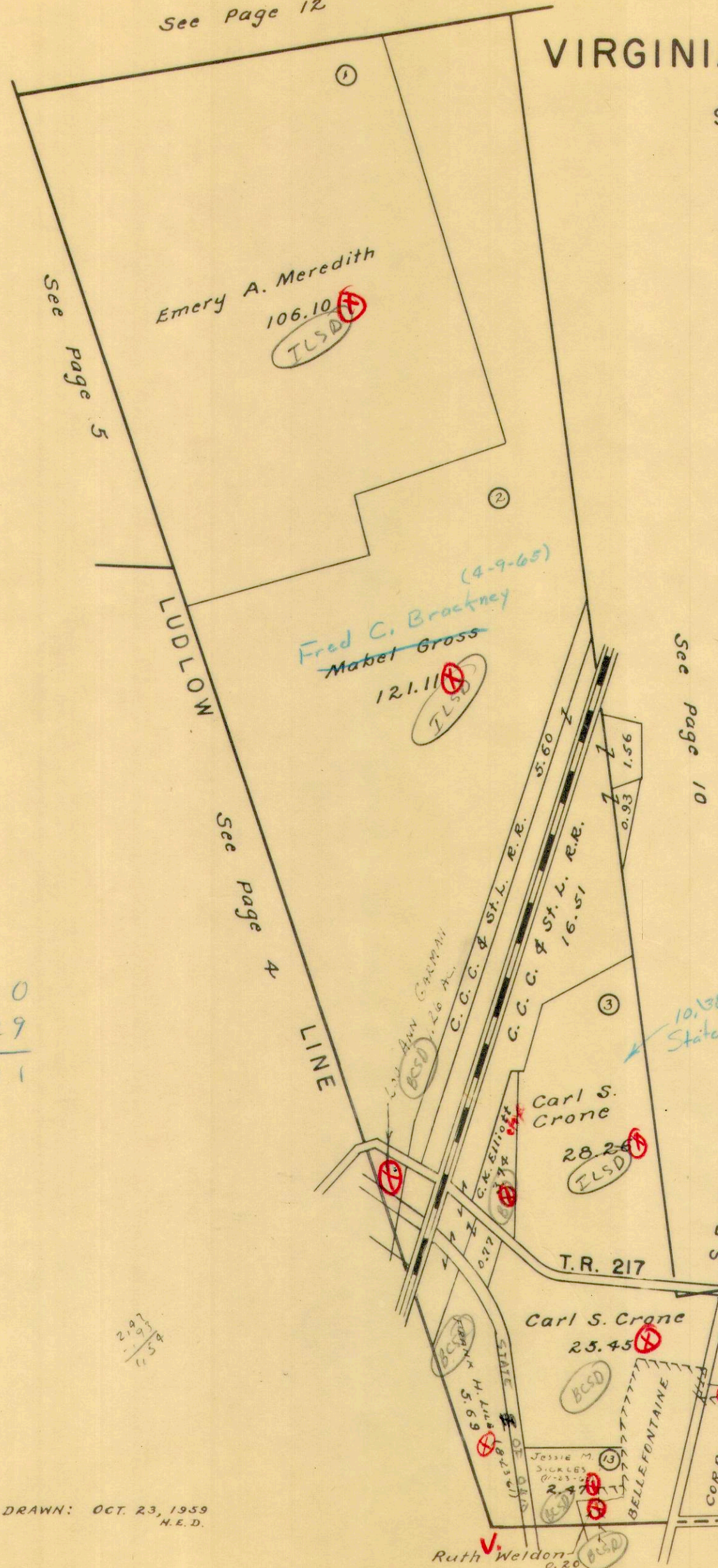
47.33
1.35
48.72

1.53
1.47
2.00

⊗

VIRGINIA MILITARY SURVEY 2873

SCALE 10 CHAINS = 1 INCH



REFERENCE No.	NAME	ACRES
1	Georgia Ward	0.42 (BCSD)
2	Bernice Lucille Rutledge (2-17-63)	1.34 (BCSD)
3	R. H. Branham	1.10 (BCSD)
4	Deeta Nogle	1.11 (BCSD)
5	R. Voesting	1.05 (BCSD)
6	Lawrence F. Knight	0.92 (BCSD)
7	Stephen Whitlatch	0.56 (BCSD)
8	Stephen Whitlatch	0.59 (BCSD)

0.75 Ac. Raymond M. Adams et ux (8-26-64)
 State of Ohio (0.171 Ac.) (11-6-64)

7.40
 - 29
 7.11

DRAWN: OCT. 23, 1959
 N.E.D.

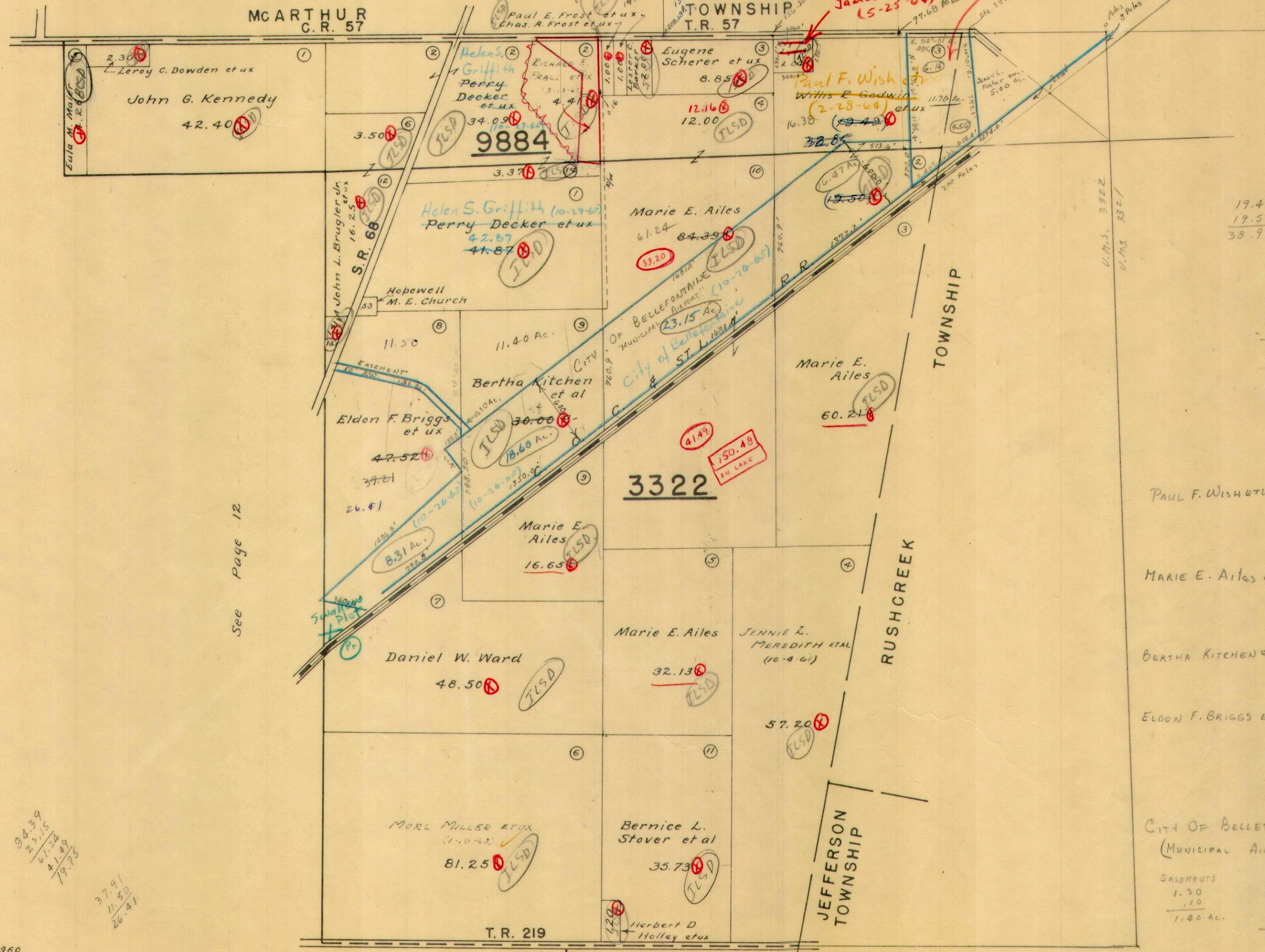
Not on Dupl.
 5/8/65

LAKE TOWNSHIP VIRGINIA MILITARY SURVEYS

SCALE 10 CHAINS = 1 INCH

3322
9884

1274.4
656.4
618.0



DONALD LEE YODER
(11-2-64) ETUX

James F. Teets
(5-25-64)

Paul F. Wish et ux
(2-28-64) et ux

9884

3322

4149
150.48
DU LAKE

See Page 12

94.39
23.15
71.24
41.49
79.75

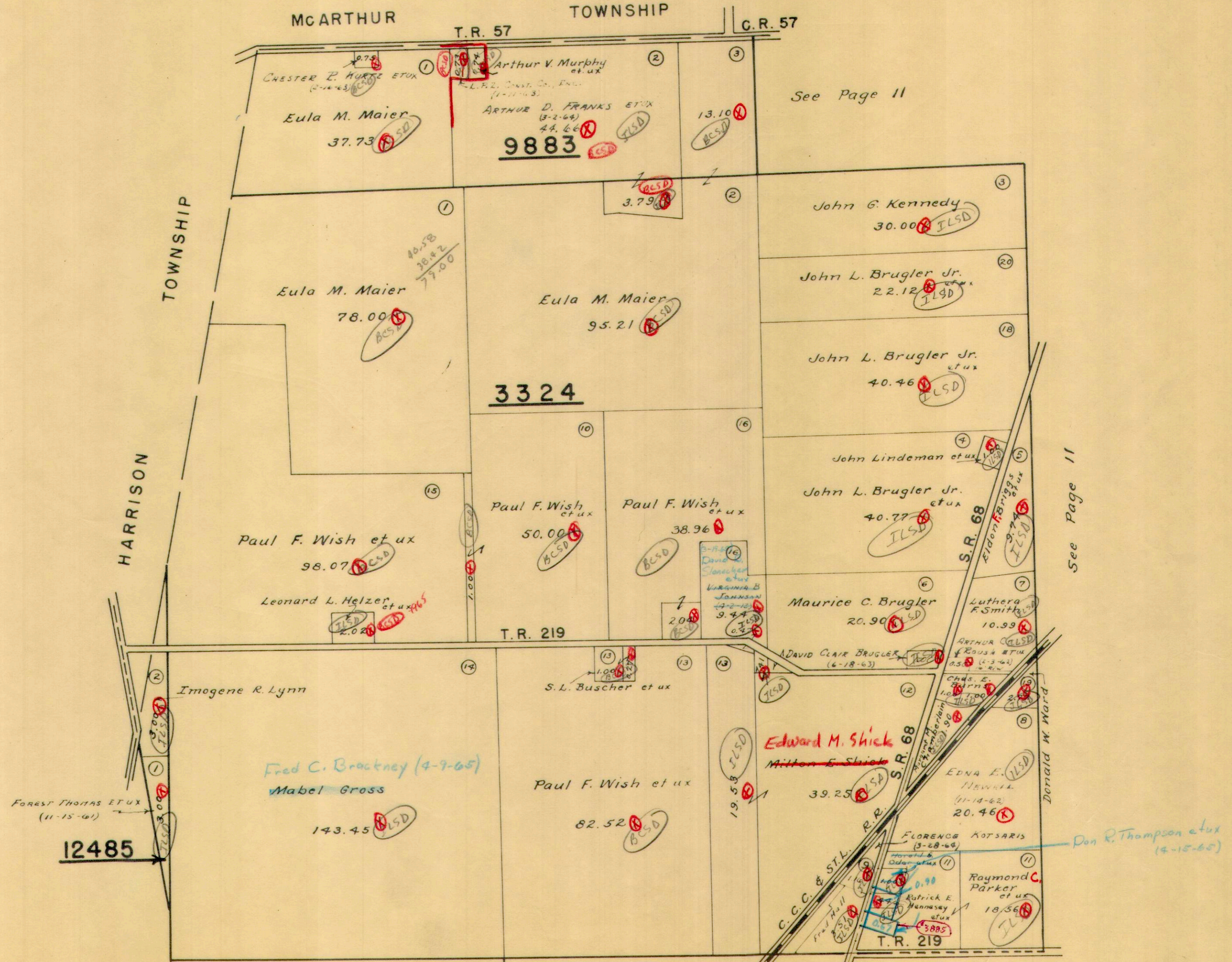
37.91
11.50
26.41

	19.49
	19.50
	38.99 Lake
	55.87
	- 38.99
	16.88
	3.31
	11.22
	PAUL F. WISH ETUX - 32.85
	- 16.47
	16.38
	MARIE E. AILES et ux - 84.39
	- 23.15
	61.24
	BERTHA KITCHEN ET AL 30.00
	- 18.60
	11.40
	ELDON F. BRIGGS ETUX - 47.52
	- 8.31
	39.21
	1.30
	37.91
	CITY OF BELLEFONTAINE (MUNICIPAL AIRPORT)
	EASEMENTS 8.31
	1.30 18.60
	.10 23.15
	11.40 AC. 16.47
	66.53 AC.



3324
9883
12485

SCALE 10 CHAINS = 1 INCH



LAKE TOWNSHIP — SECTION 33 TOWN 4 RANGE 14 PAGE 13
 CLARK'S PARK ADDITION N-PART

SCALE 100 FEET TO THE INCH

Note:
 Lots 3128 To 3156 incl. in Bellefontaine Corp.

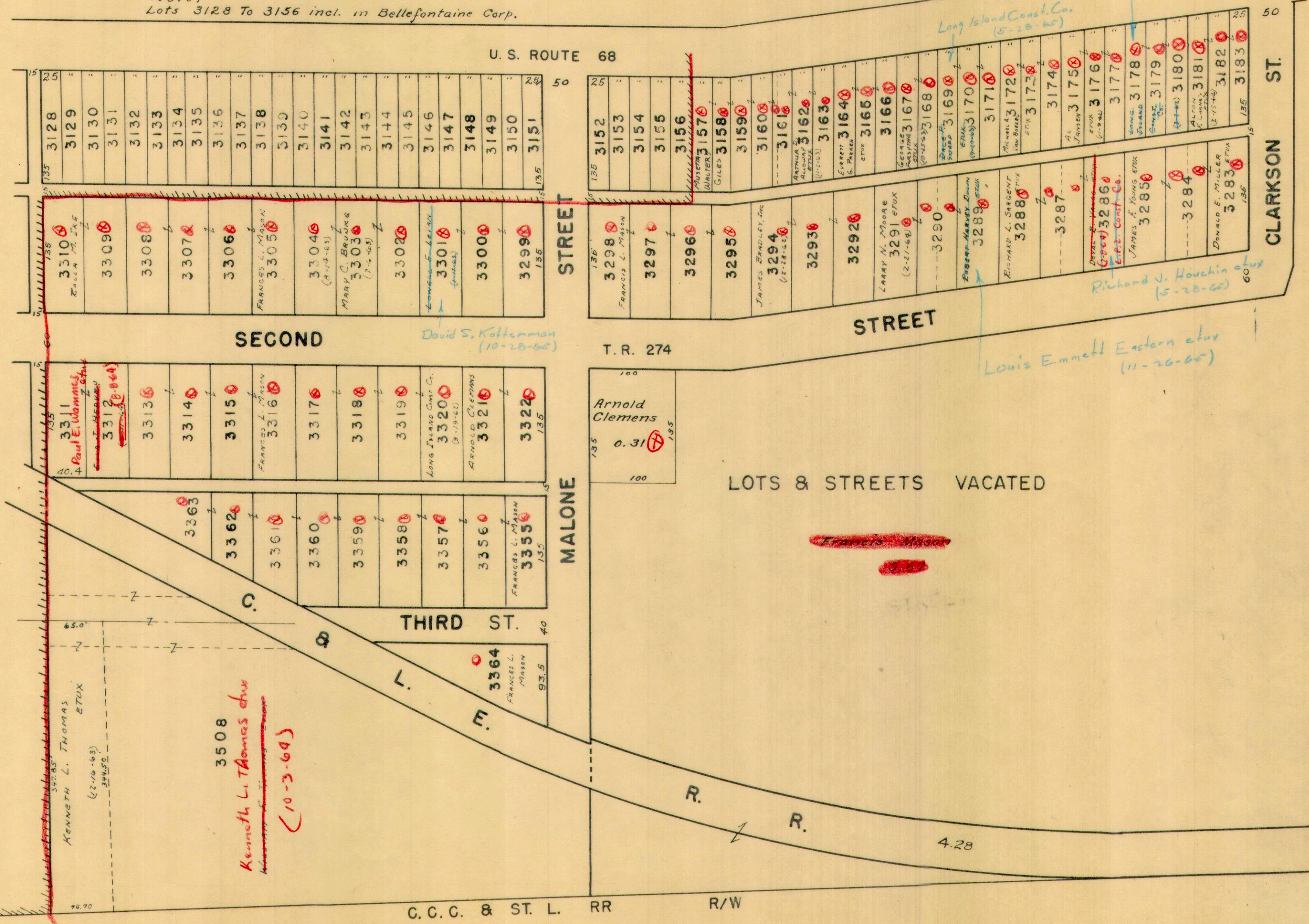
*William E. Carnes et ux
 (9-10-65)*

*Long Island Const. Co.
 (5-28-65)*

*Richard J. Houchin et ux
 (5-28-65)*

*Louis Emmett Eastern et ux
 (11-26-65)*

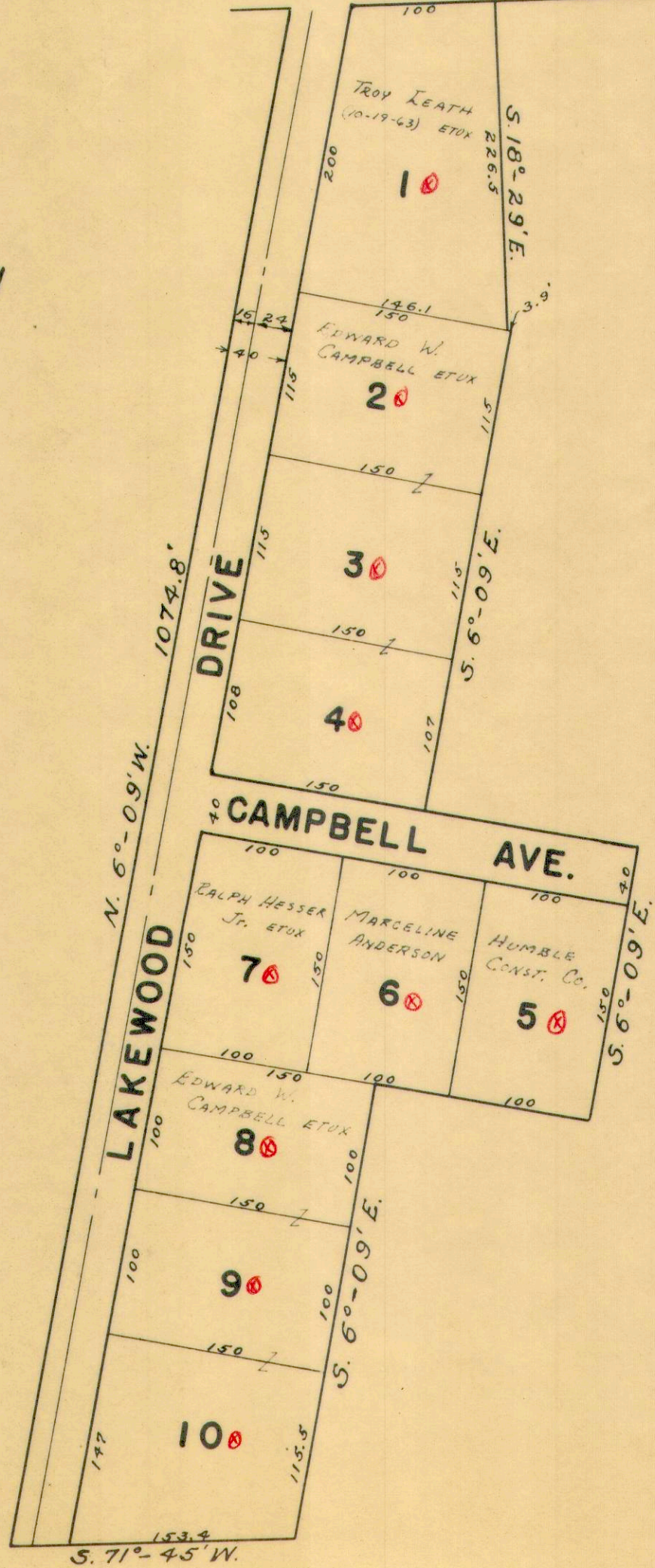
*David S. Kottenman
 (10-28-65)*



CAMPBELL ALLOTMENT
LAKE TOWNSHIP
V.M.S. 3683

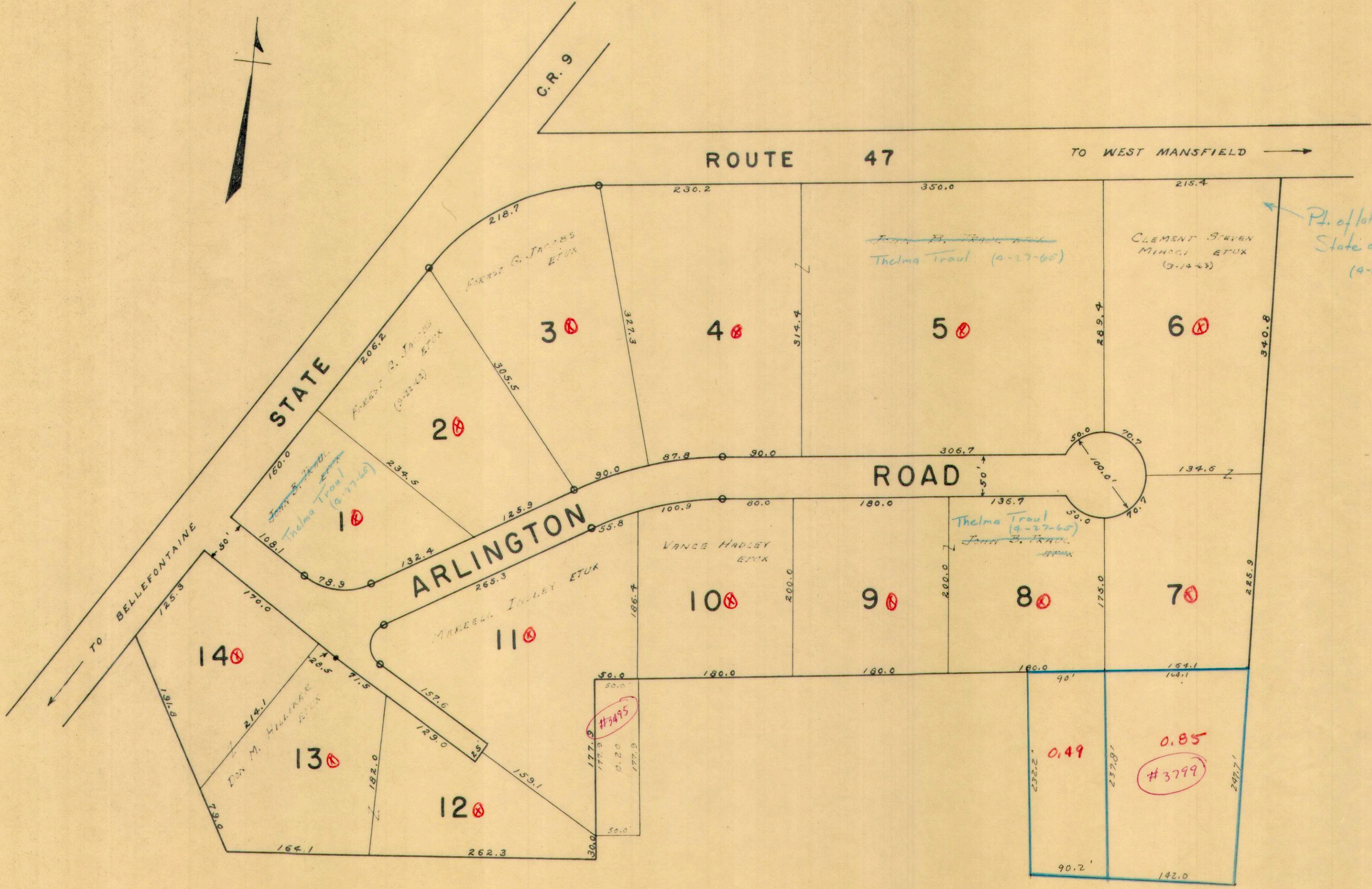
STATE ROUTE 33

N. 71°-31'E.



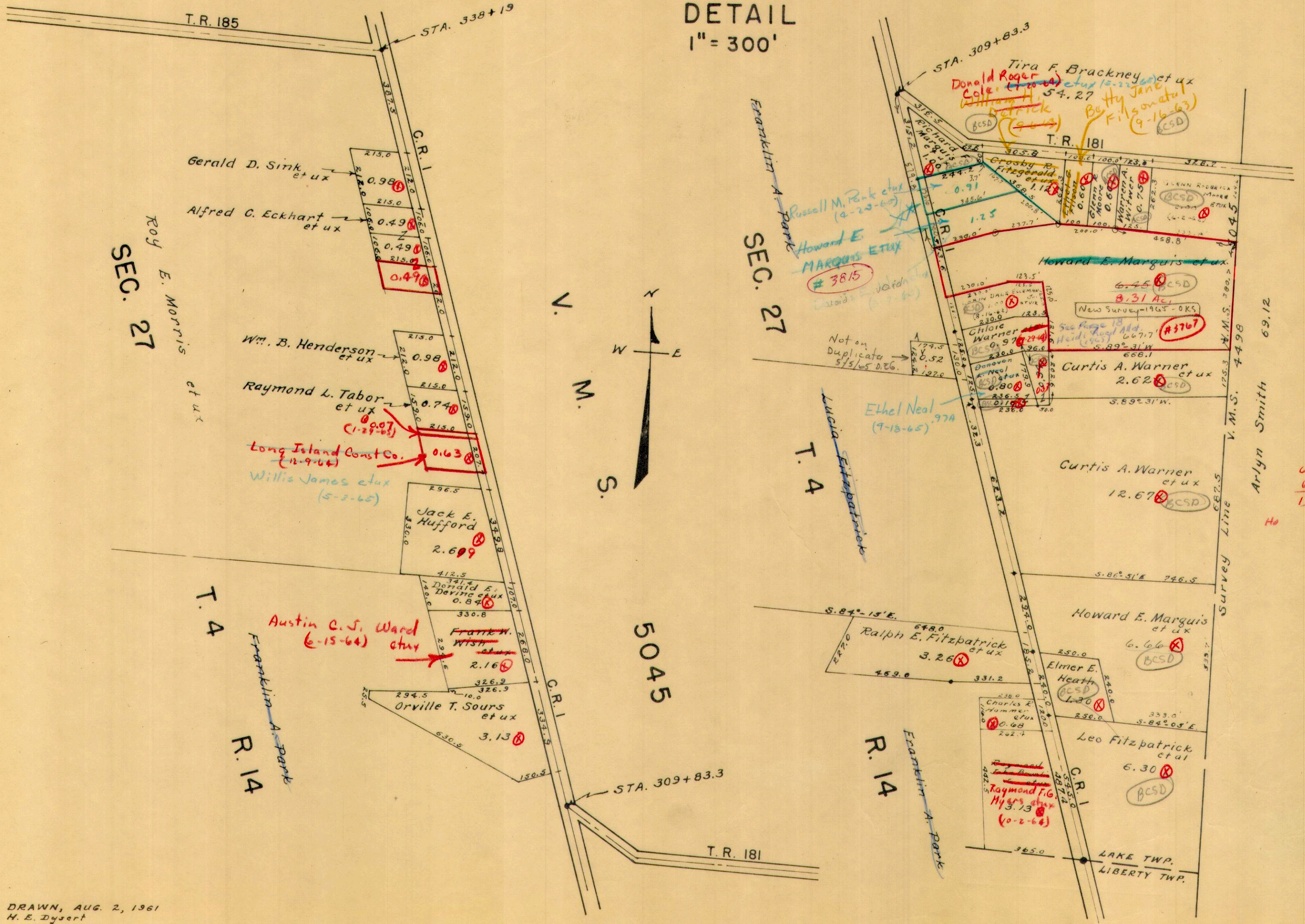
LAKE TOWNSHIP
WOODLAND SUBDIVISION
VIRGINIA MILITARY SURVEYS 3317 & 2873

SCALE: 1" = 100'



LAKE TOWNSHIP
SECTION 27 TOWN 4 RANGE 14 PART
VIRGINIA MILITARY SURVEY 5045

DETAIL
1" = 300'



SEC. 27
Roy E. Morris
et ux

SEC. 27

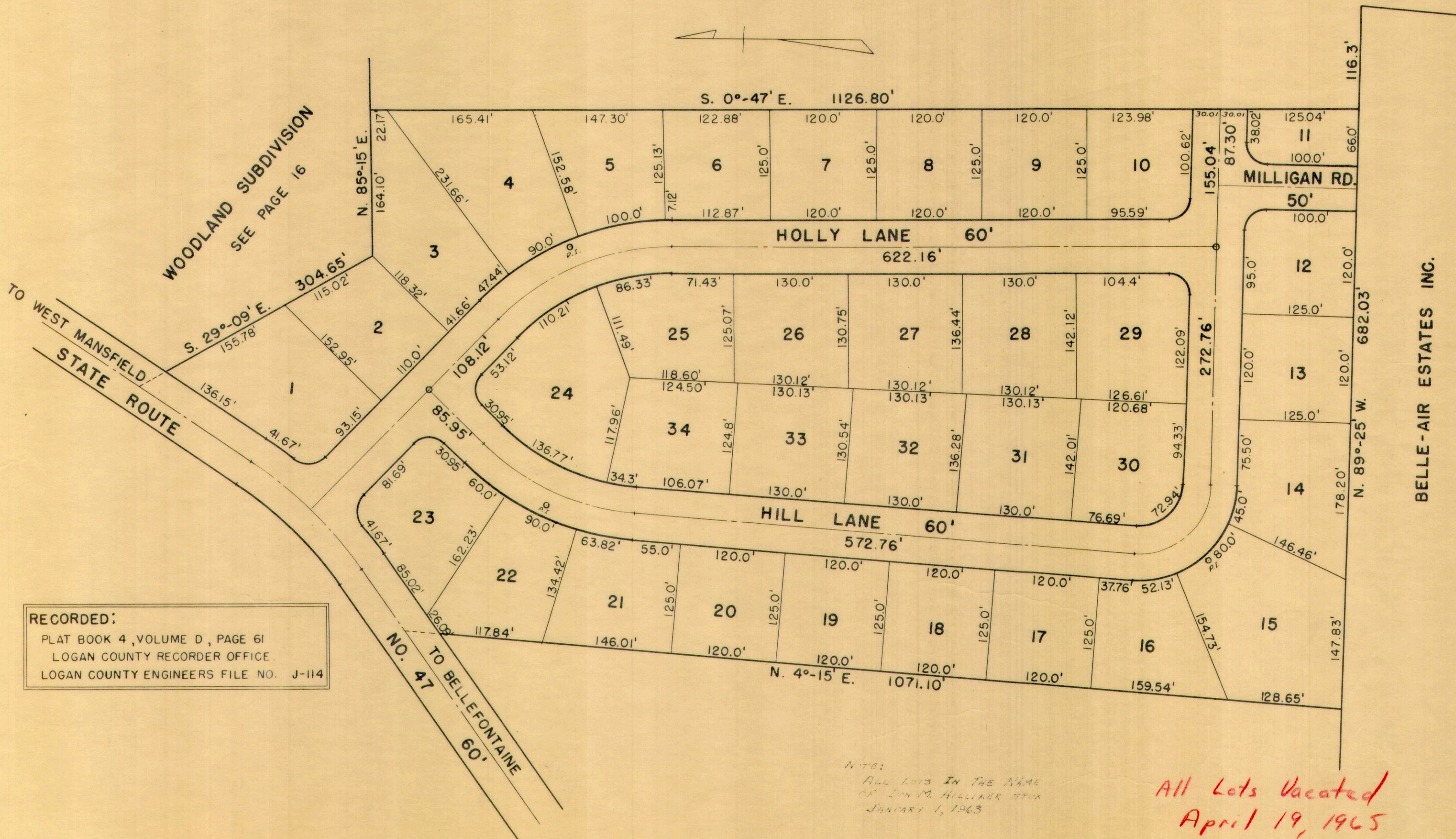
Arlyn Smith
69.12

6.45
6.66
13.11

HOLLY HILL SUBDIVISION

V.M.S. 2873

SCALE: 1"=100'



RECORDED:
 PLAT BOOK 4, VOLUME D, PAGE 61
 LOGAN COUNTY RECORDER OFFICE
 LOGAN COUNTY ENGINEERS FILE NO. J-114

NOTE:
 ALL LOTS IN THE NAME
 OF DON M. HILLIKER STOP
 JANUARY 1, 1963

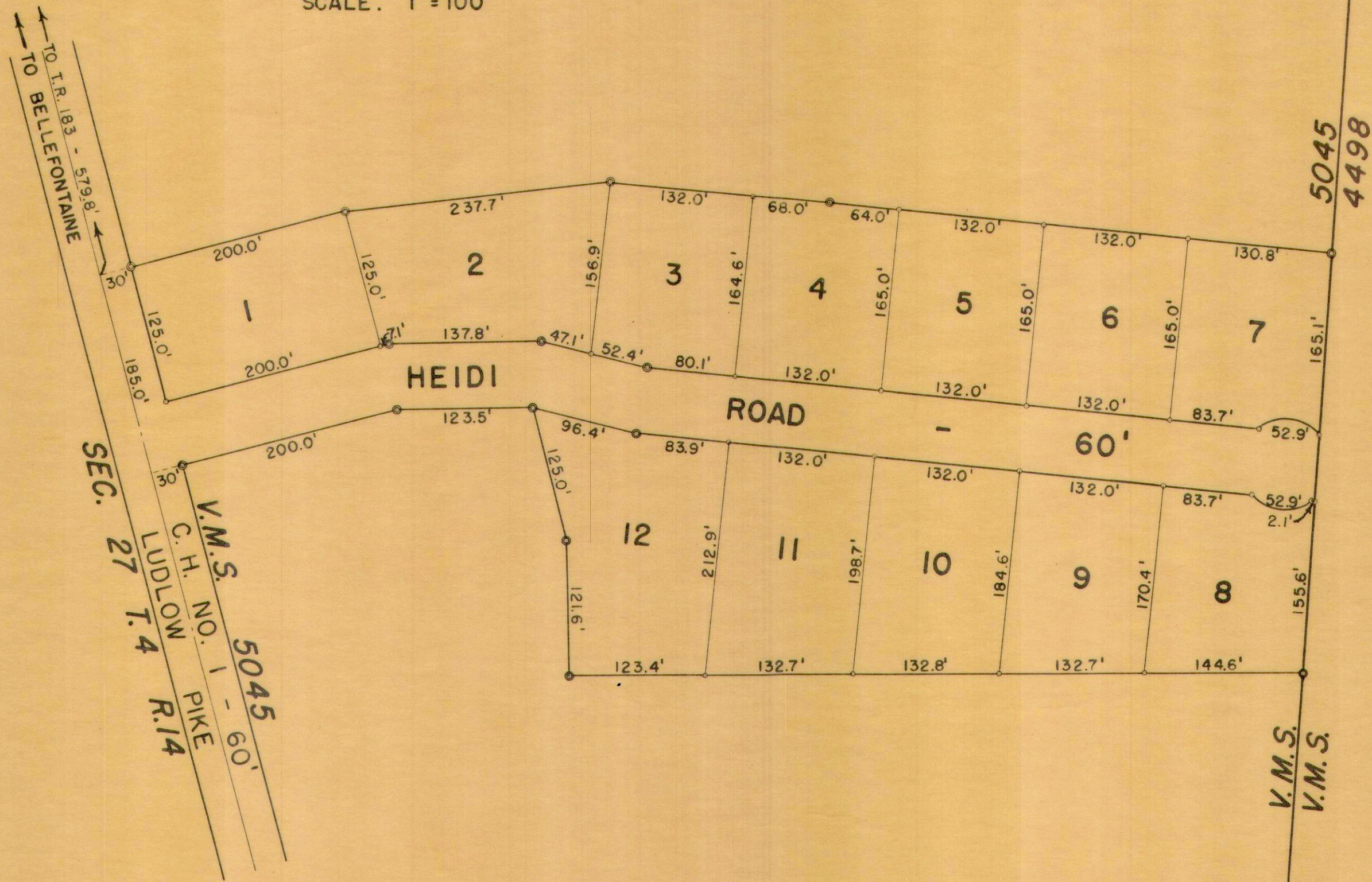
All Lots Vacated
 April 19, 1965



LAKE TOWNSHIP
HEIDI ROAD ALLOTMENT

V.M.S. 5045

SCALE: 1" = 100'



HEIDI ROAD ALLOTMENT
LOTS 1 TO 12 INCL. - 8.31 AC.
RECORDERS PLAT BOOK 4 VOL. D PAGE 114.
ENGINEERS FILE J-176, APRIL 1965.

LOT	NAME	DATE
1	Dennis E. Wren et ux	8-7-65
2	Howard E. Marguis et ux	9-22-65
3	"	
4	"	
5	"	
6	"	
7	"	
8	"	
9	"	
10	"	
11	"	
12	"	

DRAWN BY DANIEL E. GILBERT.
APRIL 30, 1965