

**LIBERTY
TOWNSHIP**

1958

LIBERTY TOWNSHIP

INDEX MAP

CORRECTED TO:
~~January 1, 1964~~
January 1, 1965
January 1, 1966

HARRISON TOWNSHIP	LAKE TOWNSHIP	TOWNSHIP
2-3-14 PAGE 1	32-4-14 PAGE 1	26-4-14 PAGE 2
1-3-14 PAGE 4	31-4-14 PAGE 4	25-4-14 PAGE 3
6-4-13 PAGE 5	36-5-13 PAGE 5	30-5-13 PAGE 6
5-4-13 PAGE 8	35-5-13 PAGE 8	29-5-13 PAGE 7
4-4-13 PAGE 9	34-5-13 PAGE 9	28-5-13 PAGE 10
33-5-13 PAGE 12	WEST LIBERTY CORPORATION PAGES 13-14-15-16	
	27-5-13 PAGE 11	

VMS. 5864
PAGE 2

JEFFERSON TOWNSHIP

TOWNSHIP

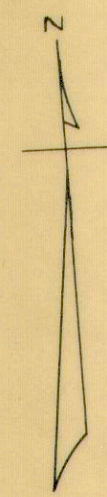
MONROE

TOWNSHIP

UNION

COUNTY

CHAMPAIGN COUNTY



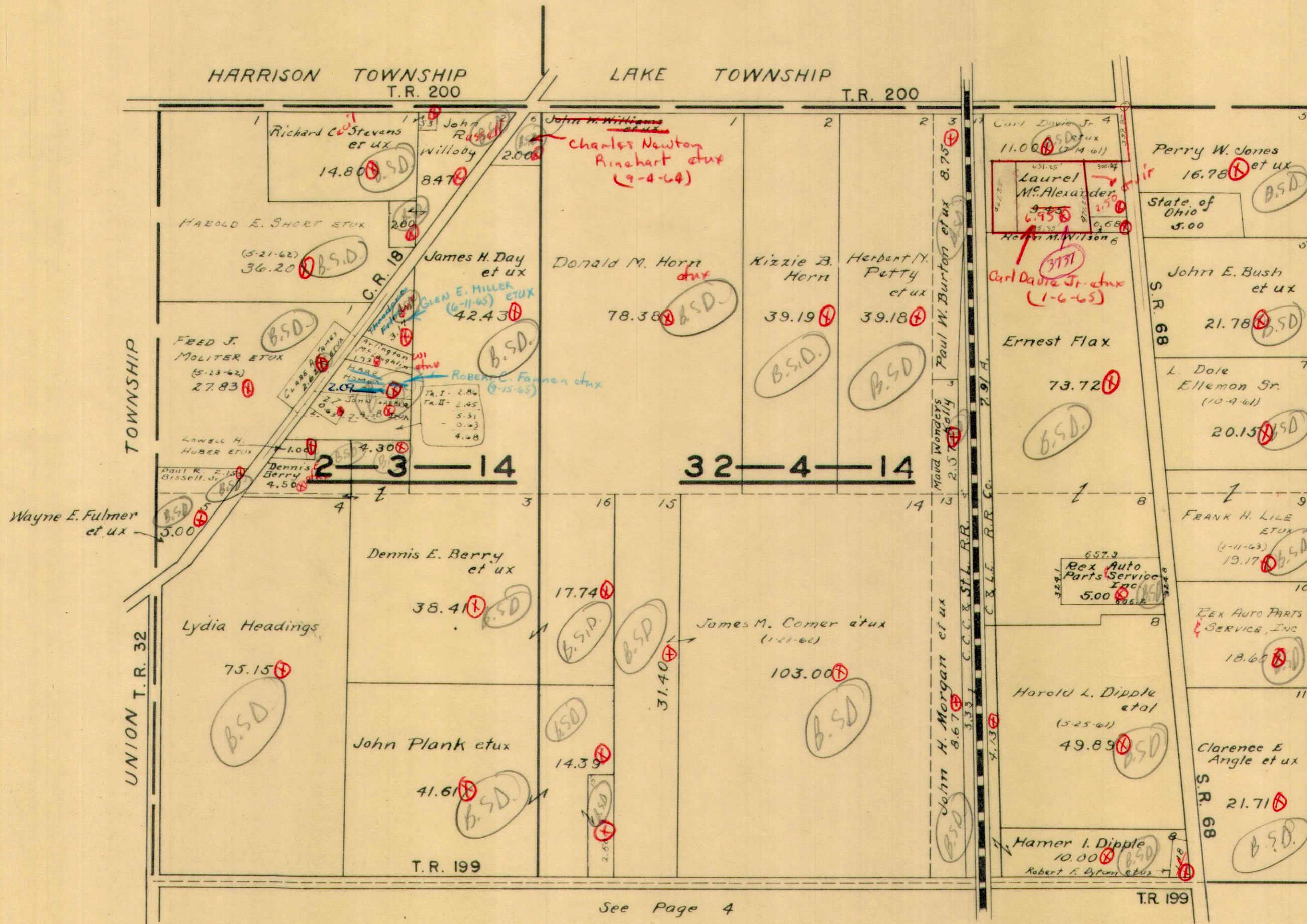
INDEX

SECTION	TOWN	RANGE	PAGE
4	4	13	9
5	4	13	8
6	4	13	5
27	5	13	11
28	5	13	10
29	5	13	7
30	5	13	6
33	5	13	12
34	5	13	9
35	5	13	8
36	5	13	5
1	3	14	4
2	3	14	1
25	4	14	3
26	4	14	2
31	4	14	4
32	4	14	1
V.M.S. 5864			2
WEST LIBERTY CORPORATION		13-14-15-16	
CRESTWOOD ALLOTMENT			17
HILLWOOD ACRES ALLOTMENT			20
SOUTH GATE ACRES ALLOTMENT			18
WOODLAND REST ALLOTMENT			19
TANGLEWOOD OAKS ALLOTMENT			21

SECTION 2 TOWN 3 RANGE 14

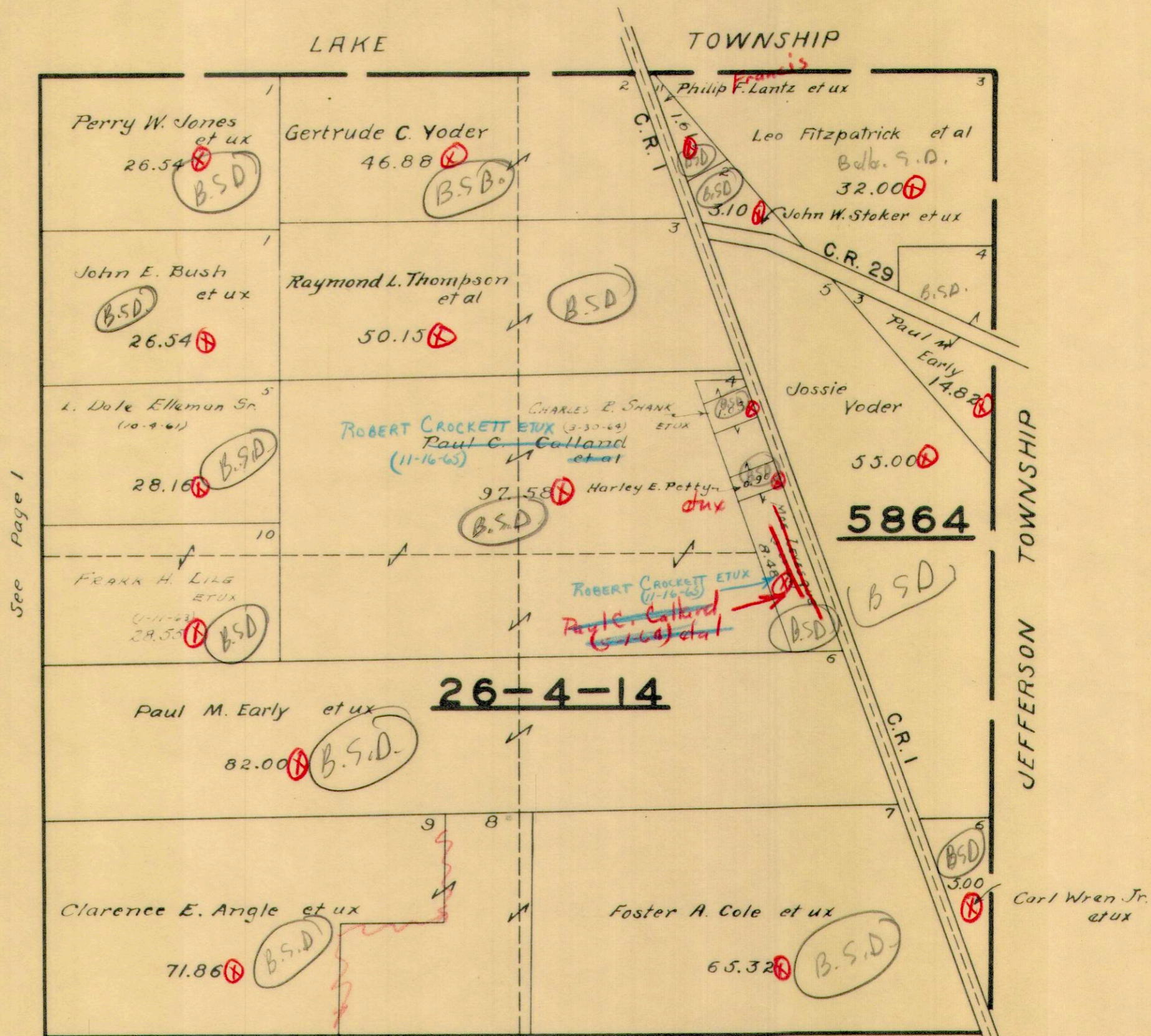
SECTION 32 TOWN 4 RANGE 14

SCALE 10 CHAINS TO THE INCH



SECTION 26 TOWN 4 RANGE 14
VIRGINIA MILITARY SURVEY 5864

SCALE 10 CHAINS TO THE INCH



See Page 1

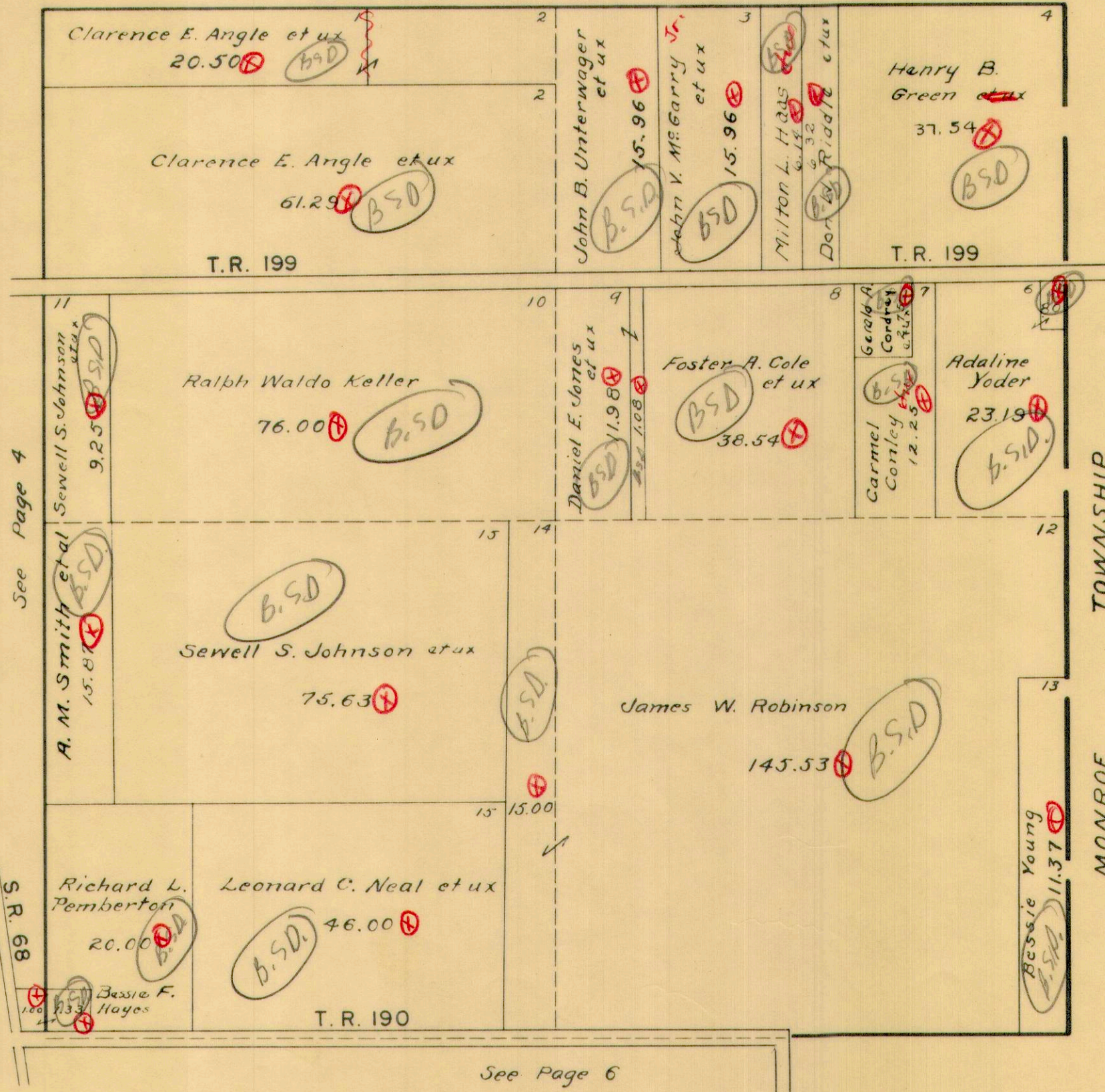
See Page 3



SECTION 25 TOWN 4 RANGE 14

SCALE 10 CHAINS TO THE INCH

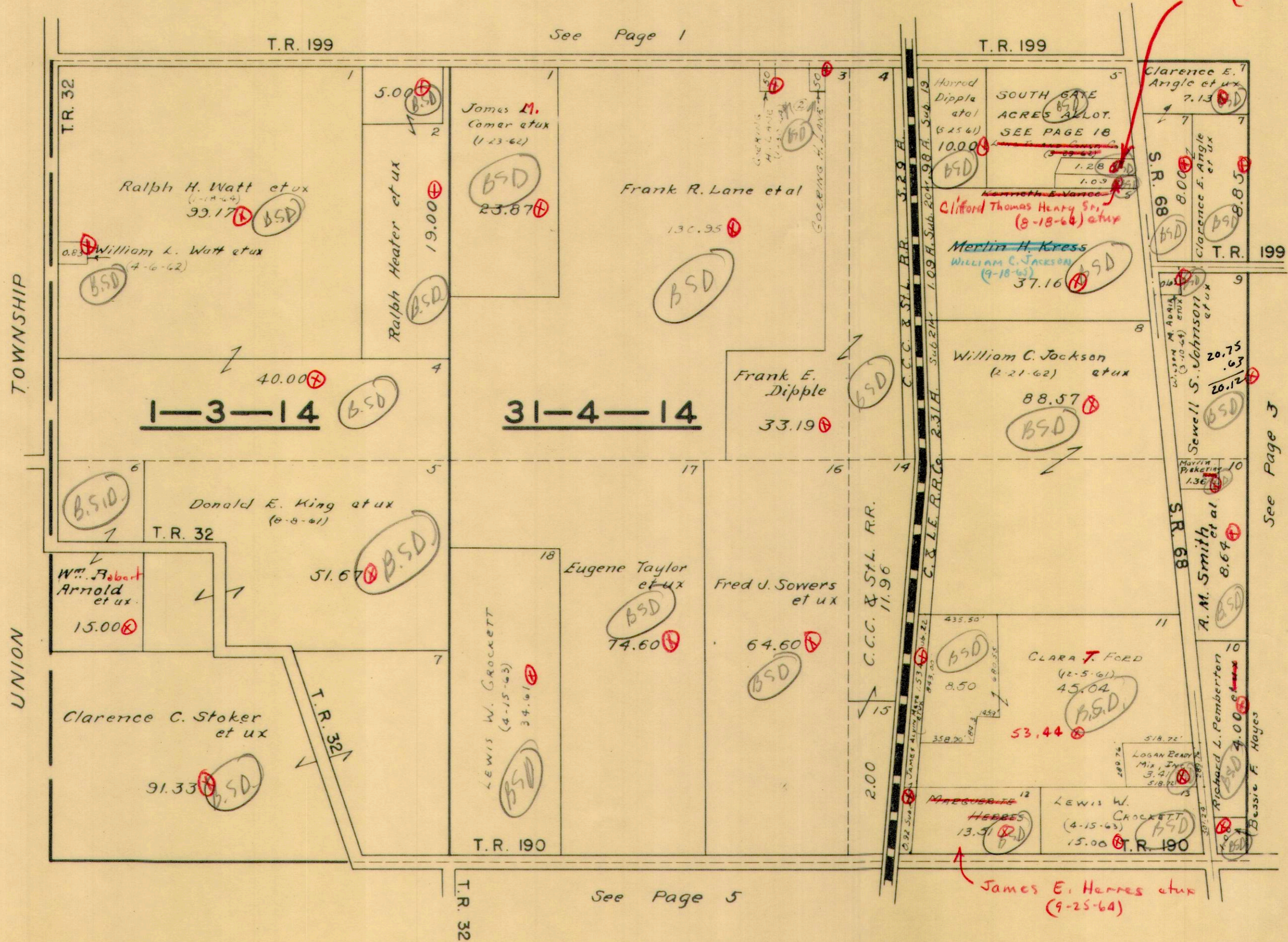
See Page 2



SECTION 1 TOWN 3 RANGE 14

SECTION 31 TOWN 4 RANGE 14

SCALE 10 CHAINS TO THE INCH



Roger Paul Hatcher et ux (7-29-64)

James E. Herres et ux (9-25-64)

See Page 3

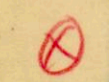
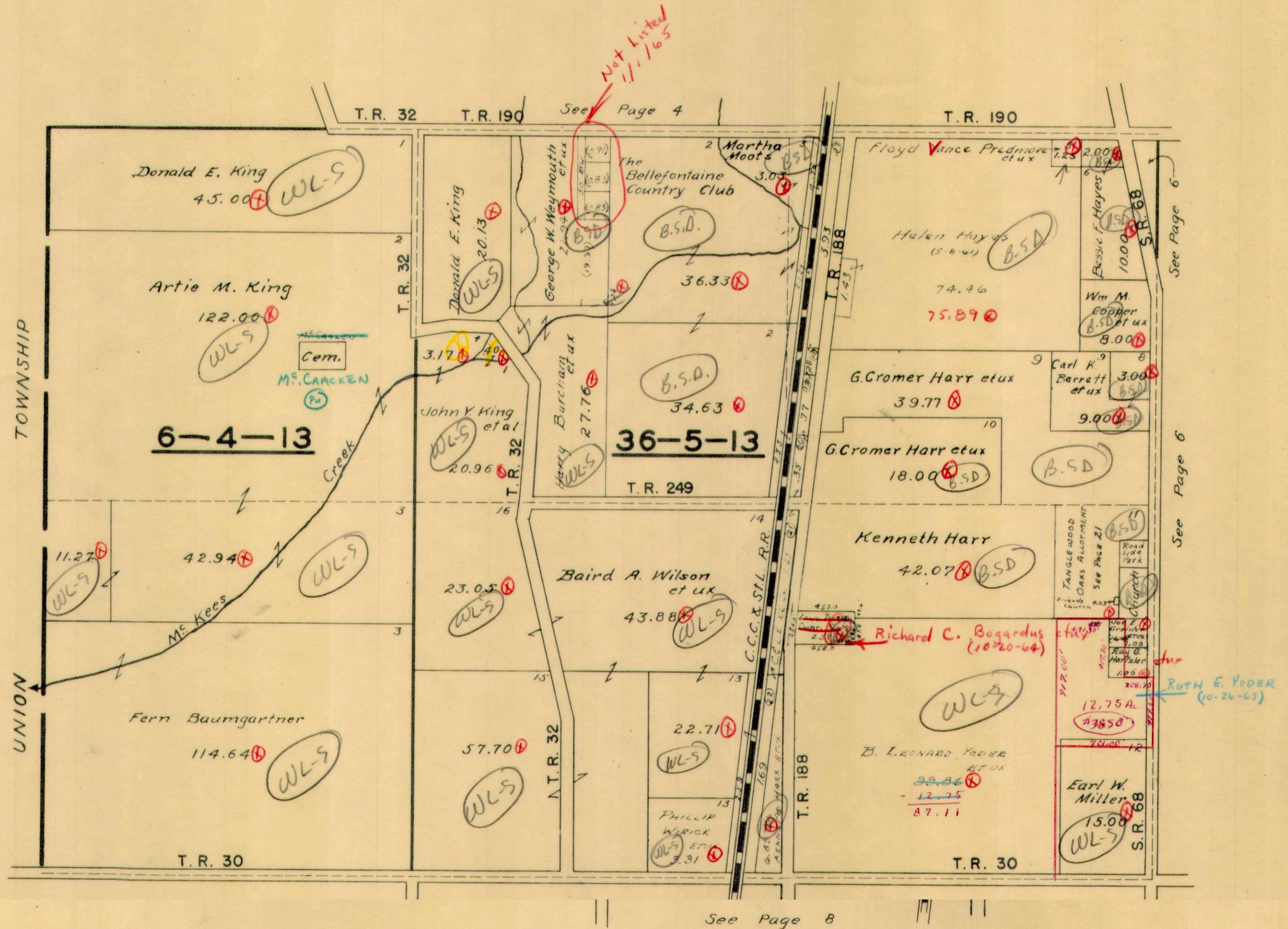
See Page 1

See Page 5

SECTION 6 TOWN 4 RANGE 13

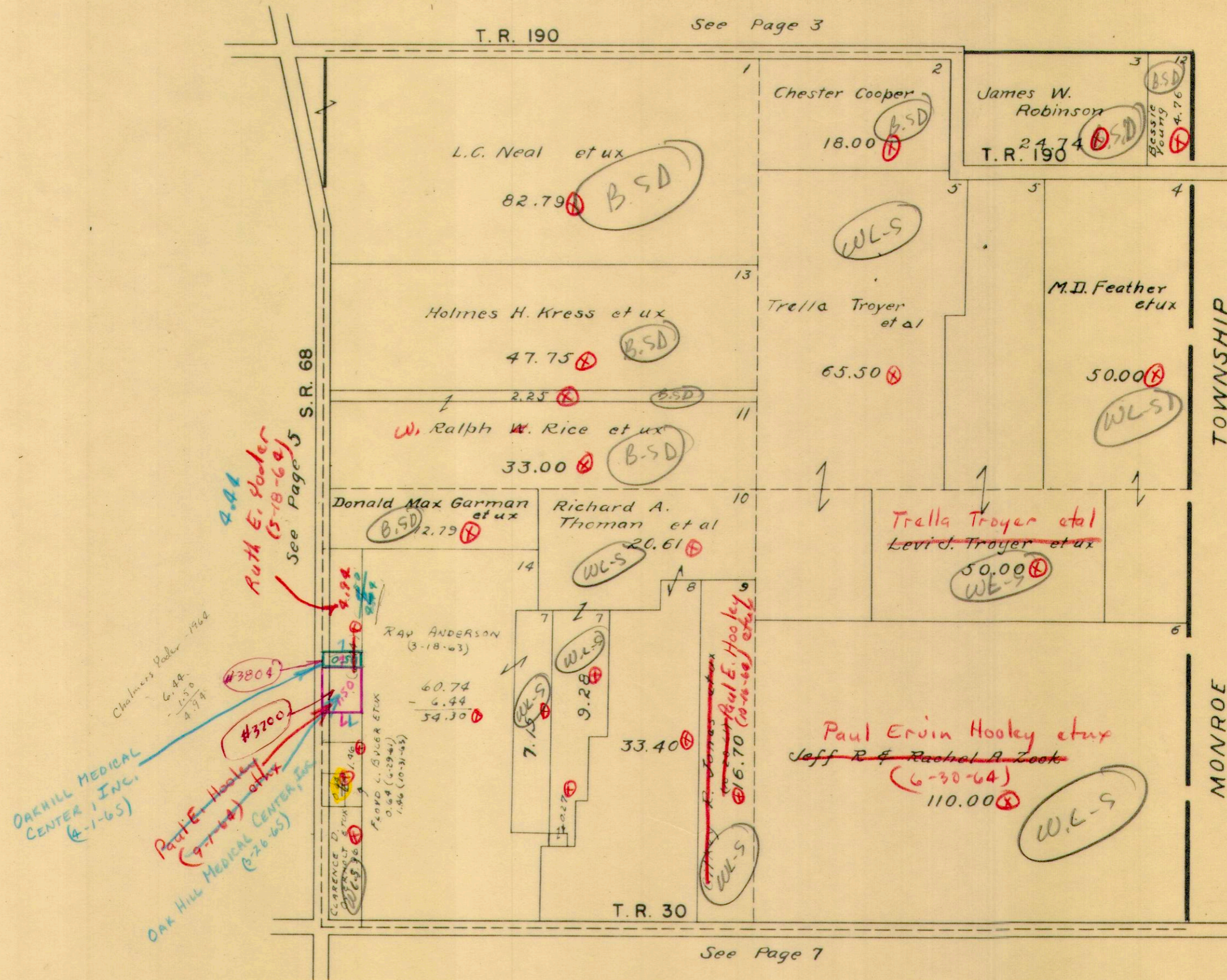
SECTION 36 TOWN 5 RANGE 13

SCALE 10 CHAINS TO THE INCH



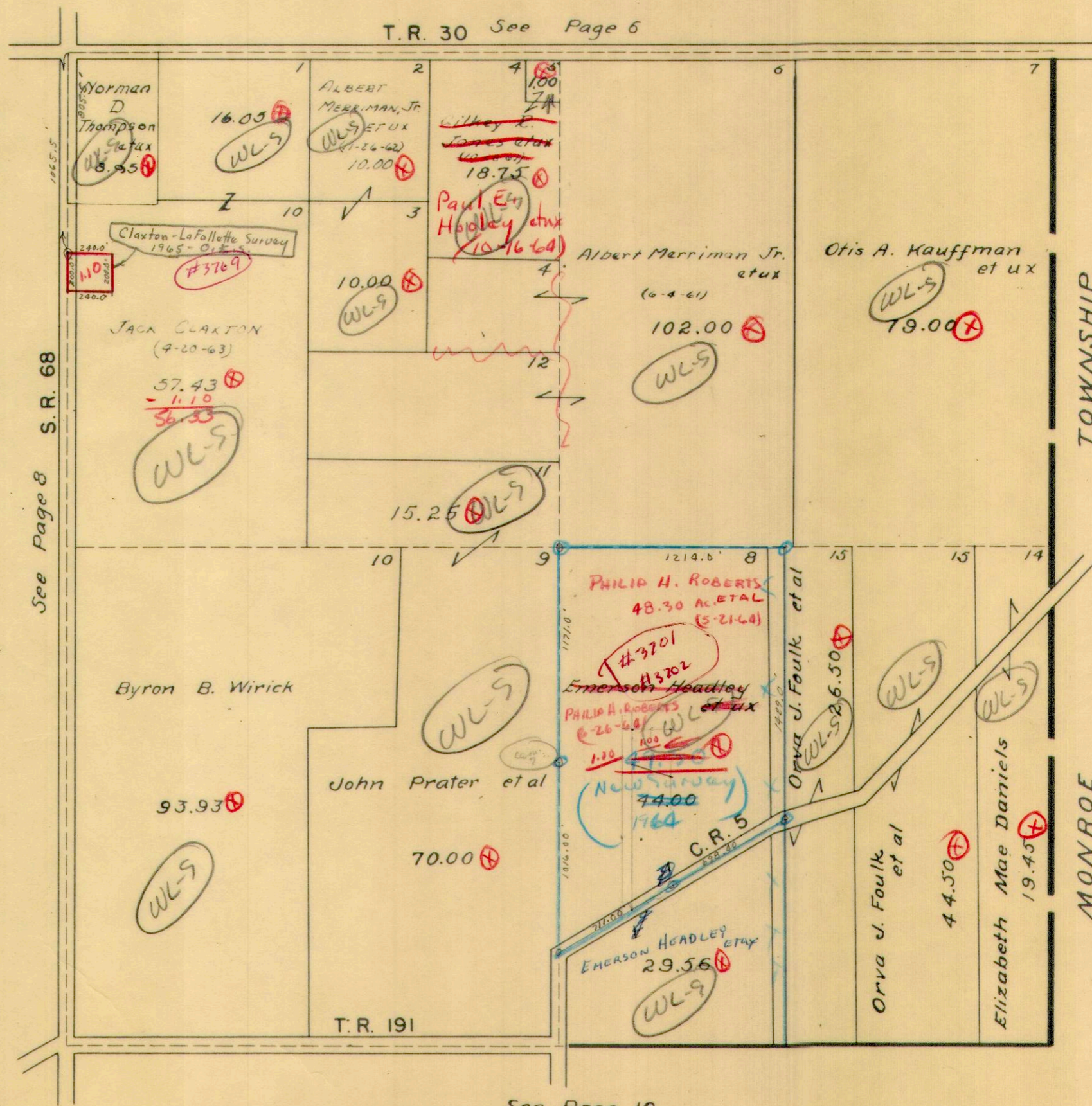
SECTION 30 TOWN 5 RANGE 13

SCALE 10 CHAINS TO THE INCH



SECTION 29 TOWN 5 RANGE 13

SCALE 10 CHAINS TO THE INCH



POSSIBLE CEMETERY (SEC. 29 T5 R13)
JOHN PRATER - 0.75 (1870)

See Page 10

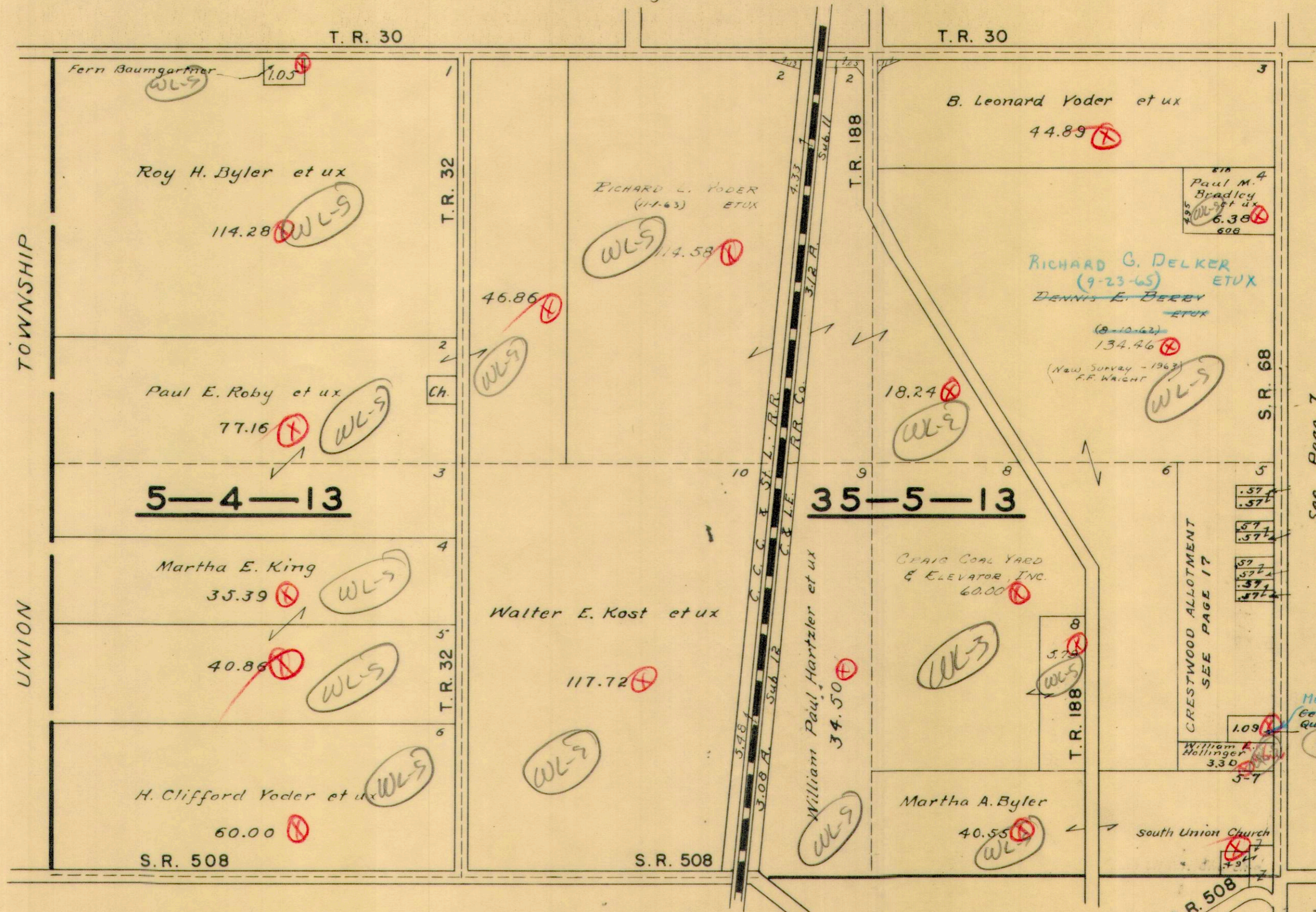


SECTION 5 TOWN 4 RANGE 13

SECTION 35 TOWN 5 RANGE 13

SCALE 10 CHAINS TO THE INCH

See Page 5



See Page 7

Quinn H.P. Adams
0.57
?

MERLIN H. KRESS
Gerald (9-30-65) ETUX
Quainance et ux
WLS

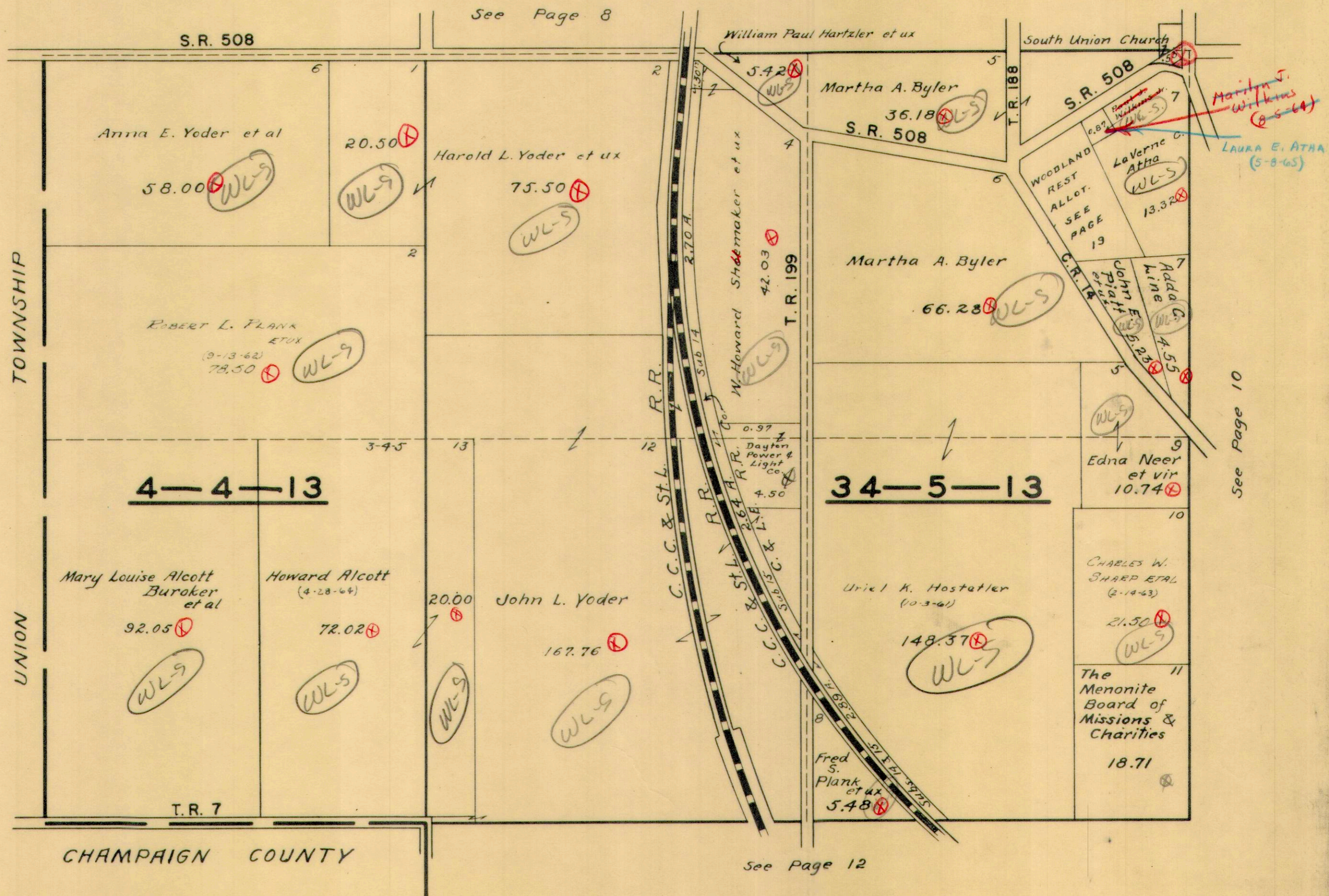
See Page 9



SECTION 4 TOWN 4 RANGE 13

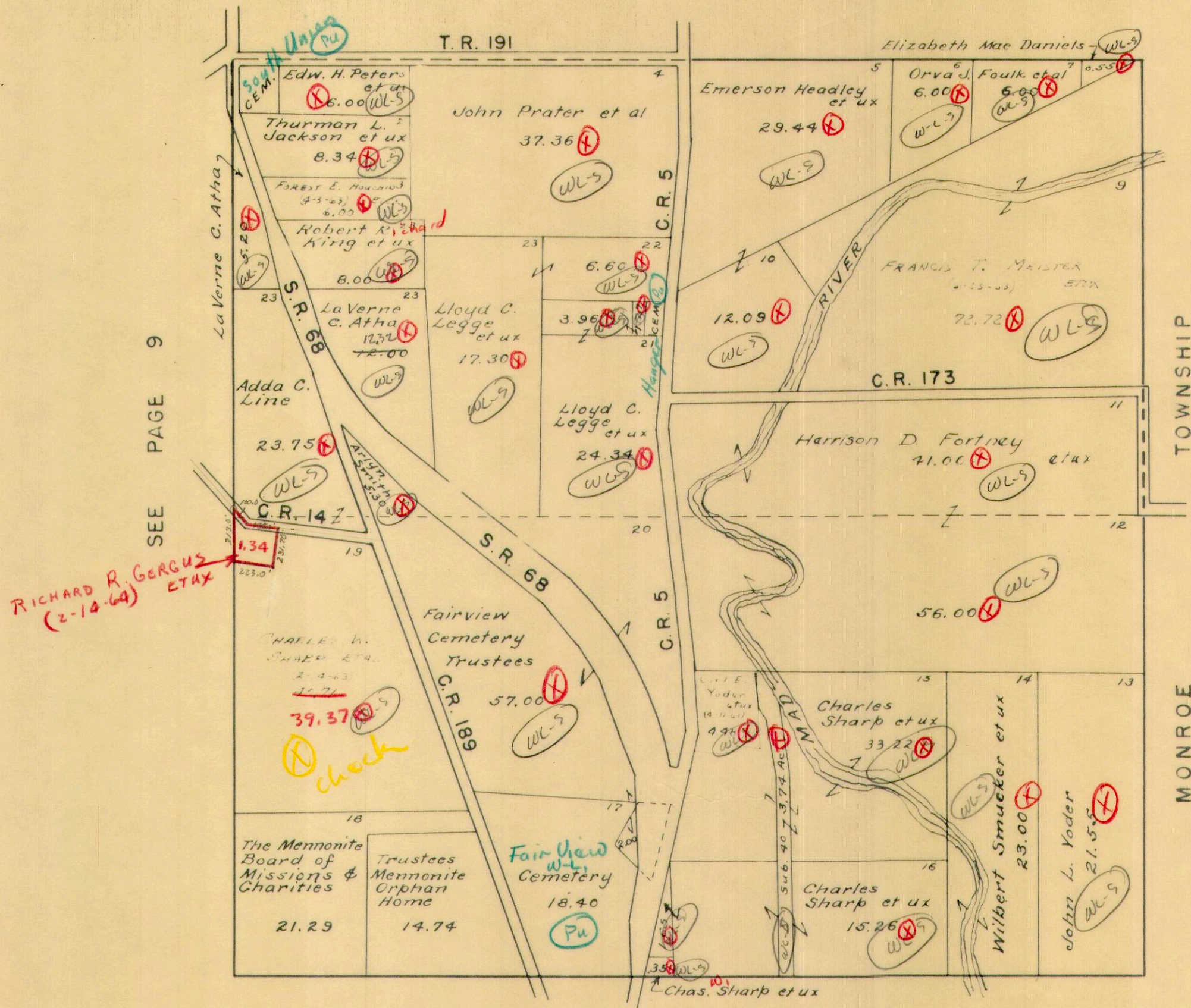
SECTION 34 TOWN 5 RANGE 13

SCALE 10 CHAINS TO THE INCH



LIBERTY TOWNSHIP
SECTION 28 TOWN 5 RANGE 13
SCALE 10 CHAINS TO THE INCH

SEE PAGE 7

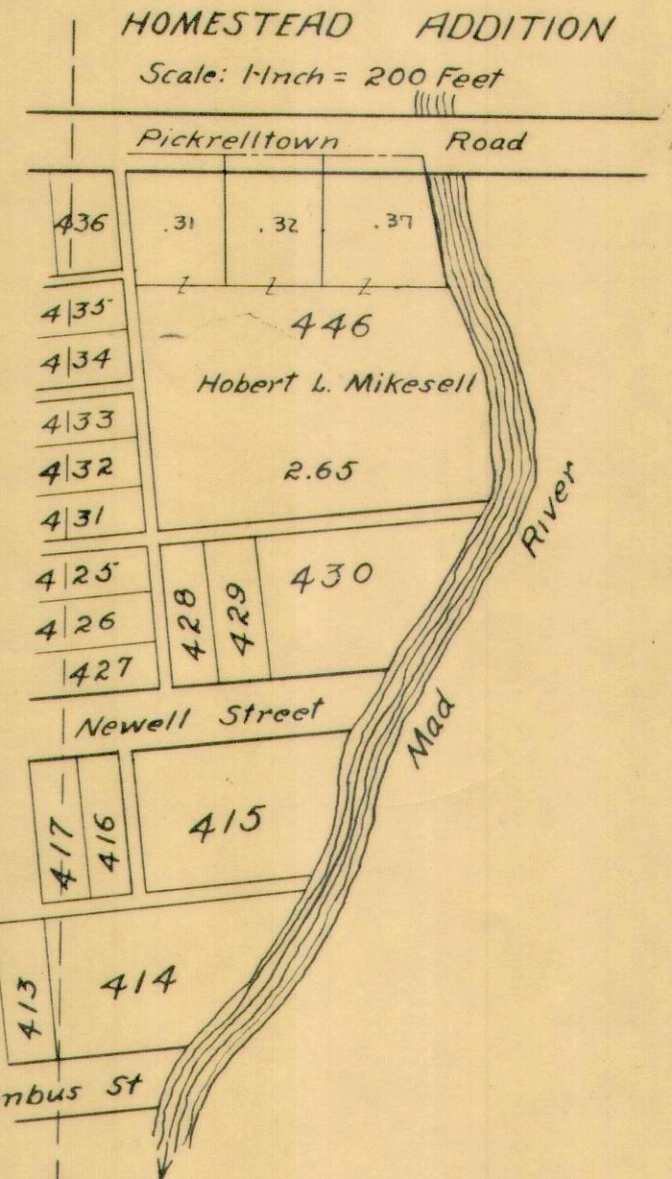
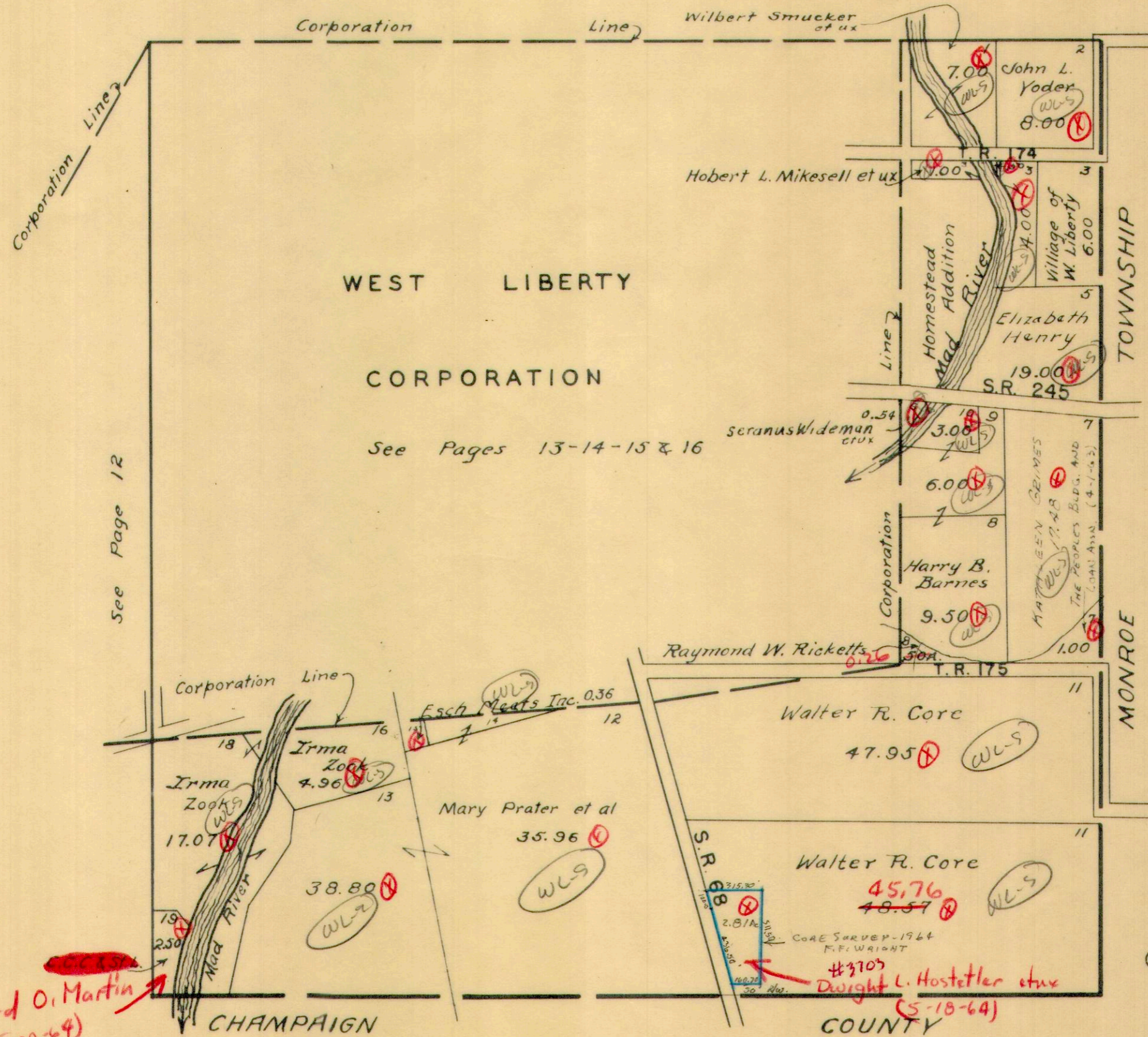


SEE PAGE 11

SECTION 27 TOWN 5 RANGE 13

SCALE 10 CHAINS TO THE INCH

See Page 10



Richard O. Martin (2-20-64)

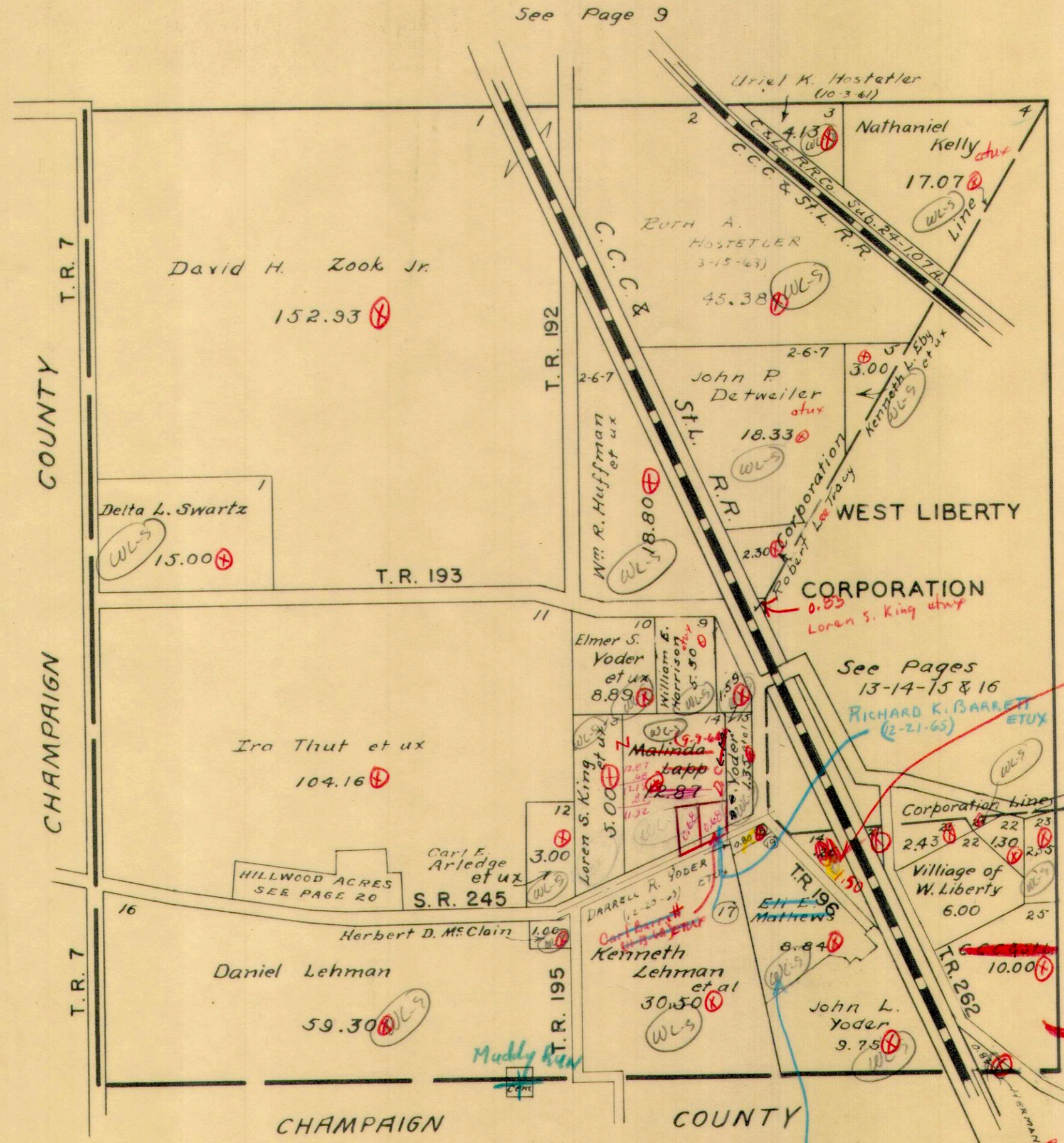
Otto L. Lockwood 27-5-13 0.80 acre? 1964 Dupl.



SECTION 33 TOWN 5 RANGE 13

SCALE 10 CHAINS TO THE INCH

Donald C. Yoder et al
15 - 1.35 Ac.
- 1.59 Ac.



SEE PAGE 11

Esch's Meats, Inc.

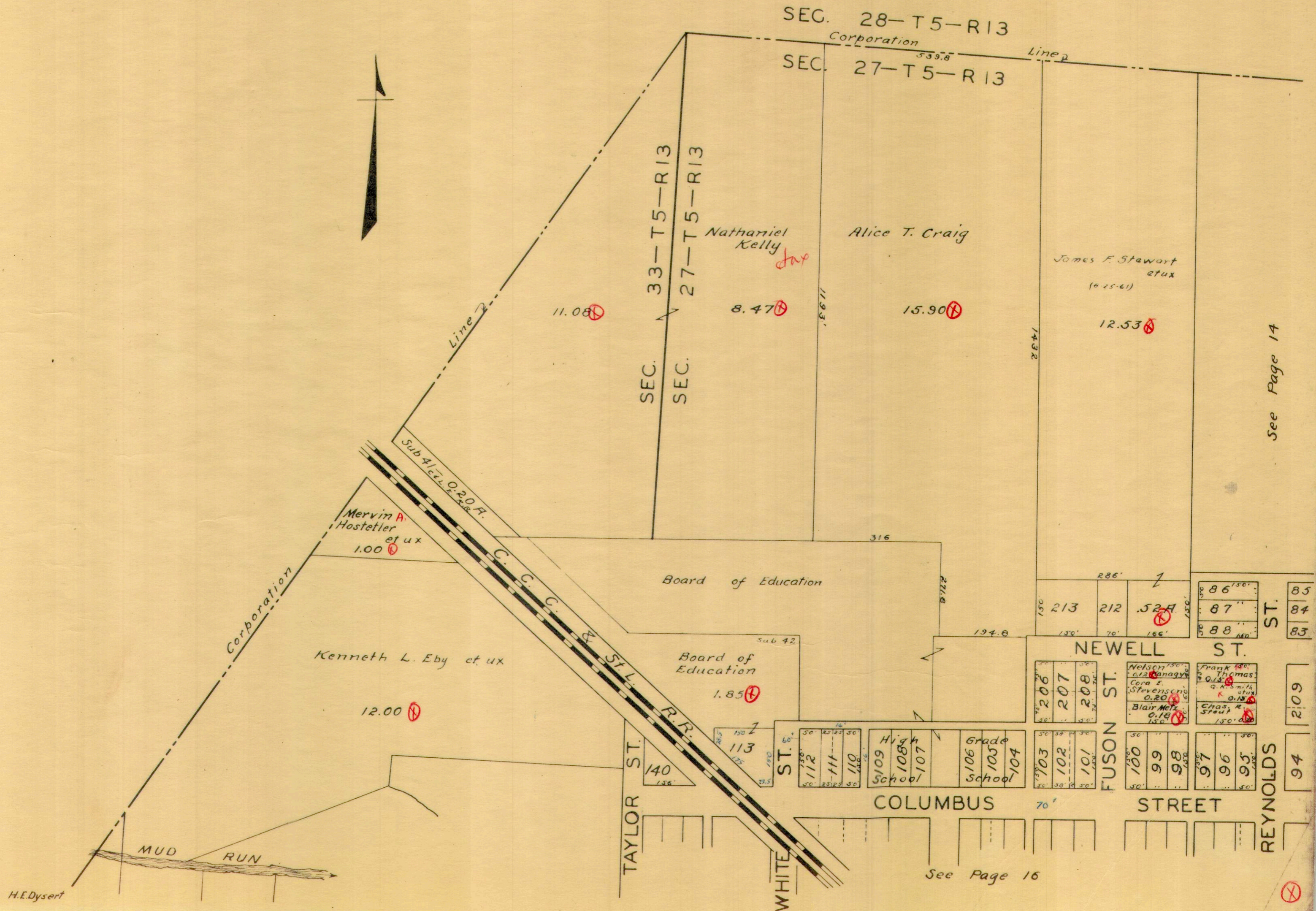
Sub Esch's Meats Inc. Name	Acres
14 Loren S. King et ux	0.26
21 F. RENE SMITH (4-18-62)	0.75
21 Joseph L. Mast Jr. Trustee	2.43
22 Joseph L. Mast Jr. Trustee	1.30
23 AVALON M. WOODARD (10-22-63)	2.35
24 ESCH'S MEATS, INC. (7-27-62)	0.20

Richard O. Martin (7-20-69)

PAUL R. THORBURG (3-16-65) ETUX

WEST LIBERTY CORPORATION

SCALE 200 FEET TO THE INCH

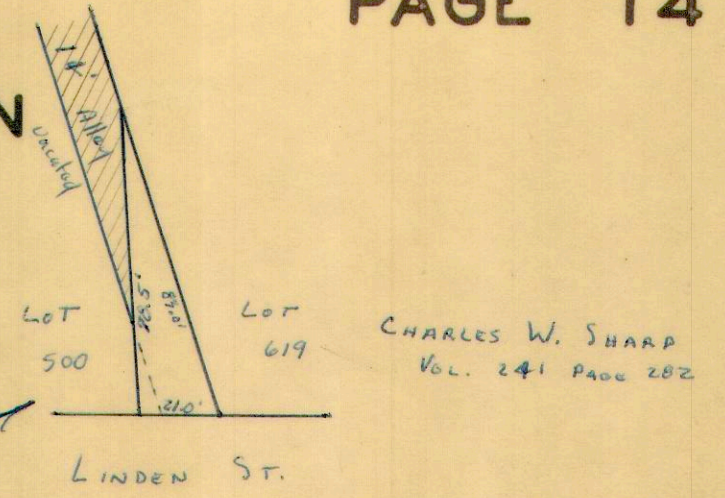


See Page 14

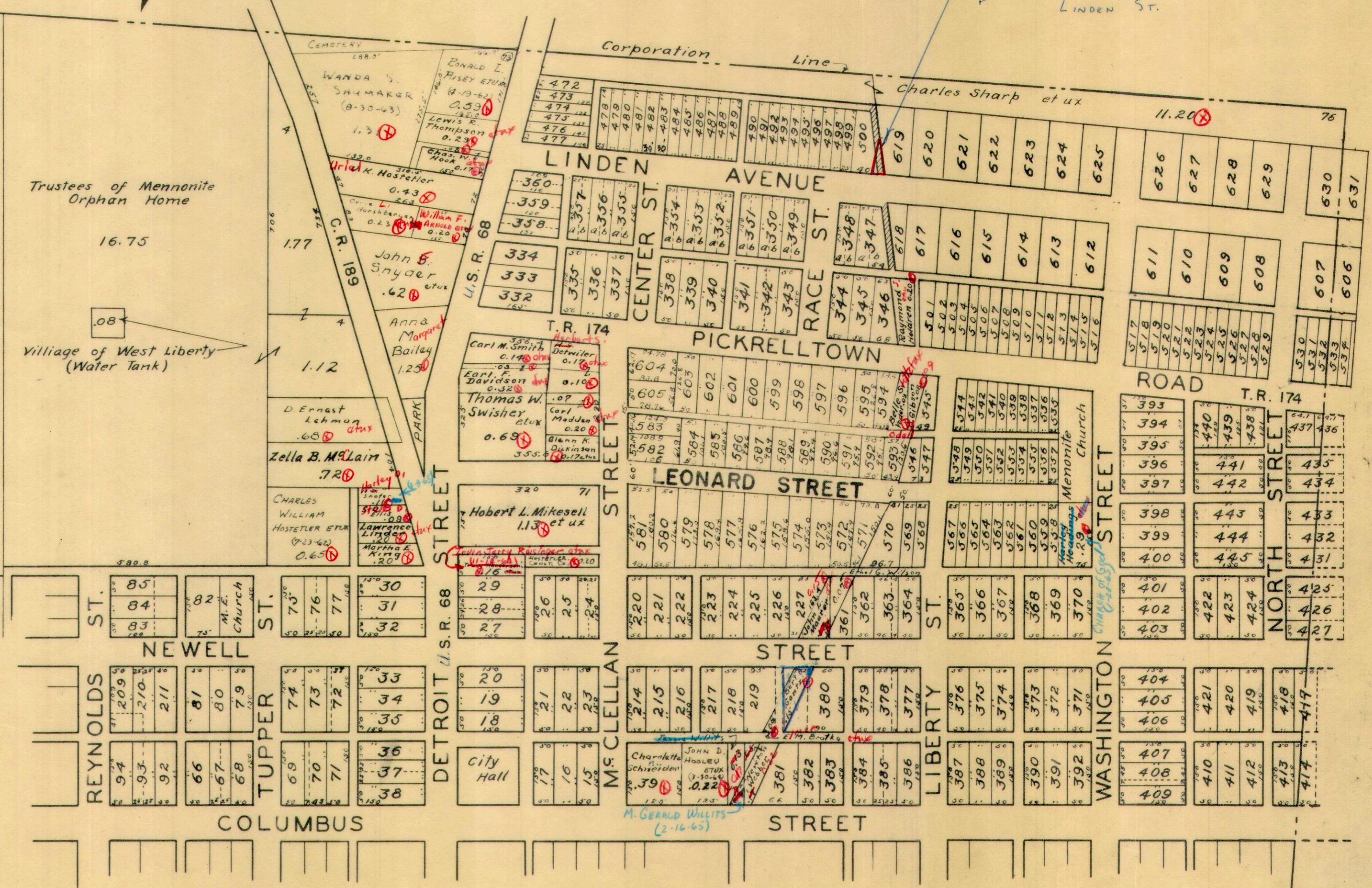
See Page 16

WEST LIBERTY CORPORATION

SCALE 200 FEET TO THE INCH



See Page 13

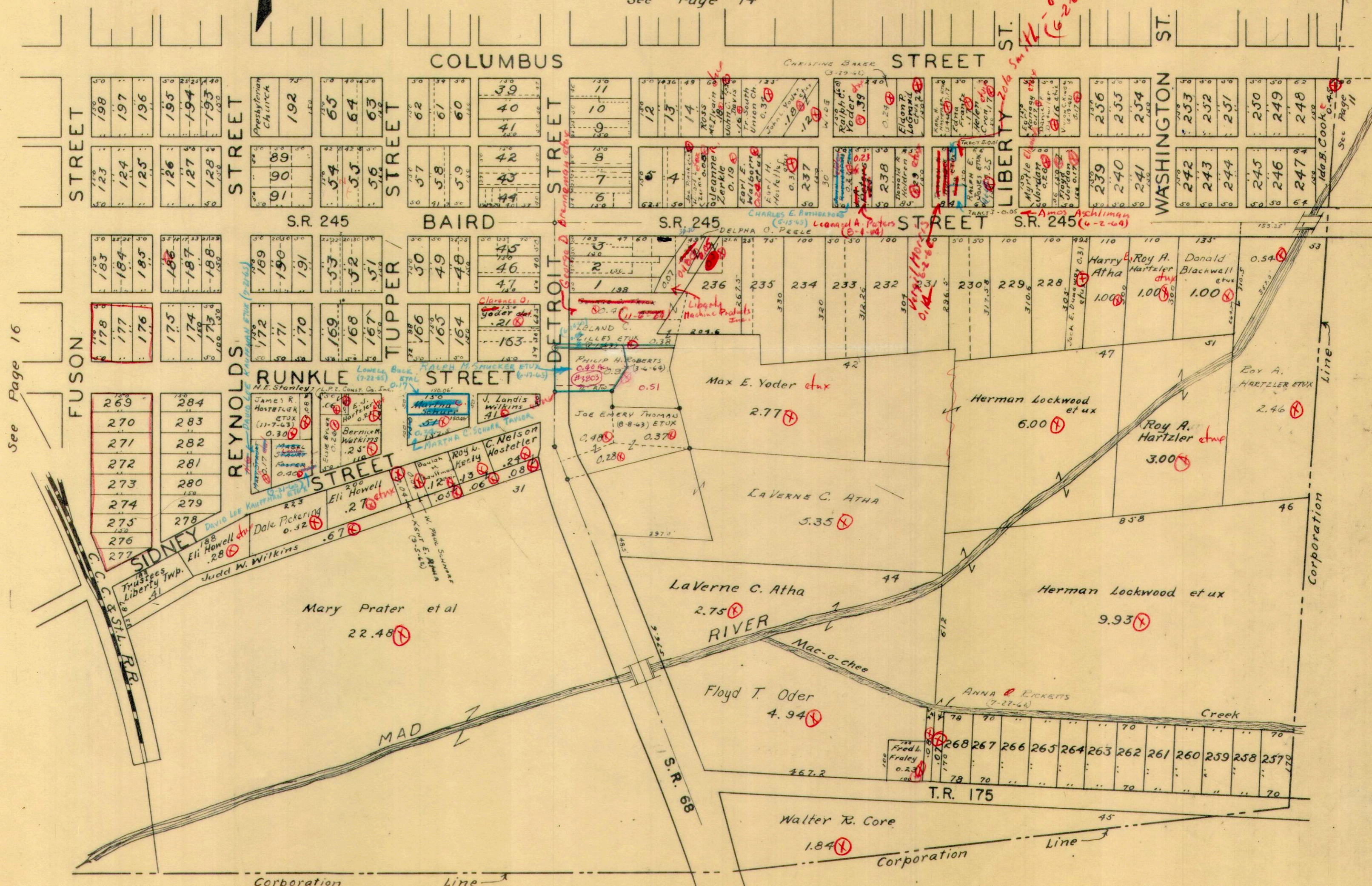


See Page 15

WEST LIBERTY CORPORATION

SCALE 200 FEET TO THE INCH

See Page 14



See Page 16

H.E. Dysert

0.48
0.37
0.28
1.13

0.09
(6-2-64)

Amos Aschliman
(4-2-64)

Wm. H. Marks
(1-1-64)

CHRISTINE BAKER
(3-29-62)

CHARLES E. ROTHBART
(5-15-65)

Leonard A. Peters
(8-1-64)

Clarence O. Yoder et al.
(1-1-64)

J. Landis Wilkins
(1-1-64)

James R. Hostetler et ux
(11-7-63)

Eli Howell et ux
(1-1-64)

Judd W. Wilkins
(1-1-64)

ANNA E. ECKERTS
(7-27-64)

Fred L. Fraley
(1-1-64)

Corporation Line

Corporation Line

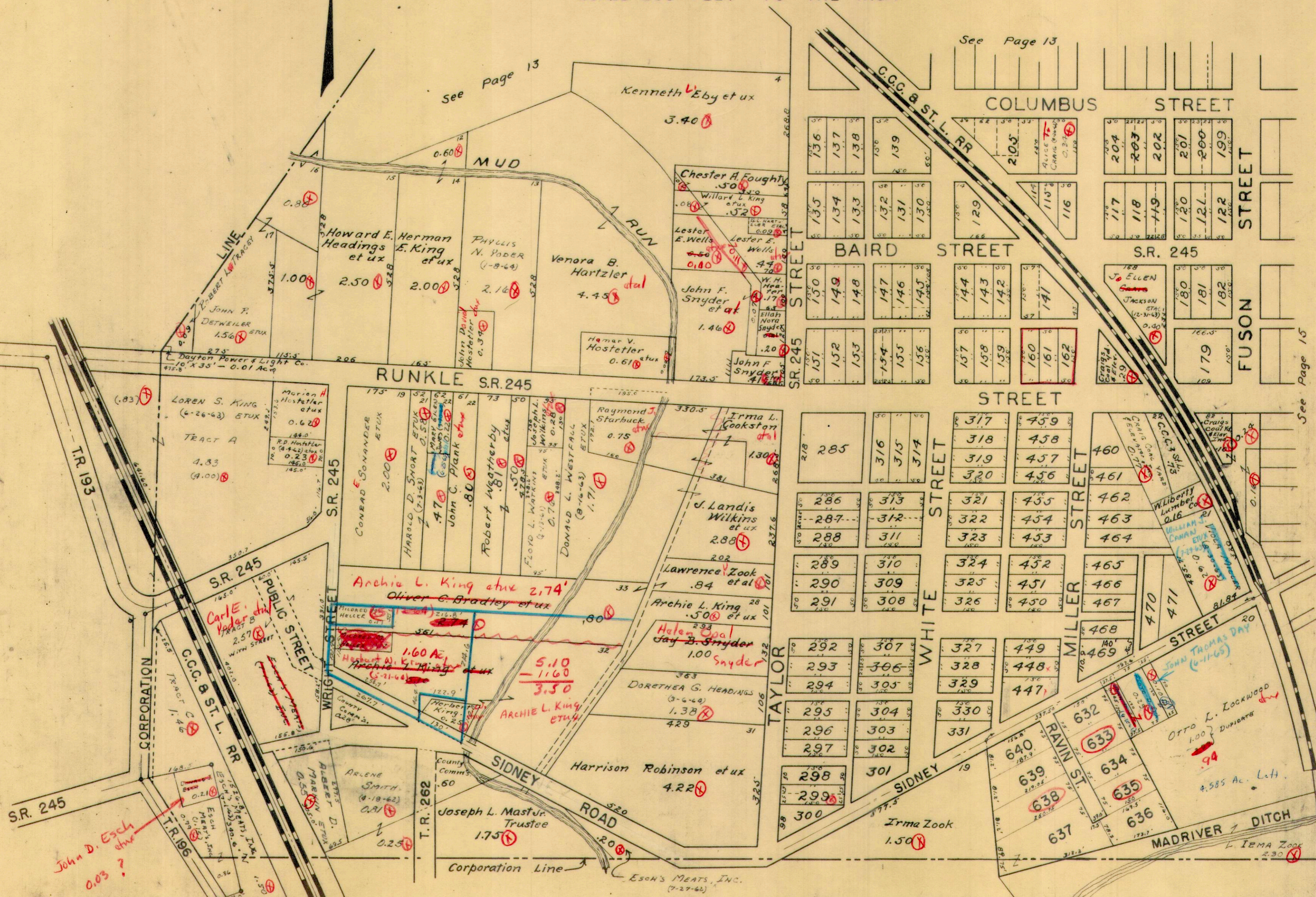
Line

Corporation Line

Line

LIBERTY TOWNSHIP
WEST LIBERTY CORPORATION

SCALE 200 FEET TO THE INCH



see Page 13

See Page 13

See Page 15

Kenneth Eby et ux
3.40

Howard E. Herman
E. King et ux
2.50

Venora B. Hartzler
4.45

JOHN P. DETWEILER
1.56

Dayton Power & Light Co.
10' X 35' - 0.01 AC

RUNKLE S.R. 245

LOREN S. KING
(6-26-63) ETUX
1.83
(9.00)

MURION H. HOSTETLER
ETUX
0.62

CONRAD SONANDER
ETUX
2.00

HAROLD D. SHORT
ETUX
0.50

JOHN C. PLANK
ETUX
0.80

ROBERT WEATHERBY
ETUX
0.81

FLOYD L. WATKINS
ETUX
0.70

DONALD L. WESTFALL
ETUX
1.71

RAYMOND J. STARBUCK
ETUX
0.75

IRMA L. COOKSTON
ETUX
1.30

J. LANDIS WILKINS
ETUX
2.88

LAWRENCE V. ZOOK
ETUX
0.84

ARCHIE L. KING
ETUX
0.50

Helen Coal
JAY B. SNYDER
1.00

DOROTHEA G. HEADINGS
ETUX
1.38

HARRISON ROBINSON
ETUX
4.22

TR. 193

S.R. 245

PUBLIC STREET

WRIGLEY STREET

WILSON STREET

WRIGHT STREET

WILSON STREET

WILSON STREET

WILSON STREET

TAYLOR STREET

WHITE STREET

MILLER STREET

WILSON STREET

WILSON STREET

WILSON STREET

WILSON STREET

WILSON STREET

C.C.C. & ST. L. RR

WILSON STREET

WILSON STREET

WILSON STREET

WILSON STREET

WILSON STREET

WILSON STREET

WILSON STREET

WILSON STREET

WILSON STREET

WILSON STREET

WILSON STREET

WILSON STREET

WILSON STREET

WILSON STREET

WILSON STREET

S.R. 245

WILSON STREET

WILSON STREET

WILSON STREET

WILSON STREET

WILSON STREET

WILSON STREET

WILSON STREET

WILSON STREET

WILSON STREET

WILSON STREET

WILSON STREET

WILSON STREET

WILSON STREET

WILSON STREET

WILSON STREET

John D. Esch
0.03 ?

Corporation Line

Esch's MEATS, INC.
(7-27-62)

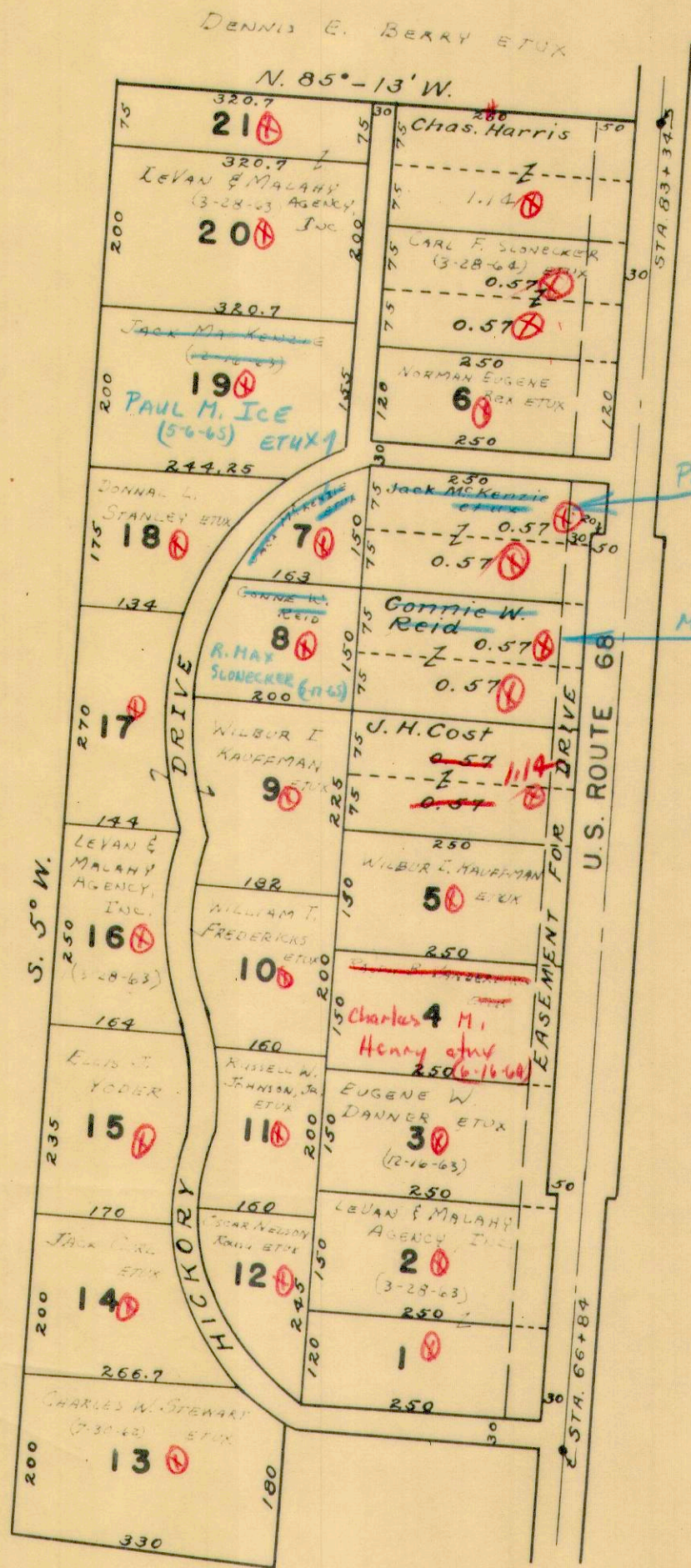
OTTO L. LOCKWOOD
1.00 Duplicates
94

4.585 Ac. L.H.

L. IRMA ZOOK
2.30

CRESTWOOD ALLOTMENT
LIBERTY TOWNSHIP

SEC. 35 - T. 5 - R. 13



PAUL M. ICE ETUX
(5-6-65)

MAX SLONECKER ETUX
(7-17-65)



SCALE: 1" = 200'

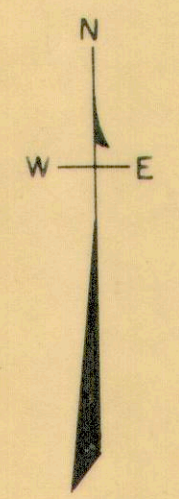
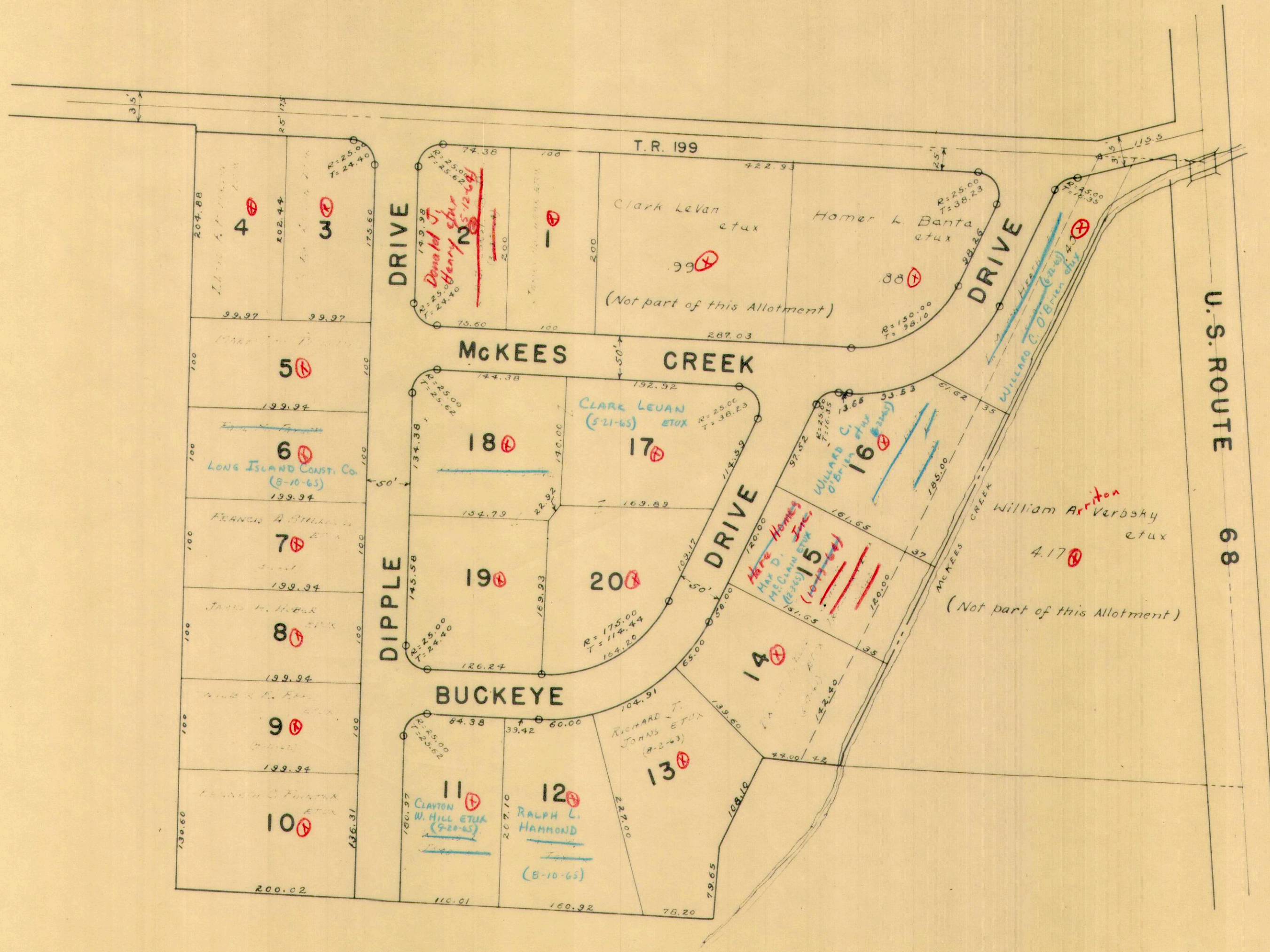
Note;
See Plat Book 4D, Page 8
Logan Co. Records Office

Ⓢ

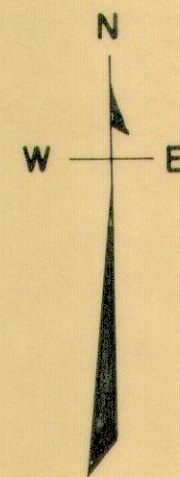
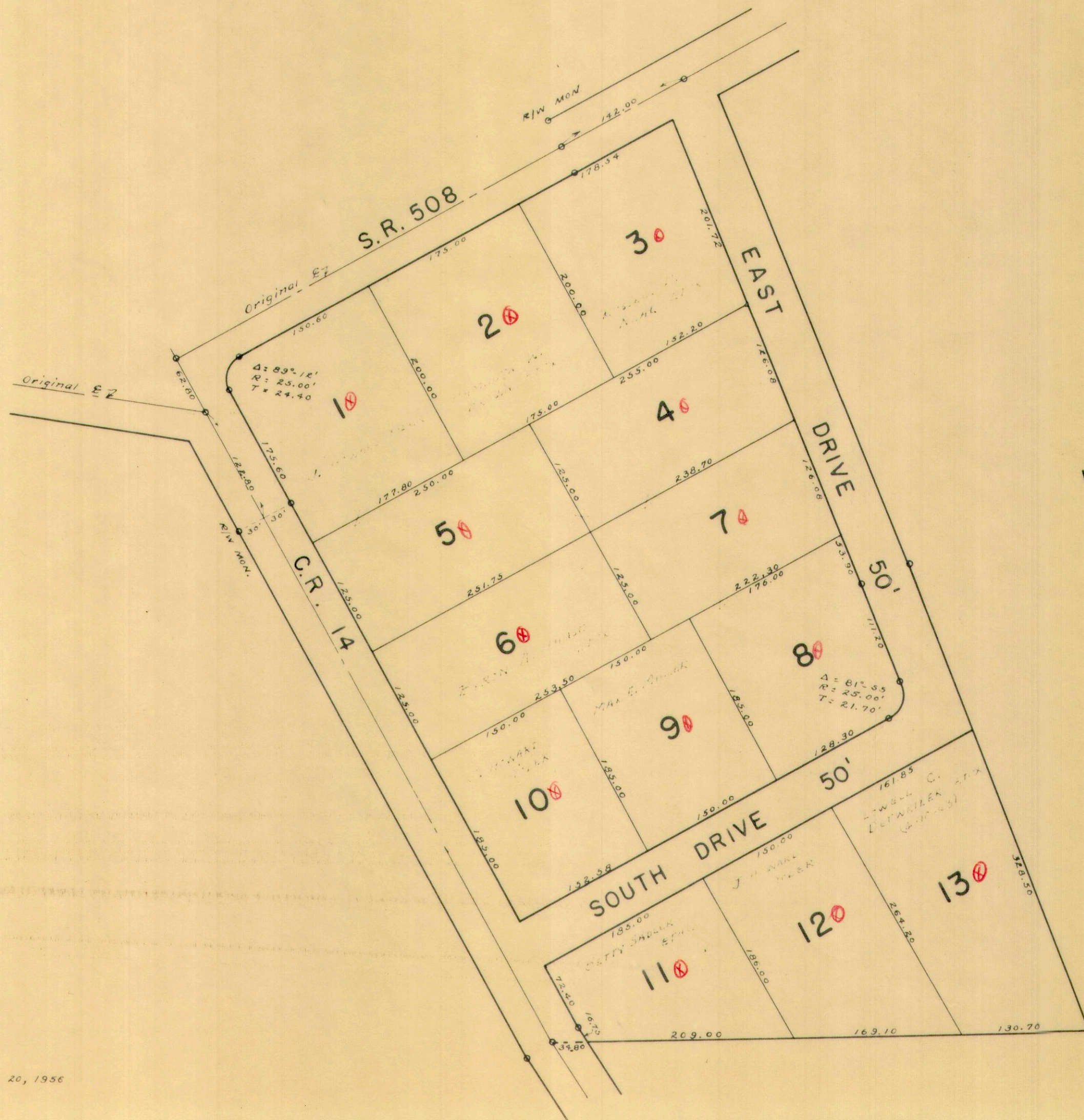
LIBERTY TOWNSHIP
SECTION 31 TOWN 4 RANGE 14

SOUTH GATE ACRES

SCALE: 1 INCH = 100 FEET



LIBERTY TOWNSHIP
SECTION 34 TOWN 5 RANGE 13
WOODLAND REST ALLOTMENT
SCALE: 1 INCH = 100 FEET

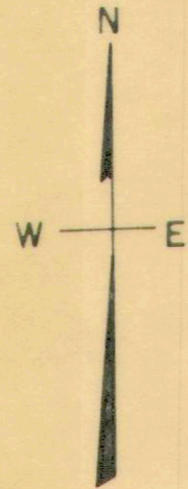


LIBERTY TOWNSHIP

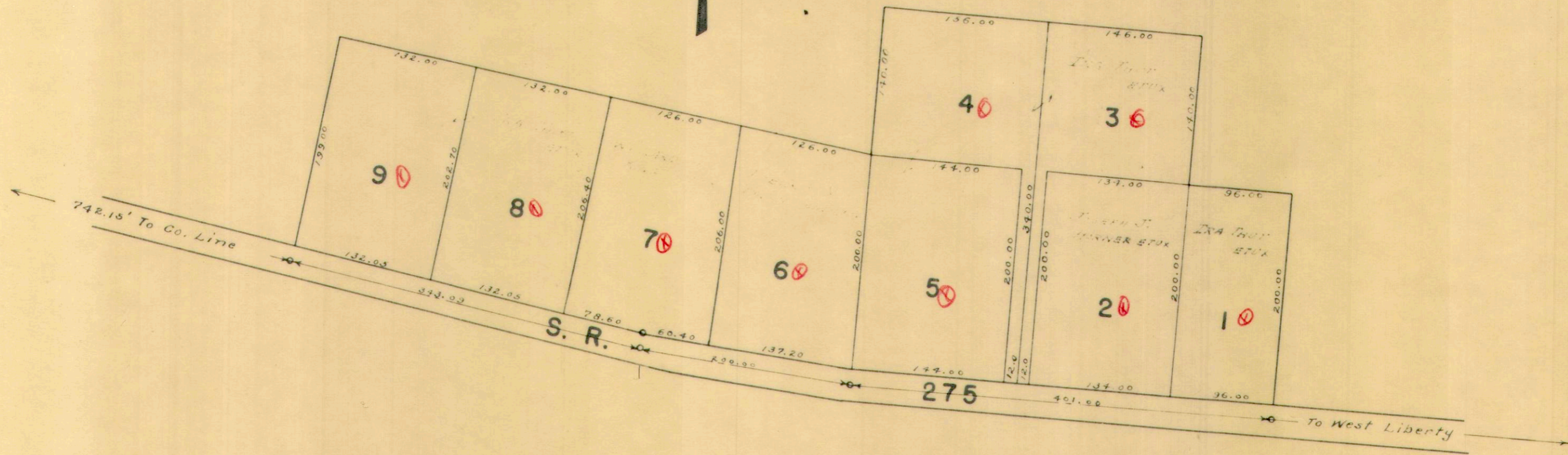
SECTION 33 TOWN 5 RANGE 13

SCALE 1 INCH = 100 FEET

HILLWOOD ACRES ALLOTMENT



Ira Thut et ux

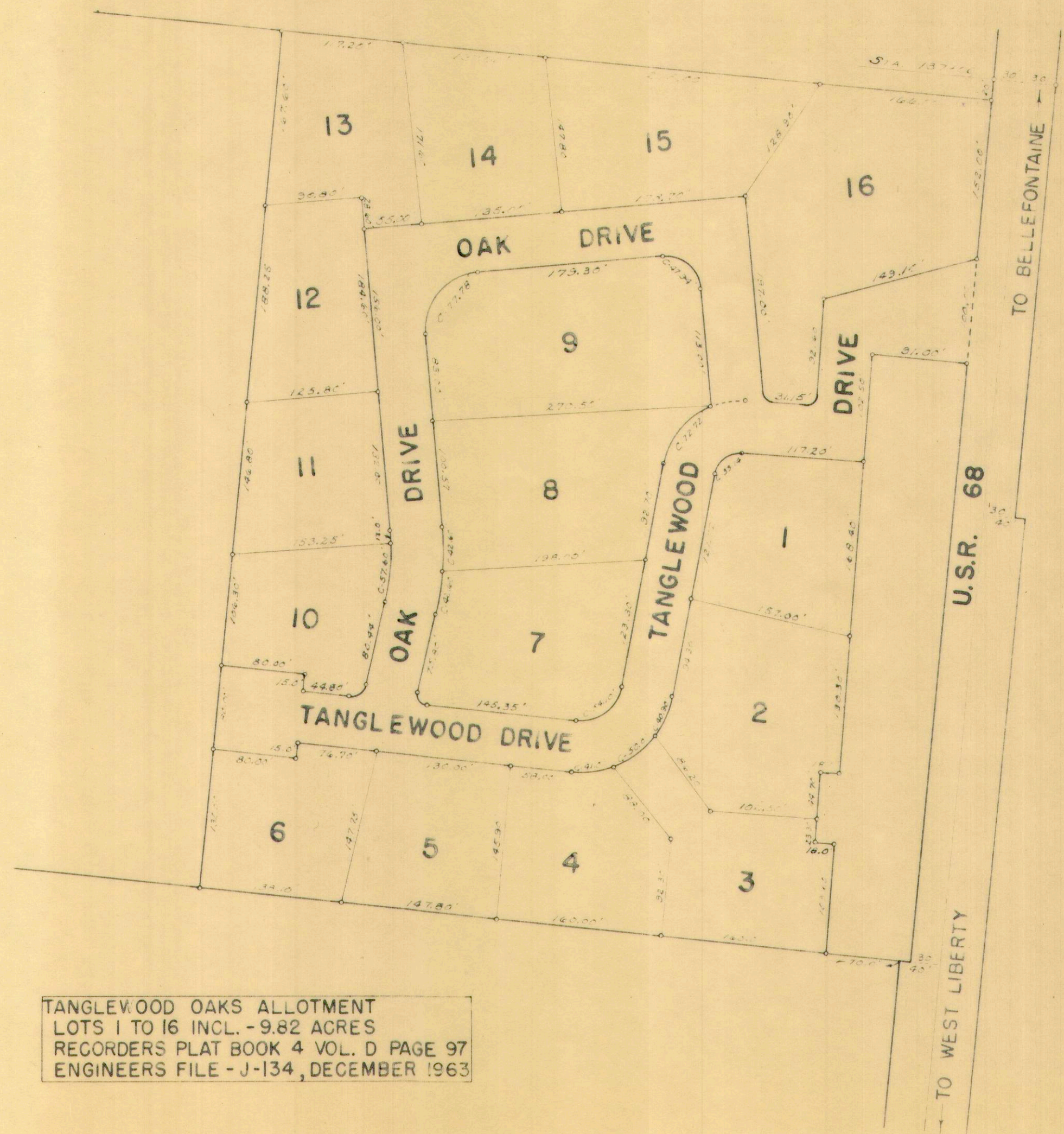


⊗

LIBERTY TOWNSHIP
TANGLEWOOD OAKS ALLOTMENT

SECTION 36 TOWN 5 RANGE 13

SCALE: 1" = 100'



LOT	NAME	DATE
1		
2		
3		
4		
5		
6		
7		
8		
9		
10		
11		
12		
13		
14		
15	HERMAN LOCKWOOD ETUX	
16		

1964 Dupl.
Lots 1-14, 16 Orrie L. Harshbarger et ux

TANGLEWOOD OAKS ALLOTMENT
LOTS 1 TO 16 INCL. - 9.82 ACRES
RECORDERS PLAT BOOK 4 VOL. D PAGE 97
ENGINEERS FILE - J-134, DECEMBER 1963

DRAWN BY DANIEL E. GILBERT
DECEMBER 4, 1963