

**MONROE**

**TOWNSHIP**

**1966**

MONROE TOWNSHIP  
INDEX MAP

CORRECTED TO  
*January 1, 1968*  
JANUARY 1, 1969



INDEX

VIRGINIA MILITARY SURVEYS

V.M.S.	PAGE	V.M.S.	PAGE
2220	15	4957	3
3138	8	5042	28
3159	12	5044	28
3221	11	5864	1
3222	10	6449	2
3223	17	6487	15
3224	16	6516	13
3225	22	6762	2
3226	23	7318	12
3227	24	8303	2
3228	25	8485	2
3229	26	9592	7
3230	27	9618	7
3242	7	9679	25
4479	14	9793	4
4492-West Part	20	9878	9
4492-East Part	21	10075	25
4493	5	10091	15
4497	8	10109	9
4525	5	10718	9
4570-North Part	18	10719	9
4570-South Part	19	10853	4
4676	12	12099	6

SECTION	TOWN	RANGE	PAGE
15	5	13	32
16	5	13	31
17	5	13	30
21	5	13	32
22	5	13	31
23	5	13	30
24	5	13	29
19	4	14	29
PICKRELLTOWN			33

MONROE TOWNSHIP  
 VIRGINIA MILITARY SURVEY 5864

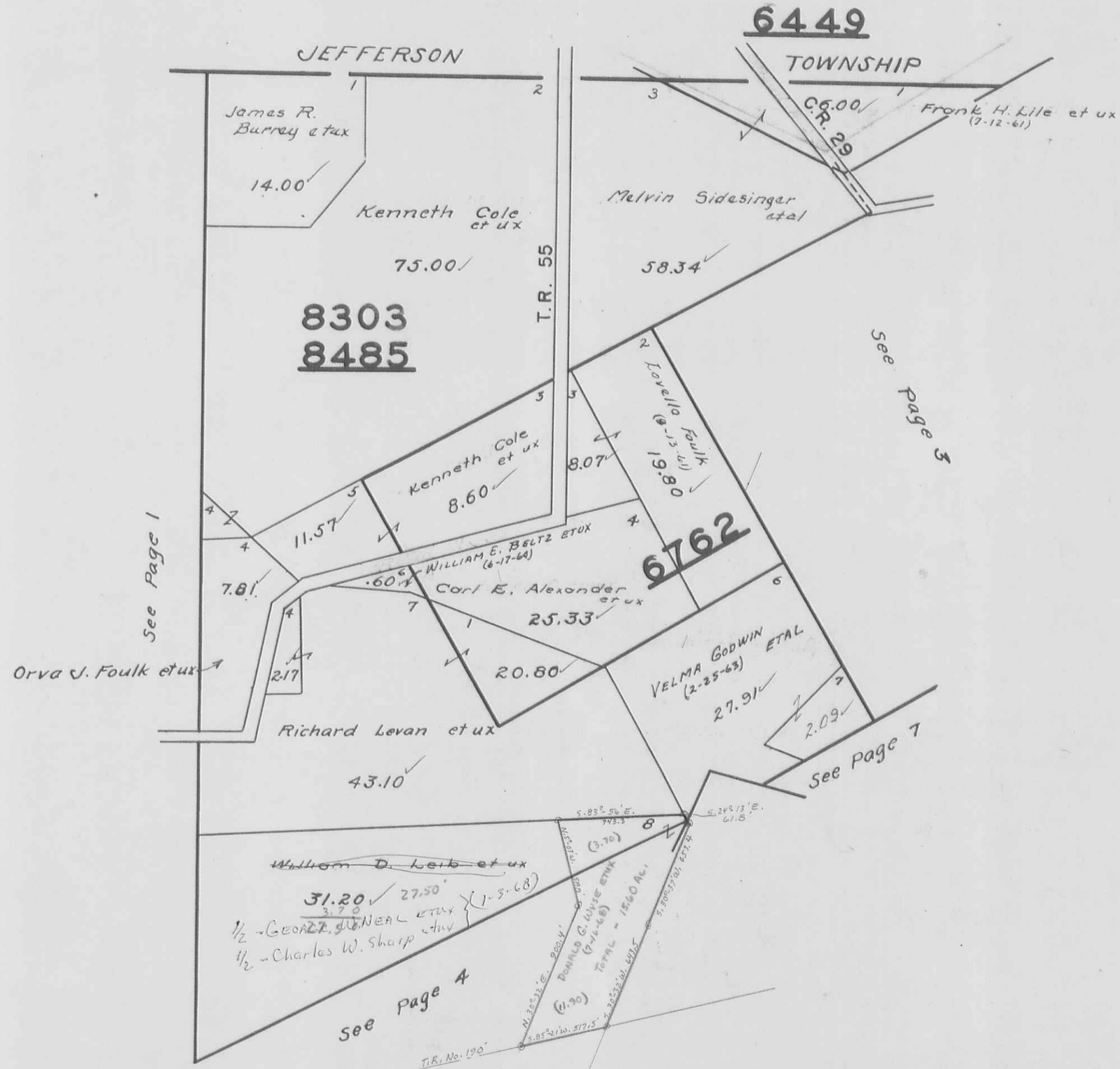
SCALE 10 CHAINS TO THE INCH



MONROE TOWNSHIP  
VIRGINIA MILITARY SURVEYS

8303  
8485  
6449  
6762

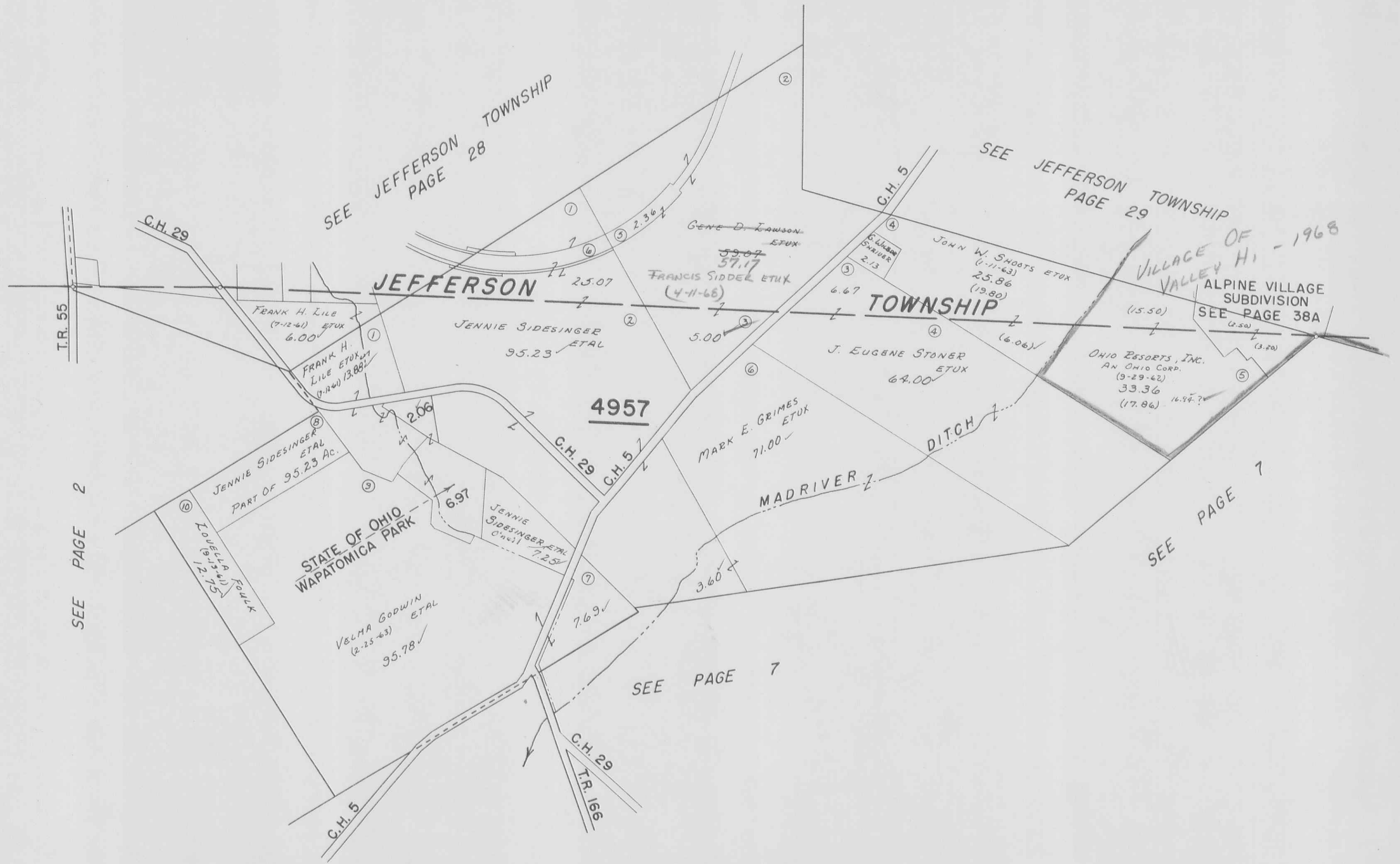
SCALE 10 CHAINS TO THE INCH



# MONROE TOWNSHIP

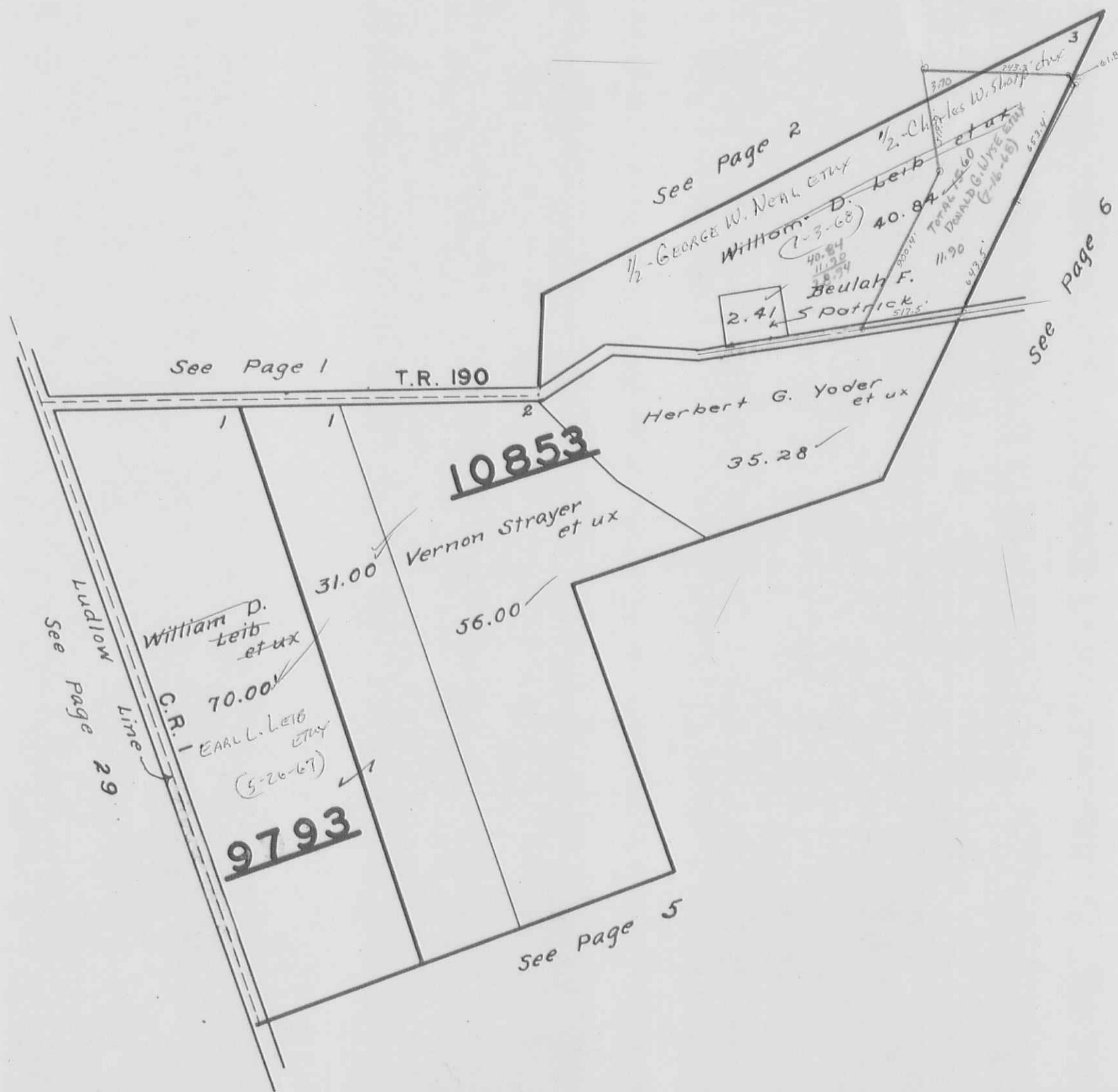
V.M.S 4957

SCALE: 1" = 10 CHAINS = 660'



VIRGINIA MILITARY SURVEYS <sup>9793</sup> 10853

SCALE 10 CHAINS TO THE INCH



MONROE TOWNSHIP  
 VIRGINIA MILITARY SURVEYS

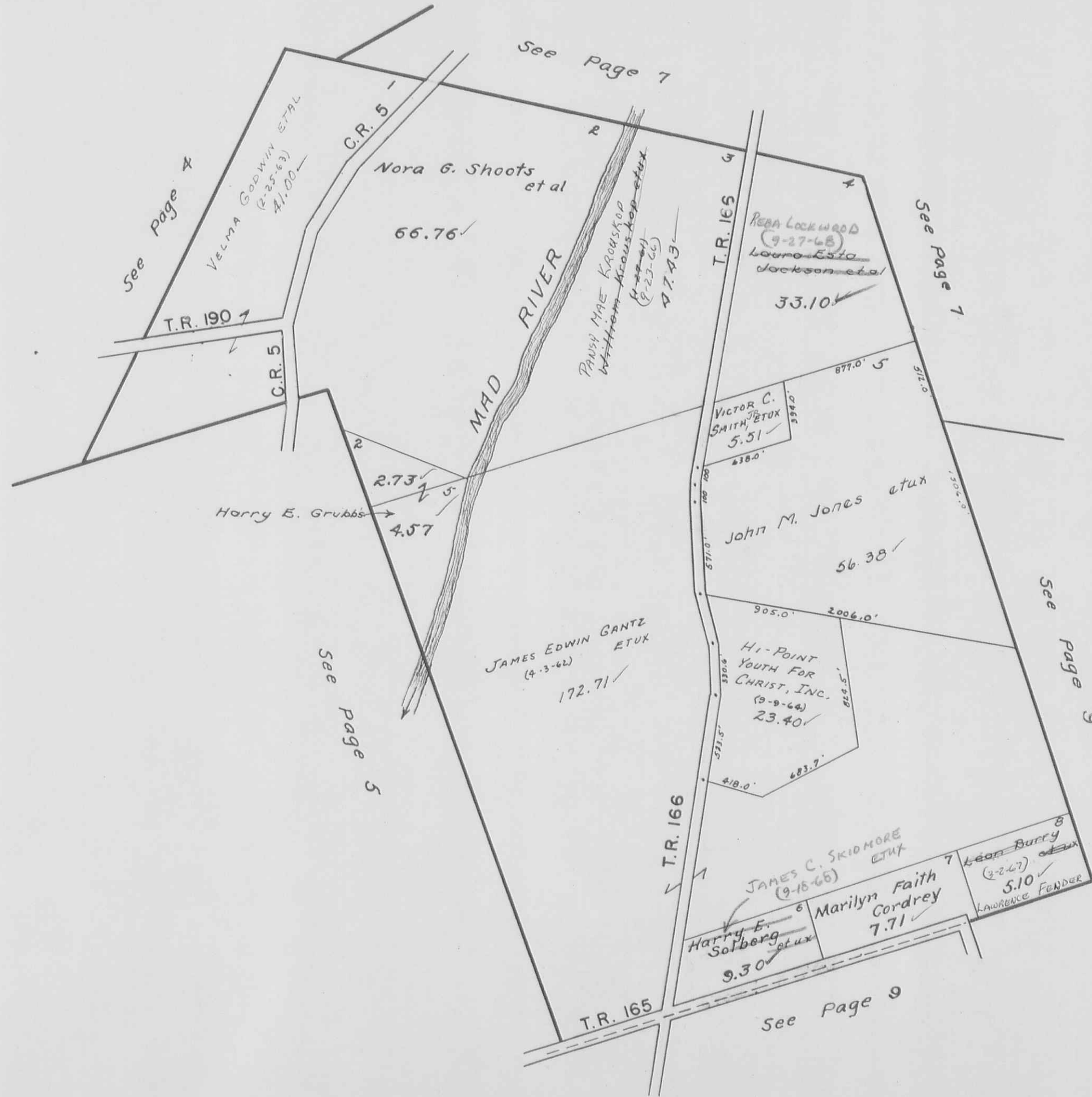
4493  
 4525

SCALE 10 CHAINS TO THE INCH





MONROE TOWNSHIP  
VIRGINIA MILITARY SURVEY 12099  
SCALE 10 CHAINS TO THE INCH



MONROE TOWNSHIP  
VIRGINIA MILITARY SURVEYS

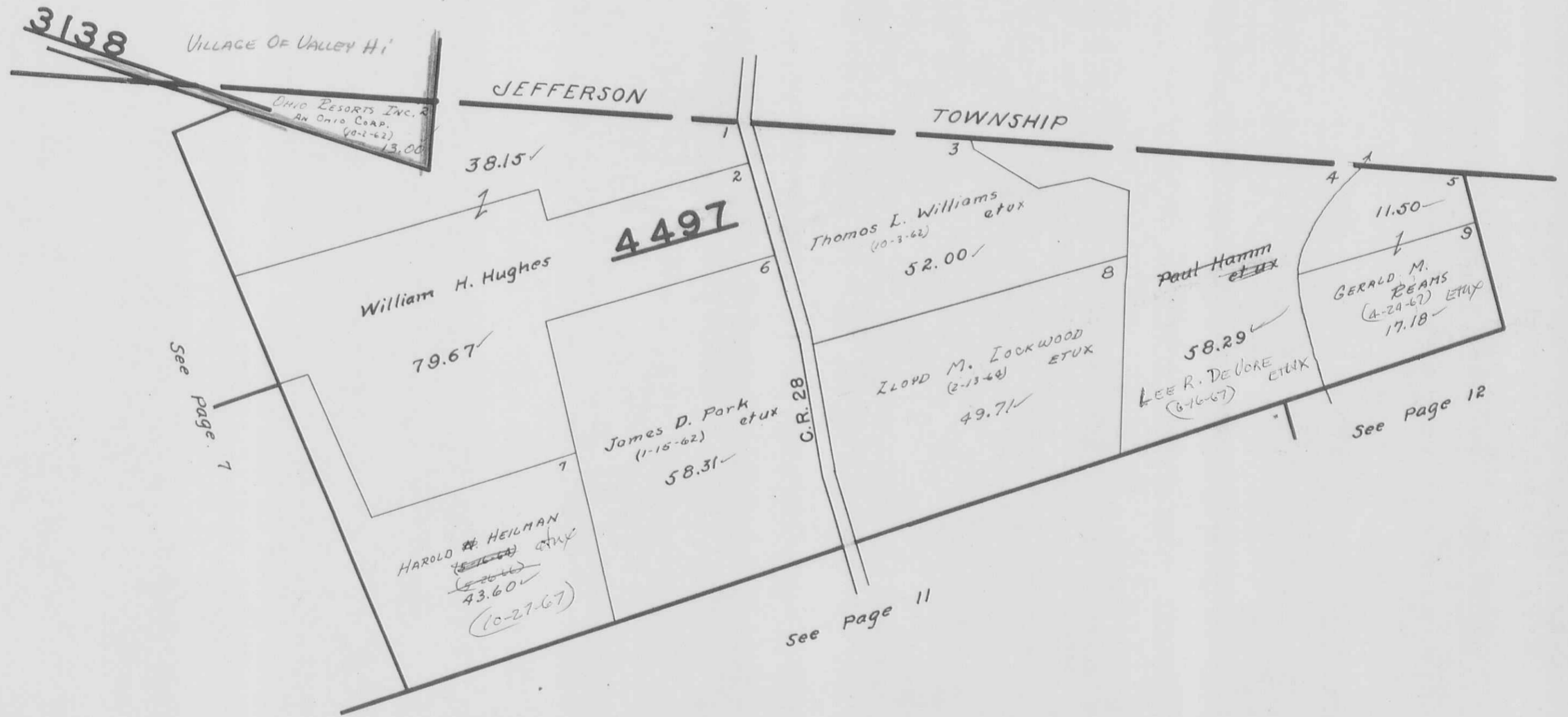
SCALE 10 CHAINS TO THE INCH

9592  
9618  
10075  
3242



VIRGINIA MILITARY SURVEYS 3138 4497

SCALE 10 CHAINS TO THE INCH



MONROE TOWNSHIP  
 VIRGINIA MILITARY SURVEYS

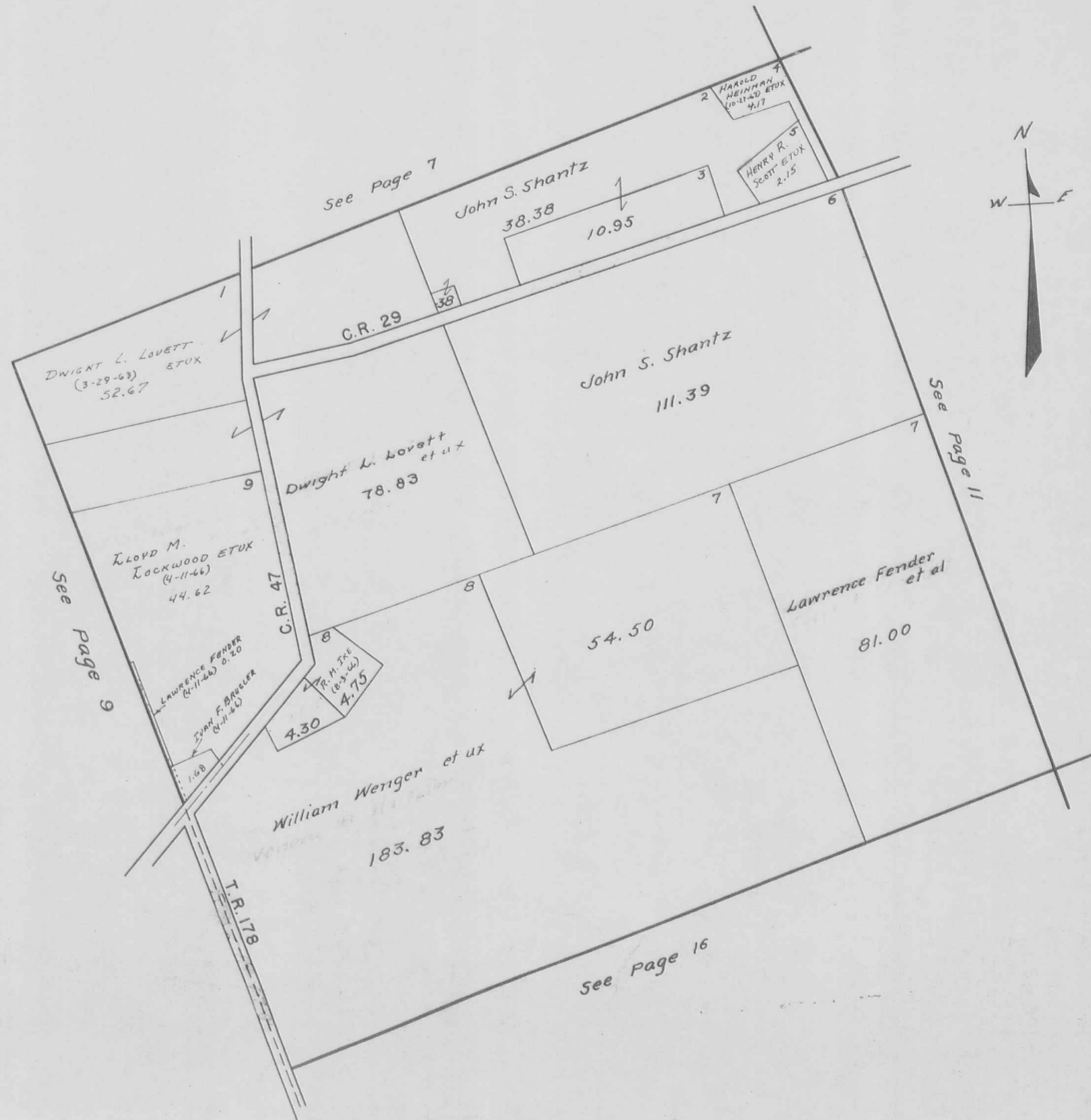
9878  
 10109  
 10718  
 10719

SCALE 10 CHAINS TO THE INCH

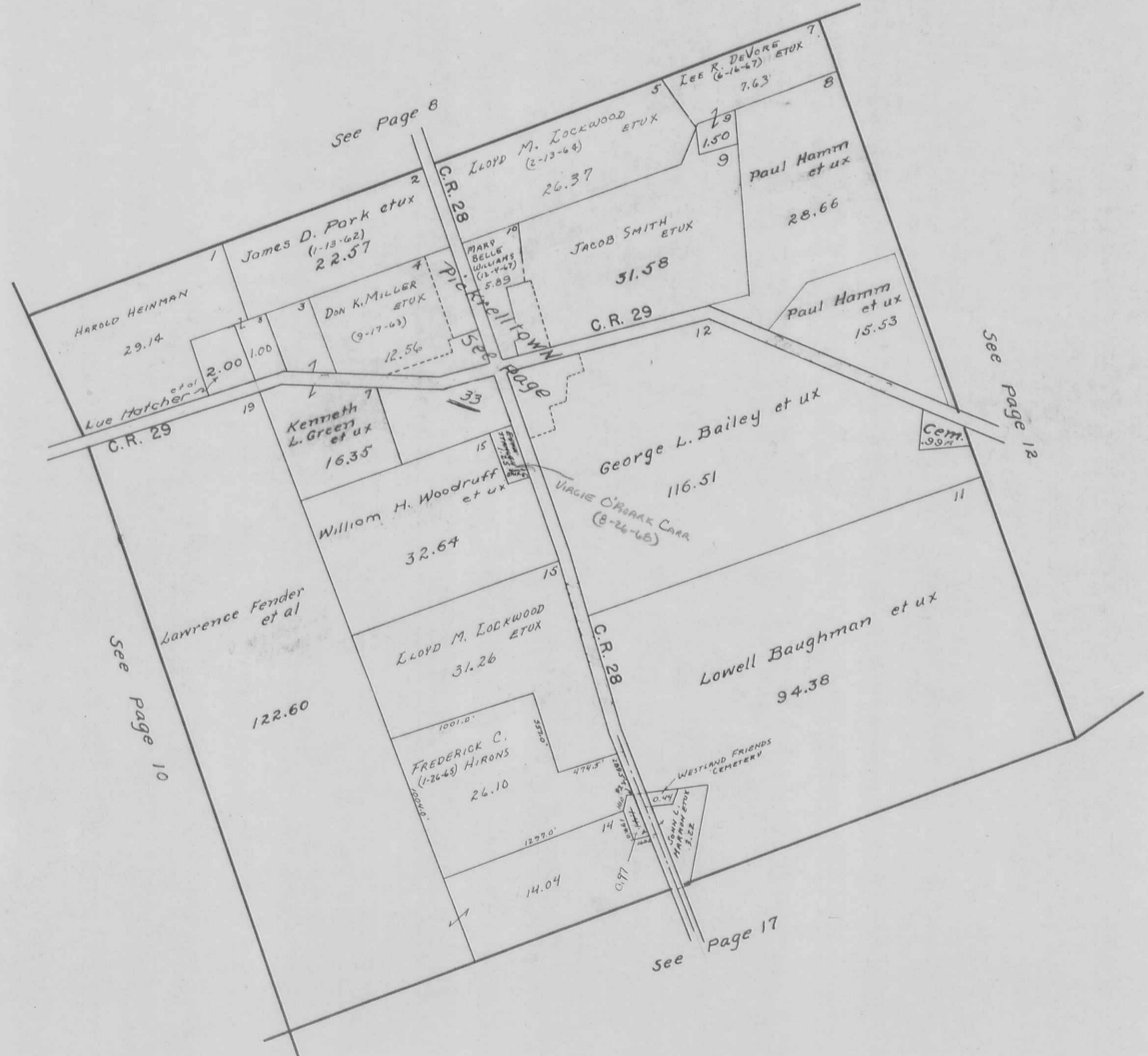


VIRGINIA MILITARY SURVEY 3222

SCALE 10 CHAINS TO THE INCH



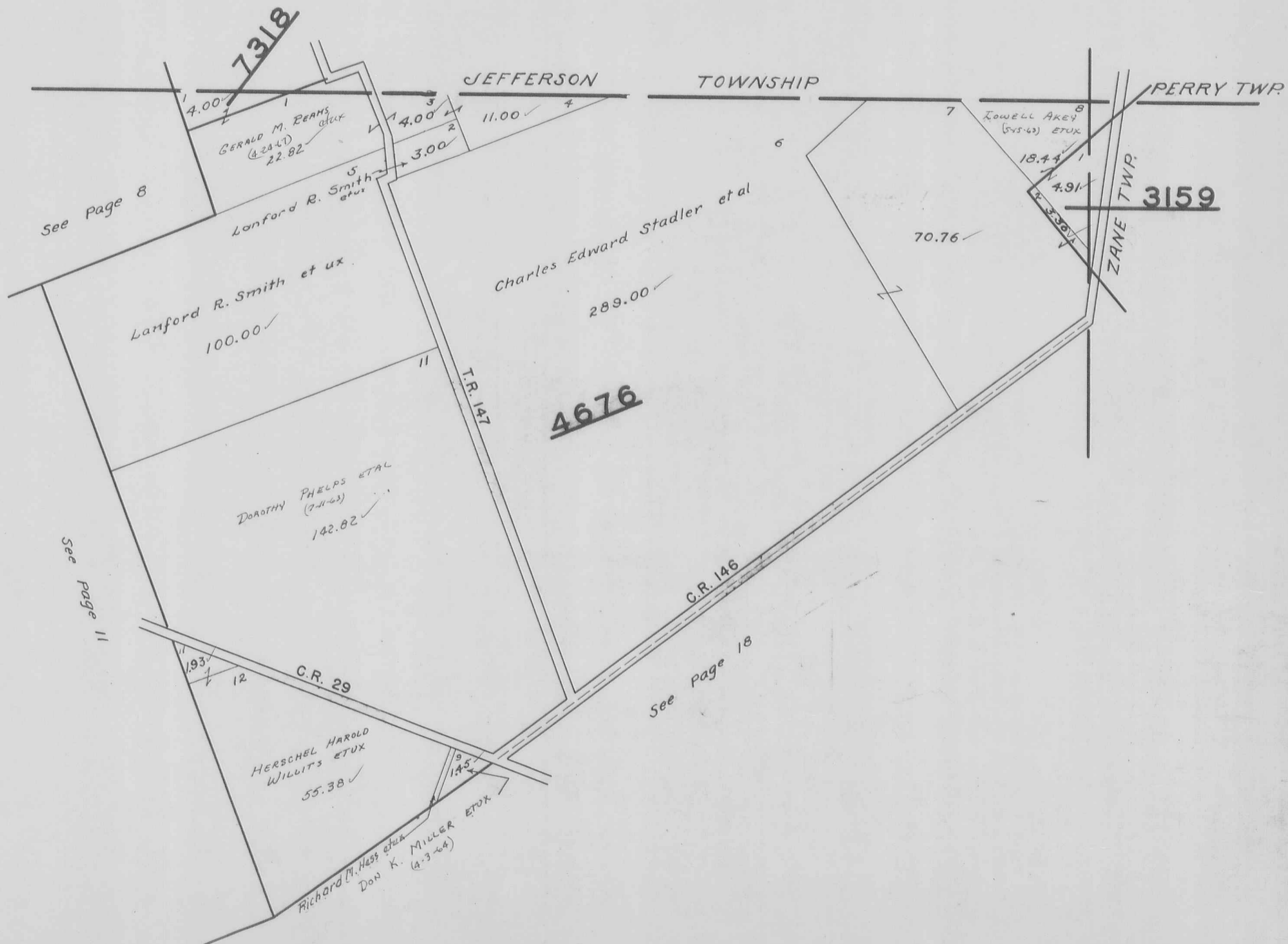
MONROE TOWNSHIP  
VIRGINIA MILITARY SURVEY 3221  
SCALE 10 CHAINS TO THE INCH



MONROE TOWNSHIP  
VIRGINIA MILITARY SURVEYS

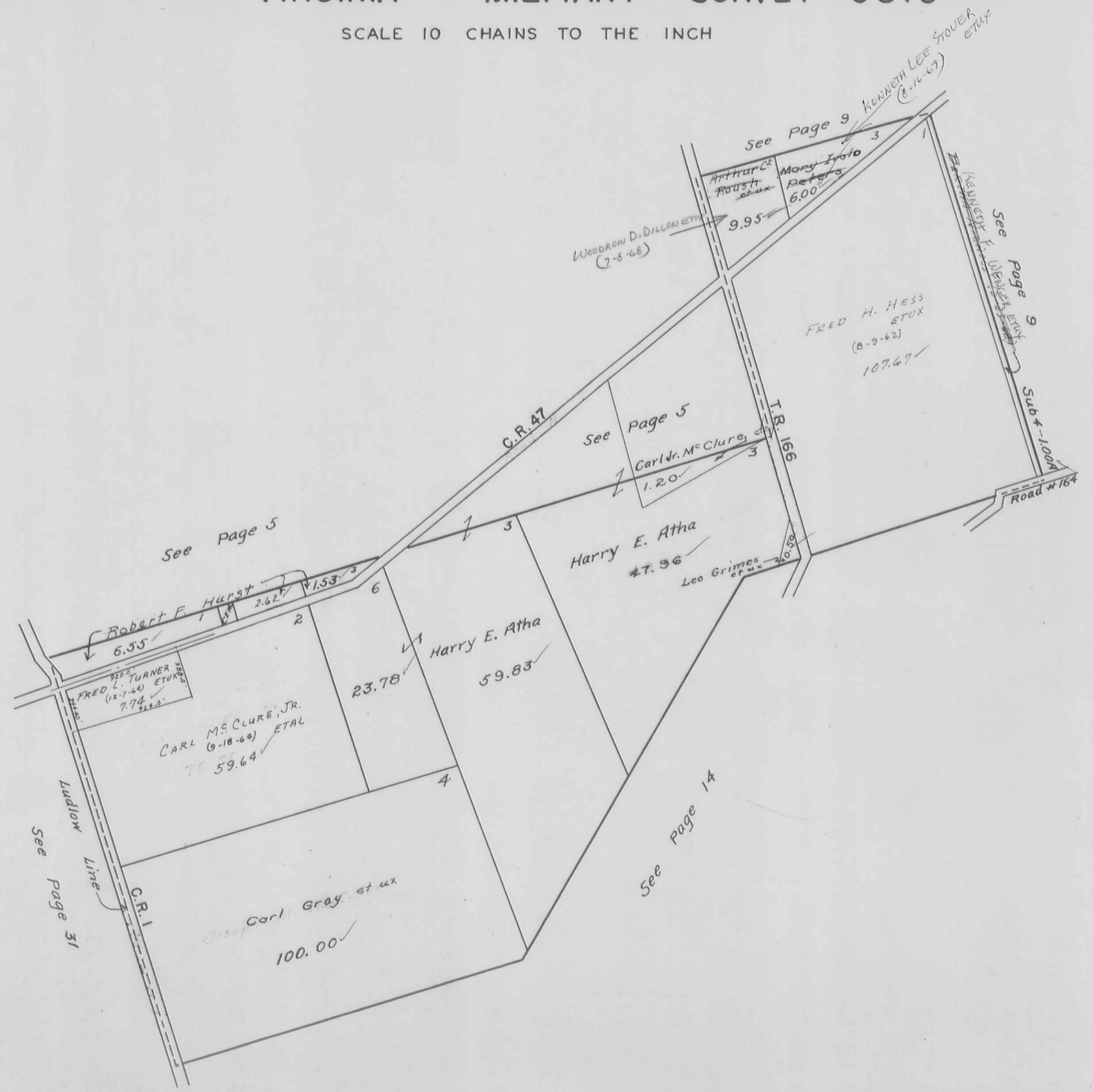
3159  
4676  
7318

SCALE 10 CHAINS TO THE INCH



MONROE TOWNSHIP  
VIRGINIA MILITARY SURVEY 6516

SCALE 10 CHAINS TO THE INCH





MONROE TOWNSHIP  
VIRGINIA MILITARY SURVEY 4479

SCALE 10 CHAINS TO THE INCH



See Page 13

See Page 9

See Page 15

See Page 31

See Page 21

See Page 20

See Page 33

H.E. Dysert

33.04  
23.23  
66.27

ROBERT D. GODWIN  
(11-12-66)

186.36  
33.04  
153.32  
56.95  
96.37

W.H. Kimball et ux  
54.00

NELLIE F. WADE  
(9-11-64)  
54.00

CHESTER V. BERRY ETUX  
(11-22-65) 1632.55

J. HOWARD PUDER ETUX  
(12-10-68)  
Grace Van Buskirk

Inez Leona Piatt Gray et vir  
61.88

George K. Miller et ux  
(3-22-66)  
62.53

Raldo H. Wade et ux  
16.37

MARY ELLEN BUSIC ETUX  
Francis M. Wade et al  
10.09

MAURY L. SUTTON ETUX  
(9-18-64)  
8.19

Satoma Thomas et al  
11.57

Riley Kane et al  
21.71

CYRIL C. WOODARD  
(12-23-63) ETUX  
159.30

Forrest M. Kouffman et ux  
83.55

E. Byron Davis et ux  
36.55

JAMES C. RANDALL ETUX  
(9-30-68)

S.H. 245

T.R. 166  
T.R. 164

Improvement

Ditch

C.R. 1

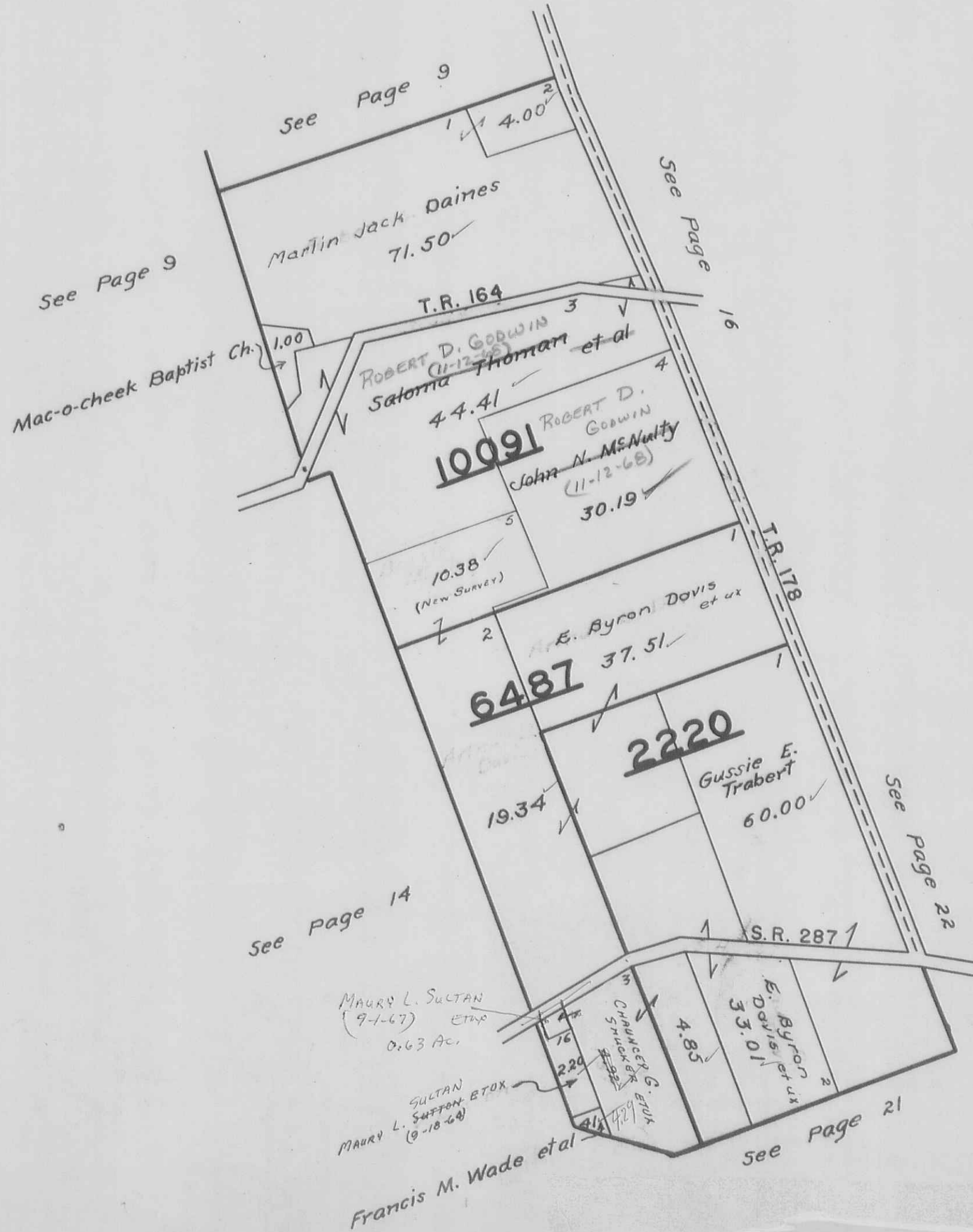
Macochee

Ludlow Line

ROBERT D. GODWIN  
(11-12-66)

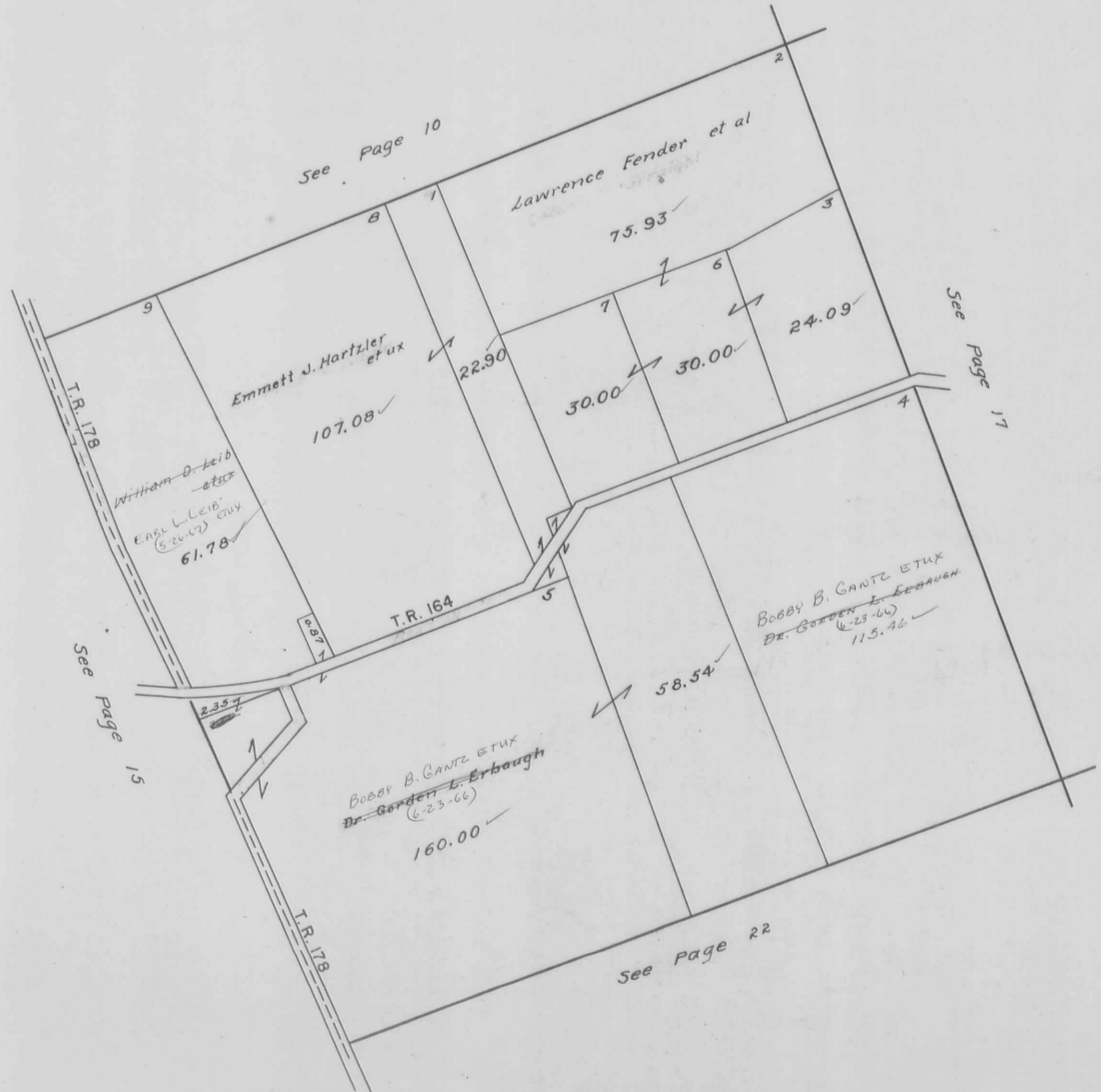
MONROE TOWNSHIP  
VIRGINIA MILITARY SURVEYS  
SCALE 10 CHAINS TO THE INCH

10091  
6487  
2220

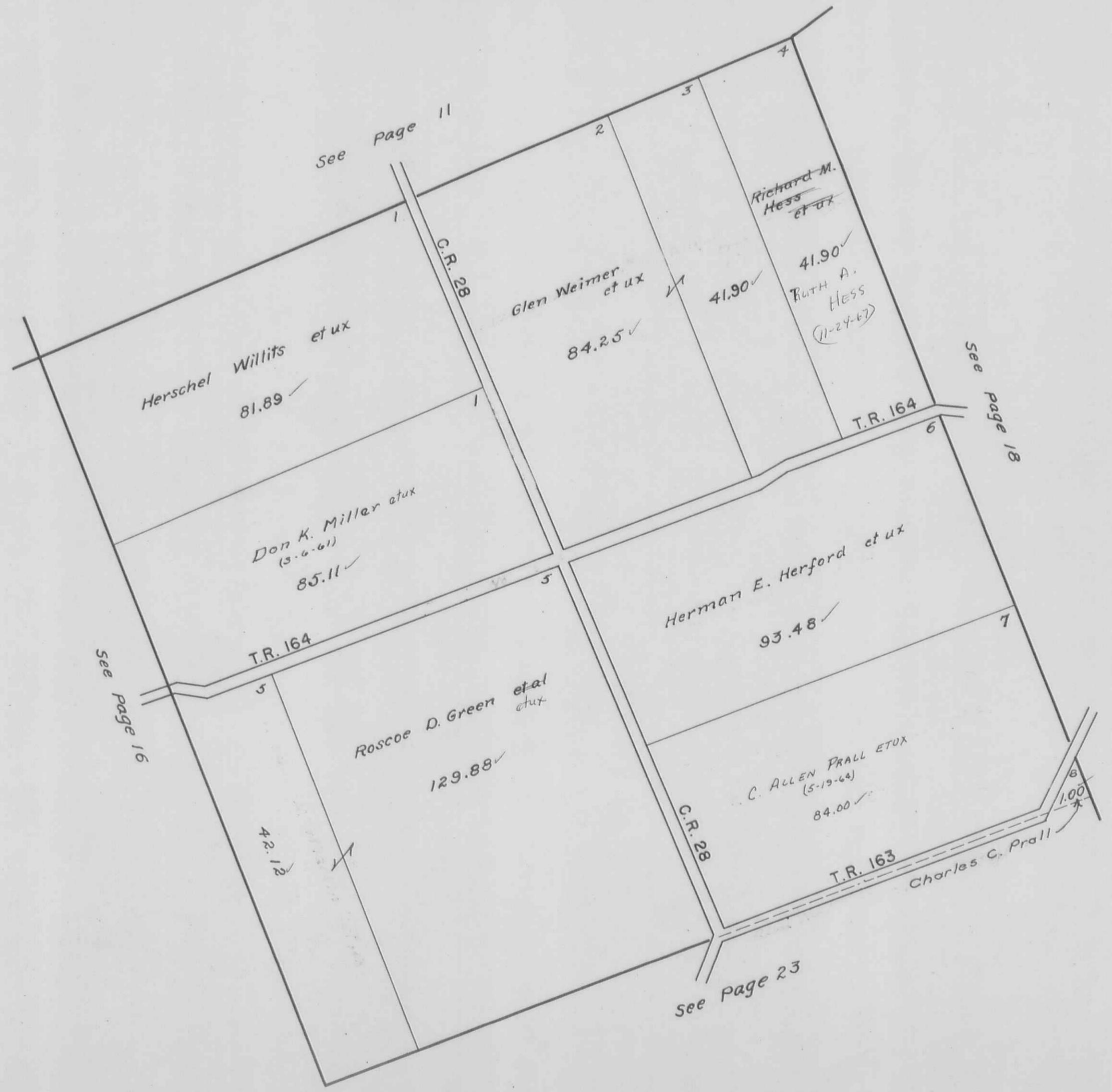


VIRGINIA MILITARY SURVEY 3224

SCALE 10 CHAINS TO THE INCH

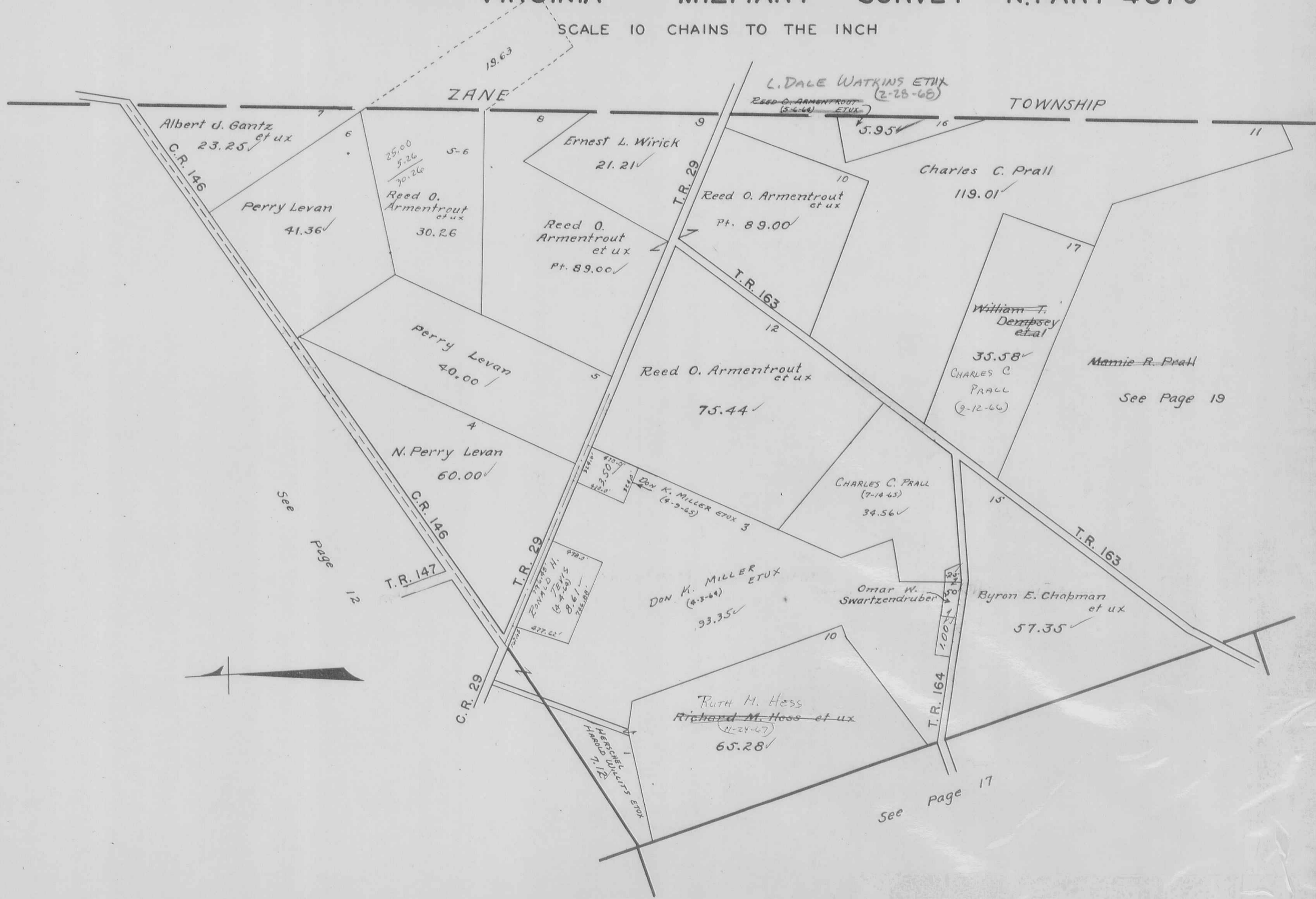


MONROE TOWNSHIP  
VIRGINIA MILITARY SURVEY 3223  
SCALE 10 CHAINS TO THE INCH



VIRGINIA MILITARY SURVEY N. PART 4570

SCALE 10 CHAINS TO THE INCH



MONROE TOWNSHIP PAGE 19  
VIRGINIA MILITARY SURVEY S. PART 4570  
SCALE 10 CHAINS TO THE INCH



MONROE TOWNSHIP  
 VIRGINIA MILITARY SURVEY W. PART 4492

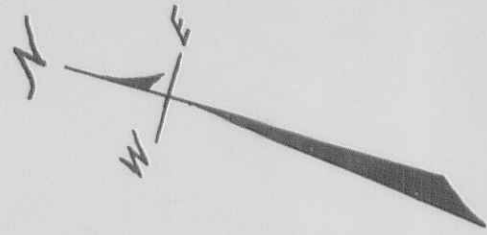
SCALE 10 CHAINS TO THE INCH



H.E. Dysert

MONROE TOWNSHIP  
 VIRGINIA MILITARY SURVEY E.PART 4492

SCALE 10 CHAINS TO THE INCH



See Page 24

See Page 22

See Page 15

See Page 14

See Page 28

See Page 20

See Page 20

County Line  
 CHAMPAIGN COUNTY

H.E. Dysert



MONROE TOWNSHIP  
VIRGINIA MILITARY SURVEY 3225

SCALE 10 CHAINS TO THE INCH



MONROE TOWNSHIP  
VIRGINIA MILITARY SURVEY 3226

SCALE 10 CHAINS TO THE INCH



H.E. Dysert

VIRGINIA MILITARY SURVEY 3227

SCALE 10 CHAINS TO THE INCH



MONROE TOWNSHIP  
VIRGINIA MILITARY SURVEYS  
SCALE 10 CHAINS TO THE INCH

3228  
9679



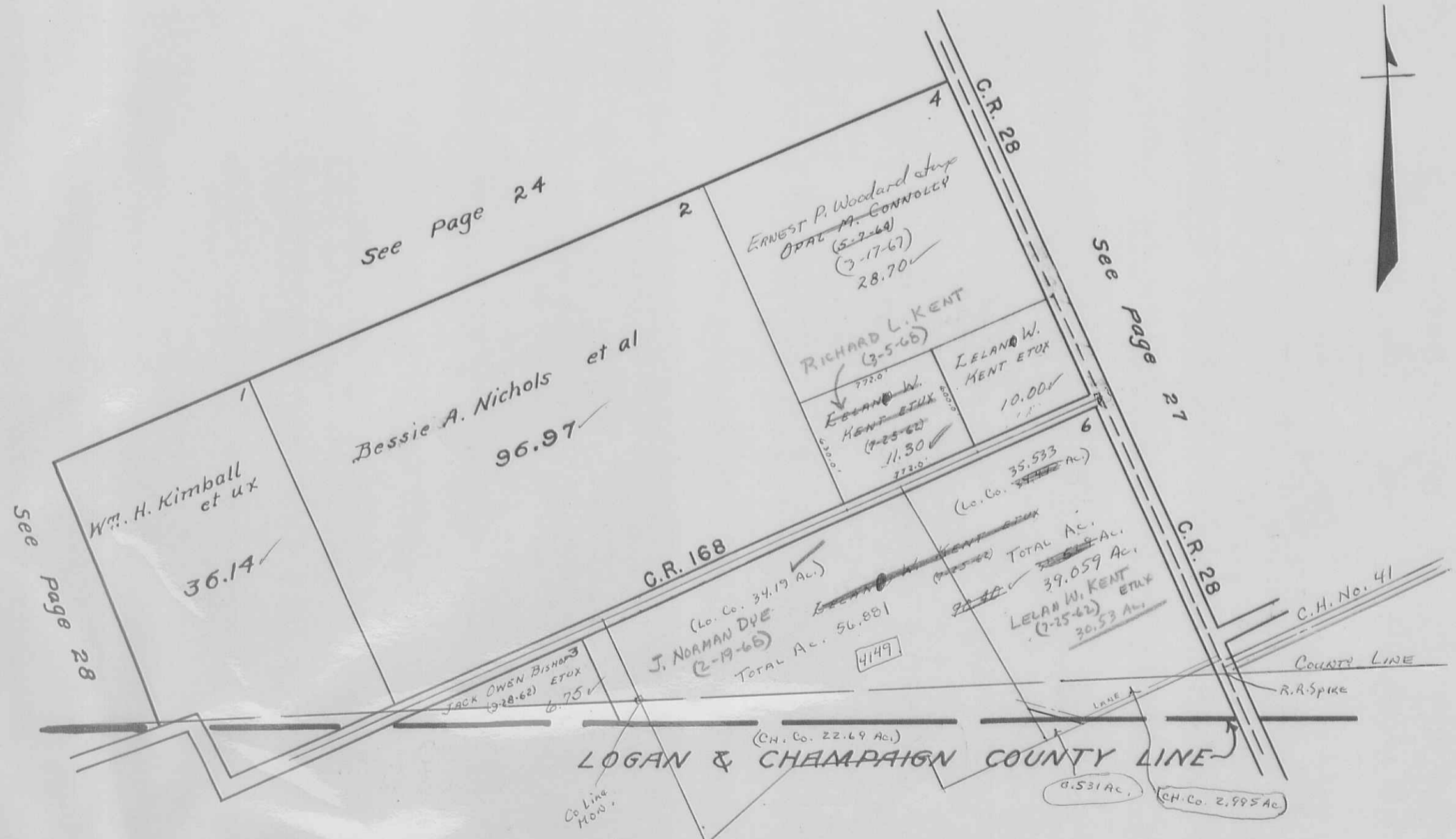
MONROE TOWNSHIP

V.M.S. 3229

SCALE: 1" = 10 CHAINS = 660'



MONROE TOWNSHIP  
 VIRGINIA MILITARY SURVEY 3229  
 SCALE 10 CHAINS TO THE INCH



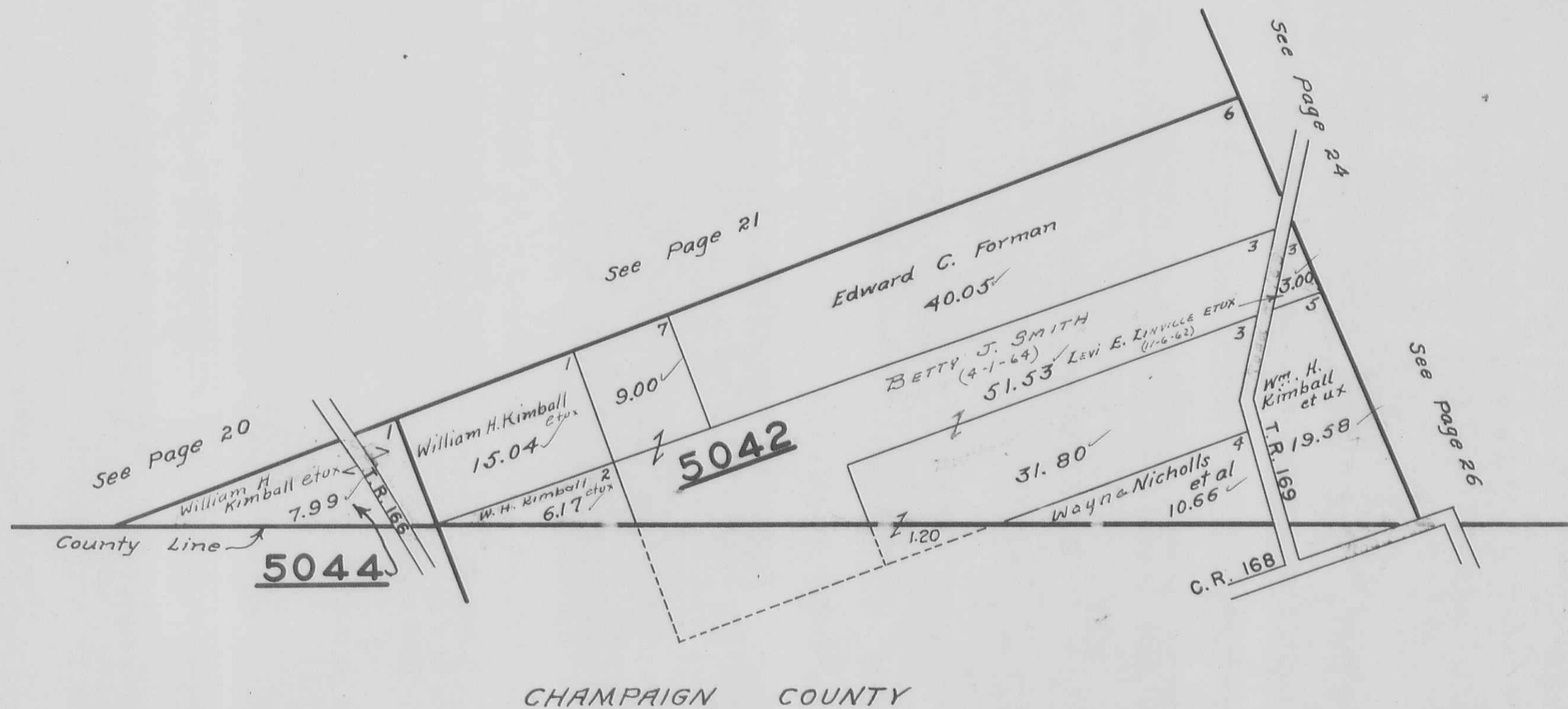
VIRGINIA MILITARY SURVEY 3230

SCALE 10 CHAINS TO THE INCH



MONROE TOWNSHIP  
VIRGINIA MILITARY SURVEYS  
SCALE 10 CHAINS TO THE INCH

5042  
5044

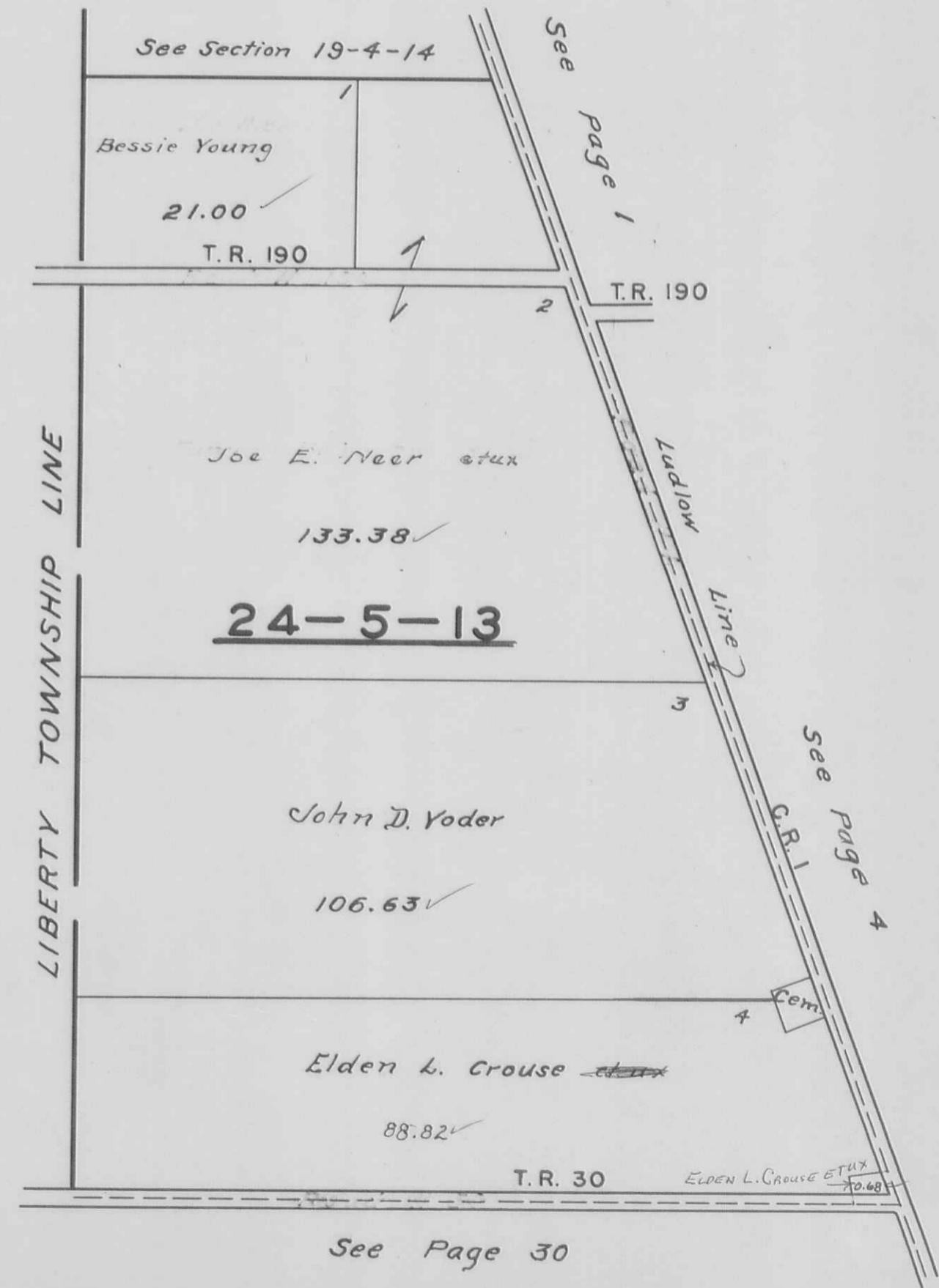
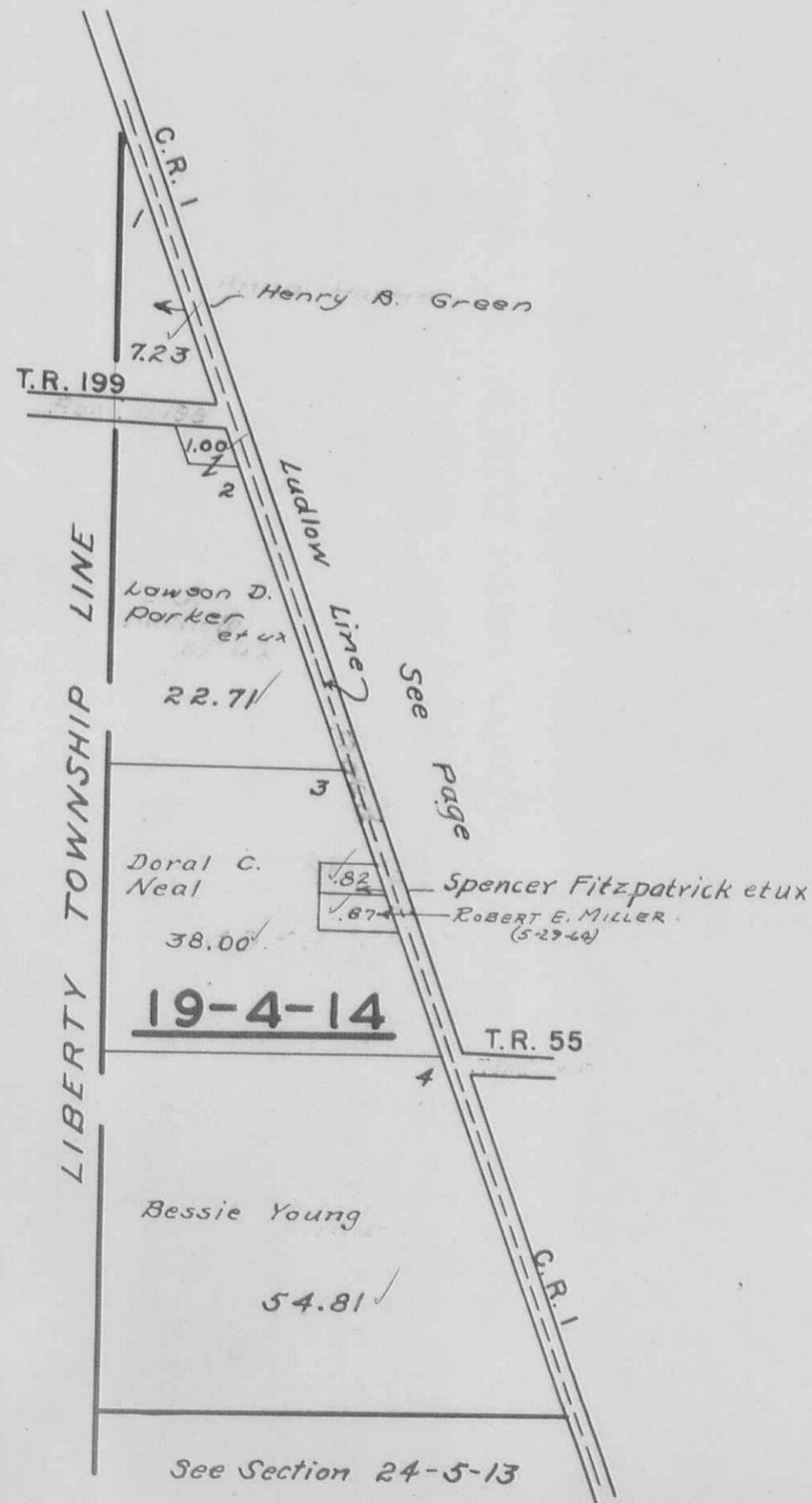




MONROE TOWNSHIP

SECTION 19 TOWN 4 RANGE 14  
SECTION 24 TOWN 5 RANGE 13

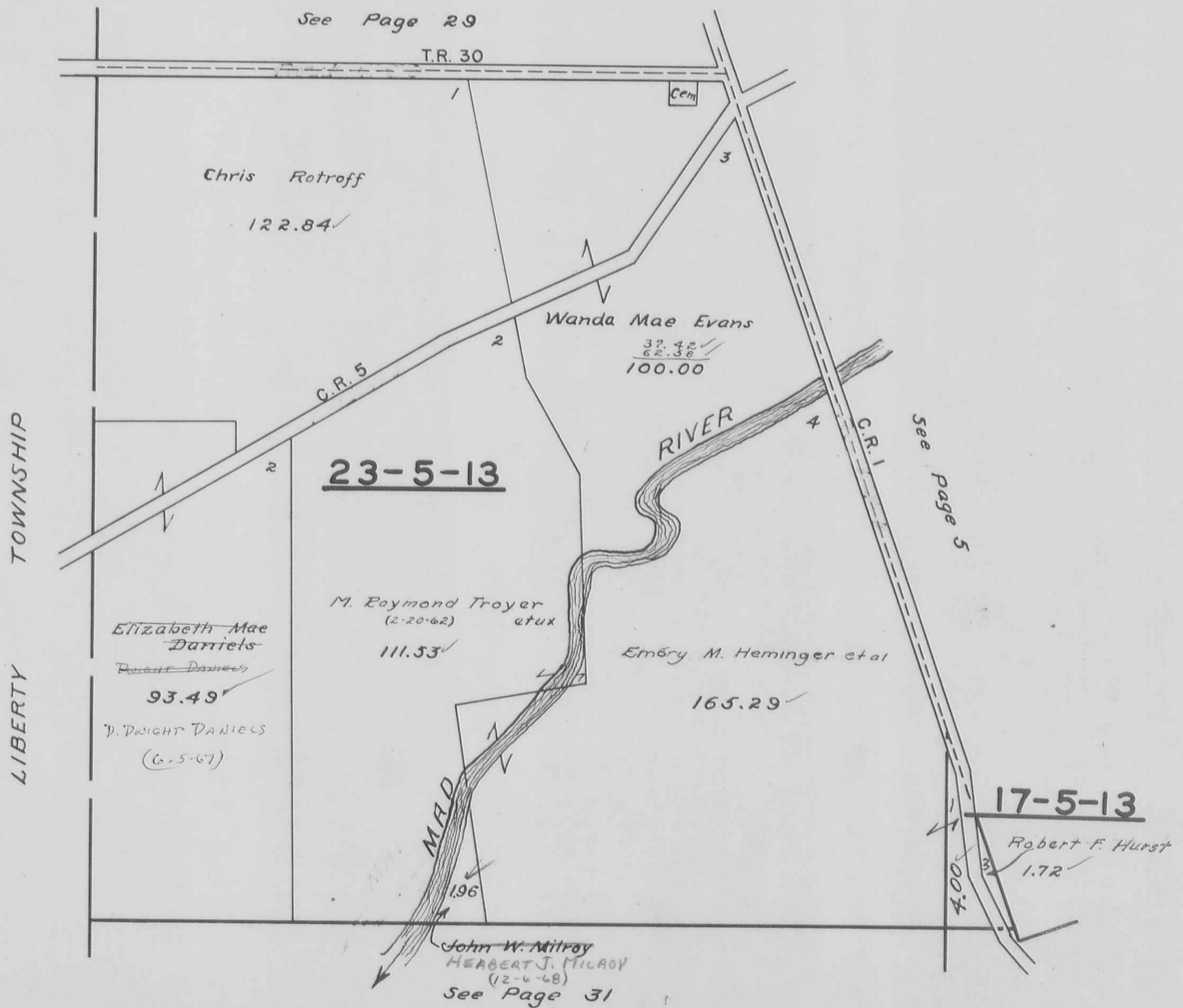
SCALE 10 CHAINS TO THE INCH



MONROE TOWNSHIP

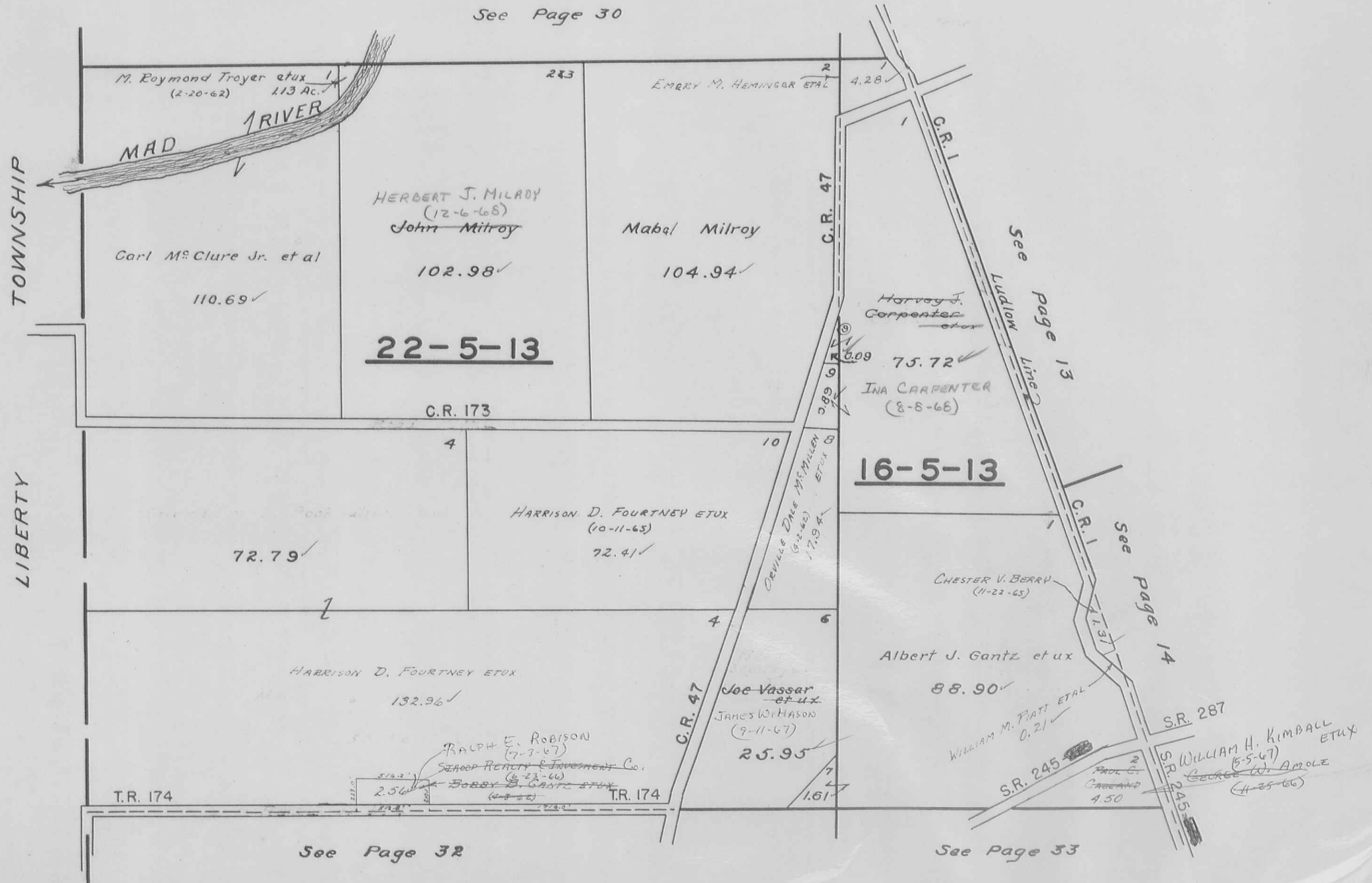
SECTION 17 TOWN 5 RANGE 13  
SECTION 23 TOWN 5 RANGE 13

SCALE 10 CHAINS TO THE INCH



MONROE TOWNSHIP  
 SECTION 22 TOWN 5 RANGE 13  
 SECTION 16 TOWN 5 RANGE 13

SCALE 10 CHAINS TO THE INCH

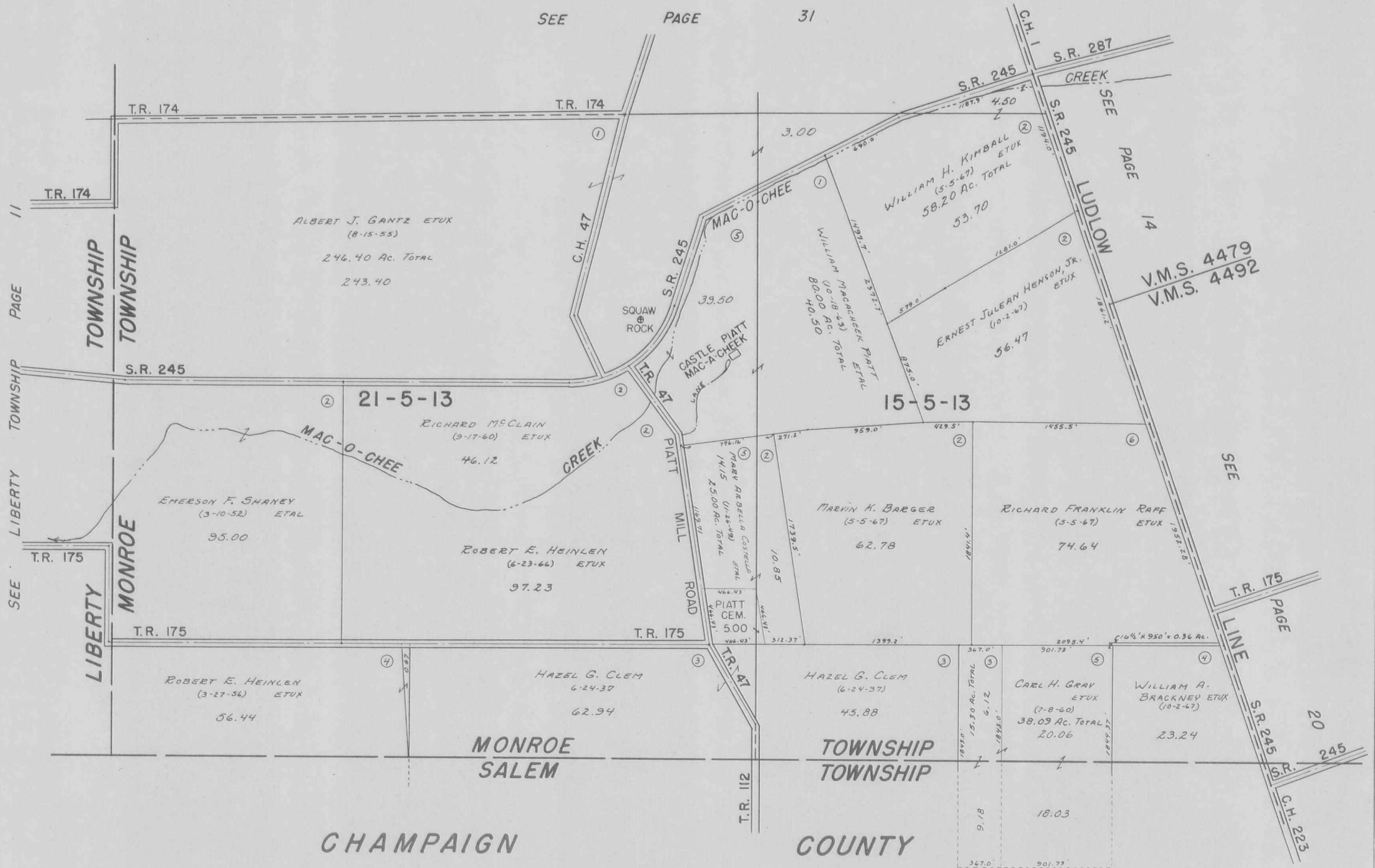


# MONROE TOWNSHIP

SEC. 15 & 21 TOWN 5 RANGE 13

SCALE: 1" = 10 CHAINS = 660'

SEE PAGE 31



DRAWN: JUNE 15, 1967  
DANIEL E. GILBERT, T.M.D.

PICKRELLTOWN

SCALE 100 FEET TO THE INCH

3221

