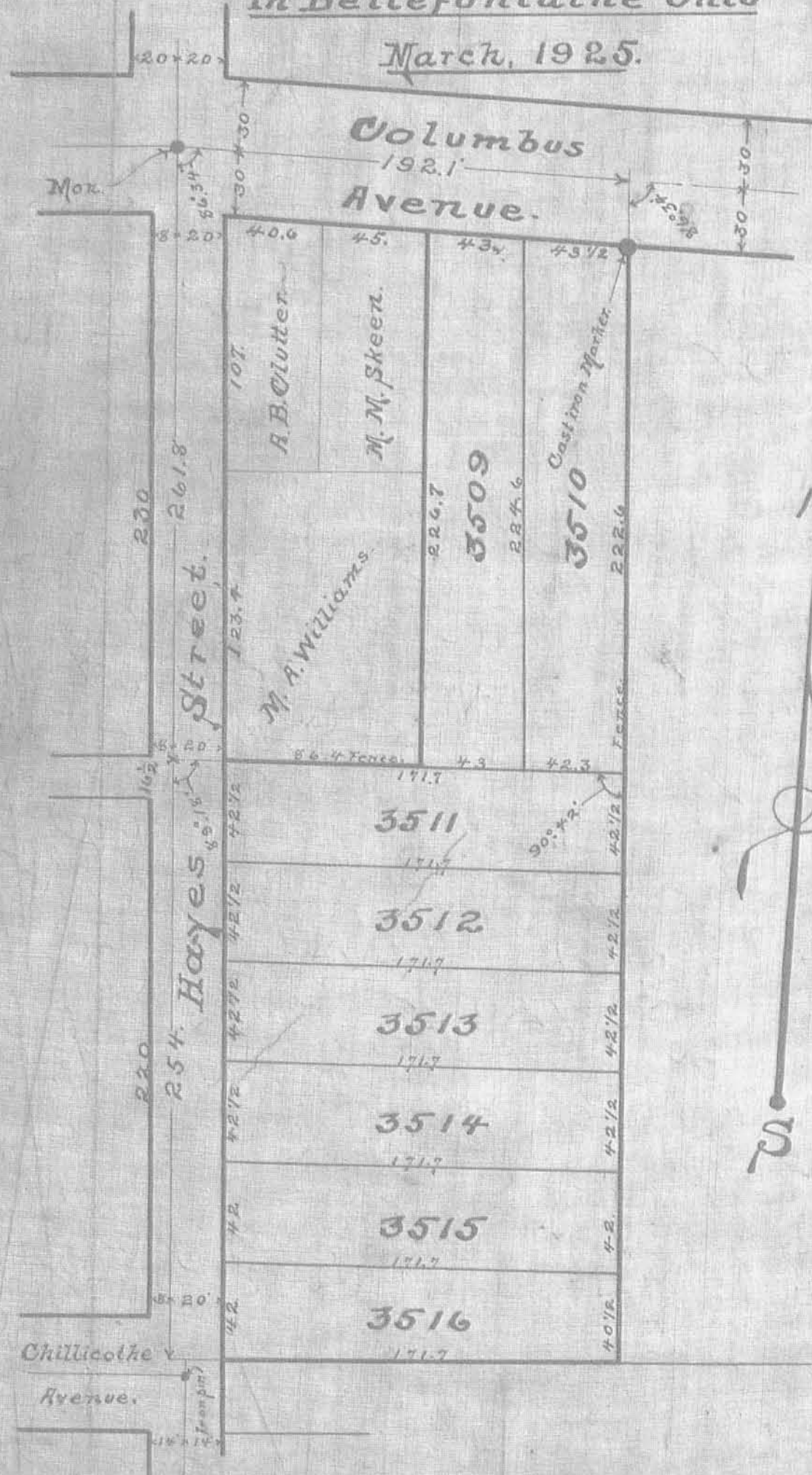


Plat of Grandi Subdivision.

In Bellefontaine Ohio

March, 1925.



Surveyors Certificate.

This Plat correctly shows Grandi Subdivision, in Bellefontaine Ohio, being part of Original Lot 13, of Whites Subdivision of Survey 4990, as surveyed by me on the 13th day of March, 1925.

All measurements and dimensions are given in feet.

Columbus Avenue is 60 feet wide. Hayes Street is 28 feet wide.

I put in a cast-iron marker, 2 1/2" x 2 1/2" x 24". (city pattern), at the north-east corner of lot No 3510. An old survey stake is at north-west corner lot 3509.

At each lot corner I drove an oak stake, 2" x 2" x 24", except at lots 3509 and 3510, as above noted.

This Subdivision occupies all of the 1 1/2 acres, Laura D. Grandi, Sub. 31, Survey No 4990, as shown on County Auditors Duplicate.

March 16th 1925

D. A. Buchanan, Surveyor.

Approved J. P. Core County Surveyor

Acceptance.

This plat of Grandi Subdivision, is hereby accepted and approved by me, as the owner thereof on this 21 day of March 1925

Attest.

J. F. Knight

S. L. Smith

Signed.

Laura D. Grandi

County Auditors Office.

This Subdivision transferred this 26th

day of March 1925.

W. W. Corbett

County Auditor

County Recorders Office.

This plat received for record this 1st

day of April

1925, at 8 A. M. and it is Recorded in Plat

Book A. Vol 2

Recorded April 4, 1925 page 46

Sam A. Carter

County Recorder.

A-96
KK-45