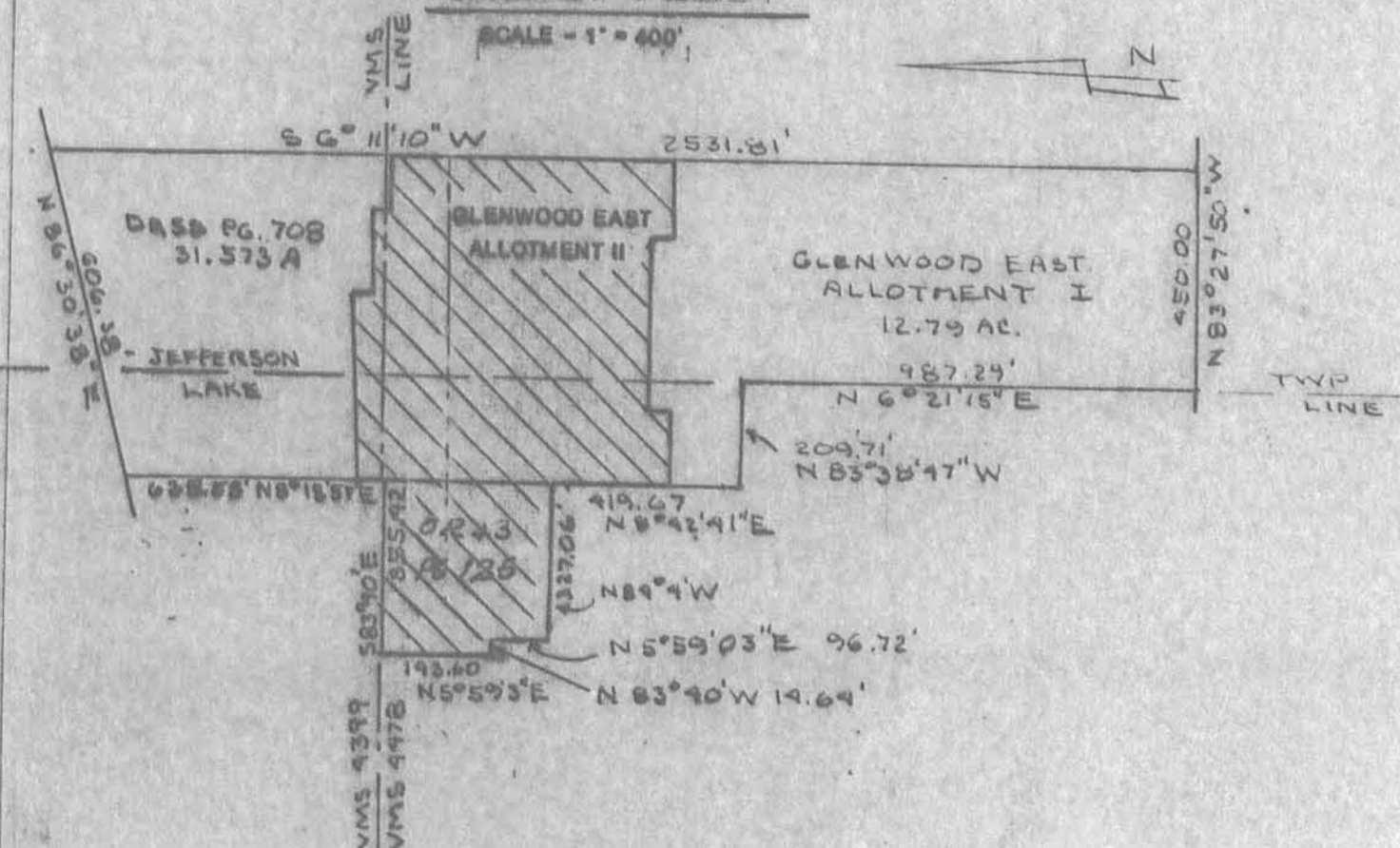


CURVE DATA:

NO.	RADIUS	ARC	DELTA	TANGENT	CHORD	CHORD-BEARING
1	607.06	127.99	012°04'47"	64.23	127.75	S89°42'23.5"E
2	590.00	122.87	011°55'57"	61.66	122.65	S89°46'48.5"E
3	428.70	101.46	013°33'38"	50.97	101.23	S00°17'38.0"E
4	25.00	39.27	090°00'00"	25.00	35.36	N51°11'10.0"W
5	25.00	39.27	090°00'00"	25.00	35.36	N38°48'50.0"W
6	25.00	39.27	090°00'00"	25.00	35.36	S51°11'10.0"W
7	620.00	129.12	011°55'57"	64.80	128.89	N89°46'48.5"W
8	577.06	121.66	012°04'47"	61.06	121.44	N89°42'23.5"W
9	25.00	35.42	076°35'33"	19.74	30.99	N45°22'13.5"W
10	25.00	35.42	103°24'27"	31.66	39.24	S44°37'46.5"E
11	25.00	36.29	083°10'32"	22.19	33.19	S42°04'44.0"E
12	398.70	80.53	006°58'39"	24.31	48.52	S02°59'51.5"E
13	458.70	93.40	005°28'14"	21.71	43.36	N03°46'34.0"E
14	25.00	41.57	093°18'03"	27.41	36.94	N48°41'58.5"E
15	637.06	134.32	012°04'47"	67.41	134.06	S89°42'23.5"E
16	25.00	45.58	104°27'28"	32.26	39.52	S43°31'03.0"E
17	25.00	38.17	087°28'29"	23.92	34.57	N52°26'55.5"E
18	25.00	39.27	090°00'00"	25.00	35.36	S38°48'50.0"E

VICINITY MAP



LEGAL DESCRIPTION

THE FOLLOWING DESCRIBED REAL ESTATE BEING DESIGNATED AS GLENWOOD EAST ALLOTMENT II AND SITUATED IN THE STATE OF OHIO, COUNTY OF LOGAN, TOWNSHIPS OF LAKE AND JEFFERSON, BEING PART OF VIRGINIA MILITARY SURVEYS 4478 AND 4399 IN THE CITY OF BELLEFONTAINE AND MORE PARTICULARLY DESCRIBED AS FOLLOWS:

BEGINNING AT A CONCRETE MONUMENT AT THE SOUTHWEST CORNER OF LOT 4566.

THENCE N. 8° 42'41" E. 255.48 FEET TO A CONCRETE MONUMENT AT THE SOUTHEAST CORNER OF LOT 4562.

THENCE N. 84° 04'00" W. 327.06 FEET TO A CONCRETE MONUMENT AT THE SOUTHWEST CORNER OF LOT 4561.

THENCE N. 59° 03' E. 96.72 FEET TO A CONCRETE MONUMENT.

THENCE N. 83° 40'00" W. 14.64 FEET TO A CONCRETE MONUMENT.

THENCE N. 59° 03' E. 193.60 FEET TO A CONCRETE MONUMENT AT THE NORTHWEST CORNER OF LOT 4560.

THENCE S. 83° 40'00" E. 355.42 FEET TO A CONCRETE MONUMENT AT THE NORTHEAST CORNER OF LOT 4558.

THENCE N. 8° 42'41" E. 50.11 FEET TO A CONCRETE MONUMENT AT THE NORTHWEST CORNER OF LOT 4557.

THENCE S. 83° 46'50" E. 313.41 FEET TO A CONCRETE MONUMENT AT THE NORTHEAST CORNER OF LOT 4555.

THENCE S. 63° 11'10" W. 40.00 FEET TO A CONCRETE MONUMENT AT THE NORTHWEST CORNER OF LOT 4554.

THENCE S. 83° 48'50" E. 185.00 FEET TO A CONCRETE MONUMENT.

THENCE S. 63° 11'10" W. 193.24 FEET TO A CONCRETE MONUMENT AT THE NORTHWEST CORNER OF LOT 4553.

THENCE S. 83° 48'50" E. 125.00 FEET TO A CONCRETE MONUMENT AT THE NORTHEAST CORNER OF LOT 4552.

THENCE S. 6° 11'10" W. 545.00 FEET TO A CONCRETE MONUMENT AT THE SOUTHWEST CORNER OF SAID LOT.

THENCE N. 83° 48'50" W. 125.00 FEET TO A CONCRETE MONUMENT AT THE SOUTHWEST CORNER OF SAID LOT.

THENCE N. 6° 11'10" E. 30.54 FEET TO A CONCRETE MONUMENT.

THENCE N. 83° 48'50" W. 60.00 FEET TO A CONCRETE MONUMENT.

THENCE N. 83° 38'47" W. 278.50 FEET TO A CONCRETE MONUMENT.

THENCE N. 83° 17'19" W. 60.00 FEET TO A CONCRETE MONUMENT.

THENCE S. 83° 42'41" W. 28.58 FEET TO A CONCRETE MONUMENT AT THE SOUTHWEST CORNER OF LOT 4566.

THENCE N. 81° 17'19" W. 125.00 FEET TO THE PLACE OF BEGINNING.

STORM RETENTION EASEMENT

THE FOLLOWING DESCRIBED EASEMENT SITUATED IN THE STATE OF OHIO, COUNTY OF LOGAN, TOWNSHIP OF LAKE, BEING PART OF THE VIRGINIA MILITARY SURVEY 4399 IN THE CITY OF BELLEFONTAINE AND MORE PARTICULARLY DESCRIBED AS FOLLOWS:

BEGINNING AT THE NORTHWEST CORNER OF LOT 4557 OF GLENWOOD EAST ALLOTMENT II.

THENCE WITH THE EAST LINE OF THE CITY OF BELLEFONTAINE'S 5.5 ACRE TRACT AS DESCRIBED IN D.B. VOL. 338 PAGE 514 N. 8° 42'41" E. 80.00 FEET TO A POINT.

THENCE S. 83° 48'50" E. 20.0 FEET TO A POINT.

THENCE S. 48° 59'21" E. 140.09 FEET TO A POINT IN THE NORTH LINE OF LOT 1313.

THENCE N. 83° 48'50" W. 135.0 FEET TO THE PLACE OF BEGINNING.

CONTAINING 6200 S.F. OR 0.14 ACRES MORE OR LESS.

RESTRICTIONS AND COVENANTS

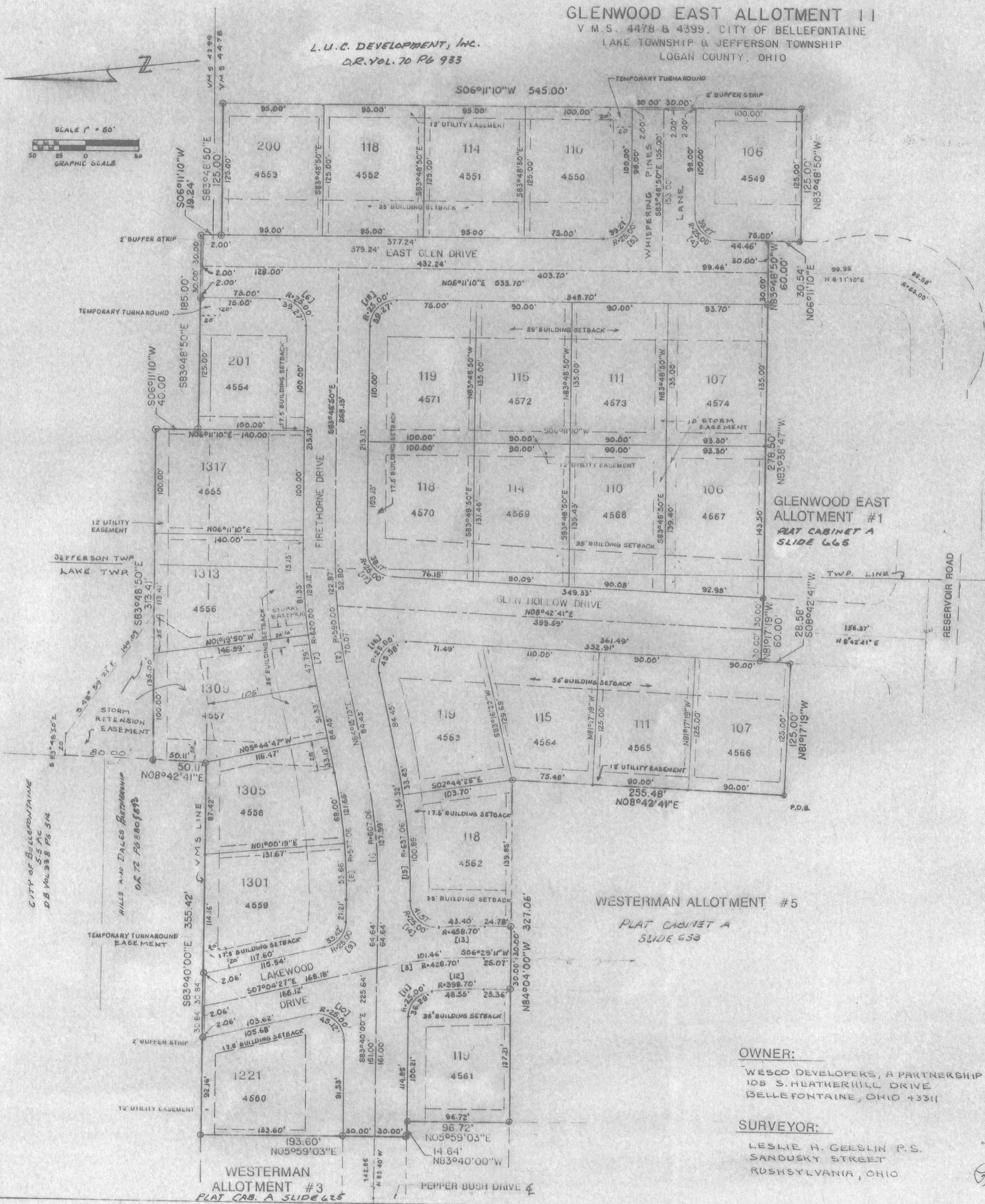
NO BUILDINGS, STRUCTURES AND/OR PLANTINGS SHALL BE LOCATED WITHIN THE LIMITS OF AN EASEMENT.

UTILITY EASEMENTS ARE AS SHOWN - AND 12' ALONG ALL REAR LOT LINES AND 5' ALONG ALL SIDE LOT LINES.

GLENWOOD EAST ALLOTMENT II

V.M.S. 4478 & 4399, CITY OF BELLEFONTAINE
LAKE TOWNSHIP & JEFFERSON TOWNSHIP
LOGAN COUNTY, OHIO

L.U.C. DEVELOPMENT, INC.
D.R. VOL. 70 PG 933



INDICATION

KNOW ALL MEN BY THESE PRESENTS, THAT WESCO DEVELOPERS, A PARTNERSHIP, PROPRIETORS OF THE LAND INDICATED ON THE ACCOMPANYING PLAT, HAVE AUTHORIZED THE PLATTING THEREOF AND DO HEREBY DEDICATE THE STREETS TO THE PUBLIC USE FOREVER.

SAID BUFFER LOT IS DEDICATED CONDITIONALLY UNTIL SUCH TIME AS THE ADJACENT LAND IS SUBDIVIDED AND A PART THEREOF IS DEDICATED FOR THE PURPOSE OF EXTENDING THE PUBLIC RIGHT-OF-WAY HEREBY SHOWN.

Richard E. Westerman
Richard E. Westerman, Partner
Colonial Financial Corporation, Partner

Margaret L. Moffitt
Margaret L. Moffitt, Notary Public

Before me a notary public in and for said county personally came Wesco Developers, a partnership, by Richard E. Westerman and Colonial Financial Corporation by Merrill J. Insley, its President, who acknowledged that he did sign said instrument as such President on behalf of said corporation and by authority of its Board of Directors and that the same is his free act and deed and the free act and deed of said corporation, being all the partners of said partnership, who acknowledged they did sign the foregoing instrument and the same as their free act and deed.

WITNESS my official signature and seal on the day last above mentioned.

Leslie H. Geeslin
Leslie H. Geeslin, Registered Surveyor # 5248
Dated Nov. 13, 1989

SURVEYORS CERTIFICATION

THE ACCOMPANYING PLAT REPRESENTS A SUBDIVISION OF LAND IN BOTH V.M.S. NO. 4478 & 4399, LAKE TOWNSHIP & JEFFERSON TOWNSHIP, LOGAN COUNTY, OHIO.

THE TRACT HAS AN AREA OF 2.66 ACRES IN STREETS AND 7.59 ACRES IN LOTS, MAKING A TOTAL OF 10.45 ACRES.

ALL MEASUREMENTS ARE IN FEET AND DECIMALS OF A FOOT. ALL MEASUREMENTS ON CURVES ARE ARC DISTANCES.

I HEREBY CERTIFY THAT THE ACCOMPANYING PLAT IS A CORRECT REPRESENTATION OF GLENWOOD EAST ALLOTMENT II AS SURVEYED AND THAT ALL MONUMENTS AND IRON PINS AS SHOWN HEREBY HAVE BEEN SET OR WILL BE SET AS A PART OF WORK THAT SURETY IS POSTED FOR.

© Indicates concrete 1/2" x 1/2" monuments * Indicates Iron bars

AREAS BY TOWNSHIP & VMS

	LAKE	JEFFERSON
STREETS	.00	1.557
LOTS	.14	3.120
TOTAL	.14	4.677

DESCRIPTION CHECKED *g.c.h.* 1-9-90

APPROVED THIS 28 DAY OF 12, 1989.

Thomas L. Norrie 12-28-89
Bellefontaine City Engineer

APPROVED THIS 28 DAY OF 12, 1989.

Howard Insley 12-28-89
Bellefontaine City Council

APPROVED THIS 29 DAY OF 12, 1989.

James D. Steels
Chairman City Planning Commission

TRANSFERRED THIS 10th DAY OF JANUARY, 1990.

Joan Janice
Logan County Auditor

RECORDED IN PLAT CABINET A SLIDE 695-B, RECEIVED FOR RECORD AT 2:07 O'CLOCK P.M. THIS DAY 10th OF JANUARY 1990.

Carolyn Collins
Recorder, Logan County, Ohio

THE WITHIN STREETS AND IMPROVEMENTS ARE HEREBY APPROVED AND ACCEPTED FOR PUBLIC MAINTENANCE BY ORDINANCE NO. 89-107, RECORDED IN CITY COUNCIL'S RECORD BOOK # 89 ON THIS 25th DAY December, 1989.

Richard S. Vitore
Mayor

Adeltha Padmore
Bellefontaine City Council