






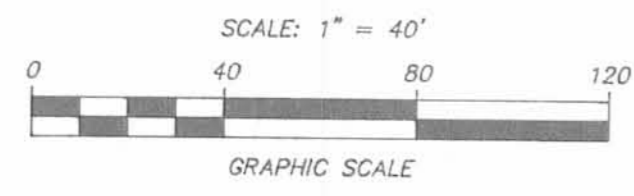


Whispering Pines No. 1
P.C. "A", Slide 681, 682 & 683

-  Limited Common Area
 -  All areas & improvements not labeled with a Unit Designation or as Limited Common Area are Common Areas.
 -  Indicates Concrete Monument Found
 -  Indicates 3/4" I.D. Iron Pipe Set
 -  Indicates Building Number
 -  Indicates Unit Designation
 -  Indicates 3-Bedroom Unit. All other Units are 2-Bedroom.
- Patio dimensions are shown on First Floor Plan.



Basis of Bearings is bearing between Lots Nos. 4640 & 4641 at S 1° 17' 23" E, as per the plat of Whispering Pines No. 1, Plat Cabinet "A", Slide 681, 682 & 683.

THE ADDITIONAL PROPERTY
4.084 AC.

THE CONDOMINIUM PROPERTY
2.204 AC.
(East Portion)

THE CONDOMINIUM PROPERTY
1.445 AC.
(West Portion)

State of Ohio
 15 AC.
 D.B. 276, Pg. 506
 N 86° 16' 56" E 173.63'
 25' Building Line
 389.58'
 N 86° 13' 50" E
 Marvin & Nancy Rathfelder
 24.17 AC.
 D.B. 395, Pg. 218

12' Easement
P.C. "A", Pgs. 681-683

TRUE PLACE OF BEGINNING FOR 4.084 AC. DESCRIPTION

6' Easement
P.C. "A", Pgs. 681-683

PLACE OF BEGINNING FOR 1.445 AC. DESCRIPTION & REFERENCE POINT OF BEGINNING FOR 2.204 AC. DESCRIPTION & 4.084 AC. DESCRIPTION

NOTE:
Drives, walks, patios, exterior improvements & interior finish work NOT YET COMPLETED as of November 15, 1989.

Transferred this 16th day of MARCH, 1990

Jan Jones
Logan County Auditor

Approved by The Bellefontaine Planning Commission
this 16th day of March, 1990

Jonathan L. Noss
Clerk, Planning Commission

Recorded in Plat Cabinet A, Slides 703-A thru 711-A

Received for record at 2:55 o'clock P.M.
this 16th day of MARCH, 1990

Carolyn Collins
Logan County Recorder

Description Check *Jan* 3-16-90

LUC Development, Inc.
57.705 Ac.
O.R. 70, Pg. 933

Surveyed and Platted By
C.F. BIRD & R.J. BULL, INC.
Consulting Engineers & Surveyors
2875 W. Dublin-Granville Road
Worthington, Ohio 43235

We do hereby certify that these drawings of HUNTERS' RIDGE CONDOMINIUM show all buildings as constructed.



By *Richard J. Bull*
Richard J. Bull
Registered Surveyor
Ohio No. 4723

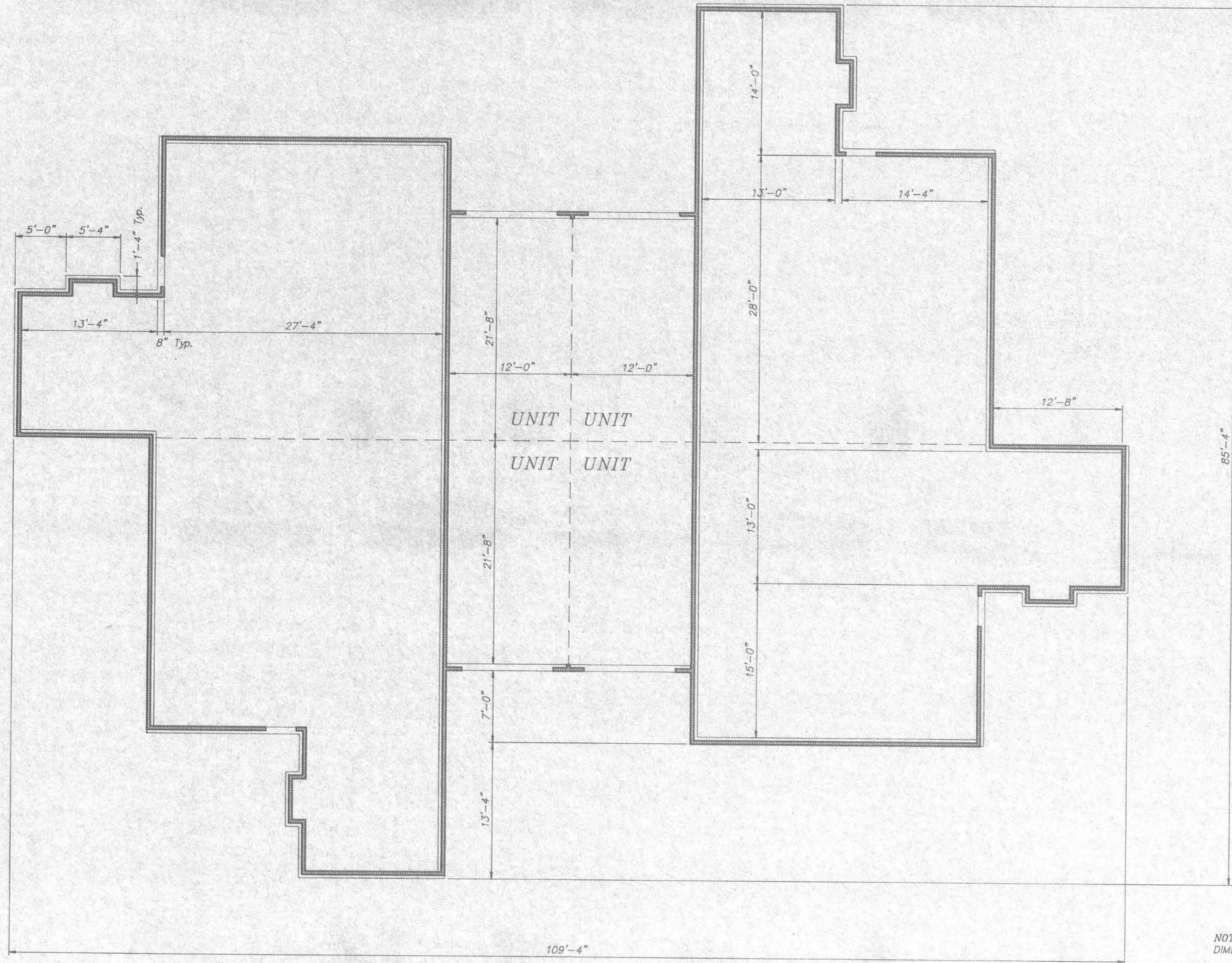


By *Richard J. Bull*
Richard J. Bull
Registered Engineer
Ohio No. 24166

CONDOMINIUM DRAWINGS
for
HUNTERS' RIDGE
CONDOMINIUM
BELLEFONTAINE, OHIO
(JEFFERSON TOWNSHIP)
PLOT PLAN

PART LOT 4641
WHISPERING PINES NO.1
P.C. "A", SLIDE 681, 682 & 683

Revised: Mar. 12, 1990
Revised: Feb. 14, 1990
SHEET No. 1 of 9



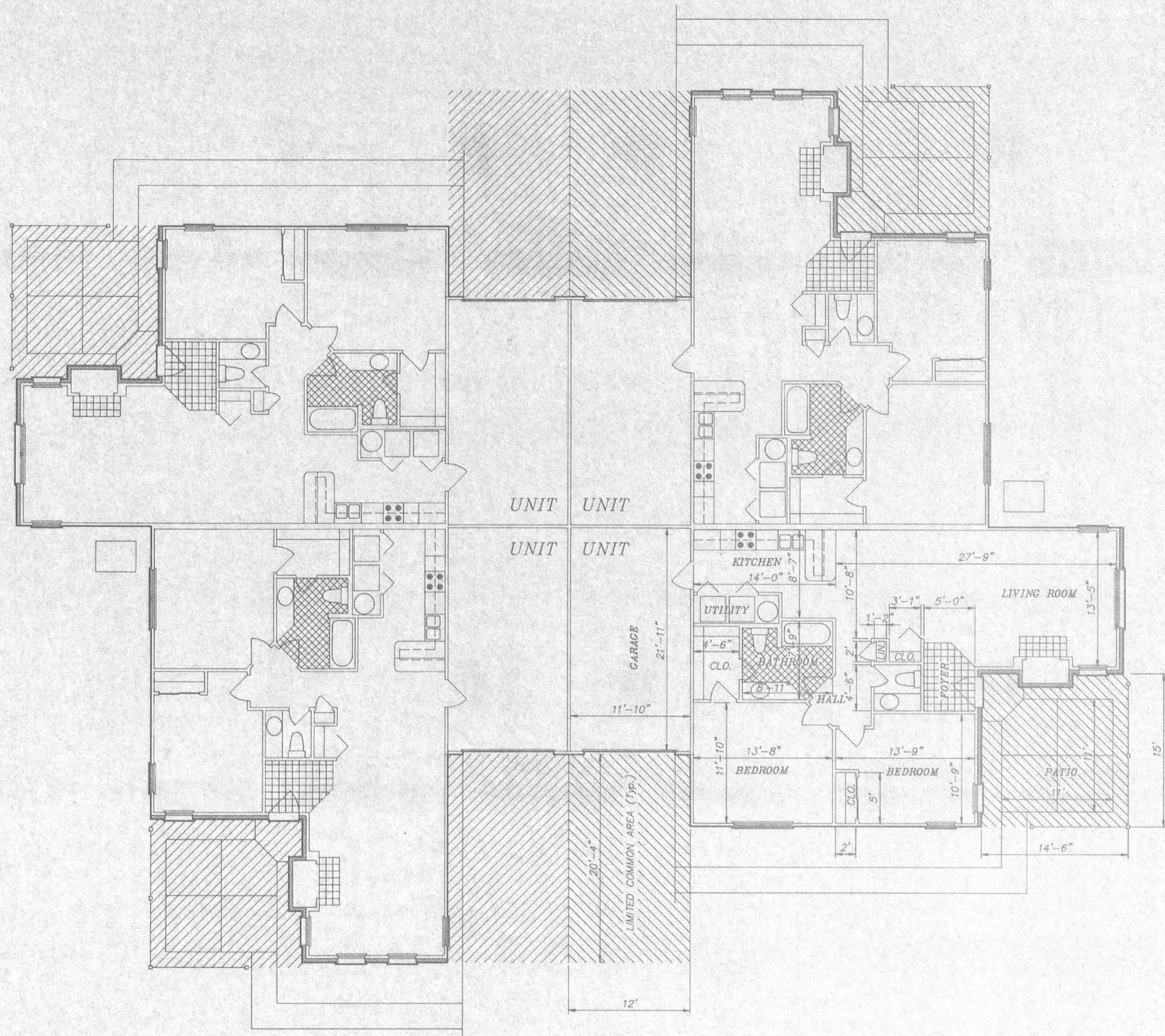
NOTE:
DIMENSIONS TYPICAL FOR ALL UNITS.

FOUNDATION PLAN

SCALE: 1/8" = 1'-0"

CONDOMINIUM DRAWINGS
for
HUNTERS' RIDGE
CONDOMINIUM

BUILDING Nos. 1, 2, 3, 7, 8 & 10
BUILDING No. 9 (OPPOSITE HAND)



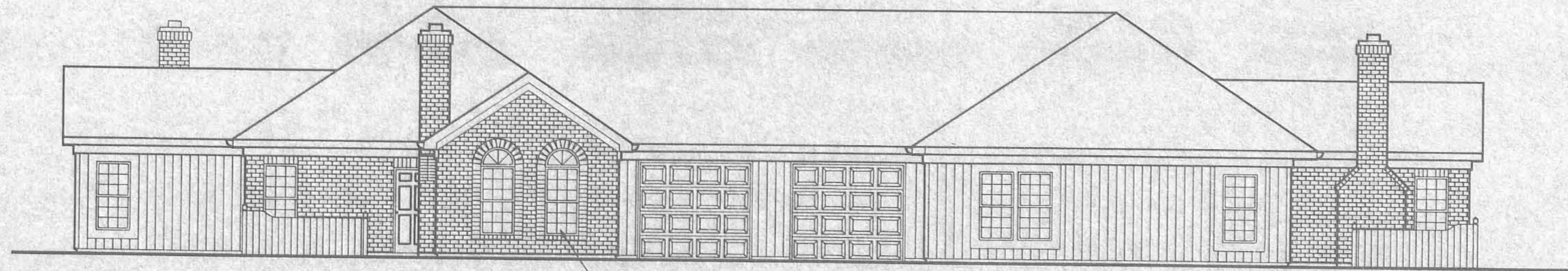
NOTE:
DIMENSIONS TYPICAL FOR ALL UNITS.

FIRST FLOOR PLAN

SCALE: 1/8" = 1'-0"

CONDOMINIUM DRAWINGS
for
HUNTERS' RIDGE
CONDOMINIUM

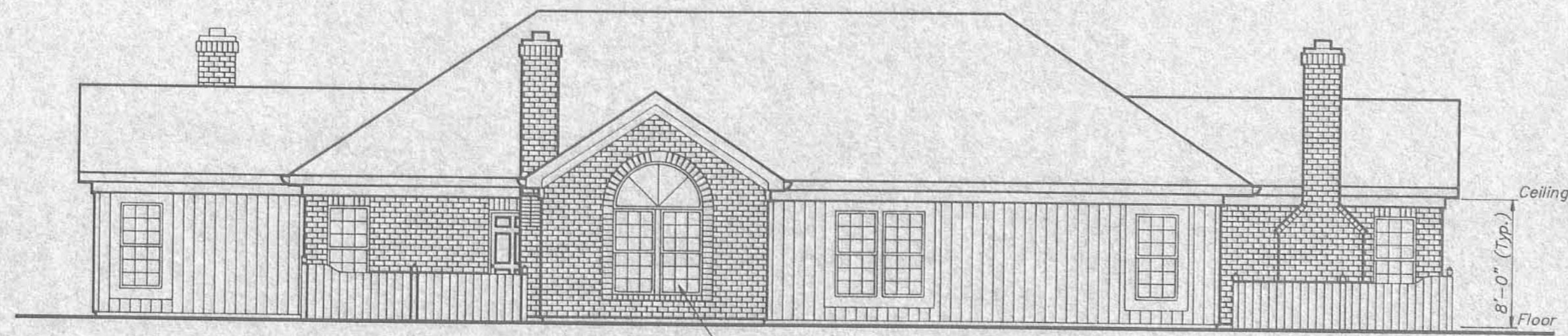
BUILDING Nos. 1, 2, 3, 7 & 10
BUILDING No. 9 (OPPOSITE HAND)



ALTERNATE WINDOW STYLE SHOWN BELOW.

FRONT & REAR ELEVATION

SCALE: 1/8" = 1'-0"



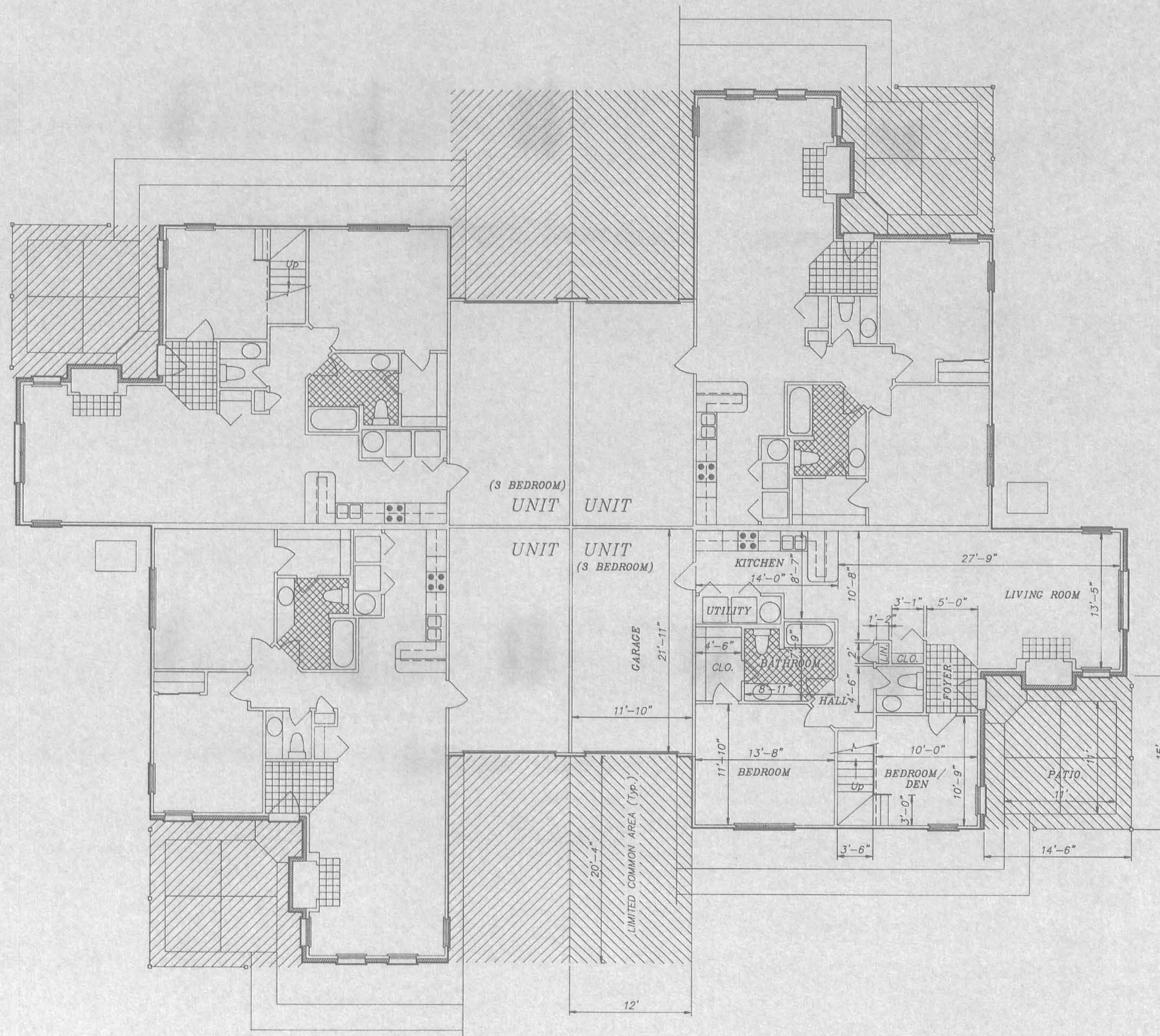
ALTERNATE WINDOW STYLE SHOWN ABOVE.

RIGHT & LEFT SIDE ELEVATION

SCALE: 1/8" = 1'-0"

NOTE:
DIMENSIONS TYPICAL FOR ALL UNITS.

CONDOMINIUM DRAWINGS
for
HUNTERS' RIDGE
CONDOMINIUM
ELEVATIONS
BUILDING Nos. 1, 2, 3, 7 & 10
BUILDING No. 9 (OPPOSITE HAND)



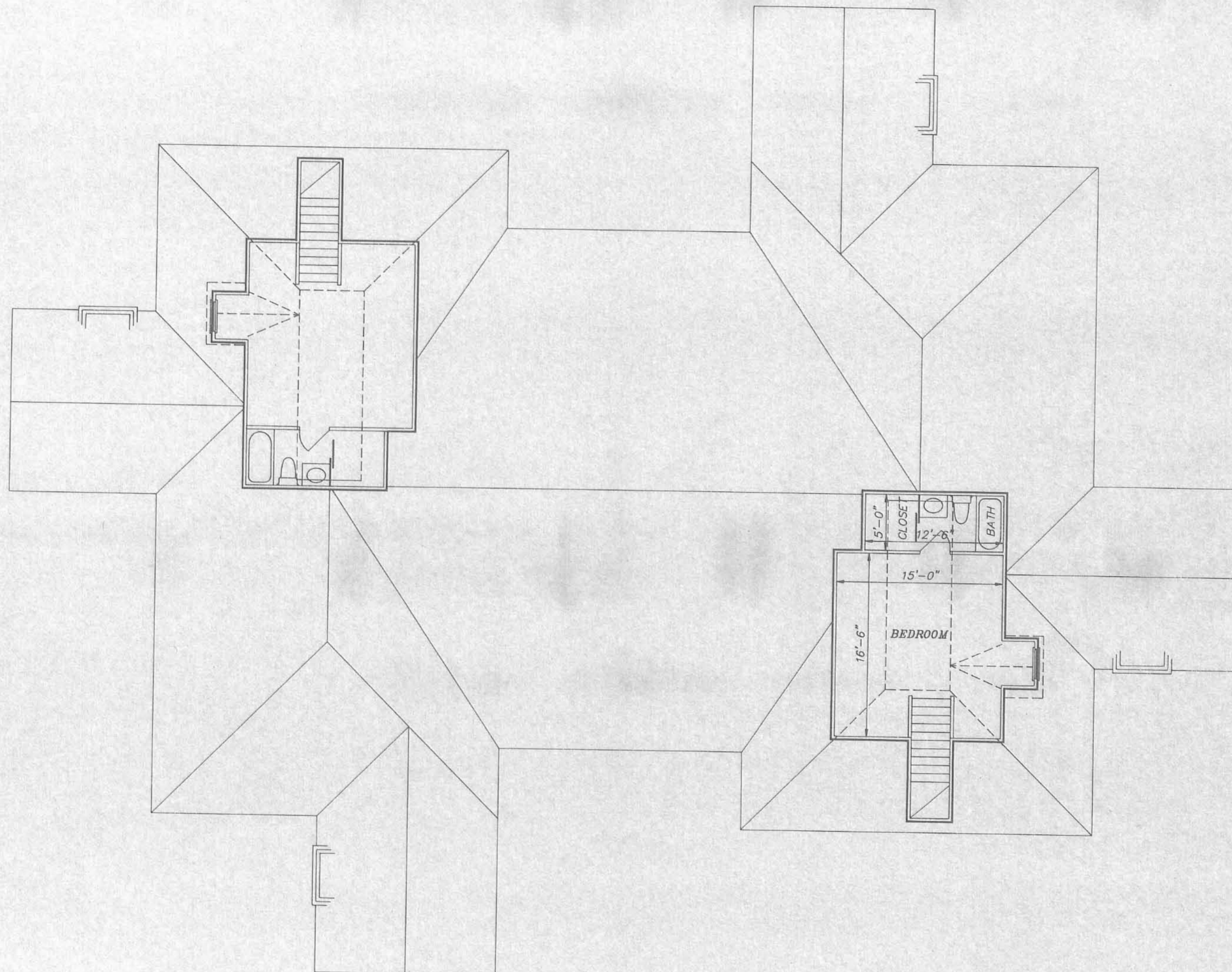
NOTE:
 DIMENSIONS TYPICAL FOR 3-BEDROOM UNITS.
 (Units 228, 230).
 DIMENSIONS FOR OTHER UNITS ARE SHOWN ON
 SHEET No. 3.

FIRST FLOOR PLAN

SCALE: 1/8" = 1'-0"

CONDOMINIUM DRAWINGS
 for
 HUNTERS' RIDGE
 CONDOMINIUM

BUILDING No. 8



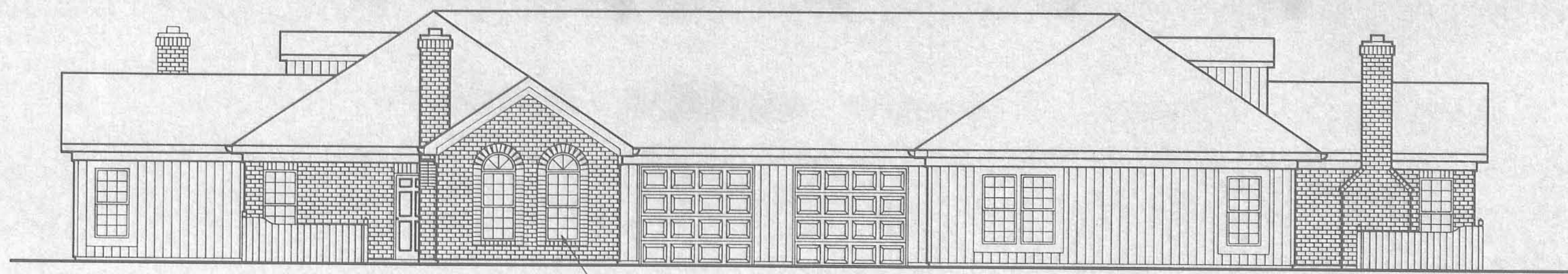
SECOND FLOOR PLAN

SCALE: 1/8" = 1'-0"

NOTE:
DIMENSIONS TYPICAL FOR 3-BEDROOM UNITS ONLY.
(Units 228, 230).

CONDOMINIUM DRAWINGS
for
HUNTERS' RIDGE
CONDOMINIUM

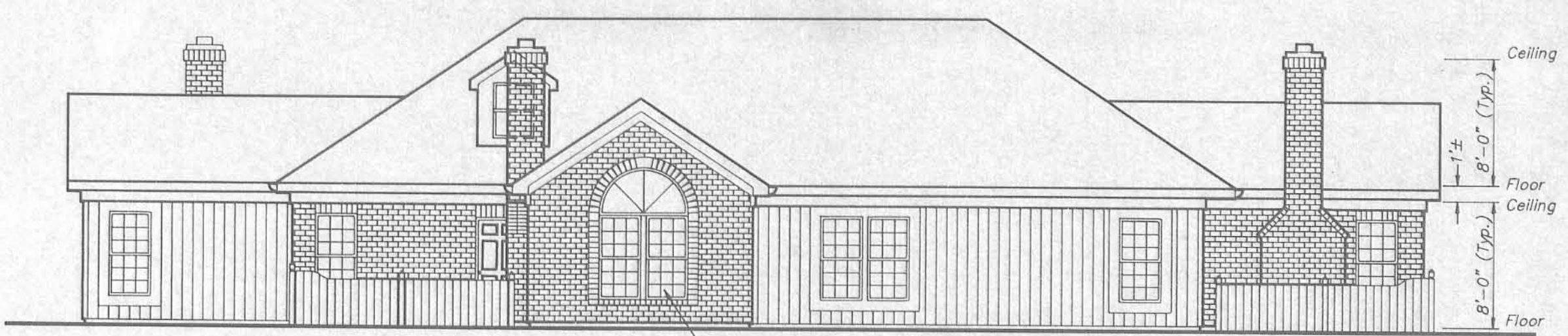
BUILDING No. 8



ALTERNATE WINDOW STYLE SHOWN BELOW.

FRONT & REAR ELEVATION

SCALE: 1/8" = 1'-0"



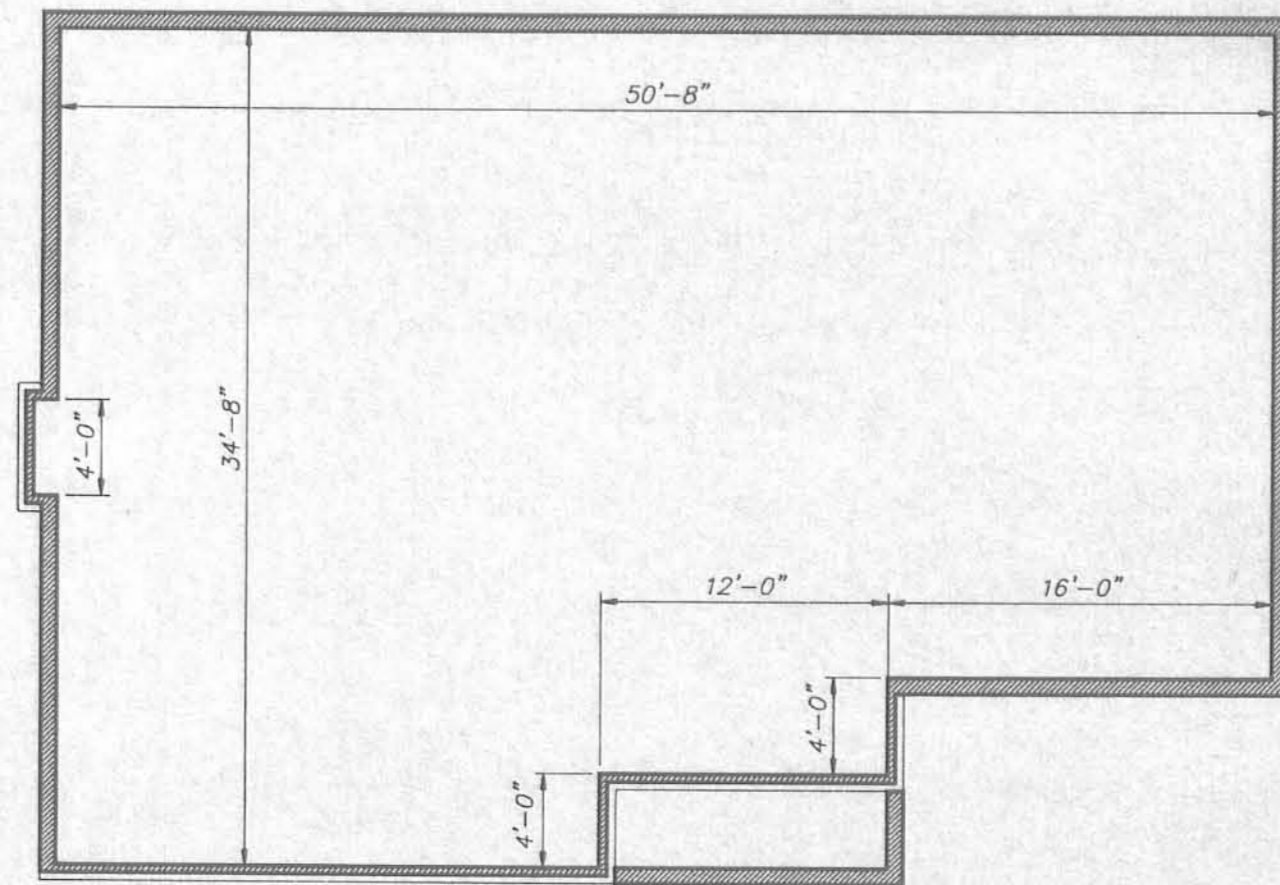
ALTERNATE WINDOW STYLE SHOWN ABOVE.

RIGHT & LEFT SIDE ELEVATION

SCALE: 1/8" = 1'-0"

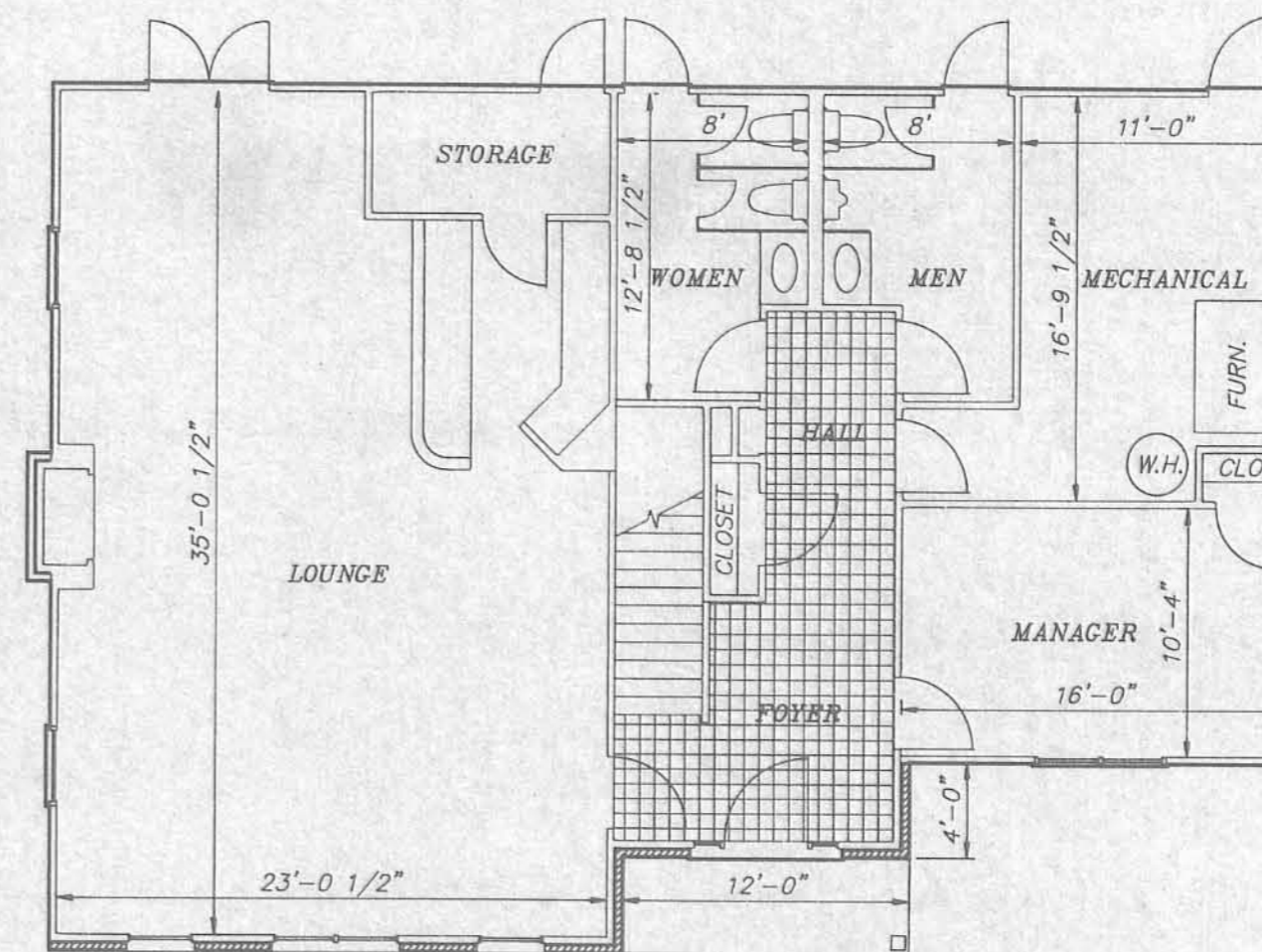
NOTE:
DIMENSIONS TYPICAL FOR ALL UNITS.

CONDOMINIUM DRAWINGS
for
HUNTERS' RIDGE
CONDOMINIUM
ELEVATIONS
BUILDING No. 8



FOUNDATION PLAN

SCALE: 1/8" = 1'-0"



FIRST FLOOR PLAN

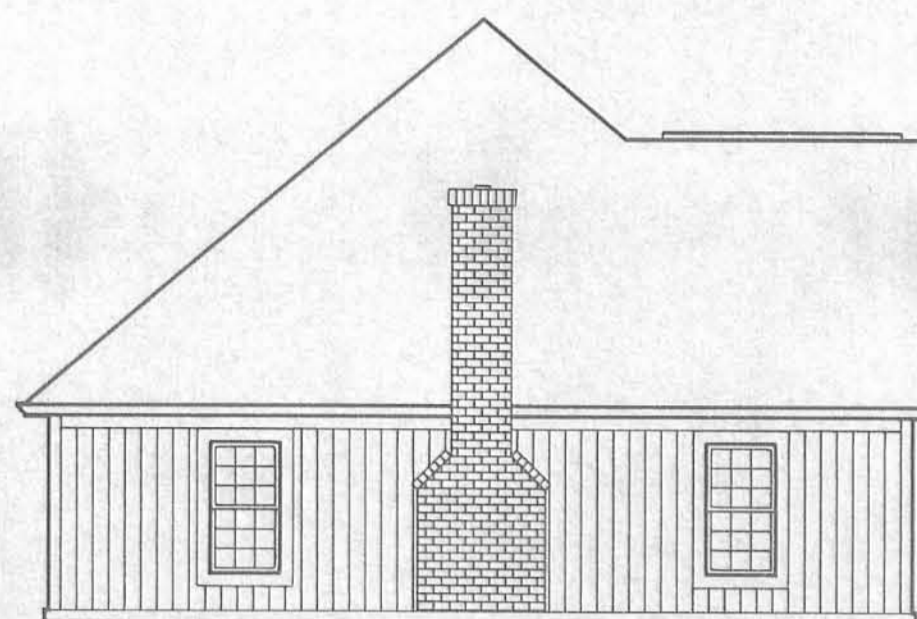
SCALE: 1/8" = 1'-0"

CONDOMINIUM DRAWINGS
 for
 HUNTERS' RIDGE
 CONDOMINIUM
 CLUBHOUSE
 FOUNDATION & FIRST FLOOR PLAN



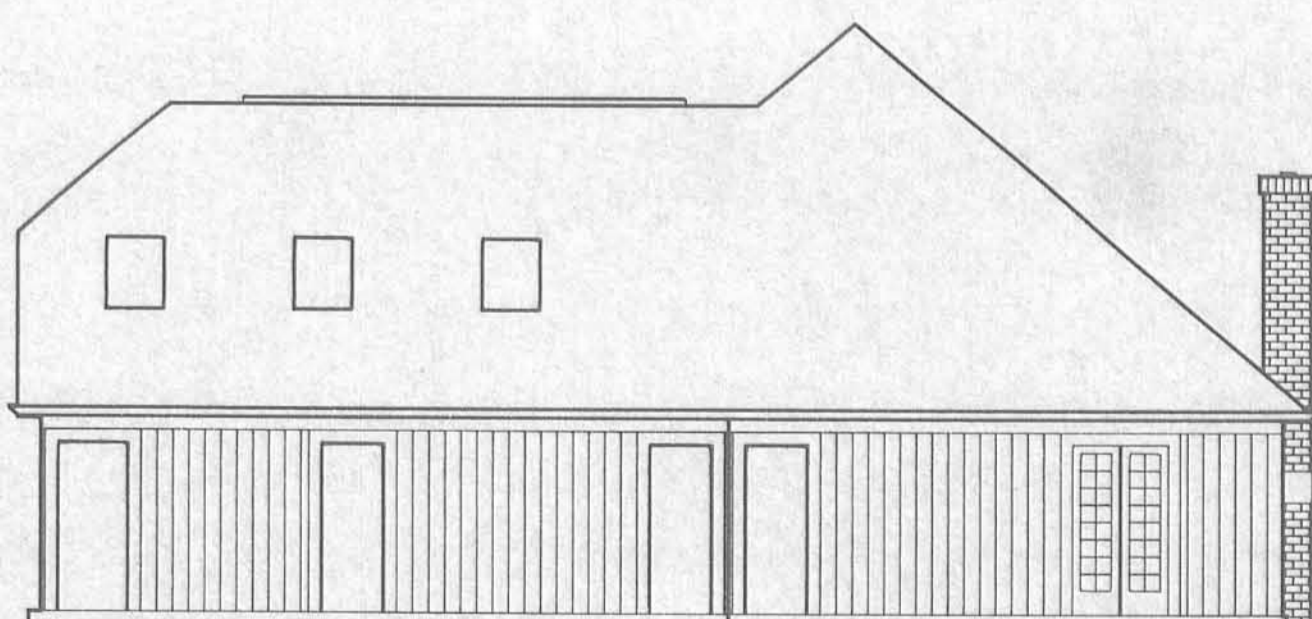
FRONT ELEVATION

SCALE: 1/8" = 1'-0"



LEFT ELEVATION

SCALE: 1/8" = 1'-0"



REAR ELEVATION

SCALE: 1/8" = 1'-0"



RIGHT ELEVATION

SCALE: 1/8" = 1'-0"

CONDOMINIUM DRAWINGS
for
HUNTERS' RIDGE
CONDOMINIUM

CLUBHOUSE
ELEVATIONS