

CARTER STEEL AND FABRICATING CO.
14.356 ACRES
O.R. 81, PG. 87 (TRACT 1)



7.547 ACRES
ADDITIONAL PROPERTY

PART OF THE
S. J. WAMMES DEVELOPMENT CO., INC.
ORIGINAL 9.98 ACRES
OFFICIAL RECORD 207, PAGE 506

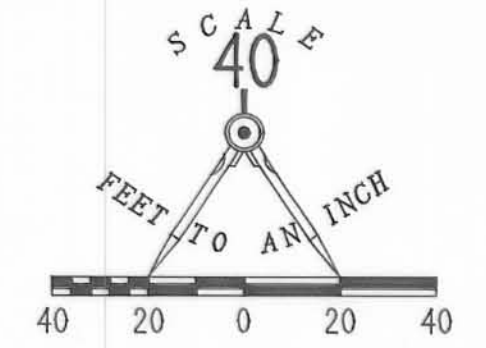
1.544 ACRE PART OF THE
S. J. WAMMES DEVELOPMENT CO., INC.
ORIGINAL 9.98 ACRES
OFFICIAL RECORD 207, PAGE 506
NOT A PART OF THIS PLAT

INDEPENDENCE VILLAGE, LTD.
6.000 ACRES
O.R. 25, PG. 793

DP & L 5.0' WIDE EASEMENT
VOL. 353, PG. 795

DP & L 5.0' WIDE EASEMENT
VOL. 353, PG. 589

2 WORKING DAYS
BEFORE YOU DIG
CALL TOLL FREE 800-362-2764
OHIO UTILITIES PROTECTION SERVICE.



- LEGEND:
- 5/8" IRON ROD SET
 - 5/8" IRON ROD FOUND
 - 5/8" IRON PIPE FOUND
 - 1/2" IRON ROD FOUND
 - P.K. NAIL FOUND

54 UNIT NUMBER
(1545) STREET ADDRESS

- LIMITED COMMON AREA
- ALL AREAS AND IMPROVEMENTS NOT LABELED WITH A UNIT DESIGNATION OR AS LIMITED COMMON AREA ARE COMMON AREA.

CURVE	DELTA ANGLE	RADIUS	ARC	TANGENT	CHORD	CHORD BEARING
C 1	07°08'14"	1947.52'	242.60'	121.46	242.44'	S 19°31'36"W
C 5	07°53'40"	400.00'	55.11'	27.60'	55.07'	S 00°04'25"E
C 6	07°00'06"	385.00'	47.05'	23.55'	47.02'	S 00°31'12"E

NOTE: ALL RESIDENCE UNITS ARE SEPARATED BY A DISTANCE OF 12.0 FEET BETWEEN THE FOUNDATION WALLS UNLESS OTHERWISE NOTED ON THIS PLAN.
UNITS 2, 18, 19, AND 20 ARE NOT YET COMPLETED, AS OF AUGUST 22, 1994.

CONDOMINIUM DRAWINGS FOR
PHASE I - 0.857 ACRE
IRON CITY ESTATES CONDOMINIUM
SECTION 33, TOWN 4, RANGE 14
CITY OF BELLEFONTAINE
LAKE TOWNSHIP
LOGAN COUNTY, OHIO
PLOT PLAN

PART OF THE
S. J. WAMMES DEVELOPMENT CO., INC.
ORIGINAL 9.98 ACRES
OFFICIAL RECORD 207, PAGE 506

APPROVED BY THE BELLEFONTAINE PLANNING COMMISSION
THIS 28th DAY OF September, 1994.

F. L. Norris
CLERK, PLANNING COMMISSION

DESCRIPTION CHECKED *Jon C. J...* 9-30-94

TRANSFERRED THIS 3rd DAY OF October, 1994.

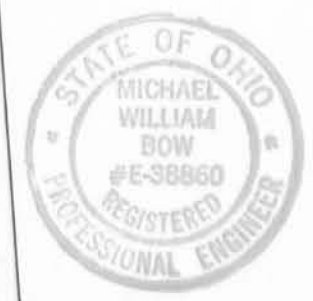
Jean Jones
LOGAN COUNTY AUDITOR

RECORDED IN PLAT CABINET A, SLIDE 789-B; 794-A; 794-B
RECEIVED FOR RECORD AT 2:12:01 O'CLOCK P.M.

THIS 3rd DAY OF October, 1994.

Carolyn Collins
LOGAN COUNTY RECORDER

WE DO HEREBY STATE THAT THESE DRAWINGS OF IRON CITY ESTATES CONDOMINIUM SHOW ALL BUILDINGS AS CONSTRUCTED.



Michael W. Bow
MICHAEL W. BOW
PROFESSIONAL ENGINEER 38860
DECEMBER 20, 1993

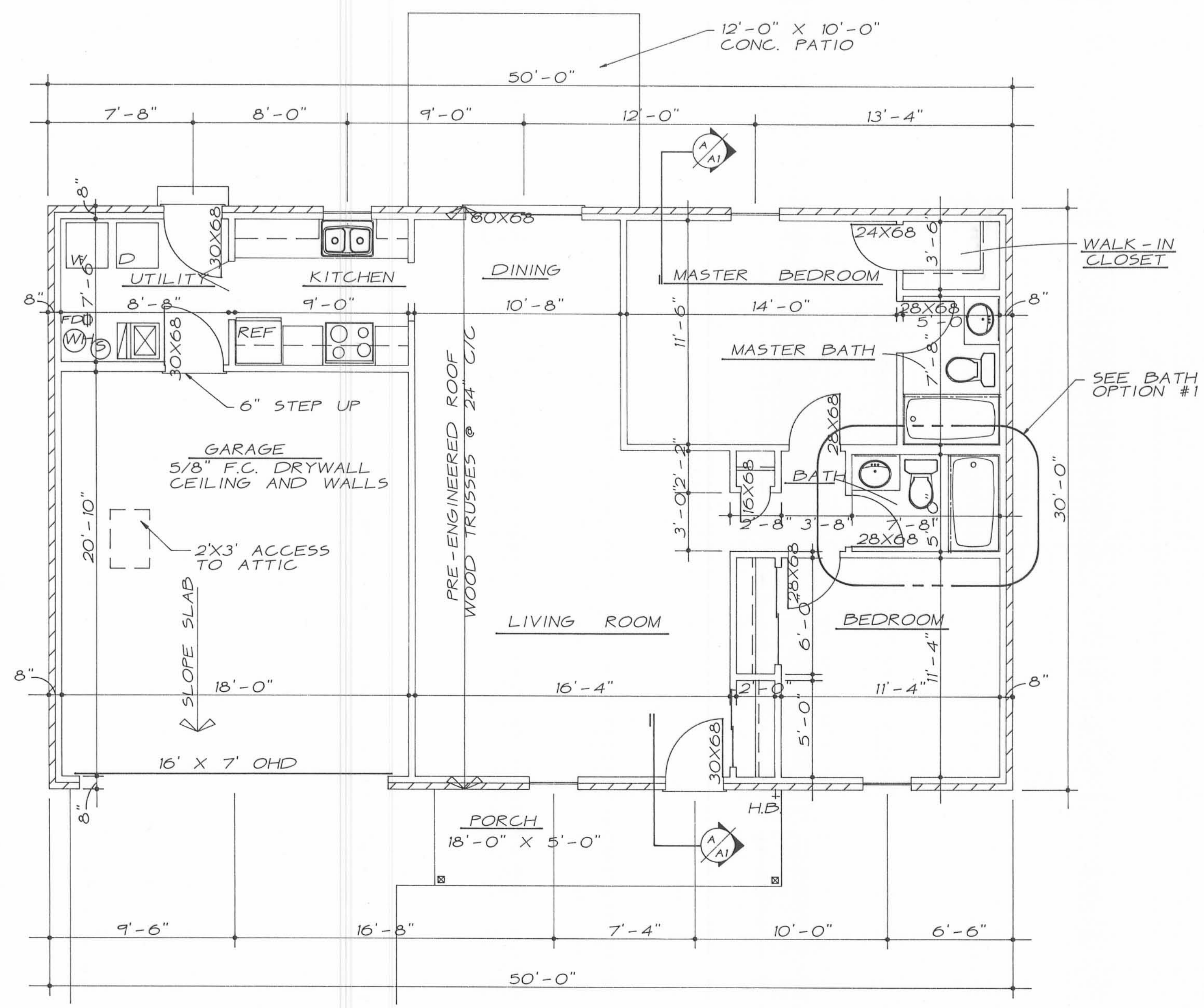
THE M & K ENGINEERING CO.
1691 T.R. 31 North
BELLEFONTAINE, OHIO 43311
(513) 592-2697

Jeffrey I. Lee
JEFFREY I. LEE
PROFESSIONAL SURVEYOR 6359
DECEMBER 20, 1993

LEE SURVEYING & MAPPING CO.
143 East Columbus Avenue
BELLEFONTAINE, OHIO 43311
(513) 593-7335

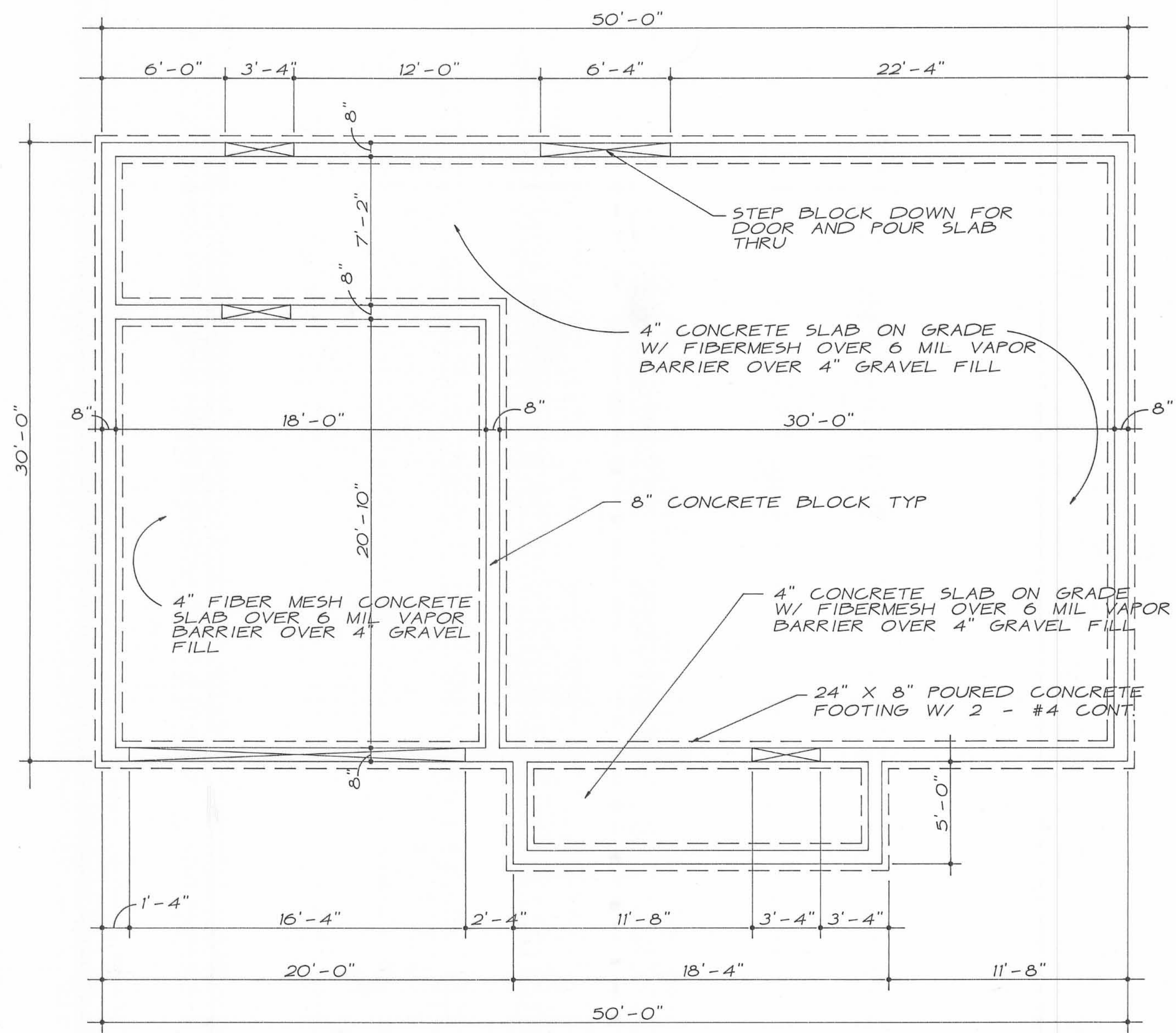


CLARKSON



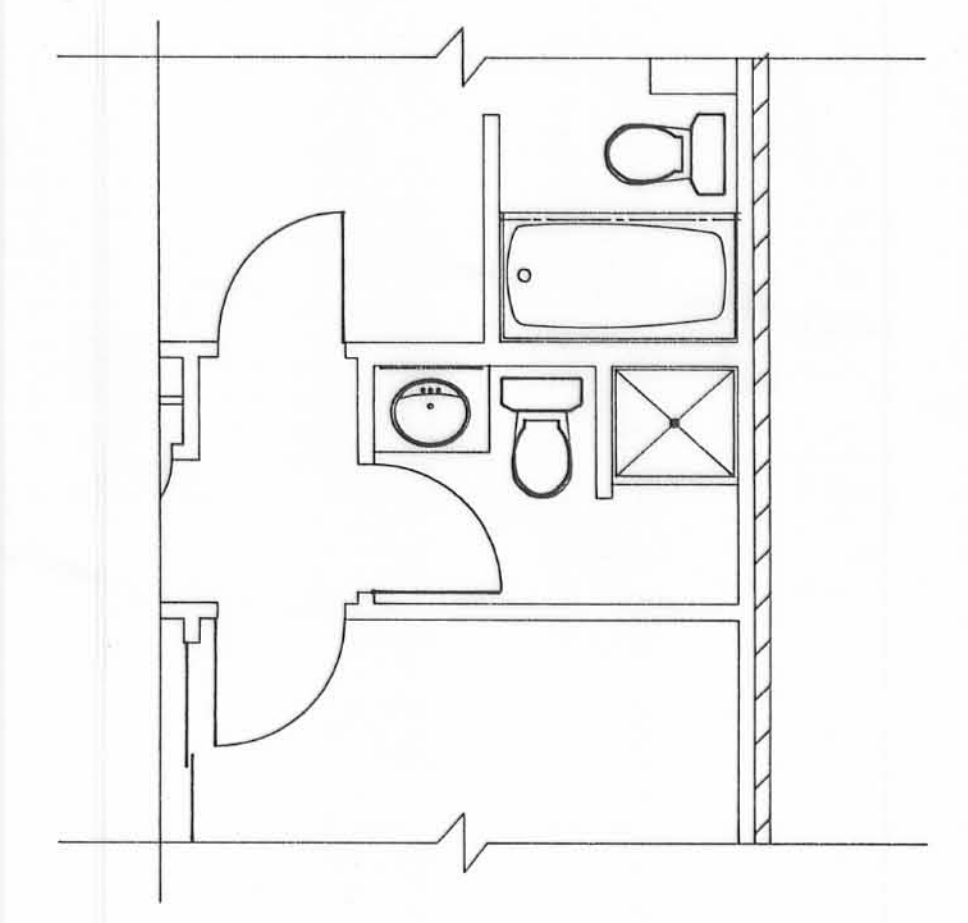
FLOOR PLAN

SCALE · 1/4" = 1'-0"



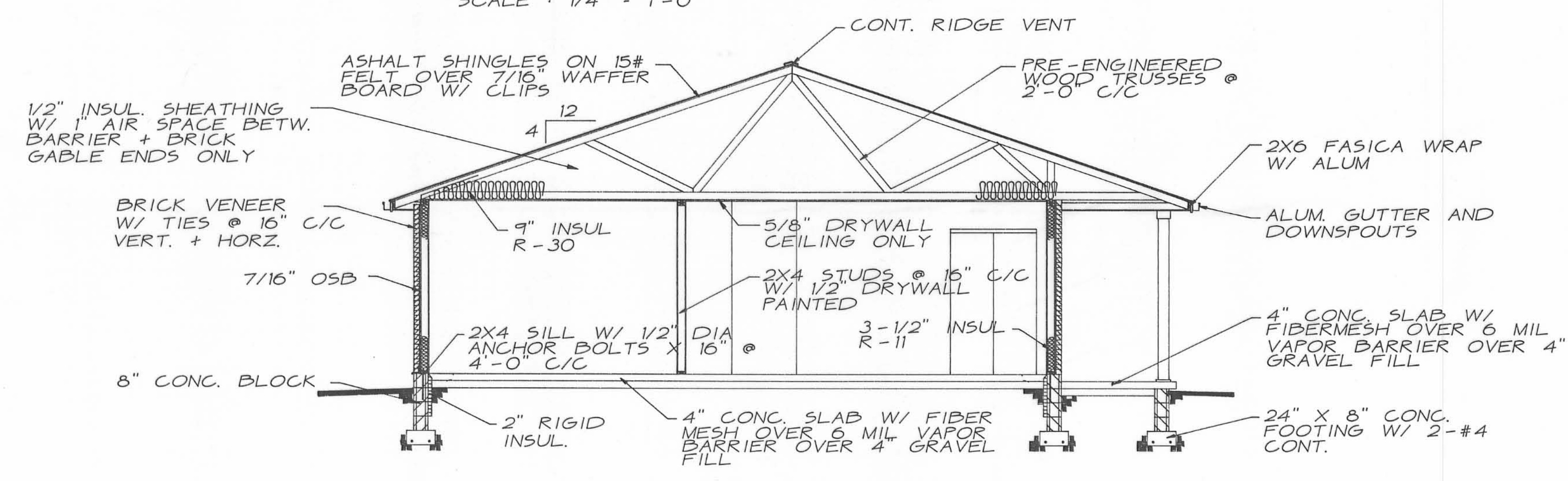
FOUNDATION PLAN

SCALE · 1/4" = 1'-0"



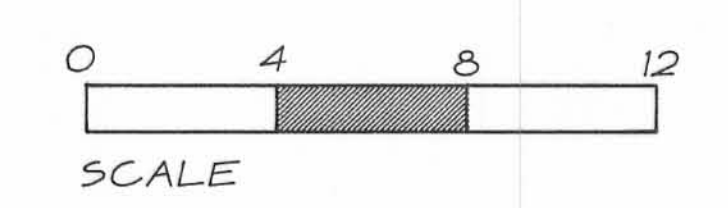
SHOWER OPTION #1

SCALE · 1/4" = 1'-0"



SECTION A-A

SCALE · 1/4" = 1'-0"



ARCHITECTURAL STRUCTURES ASSOCIATED
ARCHITECTS • ENGINEERS • PLANNERS

P.O. BOX 185
URBANA, OHIO 43078
(513) 652-1628

P.O. BOX 261
PIQUA, OHIO 45356
(513) 773-9452

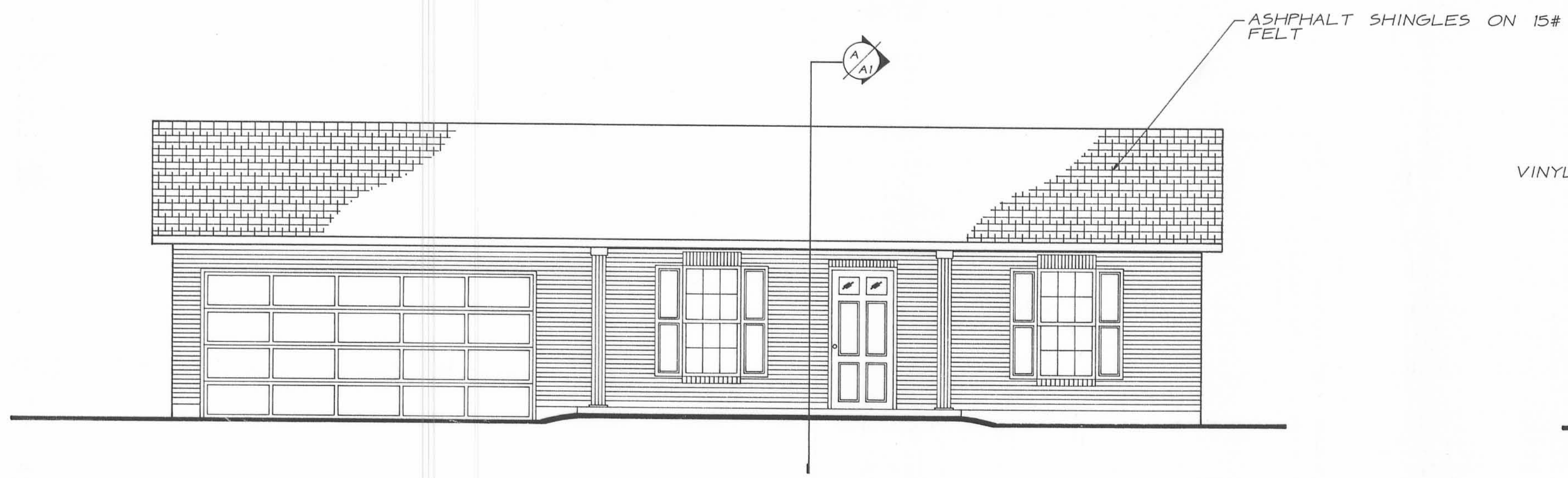
PROJECT NO. 92195

REVISED	DATE	BY
1	8-21-94	

IRON CITY ESTATES
SPEC HOUSE

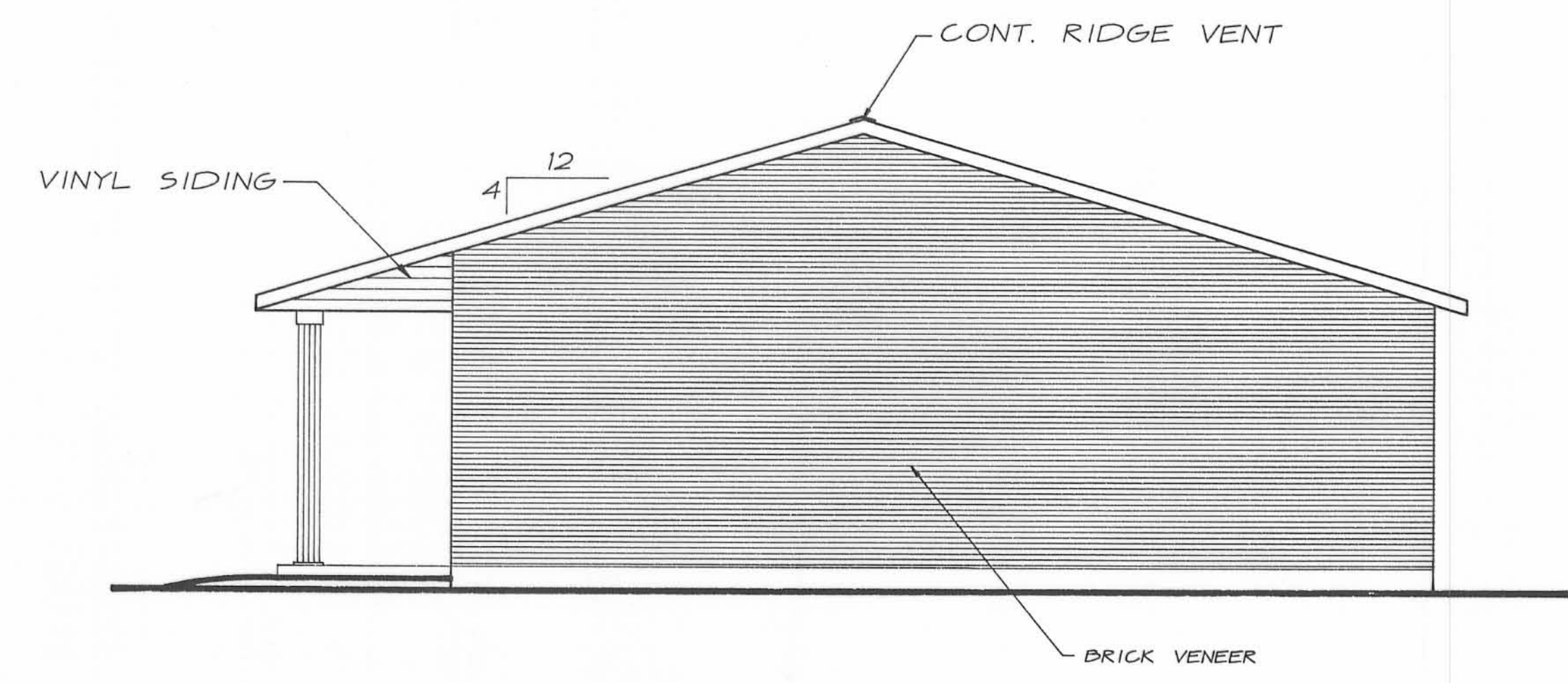
DATE 9-26-93

A-1



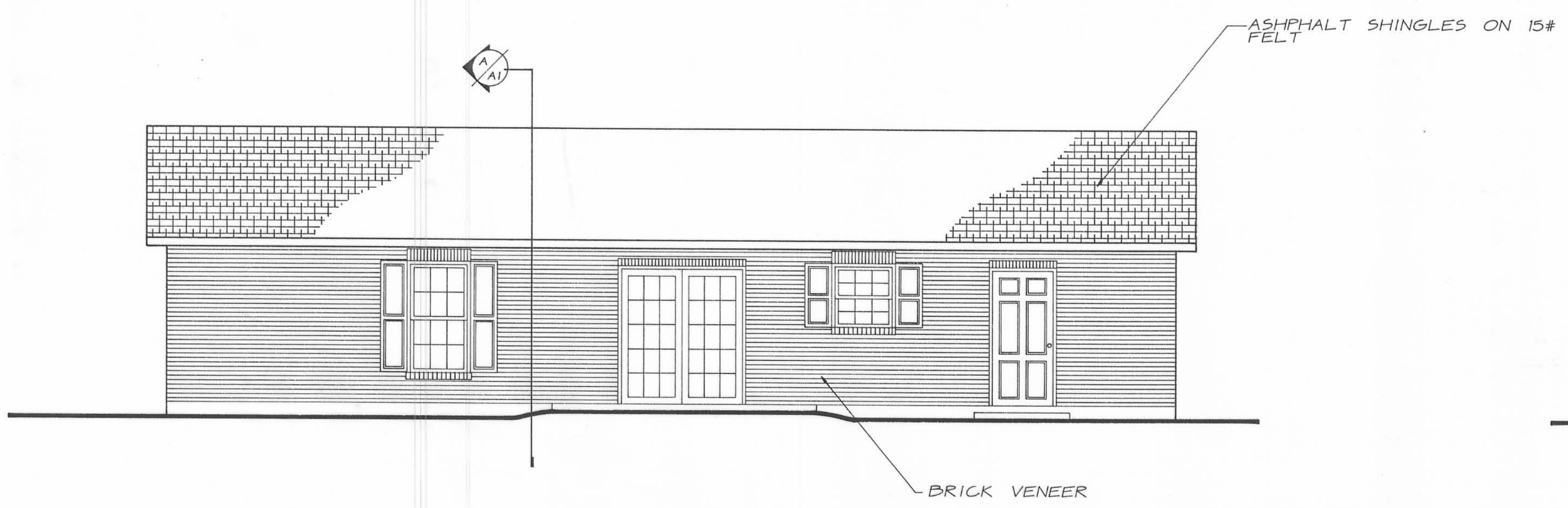
FRONT ELEVATION

SCALE · 1/4" = 1'-0"



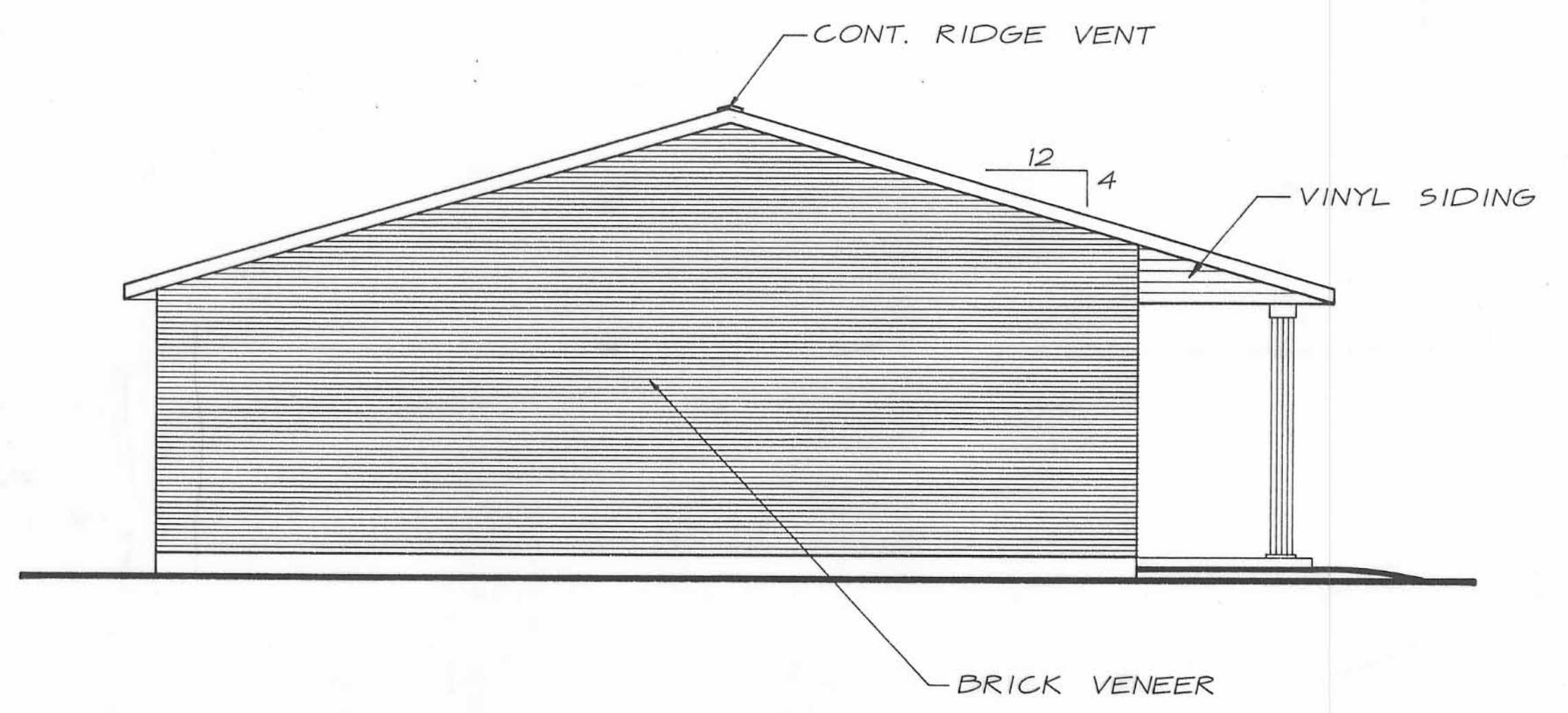
RIGHT SIDE ELEVATION

SCALE · 1/4" = 1'-0"



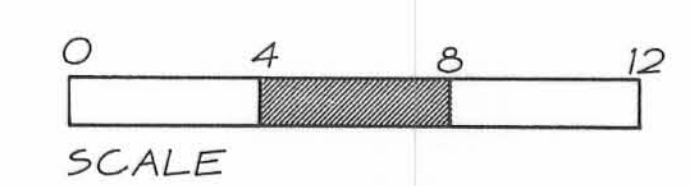
BACK ELEVATION

SCALE · 1/4" = 1'-0"



LEFT SIDE ELEVATION

SCALE · 1/4" = 1'-0"



ARCHITECTURAL STRUCTURES ASSOCIATED
ARCHITECTS • ENGINEERS • PLANNERS

P.O. BOX 261
PICUA, OHIO 45356
(513) 773-9452

P.O. BOX 185
URBANA, OHIO 43078
(513) 652-1628

PROJECT NO.	92195
DRAWING TYPE	FLOOR - DWG
REVISIONS	REVISED 8-21-94
	1

IRON CITY ESTATES
SPEC HOUSE

DATE 9-26-93

A-2