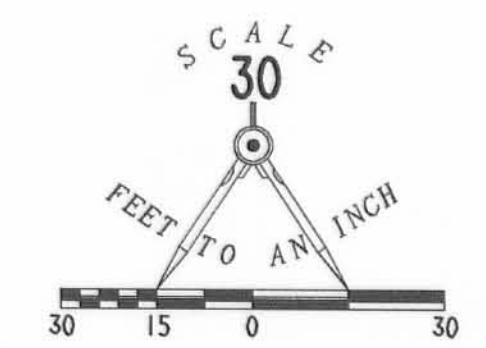
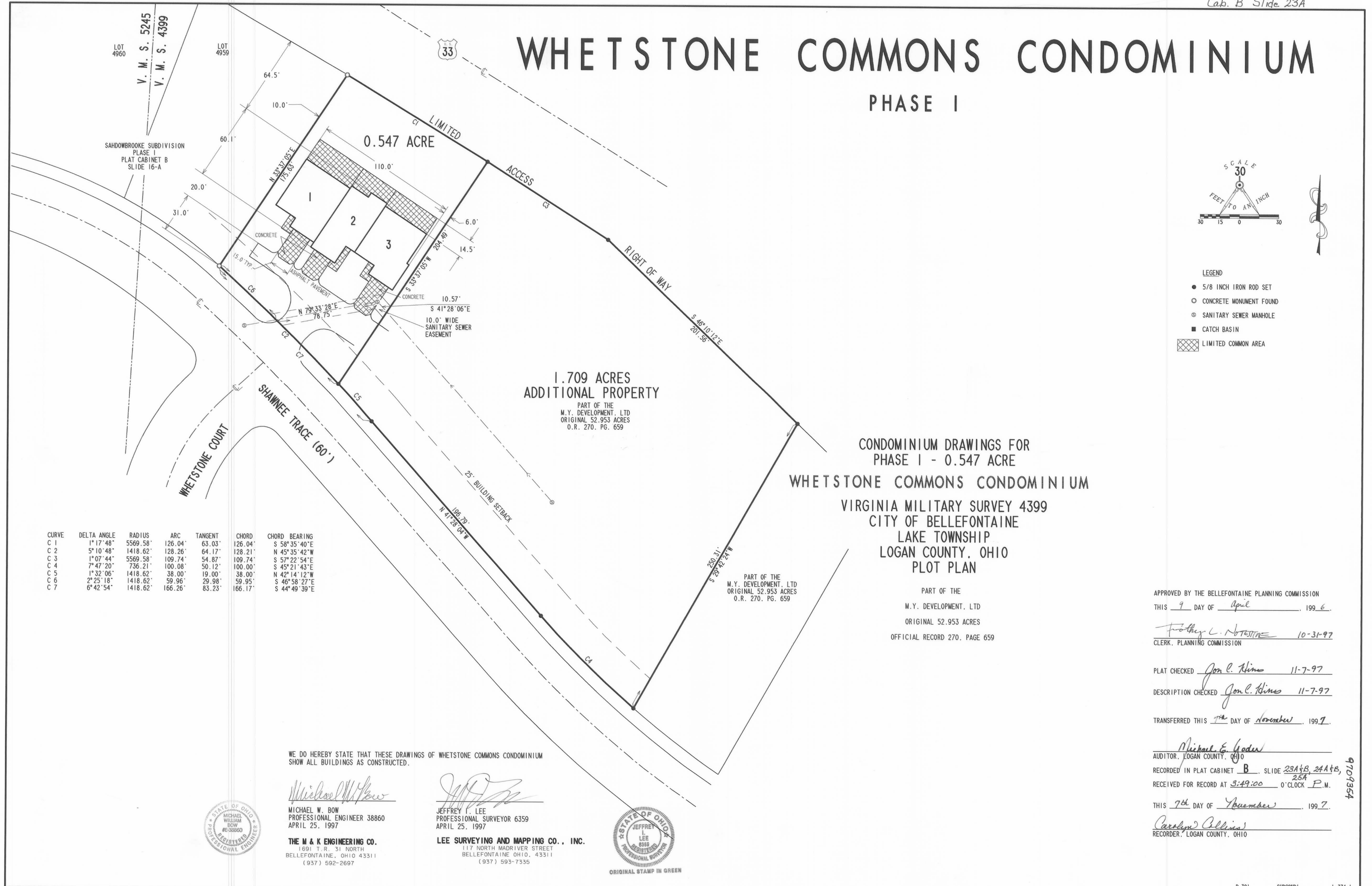


# WHETSTONE COMMONS CONDOMINIUM

## PHASE I



- LEGEND**
- 5/8 INCH IRON ROD SET
  - CONCRETE MONUMENT FOUND
  - ⊙ SANITARY SEWER MANHOLE
  - CATCH BASIN
  - ▨ LIMITED COMMON AREA

1.709 ACRES  
ADDITIONAL PROPERTY  
PART OF THE  
M.Y. DEVELOPMENT, LTD  
ORIGINAL 52.953 ACRES  
O.R. 270, PG. 659

CONDOMINIUM DRAWINGS FOR  
PHASE I - 0.547 ACRE  
WHETSTONE COMMONS CONDOMINIUM  
VIRGINIA MILITARY SURVEY 4399  
CITY OF BELLEFONTAINE  
LAKE TOWNSHIP  
LOGAN COUNTY, OHIO  
PLOT PLAN

PART OF THE  
M.Y. DEVELOPMENT, LTD  
ORIGINAL 52.953 ACRES  
OFFICIAL RECORD 270, PAGE 659

APPROVED BY THE BELLEFONTAINE PLANNING COMMISSION  
THIS 9 DAY OF April, 1997.  
*Forthy L. Notstine* 10-31-97  
CLERK, PLANNING COMMISSION

PLAT CHECKED *Jon C. Hines* 11-7-97  
DESCRIPTION CHECKED *Jon C. Hines* 11-7-97  
TRANSFERRED THIS 7th DAY OF November, 1997.

*Michael E. Goden*  
AUDITOR, LOGAN COUNTY, OHIO  
RECORDED IN PLAT CABINET B, SLIDE 23A+B, 24A+B, 25A  
RECEIVED FOR RECORD AT 3:49:00 0'CLOCK P.M.  
THIS 7th DAY OF November, 1997.  
*Carolyn Collins*  
RECORDER, LOGAN COUNTY, OHIO

CURVE	DELTA ANGLE	RADIUS	ARC	TANGENT	CHORD	CHORD BEARING
C 1	1° 17' 48"	5569.58	126.04	63.03	126.04	S 58° 35' 40" E
C 2	5° 10' 48"	1418.62	128.26	64.17	128.21	N 45° 35' 42" W
C 3	1° 07' 44"	5569.58	109.74	54.87	109.74	S 57° 22' 54" E
C 4	7° 47' 20"	736.21	100.08	50.12	100.00	S 45° 21' 43" E
C 5	1° 32' 06"	1418.62	38.00	19.00	38.00	N 42° 14' 12" W
C 6	2° 25' 18"	1418.62	59.96	29.98	59.95	S 46° 58' 27" E
C 7	6° 42' 54"	1418.62	166.26	83.23	166.17	S 44° 49' 39" E

WE DO HEREBY STATE THAT THESE DRAWINGS OF WHETSTONE COMMONS CONDOMINIUM SHOW ALL BUILDINGS AS CONSTRUCTED.

*Michael W. Bow*  
MICHAEL W. BOW  
PROFESSIONAL ENGINEER 38860  
APRIL 25, 1997



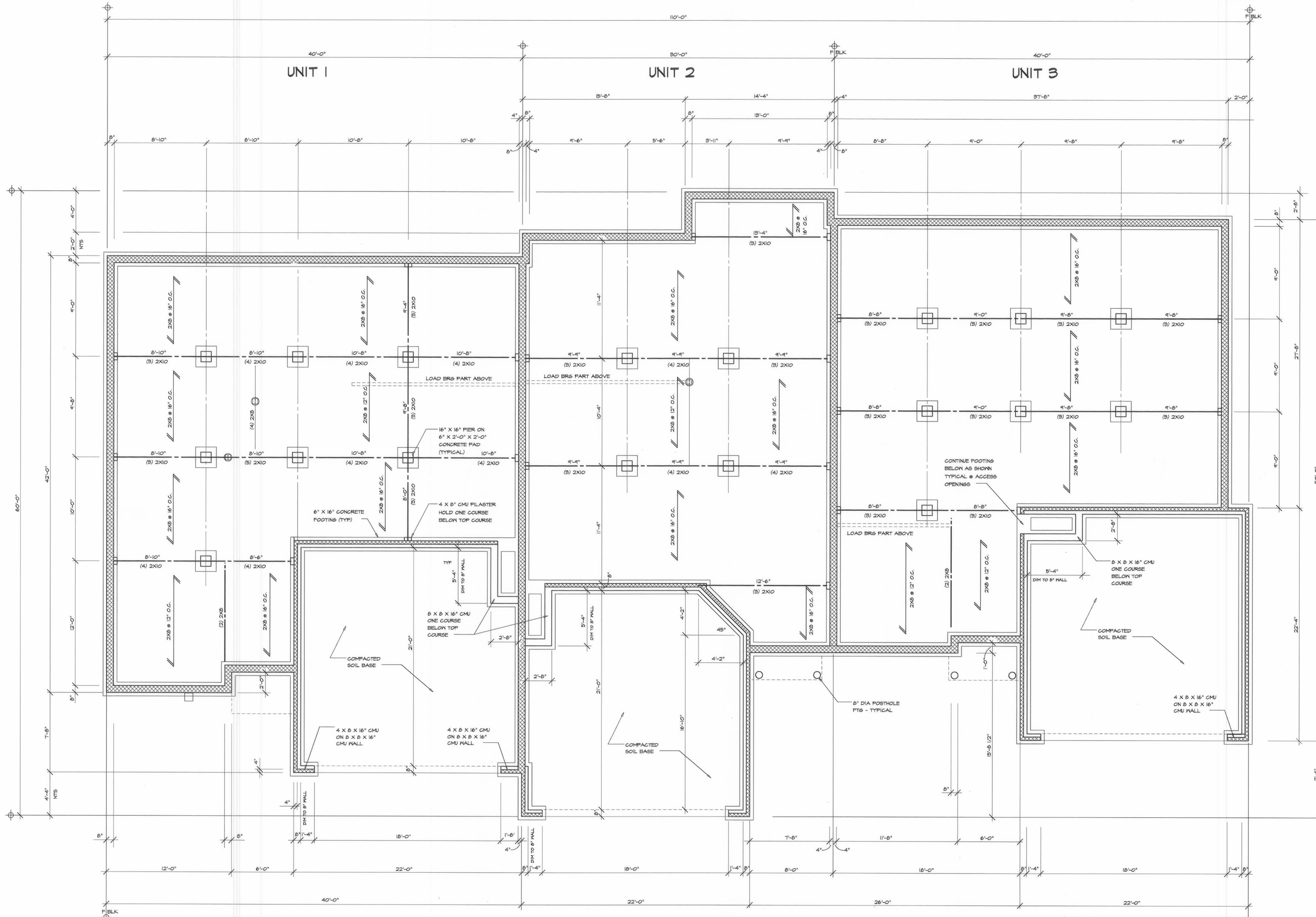
THE M & K ENGINEERING CO.  
1691 T. R. 31 NORTH  
BELLEFONTAINE, OHIO 43311  
(937) 592-2697

*Jeffrey I. Lee*  
JEFFREY I. LEE  
PROFESSIONAL SURVEYOR 6359  
APRIL 25, 1997



LEE SURVEYING AND MAPPING CO., INC.  
117 NORTH MADRIVER STREET  
BELLEFONTAINE OHIO, 43311  
(937) 593-7335

ORIGINAL STAMP IN GREEN



FREDRIC A  
**GOODMAN**  
 ARCHITECTS  
 182 EAST LONG ST  
 COLUMBUS, OHIO 43215  
 614-461-1300  
 (FAX) 614-461-1305

**SHADOWBROOKE**  
 VILLAS WEST STONE COMMONS  
 BELLEFONTAINE OHIO 43311

DRAWING NAME  
**FOUNDATION PLAN**

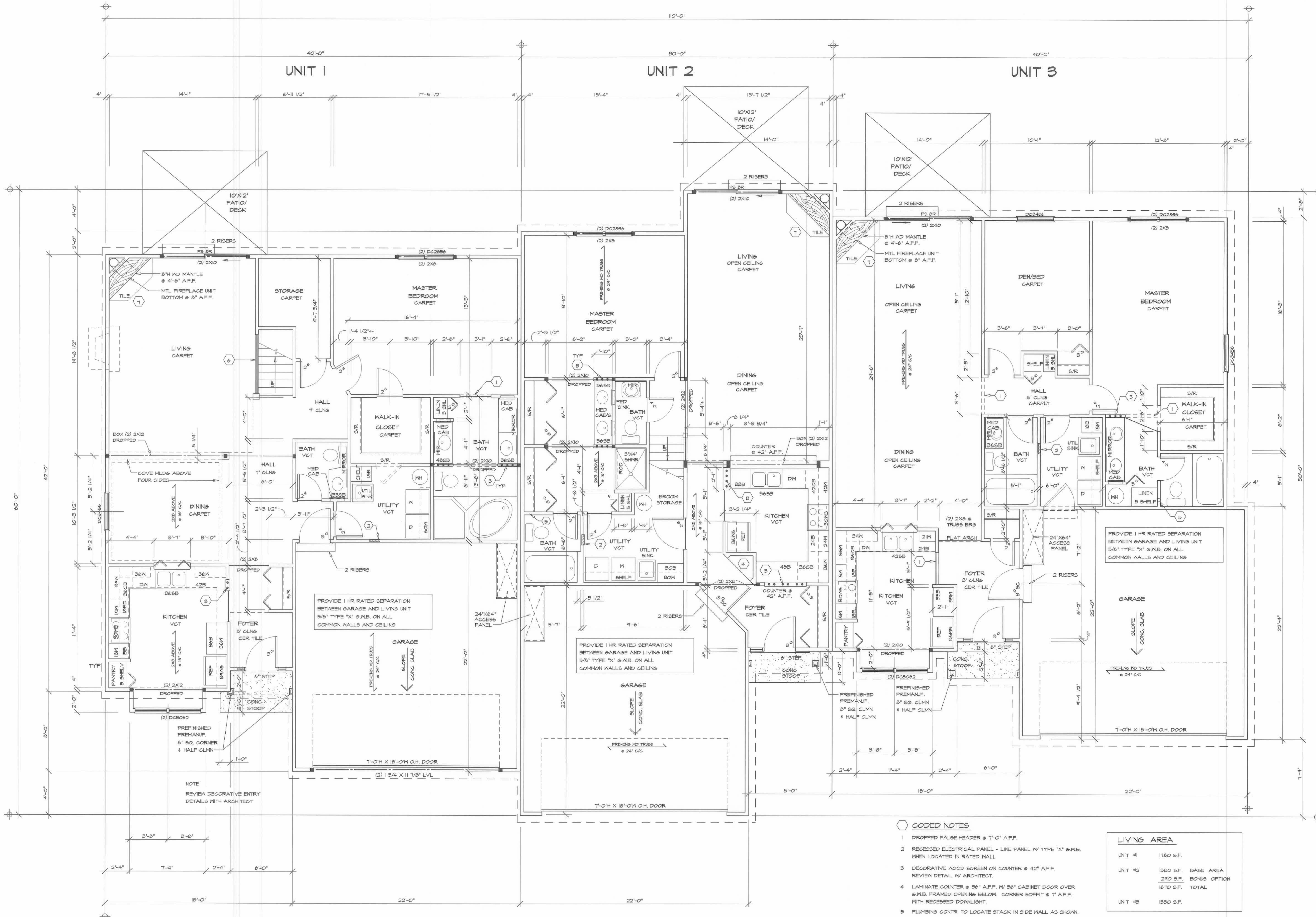
REVISION  
 DATE  
 CONSTRUCTION DWGSS  
 DECEMBER 5, 1996

SHEET NO.

**A-1**

**FOUNDATION PLAN**  
 1/4" = 1'-0"

**EXHIBIT B - 1**



FREDRIC /  
**GOODMAN**  
 ARCHITECT  
 182 EAST LONG ST.  
 COLUMBUS, OHIO 43215  
 614-461-1300  
 (FAX) 614-461-1305

**SHADOWBROOKE**  
 VILLAS @ WEST STONE COMMONS  
 BELLEFONTAINE OHIO 43311

DRAWING NAME  
 FIRST FLOOR  
**CONSTRUCTION PLAN**

- CODED NOTES**
- 1 DROPPED FALSE HEADER @ 7'-0" A.F.F.
  - 2 RECESSED ELECTRICAL PANEL - LINE PANEL W/ TYPE 'X' 6x6, WHEN LOCATED IN RATED WALL.
  - 3 DECORATIVE WOOD SCREEN ON COUNTER @ 42" A.F.F. REVIEW DETAIL W/ ARCHITECT.
  - 4 LAMINATE COUNTER @ 36" A.F.F. W/ 36" CABINET DOOR OVER 6x6, FRAMED OPENING BELOW. CORNER SOFFIT @ 7" A.F.F. WITH RECESSED DOWNLIGHT.
  - 5 PLUMBING CONTR. TO LOCATE STACK IN SIDE WALL AS SHOWN.
  - 6 DECORATIVE WOOD RAILING AND PANELS. REVIEW DETAIL W/ ARCHITECT.
  - 7 MANUFACTURED FIREPLACE UNIT - BOTTOM 8" A.F.F., 8x8 CERAMIC TILE SURROUND AND HEARTH. 8" WOOD MANTLE @ 4'-6" A.F.F. REVIEW DETAIL WITH ARCHITECT.

LIVING AREA	
UNIT #1	1780 S.F.
UNIT #2	1580 S.F. BASE AREA 230 S.F. BONUS OPTION 1670 S.F. TOTAL
UNIT #3	1550 S.F.

REVISION	
DATE	CONSTRUCTION DWGSS
	DECEMBER 5, 1996
SHEET NO.	

**A-2**

**EXHIBIT B - 2**

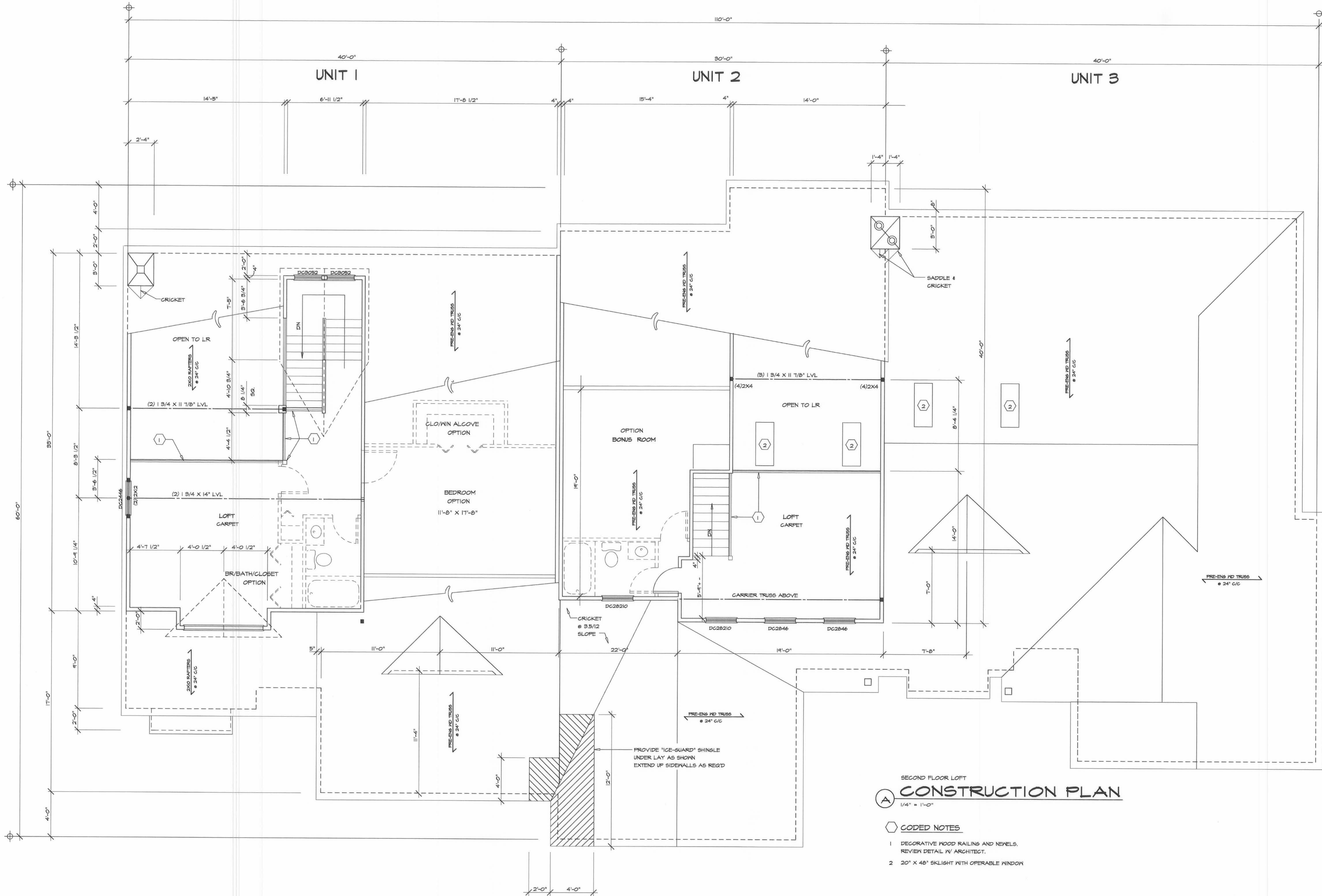
FREDRIG A  
GOODMAN  
ARCHITECTS  
182 EAST LONG ST  
COLUMBUS, OHIO 43215  
614-461-1300  
(FAX) 614-461-1305

SHADOWBROOKE  
VILLAS WEST STONE COMMONS  
BELLEFONTAINE OHIO 43311

DRAWING NAME  
LOFT  
**CONSTRUCTION PLAN**

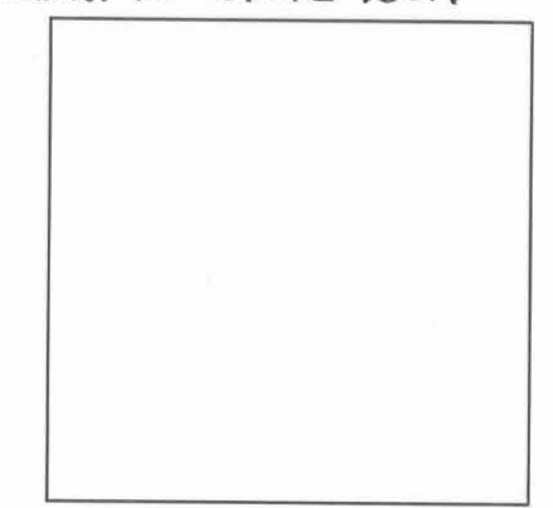
REVISION  
DATE  
CONSTRUCTION DWSS  
DECEMBER 5, 1996

SHEET NO.  
**A-3**



SECOND FLOOR LOFT  
**A CONSTRUCTION PLAN**  
1/4" = 1'-0"

- CODED NOTES
- 1 DECORATIVE WOOD RAILING AND NEWELS. REVIEW DETAIL W/ ARCHITECT.
  - 2 20" X 48" SKYLIGHT WITH OPERABLE WINDOW



FREDRIC A  
GOODMAN  
ARCHITECT  
182 EAST LONG ST  
COLUMBUS, OHIO 43215  
614-461-1300  
(FAX) 614-461-1305

SHADOWBROOKE  
VILLAS WEST STONE COMMONS  
BELLEFONTAINE OHIO 43311

EXTERIOR ELEVATIONS

DRAWING NAME

REVISION  
DATE  
CONSTRUCTION DNGS  
DECEMBER 5, 1996

SHEET NO.

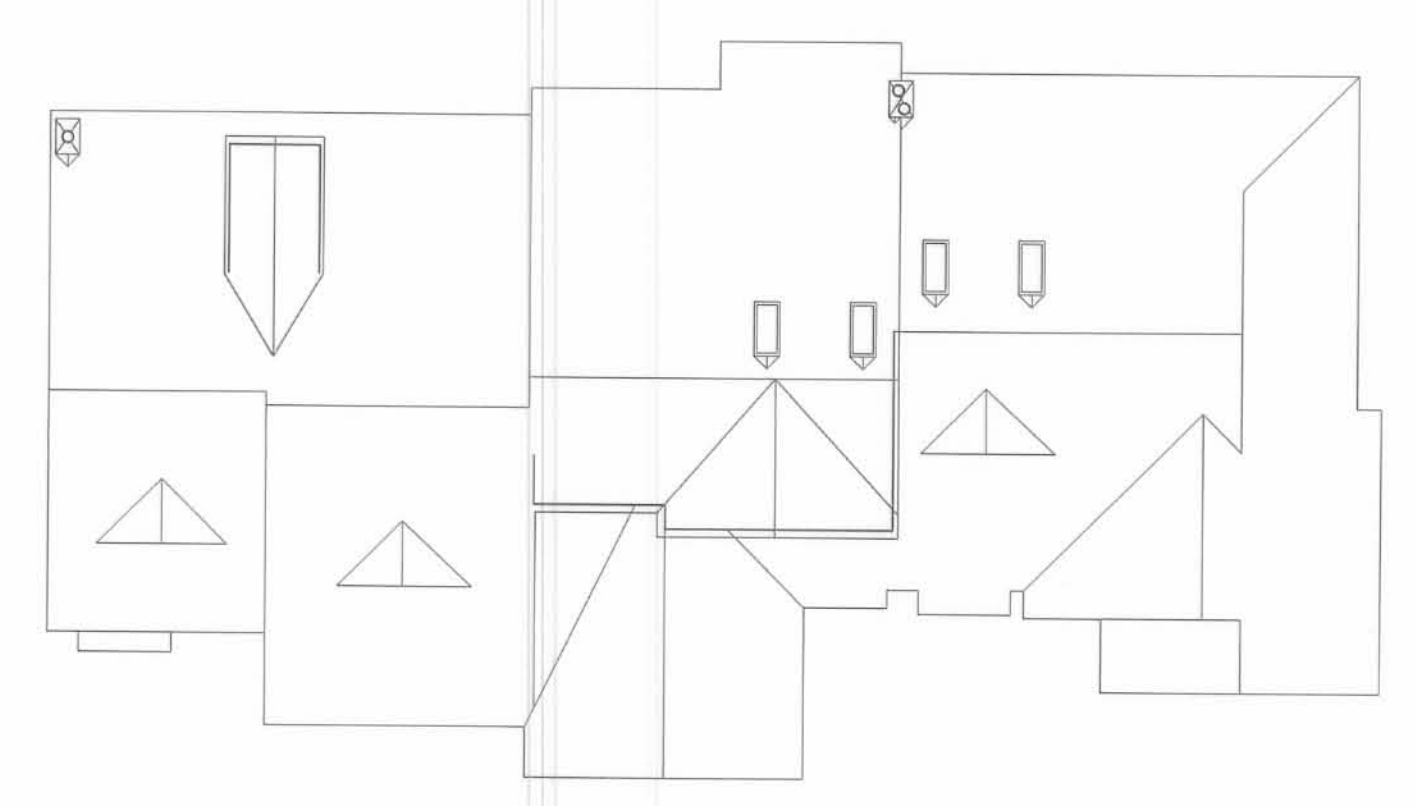
A-4



D WEST ELEVATION  
1/8" = 1'-0"



C EAST ELEVATION  
1/8" = 1'-0"



E ROOF PLAN  
1/8" = 1'-0"



B NORTH ELEVATION  
1/8" = 1'-0"



A SOUTH ELEVATION  
1/4" = 1'-0"

EXHIBIT B - 4