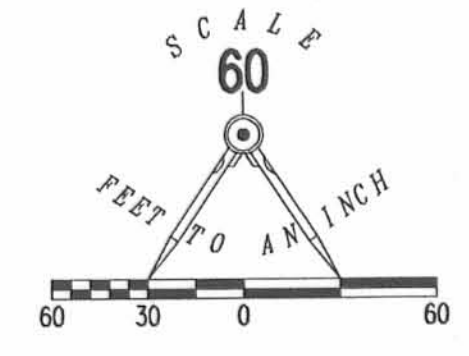


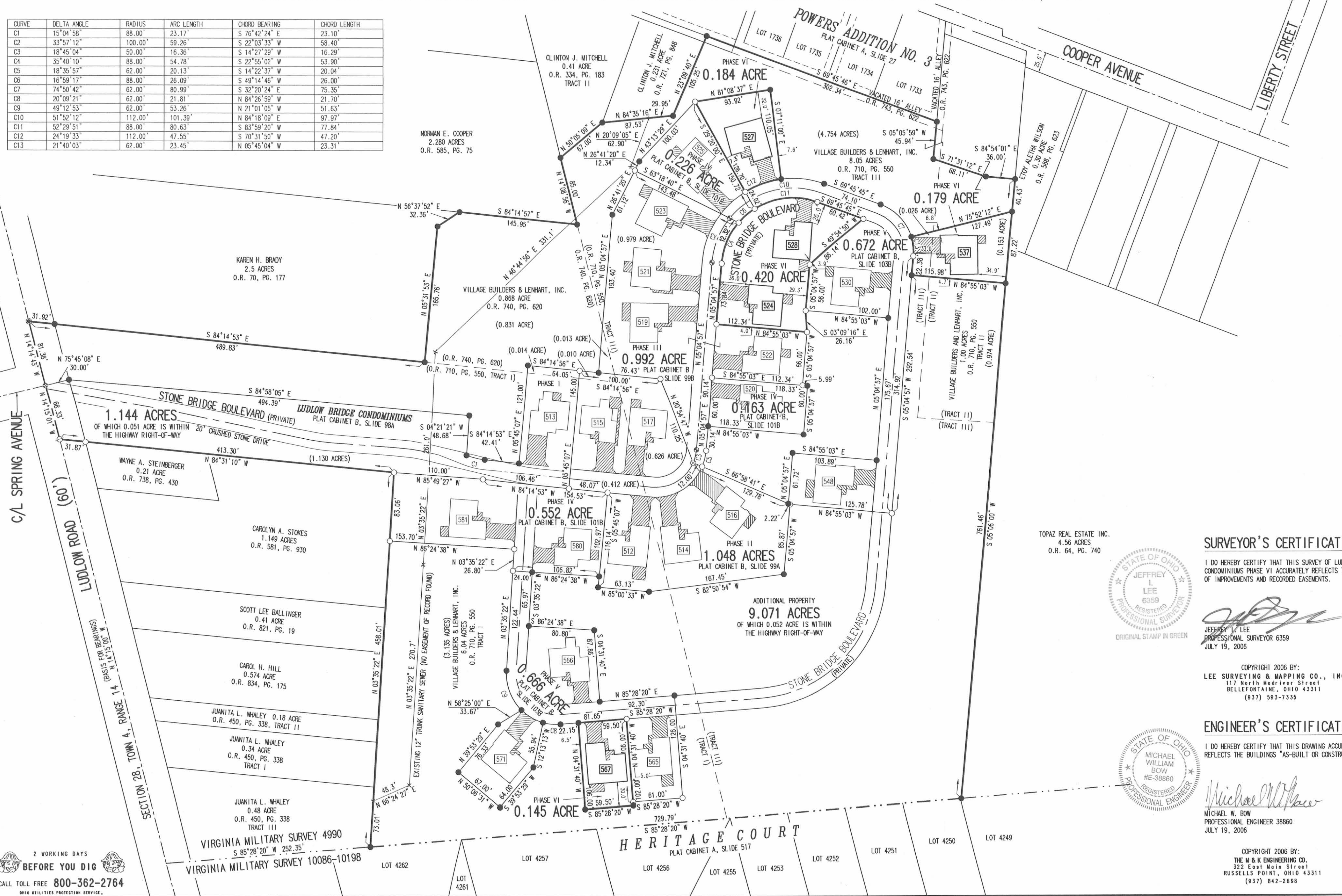
EXHIBIT B TO DECLARATION AND BYLAWS OF LUDLOW BRIDGE CONDOMINIUMS - PHASE VI

6.04 ACRE TRACT, 1.00 ACRE TRACT, 8.05 ACRE TRACT OFFICIAL RECORD 710, PAGE 550, TRACTS I, II AND III
0.868 ACRE TRACT OFFICIAL RECORD 740, PAGE 620
VIRGINIA MILITARY SURVEY 4990 CITY OF BELLEFONTAINE LAKE TOWNSHIP LOGAN COUNTY, OHIO



- LEGEND:
- ⊙ 1-1/4 INCH IRON PIPE FOUND
 - 5/8 INCH IRON ROD SET
 - 5/8 INCH IRON ROD FOUND
 - ⊙ MAG NAIL SET
 - ⊙ MAG NAIL FOUND
 - ⊙ RAILROAD SPIKE SET
 - ⊙ RAILROAD SPIKE FOUND
 - ▨ LIMITED COMMON AREA
 - [] UNIT NUMBER

CURVE	DELTA ANGLE	RADIUS	ARC LENGTH	CHORD BEARING	CHORD LENGTH
C1	15°04'58"	88.00'	23.17'	S 76°42'24" E	23.10'
C2	33°57'12"	100.00'	59.26'	S 22°03'33" W	58.40'
C3	18°45'04"	50.00'	16.36'	S 14°27'29" W	16.29'
C4	35°40'10"	88.00'	54.78'	S 22°55'02" W	53.90'
C5	18°35'57"	62.00'	20.13'	S 14°22'37" W	20.04'
C6	16°59'17"	88.00'	26.09'	S 49°14'46" W	26.00'
C7	74°50'42"	62.00'	80.99'	S 32°20'24" E	75.35'
C8	20°09'21"	62.00'	21.81'	N 84°26'59" W	21.70'
C9	49°12'53"	62.00'	53.26'	N 21°01'05" W	51.63'
C10	51°52'12"	112.00'	101.39'	N 84°18'09" E	97.97'
C11	52°29'51"	88.00'	80.63'	S 83°59'20" W	77.84'
C12	24°19'33"	112.00'	47.55'	S 70°31'50" W	47.20'
C13	21°40'03"	62.00'	23.45'	N 05°45'04" W	23.31'



- NOTES:
- EASEMENTS IF SHOWN ARE AS PROVIDED BY DEVELOPER. THE SURVEYOR DID NOT SEARCH FOR ADDITIONAL EASEMENTS.
 - THE WORD "CERTIFY" IS INTENDED TO BE AS DEFINED IN OHIO ADMINISTRATIVE CODE 4733-35-04(C).
 - BUILDING HEIGHT FROM PEAK OF ROOF TO GROUND:
UNIT 524 IS 21.0'
UNIT 527 IS 23.6'
UNIT 528 IS 20.2'
UNIT 537 IS 20.4'
UNIT 567 IS 20.0'

SURVEYOR'S CERTIFICATION:

I DO HEREBY CERTIFY THAT THIS SURVEY OF LUDLOW BRIDGE CONDOMINIUMS PHASE VI ACCURATELY REFLECTS THE LOCATION OF IMPROVEMENTS AND RECORDED EASEMENTS.

JEFFREY L. LEE
PROFESSIONAL SURVEYOR 6359
JULY 19, 2006

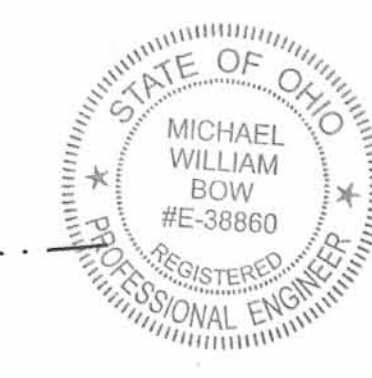


COPYRIGHT 2006 BY:
LEE SURVEYING & MAPPING CO., INC.
117 North Medriver Street
BELLEFONTAINE, OHIO 43311
(937) 593-7335

ENGINEER'S CERTIFICATION:

I DO HEREBY CERTIFY THAT THIS DRAWING ACCURATELY REFLECTS THE BUILDINGS "AS-BUILT OR CONSTRUCTED".

MICHAEL W. BOW
PROFESSIONAL ENGINEER 38860
JULY 19, 2006



PRE-APPROVAL *[Signature]* 8-1-06
PLAT CHECKED *[Signature]* 8-1-06
TRANSFERRED THIS 1st DAY OF August, 2006
AUDITOR, LOGAN COUNTY, OHIO
RECORDED IN PLAT CABINET B, SLIDE 105A
RECEIVED FOR RECORD AT 3:50 O'CLOCK P.M.
THIS 1st DAY OF August, 2006
[Signature]
RECORDER, LOGAN COUNTY, OHIO

2 WORKING DAYS
BEFORE YOU DIG
CALL TOLL FREE 800-362-2764
OHIO UTILITIES PROTECTION SERVICE

COPYRIGHT 2006 BY:
THE M & K ENGINEERING CO.
322 East Main Street
RUSSELLS POINT, OHIO 43311
(937) 842-2698