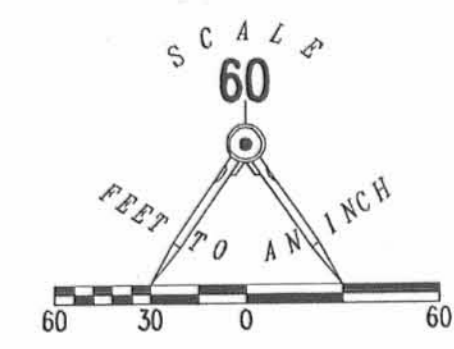


EXHIBIT B TO DECLARATION AND BYLAWS OF LUDLOW BRIDGE CONDOMINIUMS - PHASE X

6.04 ACRE TRACT, 1.00 ACRE TRACT, 8.05 ACRE TRACT OFFICIAL RECORD 710, PAGE 550, TRACTS I, II AND III

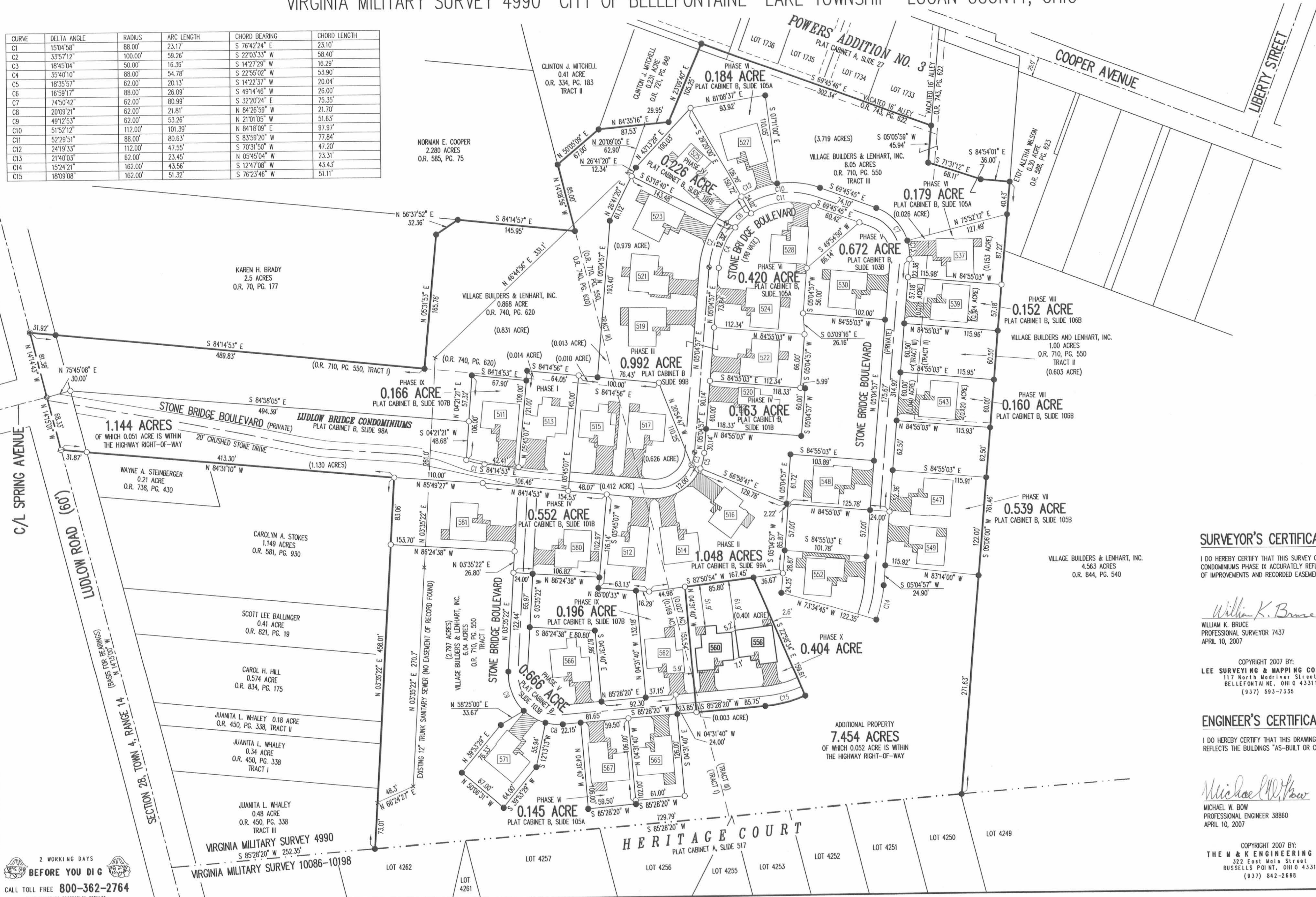
0.868 ACRE TRACT OFFICIAL RECORD 740, PAGE 620

VIRGINIA MILITARY SURVEY 4990 CITY OF BELLEFONTAINE LAKE TOWNSHIP LOGAN COUNTY, OHIO



CURVE	DELTA ANGLE	RADIUS	ARC LENGTH	CHORD BEARING	CHORD LENGTH
C1	15°04'58"	88.00'	23.17'	S 76°42'24" E	23.10'
C2	33°57'12"	100.00'	59.26'	S 22°03'33" W	58.40'
C3	18°45'04"	50.00'	16.36'	S 14°27'29" W	16.29'
C4	35°40'10"	88.00'	54.78'	S 22°55'02" W	53.90'
C5	18°35'57"	62.00'	20.13'	S 14°22'37" W	20.04'
C6	16°59'17"	88.00'	26.09'	S 49°14'46" W	26.00'
C7	74°50'42"	62.00'	80.99'	S 32°20'24" E	75.35'
C8	20°08'21"	62.00'	21.81'	N 84°26'59" W	21.70'
C9	49°12'53"	62.00'	53.28'	N 21°01'05" W	51.63'
C10	51°52'12"	112.00'	101.39'	N 84°18'09" E	97.97'
C11	52°29'51"	88.00'	80.63'	S 83°59'20" W	77.84'
C12	24°19'33"	112.00'	47.55'	S 70°31'50" W	47.20'
C13	21°40'03"	62.00'	23.45'	N 05°45'04" W	23.31'
C14	18°24'21"	162.00'	43.56'	S 12°47'08" W	43.43'
C15	18°09'08"	162.00'	51.32'	S 76°23'46" W	51.11'

- LEGEND:
- 1-1/4 INCH IRON PIPE FOUND
 - 5/8 INCH IRON ROD SET
 - 5/8 INCH IRON ROD FOUND
 - MAG NAIL SET
 - MAG NAIL FOUND
 - RAILROAD SPIKE SET
 - RAILROAD SPIKE FOUND
 - ▨ LIMITED COMMON AREA
 - 111 UNIT NUMBER



- NOTES:
- EASEMENTS IF SHOWN ARE AS PROVIDED BY DEVELOPER. THE SURVEYOR DID NOT SEARCH FOR ADDITIONAL EASEMENTS.
 - THE WORD "CERTIFY" IS INTENDED TO BE AS DEFINED IN OHIO ADMINISTRATIVE CODE 4733-35-04(C).
 - BUILDING HEIGHT FROM PEAK OF ROOF TO GROUND:
UNIT 556 IS 19.8'
UNIT 560 IS 19.6'

SURVEYOR'S CERTIFICATION:

I DO HEREBY CERTIFY THAT THIS SURVEY OF LUDLOW BRIDGE CONDOMINIUMS PHASE IX ACCURATELY REFLECTS THE LOCATION OF IMPROVEMENTS AND RECORDED EASEMENTS.

William K. Bruce
WILLIAM K. BRUCE
PROFESSIONAL SURVEYOR 7437
APRIL 10, 2007



COPYRIGHT 2007 BY:
LEE SURVEYING & MAPPING CO., INC.
117 North Meddler Street
BELLEFONTAINE, OHIO 43311
(937) 593-7335

ENGINEER'S CERTIFICATION:

I DO HEREBY CERTIFY THAT THIS DRAWING ACCURATELY REFLECTS THE BUILDINGS "AS-BUILT OR CONSTRUCTED".

Michael W. Bow
MICHAEL W. BOW
PROFESSIONAL ENGINEER 38860
APRIL 10, 2007



COPYRIGHT 2007 BY:
THE M & K ENGINEERING CO.
322 East Main Street
RUSSELLS POINT, OHIO 43311
(937) 842-2698

PRE-APPROVAL *J.C. [Signature]* 4-13-07
 PLAT CHECKED *J.C. [Signature]* 4-13-07
 TRANSFERRED THIS 13th DAY OF April, 2007
 AUDITOR, LOGAN COUNTY, OHIO *Michael E. [Signature]*
 RECORDED IN PLAT CABINET B, SLIDE 108A
 RECEIVED FOR RECORD AT 2:16 O'CLOCK P.M.
 THIS 13th DAY OF April, 2007
 Recorder, Logan County, Ohio *Linda Hanson*

2 WORKING DAYS
BEFORE YOU DIG
CALL TOLL FREE 800-362-2764
OHIO UTILITIES PROTECTION SERVICE