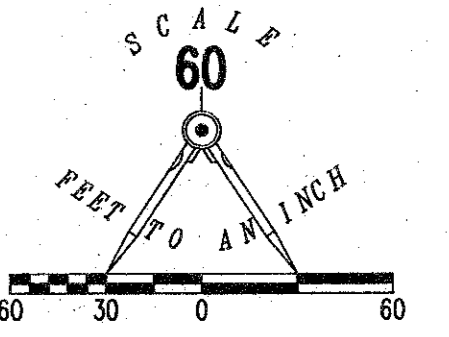
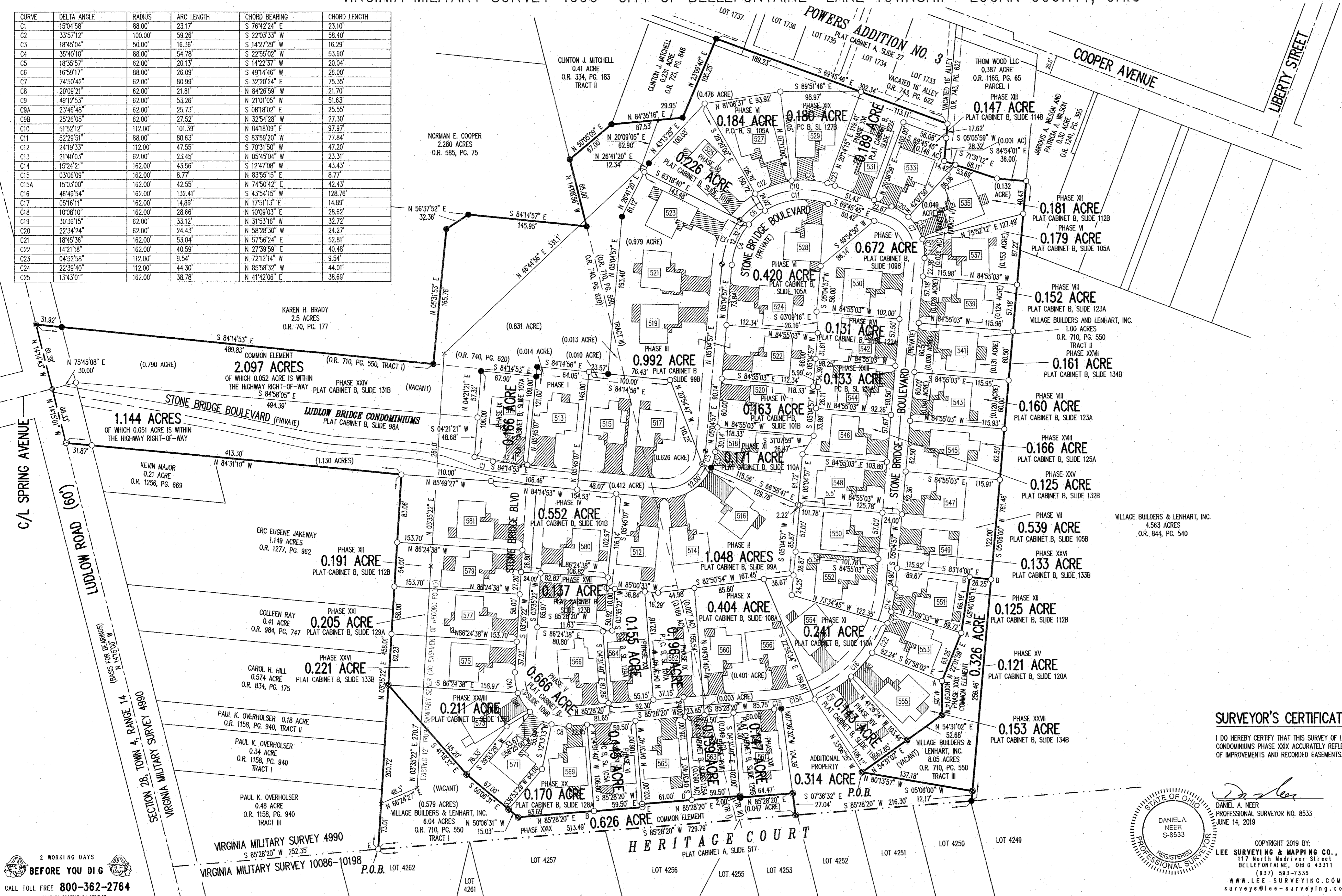


LUDLOW BRIDGE CONDOMINIUMS — PHASE XXIX

6.04 ACRE TRACT, 1.00 ACRE TRACT, 8.05 ACRE TRACT OFFICIAL RECORD 710, PAGE 550, TRACTS I, II AND III
 0.868 ACRE TRACT OFFICIAL RECORD 740, PAGE 620
 VIRGINIA MILITARY SURVEY 4990 CITY OF BELLEFONTAINE LAKE TOWNSHIP LOGAN COUNTY, OHIO



CURVE	DELTA ANGLE	RADIUS	ARC LENGTH	CHORD BEARING	CHORD LENGTH
C1	15°04'58"	88.00'	23.17'	S 76°42'24" E	23.10'
C2	33°57'12"	100.00'	59.26'	S 22°03'33" W	58.40'
C3	18°45'04"	50.00'	16.36'	S 14°27'29" W	16.29'
C4	35°40'10"	88.00'	54.78'	S 22°55'02" W	53.90'
C5	18°35'57"	62.00'	20.13'	S 14°22'37" W	20.04'
C6	16°59'17"	88.00'	26.09'	S 49°14'46" W	26.00'
C7	74°50'42"	62.00'	80.99'	S 32°20'24" E	75.35'
C8	20°09'21"	62.00'	21.81'	N 84°26'59" W	21.70'
C9	49°12'53"	62.00'	53.26'	N 21°01'05" W	51.63'
C9A	23°46'48"	62.00'	25.73'	S 08°18'02" E	25.55'
C9B	25°26'05"	62.00'	27.52'	N 32°54'28" W	27.30'
C10	51°52'12"	112.00'	101.39'	N 84°18'09" E	97.97'
C11	52°29'51"	88.00'	80.63'	S 83°59'20" W	77.84'
C12	24°19'33"	112.00'	47.55'	S 70°31'50" W	47.20'
C13	21°40'03"	62.00'	23.45'	N 05°45'04" W	23.31'
C14	15°24'21"	162.00'	43.56'	S 12°47'08" W	43.43'
C15	03°06'09"	162.00'	8.77'	N 83°55'15" E	8.77'
C15A	15°03'00"	162.00'	42.56'	N 74°50'42" E	42.43'
C16	46°49'54"	162.00'	132.41'	S 43°54'15" W	128.76'
C17	05°16'11"	162.00'	14.89'	N 17°51'13" E	14.89'
C18	10°08'10"	162.00'	28.66'	N 10°09'03" E	28.62'
C19	30°36'15"	62.00'	33.12'	N 31°53'16" W	32.72'
C20	22°34'24"	62.00'	24.43'	N 58°28'30" W	24.27'
C21	18°45'36"	162.00'	53.04'	N 57°56'24" E	52.81'
C22	14°21'18"	162.00'	40.59'	N 27°39'59" E	40.48'
C23	04°52'58"	112.00'	9.54'	N 72°12'14" W	9.54'
C24	22°39'40"	112.00'	44.30'	N 85°58'32" W	44.01'
C25	13°43'01"	162.00'	38.78'	N 41°42'06" E	38.69'



- LEGEND:
- 1-1/4 INCH IRON PIPE FOUND
 - 5/8 INCH IRON ROD SET
 - 5/8 INCH BY 30 INCH IRON ROD SET WITH PLASTIC I.D. CAP STAMPED "P.S. 8533"
 - 5/8 INCH IRON ROD FOUND
 - MAG NAIL SET
 - MAG NAIL FOUND
 - RAILROAD SPIKE SET
 - RAILROAD SPIKE FOUND
 - ▨ LIMITED COMMON AREA
 - [] UNIT NUMBER

NOTES:

- EASEMENTS IF SHOWN ARE AS PROVIDED BY DEVELOPER. THE SURVEYOR DID NOT SEARCH FOR ADDITIONAL EASEMENTS.
- THE WORD "CERTIFY" IS INTENDED TO BE AS DEFINED IN OHIO ADMINISTRATIVE CODE 4733-35-04(C).

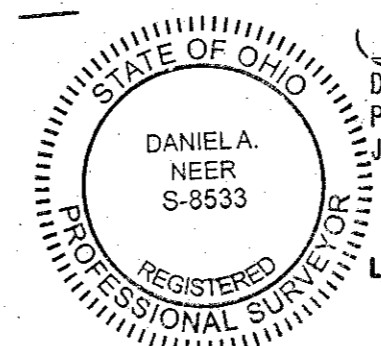
SURVEY CAP KEY:

- A = I.D. CAP STAMPED "LEE PS 7437"
- B = I.D. CAP ILLISIBLE
- D = NO CAP
- E = I.D. CAP STAMPED "LEE LS 6359"

Volume B Page 111A
 Filed in LOGAN COUNTY OH
 PATRICIA MYERS, COUNTY RECORDER
 06-25-2019 10:06:20 am Fee: \$6.40
 201906080419 PLAT

PRE-APPROVAL *Suzanne M. Cochran 6-18-19*
 PLAT CHECKED *Suzanne M. Cochran 6-18-19*
 TRANSFERRED THIS 25 DAY OF June, 2019
 AUDITOR, LOGAN COUNTY, OHIO
 RECORDED IN PLAT CABINET B, SLIDE 141A
 RECEIVED FOR RECORD AT 9:20 O'CLOCK A.M.
 THIS 25th DAY OF June, 2019
Patricia A. Myers
 RECORDER, LOGAN COUNTY, OHIO

SURVEYOR'S CERTIFICATION:
 I DO HEREBY CERTIFY THAT THIS SURVEY OF LUDLOW BRIDGE CONDOMINIUMS PHASE XXIX ACCURATELY REFLECTS THE LOCATION OF IMPROVEMENTS AND RECORDED EASEMENTS.



D. Neer
 DANIEL A. NEER
 PROFESSIONAL SURVEYOR NO. 8533
 JUNE 14, 2019
 COPYRIGHT 2019 BY:
 LEE SURVEYING & MAPPING CO., INC.
 117 North Medway Street
 BELLEFONTAINE, OHIO 43311
 (937) 593-7335
 WWW.LEE-SURVEYING.COM
 surveys@lee-surveying.com

2 WORKING DAYS
 BEFORE YOU DIG
 CALL TOLL FREE 800-362-2764
 OHIO UTILITIES PROTECTION SERVICE