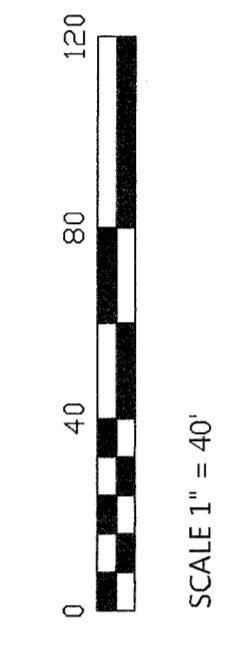


EXHIBIT 2 TO DECLARATION AND BYLAWS OF  
**EAGLES NEST CONDOMINIUMS**

**PHASE VII**  
**PEAK ASSETS LTD.**

5.059 ACRE TRACT OFFICIAL RECORD 1301, PAGE 267  
 SECTION 33, TOWN 4, RANGE 14  
 CITY OF BELLEFONTAINE, LAKE TOWNSHIP, LOGAN COUNTY, OHIO



**APPROVALS**  
 APPROVED BY THE BELLEFONTAINE PLANNING COMMISSION  
 THIS 6 DAY OF June, 2021  
 DIRECTOR PLANNING COMMISSION

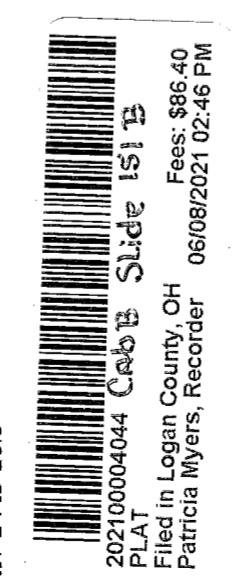
PRE-APPROVAL Signatures 6-2-2021  
 PLAT CHECKED Signatures 6-8-2021  
 TRANSFERRED THIS 8 DAY OF June, 2021  
 AUDITOR, LOGAN COUNTY, OHIO

RECORDED IN PLAT CABINET B, SLIDE 151 B  
 RECEIVED FOR RECORD AT 2:46 O'CLOCK P.M.  
 THIS 8th DAY OF June, 2021  
Patricia A. Myers  
 RECORDER, LOGAN COUNTY, OHIO

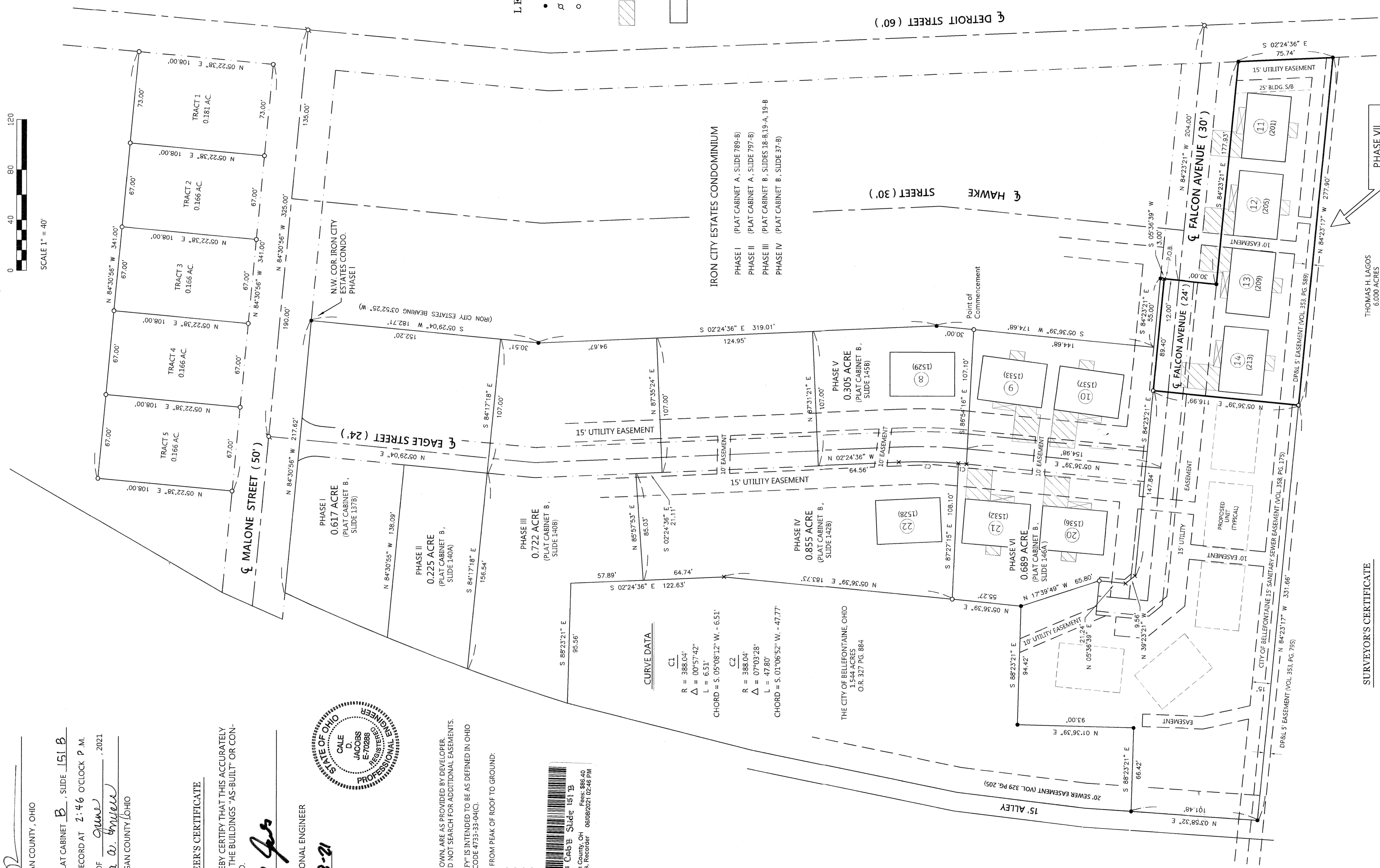
**ENGINEER'S CERTIFICATE**  
 I DO HEREBY CERTIFY THAT THIS ACCURATELY  
 REFLECTS THE BUILDINGS "AS-BUILT" OR CON-  
 STRUCTED.  
James W. Geeslin  
 PROFESSIONAL ENGINEER  
 DATE 6-8-21



**NOTES:**  
 1) EASEMENTS, IF SHOWN, ARE AS PROVIDED BY DEVELOPER.  
 THE SURVEYOR DID NOT SEARCH FOR ADDITIONAL EASEMENTS.  
 2) THE WORD "CERTIFY" IS INTENDED TO BE AS DEFINED IN OHIO  
 ADMINISTRATIVE CODE 4733-33-04(C).  
 3) BUILDING HEIGHT FROM PEAK OF ROOF TO GROUND:  
 UNIT 11 IS 16.8'  
 UNIT 12 IS 16.8'  
 UNIT 13 IS 16.8'  
 UNIT 14 IS 16.8'



- LEGEND**
- = 5/8 INCH IRON BAR FOUND.
  - ⊕ = MAG SPIKE SET.
  - = 5/8 INCH IRON BAR SET.
  - ▨ = DENOTES LIMITED COMMON AREA (CONCRETE PAD/DRIVEWAY).
  - = ALL AREAS AND IMPROVEMENTS NOT LABELED WITH A UNIT DESIGNATION OR AS LIMITED COMMON AREA ARE COMMON AREA.

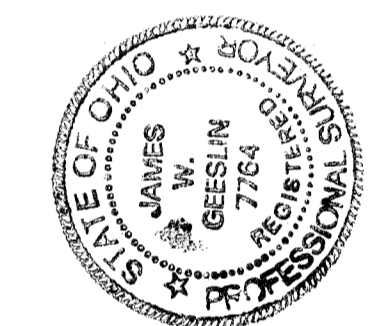


**CURVE DATA**  
**C1**  
 R = 388.04'  
 Δ = 00°57'42"  
 L = 6.51'  
 CHORD = S. 05°08'12" W. - 6.51'  
**C2**  
 R = 388.04'  
 Δ = 07°03'28"  
 L = 47.80'  
 CHORD = S. 01°06'52" W. - 47.77'

THE CITY OF BELLEFONTAINE, OHIO  
 1.544 ACRES  
 O.R. 327 PG. 88-4

**SURVEYOR'S CERTIFICATE**  
 I DO HEREBY CERTIFY THAT THIS SURVEY OF EAGLES NEST CONDOMINIUMS PHASE VII ACCURATELY REFLECTS THE LOCATION OF IMPROVEMENTS AND RECORDED EASEMENTS.

James W. Geeslin  
 PROFESSIONAL SURVEYOR 7764  
 DATE: MAY 28, 2021



**BASIS OF BEARINGS**  
 THE BEARINGS CONTAINED HEREIN ARE BASED ON GPS OBSERVATIONS LISTED IN RECORD 1301, PAGE 267, LOGAN COUNTY, OHIO STATE PLANE SOUTH ZONE, HORIZONTAL DATUM NAD83 (2011).  
 THOMAS H. LAGOS  
 6.000 ACRES  
 O.R. 805 PG. 190

**GEESLIN SURVEYING**  
 525 S. SECOND ST.  
 COLDWATER, OHIO 45828  
 Phone : (419) 678 - 7233  
 Email : geeslinsurveying@gmail.com