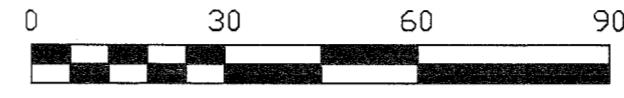


WRIGHT PLACE CONDOMINIUM PHASE ONE

SITUATED IN THE BETWEEN THE MIAMI RIVERS SURVEY, IN THE CITY OF BELLEFONTAINE, LAKE TOWNSHIP, SECTION 33, TOWNSHIP 4, RANGE 14, LOGAN COUNTY, OHIO AND BEING PART OF THE LANDS CONVEYED TO PEAK ACQUISITIONS LTD BY DEEDS RECORDED AT OFFICIAL RECORD 1301, PAGE 122 (TRACTS II, III, & IV), AND OFFICIAL RECORD 1336, PAGE 578 (TRACTS I & II), AND BEING ALL OF LOTS 4702 AND 4703 AND PART OF LOTS 4701 AND 4704 OF THE JADO VILLE SUBDIVISION (PLAT CABINET A, SLIDES 713A-715A).

CURVE DATA

$\Delta = 97^{\circ}37'35''$
 $R = 24.71'$
 $L = 42.10'$
 CHORD BEARS N $46^{\circ}24'29''$ E - 37.19'



SCALE 1" = 30'

KENT DRIVE (60')

KENT DRIVE

(WIDTH VARIES)

LEGEND

- = 5/8 INCH IRON BAR FOUND.
- = 5/8 INCH IRON BAR SET.
- ① = UNIT DESIGNATION.
- ▨ = DENOTES LIMITED COMMON AREA (CONCRETE PAD / DRIVEWAY).
- = ALL AREAS AND IMPROVEMENTS NOT LABELED WITH A UNIT DESIGNATION OR AS LIMITED COMMON AREA ARE COMMON AREA.

NOTES

- 1) EASEMENTS, IF SHOWN, ARE AS PROVIDED BY THE DEVELOPER. THE SURVEYOR DID NOT SEARCH FOR ADDITIONAL EASEMENTS.
- 2) THE WORD "CERTIFY" IS INTENDED TO BE DEFINED IN OHIO ADMINISTRATIVE CODE 4733-33-04(C).
- 3) BUILDING HEIGHT FROM PEAK OF ROOF TO GROUND.
 UNITS 1-10 = 16.0'

ENGINEER'S CERTIFICATE

I DO HEREBY CERTIFY THAT THIS ACCURATELY REFLECTS THE BUILDINGS "AS BUILT" OR CONSTRUCTED.

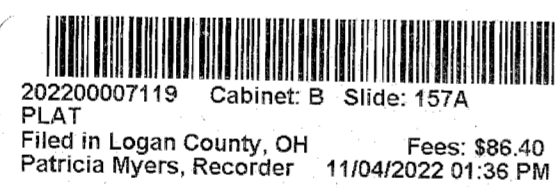
Handwritten signature

PROFESSIONAL ENGINEER

7/27/22
 DATE



APPROVALS



APPROVED BY THE BELLEFONTAINE PLANNING COMMISSION

THIS 20th DAY OF September, 2022.

Handwritten signature

DIRECTOR PLANNING COMMISSION

PRE-APPROVAL *Stacy M. Cochran 8-16-2022*

PLAT CHECKED *Stacy M. Cochran 11-4-2022*

TRANSFERRED THIS 4th DAY OF Nov., 2022.

Handwritten signature

AUDITOR, LOGAN COUNTY, OHIO.

RECORDED IN PLAT CABINET B, SLIDE 157A

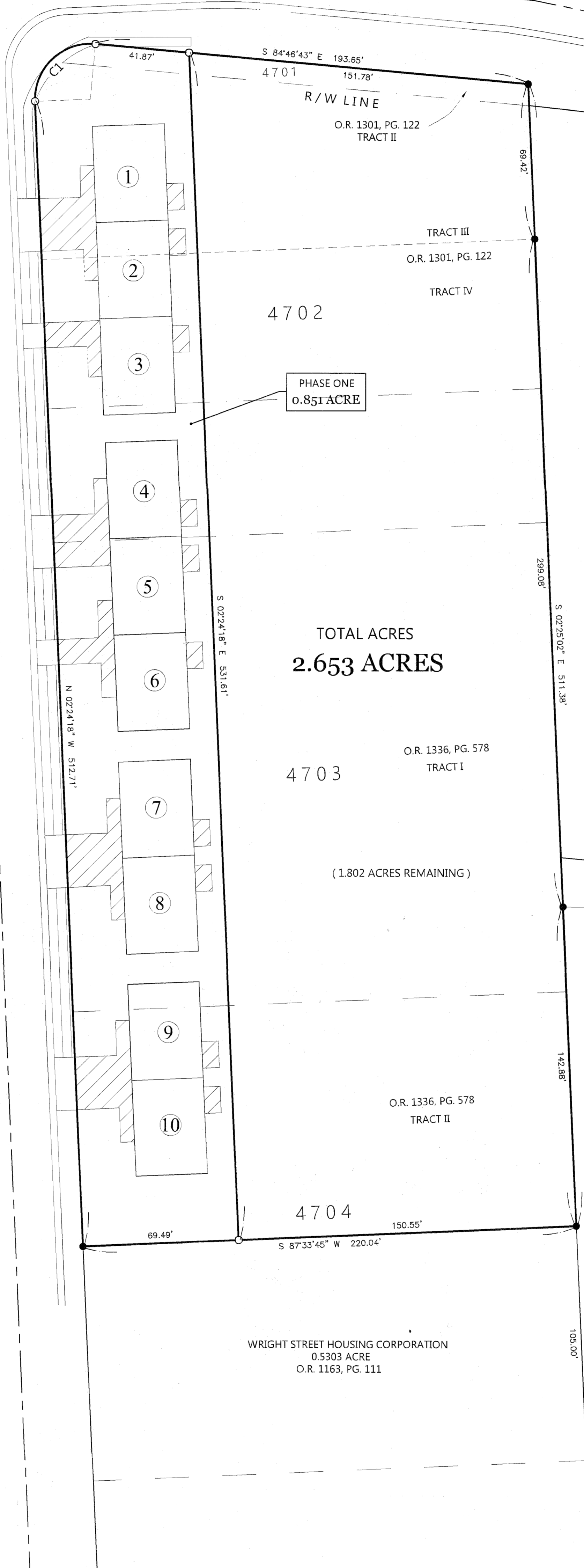
RECEIVED FOR RECORD AT 1:36 O'CLOCK P.M.

THIS 4th DAY OF November, 2022.

Patricia A. Myers

RECORDER, LOGAN COUNTY, OHIO.

WRIGHT STREET (60')



TOTAL ACRES
2.653 ACRES

4703
 O.R. 1336, PG. 578
 TRACT I

(1.802 ACRES REMAINING)

O.R. 1336, PG. 578
 TRACT II

WRIGHT STREET HOUSING CORPORATION
 0.5303 ACRE
 O.R. 1163, PG. 111

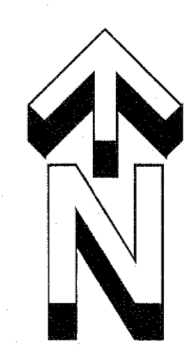
CAMPBELL AID PROPCO LLC
 2.458 ACRES
 O.R. 1123, PG. 432

JADO VILLE SUBDIVISION
 PLAT CABINET A, SLIDES 713A-715A

AUTUMN WOODS CONDOMINIUMS
 PLAT CABINET B, SLIDE 94A

SURVEY REFERENCE:

- 1) SURVEY BY DANIEL NEER, P.S. 8533, APRIL 23, 2019.



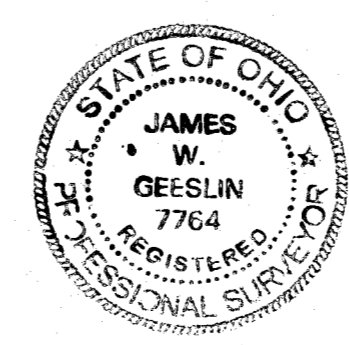
SURVEYOR'S CERTIFICATE

I DO CERTIFY THAT THIS SURVEY OF WRIGHT PLACE CONDOMINIUM PHASE ONE ACCURATELY REFLECTS THE LOCATION OF IMPROVEMENTS AND SURVEY MONUMENTATION FOUND OR SET.

James W. Geeslin

JAMES W. GEESLIN
 PROFESSIONAL SURVEYOR 7764

JULY 27, 2022



BASIS OF BEARINGS

THE BEARINGS CONTAINED HEREIN ARE BASED ON GPS OBSERVATIONS USING O.D.O.T. CORS NETWORK STATIONS, CONVERTED TO THE OHIO STATE PLANE NORTH ZONE, HORIZONTAL DATUM NAD83 (2011).

GEESLIN SURVEYING
 525 S. SECOND ST.
 COLDWATER, OHIO 45828
 Phone: (419) 678 - 7233
 Email: geeslinsurveying@gmail.com