

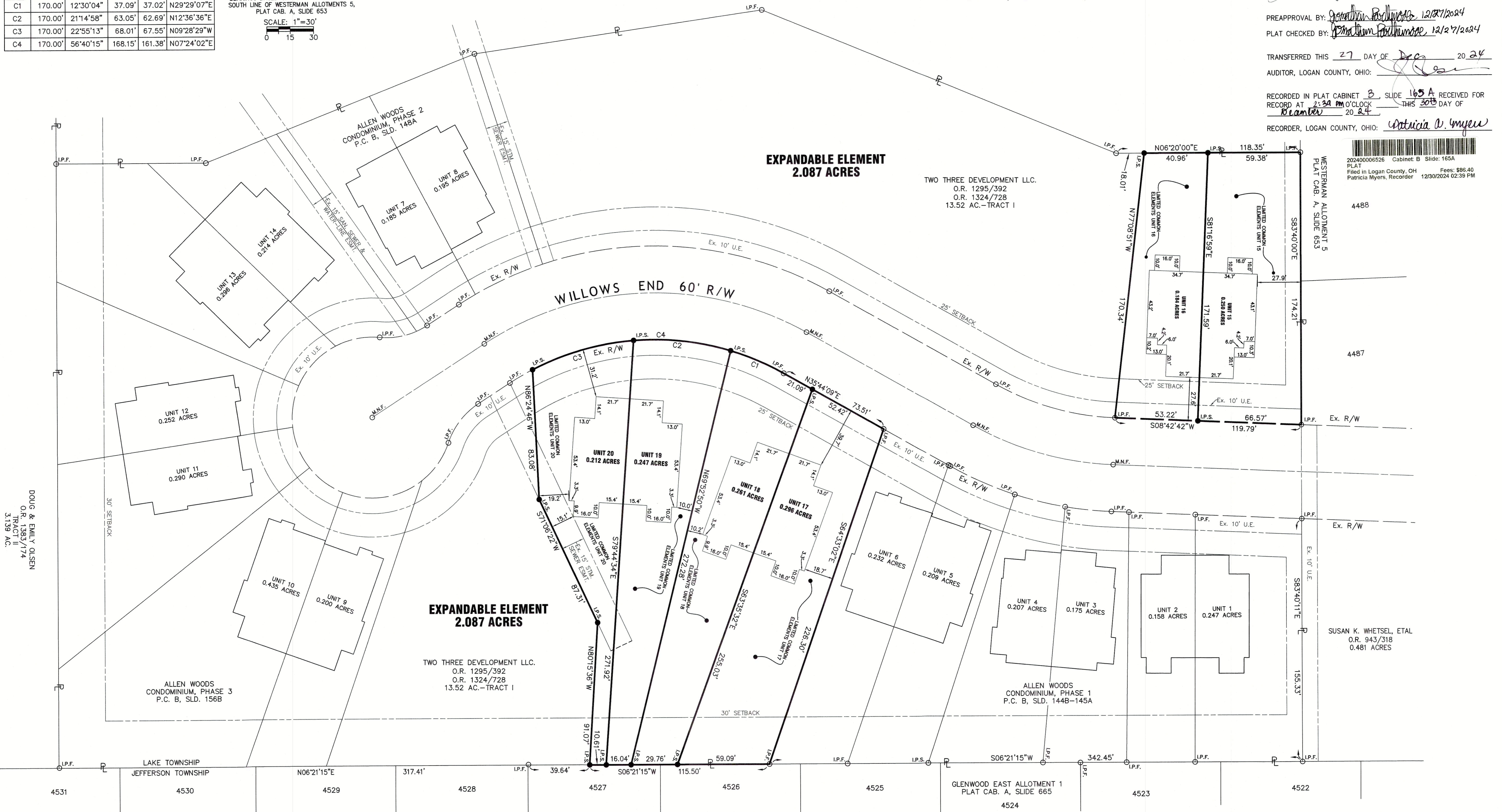
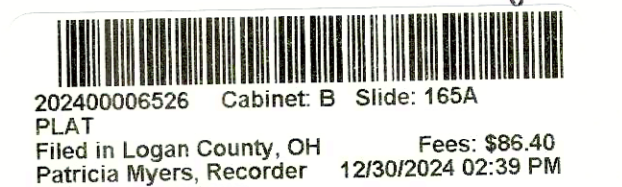
CURVE	RADIUS	Δ	LENGTH	CHORD	
				LENGTH	BEARING
C1	170.00'	12°30'04"	37.09'	37.02'	N29°29'07"E
C2	170.00'	21°14'58"	63.05'	62.69'	N12°36'36"E
C3	170.00'	22°55'13"	68.01'	67.55'	N09°28'29"W
C4	170.00'	56°40'15"	168.15'	161.38'	N07°24'02"E

BEARINGS BASED ON S83°40'00"E FOR THE SOUTH LINE OF WESTERMAN ALLOTMENTS 5, PLAT CAB. A, SLIDE 653  
 SCALE: 1"=30'  
 0 15 30

**ALLEN WOODS  
 CONDOMINIUM PHASE 4**  
 CITY OF BELLEFONTAINE, LAKE TOWNSHIP,  
 VMS 4478, LOGAN COUNTY, OHIO

**APPROVALS**

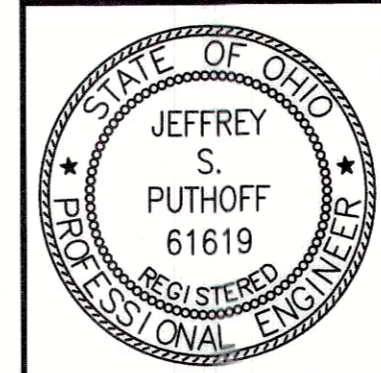
APPROVED THIS 27 DAY OF December 2024  
 BELLEFONTAINE CITY ENGINEER  
 PREAPPROVAL BY: Jonathan P. Williams, 12/27/2024  
 PLAT CHECKED BY: Jonathan P. Williams, 12/27/2024  
 TRANSFERRED THIS 27 DAY OF Dec 2024  
 AUDITOR, LOGAN COUNTY, OHIO: [Signature]  
 RECORDED IN PLAT CABINET B SLIDE 165A RECEIVED FOR RECORD AT 2:30 pm O'CLOCK THIS 30th DAY OF December 2024  
 RECORDER, LOGAN COUNTY, OHIO: Patricia D. Myer



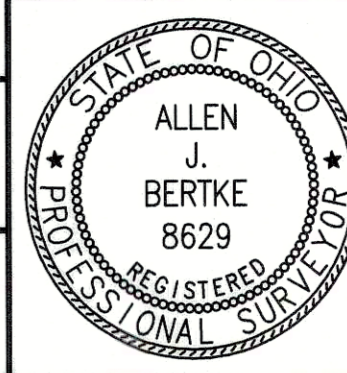
This Plat Plan of Allen Woods Condominium, Phase 4, and the attached drawings of the declaration, consisting of page 3 through 14, of the floor plans and elevation views of the buildings shown hereon, show insofar as graphically possible (1) the particulars of the buildings in the condominium, including but not limited to the layout, location designation and dimensions of each of the units therein, and (2) the layout, location and dimensions of the common elements and facilities, the limited common elements and facilities.

We the undersigned, being a Professional Engineer and a Professional Surveyor, hereby state that said drawings show the buildings as constructed, as graphically as possible and accurately reflect the location of improvements and recorded easements.

**LEGEND**  
 ● I.P.S. 5/8" X 30" REBAR W/CAP SET  
 ○ I.P.F. 5/8" IRON PIN FOUND  
 ○ M.N.F. MAG NAIL FOUND



Allen J. Bertke  
 JEFFREY S. PUTHOFF, P.E. #61619  
 DATE: 12/27/24  
Allen J. Bertke  
 ALLEN J. BERTKE, P.S. #8629  
 DATE: 12/27/24



**ChoiceOne**  
 Engineering  
 SIDNEY, OHIO 937.497.0200  
 LOVELAND, OHIO 513.239.8554  
 PORTLAND, INDIANA 260.766.2500  
 www.CHOICEONEENGINEERING.com

DATE: 10-28-2024  
 DRAWN BY: RMF  
 JOB NUMBER: LOGBEL190.3  
 SHEET NUMBER: 1 OF 1