

Surveyor's Office, Bellefontaine, Ohio, January 13<sup>th</sup>, A. D. 1859.

Piatt

This is to certify that on the 25<sup>th</sup> day of December, A. D. 1858, at the request of A. Sanders Piatt, of Monroe Township, of Logan County and State of Ohio; I, Henry C. Moore, County Surveyor, in and for said County, (being also a civil Engineer,) by means of a "Y" Level with a 20 inch telescope, in proper adjustment, did ascertain the difference of level between the top of a dam built across the creek of Mackachack, in said Township, by said Piatt in the Summer or fall of A. D. 1858 on the Eastern part of his land, and near the line of George Woots and Lewis Scaman's lands; and the bottom of the said creek of Mackachack at the line between the lands of said Piatt and Scaman; the bottom of said creek at another point between said dam and land line; and the top of a large rock-stone about three feet square, at a point marked thus "+",

Said stone being about 5 rods south west from where said land line crosses the creek, and about three rods south of the centre of the gravel pike.

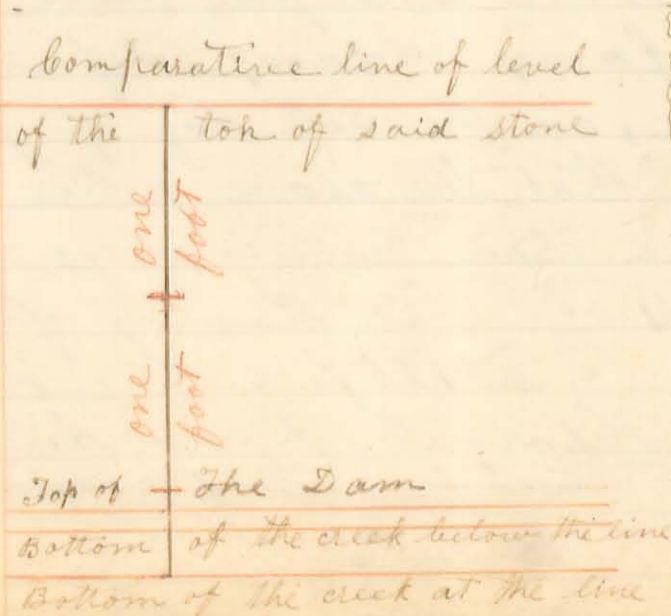
Dam & Stone  
Creek  
Stone  
Creek  
Dam & Creek  
Creek & Creek  
Dam & Creek

And do find the difference of level between the top of said dam, (on the low part, constructed of wood, over which the surplus or waste water flows,) and <sup>the top of</sup> said stone to be  $2\frac{113}{1000}$  feet; the stone being the higher.

The difference of level between the bottom of the said creek at said land line, and the top of said stone to be  $2\frac{462}{1000}$  feet; the stone being the higher. -- The difference of level between the top of said dam, and the bottom of the creek at the said line is  $\frac{345}{1000}$  of a foot; the dam being the higher.

The difference of level between the bottom of the said creek at the said land line, and the bottom a few rods below said line is  $\frac{25}{1000}$  of a foot; the latter being the higher. Thus showing that there is a pond three inches deep in the creek at the said land line. -- The difference of level between said dam and the bottom of the creek at said point below the land line is  $\frac{99}{1000}$  of a foot, (1 1/2 in. nearly) the dam being the higher.

Stephen Hannum, Rodsman



I hereby certify that the foregoing report is correct - Henry C. Moore, Co. Surv. Lo. Co. O. & a civil engineer

Survey No. 805

Mussulman }  
John }

Surveyors Office Bellefontaine Ohio January 25<sup>th</sup> A.D. 1859

In pursuance of the following notice, herunto attached, and by the request of John Mussulman, of Rushcreek Township of Logan County O., and agreeable to the Statute of Ohio, entitled "An act to enable the holders of Lands within this State to perpetuate testimony relative to their lands": I, - Henry C. Moore, County Surveyor of said County of Logan, proceeded on Thursday the Twentieth (20<sup>th</sup>) day of January A.D. 1859 to the corner between the lands of John Mussulman and Joel Thomas, in the North line of the land owned by Bonner Rollins and brothers, & in the line between Virginia Military Survey No's 9954 & 9955 in said Township of Rushcreek and I then and there took the depositions of John Burnes & John Rollins (which are herunto attached,) for the purpose of establishing the original location of said corner, according to said act, - Henry C. Moore, County Surveyor, of Logan County O.

Notice

John Mussulman }  
vs. }  
Joel Thomas }  
& James Adams }

Before H. C. Moore, County Surveyor of Logan County Ohio.

The said Joel Thomas & James Adams will take notice that on the 20<sup>th</sup> Day of January 1859 Between the hours of 10 o'clock A.M. and 4 o'clock P.M. Before Henry C. Moore, County Surveyor of Logan County Ohio, the Depositions of John Burnes and John Rollins &c. will be taken by me to be read in evidence, on the premises of the said John Mussulman for the purpose of establishing a corner between the said Mussulman and Joel Thomas and James Adams when and where you can attend and put interrogations if you see proper. Dated this 23<sup>rd</sup> day of December A.D. 1858

(Signed) John Mussulman

Acknowledgment of Notice

State of Ohio }  
Logan County }

I, S. S. - Personally appeared before me, the subscriber, County Surveyor in and for said County of Logan, Joel Thomas and James Adams, defendants named in the above notice, on the 20<sup>th</sup> day of January A.D. 1859, and acknowledged that the above notice was duly served upon them more than twenty days ago, Done in Rushcreek Township of said County of Logan on the 20<sup>th</sup> day of January A.D. 1859. - - -

Henry C. Moore, County Surveyor of Logan County O.

Test. of  
Oath of  
Deponents

State of Ohio }  
Logan County } S. S. — Personally appeared before me  
the Subscribers, County Surveyor in and  
for said county of Logan, John Humes and John Rollins,  
said persons of lawful age, and made solemn oath  
that they would testify to the truth, the whole truth, and  
nothing but the truth, in reference to the corner  
between the lands of John Musselman and Joel Thom-  
as, in the North line of Conner Rollins & brother's land,  
and in the line between Virginia Military Survey Nos.  
9954 & 9955, in Rushcreek Township of Logan County Ohio  
Done in Rushcreek Township of Logan Co. Ohio on this the 20<sup>th</sup>  
day of January A. D. 1859, Henry C. Moore, County  
Surveyor of Logan Co. Ohio

Deposition

Testimony of John Humes. - - - - -

1<sup>st</sup> Question

What do you know about the corner between the lands of  
John Musselman & Joel Thomas in the North line of  
the lands owned by Conner Rollins & Brother, & in the  
line between Virginia Military Survey Nos. 9954 & 9955 in  
Rushcreek Township of Logan County Ohio? - - -

Ans.

About the 15<sup>th</sup> of May A. D. 1845, Alexander Harbison  
established this corner for Mr. John Rollins & myself.

2<sup>d</sup> Question

What did Mr. Harbison plant at the place to mark the  
said corner?

Ans.

Alexander Harbison put a sugar Stake in the place,  
and afterwards John Rollins & myself put a White Oak  
Stake in the same hole the sugar stake was in.

3<sup>d</sup> Question

Do you know whether the Stake of which you <sup>speak</sup> was in the  
original marked line between said Survey, or not? -

Ans.

I think it was about in range with a row of marked  
line trees, which I understood to be the block line. - -

4<sup>th</sup> Question

How did the fence on the East line of the land that  
Mr. Thomas now owns correspond with those trees? - - -

Ans.

The fence stood a little to the West of the line trees.

5<sup>th</sup> Question

Can you now point out, or show me the place where  
the stake stood?

Ans.

Yes; I can point out the place. - - - - -

6<sup>th</sup> Question

Will you now show me the place? - - - - -

Ans.

(Turning up a stone he put his cane on the top of a stake)  
saying, "This is the place". - - - - -

7<sup>th</sup> Question

Did you own the land, that Mr. Thomas now owns, at the  
time that Mr. Harbison made the corner of which you speak?

Ans.

I did. - - - - -

8<sup>th</sup> Question

How do you know that that stake is at the corner of the  
land you then owned? - - - - -

Ans.

I know by information of Alexander Harbison John  
Rollins and Peter Sutton. - - - - -

2<sup>d</sup> Question Did you ever have the East line of the land you owned at that time, surveyed? - - - - -  
Ans. No. - - - - - (Signed) John Burnes

John Rollins' Testimony -

1<sup>st</sup> Question (By myself) What do you know about the corner between the lands now owned by John Mussulman and Joel Thomas in the North line of Bonner Rollins and Brothers, and in the line between Virginia Military Surveys Nos. 9954 and 9955 of Rushcreek Township, Logan Co. O.  
Ans. It was planted by Alexander Garbison, Surveyor, I think, about thirteen years ago, at my request; that is: I had him survey the line which was then between John Burnes and myself, now between my son & Joel Thomas, - - - - -

2<sup>d</sup> Question Was the corner then planted in the block line between said surveys? - - - - -  
Ans. Yes. - - - - -

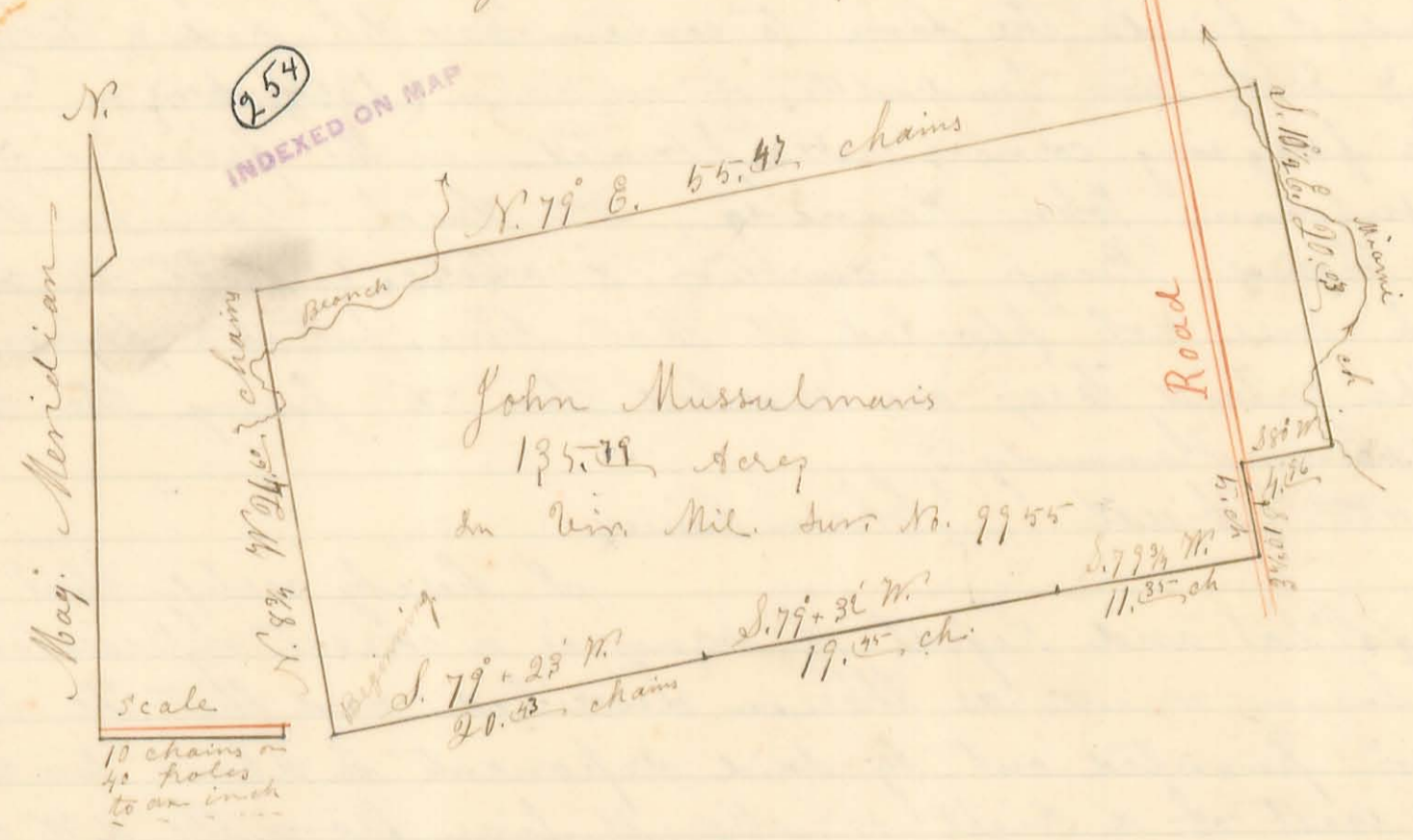
3<sup>d</sup> Question Can you now show me the place where Mr. Garbison established said corner? - - - - -  
Ans. I can. - - - - -

4<sup>th</sup> Question Will you now show me the place? - - - - -  
Ans. I will, (Turning up the same stone that John Burnes did, he put his finger on the same stake that said Burnes put his cane upon, and said) "This is the place", - - - - -  
- Cross examined by Joel Thomas -

1<sup>st</sup> Question Does that corner correspond with your deed? -  
Ans. I think it does, to the best of my recollection, Mr. Garbison commenced at three Beeches at the South East corner of Survey No. 9954 and run one hundred poles to this place and followed the old marked tree pretty well, the trees stood thick and were ~~not~~ marked well,  
(Signed) John Rollins

Surveyor's Certificate  
I, Henry C. Moore, County Surveyor of Logan County Ohio do hereby certify that the foregoing depositions of John Burnes and John Rollins were taken before me at the time and place designated in the foregoing notice, and that they were reduced to writing by me and signed by the respective deponents then and there, before me.  
Whereupon I planted a large Rock stone and 5 brick, in the place where the stake stood which said Burnes and Rollins pointed out to me, as spoken of in their depositions, from which a White or Saw Elm 10 In. Dia. bears N. 42<sup>d</sup> E. 54 links, - Done in the presence of John Burnes, John Rollins, Senr. John Kenneda, Wm. Hissel, John Mussulman, Joel Thomas, Jacob King, Benj. Leasewester, Henry Good, Bonner Rollins, Ashbay Rollins, John Rollins, Jr. John Rollins, & Jackson Rollins

In Testimony whereof I have hereto subscribed my name on this the 25<sup>th</sup> day of January A. D. 1859  
Henry C. Moore, County Surveyor of Logan Co. O.



Statement  
 Surveyor's Office Bellefontaine Ohio January 25<sup>th</sup> A. D. 1859  
 The above Plat is a representation of 135.39 Acres of land in Rushcreek Township of Logan County & State of Ohio being a part of Virginia Military Survey No. 9955; as surveyed by me, Henry C. Moore, the County Surveyor in and for said County of Logan on the 20<sup>th</sup> day of January A. D. 1859, at the Request of John Mussulman, for the purpose of establishing the lines and corners thereof, ascertaining the area contained therein; which I did in the following manner; To wit:

Survey  
 Beginning at the Stone and five brick, which I planted at the place designated in the depository hereunto attached; & from which a sour Elm 10 Ln. Dir. bears N. 42° E. 54 links; Run thence N. 8 3/4° W. 24.00 chains with the west line of said Survey No. 9955 (original call N. 12° W.; variation of bearing being 3 1/2° E.) crossing a small branch 3 times, (one at 18.00, at 18.00 & again at 21.00 chains) to a stone, which I planted in said Survey line from which a Lynx 24 Ln. Dir. bears N. 21° W. 78 links distant; Thence N. 79° E. 55.47 chains, crossing a Road (at a stone corner in the same) at 50.00 chains; to a 3 cornered Rock stone with 4 brick under & about it, from which a Black Walnut 8 Ln. Dir. bears <sup>N. 89 3/4°</sup> West 29 links, a Black Walnut one Ln. Dir. bears S. 70° W. 17 links; Thence S. 11 1/4° E. 20.00 (crossing a branch at 15.25 ch., & again at 17.50 ch.) to a yellow Rock stone & four brick which I planted in John Heneday's N. line; Thence S. 80° W. 4.25 chains to a Rock stone & two bricks, which I planted in the aforesaid Road, from which a Sugar 20 Ln. Dir. bears S. 61° W. 13 links, & a Black Walnut 12 Ln. Dir. N. 80° E. 82 links; Thence with said Road S. 10 1/2° E. 5 chains to a Rock stone, & 4 half bricks which I planted here, & marked a Sugar 15 Ln. Dir. N. 62° W. 81 links; Thence S. 78 3/4° W. 11.35 chains, to a Stone & two bricks at Rollins' Dir. corner from which a Walnut bush Dir. bears S. 73° 50' W. 9 1/2 links

to a Birch 14 Ln. Dir. bears N. 46 3/4 E. 33 links: Thence with Rollins N. line S. 79° + 36' W. 19.35 chains to a stone near an Ash: Thence S. 79° + 28' W. with Rollins N. line 20.43 chains to the place of beginning.

And I find the same to contain one hundred & thirty five acres, & sixty two hundredths of an acre = (135.62/100 acre) - - - -

The foregoing corners were planted in the presence of John Mussulman, John Kennedy, Wm. Gissel, Conner Rollins Joel Thomas, Benj. Dearwester, & others, (except the last two, which were not planted at that time, but at a former time)

The witness trees are marked thus "X" facing the corner.

John Kennedy }  
Wm. Gissel } Chain carriers

cert.

I hereby certify that the foregoing Plat and Report of survey is a correct representation of the survey made as therein described, and that the "Beginning corner" pointed out by said deponents is about two & a half poles west of a right or straight line from the S.W. corner of said survey No. 9955, to the first marked line trees which I could recognize as "Original" in the west line of said survey, which were several in number from 25 ch. to 40 ch. N. of S.W. Beginning corner, & about 50 ch. to 65 ch. N. of the S.W. corner of said survey.

Henry C. Moore, County Surveyor of L. Co. O.

Frederick Hustenborder

Survey No. 806 Surveyor's Office Bellefontain Ohio  
March 15<sup>th</sup> A. D. 1859

The Plat on the opposite page represents the East Fractional half of Fractional Section No. 24 of Town No. 3 & Range No. 13 E. N. R. And the North East quarter of section No. 23 of the same Town & Range situated in Miami Township of Logan Co. O., as surveyed by me, Henry C. Moore, County Surveyor in and for said County, assisted by James B. McLaughlin an experienced land surveyor in said County, which I did for, & by the request of Frederick Hustenborder, on the 15<sup>th</sup>, 21<sup>st</sup>, & 22<sup>nd</sup> days of January A. D. 1859 - - - -

Table showing the Bearing & distance from each corner or station to the next. Distances given both in chains & poles

| A. to B. | Bearing     | Chains | Poles   | Station  | Bearing      | Dist. in Ch. | Poles   | Station  | Bearing      | Chains | Poles   |
|----------|-------------|--------|---------|----------|--------------|--------------|---------|----------|--------------|--------|---------|
| A. to B. | N. 1 E.     | 33.50  | 134     | A. to B. | N. 88 1/2 W. | 39.35        | 157 3/4 | B. to C. | N. 44 1/2 W. | 3.00   | 12      |
| A. to b  | Do          | 30.    | 120     | B. to C. | Do.          | 32.50        | 131 1/2 | C. to D. | West         | 1.25   | 5       |
| b. to c  | S. 67 W.    | 43.00  | 172 1/2 | C. to D. | N. 13 W.     | 86 links     | 3 3/4   | D. to E. | N. 15 E.     | 24.38  | 97 1/2  |
| b. to d  | S. 1 W.     | 13.32  | 53 1/2  | D. to E. | East         | 3.           | 12      | E. to F. | Do.          | 40.00  | 160 1/2 |
| c. to d  | Do          | 12.30  | 49 1/2  | E. to F. | N. 13 1/2 W. | 3.00         | 12 1/2  | F. to G. | Do.          | 15.00  | 60 1/2  |
| d. to A  | S. 87 E.    | 39.00  | 156 1/2 | F. to G. | N. 39 W.     | 5.00         | 22      | G. to H. | S. 88 1/2 E. | 7.15   | 28 3/4  |
| A. to C  | S. 1 1/2 W. | 40.00  | 161 1/2 | G. to H. | N. 20 W.     | 6.           | 24      |          |              |        |         |

The Fractional 1/2 of Fractional Sect. No. 24 contains 100.36 acres: The N. E. 1/4 of Sect. 23 contains 160.00 acres: The part owned by Fred. Hustenborder contains 150.00 acres.

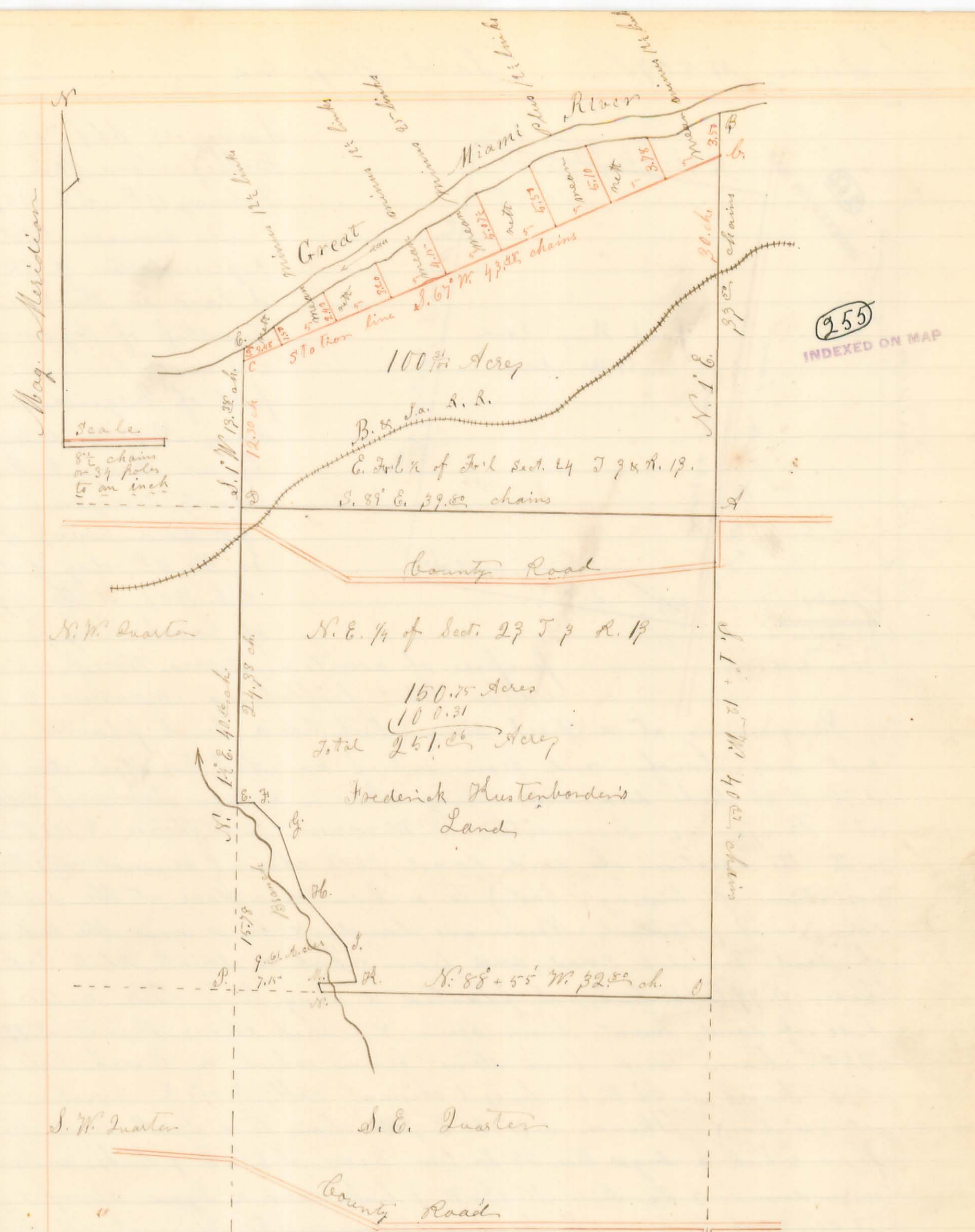
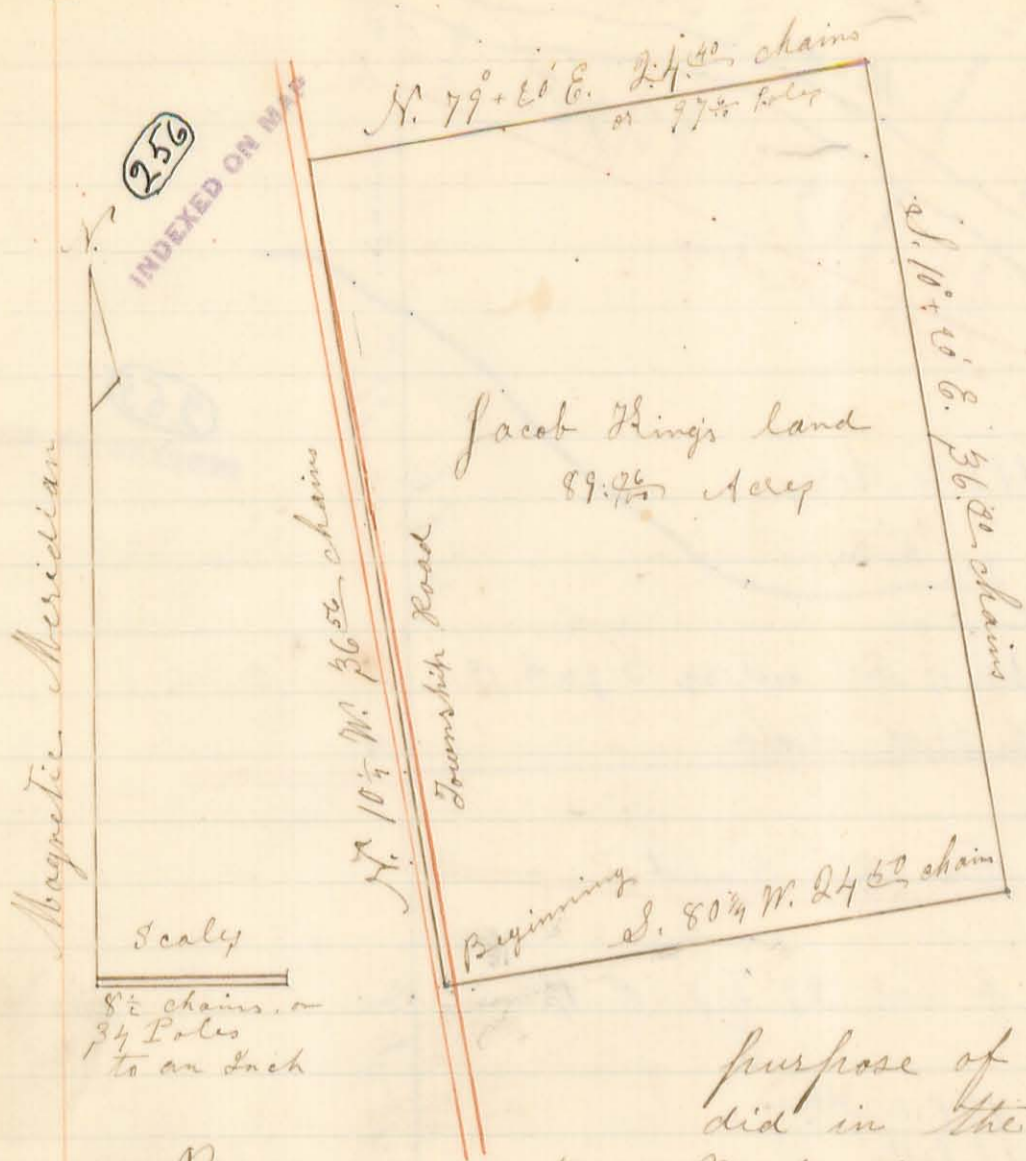


Table showing the monuments at the different corners

|   |  |
|---|--|
| at A. a long rock stone with brick under it       | C, F, G, H, I, M. = Stone & brick at each              |
| a Beech 15 Ln Dir. N. 75° E. 52 links             | J = Stone, brick, Hickory & Ln. Dir. N. 3° E. 22 links |
| Lronwood. 4 Ln Dir. N. 35° E. 33 links            | K. Stone, brick  |
| W. Ash Stump 16 Ln Dir East 24 links              | L. Stone with brick under it & a                       |
| W. Oak Stump 30 Ln Dir N. 27° W. 25 links         | (original) Hickory 16 Ln. Dir. N. 2° E. 20 links       |
| at B. Stake & Sour Elm 14 Ln. Dir South 165 links | N. Lump Ash 7 Ln. Dir. N. 59 3/4° E. 62 Ln             |
| C = Stone & Stake =                               | O. 8 Ln. Dir. S. 62° W. 57 links                       |
| D. = Lime Stone with brick under it               | P. Stone & 3 brick bats                                |
| Mulbury 10 Ln. Dir. S. 66° E. 75 links            | Q. Sugar 10 Ln. Dir. N. 57° E. 14 links                |
| Adam Beer 3                                       |  |
| Thomas A. Pool 3                                  |  |

I hereby certify that the foregoing Plat and report of survey is correct - Henry C. Moore, County Surveyor of Logan County Ohio



Surveyors Office  
 Bellefontaine Ohio  
 February 19<sup>th</sup> A.D. 1859

The annexed Plat is a Representation of 89.06 acres of land in Rushcreek Township of Logan County & State of Ohio; being a part of Virginia Military Survey No. 9954, as surveyed by me Henry B. Moore County Surveyor in and for said County of Logan on the 5<sup>th</sup> day of February A.D. 1859, at the request of Jacob King, for the

purpose of ascertaining the area thereof, which I did in the following manner: to wit:

Beginning at a Rock stone which has a brick planted by the west side thereof, and from which an Ash tree 20. In. Dir. bears S. 75° W. 26 links, said stone being also in a new Township Road at Benjamin Dearwesters N.W. corner; Run thence N. 10 1/2° W. nearly with the direction of said Road 36.50 chains, (original call. N. 10 1/2° W., variation of bearing 1/4 East) to a burnt lime stone at the south west corner of Samuel Newman's land; & in or near the East side of said Township Road, and from which a small White Oak bush bears N. 79° E. 66 1/2 links; I planted a long lime stone by the South side of said burnt lime stone, & a brick also; Thence N. 79° 20' E. 24.00 chains to a lime stone from which a Beech tree 24. In. Dir. bears S. 82° W. 7 1/2 links (original call, N. 79° E., variation, 10 West-ly variation) Thence S. 10° 20' E. 36.50 chains to a small lime stone from which a sugar tree 22 In. Dir. bears S. 20 1/2° E. 9 links; and a Ironwood (now down) 3 In. Dir. N. 63 1/2° W. 9 links; and a Sycam Stump 5 In. Dir. S. 85 1/2° W. 19 links; (all bearing corner marks) (original call on this line 1/2 South 10 1/2 East; variation, 10 East-ly variation) Thence S. 80 1/2° W. 24.50 chains to the place of beginning, (original call, S. 78 1/2° W.; variation 3/4 West.) And I find the same to contain Eighty nine acres, & Seventy six hundredths of an acre - (89.06 Acres)

Benjamin Dearvester }  
 John Kennedy } Chain carriers

Done in the presence of the chain men  
 Jacob King, Joel Thomas, & Henry Good

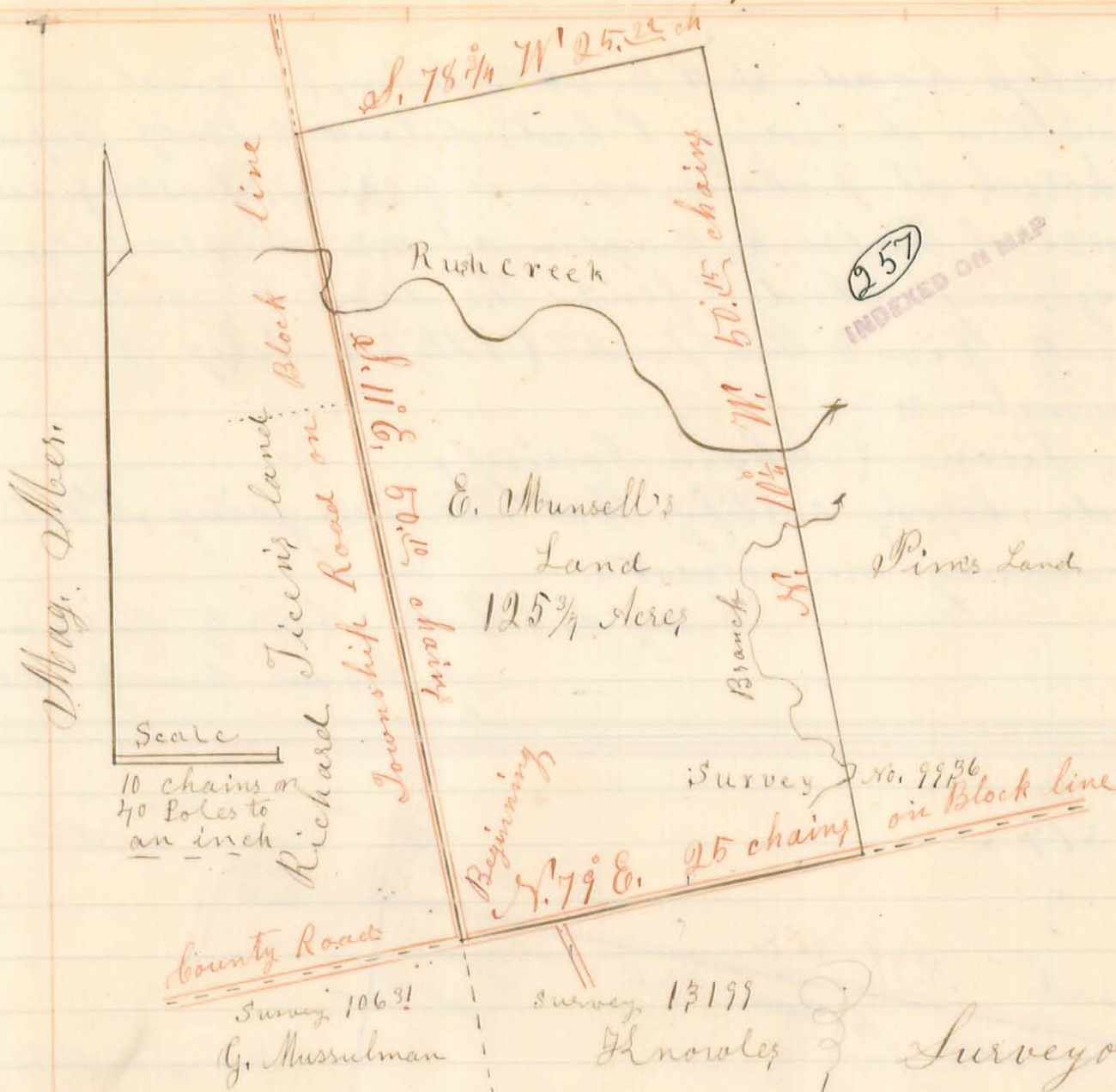
I hereby certify that the foregoing plat and report of survey are correct.

Henry B. Moore, County Surveyor of Logan County Ohio

Survey

Area





Surveyor's Office Bellefontaine  
 March 16<sup>th</sup> A.D. 1859

The above Plat is a representation of 125 3/4 Acres of land in Rushcreek Township of Logan County and state of Ohio; being a part of Original Virginia Military Survey No. 9936, in the name of James Berwick; as surveyed by me, Henry C. Moore, County Surveyor in and for said County, on the 10<sup>th</sup> day of March A.D. 1859; at the Request of Ephraim Munsell, on the premises; for the purpose of establishing the lines & corners thereof, and ascertaining the number of acres contained therein; which I did in the following manner; to wit;

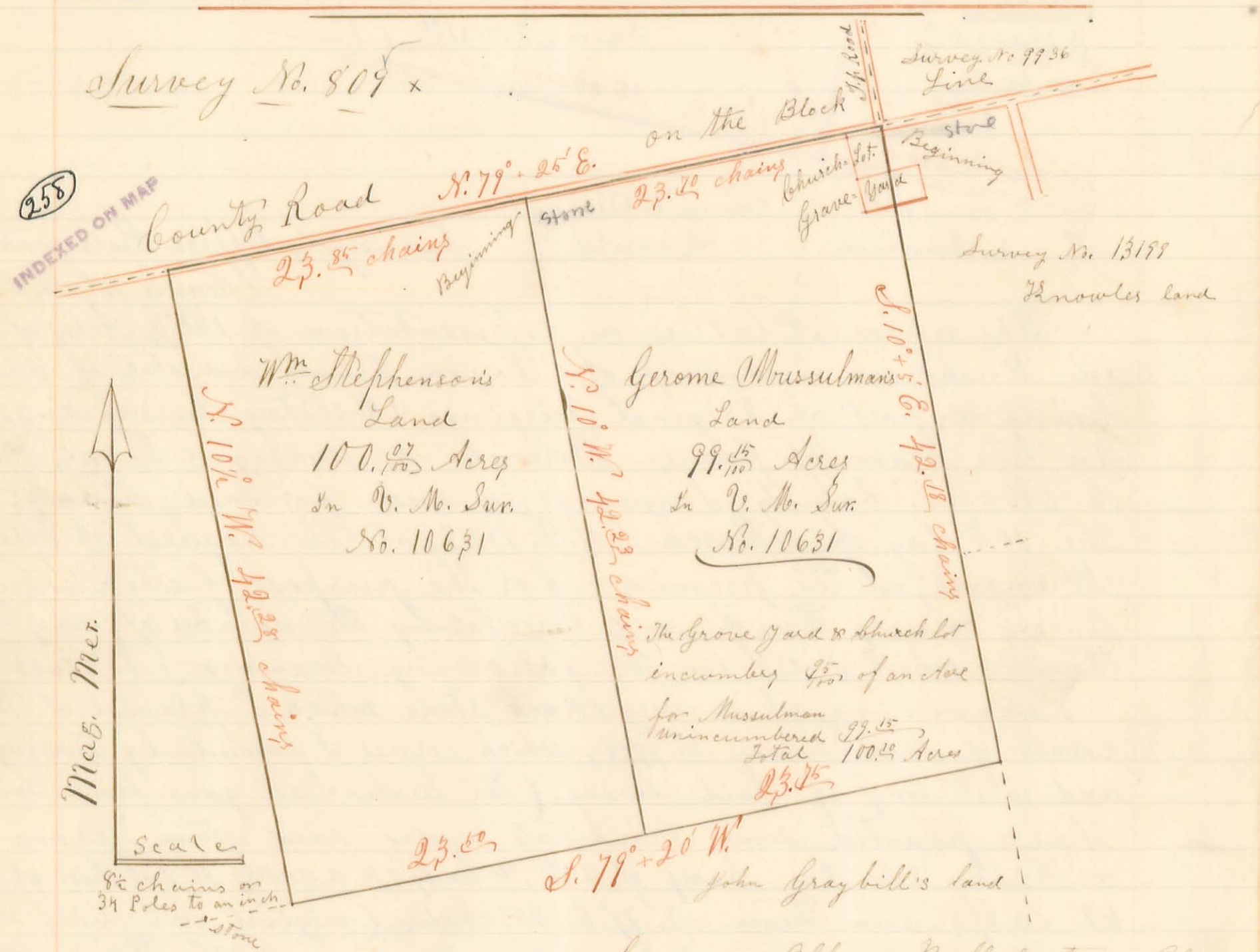
Beginning at a large rock stone which I planted at the S.W. corner of said Survey No. 9936, which corner I found by tracing South and west lines of said Survey, (the timbers all gone from said corner) I also planted some brick-bats under said stone, from which a Hickory 8 Ln. Dir. bears S. 2 W. 36 links; & a cherry 10 Ln. Dir. S. 45 E. 62 links; Run thence N. 79 E. 25 chains, (original call N. 78 E. 25 chains; variation of bearing is 1 E.; distance the same), with the south line of said Survey, & a county road, to a large Rock stone with a brick under it, which I planted in said South line of the Survey & county road; Thence N. 10 1/4 W. 50.15 chain (original call N. 12 W. 50 chain; variation of bearing 1 3/4 East; distance 15 links longer) crossing a small branch at 20.15 chains, & Rushcreek at 25 chains, to a Sugar & a Beech, where I planted a small square lime stone with a brick under it, & from which a Sugar 12 Ln. Dir. bears S. 87 1/2 W. 11 links distant, & a Beech 6 Ln. Dir. S. 59 1/2 E. 5 links; Thence S. 78 3/4 W. 25.22 chains (original call S. 78 W. 25 chains; variation of bearing 3/4 E.; distance 22 link longer) to a large square Lime stone which I planted with a brick under it, in the west line of said Survey No. 9936, from which a Beech 10 Ln. Dir. bears N. 65 1/2 W. 36 links; Thence with the West line of said Survey, 9936

and a Township Road S. 11° E. 57.42 chains, (original call S. 12 E. 50 chains, variation of bearing 1° East, distance 10 links longer) crossing Rushcreek at 7 chains, again at 9 chains, passing nearly with the course of the creek, & again at 10.25 chains (or 43 poles) to the place of beginning. And I find the same to contain one hundred twenty five & three fourths (125 3/4) Acres of land,

John Rumer & Richard Ticeu } Chain barriers

I do hereby certify that the foregoing Plat and Report of Survey are correct.

Henry C. Moore, County Surveyor of Logan County Ohio



Surveyor's Office Bellefontaine Ohio  
March 16<sup>th</sup> A.D. 1859

The above Plat is a representation of 200<sup>00</sup> Acres of land in Rushcreek Township, of Logan County Ohio; being a part of original Virginia Military Survey No. 10631 in the name of Duncan McArthur; as Surveyed by me Henry C. Moore, County Surveyor in and for said County; on the 11<sup>th</sup> day of March A.D. 1859; at the request of Gerome Mussulman & Wm Stephenson, on the premises, for the purpose of establishing the lines & corners thereof; and ascertaining the number of Acres contained therein; which I did in the following manner: to wit: —

Beginning at a large rock stone & a hick, at the North East corner of said Survey No. 10631 from which a Hickory & Linc. Dirr, bears S. 79° 36' E. 36 links distant, and a hick. tree 10 links distant

Thence with the East line of said Survey, S. 10° + 5' E. 42.<sup>28</sup> chains, (original call, being S. 12° E. 41.<sup>52</sup> chains; variation of bearing is 1° + 55' East, distance 68 links longer) to 3 Beeches & a Sugar tree, where I planted a lime stone 34 inches long, & from which I also marked a Beech (thus "X") 15 Ln. Dir. bearing N. 46° W. 8 links, a Beech 15 Ln. Dir. S. 11° E. 16 links; a Beech 18 Ln. Dir. S. 84° E. 19½ links; & a Sugar 20 Ln. Dir. N. 10° E. 17 links: —

Thence S. 79° + 20' W. 23.<sup>25</sup> chains, (original call, S 80° W. 24 chains, variation of bearing 40' West, distance 25 links less) to 2 Beeches & a Sugar, where I planted a Slim flinty Stone, & marked a Beech 22 Ln. Dir. S. 9° E. 9 links; a Beech 22 Ln. Dir. N. 66½ E. 14 links; a Sugar, 30 Ln. Dir. N. 53½ W. 32 links. Thence N. 10° W. 42.<sup>28</sup> chains (original call, N 10° W. 41.<sup>52</sup> chains, no variation of bearing, distance 28 links less,) to the North line of said Survey No. 10631, in a county road, where I planted a flat lime stone, with a brick under it; Thence with said Survey line & county Road N. 79° + 25' E. 23.<sup>20</sup> chains to the place of beginning, (original call, N. 78° E. 24 chains, variation of bearing is 1° + 25' East, distance 30 links less,) And I find the same to contain One Hundred  $\frac{87}{100}$  Acres, in which is a church lot, & part of a Grave Yard including  $\frac{95}{100}$  of an Acre, leaving  $99\frac{15}{100}$  Acres unincumbered

William  
Stephenson's  
Land

3 Beginning at a flat lime stone & brick, in the North line  
3 of said survey No. 10631 & a county road, at Jerome Mussulman's  
3 N. W. corner, Thence with said Mussulman's W. line S. 10° E. 42.<sup>28</sup>  
chains, (original call S. 11° E. 42.<sup>52</sup> chains, difference of bearing 1° East, distance  
27 links less,) to a Slim flint sand stone at sd Mussulman's S. W.  
corner from which a Beech 22 Ln. Dir. bears S. 9° E. 9 links, dist.  
a Beech 22 Ln. Dir. N. 66½ E. 14 links; a sugar 30 Ln. Dir. N. 53½ W.  
32 links; Thence S. 79° + 20' W. 23.<sup>50</sup> chains (original call, S. 77° W. 23.<sup>52</sup> chains,  
variation of bearing 20' E. distance the same) to a sugar stone, from  
which a sugar 16 Ln. Dir. bears N. 68½ W. 10 links, a Lynn 16 Ln. Dir.  
S. 53½ W. 31 links; a Beech 20 Ln. Dir. N. 5° W. 45 links; Thence N. 10° W.  
42.<sup>28</sup> chains, (original call N. 11° W. 42.<sup>52</sup> chains, variation of bearing is  
1° East, distance 22 links less, or shorter,) to a small square lime  
stone, two feet long, which I planted in the aforesaid county road  
& N. line of survey 10631, with some brick bats under it, & from  
which I marked a forked Walnut, each fork 5 Ln. Dir., S. 85° E.  
100 links, a Walnut 10 Ln. Dir. S. 89° W. 181 links, & a cherry tree  
15 Ln. Dir. S. 10° E. 129 links; Thence with said North line of  
survey & Co. Road, N. 79° + 15' E. 23.<sup>85</sup> chains to the place of beginning  
(original call N. 78° E. 23.<sup>52</sup> chains, variation of bearing is 1° + 25' East,  
distance is 35 links longer) And I find the same to contain  
One hundred  $\frac{87}{100}$  Acre (100.<sup>20</sup>) —

Done in the presence of, Jerome Mussulman, William  
Stephenson,

John Rumer &  
Richard Tice. } Chain Men

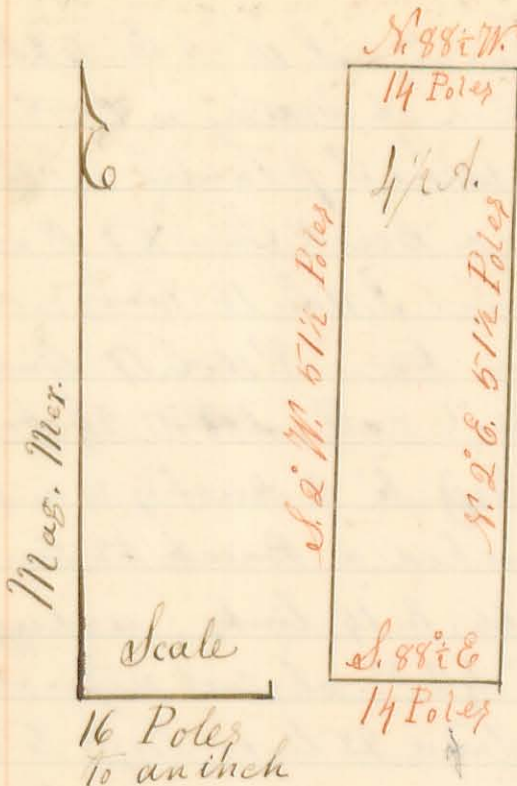
I hereby certify that the foregoing Plat and report  
of survey are correct: — Henry C. Moore, County Surveyor  
of Logan County Ohio

Survey No. 810

Frederick Fiveshillings

Surveyor's Office Bellefontaine Ohio  
April 13<sup>th</sup> A.D. 1859

INDEXED ON MAP  
559



The annexed Plat is a representation of 1/2 Acre of land in the S.E. corner of Section No. one (1), of Town No. three (3), and Range No. 14 E. M. G. M. R., as Surveyed by me, Henry C. Moore, County Surveyor of Logan County Ohio, on the day of the above date, for, and by the request of Frederick Fiveshillings, for the purpose of establishing the ~~the~~ lines & corners thereof; which I did in the manner following: to wit;

Beginning at the S.E. corner of said Section No. 1, of Town No. 3 and Range No. 14, where I planted a Stone & 6 pieces of brick from which a White Oak 2 1/2 inches in diameter bears N. 62 W. 17 1/2 links (being an original witness, & by which I found the corner; the other witness being gone) Run thence with the East line of the section, N. 2 E. 5 1/2 Poles to a stake in a ditch in a prairie; thence S. 88 1/2 W. 14 Poles to a stake in the prairie; thence S. 2 W. 6 1/2 Poles to a stone & 5 pieces of brick which I planted in the South line of the Section, & ~~from~~ in a County Road; thence with said South line, & County Road S. 88 1/2 E. 14 Poles to the place of beginning; & I find the same to contain Four Acres & one half of an acre.

Abn. Mc Nett & Frederick Fiveshillings } Chain barrier, by the mutual agreement of each other, they being the parties interested in this survey, and whose interests are converse to each other. — — —  
I hereby certify that the foregoing plat, and report of survey is correct. — — —  
Henry C. Moore, County Surveyor of Logan County Ohio —

Survey No. 811

Surveyor's Office Bellefontaine O. June 2<sup>nd</sup> A.D. 1859

The Plat on the next (13) page is a representation of two lots of land in Pleasant Township of Logan County Ohio; being a part of the East half of Section No. nine (9) of Town No. two (2) & Range No. 14, E. G. M. R., as surveyed by me, Henry C. Moore, County Surveyor in and for said County, on the 15<sup>th</sup> day of April A.D. 1859, at the request of Robert Parish & Andrew Coulter for the purpose of establishing the lines & corners thereof, and ascertaining the number of Acres contained therein; which I did in the manner as follows: to wit;

Robert Parish & Andrew Coulter

Beginning at a Stake at the South East corner of said Section No. 9, from which a Hickory (original witness) now 22 inches in Diameter bears N. 76 E. 44 links, & a W. Oak 7 1/2 in. S. 37 1/2 W. links. Thence with the South line of said Section N. 88 1/2 W. 32.35 chains to a stone

Survey 8/11 continued



in a prairie, near the south bank of a ditch, & S.E. corner to John Ester's land. x Thence with his east line  $N. 1 \frac{1}{2} E.$  23.80 chains to a stone in the prairie; Thence  $S. 88 \frac{1}{2} E.$  34.25 chains to a Stake in the East line of said section, being also in a County Road; Thence with said line (of section) & Co. Road  $S. 1 \frac{1}{2} W.$  23.80 chains to the place of beginning; and I find the same to contain Eighty one Acres & fifty one hundredths of an acre = (81.5)

Charles Coulter's land

Beginning at the Stake in the East line of said section No. 9, at Robert Parish's N.E. corner; Run thence with Parish's South line,  $N. 88 \frac{1}{2} W.$  34.25 chains to a stone at Parish's N.W. corner, & in John Ester's East line; Thence with said Ester's E. line  $N. 1 \frac{1}{2} E.$  16.50 chains to a stone at said Ester's S.E. corner, in Wm. Mc Mullin's S. line, from which a forked maple (4 trunks from the same root) bears  $N. 87 \frac{1}{2} E.$  58 links; Thence  $S. 89 \frac{1}{2} E.$  11.66 chains to a stone from which a wild cherry 9 Lu. Dir. bears  $S. 79 \frac{1}{2} E.$  17 links; Thence  $N. 1 \frac{1}{2} E.$  5.35 chains to a stone; Thence  $N. 1 \frac{1}{4} E.$  6 chains to a stone in the Bellefontaine & Sidney Road; Thence with said Road  $S. 83 \frac{1}{2} E.$  8.00 chains to a stone; Thence  $N. 76 \frac{1}{2} E.$  11.40 chains with said Road to a stone in the East line of said section, & in the crossing of two County Roads, near a School-house; Thence with the East line of said section,  $S. 1 \frac{1}{4} W.$  15.00 chains, or (-60 Poles) to a Stake at the corner between the N.E. & the S.E. quarters of said Section No. 9, from which a W. Oak bears  $N. 6 \frac{1}{4} E.$  25 links; (Original witness) Thence  $S. 1 \frac{1}{2} W.$  16.45 chains, (continuing with the East line of the section) to the place of beginning, and I find this piece to contain Eighty one Acres & eighty one hundredths of an acre = (81.81), including a small lot for a school house. The two pieces together contain 163.35 Acres of land x

Done in presence of Wm M Mullen, John Carter, Robert Parish, Andrew Coultis, Charles Coultis and the chain carrier, viz: Jonathan Rea & David Hannah } I do hereby certify that the foregoing Plat, & Report of Survey, are correct; Henry C. Moore, Co. Surveyor of Logan Co Ohio.



Surveyor's Office Bellefontaine Ohio May 16<sup>th</sup> A.D. 1859

The above Plat is a Representation of 170.52 acres of land in Lake & Rushcreek townships of Logan County Ohio; being a part of Virginia Military Survey's No's 3322 in the name of Layton Yancey, & 3015925 in the name of Surveyed by me, Henry C. Moore, County Surveyor in and for said County, on the 19<sup>th</sup> & 20<sup>th</sup> days of April A.D. 1859, at the request of Christopher Mc Gill & others, for the purpose of Establishing the lines & corners thereof, and especially the western line, being the East line of Richard Dickinson's land; and for subdividing said 170.52 acres into three parts, for the three joint purchasers, viz: Christopher Mc Gill, George Taylor, and Tobias Mc Benton Mc Gill; which I did in the following manner: to wit: —

I located the East & South lines by tracing the Original marked lines on the timbers; and the west line having been in dispute, I located it on a line agreed upon by & between the parties, in interest; viz: Richard Dickinson, Christopher Mc Gill, and George Taylor; the South line being the centre of the B. & O. R.R. ground

I then subdivided as follows: to wit: — Beginning at a stone in the East line of said Survey No. 3322 at the S.E. corner of said 170.52 acres, which

Survey No. 812 continued,

an Ash 30 inches in Diameter bears N 7 1/2 E 27 links, a Beech 18 Ln Dir. N. 30 W. 21 links, & a White Thorn 3 Ln Dir N. 13 E 22 links;

Thence S. 80 3/4 W. 40.28 chains to a Beech 20 Ln Dir. from which an Ironwood 10 Ln Dir bears S. 79 1/2 E. 15 links, a stone & brick N. 80 3/4 E. 20 links; Thence N. 9 1/4 W. with Dickinson's East line, 13.32 chains to a stone & brick from which another stone & brick bears N. 80 3/4 E. 37 links; Thence N. 80 3/4 E. 40.28 chains to a stake in the East line of survey 3322, a Sugar 14 Ln Dir. S. 80 W. 8 links; Thence with the East line of said survey, S. 9 1/4 E. 13.28 chains to the place of beginning, containing 53.65 Acs.

George Taylor Land 53.65 A.

Beginning at a stake in the East line of said survey No. 3322, at Christopher McGilly N.E. corner from which a Sugar 14 Ln Dir bears S. 80 W. 8 links; Thence with the East line of the Survey N. 9 1/4 W. 13.32 chains to a stone in said line from which a Sugar 10 Ln Dir bears N. 6 1/2 E. 14 links; Thence S. 80 3/4 W. 40.28 chains to a long lime stone & brick ~~from~~ in said Rich. Dickinson's East line, from which another stone & brick bears N. 80 3/4 E. 60 links. Thence S. 9 1/4 E. with Dickinson's East line, 13.32 chains to a stone & brick at Christopher McGilly N.W. corner, from which another stone & brick bears N. 80 3/4 E. 37 links; Thence with said Ch. McGilly South line N. 80 3/4 E. (crossing a branch at 11.00 ch) 40.28 chains to the place of beginning, containing 53.65 Acres.

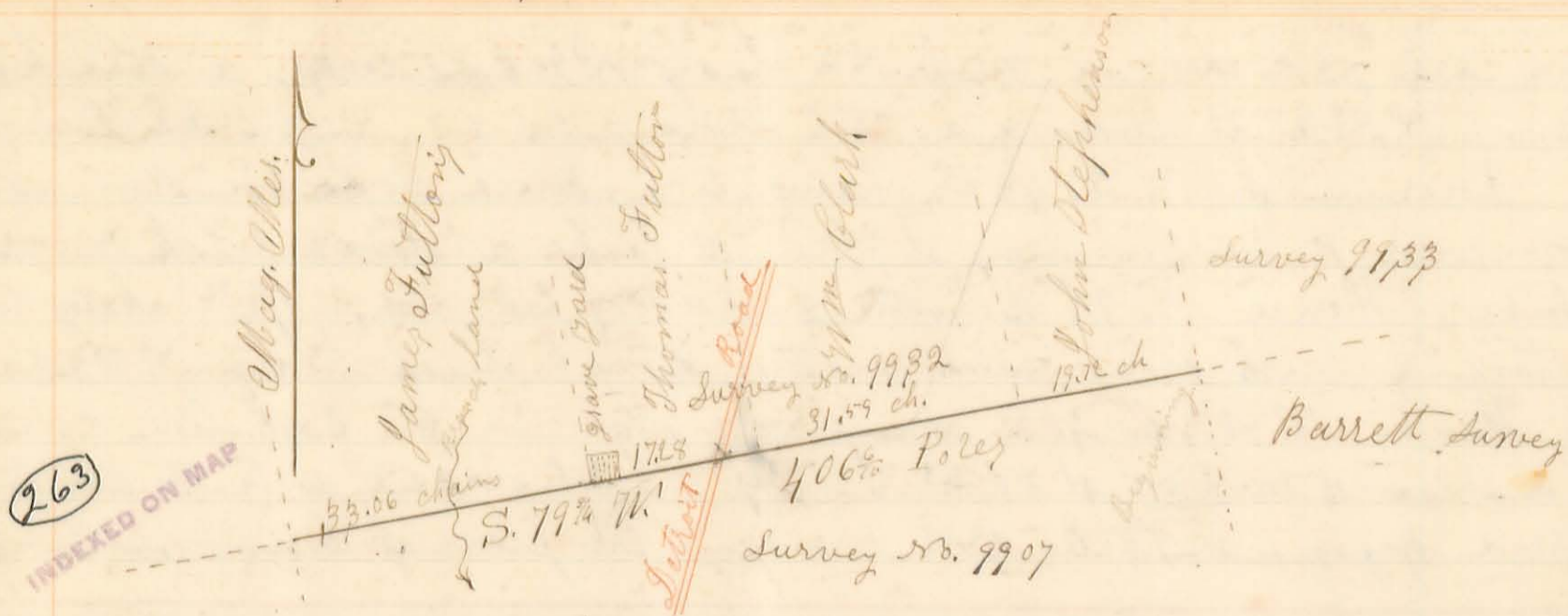
Tobias Benton McGilly Land 63 1/2 A.

Beginning at a stake in the East line of said survey No. 15925, where it intersects the south iron or "Rail" of the B. & Ia. R.R. track, as it now is. Thence with the East line of said Survey 15925 & 3322, South 9 1/4 E. 30.25 chains to a stone at the N.E. corner of George Taylor's land, a Sugar 10 Ln Dir N. 6 1/2 E. 14 links; Thence with said Taylor's N. line South 80 3/4 W. 40.28 chains, to a long lime stone & brick at said Taylor's N.W. corner, & in Dickinson's East line, another stone & brick N. 80 3/4 E. 60 links; Thence N. 9 1/4 W. 80 links to a stake by the South Iron, or "Rail" of the B. & Ia. R.R.; Thence with said South Iron Rail, of said Rail Road track N. 45 3/4 E. 50.00 chains, to the place of beginning; containing 63 1/2 Acres of land, 3 1/4 of which are covered & incumbered by the grounds of said Rail Road & Done in Presence of George Shotts, John L. Stanfield Richard Dickinson & his youngest son, the aforesaid owners of the subdivisions, and the chain men - viz:

Peter Perrine }  
Isaac Pratt } C.C. ?

I hereby certify the foregoing Plat, and Report of Survey are correct.

Henry C. Moore, County Surveyor, of Logan County West



Surveyor's Office Bellefontaine Ohio April 14th A.D. 1859

The above Plat is a representation of the "Block line" between Original Virginia Military Surveys Nos. 9907 & 9932, in Rush creek Township, of Logan Co. Ohio, as Surveyed by me, Henry C. Moore, County Surveyor of said County, on the thirtieth (30) day of March A.D. 1859 at the request of James Fulton & others, for the purpose of establishing said line, the corner of said surveys at the west end of said line, and three corners within said line, which I did as follows,

Beginning at a Stone at the East end of said line, run thence S. 79 3/4 W. 406 1/2 Poles, (crossing the Detroit, or Kenton Road at 53 1/2 chains, & a branch at 8 1/2 chains,) to the westerly corner between said surveys, where I planted a Stone, from which a Hickory Stump 20 Ln. Dir. bears N. 26 E. 24 links, & a Beech Stump 12 Ln. Dir. S. 11 W. 34 links, (both Stumps of Original witness or corner trees,) a Hickory 10 Ln. Dir. N. 52 E. 99 links & a Bur Oak 8 Ln. Dir. S. 41 E. 59 links:

The Original call for this line is S. 78 W. 400 Poles, The variation of bearing is 1/4 East: the line overruns in length 6 1/2 Poles &

Set a stone at 68.59 chains from the beginning by the side of a Sugar Stump, near the S. W. corner of a Grave Yard, as the corner between James & Thomas Fulton, I set a stake at 50.21 chains from the beginning, as the corner between Thomas Fulton & Wm Clark, from which an Ironwood 6 Ln. Dir. bears N. 9 E. 73 links, & a buckeye 7 Ln. Dir. N. 21 W. 93 links & — Set a stone at 19.25 chains from the beginning, as the corner between William Clark & John Stephenson, from which a white Hickory 15 Ln. Dir. bears North 50 West 105 links, Done in the presence of James, Fulton, Thomas Fulton, William Clark, John Stephenson, John Elsey, & others &

Wm Clark }  
John Elsey } Chain carriers }

Henry C. Moore Co Surveyor  
of Logan Co Ohio

Note — The above should have been recorded as Survey No. 810, in the order of the surveys, on Page 12, but by an oversight it was omitted at the proper time & the loc. is





264 INDEXED ON MAP

Surveyor's Office Bellefontaine O. July 24<sup>th</sup> 1859

The above Plat represents the line between sections 29 & 30, 35 & 36, of Town No. 3 & Range No. 13 E. G. M. R., in Miami Township of Logan Co. Ohio; as surveyed by me, Henry C. Moore, County Surveyor in & for said County, on the 23<sup>rd</sup> of April A. D. 1859, at the request of Felix Paton & others, of said Township for the purpose of ascertaining & establishing the true & proper line between said sections.

And whereas I can find no marked line between said sections, but the line described as the Random line, (See red line on Plat) in the report of the original survey of said sections, & can find no trees in said Random line that bear the proper marks of corner, or witness trees; and whereas the said report of Original Survey represents that the said Random line was not intended, left, or considered as the true & proper line; and that the corners & witness trees described in said report were not in said Random line; I therefore commenced at a stone at the Original corner between sections Nos. 29, 30, 35, & 36, of said Town & Range, from which a small Ash Stump (original wit.) bears S. 75 1/2 E. 3 links. Run thence N. 89 1/4 W. between sections 29 & 30, cross a small branch at 58.75 chains; cross N. & S. section line at 81 chains. Thence same bearing, between sections 35 & 36, (N 89 1/4 W.), cross a small branch at 25.59 chains; Indian Creek at 86.65 chains, to the West line of said Town No. 13, and at the point from which said Random line commenced, at 90.40 chains.

And afterwards, on the 21<sup>st</sup> day of July A. D. 1859, I set corners in said line as follows: corner between J. J. & Felix Paton at 30.48 chains from the beginning, set a small lime stone & 2 brick bats; Beech tree S. 3 1/4 W. 7 links.

The 1/2 mile corner between sections 29 & 30 at 40.50 chains, Small lime stone & 4 brick bats; Bur Oak 10 In. Dir. S. 1 1/4 W. one link; Ash 10 In. Dir. S. 89 1/4 E. 5 1/2 links. Corner between Felix Paton & Robins at 60.75 chains, Small lime stone & brick; Beech 8 In. Dir. S. 75 1/2 E. 16 links.

Corner between sections 29, 30, 35, & 36, at 81 chains; lime stone & brick; another lime stone S. 1 1/4 W. 140 links. Continuing West between sections 35 & 36, set corner between Robins & John B. Fiddler at 15.42 chains; Small lime stone & 2 brick. The 1/2 mile corner between sections 35 & 36, at 45.20 chains; - small lime stone & a brick; Beech 30 In. Dir. N. 6 1/4 W. 7 1/2 links. Corner in Town line, between sections 35 & 36, at 90.40 chains; Small lime stone & 5 brick bats.

Done in presence of Felix Paton, Adam Keer, Robins, Shadrach McAlla,

Perry Bottle }  
 Charles McKinney } Chain carriers } Daniel Pence, Flag bearer.  
 I hereby certify that the foregoing Plat and report, are correct representations of the things therein set forth.  
 Henry C. Moore County Surveyor of Logan Co. Ohio

Survey No. 815, Adams, Heneda & Trop



Surveyor's Office  
 Bellefontaine Ohio  
 June 2<sup>nd</sup> A.D. 1859.

The above Plat is a representation of four lots of land in Rushcreek Township of Logan

County Ohio, being a part of Original Virginia Military Survey No. 9955, in the name of James Barton, as surveyed by me, Henry C. Moore, County Surveyor in and for said County, on the 26<sup>th</sup> 27<sup>th</sup> days of April A.D. 1859, at the Request of James Adams, John Heneda & John Trop, (on the premises), for the purpose of establishing the lines and corners thereof, & ascertaining the number of acres contained therein, (especially the latter); which I did in the following manner, to wit:

John Heneda's home tract 59.65 Acres

Beginning at a large stone & 2 bricks at the S. E. corner of 166<sup>1/2</sup> acres of land owned by Conner Rollins & Brothers, & in the South line of said Original Survey No. 9955, from which a Wild cherry tree 2<sup>1/2</sup> ln. Dir. bears N. 17 1/4 W. 10 links; & an Ash 6 ln. Dir. N. 79 1/2 E. 26 links; Run thence with the East line of said Rollins land N. 10 + 35 W. 25 chains to a large stone & 2 bricks, at said Rollins S. E. corner in John Mussulman's South line, from which a walnut bush 2 ln. Dir. bears S. 73 3/4 W. 93 links; & a Buck 14 ln. Dir. N. 46 3/4 E. 33 links; Thence, with said Mussulman's South line N. 79 3/4 E. 11.35 chains to a stone & 4 half bricks, at said Mussulman's S. E. corner, from which a Sugar 15 ln. Dir. bears N. 62 W. 81 links; Thence with a Road & another of said Mussulman's lines N. 10 3/4 W. 15 chains (or 20 1/2) to a stone & 2 bricks, a Sugar 20 ln. Dir. S. 61 W. 13 links; a Black Walnut 12 ln. Dir. N. 80 E. 82 links; Thence with another of said Mussulman's lines & the S. line of Jas. Adams Land N. 79 3/4 E. 10.55 chains crossing the Miami to a stone & 2 bricks; a Hickory bush 2 ln. Dir. S. 1 1/4 E. 97 links; & a Red Oak 12 ln. Dir. N. 80 1/2 E. 90 links; Thence S. 10 1/2 E. 29.85 chains to a stone & 2

bricks in the South line of said Survey, a Hickory bush 2<sup>ln</sup> Dir. S. 79<sup>3</sup>/<sub>4</sub> W. 25 links; Thence with the south line of said Survey S. 79<sup>3</sup>/<sub>4</sub> W. 21.5<sup>5</sup> chains, (or 87 poles) crossing the head of the Miami to the place of Beginning; And I find the same to contain fifty nine <sup>65</sup>/<sub>100</sub> (59.65) Acres of land

Heneday  
21<sup>55</sup> Acres

Also 21.5<sup>5</sup> Acres in another lot, Beginning at a stone & brick at John Trop's N. E. corner & in James Adams South line, from which an Ironwood 2<sup>ln</sup> Dir. bears N. 23<sup>3</sup>/<sub>4</sub> E. 4 links; an Ironwood 3<sup>ln</sup> Dir. S. 68<sup>0</sup> W. 6 links, a walnut 7<sup>ln</sup> Dir. N. 62<sup>0</sup> E. 7<sup>1</sup>/<sub>2</sub> links; Thence with said Trop's East line S. 10<sup>0</sup> E. 14.5<sup>4</sup> chains to a stone & 2 bricks, from which an Ironwood 3<sup>ln</sup> Dir. bears S. 80<sup>0</sup> E. 35 links; Thence S. 77<sup>0</sup> E. 4.4<sup>6</sup> chains to a stone & 2 bricks in the old Sanduskey Road from which an Ash 4<sup>ln</sup> Dir. bears N. 61<sup>1</sup>/<sub>4</sub> W. 64 links; Thence with said S. 37<sup>1</sup>/<sub>4</sub> E. 24.5<sup>2</sup> chains to a stone & brick in the South line of the aforesaid Adams land; Thence with said South line of Adams land S. 79<sup>3</sup>/<sub>4</sub> W. 22.5<sup>4</sup> chains to the place of Beginning, And I find the same to contain 21<sup>55</sup> Acres

James Adams  
land, 91<sup>45</sup> Acres

Beginning at a large stone & brick at John Mussulman's N. E. corner from which a B. Walnut 8<sup>ln</sup> Dir. bears N. 89<sup>3</sup>/<sub>4</sub> W. 29 links; & a B. Walnut 11<sup>2</sup> ln Dir. S. 70<sup>4</sup> W. 17 links; Thence N. 77<sup>0</sup> 12<sup>0</sup> E. 35.5<sup>2</sup> chains to a Rock stone & brick bats; from which a Sugar 1<sup>ln</sup> Dir. bears S. 53<sup>3</sup>/<sub>4</sub> E. 11 links; Thence S. 89<sup>0</sup> E. 10.5<sup>2</sup> chains to a small lime stone & 3 brick-bats in the East line of said Original Survey, from which a beech 15<sup>ln</sup> Dir. bears S. 48<sup>0</sup> W. 4 links; Thence with said East line of Survey S. 10<sup>0</sup> E. 18.3<sup>2</sup> chains, crossing the Sanduskey Road & the B. & O. R. R. track, to a stone & brick on the south side of the said R. R. Track; Thence S. 79<sup>3</sup>/<sub>4</sub> W. 45.2<sup>2</sup> chains, crossing the said R. R. track at 30 links, the Sanduskey Road at 2<sup>0</sup> chains; to a yellow stone at one of the S. E. corners to John Mussulman's land; Thence with said Mussulman's East line N. 10<sup>0</sup> W. 20.5<sup>2</sup> chains, crossing the Miami at three places, to the place of beginning & And I find the same to contain 91.45 Acres of land

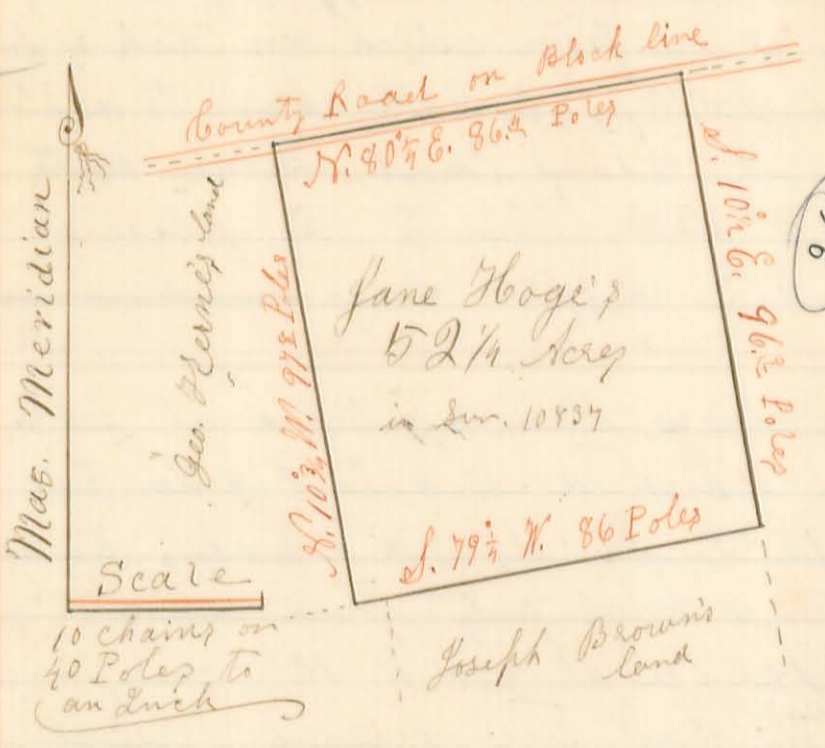
John Trop's  
land 39.52 Acres

Beginning at a stone & 2 brick-bats, at the N. E. corner of John Heneday 59.65 Acres, & in James Adams South line, from which a Hickory 2<sup>ln</sup> Dir. bears S. 1<sup>1</sup>/<sub>4</sub> E. 97 links, & a Red Oak 12<sup>ln</sup> Dir. bears N. 80<sup>0</sup> E. 90 links; Thence with said Heneday's East line S. 10<sup>0</sup> E. 29.5<sup>2</sup> chains to a stone & 2 bricks at said Heneday's S. E. corner & in the South line of said survey, a Hickory 2<sup>ln</sup> Dir. S. 79<sup>3</sup>/<sub>4</sub> W. 25 links; Thence with the South line of said survey N. 79<sup>3</sup>/<sub>4</sub> E. 6.5<sup>2</sup> chains, crossing the Sanduskey Road to a lime stone & 2 bricks, a Bar oak 8<sup>ln</sup> Dir. N. 66<sup>0</sup> W. 29 links; Thence N. 11<sup>0</sup> W. 2.5<sup>2</sup> chains to a stone & 2 bricks in the Sanduskey Road; Thence with said road N. 37<sup>1</sup>/<sub>4</sub> E. 16.5<sup>2</sup> chains to a stone & 2 bricks, an Ash 4<sup>ln</sup> Dir. N. 61<sup>1</sup>/<sub>4</sub> W. 64 links; Thence N. 77<sup>0</sup> W. 4.4<sup>6</sup> chains to a stone & 2 bricks, an Ironwood 3<sup>ln</sup> Dir. S. 80<sup>0</sup> E. 35 links; Thence N. 10<sup>0</sup> W. 14.5<sup>4</sup> chains to a stone & brick in James Adams South line, from which an Ironwood 2<sup>ln</sup> Dir. bears N. 23<sup>3</sup>/<sub>4</sub> E. 4 links; an Ironwood 3<sup>ln</sup> Dir. S. 68<sup>0</sup> W. 6 links; a Walnut 7<sup>ln</sup> Dir. N. 62<sup>0</sup> E. 7<sup>1</sup>/<sub>2</sub> links; Thence with said Adams South line S. 79<sup>3</sup>/<sub>4</sub> W. 14.5<sup>4</sup> chains to the place of beginning & And I find

the same to, <sup>contain</sup> 46<sup>2</sup>/<sub>3</sub> Acres of land.  
 Done in presence of James Adams, John Trope, John Plenede,  
 John Mussalman, Conner Rolley, & others, and the chain  
 carrier, viz: } William Heisel }  
 } Harrison Adams } C. C.

I hereby certify that the foregoing Plat & Report of sur-  
 vey are correct, & that all the Stone & brick corners therein  
 mentioned were planted under my direction, & further that  
 the witness trees named therein are marked thus "X" facing  
 the corners + Henry C. Moore, Co. Sur. Logan Co. Ohio

Survey  
 No. 816  
 Jane  
 Hooge



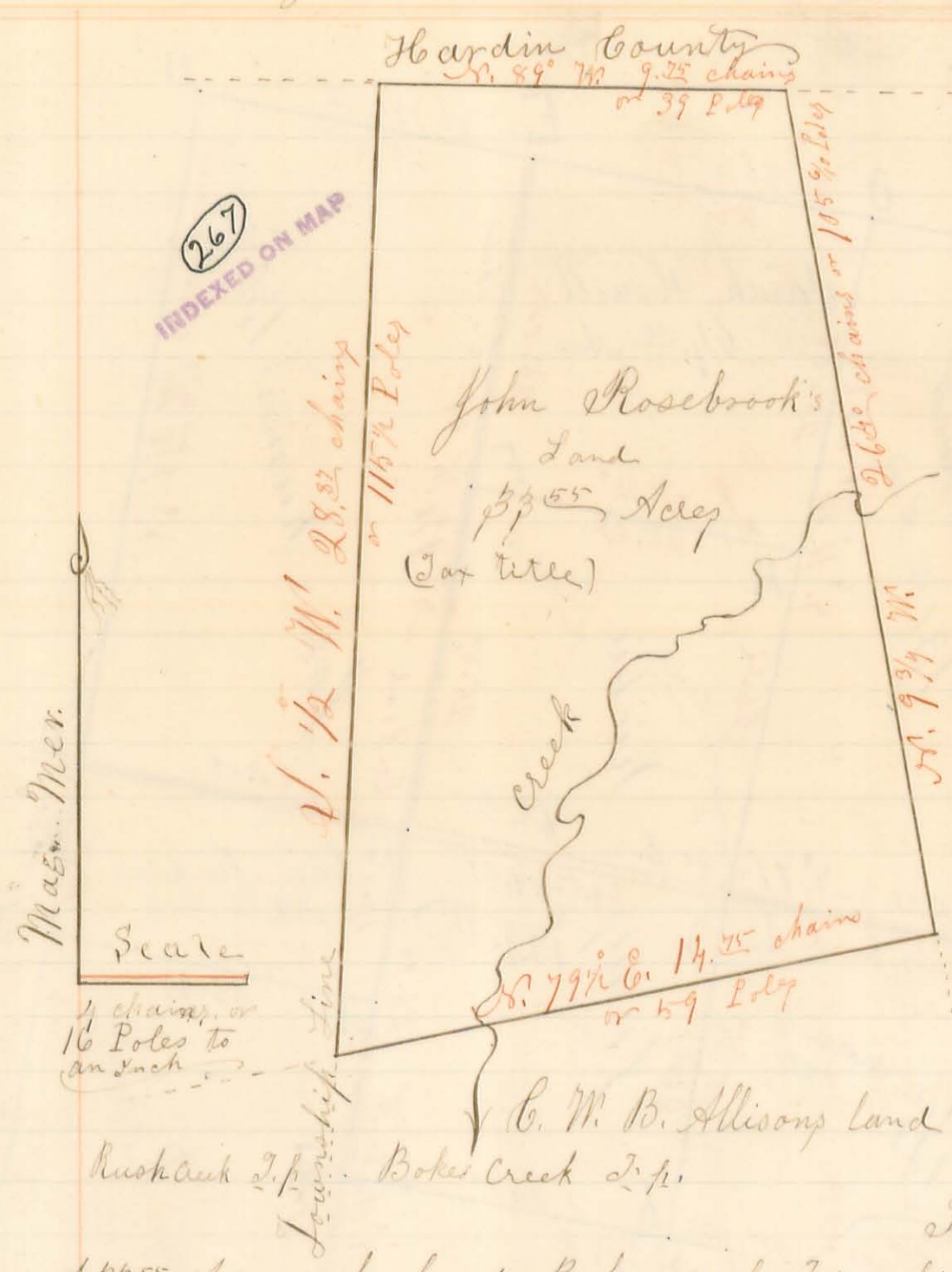
Surveyor's Office Bellefontaine O.  
 June 3<sup>rd</sup> A. D. 1859  
 This Plat is a representation  
 of 52 1/4 Acres of land in Pokes Creek  
 Township of Logan County & State of  
 Ohio; being a part of Original  
 Virginia Military Survey No. 10837  
 in the name of James Higgins,  
 as surveyed by me, Henry C. Moore,  
 County Surveyor in & for said County  
 on the 29<sup>th</sup> day of April A. D. 1859,

Boundry

at the Request of Jane Hooge, on the premises, for the purpose  
 of establishing the lines & corners thereof and ascertaining the num-  
 ber of acres contained therein; which I did in the following man-  
 ner; to wit: Beginning at a 3 cornered Rock Stone & 3 bricks  
 which I planted at the N.E. corner of said Survey from which an  
 ash stump 21 Ln. Dir. bears N. 70 links, & a Beech stump 12 Ln. Dir.  
 S. E links; (both Original witness, or corner trees) & a Sycamore 2  
 Ln. Dir. S. 1 1/2 N. 77 links; Run thence with the East line of said Survey  
 S. 10 1/2 E. 96 Poles to a stake, Stone & 4 bricks, which I here planted, &  
 from which a Lynn Stump 24 Ln. Dir. (now rotten) bears N. 52 1/2 E. 7 links  
 (one of the trees called for in said Hooge's deed) also marked a Bur Oak  
 bush 2 Ln. Dir. bearing S. 86 1/2 W. 73 links; Thence S. 79 1/2 W. 86 Poles to a  
 Rock Stone, a blue stone & a brick, which I planted at the S. W. corner  
 of said 52 1/4 Acres; from which a Sycamore 4 Ln. Dir. bears N. 61 1/2 E.  
 33 links, & a Sour Elm 10 Ln. Dir. S. 25 1/2 E. 27 links; Thence S. 10 1/2 W.  
 97 Poles to a stone & 2 brick, which I planted in the North line of said  
 Survey; being also in the middle of a County Road, from which  
 a horebeam 4 Ln. Dir. bears S. 2 1/2 E. 1 1/4 links; a dogwood stump S. 4 1/2 E. 15 links; (same  
 called for in said deed) Thence with said Survey line & County Road  
 N. 80 1/2 E. 86 1/2 Poles to the place of beginning; And I find the same  
 to contain fifty two & one fourth Acres of land.

Done in presence of Joseph Brown, Wm. R. Watson, Hooge,  
 George Hernes, and } I do hereby certify that the foregoing  
 Henry Watkins & } Plat & report of survey are correct.  
 John Greger } Chain men } Henry C. Moore County  
 Surveyor

Survey No. 817, John Rosebrook



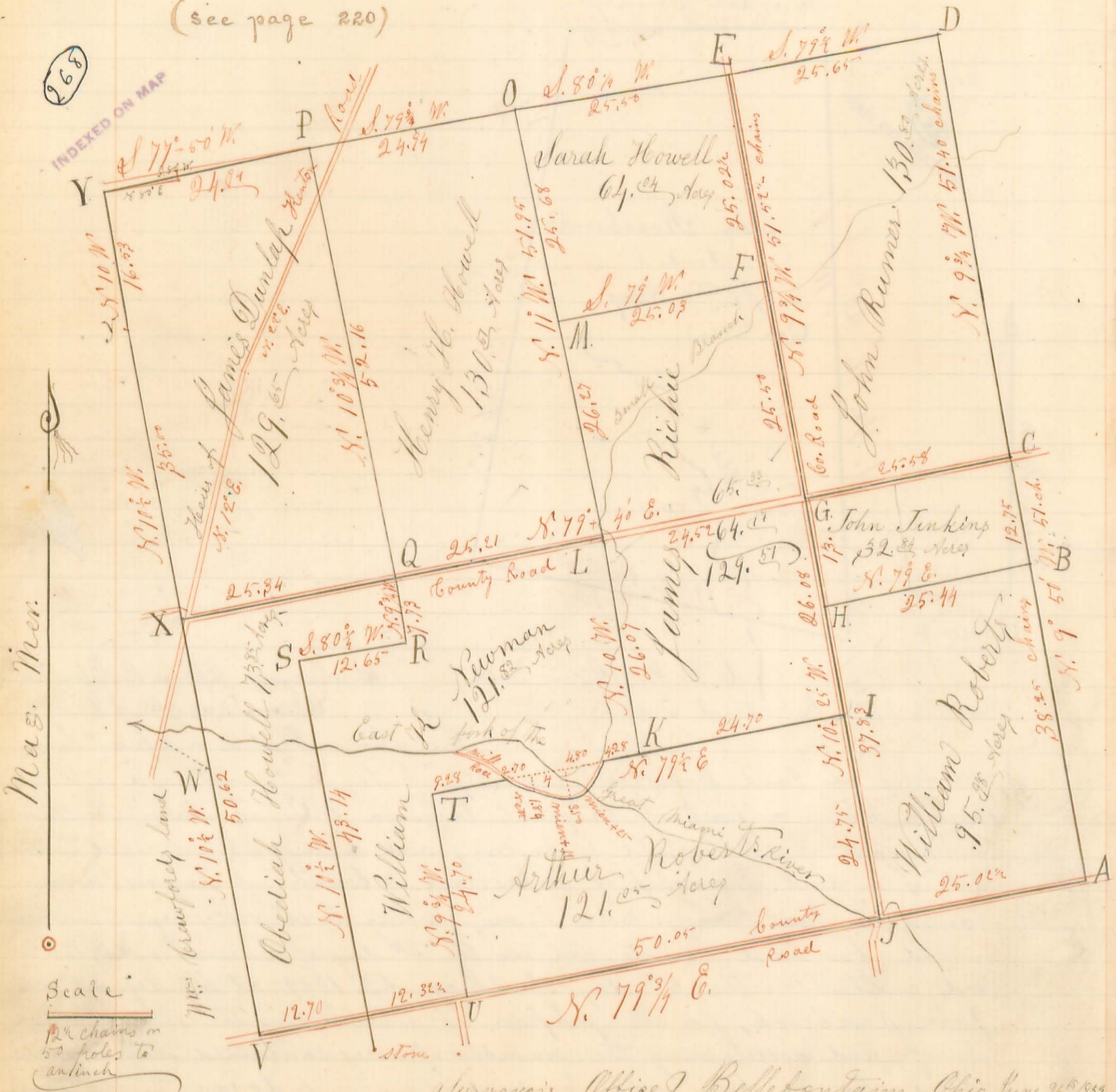
C. W. B. Allison's land } Surveyor's Office Bellefontaine  
 Bokes Creek Twp. } Ohio June 3<sup>rd</sup> A.D. 1859

The above Plat is a Representation of 33.55 Acres of land Bokes Creek Township of Logan County, and state of Ohio; being a part of Original Virginia Military Survey No. 9978, in the name of Porterfield & Taylor, and being all of said Survey that is in said Township of Bokes Creek, & County of Logan, as ascertained by two Surveys made by me, Henry C. Moore, County Surveyor in and for said County, one on the 4<sup>th</sup> day of December A.D. 1858, and another on the 5<sup>th</sup> day of May A.D. 1859 at the request of John Rosebrook, for the purpose of establishing the lines & corners thereof, and ascertaining the number of acres contained therein, said land having been sold by said County of Logan, to the said John Rosebrook, for delinquent Taxes & surveyed as follows: to wit:

Beginning at a Stake at the S.E. corner of said Survey from which a Sugar 12 Ln. Dir. bears S. 8° W. 21 links, & a Red Oak 4 ft. Dir. bears S. 48° W. 64 links; Run Thence N. 9 1/4° W. (crossing a creek at 10.25 chains) 26.00 chains with the East line of said Survey to a bearing Lynn 15 Ln. Dir. (corner) in the line between the Counties of Logan & Hardin; Thence with said County line N. 89° W. 9.25 chains to a Stake at the North end of the line between Rushcreek & Bokes Creek Townships of Logan County; from which a Lynn 20 Ln Dir. bears S. 24 1/2° W. 10 links; a Beech 8 Ln Dir. S. 61° E. 8 links; & an Ash 20 Ln. Dir. S. 61° E. 39 links; Thence with said Township line S. 1/2° W. 28.22 chains to a Stake in the South line of said original Survey 7878, from which a Beech 10 Ln Dir. bears N. 37 1/2° E. 15 links; and a Hickory 24 Ln. Dir. S. 53 1/2° W. 15 links; & Thence with said Survey line N. 79 1/2° E. 14.25 chains to the place of beginning, crossing a branch at 3.00 chains & And I find the same to contain 33.55 Acres of land & I hereby certify the above Plat & report of Alex. & under Corwin } Survey to be correct & Henry C. Moore, }  
 Geo. Rosebrook } Chain men } County Surveyor of Logan Co Ohio

Survey No. 818 x Cont. Va Mil. Sur. in 9975

(see page 220)



Surveyors Office Bellefontaine Ohio June 26<sup>th</sup> 1859

The above Plat is a representation of Original Virginia Military Survey No. 9975, in Rushesek Township of Logan County Ohio, as Surveyed by me, Henry C. Moore, County Surveyor in and for said County, on the 26<sup>th</sup> 27<sup>th</sup> 28<sup>th</sup> days of May, & the 9<sup>th</sup> day of June A.D. 1859 at the Request of Mr. R. Neaman, & the other land owners in said Survey, for the purpose of establishing the lines & corners of said Survey 9975, & those of its subdivisions, & together with the areas thereof. The area of each subdivision, the owners name, & the bearing & length of each line, are represented on the Plat & I find the South line of the Survey to be straight & the other three not quite straight; there ~~being~~ being a small angle at C, E, O, P, & S. I find the line trees on the East, North, & West lines, but none on the South.

The original call for the lines of this Original Survey is N. 73 E. & N. 12 N. 400 poles each. The variation of bearing is from 1 1/2 to 2 1/4 East, and the lines vary in length from 10 link, to 240 link, (or near 10 poles)

The North line of the survey running from the S.E. corner at D, west by E, O, & P runs south of the S.W. corner at Y 74 links, bearing from P, ~~the~~ South 80 west x Another line runs from the S.W. <sup>corner</sup> at Y, N. 88 E, about 25 rods & there stops x Each of these lines count out 35 year growth of wood over the ax marks, backs; now in June 1859 x Since these lines do not connect, nor connect the corners; I run a straight line between those two old lines from the black corner at Y to the corner at P; marking it only on the west side of the line trees, with a hack & blaze;

Table Showing the Monuments at the different corners x

For removal of monument marked in see page 220 this book

|  |  |   |
|--|--|---|
| A. A, is a square lime stone, 2 brick-bats, & some glass.          | Q brick, & some pieces of rock                 | U = Stone, & a Black Walnut 7 Ln. Dir. S 77 W. 77 links           |
| B. Long slim lime stone, 2 brick-bats, & 4 small stones.           | R = Rock stone & 2 brick-bats                  | V = Stone in a County of  |
| C = Rock stone, some pieces of Hick creek, a bone, & a smoke pipe. | L = <sup>see map in</sup> Rock stone & a brick | sugar stump N. 12 W. 23 links (original)                          |
| D = Rock stone & Stakes, Buck 13 Ln. Dir. N. 66 W. 44 links        | M = Rock stone, & 2 brick-bats x               | Beech stump, (now rotten) S. 2 E. 22 links, (one of the original) |
| Black Walnut 3, S 77 E. 23 links                                   | O = Rock stone & a brick,                      | W. Oak 5 Ln. Dir. N. 47 W. 33 links                               |
| E = Lime stone, & two brick  | Sugar 24 Ln. Dir. N. 56 E. 24 links            | Do. 5 Do. S 6 E. 46 links x                                       |
| Sugar 22 Ln. Dir. N. 72 W. 34 links                                | Hickory 15 Ln. Dir. S. 77 W. 33 links          | W = Stone & brick;  |
| Walnut 4 Ln. Dir. S. 82 E. 38 links                                | P = Rock stone & brick,                        | Elm 4 ft. Dir. N. 44 W. 37 links                                  |
| F = Large Rock stone & 2 brick-bats                                | Buck 14 Ln. Dir. N. 47 W. 13 links             | from V to W is 32 chimes x  |
| G = Lime Stone, brick, and the bottom of a creek.                  | Bur Oak 6 Ln. Dir. S. 67 E. 38 links           | X = Rock stone & brick,   |
| H = Rock stone, & a brick bats                                     | 2 small Buckeye near x                         | two Elms, & Hack back S. 43 W. 14 links                           |
| I = Rock stone, & 2 brick bats,                                    | Q = Stone & brick x                            | Y = Rock stone & brick in the                                     |
| Buckeye 4 Ln. Dir. S. 14 W. 12 links                               | R = Stone & brick x                            | intersection of the original lines                                |
| J = a Blue flint sand stone 3 ft long,                             | S = Stone, - - - x                             | Ash 18 Ln. Dir. N. 33 W. 14 links                                 |
|  | T = Rock stone, 2 brick-bats,                  | Maple 11 Do. S. 6 E. 13 links                                     |
|  | Sugar 20 Ln. Dir. N. 13 W. 13 links            | Elm 9 Do. S. 31 E. 23 links                                       |
|  | Do. 14 Do. S. 47 E. 27 links                   | These 3 trees bear original corner marks                          |

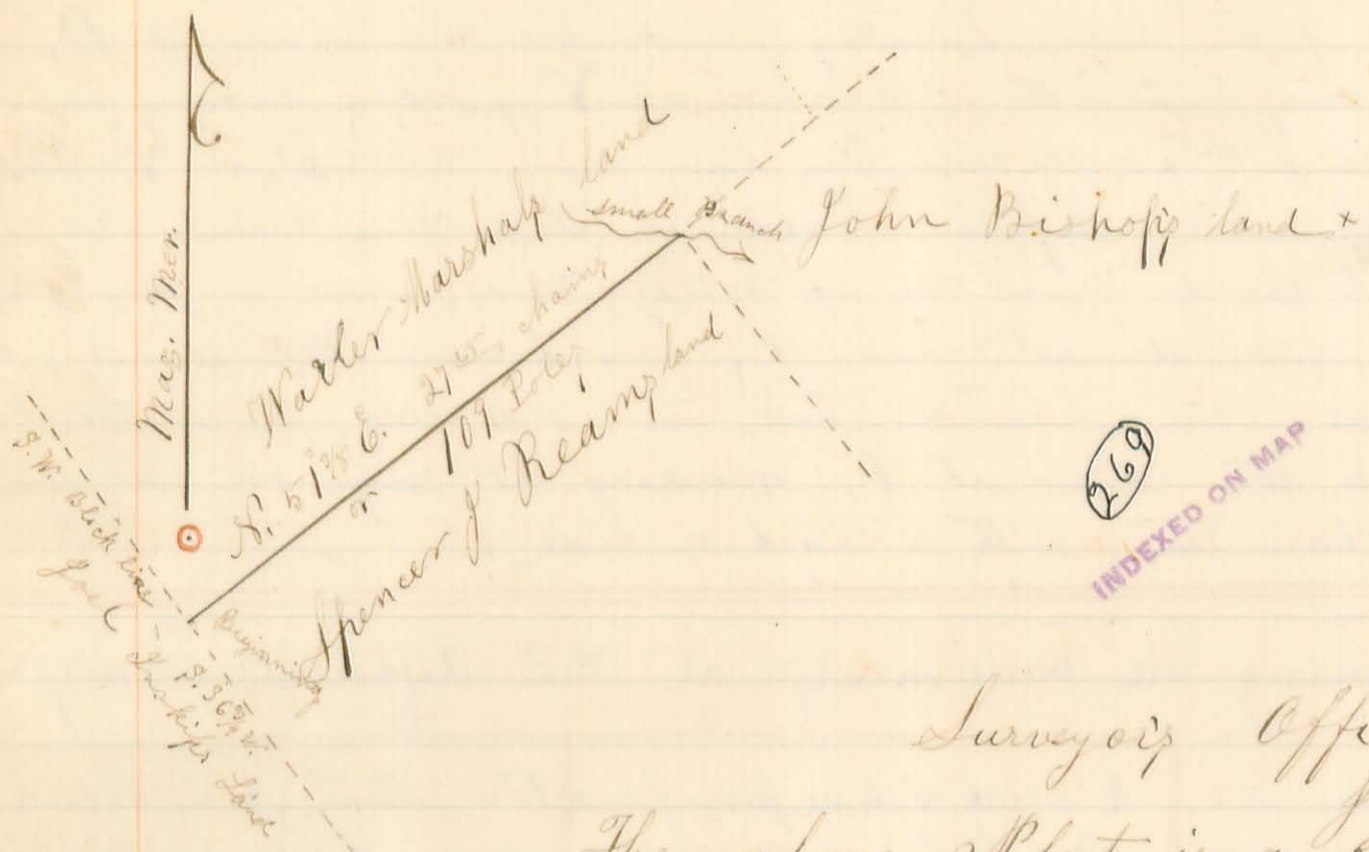
I planted all the above named corner stones, except those at S. and V, both of which I find to be correct x the length of the lines are marked on the Plat in chains & hundredths, (or links) [One chain being 4 rods; & each 25 (hundredths, or links) one rod.]

Done in the presence of Wm. R. Newman, Arthur Robert, William Roberts, John Jenkins, James Richie, John Rumer, Henry H. Howell, William Dunlap, Obadiah Howell, William Crawford, Hazard Hopkins & others and George Crawford, Walter Howell, & J. Chain carriers } Green Porter.

I hereby certify that the foregoing Plat, and notes of survey, are a correct representation of the survey made, as therein represented; at witness my hand on the day of the foregoing date x

Henry L. Moore, County Surveyor of Logan County Ohio

Survey No. 519; Spencer J. Reams x



Surveyors Office Bellefontaine Ohio  
June 30th A. D. 1859

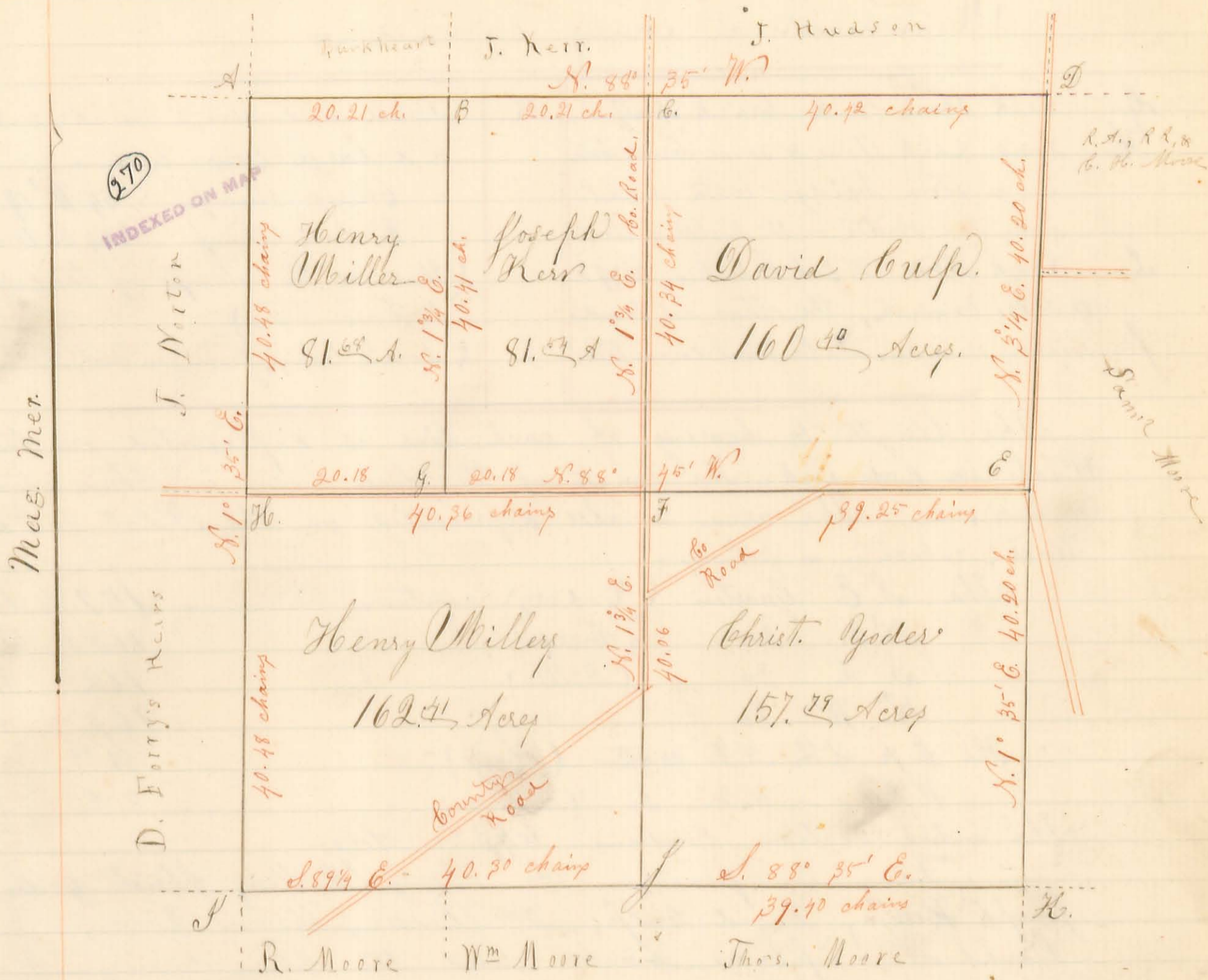
The above Plat is a representation of a compromise line, between the lands of Spencer J. Reams and Warler Marshal, in Original Virginia Military Survey No. 4857, in the name of Levi Hollingsworth, in Vaner Township of Logan County, Ohio, as surveyed by me, Henry C. Moore, County Surveyor in & for said County, on the 14th day of June A. D. 1859, at the request of said Spencer J. Reams, for the purpose of establishing said line; the location of which was doubtful & disputed, and it being very difficult to determine its location from their deeds or other papers; they each agreed at the time aforesaid, and on the ground of said line before me; that the following line, (as represented in the above Plat) should be their true, lawful, & established line between the lands as aforesaid: to, wit; Beginning at a stone, two, sugars, a Linn, & a Beech in the south west line of said Original Survey; run thence N. 51 1/2 E. 27<sup>or</sup> chains, (or 109 poles) to a stake in a small branch, between an Elm tree, and an Ash Stump, at John Bishops Westerty corner, x

Done in presence of Spencer Reams, Warler Marshal,  
John Bishop, Jose H. Garwood, Joel Luskips, and  
John Wilson & }  
David Edwards } Chain men }

I do hereby certify that the foregoing Plat, and Report of Survey are correct x  
Henry C. Moore, County Surveyor of Logan Co. O.



Survey No. 820, Sec. 20 T. 3 R. 14,



Surveyor's Office Bellefontaine Ohio August 9th A.D. 1859.

The above Plat is a representation of Section No. Twenty (20), of Town No. Three (3) and Range No. Fourteen (14). E. G. M. R., in Union Township of Logan County, Ohio, as surveyed by me, Henry C. Moore, County Surveyor in & for said County; on the 16<sup>th</sup> & 17<sup>th</sup> days of June; & resurveyed on the 4<sup>th</sup> day of August A.D. 1859; at the Request of Henry Miller, Christ. Yoder, Jos. Kerr, & David Culp; for the purpose of establishing the lines & corners thereof, with those of its subdivisions; and ascertaining the number of Acres contained in each of said subdivisions.

The monuments at the corners are as follows:

- |   |  |
|---|--|
| <p>A. = Large Rock Stone, &amp; 3 brick bats,<br/>White Oak 22 In. Dir N. 87° W. 48 links,<br/>Do. 30 Do. S. 85° E. 14 links (Original witness)</p> <p>B. = A long Rock Stone &amp; 3 brick-bats,<br/>Bur Oak 22 In. Dir N. 26° W. 34 links</p> <p>C. = A long rock stone, &amp; 3 brick-bats,<br/>&amp; a piece of iron casting,<br/>Cherry tree 10 In. Dir. S. 23° E. 64 links</p> <p>D. = Large Rock Stone with five small<br/>stones planted about it,<br/>White Oak 18 In. Dir. S. 55° E. 22 links</p> | <p>White Oak stump S. 81° W. 7 links<br/>(These are no doubt the <u>original</u> witnesses,<br/>notwithstanding some discrepancy in<br/>the bearing &amp; distance)</p> <p>E. = Large Rock Stone, 3 brick bats,<br/>&amp; a piece of iron casting.<br/>White Oak 16 In. Dir. S. 8° W. 45 links.<br/>(Original; the other witness not found)</p> <p>F. = Small Rock Stone &amp; a brick bat,<br/>White Oak 22 In. Dir. S. 55° W. 29 1/2 links</p> |
|---|--|