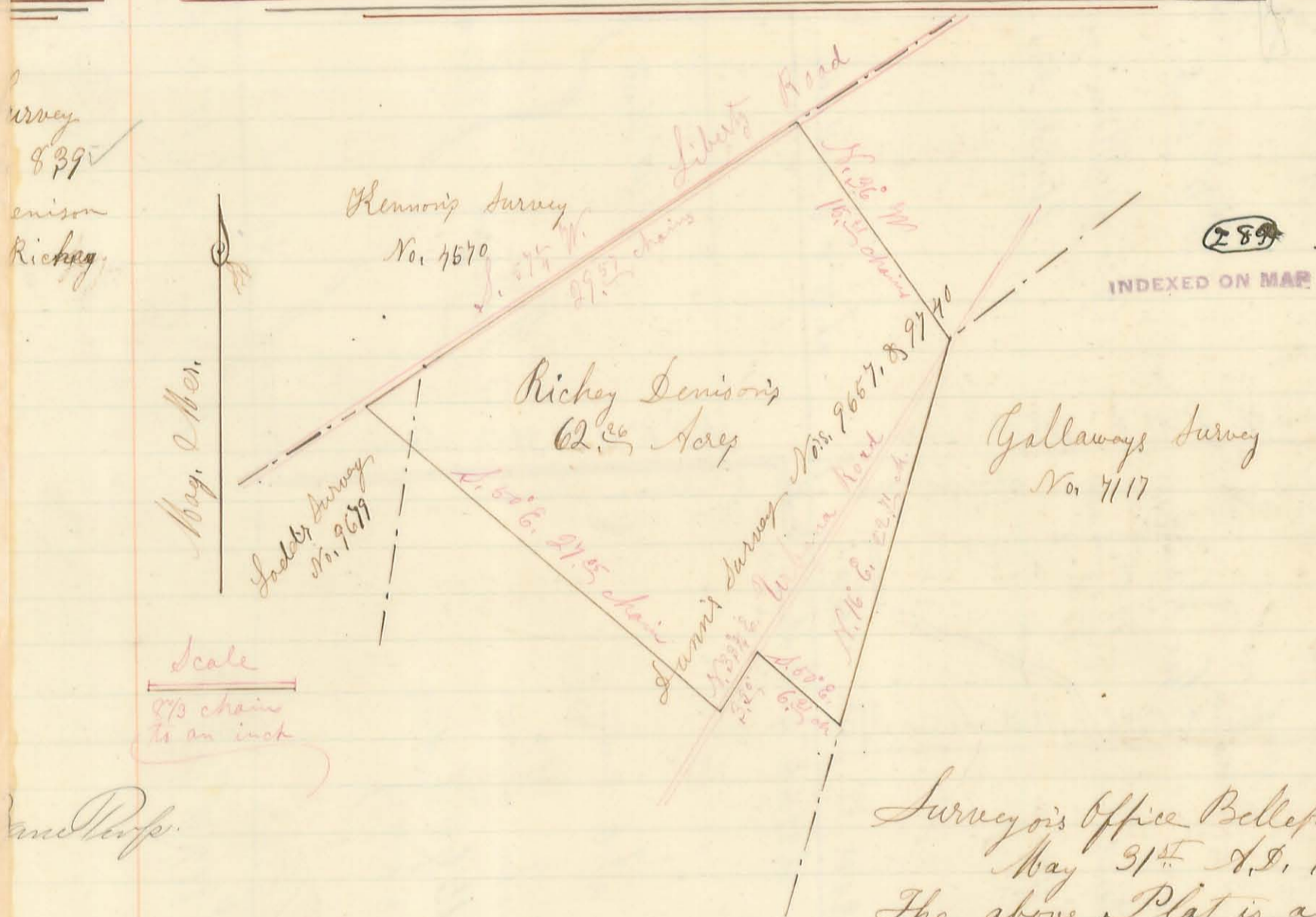


to a rock stone (with a brick under it, and a small lime stone on the N. & S. sides each) in the west line of said survey, & in a County Road; Thence with said line and Road N. 10° 5' W. 30<sup>00</sup> chains to the place of Beginning; and find the same to contain 99<sup>05</sup> acres of land;

Done in presence of Thomas Cook, Wm. Collins, Wm. C. Collins James A. Collins, John N. Richards, Abraham Patterson and the Chain men

C. W. Cook  
Elihu Richards } Chain Men

Henry C. Moore, Co. Sur, Logan, Co. Ohio



Survey  
839  
Denison  
Riches

Mag. & Mer.

Scale  
1/32 chain  
to an inch

and Prop.

Surveyors Office Bellefontaine Ohio  
May 31<sup>st</sup> A.D. 1861

The above Plat is a representation

of 62<sup>00</sup> acres of land in Zane Township of Logan County Ohio; being a part of the Original Virginia Military Survey Nos. 9657, 9740, and a part of Laddys Survey No. 9679, as surveyed by me, H. C. Moore, County Surveyor in and for said county on the 10<sup>th</sup> day of January A.D. 1861, at the request of Richey Denison, for the purpose of establishing the lines and corners thereof and ascertaining the number of acres contained therein; to wit: Beginning at a Sugar tree at the East corner of said 62<sup>00</sup> acres, being also a corner between said Denison's Survey & Galloways Survey No. 7117, from which a stone bears S. 47° 13' E. 13 links; Thence with the line between said Denison & Wm. Alexander, N. 36° W. 16<sup>00</sup> chains to a large stone in a County road, & the South line of Lennons Survey No. 4570; Thence with said line & road, S. 67° 5' W. 29<sup>00</sup> chains to a stone; passing a stone at the N.E. corner of Laddys Survey No. 9679 at 25<sup>00</sup> chains; Thence S. 50° E. 27<sup>05</sup> chains to a stone in the Urbana Road; Thence with said road N. 33° E. 32<sup>00</sup> chains to a stone & brick; Thence S. 50° E. 6<sup>00</sup> chains to a stone & brick in the East line of said Jennys Survey, Sugar tree 22 Ln. Dir. N. 65° W. 9 links, & a Sugar tree 22 Ln. Dir. S. 65° E. 13 links; Thence with said line N. 16° E. 22<sup>00</sup> chains to the place of beginning, and find the same to contain 62<sup>00</sup> acres of land.

Edward J. Campbell & David Alexander, Chain Men

Henry C. Moore, Co. Sur of Lo. Co. Ohio



Survey No. 940

Hinsinger  
Rock  
Boggs  
Smith  
et al

County Road

(this line not run)

(290)

INDEXED ON MAP  
Range Line



Scale  
10 chains or  
40 feet to  
an inch



Surveyor's Office Bellefontaine Ohio July 20<sup>th</sup> A.D. 1860

The Plat on the preceding page (52) Represents Section No. 6, of Town No. 3, of Range No. 13; and Section No. 36, of Town No. 4, and Range No. 13, E. G. M. R., in Miami Township of Logan County and State of Ohio; as surveyed by me, Henry C. Moore, County Surveyor in and for said county on the 21<sup>st</sup>, 22<sup>nd</sup> & 23<sup>rd</sup> days of May, the 6<sup>th</sup> day of June A.D. 1860, at the request of George Kinsinger, Daniel & J. W. Koch, & others, for the purpose of establishing the lines and corners thereof, subdividing the said sections, & ascertaining the areas of the various parts of the subdivisions; The bearing & distance of each particular line; the name of the owner, and area of each lot, are marked on the said Plat; except those three small lots marked "P", "S" & "K", respectively; The lot marked "P" is a small lot owned by Joseph Park, used for a Tannery (not measured), John Pegan's lot contains five acres, including Park's lot; The lot marked "S" is one square acre, in the S. W. corner of the East half of the N. E. quarter of Sec. 6, T. 3 & R. 13; owned by John Shaw, and has a stone and brick at each corner. - The lot marked "K" contains one acre, is eight rods wide N. & S.; by twenty rods long E. & W., and has a stone & brick at each corner; - and is owned by George Kinsinger.

The monuments at the corners are as follows; - At the corner marked "A" - a large rough rock stone & a brick; - "B" - Stake; - "C" - Rock stone; "D" - stone, cherry stump west 7 links; W. oak tree 24 In. Dir. east 5 links; - "E" - stone & brick, Forked White Oak S. 88° E. 42 links; "F" - stone; - "G" - stone; - "H" - stone; - "I" - stone & brick; - "J" - stone; "K" - stake in ditch, stone east 12½ links, & a stone west 12½ links; "L" - long rock stone, Bur oak 12 In. Dir. N 75° E. 21 links; - "M" - stone & brick, W. oak 22 In. Dir. N. 89° W. 37½ links, & White oak 14 In. Dir. N. 45° E. 39 links; "N" - S. W. corner of a fence post at the S. W. corner of a yard or lot, the roots of a large white oak stump, or tree S. 72° E. 15 links; "O" - large blue stone & a brick, Plumb tree 10 In. Dir. South 6 links, the N. W. corner of Jan House S. 80° E. 44 links; - "P" - Stake, dead Red Oak 24 In. Dir. N 87° E. 10½ links, W. Oak 15 In. Dir. S. 85° W. 1 links; "Q" - large rock stone, with a stone under it in its natural bed; "R" - stone; - "S" - stone, W. oak S. 41° E. 15 links, W. oak stump N. 81° W. 32 links; - "T" - stake; - "U" - stone, W. Oak 20 In. Dir. South 26 links;

Done in presence of, J. Koch, J. W. Koch, George Kinsinger, James Smith, John Shaw, Lyman Doan, Wm. Boggs, the Chain Men and others,

Wm. Kinsinger & Daniel Bontriger } Chain Men  
Henry C. Moore, Co. Sur. of Logan Co. O.

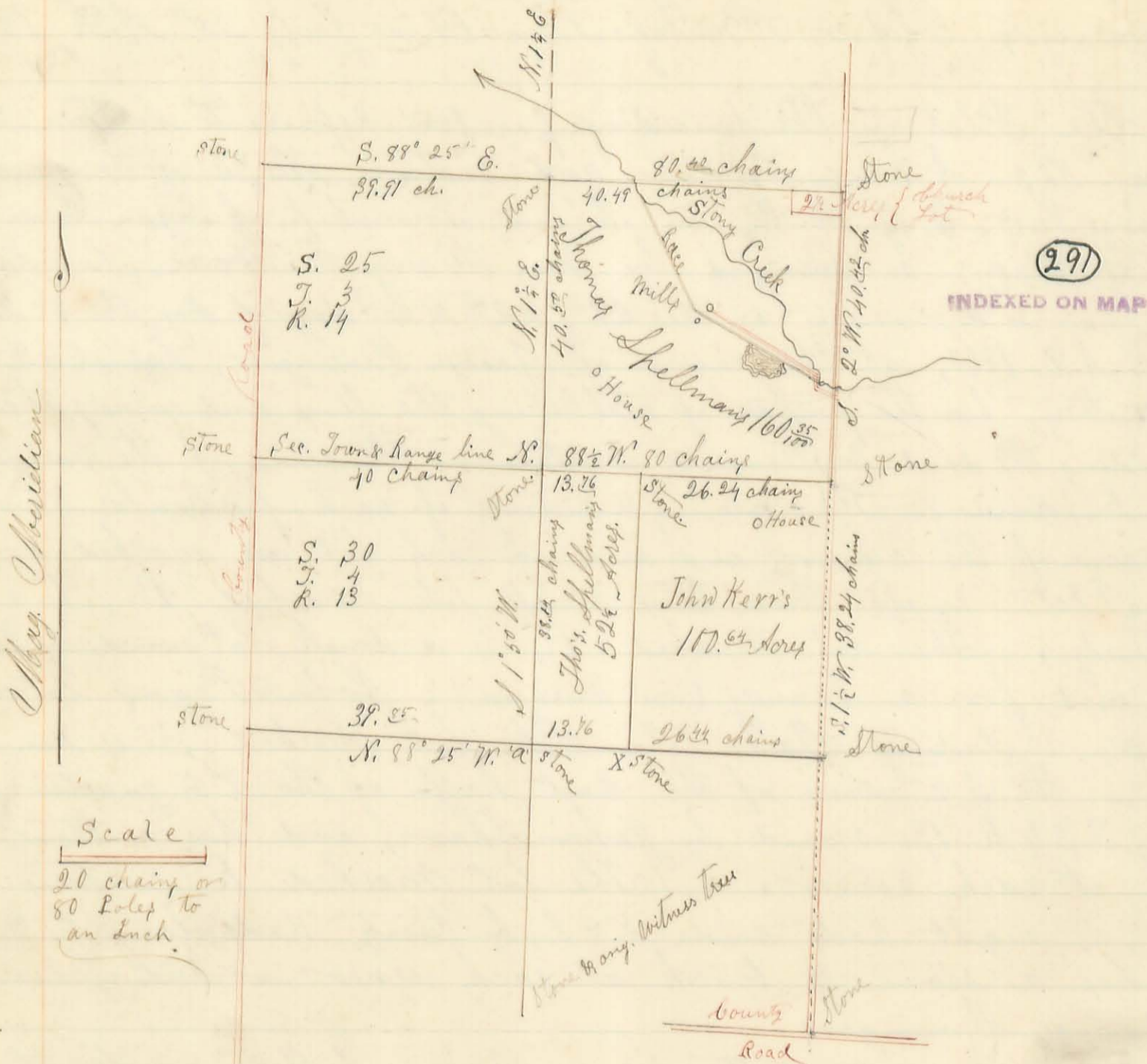


Survey No. 841

Kerr

Spellman

Stone & original witness in N. line of the sect.



Surveyor's Office Bellefontaine Ohio Dec. 8th 1860.

The above Plat is a representation of a part of section No. 25 of Town No. 3 & Range No. 14, and a part of section No. 30 of Town No. 4, & Range No. 13, E. of M. R., in Union Township, of Logan County Ohio, as surveyed by me, H. C. Moore, County Surveyor of said County, on the 5th & 6th days of Nov. A. D. 1860, at the request of John Kerr & Thomas Spellman, for the purpose of establishing the lines & corners, and ascertaining the areas of the South East quarter of the former, & the North East quarter of the latter section, and also to cut 52 1/2 acres off the West side of the said N. E. quarter of sect. 30, of Town 4 & Range 13; as sold by said Kerr to said Spellman. The bearing & length of the various lines are marked upon the Plat; the length being in Chains & hundredths. All the Black lines were run & measured as per Plat. The dotted line was chained only; The broken line was run with the Transit but not chained. There is a stone at each corner marked "Stone" Also at the center corner of Sect. 30, at 'a' is a W. Oak 24 Inches in Diameter bearing S. 68° W. 5 links, & a W. Oak 22 In. in Dia. bearing N. 81° E. 15 links; At S. E. corner of the 52 1/2 acre lot at 'x' is a small stone, W. Oak 24 In. in Dia. N. 64° E. 42 links; W. Oak 20. In. Dia. N. 65° W. 40 links. The S. E. quarter of Sect. 25 contains 162 85/100 acres, of which the Church lot is 2 1/2 acres; & Thomas Spellman's part is 160 35/100 acres.

The N. E. quarter of section No. 30 contains 153 44/100 acres, of which Thomas Spellman's part is 52 1/2 acres; and John Kerr's part is 100 64/100 acres.  
 Done in the presence of Thomas Spellman, David Spellman and the Chainmen  
 Thomas Jas. Spellman & Joseph Plank } Chainmen  
 Henry C. Moore, Surveyor of Logan Co. Ohio

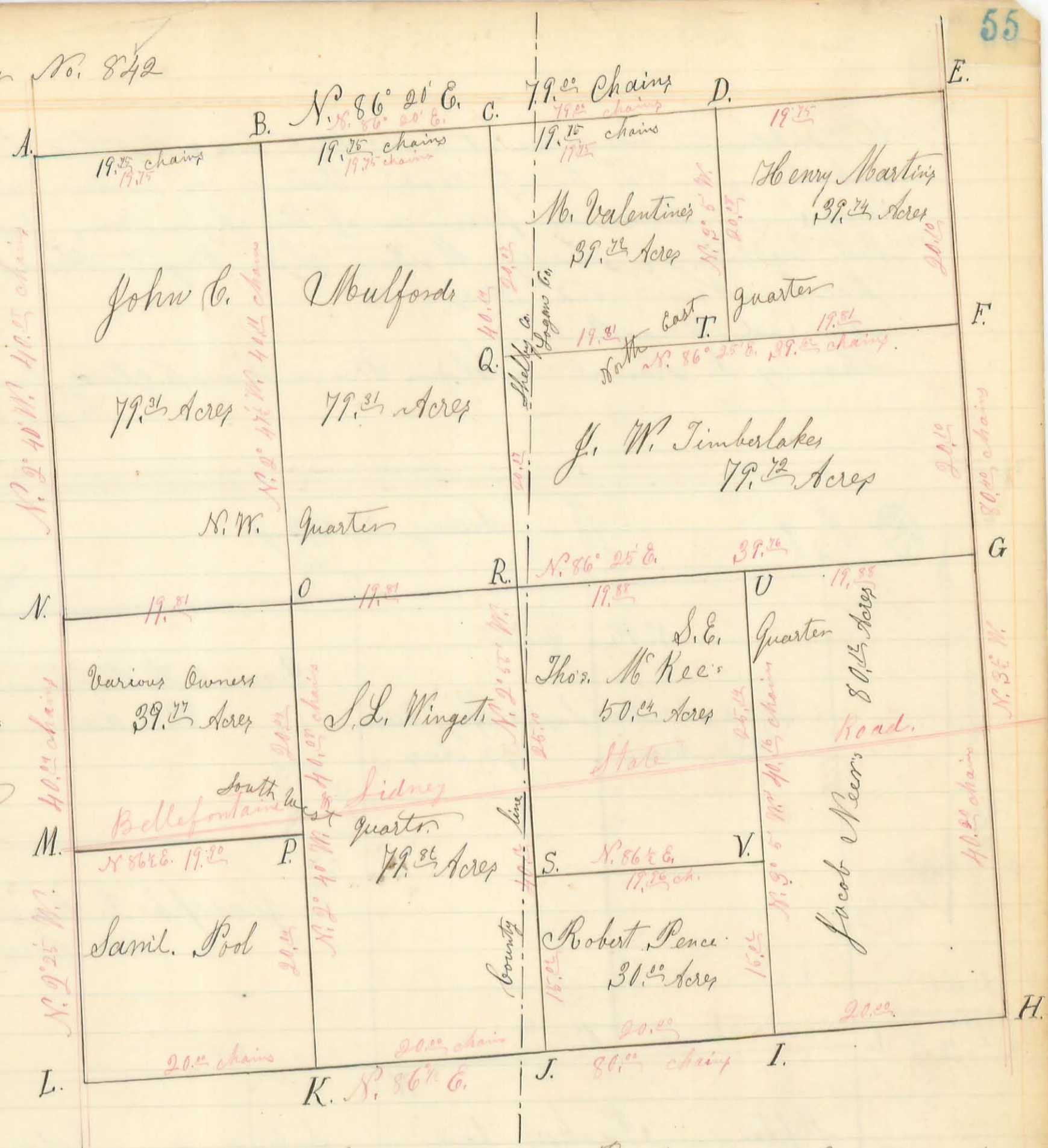


Survey No. 842

292

Mag. Mer.

Scale  
10 chains or  
40 Poles to  
an Inch



Surveyor's Office Bellefontaine Ohio June 8th 1861  
 The above Plat is a representation of Section No. 8, of Town No. 1, & Range No. 8. E. M. M., in Pleasant Township of Logan County Ohio, as surveyed and subdivided by me, H. C. Moore, County Surveyor in and for said County, on the 13th & 14th days of November A. D. 1860, at the request of Jacob Neer and others, for the purpose of establishing the lines and corners of said Section, together with those of the several parts of the subdivision; and to ascertain the areas of said subdivisions:

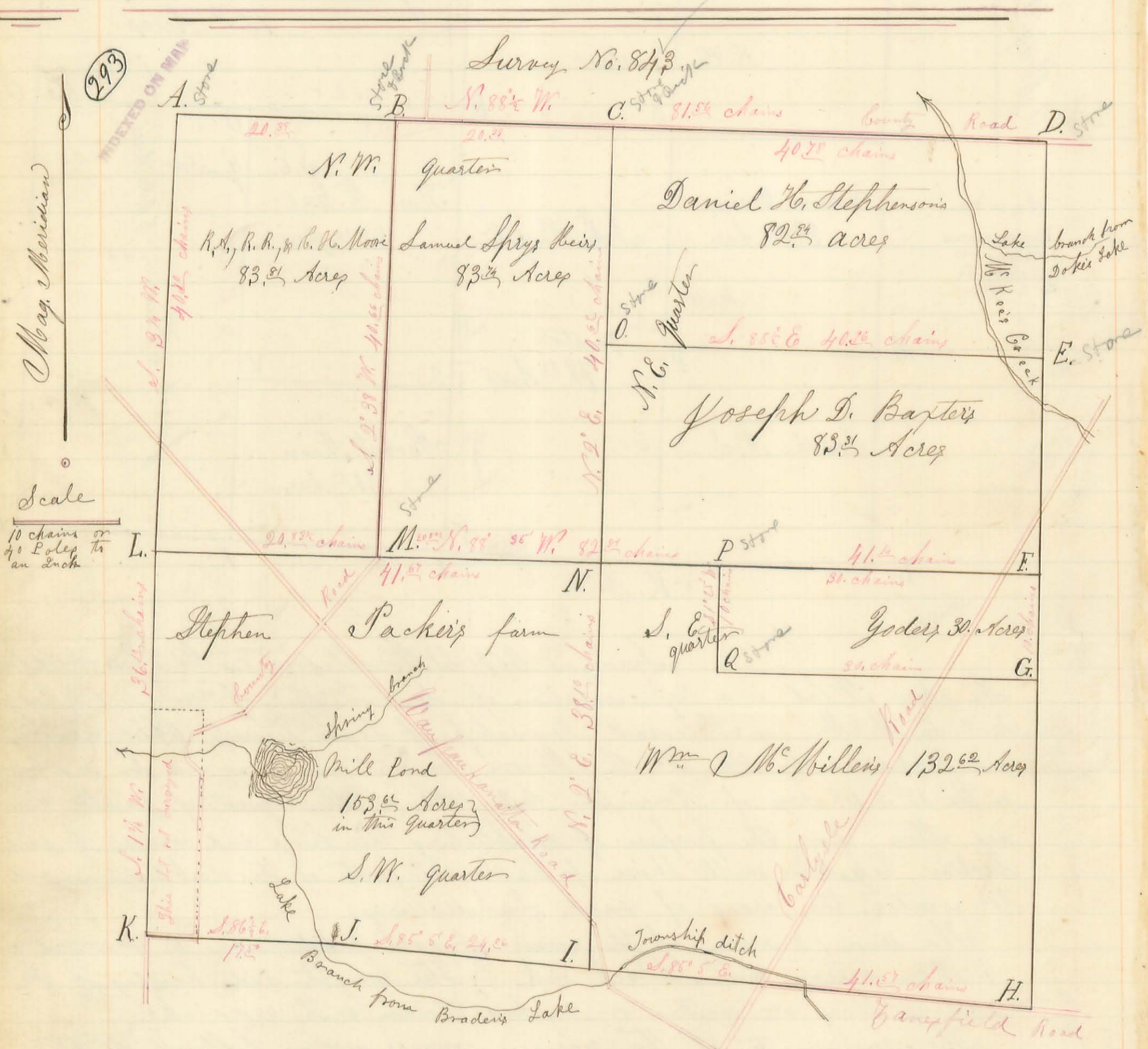
The area, & name of the owner of each subdivision is marked, or written thereon with black ink: - The length and bearing of the various lines are written or marked thereon with red ink:

The monuments at the various corners are as follows: At the corner marked "A" is a flat stone; at B, O, & M, a stone & brick each; at C, a stone & brick, and an Ash Stump 15 inches Dia. S. 19° E. 25 links; Stumps of the Original witness; at N, stone & brick, Beech Stump 16. S. 80° E. 8 links, stump of an original witness, the other not found; at L, stone in road with another stone on south side of it; at G, Stone & brick, Bur Oak 30 Ln. Dia. S. 17° E. 6 1/2 links; at J, Stone Double Sweet Elm, each fork 7 Ln. Dia. S. 21° W. 11 1/2 links; at D, E, F, H, I, K, P, Q, R, S, T, U, and V, each a stone. The original witness trees were not found at either of the section corners; The North line & South line of the section are not marked on timber by the Original line marks, in which line



the subdivision corners are set; The East line & West line of the section each being in a County road, there is no timber now in these lines. Done in presence of the chain men, John C. Bullford, Nat. Valentine, Henry Martin, S. L. Winget, Thomas Mc Kee, Jacob Nees and others.

Nimrod Duvall & Thomas D. Stewart } Chain Men - Henry C. Moore, County Surveyor of Logan County, Ohio



Surveyor's Office Bellefontaine Ohio June 17<sup>th</sup> A.D. 1861.

The above Plat is a representation of Section No. 18, of Town No. 4, & Range No. 13, M. R. S., in Union Township of Logan County and State of Ohio, as surveyed and subdivided by me, Henry C. Moore, County Surveyor in and for said County of Logan; on the 29<sup>th</sup> & 30<sup>th</sup> days of April, A.D. 1861, at the request of James Braden, Joseph D. Baxter and others; for the purpose of establishing the lines & corners of said Section, together with those of its several subdivisions, and ascertaining the areas of said subdivisions; I went due notice thereof being given to



to the several land owners, within said section; The area and name of the owner of each subdivision are written thereon with black ink: The length and bearing of each line are written thereon with red ink. The County roads are represented by two parallel red lines; The monuments at the various corners are as follows; to wit: At the N.W. corner of the section, marked "A" (on the Plat) is a Stone; W. Oak stump 20 Ln. Dir. with witness mark on the north side, & 8 inches from the heart S.  $42^{\circ}$  W. 17 links; W. Oak tree green 24 Ln. Dir. marked as a witness N.  $12^{\circ}$  E. 34 links, (Original witness); at B. Stone & brick, Black Oak 20 Ln. Dir. S.  $83^{\circ}$  W. 26 links; at "C," long flat stone & brick, W. Oak 18 S.  $10^{\circ}$  W.  $52^{\frac{1}{2}}$  links; at D. a stone, (trees gone); at E., M., O., P and Q each a stone and brick; at F. a Stone & brick double W. Oak each 24 N.  $16^{\circ}$  E. —, at G. a Stone & brick, a W. Oak 24 Ln. Dir. S.  $40^{\circ}$  E. 7 links, at H. a stone, a W. Oak 22 N.  $57^{\circ}$  E. 51 links; Original witness; the other not there now, marked another W. Oak 24 S.  $55^{\circ}$  W. 72 links; I a Rock Stone  $3\frac{1}{2}$  feet long, at J. a W. Oak 16 Ln. Dir. Original line tree, making an angle in the south line of the section here, so as to follow the original line as marked; at K. a line stone, W. Oak stump 10 Ln. Dir. (now dead) N.  $38^{\circ}$  W. 13 links, stump of the Original witness; the Dogwood not found; marked another Dogwood 6 Ln. Dir. S.  $62^{\circ}$  W. 53 links, & a W. Oak 22 S.  $70^{\circ}$  W. 67 links; at L. a stone, Black Oak 20 Ln. Dir. N.  $21^{\circ}$  E. 130 links, marked as an Original witness tree; at N. a long Stone & brick, W. Oak 20 Ln. Dir. S.  $55^{\circ}$  W. 37 links; Crossings — From D. west cross Mc Kee's creek at 9 chains — From A. south cross the Waupaukanatta Road at  $30^{\circ}$  chains; From K east cross Lake branch at  $16^{\circ}$  chains; pass a W. Oak line tree at  $17^{\circ}$  chains, cross Waupauk. Road at  $42^{\circ}$  chains, Township ditch at 45 chains; the Carlyle road at  $57^{\circ}$  chains, the Township ditch again at  $61^{\circ}$  chains; From H. north, cross Carlyle road at 47 chains Mc Kee's Creek at  $57^{\circ}$  chains, Lake branch at  $70^{\circ}$  chains. From O. east cross creek at  $37^{\circ}$  chains. — All the stones referred to in this report were planted at the time of the survey herein described. Except the four stones at the four corners of the section, at A. D. H and K.

Done in the presence of James Braden, Joseph D. Baxter,  
Daniel B. Stephenson, Stephen Packer & others;

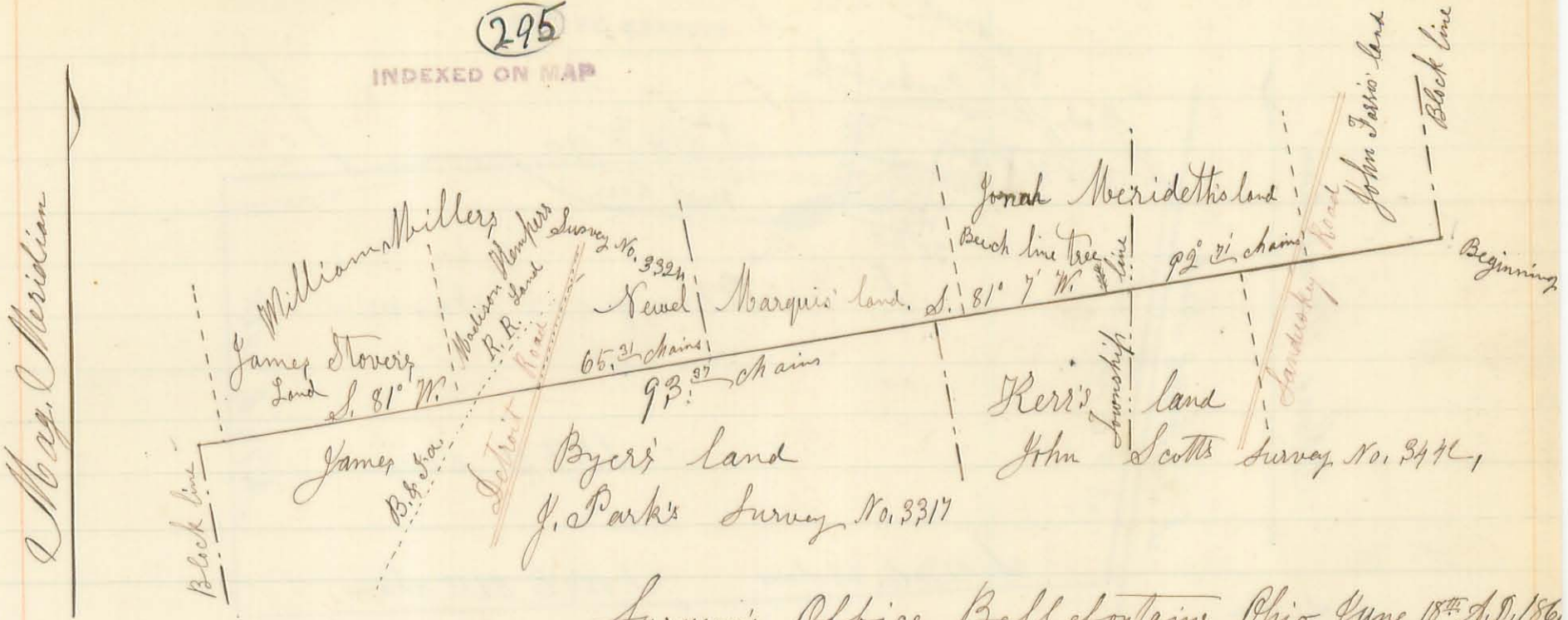
James Braden &  
Daniel B. Stephenson } Chain Men — Henry C. Moore, County Surveyor  
of Logan County Ohio







INDEXED ON MAP



Scale  
 20 Chains to an  
 Inch

Surveyor's Office Bellefontaine Ohio June 18<sup>th</sup> A.D. 1861.

The above Plot is a representation of the south line of L. Yancy's Original Virginia Military Survey No. 3322; and the north line of J. Park's, C. V. M. Survey, No. 3317, in Rushcreek and Lake Townships of Logan County & State of Ohio as Surveyed by me H. C. Moore, County Surveyor in and for said County, on the 20<sup>th</sup> & 21<sup>st</sup> days of April A.D. 1861, at the request of John Kerr, James Byers & others, for the purpose of establishing said lines & planting various corners therein hereinafter referred to: viz: Beginning at a Lym tree 22 Ln. Dir. at the S.E. corner of said Yancy's said Survey, No. 3322, from which an Ash 24 Ln. Dir. bears N. 71° W. 16 links; & a Beech 20 Ln. Dir. S. 87½ E. 13 links, All three of said trees being corner marked as the original corner trees to said Survey: Thence with the south line of Yancy's said Survey S. 87° 7' W., at 17.25 chains planted a stone as corner between John Farris & Jonah Merideth: Cross Sandusky road at 18.53 chains; at 26.44 chains planted a stone & brick as N.E. corner to John & Andrew Kerr's land in Scott's Survey; Cross Township line at 37.22 chains; at 42.30 chains pass a Beech line tree marked 61 years ago, that is, there is 61 years growth of wood over the ax marks, the tree being now green; At 64.65 chains set a stone and brick as corner between Scott's Survey No. 3442, & J. Park's Survey No. 3317, from which a Hickory 21 Ln. Dir. S. 4° W. 11 links is corner marked, a rotten sugar stump N. 10° E. 8 links, & a Hickory stump S. 22° W. 12 links: (Said to be the stumps of original corner trees.) At 92.71 chains set a stone as corner between Yancy's Survey No. 3322, & Wm. Miller's Survey No. 3324; find none of the original corner trees here. Thence with the south line of said Miller's Survey 3324 S. 81° W., plant a stone & brick in the centre of the Detroit road, at 21.82 chains, as corner between Newel Marquis & Madison Kemper; Cross B. & O. R.R. track at 30.24 chains; at 32.88 chains plant a stone & brick as corner between Madison Kemper & James Stover; at 62.4 chains pass a stone at James Stover's S.W. corner, at 65.36 chains plant a stone & brick as N.W. corner, to James Byers' land, & N.W. corner to said Park's said Survey No. 3317. Done in presence of John Kerr, Andrew Kerr, James Byers, Madison Kemper, Newel Marquis, Joseph S. Byers, & others.

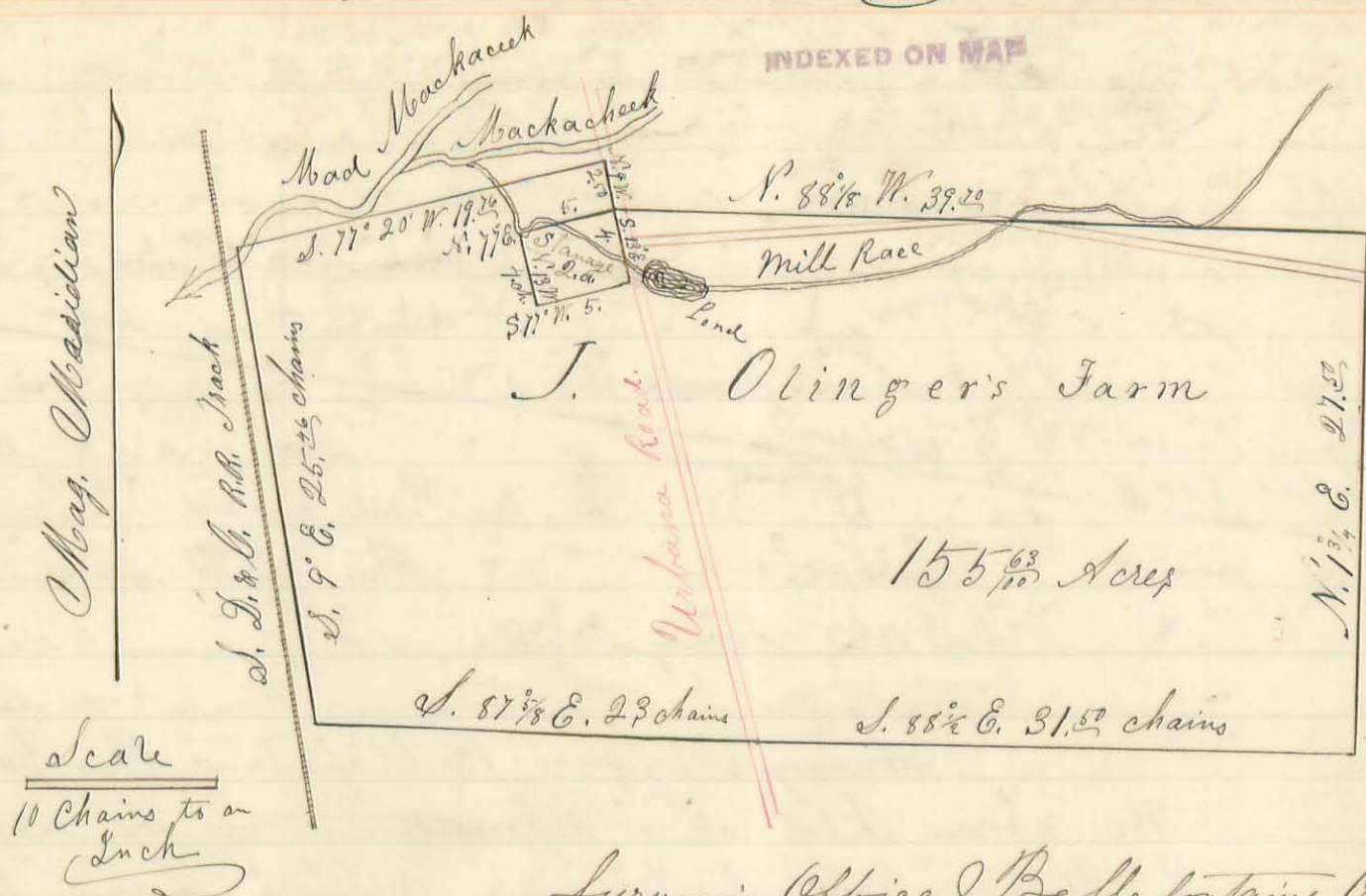
Newel Marquis &  
 Joseph S. Byers } Chain Men } Henry C. Moore, Surveyor of Logan  
 County Ohio



Survey No. 846

(296)

INDEXED ON MAP



Surveyor's Office Bellefontaine Ohio June 21<sup>st</sup> A.D. 1861.

The above Plat represents 155.63 acres of land in the S. E. corner of section No. 27 of Town No. 5, & Range No. 13, M. R. 3, in Liberty Township of Logan County Ohio, as surveyed by the subscriber on the 23<sup>rd</sup> day of Feb. 1861, at the request of J. M. Glover, Beginning at a stake at the South East corner of said section (The original witness trees not found) Thence with the East line of said section N. 1 1/4 E. 27.52 chains passing a stone in the angle of a road at the westerly corner between J. Enock & A. S. Piatt at 15.00 chains, to a stake, a Bur Oak & N. 1 1/2 E. 2 1/2 links & a Bur Oak & N. 42 E. 8 links; Thence N. 88 1/2 W. 39.20 chains, crossing a mill race at 18.02 chains, to a stake at the N. E. corner of James Stanager's lot of two acres, on the west side of the Urbana Road; Thence with the East line of said lot S. 13 E. 4 chains, crossing said mill race 2.25 chains to a fence post at the S. E. corner of said lot of two acres; Thence S. 77 W. 5.00 chains to a stake; Thence N. 13 W. 4 chains to a stake in the tail race below Stanager's Woolen Mill; Thence N. 77 E. 5 chains to the said stake at the N. E. corner of said two acre lot; Thence N. 9 W. 2.00 chains to a stake in the Urbana Road; Thence S. 77 20' W. 19.25 chains, to a stone & stake near the north bank of Mad river, and in the east side of the S. D. & C. R. R. grounds, or 50 feet east of from the centre of said R. R. track; Thence with the east side of said R. R. grounds S. 9 E. 25.46 chains, crossing Mad River to a stake in the south line of said Section. Thence with said line S. 87 3/4 E. 23.00 chains to the centre of the Urbana road; Thence continuing with said south line of the Section S. 88 1/2 E. 31.52 chains to the place of beginning containing 155.63 acres of land.

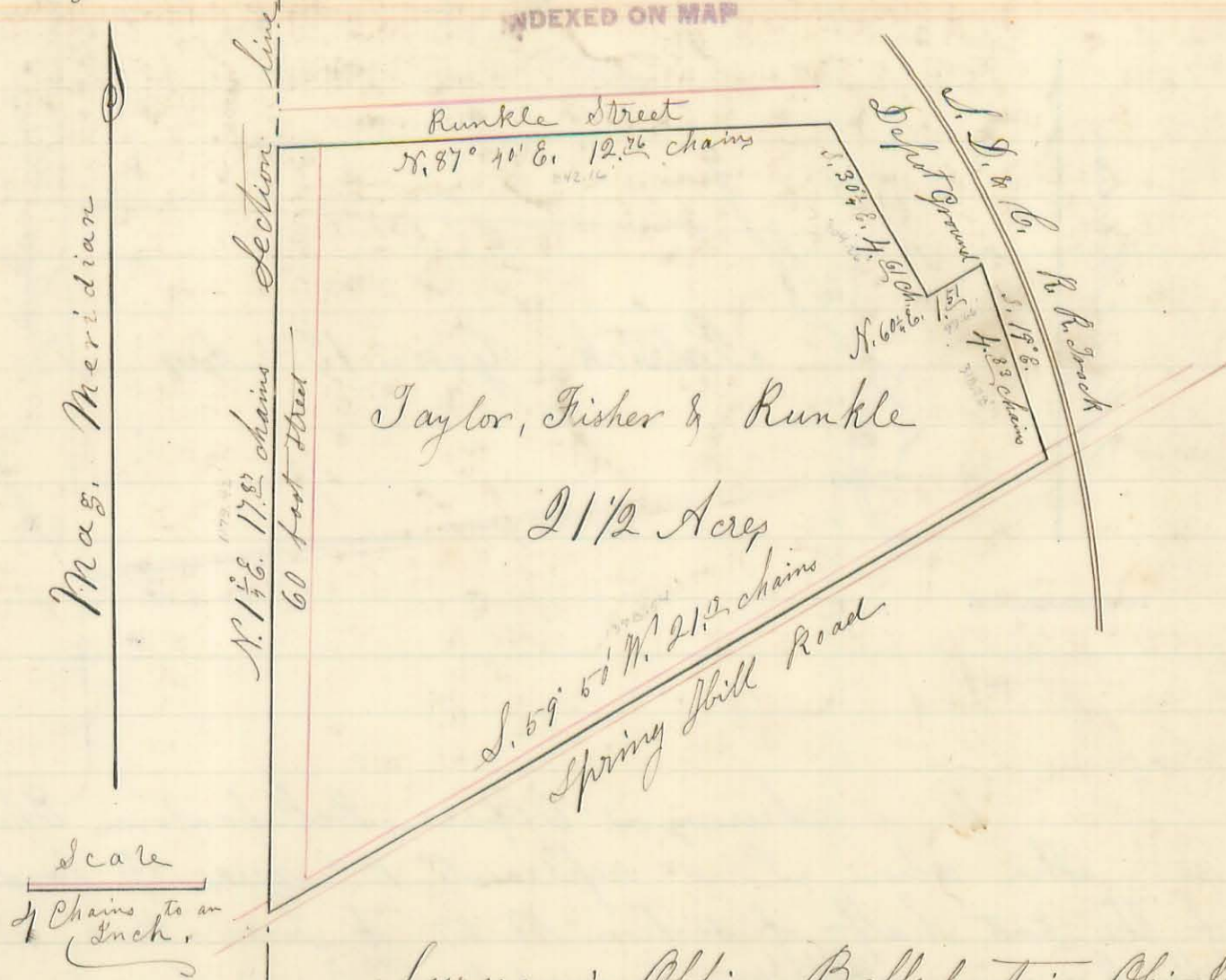
J. M. Glover  
 J. Olinger } Chain Men  
 William Shoemaker, Playman & Barker  
 Henry C. Moore, Co. Sur. Lo. Co. Ohio



Survey No. 847

(297)

INDEXED ON MAP



Surveyor's Office Bellefontaine Ohio June 22<sup>nd</sup> 1861.

The above Plat represents 2 1/2 acres of land in the N.W. part of the S.W. Quarter of Section No. 27, of Town No. 5, & Range No. 13, in Liberty Township of Logan County & State of Ohio, as surveyed by the subscriber on the 16<sup>th</sup> day of March 1861, at the request of John M. Glover.

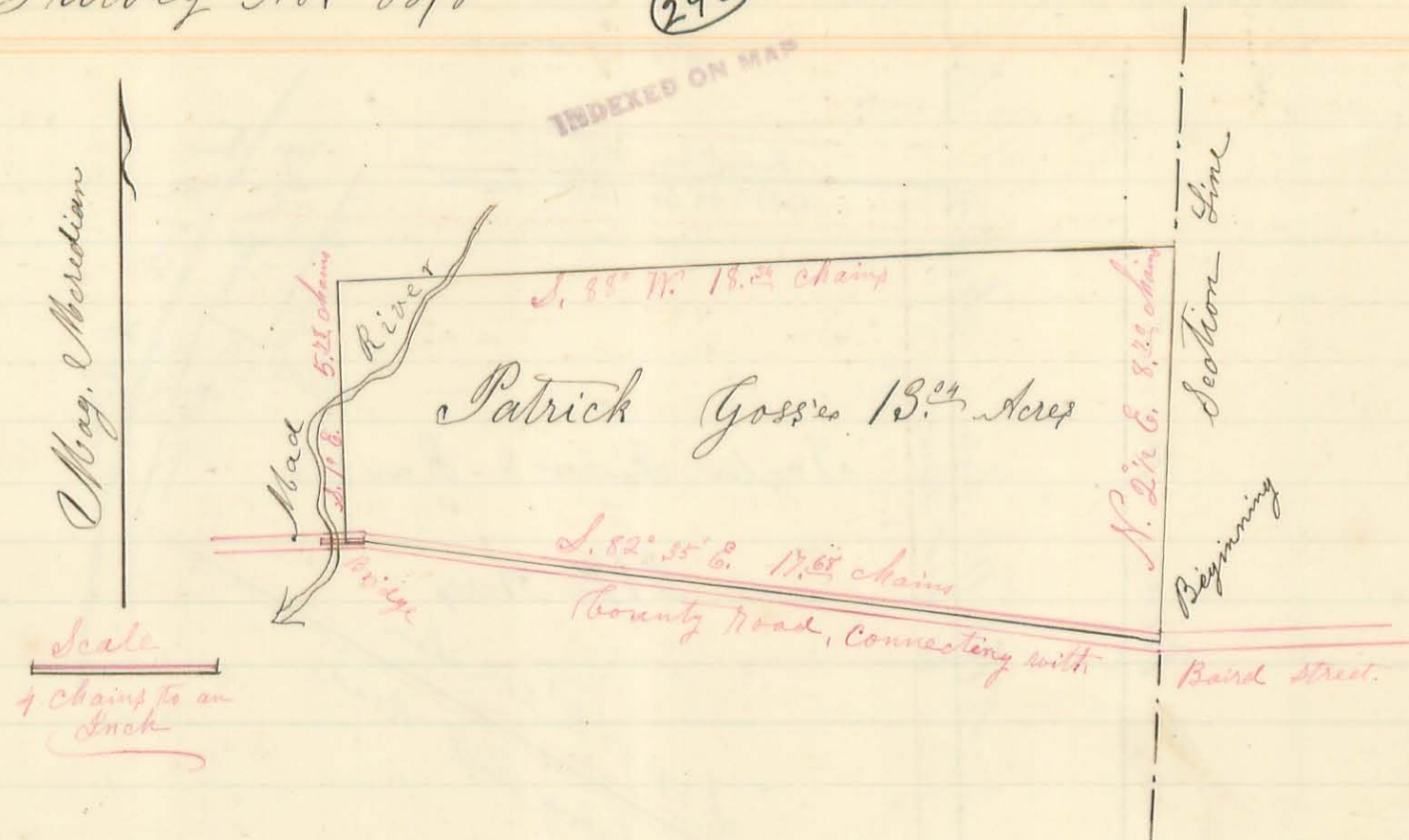
Beginning, at a stake in the west line of said section and in the south line or side of Runkle street of Miller's third addition to the town of West Liberty; Thence with the south side of said street N. 87° 40' E. 12.76 chains to a stake in the west side of the S. D. & C. R. R. Depot Grounds; Thence with the west line of said Depot grounds S. 30 1/4° E. 4.63 chains to the S.W. corner of said Depot Grounds; Thence with the south line thereof N. 60 1/4° E. 1.57 chains to a stake in the west side of the way right of said R.R. Thence with the west side of said way right S. 19° E. 4.83 chains to a stake in the centre of a County road leading to Spring Hills; Thence with said road S. 59° 50' W. 21.9 chains to a stake in the west line of said section; Thence with said line N. 1 1/4° E. 17.83 chains to the place of beginning, containing 2 1/2 acres of land, including a sixty foot street across the west side thereof, & along the said section line.

J. M. Glover & }  
 Thomas Kendle } Chainmen  
 Henry C. Moore }  
 60<sup>th</sup> Sur. Logan County Ohio



Survey No. 848

298



Surveyor's Office, Bellefontaine Ohio June 22<sup>d</sup>/1861

The above Plat represents 13.00 acres of land, being a part of the East half of section No. 27, of Town No. 5, and Range No. 13, N. R. 1, in Liberty Township of Logan County and State of Ohio, as Surveyed by the subscriber on the 16<sup>th</sup> day of March A. D. 1861, at the request of John M. Glover. Beginning at a stake in the East line of said Section No. 27, and in the centre of the Gravel & Pike County road, thence with said east line N. 2 1/2° E. 8.33 chains to a stake from which a double wild cherry each fork 15 Inches in diameter bears N. 78° W. 35 links. Thence S. 88° W. 18.23 chains, crossing Mad River to a stake; Thence S. 1/2° E. 5.33 chains, crossing said river at 2.50 chains to a stake under the middle of the bridge over Mad River, on the County road connecting with Baird Street of West Liberty, Thence with said road N. 88° E. 35 links to a stake at the middle of the east end of said bridge, & in an angle of said road; Thence with the said road S. 82° 35' E. 17.68 chains to the place of beginning, Containing 13.00 acres of land.

J. M. Glover & }  
Thomas Hensell } Chain Men

Patrick Goss, Marker,

Henry C. Moore, Co. Sur. Lo. Co. Ohio

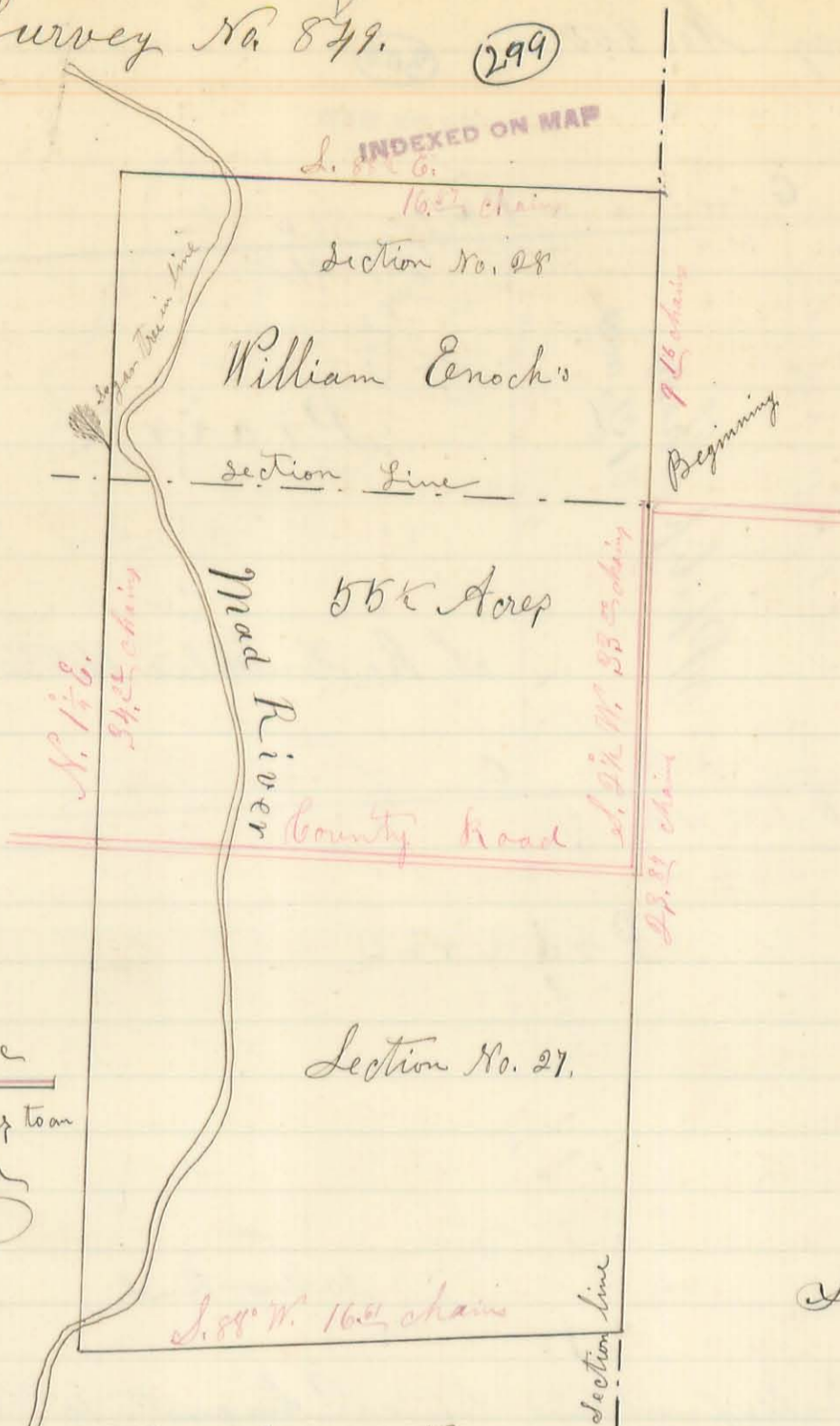


Survey No. 849.

(299)

Mag. Meridian

Scale  
5 chains to an  
Inch



Surveyor's Office Bellefontaine O.  
June 24<sup>th</sup> A.D. 1861.

The above Plat represents 55 1/2 acres of land, a part in the N.E. corner of the N.E. quarter of section No. 27 of Town No. 5, & Range No. 13, & a part in the S.E. quarter corner of the S.E. quarter of section No. 28 of the same Town & Range, No. R's. being in Liberty Township of Logan County & State of Ohio, as Surveyed by the subscriber at the request of John M. Glover, on the 24<sup>th</sup> day of May A.D. 1861.

Beginning at a stone at the N.E. corner of said section No. 27 and the S.E. corner of said section No. 28, thence with the East line of said section No. 27, S. 2 1/2 W. 23.53 chains, passing the angle of a road at 10.53 chains to a stake at the N.E. corner of Patrick Gosse's land from which a double Wild Cherry, each fork 15 inches in Diameter bears N. 78° W. 35 links; thence with said Gosse's North line S. 88° W. 16.52 chains to a stake.

Thence N. 2 1/4 E. 34.44 chains, crossing Mad River at 7 1/2 links, the aforesaid Road at 14.53 chains, and passing a large sugar tree near a bend of said river, to a stake; thence S. 88 1/2 E. 16.52 chains, crossing Mad River at 3 chains, to a stake in the East line of said section No. 28; thence with said east line of section No. 28, S. 2 1/4 W. 9.16 chains to the place of beginning, Containing 55 1/2 acres of Land.

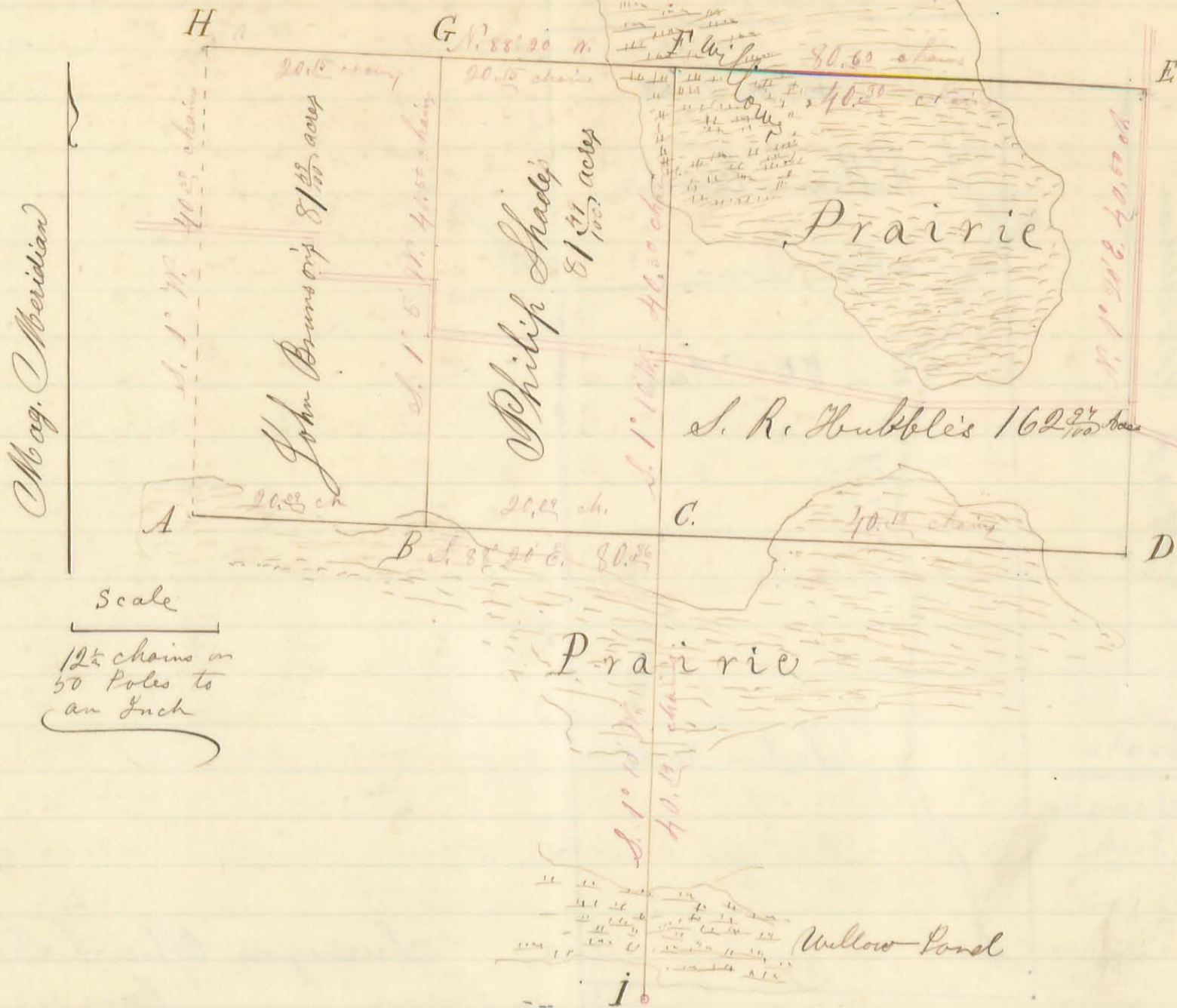
John M. Glover & }  
William Enoch } Chain Men

John Gribble, layman & marker,

Henry C. Moore, County Surveyor of Logan  
County Ohio



INDEXED ON MAP



Surveyor's Office Bellefontaine Ohio August 15<sup>th</sup> A. D. 1861  
 The above Plat is a representation of the North half of section No. Six (6) of Town No. 2, and Range No. 14, E. G. M. R. in Washington Township of Logan County & State of Ohio, as Surveyed by me, H. C. Moose, Co. Sur. of said County; on the 13<sup>th</sup> & 14<sup>th</sup> days of August A. D. 1861, at the request of S. R. Hubble & al; — The bearing & distance of each line is marked thereon with red ink (distances in chains & hundredths) — The name of the owner, together with the area of each subdivision, is written thereon. — The continued black lines represent the lines actually run & measured — The broken black line (on the west) was computed, both bearing & distance. The monuments at the corners are as follows. — At A, B, C, D, E, F, ~~G~~ & H each a stone, at G & I. each a stake.

In running the ~~the~~ north line of the section from E, toward the west, pass an Origin line tree at 5 chains; one (Blocked) at 5.23 chains 24 inches in diameter; pass the south side of one at about 47.53 ch. & the N. side of another at about 52.33 chains, (Blocked & found to have been marked 58 years ago) also <sup>pass</sup> near several other original line trees west of the Prairie.

Done in presence of S. R. Hubble, John Brunson son  
 Philip Shade, James B. Mc Kinnon and the Chain Men  
 James Mc Kinley }  
 Anthony W. Shultz } Chain Men  
 H. C. Moose Co. Sur. Logan Co. Ohio

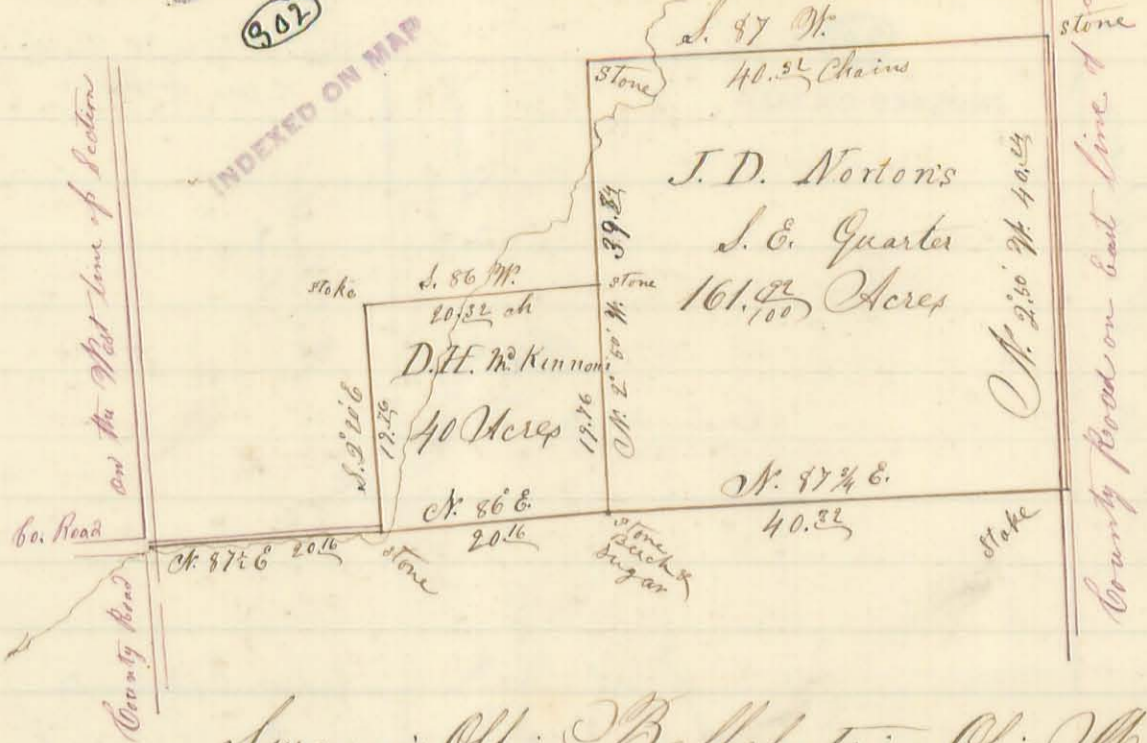
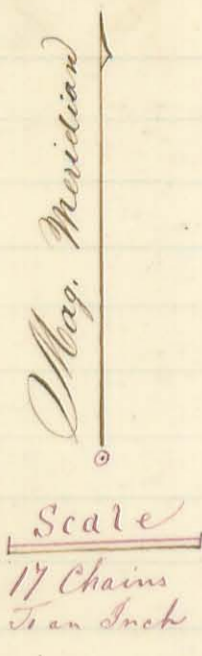






Survey No. 852,  
See Drawer R

302



INDEXED ON MAP

Surveyor's Office Bellefontaine Ohio March 18<sup>th</sup> A.D. 1863

The above Plat is a representation of a part of section No. 3, of Town No. 1, and Range No. 8 east, in Pleasant Township of Logan Co. & as surveyed by me Henry C. Moore, the County Surveyor in and for said county, on the 12<sup>th</sup> & 13<sup>th</sup> days of March A.D. 1863, at the request of Daniel Mc Kinnon and Jonathan Dean Norton, for the purpose of establishing the lines and corners of the S.E. Quarter for said Norton; and of 40 acres off the south end of the east half of the S.W. quarter for said Mc Kinnon. After making the necessary examination, I find the south line of said section to have been originally marked crooked, finding some of the original marked line trees yet standing and living.

Beginning at a stake at the South West corner of said section, in a County road, and in the N.W. bank of a small branch, from which a small stone bears N. 2 1/4 W. 22 1/2 links, Thence N. 87 1/4 E. 20.22 chains to a stone in the middle of the south line of the S.W. quarter; Thence N. 86 E. 20.26 chains to a stone in the middle of the south line of the section, a Beech 10 in. Dia. S. 46 E. 21 links, a Sugar 5 in. Dia. S. 77 W. 5 links: (No sign whatever of the original witness trees here.) Thence N. 87 1/4 E. 40.22 chains to a stake at the south east corner of the section, and in a County Road: Thence with the east line of said section, and said road N. 2° 50' W. 40.24 chains to a stone in the middle of the said east line, Thence S. 87° W. 40.22 chains with a county road, to a stone at the centre corner of the section, Thence S. 2° 50' E. 39.24 chains to the stone, Beech & Sugar in the middle of the south line of the section, and find the S.E. Qr. to contain 161.22 Acres.

S.E. Qr. ?

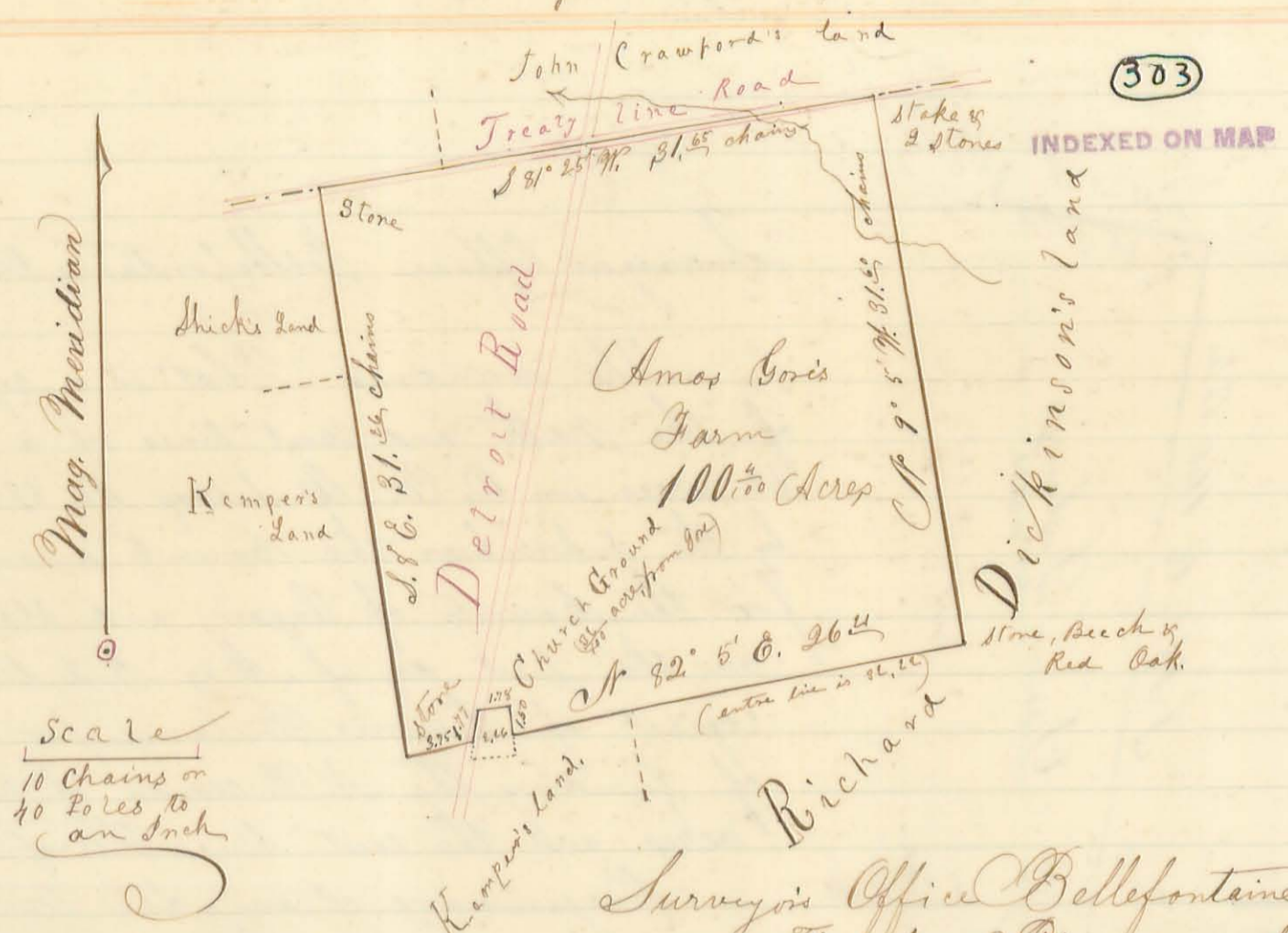
40 Acres ?

Beginning at said stone, Beech and Sugar in the south line, run with the line between the S.E. & S.W. Quarters N. 2° 50' W. 19.26 chains to a stone, from which a Black Hickory 6 in. Dia. bears N. 61 1/2 W. 3 links and an Ash 10 in. Dia. S. 36.27 links, Thence S. 86 W. 20.26 chains to a stake in the line between the east & west halves of the S.W. Qr. of said section, from which a stone bears N. 86 E. 38 links and from said stone a Beech 12 in. Dia. S. 24 W. 8 1/2 links Thence with said line between said halves of the S.W. Qr. S. 2° 30' E. 19.26 chains to the aforesaid stone in the middle of the south line of the S.W. Qr. from which another stone bears S. 2° 10' W. 22 1/2 links, Thence with said south line to the half mile corner, making 40 acres off the south end of the East half of the S.W. Qr. as aforesaid; Other lines such as were necessary to determine the correctness of the above were also run and measured.

Joshua U. Cheever } Done in presence of the chain men and said Mc Kinnon  
 Charles C. ... } Norton and others; Who to Moore be...



Survey No. 859



Surveyor's Office Bellefontaine O. May 5<sup>th</sup> 1868.

The above Plat is a representation of 100<sup>3/100</sup> acres of land in Original Virginia Military Survey No. 33<sup>22</sup>, in Lake Township of Logan County and State of Ohio as Surveyed on the first day of May A.D. 1863, by the subscriber, the County Surveyor in and for said county, at the request of Amos Gore, for the purpose of establishing the lines and corners thereof - Beginning at a long line stone, planted at the N. W. corner of said survey, and in the old Greenville Treaty line and a County Road, Thence with the west line of said survey S. 81° 25' W. 31.65 chains passing several Original line trees, to a flat long line stone; Thence N. 82° 5' E. 26.24 chains to a stake in the Detroit road & in the west line of the Church Ground belonging to the M. C. Church; Thence with said Road & west line of the Church lot N. 12° E. 1.22 chains to a stake N. W. corner to said Church lot. Thence with the North line of said lot N. 86° E. 1.28 chains to a stake, at N. E. corner of said lot, Thence with the East line of said lot S. 32° E. 11 chains to a stake, corner between Amos Gore and Madison Kemper, Thence N. 82° 5' E. 26.24 chains with the line between said Gore and Kemper and between said Gore and Richard Dickinson, passing several old line trees to a line stone, Black Oak 22 inches in diameter N. 28° E. 13 links, a Beech 20 inches diameter S. 10° W. 13 links Thence with the line between said Gore and said Dickinson N. 9° 5' W. 31.55 chains passing several old line trees, and crossing a branch to a stake in the old Greenville Treaty line and County road, Stone S. 9° 5' E. 30 links, and a rock stone N. 9° 5' W. 30 links, Thence with said line and road S. 81° 25' W. 31.65 chains, crossing a branch at 68 chains, and the Detroit Road at 16.25 chains to the beginning containing 100<sup>3/100</sup> acres, aside from <sup>32</sup>/<sub>100</sub> of an acre in the Church Ground aforesaid, taken from said Gore's land -

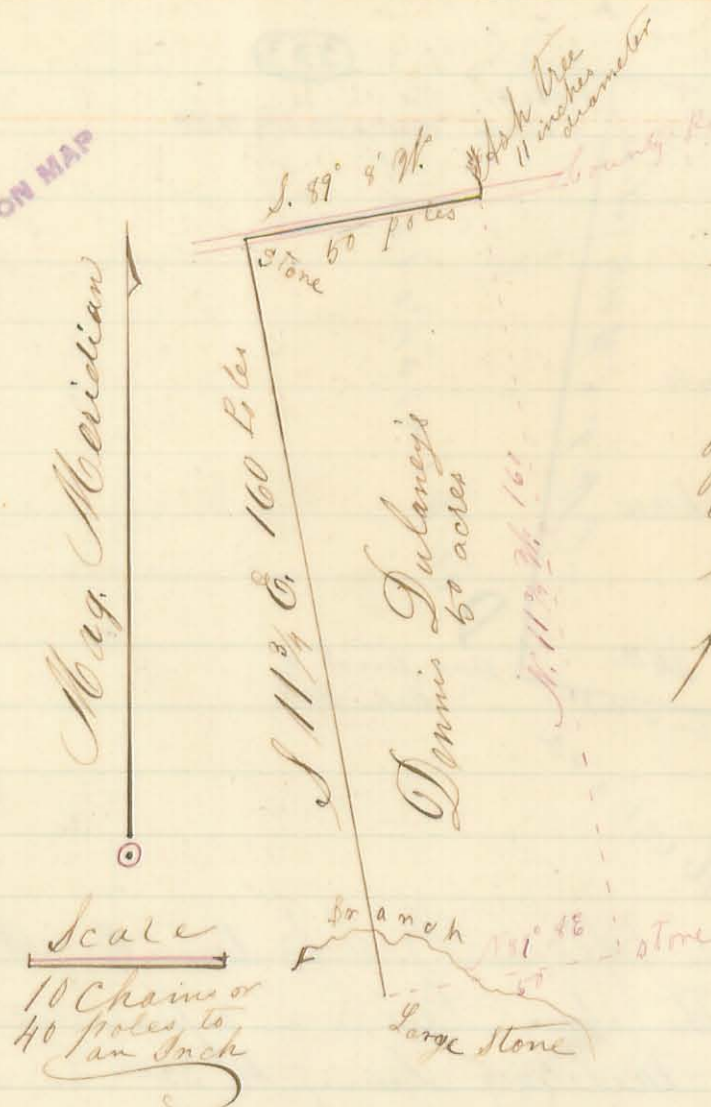
Dennis Suloney  
 Peter Prime } Chain Carriers  
 Done in presence of the Chain Carriers, Amos Gore, Madison  
 Kemper Richard Dickinson and Shicks.  
 Henry C. Moose, County Surveyor  
 Logan County Ohio



Survey No. 854.

304

INDEXED ON MAP



Surveyor's Office Bellefontaine Ohio May 5<sup>th</sup> 1862

The annexed Plot is a representation of the north and west lines of a tract of 50 acres in O. V. M. Survey No. 8984 as surveyed by the subscriber the County Surveyor in and for the County of Logan and State of Ohio on the first day of May A. D. 1862, at the request of Dennis Dulaney, for the purpose of finding the N. W. corner of said 50 acres, and the west line thereof -

Beginning at an Ash tree 11 inches in diameter in the north line of said survey, and N. E. corner to said 50 acres run thence with the said N. line S. 89° 8' W.

50 poles to a rock stone: Thence S. 11 1/4° E. 160 poles, crossing a small Branch to a large rock stone at the S. W. corner of said 50 acres.

(The broken red lines were run and measured heretofore by the same Surveyor) Amos Gore

H. C. Moore } Chain Men

Done in presence of Dennis Dulaney, Joseph Kerr and the Chain Men -

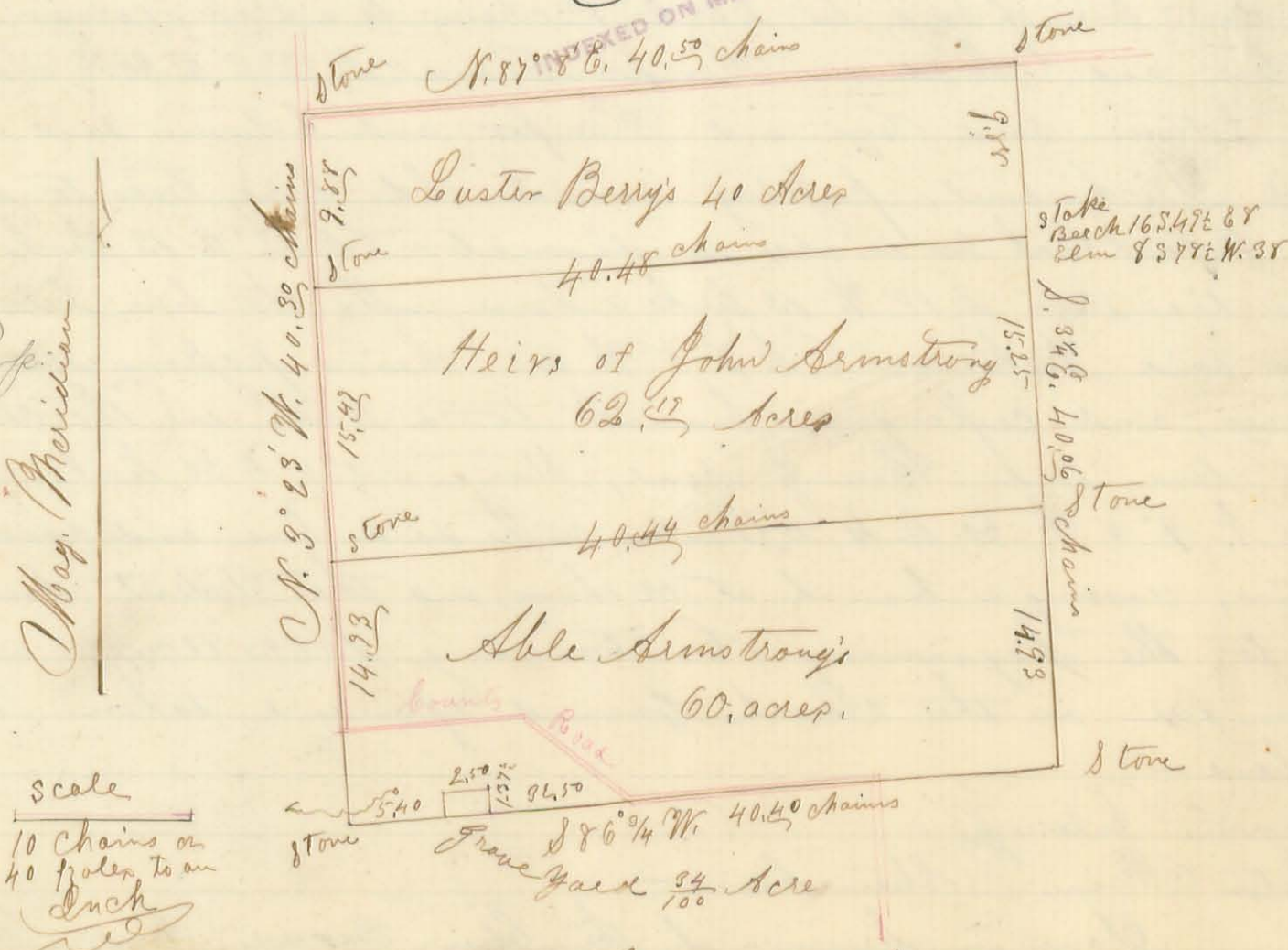
Henry C. Moore, Co. Sur. Logan Co. Ohio

Survey No. 855.

305

INDEXED ON MAP

Pleasant Prof.



Surveyor's Office, Bellefontaine Ohio May 24<sup>th</sup> 1862

The above Plot is a representation of the S. W. Quarter of Section No. 15. of Town No. 1, and Range No. 8 East, as surveyed by me (Pleasant Prof.)



Surveyor in and for said County on the 21<sup>st</sup> day of May 1863, at the request of Allen Jones, as Executor of John Armstrong, late of said County dec'd. for the purpose of establishing the lines and corners of that portion of said quarter belonging to the heirs of said John Armstrong, together with the area, and proper description thereof, =

The length and bearing of the respective lines &c. are marked on the above Plat. - The description of the land belonging to said heirs is as follows = Being all of said S. W. Quarter, of Section No. 15, of Town One, & Range 8 East, except Forty acres off of the North side of said quarter, owned by the heirs of Luster Berry; and 60.34 acres off of the South side thereof, granted to Able Armstrong, including a grave yard of  $\frac{34}{100}$  of an acre:

Commencing at a stone in the west line of said quarter at the South West corner of said Berry's 40 acre, and 9.85 chains south of a stone at the N. W. corner of said quarter; Thence parallel with the N. line of the quarter N. 87° 8' E. 40.45 chains to a stake in the East line of the quarter from which a beech 16 inches in diameter bears S. 49 1/2° E. 8 links, & an Elm 8 inches in diameter S. 78 1/2° W. 38 links; Thence with the said East line South 3/4 E. 15.25 chains to a stone at Able Armstrong's N. E. corner and 14.23 chain north of a stone at the S. E. corner of of said quarter; Thence parallel with the South line of the said section S. 86 1/4° W. 40.44 chains to a stone in the west line of the said section, and at the said Able Armstrong's N. W. corner;

Thence with the said west line N. 3° E. W. 15.33 chains to the place of Beginning, containing Sixty two acres, and nineteen hundredths of an acre (62.19 acres)

Done in presence of Allen Jones, Able Armstrong, Isaac Baughman, and the Chain Men.

Francis M. Jones & James C. Wilson } Chain Men,

I hereby certify that the foregoing Plat & report are correct. D. C. Moose, County Surveyor L. S. O.

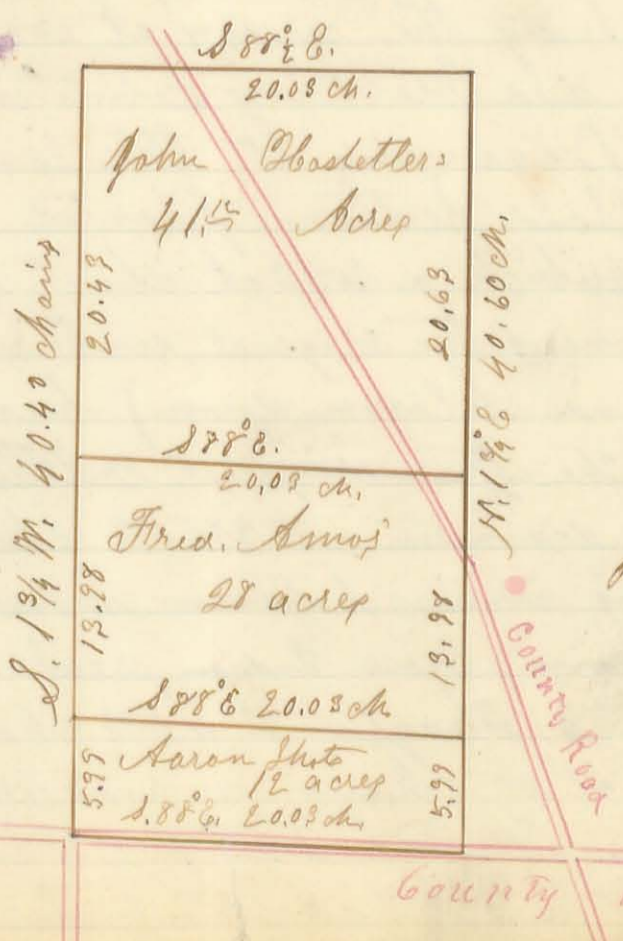
Survey No. 856

306

INDEXED ON MAP

Mag. Meridian

scale 10 chains or 40 poles to an inch



Surveyor's Office Bellefontaine Ohio July 4<sup>th</sup> 1863.

The above Plat is a Representation of the west half of the N. W. quarter of section 5 of Town 2, & Range 14 N. 10<sup>th</sup> in Logan County Ohio as Surveyed on the 16<sup>th</sup> day of June A. S. 1863 by the subscriber, County Surveyor of Logan County Ohio at the request of John Obstedter, for the purpose of establishing the lines and corners thereof & subdividing the same as per deeds of ownership thereof; Beginning at the N. W. corner of the said



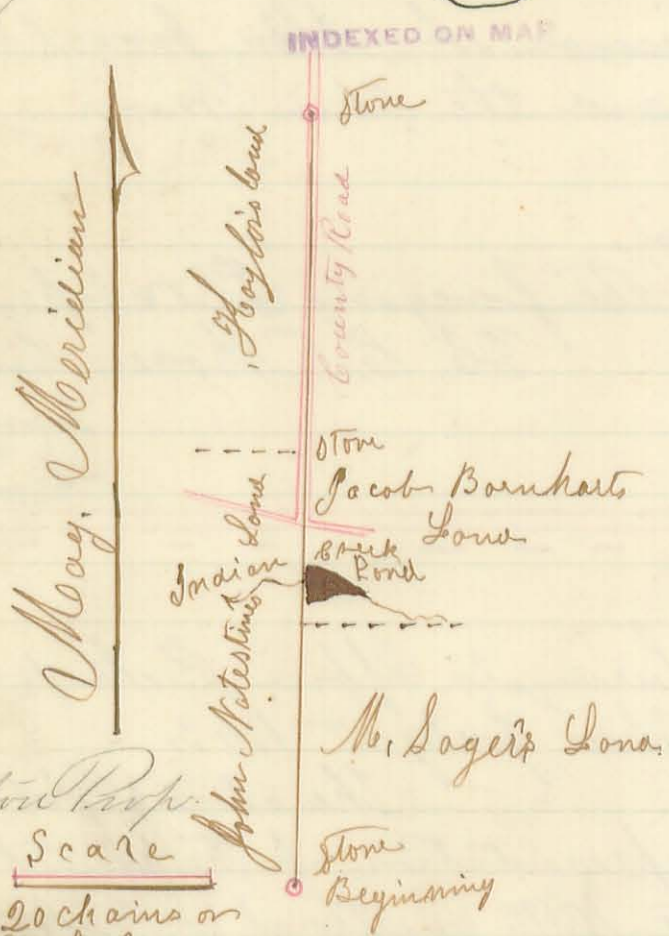
Section, set a stone from which the stump of an original witness tree bears N. 26° W. 24 links; (The other not to be found) Thence with the west line of the section S. 1 3/4 W. 40.42 chains, to the 1/2 mile corner; (The original witness tree not to be found) In digging here to set the corner stone, dug on to the old corner stone, set another on top of it, & in the Road; Thence with the South line of the quarter or a County road S. 85° E. 20.03 chains to a Stone in the middle of the south line of said quarter; Thence N. 1 3/4 W. 40.60 chains to a stone in the middle of the north line of said quarter; Thence with the North line of the section N. 88° W. 20.22 chains to the beginning & find the same to contain 81 1/2 acres! Then measured 12 acres off the south end thereof 5.22 chains wide to Aaron Shot; and 2.8 acres more north of it, 13.28 chains wide to Fred. Amos planting a stone at each corner thereof, Thus leaving to said Hostetter 41 1/2 acres in the north part thereof.

Done in Presence of John Hostetter, Fred Amos, Henry Smith, J. Moore & the Chain Men.  
 Daniel Gates  
 Henry Hostetter } Chain Men.

H. C. Moore  
 Co. Sur. Lo. Co. O.

Survey  
 N. 857

(307)



Surveyor's Office Bellefontaine Ohio July 4th 1863  
 The above Plat is a representation of the East line of Fractional section No. 17 of Town No. 2, and Range No. 14 Mc. R. in Logan County Ohio, as Surveyed on the 17th day of June A. D. 1863, by the Subscriber, County Surveyor of Logan County Ohio; at the request of John Hostetter; for the purpose of finding and establishing the corner at each end of said line and marking points in said line viz; Beginning at the South East corner of said section, planted a stone from which a w. Oak about 4 1/2 feet in diameter (one of the original witness trees; now dead and blown down) bears S. 63° W. 27 links (The other original witness not to be found)

Marked a W. Oak 8 inches diameter N. 27 1/2 W. 16 links. Thence run the line N. 1° 35' E. passing corner between Moses Sager & Jacob Bornhart (on the E.) at 27.44 chains; cross Indian creek at 31.25 chains; a stone corner between Hostetter & Haylor at 45.22 chains; and strike the N. E. corner of section at 80 chains or one mile; at which set a stone from which a W. Oak stump 2 1/2 inches in diameter bears N. 36° E. 26 links, & a Black Oak stump somewhat rotten & about 26 inches in diameter S. 41° W. 24 links

Washington Prop.  
 Scale  
 20 chains or  
 70 poles  
 to an inch



the stumps of the original witness trees to this corner, Done in presence of Moses Sayer, Jacob Barnhart, John Wateline, John Haylor and others,

John Haylor }  
Moses Sayer } Chain Men

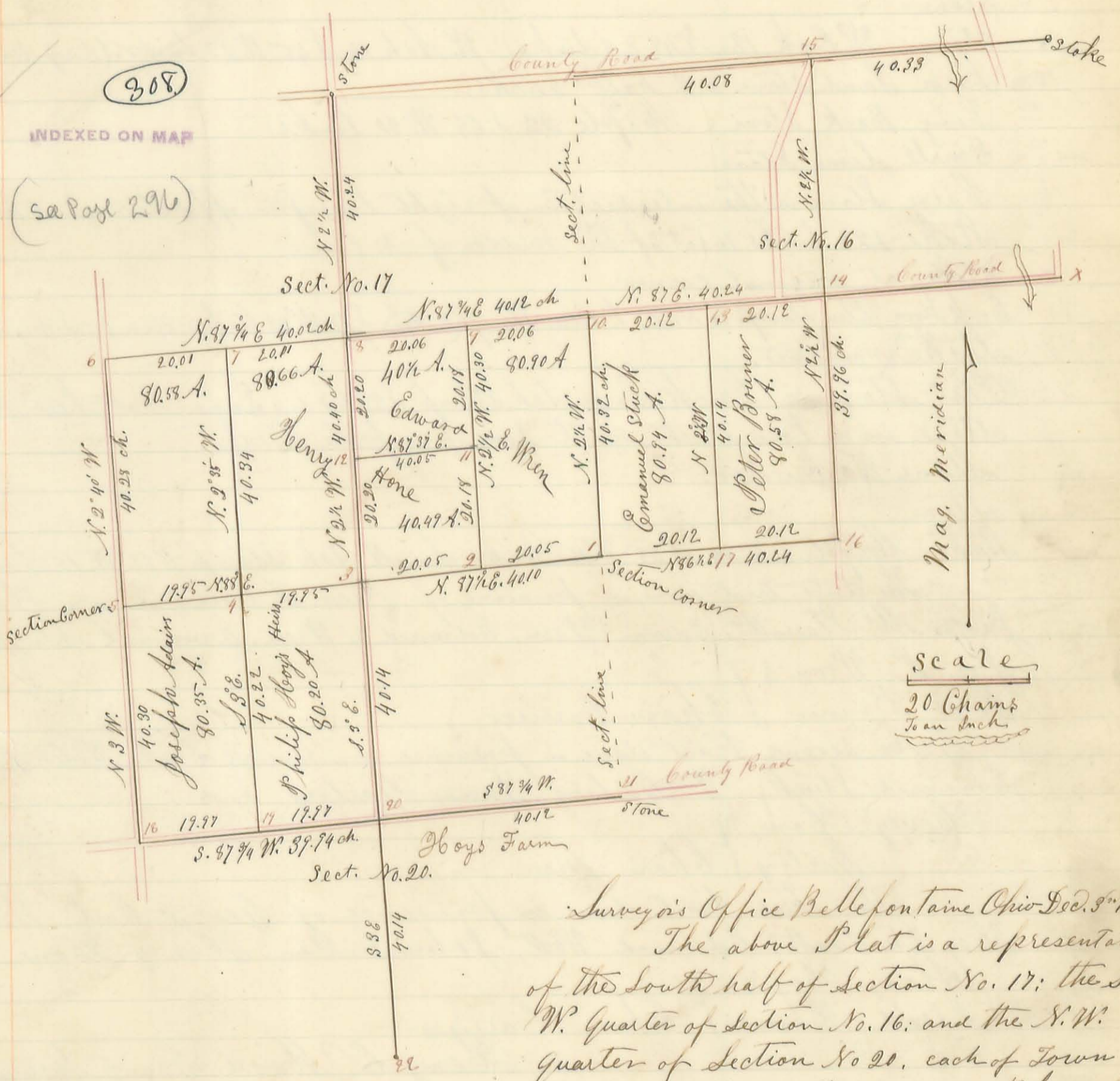
H. C. Moore Co. Surv.  
Logan Co. Ohio

urvey  
8 958

308

INDEXED ON MAP

(see Page 296)



Surveyor's Office Bellefontaine Ohio Dec. 9<sup>th</sup> 1863  
The above Plat is a representation of the South half of Section No. 17; the S. W. Quarter of Section No. 16; and the S. W. Quarter of Section No. 20, each of Town No. 7. South, Range No. 8 East, in Bloomfield

Township of Logan County Ohio, as Surveyed by me, Henry C. Moore, County Surveyor of said County: = the first tract on the 19<sup>th</sup> & 21<sup>st</sup> days of November A.D. 1863, at the request of Henry Home Esqr.; The second tract on the 20<sup>th</sup> day of November A.D. 1863, at the request of Peter Bruner & Emanuel Stuck; and the third tract on the 21<sup>st</sup> day of November A.D. 1863 at the request of Wilson Hoy, each for the purpose of establishing the lines and corners of the tract and the subdivisions thereof together with the areas of the subdivisions.

The length & bearing of each line, and the areas of the subdivisions are sufficiently represented on said Plat:

The parallel red lines represent county Roads:



The monuments at the corners are as follows. viz:

- A.1 = (Being the S.E. corner of sec. 17) A. Large Rock Stone & 4 pieces of brick: The Roots of a Beech (orig wit.) N. 40 W. 45 links: The other not found.
- 2 = Rock Stone & 2 pieces of brick = Lynn 20 S 40 W. 7 links: Hickory 5 S. 57 E. 6 1/2 link
- 3 = Stone & 2 half brick = Walnut stump 30 N. 65 E. 12 l. W. Oak stump 14 S 49 W. 30 (Orig.) B. Oak 22 S 89 W. 65 l. (no)
- 4 = Stone & 3 pieces of brick
- 5 = Small Stone & 4 pieces of brick = No trees here now, but find this corner by intersecting <sup>originally marked</sup> E. W. & S. line
- 6 = Stake = Beech stump N. 78 W. 14 links: & B. Oak stump 8 S. 73 E. 30 links.
- 7 = Stone
- 8 = Long lime Stone:
- 9 = Stone:
- 10 = Stone = W. Oak 12 N. 48 E. 8 links: W. Ash 14 S. 45 W. 23 links. (Orig witnesses)
- 11 = Large Sand Stone & 3 half bricks:
- 12 = Long Rock Stone = Maple 22 S. 64 W. 30 links:
- 13 = Small lime Stone
- 14 = Large Stone in the intersection of right lines from opposite original half mile corners.
- 15 = Stake 12 1/2 links west of the middle of N. line
- 16 = Stake at original corner.
- 17 = Rock Stone: Elm stump 10 N. 16 E. 7 l.; Elm stump (Boston) S. 19 W. 33 links; Stumps of original witnesses <sup>(trees)</sup>
- 18 = Stake & Stone:
- 19 = Flat Stone & brick = Large Ash stump S. 28 E. 7 l. (Sugar not here now)
- 20 = Stone in a Pond at the north side of a pole bridge.
- 21 = Stone & brick.
- 22 = Stone.
- 23 = Stake: Maple tree 24 S 38 W 75 links: Small Ash Stump N 13 W. 15 links:

The first tract done in presence of Geo. F. Carl, Henry Bone James M. Starrett, Edwin Wren, Edmund E. Wren, Emanuel Stuck and Jas. P. Wren & }

Peter Bruner } chain carriers

The second tract done in presence of, Geo. F. Carl, Peter Bruner, Emanuel Stuck, Wm. Garling, James Garling and

Henry Bone }  
Garling } chain men

The third tract done in presence of Geo. F. Carl, Wilson Hoy Sr. Pratt, Edmond West, John Dillen, Henry Bone, and

Alonzo Hoy & }  
Israel Hawver } chain carriers.

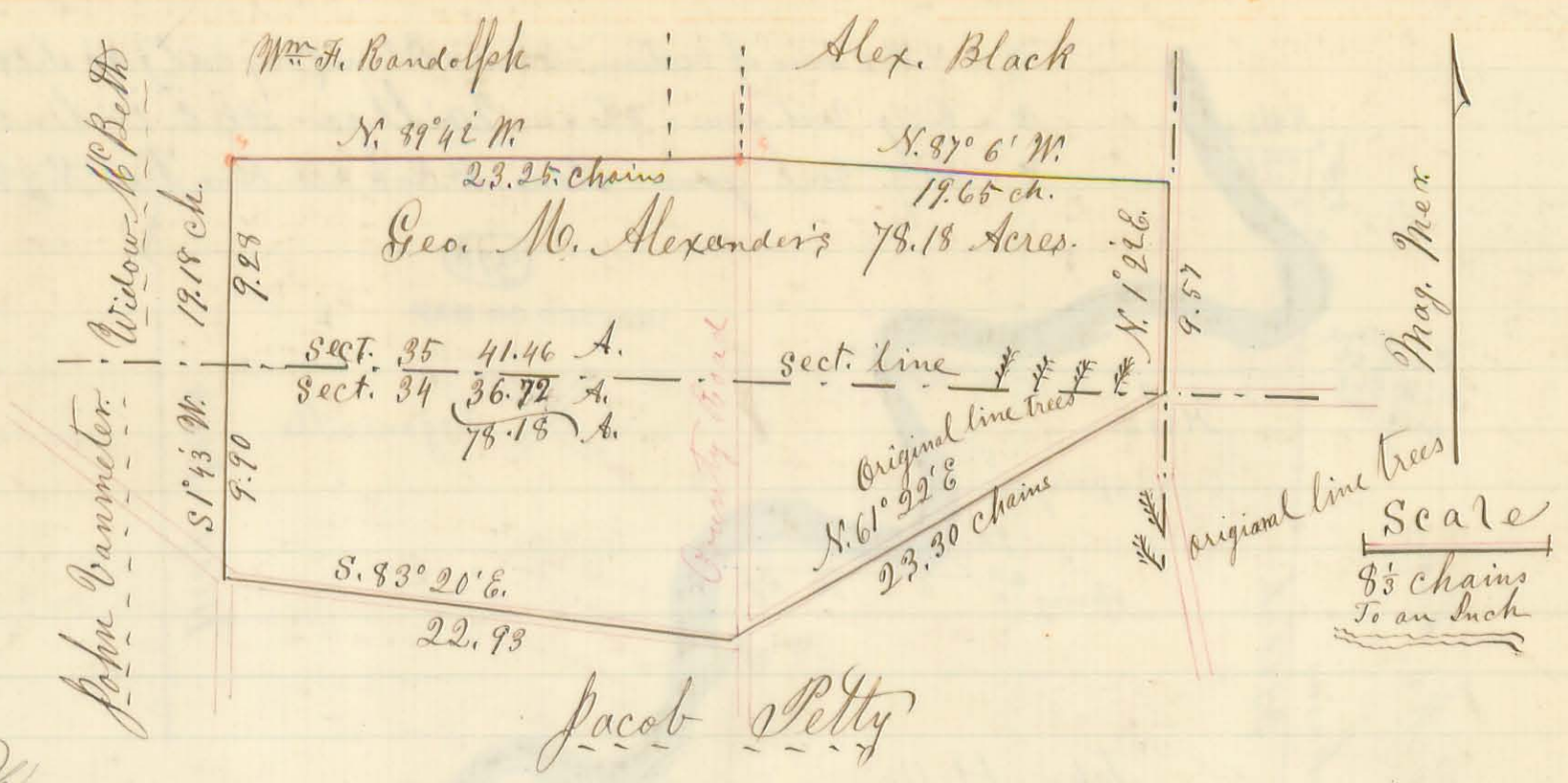
Henry C. Moore County Surveyor  
Logan Co. Ohio.



309

# Survey No. 859.

INDEXED ON MAP



besty Hupp

Surveyor's Office, Bellefontaine O. Dec. 8<sup>th</sup> 1863.

The above Plat is a representation of 41.46 acres of land off the South Side of the S.E. quarter of Section No. 35 of Town No. 5, & Range No. 13; and 36.72 acres off the north side of section No. 34 of Town No. 5, & Range No. 13, in Logan County Ohio, as Surveyed on the 25<sup>th</sup> day of November A.D. 1863 by me, Henry C. Moose, County Surveyor in & for said county, at the request of George M. Alexander for the purpose of establishing the lines & corners to said tracts of land, & ascertaining the true area thereof: Viz: Beginning at the S.E. corner of said Section 35, & N.E. corner to said Section 34 (orig. witness trees now gone,) but find this corner by intersecting the Originally marked lines South & West.) & at a Long Stone in the crossing of two county roads, from which a white oak 36 inches diameter bears N. 49° W. 61 links: Thence with the E. line of said section 35, & the Bellefontaine Road N. 1° 22' E. 9.57 chains to a Large Rock Stone, W. oak 10 S. 20° E. 12 1/2 links: Thence with Alex. Black's South line (old marks on trees) N. 87° 6' W. 19.65 chains to a stone, corner between Alex. Black & Wm. Fisher: W. oak 88° E. links: Thence with the South line of said Fisher & Wm. F. Randolph N. 89° 42' W. 23.25 chains to a stone in the intersection of fences: Thence S. 1° 43' W. 19.18 chains, crossing the section line at 9.23 chains to a Stake, Stone N. 1° 43' E. 11 links: Thence with a County Road S. 83° 20' E. 22.93 chains to a stone: Thence with another Road N. 61° 22' E. 23.30 chains to the Beginning: Containing in all 78.18 acres;

Done in presence of George M. Alexander, Wm. F. Randolph, Jacob Petty and Wm. Fisher } chain men  
 Henry C. Moose  
 County Surveyor Logan Co. O.



# Survey No. 860.





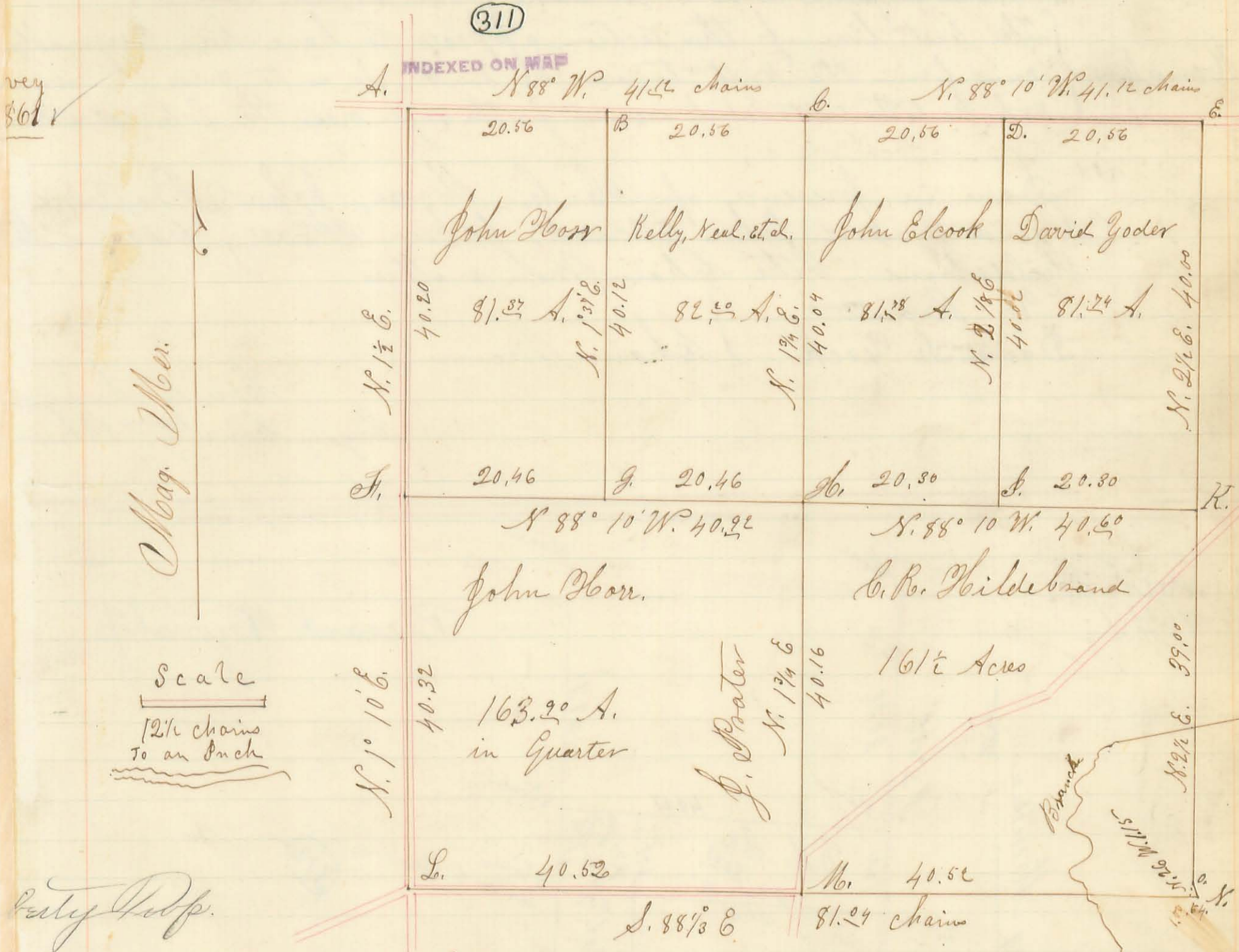
The S.W. corner, is located by the intersection of the original lines, which are well marked.

Running the west line north, cross creek at 13, 16 1/2, & 20 chains respectively - and the state road at 45 chains. The South East corner of the 100 acres is 2 leaning willows from the same Root - stone in the line west 44 links; & from the stone a Cotton wood tree 48 inches in dia, is a N.E. direction 18 links: Done in Presence of Adam Martin, John Hill, Wm Stoutemoyer, Nelson Peck, M.L. Rohrer & the Chain men.

A. J. Knight }  
E. J. Wheeler } Chain Men

H. C. Moore, County Surveyor  
Logan County Ohio

(311)



Surveyor's Office  
Bellefontaine Ohio March 18<sup>th</sup> 1864.

The above Plat represents Section No. 29, of Town No. 5, and Range No. 13 N. R. 3, as Surveyed and subdivided by the subscribers on the 3<sup>rd</sup> & 4<sup>th</sup> days of March A.D. 1864 at the request of John Elcock and others, for the purpose of establishing the lines & corners of said Section, and the subdivisions represented in the above Plat. = The bearings and lengths of the various lines are written by them on the Plat: = Also the area of each subdivision, is written thereon. The monuments at the

reference being made to the Plat by the letters