

To H.S. Dailey:

By the authority vested in me by the Statutes of Ohio, I hereby, as County Surveyor of Logan County, Ohio, appoint you, H.S. Dailey, my Deputy, to do and perform all works, acts, and things pertaining to the office, as required of you by me, as such County Surveyor, and the laws of Ohio. Such appointment to begin on the 5th day of September, 1910 and end on the 4th day of September, 1911.

Charles M. Richey  
County Surveyor of Logan County, Ohio.

State of Ohio, Logan County SS.

H.S. Dailey, being first duly sworn, deposes and says that he will support the Constitution of the United States of America, and of the State of Ohio, and that he will faithfully, honestly and impartially do and perform all the duties required of him by the said County Surveyor of Logan County, Ohio, or the laws of said State of Ohio.

Sworn to before me September 5th 1910. Subscribed in my presence this 16th day of November 1910.  
Harry D. Dailey  
Charles M. Richey, County Surveyor of Logan County, Ohio.

To E.H. Bushong:

By the authority vested in me by the Statutes of Ohio, I hereby, as County Surveyor of Logan County, Ohio, appoint you, E.H. Bushong, my Deputy, to do and perform all works, acts, and things pertaining to the office, as required of you by me, as such County Surveyor, and the laws of Ohio. Such appointment to begin on the 5th day of September, 1910 and end on the 4th day of September 1911.

Charles M. Richey, County Surveyor of Logan County, Ohio.

State of Ohio, Logan County SS.

E.H. Bushong, being first duly sworn, deposes and says that he will support the Constitution of the United States of America, and of the State of Ohio, and that he will faithfully, honestly and impartially do and perform all the duties required of him by the said County Surveyor of Logan County, Ohio, or the laws of said State of Ohio.

Sworn to before me September 5th 1910. Subscribed in my presence this 16th day of November 1910.  
E.H. Bushong  
Charles M. Richey, County Surveyor of Logan County, Ohio.

To F.W. McKinnon:

By the authority vested in me by the Statutes of Ohio, I hereby, as County Surveyor of Logan County, Ohio, appoint you, F.W. McKinnon, my Deputy, to do and perform all works, acts, and things pertaining to the office, as required of you by me, as such County Surveyor, and the laws of Ohio. Such appointment to begin on the 5th day of September, 1910 and end on the 4th day of September 1911.

Charles M. Richey, County Surveyor of Logan County, Ohio.

State of Ohio, Logan County SS.

F.W. McKinnon, being first duly sworn, deposes and says that he will support the Constitution of the United States of America, and of the State of Ohio, and that he will faithfully, honestly and impartially do and perform all the duties required of him by the said County Surveyor of Logan County, Ohio, or the laws of said State of Ohio.

Sworn to before me September 5th 1910. Subscribed in my presence this 16th day of November 1910.  
F.W. McKinnon  
Charles M. Richey County Surveyor of Logan County, Ohio.

# LOGAN AND UNION COUNTY LINE SURVEY

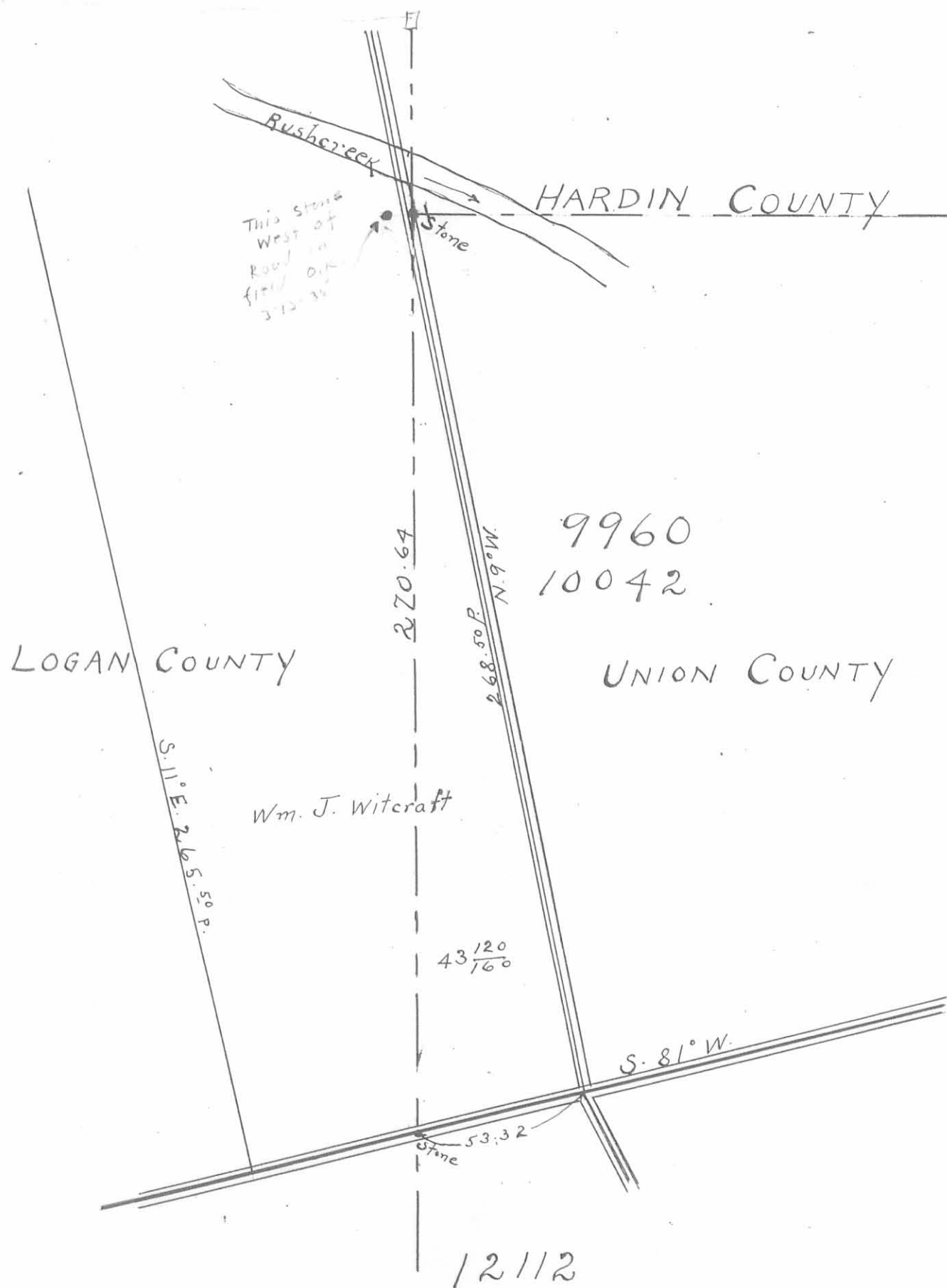
(Pages 30 to 46 inclusive)

Surveyed by F. J. Sager in November 1876.

(Copied from Union County Surveyor's Record in August 1911.)

Charles M. Riehey  
Surveyor of Logan County.

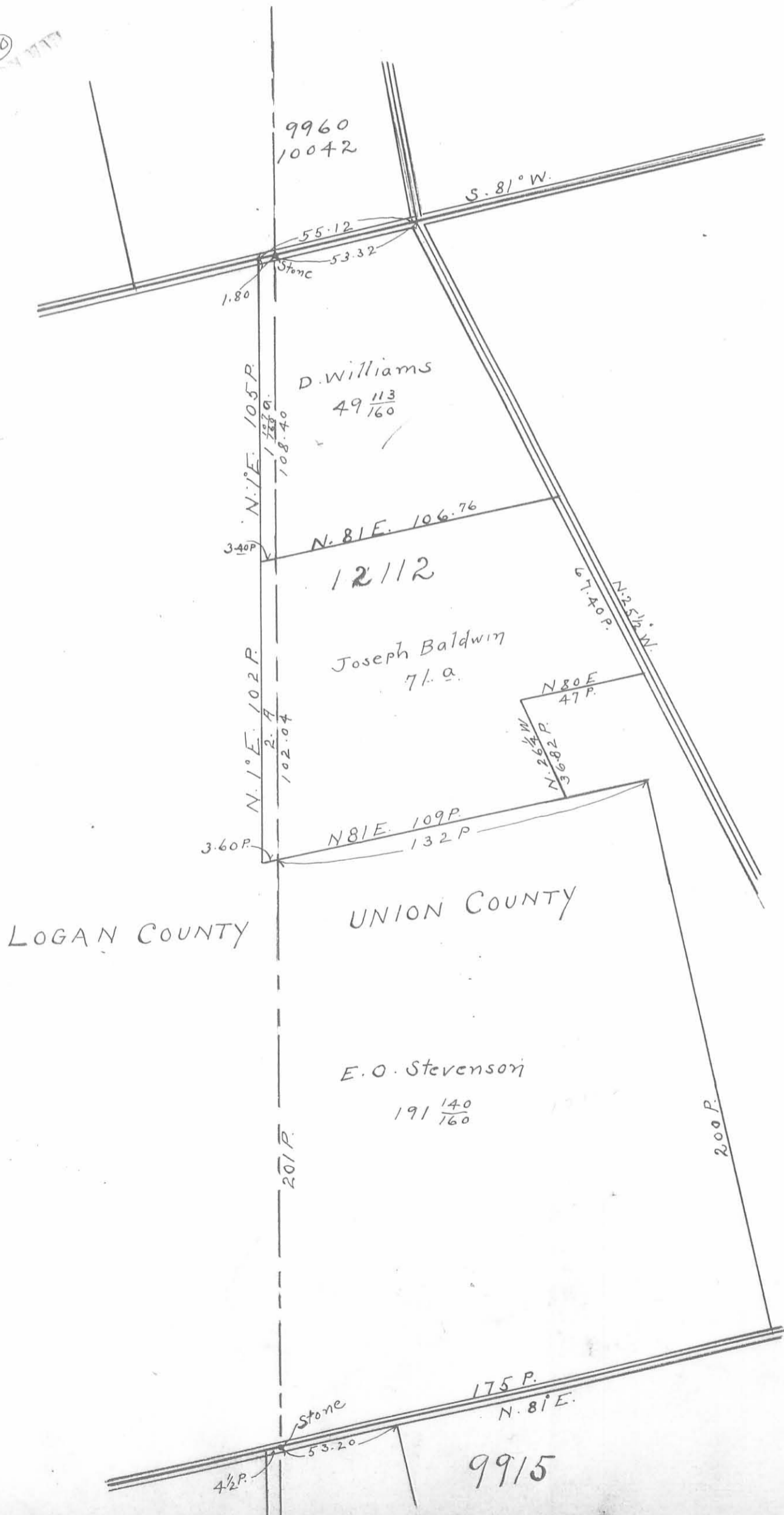
(179)  
INDEXED ON MAP



COUNTY LINE SURVEY

1876 By F.J. Sager.

(180)



165  
180  
-----  
1320  
165  
-----  
277

105  
4.5  
82.5  
-----  
86.0  
79.25

COUNTY LINE SURVEY

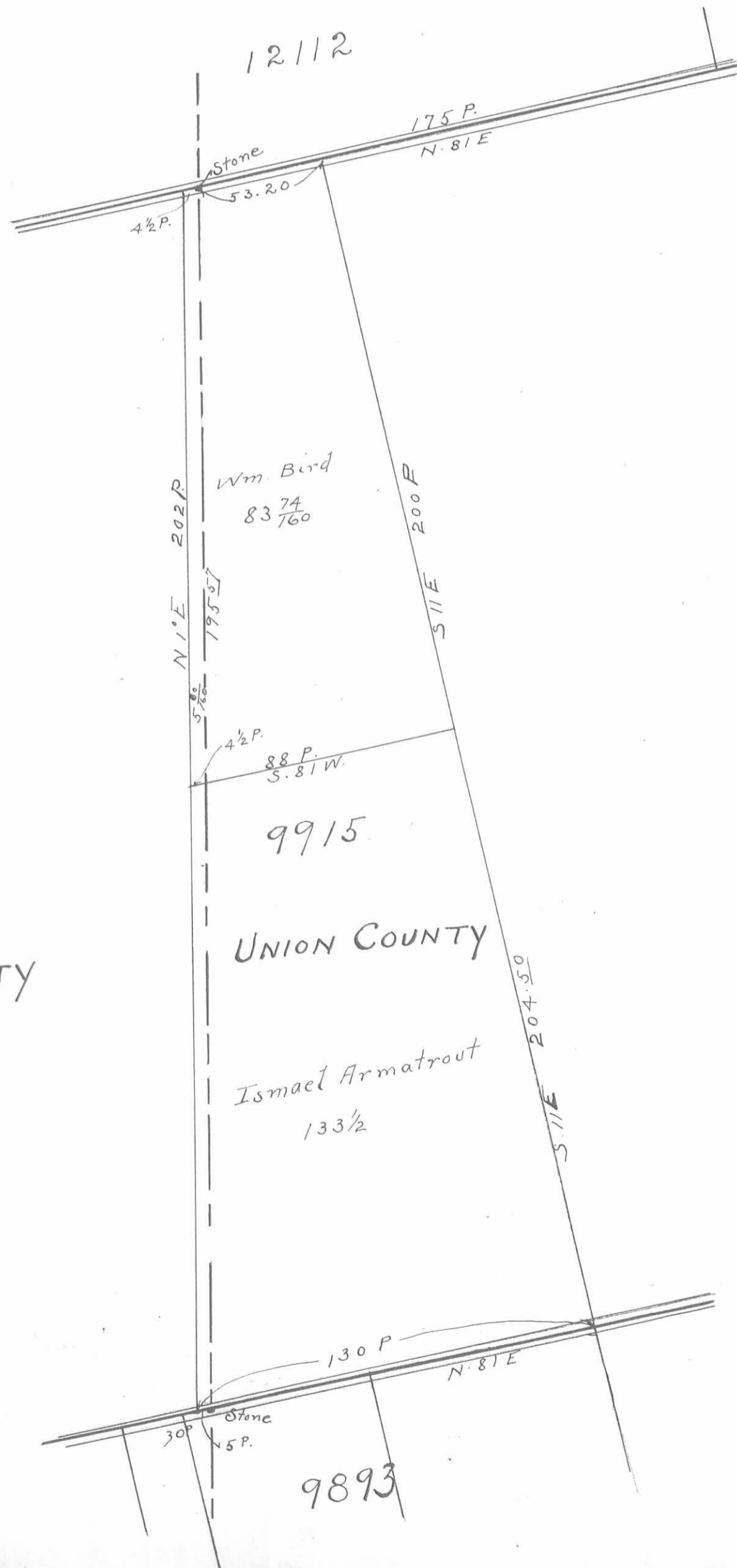
1876

By F.J. Sager.

187  
INSTRUMENT BY MAP

LOGAN COUNTY

UNION COUNTY



12112

Stone

175 P.  
N. 81° E

4 1/2 P.

53.20

Wm. Bird  
83 74/760

200 P.

N 1° E 202 P.

195.57

4 1/2 P.

88 P.  
S. 81° W.

9915

Ismael Armatrout  
133 1/2

204.50 P.

S 11° E

130 P.

N. 81° E

Stone

30 P.

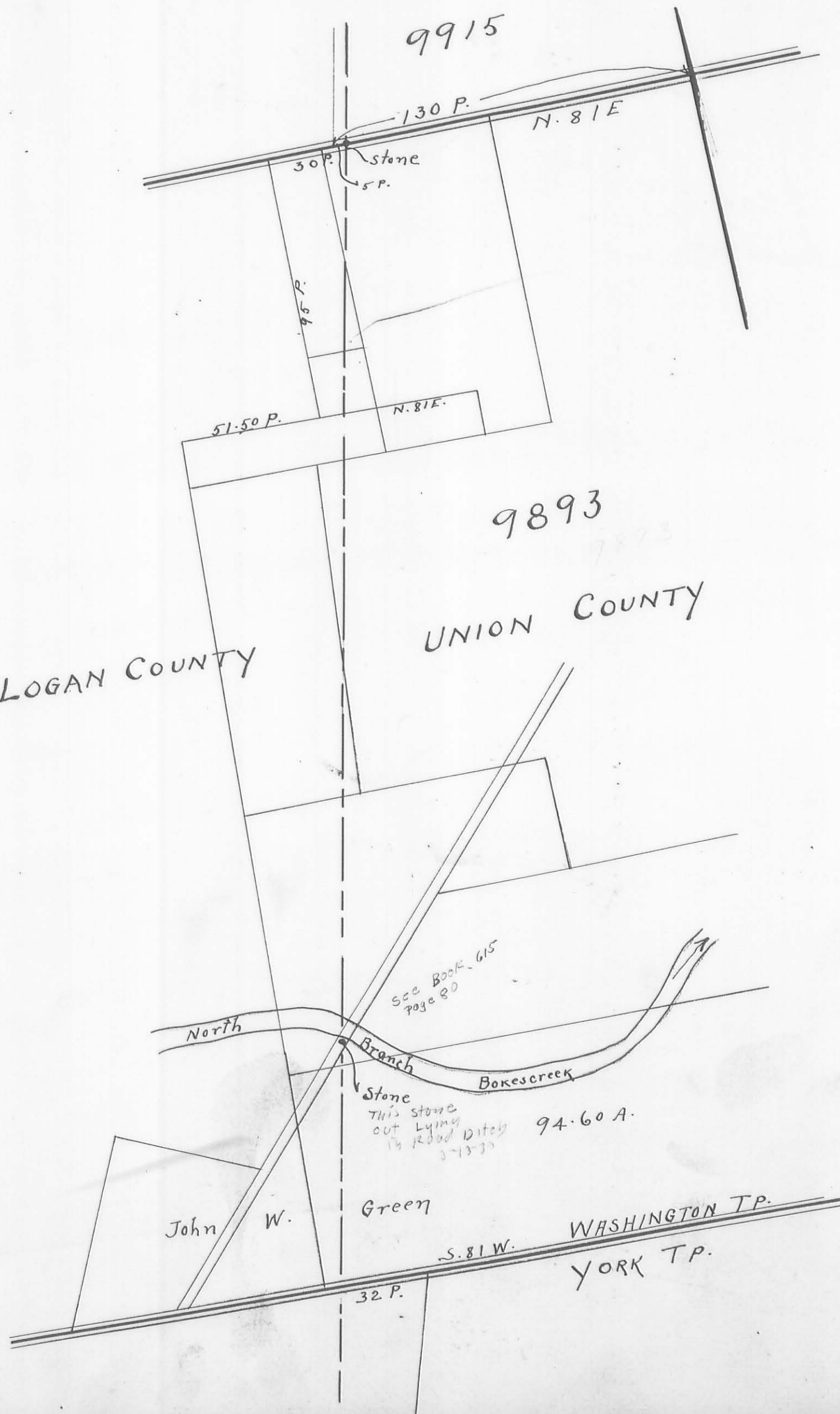
9893



COUNTY LINE SURVEY

1876 By F.J. Sager.

(192)  
INDEXED ON MAP



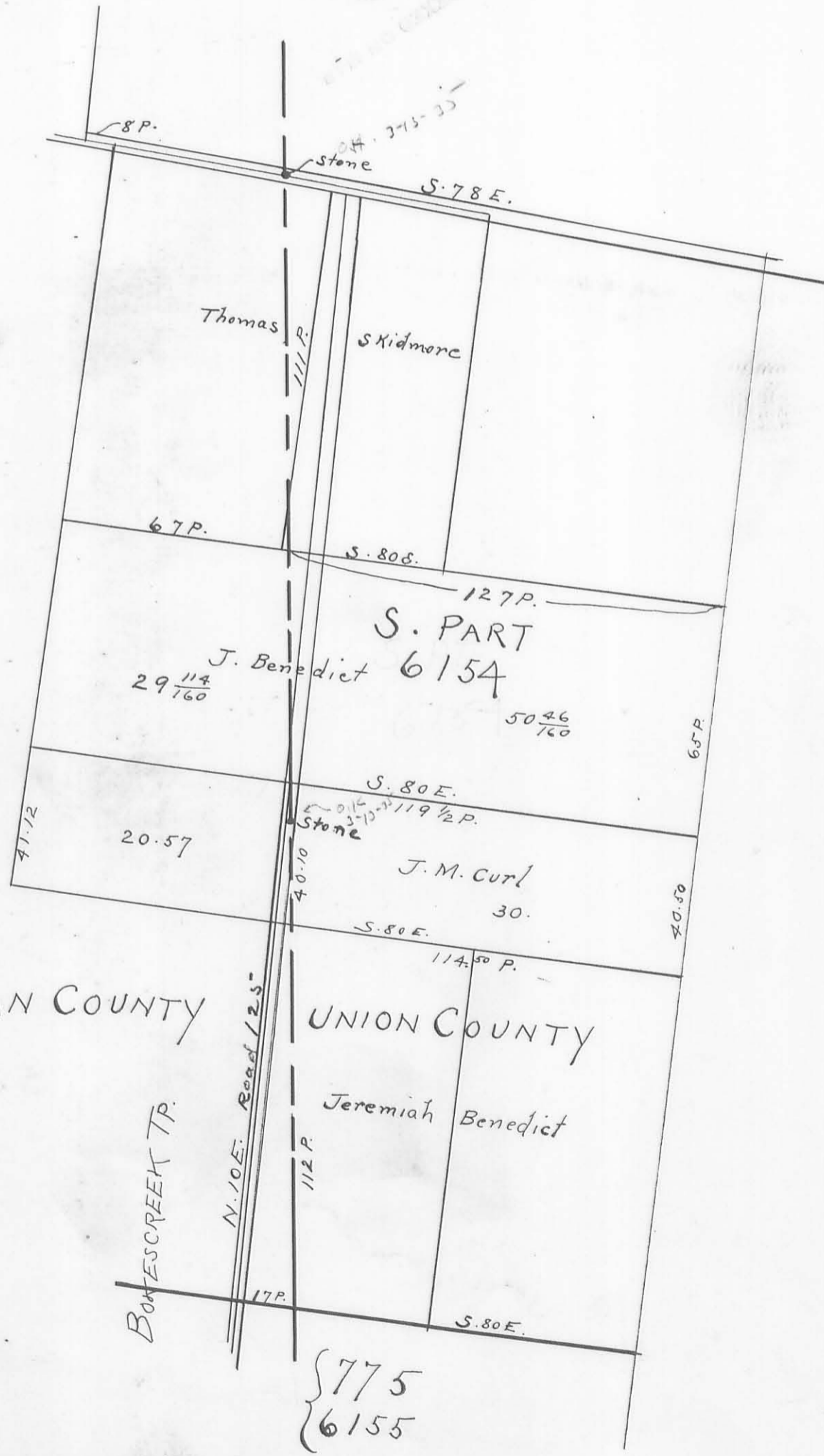
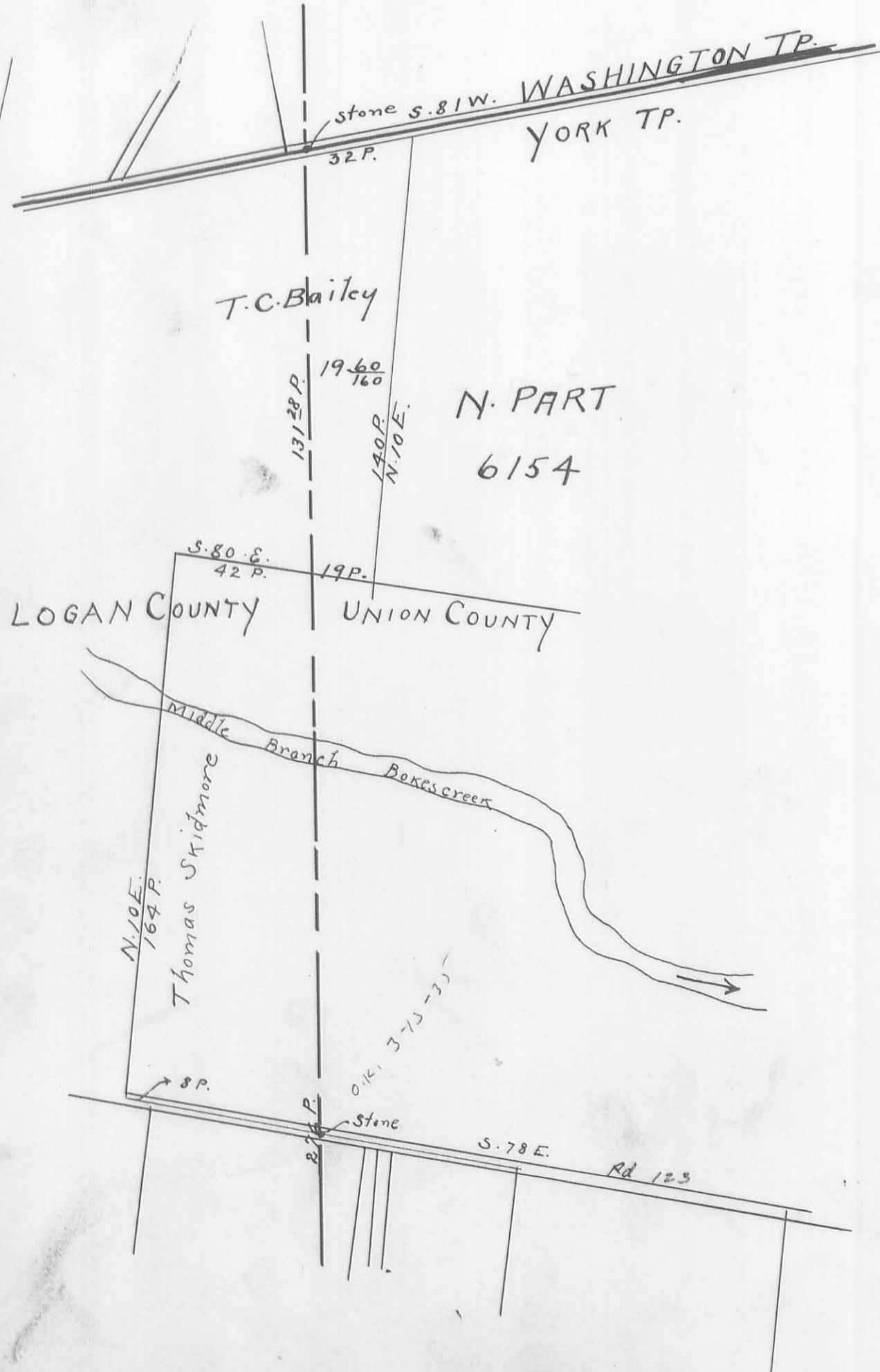
COUNTY LINE SURVEY

1876. By F.J. Sager

183

9893

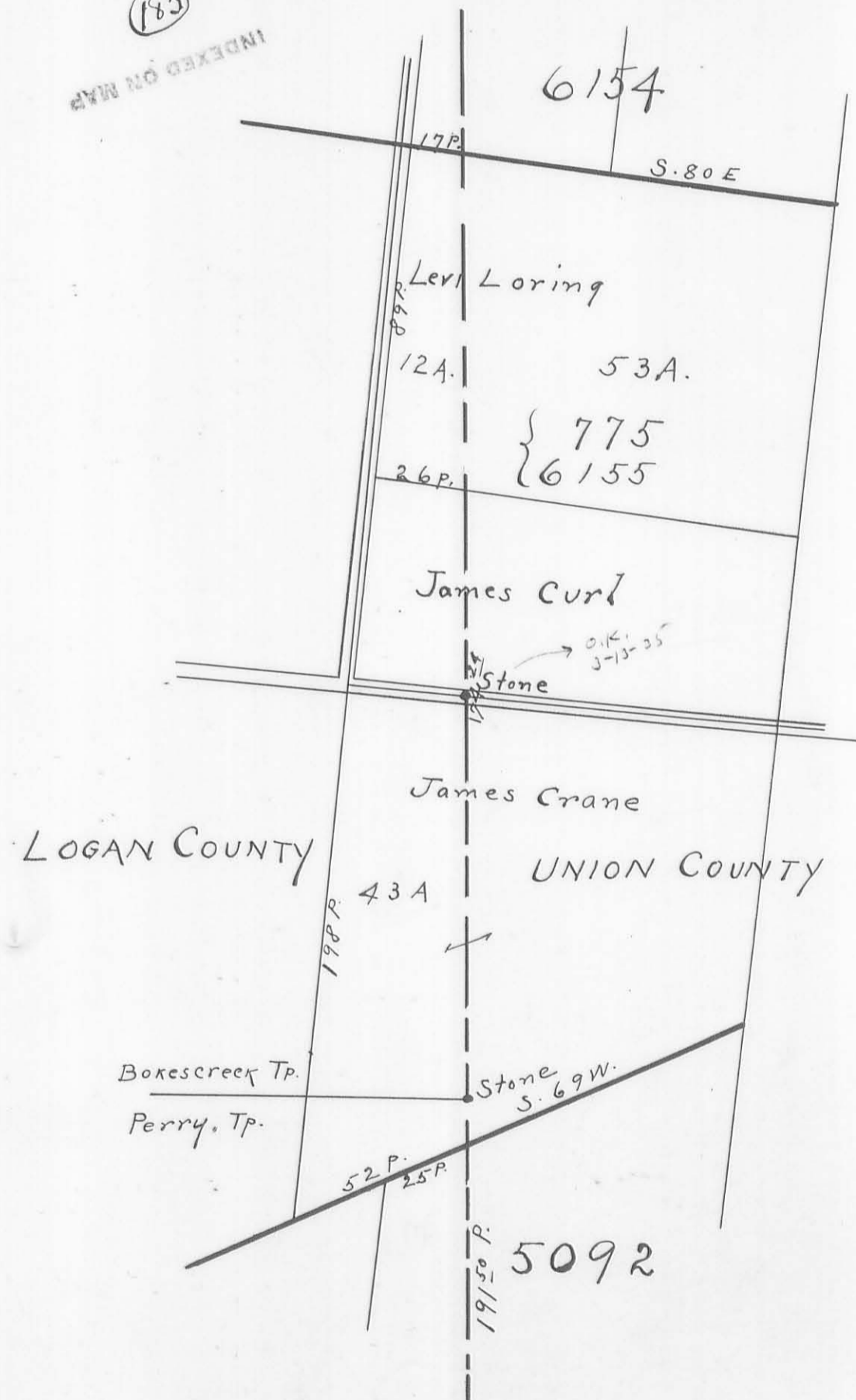
184



COUNTY LINE SURVEY

1876 By F. J. Sager

(185)  
INDEXED ON MAP

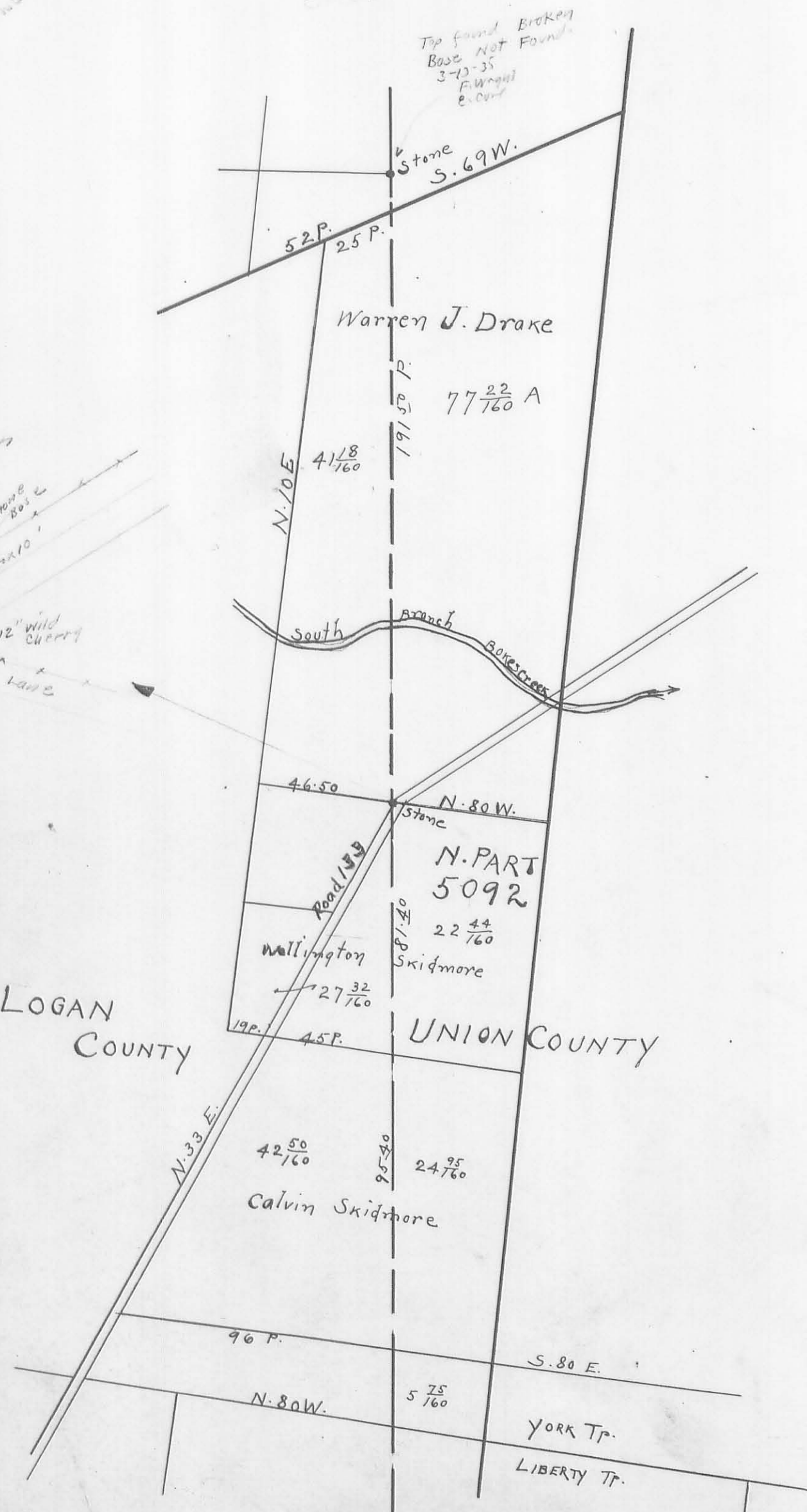




COUNTY LINE SURVEY

1876 By F. J. Sager

(186)  
INDEXED ON MAP



(187)  
INDEXED ON MAP



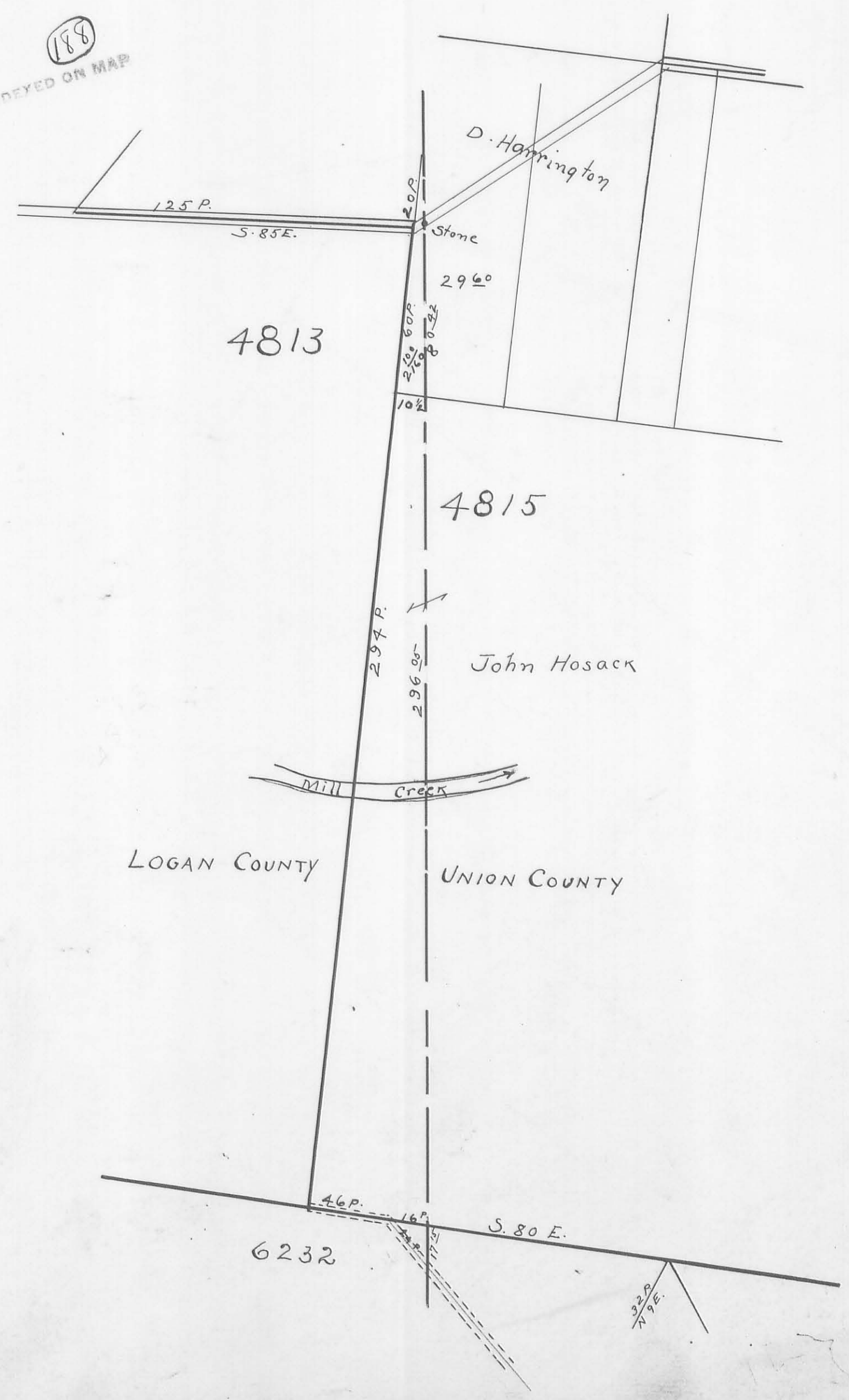
4813



COUNTY LINE SURVEY

1876 By F.J. Sager

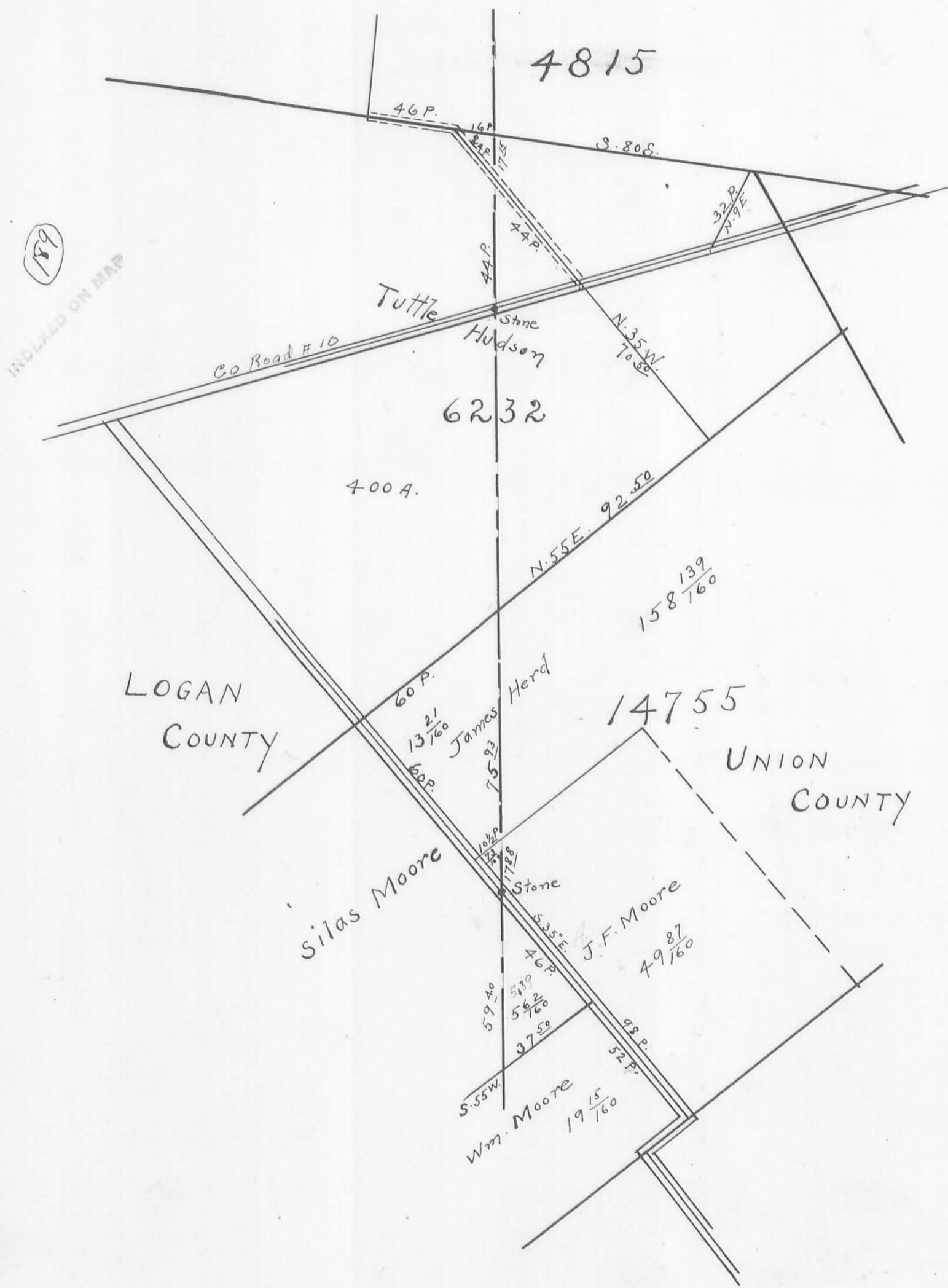
INDEXED ON MAP



4118  
 77 22  
 179 40  
 2 15

COUNTY LINE SURVEY

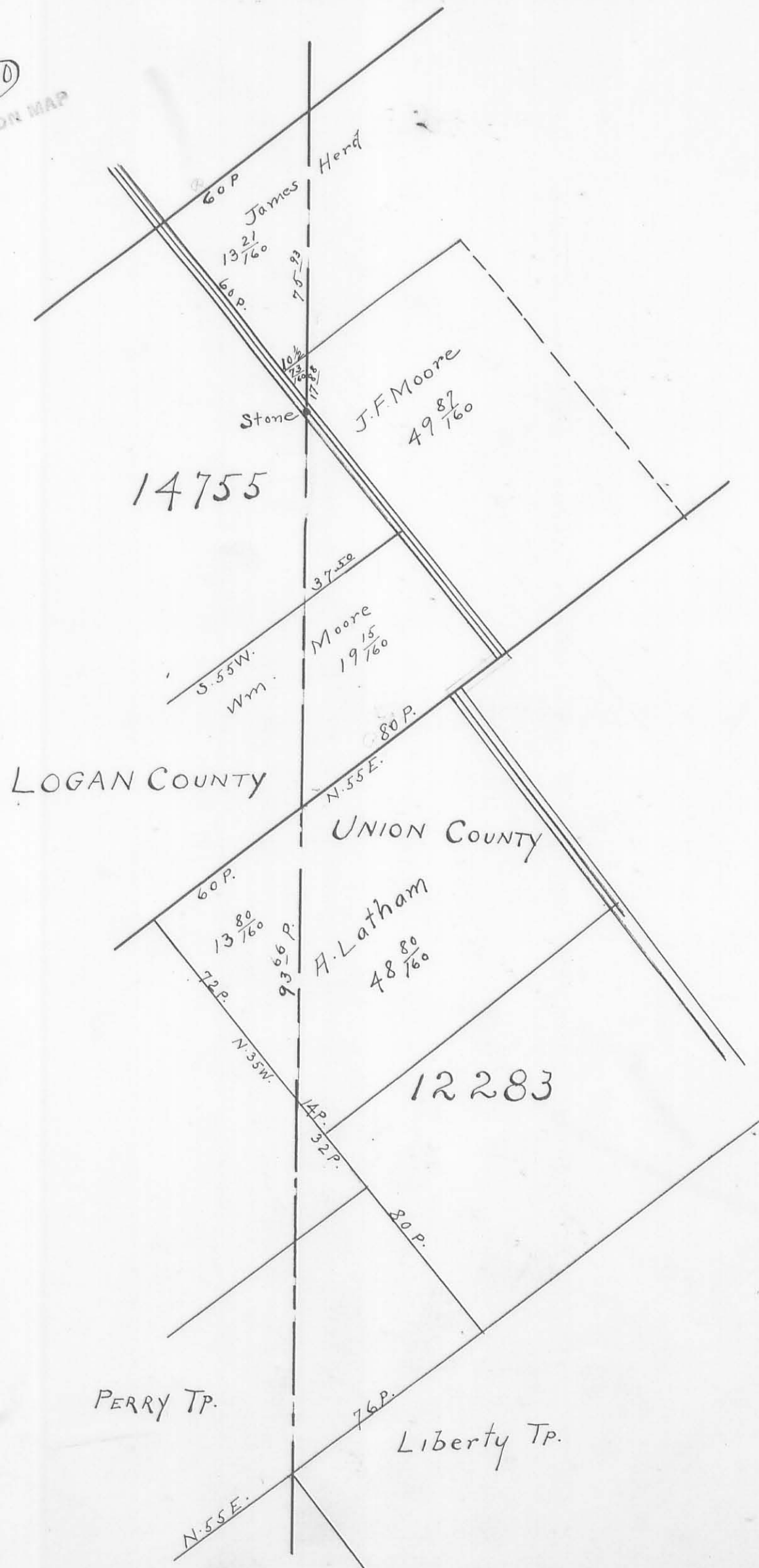
1876 By F.J. Sager



COUNTY LINE SURVEY

1876 By F.J. Sager

(190)  
INDEXED ON MAP





COUNTY LINE SURVEY

1876

By F. J. Sager.



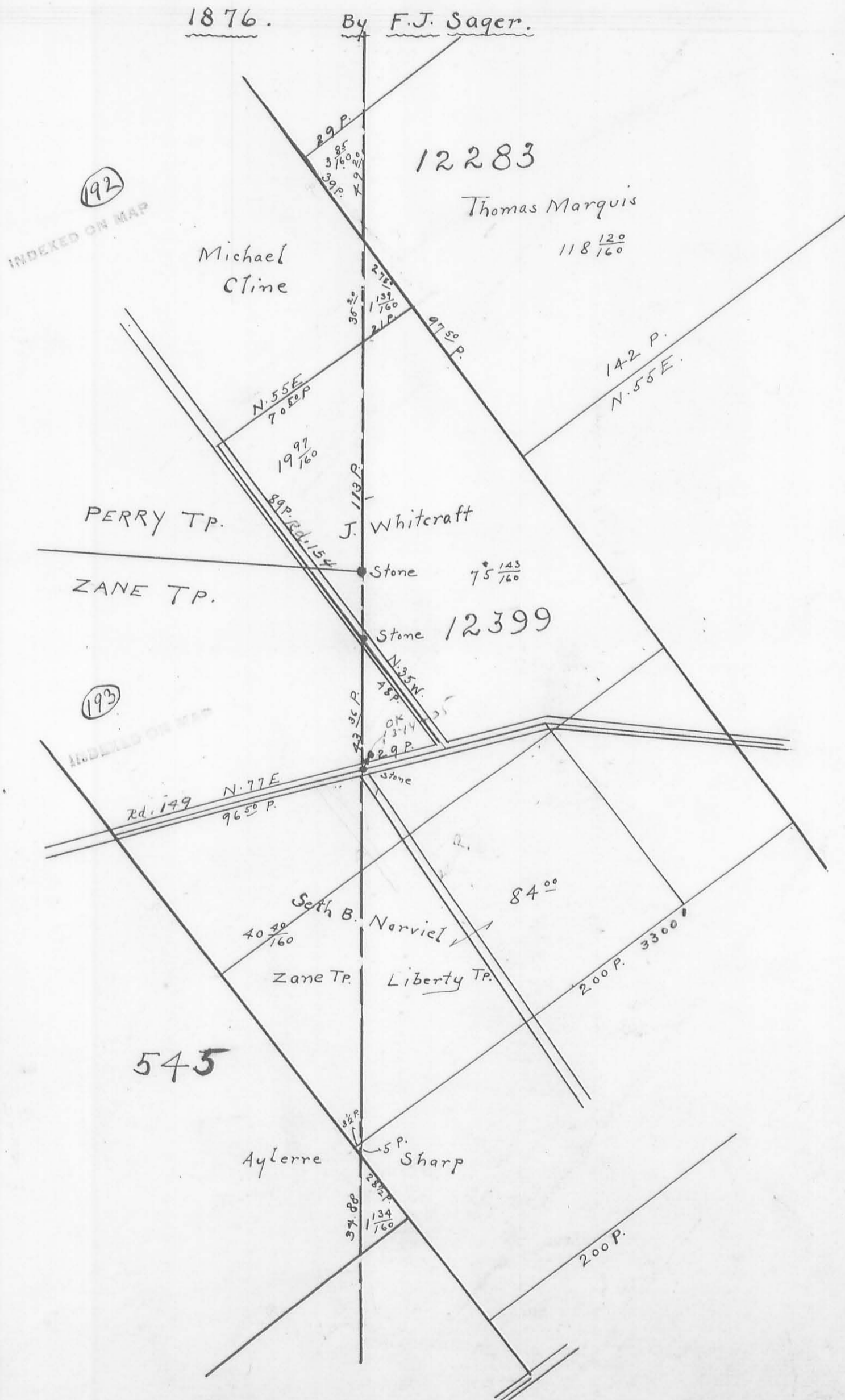
(191)  
INDEXED ON MAP

1876  
F. J. Sager

120

COUNTY LINE SURVEY

1876. By F.J. Sager.



43.86  
1.25  
45.11  
2.10  
47.21  
71.21

97.50  
34  
4134.50  
344

4177.50  
8  
17

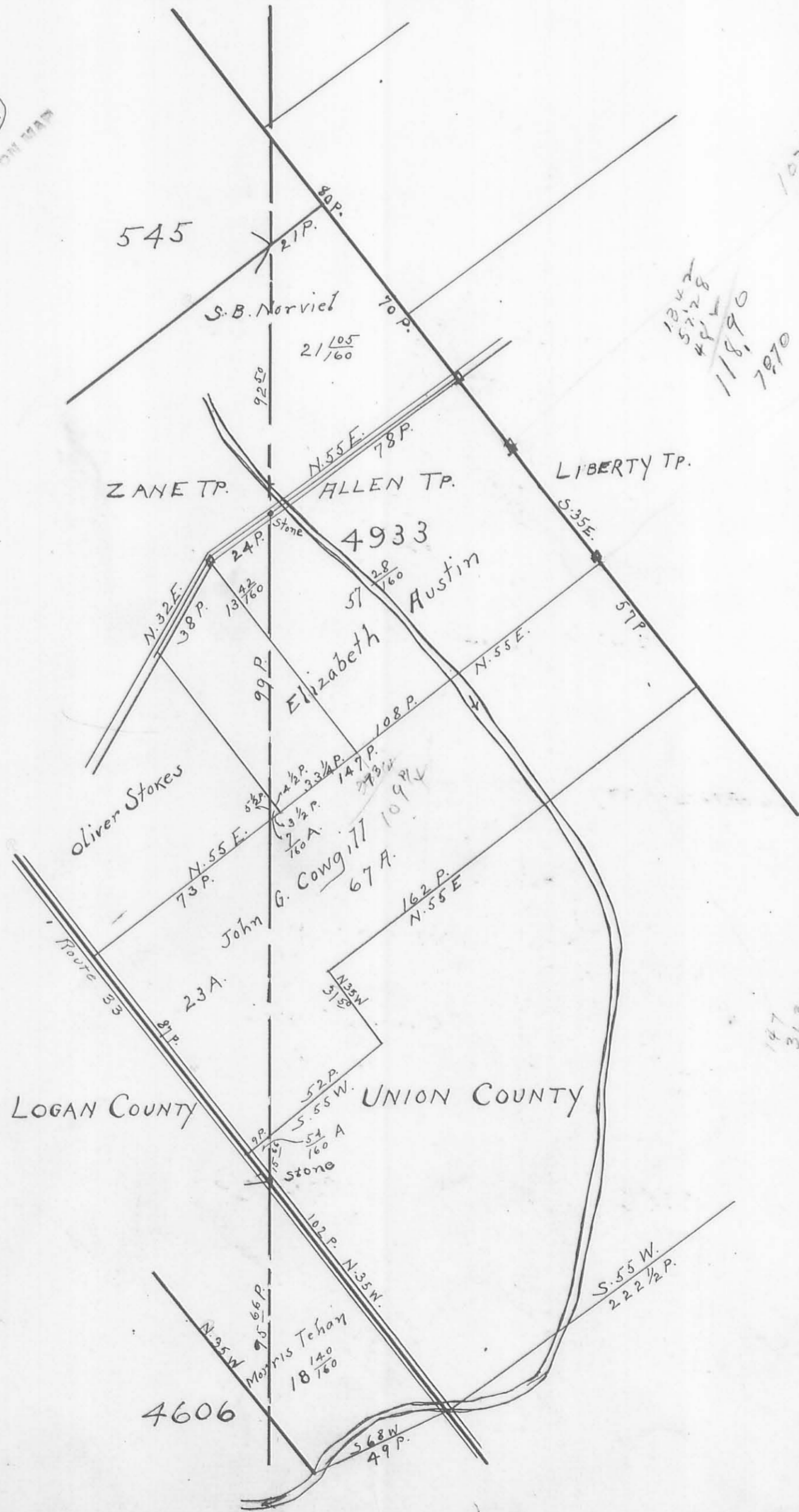


COUNTY LINE SURVEY

4933

1876 By F.J. Sager

194  
INDEXED ON MAP



1242  
5220  
421  
118.90  
7970

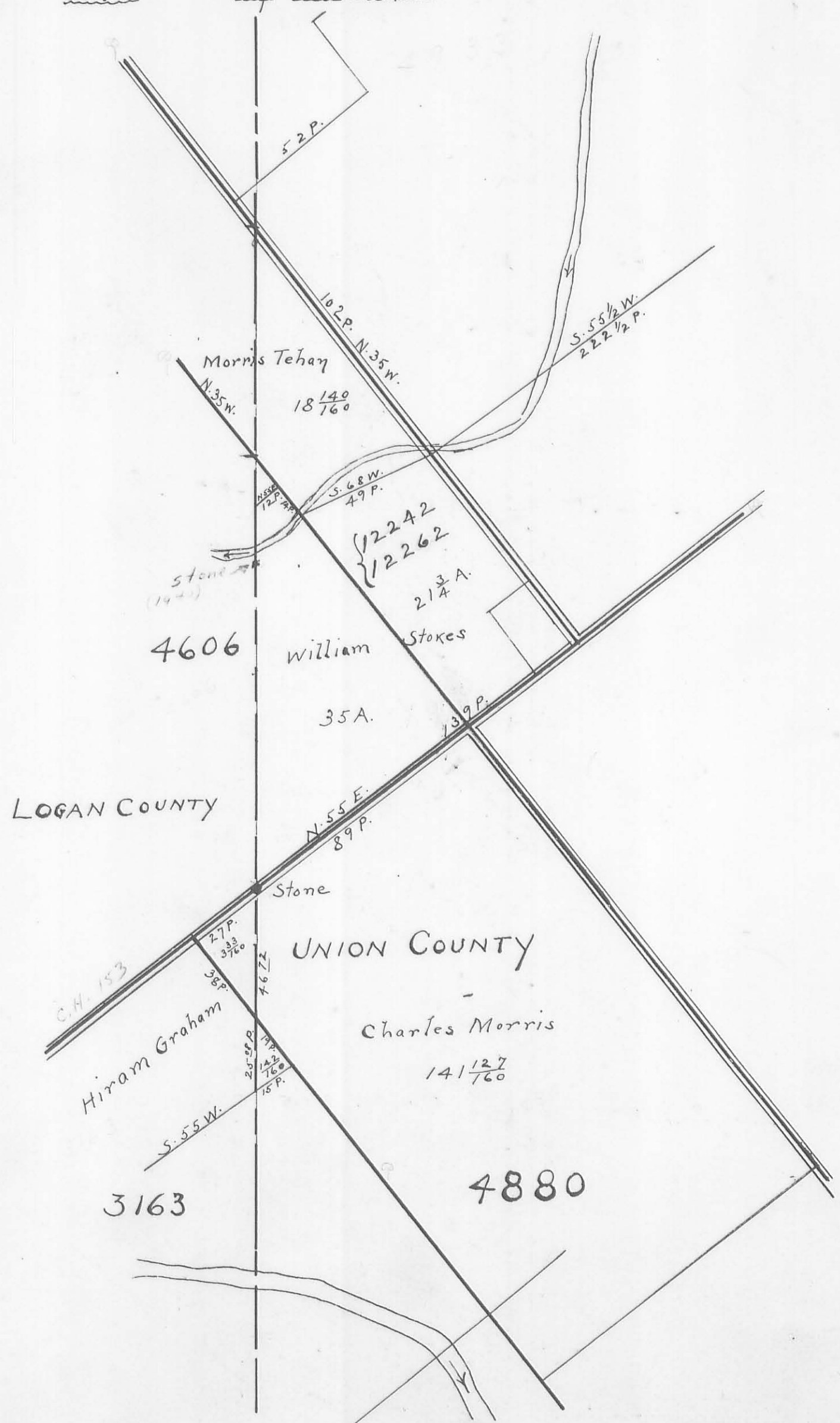
147  
362  
112  
143



COUNTY LINE SURVEY

1876 By F.J. Sager

(195)  
INDEXED ON MAP



LOGAN COUNTY

UNION COUNTY

Morris Tehan  
N. 35 W.  
18 1/4 7/60

William Stokes  
21 3/4 A.

35 A.

Charles Morris  
141 12/7 7/60

Hiram Graham  
S. 55 W.

3163

4880

4606

N. 55 E.  
89 P.

Stone

46.72

25.5 P.

14.2 7/60

10 P.

38 P.

27 P.

33 2/3 7/60

135 P.

S. 68 W.  
49 P.

10.2 P. N. 35 W.

5.2 P.

S. 55 1/2 W.  
22 1/2 P.

Stone (1921)

12242

12262

32 lines

100 miles

18 1/4

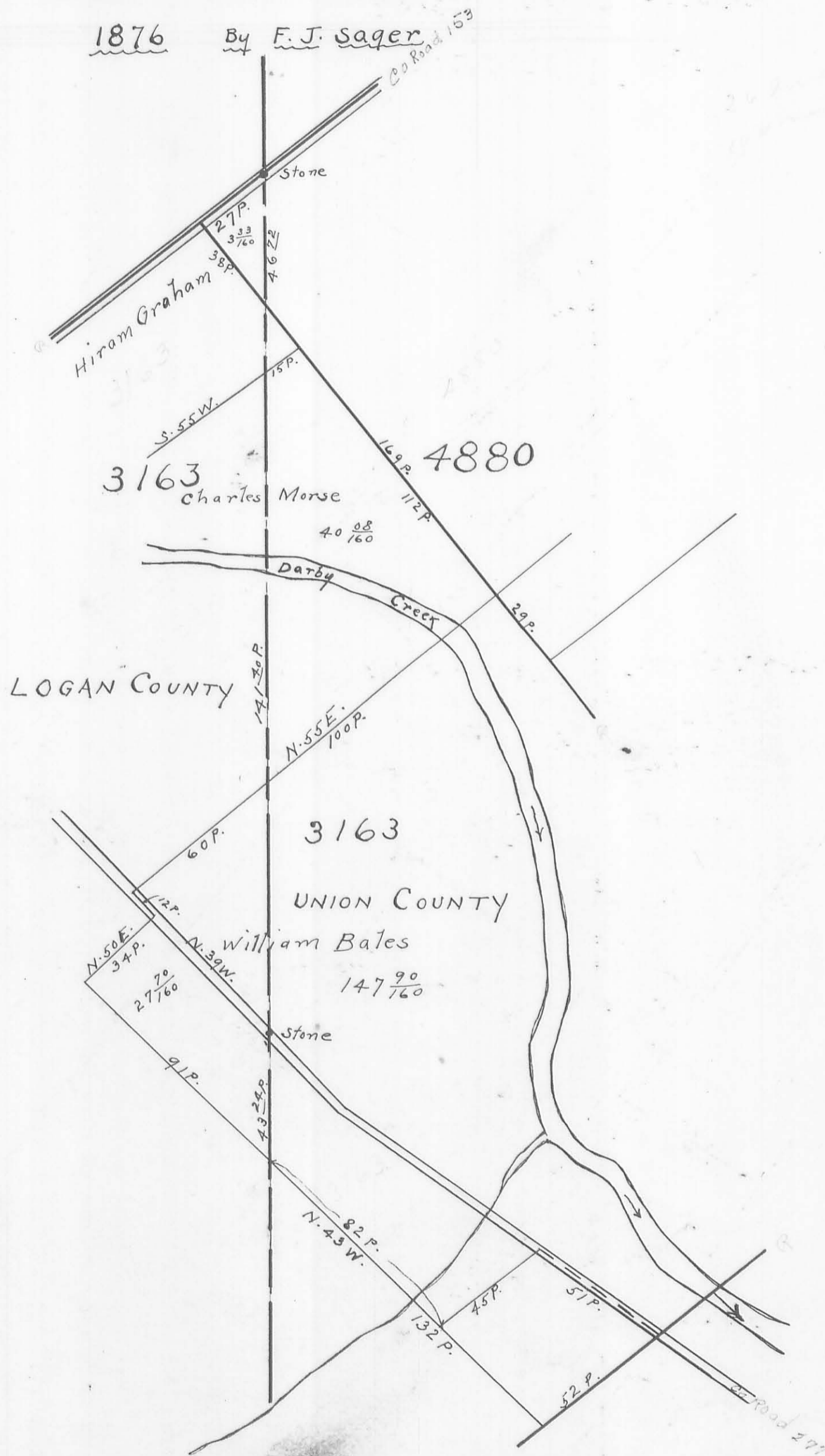
27 7/30

22 1/2

COUNTY LINE SURVEY

1876 By F. J. Sager

196  
INDEXED ON MAP

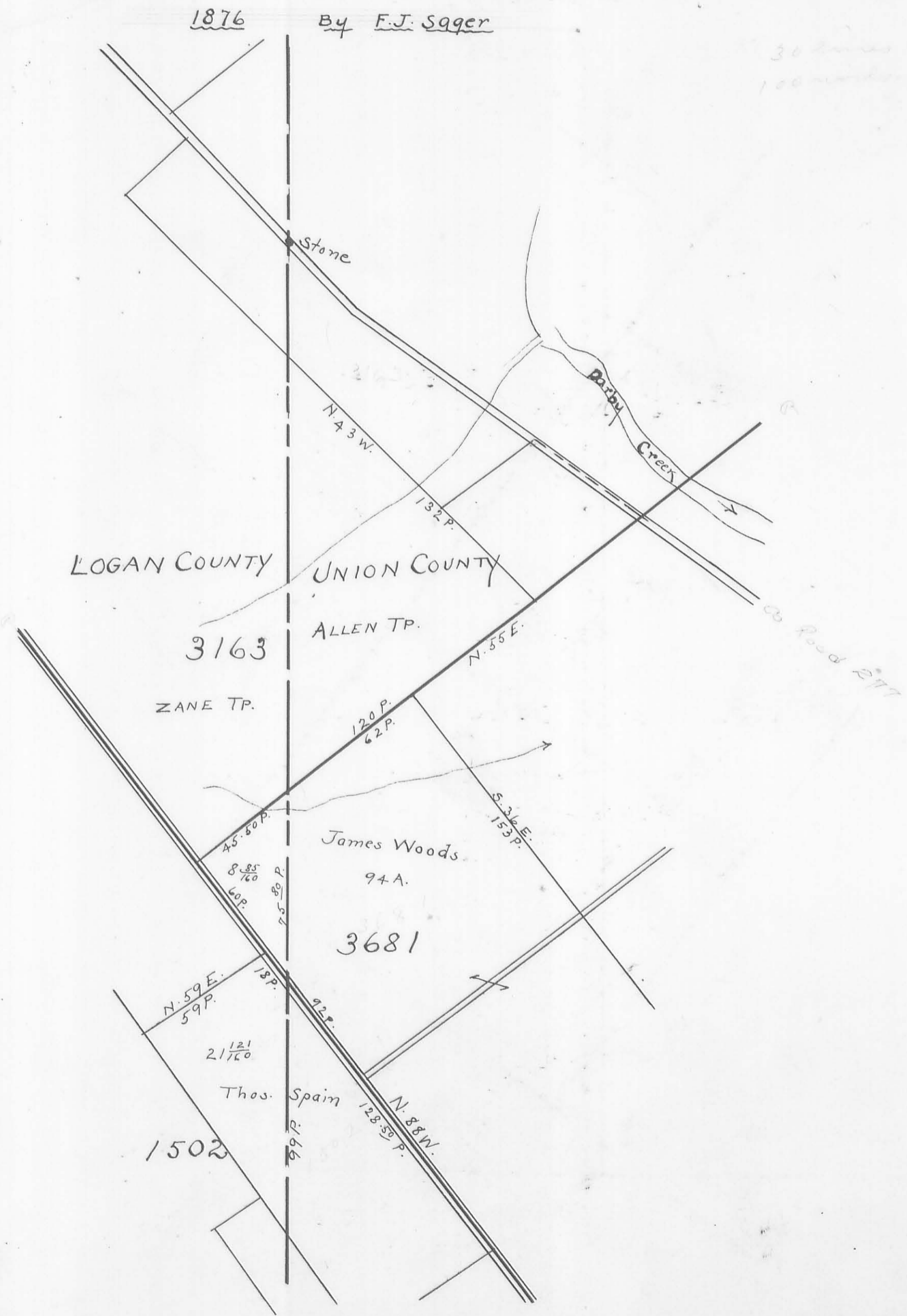


COUNTY LINE SURVEY

1876 By F.J. Sager

197  
INDEXED BY 1977

30 lines  
100 rods



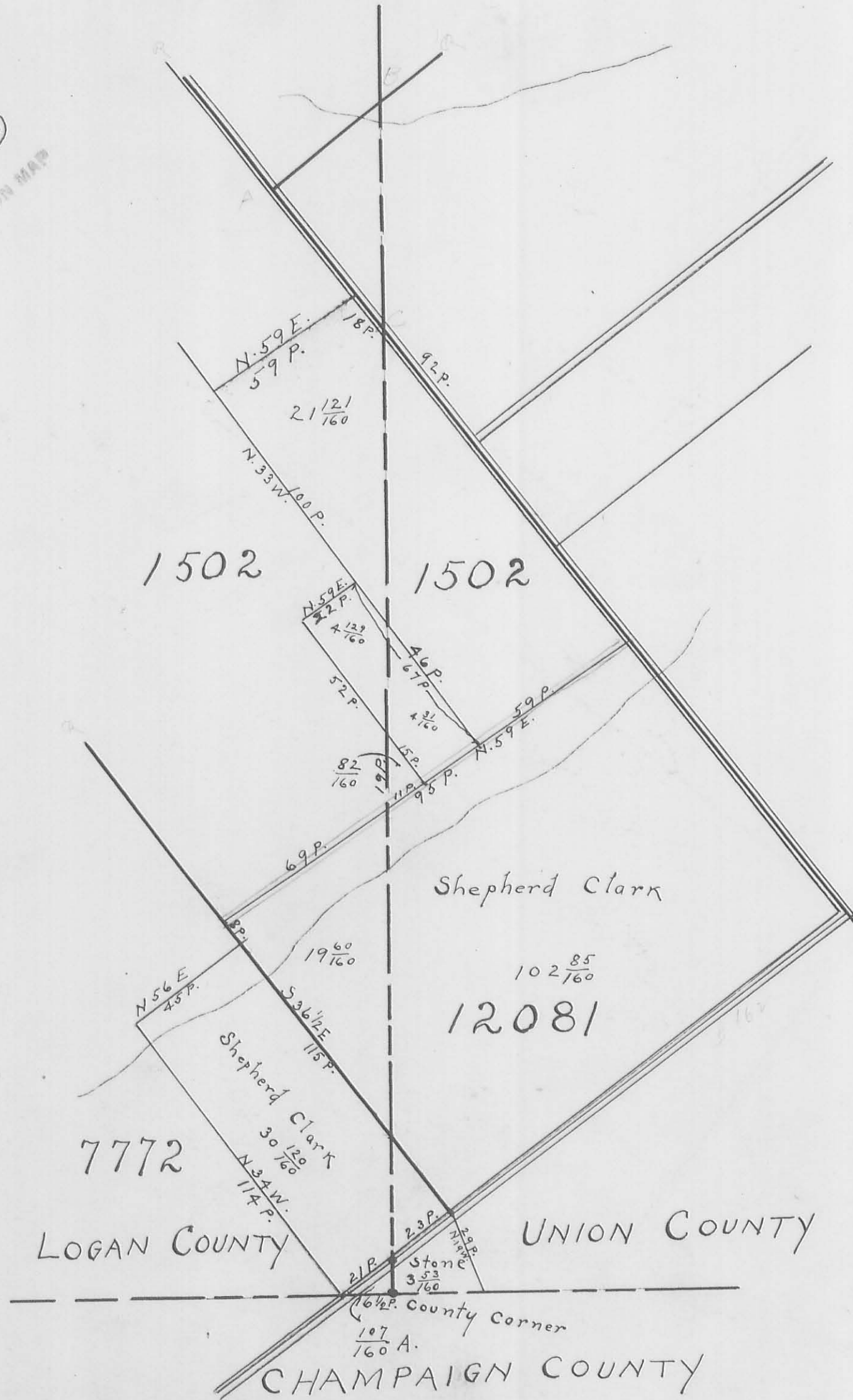


COUNTY LINE SURVEY

1876 By F.J. Sager

24 Lines  
100 rods

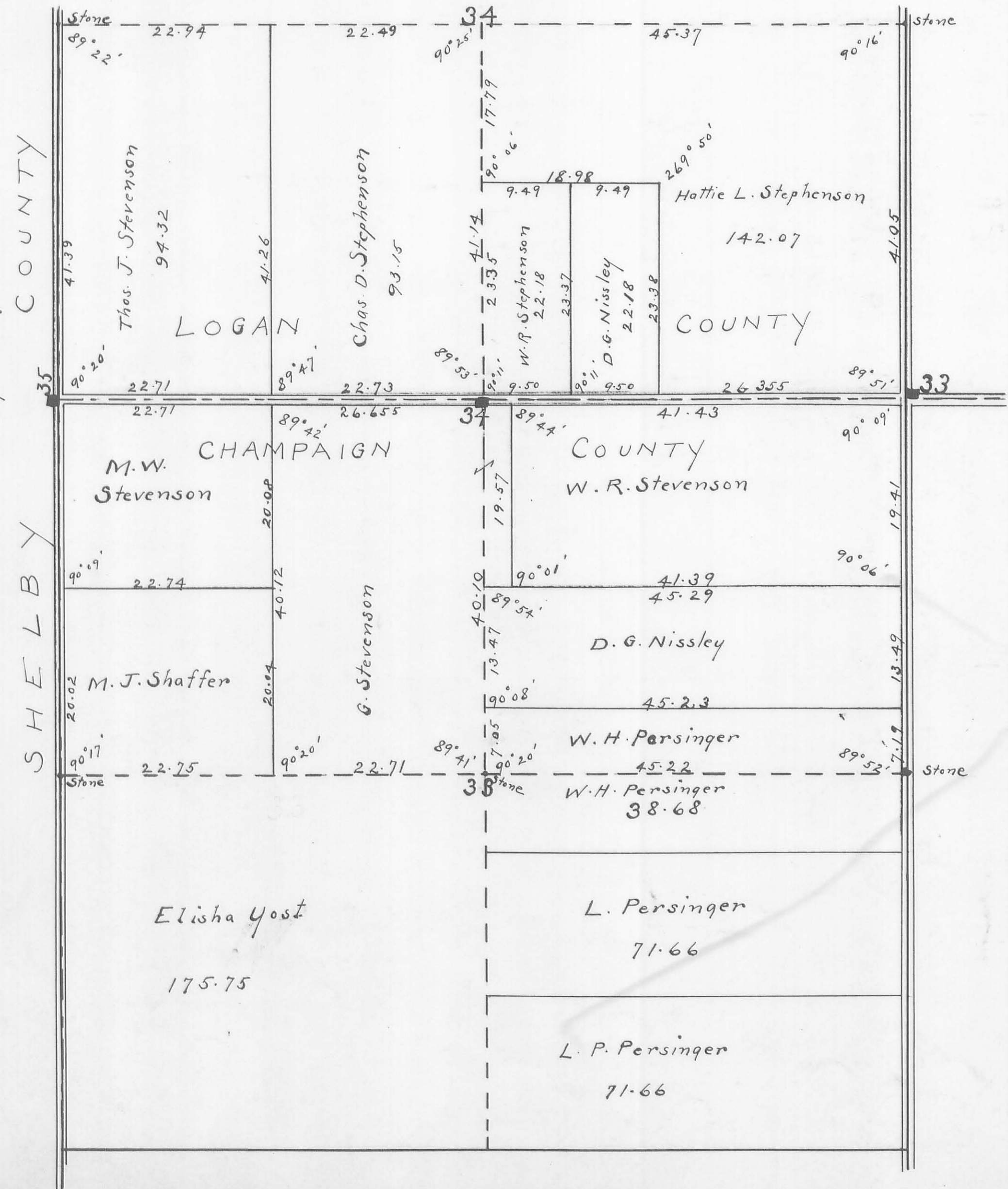
(198)  
INDEXED ON MAP



INDEXED ON MAP  
199

T. 3. R. 13.

Monuments:  
No. 33 ~ Stone ~ 20 feet east and 20 feet north of Section Corner.  
No. 34 ~ Stone ~ On 9th Sec. Line and 20 feet South of Co. Line.  
No. 35 ~ Stone ~ 20 feet west on County Line produced.

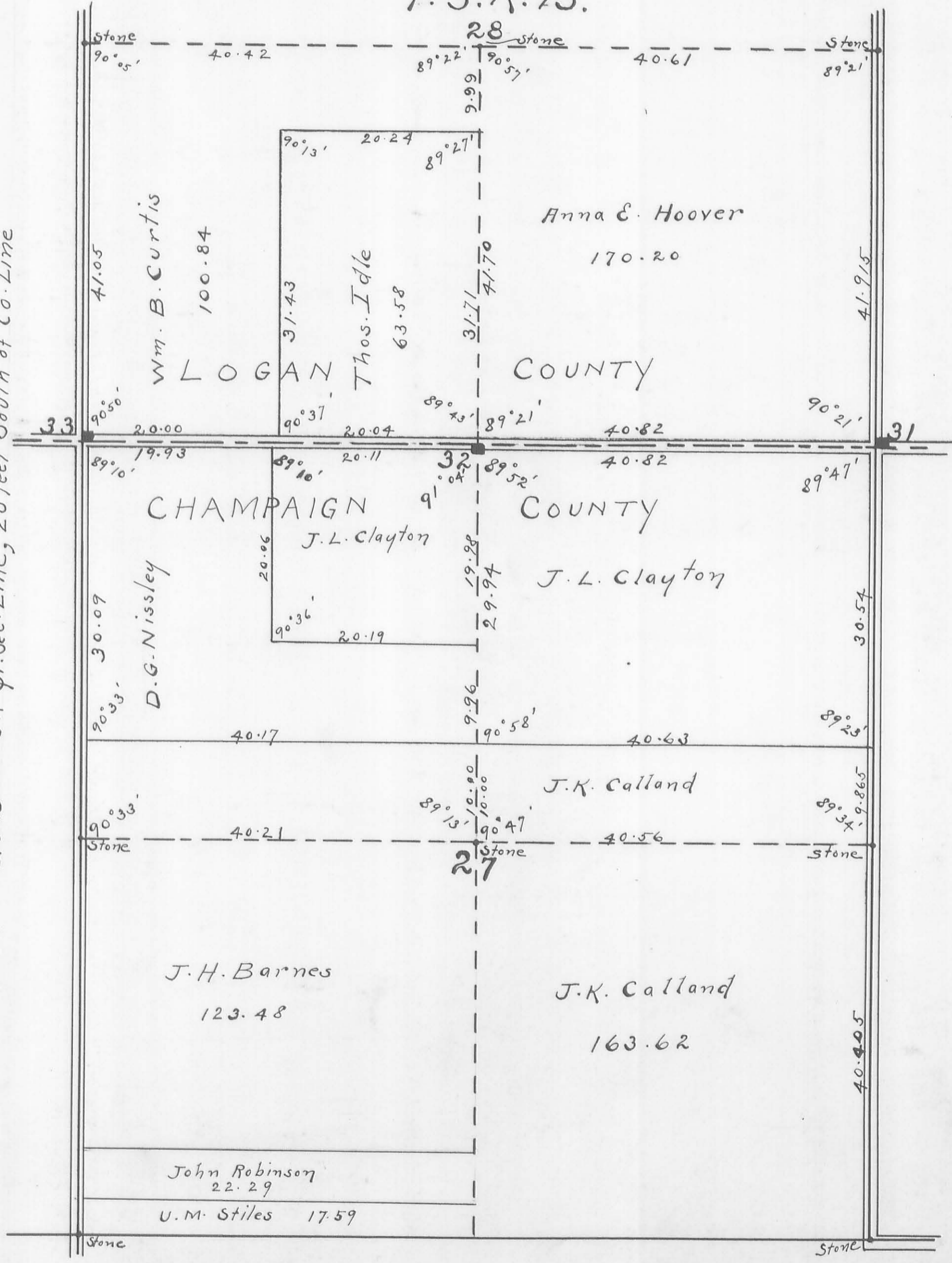




200  
INDEXED ON MAP

T. 3. R. 13.

MONUMENTS:  
No. 31 ~ Stone ~ 20 feet east and 20 feet north of Sec. Corner.  
No. 32 ~ Stone ~ On Qr. Sec. Line, 20 feet South of Co. Line



22 lines  
100 rods  
0 m.



(101)  
INDEXED BY PLAN

MONUMENTS:  
 No. 29 ~~~~~ Stone ~~~~~ On line 20 feet east of corner.  
 No. 30 ~~~~~ Stone ~~~~~ On pr. Sec. Line 20 feet South of County Line.

T.3. R. 13

