

2
Matvey Survey

LINE A

Commenced in road at
N.W. 1/4 H. Warren East
Wit: 8" Daffodil tree N 59 3/4 W. 45 -
12" Oak S. 53 3/4 E 90 ←

Chained N. 1/4 1867 with road

27.80 ch - 11.01 = 16.79 dist.
in road

LINE B.

Chained E.

1 + 58 W. fence of rd of way to o.s.
2 + 58 S. " " " " " " " "
11.93 ch to S.E. corner within
in fence line

Offset 8' R.

W. Random S. 89 3/4 E.

Came out offset S. of E. L.
Total Northing by amt
32.38 to stake of Jacob
Wagner
O.K. case S 89 3/4 E

6867

INDEXED ON MAP

LINE C

along W. line Wagner - a tract

5.00 South

5.37 to O River

Set stake 6 west of old post

Wit: 4" Hackberry 6-3" N.W.
18" Cottonwood 33 1/2 lbs N. 30 E.

LINE D

with river

S. 75° W. 1.55 ch.

LINE E

with river

S. 63 1/2° W.

S. 62 1/4° W.

1.8 | ch

LINE F

with \odot RIVER
S. $57\frac{1}{2}$ W.
1.70 ch.

LINE G

with \odot river
S. 28⁺ W.
2.36 ch.

LINE H

with \odot river
S. $12\frac{1}{2}$ W
2.41 ch.

LINE I

S. $5\frac{1}{2}$ W.
2.16 to north line
Warren tract

N. Line Warren tract = 32.41
S. Line this tract = 32.41 +
.60 ch = 33.01 ch from \odot
river to \odot road.

stone on bank 40 feet from
 \odot river on line
With: 12" Walnut S. $7\frac{3}{4}$ W.
40 lbs.

S. Line tract N. $89\frac{1}{2}$ W
33.01 from Warren
description.

Average:	
Warren tract	32.96
- $2\frac{1}{2} \times 40$ for 1/2 river	6.2
	<hr/>
	33.58
Area of north tract	42.47
- 50.0 C.	2.37
East Wagner	2.94
Schullhouse	.91
S. L. Horn	6.15
	<hr/>
Total	88.42

seed calls for 86.83

Boyles Survey
of
Entire Randle Land
Survey 6487, 2220
4492

1533

Broyles Survey

Commenced at S.E. cor. of
Emily Randal land also
corner Jones.

Stone of 40" W. Only 2' S.
Chained N. N. 15⁺ W.
11.49 ch. to stone
Mary Randal, Henry Tolbert
Emily Randal and Jones.
18" Ch. 18" East

LINE B:

Offset 6'-8" S. 3/4 W.
Random 57³/₄ W.
Came out 15'-3" S of stone
10.04 ch.

O.K. Cre. S 74¹/₂ W

LINE C

Ch. N. Offset 6' W.
Random N. 15³/₄ W

Came out 37' W. of fence

19.78 ch

O.K. Cre. N 14¹/₂ W

Morse Twp. 2/28, 1912

LINE D

W. with O. fence

4.46 ch.
S. 63³/₄ W

LINE E

with E. line school lot

S. 11 E
2.53

LINE F

S. 63⁺ W
1.42

1533

LINE G.

Ch. South with fence

5.148

Passed north S. line at 8.05

Passed stone in fence

line at 15.05

27.82 - line Hart's line
corner post

LINE H

along south line

N. 73 1/4 E

16.13

Ch. W. along north S. line

corner S. 31.1 - 2.76

Ch. S. in line of fence closed on

in Black corner

S. 14 1/2 E. Block corner N.

Ang 56°

5.76 1/2 E.

3.29 ch. to line B. at point

10.47 ch. from line B. at

Ch. from line C

to stone at 15.05 of

line G

6.00 ch.

Survey corner is 12 1/2 rods
from line C

1533

HUMPHREY

East Liberty
 Original town plot
 Main St 80 feet. 011ays 16 1/2 ft.
 Lots 50x192 1834

Widening Home + E. Liberty pike
 48 feet in width

LINE A Bolt 4 E. of road grade gravel
 and 10'-6" W. of main street
 Found iron bolt at S.W. c of 3.33
 secret tract in east edge of gravel.
 Chained north with State street
 14.54 rds = 239.9 feet.
 Found iron bolt or pin at 239.9 feet
 13' 6" from fence and 5 feet from
 C of gravel and grade.

LINE B Chained N. E. along N. side
 604.4 feet to stone lat N. side part
 one of Ames Johnson's corners.

(Pearl J. Humphreys
 Ch. Cr. Ed. Johnson

SURVEY E. Liberty

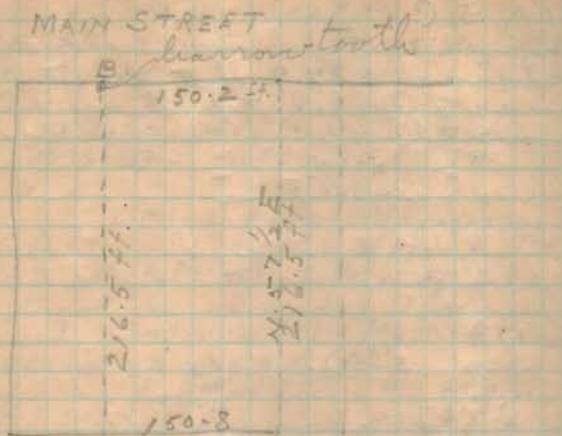
3/19 1912

LINE C Chained south along Ames Johnson's
 west line 239.9 feet to stone
 corner to Rachel Fitzpatrick and
 in west line Ames Johnson

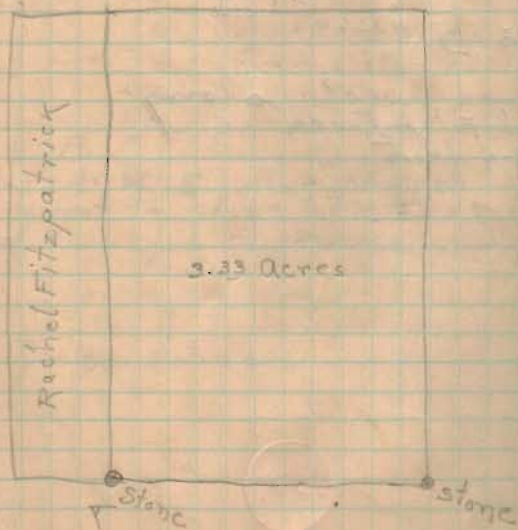


LINE D Chained west along
 Rachel Fitzpatrick
 604.4 feet.

6299



LINE - State St.
D Iron pin X D Iron pin



LINE A 1.26 A. tract
Set pin 50+50+16 1/2 feet S. of
hick fence
measured to line AB 150.8'
Set 2 1/2" iron gate hinge at corner.
This bar is 24 feet E. of Humphreys
old fence (9)

LINE B
Chained W. in alley
214 1/2 feet = 13 rods.
296 1/2 feet to front in line with
fence to north on other side street
O.K. Dist = 216 1/2 feet.
O.K. Cea = N. 57 1/2 E
measured south front James
Carpenters house to alley
216 1/2 feet for Humphreys corner
Corner in line with N.
side of house and 2.9 feet
West of corner of house
Drove harrow tooth

6299

LINE C:
 along Main St.
 150.62 feet to narrow tooth
 drawn in line
 N. $3\frac{1}{4}$ W.

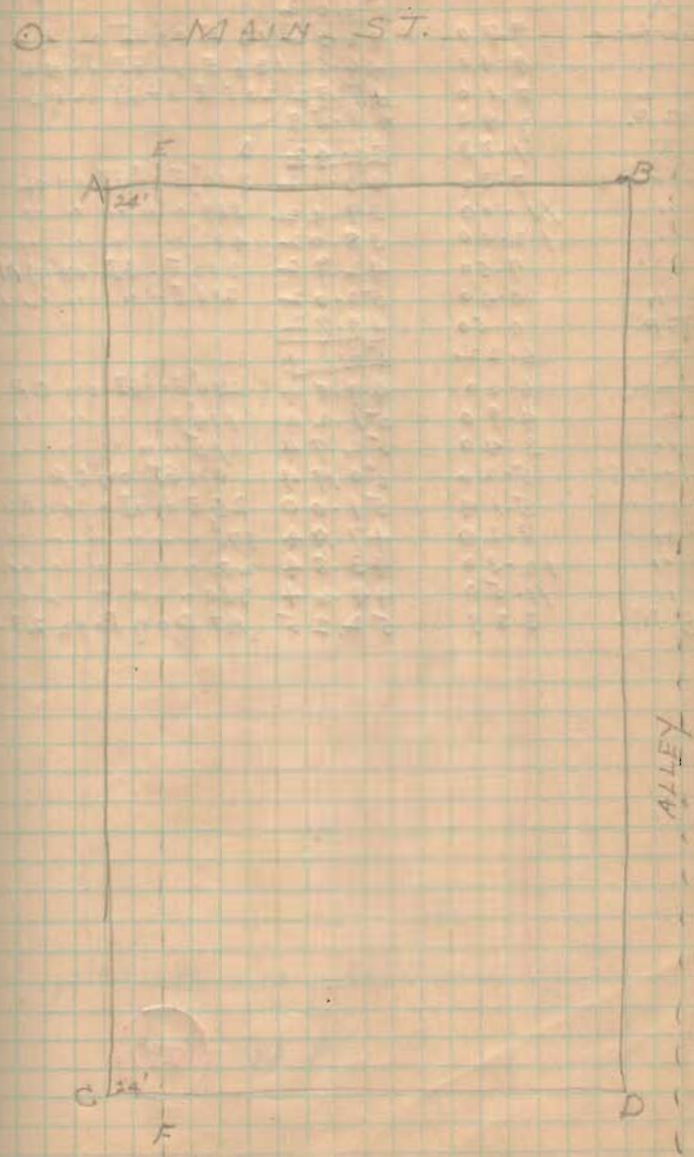
LINE D

216.5 ft.
 along S. side on line A.B.
 Dump bolt 4 feet inside of fence

6299

B.M.		600.0	Top stone foundation
X	3.76	<u>63.16</u>	Dan Lippincott's house S.W. Corner
Backlot	6.70	56.46	
Alley	5.70	57.46	30' East of Main
" "	2.60	60.56	62' East B
" "	3.20	59.96	95' East B
" "	6.30	56.86	155' East B
" "	10.50	52.66	200' East B
B.M.	10.92	52.28	Top iron bar at D.
Backlot	2.20	60.76	Backyard 62' East AB
Front yard	2.50	60.66	On line AB
" "	2.50	60.66	20' W. Line AB
Bot. slope	9.20	55.96	19' W. " "
@ Main	8.00	55.16	57' S. of BD
Bot. slope	9.00	54.16	20' East of Main
Front yard	3.20	59.96	57' S of BD on line AB
T.P.	2.72	<u>60.44</u>	
X	2.16	<u>62.60</u>	
Back yard	3.90	58.70	62' East AB, 57' S of BD
At barn	7.50	55.10	24' W of D
Back yard	9.50	53.10	24' W of CD, 57' S of BD
@ Main	9.40	53.20	On AC
T.P.	9.14	<u>53.46</u>	
X	2.56	<u>56.02</u>	
Surface	4.20	51.82	19' W of AB, 24' N of AC
"	5.00	51.02	20' E of AB on EF
"	6.90	49.12	100' W of CD on EF
"	8.70	47.32	24' W of CD on EF
"	10.70	45.32	At C
B.M.	3.77	52.25	At D

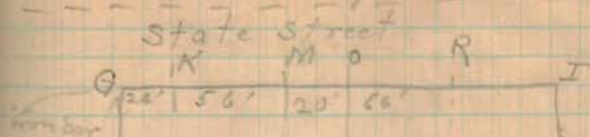
6299



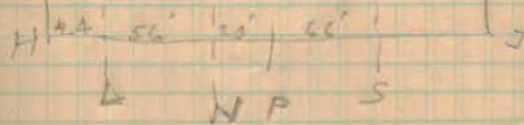
Humphreys Survey

East Liberty, 3/19 1917 31

T		56.02	
Surface	9.70	46.32	16' E of GI on KL
"	9.40	46.62	36' E of GI on KL
"	8.10	47.82	205' E of GI on KL
T.P.	7.43	48.59	
X	1.83	50.42	3
Surface	7.30	48.12	300' E of GI on KL
"	11.00	39.42	369' " " " " "
"	12.40	38.02	462' " " " " "
"	7.50	42.72	300' E of GI on MN
"	0.40	50.02	210' E " " " " "
T.P.	0.50	49.92	
X	6.22	56.14	
Surface	6.30	49.84	210' E of GI on OP
"	4.90	51.24	114' " " " " "
"	3.40	52.74	15' " " " " "
State St.	5.20	50.94	0' on GI on OP.
Surface	5.14	51.00	25' E of GI on RS
"	8.20	47.94	176' " " " " "
"	12.30	43.84	200' " " " " "
"	11.50	44.64	830' " " " " "
B.M.	3.89	52.25	At Day Page 28.



3.30 Acre
Tract



6299

Barthover Survey

4/10, 1912

In center of Silver Lake pipe
found two stones. One reset by
myself when pipe was put in.
Another 18" N. which Kiblinger
says, was set by Henry Moore
in line with Section 115.
Measured west 195 feet for Dr. V.
Lined in with H. Moore stake
and N.W. C. of Section 115 (Stone)

N. 84° W.

↳ Lined in with N.E. of N.W. Sec 115
Found Moore stone
N.E. Sec 115 = stone with
O.K. dist. 295 ch = 195 feet

LINE A

W. Line N.E. of Sec.

Offset 8' W.

Random S 5½ W. S 5½ W

Set stake on random at 8.00 Ch.

" " for distance at 8.00 ch.

8.90 ch O pipe on true line

Correction at 8.00 ch = 8' - 11.6" = 7 ⁹/₁₀ E.

Stake at 20.00 Ch.

Total dist: 40.61 O.K. C. S 5½ W

Come out 37" W. of stake at W.

Side of post

Total E. dist = 4' - 11" 5' - 6"

Correction at 20.30 ch = 8' - 2.53" E. =

½ dist = 30.30 ch Set stake

Set stake 5' S. of 20.30 ch on

random line

4652

LINE B Along N. Line.

Ch. E. from N.W. to N.E. Cor.

40.45 ch to N.E. Cor

Set stake for corner at 20.22½ ch.

N. 84° W.

↳ at W side post at point 2' - 3" West
of stone set by Mr. Moore without
measurement.

4652

LINE C

Along E line. offset 20 1/2 ch W.

6.43 ch to fence on S. side

Dr. Gaylor tract of 12.59 acres.

6.25 ch given by deed

S. 5¾ W.

stake at 20.00

" " 21.00

↳ Run to hole set at 20.13 ch
between stakes at S.W. and S.E.
corner of section in John
Mabenski's N. line

O.K. distance 40.56 ch.

Set stake at 20.28 ch for corner

stake + 8" □ on top 36" long

with brick bats

↳ Set stone in center of hole at 8.90
with brick bats.

LINE D

Cont. west along S. line 40 acres

20.16 ch
 Set stone for corner, 36" long
 wedge shaped top, 12" wide
 with mark center

20.16	20.30
<u>20.22</u>	<u>20.28</u>
20.19	20.29

20.29
<u>20.19</u>
18261
2029
4058
<u>4096551</u>

LINE E

with 0 Silver Lake Pixe

N. 25 $\frac{1}{2}$ ° E
 4.71 ch.

LINE F.

with PIXE

N. 22 $\frac{1}{2}$ ° E
 4.66 ch.

4652

50 M^c Brocken Survey on
St. Main St.

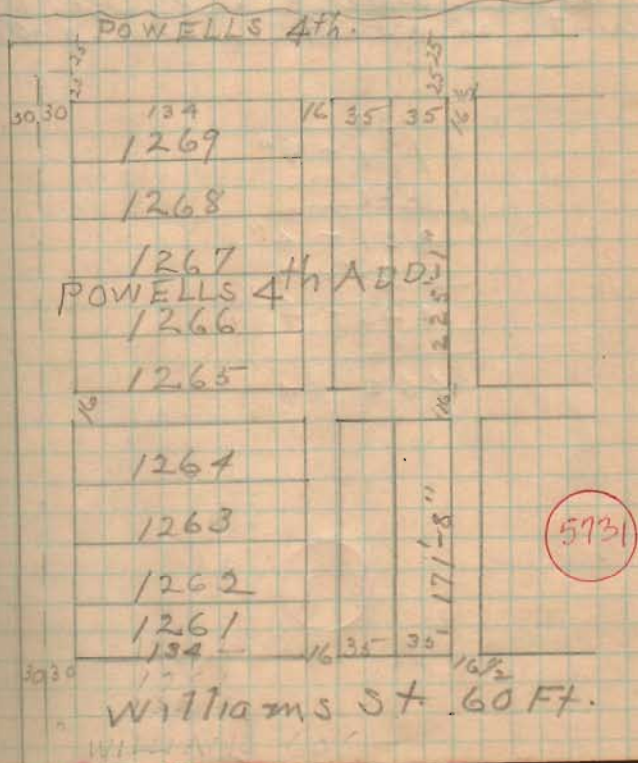
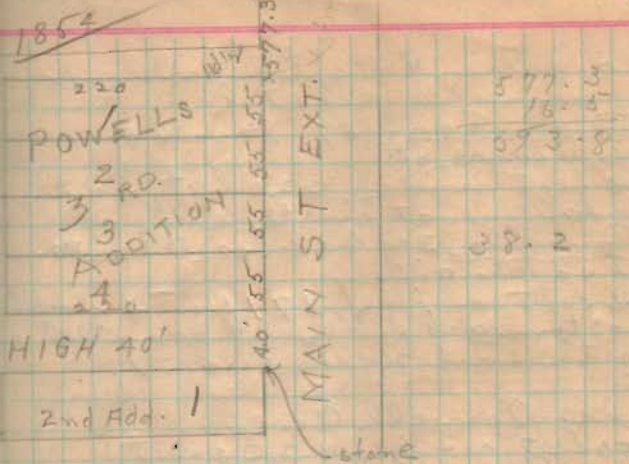
Detroit and Williams, agrees
in curbs. 0 at intersection.

Main and Williams cast iron by
Powell and Main - Spolar
Hydrant East 27.75'
Ally 3" S.W. 38.2'
Sugar 3" N.W. 39.4'

Powell and Detroit
was 26, 1903
at intersection of lines joining
lead points in cement curb
set above pin 7 3/4" x 12"
Iron valve by E. of N. 6.9'
same S. of E. 8.5 (edge)
same S. of W. 2.60 (edge)
Hydrant E. W. 27.2'

Williams + Detroit
Lead points are set in circular
curb at each corner of the
intersection and 14' from
the center line.

Detroit 60' wide
Main 80' wide
Williams 60' wide
Powell 50' except at Main.
Powell to Williams on Detroit
Plat 471'-2"
Main to Detroit on Williams
Plat 526'
Main to Detroit on Powell
Plat 526.5' Meas. 528'-4" 9/16, 1901
Williams to Powell on Main
No Plat or Meas. distance



Dedication of street of alley
by name Powell et al.
Block 2nd & 3rd Bigs 64.
William St.
60 feet wide, 220 feet north
of alley at north side of
Powell 3rd Add. (See Pg 80.)
Also an alley
16 feet wide, 171 feet 4 inches
northward from and parallel
with said Sullivan St.

Also Powell Ave.
50 feet wide, 4220 feet
northward from and parallel
with said last mentioned alley.

30
171 - 4"
220
421 - 4"
25
446 - 4
16
462 - 4

5731

Commenced chaining at \odot
High
Ch N. 240' to N.E. Lot 1
Powell 3rd Add.
Ch N. from this point 577.3 feet
to point on front of brick house
Ch 16 1/2 feet north to point
produce north of stub of
old post.
Distance apparently wrong.

Found Hydrant 4 inch meters
at Powell and Sullivan St. in
Sugar water tank.
Chained south to \odot Sullivan
and Main (Iron box)
458.4 feet
Distance called for by
street dedication #62-4"

Took \odot old post stub as line on S.
Set iron bar 1-10" W. of \odot post
for corner on line 40' W. of
 \odot Main St.

Turned L. 90° back to \odot St.
" " 89° as called for
in Keweenaw deed.

This place corner 9' N. of
south side of barn and 21' E
east of west side of barn.
Set iron bars for corners at
S. side of barn.

O.K. L. 89° 12'

Measured N. 55' to \odot

a nail of fence.

Measured 55' N. on Main

Set tack in bottom of nail for corner

Run N. line through set tack
in total distance $1\frac{1}{2}$ miles in
Mr. Chalkers back road 6"
south of E. side of road
D

S line passes
5 - 6 1/2" north of N.E. corner
of brick house
051 - 5 1/2" at N.W. of house
set stakes on line

Set iron bars at all corners
except N.W.

Records	1.25
Survey	3.00
Chamberlain	2.00
Iron Bars	.40
	<u>\$6.65</u>

5931

Hennesy Survey 4

Lots 578, 579

South St

50	50	50
45	44	43

42

41

40

16 1/2

39 (579)

38 (578)

37

36

14 1/2

35

34

33

32

16 1/2

31

30

29

28

27

26

20 1/2

Plot of
Beddows
2nd Add.
1851

T. & O. C. R.R.
gets about 30 feet
off west end of
lots 578, 579

100

50

50

50

16 1/2

220

16 1/2

220

723

12 1/2

110

194

30

Plot to
water

this is not

shown in plat

description says

30 ft. street

to lot 31

thence 16 1/2 ft. st.

to 60 ft. street

WATER St 60' wide

South St. 60'

16 1/2 55 55 55 55

12	11	10	90
1			2

Alley 16 1/2

21

Glycer 25
23

22 1/2

Alley 15'

33

34

alley 8 ft.

35

22 1/2

BOCKINGHAM

Brockingham parallel
with South St.

BEDDOWS 2nd Add

Addition
1849

Detrait 60'

30
220
16 1/2
220
15
106
8
106
15
736 1/2

4273

Produce of a line of a survey
 at west from Plat by tract
 measured west 266 1/2 feet

2 line of survey
 266 1/2 ft.

Iron box

2 line Detroit

2 line Buckingham
 266 1/2 feet

Hammersley Parcel (alder)
 4.8 feet W. of line at S.E. W
 4.9 " " W. of " " N.E. W

4273

Ch. S. from @ Anklamant.

Set pin 266 1/2 also 262 1/2
 " " 376 1/2
 @ Buckingham 738 feet
 @ Clatsop 1074.4 feet
 Plat West = 1073.5 "
 Surface 9 ft.

1073 1/2

79 1/2

994

.9

= 1 1/2 110 feet

250 + .23 + 16 1/2 = 266.73 ft
 for Hammersley N.E. W
 266.73 + 110.1 = 376.83 for
 S.E. W

at N.E. W of lot 579 turned
 angle for north line of 579
 making it parallel to line
 Anklamant
 Pt. N.W. of main which
 boundary should draw as
 on plat.
 N.E. W 2 1/2 N. of line.

376.83 + 110.1 S.E. W Lot 36
 set iron bar at R.R. on S. line
 Lot. 182 by Caldwell
 set iron bar 16' west of alley
 line in S. line Lot 36

Records 1 25
 Survey 3 00
 Clamman 2 00
 6 25

Campbells

Lot 1698 to Virginia St.

Stanton & Park

M. 36" Oak Dr. E. 32.60—

10" Spruce S.W. 25.80

Maple 8" S.W. 55.85

cut on Stanton from Main

⊙ curd Point to Glen ⊙

Park = 506.5 feet exact meas.

Park St. + High

Hyd. S.E. sloping measure 15'

8" maple S.W. 29.40

Electric Light Pole N.W. 20.1'

Stake ⊙ Park St + High Ave

East N. 54.30'

Stanton and Stanley on
Campbell St.

Iron bar

Ohio St. 50 feet wide

Ohio of Stanton

Iron bar

Bluishade tree 1" dia S.E. 24'

Elm shade tree 1" dia N.E. 34.8'

High to Stanton on Ohio

358.6'

1786

Add.

High Ave.

Stake at Park and
East High

Mod. M.

Electric light pole N.E. 23.4'

N.W. cur. Howard house S.E. 42.35'

High & Stanley

Iron bar

Double history N.W. 48.7'

Stake west " 44.0'

High & Virginia

Iron bar 20' S of N. line

High & Ohio

Iron bar W line Ohio

20' S. of ~~line~~ N. line

Old iron bar N line Ohio

St. + center High Ave.

N.E. + 2 story frame. Pres.

plum tree 8" dia S. 66 1/2 W. 143.2'

Cherry tree 8" dia S. 4 W. 48.5'

Apple tree 12" dia S. 54 1/2 E.

67.9'

Stake stake S. 9 1/4 E. 25'

See page 96

CAMPBELL'S ADDITION

High (East) of Green
iron bar 6" below surface

W. Oak 22" dia. 367' E

N. 3. 2'. N. E. Cor. foundation

1 1/2 story frame house

S. 21 3/4 W. 66.7 feet.

Stanton Street

Plat dit: Campbell to
Virginia 275'-9"Plat dit: Virginia to
Ohio 486'

150
16
119' 1"
11
285' 1"
26
311' 1"

1964

CAMPBELL'S ADDITION

4/28 1912

H. Murphy ch. 1/2 da.

Drove east of High of Green
No. 11"Found @ High on Park Meas. N.
54.33 for @ E. HighFound iron bar at @ High of
Stanley with double Piggy
and stake 44 ft. west.Found iron bar @ Ohio
and High.Angle in High St. 21'-10"
West of iron bar at @
Stanley of HighFound 1" @ park
StantonFound iron bar @ Stanton
and OhioFound iron bar @ Stanley &
Stanton.Found old stake at S. W. W.
Lot 1689Meas. W. 291 feet from @
Stanton to Stanley on Stanton
for W. line Lot 1689
Produced Volume 1689 S. to
N. line E. High

Margaret Lunnery

Mad River & Williams
 Stone Wit:
 Hydrant N.W. 53.2'
 Elm E 20.9'

Mad River & High

Don bar
 Wit:

Sample post N.W. 29.5'
 Hydrant S.W. 27.0'

Brown to High on

Main Mass. Dist: 369.5'

Margaret Lunnery

Leslie Higginbotham 100

A.S. Moore Jr 100

1422

Margaret Lunnery

Mad River & Williams
 45 ar.
 Elect. Pole N.W. 26.95'
 Same S.E. 22.43'

Elm 12" S.W. 26.9'
 curb E. side 15 feet

Main & High

No monument

One Wit:

S.E. of Lawrence's station all
 39.8' - Sample post
 meas. north 369.5 feet
 from Mon. at O Brown

O of High at intersection
 of 39.8' and 369.5'

This point is with the
 center line of curb
 returned on High

Marquis Survey.

1884

Deerhoff to

W.V. Marquis.

Pt. Sec. 35

Begin at stake in east side
Cinn. St. & N. side High St.
Measure north east line Cinn.
St. N. 75 feet to stake at S. W.
of small E. side lot.

Thence north the south line
of said lot 220 feet to stake at
S. E. corner.

- S. 75 feet to stake in N. side
of said lot.

- S. West 220 feet to beginning

358
1900

Sec. 35 to

John A. Bruce.

Begin at stake on Cinn. St.
being 20 feet east of line
and 25 feet north of north
line of High St.

Thence north east side of
Cinn. St. 130 feet to a stake
at S. W. corner of alley tract
east 200 feet with said
Palmer & Co. line and facing
his S. E. corner at 199 feet to a
stake.

Parallel with line Cinn.
St. south 129 feet to a
stake, 75 feet N. of High St.
220 feet west to begin.

Marquis Survey.

Measure north from 3 High
Street 25 + 75 + 1/2 = 100"
on line 31' East of 0 Main St.
to north end of Marquis
walk which is on line
with iron fence to east.

Measure north from 0 High
on line 270' East of 0
Main St.

Run line 97' from center
of High Street which would
be a 3 foot offset line

Measure to old fence on corner

at alley line 4' - 00"

at W. end board line 3' - 8 1/2"

E. end corner line 3' - 8"

to center fence

at West corner fence 4' - 5 1/2"

to center fence

Fast B. measure to S. side board

1422

Massachusetts

Massachusetts

main part

1 +29 3.6 700 dd first half

1 +53 3.8 " " " "

1 +83 4.1 " " " "

1 +89 4.1 " " " "

1422

Marvel Survey

Lots 589 - 590

Exceed 55 feet of all of
W. end of each lot
vol 110 - 103
vol 104 - 77

Plot Dist. @ Main to
@ Detroit on High

40
220
16 1/2
220
30

526 1/2

Plot Dist. @ Main to @ Detroit
on Brown

40
220
16 1/2
220
30

5/16
meas. 528' 7 1/2"
526' 6"
2' - 1 1/2"

set nail at

526 1/2

Plot Dist @ Brown to
@ High on Main

20
120
110
16 1/2
220
15

5/16, 291 =
meas. 503' - 3 1/2"

501 1/2

High 40'

589 + 60

590 + 60

591 53

592 53

16 1/2

438 53

437 53

436 53

435 53

Main 80

Brown 30'

1874

On Brown

Plat dist $526' - 6''$ Meas. " $528' - 7\frac{1}{2}''$ Surplus $2' - 1\frac{1}{2}''$

$$40 + 220 + 1' - \frac{3}{4}'' = E.$$
 line alley = $261' - 3\frac{1}{4}''$
Set pin at $291' - 3\frac{1}{4}''$ on
10 foot offset line. set nail

Set pin at 37 feet W. of @ Main

On Main

Plat dist. $501' - 6''$ Meas. Dist $503' - 3\frac{1}{2}''$ Surplus $1' - 9\frac{1}{2}''$ Marvel lots = $120' + 5\frac{3}{4}''$ $121' - 6''$ to end stone wall

On alley

Meas. Dist $503' - 4\frac{1}{2}''$ Plat Dist $501' - 6''$ Surplus $1' - 10\frac{1}{2}''$

$$\frac{120' - 4''}{450' - 13''}$$

$$\frac{22\frac{1}{2}}{15192}$$
 $120' + 6'' = 120' - 6''$ $121' - 6''$ to old fenceW. line of brick house
is about 12" in alleyset stake at 55 from E line
alley and 20' from S High.also set stake 55' E. of E line
alley and 106' - 10" from

S line High

1874

ALLEN SURVEY

60 feet

134	1260	3535
134	1257	10
134	1258	10
134	1257	10
134	1256	10

Land

16 1/2' wide

220	605	220	60
220	606	602	60
220	607	603	60
220	608	604	60
220		220	60

High 40'

DETROIT ST.
60' wide

9393

W. HIGH ST.

Survey for electric cable and
W. G. Clark. 5/14, 1912

H. R. Reckley, Ch.



On High: 30
220
16 1/2
220
40

Plat dist: 526 1/2

Meas dist: 529 3/4

Surplus = 2 1/4

30
220
8
1-4 1/2

259 = 4 1/2

Detroit & Williams
 intersections, measured
 in grade.
 On Detroit High to Williams

506'-11"

20

220

16 1/2

220

30

506 1/2

5" Surplus

7/8" to each lot

Set tack or nail on
 Detroit at 75' 5/8"

20

55

75' 5/8"

and at 130' 1/4"

and at 228'

9393

SURVEY

Set nail in @ Main
 at 248 from @ High

Measure Dist: 529'-5" @
 Detroit to obtain on
 alley line

That Dist 526'-6"

Surplus = 2'-11"

Set nail in alley on the side
 of lot 205 and 8 feet east
 of west line of alley

259'-5 1/2" E of @ Detroit

Set pin at 75' and 119'
 and 122' from @ High

McLEAN SURVEY

1899

N. 60° 15' W

55.7	55.7	55.7
135.4	240.9	135.2
240.9	240.9	136.
46.6	46.6	46.6

MAPLE ST.

43.3	43.3	43.3
150.1	240.6	150
240.6	240.7	150
33.3	33.3	33.3

2409

2410

2411

2412

2413

2414

2415

2416

2417

2418

2419

2420

2421

2422

2423

2424

2425

2426

2427

2428

2429

2430

2431

2432

2433

2434

2435

BEECH ST.

2411

2421

2422

2423

2424

2425

2426

2427

2428

2429

2430

2431

2432

Stone Watsons land

LOT 2418. 1912

Fairview Hold.

Stone antyquated by 2 1/2
 a massive quantity of a large granite
 east side of lot 23.2 feet
 distant which is 5.3 feet
 south of the point of projected
 line.

Line with said described
 line N. 60° 15' W 369.2 feet to
 a stone corner building
 Richman & Howell Tract which
 is on line which is also
 30.4 feet from a stone Mon
 in Main St. Corner Hub and
 Snyder's O. d.

thereby with the Howell
 Richman line 648 feet to
 a stone corner to N. 37° 30'
 Richman & Howell Tract
 - S. 68° E. 25.2 feet to a
 pin corner in O. Hub lot
 - with an angle of 105° 30'
 N. 37° 30' E. with Rich
 at 620.4 feet to a stone corner
 at place of origin.

Mon. at street intersections

6405

Deed Record Vol. 86 P. 504.

Pt. 5245 nd of Sec 35

Maggie Ginn Exr. to Jeannette Nelson 1894

Begin at stake in the easterly
line of the J. T. Richeson tract
12 feet north easterly from the
S.E. $\frac{1}{4}$ of said tract at the meet
northwesterly $\frac{1}{4}$ of a 12 ft. alley

— with line of said tract
N.E. $7\frac{00}{100}$ ch. to a stake.
— S.E. $3\frac{33}{100}$ ch. to a stake in
the N. line of Rush St.

— with N. line of Rush St.
S.W. $7\frac{00}{100}$ ch. to stake, 12 feet
N.E. from S.W. $\frac{1}{4}$ of David Watson
tract at the N.E. $\frac{1}{4}$ of said alley
— with the easterly line,
thereof N.W. 3.18 ch. to begin.

General Warranty Deed
 $\frac{1}{2}$ acre more or less

Vol. 90 P. 158 1898

Maggie Ginn Exr. to Jeannette Nelson

Pt. 5245 nd of Sec. 35.

Begin at stake in east line of
Richeson land and in N.W. $\frac{1}{4}$ of
land heretofore conveyed by grantors
to grantees.

— North easterly with Richeson
line 50 feet to stake.

— S. Easterly 203 feet to stake
in westerly line of Rush St.

— with said line of Rush St.
South westerly 50 feet to a
stake at the N.E. $\frac{1}{4}$ of the tract
formerly conveyed to said grantee
— in a N.W. direction 174 $\frac{1}{2}$ ft.
to begin.

McLean Survey $\frac{1}{4}$, 1912

D.C.R. Ch. 1

Found old stake at S.E. $\frac{1}{4}$ 2419

" " " " S.E. $\frac{1}{4}$ 2420

Meas. 50.5' \pm 9" between these stakes

Meas. from stake at S.E. $\frac{1}{4}$ 2419
northward check on old stakes found

Found remains of old stake at N.E. $\frac{1}{4}$
2417 1" below surface

Also stake at N.E. $\frac{1}{4}$ 2416

Decayed 1 $\frac{1}{2}$ " below surface.

Also stake 4" above surface

at S.E. $\frac{1}{4}$ 2414 and N.E. $\frac{1}{4}$ 2415

Also stake at N.W. $\frac{1}{4}$ 2418

" " " " S.W. $\frac{1}{4}$ 2414

Dist. = 150' from stake at front to above stake

Also 1 post at N.W. $\frac{1}{4}$ 2413

Dist: O.K. 50.5

Found stake at S.W. $\frac{1}{4}$ 2418

— 5" N. of siding on chicken house

This stake 150' from front end
50.5 ft. on alley line

Distances check D.K. on Alley
line on old stakes found.

Set stakes at both $\frac{1}{4}$ s on W.

Line of Rush Ave

6405

FISHER SURVEY

N. LINE LOT 1064

Arburn ² of Ludlow

Iron Bar

Hydrant N.W. 27.30'

S.W. Cor. Stone foundation of house

N.E. 63.56'

Iron Lamp post S.E. 27.40'

N.E. Cor. house S.W. 63.35'

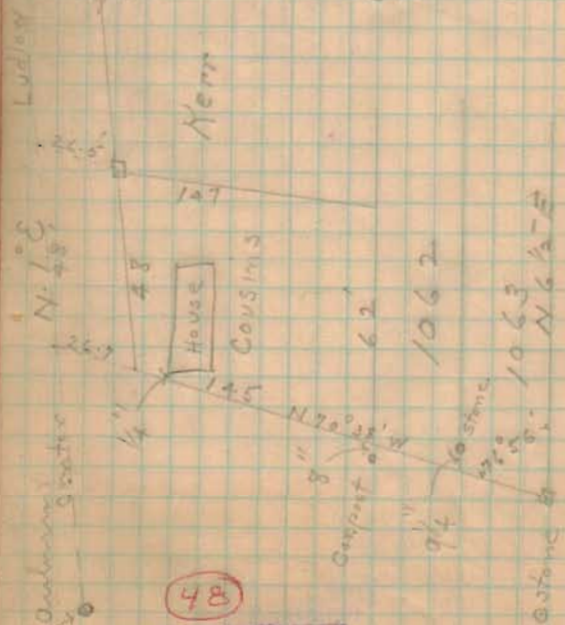
Eastern ² of Ludlow

Iron Bar

Lamp post N. 33.3'

Maple S.E. 54.4'

Maple S.W. 32'



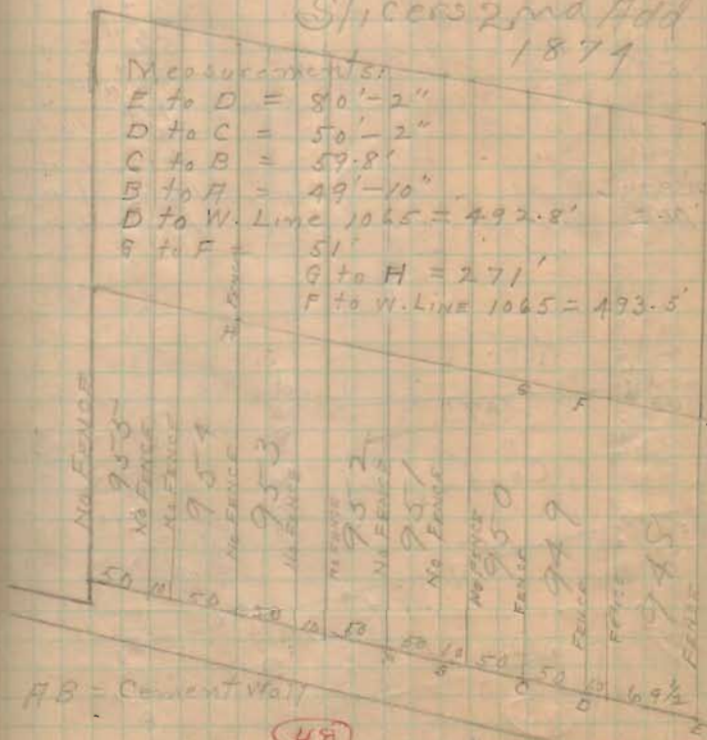
INDEXED ON MAP

Found intersection of
utilities at \odot only street
Ludlow .8 1/2' E. of sewer
manhole cast iron frame.

Found iron bar \odot Ludlow
and Eastern Ave.

Ran line N. 1° E

Slices 2nd Add
1879



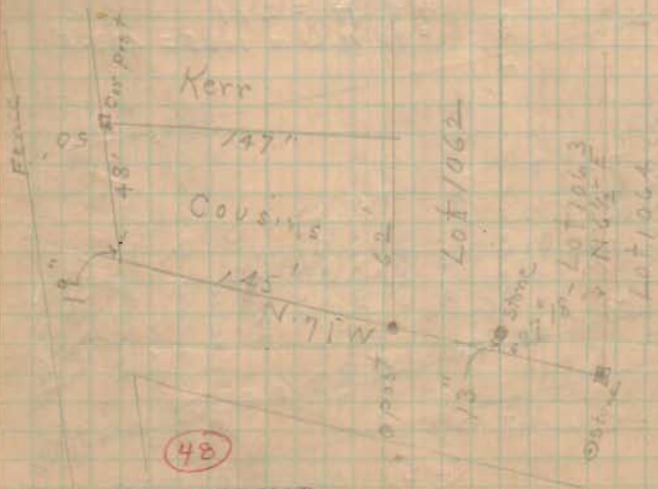
INDEXED ON MAP

Lot 1063 (Roof) meas.
57.8 feet from Sidders
Corner post to S shed (Sidders)

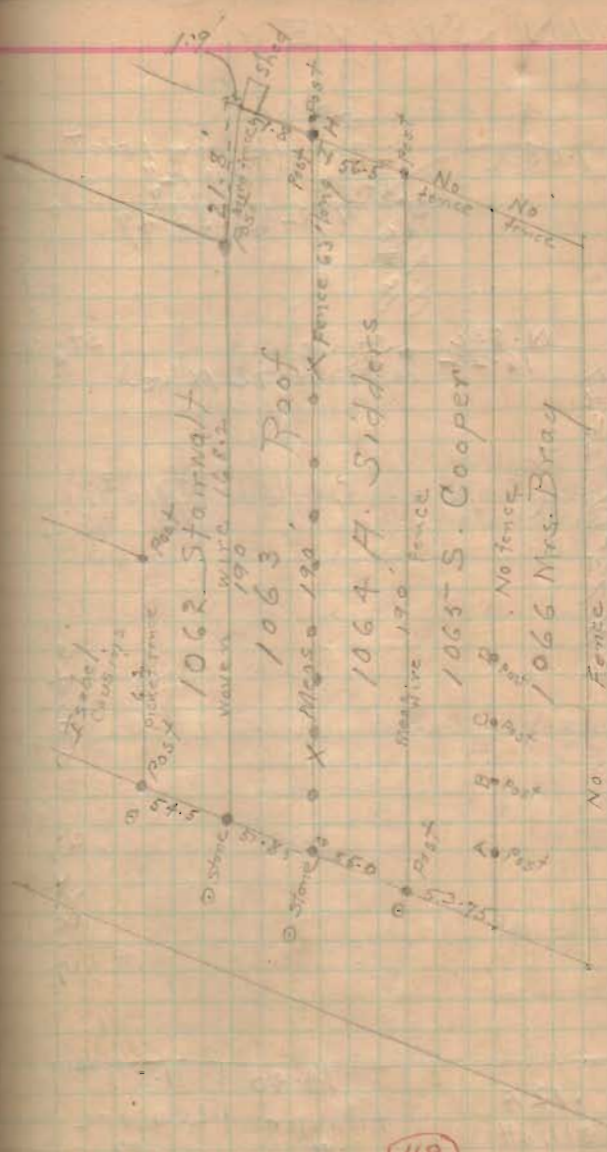
W. LINE Lot 1064

Ran 12" offset line along stone
at front to post at local
dist from offset line to spring "

1st post from sidewalk	7 1/2"	(New)
2nd "	7 "	"
3rd "	6 "	"
4th "	5 1/4"	"
5th "	5 "	"
6th "	4 1/4"	"
7th "	9 "	(old)
8th "	7 1/2"	6"
9th "	12 "	11"
10th "		



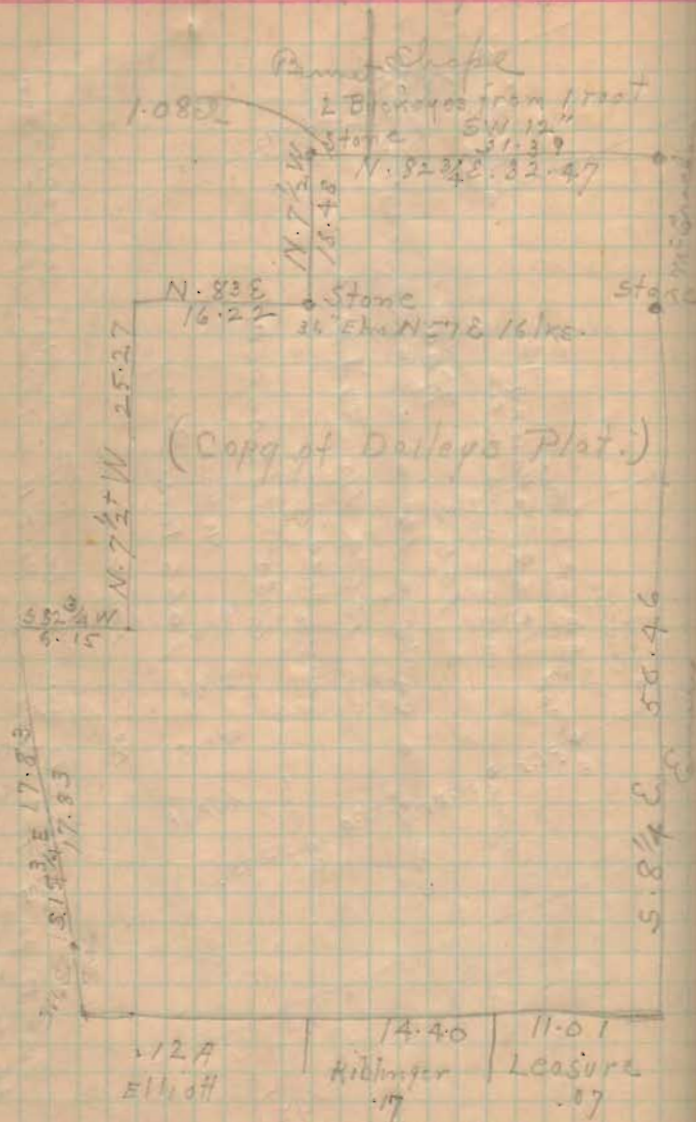
INDEXED ON MAP



INDEXED ON MAP

ABCD said to be built by Rush for Cooper
Post I to H 17" Post I to Post H in line. 190 feet from
H to stone at G

D.U.N. SURVEY



Richland Tp. 6/6/1912

O.C.P. Co.

Stone S. & E. Lot Shape
 2-3" S. & S. side big anchor post.

N.W. L. Emery
 Anchorpost N. 12"
 " " W. 5"

Set stakes on E. line on
 14' offset line 14' to N.
 Also set stakes on true line

Mens. W. from S. E. 1
 stakes at
 5-50 1/2 ch

11-01
 18-21 1 1/2 poles east of road gate
 25-41
 37-37 1/2 6 1/2 ch. S. of pick fence
 at 3 poles x 3' slate north of east
 end of pick fence

Stake on true line 4 lbs
 N.E. of old stump.

986

E. Line along Emery

50.48 ch. to stake 12' S. of
anchor post
Stake set for distance but
not on line at 25.23 should
be set 1/2 in. north.

E. Line along W. Cracker

9.17 to N. end wire fence
18.52 ch. to stone S. E. of Shafe
and N. E. of Dunn

N. Line along Shafe

Found old stake at 15.693 ch.
31.39 to stake S. W. of Shafe
32.47 to stone E. Dunn & Bennett

N. LINE.
Along Bennett

1.08 ch.

W. LINE.
Along Bennett

1.08 on N. side
18.48 " N. "

19.56 ÷ 2 = 9.78

9.78 = 1.08 on N. + 8.70 on W.

Marked 2nd Locust post from N.
end of Dunn picket fence 9.78
from Shafe.

18.48 ch. to stone Bennett S. E. cor.

This stake to be moved east 54 lbs.

986

N. Line along Bennett

Set stake at 8.11 ch. 5 lbs 3"
S. of S. of Duns end post of
ficket fence.

16.22 ch to stone in place
under wire fence and
John Elders N.E. 1

6/12, 1912

Arrived at Dun farm at 7.30

Commenced at L Stone N.W. of Dun in
Bennett N. Line at 8.30 A.M.

John Gebby Jesse Bennett A Cox
Nat Roebuck John Elder O. R. Richey
Finished Bennett of Duns 2 stones
at 4.0 o'clock

commenced Elder of Duns 4 at
4.0 o'clock

Quit work at 5.50 o'clock

6/12 commenced work 6.30 A.M.

Finished above corner Elders Bennett
helping

8.00 o'clock commenced shape

division post J.R. Gebby & Nat Roebuck

8.30 commenced McWaters, shape

of Dun

Set stake at 9.25 ch for division
post in McWaters line

10.30 commenced M. Gracker
and Emery hole for corner

5.30 finished Emery helped

6/14 arrived 7.50 A.M.

Nat. Roebuck

Ves. Watt

Ed. Johns

O. C. Richey

Commenced on S.E. 4

Set Emery secure corner

" Kibbings-Kibbings corner

" Kibbings - Elliott corner

" Elliott-Dun - M. Gracker lumber.

926

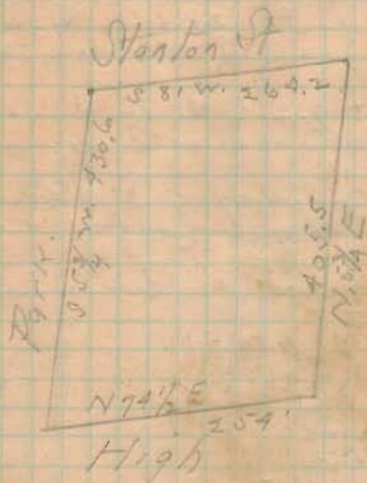
Set up at Park + Stanton
bearing Stanton N 81° E

Park St 81° S 81/4 W. 430.6'

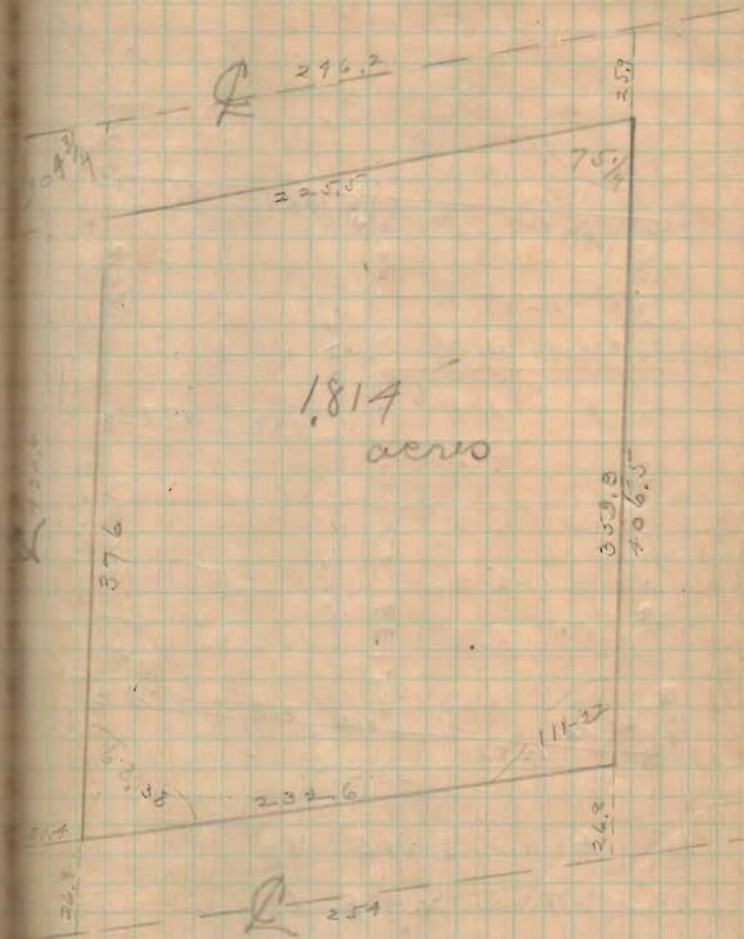
High St N 74 1/2° E. 254'

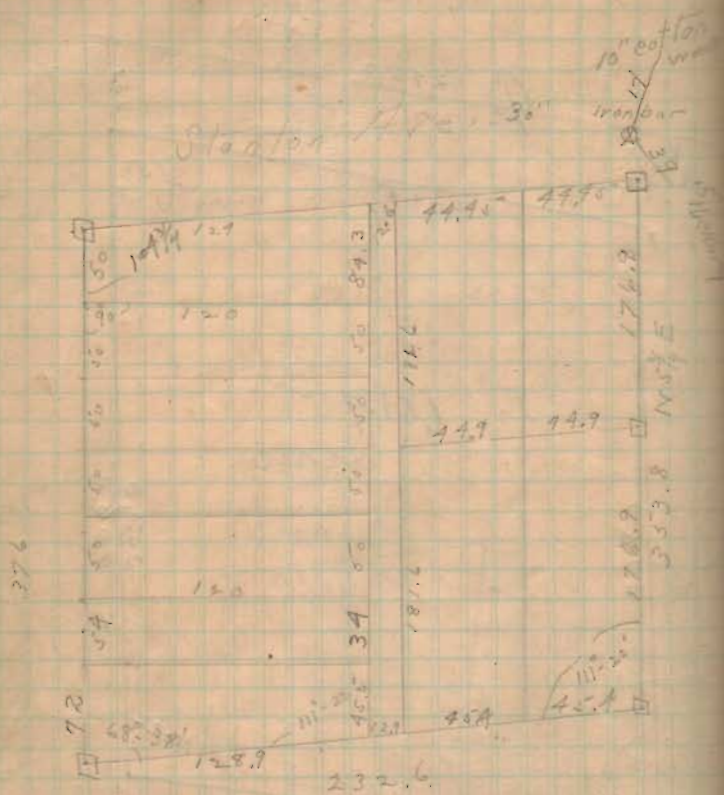
East corner land N 5 1/4° E 405.5'

Stanton S 81° W. 296.2' to begin



2751





15" Hickory S. 27 E 39'

10" Cottonwood N. 47 E 17'

2751

SURVEY OF ED. BUCHENROTH FARM

Nov. 12, 1912

ED. BUCHENROTH

JOHN ANSLEY } Chairmen

FRANK BUCHENROTH - FLAG

SURVEY FOR ACRES.

W 1/2 S. W. Qr. Sec 36 T 3 R 14
80 acres

E 1/2 S. E. Qr. S. 8. Qr. Sec 6

T 3 R 14 20 acres

INDEXED ON MAP

6866

SURVEY OF ED. BUCHENROTH FARM

LINE A ALONG E. LINE

Begin at North-East Corner Stone
 1 m @ McColly Bridge pike
 Offset 8 ft West of stone
 Thence S. $4^{\circ} 10'$ W on Ranging
 (Wire fence)
 Line S $2^{\circ} 1/2'$ W O.K. Csc.
 At 1782 feet 8 ft west of O of post
 of wire fence

At 2684 feet 4 stone S. E. corner
 40.67 ch
 of Buchenroth and S.W. L. Onisley and
 in March's N. Line
 Came out $9^{\circ} 1/2'$ feet West of corner
 Westing = $1^{\circ} 1/2'$ feet

LINE B ALONG S. SIDE

Offset 16 ft North

O.K. Csc (N. $84^{\circ} 3/4'$ W. N $84^{\circ} 3/4'$ W.)
 N. $84^{\circ} 48'$ W
 O.K. Dist 1361 ft to 1 Stone N.W.
 20.62 ch.
 - March end in Shroyers S.E. Line

LINE C ALONG W. SIDE

Offset 16 ft. West
 N. $4^{\circ} 1/2'$ E.
 O.K. Csc = N. $4^{\circ} 1/2'$ E
 O.K. Dist = 1342 feet to 1 stone
 west of Buchenroth S.W. 15 m =
 20.33 ch
 N.E. L of Shroyer

LINE D ALONG S. LINE

Offset 16 ft. N. $85^{\circ} W$ N $85^{\circ} W$
 670 feet to 2 stone Albert Lees
 10.15 ch
 S.E. L end in Shroyers N. Line

6800

LINE E ALONG W. LINE
 Albert Lees E. Line

1336 ft to 2 PIKE
 20.24

N 4 $\frac{1}{4}$ E with fence line

N 4 $\frac{1}{4}$ E

LINE E with 2 PIKE

S 85 E

2033 feet to beginning

30.80

6666

BUCHENROTH FARM

11/12, 1912

LINE	DIST	Dir	N	S	E	W	D.M.D.	N. Area	S. Area
A	2684	S 41/2 W		2675		210	210.6		5633.55
B	1361	N 84 1/2 W	123.3			1355	1776.6	2190.55	
C	1342	N 45 1/2 E	1337.4		111.0		2021.0	4040.285	
D	670	N 85 W	59.0			465	3578.0		
E	1336	N 4 1/2 E	1332.5		99.0		4147.0	5,525,048	
F	2033	S 85 E		177.0	2024		2024.0		3582.48
	9426		2852	2852	2234	2234		9995.490	921.603

Error of Closure = 1/4 4098

43560 | 90748.87

2 | 208.33

104.16 closed.

6866

INDEXED ON MAP