

Out lot # 125

Belle fontaine

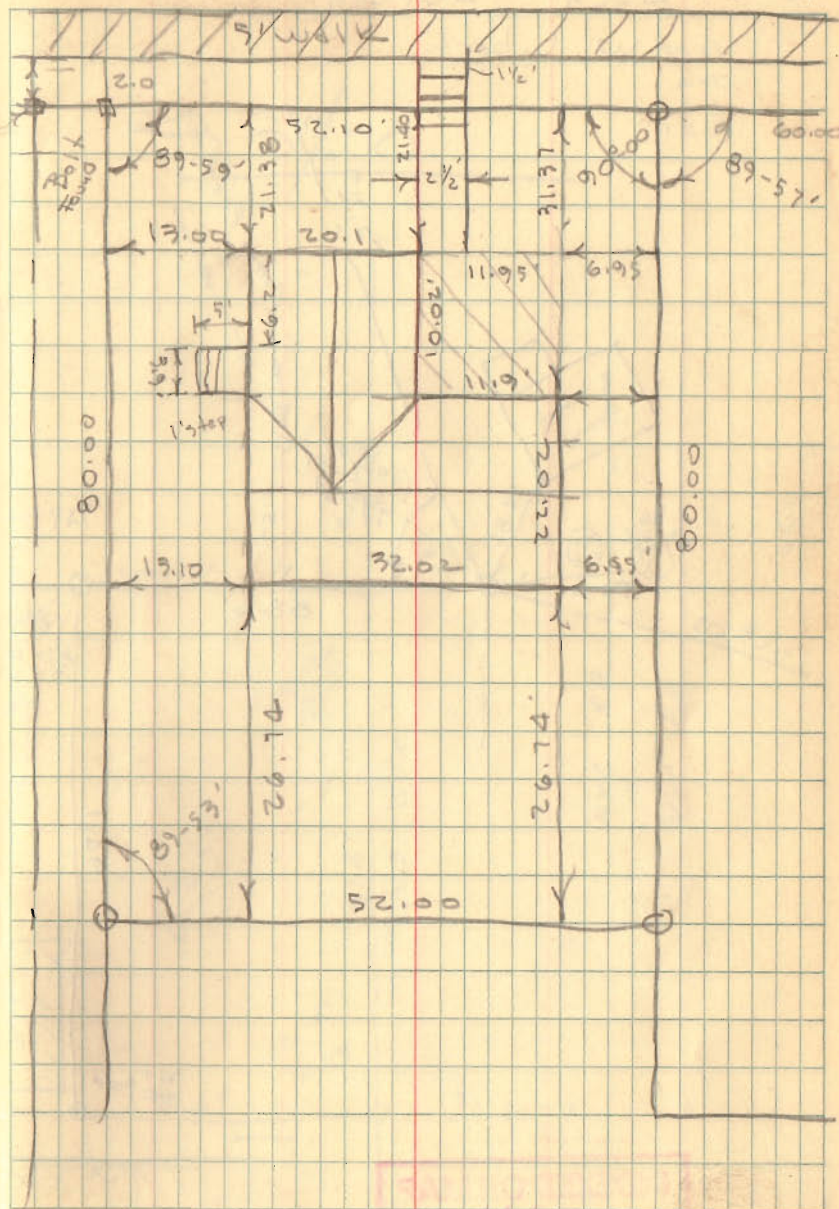
For Harry Parmen  
312 Spring St.

1/4 pin  
found

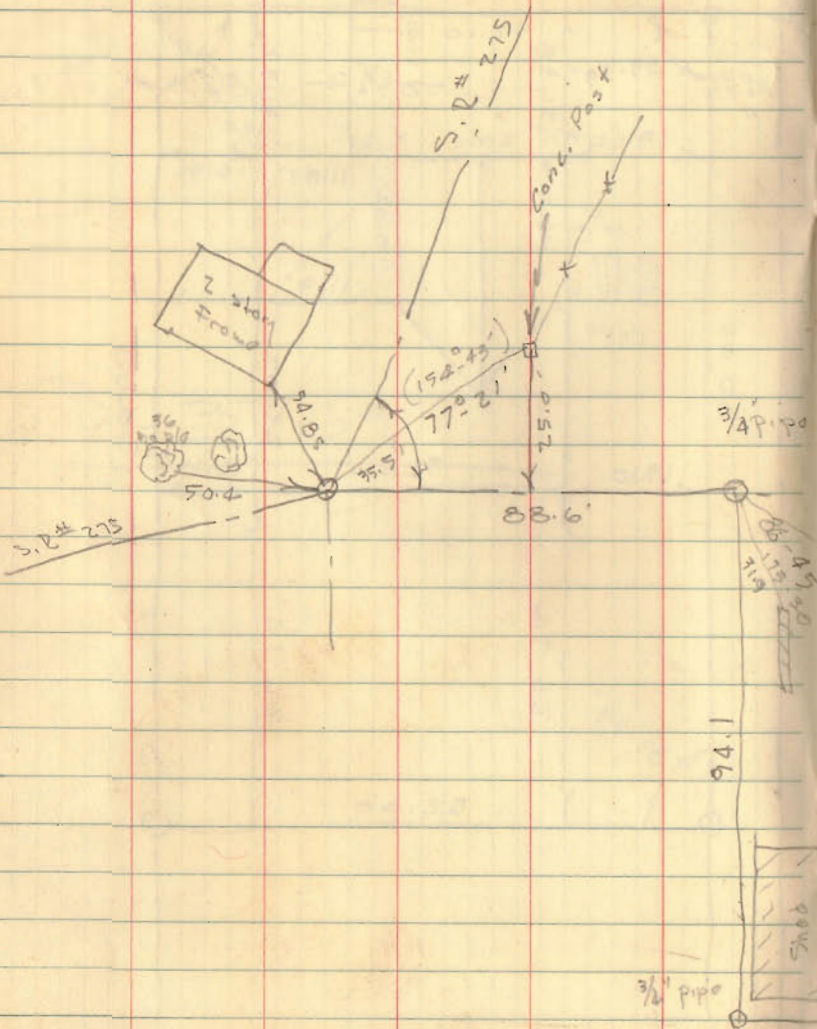
Bl 3/69

INDEXED ON MAP  
2988

Dodson - Smith Aug. 10, 59  
SPRING ST. 1



Esch Survey  
w. Liberty



INDEXED ON MAP  
2945

Low. Block  
meat store

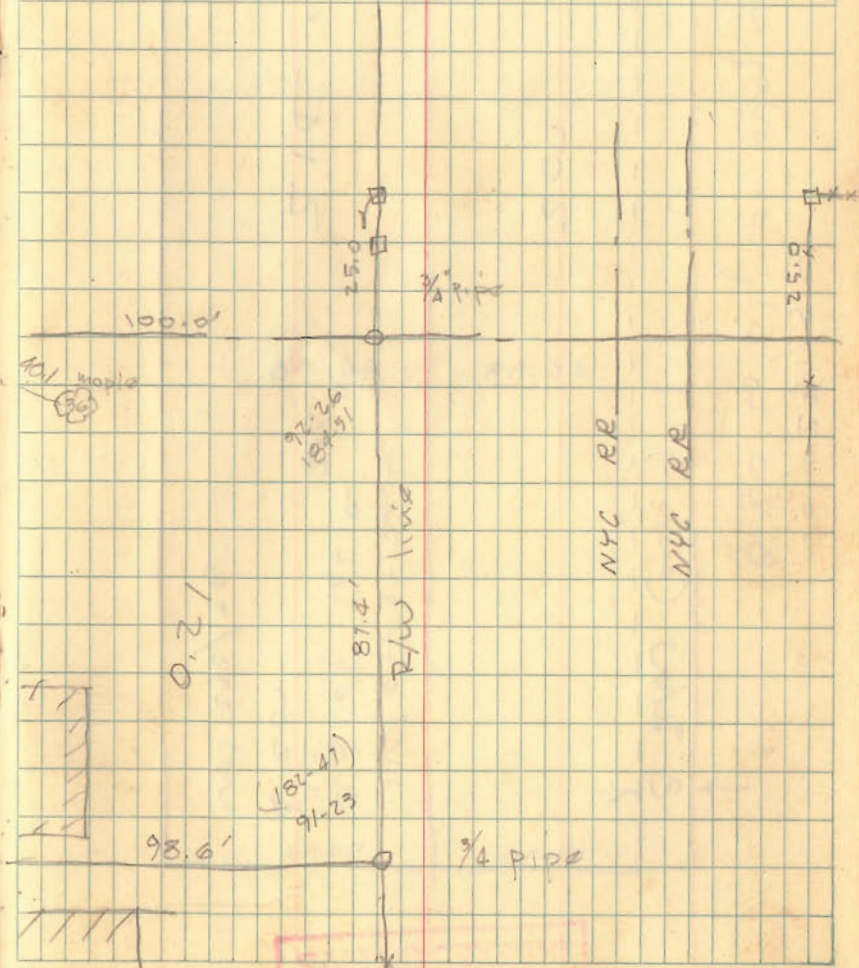
Dodson  
Geoslin

8/27/60  
85°

2

~~#3/70~~

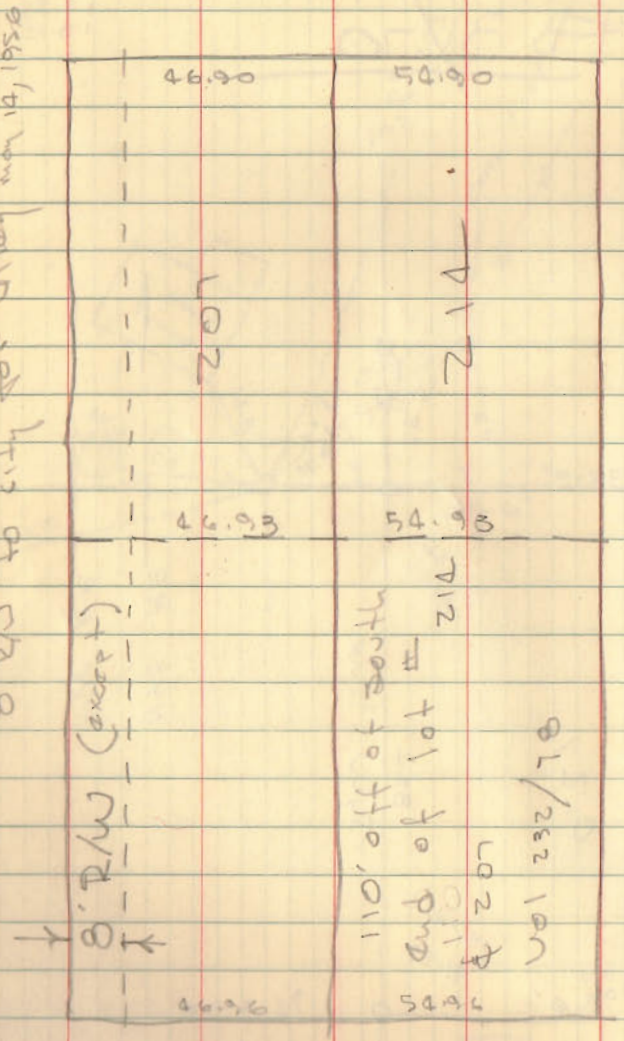
99.35  
4.75  
13.55  
18.55



INDEXED ON MAP  
2945

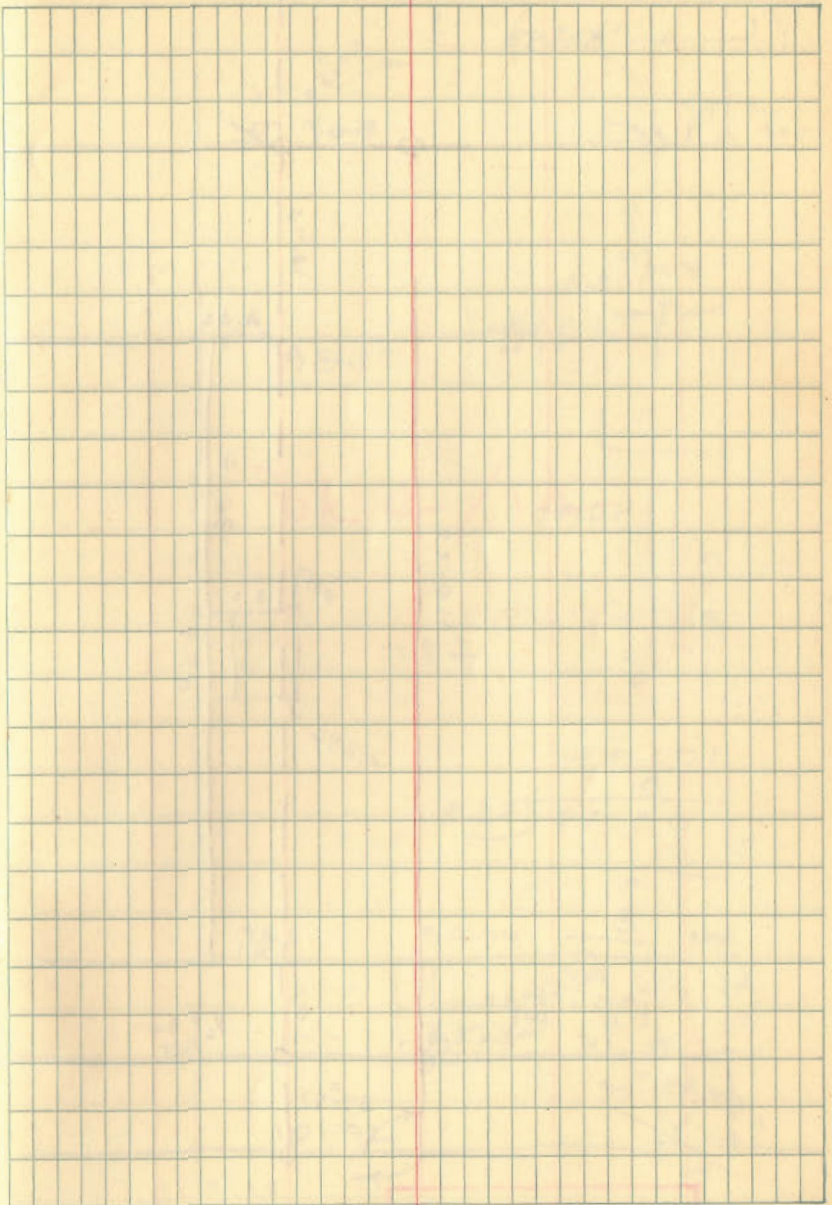
6

8' R/W to City of Dallas  
8' R/W to City of Dallas  
8' R/W to City of Dallas  
8' R/W to City of Dallas  
8' R/W to City of Dallas

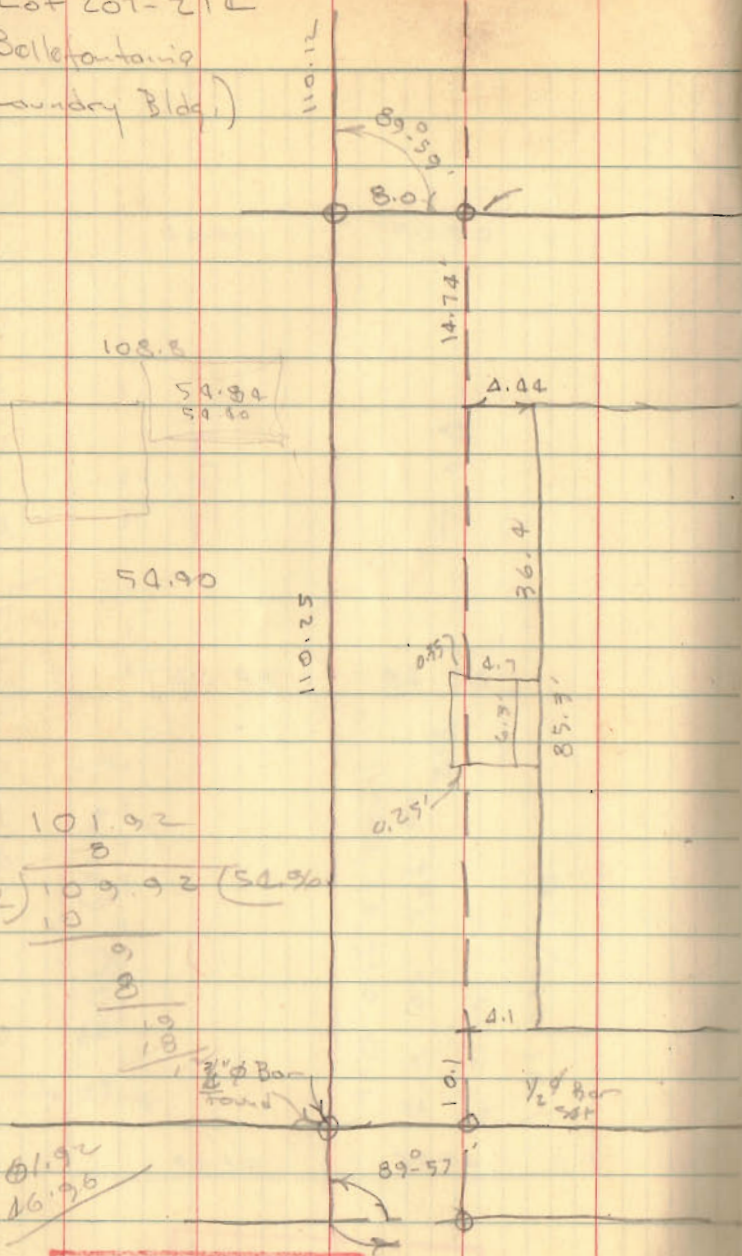


INDEXED ON MAP  
1171

3



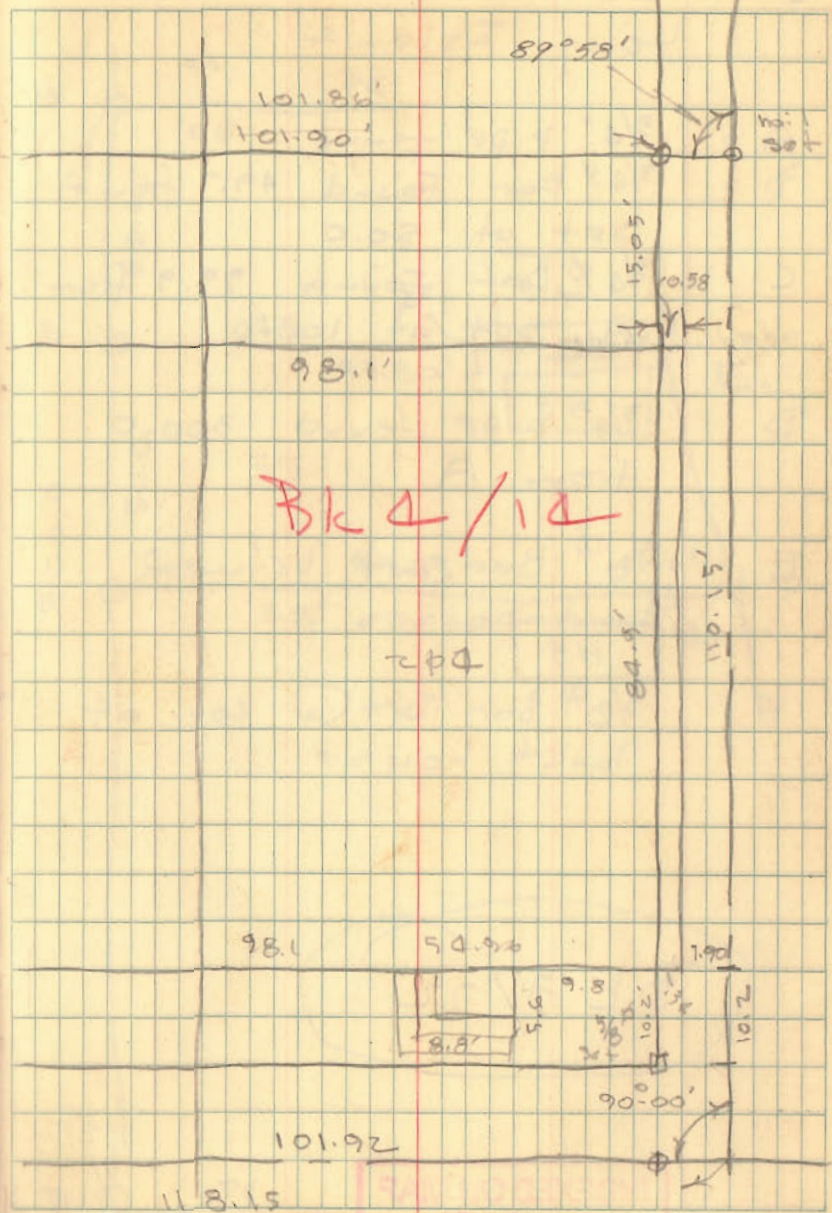
Lot 207-214  
 Bellefontaine  
 (Laundry Bldg.)



101.92  
 8  
 2) 109.92 (54.96)  
 18  
 8  
 18  
 18

101.92  
 46.96

INDEXED ON MAP  
 7004



Bk 2/12

INDEXED ON MAP  
 7004

Lot 55  
Long Island

- A =  $\frac{3}{4}$ " pipe found  
B =  $\frac{3}{4}$ " Bar Found 49.7 from A  
set at 50.0  
C =  $\frac{3}{4}$ " Bar Found 99.9 from  
A, set at 100.0  
D =  $\frac{3}{4}$ " pipe found 300.0  
from A.  
E =  $\frac{5}{8}$ " Bar set between  
boat houses  
F =  $\frac{5}{8}$ " Bar set @ cor. of  
Boat house

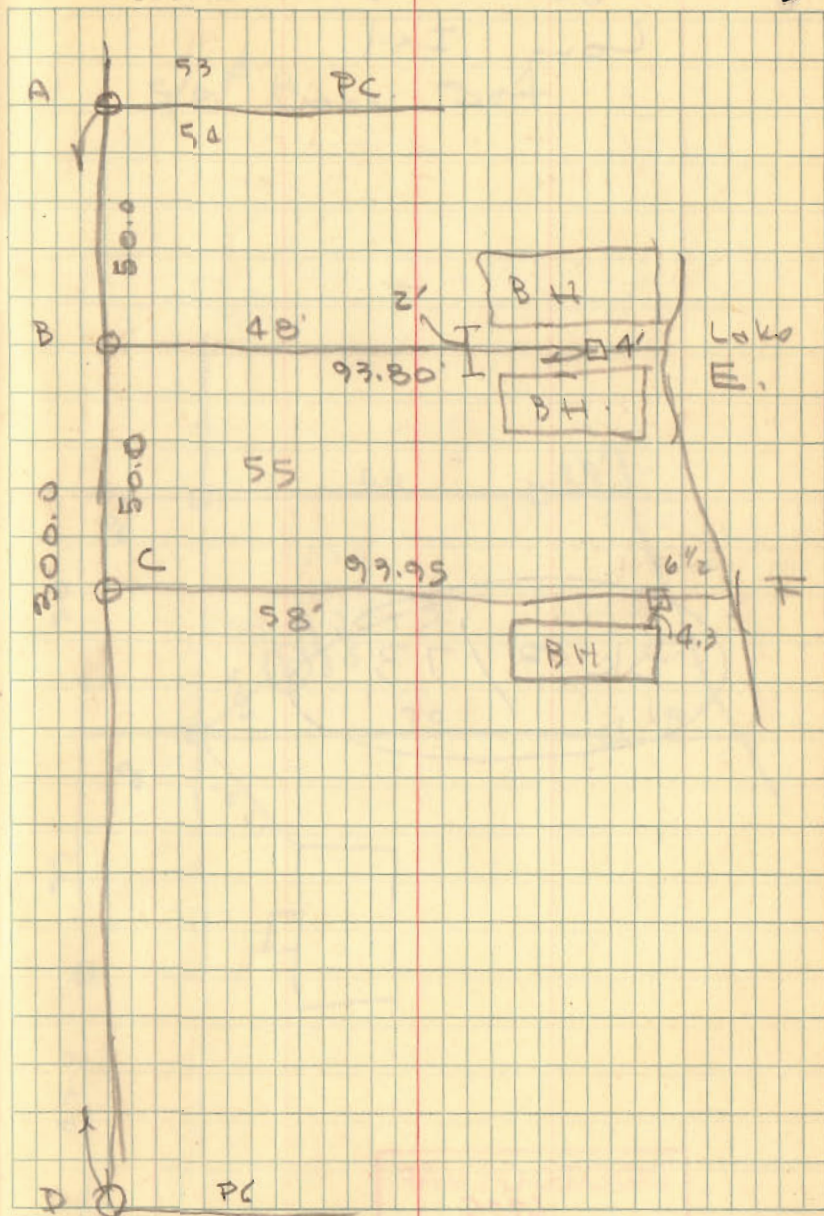
Bk 3/72

INDEXED ON MAP  
2256

Dodson  
Geoslin

9/24/60

5



Pipe  
Found

Lot # 3  
Long Isl

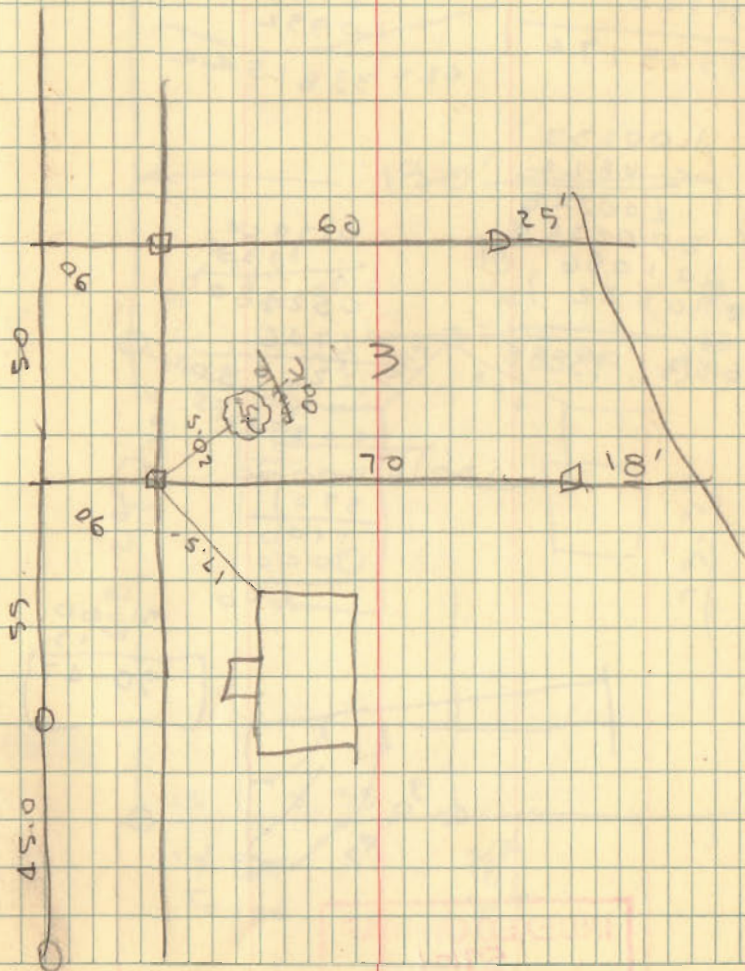
Bk 3/73

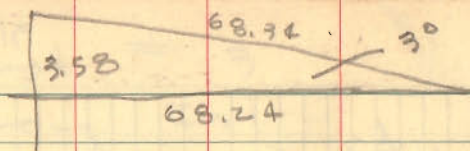
INDEXED ON MAP  
6225

9/24/60

6

5/0<sup>A</sup> Barn Set





68.24  
 .0522  
 27296  
 13648  
 34120  
 3575776

03492  
 682  
 26984  
 27936  
 20952  
 68.2 3381544

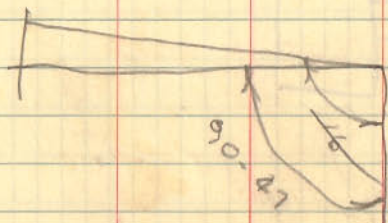
1.00137  
 68.24  
 200548  
 200274  
 801096  
 600822  
 68.3 35888

01740  
 130  
 052380  
 01746  
 226980

00384  
 130 0.50000  
 390  
 1100  
 1040  
 600

91-60  
 13

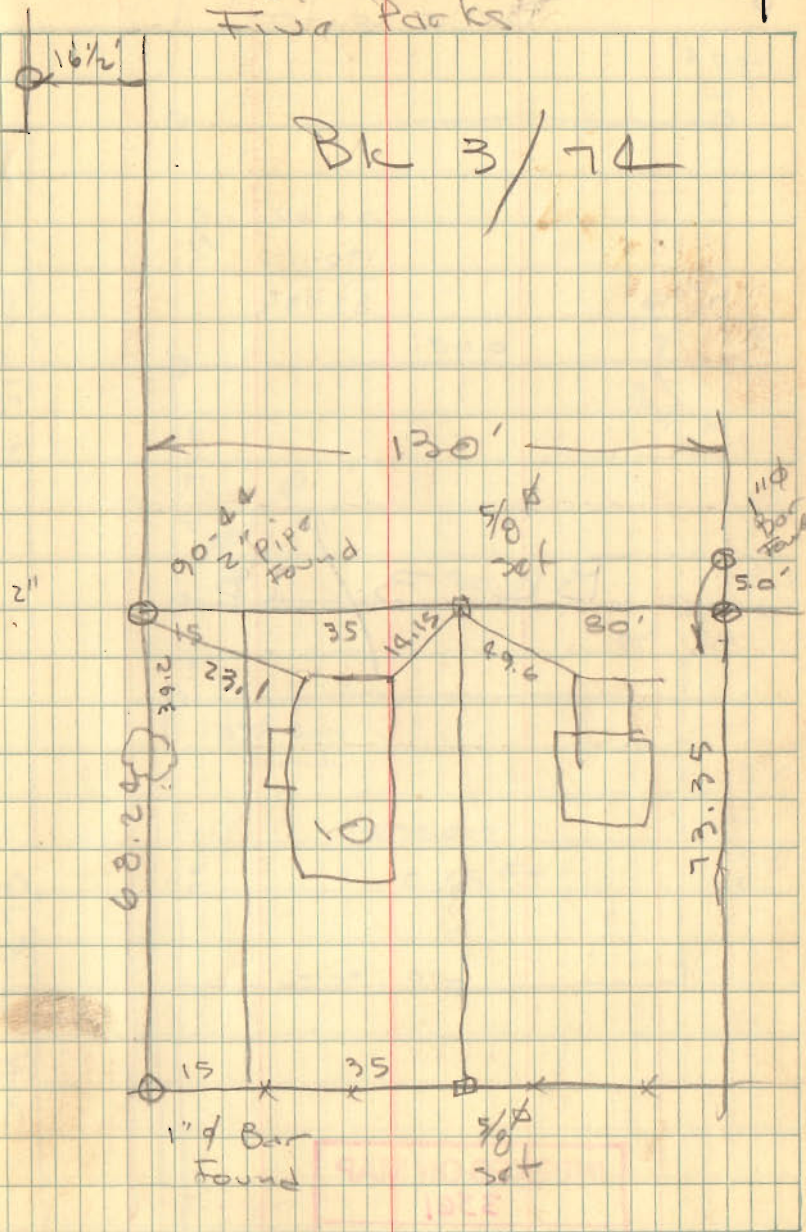
90-47



INDEXED ON MAP  
 57.01

Lot 10 9/24/60  
 Five Parks 7

Blk 3/74



Snyder Survey  
Della Center

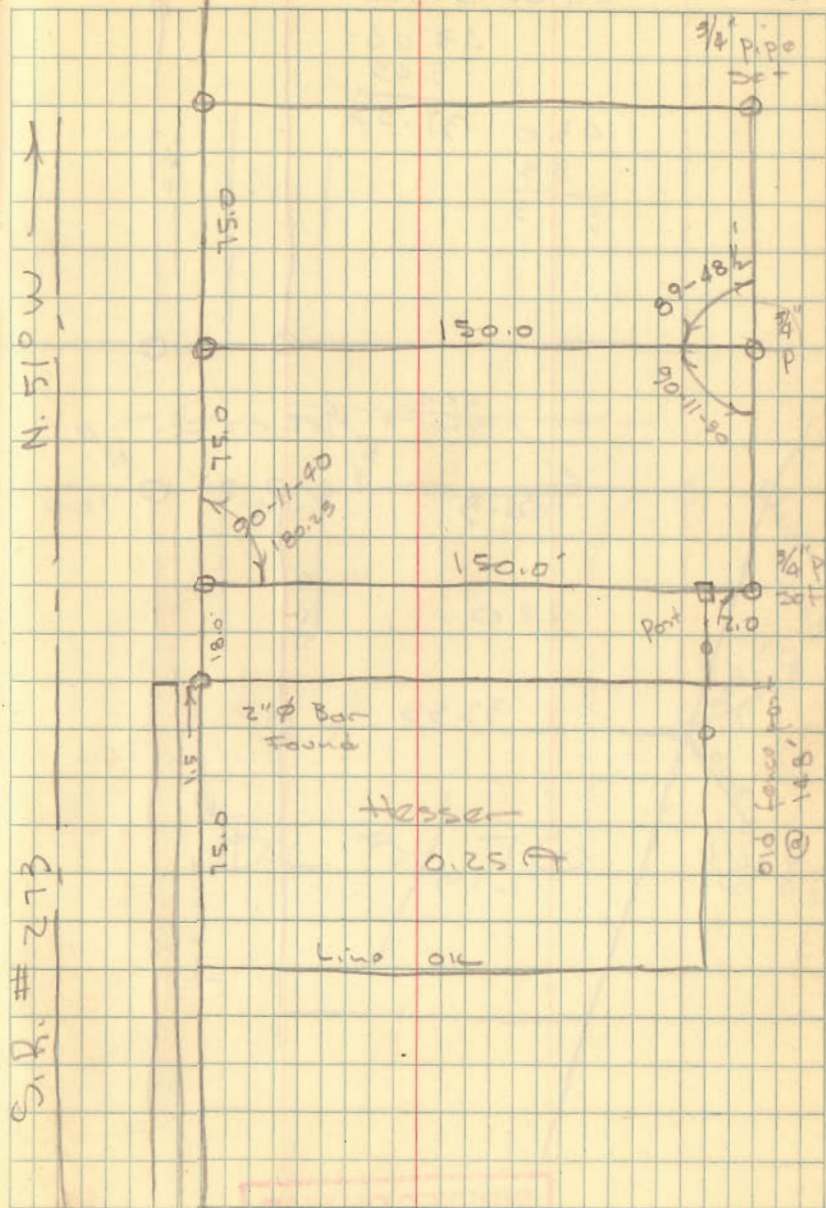
79-60  
90-11 1/2  
89-48 1/2

BK 3/75

INDEXED ON MAP  
3361

10/12/60

8





Lot # 220  
Lake View

43.00  
5.45  

---

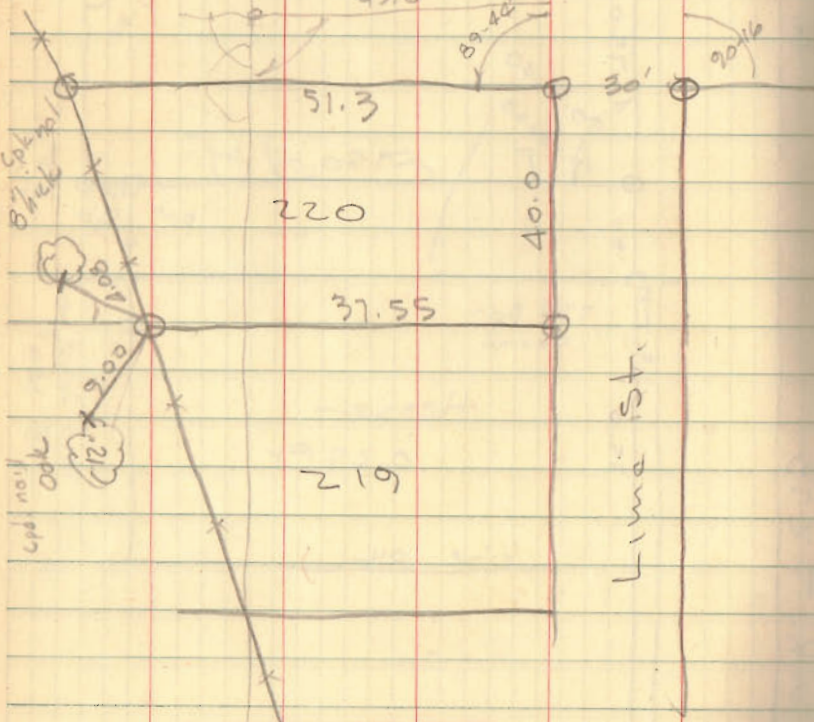
43.0  
8.3  

---

51.3

10/12/00

9

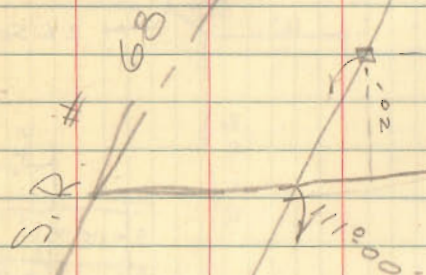
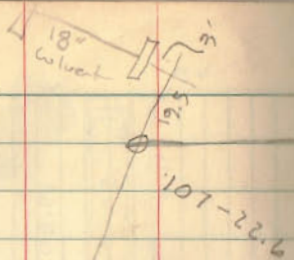


Grove Ave

BL 3/76

INDEXED ON MAP  
8762

01 Hopewell Church



80.20  
58.78

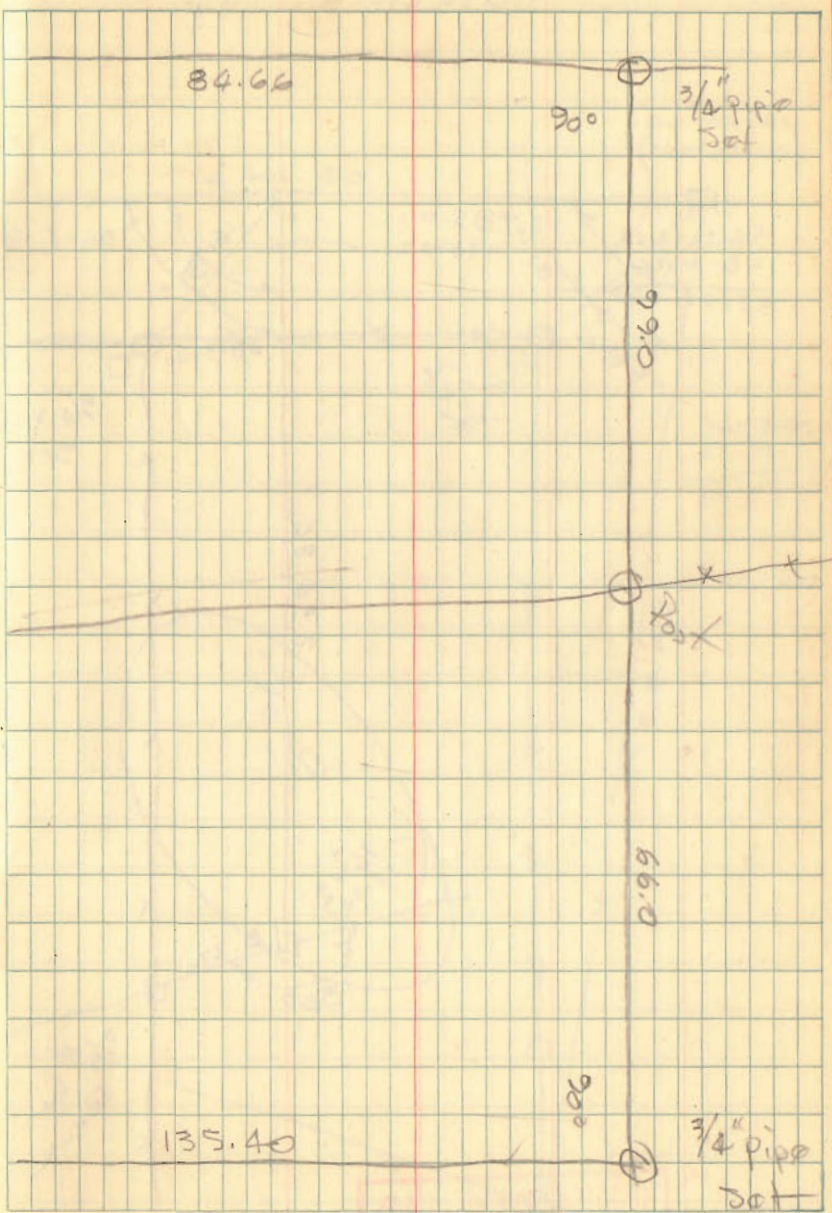
13-37 X

INDEXED ON MAP  
2587

1376  
R/W  
3/4" pipe  
set

Dodson  
Gilbert

11/11/60 11



51

Shick Survey

$$A = 12^{\circ} - 44'$$

$$R/w \quad T = 177.11$$

50.32

12.12

38.20

55-35-40

150.0

179-59-60

111-11-20

89.4

55-35-50

3)

166-47-30

60.6

124-24-10

 $A = R/w \text{ Mon Found} - 12^{\circ} \text{ Broken off}$ 

179-60

55-36

124-24

Z Data

$$A = 12-44$$

$$D = 3^{\circ}-30$$

$$R = 1637.28$$

INDEXED ON MAP

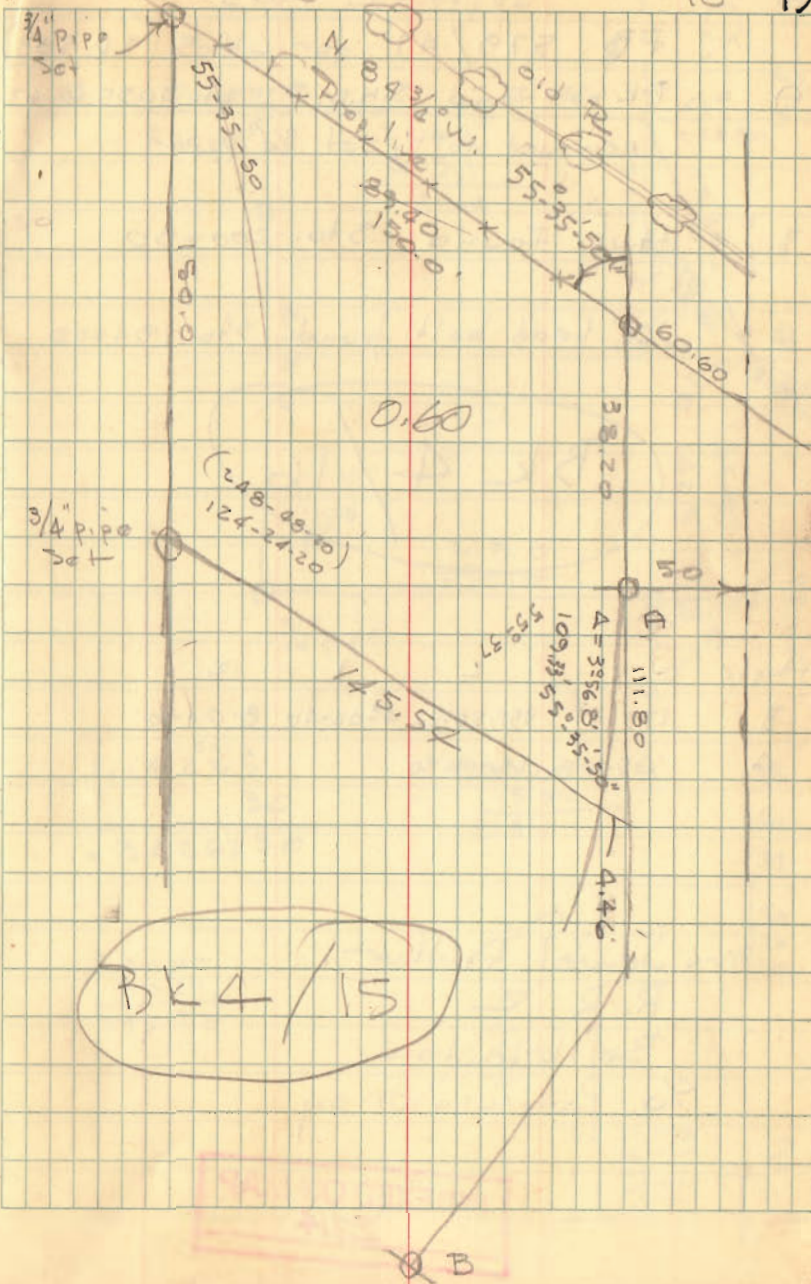
2712

Dodson  
G. Georlie

9-16-61

70°

13



Arthur Survey  
Jefferson Twp

FB 579/47 for C.H.S (S.R. 533)

A = PK nail found - S.H.D. PI sta. 1055+01.62  
removed nail, set 3/4" pipe

B Hub found - Sta. 200+90

C = "O" head bolt found - Sta. 194+00

Bk 4/16

| Angle | 1      | 2         | 1        | 2       |
|-------|--------|-----------|----------|---------|
| B     | 175-57 | 351-55-20 | 42-02-40 | 8-04-30 |
| A     | 65-08  | 130-16-20 |          | 4-02    |

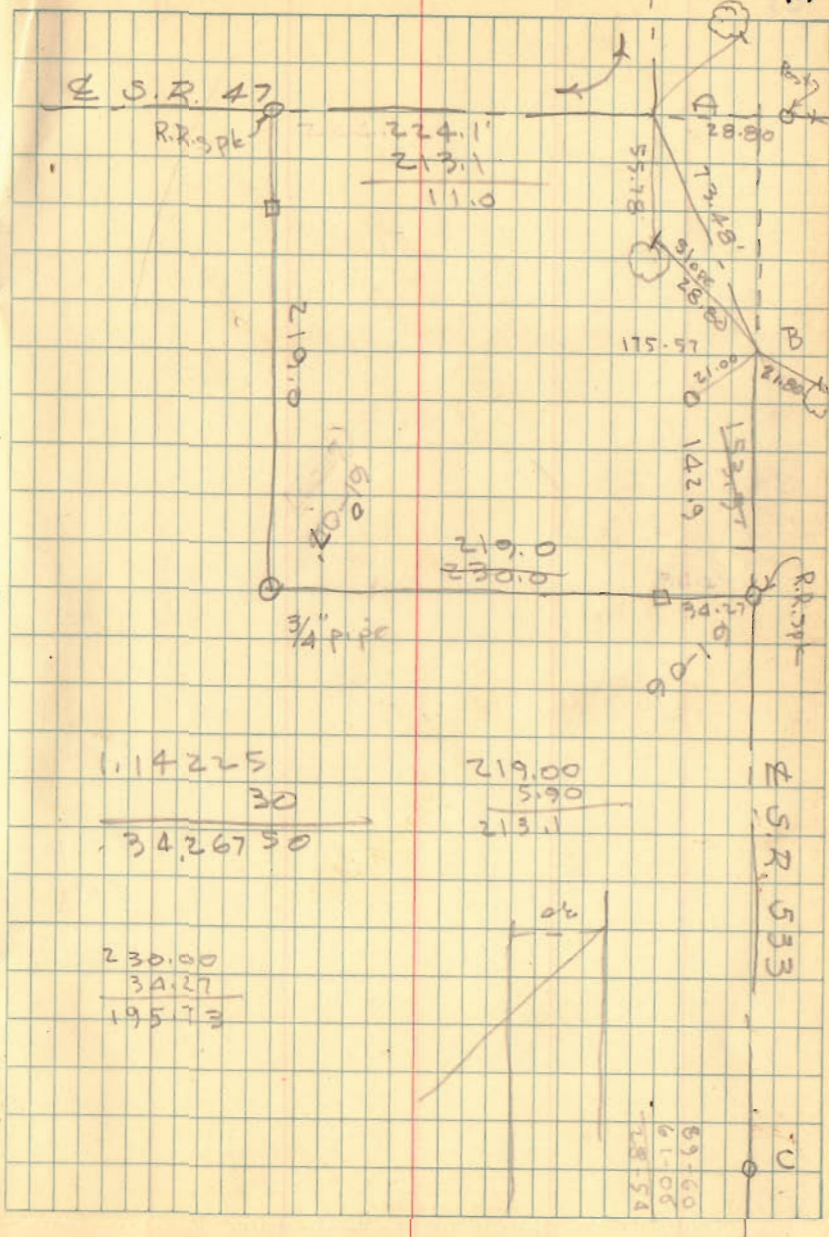
Mrs Jewel Arthur  
R. R. 2  
Bellevue  
% Patricia Gray

INDEXED ON MAP  
2714

Dodson  
G. Goslin

Sept. 23, 1961

14



21

## Starbuck Survey

W. Liberty R.R. #2

Union Twp.

175

225

875

350

350

39,375

90

43,560 / 39,375.00

39,204.0

17,100

$$\frac{39,672.4}{43,560} = 0.91 \text{ A}$$

INDEXED ON MAP  
3219

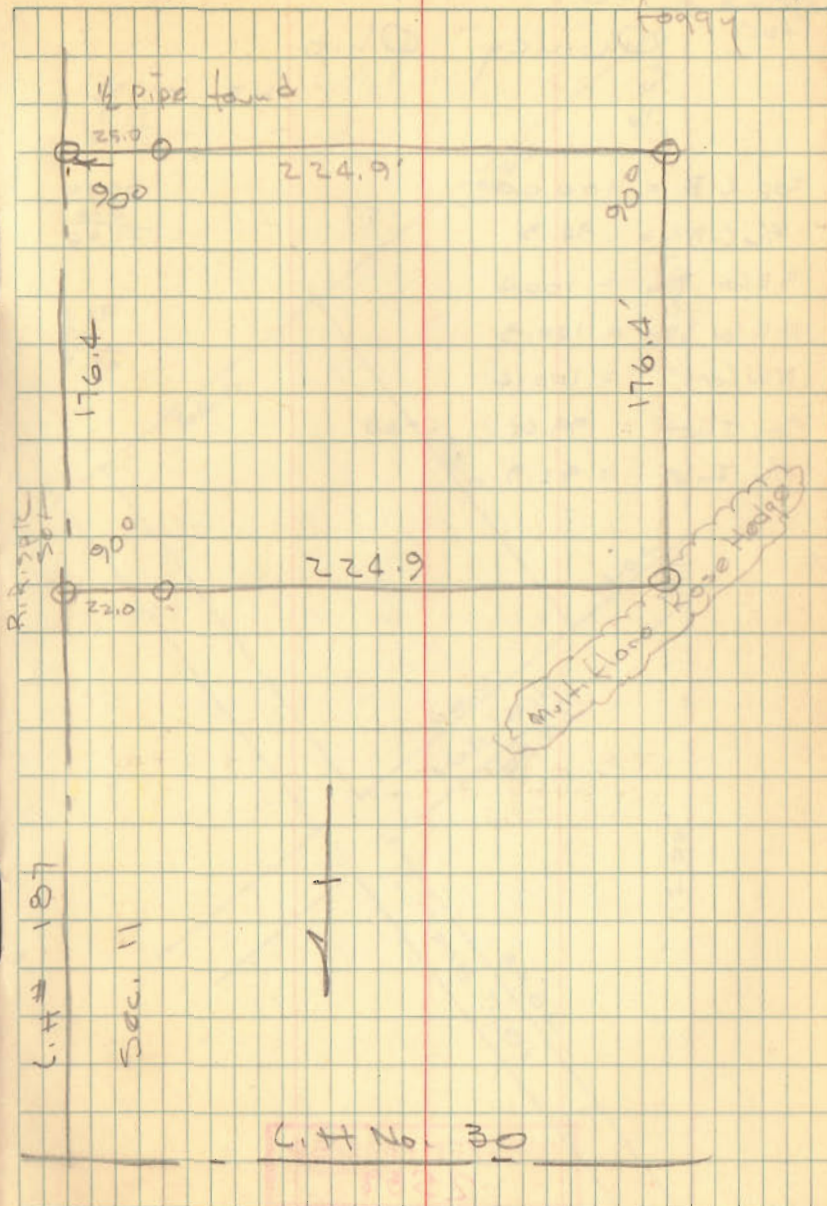
Dodson  
Coastline

11/19/60

40°

16

f9999



Lot # 49  
Quincy Ohio

HI 109.52  
5.19  
0.39

Top C.B. = 100.00

109.52

F/L C.B. = 94.3

-5.7

6.00

S.E. Cor Bldg. = 100.4

99.46

N.E. Cor Bldg. = 100.3

99.1

N.W. Cor " = 100.4

6.5

Top Inlet = 99.46

-6.5

92.9

F/L Inlet = 92.9

INDEXED ON MAP

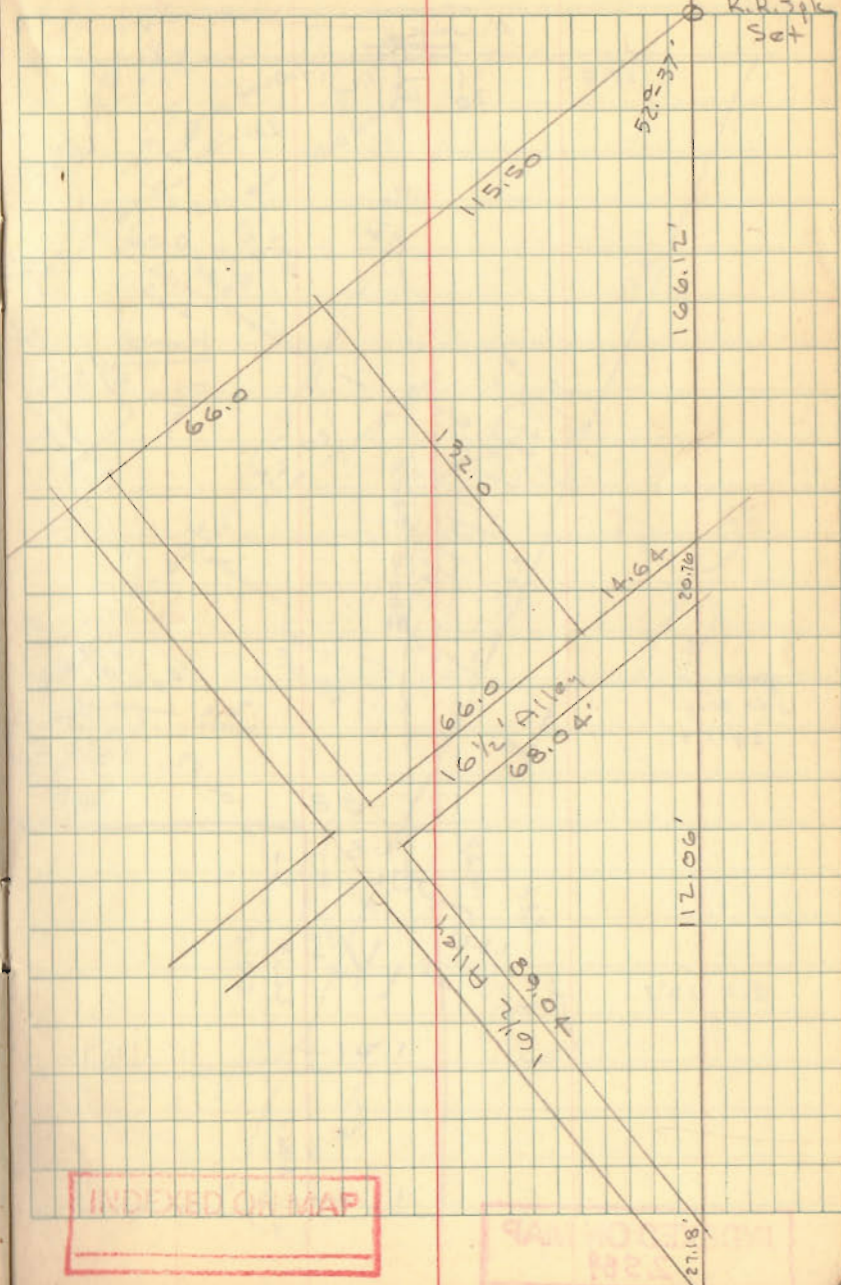
2589

Dodson  
Gilbert

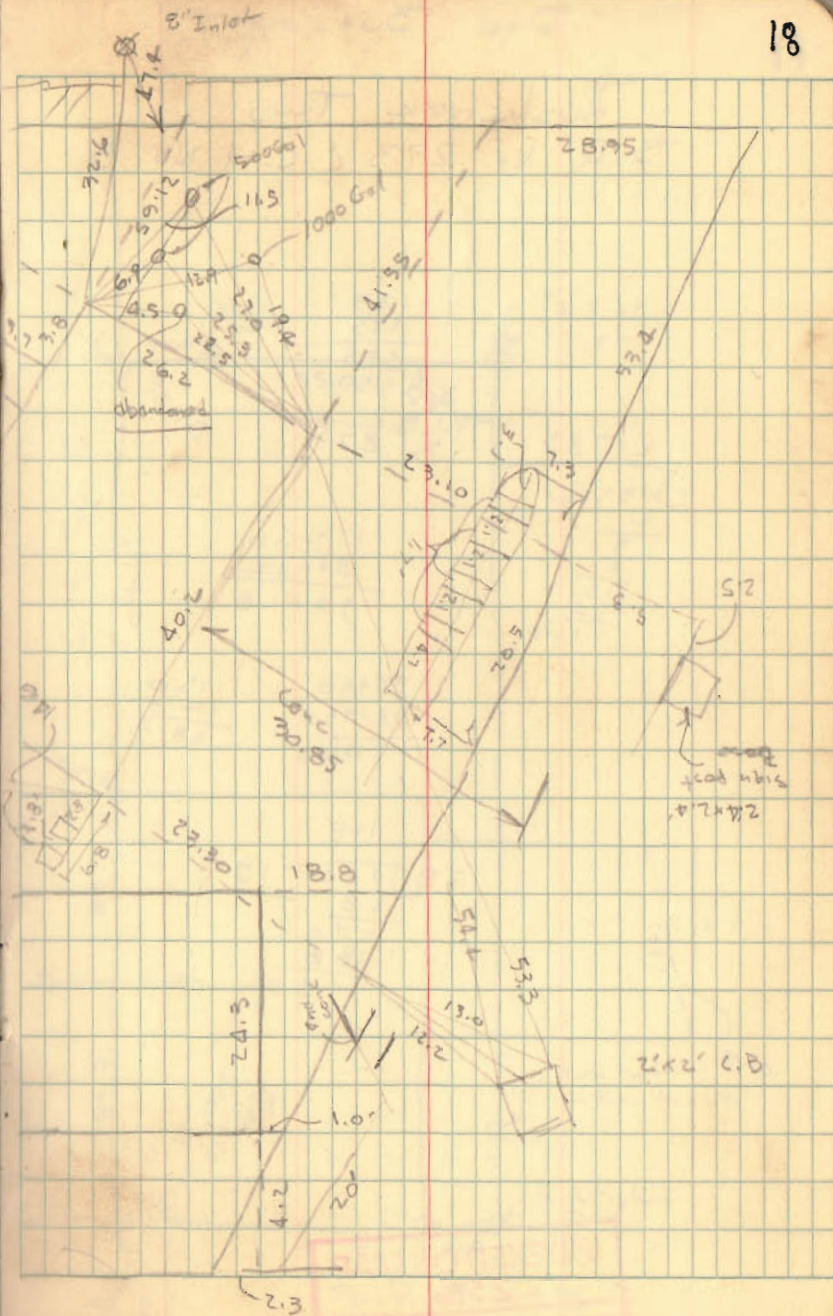
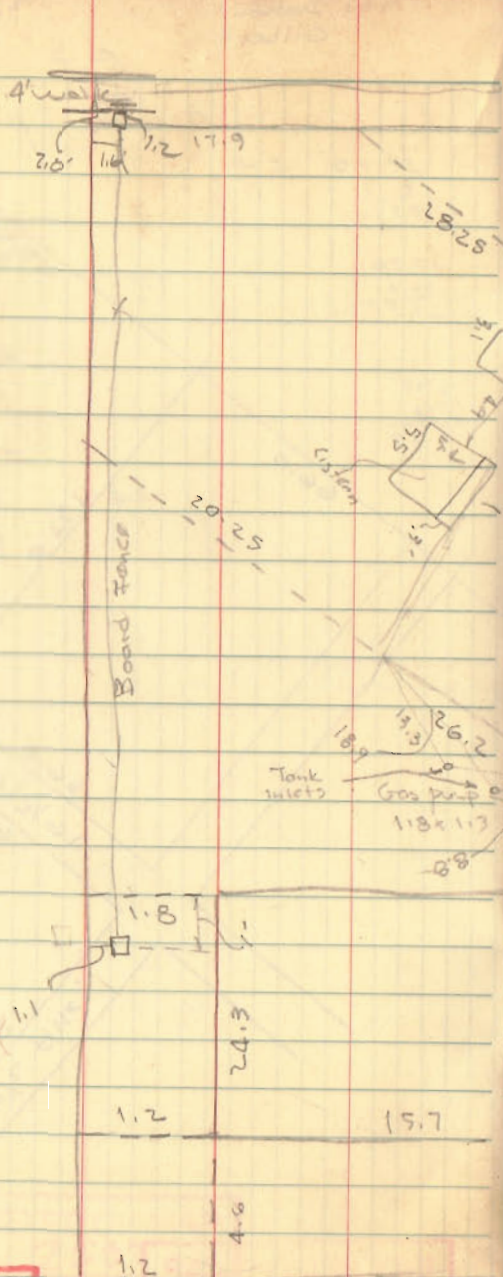
2/22/61  
Rain

17

R.R. 7th  
Set



INDEXED ON MAP



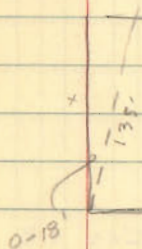
Dye Survey

Rushcreek Twp  
S.R. No. 273 & C.H. No. 5
$$\begin{array}{r} 125 \\ 175 \\ \hline 625 \\ 875 \\ \hline 125 \\ \hline 21,875 \end{array}$$

$$\begin{array}{r} 21785 \\ 2 \overline{) 43560} \\ \underline{4} \\ 3 \\ \underline{2} \\ 15 \\ \underline{14} \\ 170 \end{array}$$

$$\begin{array}{r} 179-60 \\ 89-47 \\ \hline 90-18 \end{array}$$

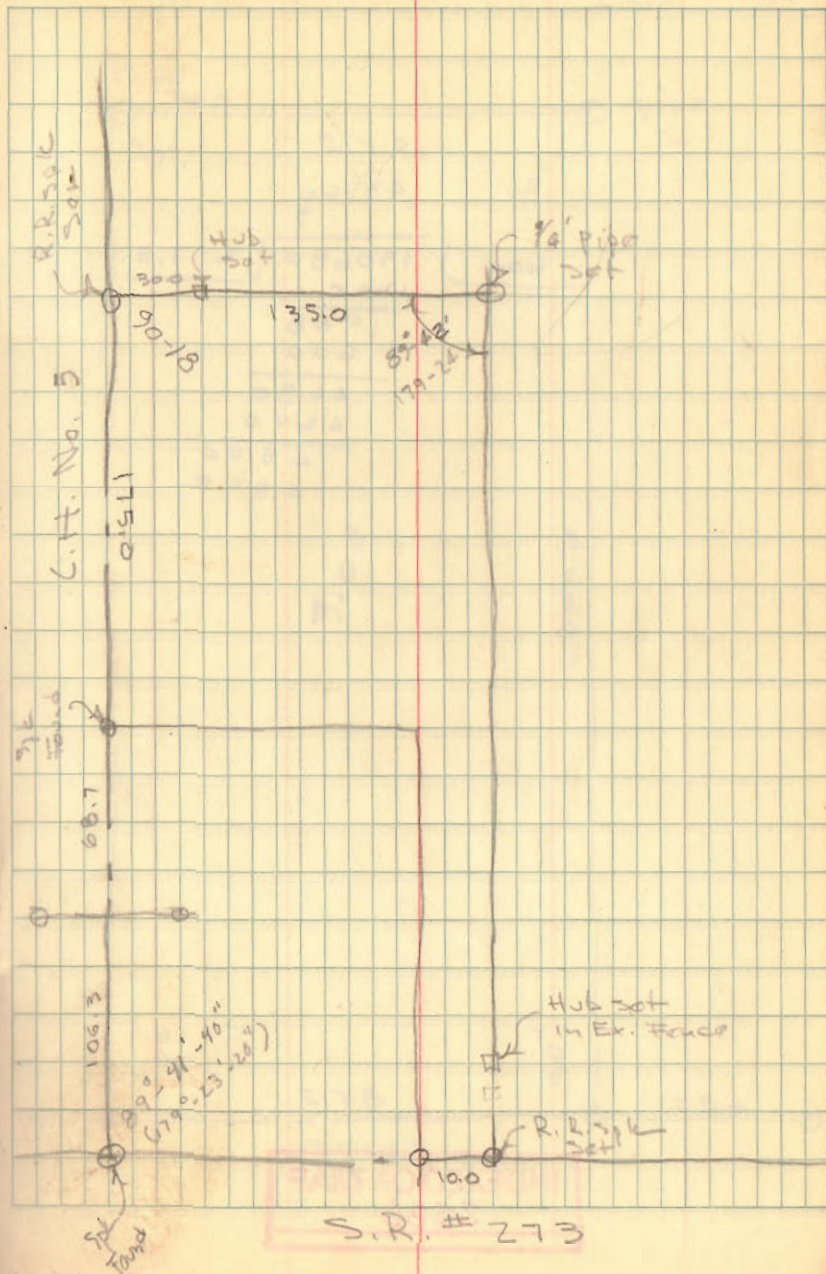
$$\begin{array}{r} 35400 \\ 33493.7 \\ \hline 106.3 \end{array} \quad \begin{array}{r} 175.0 \\ 106.3 \\ \hline 68.7 \end{array}$$

$$\begin{array}{r} 100 \\ 28 \overline{) 480} \quad 17 \frac{1}{2} \\ \underline{28} \\ 200 \\ \underline{186} \\ 140 \end{array}$$


INDEXED ON MAP  
2586

Dodson  
Gilbat

3-11-61





PI  
Dye Survey

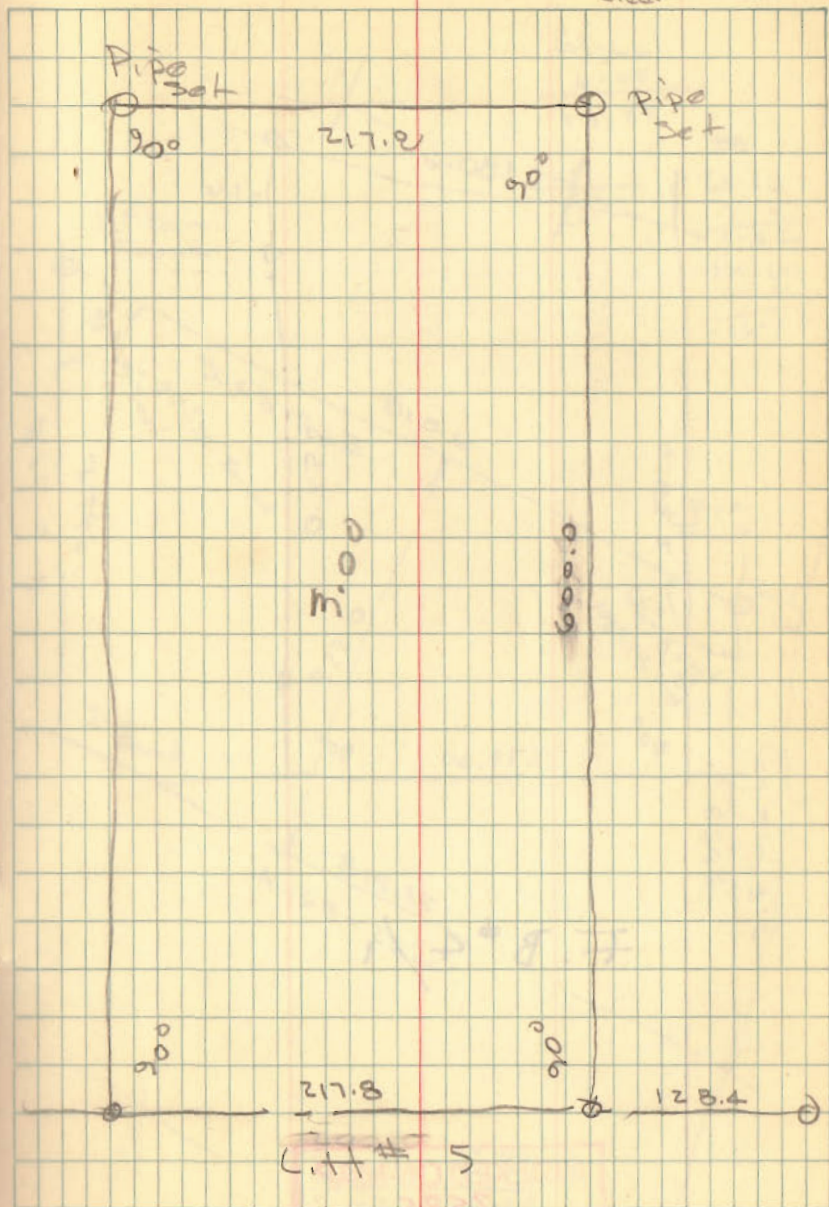
$$\begin{array}{r} 43560 \\ \phantom{0}3 \\ \hline 600 \overline{) 130680} \phantom{0} 217.8 \\ \underline{1200} \\ 1068 \\ \underline{600} \\ 4680 \\ \underline{4200} \\ 4800 \\ \underline{4800} \\ 0 \end{array}$$

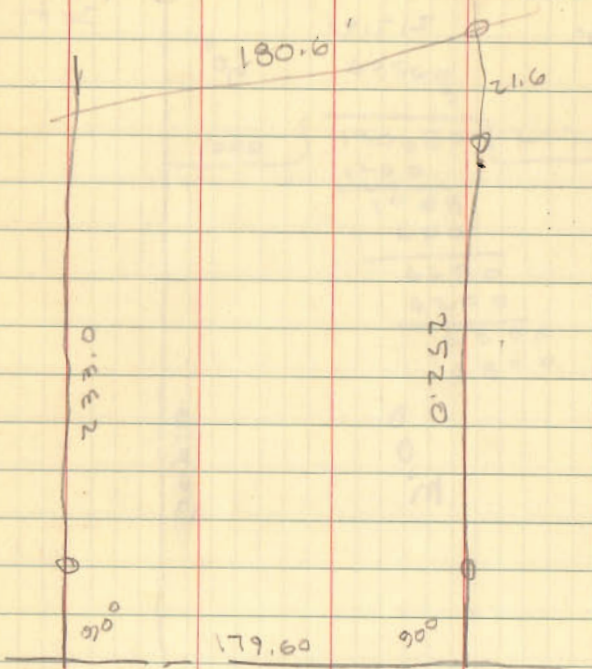
INDEXED ON MAP  
2586

Dodson  
Geoslin

3-25-61  
65°  
Clear

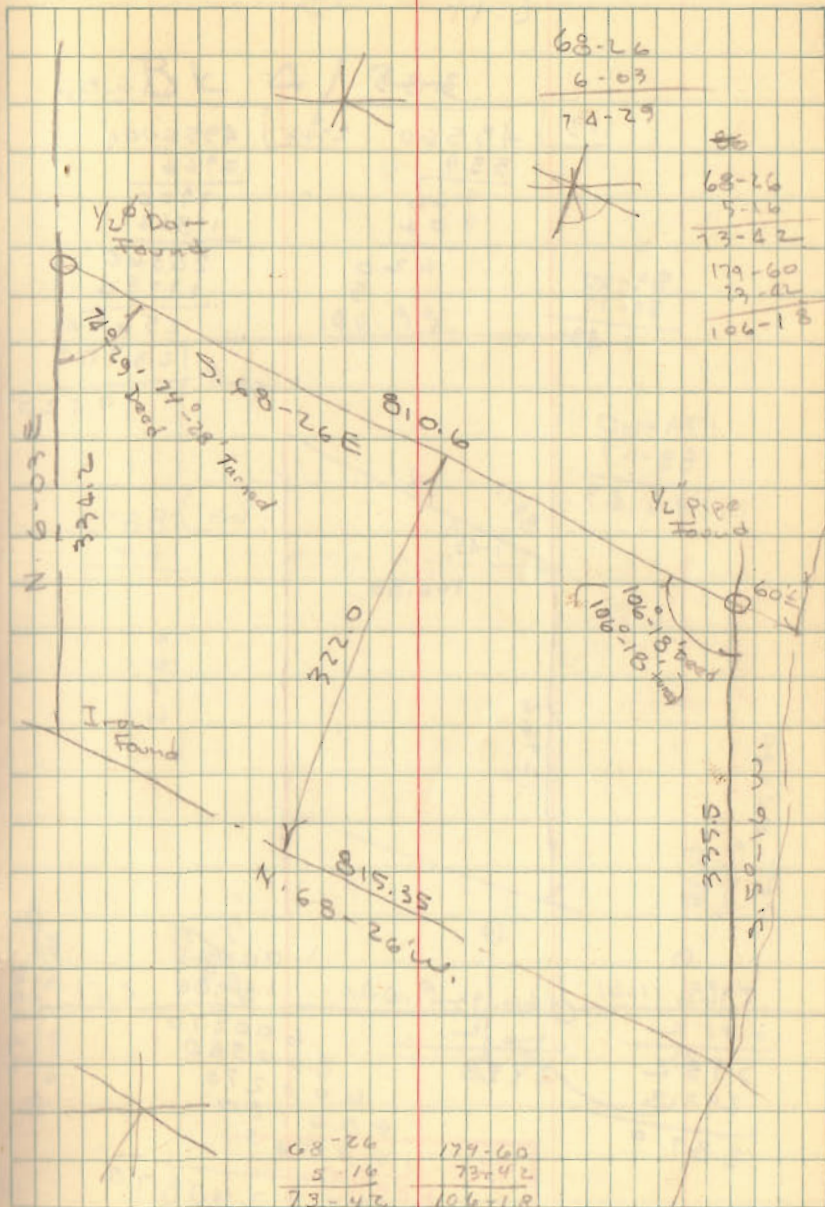
20





F.B # 4 / 1

INDEXED ON MAP  
2585



Kennet Stump  
C.H. # 35

385

146.86

|     |       |      |         |
|-----|-------|------|---------|
| 113 | 43560 | 2966 | 4356001 |
|     | 339   |      | 2966    |
|     | 966   |      | 13900   |
|     | 904   |      | 11864   |

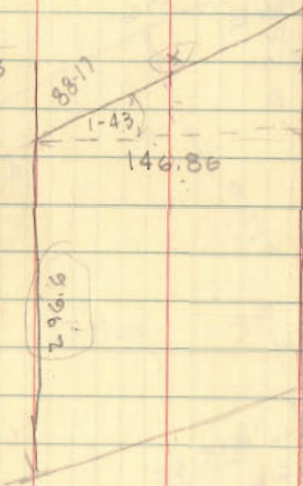
89-60  
88-17  
1-43

620  
5

20360  
17796  
25640  
23728

19120

179-60  
88-17  
9143



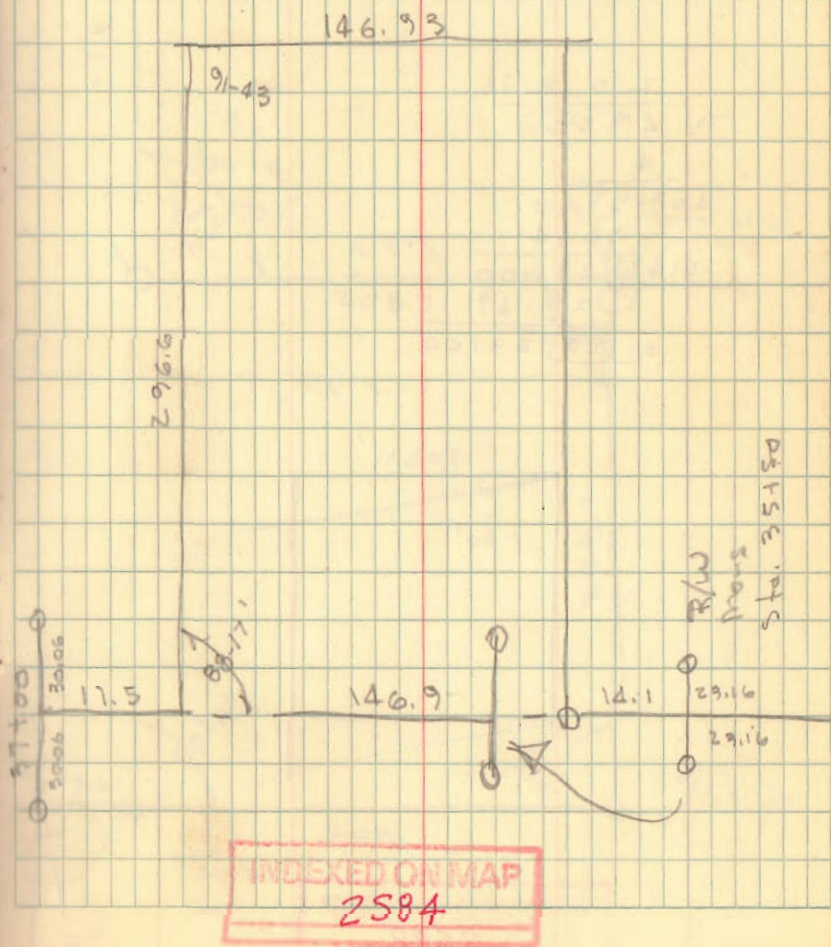
66) 887  
66

|       |       |               |
|-------|-------|---------------|
| 2966  | 46.93 | 1.00045       |
|       |       | 146.86        |
| 5932  | 2938  | 600270        |
| 293.8 |       | 800360        |
| 887.0 |       | 600270        |
|       |       | 40080         |
|       |       | 102245        |
|       |       | 146.9 26087.0 |

3-25-61

22

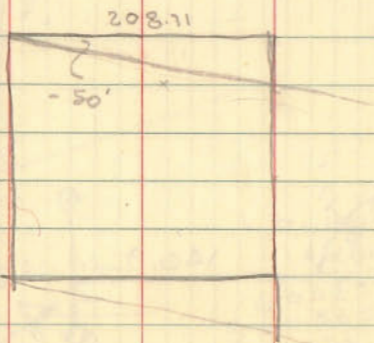
Bk 4/2



INDEXED ON MAP  
2584

# Roach Survey

$$\begin{array}{r} 208.71 \\ \sqrt{43960} \\ \underline{4} \\ 408 \mid 3500 \\ \underline{3264} \\ 4167 \mid 29600 \\ \underline{29169} \\ 41740 \mid 43100 \end{array}$$



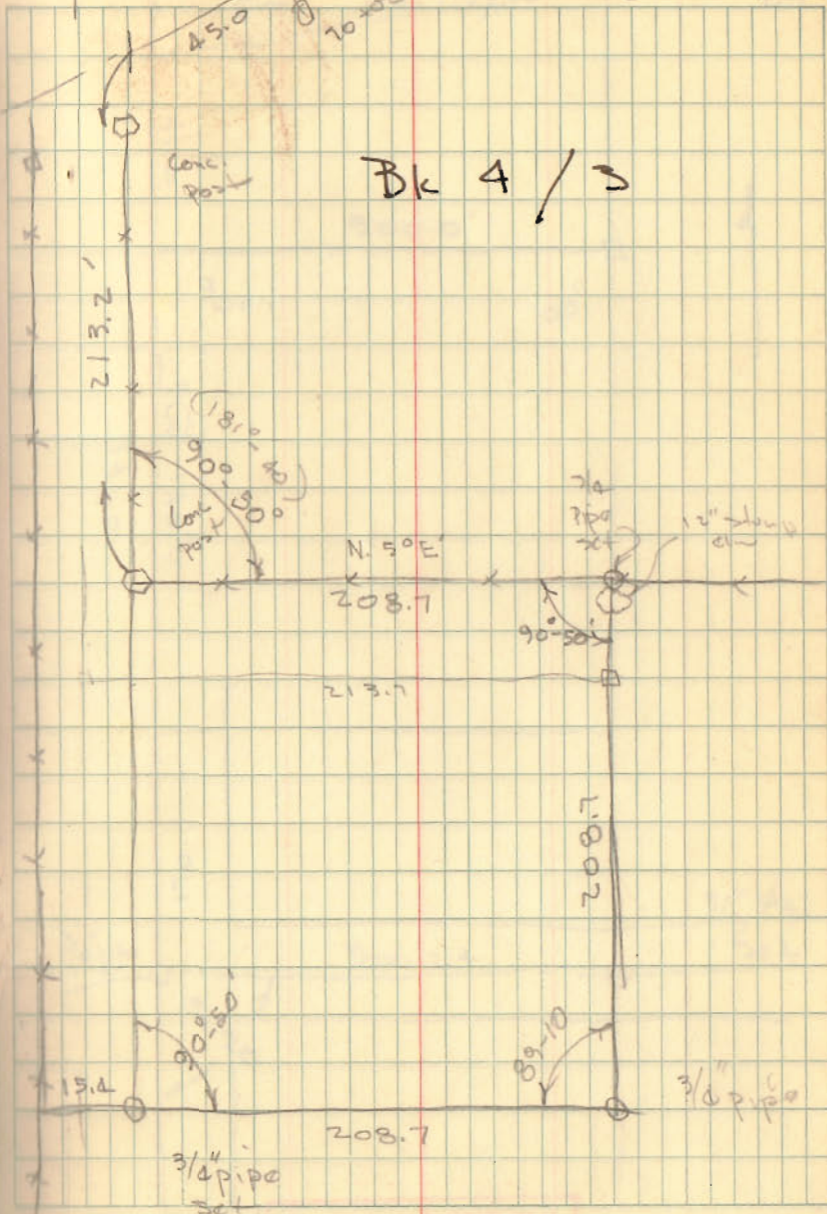
INDEXED ON MAP  
2588

Dodson  
 Gilbert  
 12.9  
 24.9  
 76x202  
 45.0

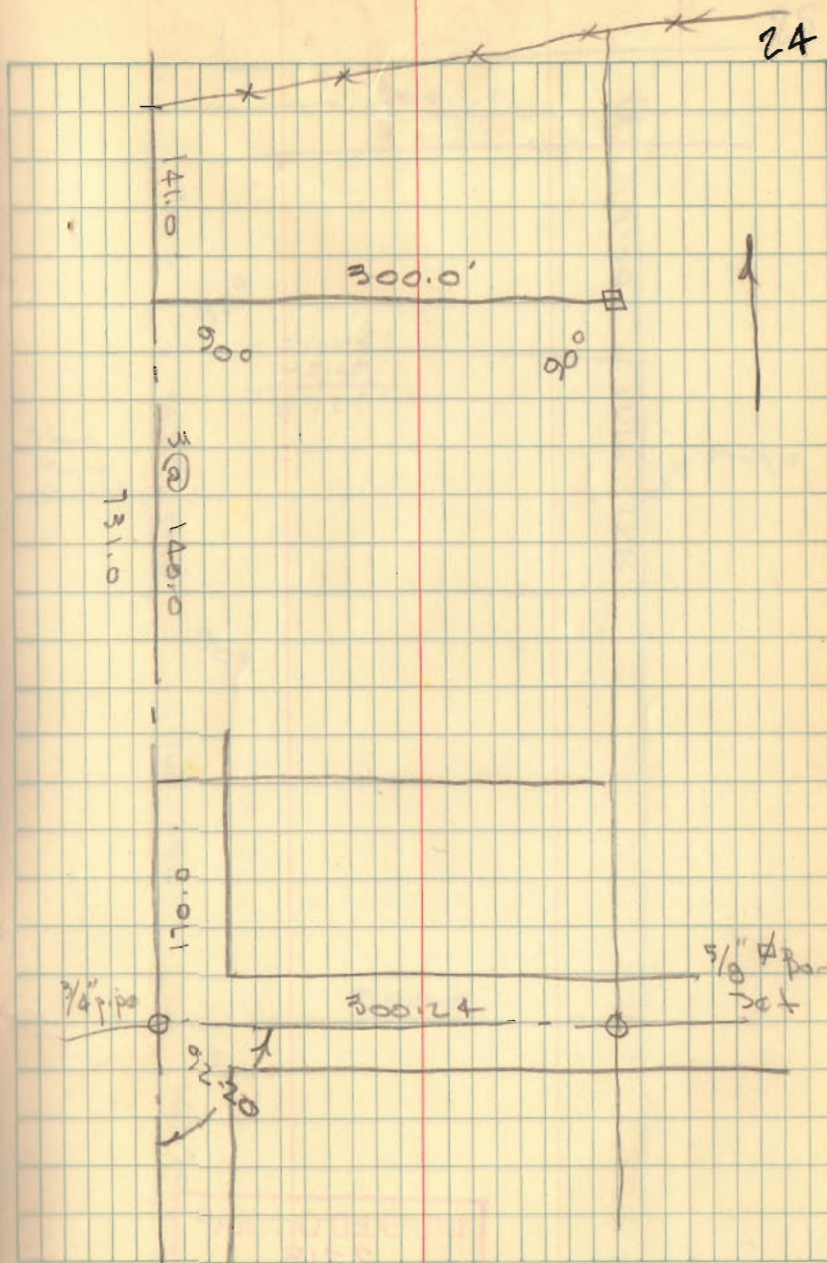
4-1-61  
windy  
cold

23

Bk 4 / 3



Le Van Survey  
Jefferson Twp



INDEXED ON MAP

2713

150.00  
96.82  

---

53.18

INDEXED ON MAP  
2713

