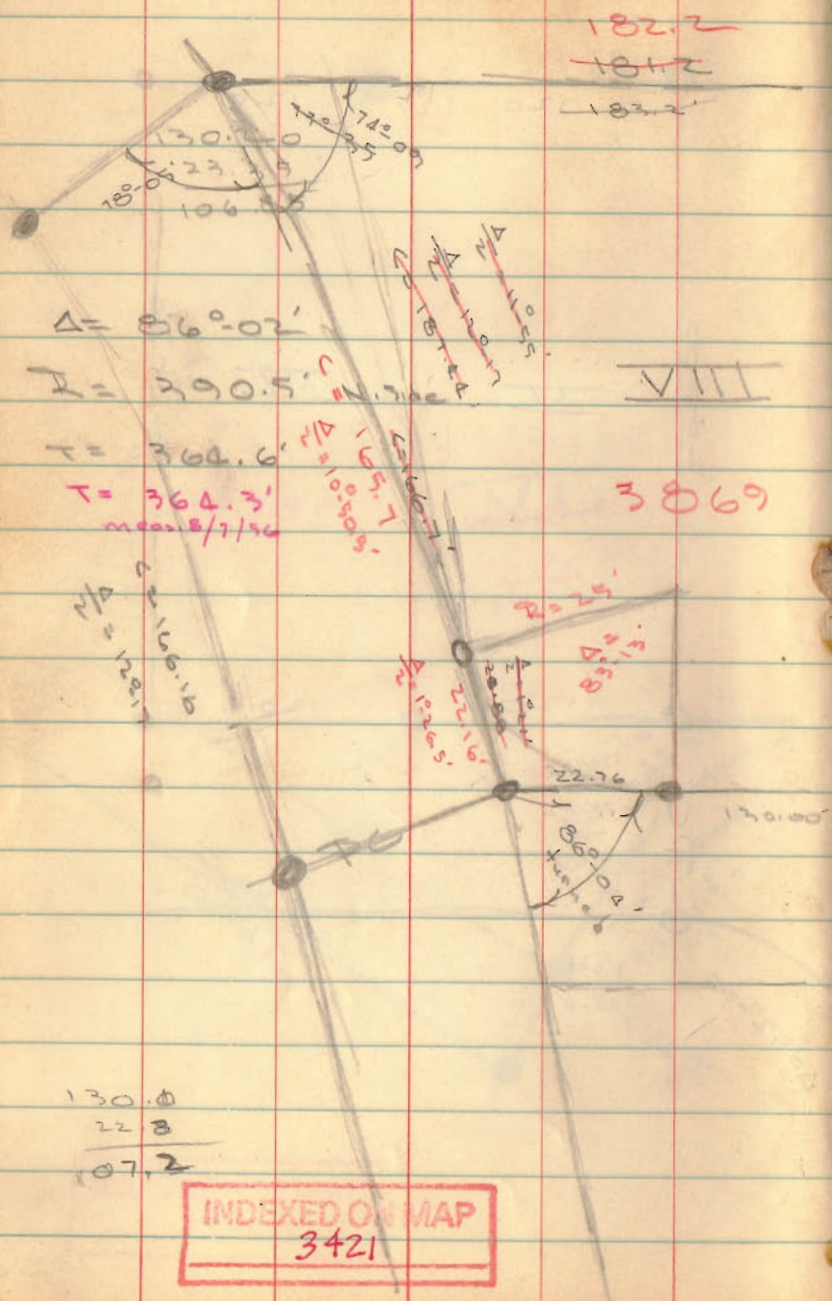


INDEXED ON MAP
3421



$\Delta = 86^{\circ}02'$
 $I = 290.5'$
 $T = 364.6'$
 $T = 364.3'$
 mean 8/7/56

1822
~~1812~~
 1822

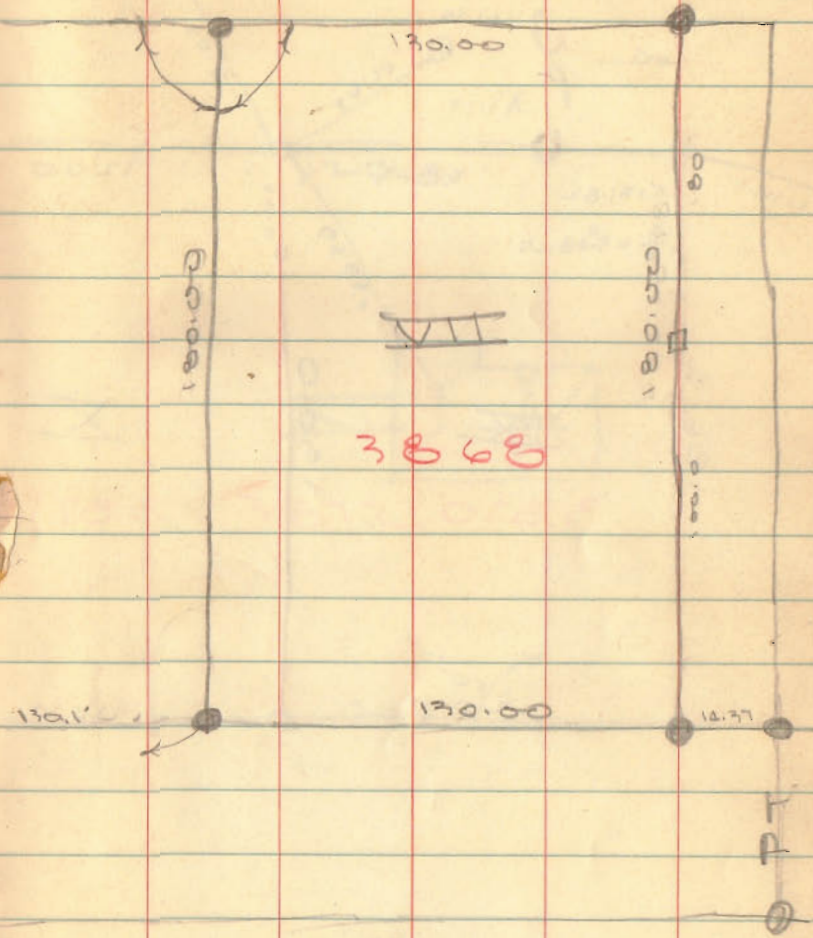
VIII

3869

$M/\Delta = 12.21$
 22.16×1.16

130.0
 22.8
 107.2

INDEXED ON MAP
 3421



179-60
 86-00
 93-56
 12-17
 106-13

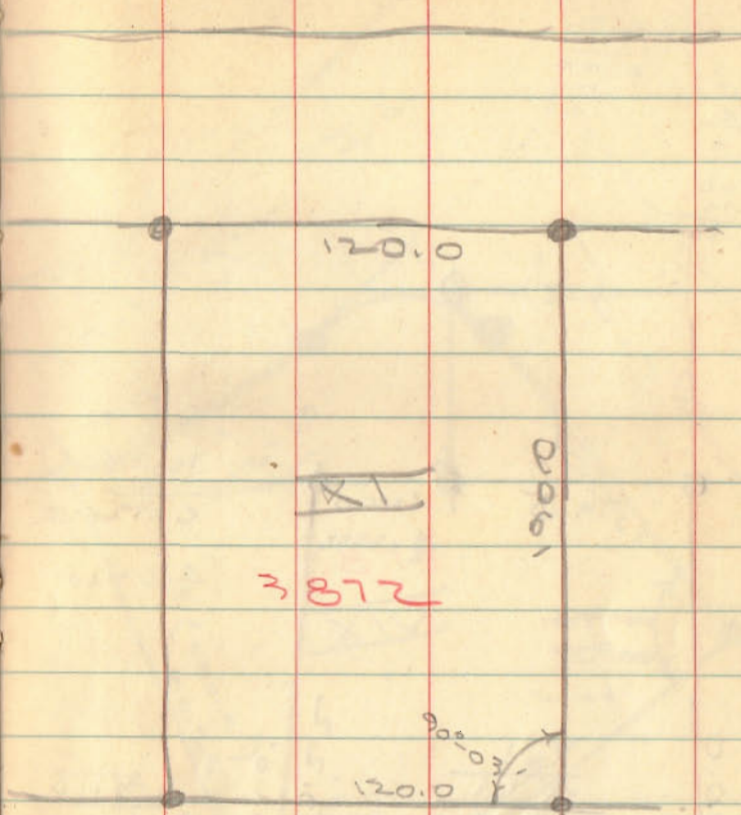
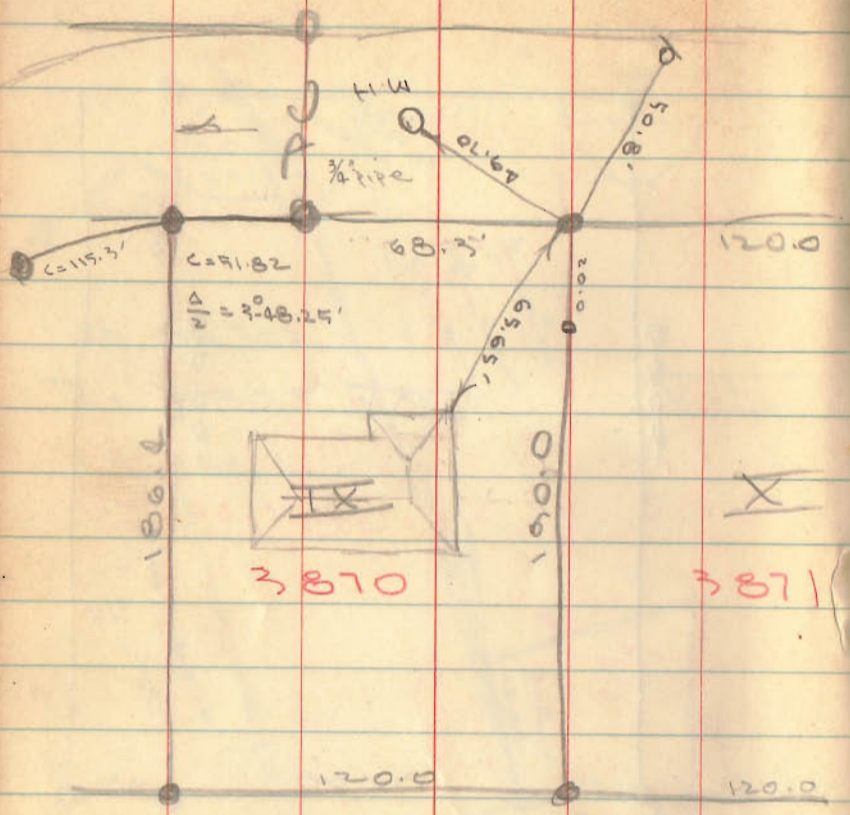
179-60
 106-13
 73-47

93-56
 12-09
 168-05

179-60
 168-05
 11-55

22-34
 89-60
 12-17
 77-43
 89-60
 11-55
 78-05

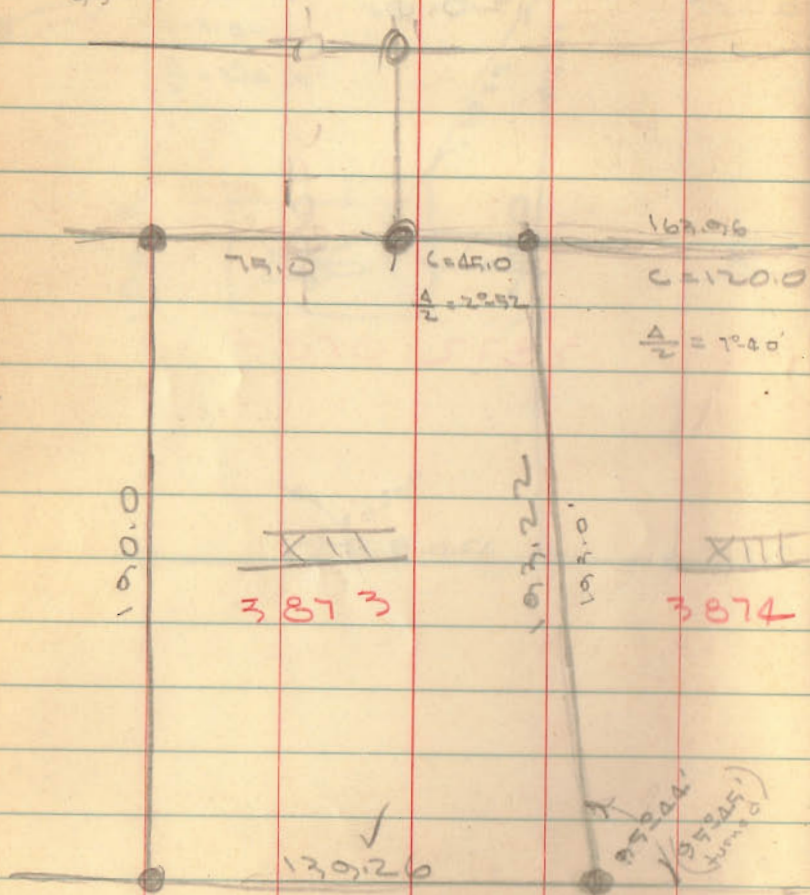




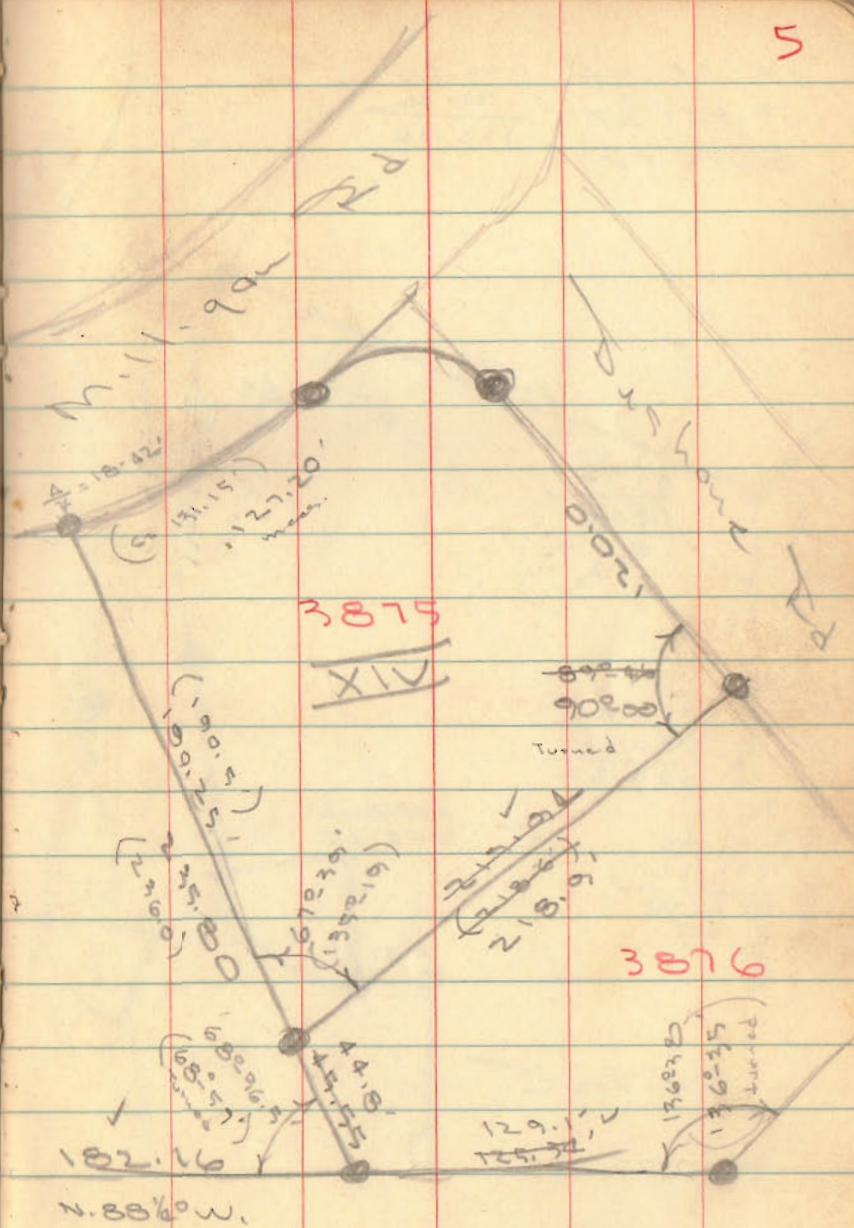
INDEXED ON MAP
3421

89-60
 5-22
 82-16
 179-60
 82-19
 95-42

2.52
 109
 800
 29



INDEXED ON MAP
 3421



275.80
 45.55
 190.25

179-60
 54-44

 125-16

89 60
 11 19

 78 41

102°44
 136 38

 239 22

359 60
 239 22

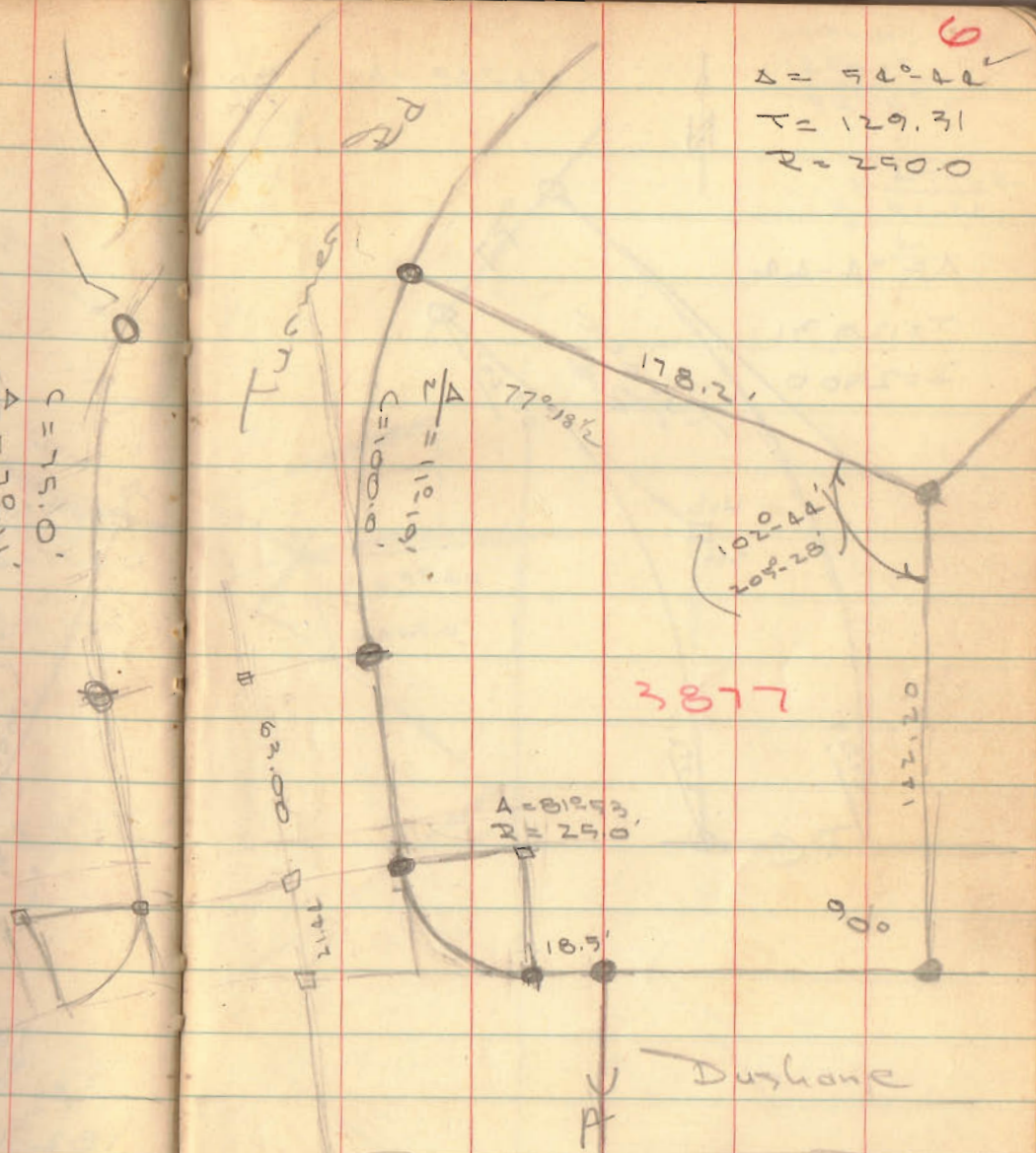
 120 38

$\frac{1}{2} \Delta = 75.0'$
 $\frac{1}{2} \Delta = 72.1'$

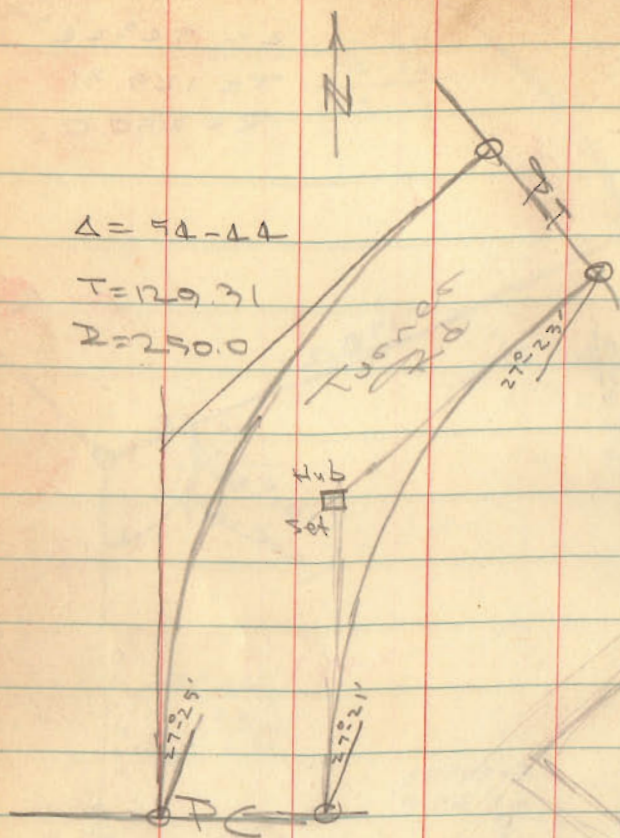


6

$\Delta = 54^\circ 44'$
 $T = 129.31$
 $R = 250.0$



INDEXED ON MAP
 3421



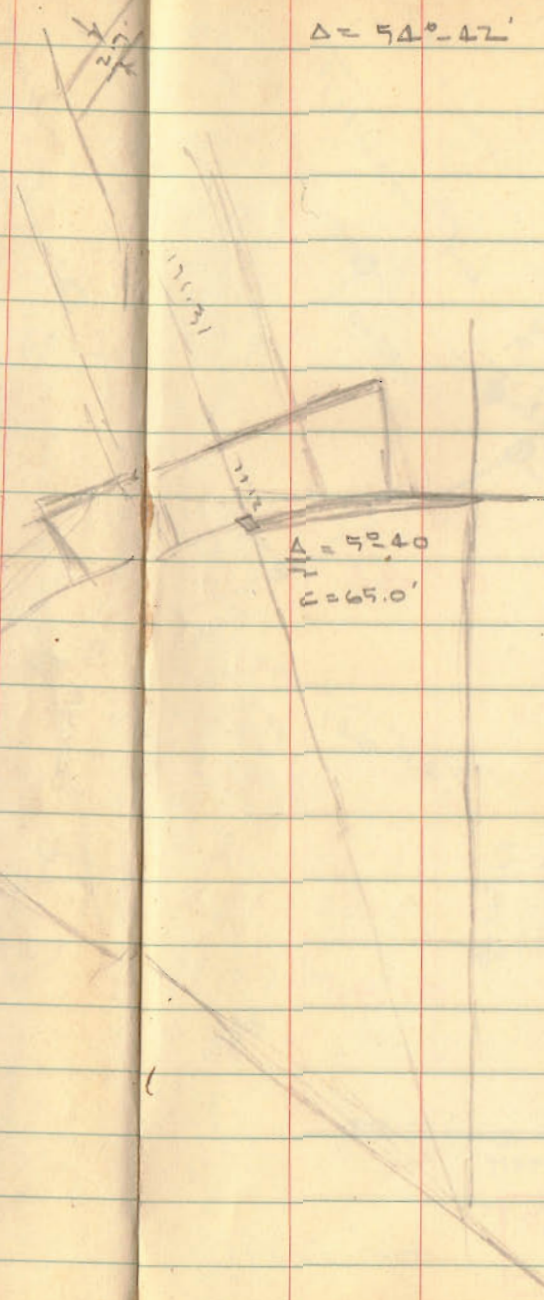
INDEXED ON MAP
3421

$\Delta = 54^{\circ}-42'$

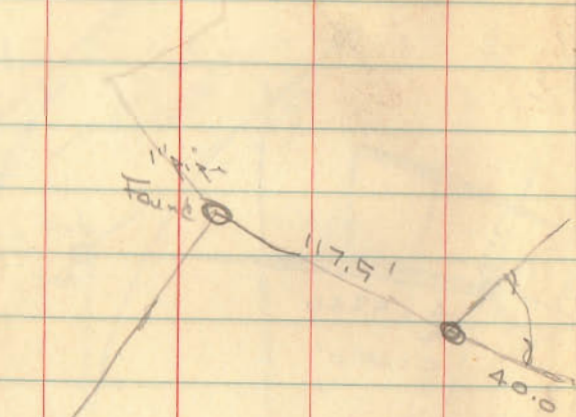
$179-60$
 $125-15$
 $\hline 54-45$

7

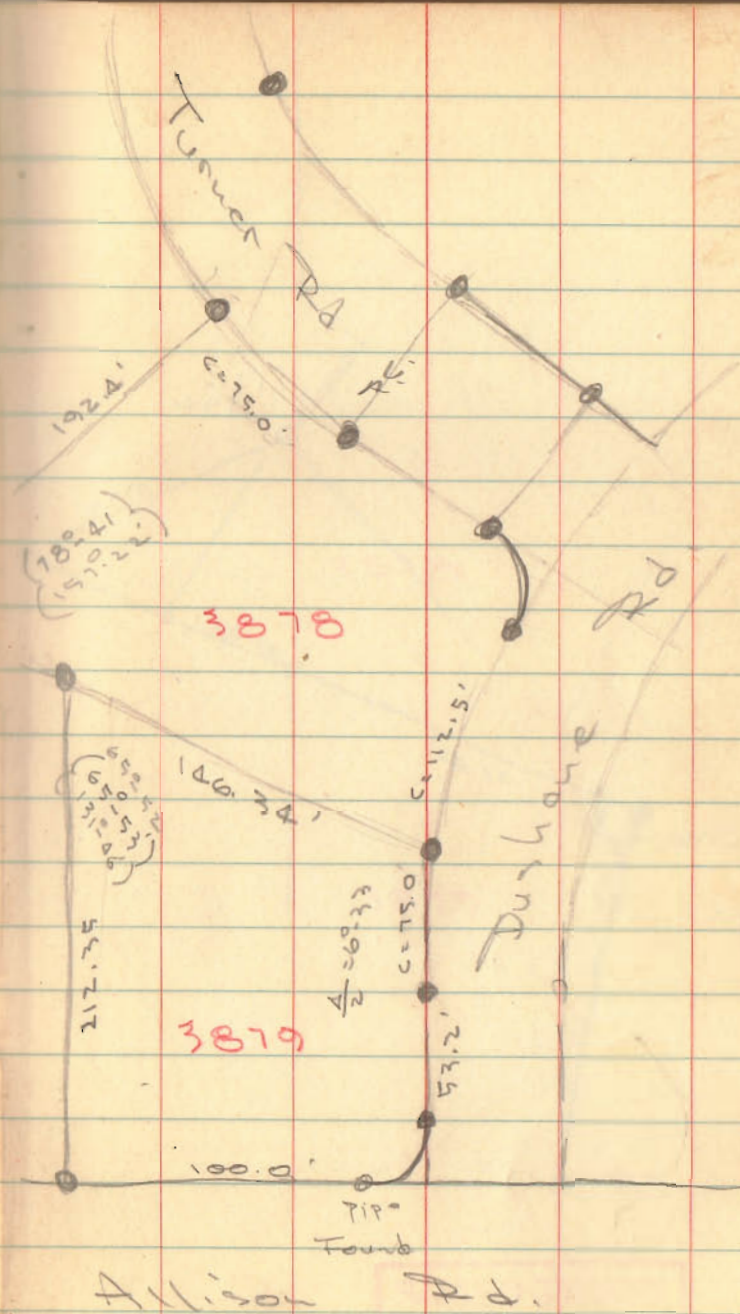
$27-22$
 $\hline 54-44$
 \hline
 $.10$

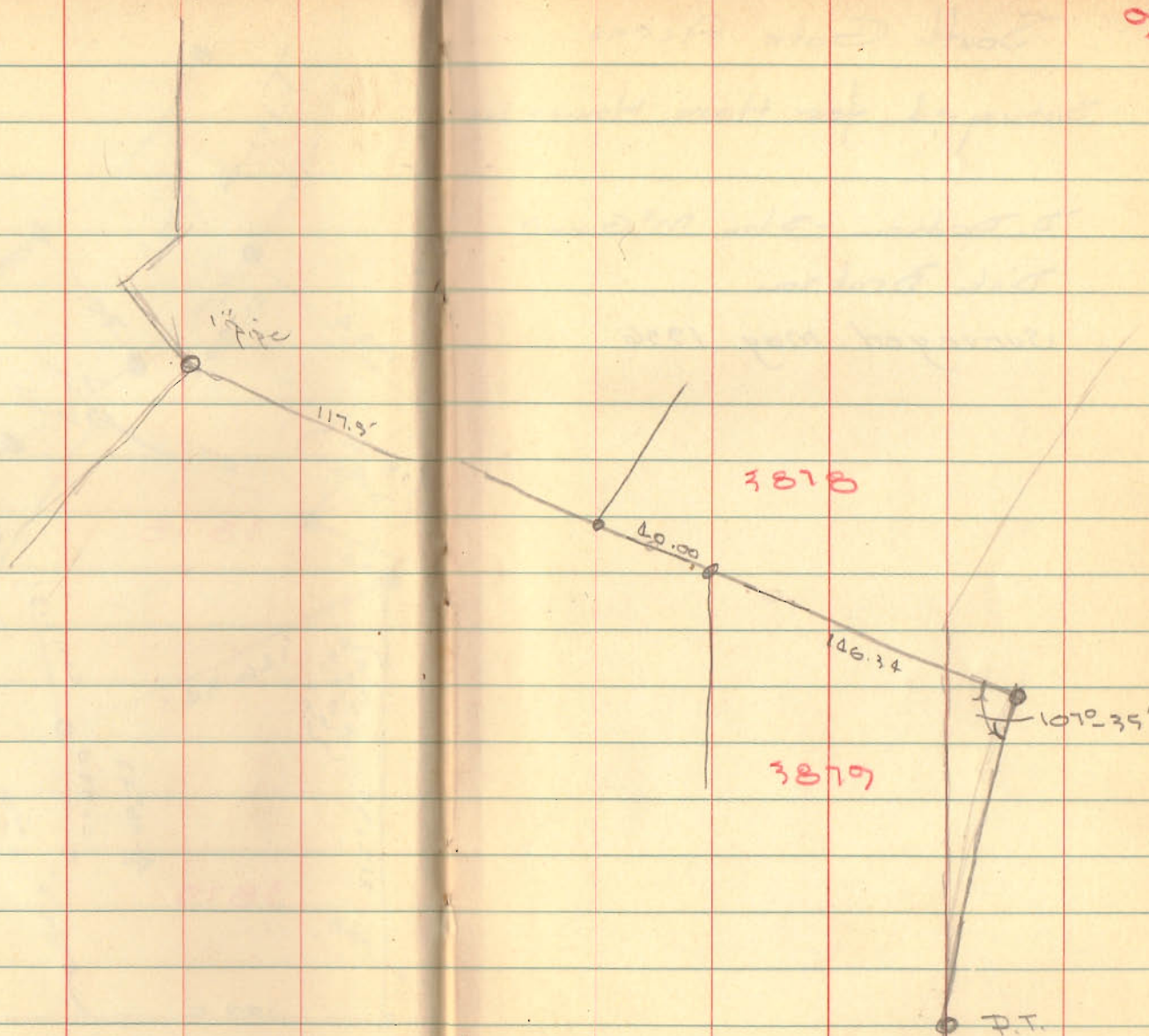


108.10
 149.15 T
257.25



INDEXED ON MAP
 3421





INDEXED ON MAP

3421

South Gate Acres

Surveyed for Hase Homes Inc

D. Dodson - Stan McGinnis

Dick Dodson

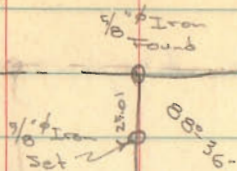
Surveyed May 1956

10

INDEXED ON MAP

9619

Sta. 63+75



800.5'

INDEXED ON MAP

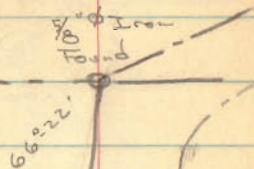
9619

Post

912.38
(822-17)

Sta. 73+84.5

1009.3'



See Co. Engineers
F.B# 513 & 51-54
for Survey of C.H. 199

747.2'

base line

center line

McKees Creek

1152.24'

44.0'

66.38'

21.59'

3/8" Pipe Found

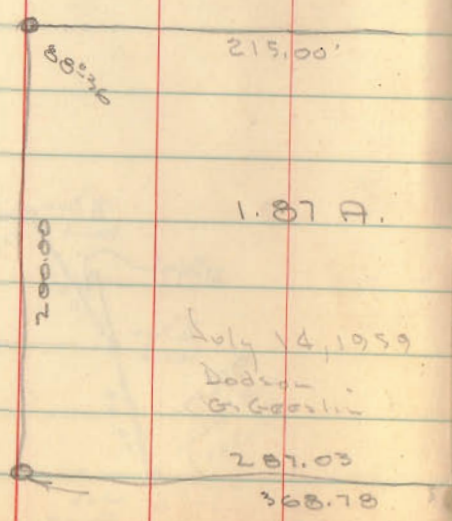
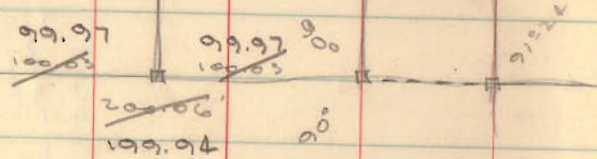
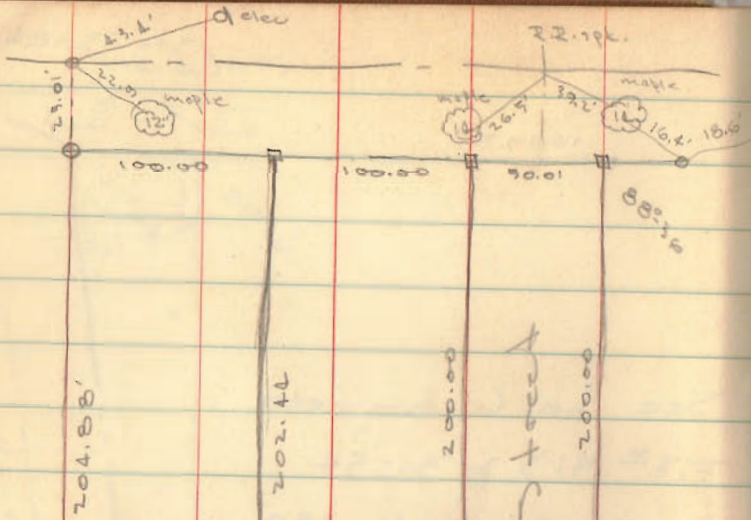
108.11'

79.65'

1/4" Pipe Found

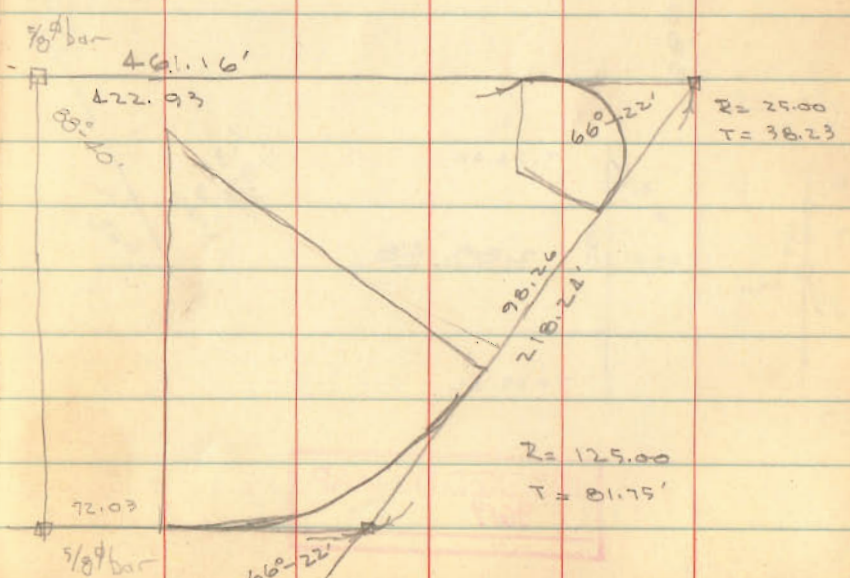
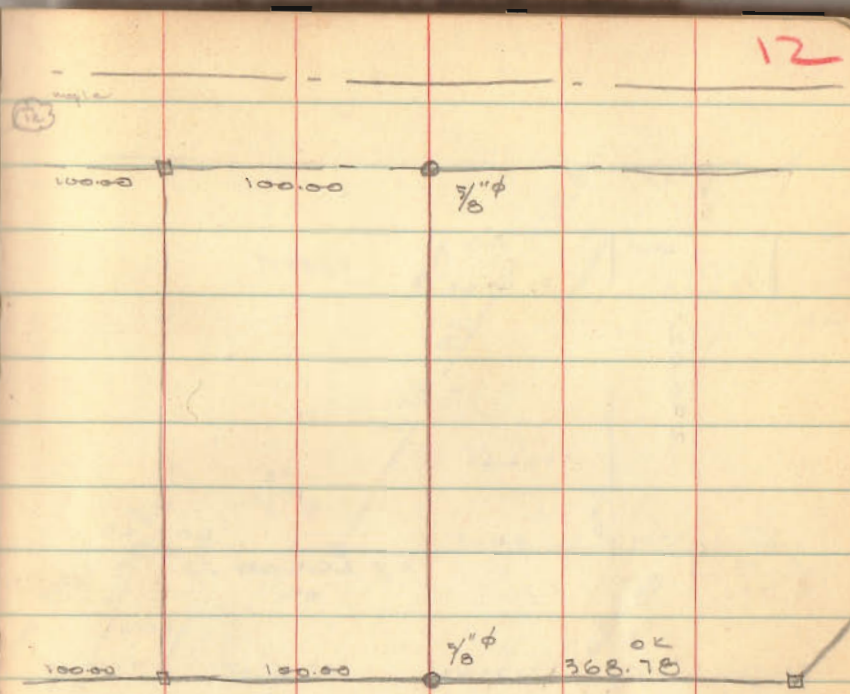
912.17
(822-45)

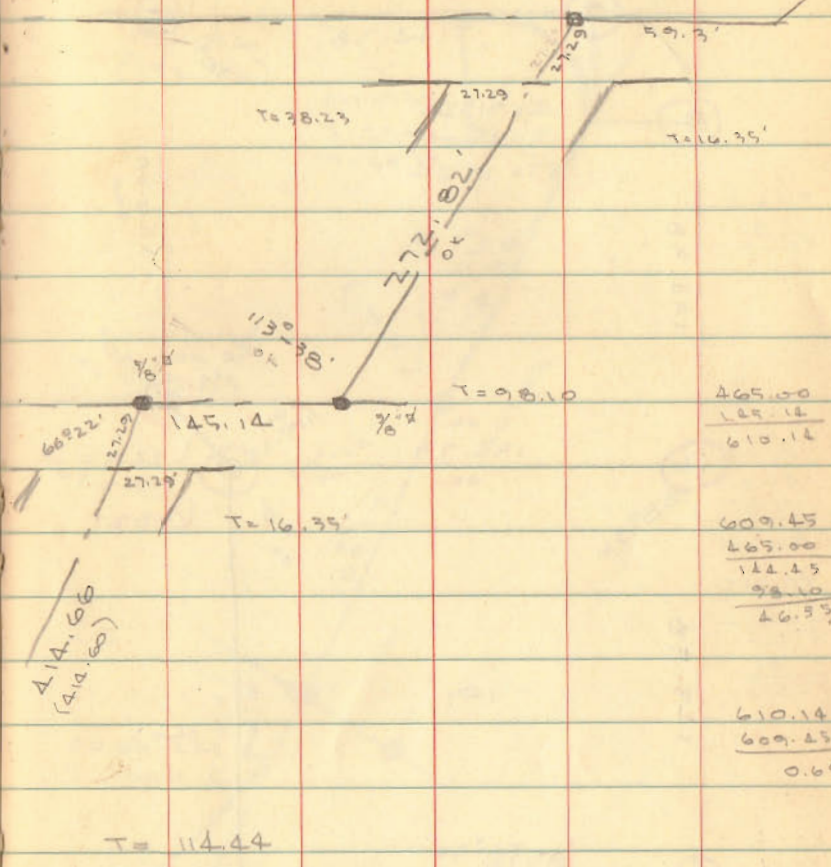
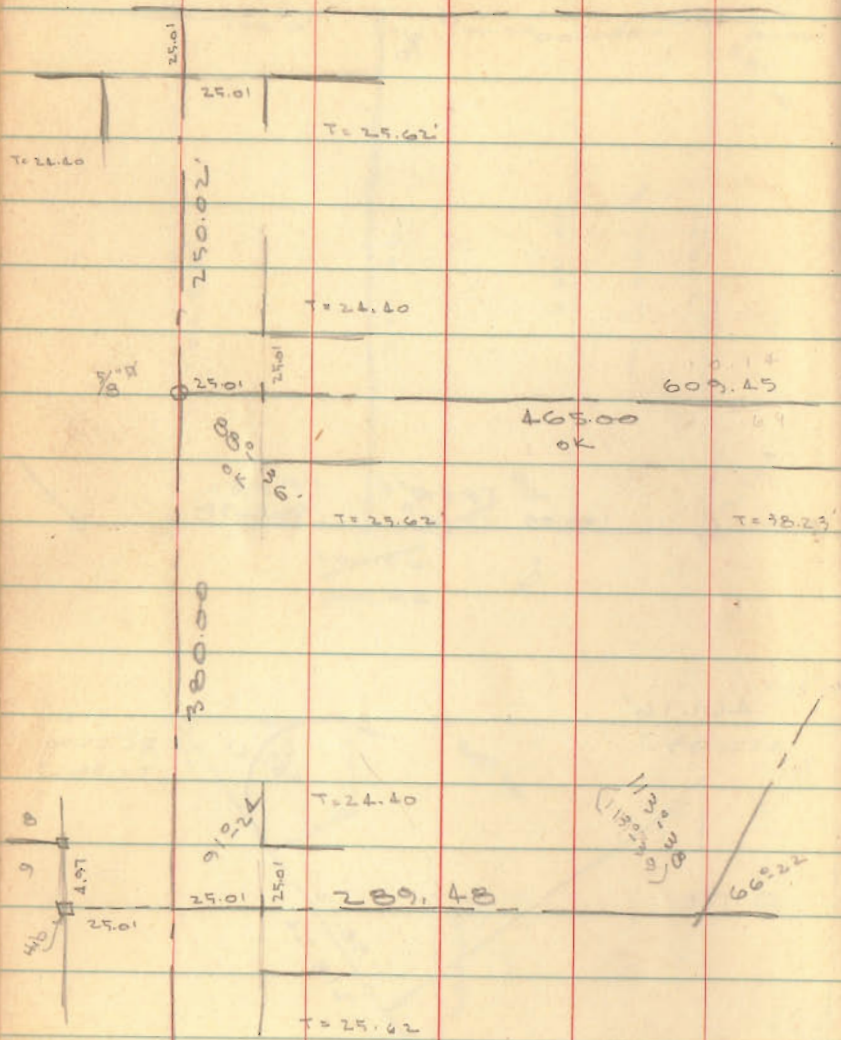
Hub Found



July 14, 1959
 Dodson
 G. Goodlin

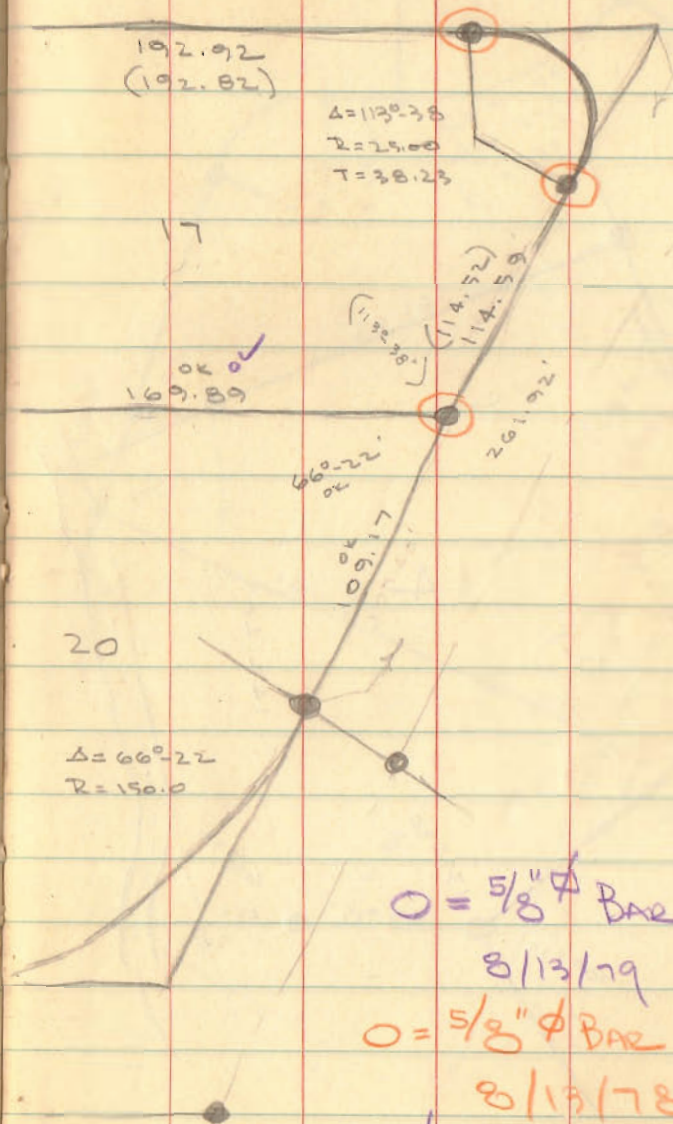
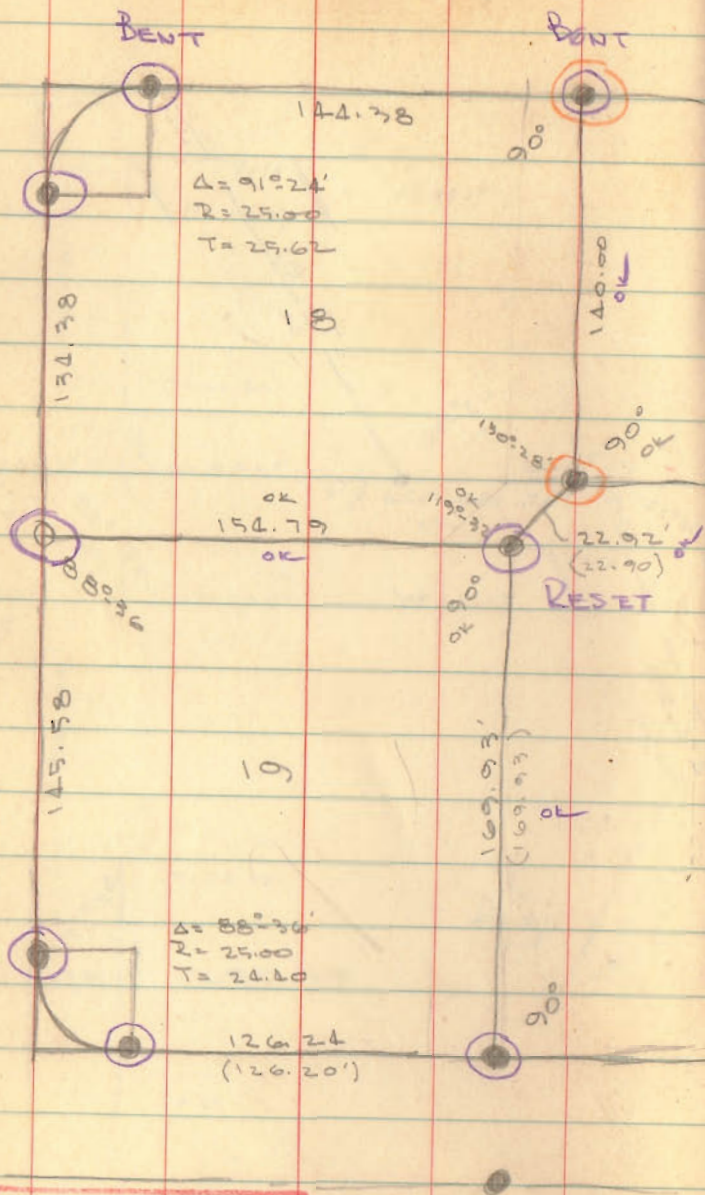
INDEXED ON MAP
 9619





465.00
125.14
<u>610.14</u>
609.45
465.00
125.14
<u>98.10</u>
46.53
610.14
<u>609.45</u>
0.69

INDEXED ON MAP
9619

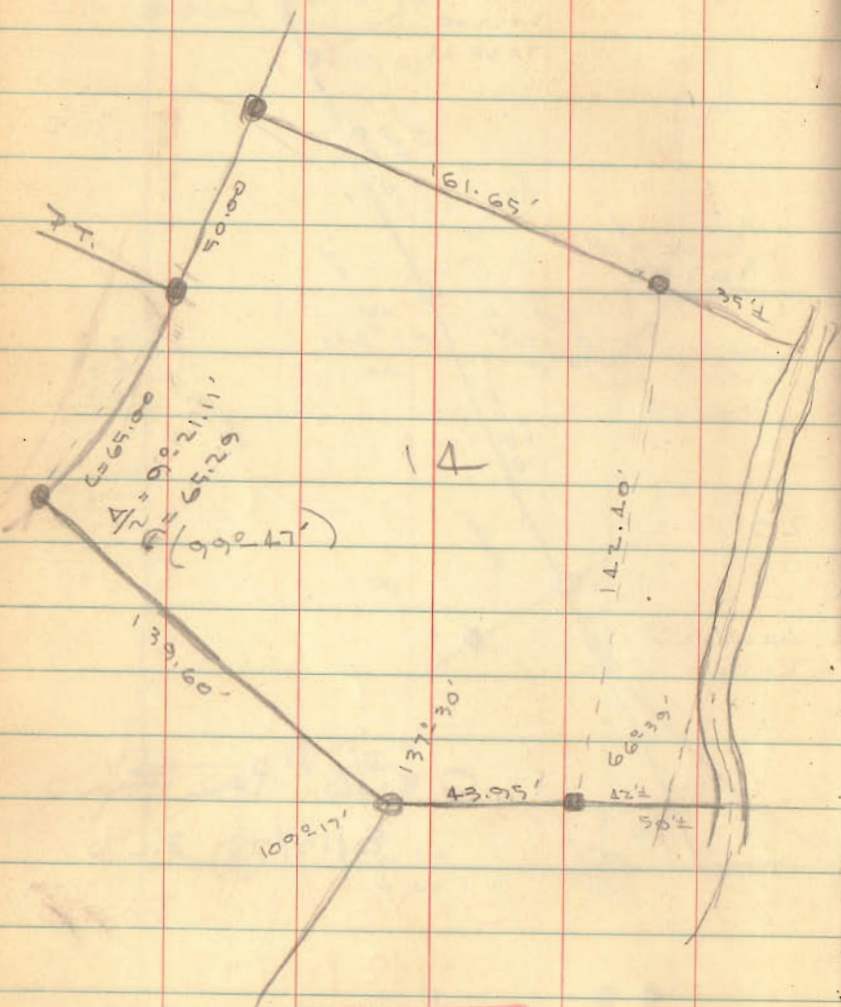


116.29
 38.23
 154.52

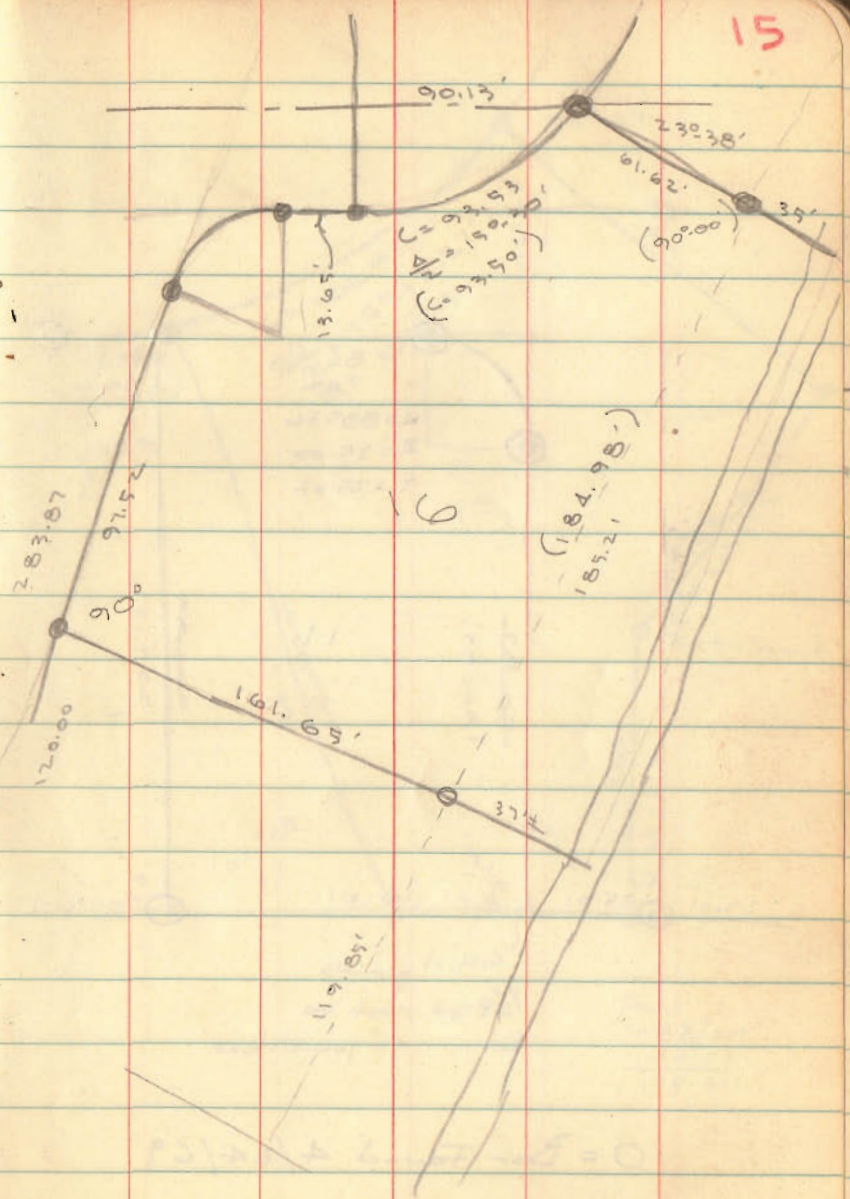
109.17
 116.29
 38.23
 263.69
 261.92
 109.17
 152.75
 38.23
 114.52

O = 5/8" ϕ BAR FOUND
 8/13/79 D.L.D.
 O = 5/8" ϕ BAR FOUND
 8/13/78
 5/8" ϕ BAR = ORIGINAL

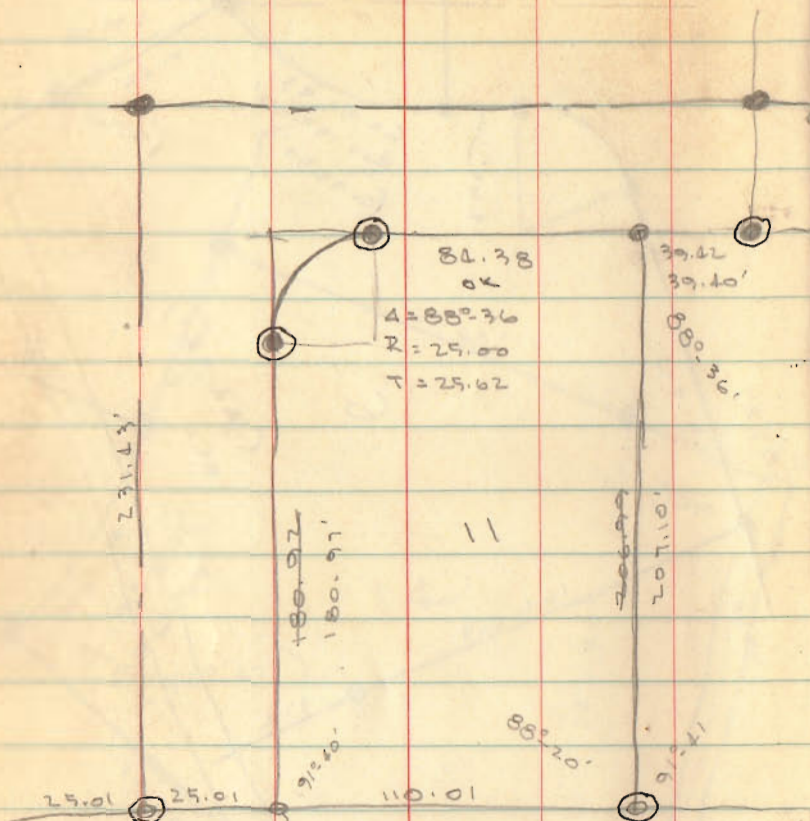
INDEXED ON MAP
 9619



INDEXED ON MAP
 9619



INDEXED ON MAP
 9619

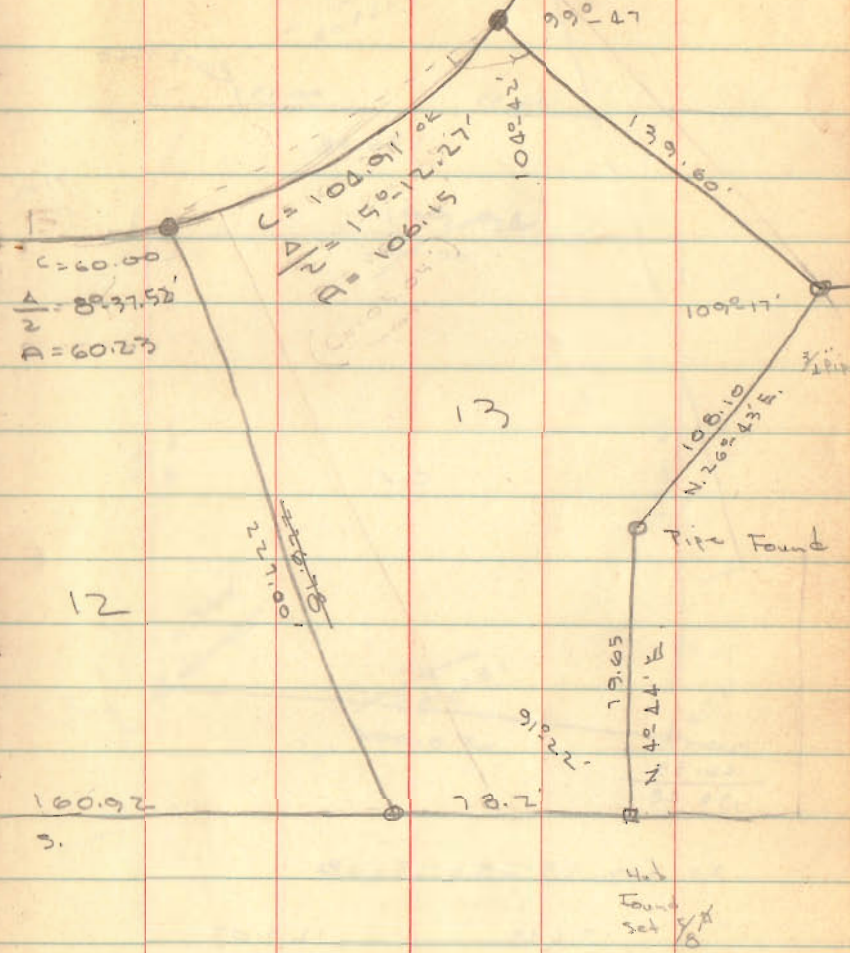


84.38
25.62
110.00

C.Hill placed
1/2" Pipe next to
Remains of ground stake

O = Bar Found 4/24/69

INDEXED ON MAP
9619



C = 60.00
A/2 = 88° 37.52''
A = 60.23

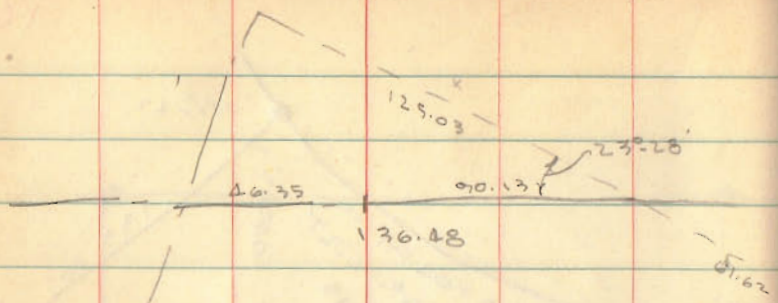
C = 104.91
A/2 = 150° 12.27''
A = 106.15

166.92

78.2

78.65
N. 40° 44' E.

226.6
Pipe Found



90.13
 46.35

 136.48

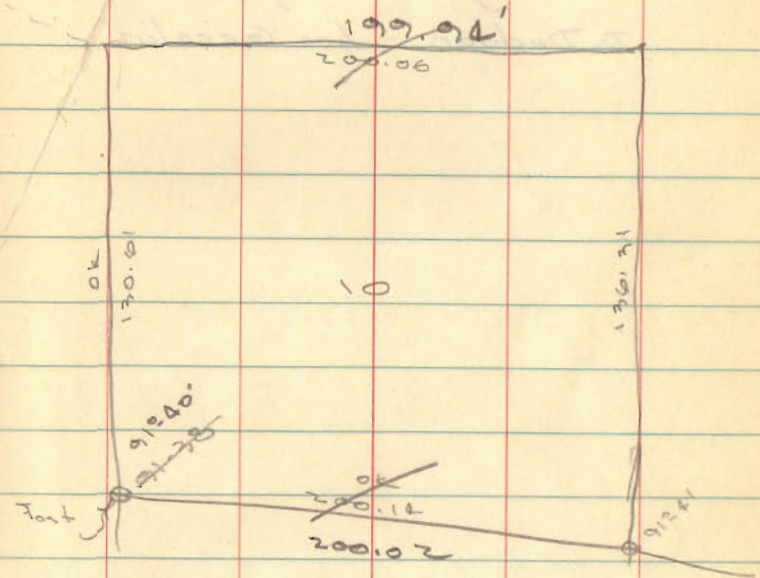
$x = \cos. 23-28 \times 136.48$

191673
 13648

 732904
 366452
 549678
 274839
 91613

 1250336224

INDEXED ON MAP
 9619



Foot
 91.40'
 200.14
 200.02

INDEXED ON MAP
 9619

Dr. John B. Traul
Sub division

Woodland

Surveyed July 1956

D. Dodson - Les Geeslin

INDEXED ON MAP
9620

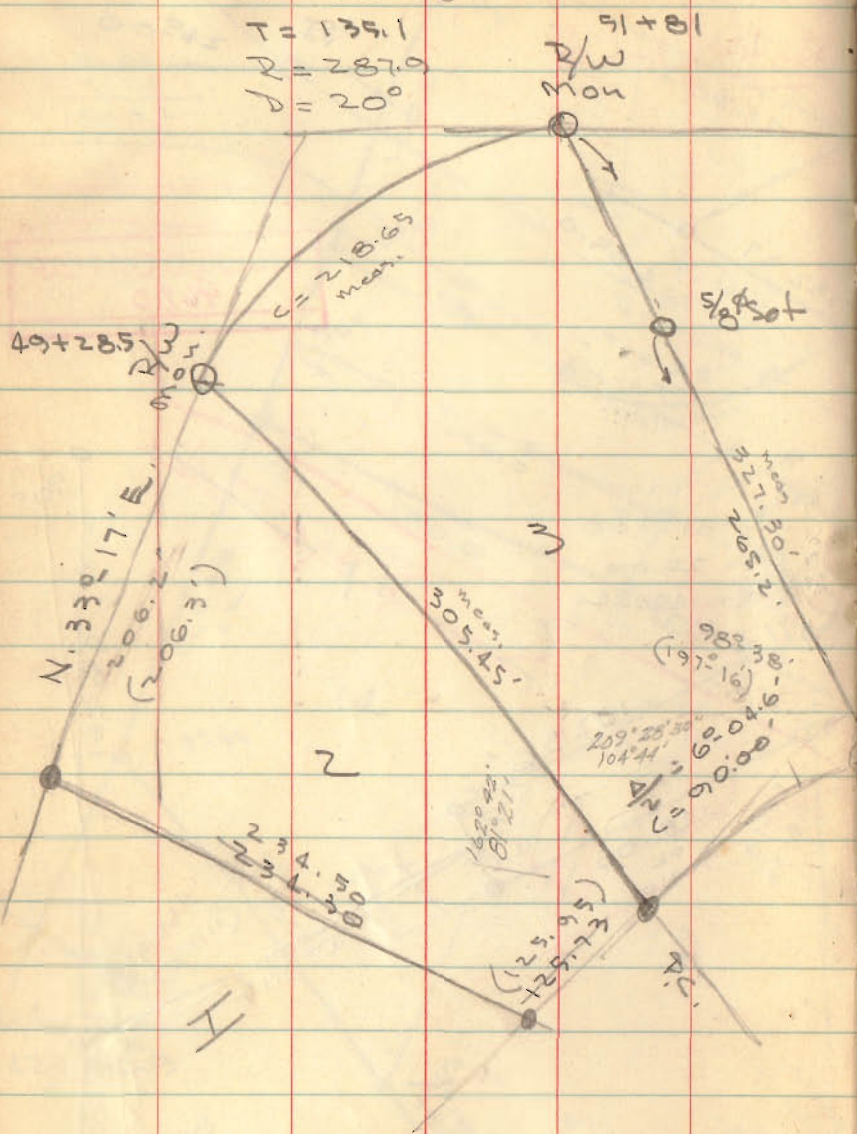
Curve Data.

$$\Delta = 50^{\circ}30'$$

$$T = 135.1$$

$$R = 287.0$$

$$b = 20^{\circ}$$



Sec ho. Co. Eng. Plan - L-22

20

for S.R. No. 47

N. 83°-47'E.

230.21

O = 5/8" BAR JOBS

10/19/77 A.L.D.

Stakes set for W-S lines
on lot 4

All bars found were in
good shape

$\Delta = 52^{\circ}19'$
 $R = 86.28$
 True Sight
 (5°-51')
 $\Delta = 52^{\circ}55.4'$
 $R = 87.80'$
 $C = 87.72$

Curve Data

$$\Delta = 20^{\circ}00'$$

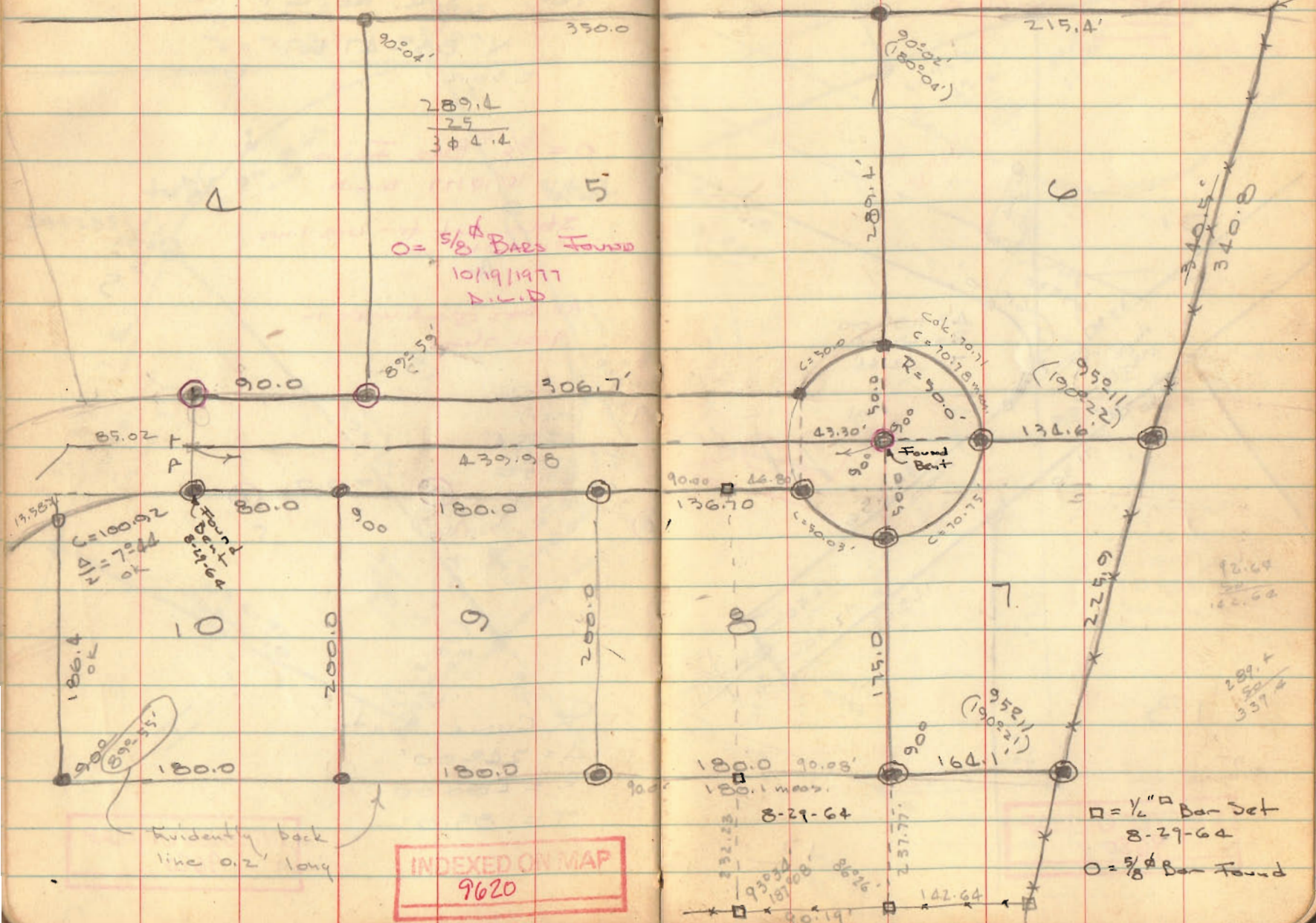
$$R = 400.00$$

$$T = 85.02$$

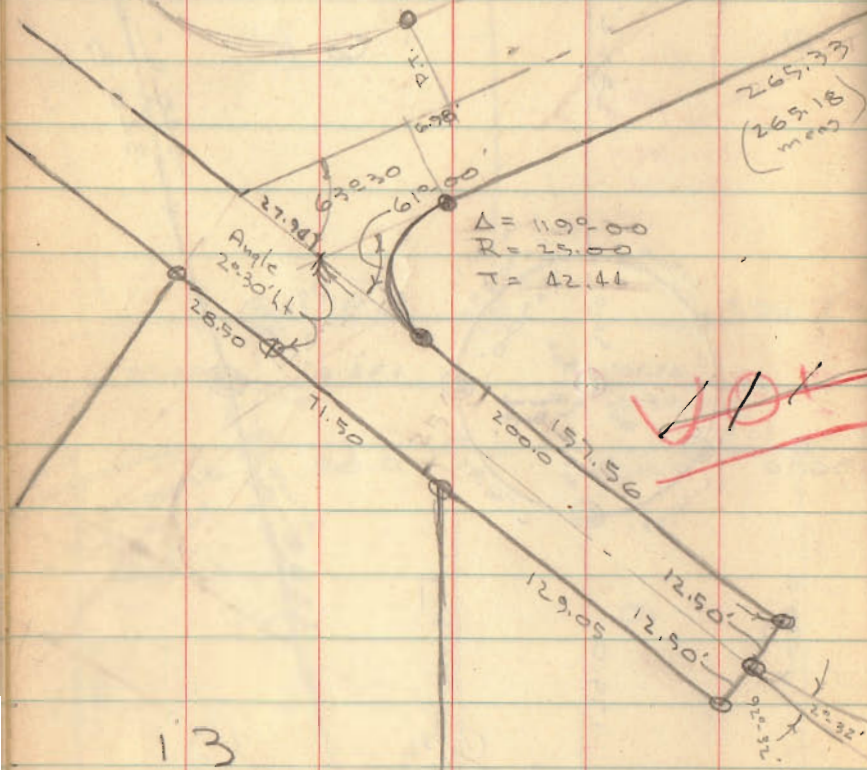
INDEXED ON MAP

9620

Steel post in conc.



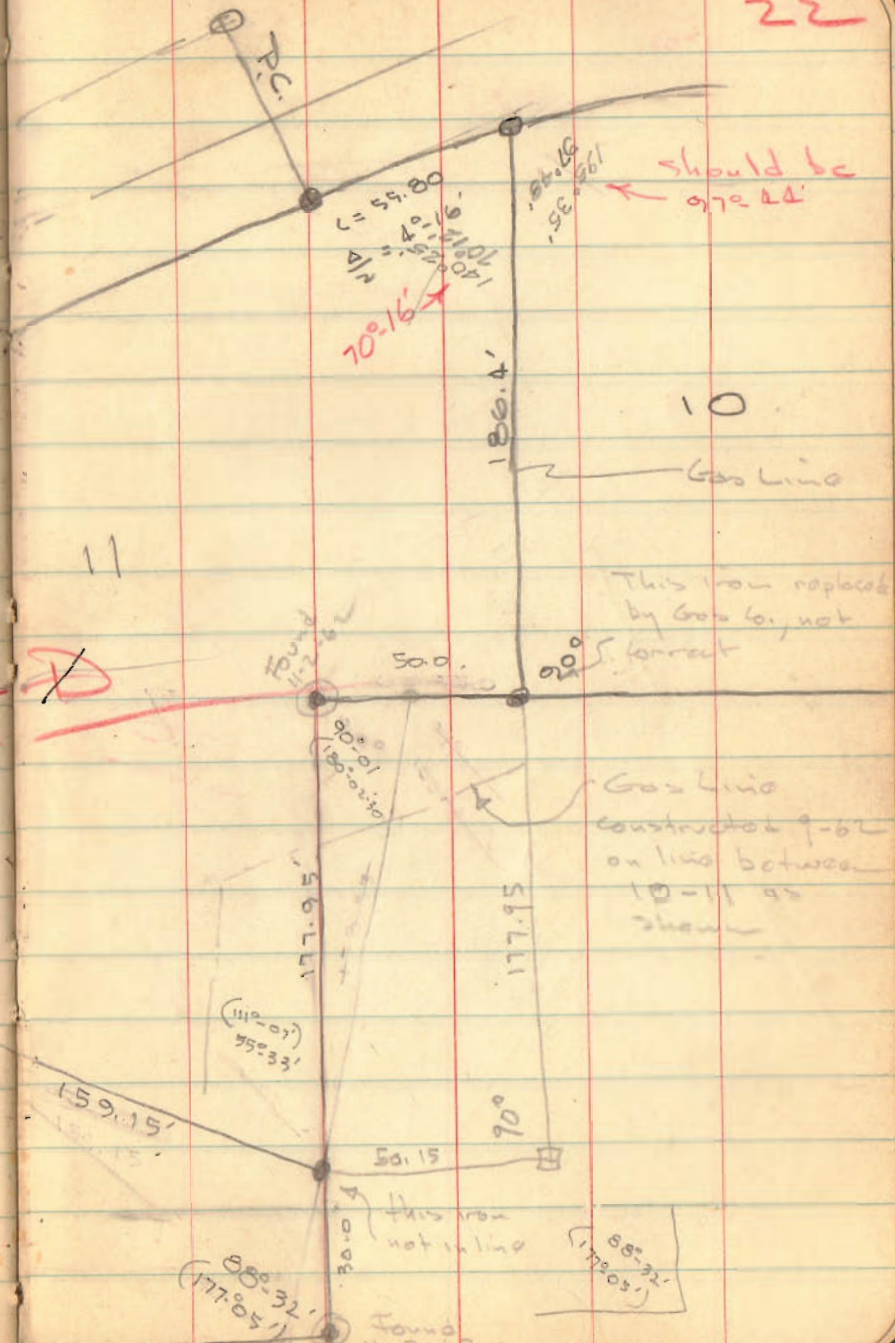
Note: this page
Not Void



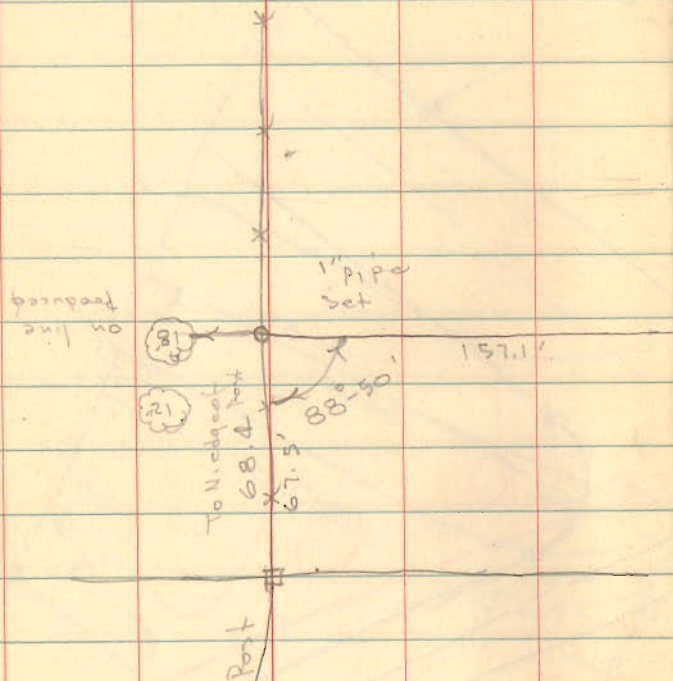
INDEXED ON MAP
 9620

12

22



Travl to Hilliker



hot 12

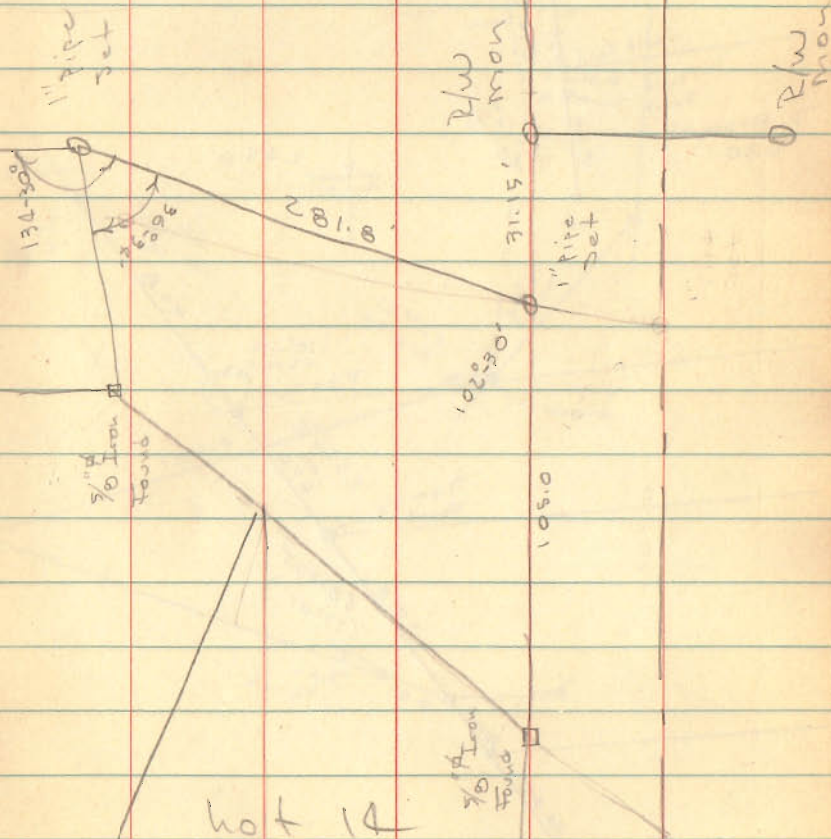
hot 13

INDEXED ON MAP
3242

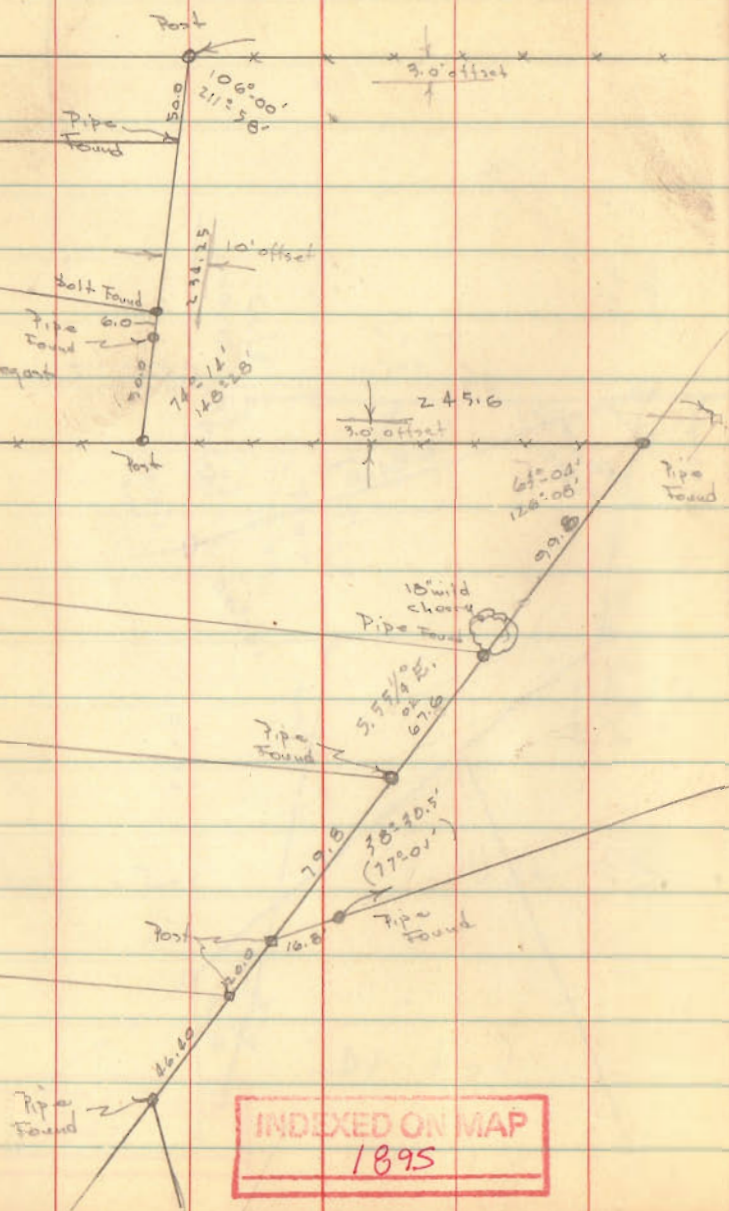
Dodson
Det

4/30/58

25

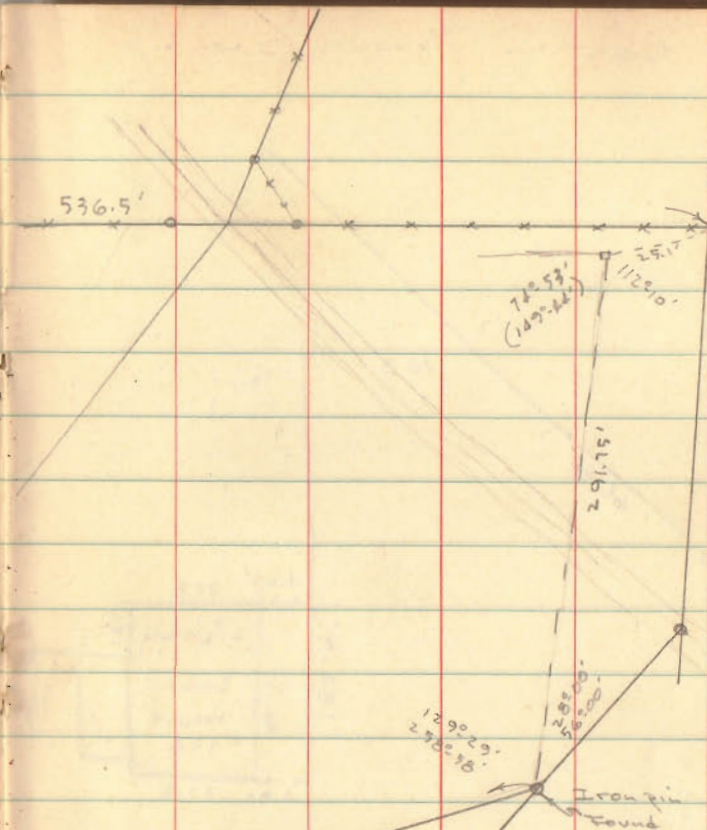


hot 14

Dr. Coztin Survey
Bellefontaine

INDEXED ON MAP

1895

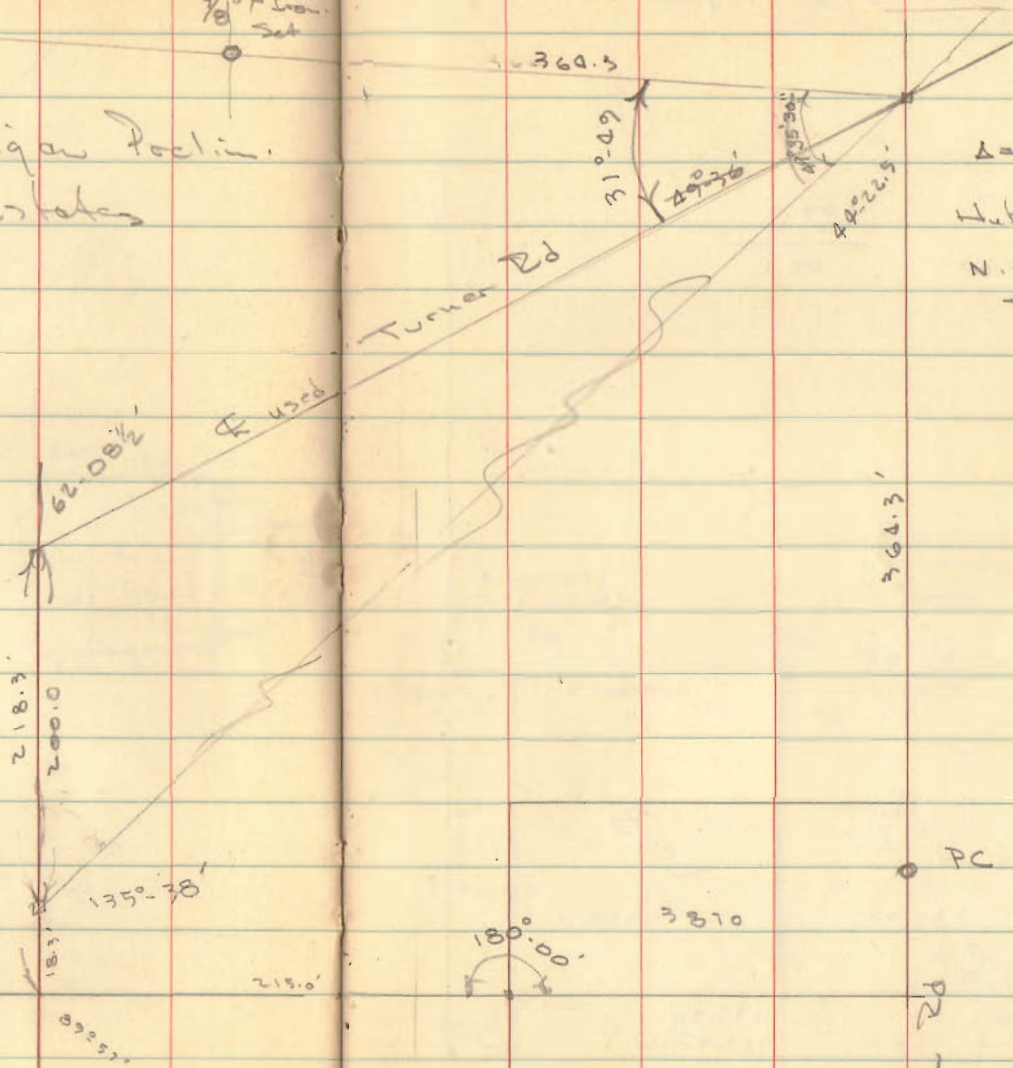
INDEXED ON MAP
1895

FS
 99 35 30
 99 11

Turner & Milligan Paving
 Belle-Air Estates



~~$\Delta = 44^\circ - 22'$~~



Aug. 1957.
 Hudson Geesli

28

179-00
84-00
95-98
11-48
12-33
179-00
12-28
135-37

$\Delta = 86^\circ - 02'$
 H.b at PI
 N. side Milligan
 St.

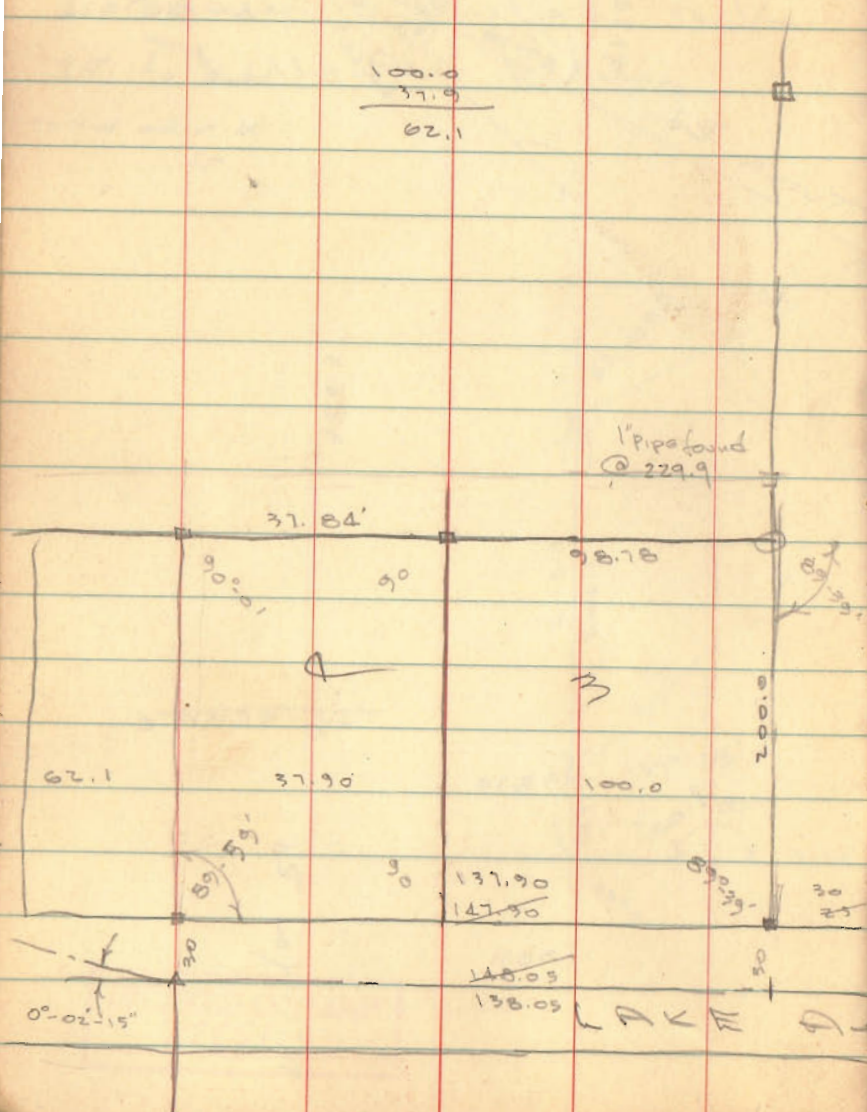
INDEXED ON MAP
 2251

Bellefontaine Development Co.
Lake View, O.

29

100.0
57.9

42.1



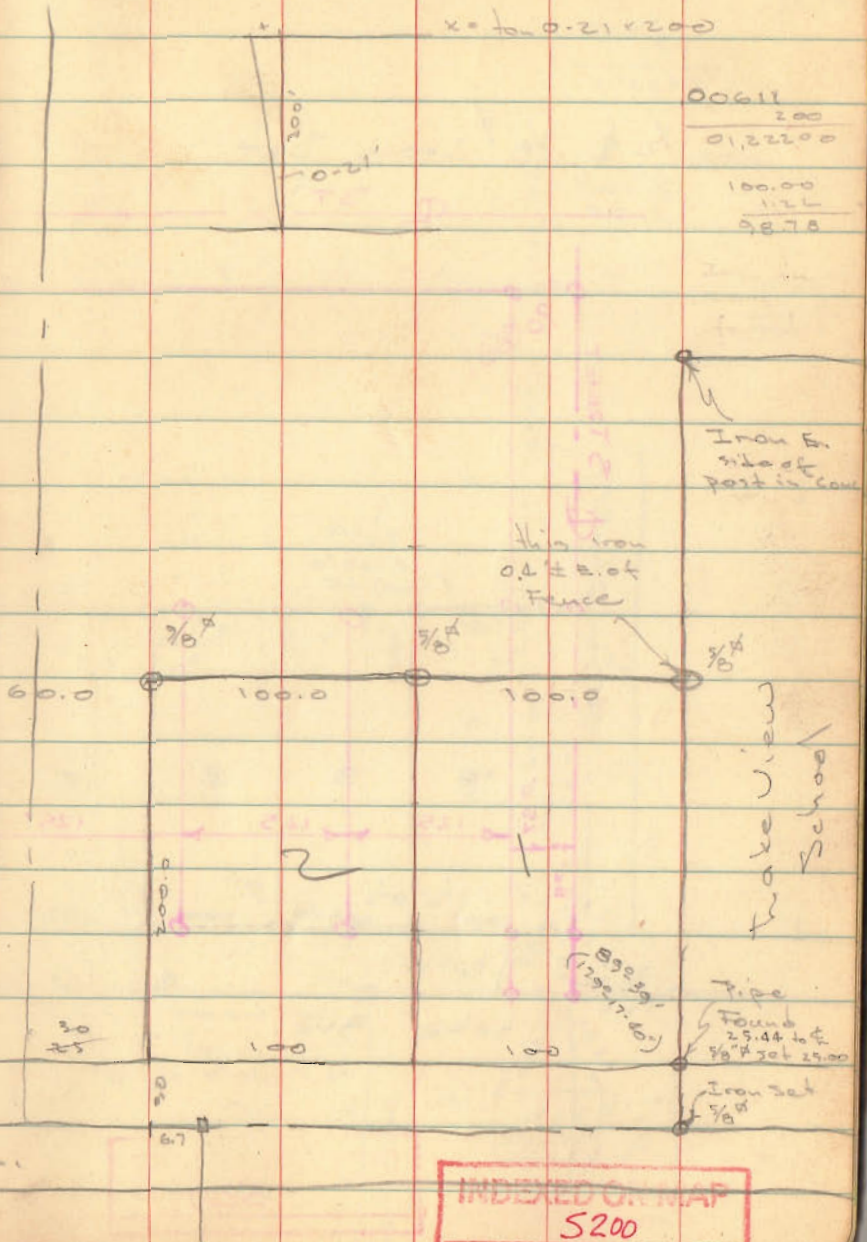
1" Pipe found
@ 229.9

$x = 60.0 - 21 + 200$

00611
200

0,222.00
100.00
122

98.78

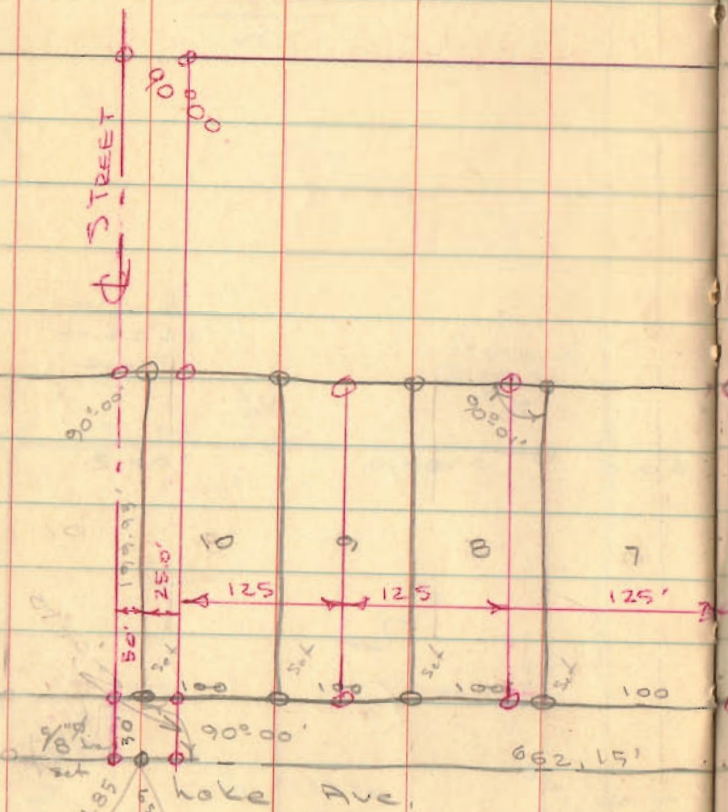


INDEXED ON MAP
5200

Development Co. (cont'd)

1/2 & 3/8" Irons Set

ST



INDEXED ON MAP
S200

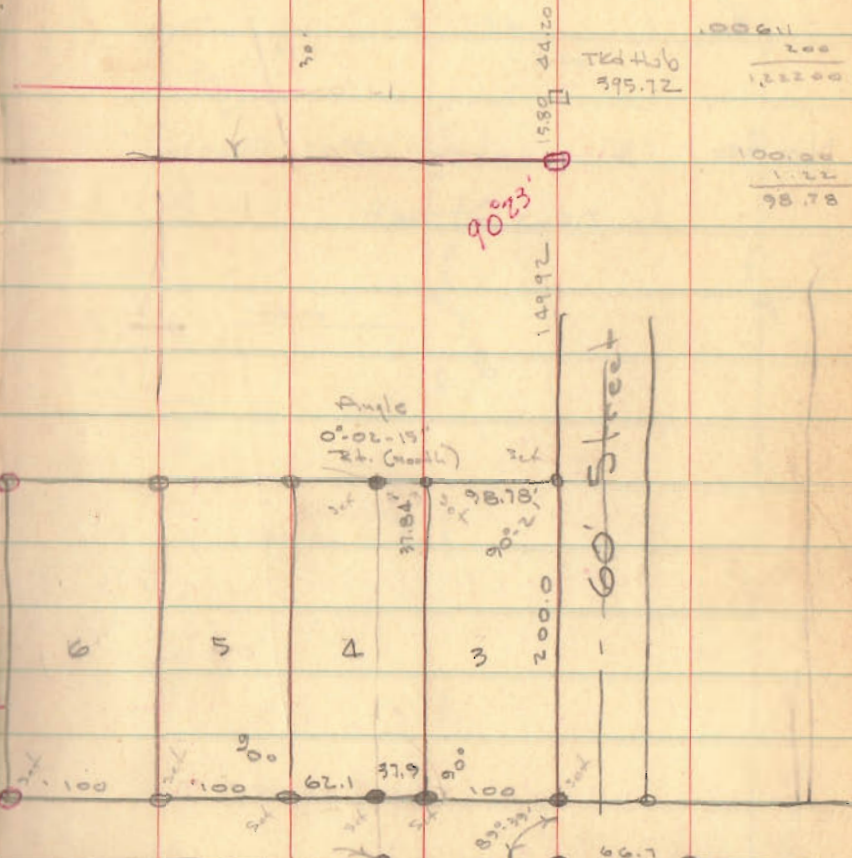
Dodson
Geeslin
Tovis

Sept 7, 1957 30

.00019	
2.00	
0.9800	
<hr/>	
.00011	
30	
<hr/>	
0.18330	

.00011	
2.00	
1.2200	
<hr/>	
TKd 456	
395.72	

100.00	
1.22	
<hr/>	
98.78	



Prop line
Core line

Prop line
Core line

INDEXED ON MAP
S200

06

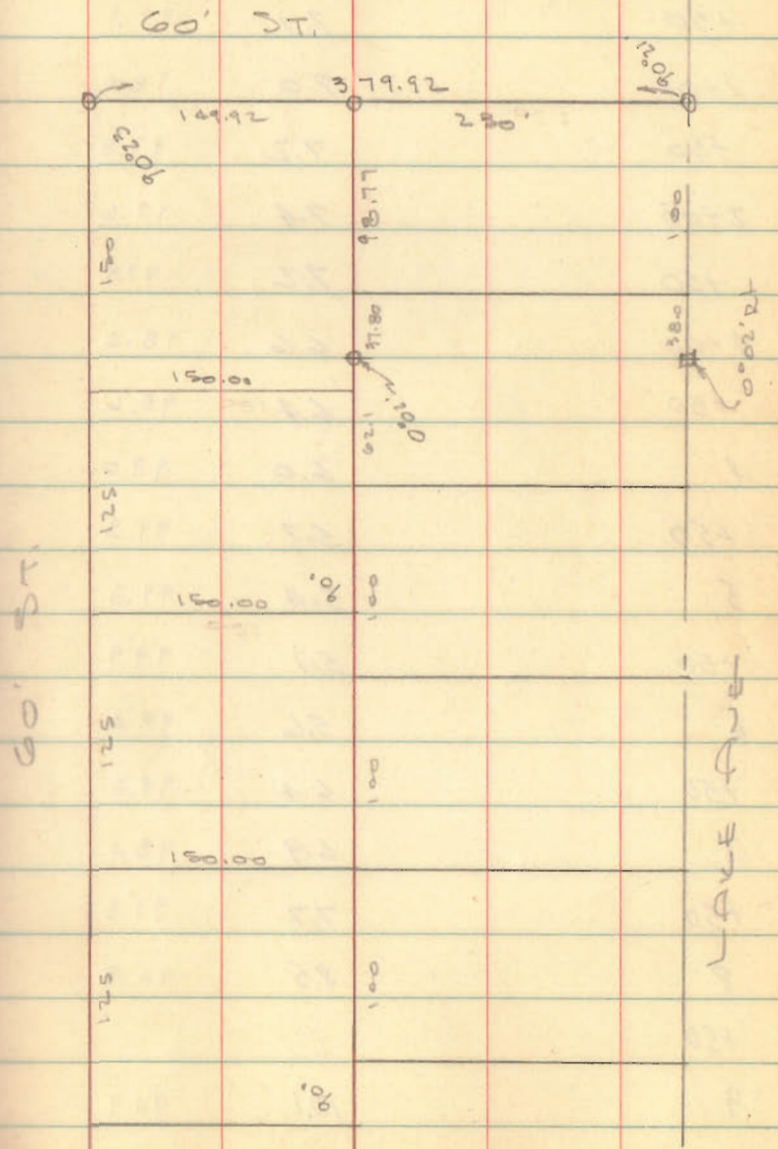
NOTE: Eliminated $0^{\circ}02'$ Angle
in new Street

INDEXED ON MAP
S200

Dodson
Whitlow

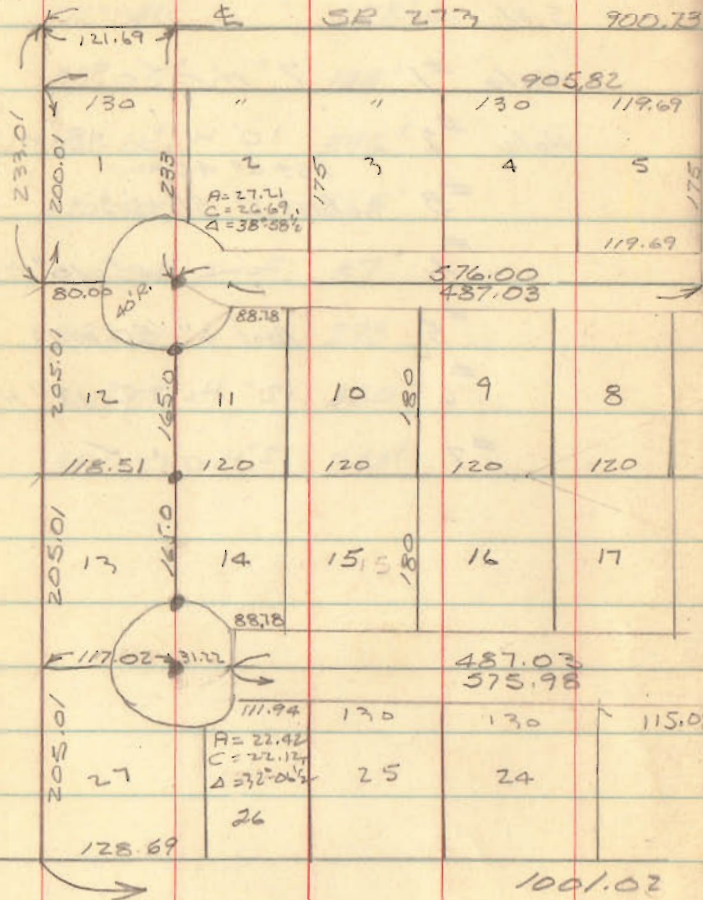
3/26/60
30'

31
N.E. Corner
West Ave



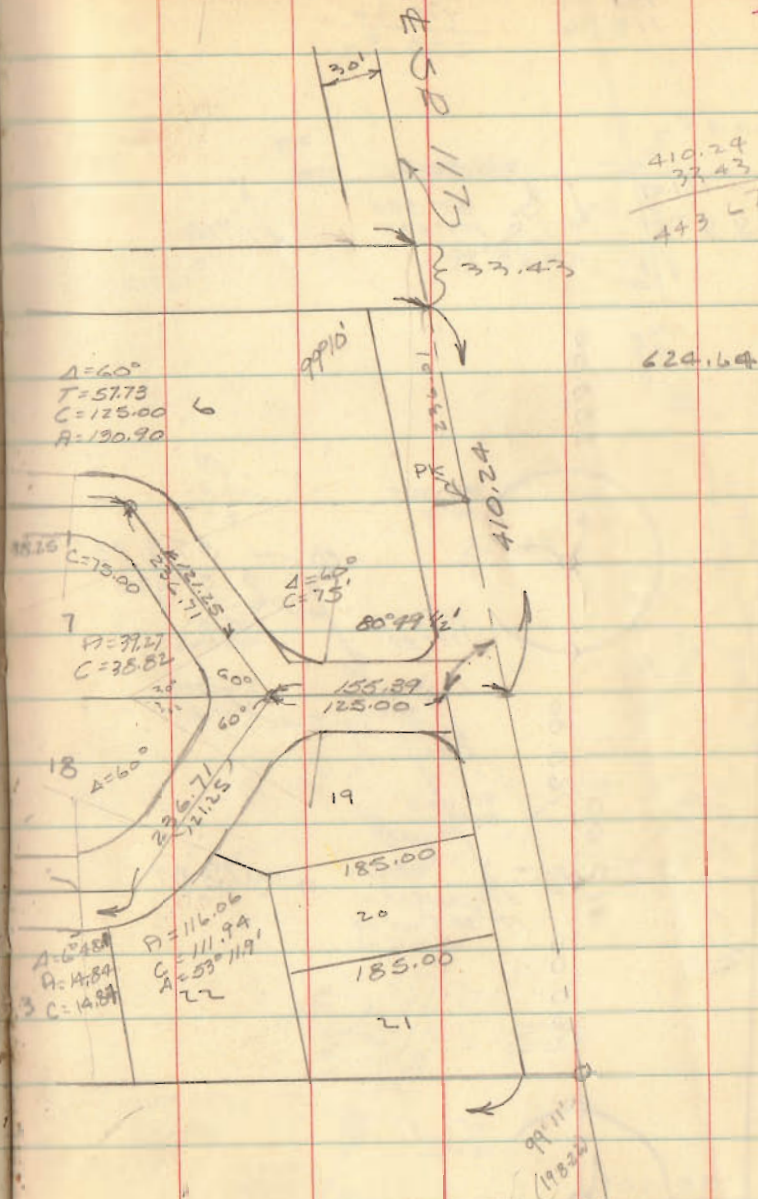
NORTH Fork JORD.

PK Fd 949.37 meas



INDEXED ON MAP
3934

9.25-65 36



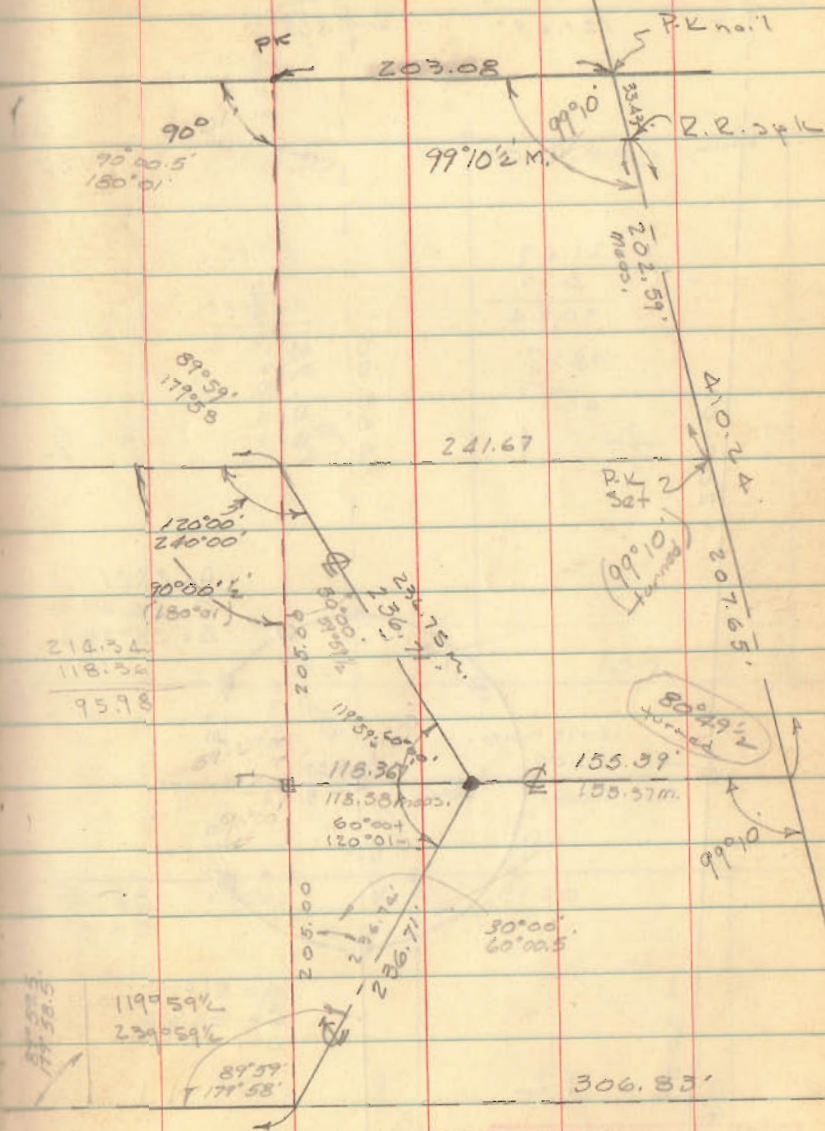
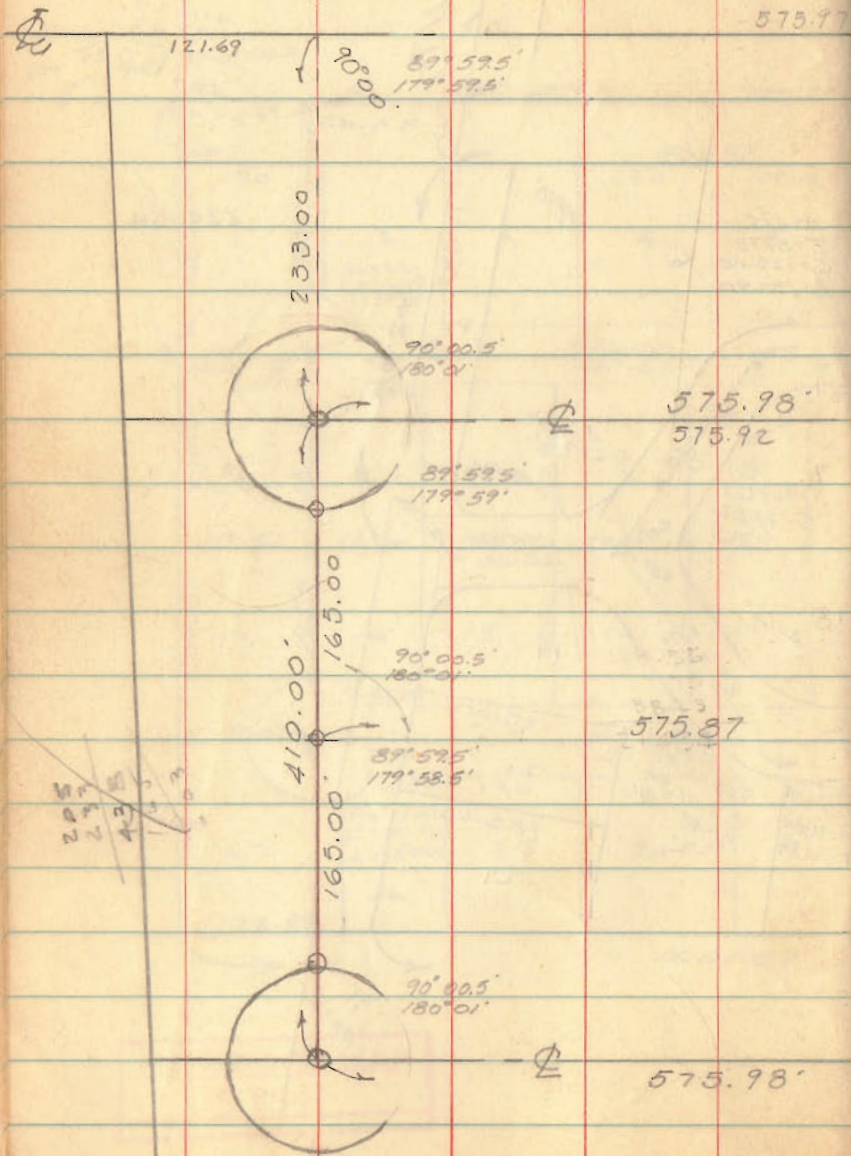
410.24
37.43
443.67

624.64

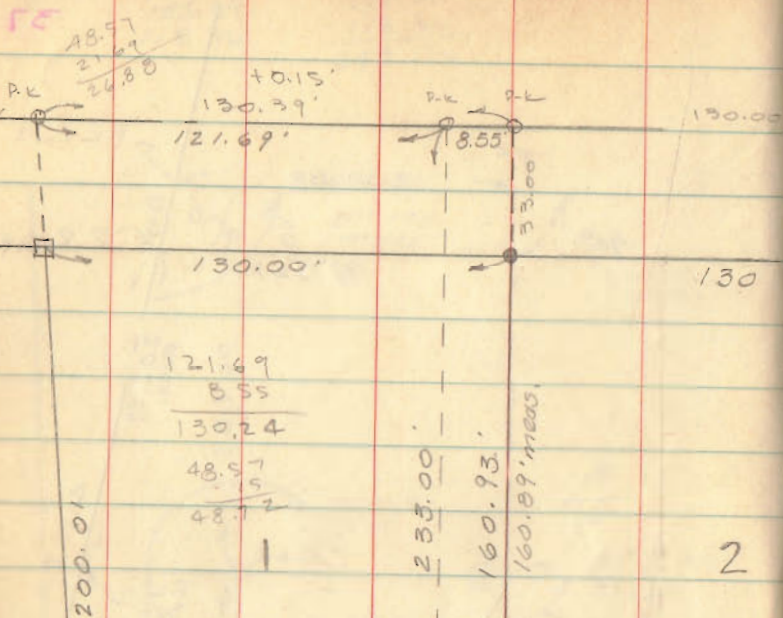
99.11
190.24

25

155.39
118.36
243.26



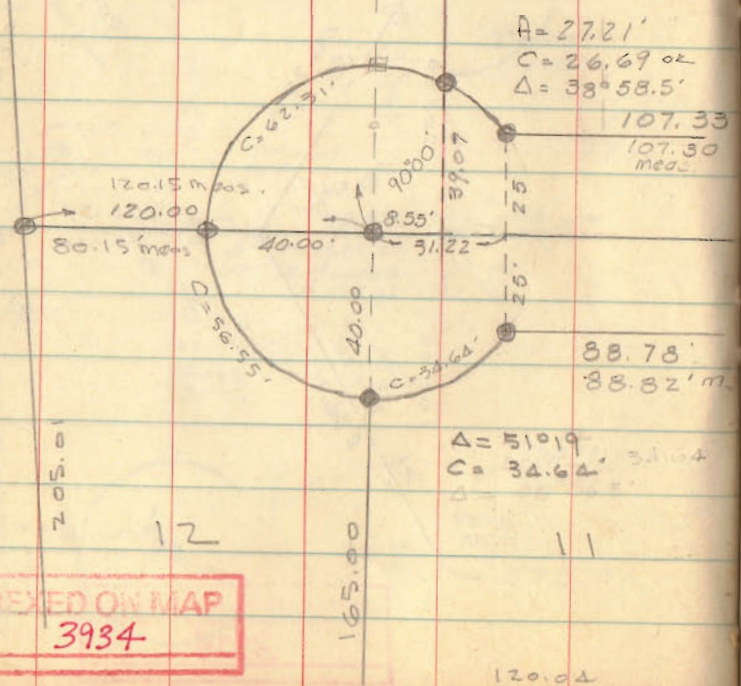
INDEXED ON MAP
3934



121.69
8.55
130.24
48.97
5
48.12

200.01

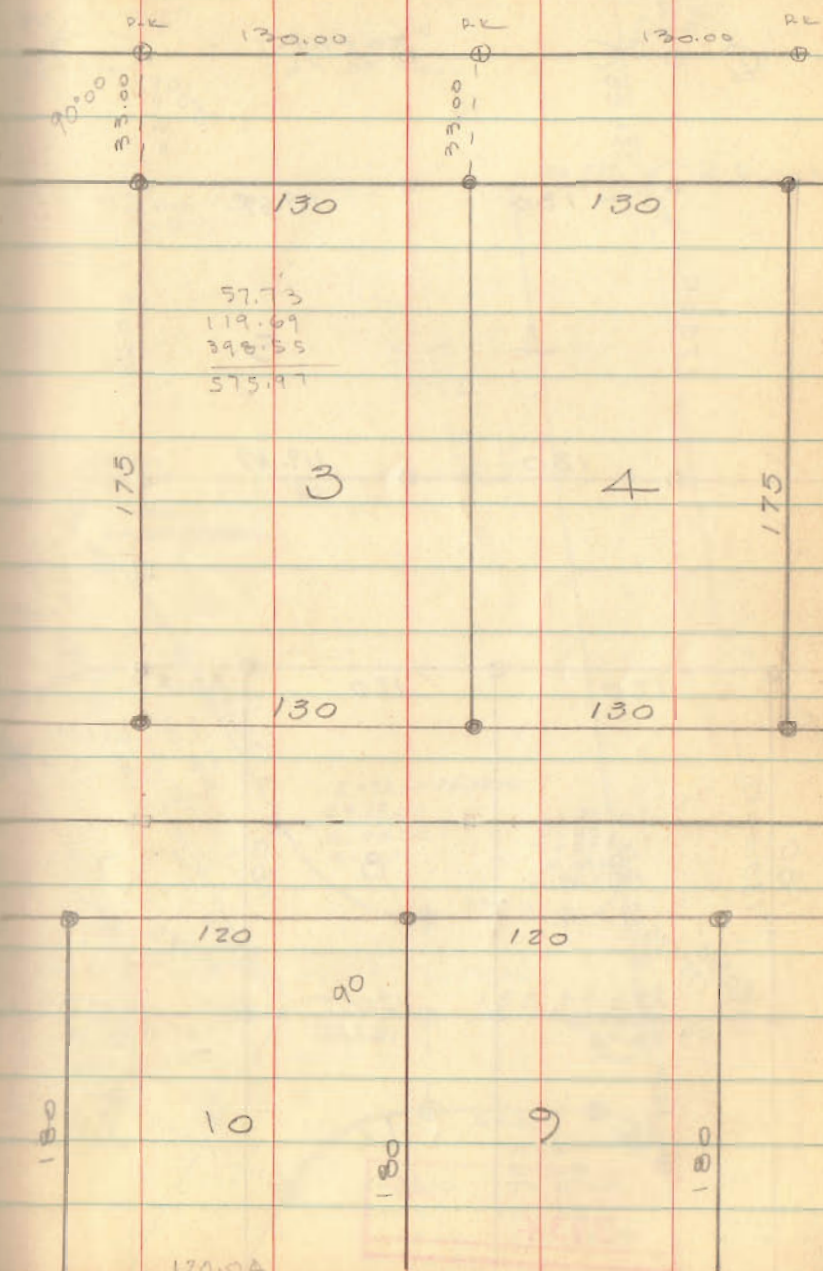
2



12

11

INDEXED ON MAP
3934



57.73
119.69
398.35
575.97

175

3

4

175

118.38
40.47
77.91

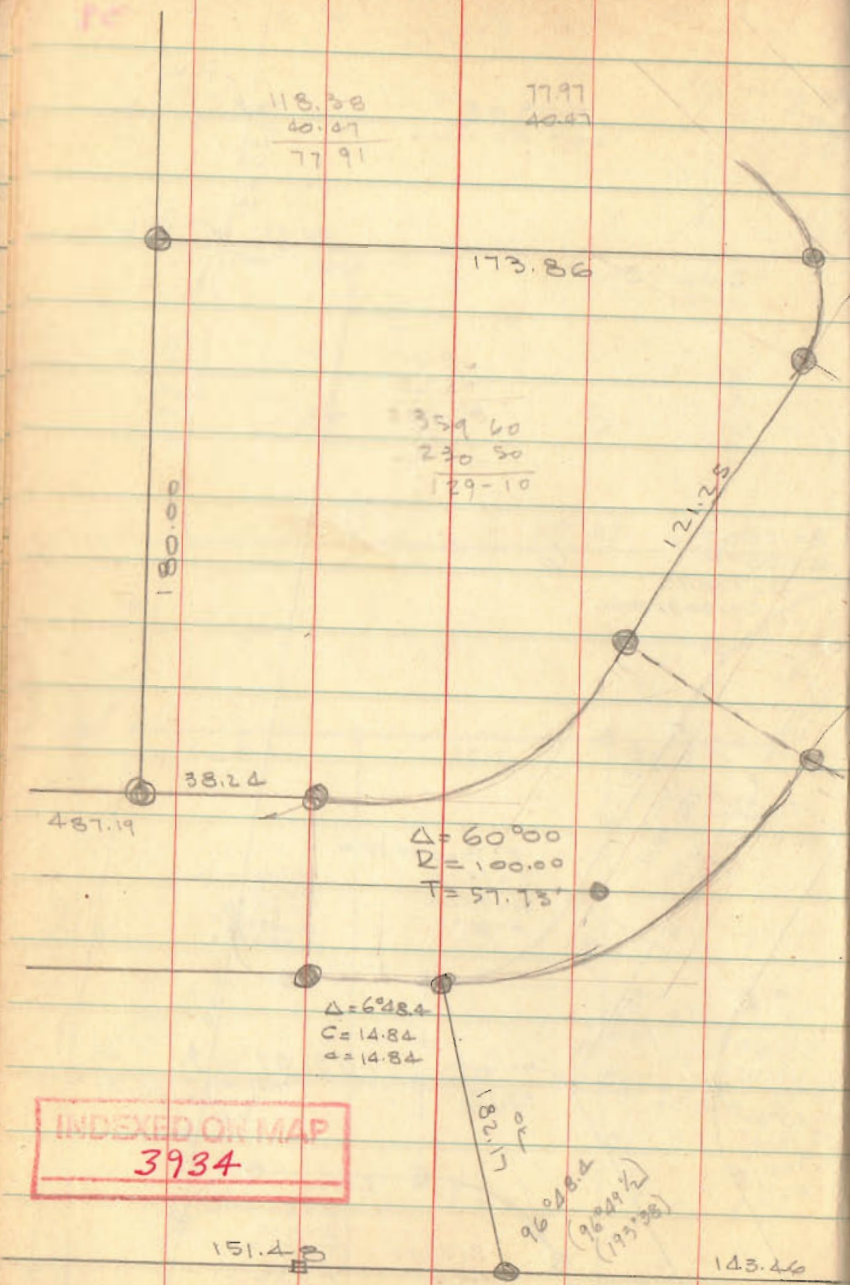
77.97
40.47

359.60
230.50
129.10

$\Delta = 60^{\circ}00'$
 $R = 100.00$
 $T = 57.15'$

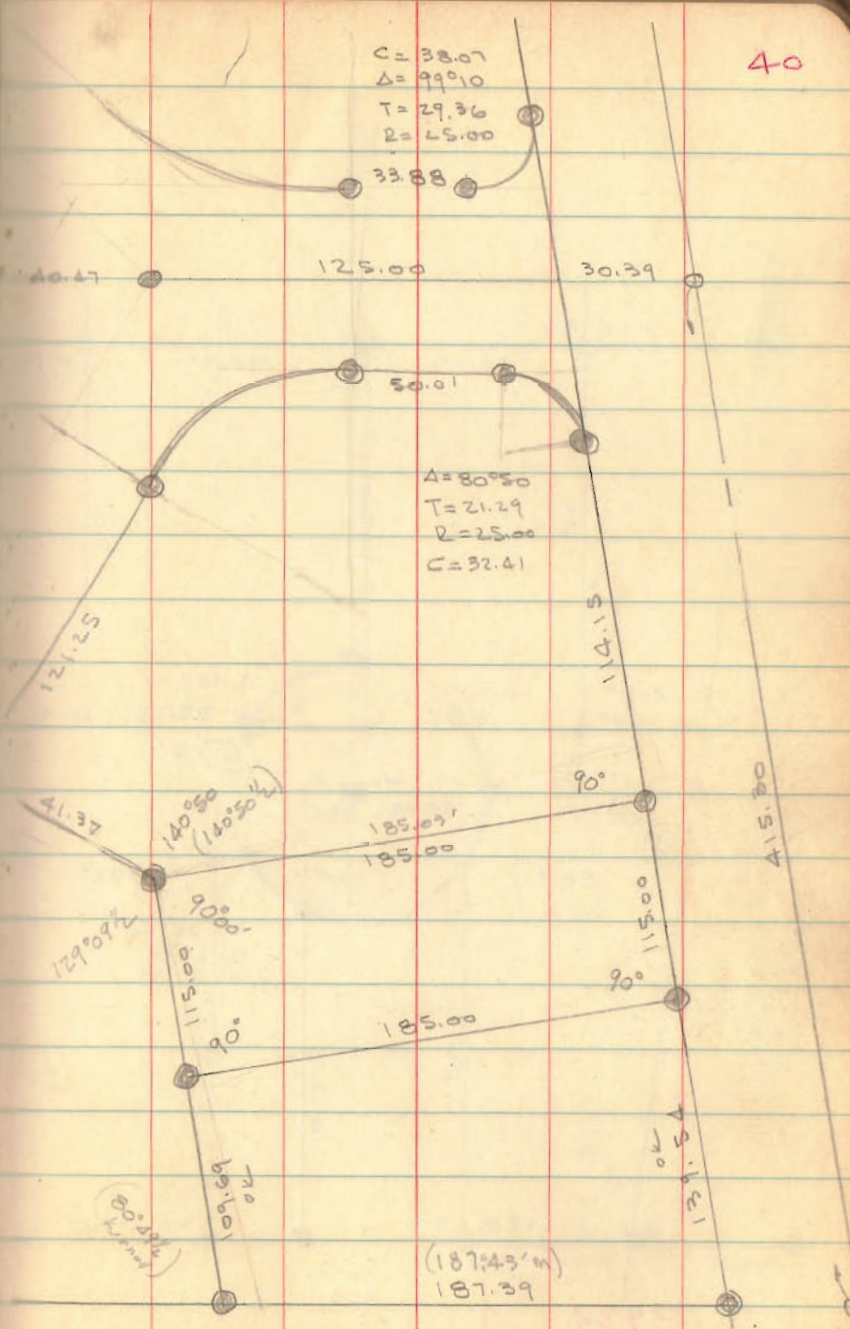
$\Delta = 6^{\circ}28.4'$
 $C = 14.84$
 $d = 14.84$

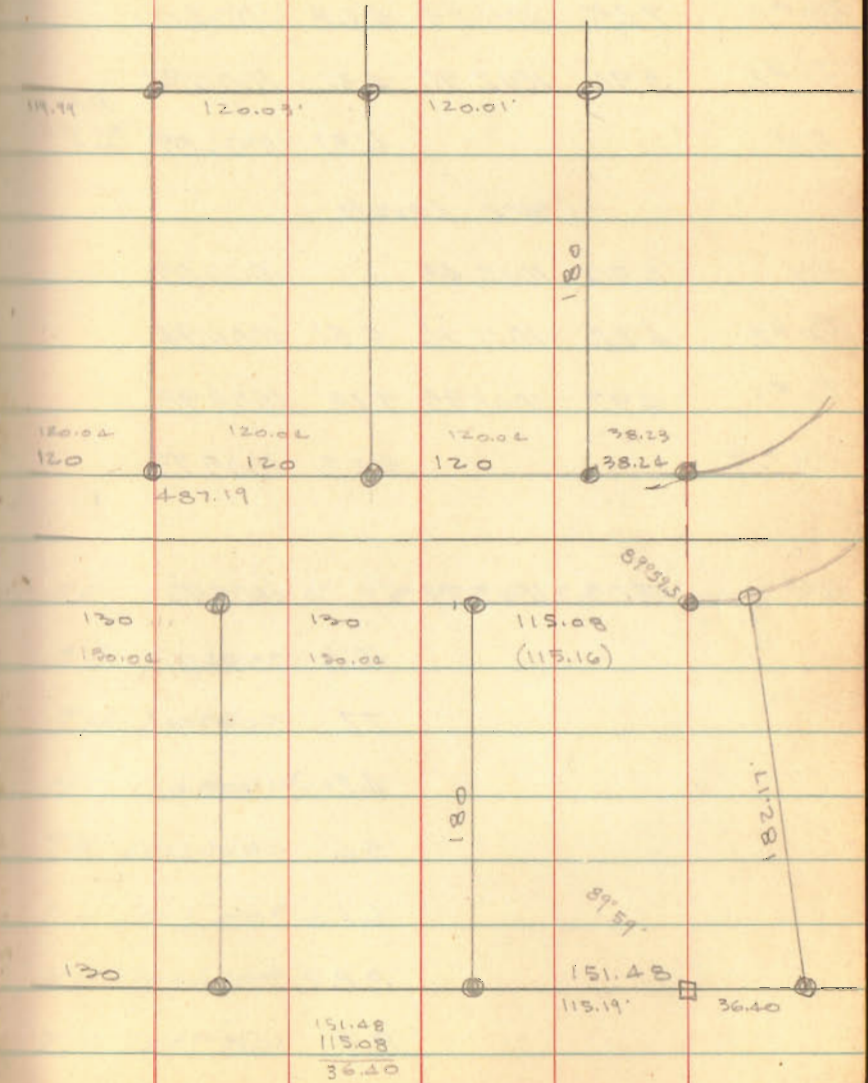
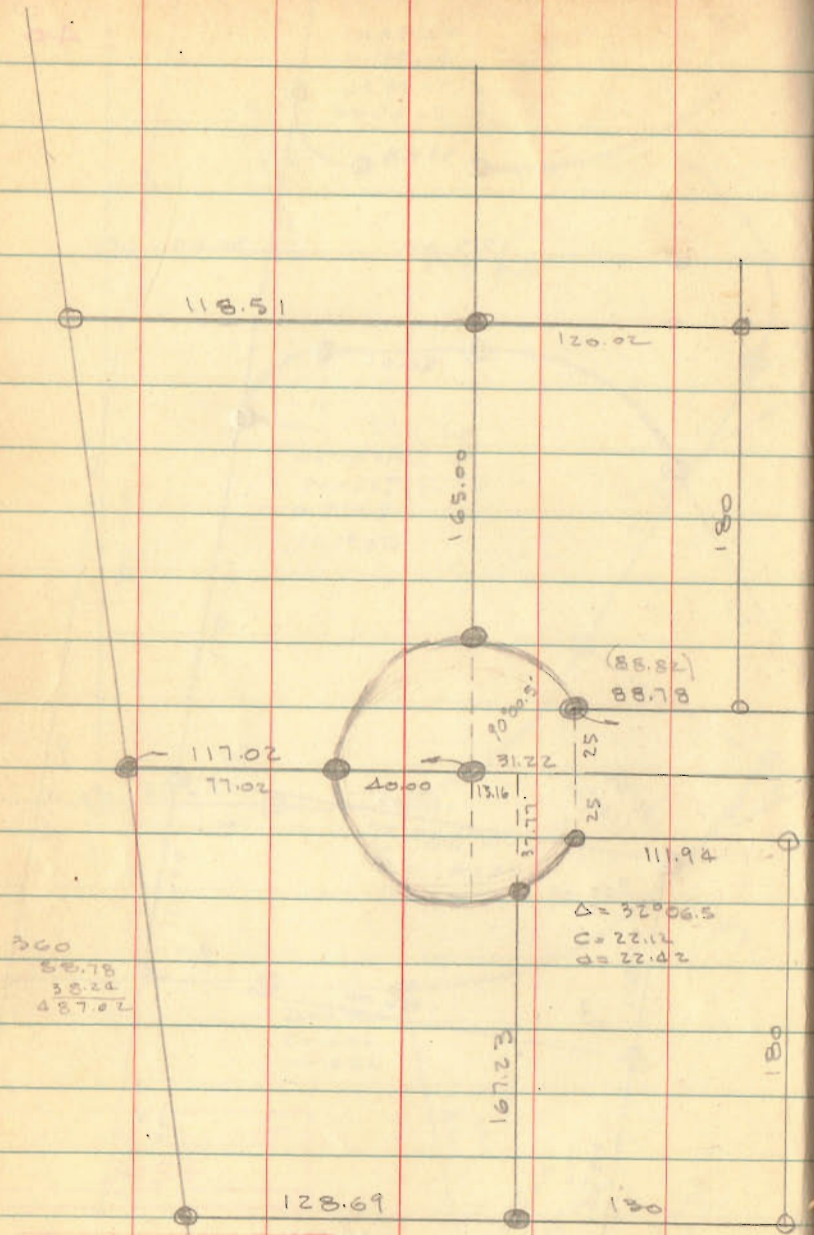
INDEXED ON MAP
3934



$C = 38.07$
 $\Delta = 99^{\circ}10'$
 $T = 29.36$
 $R = 25.00$

$\Delta = 80^{\circ}50'$
 $T = 21.29$
 $R = 25.00$
 $C = 32.41$





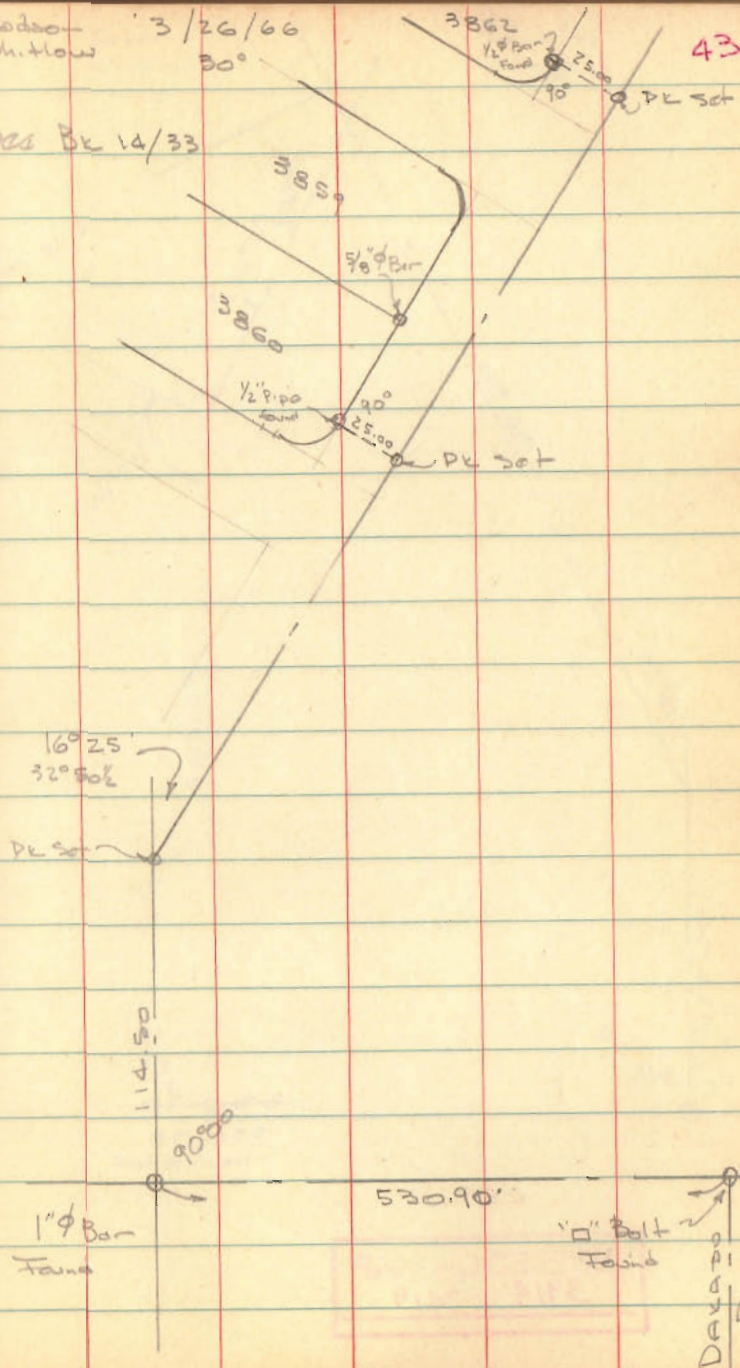
INDEXED ON MAP
3934

MAPLE HILL SUBD

BELLEFONTAINE

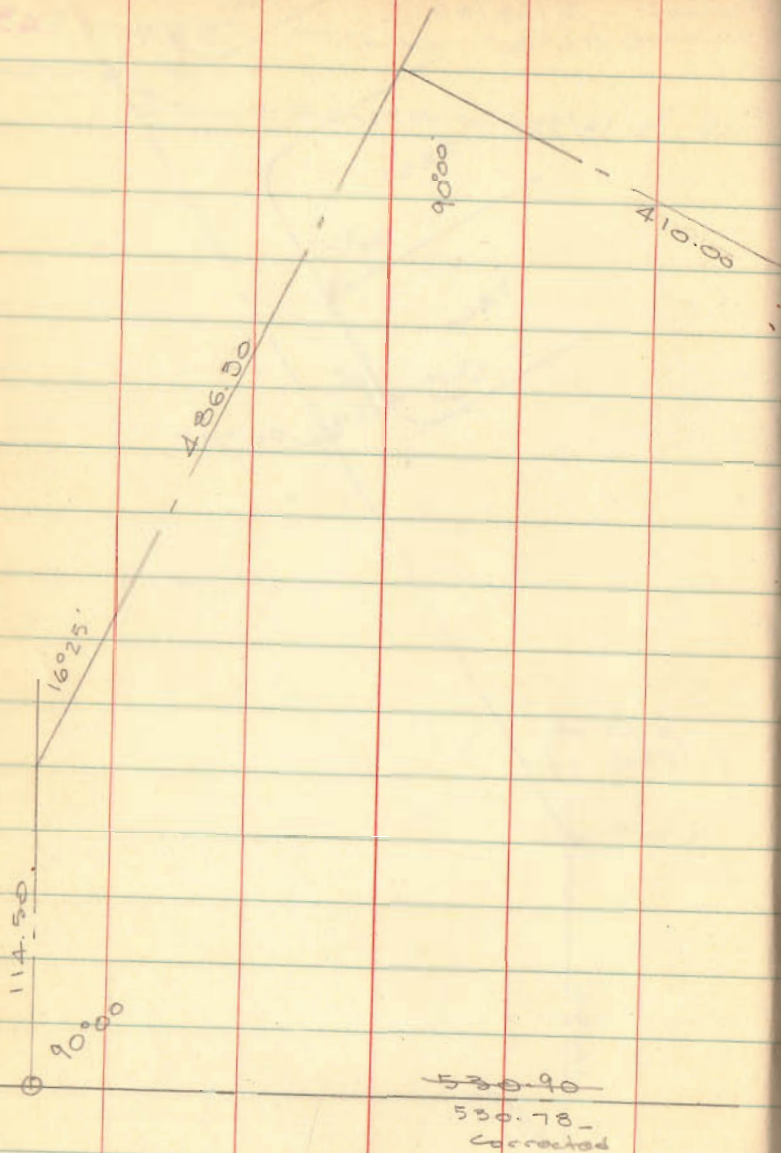
Dodson-Whitlow 3/26/66

See BK 14/33



INDEXED ON MAP

3420

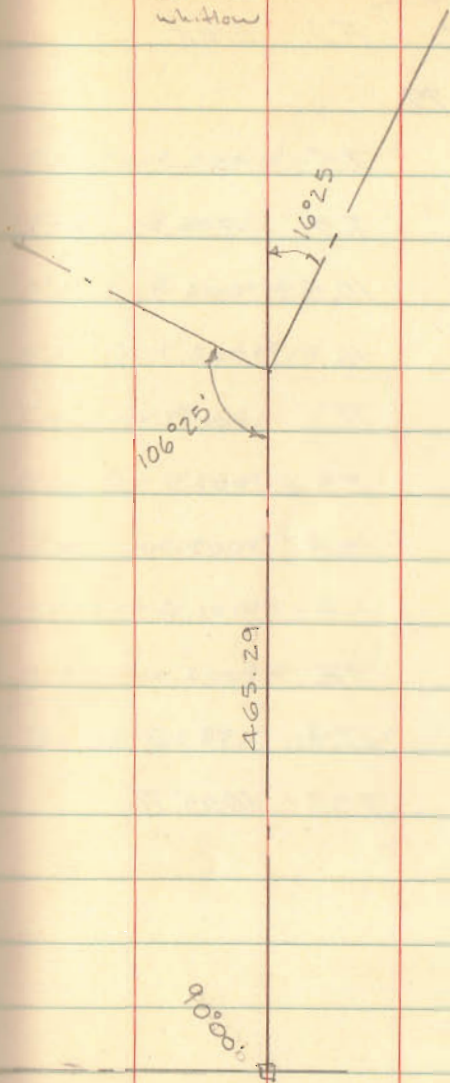


INDEXED ON MAP
3914

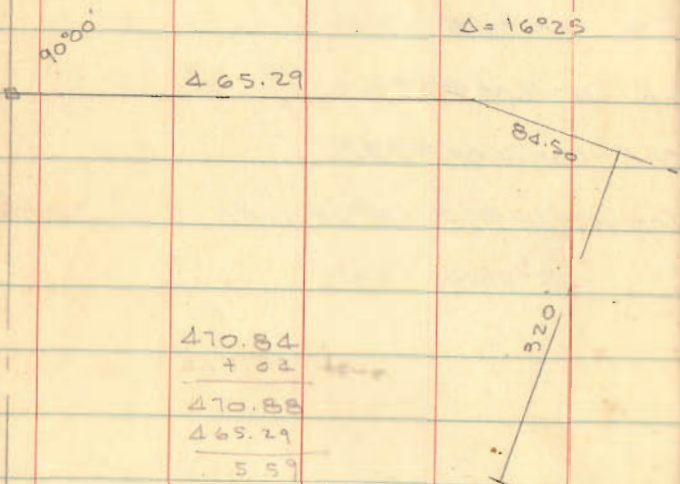
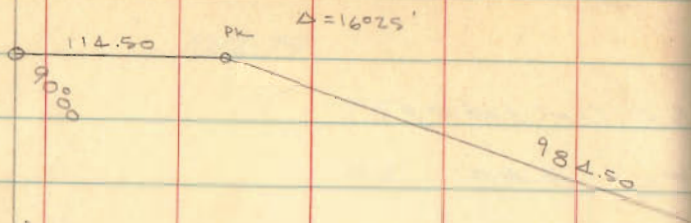
Dixon
Whitlow

3/26/66
30°

44



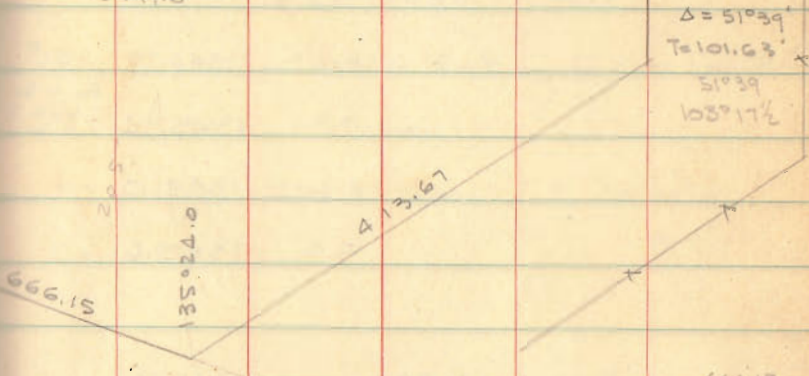
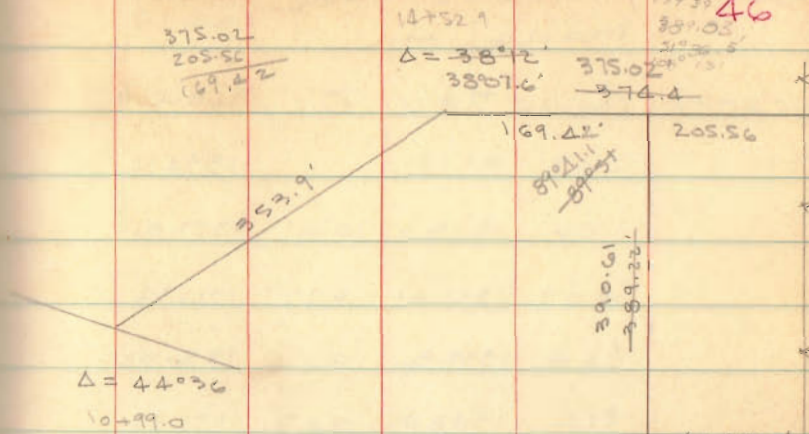
MAPLE HILL PRELIM.
STREET CENTER LINES



470.84
+ 02
470.88
465.29
559

INDEXED ON MAP
3914

Bm - TT-6-63 Elev. 1334.34



114.50
984.50
1099.00
352.9
1452.9
169.4
1622.3

507.47
465.29
42.18
465.29
88.50
549.79

179.60
44.36
135.24

666.15
84.08
582.07
666.15
622.07
43.08

622.47
582.07
40.40
413.67
102.53
311.14
310.81
38

89.49
177.20
397.03
46

14752.9
Δ = 38°2'
3887.6
375.02
374.4

169.42
205.56

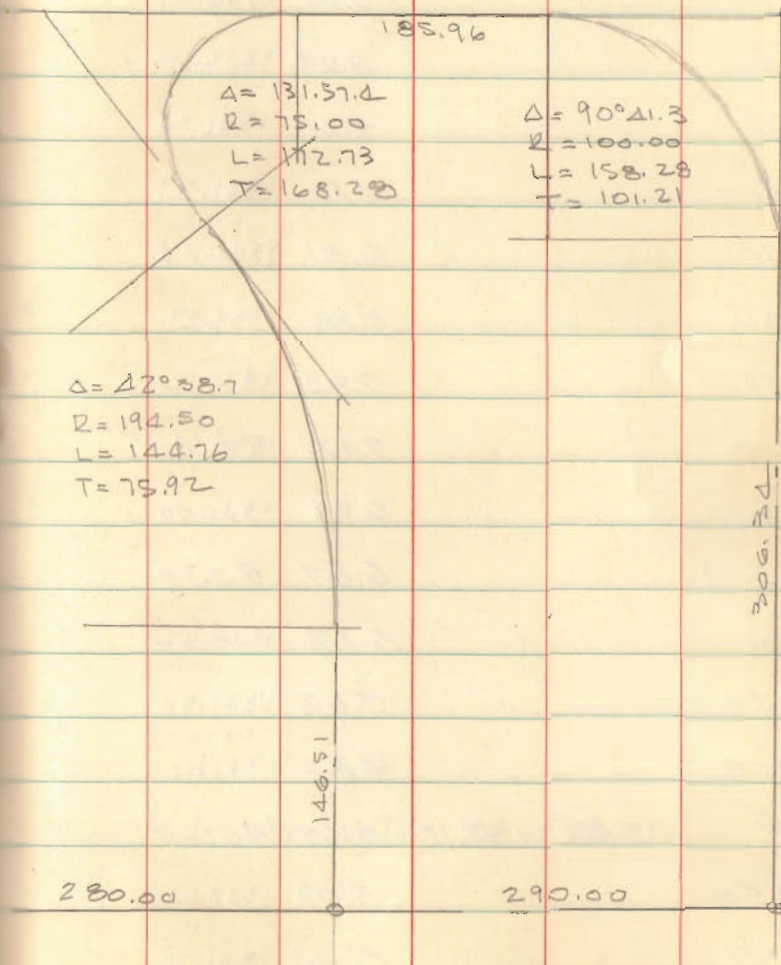
390.6
229.5
59.9

Δ = 51°39'
T = 101.63
51°39'
103°17'

RIDGEVIEW DR.

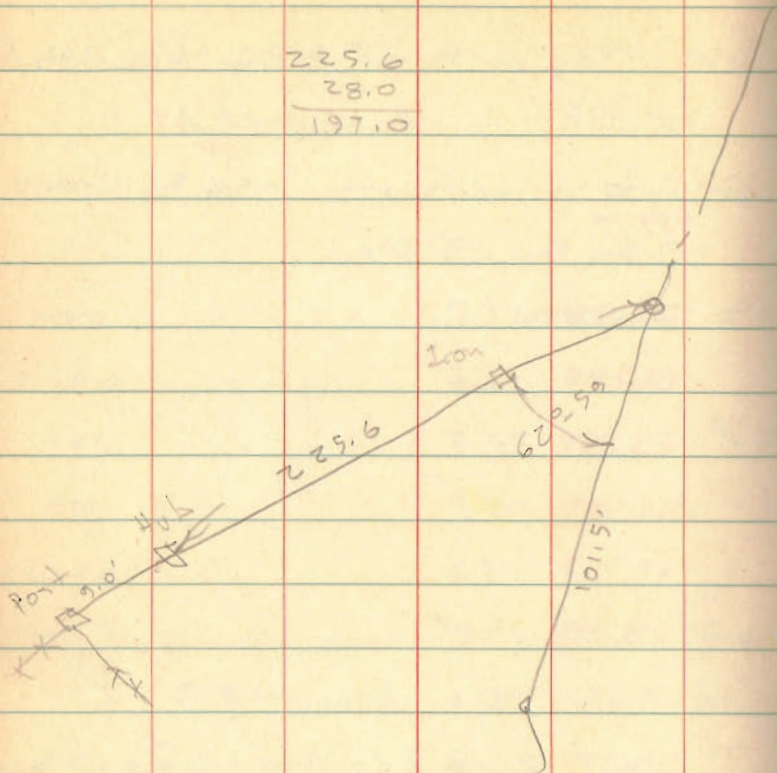
80

INDEXED ON MAP
4475



23 BELLEFONTAINE DEV. CO.

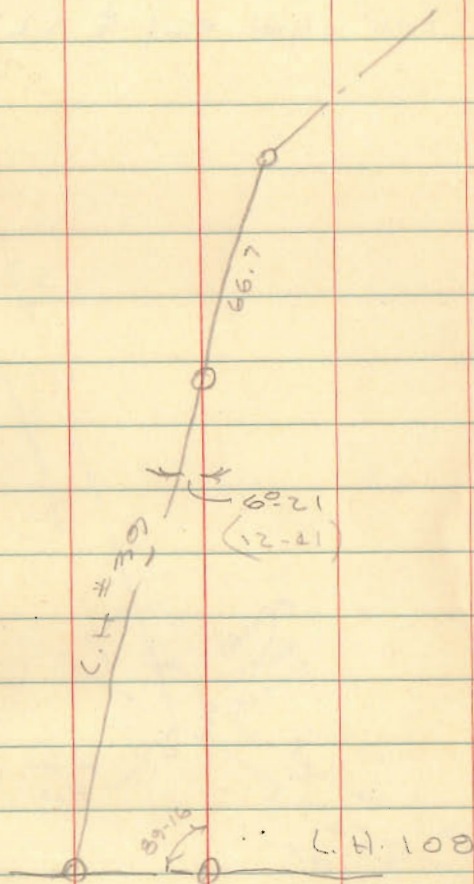
225.6
 28.0
 197.0



INDEXED ON MAP
 6172

89-16
 6-21
 95-37

179-60
 95-37
 84-23



Milroy Survey
 McArthur Trip
 U.M.S. 9904

U.M.S. 9905 Survey line

U.M.S. 9904



112-30
 112-20
 112-10
 112-00
 112-10
 112-20
 112-30

INDEXED ON MAP
 3049

Feb. 8, 1958
 15° Snow 71

