

SHARK SURVEY
ZANG TWP.

INDEX PAGE

temp corr = 0.005

Mon's find Sta. 348+00 used for E
Bolt find Sta. 362+52.5

1010	31 19.8	93032.6
73.18	211°19.7	273°32.2
	180°00.0	180°00.1
1143.18		

139°06.2	84-29.5'
319°06.2	264°25.3
180°00.0	180°00.1

170°34.3	56°33.1
350°34.3	236°33.0
180°00.0	180°00.1

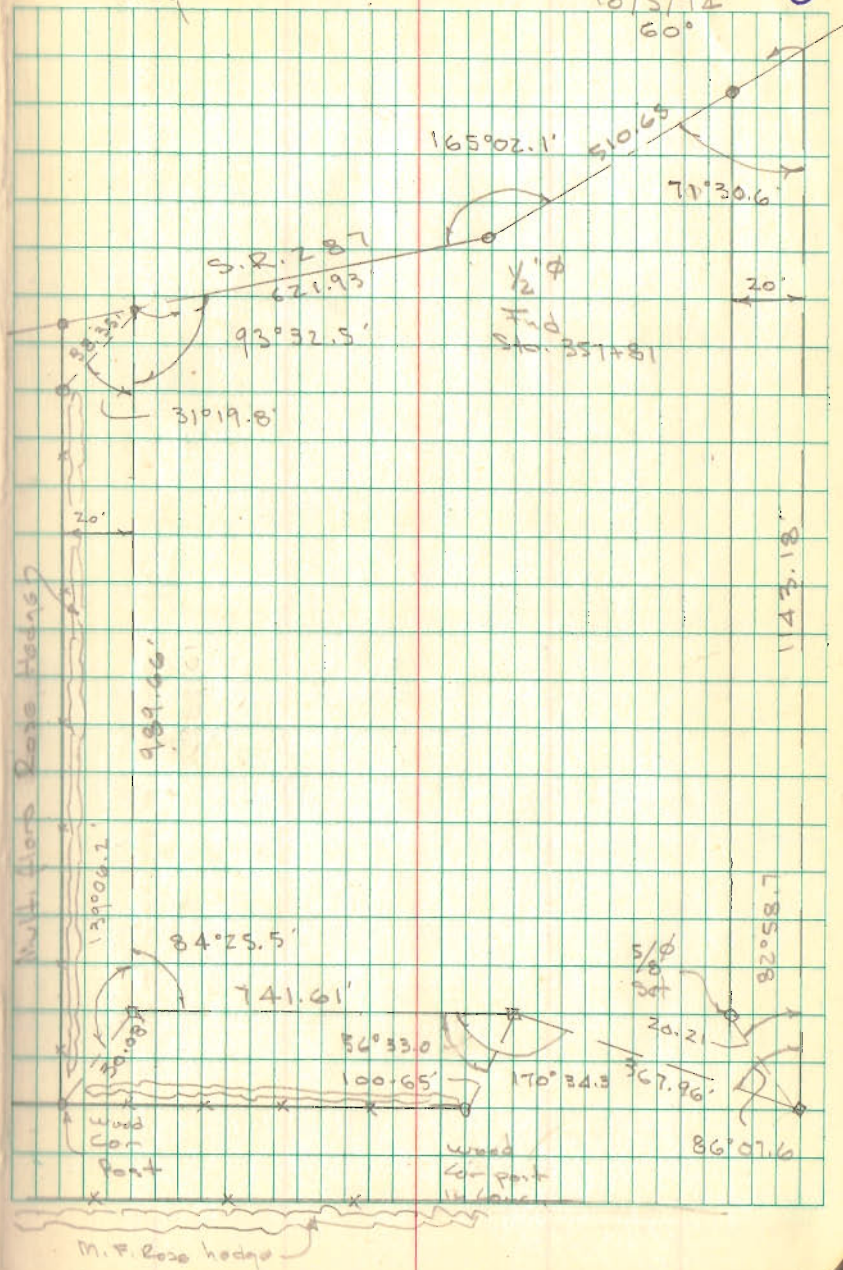
86°07.7	82°58.7
266°07.5	262°38.7
180°00.1	180°00.0

18' LANE

INDEXED ON MAP
5722

Dodson
Artis
McWedy

9/28/74
Rain
10/5/74
60°



Lot 3000

BELLEFONTAINE

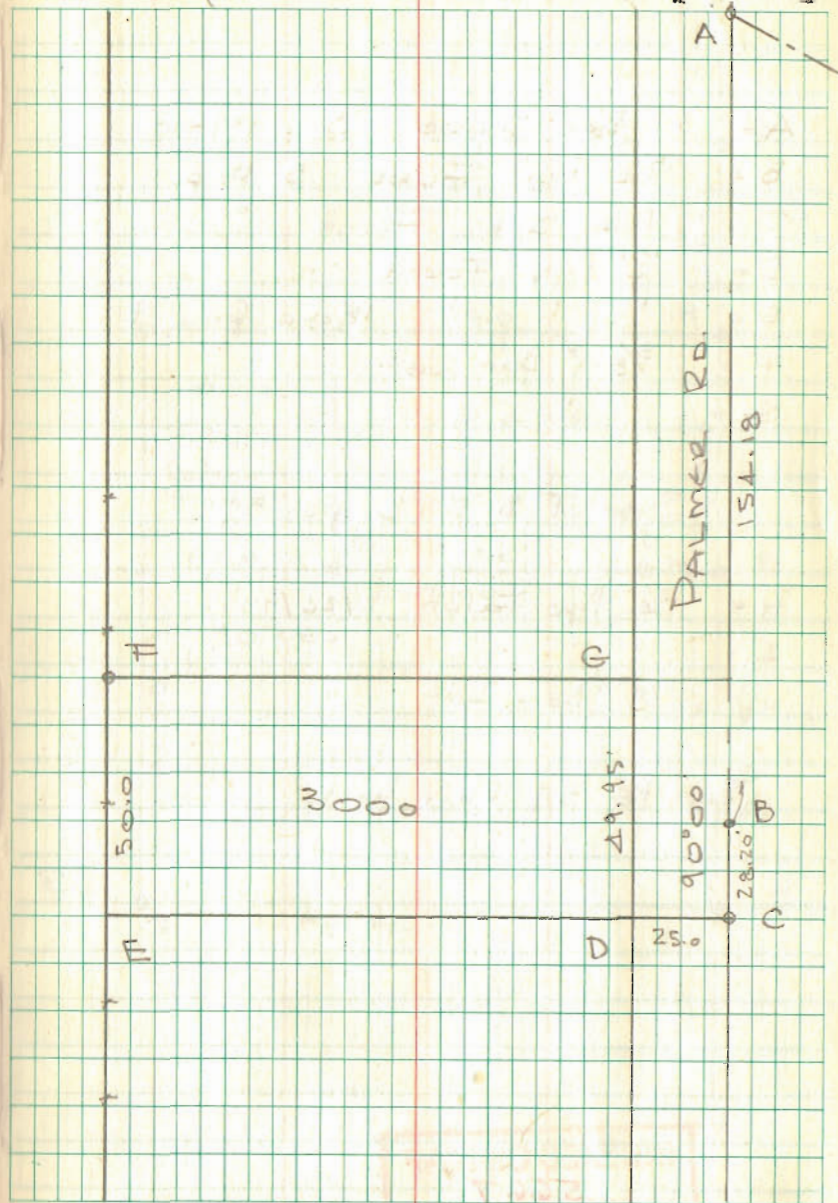
- A = Mob. & Palmer & Seminole
- B = P-K nail found See Bk 20/16
- C = P-K nail Set
- D = Chisel mark @ E. edge of walk found
- E = Steel fence post found
- F = $\frac{3}{4}$ " pipe found in W. side of 8" tree
- G = Chisel Mark found @ E. edge of walk

Plot indicates that "C" should be 181.75 from A - found R from previous surveys to be 182.38 from "A" - used previous survey

INDEXED ON MAP
6708

Dodson
Artis
McLurdy

9/23/72
Cool



DUFF SURVEY
STOKES TOWNSHIP

- A = 1" Bar Found Stb. 199+10
- B = 3/4" Pipe Found 3" Deep
- C = R.R. Spk. Found "
- D = 1/2" Pipe Found
- E = " " " 180.0 from B
- F = 5/8" Bar Set
- G = " " " "

See F.B. 572 pg. 39

- H = 3/4" Pipe Found 2/26/77
- I = " " " "
- J = 5/8" Bar Set "

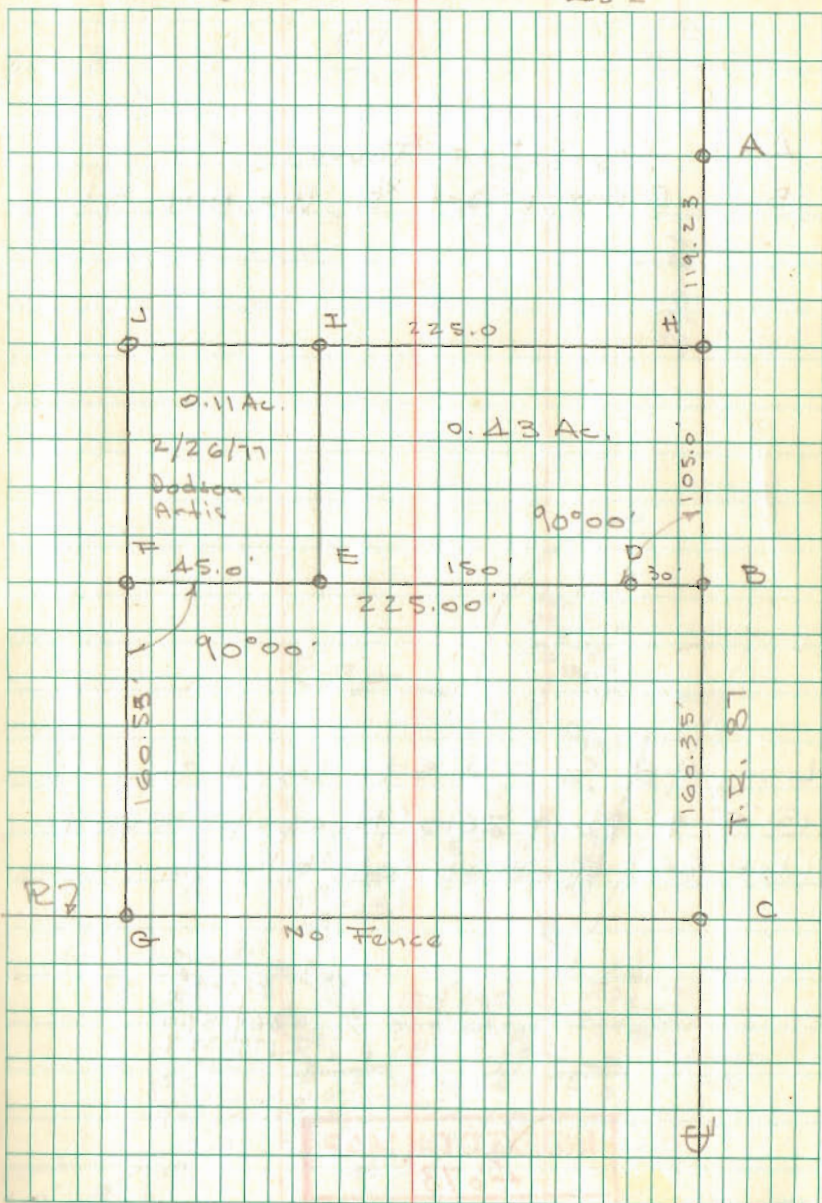
See Pg. 37 this book

INDEXED ON MAP
5667

Dodson
McLurdy

10/19/74
Cool
15°E

2



DUFF TRAINER PARK

A = Iron Bar Found
 B = R.R. 3pk St & WALNUT St

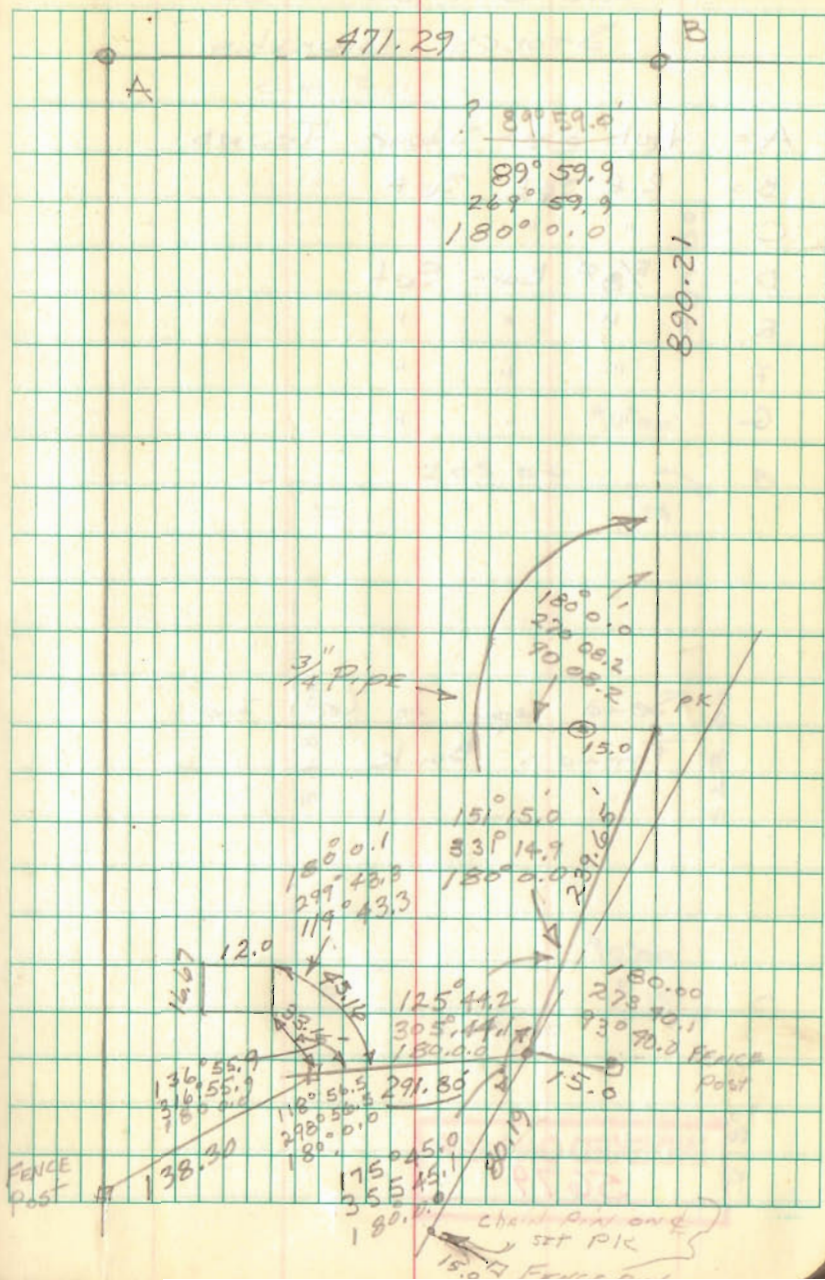
Line A-B & T.R. 87 used Iron
 @ "A" & point 20.0' N. of fence post
 (lot 6-) @ N.W. Cor. Elm for line

89° 59.1
 269° 59.6
 179° 59.9

INDEXED ON MAP
 4673

TEMP 7.005 10/25/70

3



ANDREWS SURVEY
 Sec 8 T-6S R-8E
 Stokes Township

- A = Hub over Stone Found
- B = R.R. Spk. Set
- C = " " "
- D = $\frac{5}{8}$ " Bar Set
- E = " " "
- F = " " "
- G = " " "

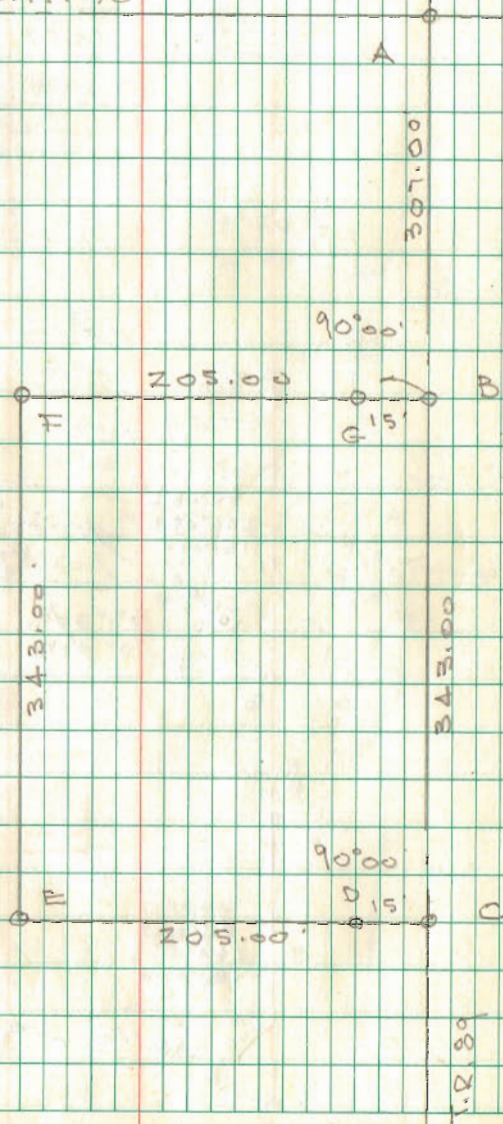
Send copy to Cecil Iron
 Farmers Bank

INDEXED ON MAP
 5679

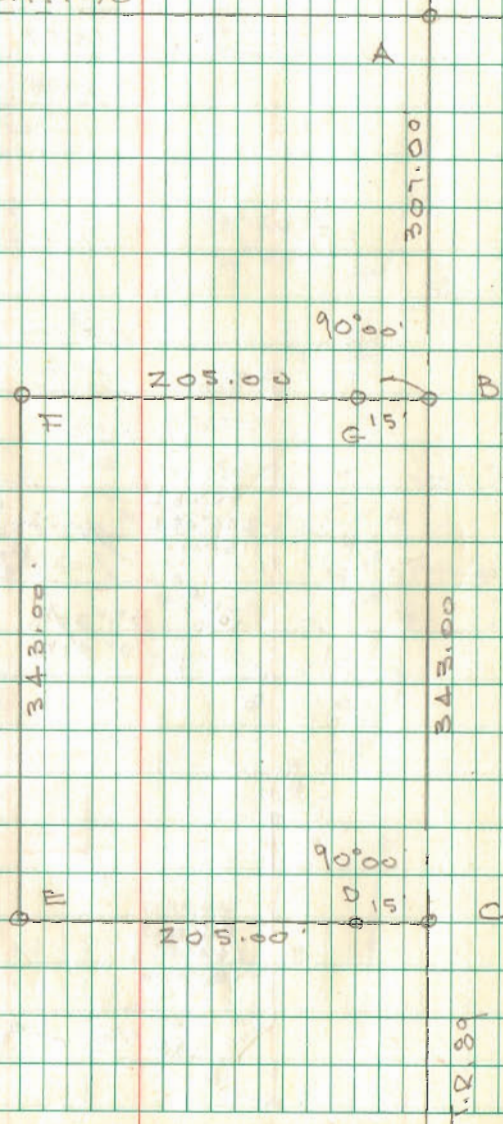
Dodson
 Antis
 McCurdy

11/2/74
 65°
 cloudy

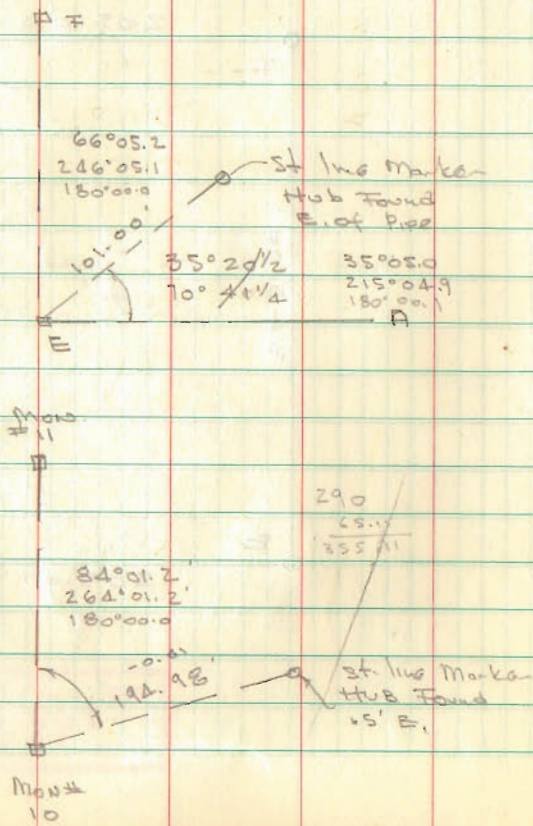
C.H. 90



C.H. 90



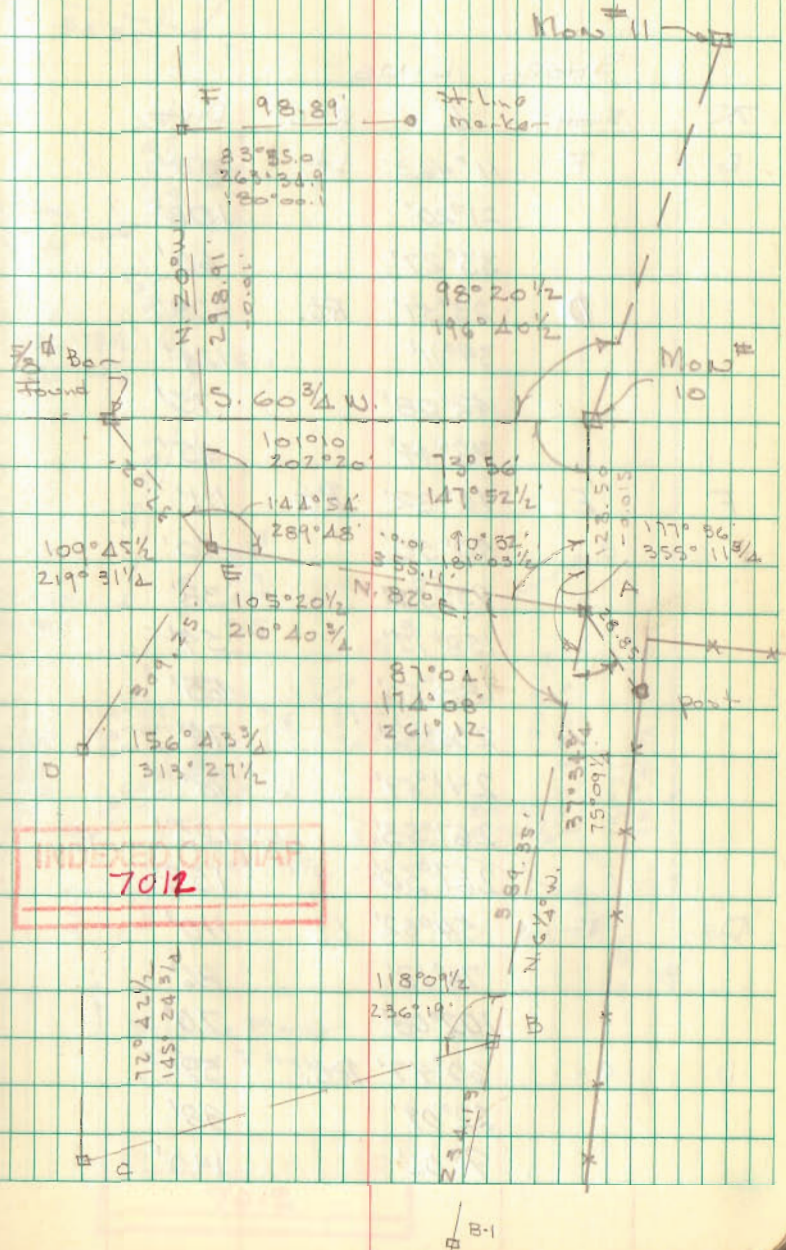
O'Connor Survey
Rabson Line



Dodson
T. Hombie

11/9/70
70°
Nice Day

27



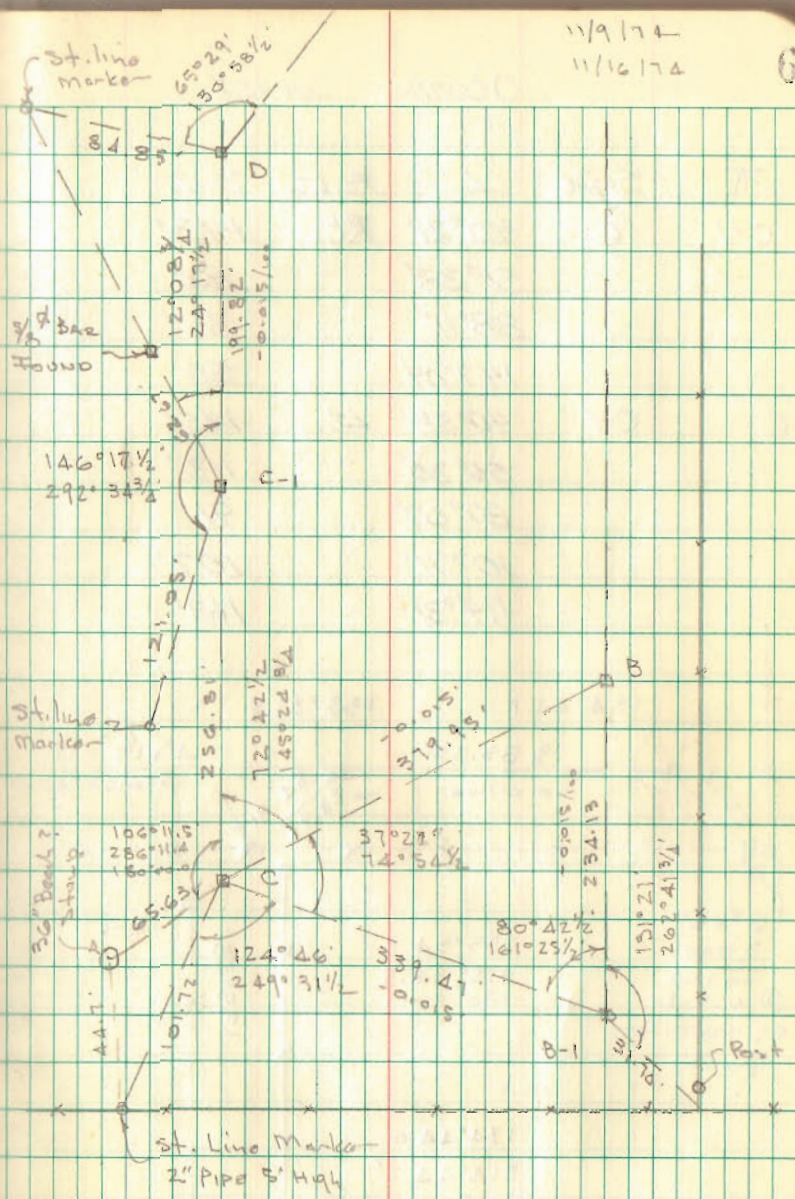
O'Connor Count

SHORE LINE

K	SIGHT	L	R-L	Dist
E	F	11°46.3'	Lt.	158'
		21°20'		106'
		33°27'		60'
D		23°51'	Rt.	208'
		34°11'		124'
		42°08'		75'
		78°44'		45'
F	E	16°32'	Rt.	111'
		50°50'		50'
		95°52'		38'
		158°17'		59'
		188°50'		65'
		206°32'		74'
		241°49'		98'
		267°53'		125'
		267°50'		153'
D	E	54°32'	Lt.	110'
		76°12'		86'
		102°08'		70'
D	C-1	60°47'	Rt.	59'
		22°09'		88'
		9°06'		140'

11/9/74
11/16/74

6



INDEXED ON MAP
7012

GROVES SURVEY

A Stone Found @ W. side of Cen. post

55°54.7
235°54.2
180°00.1

99.00

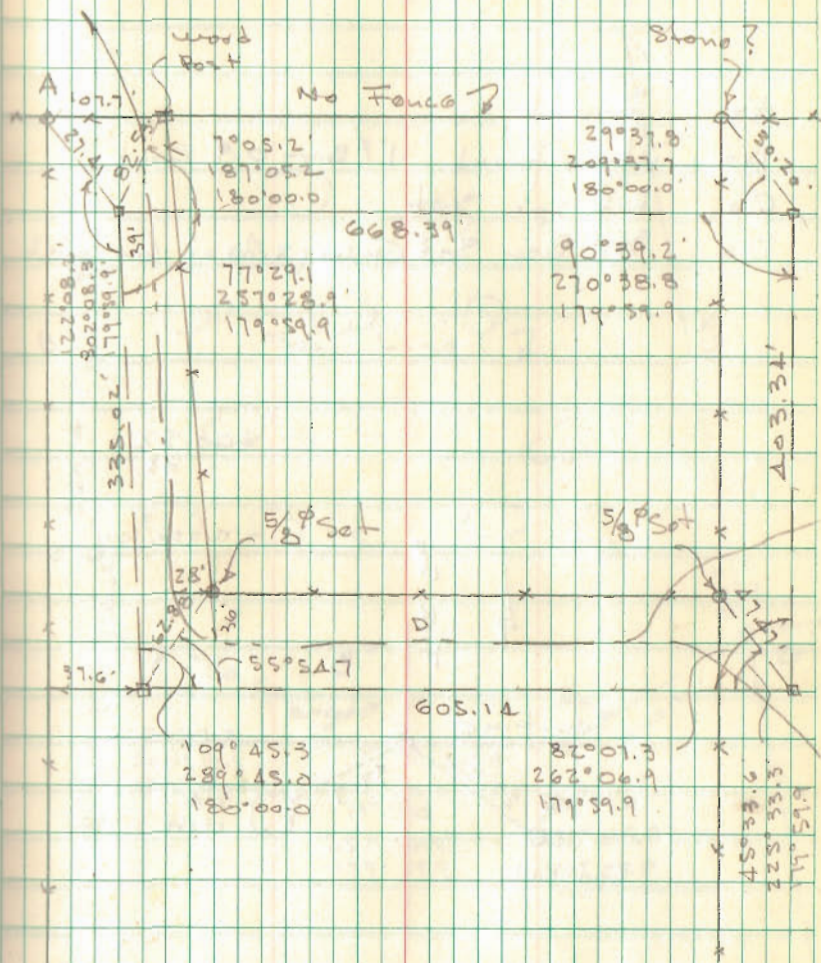
INDEXED ON MAP

4810

Dodson
Artis
McCurdy

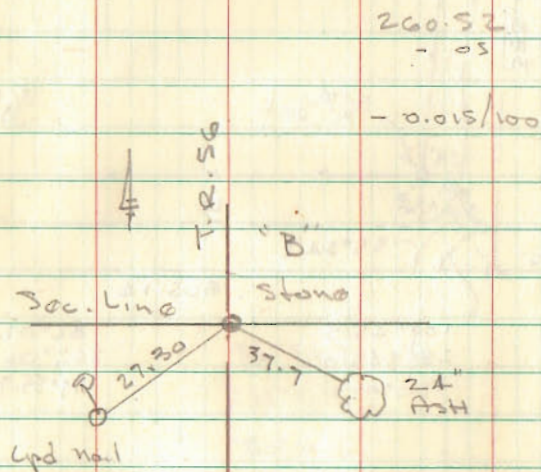
2/19/75
50'

12



GROVES SURVEY
HARRISON TWP

- A = Stone
- B = Stone found 1" Bar 0.9' East
- C = R.R. 2x2 Set
- D = 5/8" Bar Set @ W. side of Cor. post



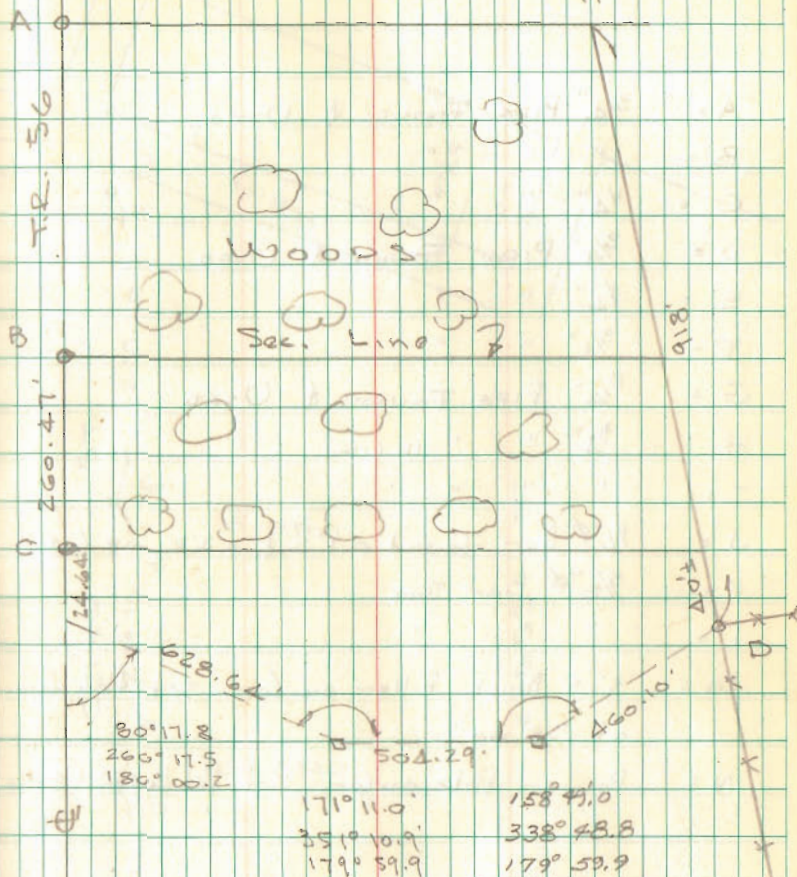
260.52
- 05
- 0.015/100

INDEXED ON MAP
5748

Dodson
Artis
McCurdy

4/12/75

18



SURVEY OF LOTS 1029-1030
 RUSSELLS POINT OHIO

- A = 3/4" PIPE FOUND & USED
- B = " " "
- C = 1/4" " "
- D = 3/4" PIPE FOUND & USED
- E = 1/2" " "
- F = 3/4" " "
- G = 3/4" PIPE FOUND & USED
- H = 3/4" " " IN CONC.
- I = " " "
- J = 1/2" ϕ BAR FOUND 0.1'S. & 0.4'E. OF COR.
- K = 5/8" ϕ BAR SET
- L = " " "
- M = 3'x3' BRICK PILLAR ON COR. SET HD HUB
 AT 38.00'
- N = POWER POLE ON COR. SET HD HUB @ 38.00'

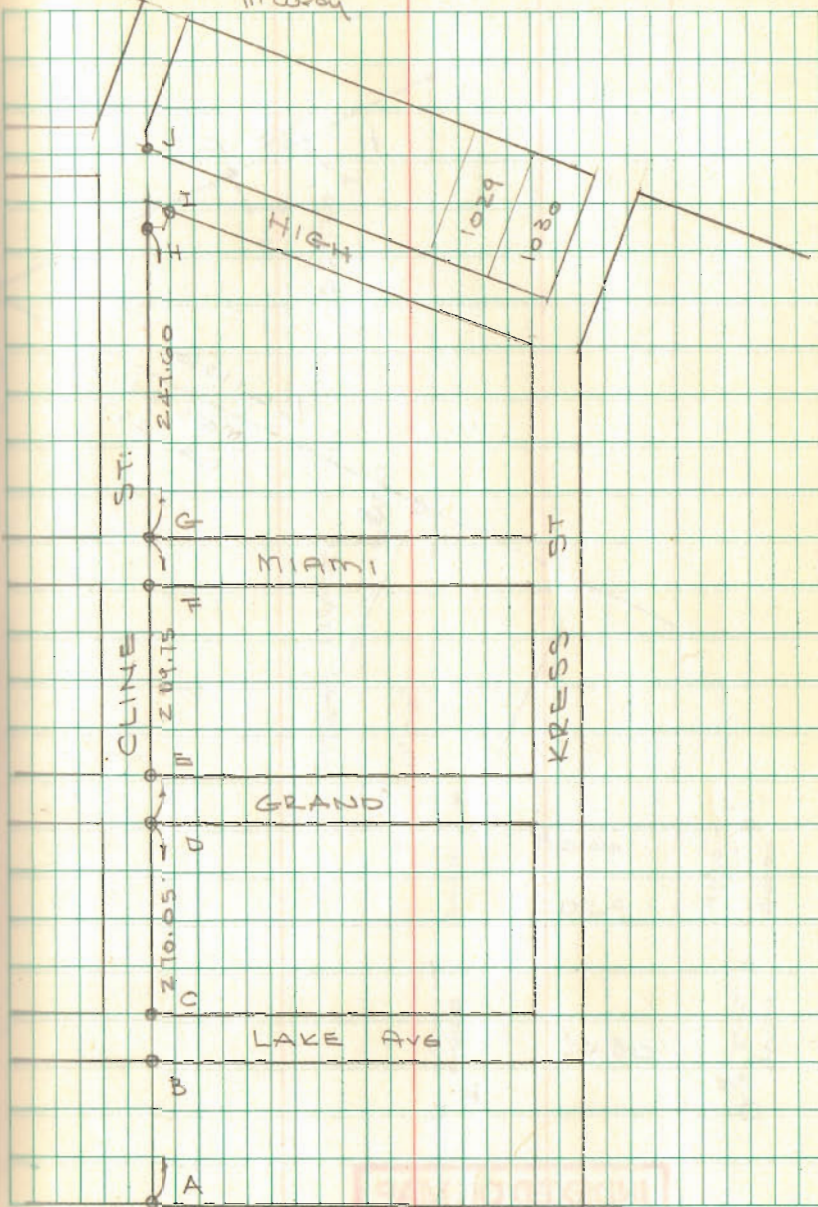
Note: Searched for lot Cor's. on Orchard Isl
 Rd. & High St. - Found Nothing
 Found Nothing on Kress St.

INDEXED ON MAP
 7499

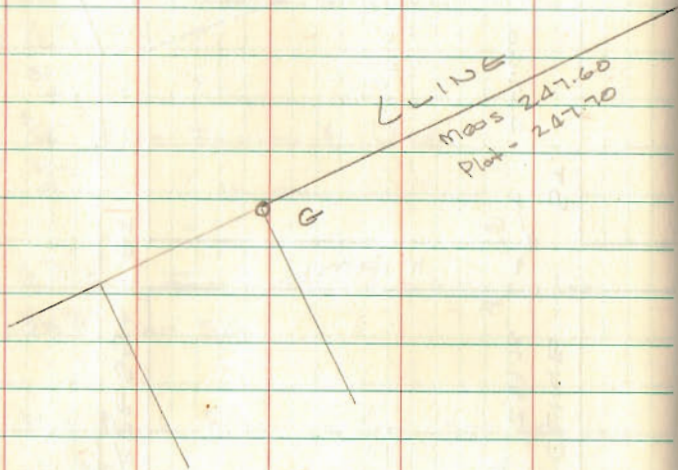
Dodson
 Artis
 McLeary

March 29, 1975

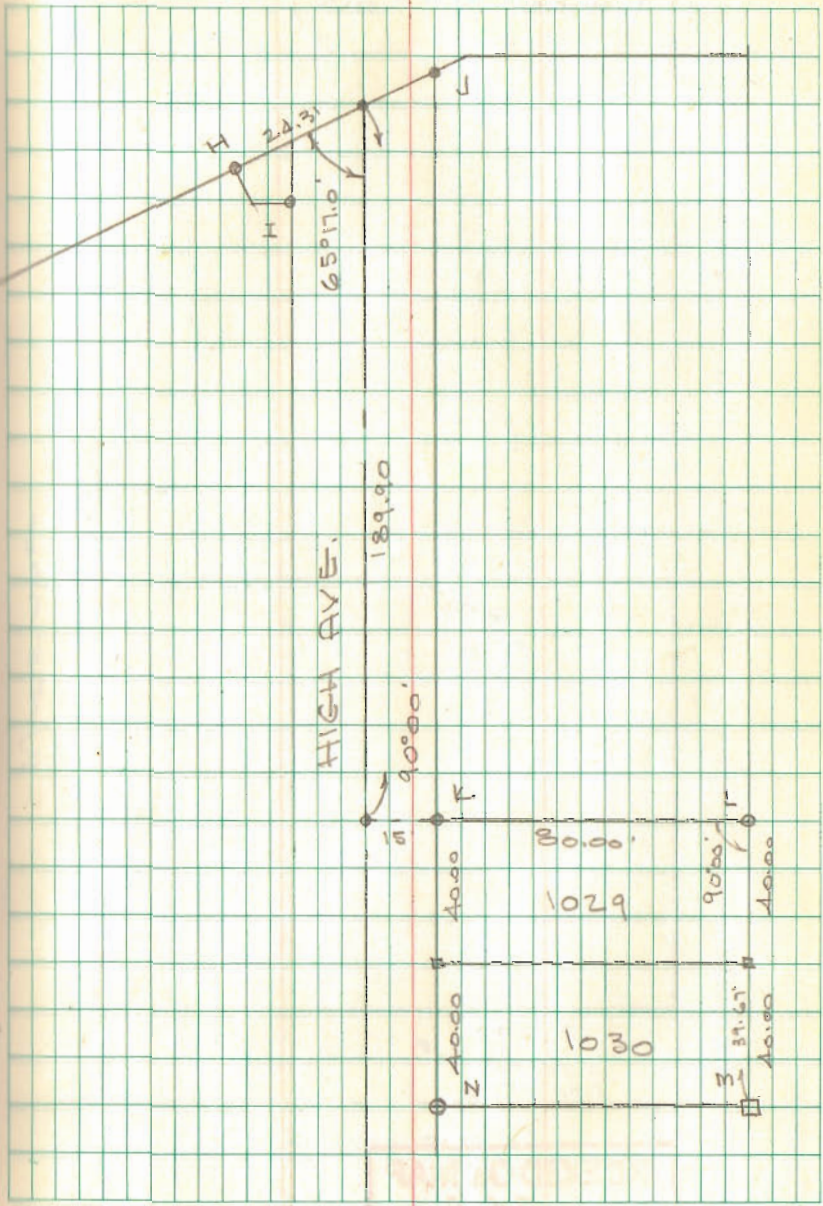
14



LOTS 1029-1030 Cont'd.

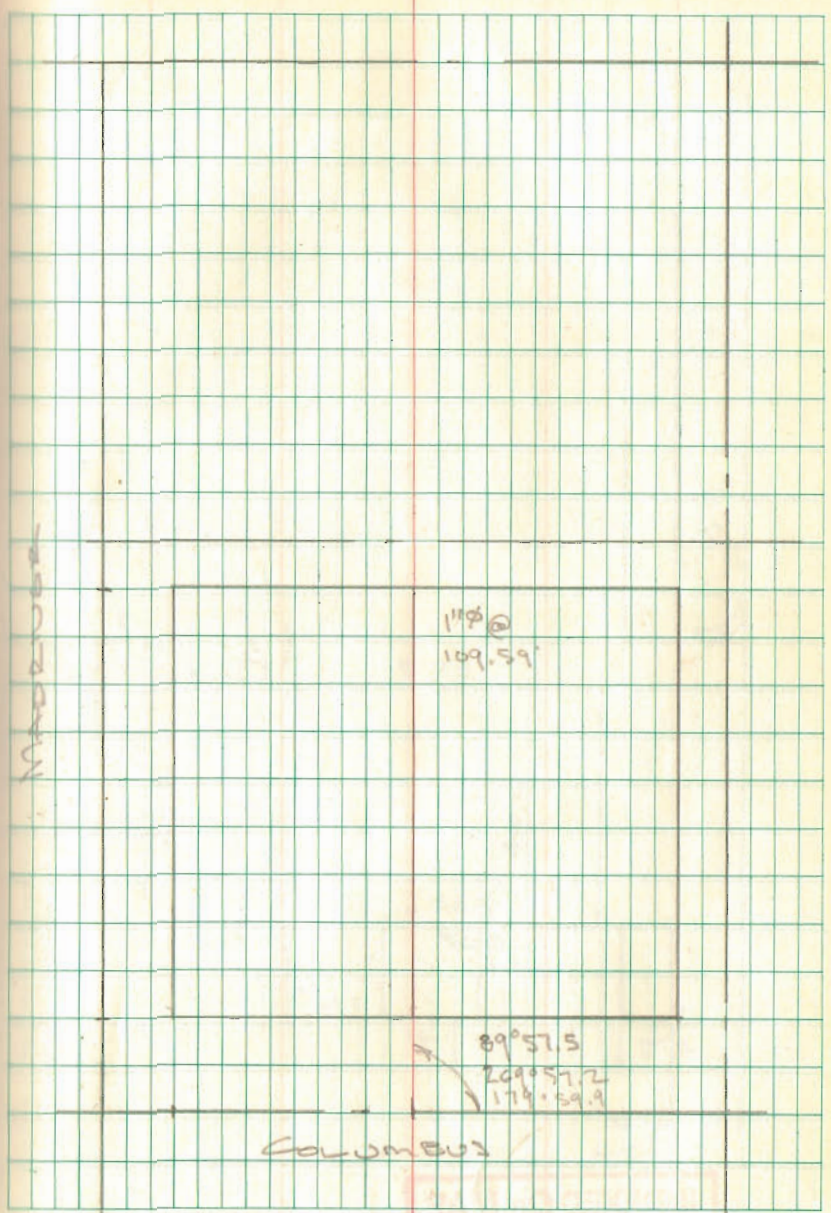


INDEXED ON MAP
7499



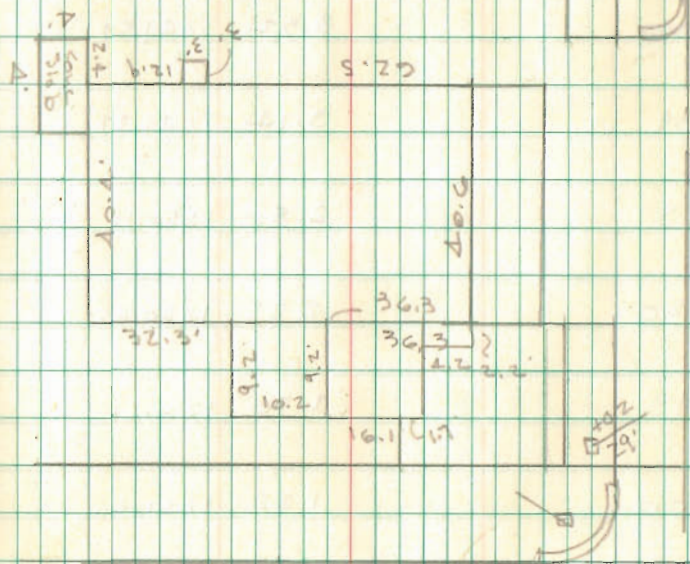
Bellefontaine Federal Savings
(Fire Station)

16



INDEXED ON MAP
2468

INDEXED ON MAP
2468



INDEXED ON MAP

2768

SNAPP SURVEY
STOKES TWP

SEG F.B. 3 PG. 29

SEG F.B. 20 PG. 9

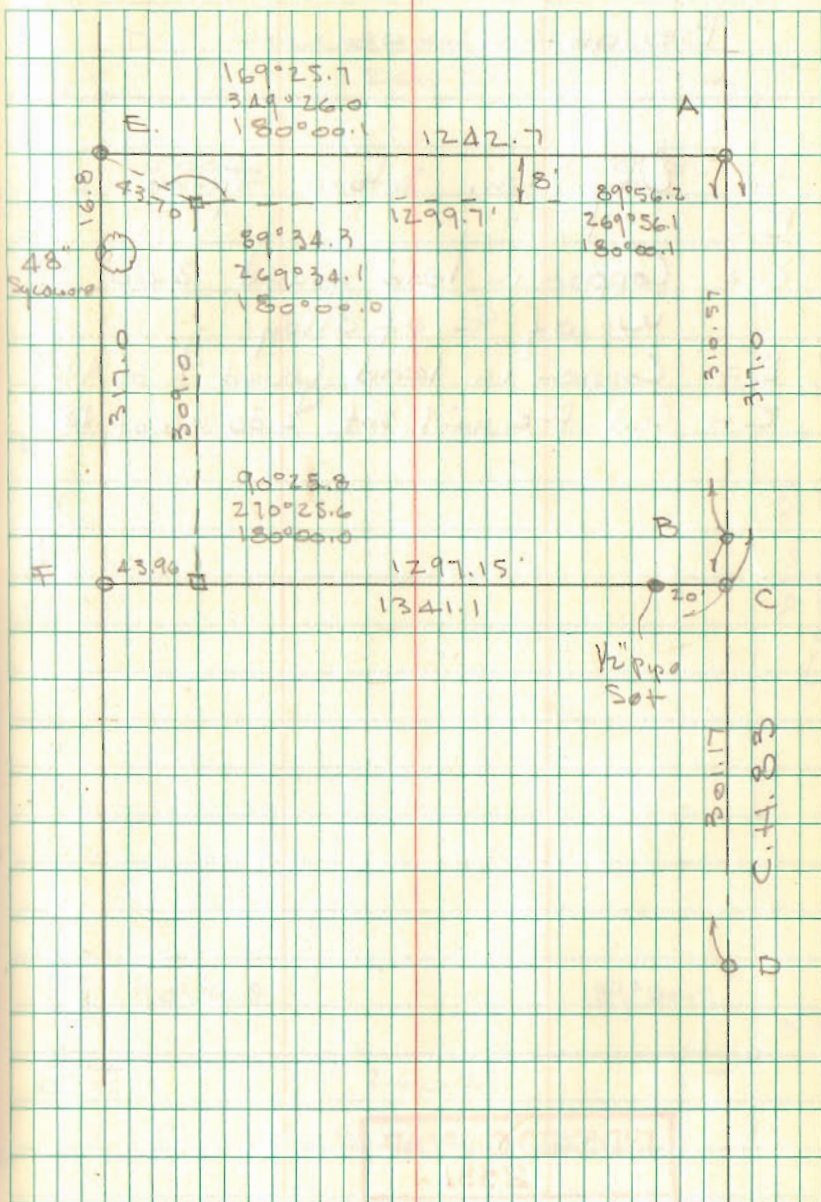
- A = R.R. Spk Found
- B = $\frac{5}{8}$ " ϕ Bar Found
- C = R.R. Spk Set
- D = R.R. Spk Found
- E = $\frac{1}{2}$ " Pipe Found
- F = 1" Pipe Set in fence

INDEXED ON MAP
3158

Dodson
Artis

7/12/75

23



BELLEFONTAINE DEVELOPMENT Co
LOTS 29-30-31-32

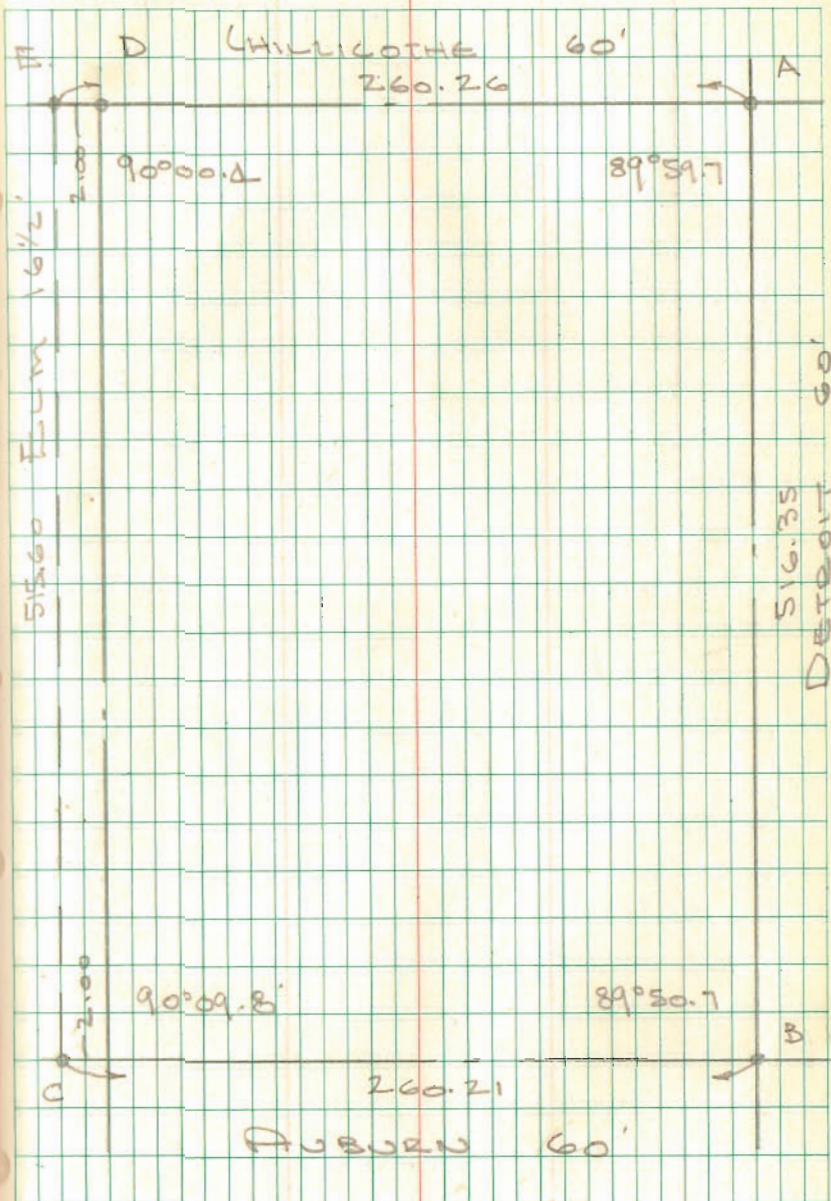
BELLEFONTAINE

- A = City Mon. Stone Found
B = " " " " "
C = Copper in lead found 2.00'
w. of E of alley
D = Copper in lead found E of Alley
E = Lpd P-K nail set 2.00' w. of D

INDEXED ON MAP
2531

Dodson
Artis

OCT. 11/1973
590 24



Davidson Survey
Miami Township

- A = Wood Cor post in cone
- B = Remains of Wood Cor post in cone
- C = $\frac{5}{8}$ " ϕ Set S. side of Cor post

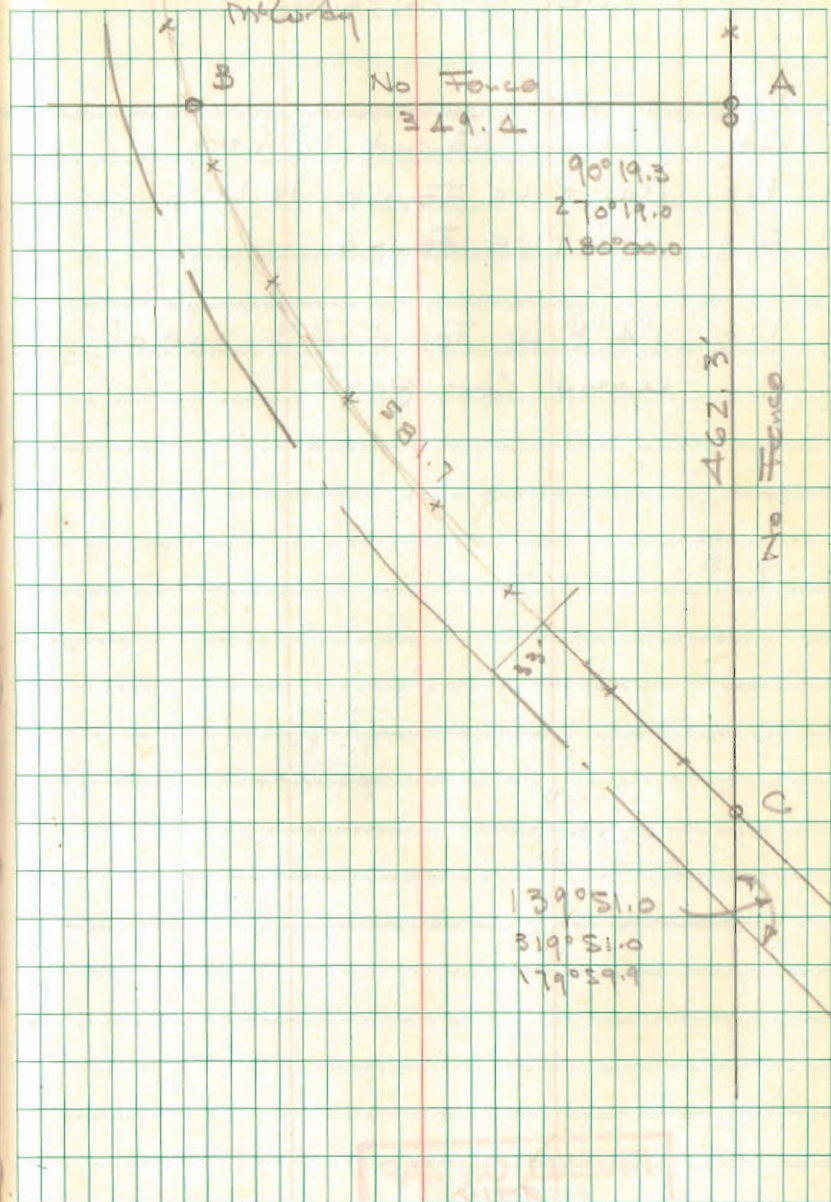
Set $\frac{5}{8}$ " ϕ Bar in R/W line @ B
1.0' \pm W. of Cor. post.

INDEXED ON MAP
5901

Dodson
Art's
McCurdy

4/3/76

27



INDEXED ON MAP
5901

American Legion Topo
Bellefontaine

- A = 1" Bar Found 12" Deep
- B = 1 1/4" Pipe Found 12" Deep
- C = 1 1/4" Pipe Found
- D = 1 1/4" Pipe Found @ S. side of wood cor post

179 60
90 51

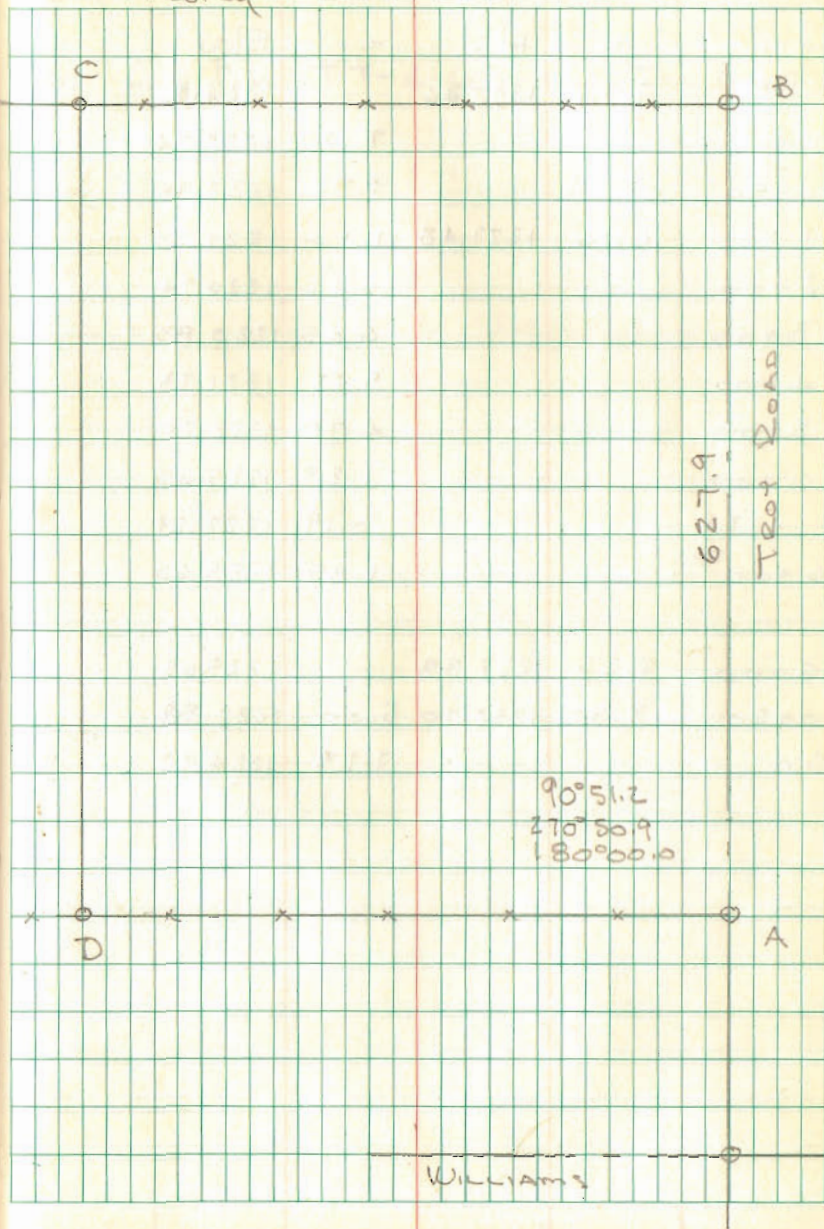
89 09

INDEXED ON MAP
4719

Dodson
Artis
McLurdy

4/10/76

28



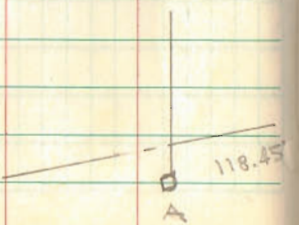
VARNER SURVEY
V.M.S. 9951
RICHLAND TWP

- A = 3/4" ϕ Found 1.5' Lt of G
- B = 1" ϕ Found 0.5 " " "
- C = R.R. Spk's Lot
- D = 5/8" ϕ BARS SET

89 60
88 55

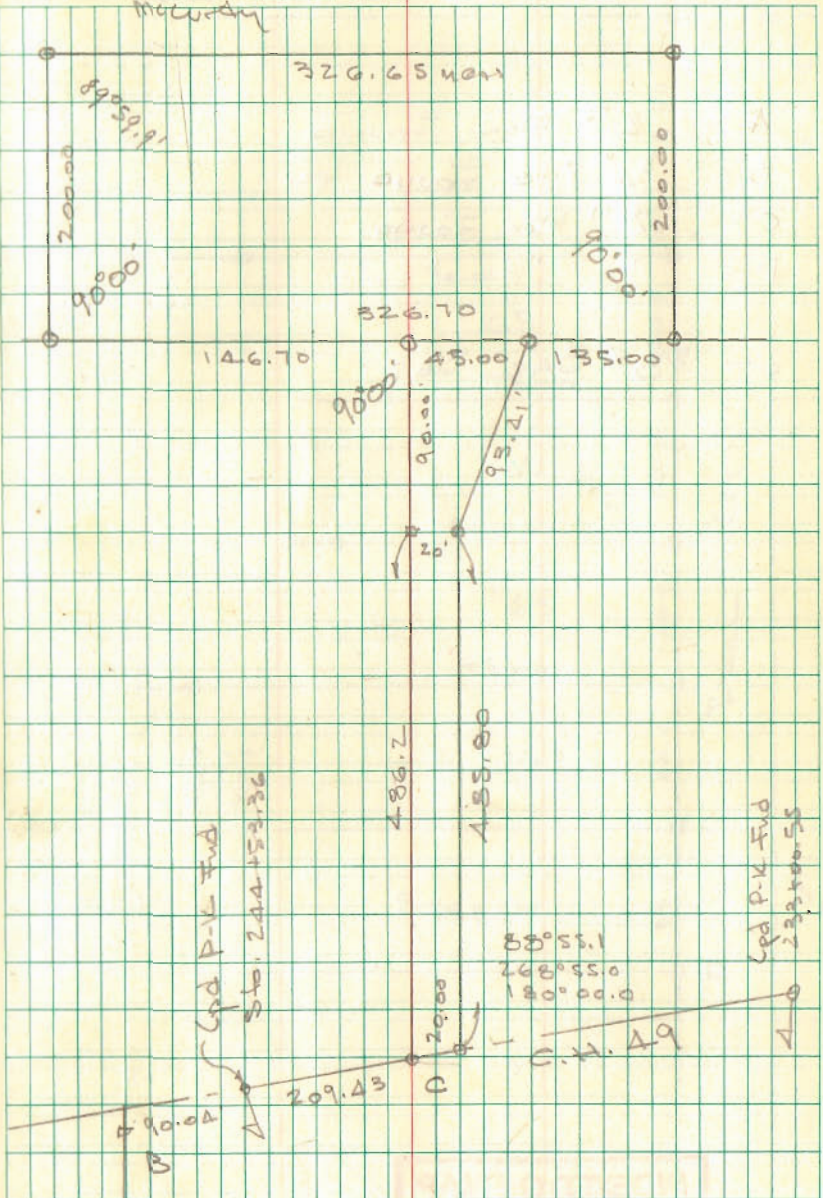
1 05

INDEXED ON MAP
5904



Dodson
Artis
McCurdy

411776 34



INDEXED ON MAP
5904

LOT 63-64-65
ORCHARD ISLAND

A = 2" Mon. FOUND.

B = 3/4" PIPE FOUND OK

C = 2" Mon FOUND

D = " " "

O = 5/8" BAR SET

100.0
17.5
82.5

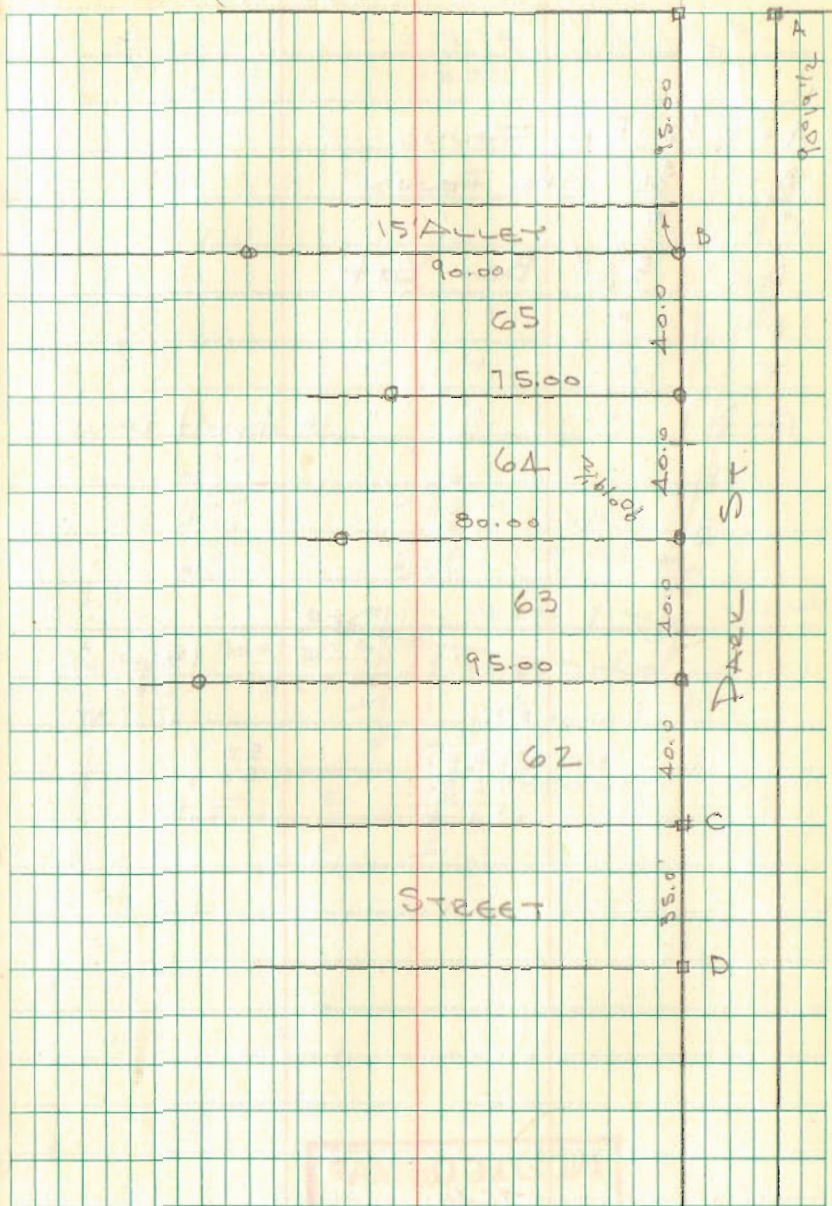
INDEXED ON MAP

2408

Dodson
Art's
McLurdy

8/14/76

35



INDEXED ON MAP
2408

Duff Survey
 Sec 22 T-6S R-8E
 Stokes Township

- A = 1" ϕ Bar Found Sta. 199 +10
- B = 3/4" Pipe Found
- C = " "
- D = R.R. spike set
- E = 5/8" ϕ Bar set
- F = " " " "
- G = " " " " (Removed)
- H = " " " "
- I = R.R. spike set

Meas 20.0 feet from lot corners of
 Lake side Allot. for Φ east of "A"
 lined up "OK" - R.R. spike @ Φ tie st
 & Φ of Walnut St. set by state Hwy Det
 does not line up (did not use spike).

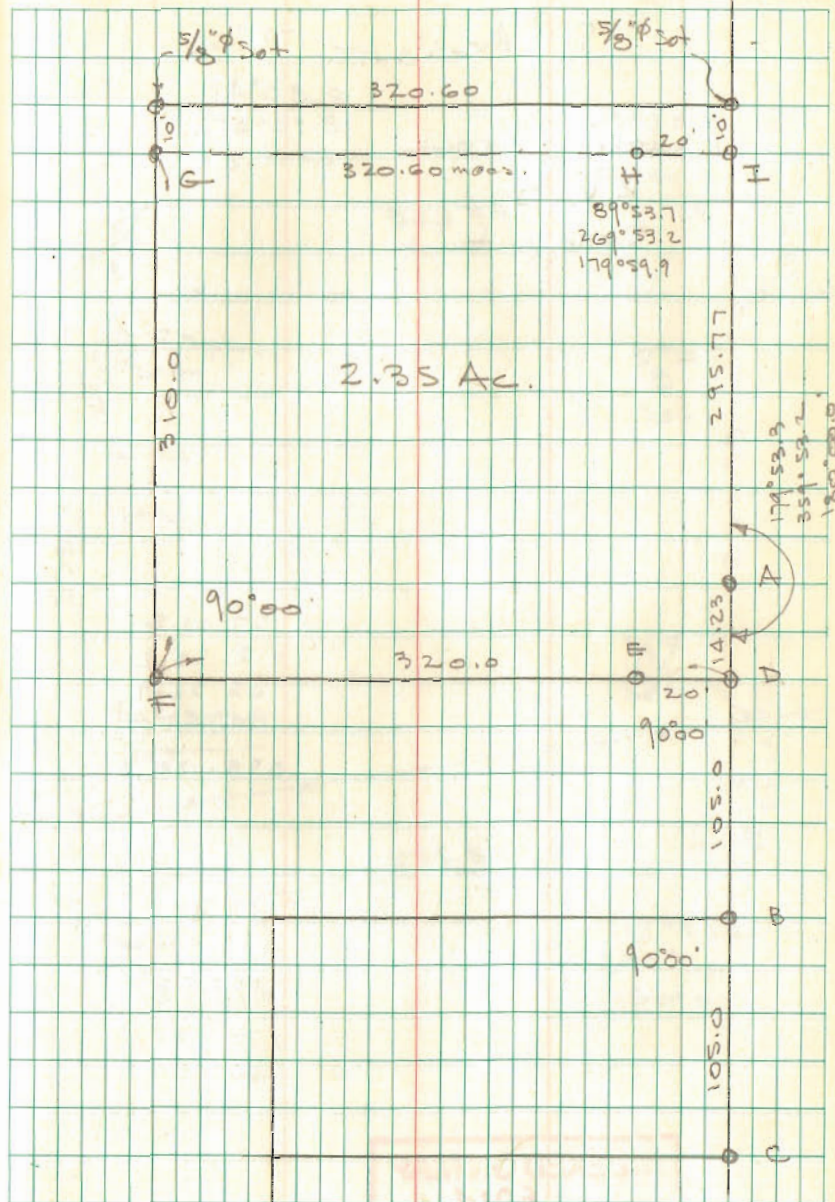
See Pg. 2, this book.

INDEXED ON MAP
 5667

Dutton
 Artis

Feb. 26, 1977
 30°

37



Hurley Survey

McArthur Trp

Gary Krock

R.R. B

Dellefontaine

$67^{\circ}01.8$
 $112^{\circ}58.2$
 $83^{\circ}52.9$
 $94^{\circ}07.9$

 $358-120.8$

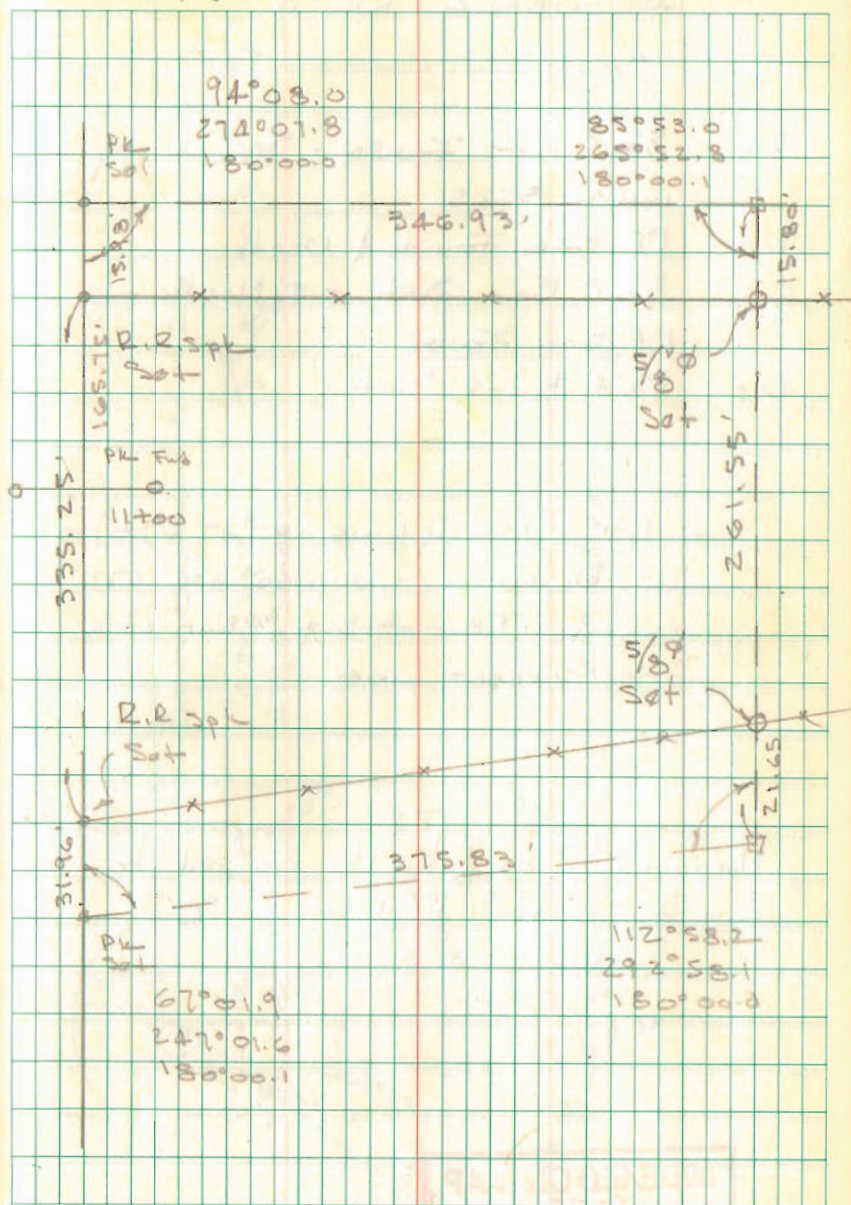
179.60
 $67^{\circ}01.8$

 $112^{\circ}58.2$

INDEXED ON MAP
6014

Dodson
Artis

3/26/77 38



Lot 278 - 279
 AVOUDALE No. 3

- A = 5/8" ϕ Bars Found - See Survey index 5925
- B = 1" ϕ Bar Found & Used
- C = 5/8" ϕ Bar Set 0.9' North of 1" ϕ Bar Found
- D = 5/8" ϕ Bars Set

LINE B-C (NORTH LINE OF LOT 278) IS IN DISPUTE - OWNER OF 277 CLAIMS 1" ϕ Bar at B & 1" ϕ Bar at C ARE CORRECT LINE -

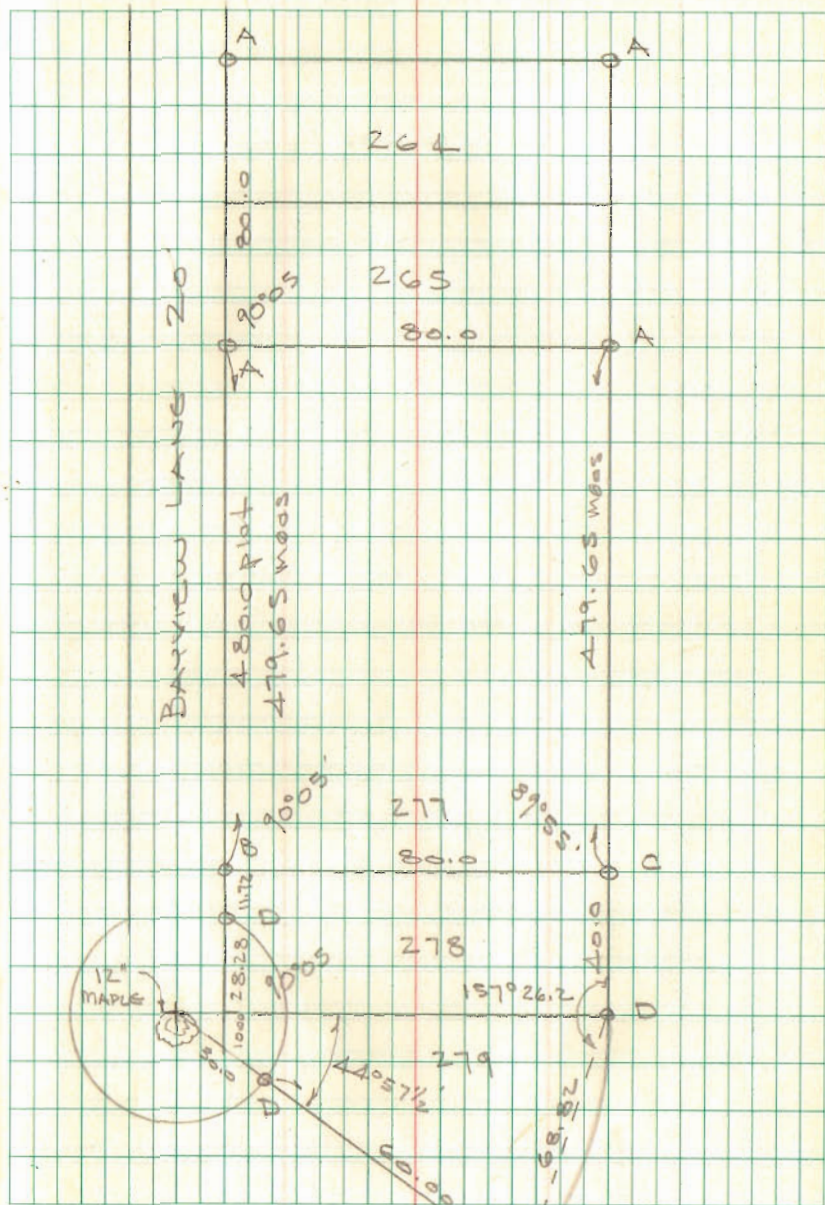
NORTH LINE OF LOT 278 RAISED TO CONFORM TO 1" ϕ BAR @ "C"
 D.L.D.

INDEXED ON MAP
 6022

Dodson
 Antis

3/26/77
 65°±

39



KNIFE SURVEY
STOKES TWP

R.R. 1
LEWISTOWN

2165.9
- .4

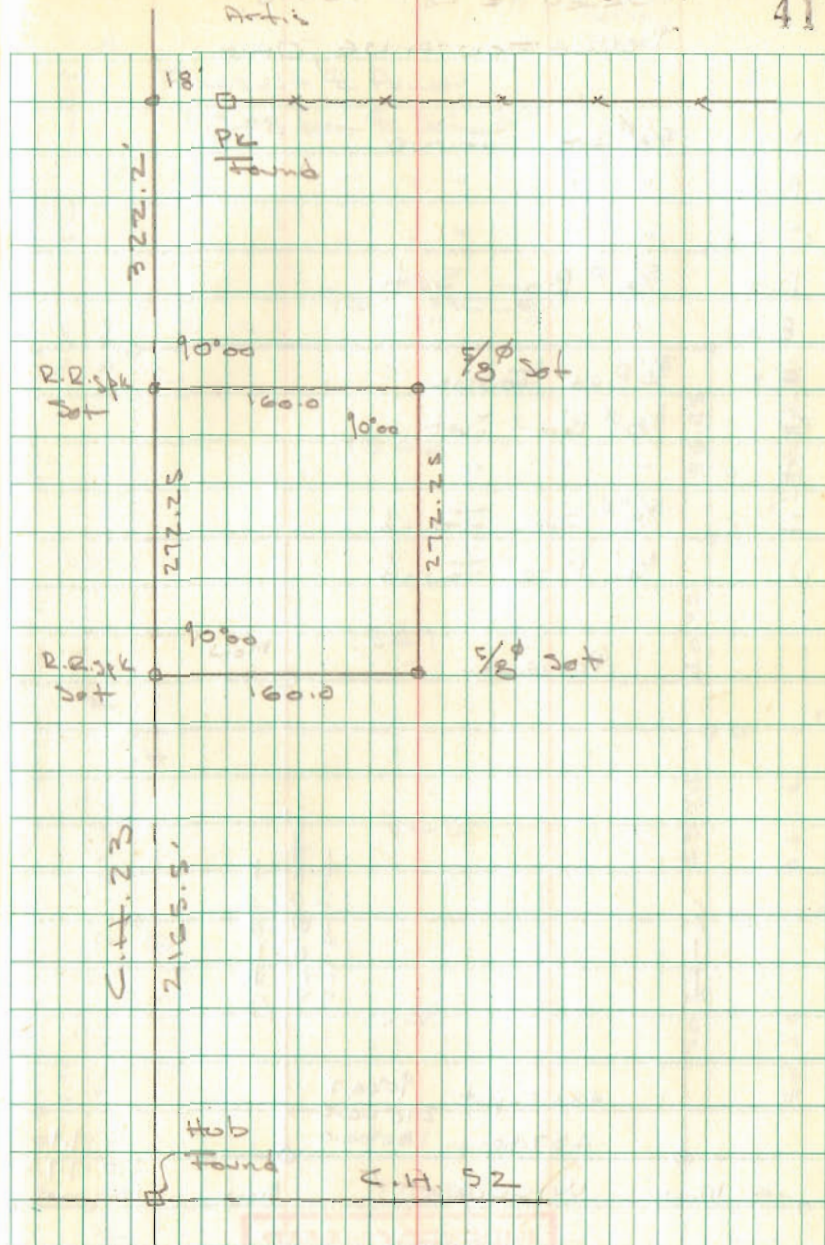
21
22
22

INDEXED ON MAP
6061

Dodson
Archie

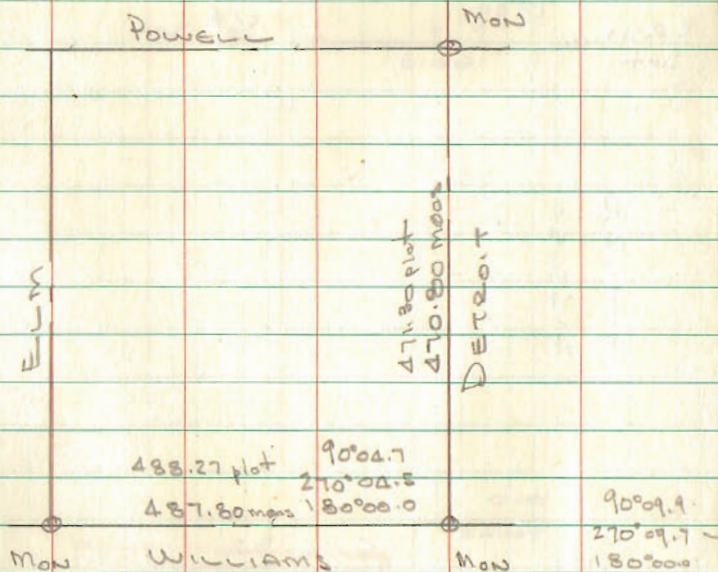
April 9, 1977

41



SURVEY OF LOT 1548
BELLEFONTAINE, OHIO

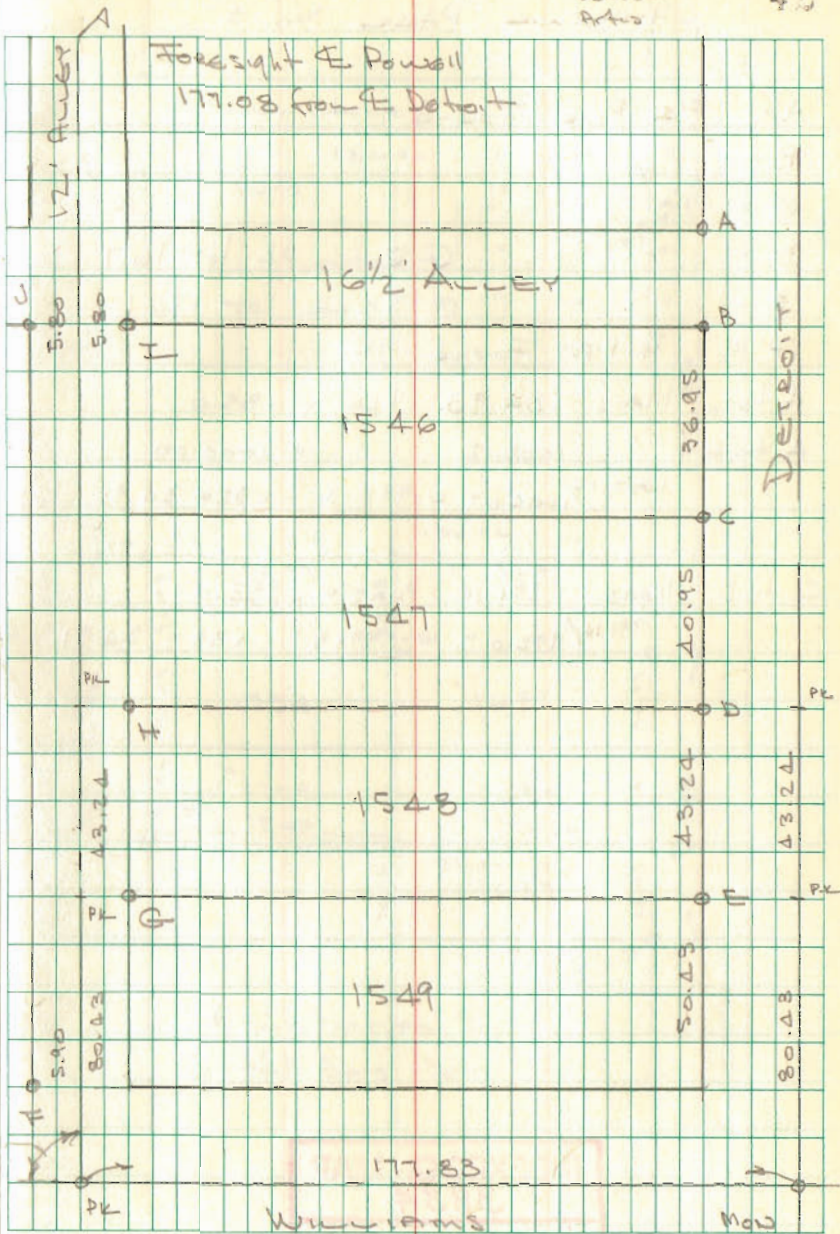
- A = $\frac{5}{8}$ " ϕ Iron Found
- B = " " "
- C = " " "
- D = $\frac{5}{8}$ " ϕ Bar Set
- E = " " "
- F = $\frac{3}{4}$ " Pipe Found
- G = $\frac{5}{8}$ " ϕ Bar Set
- H = " " "
- I = $\frac{5}{8}$ " ϕ Iron Found
- J = $\frac{3}{4}$ " Pipe Found



INDEXED ON MAP
7521

4/23/77
650
Dutton
Atlas

42



Lots 1637-1639 & 1737-1739
CHIPPEWA PARK No. 3

A = 3/4" Pipe Found

B = " " "

C = " " "

D = " " " @ Radius Pt lot 1617

E = " " " @ S.E. cor lot 1761

F = 3/4" Pipe Found - "OK"

A to C Meas 184.90 PLAT = 185.0

A to E " 1002.12 " = 1004.00

$$1002.12 / 1004.00 = 0.99813 \quad \times 35 = 34.93$$

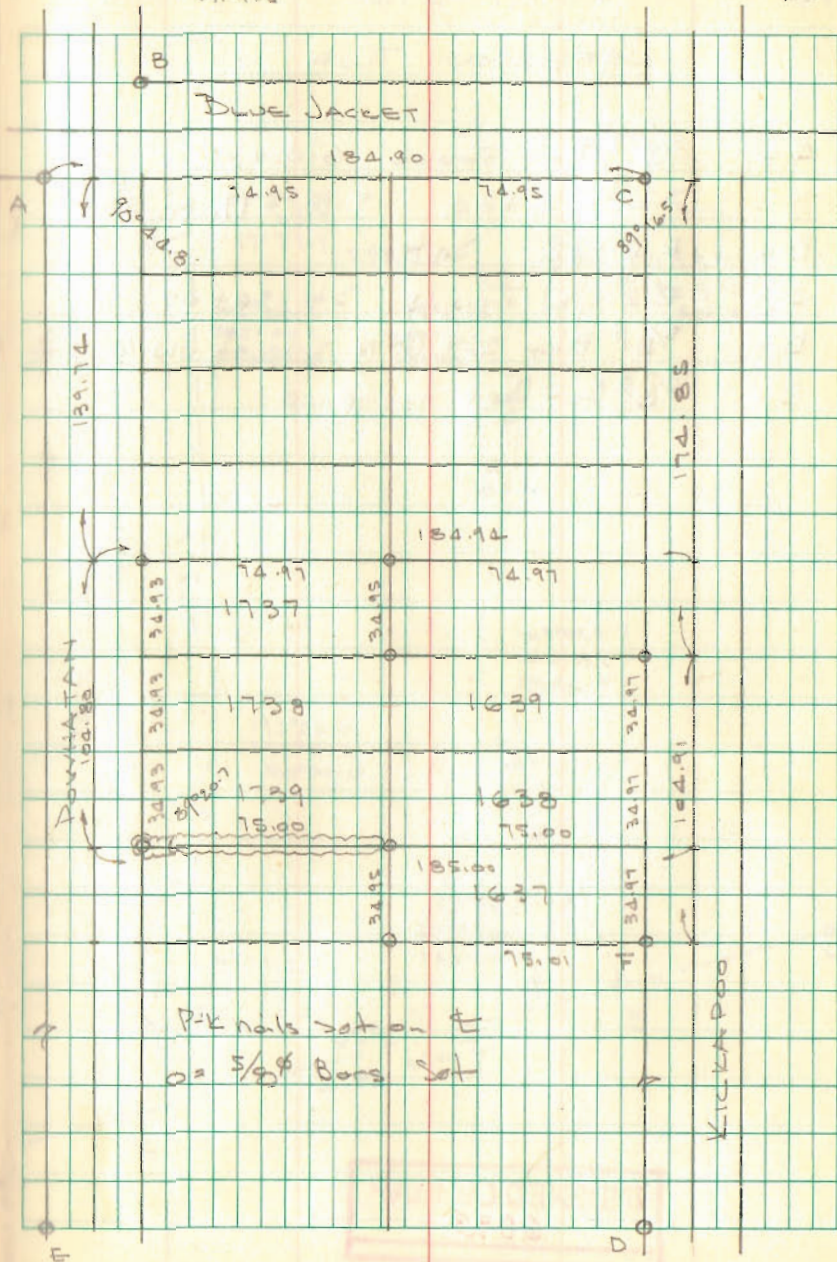
C to D Meas 991.14 PLAT = 992.0

$$991.14 / 992.0 = 0.99913 \quad \times 35 = 34.97$$

Dodson
Art's

5/7/77

43



INDEXED ON MAP

3834

SMITH SURVEY
V.M.S. 2674

JEFFERSON TWP

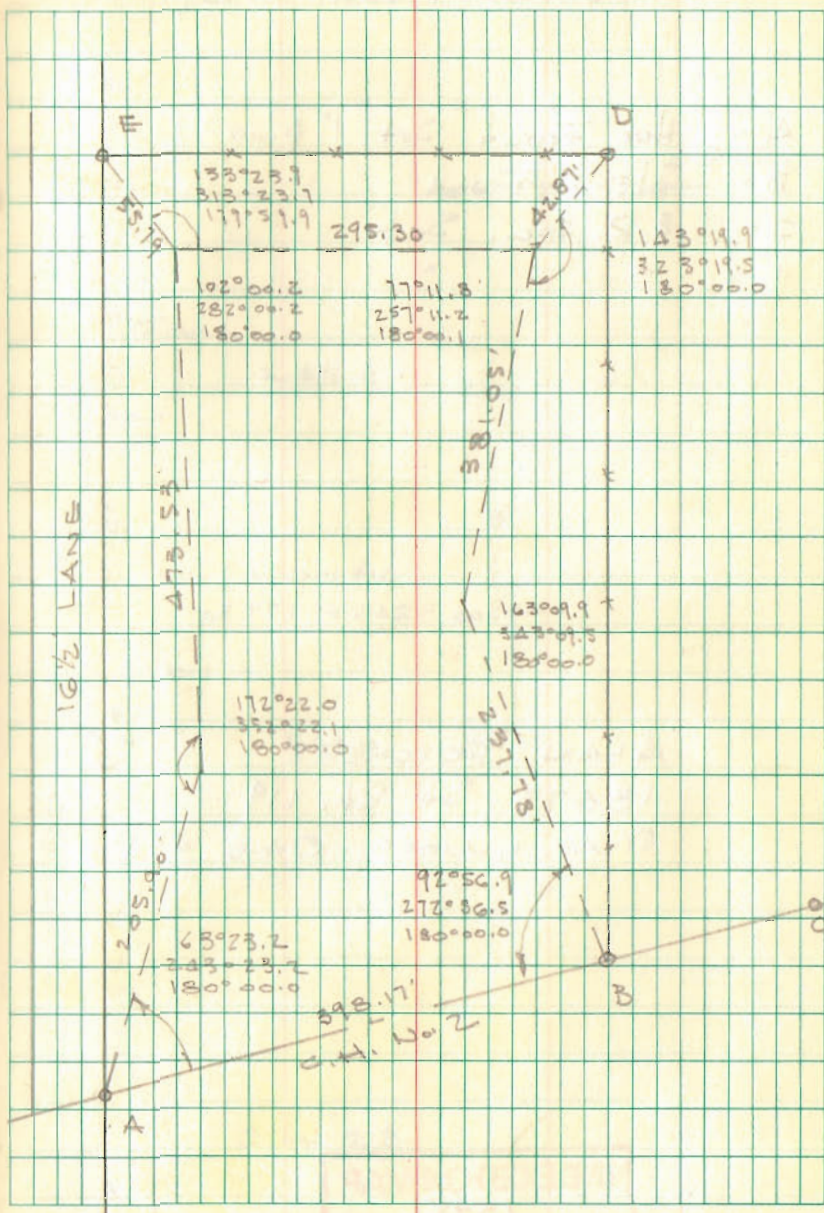
- A = $3/8"$ ϕ Bar Found 6" Deep
Jb. 148+80 F.B. 579 M. 58
- B = R.R. Spk. Jet
- C = R.R. Spk. Found. Jb 156+67
- D = $5/8"$ ϕ Bar Set @ N. side of old Co. post
- E = $5/8"$ ϕ Bar Set in fence

INDEXED ON MAP
6893

Dodson
Artis

5/21/77

44



BORCHERS SURVEY
DLOOM FIELD TWP.

- A = Hub Found 2 1/2" Pipe
- B = Stone Found
- C = R.R. Spr. Set
- D = " " "

$$433.00 - 245.0 = 177.80$$

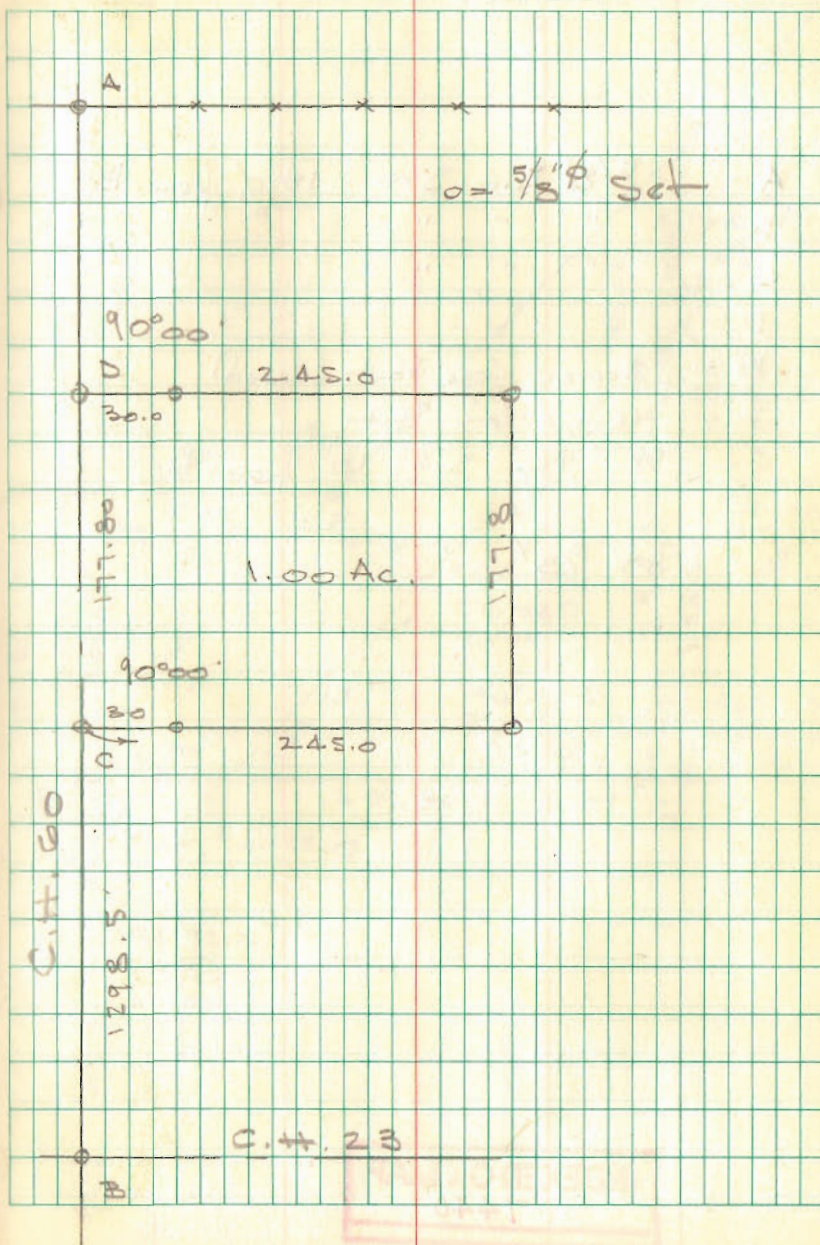
ALAN BORCHERS
18675 St. Rt. 119
MAPLEWOOD, ONT 4S340

INDEXED ON MAP
1595

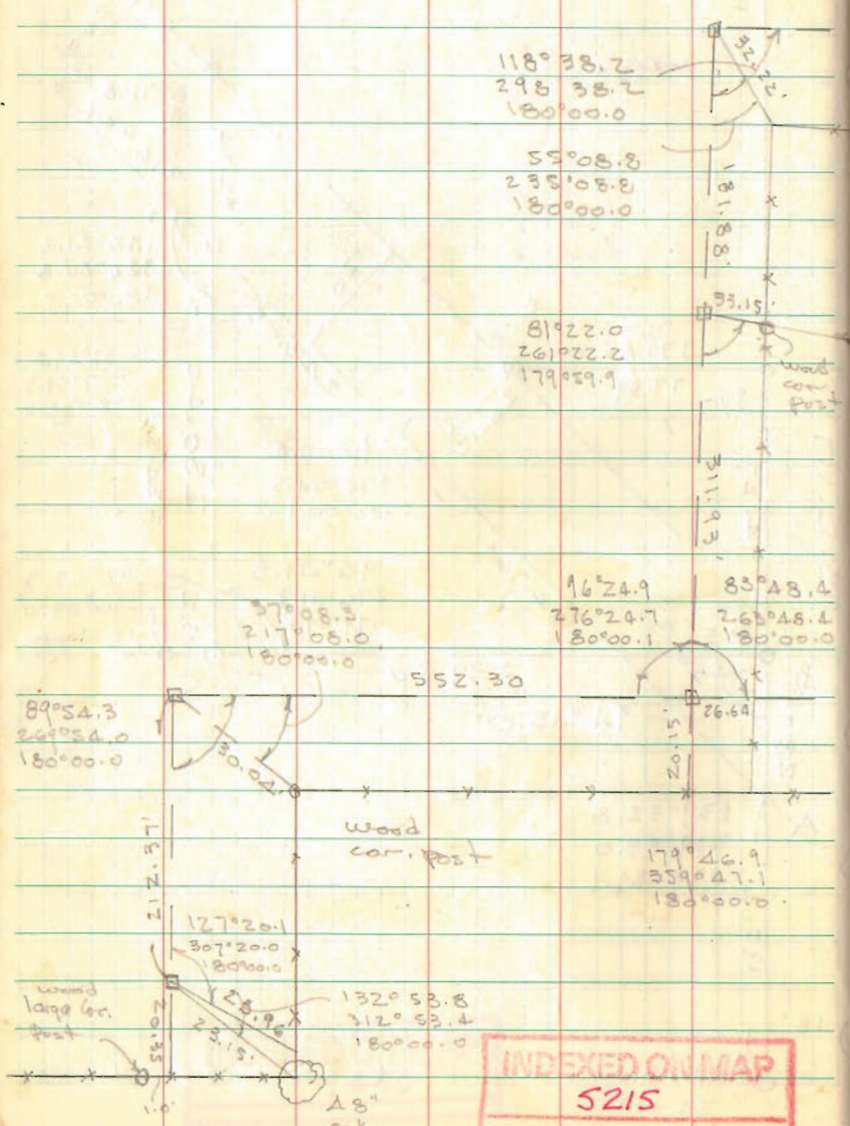
Dutton
Paris

5/26/77

45



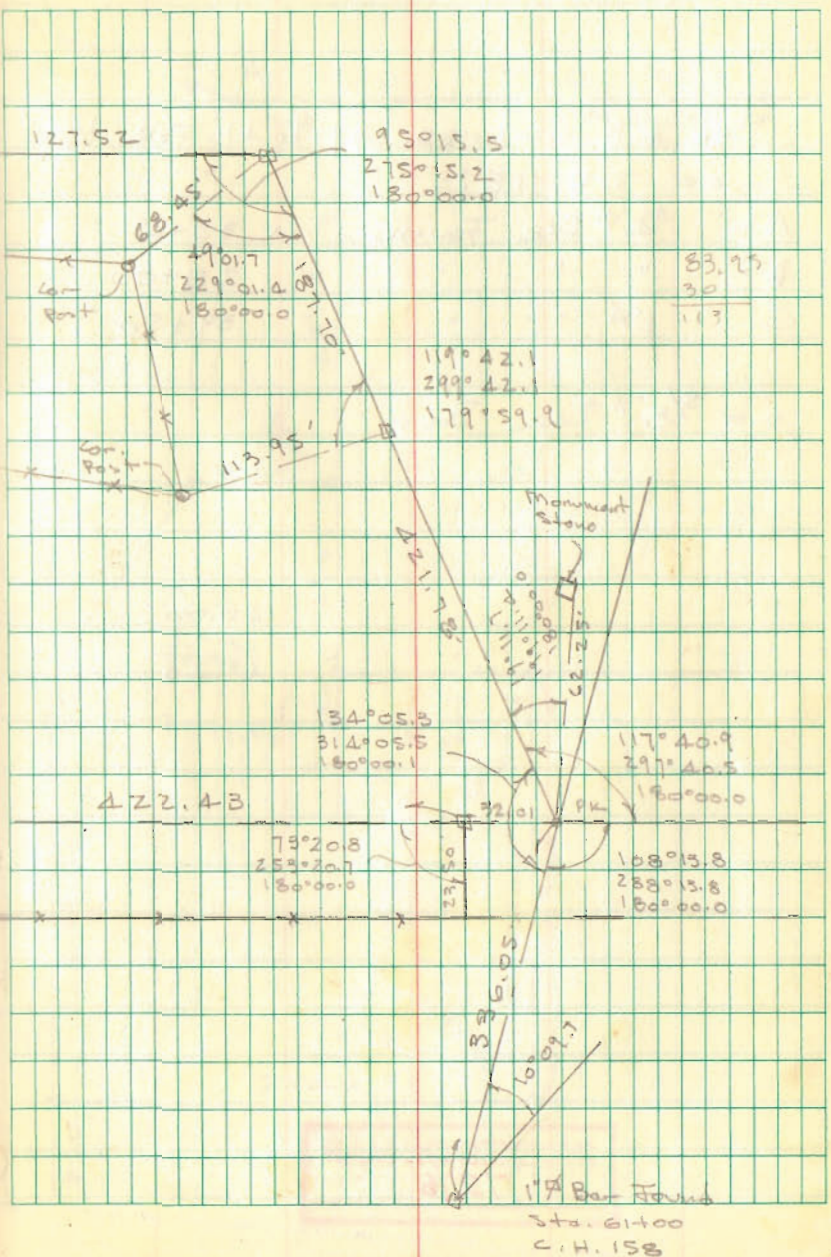
SHIRK SURVEY
ZANG TWP.



INDEXED ON MAP
5215

Dutton
Ant's

95° July 9, 1977
" 16 "



JOHNSON SURVEY
CONT'D.

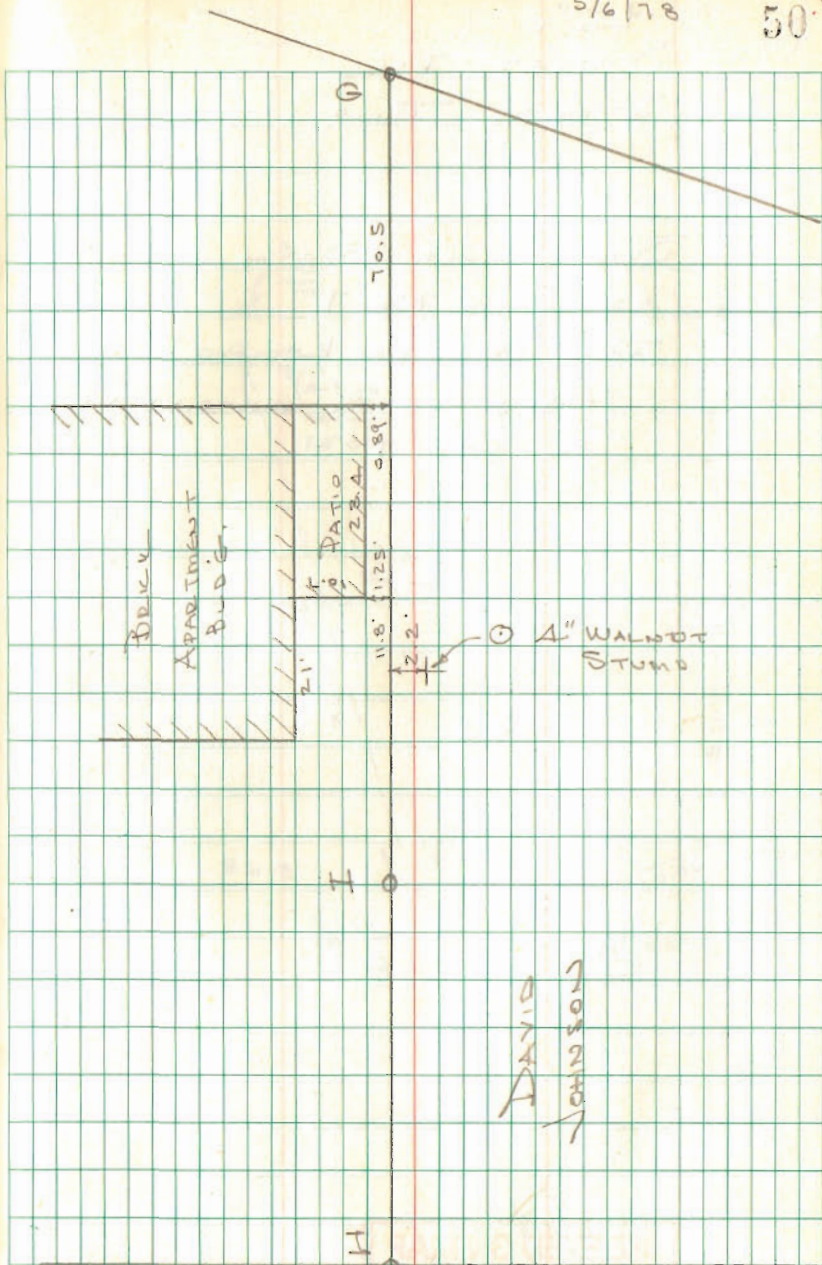
REF:

DEED	VOL	PG.	
	343	81	Johnson
	367	77S	"
	364	751	Losey
	330	633	Beair
	373	85	Ritter
	322	350	Humble

INDEXED ON MAP
7010

5/6/78

50



Lot 7
Sunset Isl
Stokes Twp

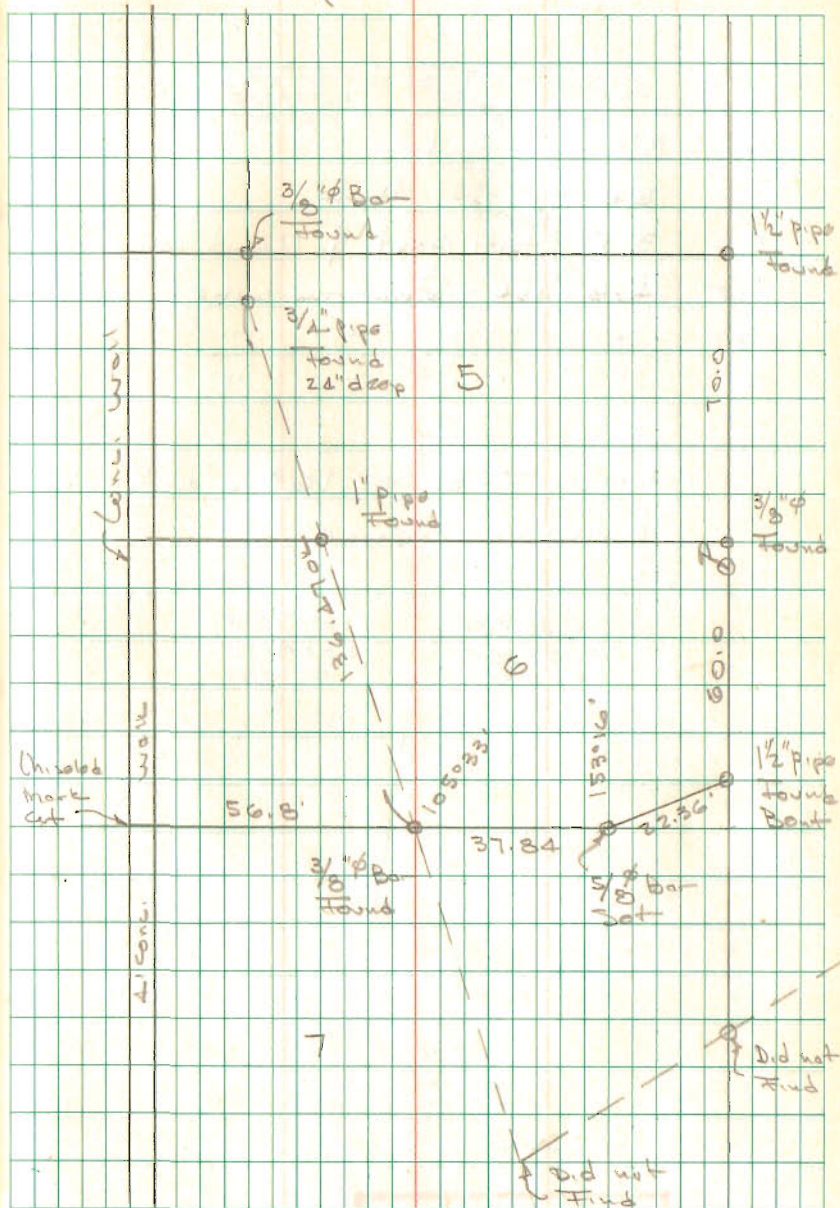
SURVEY OF NORTH LINE
OF LOT No. 7
FOR WILLIAM KEMPER
(Home under construction
ON LOT 7

INDEXED ON MAP
3915

Dodson
McLardy

May 6, 1978

51



Stover Survey
MARR CITY

- A = 3" ϕ steel Post
- B = R.R. Tie Cor. Post
- C = 3" ϕ Steel post & Wood Cor. post
- D = Hub Set - Random Line
- E = " " " "
- F = " " " "

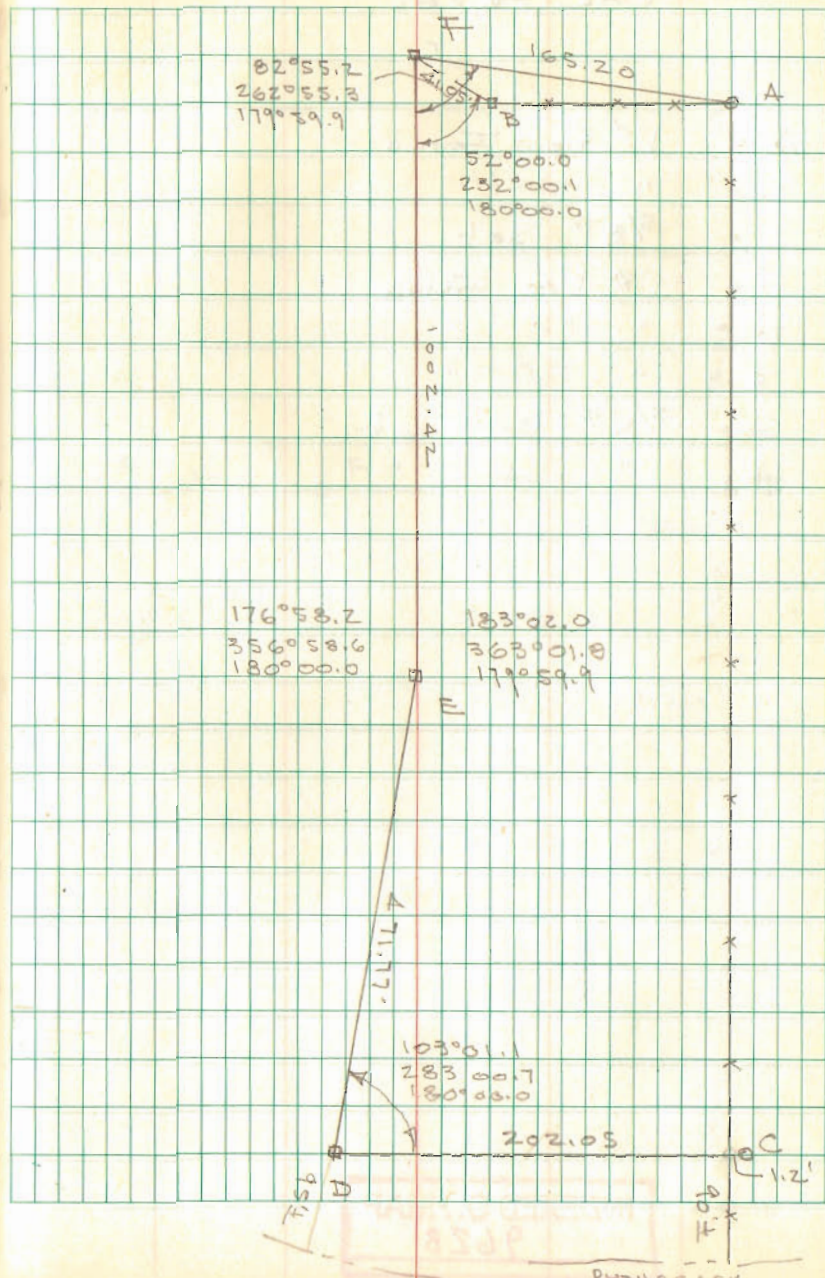
Line F-E = 165.2' \pm S. of Existing Fence

INDEXED ON MAP
5327

Dutton
Artis

May 20, 1978
800

52



Lot 1134
OAK ACRES

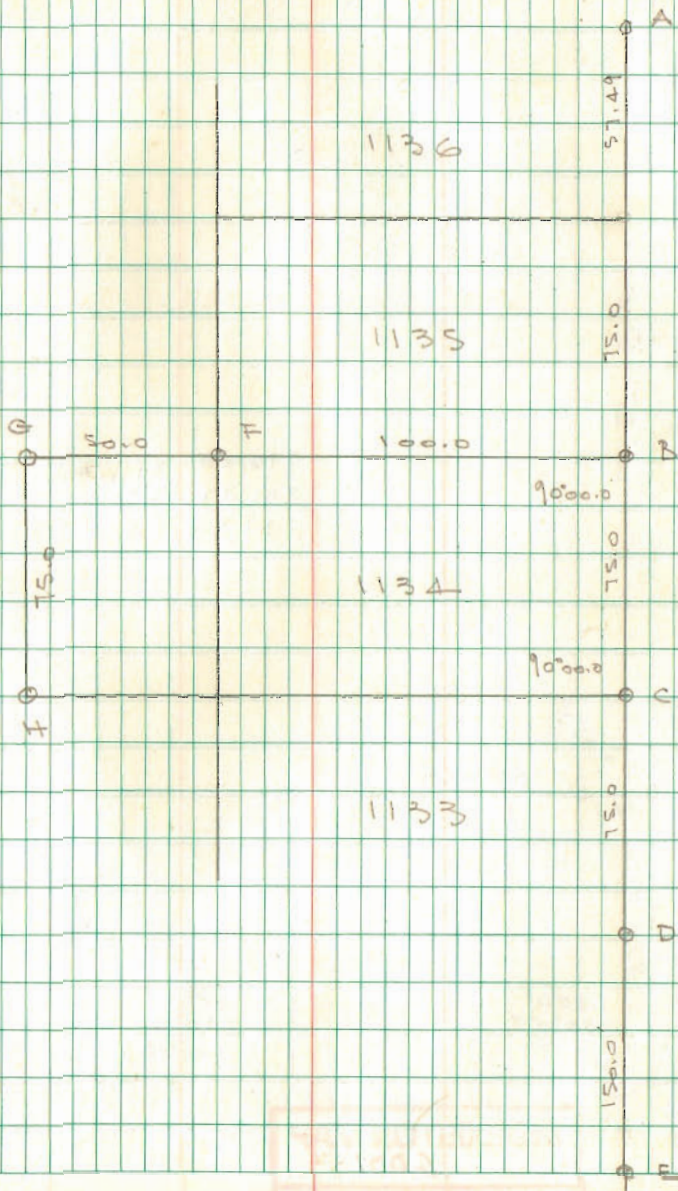
A = 1" ϕ Bar Found
B = " " "
C = 5/8" ϕ Set
D = 1" ϕ Bar Found
E = " " "
F = " " "
G = 5/8" ϕ Bar Set
H = " " "

INDEXED ON MAP
9628

Dodson
Artis

5/27/78

53



INDEXED ON MAP
9628

FOGHT SURVEY

316.80	316.80
285.47	290.61
31.33	26.19

INDEXED ON MAP
6001

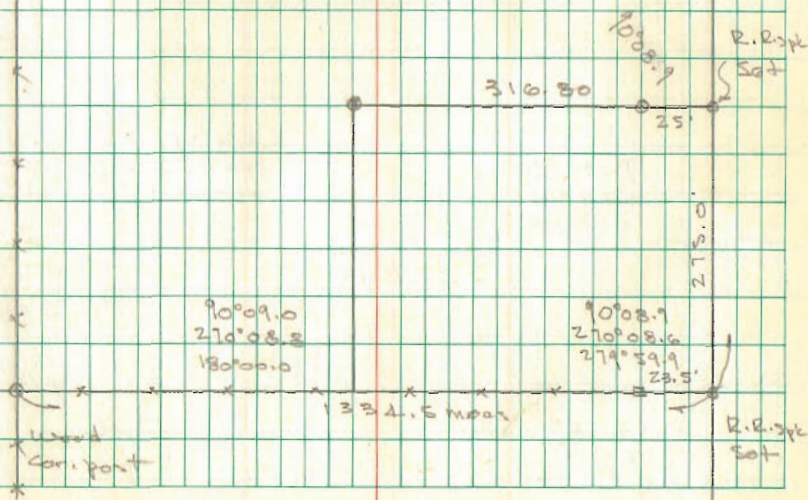
Dodson
Anti

June 3, 1978
700

54

T.R. 92

T.R. 80
1900.3



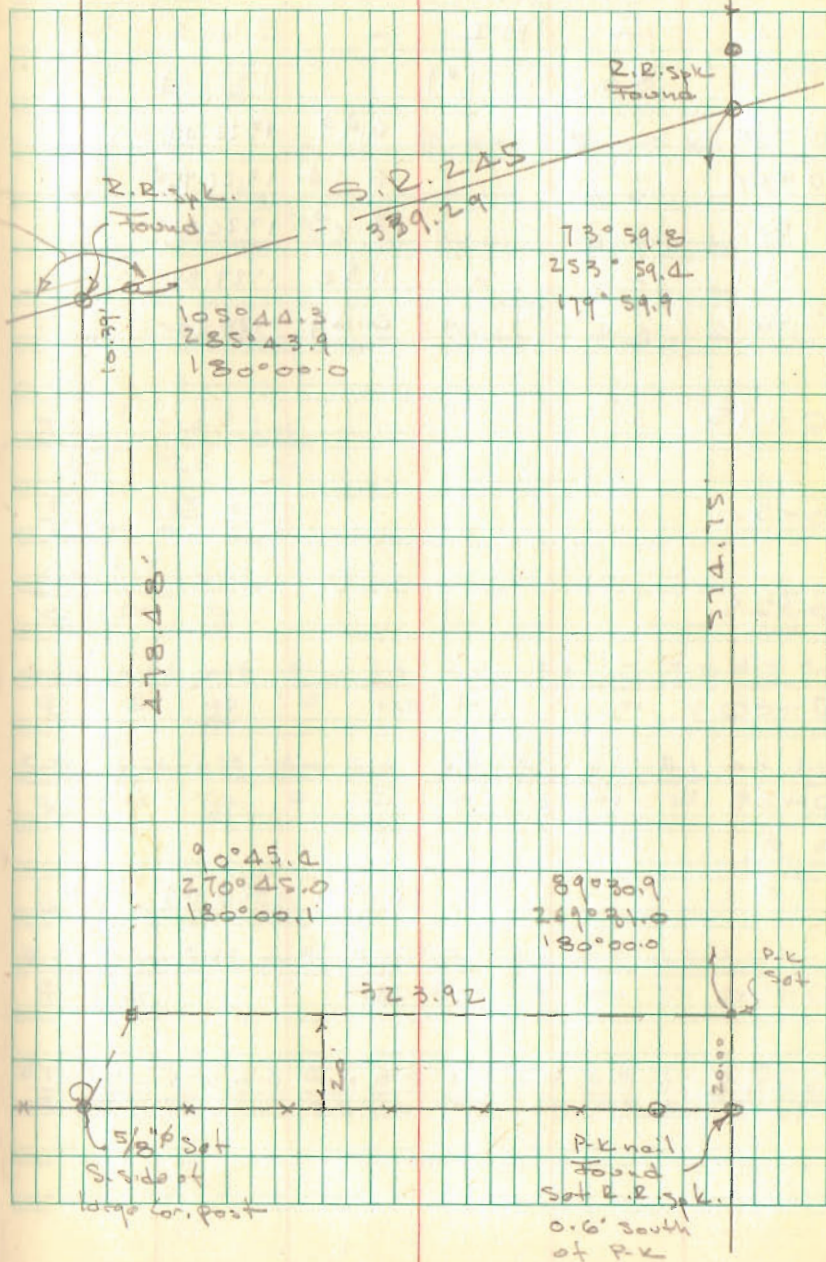
ELLENAN SURVEY
CHAMPAIGN COUNTY

Bhs 177° 27.5
 Mon 357° 27.2
 180° 00.1
 105° 47.1
 285 46.8
 180° 00.0

105° 44.1
 73 59.6
 89 31.0
 90 45.4
 357-180.1

June 3, 1978

55



Survey of
Lots 502-503-504
Lackview, Ohio

A = 1 1/2" Pipe Found

B = " " "

C = " " "

D = 5/8" Bar Set

E = " " "

Note A-B-C ok for line

Found 1 1/2" pipe N.W. Cor 498
Frontage from C checks ok

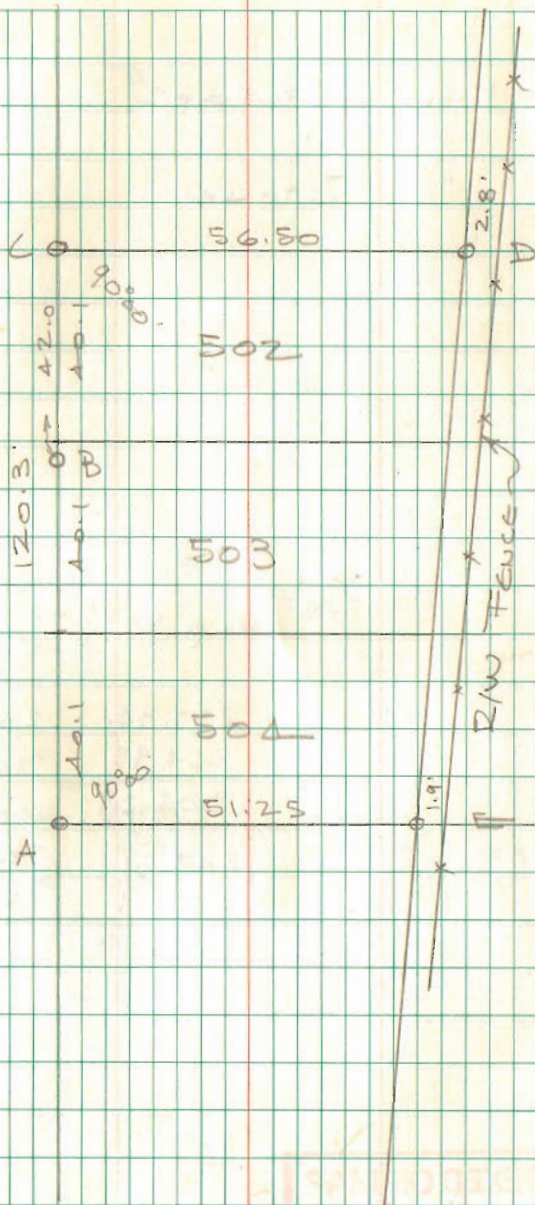
From A to R/W Point on lot 508
(see F.B. 700 pg. 26) Checks as
shown in F.B. 700 pg. 26

INDEXED ON MAP
96 29

Dutton
Nichols

6/12/79

60



INDEXED ON MAP
96 29

A = Mon - 1" ϕ BAR
 B = " " "
 C = " STONE

Temp 30°

237.34	237.29
264.95	264.89
502.29	502.18
249.84	249.79
278.11	278.05
527.95	527.84

89° 52.8
 269° 52.1
 180° 00.2

INDEXED ON MAP
 7705

61

BROWN

○
 ○

237.34

MADE

264.95

89° 54.9
 269° 54.1
 180° 00.2

15.86

PRB
 242.96

90° 07.4
 270° 07.3
 179° 59.5

89° 53.9
 269° 53.1
 180° 00.1

249.84

○

A

SANDUSKY

278.11

MADE

○
 ○

KAUFFMAN SURVEY
BELLEFONTAINE

- A = Stone w/mon Box Found
- B = " " " "
- C = Copper point in brick Found
- D = 1" ϕ Bar w/mon Box Found
- E = " " " "
- F = Copper point in brick Found
- G = 1" ϕ BAR FOUND
- H = 1" ϕ HEAD BOLT FOUND "OK"
- I = " " " " "OK"
- J = 1/2" ϕ BAR FOUND (NOT ON LOT COR.)
- K = 5/8" ϕ BAR SET 1.0' N. OF
3/4" PIPE - SEE "K" SKIMMERS SURVEY
INDEX NO. 737
- L = 5/8" ϕ BAR SET
- M = " " "
- N = " " " 0.8' N. ϕ 2.8'
W. OF 3/4" PIPE FOUND
- O = 1" PIPE FOUND
- P = 1" ϕ BAR SET
- Q = 5/8" ϕ BAR SET

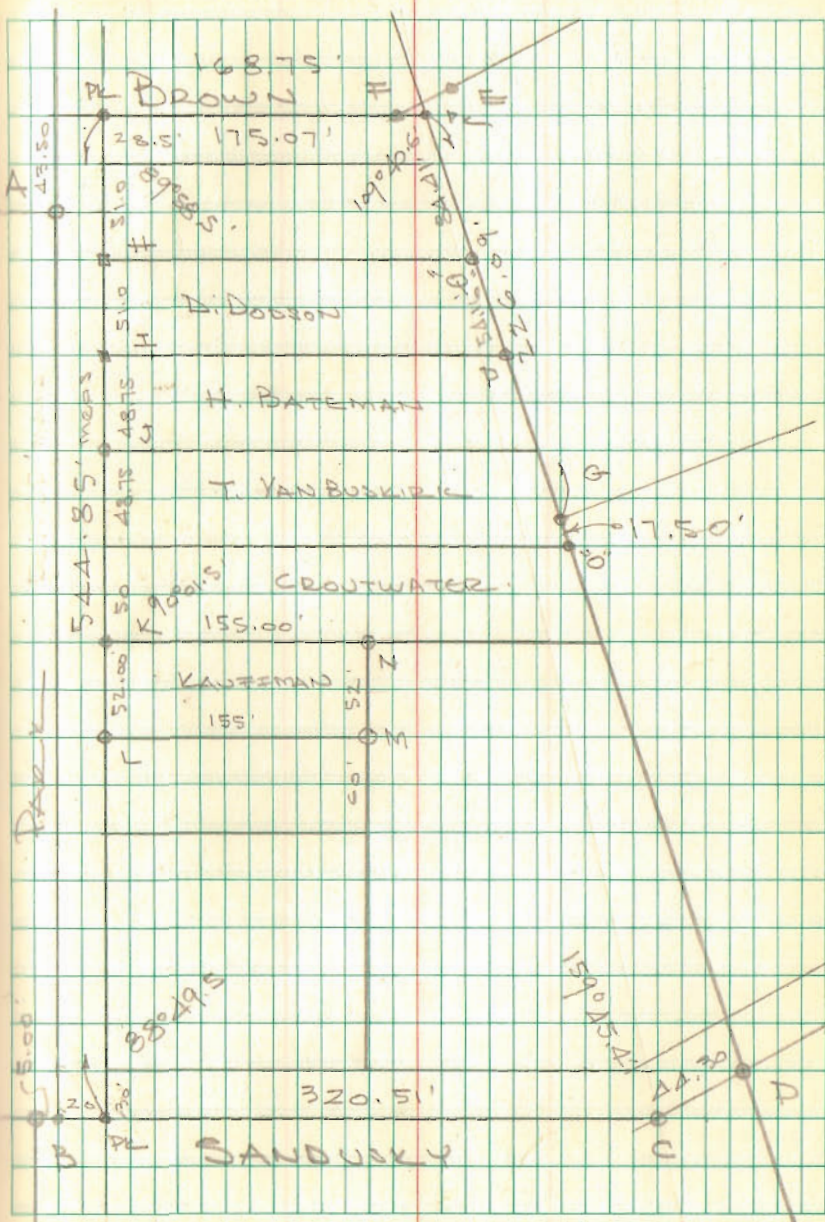
K to ϕ SANDUSKY = 236.83 + 30.01
= 266.84

INDEXED ON MAP
6870

Dodson
Dill

8/25/80
9/13/80

69



PART LOT 394-395
BELLEFONTAINE, OHIO

A = City Mon 1" ϕ BAR FOUND
B = " " " "
C = 5/8" ϕ BAR SET

Φ Columbus To Φ 16 1/2' ALLEY
= 524.7 - 258.25 = 266.45
ON Φ OF WEST STREET

Φ Columbus To Φ 16 1/2' ALLEY
= 526.4' - 258.25 = 268.15'
ON Φ OF EVERETT ST.

See City F.B. 273 pg. 24

PK NAILS FOUND ON Φ OF WEST ST.
254.13' N. OF Φ Columbus Φ
@ 318.70' USED FOR Φ -
MON @ Φ WEST & SANDUSKY
HAS BEEN REMOVED - NAIL @
254.13 SET BY D.I.D. WHEN MON
@ SANDUSKY WAS EXISTING.

INDEXED ON MAP
6562

D. DODSON
C. DILL

9/15/80

73

