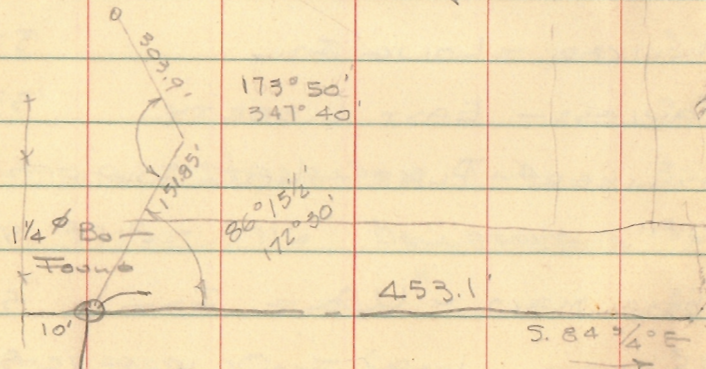


S.E. Cor. of A.J.M. Hart Property

⊥ @ "A" right "B" ↙ ↘ RT & L.

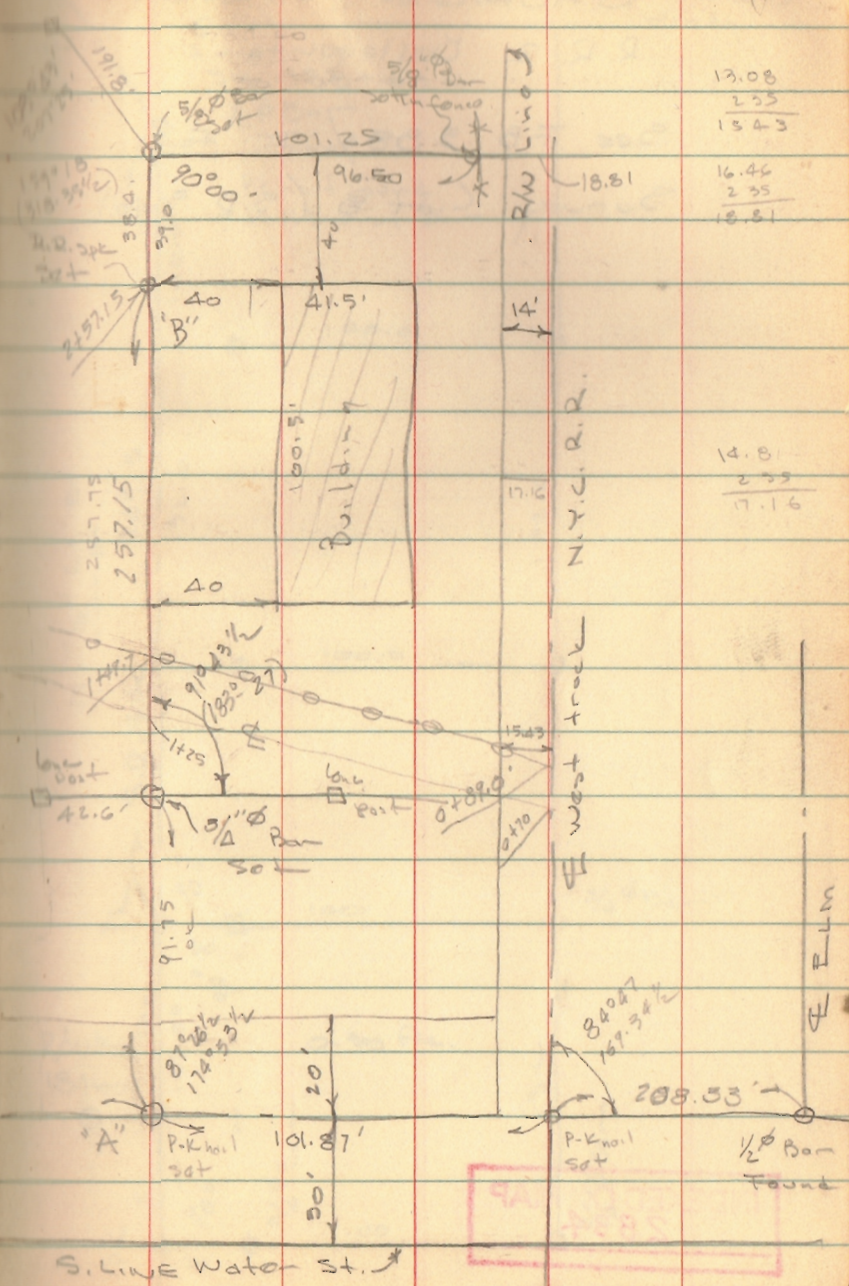
Horiz	Dist	Object
24° 36' LT	102'	10" $\square$ Conc. post (R?)
17° 29' LT	153'	S.E. cor Bridge
16° 12' LT	168'	N.E. " "
21° 19' LT	188'	NW " "
22° 58' LT	171'	Sw " "
25° 49' RT	100'	10" $\square$ Conc. Post @ S. edge stream
49° 15' RT	108'	10" $\square$ Conc. Post @ " "
52° 42' RT	116'	Sw. br. Br. @ R.R.
48° 53' RT	123'	N.W. " " "
41° 49' RT	134'	2" $\phi$ steel Conc. post



INDEXED ON MAP  
35 76

Dodson  
G. Geallie

1/11/64  
20°



13.08  
2.55  
15.63

14.81  
2.55  
17.16

INDEXED ON MAP  
35 76



T.E. SAUSAGE SURVEY

R.R. 2 Bellefontaine

See FB 588/17 For

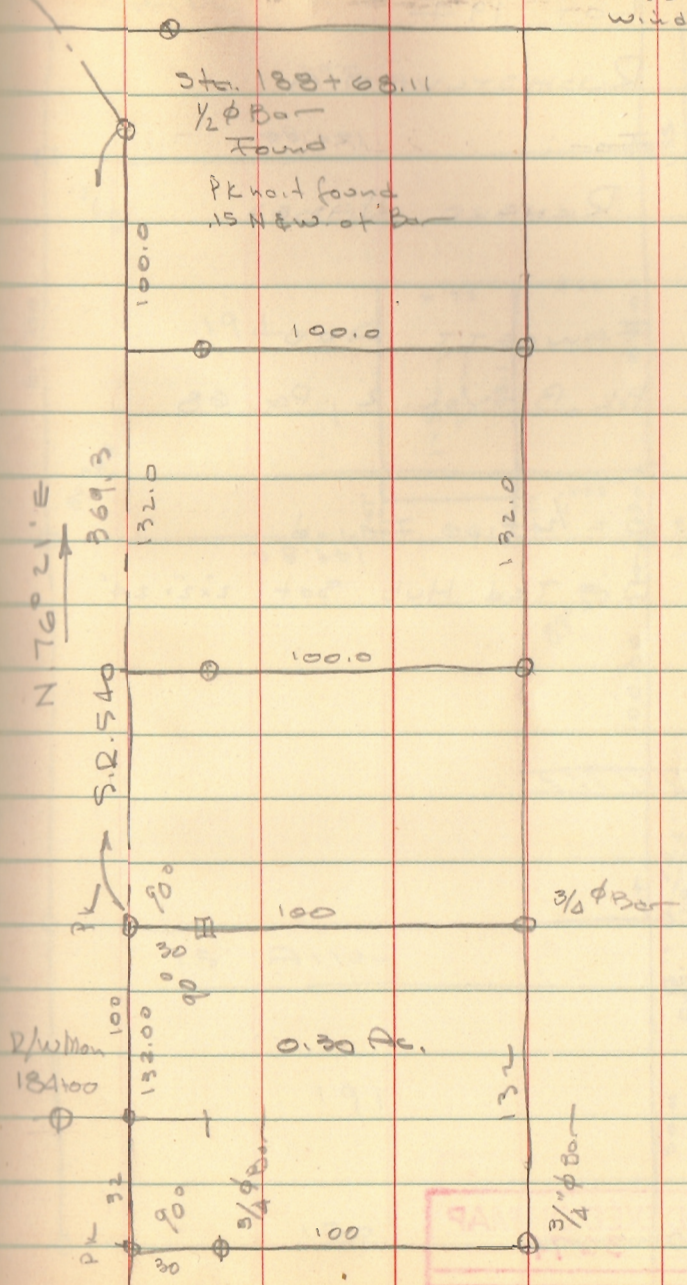
Survey C.H. 8 (S.R. 540)

INDEXED ON MAP  
2834

2/11/64

30°  
windy

2





LOT 194

PENNSYLVANIA

For:

RICHARD JAMES

FAWCETT ADD

BK. B - Vol. 2, Pg. 68

O = 1/2 Pipe Found

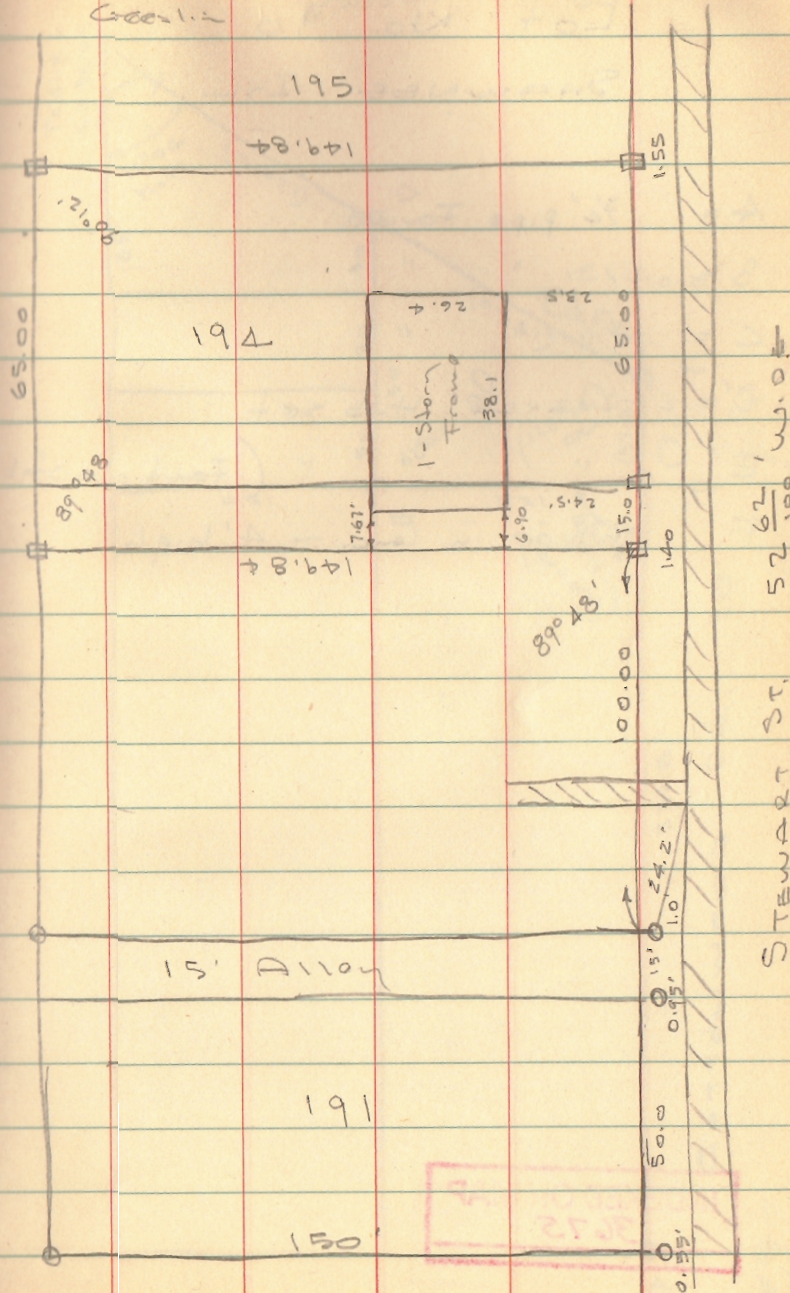
□ = Tied Hub Set 2'x2'x24"

INDEXED ON MAP  
3674

Dodson  
Green

4/4/64

3





LOT No. 90

SHAWNEE Isl.

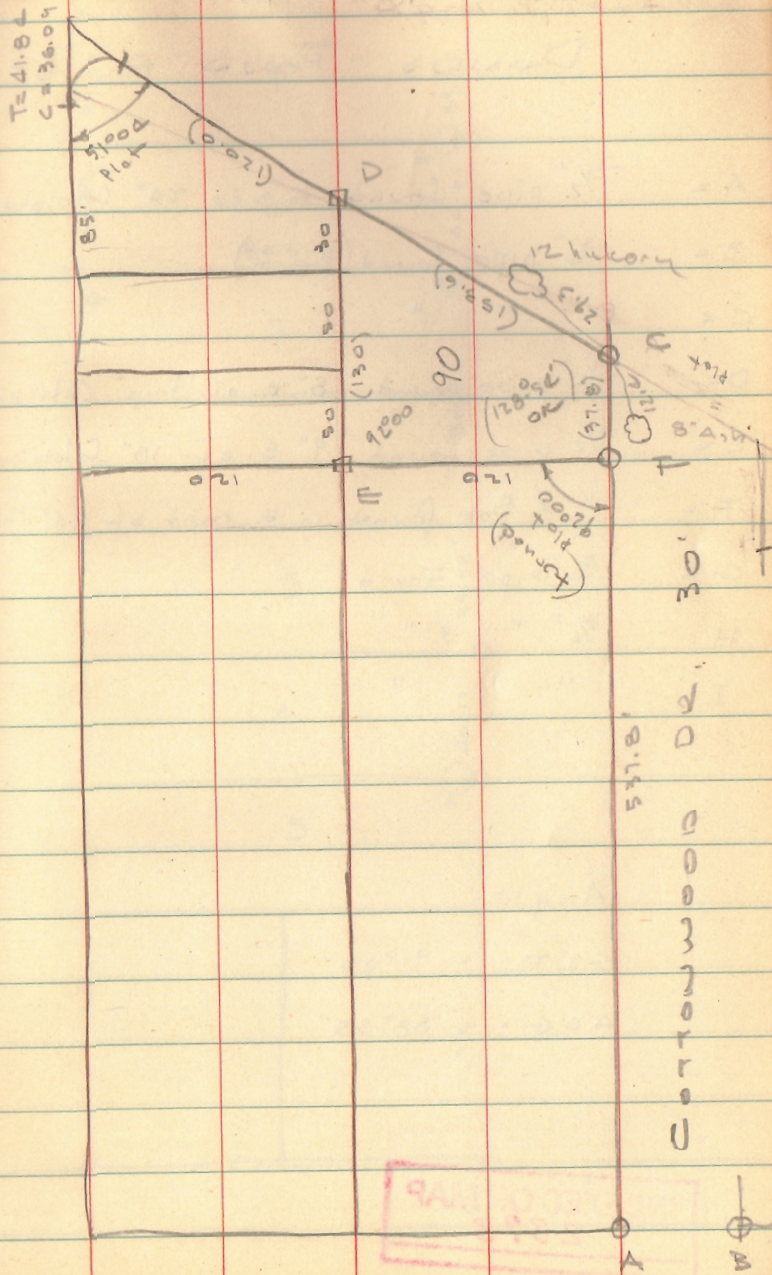
- A = 3/4" pipe Found
- B = " " "
- C = " " "
- D = 2x2x4" Hub set
- E = " " " (Found old stake)
- F = 2" pipe in Conc. - 4' high

INDEXED ON MAP  
3675

Dodson  
Goodlin

4-11-64  
60°

4



INDEXED ON MAP  
3675



LOT 8 - 9

DUNNS POND ALLOT

- A = 1/2" pipe found E. side 24" Catolpha  
 B = 3/4" pipe found (Bent)  
 C = " " "  
 D = 1/2" pipe found 8" E. of trip. Catolpha  
 E = 1/2" pipe found 9" E. of 18" Catolpha  
 F = 1/2" Bar found 14" E. root of 24" dbl. Catolpha.  
 G = 3/4" pipe Found  
 H = 3/4" " "  
 I = " " "

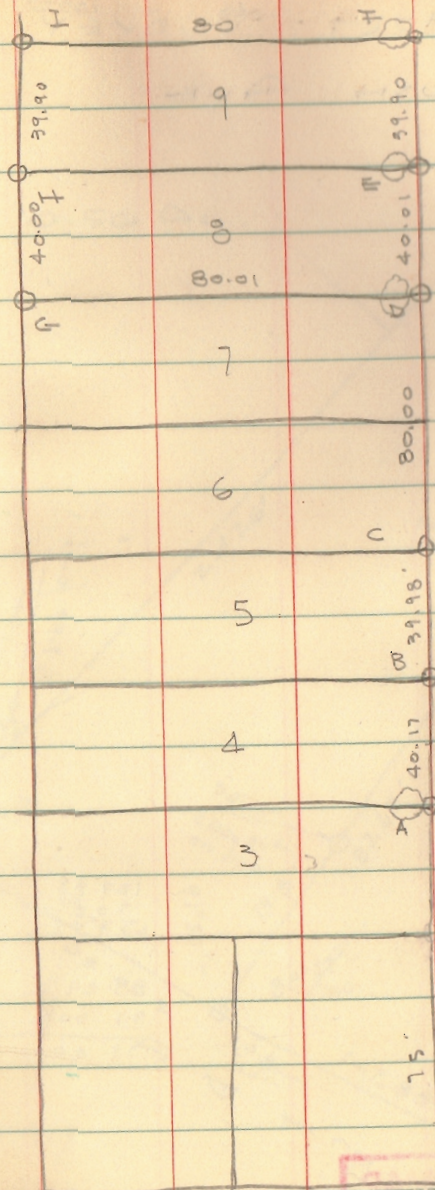
Angle

$$\angle I F = 91^{\circ}00$$

$$\angle A D G = 88^{\circ}55'$$

4-18-64

5



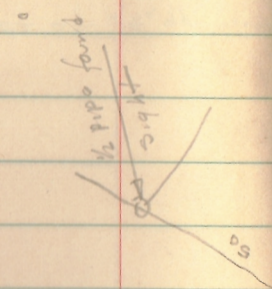
INDEXED ON MAP  
2393

30 1875



SHORT SURVEY

RUSH AVE



129.88  
 70.97  
 200.85

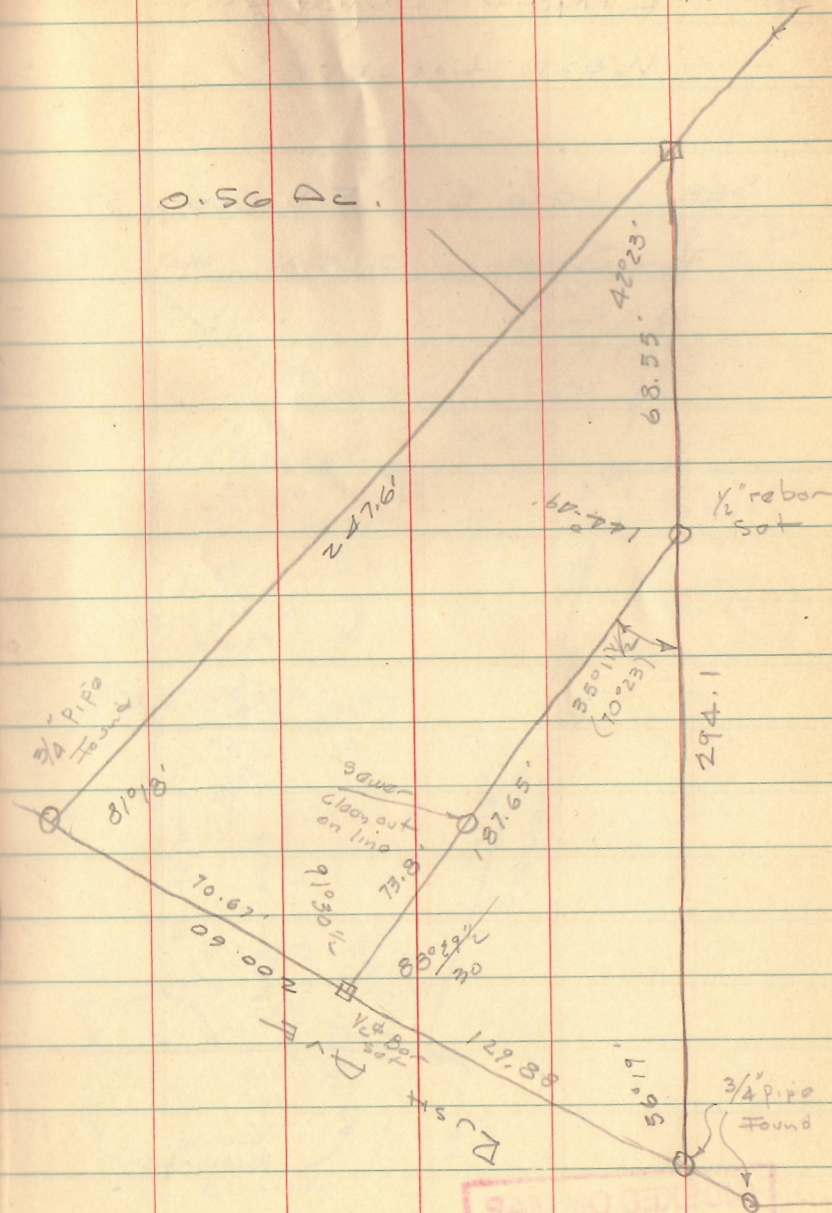
88 29 1/2  
 91 30 1/2  
 179 60

INDEXED ON MAP  
 2739

Dodson  
 Geeslin

May 2, 1964  
 750 6

0.56 Dc.



INDEXED ON MAP  
 2739



# KING SURVEY

WEST LIBERTY

See Loco. Eng F.B 600 pg 37

For Survey of 0.25 Ac.

89.11%  
60  
29.11%

160.0  
71.78  
231.78

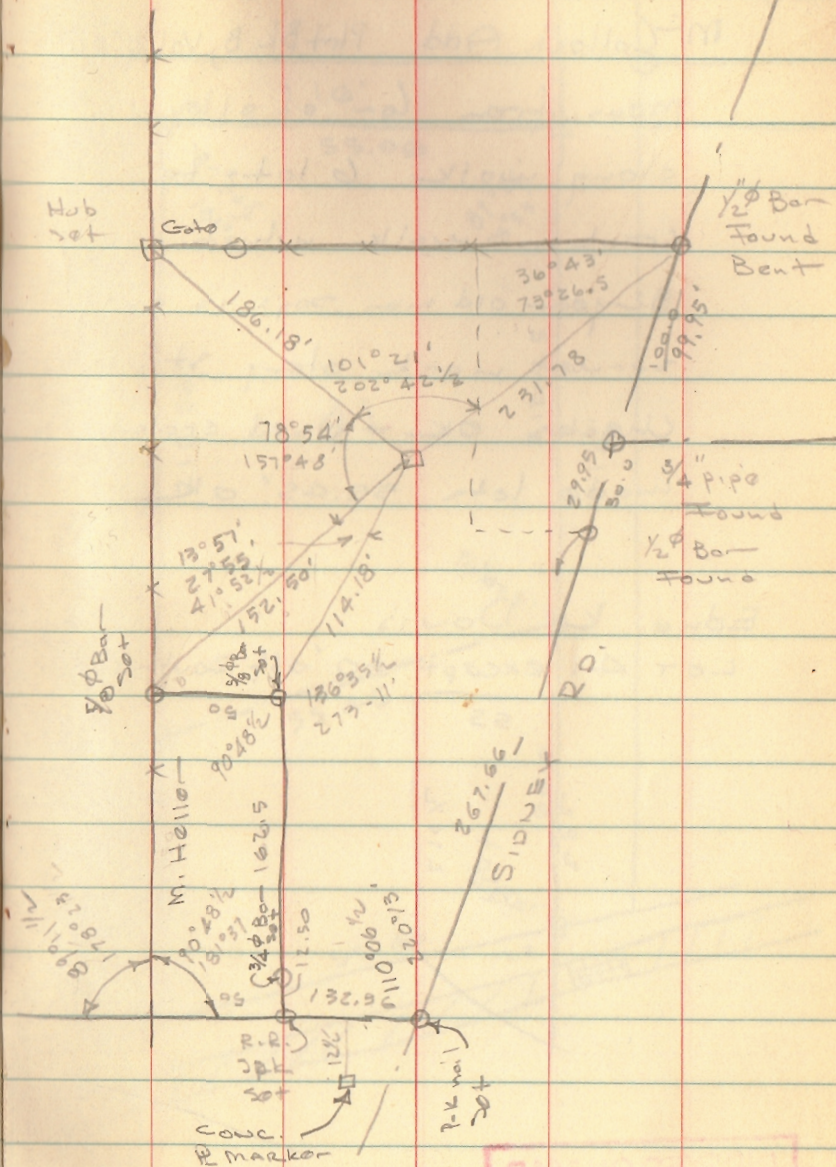
CONC.  
R Marker

INDEXED ON MAP.  
3802

Dodson  
Goodlin

May 2, 1964  
80°

7



92 03  
SP 18



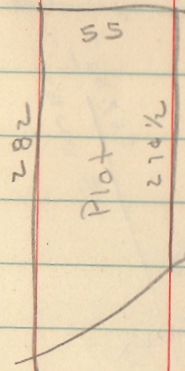
Lot 41  
ZAVES FIELD

McCulloch Add. Plat BK B, Vol 2 pg. 98

near from cor of alley  
along walk 6 lots to  
crack in walk which  
82 year old man says is only  
survey mark along st.  
Checks OK - used grade  
made lots 55.45' OK

Edna K Davis

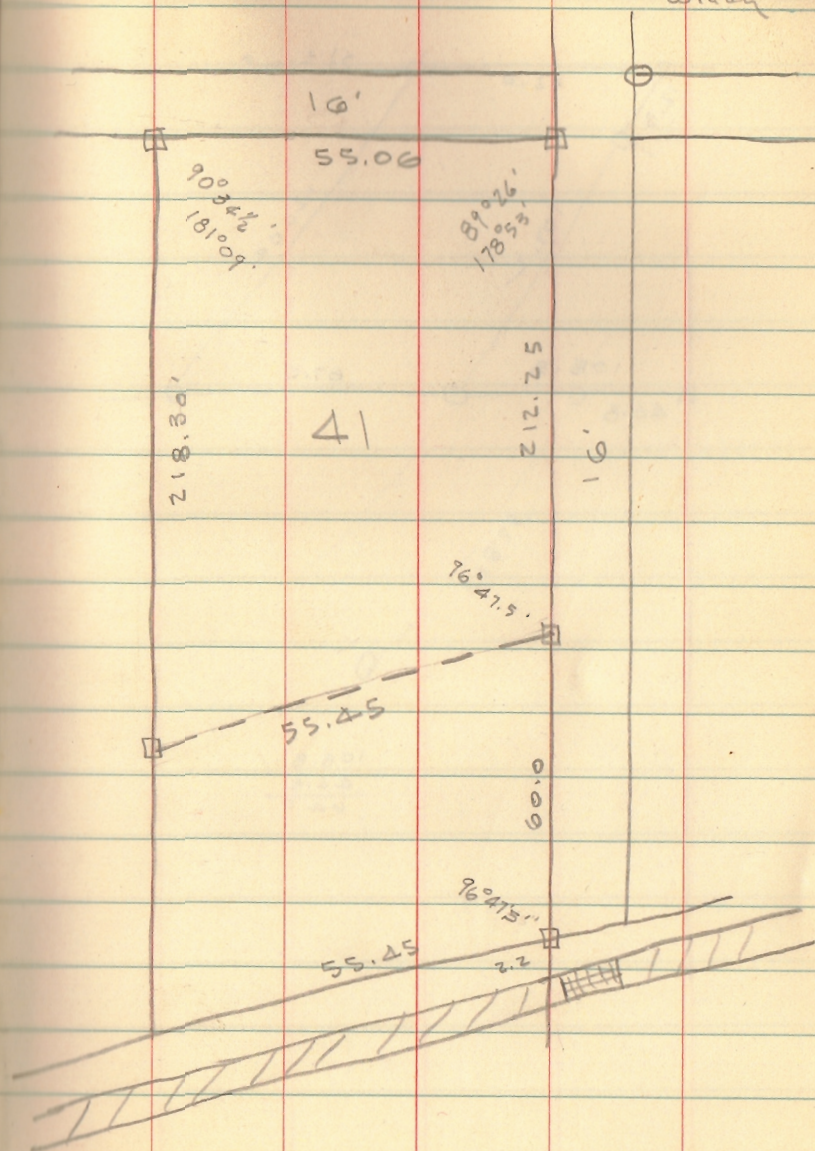
Lot 41 except 60' off Southend



INDEXED ON MAP  
3792

Dodson  
Geoslin

5-9-64  
70°  
windy



□ = Tkd Hub 2x2x18 Set

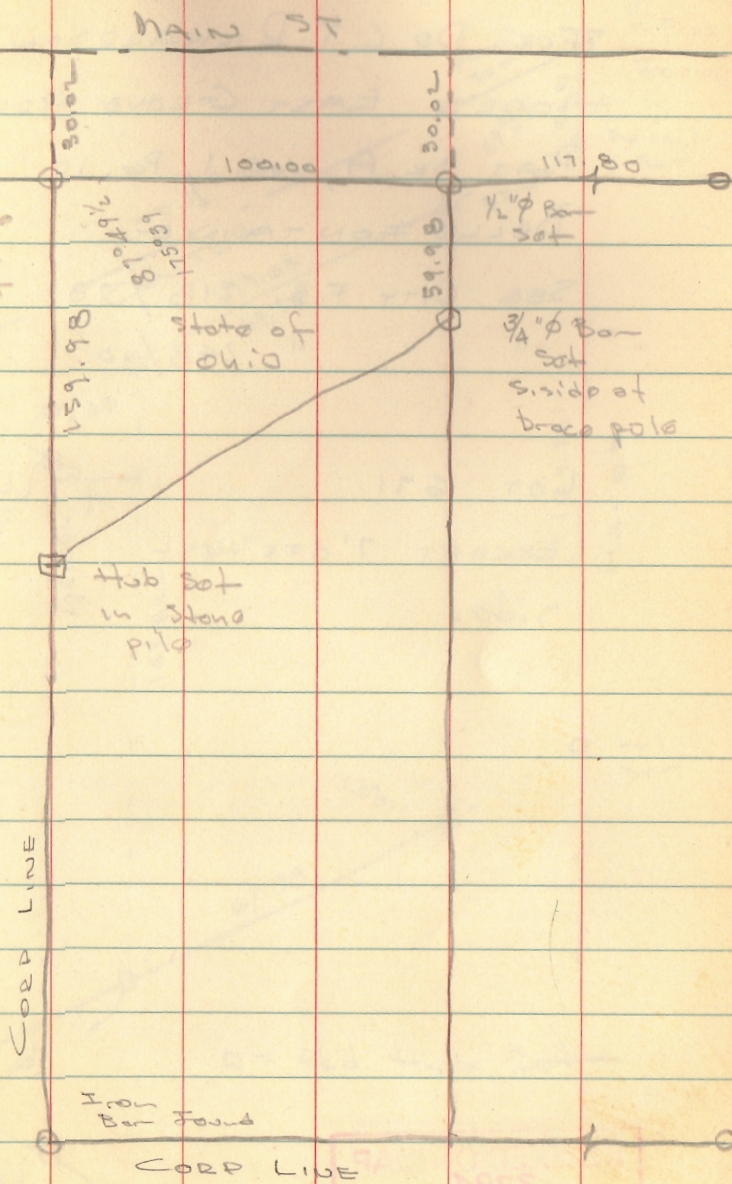


PAGE DAIRY CO  
NO. MAIN ST,  
DELLFONTAINE

Dodson  
Geolin

May 23, 1964

11



INDEXED ON MAP  
3793



LOT 671

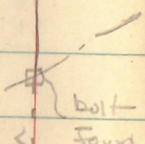
FOR DR. C. T. RICHARDSON  
HOGE'S EAST GROVE ADD.  
PLAT BK A, Vol. 1, Pg. 10  
BELLEFONTAINE

SEE CITY F.B. 218/78  
" " " 248/10

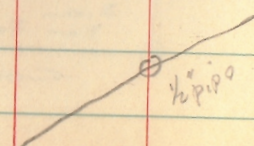
LOT 671

EXCEPT 7' OFF WEST  
SIDE.

Nelson



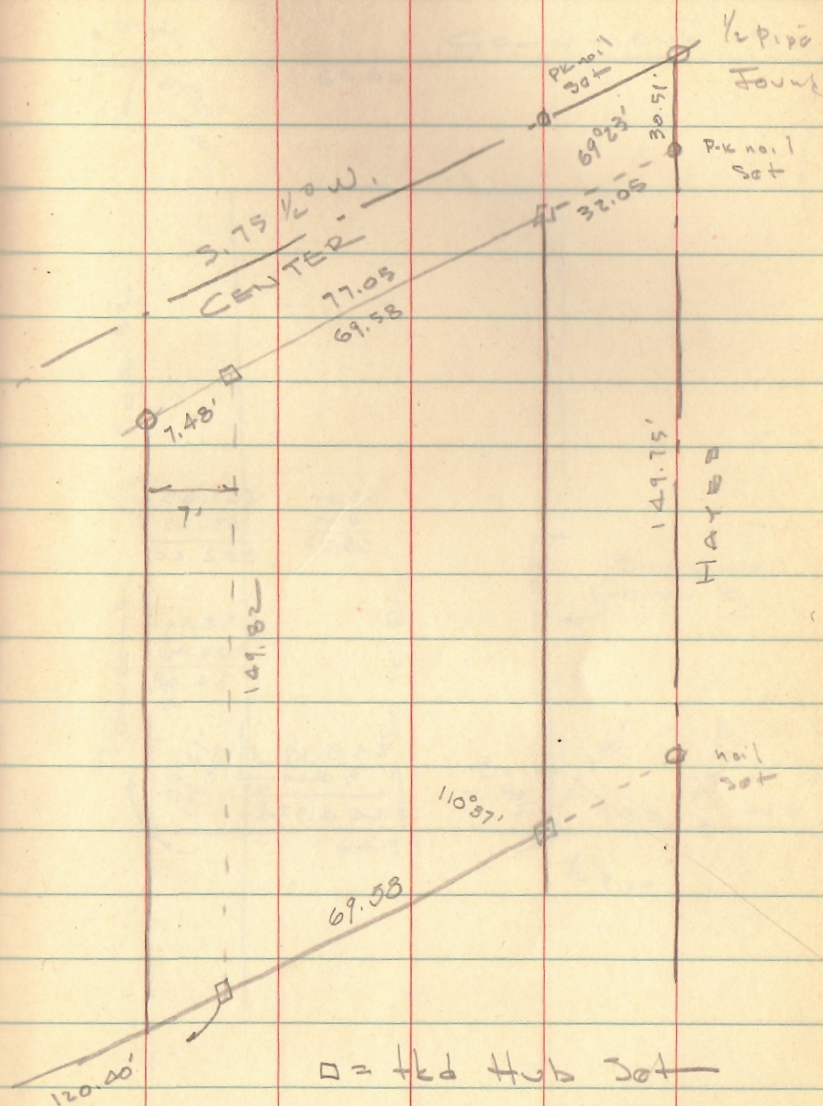
bolt  
found



1/2 pipe

Dodson  
Circ

May 28, 1964  
600 12



□ = Hub Set

INDEXED ON MAP  
3794

INDEXED ON MAP  
3794



BICKHAM SURVEY  
POWERS ST.

55.00    267.65  
 8.25    63.25  
 ---  
 63.25    204.40

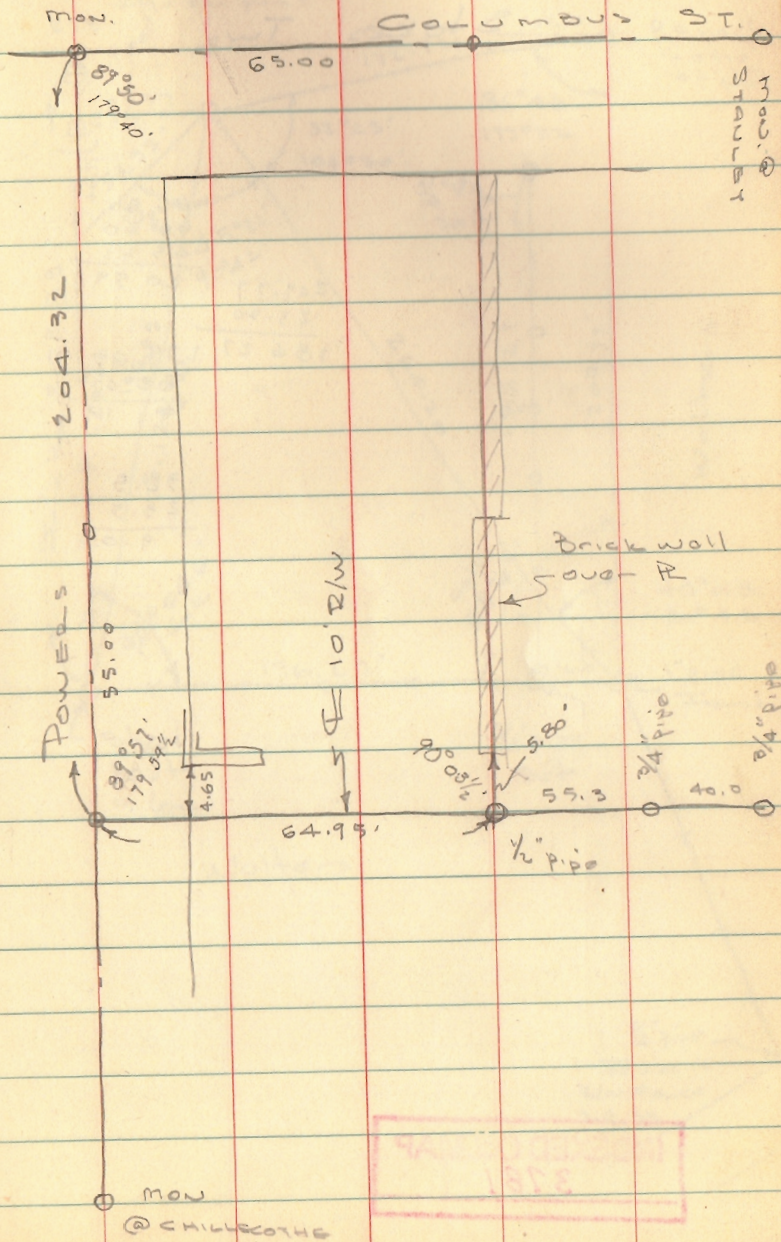
238.99  
 204.40  
 ---  
 34.59

238.99  
 34.67  
 ---  
 204.32

Dodson  
Circ

May 29, 1964

13



INDEXED ON MAP

9614

INDEXED ON MAP  
1578



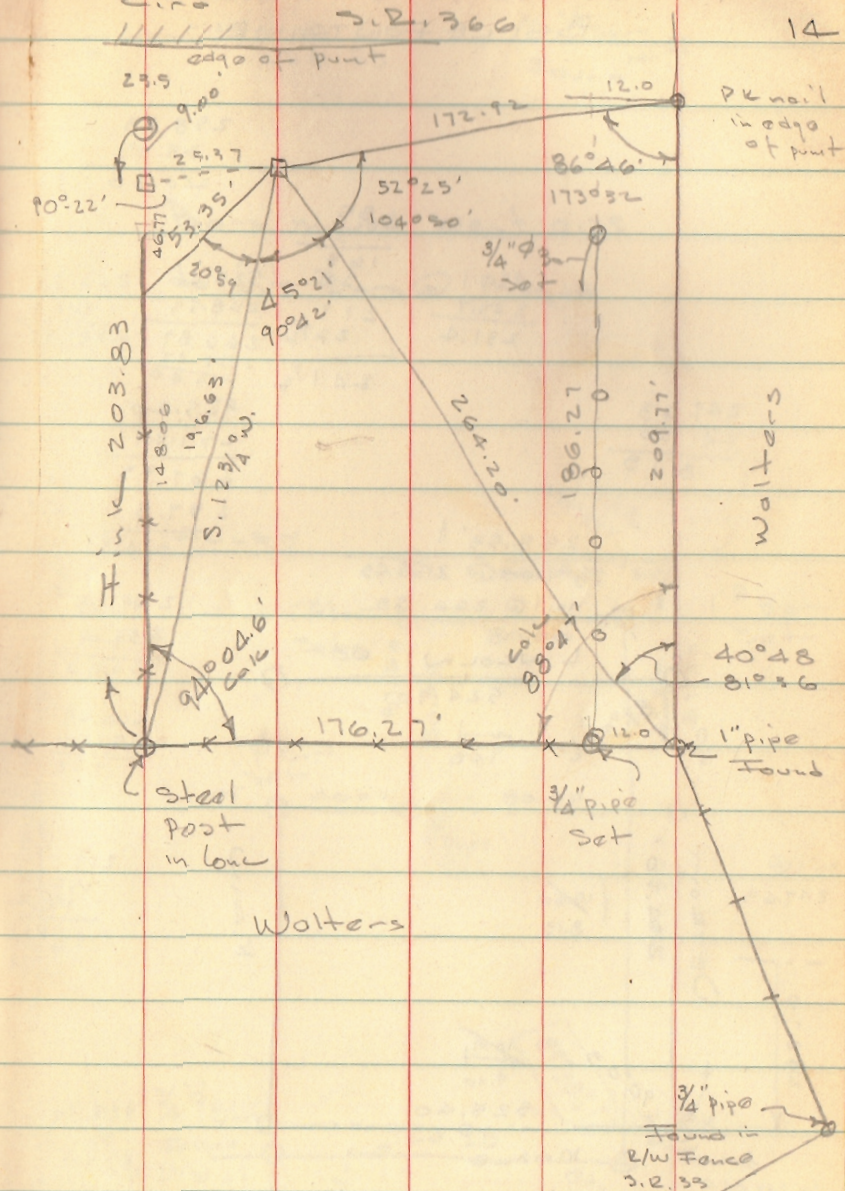
Weyandt Survey  
Stokes Twp

65.80	
66.20	
45.21	
209.77	20.59
23.80	
186.27	179.60
	88.47
	91.13
	32.5
	23.5
	9.0

INDEXED ON MAP  
3781

Dodge  
Cine

June 3, 1964  
14



INDEXED ON MAP  
3781



PT LOT 1615-1616-1617-1618  
BELLEFONTAINE

258.53  
38.25  
220.28

55  
5  
165  
54  
474.1  
242.7  
231.4

219  
22 1/2  
241 1/2

525.40  
258.53  
266.87  
257.47  
9.40  
525.40  
257.47  
267.97  
257.5

241.63  
241.50  
8.13

258.53'  
5/8" Bar @ 258.53  
Nail @ 266.58

LINCOLN 60

524.90  
9.08

Nail @  
249.63

474.10

10.60  
8.13

90°03'

7.40  
525.40

MAPLE 30

Nail @  
257.47

70

Main

495.40  
30  
525.40

INDEXED ON MAP

3795

Dodge  
Geolin

June 6, 1964 June 13, 1964

LINCOLN

258.53

5/8" Bar

Found

15

Bars moved West 0.25'  
to fit Bars @ Maple

ALLEY

80.00

89°56'  
179.53'

1" Bar  
Set

80.00

1" Bar  
Set

87.50  
80.00

87.50  
87.50

1" Bar  
Set

80.00

1" Pipe  
Set

80.00

241.50

241.50

3/4" Bar  
Found

0.25' W of  
Line

120.25'

89°53'

89°56'  
177.51'

3/4" Bar  
Found

0.25' W of  
Line

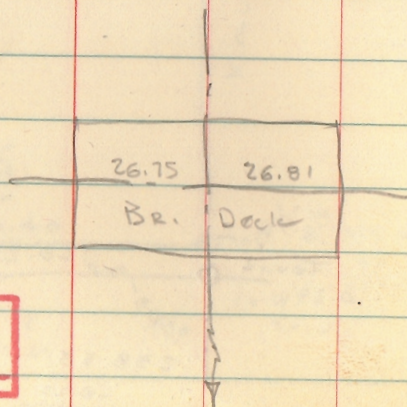
258.53  
-0.25  
258.28



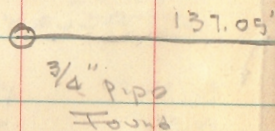
# GRESSNER SURVEY

## LAKE VIEW

113400  
 27.46  
 112472.54



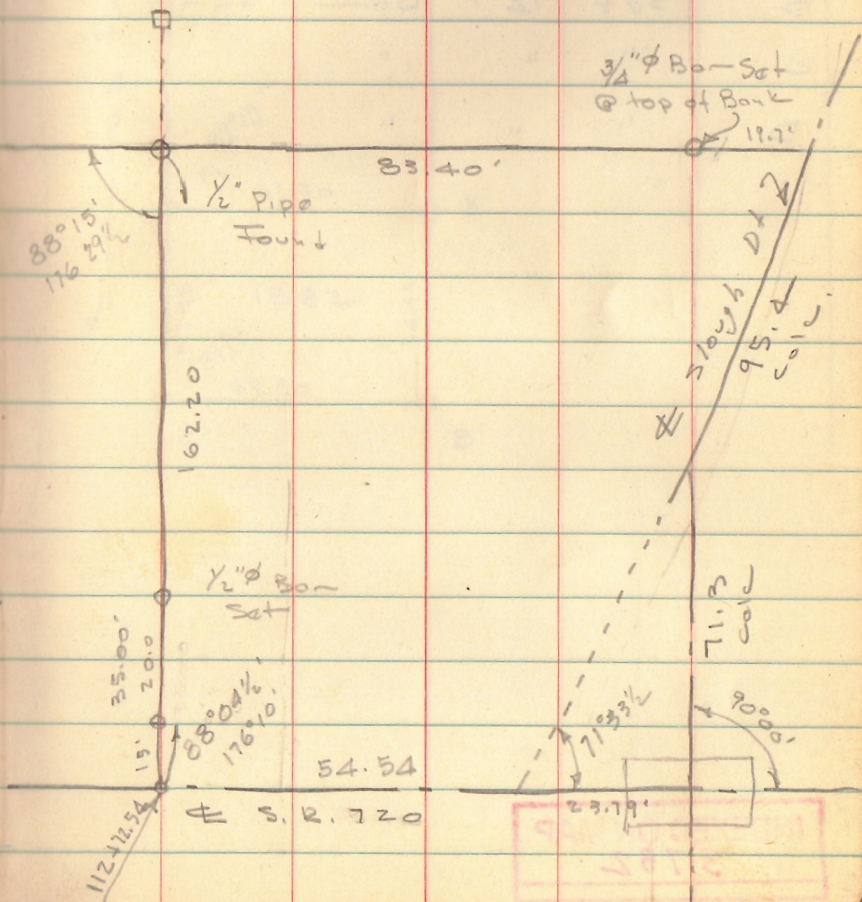
67.07  
 10  
 137.07



Dodson  
 Circle

May 8, 1964

16



INDEXED ON MAP  
 5680

9  
 49  
 11



LOT 1882  
CH. PDEWA No. 3

A = Remains of Hub Found

set  $\frac{3}{4}$ "  $\phi$  Bar

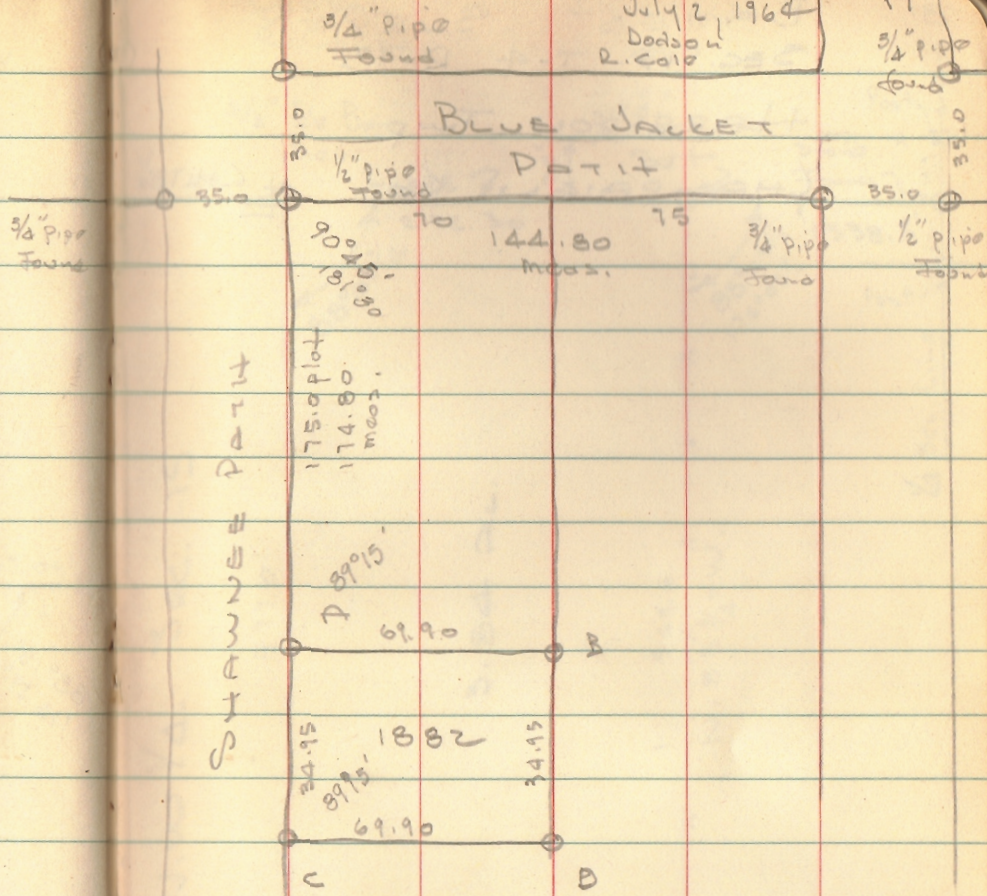
B set  $\frac{3}{4}$ "  $\phi$  Bar

C " " "

D " " "

July 2, 1964  
Dodson  
R. Cole

17  
 $\frac{3}{4}$ " pipe  
found



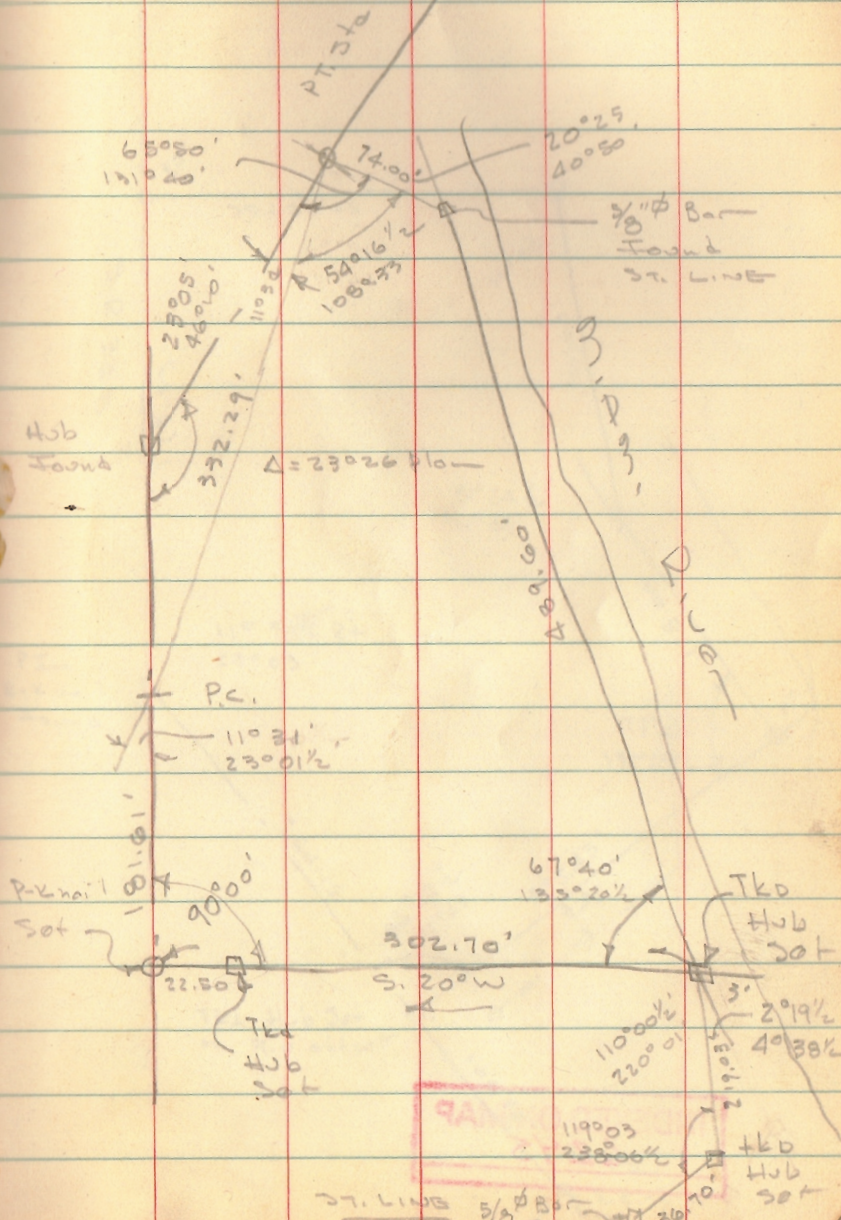
INDEXED ON MAP  
3782



JAMES SURVEY  
LAKE RIDGE

Dodson  
Crestline

July 14, 1962  
80° 19'



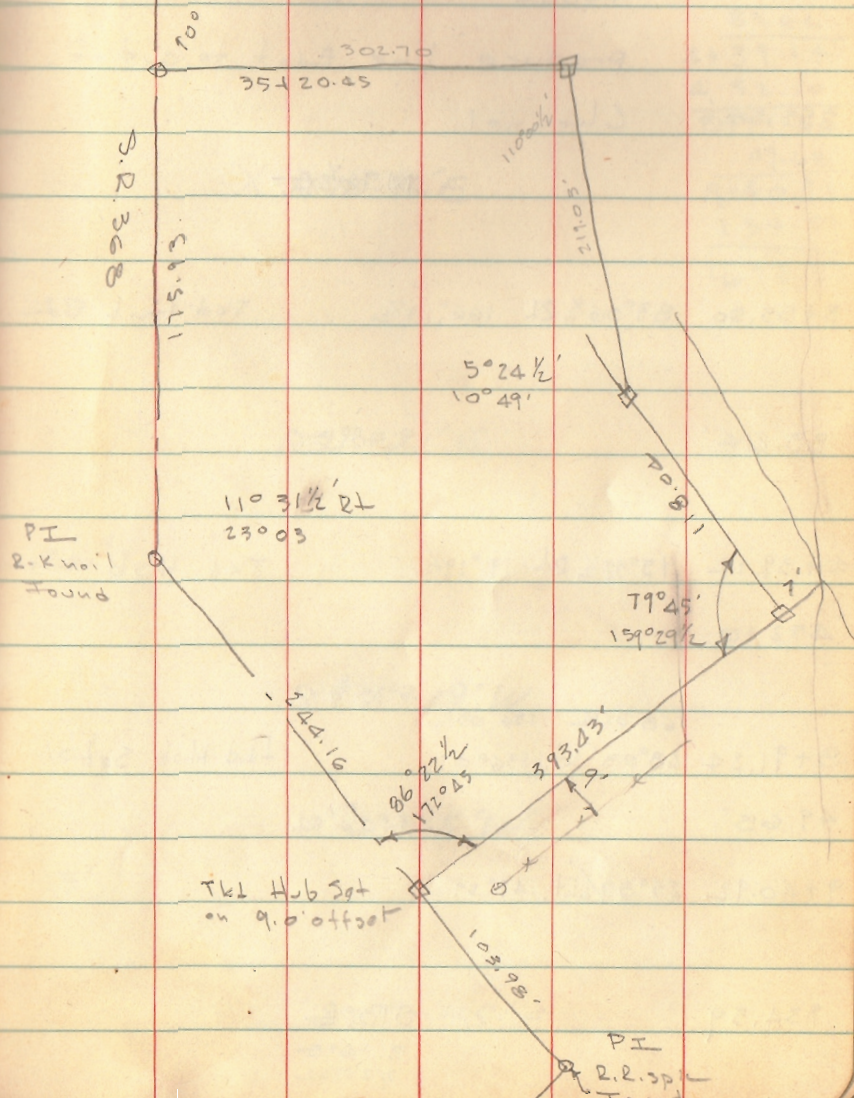
INDEXED ON MAP  
6245

MAP



JAMES CONTD.

20



INDEXED ON MAP  
6245



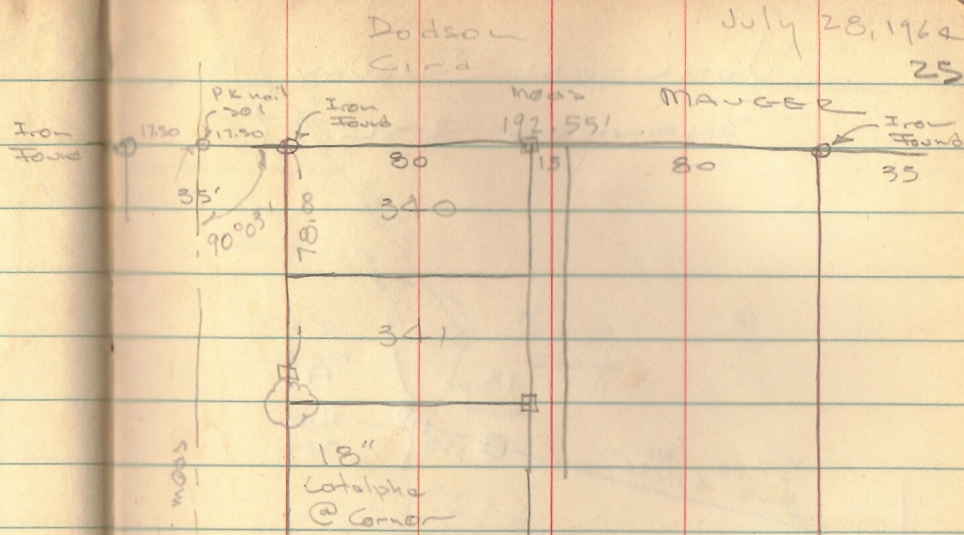
LOT 340-341

ORCHARD ISL

FOR

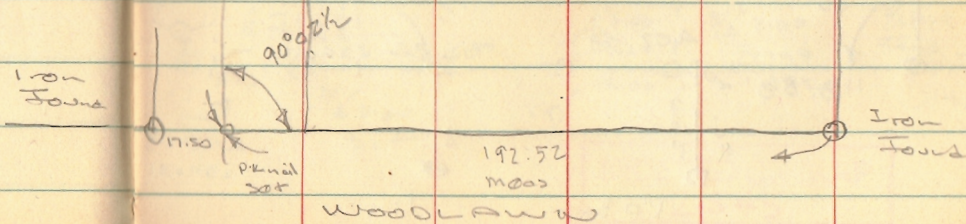
ALBERT HOLLIS

179
17.5
192.5



July 28, 1964  
25

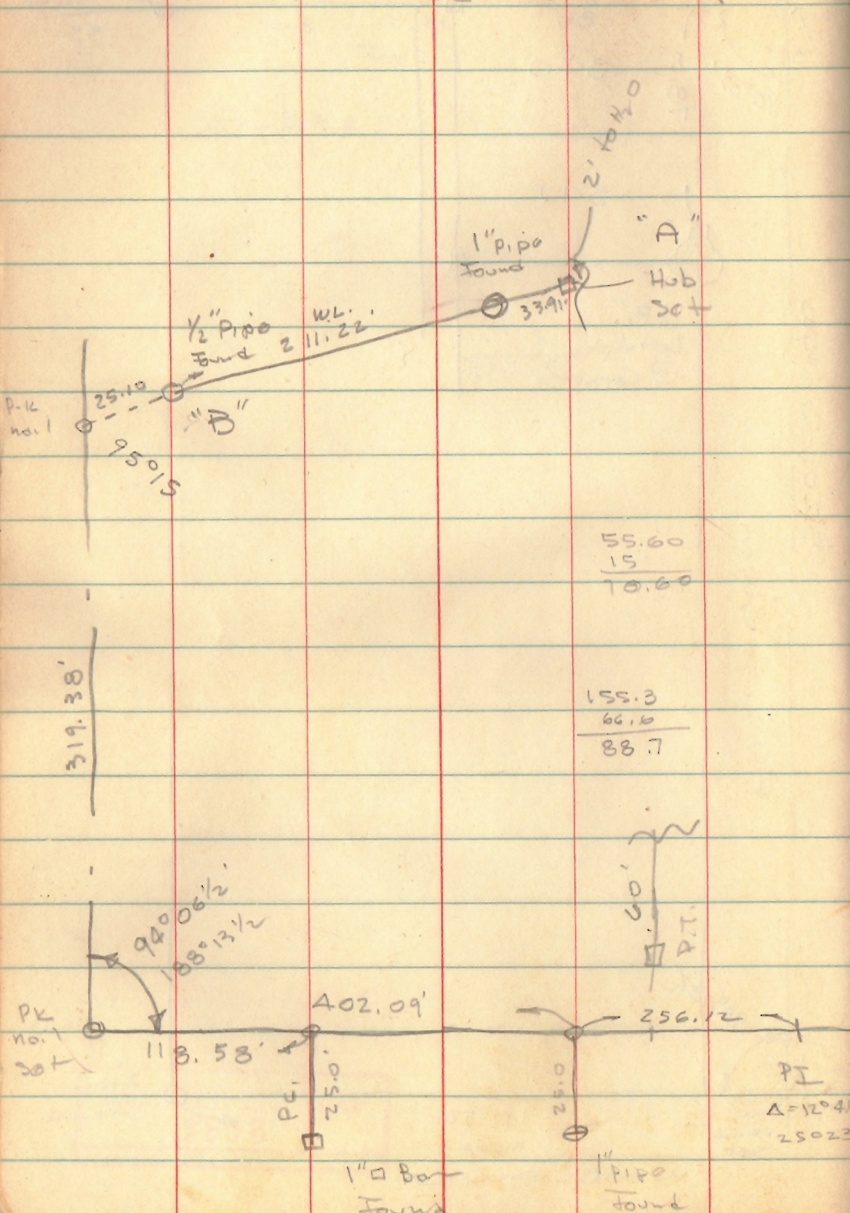
INDEXED ON MAP  
3808





JOHNSON SURVEY  
SHAWNEE ISL.

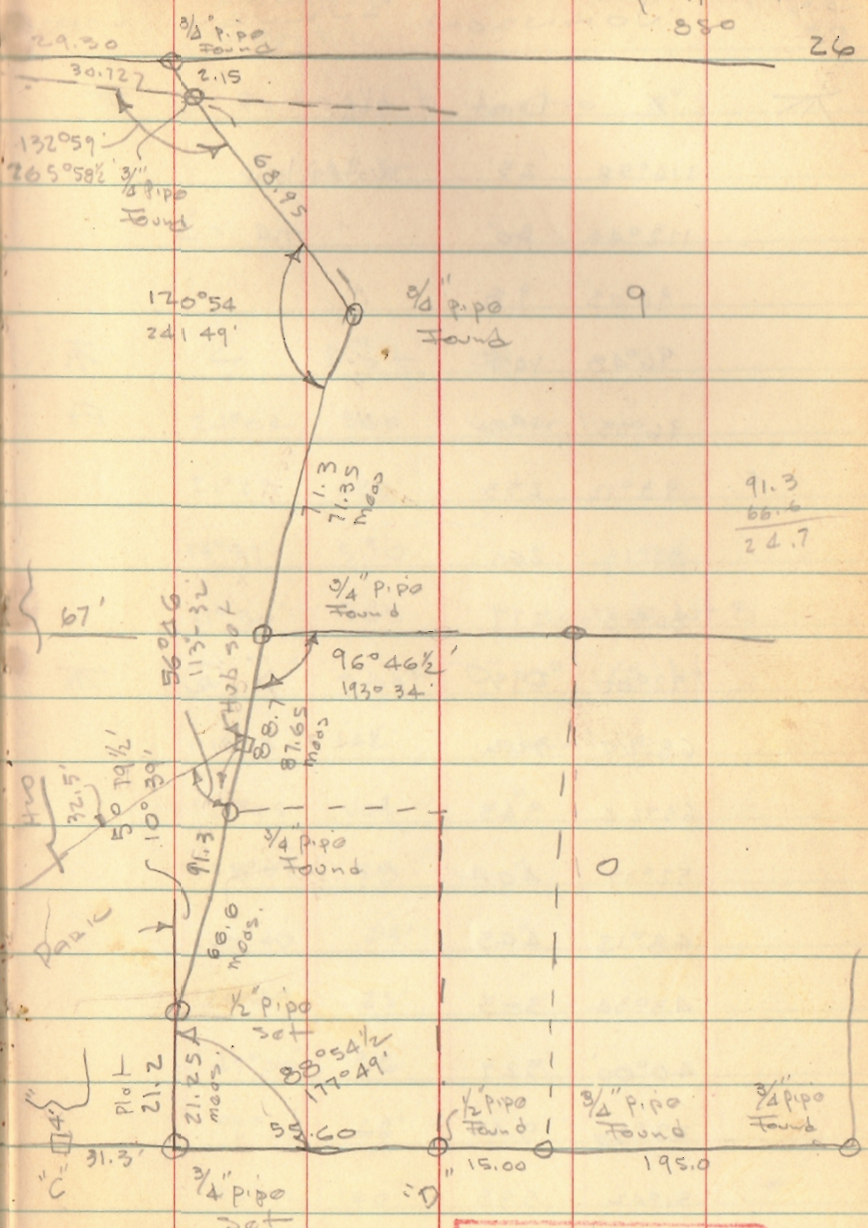
July 29, 1964  
880 26



55.60  
15  
-----  
70.60

155.3  
66.6  
-----  
88.7

PI  
Δ = 12° 41'  
25023



91.3  
66.6  
-----  
24.7

INDEXED ON MAP  
2545



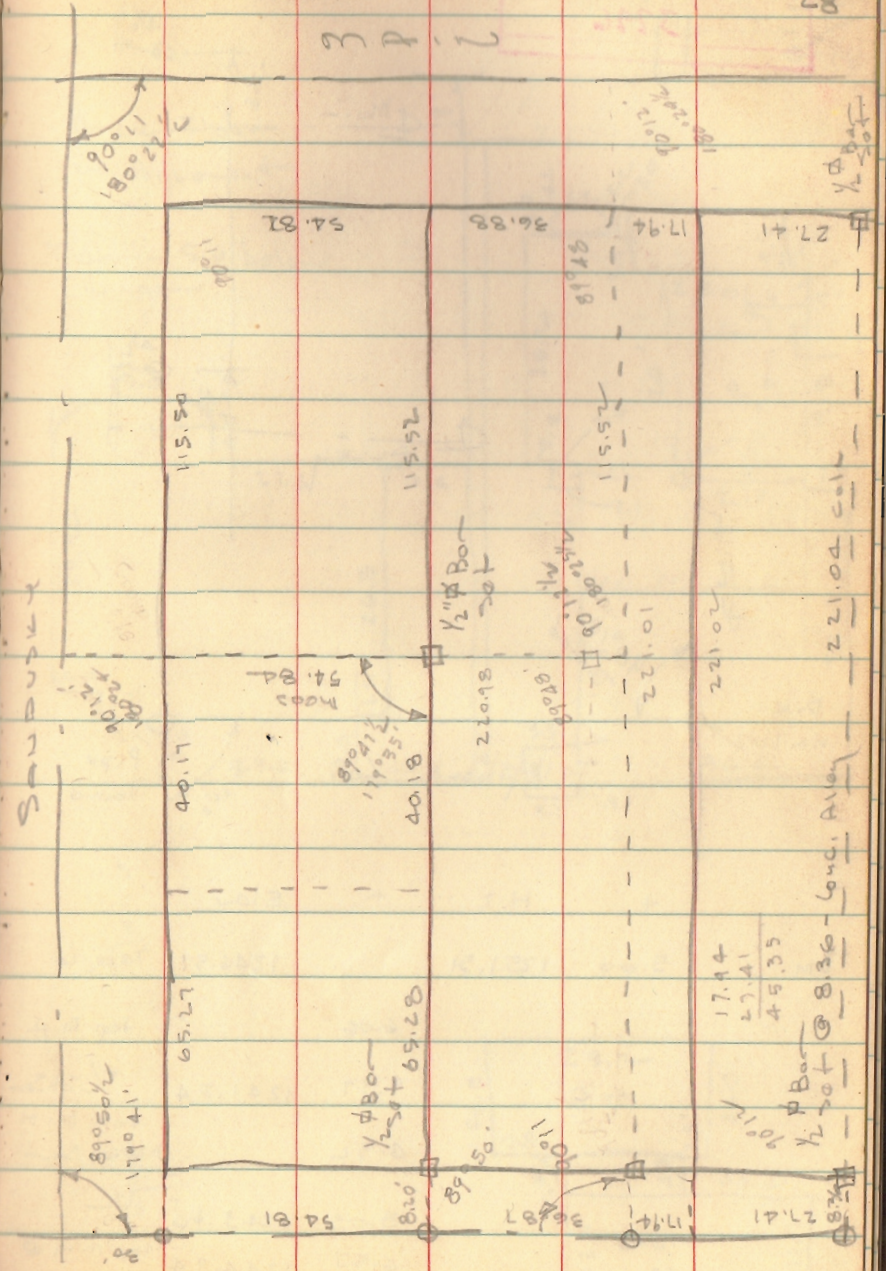
STANDARD OIL Co.  
 Cor. MAIN & SANDUSKY  
 BELLEFONTAINE

220 } 1.000  
 880  
 1208  
 220 } 0033  
 1730  
 660  
 700  
 600  
 0001  
 275  
 55  
 0033  
 165  
 165  
 1815  
 90° 11'  
 89 48'  
 90 10 1/2'  
 89 45 1/2'  
 358-119

30  
 257.54  
 164.43  
 40 54.81  
 65.07  
 221.10  
 40  
 229.19'  
 +.00425/FT.  
 40  
 40  
 257.52  
 40 54.82'  
 -.0033/FT.  
 40  
 257.50  
 57.52  
 18  
 4.73  
 164.43  
 63.07  
 30  
 257.50  
 55.00  
 18  
 55.82

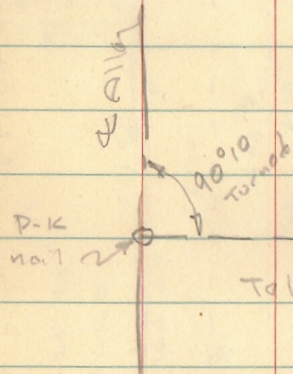
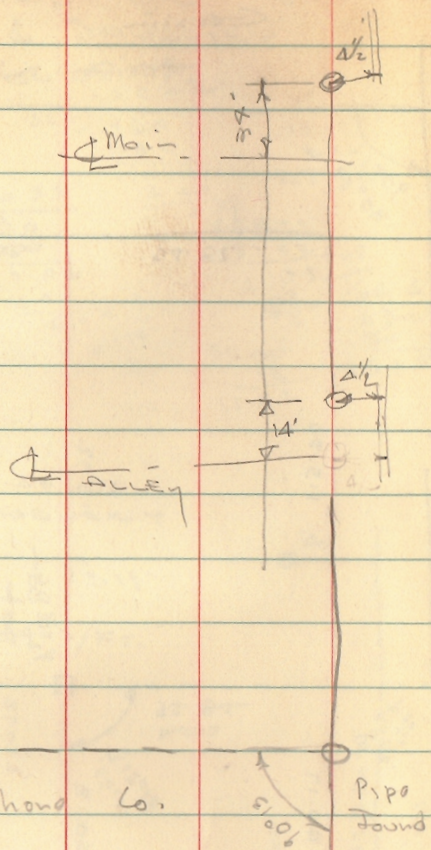
INDEXED ON MAP  
 3726

Dodson  
 Geolin  
 Aug. 8, 1964  
 28



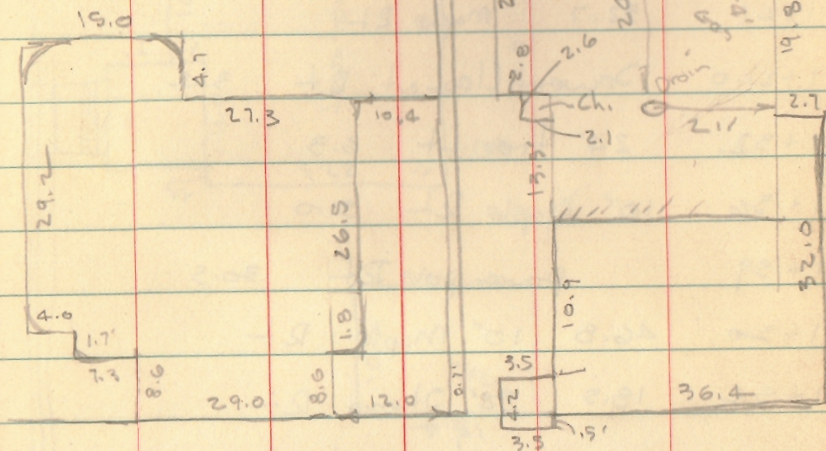


INDEXED MAP  
3796



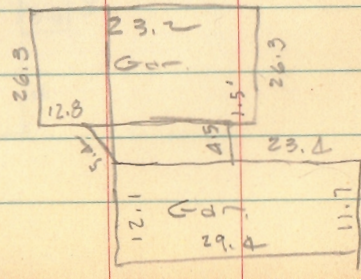
	+	HI	-	Elev	
B.M.	5.00	1251.51		1246.51	Tele Co.
			6.06		top M.H.
			9.97	1241.54	1/2 St. Sew.
			4.32		top M.H. N. of Sand
			8.05	1243.46	F/L
			6.57	1244.94	top m.H. @ Alley 620 to

Brick Floor  
in Basement  
Floor - 5.6 below  
window



11.3  
29.0  
11.8  
42.1

44.9  
6.1  
38.7

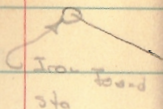


29  
water motor



CLAGG SURVEY

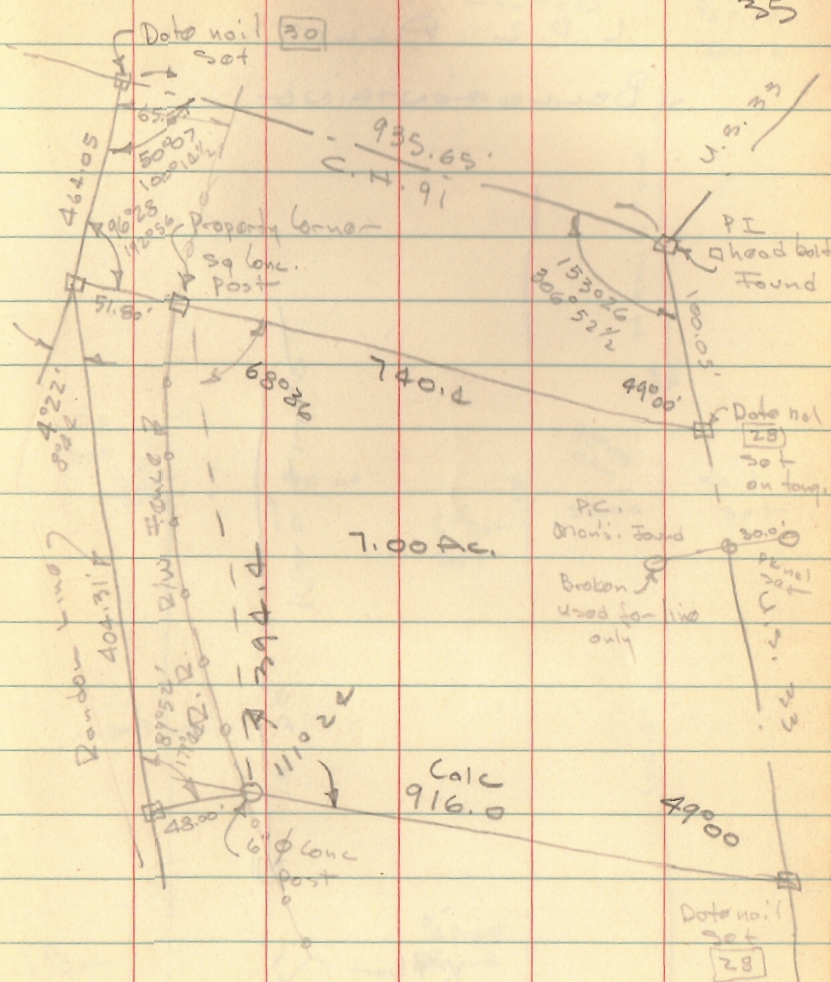
HARRISON TWP.



Dodson  
Tavis

2 hrs Sept. 1, 1964  
Sept 2, 1964

35



INDEXED ON MAP  
6927

INDEXED ON MAP  
11.5



SURVEY OF  
LOT 3715 & PT 3716

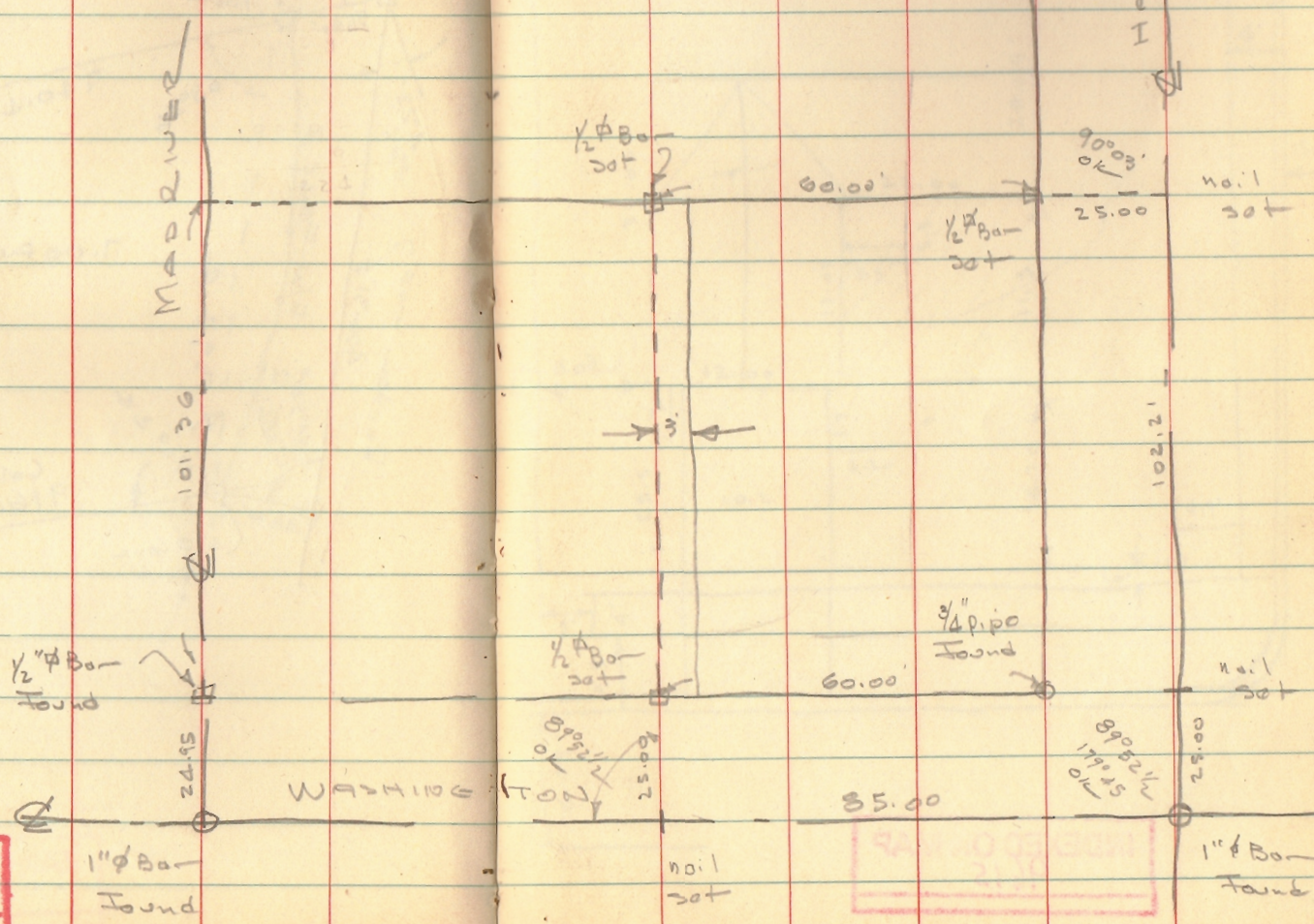
L.P. 2 ALLOT  
BELLEFONTAINE

DODSON  
GOSTIN

34r. 9/5/64

36

COLTON  
3/4" pipe  
Found



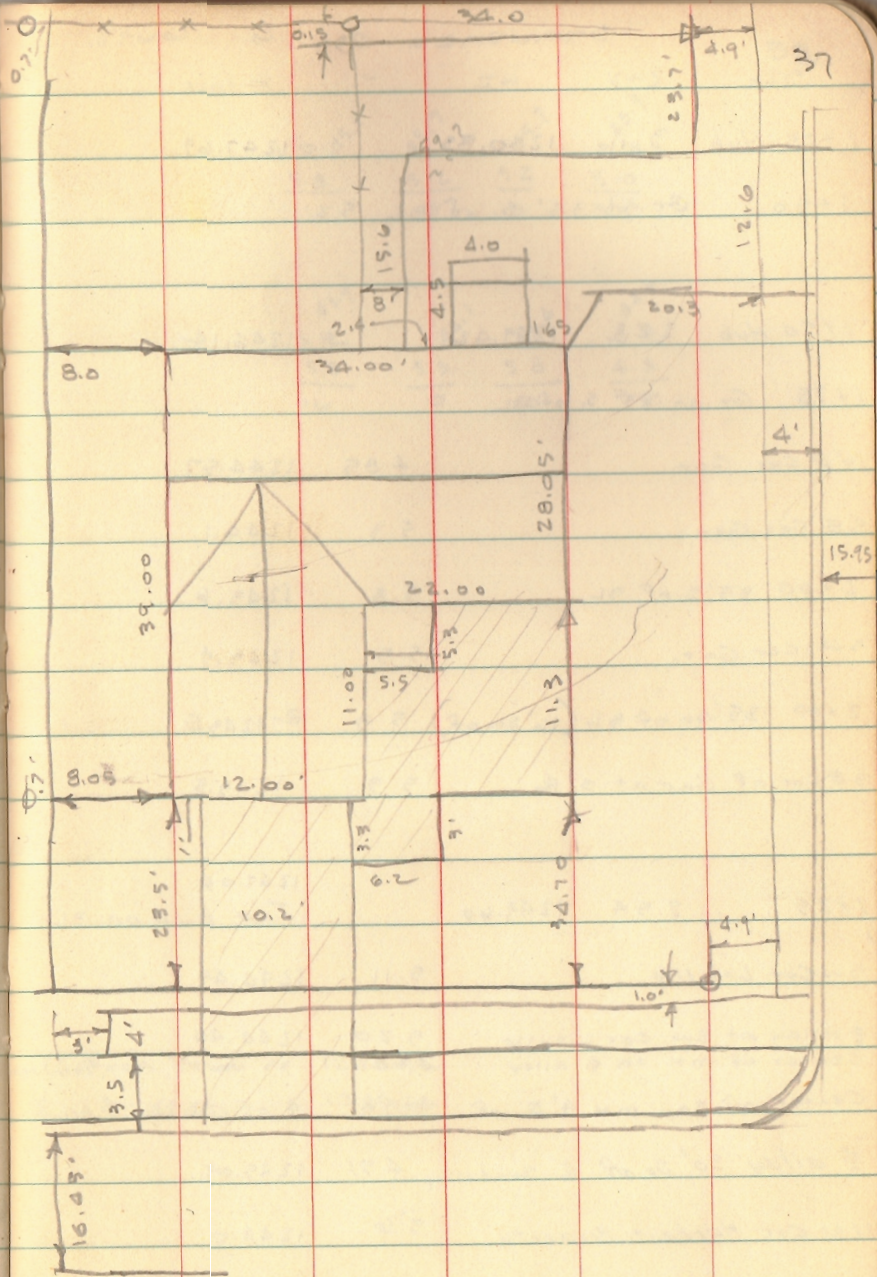
INDEXED ON MAP  
9615

INDEXED ON MAP  
9615



LOT 3715 & PT 3716

BELLE FONTAINE

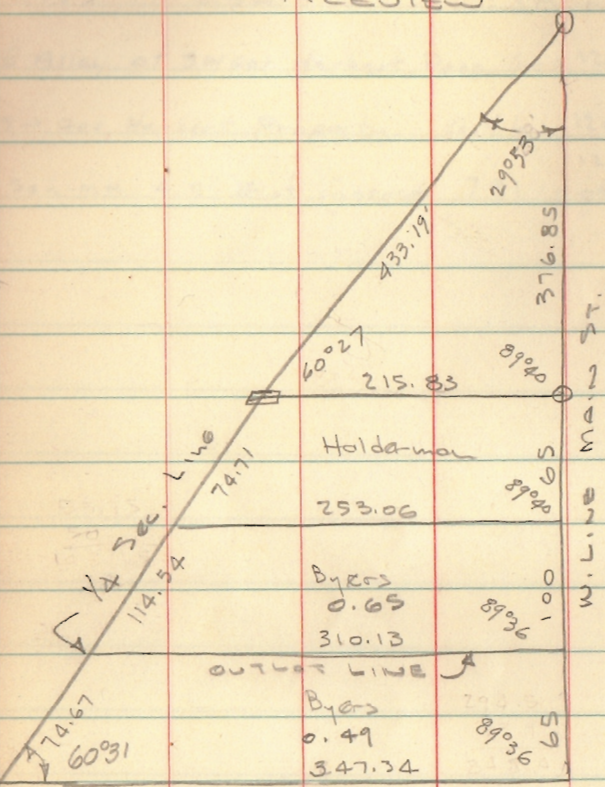


INDEXED ON MAP  
9615



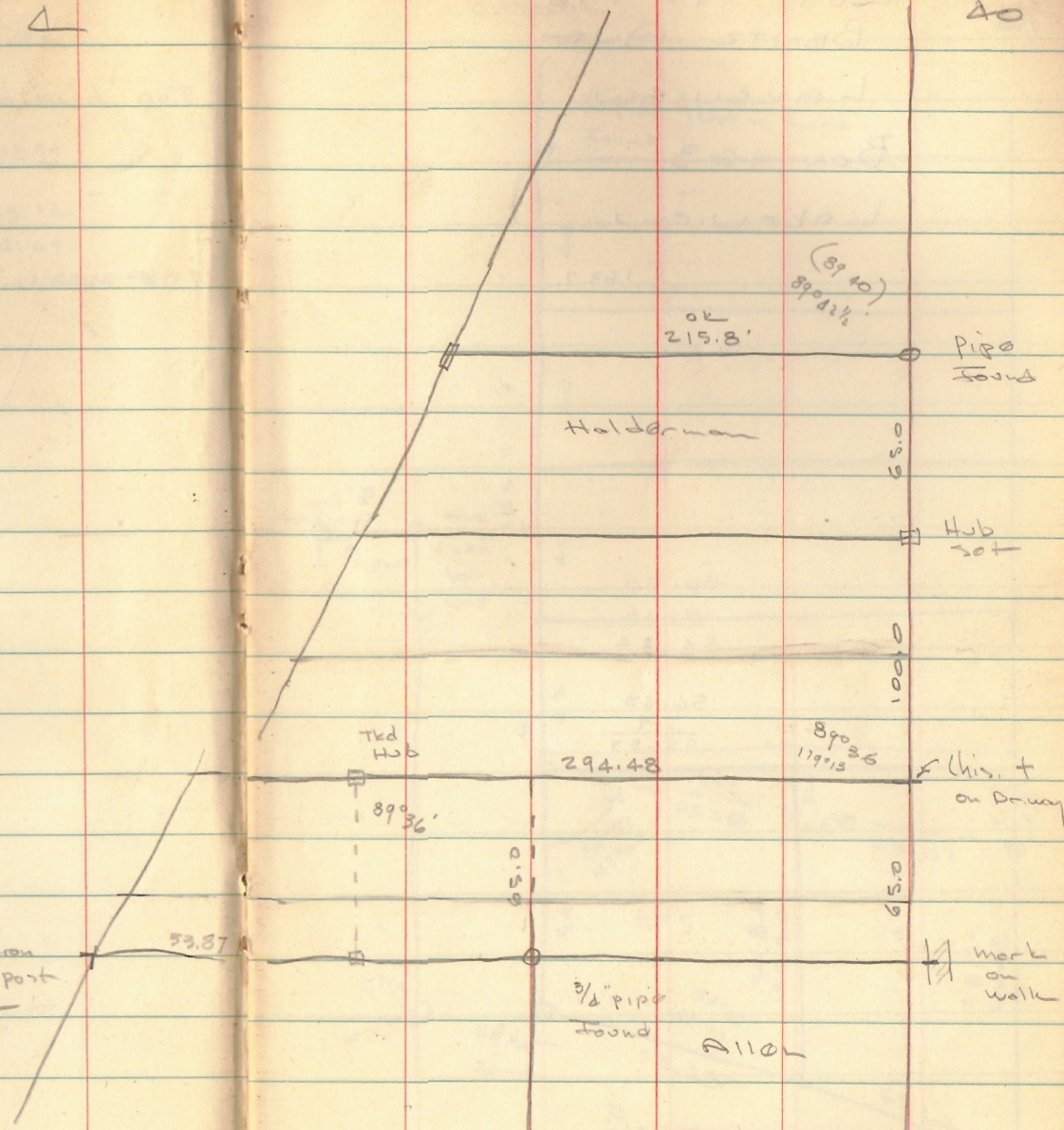
# BYERS - OUT LOT Δ

## LAKEVIEW



Iron Cor. post  
OK

53.87



INDEXED ON MAP  
1685

INDEXED ON MAP  
2780



LOT 595-596  
 BENTZ AVE  
 LAKEVIEW  
 Box 163  
 Lakeview

163.7

60.50  
 6.16  
 ---  
 54.34

56.43  
 9  
 ---  
 55.53

5.26  
 9  
 ---  
 6.16

3/4" Pipe  
 Found

40.0

3/4" Pipe  
 Found

40.0

Used  
 for  
 line

153.7

40

40

40

43

43

54.1'

98.8'

100.0

55'

55.2'

52.6

45'

45.2'

15.7

9.57

0.27

59.5

54.3'

55.34

59.6

55.53

56.43

84.96'

165.33

55.28

45.22

Dodson  
 Geostic

9-19-69

41

BENTZ DR

INDEXED ON MAP  
 3780



595-596

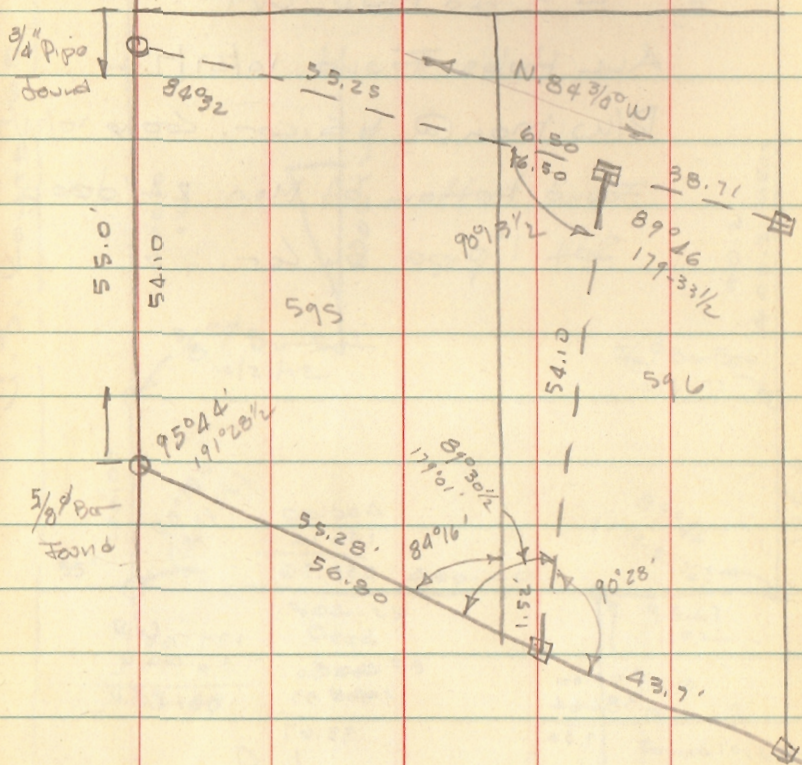
Cont'd.

9-19-64

42

$$\begin{array}{r} 56.80 \\ 55.28 \\ \hline 1.52 \end{array}$$

$$\begin{array}{r} 49.27 \\ 6.20 \\ \hline 38.71 \end{array}$$

$$\begin{array}{r} 45.22 \\ 1.52 \\ \hline 43.70 \end{array}$$


INDEXED ON MAP  
3780



MACGILVERY SURVEY  
LAKE TOWNSHIP

Dodson 9-26-64  
Cooslin 70° 43'

35' R/W Mon  
183+00

99.97

146.24

Hub Found  
Replaced w/ 1" Pipe

10/21/72 400.0'

89° 46 1/2

90° 13 1/2  
(180° 27')

□ = T&D Hub Jet

All Hubs Found 10/21/72

R/W Mon @ N.E. Cor. Coos 10/21/72

Found Bottom of Mon 24" deep

Set 1" pipe on Cor.

J.S. ROAD

400.0  
OK

North

5/8" Bar Set  
10/21/72

5/8" Bar Set  
10/21/72

400.2  
+ 0.2  
400.2  
+ 0.2  
400.2  
+ 0.2  
400.2

400.00  
106.24  
293.76

35' 100.00  
90° 13 1/2  
(180° 27')

400.00

R/W  
Mon.  
188+00

304.25  
Dead  
304.33  
Mon

89° 46  
(179° 52 1/2)  
95.67  
OK

Pipe  
Found  
Found 10/21/72

400.00  
382.64  
17.36

400.00  
304.33  
95.67

179.60  
90.13 1/2  
89.46 1/2

Patrons  
Mutual

INDEXED ON MAP  
3800







# HOSSELMAN SURVEY

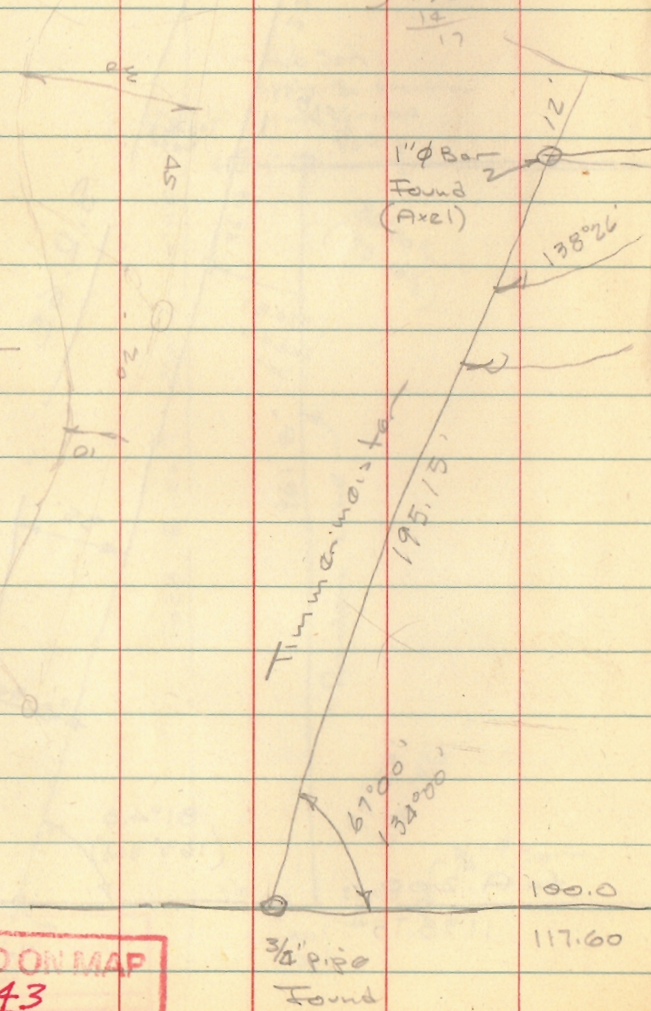
WOLF ISLAND

See Pg 56

369 60	179.60
128 10	103.14
241 50	76.46

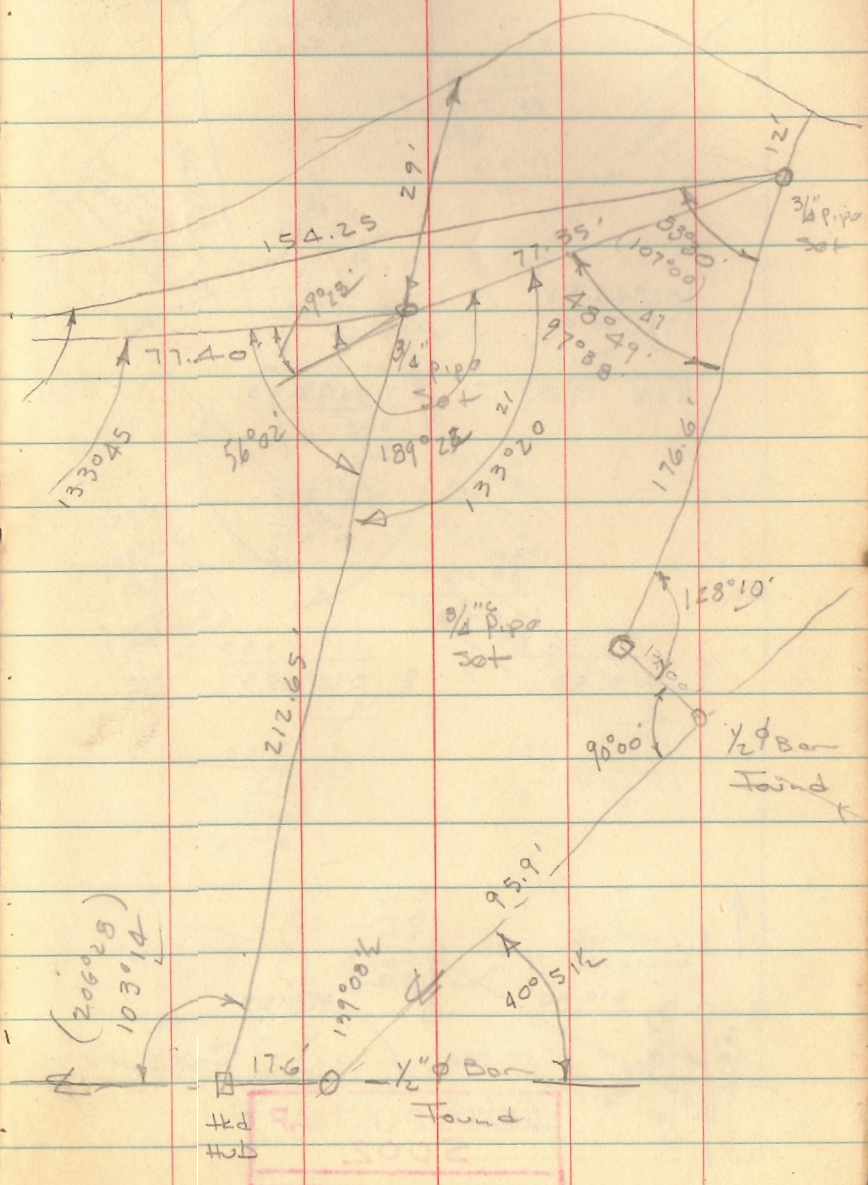
2	77.12
	154.25
	14
	17

133°20'
48 49
241 50
90 00
139 09
10 46
-174



Dadao  
Vern Hosselman

10-11-64  
45



INDEXED ON MAP  
22 43

2006



SHOCKEY SURVEY  
JEFFERSON TWP.

Dodson  
Greenlin

10/17/64

46

Hub set  
in fence

Large  
Post

Stump

475.01'

102°45.33

102°45.33  
205.931  
308.16

66°27.4  
199.21.45  
18  
19  
18  
81.45  
6  
21

567.51' to center of stump

102°45.33  
139 36.0  
117 38.5

358 119.83

102°45.33  
308.16  
30  
8  
6

360  
58.48  
418.48

136  
12  
10  
15

139°36.0  
279°12.6  
58°48

139°36.0

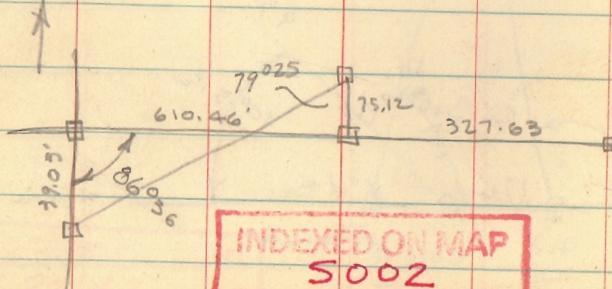
117°38.5  
235°17.4  
352°55.5

117°38.5

671.29

139 36  
418.48  
3  
11  
9  
28  
27

117.38.5  
352°55.5  
3  
5  
3  
22  
21  
115.5  
9  
25  
24  
19

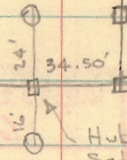


L.H. 2302

R/W Mon.  
Fore sight

297.82'  
S. 7 1/2° E

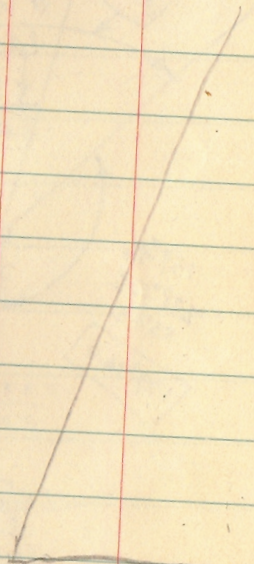
R/W Mon.  
Sta 42+00





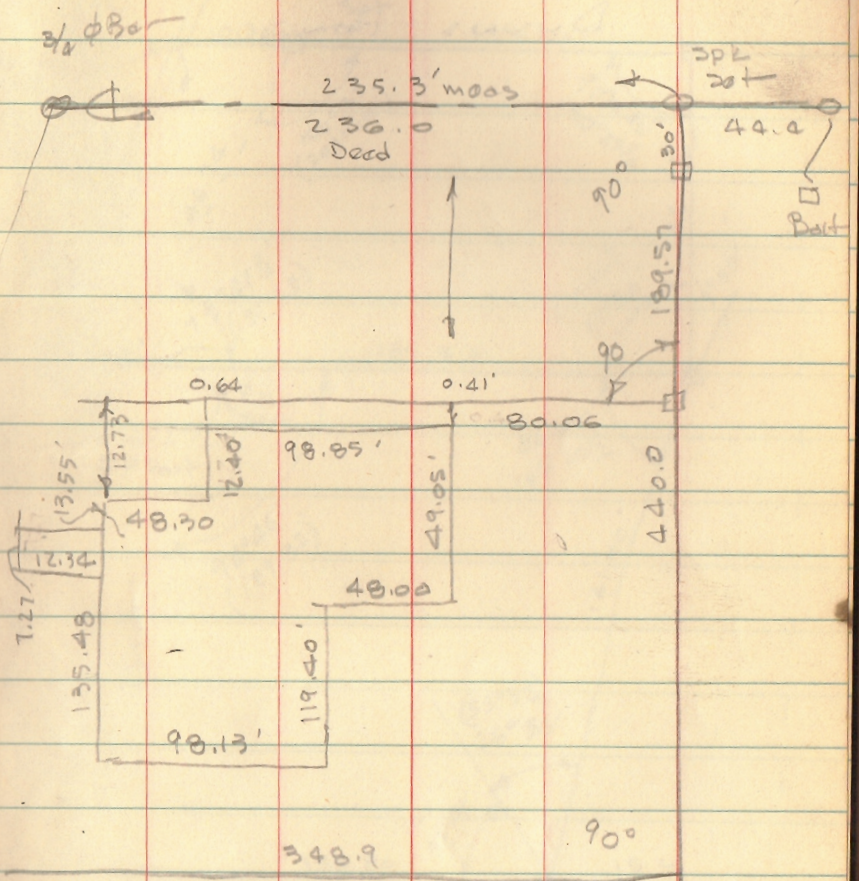
BELLE-AIRE LANES  
Building Location

280.4  
236  
44.4



INDEXED ON MAP  
6666

Dodson  
Coastline  
10/22/64  
47



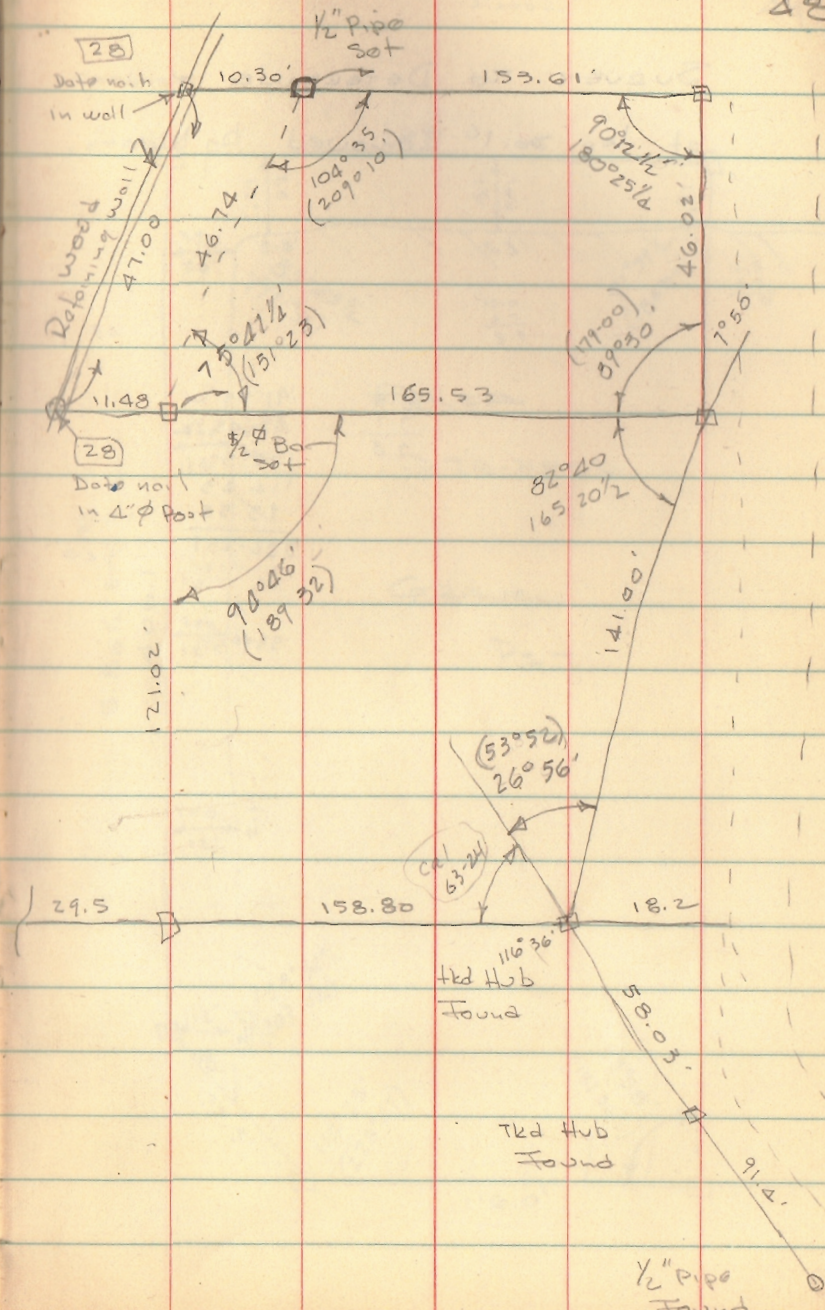
INDEXED ON MAP  
1181



TRACY SURVEY  
DUNN'S POND

10-24-64

48



INDEXED ON MAP  
1787



YOMO SURVEY

PERRY TWP.

V.M.'S 13432

ALLEN TO YOMO

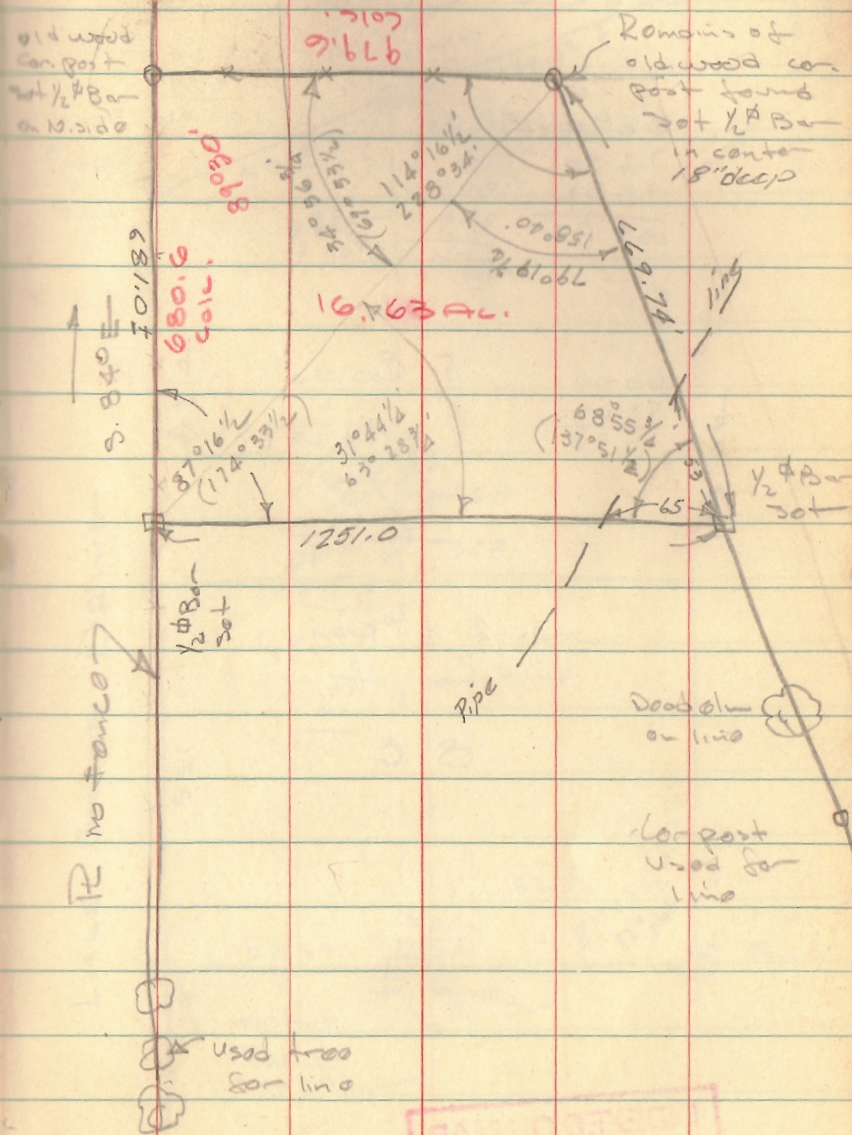
89 60  
87 10  
244

INDEXED ON MAP  
4511

Dodson  
Cession

11/7/64

750 50



INDEXED ON MAP  
4511



Pt Lot 31-38 SHAWNEE ILL.

Don Markley

473 E Northern Ave

88°00		179 60
72 30		78 59
98 32	359 60	101 01
<u>259 02</u>	<u>259 02</u>	
	100 58	

60.00		60.00
58.62		57.25
<u>138</u>		
	2 ) 117.25	58.62
	10	
	17	
	<u>10</u>	
	12	
	57.55	
	2 ) 115.1	
	10	
	15	
	<u>14</u>	
	11	
	10	

Dodson  
Goodlin

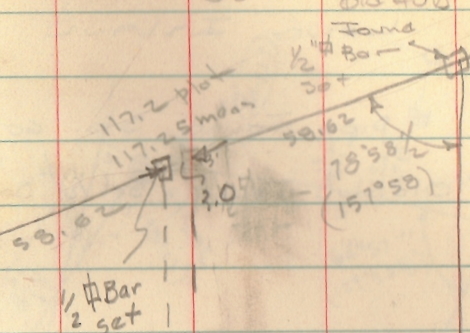
11/7/84

680

old Hub

51

3/4" pipe  
found



old Hub  
found  
1045

59.4

37

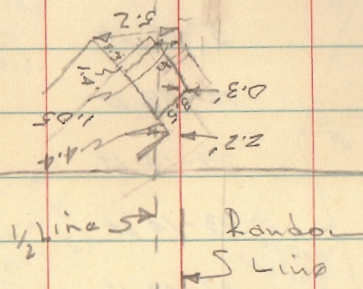
0.8 L

LAKE STORE DRIVE

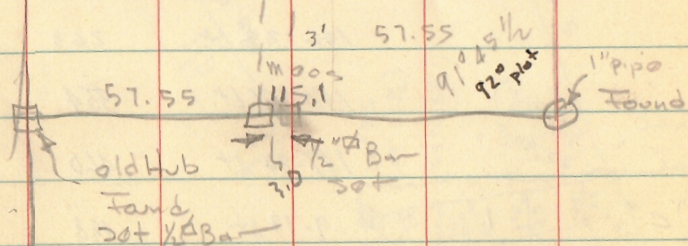
55.

38

55



70' E 81



old Hub

found

20' 1/2 Bar

set

1" pipe  
found

INDEXED ON MAP  
3744



BAYLESS SURVEY  
PERRY TOWNSHIP

18.31

89.00  
65.48  
24.12

1.09635

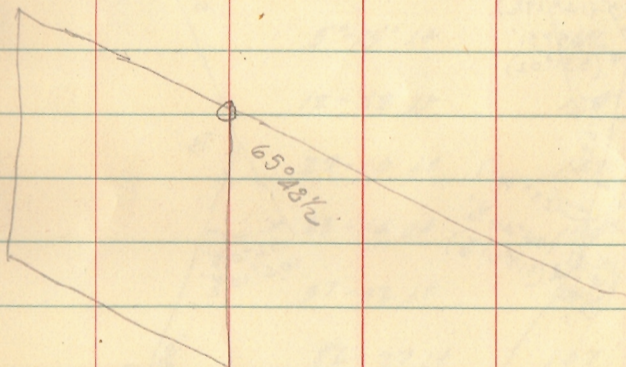
33

328905

28905

Dec. 24' x 33' =

36,179.55



INDEXED ON MAP

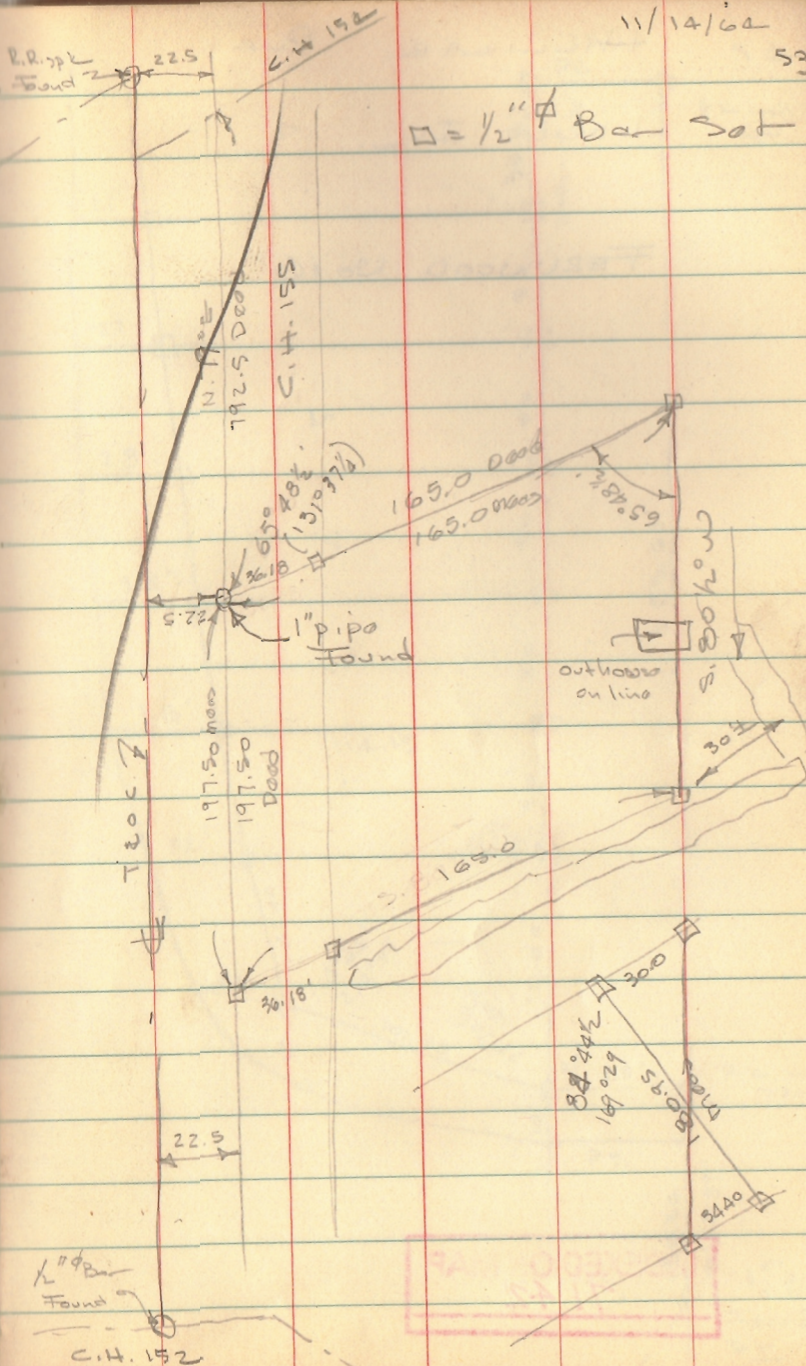
3805

11/14/62

53

R.R. 1/2  
Found 22.5

$\square = \frac{1}{2}'' \#$  Bar set



L<sup>#</sup> 42  
Found

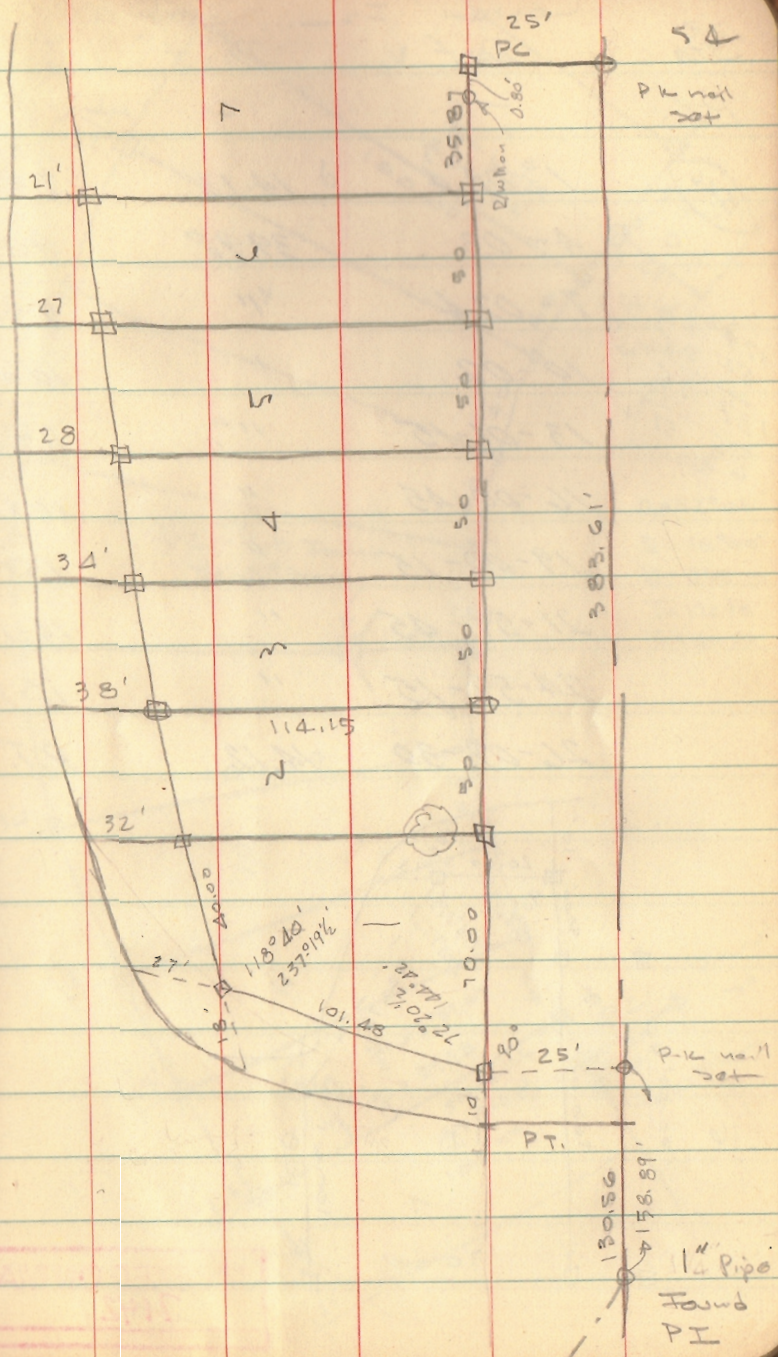
C.H. 152



HILLIER PLAT

LONG IS.

FERNWOOD No. 6

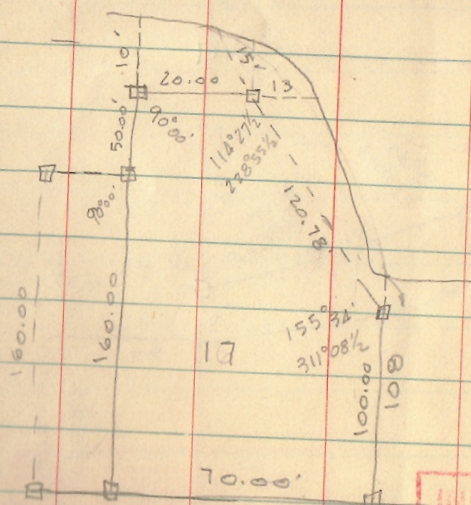


INDEXED ON MAP  
4451

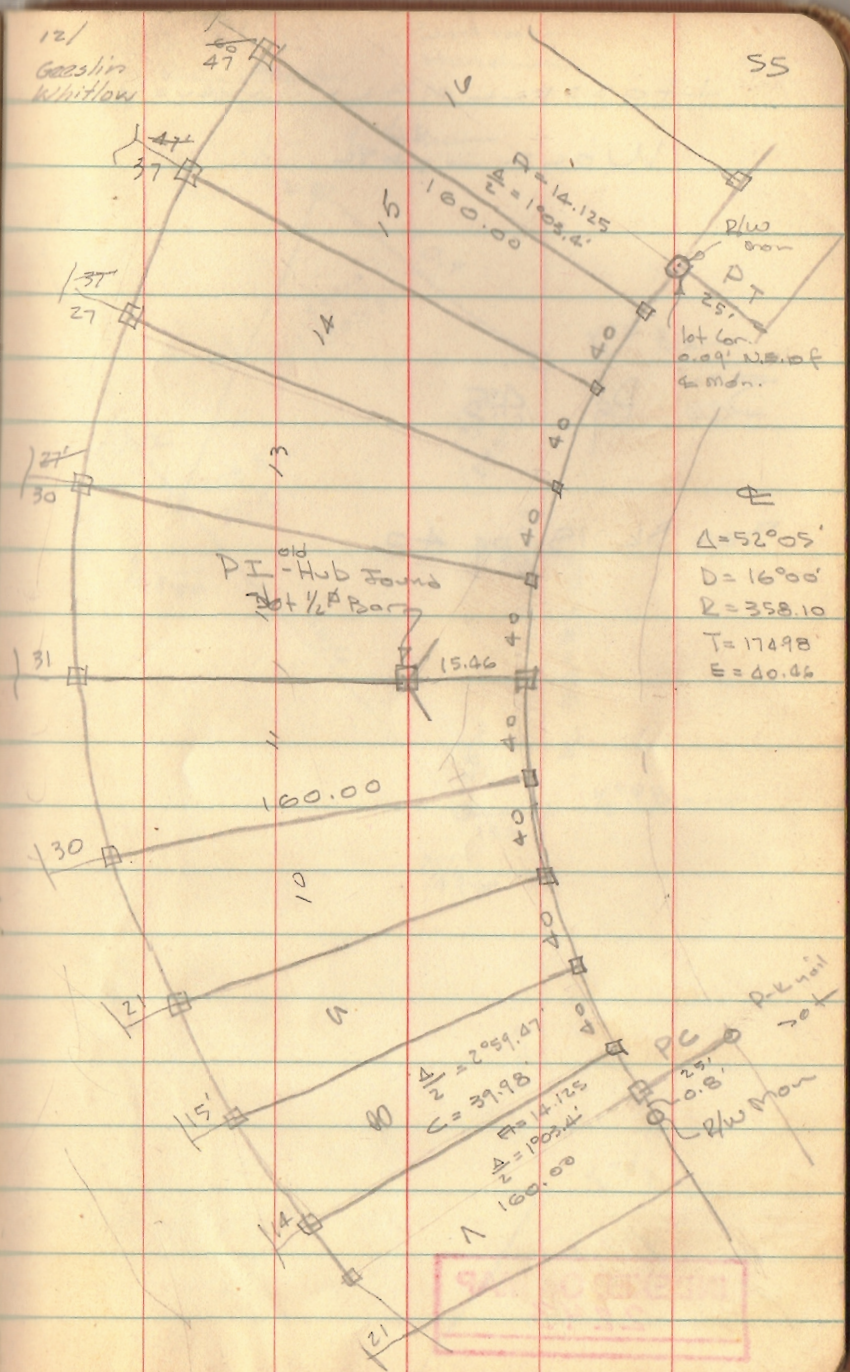


Sta	Low Def	Conv Dist	Lot
P.C.			
(5.46)	1°-03.4	14.12	7+8
	4-03	39.98	8+9
	7-02.4	"	9+10
	10-02	"	10+11
	13-01-15	"	11+12
	16-00-45	"	12+13
	19-00-15	"	13+14
	21-59-45	"	14-15
	24-59-15	"	15-16
	26-02-30	14.12	P.T.

179 60  
52 05  
127 55  
63 57



INDEXED ON MAP  
4451



SAVING SYSTEM



HOSSELLMAN Survey  
Wolf Isl.

See Pg 45

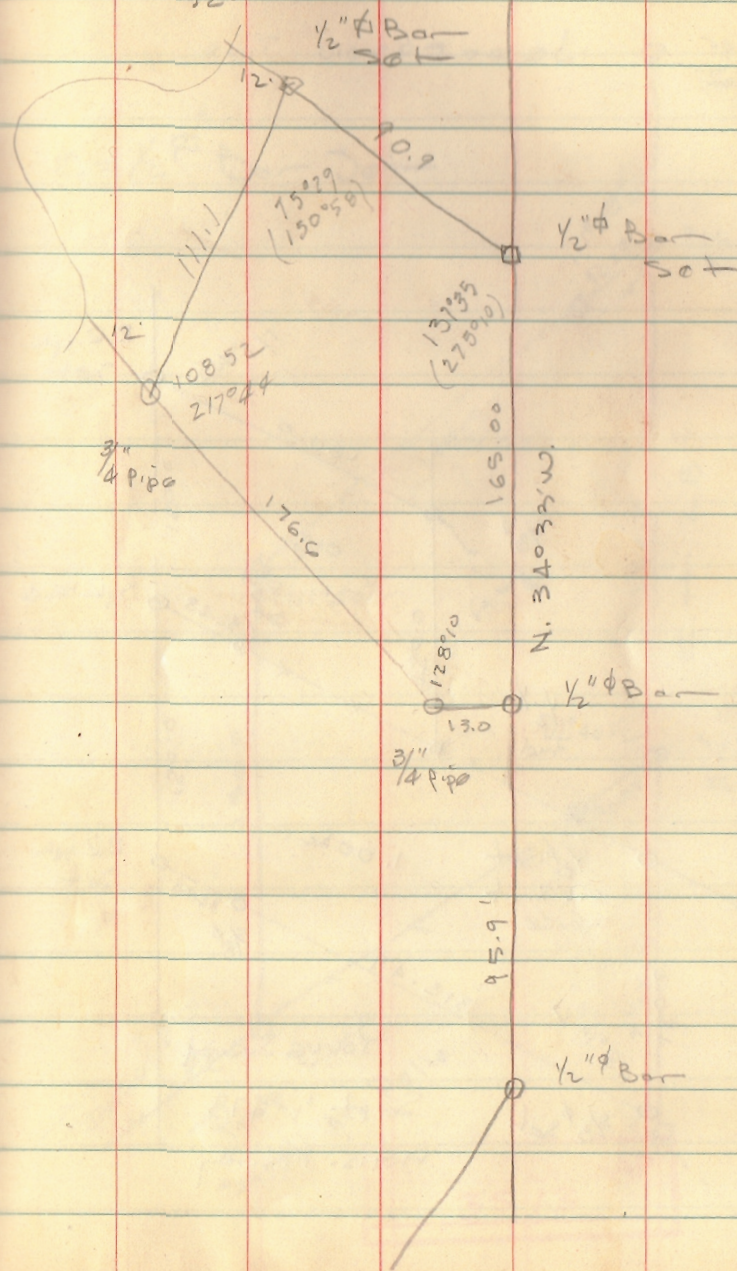
See Bk 15, pg 40

INDEXED ON MAP  
2243

12/13/64  
Rain 300t  
320

Dodson  
Hosselman

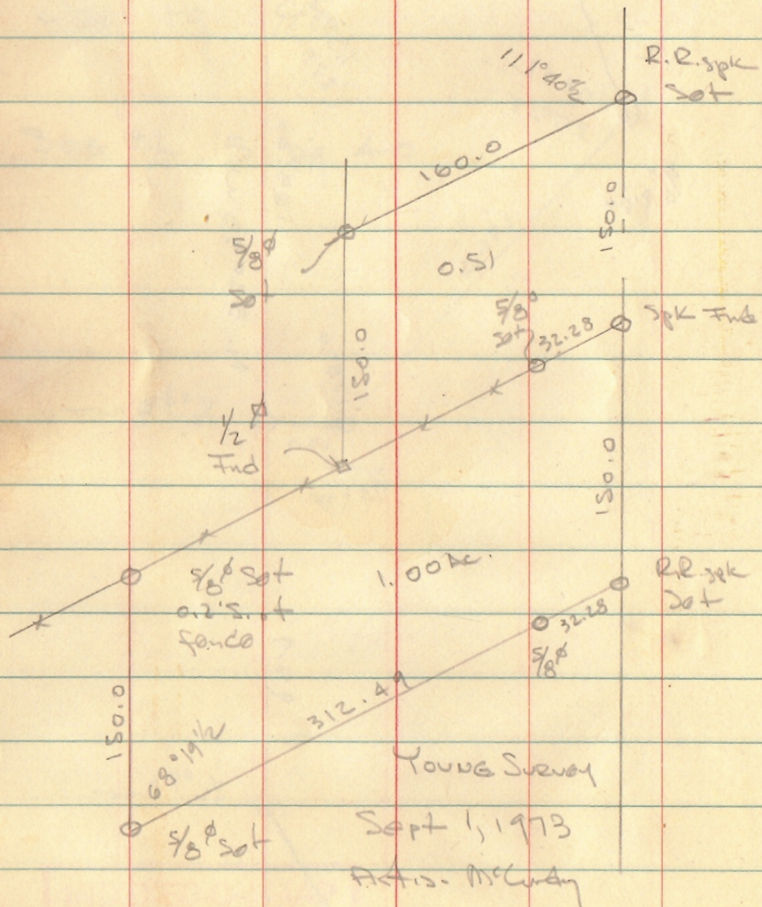
56





SCHLUMBUH Survey

JEFFERSON Two

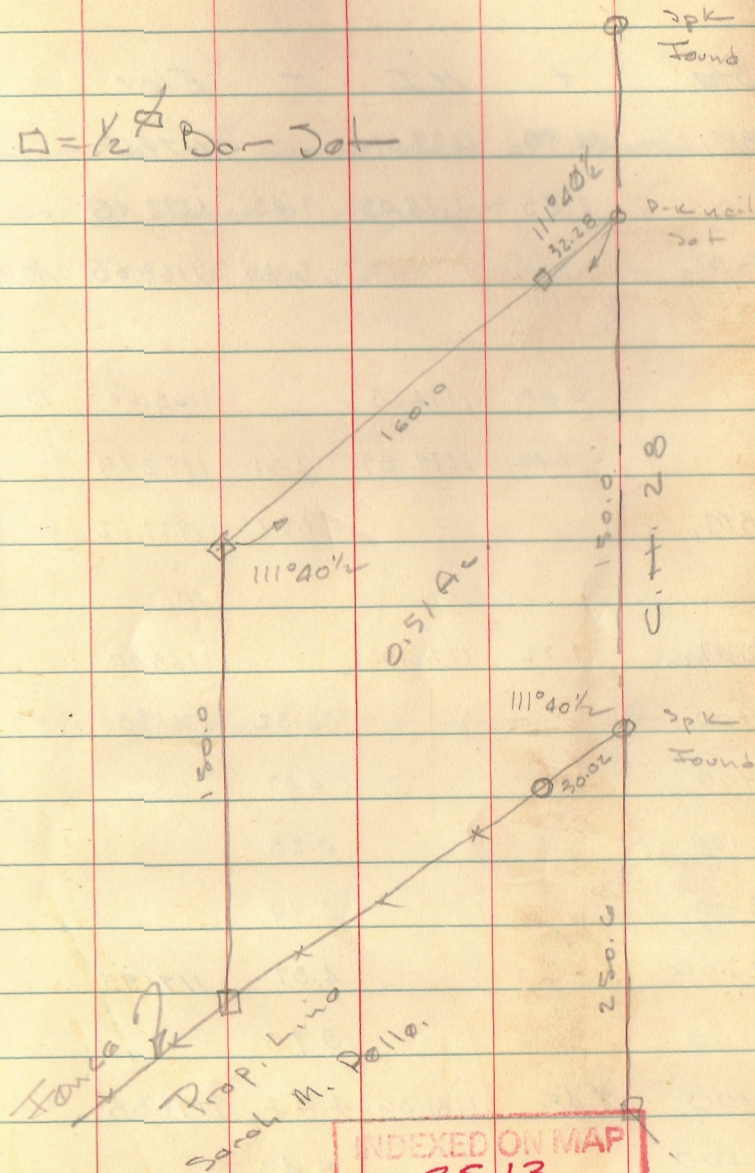


D. Dodson  
J. Whitlow

12/17/62  
150

57

$\square = 1/2$  Bar Set



INDEXED ON MAP  
3513



GROTH CORP CONT'D.

Dodson  
Coil

V9/65  
20°

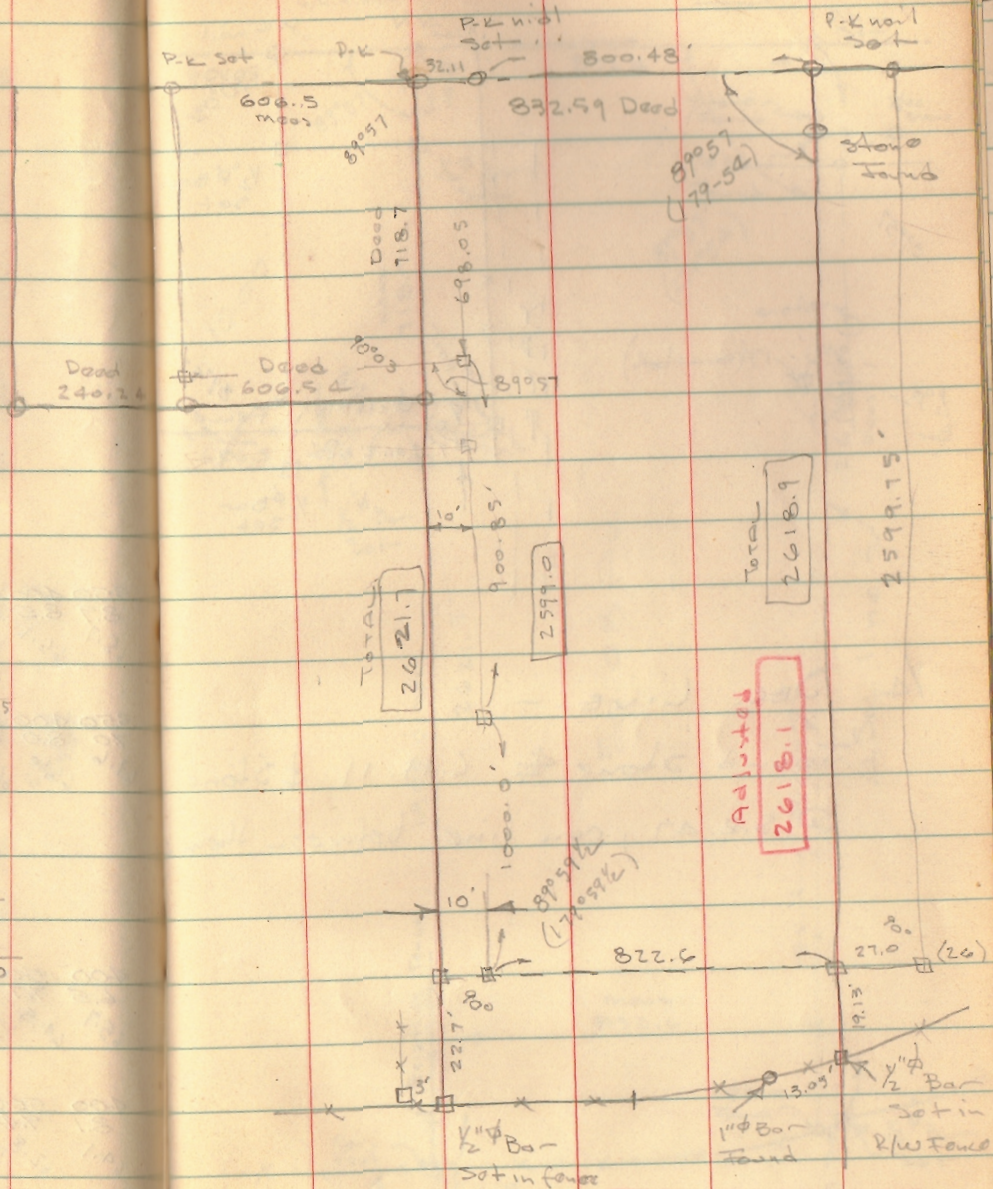
67

832.59
800.48
32.11

698.05
900.85
1000.0
2598.95
22.7
2621.65

718.7
698.05
20.65

1921.3
718.7
2640.0
1000.0
900.9
22.7
1923.6
20.6
1903.0



TOTAL  
2621.7

2599.0

Total  
2618.9

2599.75

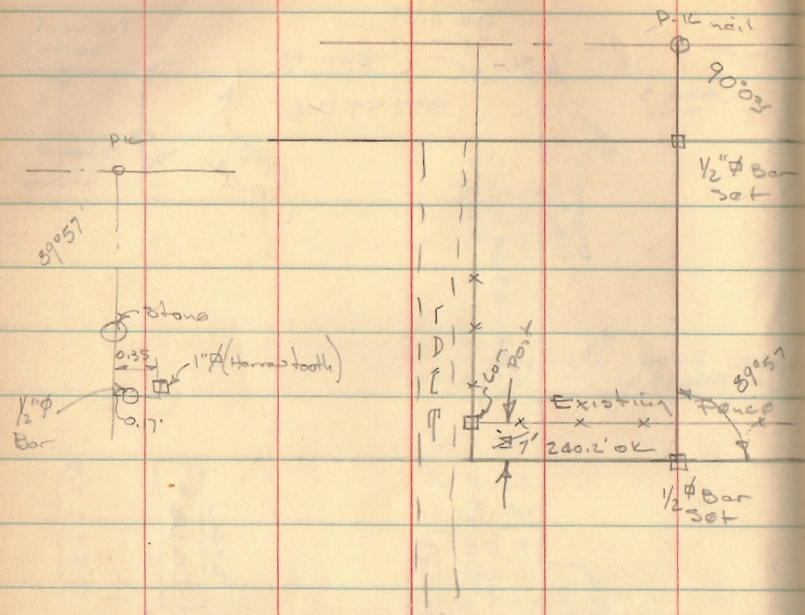
Adjusted  
2618.1

3810

INDEXED ON MAP  
3810



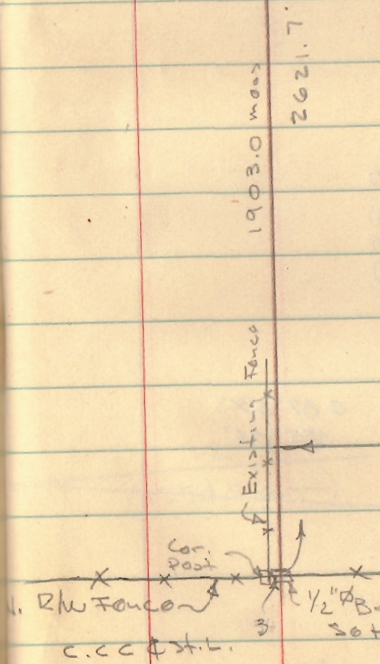
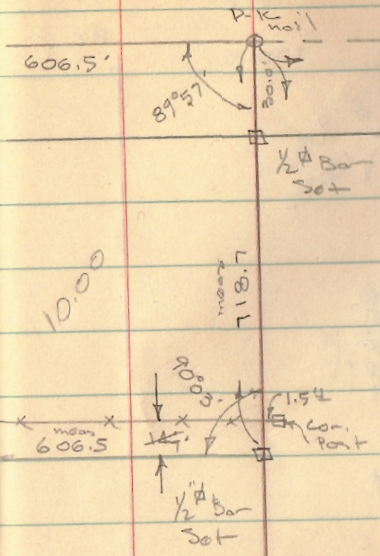
GROWTH CORP CONTD



1/4 Sec. Line -

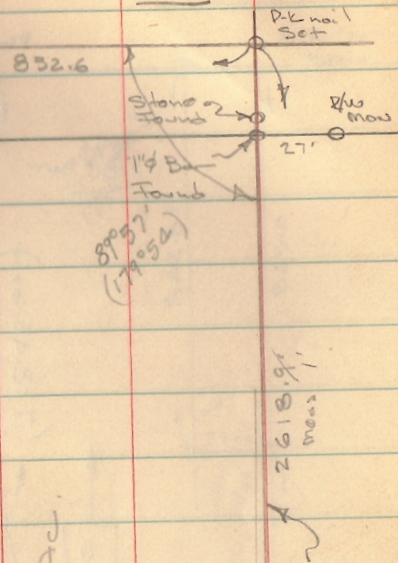
Found stone & C.H. 11 & Stone  
@ S.R. 47, ran line between them

Dodge  
Geoslin  
whitlow



April 3/1965 68

Fluis



50.00 AC.

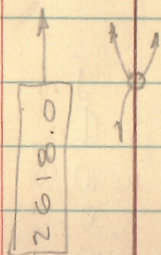
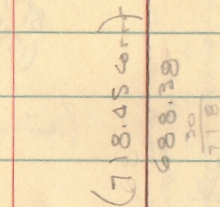
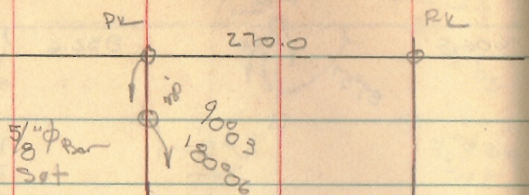
meas.  
832.6

1/4 Sec. line ~ 2618.91 meas 1

INDEXED ON MAP  
3810



6/4/66  
880



92019  
8757  
9003  
-----  
27019  
8920 1/2  
-----  
35939 1/2

(corr. 1.2)  
1868.0

087°57'  
175°54'

INDEXED ON MAP  
3810

5/8" Pipe  
set in  
fence

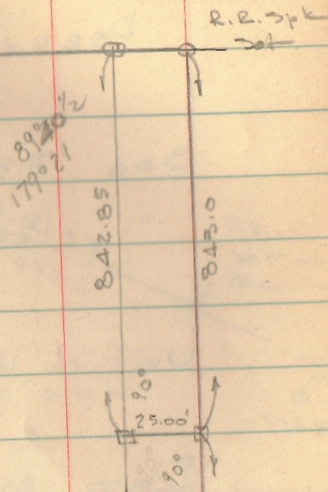
31.37

2700.0

5/7/66

68°

69



Hub @ 844.70

1766.0

092°19'  
0184°38.5'

1254.8

(1254.9 corr.)

024°24'  
048°48'

169.35  
(69.35 corr.)

66.09

1/2" Pipe

1" Pipe



GIBBS SURVEY

PERRY Township

SEE F.B. 555 / 24  
" PLAN W-10

Nail on U.S. 33, set on Curve!

REF Mon's. U.S. 33

STA.	LT	RT.	
580+00	18'	18	
590+00	18	18	Found & Used
595+00	18	18	Found & Used
600+00	18	18	

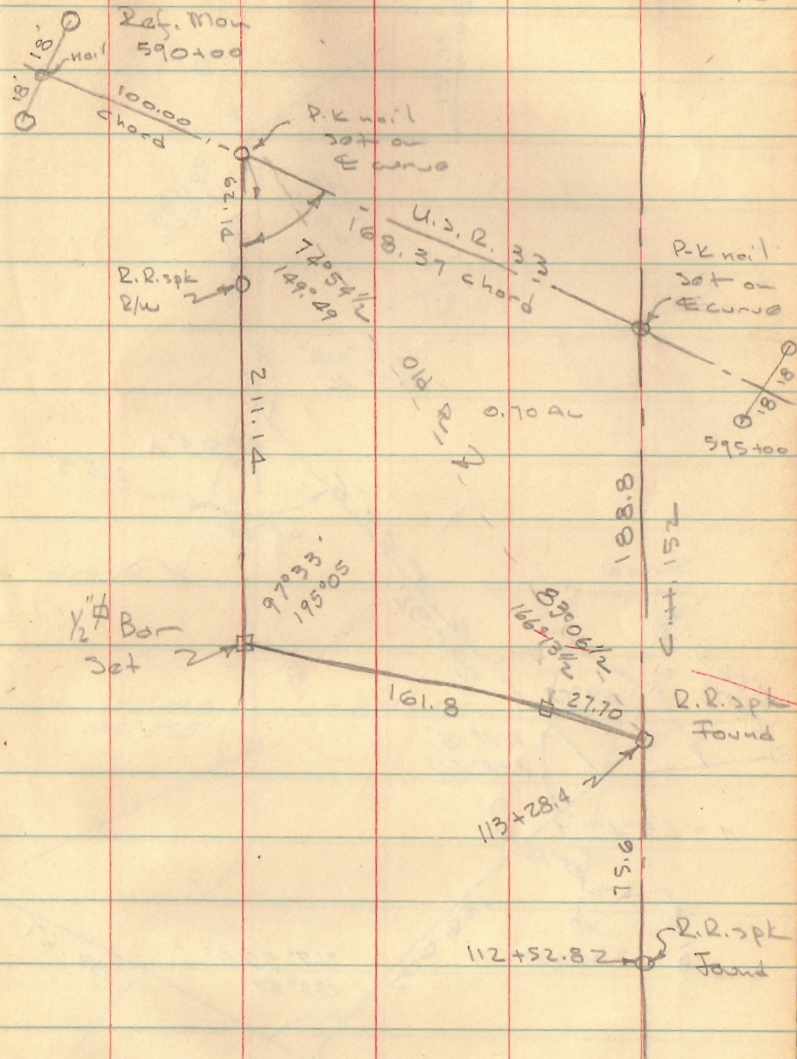
$D = 0^{\circ}44$

$\pm C.H. 152 \text{ on Plan} = 592 + 67.67$

INDEXED ON MAP  
3312

Dodson  
L. Gordon

Feb. 12, 1965  
70



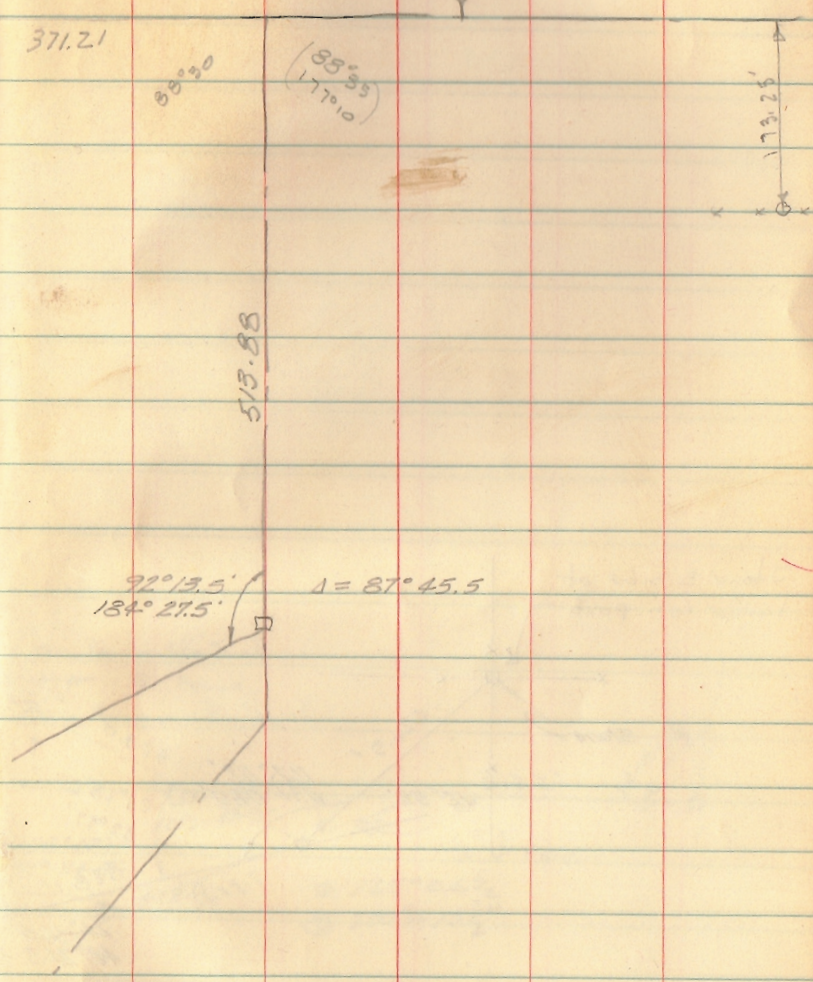
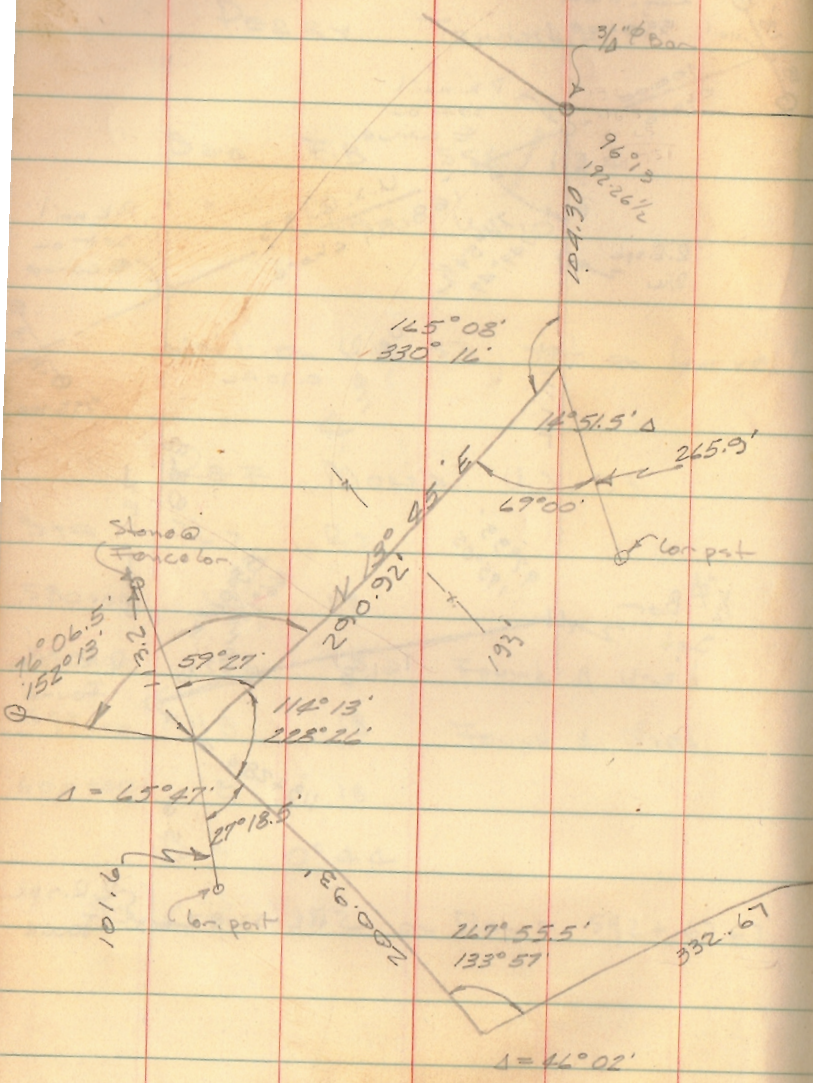
708 3 1965



FENTON - NORTHWOOD

2/20/68

71



INDEXED ON MAP  
3664

92.0 13.5  
184.2 21.5



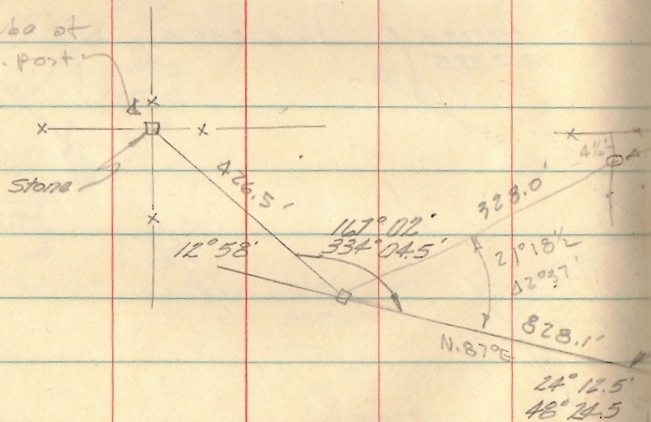
FENTON - NORTHWOOD

Cont'd

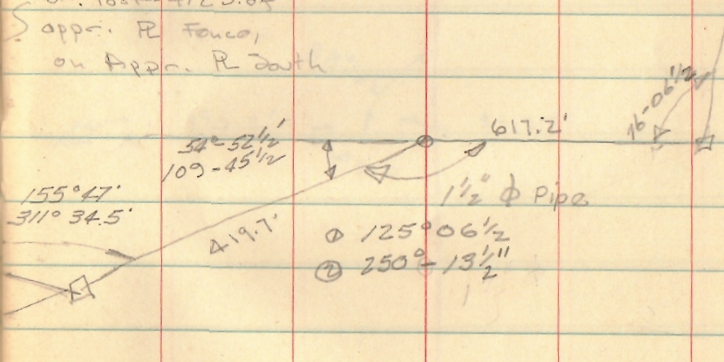
A. Dodson  
L. Goslin  
J. Whitlow

2/26/65  
40° 72

Stone E. side of  
large Con. post



Con. Post -  $4\frac{1}{2}''$  S. of  
appr. R. fence,  
on Appr. R. South



INDEXED ON MAP  
3664

INDEXED ON MAP  
3664

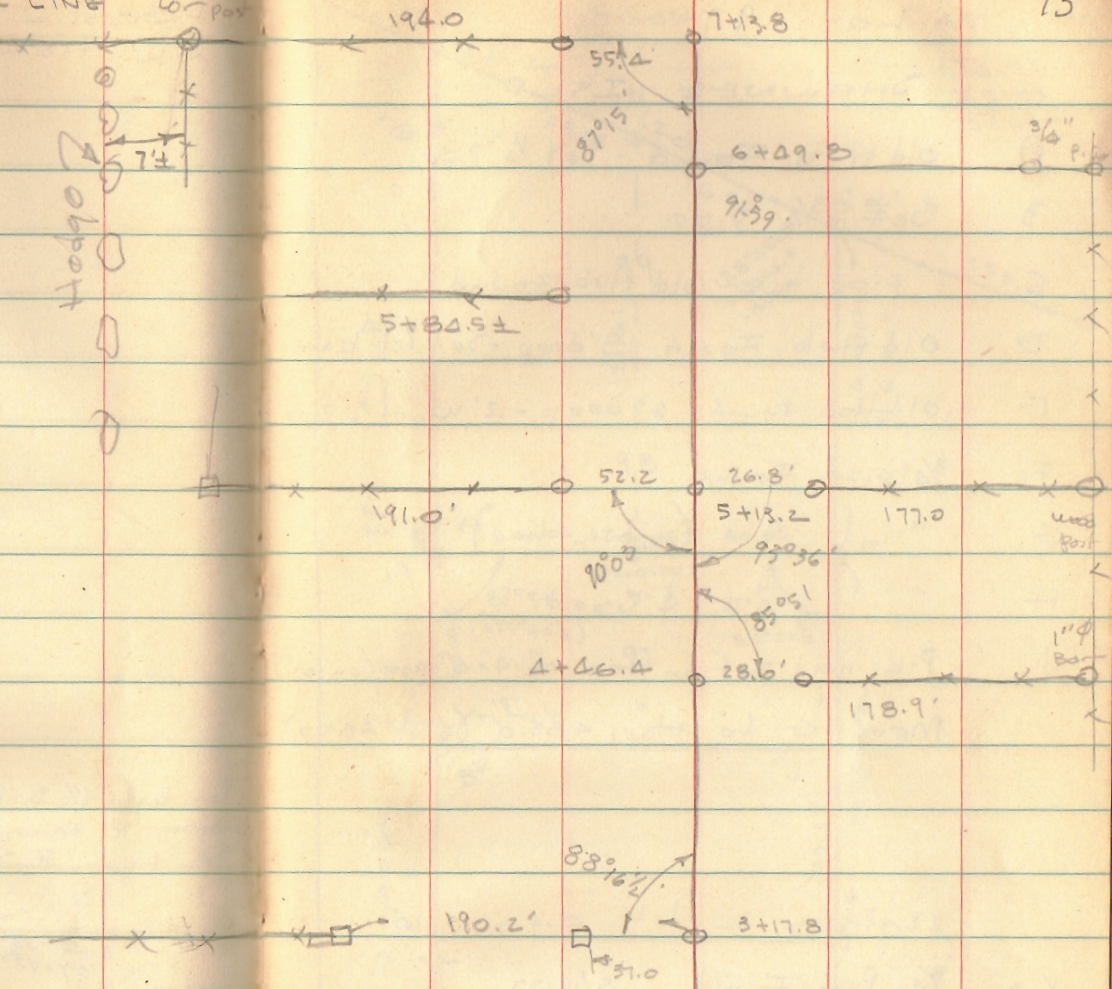


NORTHWOOD

RANDOM LINE

wood  
lot par

73



INDEXED ON MAP  
3664

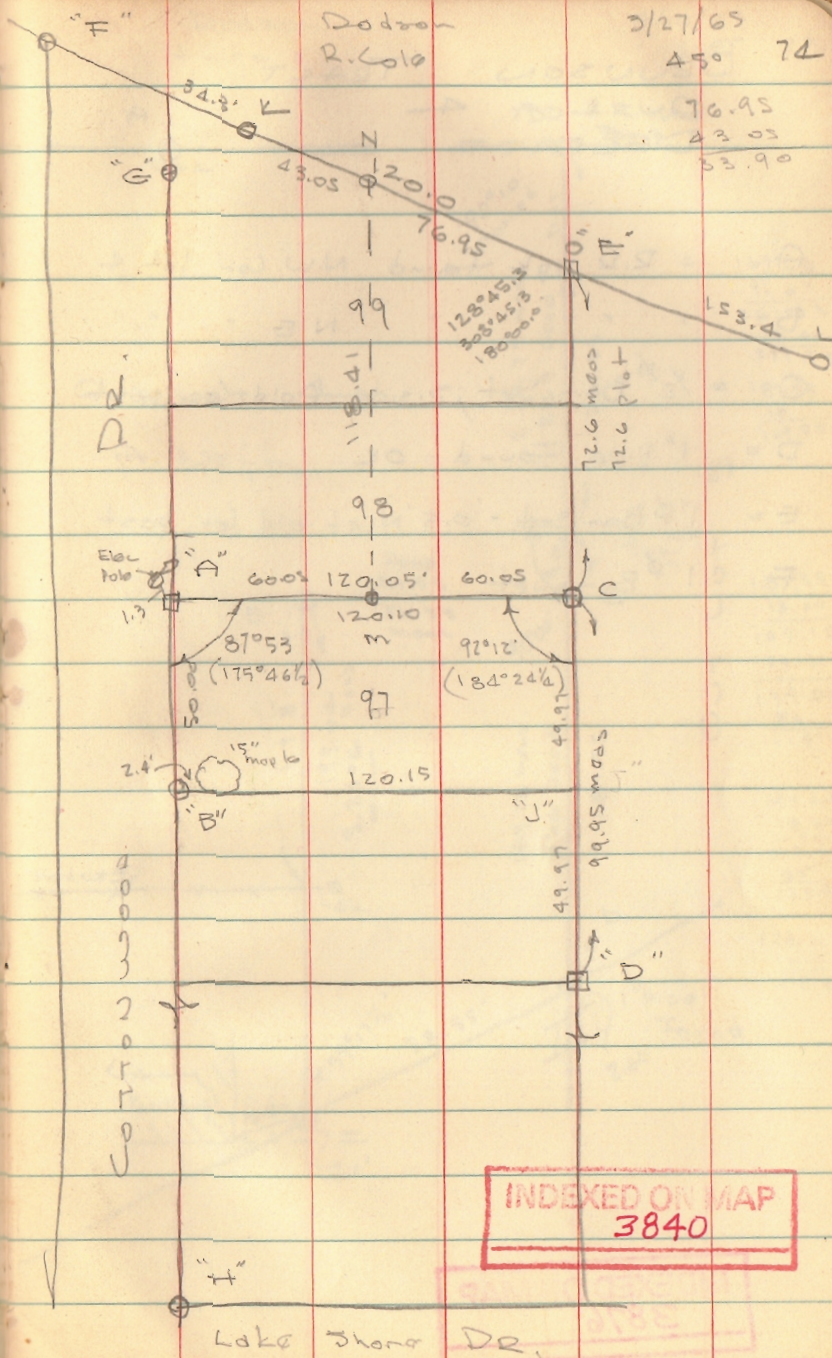


Lot 97

SHAWNEE ISL

- A old Hub Found - Set  $\frac{1}{2}$ " pipe
- B Set  $\frac{3}{4}$ " pipe
- C 1" pipe over old Hub Found
- D Old Hub Found 18" deep - Set  $\frac{1}{2}$ "  $\phi$  bar
- E old Hub found 6" deep - .2' W. of  $\frac{1}{2}$ " pipe
- F  $\frac{3}{4}$ " pipe Found
- G " " (not in line)
- H " "  $\phi$  used
- J P-K nail set in top of 4" x 4" post (on cor.)  
 Meas "G to H" 435.0 (plot 435.0)

- 22 trees on lot Aug 5, 20 60"
- K =  $\frac{3}{4}$ " Pipe Found 5/19/77
- L = " " " " "
- M =  $\frac{5}{8}$ "  $\phi$  Set " "
- E  $\frac{1}{2}$ " Pipe Found 5/19/77
- N  $\frac{5}{8}$ "  $\phi$  Set 76.95 from E.
- Line C-D follows 0.2'  $\pm$  north of "E" - (used  $\frac{1}{2}$ " pipe E)



Dodson  
R. Cole

3/27/65  
450 74  
76.95  
43.05  
53.90

INDEXED ON MAP  
3840

Lake Shore Dr.



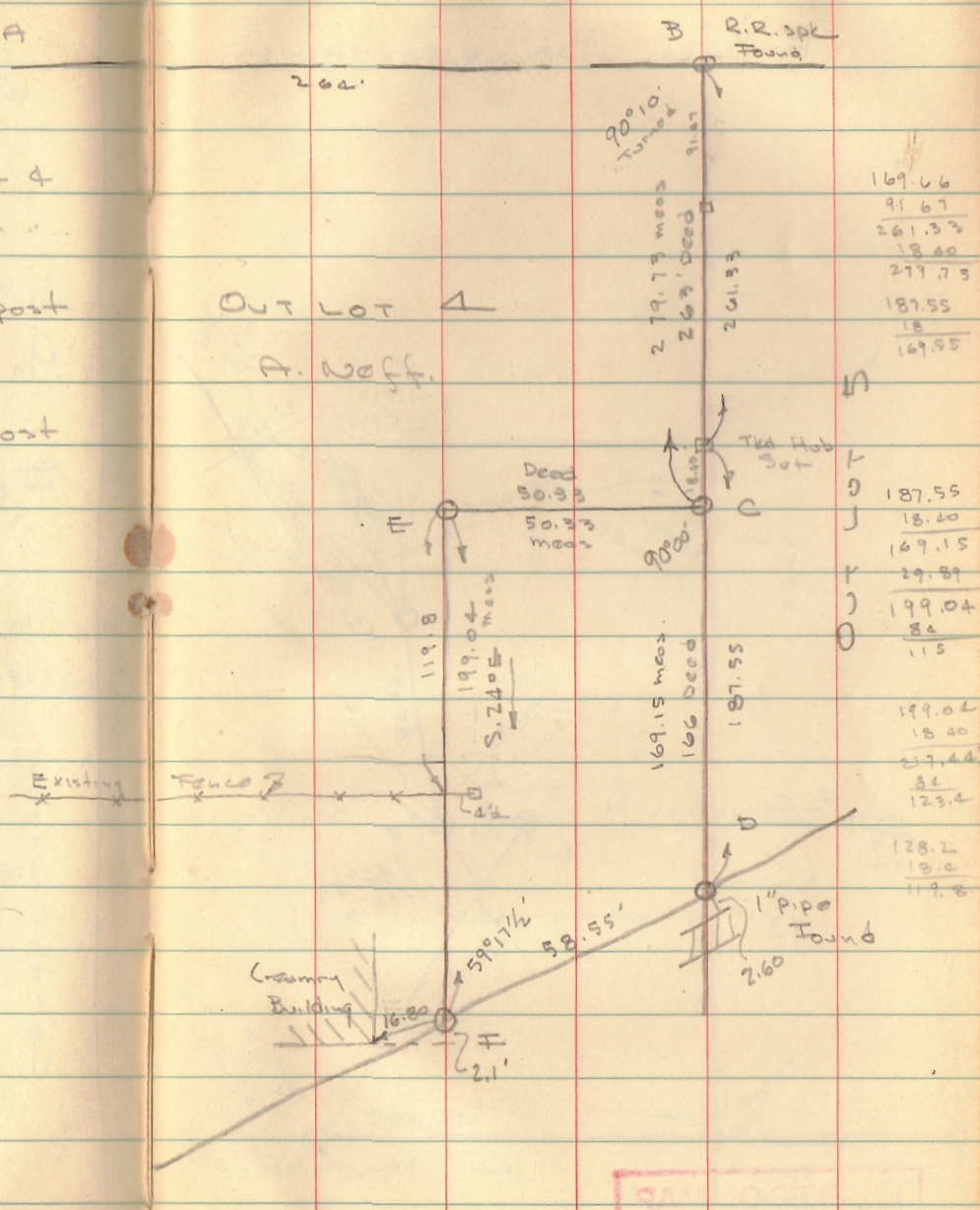
# BRUNSON TRACT

OUT LOT 4  
DEGRATT

- A = R.R. spike Found N.W. Cor lot 4
- B = " " " NE " "
- C = 1/2" Bar Set, S. side of old Cor. post
- D = 1" pipe Found - OK
- E = 1" Bar Set - 0.5' N. of old Cor. post
- F = 1" Bar Set

Dobson  
J. C. G. R.

4/10/65  
60° 75



169.66
91.67
261.33
18.00
277.73
187.55
18
169.55
119.8
199.04
5.2405
50.33
50.33
169.15
166
187.55
199.04
18.00
217.44
84
123.4
128.2
18.2
119.8

INDEXED ON MAP  
3876

INDEXED ON MAP  
3876

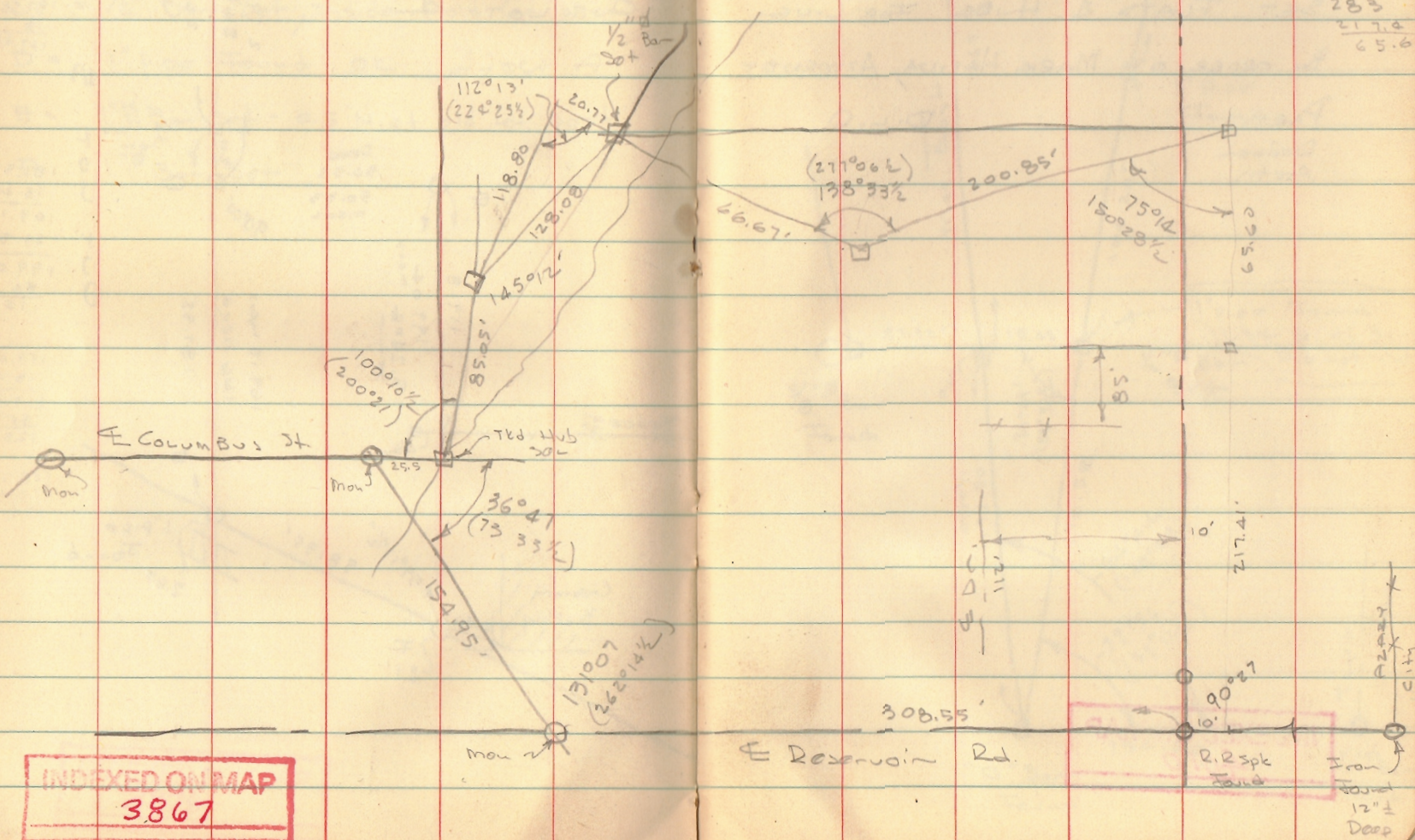


AZART  
E. COL. BELLE FONTAINE

Dodson  
J. Lira

5/1/65

76





VAN HORN SURVEY  
WOLF ISLAND

ALL PINS FOUND 3/28/70  
SET FLATS & HUBS FOR LING.  
BY ORDER OF MARY HALDA, ATTORNEY  
PARTY D.L.O.  
DODSON  
ARTIS

INDEXED ON MAP  
4010

