

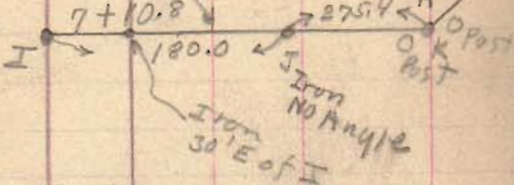
Fair Grounds (Survey)
Sec 34-4-14 (Lake Trail)

Carter
A.M.

14+95.3 Mon (stone)

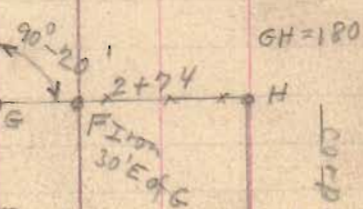
12+38.8 Lead & Brass
old Corporation line

Lead Plug
& Brass



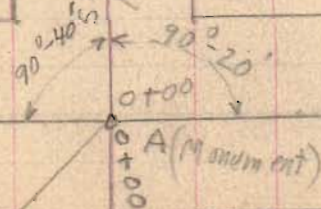
AG = 274'
BH = 274'
AB = 180'
GH = 180'

Route 68
S.H. 189 (S. Main St)

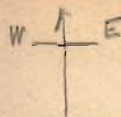


Corporation Line
2+66.5

Road 11



AB = 180.0'



July - 16 - 1937

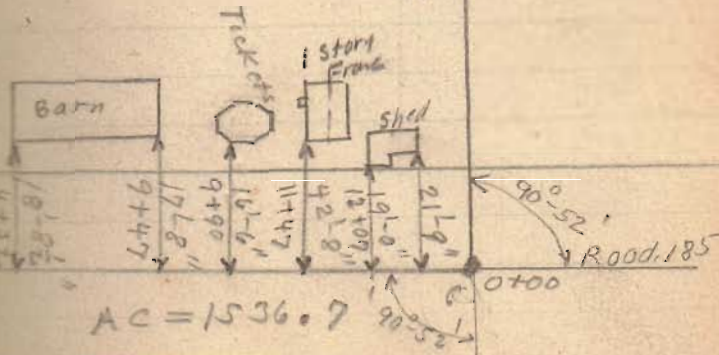
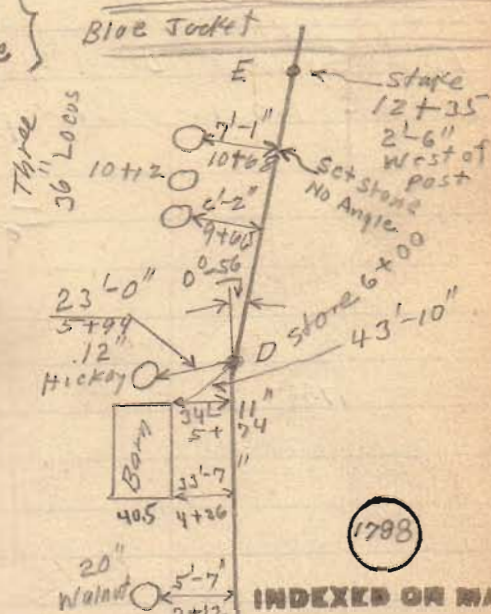
F. Wright
G. Nilgus
G. Pusey

46

July - 17 - 1937

(Same Party)

See Page 47
See Page 49
For This Line



AC = 1536.7

(see Plan F-45) (over)

Fair Grounds (Surrey)

See Book C Page 288
 see City Record C Page 63
 Fair Ground Deed 152 Page 405
 Frank Koons surrey Vol. 134 Pg

1788

INDEXED ON MAP

76x20 Chans
 5029.20 Feet
 S. Line
 Original see,

North
 710.8'

I — N-89-26E — K
 455.4

151
 N27-46E
 216.4
 610.40'

- LN = N 20-31E 132.1
- NO = N 55-59E 91.0
- OP = N 39-39E 149.6
- PQ = N 63-0 E 85.7
- QR = N 86-54E 668.0
- RD = S 0-36 E 653.0
- DC = S 1-32 E 600.0
- CA = S 89-20 W 1536.7

7-16-17-1937 47

W — A — E
 35° 28'
 149.6
 85.7
 P
 (See Page 49)
 668.0
 R
 180.0

Stone
 No Angle
 7° 15'

DE = 635.00'
 DR = 657.00'

D (stone)

CD = 600.00'

Q 30" Oak
 43.70
 12" Hicky
 N. 36W
 97.20
 N 72W
 19.60
 58.4
 S. 25W
 17.70
 Iron & Stone
 Book 511
 Page 23

Cross
 on
 Rock

(over)

Fair Grounds Survey

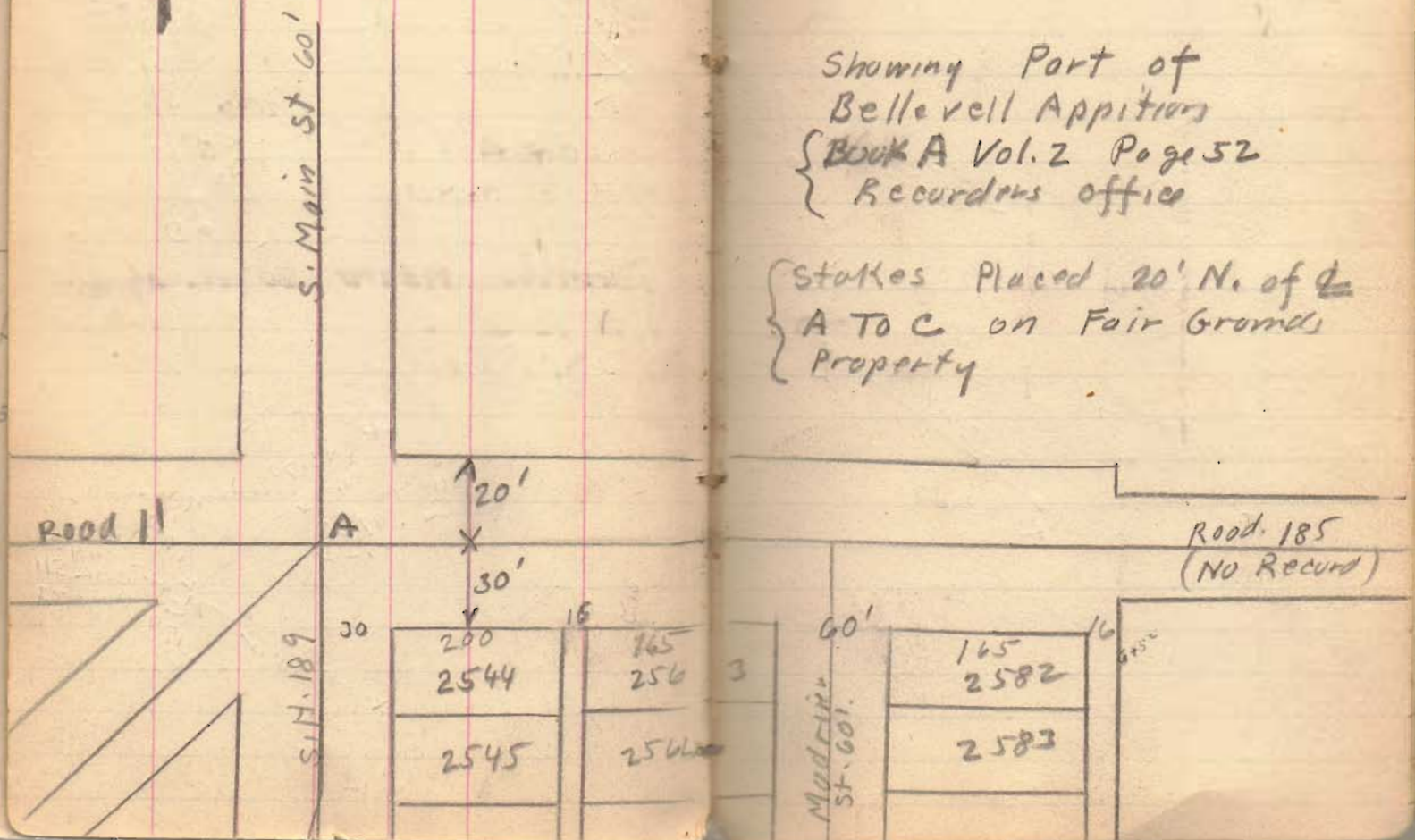


1788

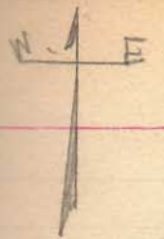
INDEXED ON MAP

Showing Part of
Belleveil Appitions
{ Book A Vol. 2 Page 52
Recorders office

{ stakes Placed 20' N. of ~~the~~
A TO C on Fair Grounds
Property

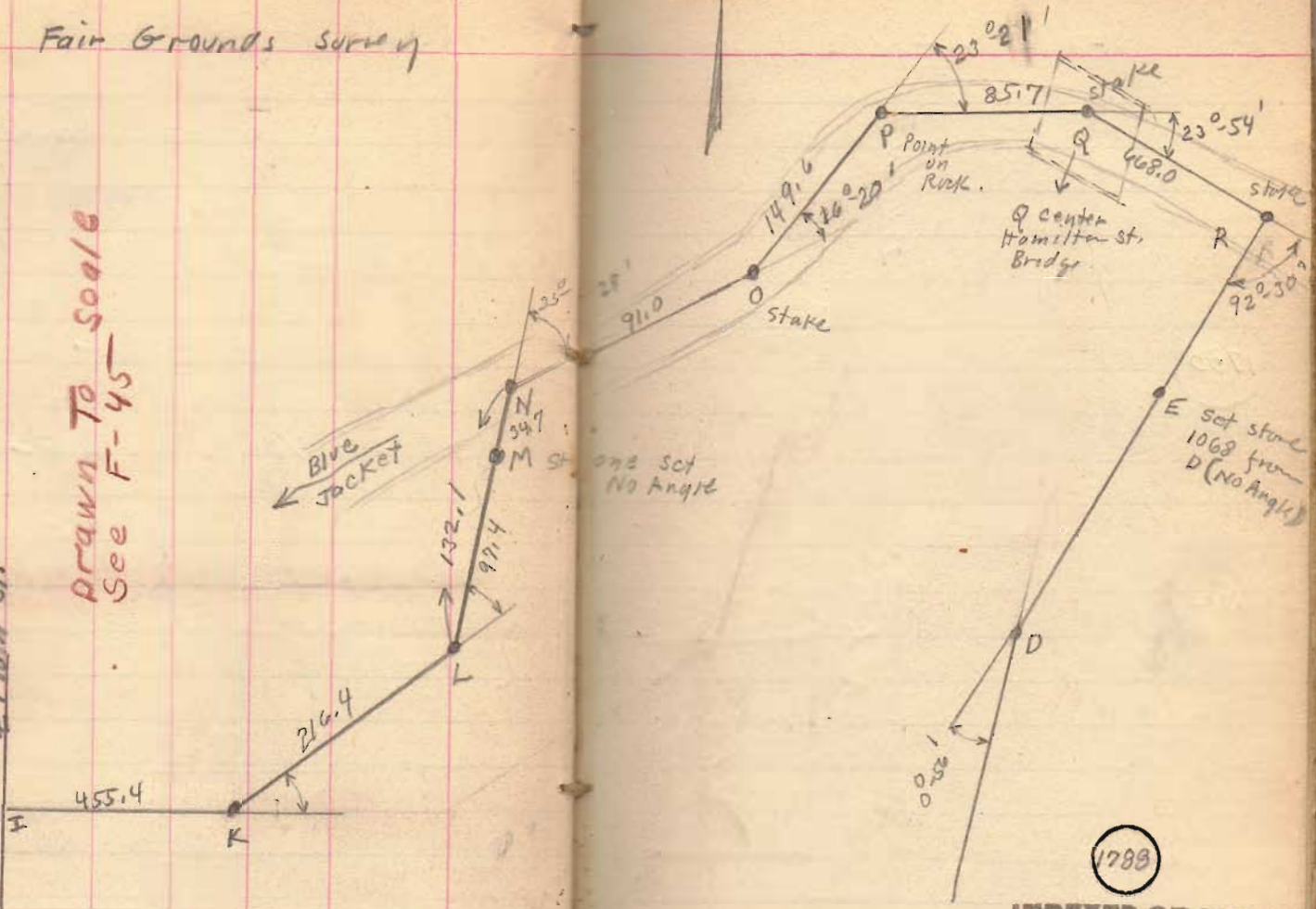


Fair Grounds survey



4 Main St.

Drawn To Scale
See F-45



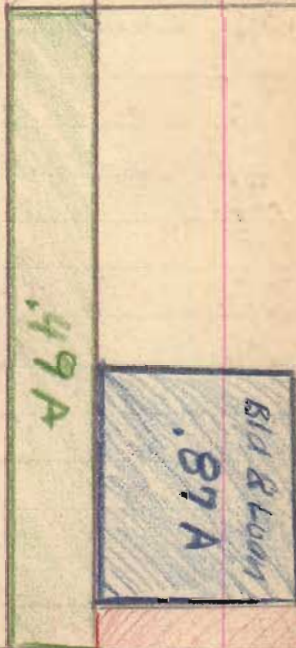
one set
No Angle

1789

INDEXED ON MAP

Fair Grounds Survey

E Main St



1788

INDEXED ON MAP

INDEXED ON MAP

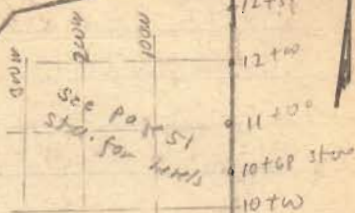
corporation

35.87 Grand Total
 - .87 Bld & Loan
 35.00 Total Fair Grounds with sts
 - 1.18 Lake & Main Sts.
 33.82

30.94 Lake Tap
 2.88 Bellefontaine Corp
 33.82 Fair Grounds Without
 sts.

.69 A

20'

E Road
185

Jan. 13 1938

cold

F. Wright

G. Milgus

Bob Conard

51

Fair Grounds N.E. Cor

+s. H. 1. -s. E. 1. 1.

B.M.

90.00

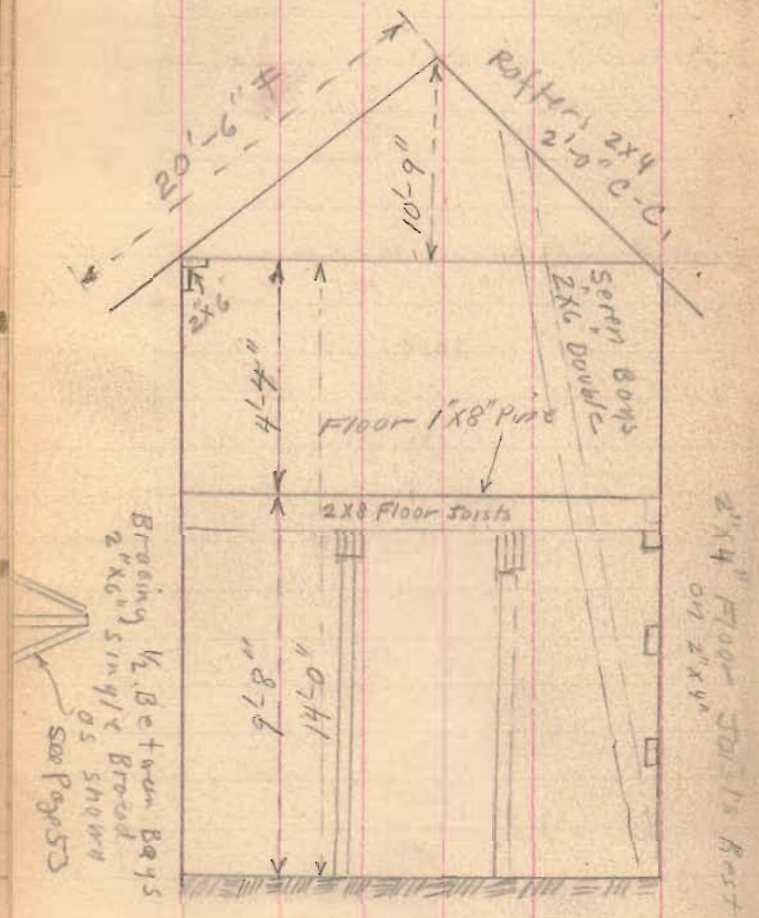
B.M. Nails Root S. side 10" sugar

Near Drive see Book 2 Page 42

Jan. 26, 1938
 Cold - Yes Sir
 F. Wright
 C. Inst. Insp.
 W. R. Wright

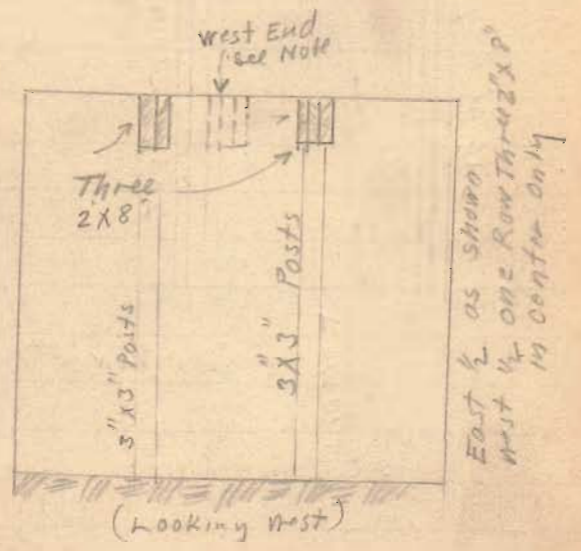
Fair Grounds

Switzer Barn 32' X 109'
 N. Main St.

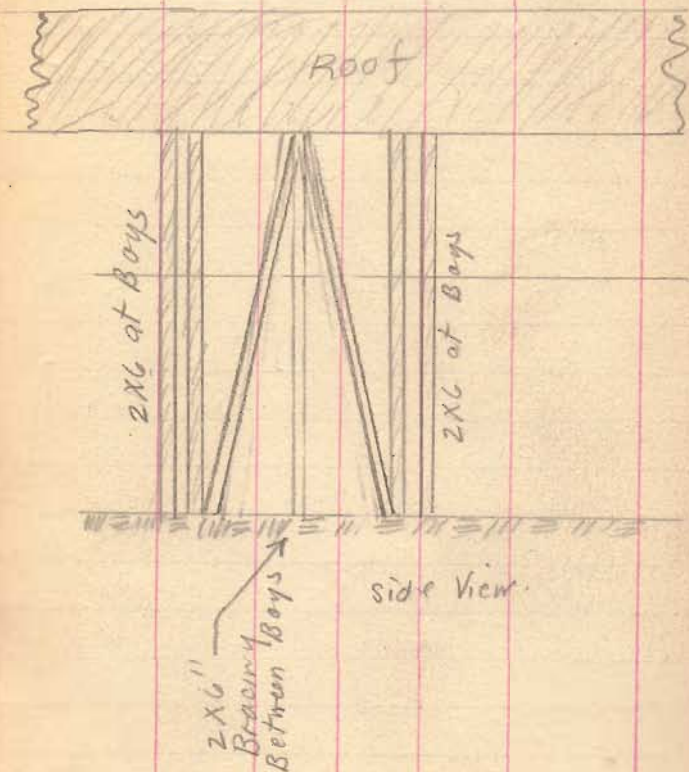


Rafters 2"X4" - 2'-0" spacing
 Floor Joists 2"X8" - 2'-0" spacing
 Sheeting under Roof.
 1"X4" Tongue & Groove
 Approx 1" opening between Boards
 Tar Paper Roof, 4551 Sq. Feet.

Stalls 5'-0" wide



Fair Grounds
Switzer Barn



Sides (South & North)
1x8" Sheeting - Vertical

Ends (East) Siding Trough &
Gourd. Horizontal

8/16/38

C.A. Inskip
G. Wilgus
M. Jones
R. J. Kinard.

54

Far Ground

Inside Race Track

See sketch Book 2 Page 41

Set stakes on Φ at each
100' station and 100' E & W
and 150' E and W.