

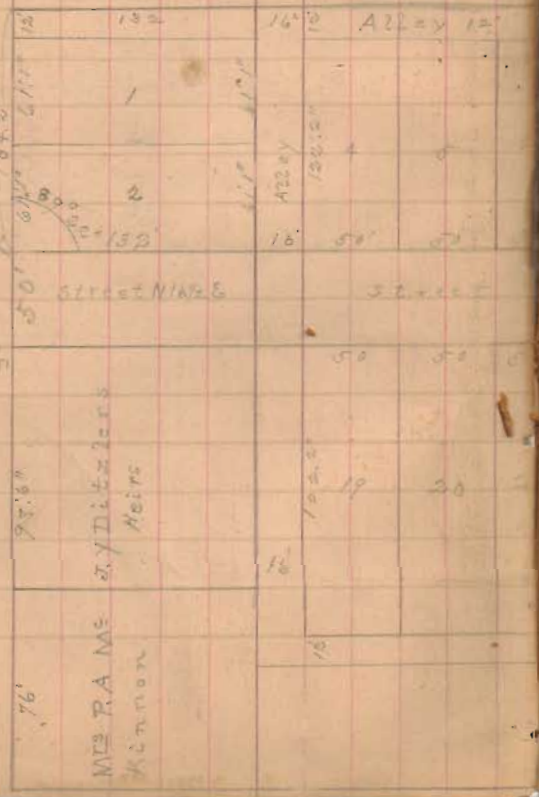
Cent path track

First Lot 10 88.

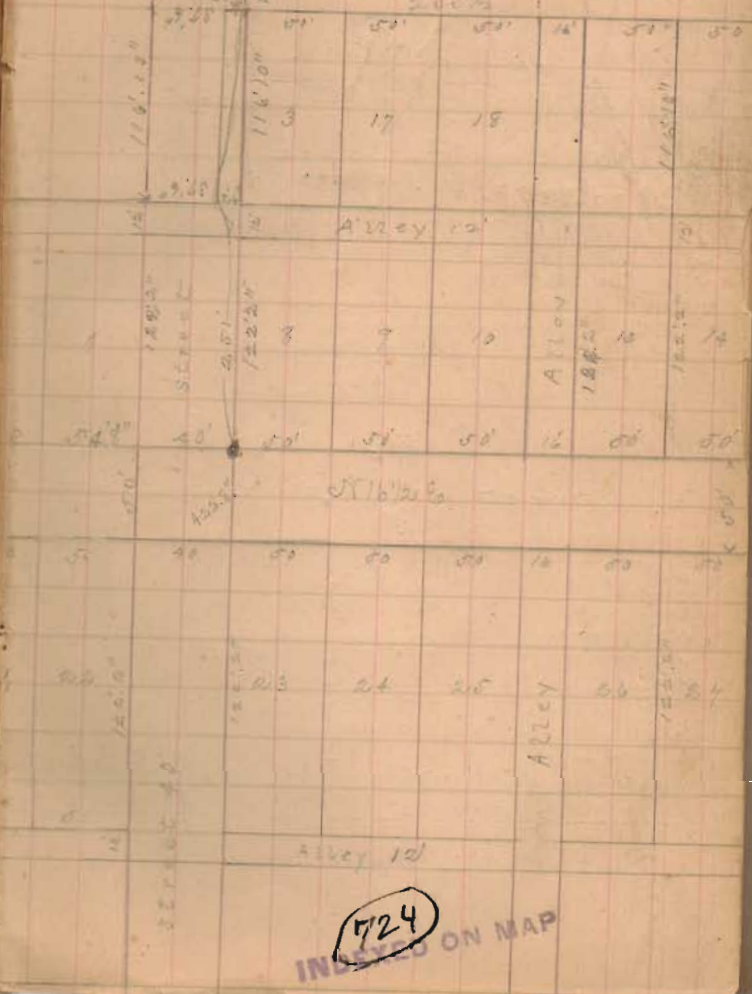
Hunterville

Chas Herron

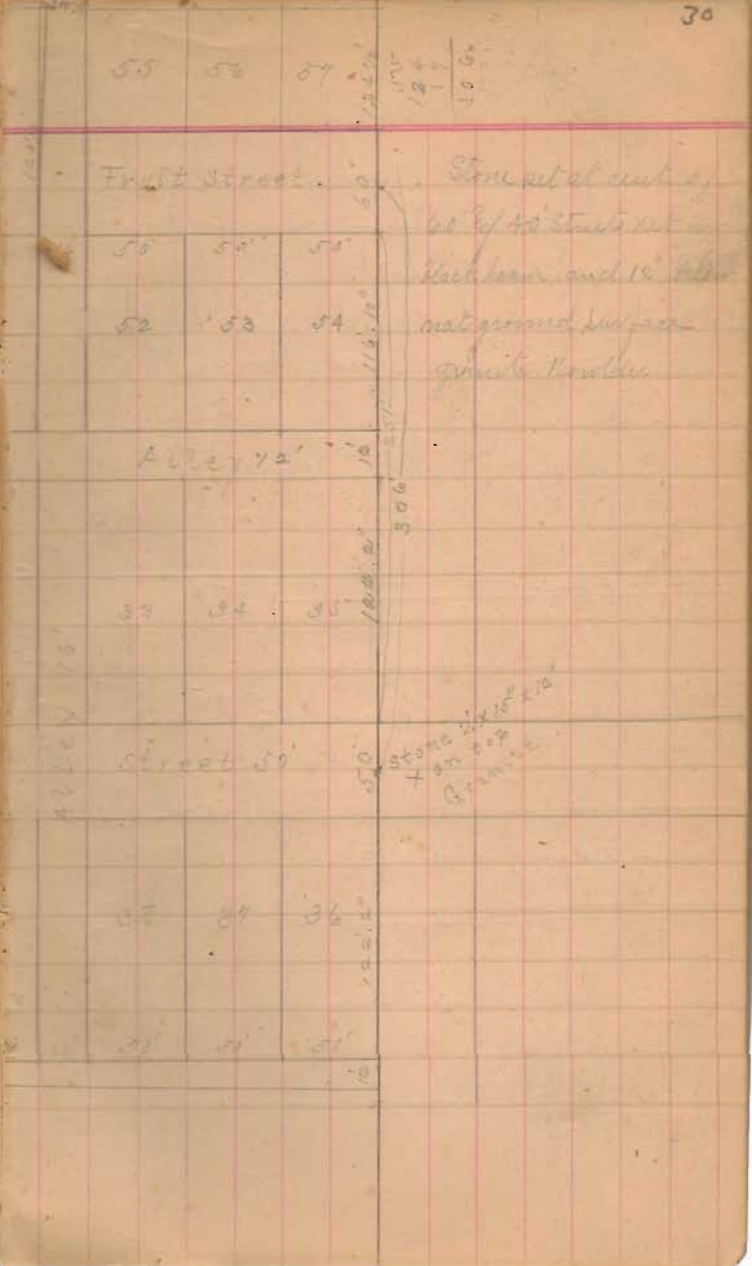
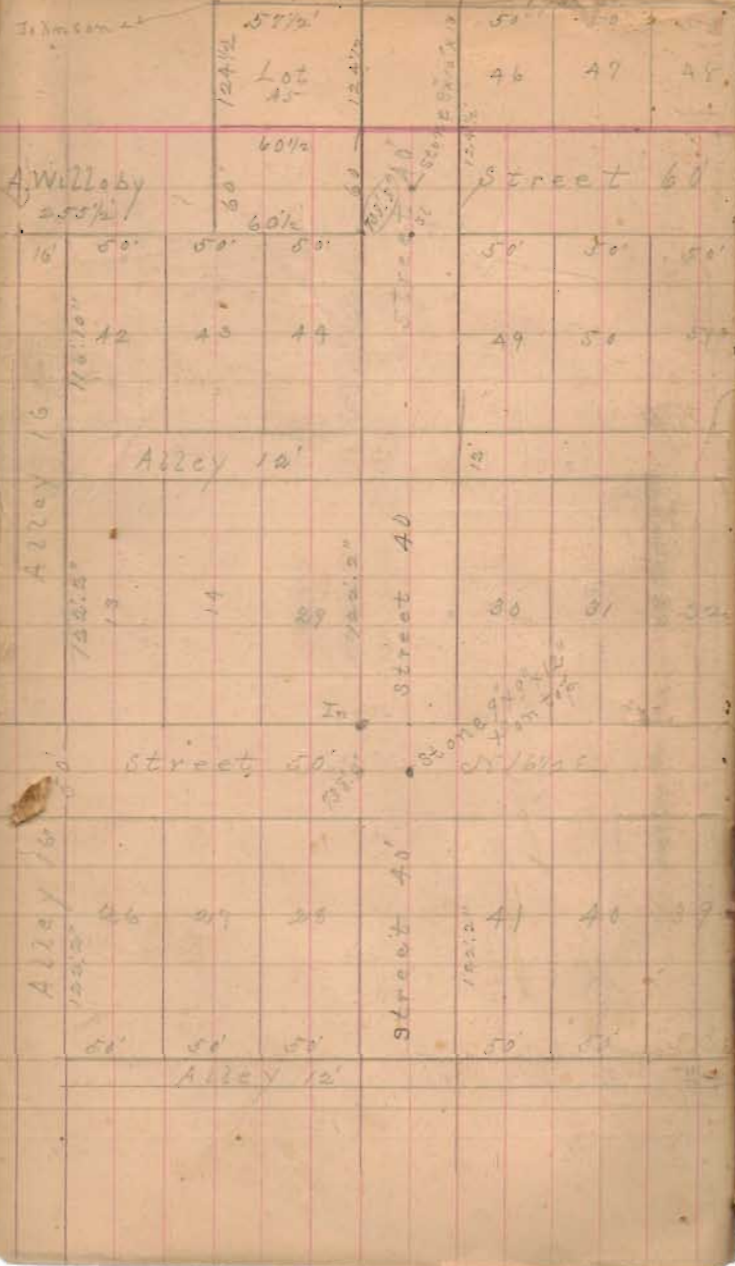
Planted in front of x 9' x 12' 1/2' ...
From cent R.R. front 50' street 6' 1/2' ft. Stone stands in front of street 6' 1/2' ft.
Nashville St 6' 1/2' ft. 60' wide



205 - 208 1/2 + 46
Andy Willoby



724 INDEXED ON MAP



cont 134 W Ry

Alley

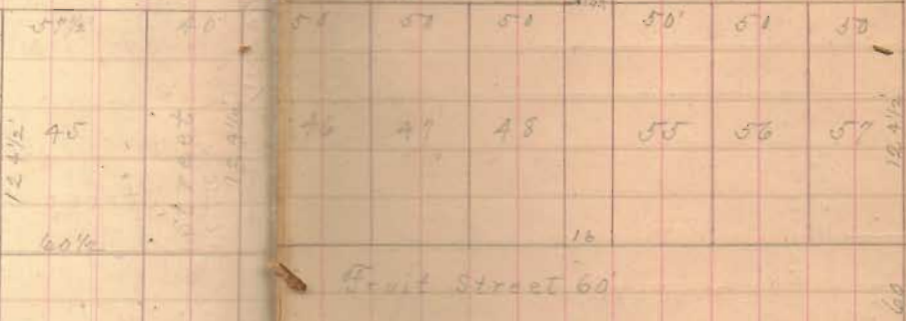
A Wilbey 1.16a

Fruit Street

B.

Johnson 1a

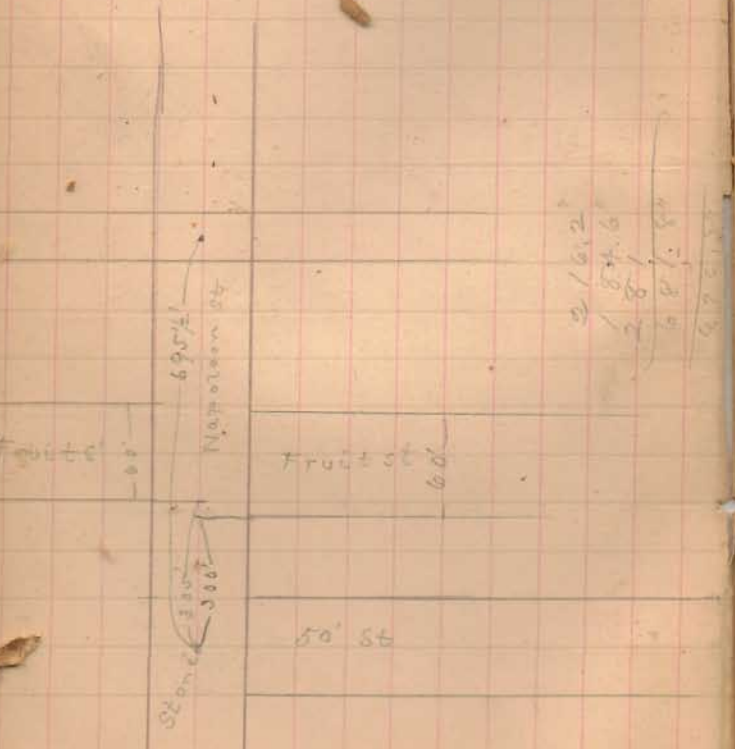
192.5'



Street 20

Measure 17th Street

Measure from point on main track C. & N. Ry.
 to East side of 17th Street on Nap St 695 1/2'
 From curv. R. R. to east side Fruit St. North
 = 695 1/2' - 300 = 395 1/2' =
 Same South = 695 1/2' - 300 = 395 1/2'



216.2
 184.6
 281
 687.8
 695.1

Lat 6.00. Oct 13-83

Linn Ward Linn

Start at stone ang of road cut = to
Eyer ²/₃ / ²/₃ Culp.

with road S 86 1/2 E 10.00 ch to stone
in cut road = Ward & King

16 links W of

Linn B. Start at stone in road = to
Ward & King thence with old fence
S 88 E. at 10.00 fall 33 links W of
fence, dip too small. W. 1/2 on 10 ch
at 10.22 on fence pass on side of block
oral tree 3 1/2 di and on E side 18th oral
stump 3 di. Correct corner for Linn N 9 E
13.85 ch outlet chan at SW = of lake, x end fence
and 1 chain west of surface of water in lake
and 1 chain east of line as cut by King. You see
crest line.

ditch at outlet about 6' deep.

Course of road stone at ang road = fence
and culp to = King & Orchel S 86 1/4 E

Linn P. Start at quar line < SW = J. Miller
E / S 8 < E. Patterson

S 86 1/2 E 9th south
at 10.00 pass old cor stone or or = to
Linn Ward & King

at 30 3/4 chain line as cut to by King
and line cut straight from here to S. end lake

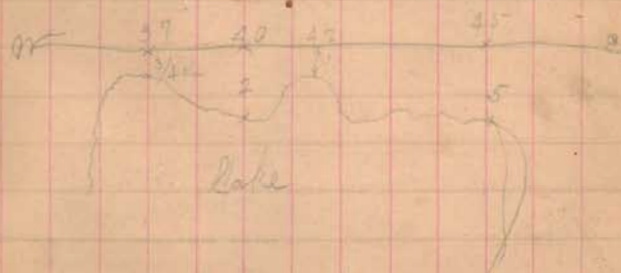
at 37.00 ch old 7 1/2 corner N 3 = Ward & King
3/4 chain north of margin water in lake

38 1/4 ch chain from cut S 1/2 ch N of lake

40.00 yr line = 20 ch N of lake

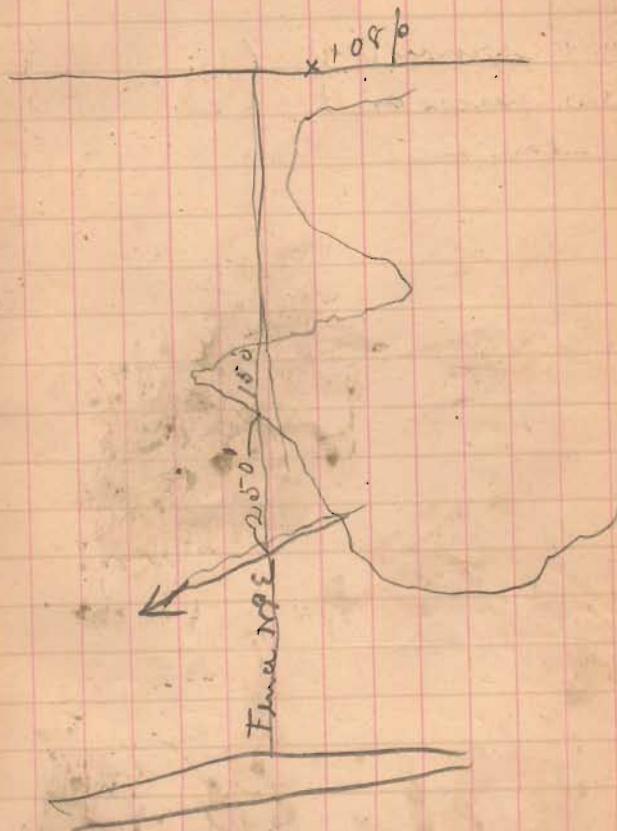
42.00 lake 1 ch south

45.00 " 4 " " and N E = lake



Oct 22 - 88

Ward and King
Course of RR cul from N
Junc S side lake N 1/4 E
Course from N end of Ward and
King Junc at S side lake N 13/4 E
to Stake at NE Ward at 108 p.

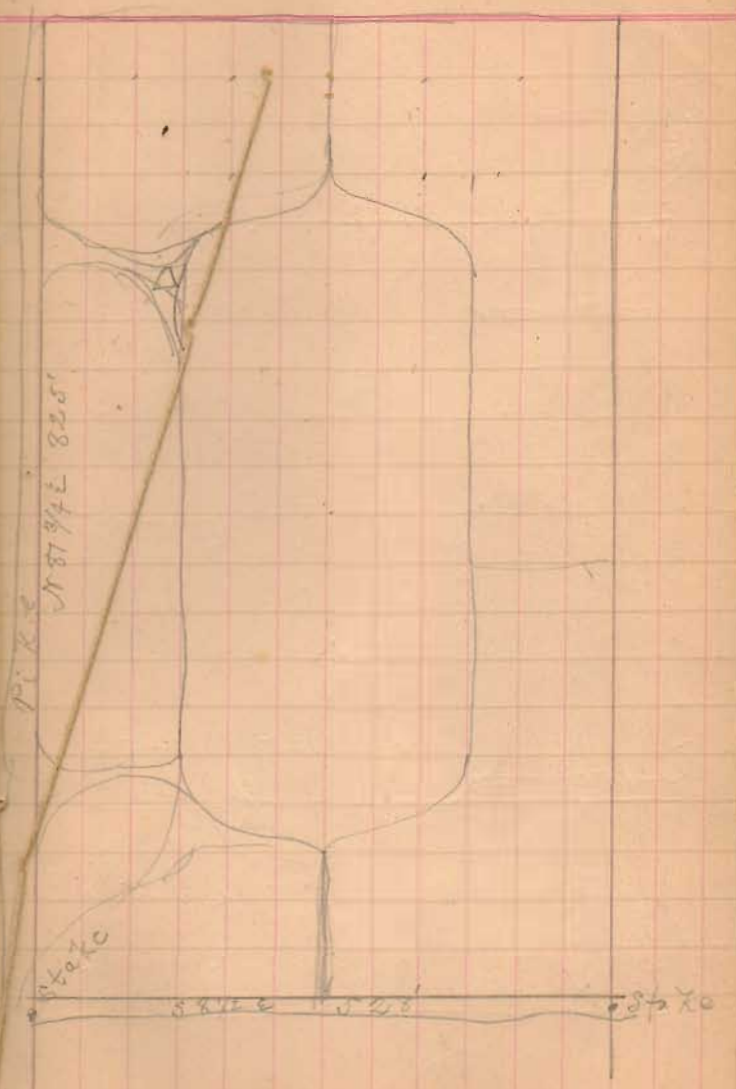


April 28 - 89

course of pike N 87 3/4 E 507.

" " M. Road N 87 1/2 W 327.

A. R. Legambert & co. owners
S. S. Johnson



16.12.20

Polino field grass 3 x 10
lots E 18, 20 T 22.
N/S 12, 16 - 18, 20-22

E
6 margin on E

