

TABLE for reducing FURCHES to FEET.

Feet	Feet	Feet	Feet	Feet	Feet	Feet	Feet
1	16.5	21	34.5	41	67.5	61	100.5
2	33.0	22	36.0	42	69.0	62	102.0
3	49.5	23	37.5	43	70.5	63	103.5
4	66.0	24	39.0	44	72.0	64	105.0
5	82.5	25	40.5	45	73.5	65	106.5
6	99.0	26	42.0	46	75.0	66	108.0
7	115.5	27	43.5	47	76.5	67	109.5
8	132.0	28	45.0	48	78.0	68	111.0
9	148.5	29	46.5	49	79.5	69	112.5
10	165.0	30	48.0	50	81.0	70	114.0
11	181.5	31	49.5	51	82.5	71	115.5
12	198.0	32	51.0	52	84.0	72	117.0
13	214.5	33	52.5	53	85.5	73	118.5
14	231.0	34	54.0	54	87.0	74	120.0
15	247.5	35	55.5	55	88.5	75	121.5
16	264.0	36	57.0	56	90.0	76	123.0
17	280.5	37	58.5	57	91.5	77	124.5
18	297.0	38	60.0	58	93.0	78	126.0
19	313.5	39	61.5	59	94.5	79	127.5
20	330.0	40	63.0	60	96.0	80	129.0

Entered according to Act of Congress, in the year 1866, by James W. Queen & Co.,
in the Clerk's Office of the District Court of the United States, for the Eastern
District of Pennsylvania.

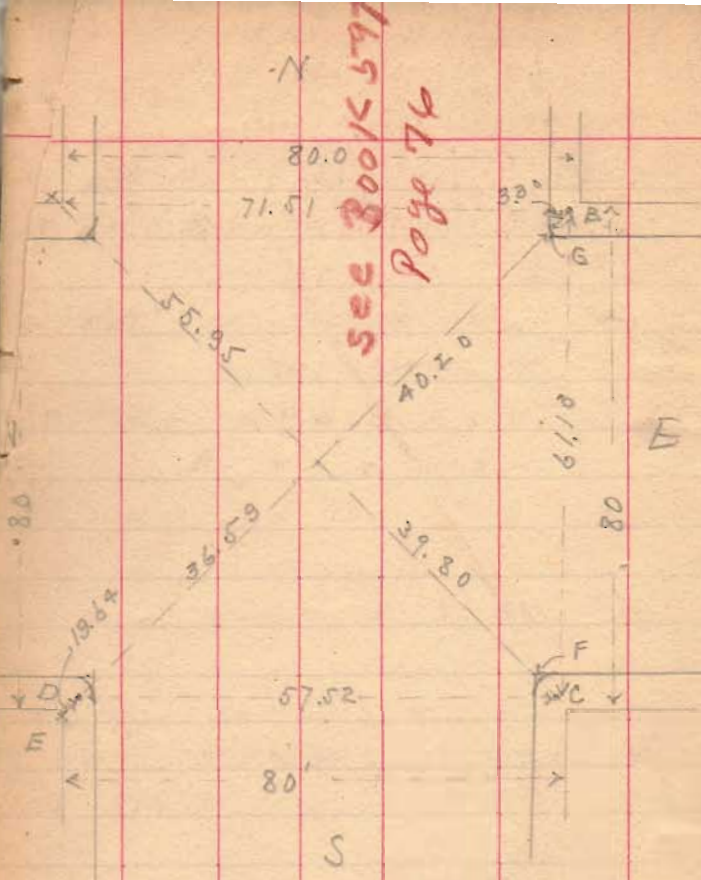
TABLE of Decimal Parts of a FOOT for each Inch and Sixteenth of an Inch.

In	0	1	2	3	4	5	6	7	8	9	10	11
0	0000	083	167	250	333	417	500	583	667	750	833	917
1	005	089	172	256	339	422	505	589	672	755	839	922
2	010	094	177	260	344	427	510	594	677	760	844	927
3	016	099	182	266	349	432	516	599	682	766	849	932
4	021	104	187	271	354	437	521	604	687	771	854	937
5	026	109	193	276	359	443	526	609	693	776	859	943
6	031	115	198	281	365	448	531	615	698	781	865	948
7	036	120	203	286	370	453	536	620	703	786	870	953
8	042	125	208	292	375	458	542	625	708	792	875	958
9	047	130	214	297	380	464	547	630	714	797	880	964
10	052	135	219	302	385	469	552	635	719	802	885	969
11	057	141	224	307	391	474	557	641	724	807	891	974
12	062	146	229	312	396	479	562	646	729	812	896	979
13	068	151	234	318	401	484	568	651	734	818	901	984
14	073	156	240	323	406	490	573	656	740	823	906	989
15	078	161	245	328	411	495	578	661	745	828	911	995

Entered according to Act of Congress, in the year 1866, by James W. Queen & Co.,
in the Clerk's Office of the District Court of the United States, for the Eastern
District of Pennsylvania.

- Dr. Young. Lot. 177.
 ✓ Elam Buckwalter 40a.
 ✓ Hamilton Bros. Pt Lot 111
 ✓ A. J. Miller and Co
 ✓ A. J. Miller Lots in Hubbard & Snyders
 ✓ Dr. Griffin Eastern Av.
 ✓ John Maxwell E. Col. Av.
 ✓ J. F. Diener E. Auburn.
 ✓ Elizabeth Wood W. Col. Av. and Everett
 W. J. Orr. E. Col. Av. 35-4-14
 Wes. Barton
 R. B. Wood N. Detroit
 ✓ Alfred Butler Lot 106
 ✓ Geo Hartley N. Main 2873 3/4

No
Detail
Information



Columbus and Main

Record "A" p 34

Dated June 18, 1902

763

INDEXED ON MAP

= Columbus ^{and} Main =

Wit! - NW. - "A", + cut in top stone
watertable S. E. < Watson bldg. - 55.95'

N.E. - "B" round head, brass screw in pavement
43.50 from cent St.

"G" File mark, face inlet curb,
40.20 from cent St.

S.E. = "C" same as "B", screw, 43.73 fr. @ St
F same as G, file mark, 37.80 "

S.W. "D" same as "B" 36.59 "

"E" same as "A", watertable, Peoples
Nat. Bank - - - 56.23 "

Diag line - A F C ^{and} B, G, D, E
Cross at X Sts.

= Columbus ^{and} Mad. R =

Bap. Ch. 64' 8 1/2" } Stone 1884
Foss. stable 49' 8" }

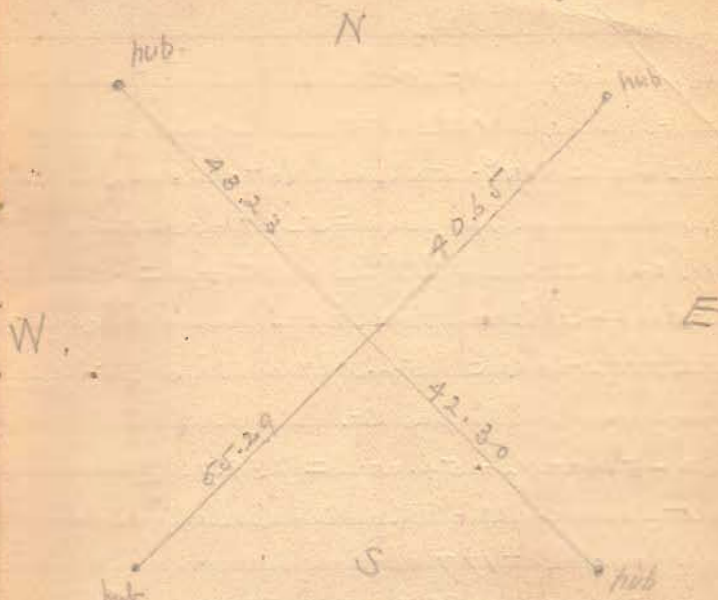
(Dist. Main to Mad. R = 526.5
" measured 525.57)

Survey for W. Little Lot 177
for Dr. Young. 3
Main and Sandusky

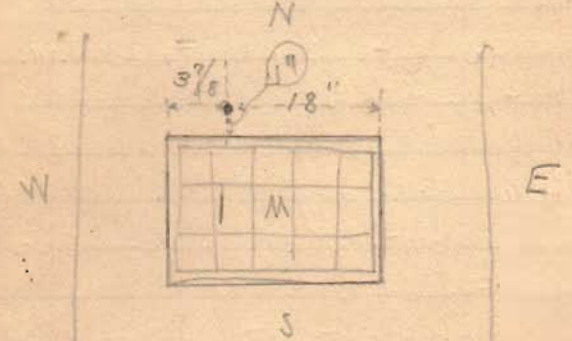
~~Main and Brown Mon~~
 S. end iron inlet, E. side Main St.
 face curb N.E. 24.95
 S. end iron inlet, W. side Main St.
 face curb N.W. - 24.85
 Stone fence east, West's fence, N.E. 42.80
 Top screw Hyd, N.W. sloping meas, 29.90
 Elec. Lt. pole S.W. 29.90

Mad R and Sandusky
 Stone 1884
 Edwards house N.E. 46.4
 Hyd. S.E. 29.2

Distances		plat	meas
Columbus - Main	to Mad R	526.5	525.57
Main - Cols.	to San'y	526.5	525.13
Sandusky - Main	to Mad R	526.5	527.8
Mad R - Cols.	to Sandusky	526.5	525.0 ✓



Cent is 1" N. of Water Wks Valve box
 " 3 7/8" E " NW < " "
 " 18" W " NE < " "



Dr. Young Surrey Lot 177
on Columbus St.

Meas. dist: 525.57

Plat. " : 526.50 Shortage .93

$.93 \div 8 = .11\frac{5}{8}$ to each lot on line

Surplus on Sandusky = $527.8 - 526.5 = 1.30$

$1.30 + .93 = 2.23 \div \frac{525.0}{25} = .105 \div 8 = .013$

$55.00 - .11\frac{5}{8} = 54.88\frac{3}{8}$ on line

$54.88\frac{3}{8} + .013 = 54.897$ on line 25'
from @ Columbus St.

$30 + 54.88\frac{3}{8} + 54.88\frac{3}{8} = 139.76\frac{3}{4} =$

Dist from @ Mad River $\frac{3}{4}$ of Columbus to
W. Line Lot 177

~~$30 + 54.897 + 54.897 = 139.794$ on 25' line~~

$30 + 54.109' 9\frac{5}{8}'' = 139' 9\frac{5}{8}''$

Col. $\frac{3}{4}$ Main

No monument. Could not use N.W. wit:
Use other three.

Main $\frac{3}{4}$ Sandusky

No monument. Used 4 reference
stakes (tacked).

Found monuments at Mad River $\frac{3}{4}$
Sandusky $\frac{3}{4}$ M.R. & Col.

July 16 + 17, 06

Dist on Mad River = 525.00

202

Dist. on Main Plat 526.5 - 527.98

$40 + 30 = 70$ $527.98 - 70 = 457.98$

$227.49 + 30 = 257.49$

Ang. San. $\frac{3}{4}$ Main $89^{\circ} 49'$

" " " Mad R. $89^{\circ} 55'$

" Mad R. " Col. $90^{\circ} 04'$

" Col. " Main $90^{\circ} 10'$

Dist. on Mad River 525.00

$525 - 70 = 455.00 \div 2 = 227.50 +$

$30 = 257.50$

Set spike at 30' N. @ Columbus
also at @ Alley on Mad R. at
257.50 from @ Sandusky

West line Lot 177

and O Line Columbus

This line $139' 9\frac{1}{4}"$ from O Line

Mad River and $139' 9\frac{5}{8}"$ on
line 30' N. of O Line Columbus.

cut in curb on line.

On alley Line $525.57 + 1.13 = 526.70$

20 Surplus $21 + 8 = .02\frac{1}{2}$

$30 + 110 + .05 = 140.05$

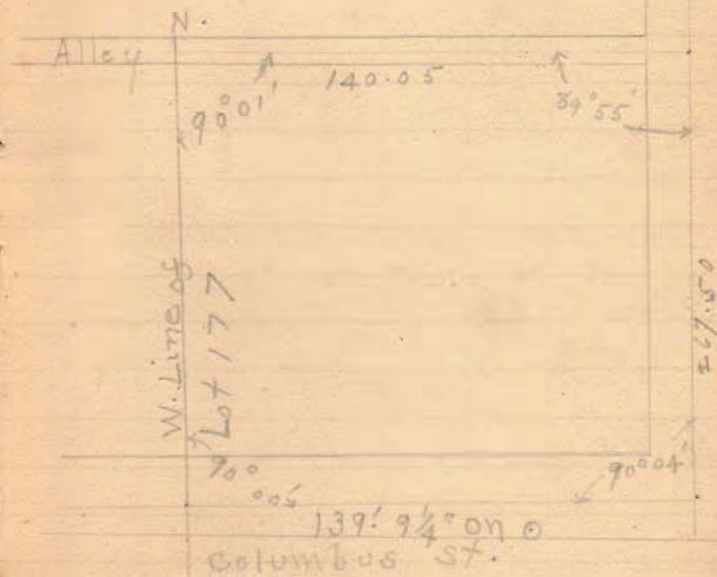
offset 3' 6" E. Run line
through hall to Columbus St.

Set stake at S. side barn on line (tack)

Cut mark in N. side brick building
 $7\frac{7}{8}"$ E. of W. side building

Set stake at N.W. \angle Lot at Alley line (tack)

\angle at N.W. \angle Lot 177 $90^\circ 1'$



Elam Buckwalter 40a tract

Aug 9 - 13. 1906

Line "A" - at N.E. \angle of tract. - found
stone by oak at intersection of
N. line of Sec. 2nd Ludlow line
- with Ludlow S 15 E.
at 742' cross small ditch.
at 1023.80' old fence post at
N.W. \angle of M.C. Boals.

Line "B" - with W. line Boals S 4 1/2 W.
at 606.5' stake at S. \angle Boals
in W. line Main St.

Line "C" - with W. Line Main St,
S 28 1/2 W.
at 39.6', ang in W. \angle
NW sides Main St.
this pt. is 30.7' N. of N. side
of 40' proposed street.

Line "D" - extending W line of St. north
N 5 E.
at 167.35 NE \angle John P. Snyder.
(This line runs about 8" east
of corners set [I understand] by H.C.
Moore, and is 8" E. of cor. as
fenced.

764
INDEXED ON MAP

Line "E" turning L. 90° ; N85W.
 - with N. line Snyder 237.1 to
 stake 16.5' W of Snyder's N.W.
 < fence post.

Line "F" turn L. $90^\circ 01'$, S5W
 - with W. line 16.5' proposed alley.
 at ^{198.05} N. line proposed 40' st.
 at. 482.75, ang in alley line.

Hamilton Bros. Surv.

Columbus and Detroit

4 bars at crossing

- E. bar - Lamp post, 26' 11", Tel. pole 28' 11"
- N. bar - " " 19' 11", " least stop 31'
- W. bar - " " 27' 11 1/2 " least stop 39' 7"
- S. bar - " " 19' 9 1/2 " Tel. pole 30' 5"

Detroit and Sandusky

Stone 1884

Lamp post N.W. 29.9' Hyd N.E. 30'
(Cushing says iron pin at X)

Detroit & Chitticothe Mon - "M"

Top screw hyd SW. 37.4'

Iron lamp post N.W. 28.2'

E. end iron ulster at face curb N.E. 26.6'

" " " " S.E. 26.8'

(field book 102 p 10)

Columbus & Elm

End of 20d spike set in cement curb
covered, even with cement paving (J.C.W.)

Lot # 111 Bellef

17

Detroit

meas

Dist. Sandusky to Col. 526.5 525.4

" Col. to Chit - 526.5 527.27

Sandusky

Detroit to Main 526.5 528.05

(meas 528.45)

(Meas. S. on Detroit from Sandusky,
the dist 525.4 comes 20 S. of S. edge
of O. & in cut track



Columbus Ave

Dist. Main to Detroit - 526.5 ?

" Detroit to Elm - 501.5 500.56

(Col. to Chit on Detroit Meas 527.60)

Elm to Detroit on Col. Meas 500.55

San to Col on Detroit 524.85

525.40 - .55 =

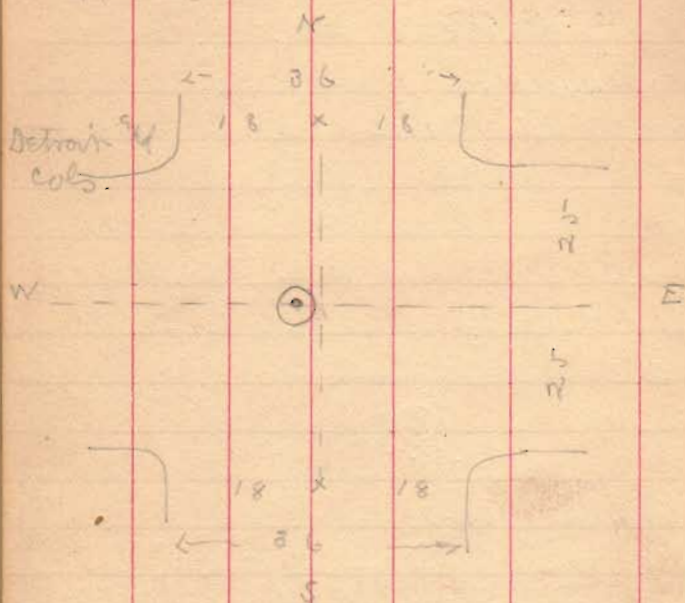
524.85
527.60
1052.45

INDEXED ON MAP
765

525.40
527.27
1052.67
1052.45

San to Chit Meas 22 chas
of meas given in book .22

Detroit to Main on Colo-meas 528.85



Meas bet. curbs on Detroit just N.
 & S. of Colo. = 36'0" exact
 a line connecting the middle pts
 bet. these curbs passes 25' (3")
 east of bar at \odot St.
 dist. elm to Detroit 500.50
 + dist given above 25'
 500.50

Checking dist (500.86) as given in
 city record.

Meas dist bet. curbs on Colo =
 50.00 within 1/4"

Half way bet. curbs is in line
 with X at Main & Colo & strikes
 42' S. of bar in West at Colo
 & Detroit.

524.85

.42

525.27

which is .13 short of meas dist
 (525.40) as given in City record

Detroit to Main on Colo (between mans)

as set = 528.55

.42

2 | 528.60

264.30

5

269.30



Main 40

528.60

Detroit 30

86.50

ally 16.5

2 | 442.10

86.5

221.05

Check

Main 40

221.05

1/2 ally 8.25

269.30

etc.

2 | 528.35
 264.18
 5

269.18

Dist on Detroit
 " " Main

525.27
 524.98

2 | 1050.25

" " Alley N & S

525.13

Cols - 40'

Sandy 30

Alley E & W 16.5

86.5

86.50

8 | 438.63

wid per lot - 54.83

Shades per lot .17
 8

526.5

1.36

1.36

525.14 check ok - 525.13

Mean N on alley

Cols 40'
 Lot 54.83
 Lot 54.83
 Lot 54.83

209.41
 54.83
 149.66

AW < Lot III 204.49

L-S - Saw. ^{and} alley - St. 89°50'
 Cols and " N.E. 90°08'
 Main & Saw SW 90°10'
 Cols & Main N.W (computed) 89°52'

Cent line alley N. & S. meas 7.2' from
 old brick foundation, sandy, keelston &
 old Wisconsin block
 Dist bet. curb, at N. side Cl = 15.6'
 is - 9.6' W. of Dr. Watson brick stable
 is at curb bet curb, S. side Sandusky

Checked and re-checked all meas, &
 set stake at SW < Lot III = 30'
 N. of SW < at E line alley

Main St.

Dist (Richy and young sewer) 524.98

Colo - 40

Alley 16.5

Sewer 30

86.5

8) 524.98

438.48

Wid of lot -

Meas. N. from Colo.

Colo - 40

Lot 54.81

Lot 54.81

S. line lot III 149.62

J. pr. lot III → 27.31

N. line as de-
scribed in deal } 176.93

54.81

27.50

27.31

from Cent Main to face of square
stone under iron column at N.E. <

Millinery store = 39.29' a

being 13 3/4" S. of N. E. < of said stone

from Cent Main to face of white
limestone door sill at S.E. <

Sinnerker Undertaking room = 39.40

point coming 31 9/16" north of

south end of said stone, and about

13" north of north side of wall

Meas. E. from 30' stake on alley
line 118', came 15" W. of post
at < in fence + same dist W
of W. line of Church produced S,

at 136.7 NW < brick bldg, 1 story or
near Millinery Store.

at 176.8, Kiel mark + on brick bldg,
which mark is 45' W. of face of square
stone at NW < millinery

$$\begin{array}{r} 176.8 \\ 45. \\ \hline 221.8 \end{array} = \text{front of brick bldg}$$
 (millinery) to stake in alley

$$\begin{array}{r} 221.8 \\ 39.29 \\ \hline \end{array}$$

$$\begin{array}{r} 261.09 \\ 8.25 \\ \hline \end{array} = \text{E. line alley to Cent Main}$$
 along S. line Presch lot.

$$\begin{array}{r} 269.34 \\ \hline \end{array}, \text{Cent alley to Cent Main}$$

To locate N. line of millinery
bldg - -

Meas. N 18" from point on
stone at NE \angle

$$27.31 + 150 = 2881 \text{ from}$$

S. line of lot III.

also Meas. S - $(3000 - 2881) = 119$

from stake in alley = 2881 from
S. line of lot.

Run line bet. points, 28.81' from
S. line of lot III, and found
then the N. line of wall 45' W
from NE \angle of millinery - meas about
.55' S. of line. (foundation on ground
meas .20') $28.81 - .50 = 28.26$

NW \angle of brick build. meas .20' S. of
line. $28.81 - 20 = 28.61$

fence line at rear Presch
meas .20 S, & jogged N
so as to meas 20" N of line as
run.

Set stake in alley at

$$29.83 = (57.83 - 25.00)$$
 so as to
leave 25' N. to NW \angle of lot.

Survey for John Maxwell

found iron bars 24" N. of
sidewalk as described in
deed of Wonders to Starkey

vol-100
p. 220

found iron bar all P.M. at
NW \angle Starkey, and found
bar at NE \angle Starkey, but
bent over toward S. but
meas to bar at NW \angle = $11\frac{1}{2}'$ o.k.

Set up over bent bar & set
west at $S 18\frac{3}{4}^{\circ} E$, and came
out about 28" E of SE \angle of
current chicken house on Starkey.

Meas S.E. 62', & meas
N. from bar at SE \angle Starkey
166.7' and missed by about
3". decided this day &
set stake 24" E. of line with
S side corner chicken house which
point checks dist to bars at NE &
SE \angle s within about 1" each way.

E. Colo. Ave.
A. R. Richey 1/2 da

Set over bar at SE \angle
Starkey & set N 2 W, & found
course run into Starkey's
house.

Set over stake as set &
found course to bar at SE \angle
Starkey = $S 2\frac{1}{2} W$.

Sept. 27 / 06 10 am

(Dennis hand!)

766
INDEXED ON MAP

Survey for Dr Sniffin
Eastern Ave, by E. end
Brocery.

Start meas. at SE \angle of Skem
Meas. E. 119' set stake -
which stake is in line with
old fence at E side of
Sniffin lot. (Dad calls
for old garden fence.)

Meas. W. from line of
fence produced N. to
E. line Jamesfield Ave 143.7
It to NE \angle Skem. (old
fence line)

Meas E. from NE \angle Skem -
5 ft. set stake

Meas E. 40' more set
stake.

Meas E. 40' from SE \angle Skem
set stake.



767
INDEXED ON MAP

A. J. Miller - Lots in 23
Hubbard and Snyder Add.

N. Line Corp - Iron bar

Tel. pole E. 31.55"

Maple, 15" S. of W. 29' 90"

997.7' S. of Corp line - Iron bar

S. E. < house 42.75'

N. E. < house 50.8'

A. J. Miller and Co
Factory lands.

Qr Sec. line (1/4/07) S4+W

Set stake, S 20' pc, 14'
from cent C S rd C.

N 88 1/2 W - 157' to
3/4" gas pipe in Qr Sec line

North on Qr line 20' to
iron gas pipe set in old fence
line, being set

N 88 1/2 W with old fence

at 152.7 line of old fence
posts, E. side R.R. - gas pipe

+ with curve R.R. and old
line fence posts, 159' to
stake

- S 88+E, 64.4. to
Qr Sec line

- N with Qr line 1.8
to iron bar

- S 88+E to iron pipe

- 46' to iron pipe
- L 10° 37' 75.5' to iron pipe

19' from cent T+OC

- East 10'

David B Holland

vs

Cincinnati Sandusky ^{2nd} Cleveland R.R. Co

August Term 1871

Clerks Office - Logan Co.

District Court Record - "D" p.p. 129-130.

14' from & track

Case 2567 - Common Pleas
Appearance Docket #4 Page 394
Common Pleas Journal Q - p. 68

May Term 1869

This Court granted: 50' from & track

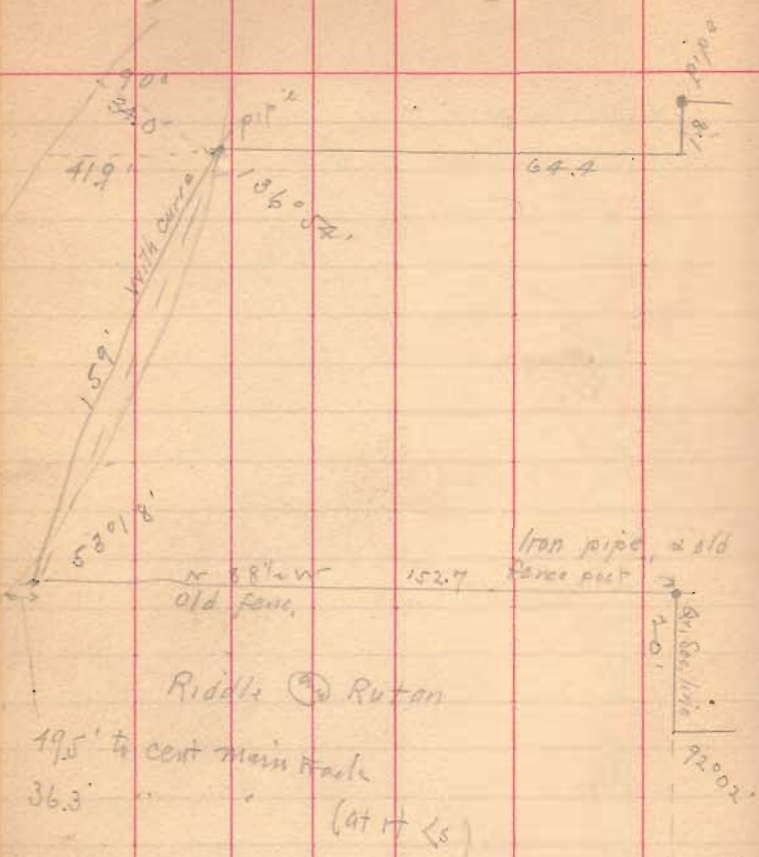
E. line 11 to R.R. \times 14' from
= 136.7 ft. from NE \angle 85 $^{\circ}$
to SE \angle 20' strip of Campbell

S. line of Campbell 20' strip from
station by R.R. to Rv. line 157.0'

S. line passes 9.5' ds of SW \angle of
factory bldg.

det \angle at R.R. NW \angle 136 $^{\circ}$ 54'
" " SW \angle 53 $^{\circ}$ 18'

SE \angle at Cor. Rr. line \odot S. line of
20' strip = 92 $^{\circ}$ 02'



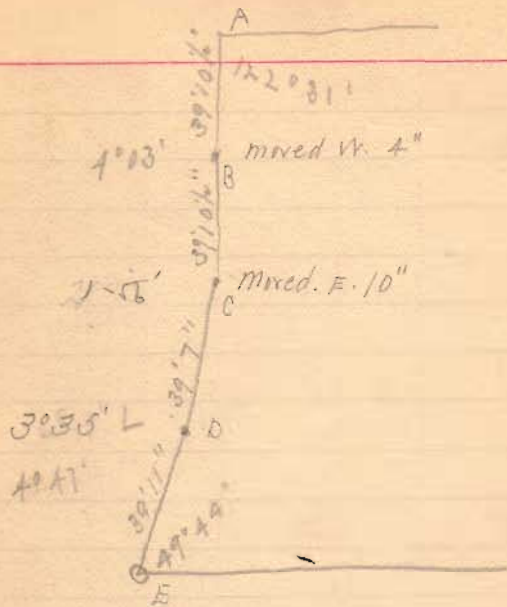
Riddli (R) Rutan
 49.5' to cent main track
 36.3 (at 17 <S)

Iron pipe, 2 old
 Range post
 2.0'
 92.00'



768
 INDEXED ON MAP

12' from center of RR
 136.7' allowance of RR



- A - 33' 11" from cent Main Line Proj 4
- B - 35' 8"
- C - 36' 0"
- D - 36' 7"
- E - 36' 11"

Sear
Chillicothe

J. F. Diemer lot survey 38

Auburn ^{and} Ludlow. Iron bar

Hyd. N.W., 87.30'

SW \angle stone foundation house, NE, 68.56

Iron lamp post E.E., 27.40

NE \angle of house SW 68.85

(This marks intersec. Aub. Av. with Ludlow St
from N, Ludlow line intersects cent.

Aub. ~~av~~ 8.33' W. of this bar.)

Aub. ^{and} Powers North - Iron bar

Lamp post, NW 28'8"

Hyd. SW 71'

Cooper ^{and} Ludlow - NO iron

Chillicothe ^{and} Powers, Iron bar

Hyd. NE, 26.05'

Wind. iron inlet, face curb, SE, 23.54

Eastern Ave ^{and} Ludlow - Iron bar

Lamp post, N. 23.3'

Maple, SE, 54.4

Maple SW, 32.0'

Auburn & Park ^{state}

Fence post NW 38'9"

" " SE, 33'4 1/2"

Hyd. SW 24'11"

Dist. on Auburn, Park to Powers N. 540.3

769

INDEXED ON MAP

Joe F. Dwyer

Spike (Temporary) set in cur
Ludlow St. opp. S. side
of alley near Soules NW

Tel. pole SW	17' 1"
Holding post SW	19' 1"
NW, foundation, N of 2	34' 0"

Meas. W. from SW of Soules as
fenced - along N side Auburn -

48'
49'
49'
100'
100'
15'

361 = to Cur Powers St.
checks deeds ok.

Drove gas pipes, 24" long in
N. line Auburn 48' ^(NW) 97'
W. of Soules SW

E. Auburn Ave ³⁹

361.4 SW of Soules to Cur Powers

CSE, Powers N, N 5 E

408.5' E. line Powers to cur
Ludlow St. on S. line alley

Meas. E. along S. line alley,
Commencing E. side Powers:

15'
100'
100'
42'
42'
42'

326' to NW of Soules line.

Drove gas pipes 24" long
242' and 284' E of E. line Powers
^(NW) each bar. 218' N. of
bars on street line.

Line along Ditch

Commence stake NW¹/₄ Horn
at 107, old fence post E.
bank of ditch N 2 1/2' E

at 193.4 Cent S. rail T & C
Main track

at 203.3 (about) Big 4
Rt of way - 5' 0" N. of
Cent of N. rail T & C.

at 1141.8 stake S. side T & C Rt of way

N. line || to R.R.
at 455 stake 5.0' from
T & C Rail (and)
17.0' feet from Cent
CS & C Tracks

Dist bet. stakes, N. line, 60.9'

E. line -
Commence 24" N. of cement
sediment -
at 159 stake at N end
10' alley
at 159+165 5 ft N.
of N. rail T & C & 17' from
Cent Big 4.
at 159+984 stake at
T & C Rt of way
at
at 147' found remains of old
oak stake in line as run.

Corners as set

NE \angle - $\frac{3}{4}$ " gas pipe @ p.c. coal @ slate

SW angle at NE \angle $116^{\circ} 13'$

at 30.5 N. of N. line cement sidewalk
pass 8.3 E. of 2" Plum tree
(cherry)

NW \angle $\frac{3}{4}$ " gas pipe @ p.c. furnace
slag

with hole, in top big boulder, 3' 2"
from N. end thereof

N 77 W. 42.3'

Cent. S. rail, ~~small~~ main line 51.7'

T. & A. E. N 2 1/2 E

Cent. S. rail C.S. & E. N 2 1/2 E, 76.9

SE angle at NW \angle $77^{\circ} 02'$

at NE \angle and NW \angle 's. Horn, found
slates set by S. B. Chapman.
These slates taken up $\frac{3}{4}$ "
gas pipes driven each place

at SE \angle . with -

SE \angle foundation, Wood's house NW 23.80

SW \angle " McCracken's " NE 18.15'

Meas S. line on N. side Colo. 50.4'

W. J. Orr Surv, E. Colo.

May, 21, 07

Found stake SE \angle , set by JCO.
Found stone SW \angle " " HCM.
at NW \angle , set stake at Redkeys
SW \angle fence post
at NE \angle meas. W. 111' from
Hubbard's NE \angle \oplus checked
meas from wit. trees. - set stake

Cse. W. line N 4 $\frac{1}{4}$ E.

Mit. stone SW \angle ,
Sugar 7", North 8.55'
ash, 10", N of E. 22.2'

S. line on Colo, S 84 $\frac{3}{4}$ E, 112.1'

at SE \angle , set sandstone 4x4" \oplus
inches. wonder set stake

Mit. R.O, N of W (21") 11.0'
W.O. W of N. (21") 9.4'

Cse. E. line S 4 $\frac{1}{4}$ W

Stake at NE \angle Wit. 1 -
old wild cherry stump (old wit) 16"
E. at Hubbard's N line. 36.0
apple, 7", East, 22.3
apple, 8", NW on Redkey 12.2

N. line 111.0'

Meas. E. line N 2 S - 460.6'
" W " N 2 S - 440.2'

Wes. Barton

Brown and Mad River
 Brown and Park
 High and Mad R.
 High and Park

Brown and Mad River - Mon - 8/25/02

S. end iron inlet W. side Mad R. - face curb.
 N.W. 21.10'
 S. end iron inlet, E. side Mad R. N.E. - 31.60'
 Top screw hyd. S.E. sloping meas. 23.25'
 This mon. in cent Mad R. and Cent Brown, W.
 of Mad R. and 15' N. of S. line
 Brown, E. of Mad R.

Brown and Park "M" 8/20/02

Hyd. S.E., sloping meas. 16.20'
 Elec. Lt. pole S.W. 15.63
 Tel. pole N.E. 26.85

High and Mad River - north

Maple 8" S.W. 20' 7"
 Maple 7" N.W. 25' 8"
 maple 8" S.E. 35' 4"

Survey for Wes. Barton

Line between lots # 625 and 626
 Bellefontaine.

High and Park "M" 8/19/02

- Mon. cont. High and Park, - west -
 Hyd. S.E. sloping meas. 15'
 8" Maple S.W. 29.40'
 Elec. Lt. pole N.W. 20.10'
 Stake, cent Park and High, East, - N - 54.80

- Distances -

	plot	meas
Brown, Mad-R, to Park,	501.5	499.75
High Mad R. " Park,	501.5	-
Mad R. High-N. to Brown	430.2	430.07
Park High-S. to Brown	430.5	432.2

771
 INDEXED ON MAP

Mad River

Meas - Mon. at Brown to iron bar at High
430.50'

N.B! This iron bar is 6" below surface
= High =

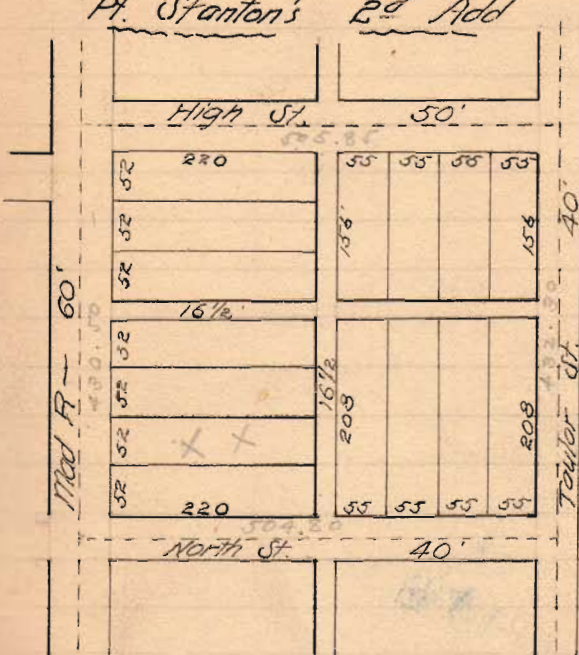
Meas - Mad R to Park 505.85
= Park =

Meas - High to Brown 432.30
= Brown =

Meas - Park to Mad River 504.80

Wes. Barton =

Pt. Stanton's 2^d Add



R. B. Wood, Surv. N. Detroit.

49

Detroit and Orchard.

Bar in plain sight

Detroit and Powell

pin $5/8$ " \times 12"

Iron valve bx. E of N. 6.9'

Same S of E. 8.5'

Same S of W. 2.60'

Henry and Powell - Iron Bar

Elec. Lt. stub, N.E. 48'6"

Elec. Lt. pole S.E. 51.3'

Ash tree south 28.1'

772
INDEXED ON MAP

Alfred Butler - Lot 106 - Bellef.

N- 616 - Marguis to Allen, 19' off N. side

R- 196 - Marguis to Niven 17' in cent. of
lot running back from Main St. full len

V- 569, Leister of Marguis, door to Niven, 19' off
S. side

Commence S&E of lot, 106, about 8" or 9"

N. of brick bldg. on lot 105

- N 19', - W - full len. 19' wide &c

44-46, Allen to Goe, 19' off N. side

135-427 Goe to Butler 19' off N. side

X Main and Chit. located from
W & - as shown on opp page

Meas Dist

Main - Col to Chit 527.6

Chit - Main to Detroit 528.0

Detroit - Chit to Col 527.85

Col - Detroit to Main 529.05

" - to Cent alley 259.65

N.B. Man at Col & Detroit is not
correct.

19' off N. side Lot 106

50

Feb. 7 - 1844

Jan. 19, 1848

773

INDEXED ON MAP

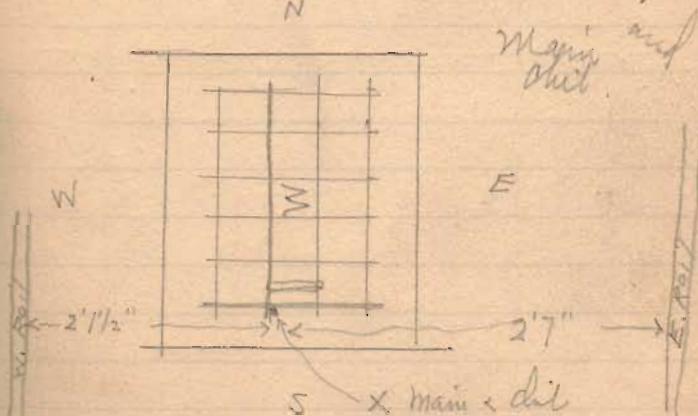
June, 17, 1851

Apr. 1, 1867

Aug 14, 1907

See survey of Hamilton Lot No. 111,
pp 17-21 of this book.

See also J.C. Woodcock survey of same
(Goe Run) Field Book # 59



On Club = Main to Detroit

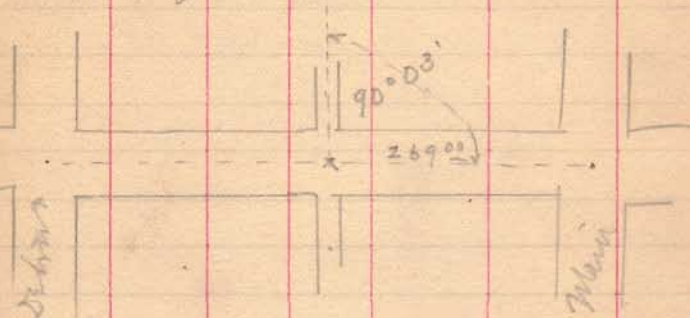
Meas Dist 528.0

Main	40	
ally	16.5	
Detroit	80.	
	<u>86.5</u>	528.0
		86.5

2)	<u>441.5</u>
	220.75

main	40
lots	220.75
1/2 ally	8.25
	<u>269.00</u>

Meas. W. from Main 269' to Cent alley



Detroit	20
lots	220.75
1/2 ally	8.25
	<u>269.00</u>

= Cent alley running N. =

at N. side club 9'8" W. of SW side
6'5 1/4" E of curb or W side
Dist bet curbs N side club 15'4 1/4"

at N line of lot 106

to W. side tel pole, E. of ground 6'10 1/2"

" E. " " " W. " " 5'1"

Stake set by J.C.W. N.E. of alley line - 9'0"

at S. side Col

to W. side brick E. Cobain's grocery 9' 1/2"

" E. - White limestone found-
stone, W. Rachel 7'0"

An alley - Cent club to curb, S. side Col.

502.5

25

527.5

Cent club to Col

Detroit 527.85

.42

Sub. 18) 527.43

Main 527.6

2) 1055.03

527.51 1/2 inches

527.0

Colo -
alley
Chit

40

16.5

30

86.5

527.0

86.5

2) 471

4) 220.5

55.125

Measure S. from curb, S. side Colo

Colo -
Lot
Lot

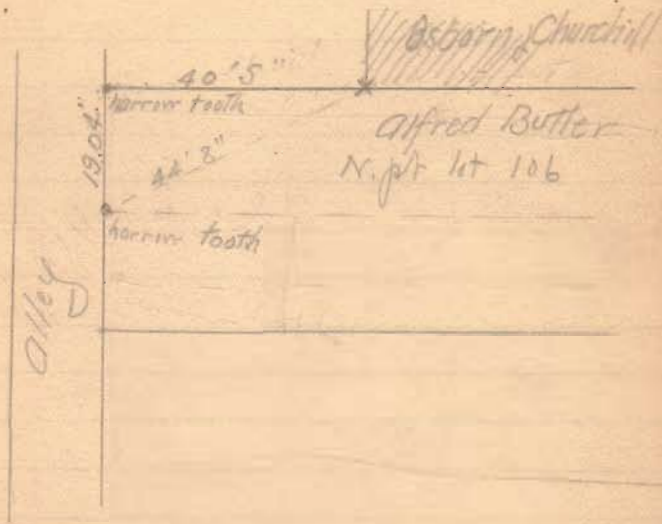
15

55.125

55.125

125.25

to N. line Lot 106

N.W. \angle lot, 106, harrow tooth
at E. side tel pole.
Wit = X mark on foundation
over hardware store, east, 40' 5"harrow tooth
S.W. \angle Butler's lot, = 19.04' S.
of NW \angle of lot. Wit:
X mark on foundation NE
44' 8"

Survey # 2873

1a. Hartley to Fred Roach.

Mich, 25, 1910

Stone at S.E. of Hartley 16' is 2.4" below surf. road.

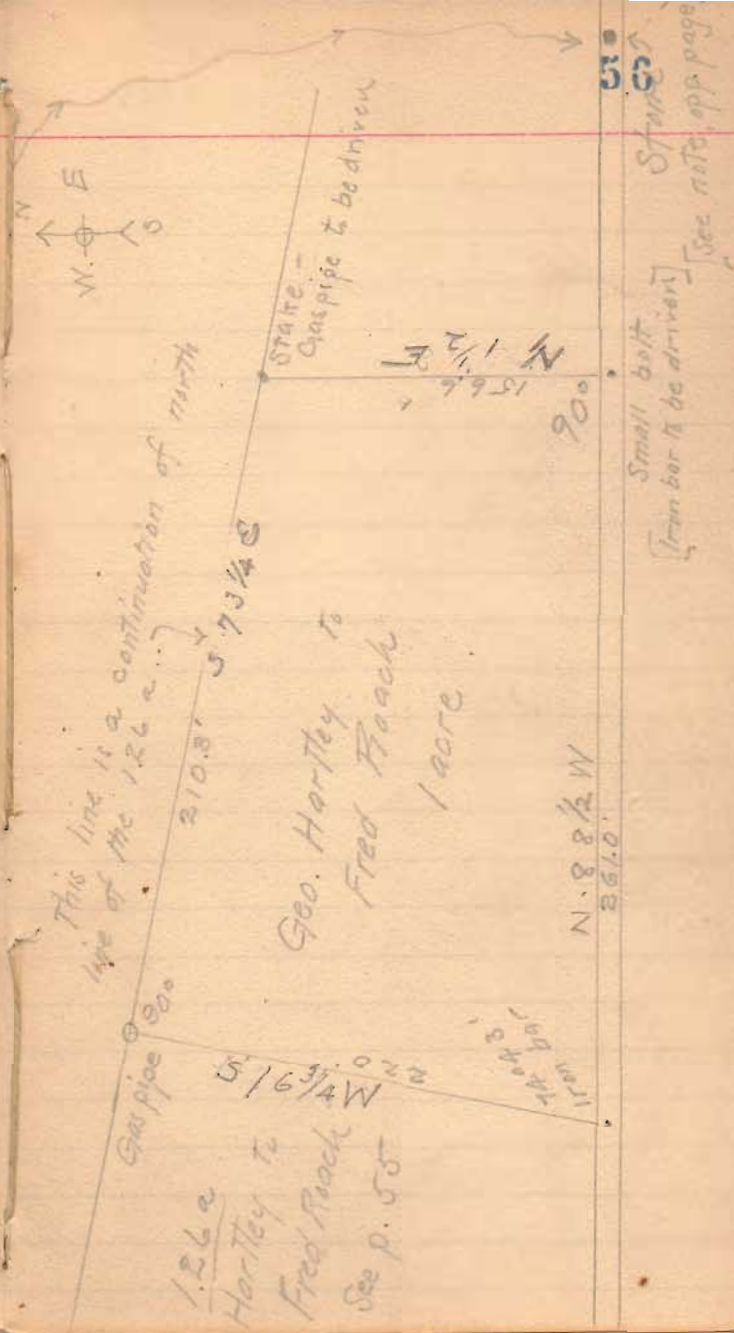
Set pointed stone with pes tile immediately over old stone. Walnut stake at S. side of stone.

May - 5 - 1915

Survey for Vernon Dowell - S. side of road -

The above stone & walnut stake are in south wheel track, in line with wire fence north.

W.N. 6" Elm. in fence line - N - 18.0
6" Elm N.W. - 26.7



Carton Pinos Sicut

1 ₁₁	8.43
1	10.10
2	11.60
+60	12.20
1+50	11.00
D+70	9.60

6.72
5.09
1.63

April 3/47 60
 Adjusting level on transit

Ins at center A to B = 1.00'
 A. 4.28 B to C = 1.00'
 B. 5.08 .80 A to C = 2.00'
 C. 5.92 .89 1.64

Ins at C
 C 5.13
 B 4.33 .80
 A 3.53 .80 1.60

5.13
1.64
3.49

Ins at A
 A 5.09
 B 5.897
 C 6.725 1.625