

= Contents = 9887-Rucks.

✓ Buckeye Port. Cement Co.	^{Survey of} 3
✓ Muzzley -	12-13
✓ Blair -	10
✓ Longlake - Hogan	^{TTRF - Sec 27} Bloomfield 18
✓ Eliza Huber - Pres. Wright	^{TTRF Sec 15} Bloomfield 22
✓ Markley (Fintley)	26-27
✓ Robt Smith	31
✓ Geo Sherwin	^{Sec 28} TTRF - Bloomfield 36
✓ C. M. Faulkner Dr.	39
✓ Hammon (S. of Kayler's Mill pond)	44
✓ Kauffman	^{Sec 34 - 47, 14 - 34} SW of New town 50
✓ Wm Short	⁷⁴⁹³ ⁷⁵²⁵ Monroe Tp 47

Commerce, stake by leaning
Sugar NW 1/4 tract #21
N 85 ± E

at 20.09 18" brackys & tree
old Sugar along 8' North
at 21.00 & brackys #2
(bearing of W. line tract #3 =)
N 6 ± W

at 29.82 pass large elm
in fence line,
at 32.00 edging lake

West line
Commerce leaning Sugar in
NW 1/4

S 8 1/4 A E
at 16.33 SW 1/4 Duff
at 41.30 cut pipe in line with
fence, W. side of lane
N.E. 1/4 br. fence, NW, 15 lbs
S.E. 1/4 br. SW. 18"

S. line, with stake N 85 ± E
at 39.92 old fence row to north
5 lbs W. of br. fence

E. line — with old fence
line 4' side of ditch
N 8 1/2 W
about 18 ± edge of lake
set stake for line at 17 ±
with small arch 3", E. 11 ft.

June 25/07
Meas. along pipe = 38.55 to iron pipe
at N side of pipe

Line set by J. J. Donnell

Commence in pole, 1 chain
W. of & parallel to E. line,
N 8 1/2 W.

at 8.64 ← 2 1/2" pipe

— N 62 1/4 W —

at 15.14 2 1/2" pipe in
wire fence

— N 9 1/2 W —

at 23.27 at wire fence
106 1/2 lks. west of stake
in fence (i.e. line as intended)

— N 2 1/4 W at 7.90
~~at~~ 18" Elm, Corner
tree.

— N 22 3/4 W at 4.83 1 1/2" pipe at
N. line 40 a
3.70 2 of NW 2

← N 6 1/2 W (wire fence)
N 7 W (6-25-07) to 2 1/2" pipe
7.57 E of Buckeye corner

N 2 1/2 - W (6-25-07)

Tract # 2

Commence buckeye < tree
at SW < tract & in N line
tract # 1

N 6 ± W

at 2193, NW < of water,
3 lbs of 8" wild cherry
(no buckeye near)

= N line =

N 85 3/4 E

at 370 big rail in line
at 1400 is far east as could
go on of water.

The woods shows 1 1/2 ch
beyond (1550 pines)

5

S line, S 86 1/2 W

This rail is 11.60 from cut marks

The 370 psi set 2 1/2" pipe
set 1" pipe 12 1/2 lbs w. limit to X

Blair Surv. 1/30/07

Prog N. line N 82 1/2 E
found stones at NW Blair's
2600 (N 3/4 Corner) @ at
SW of Shearer.

stones set by McCormick

at 8.04 pass. square stone
in fence line. set by H. Moore
as line Blair & Glasgow

at 8.15 stone set by McCormick
10 yrs ago.

Commence 4 hrs W. of the Hemore
 stone - a meas E.

at 13.90 survey line,
stone set by H. Moore

13.90
8

21.90 - NW Corner to Surv. line.

Blair E. line = 57 2

10

Start stone NW of Blair
meas W. along N. line Corner
at 13.29, old bush
stump, orig with tree
alex. Glasgow stated that
he set orig stone between
bush & oak just SW of
bush. the two trees were
so close together that the
roots overlapped

at 13.31 small 4"
oak taken as \leftarrow

21.90

8.15

13.75

4

55.00

13.75

4

55.00

Start at Surv. line stone & meas
W. (check) at 13.73 1/2 stone
set by McCormick

Sand statement to John G. Blair.

New Richmond Blair

V.M.S. 9971

RICHLAND TOWNSHIP

Meas. W. from spike
in R.R. 11. 52 1/2 corners out
14 lks. east of wire fence on
W. side of road.

Meas. N. along road from
stake in R.R. 11. 112 1/2 corners
out 31 lks. S. of Cent of
road fence to curb

With scrub apple	N 10 E	63 lks
6" Maple	S 23 1/2 E	40 lks
in SW \angle Fizzie Bello yard		

Ford Thompson
"Cooney"

} chcr.

Murphy 2/13/07 12

Bearing R.R. N 39-E
(near 38 1/4)

Dist along R.R. 48.00

N. line N 81 E 4.95 to Cent
road

Along Cent road S 7-E, 24.11
to Cent gate (call in 6 3/4")

With Cent gate S 39+W
at 17.08 S. line of Survey in Cent
gate

S. line S 82 W, 26.25 to
Cent gate at Rustland

N 28 W, 2.865 to Cent R.R.

(See next page)

Murphy -

13

Commence cent. C.S. & C. R.R.
at cent. of pike at Richland.

— with cent. R.R. N 39-E
(This bearing road. at 1 chain
offset from R.R.)
at 48.50, at S. line
A.W. Rose 1 acre pc.

— with Rose line, N 81 E,
4.95 to cent mud road

— with road S 7-E (6 1/4°)
24.11 to intersection cent
of pike.

— with cent pike S 39 1/4 W
17.08 to survey line.
(Found this line by meas.
north 8.23 from NE Simpson
4.70 a. pc.)

— with surv. line, a line
Elliott, S 82 W, 26.25
to cent' pike at Richland

— with cent pike N 28 W,
2.37 to begin at cent R.R.
= 75.54 acres.

Longbrake Survey
(Jno. D. Wright 80 a)

Along pike
commence in line of fence at
Wright's NW \swarrow - fence
with pike

at 18.26 cont Brandywine

at 20.12 fence line (near)

Mean N & S, through cut of
Wright's 80 a
at 10.55 (from S. line) cont Brandywine
" 20.50 stone in N. line

Along pike N & S (F)

Feb. 25. 1897

S. line -
commence at stone in S. line
Wright's
down cut, at 20.04 cont
open ditch (ret stone at 20.00 a)

from stone cont N. line of
Wright's NE \swarrow 20.02

John Prince
H. Hodge Longbrake } cler

Figure description of pc North
of Brandywine, & set
descriptions to
W. H. Longbrake
Care City Bank
Delmar

Longbrake - Dec 29 - T7R8

Commence cent pike,
SW \angle Wright, 80 a
S $89\frac{1}{2}$ E + (near $89^{\circ}55'$)
at 20.01 above, NE \angle 40 a
at 40.07 $\frac{1}{2}$ ditch (cent)

- N+W with ditch -

at 6.37 cent Brandyswin
at 20.04 old fence recognized
line between Longbrake & Wright
at 40.28 N. line Sec at NE \angle
Longbrakes 80 a
(25.14 = $\frac{1}{2}$ point.)

Bloomfield

19

N. line

N $89\frac{1}{2}$ W
at 20.02 stone in line
at 40.08 cent pike

W. line, with pike

Breaking South (F)
at 13.26 cent Brandyswin
at 20.12 place of beginning

up Brandgroni

Commence 6.07 N. of 83 <

Weights 80 <

- S 87 1/2 W

at	1.02,	N 72 1/4 W
at	3.77,	N 48 - W
at	8.33,	S 88 1/2 + W
at	18.55,	N 81 + W
at	21.91,	- S 79 1/2 + W
at	28.39	S 75 1/2 W
at	31.96	S 69 3/4 W -
at	35.18	S 89 1/4 W
at	38.88	S 83 W
at	42.22	Cent Pike

at point 13.26 from NW < Weight

80 new

Sec 15 T7R8
Elzey Huber Bloomfield

N line, along pipe

Commence at mail box in front of
Pres. Wright's house

Thence meas W. on pipe

at 10.31. set stake in fence line

Wright's Well

at 50.52 stone in pipe NW \angle Sec 15.

South along W. sec. line

Commence at stone at NW \angle

at 30.02 cent road

Set stake at 40.00

at 40.37 1/2 - iron bar

South line

Set N 50 lbs.

East-

at 40.48 pass 50 lbs N of stake
near SW \angle Wright

at 60.49 pass 47 1/2 lbs N of
Anderson post (N side) set stake in

W. P. Boughman
Walter Cox } cher 22

offer line

set stake for this at 60.00
at 80.90, came over 48 lbs N of
N. side of Anderson post.

Commence, stone SE \angle Sec 15

E. line of Sec 15

Set E 27 1/2 lbs (cent 18" Sugar)

N 1/4 E

at 40.31 1/2 N. side Anderson post
pass 24 lbs E. of post (80.90
of last line)

(Set west 2 1/2 lbs)

at 80.63 cent side, came out
30 lbs E of Amos Lee W. line
fence (Mr. Lee says on line)
and 23 lbs S. of S. side Anderson
post

N. line with cent pike
 start at Wright's mound
 box & measure across
 at 983 E end Wright's
 wire fence (E side another
 post)
 at 29.95, line fence

$$2.5 \times 2/3 = \frac{5.0}{3} = 1.7$$

 $\begin{array}{r} 80.90 \\ .027 \\ \hline 2 \overline{) 80.927} \\ 40.46 \\ \hline 20.23 \\ \hline 40.48 \\ 40.39 \\ \hline .09 \end{array}$ 	 $\begin{array}{r} 80.90 \\ .025 \\ \hline 2 \overline{) 80.925} \\ 40.46 \\ \hline 20.23 \\ \hline 40.48 \\ 40.39 \\ \hline .09 \end{array}$
--	--

$\begin{array}{r} 3 \overline{) 60.49} \\ 20.16 \\ \hline 2 \\ \hline 40.32 \end{array}$	$\begin{array}{r} 60.49 \\ 20.16 \\ \hline 40.33 \end{array}$
--	---

$\begin{array}{r} 80.77 \\ 60.49 \\ \hline 20.28 \\ \hline 50.51 \\ 10.31 \\ \hline 40.21 \end{array}$	$\begin{array}{r} 50.52 \\ 29.95 \\ \hline 80.47 \\ 2 \overline{) 40.23} \\ 20.115 \\ \hline 60.33 \\ 7.82 \\ \hline 60.33 \end{array}$
--	---

 $\begin{array}{r} W - 40.21 + 2 = \\ PW - 20.14 - 2 \\ H - 20.18 \end{array}$ 	 $\begin{array}{r} 80.47 \\ 60.33 \\ \hline 20.14 \\ \hline 40.22 \end{array}$
---	---

$$\begin{array}{r}
 50.52 \\
 29.95 \\
 \hline
 1) 80.47 \\
 2) 40.237 \\
 \quad 20.1185 \\
 \quad \quad 3 \\
 \hline
 60.34
 \end{array}$$

Williamson	40.23
	<u>40.21</u>
move E.	.02

Wright.	60.34
$50.52 + 9.83 =$	<u>60.35</u>
E. line - move W	.01

Markley - Survey

Clifford McBride
La Fayette Markley (clear)Commence stone in road
SW \angle lane- Run with W. line of Markley's
at 20.00 stake for dist.

" 40.00 " " "

" 40.30 Markley's wire fence

" 60.00 stake for dist.

" 60.35 wire fence to west

" 66.20 cont. Metz St. Sch.

" 80.49 corner pt. & K. line Sec.

$$\begin{array}{r} 2 \overline{) 80.49} \\ \underline{40.24 \frac{1}{2}} \\ 20.12 \frac{3}{4} \end{array} \quad \begin{array}{r} 20.12 \frac{1}{4} \\ + \quad 12 \frac{1}{2} \\ \hline 20.24 \frac{3}{4} \end{array}$$

20.24 $\frac{3}{4}$ Set stake at SW \angle Markley about
1' S of stone set by H. McNameeLine at run = 589 $\frac{3}{4}$ EE. line of Markley
Commence corner pt.
(about 300 ft. E. of W. prairie
joint disk)
South with E. line

at 20.11 fence E & W

at 40.29 wire fence on Markley

" 60.00 stake for dist. on

N. side of creek

" 61.00 in creek

" 80.46 stone in road

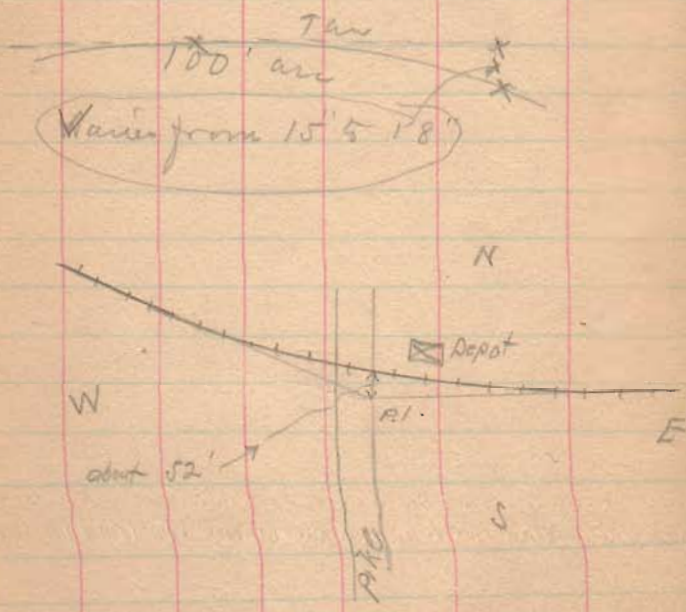
$$\begin{array}{r} 2 \overline{) 80.46} \\ \underline{40.23} \\ 20.11 \frac{1}{2} \\ \hline 60.34 \frac{1}{2} \end{array} \quad \begin{array}{r} 4 \overline{) 80.46} \\ \underline{20.11 \frac{1}{2}} \\ 40.23 \\ \underline{20.11 \frac{1}{2}} \\ 60.34 \frac{1}{2} \end{array}$$

Set stake at 60.34 $\frac{1}{2}$ at NE edge
of creek (stone set by H. McNamee at 60.35)
Set stake $\frac{1}{2}$ road N (60.42)

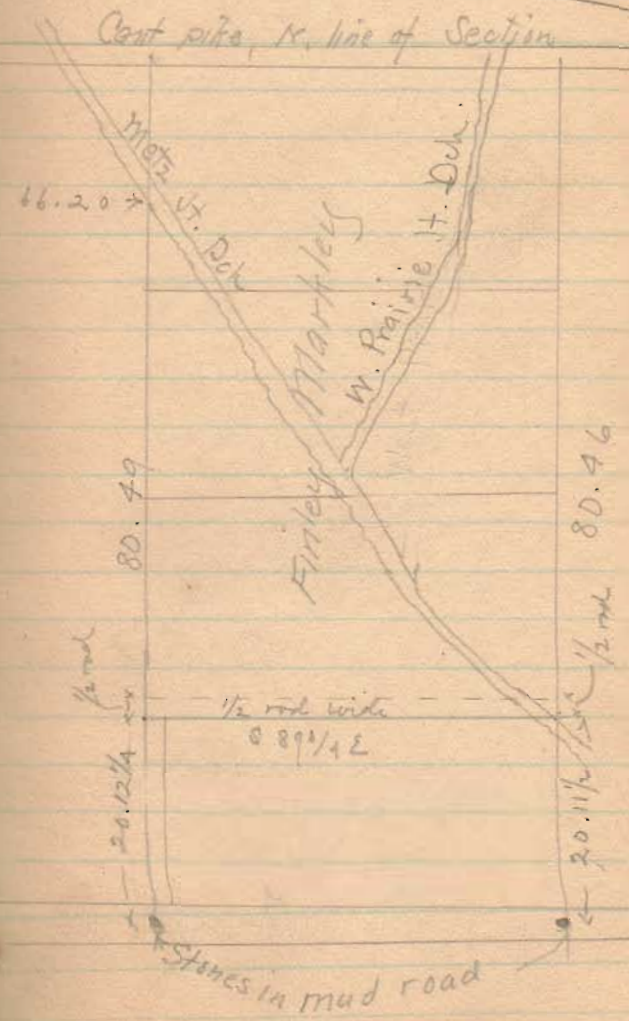
Curve out ^{and} O.C. at
Santa Fe.

P.C. about 600' E of pike
P.T. " 500' W. of pike
P.I. near E. side of pike
about 50 to 55' S of cent
of track.

Curve irregular, but,
seems to be about $1\frac{1}{2}^\circ$



Send statement to
Finley Markley
Lake View, R.F.D. #1



Robt Smith Surv. 3/15/07

Line # 1

Commence big stone in Rowlow
(W of center of road) at 810 <
Small ⁽²⁾ NW < Piatt
- with N line Piatt

Random N 74 1/4 - E
at 20.00 stone in fence line
at 31.22 < in fence line
- N 56 E, - at 35 ±° < Piatt, W woods
by boulder - both OK

Line # 2

N 72 E, Random
at 20.25, 3 oak <
Oaks all gone, set stone
CS & OK

Line # 3

N 43 1/2 E
at 2.79 stone with X

31

Line # 4

N 80 1/2 E
at 3.98 post at E side
macrochuck creek

Line # 5 - along E side
creek 66 lbs to corner
(plus N 9 E)

Line # 6 along N side of lane

at 4.27 set stone N 22 W,
50 lbs from stone at end of
line # 3.

S 78 1/2 W

Line #7 S
 #43 3/4 W
 at 167 boulder at S. of
 12a pc.

Line #8
 along 12a pc
 Random N 44 W
 at 13.50 Came out 4 ft.
 W. of stone in block line.

Line #9
 with Secor line S 32 - W
 at 11.96 stone with x a SW
 < Davis; with line 24" thick ok.
 Columning 8.27 further stocks
 stone at < Platt ^{and} Mott -
 35' of line #1.

Line #10
 with Davis line N 15 3/4 W,
 at 18.65 < fence, at
 4 1/2 lbs from Hick 15"
 (Compute brg. Hick (15")
 4 1/2 lbs S. along line 2" of 12" east)

Line #11
 S 78 W (Set S. 8')
 at 10.41 SW < Davis at
 3 W.O. <
 a . . .

at 20.84 pass 17 lbs S. of
 stone at SW < 27a
 Set stake for dirt at 4000
 at 40.66 Ludlow
 Set stake in fence, 8'S
 (See note on line #16)

Line # 12

Commence at 3 Oaks, at
10 A of Line # 11
N 15 + W

at 22.75 cent road

at 25.08, large W.O. stump
(decayed)Set large boulder in cut
old stump.

Line # 13

with Surv. line

S 74 1/2 W

at 10.85 came out 5 ft

S. of < set stone

flat sandstone several
small pe

Corrected Coe = 57.5 W

Line # 14

N 16 1/2 W S 16 1/2 E

at 2.55 set stone in cut road
flat sand stone, 2 small pcs same

Line # 15 with road

S 70 3/4 W

at 19.45 X roads

Line # 16 with Ludlow (2nd)
Cent road

S 15 E

at 21.64 set stone

at 22.20 set stone

not decided which stone will
be adopted as <(Line # 11 produced with come
at 22.20. Stone 21.64 is

in line with old fence to East.

If 21.64 is decided on, the
division line will turn from

hook

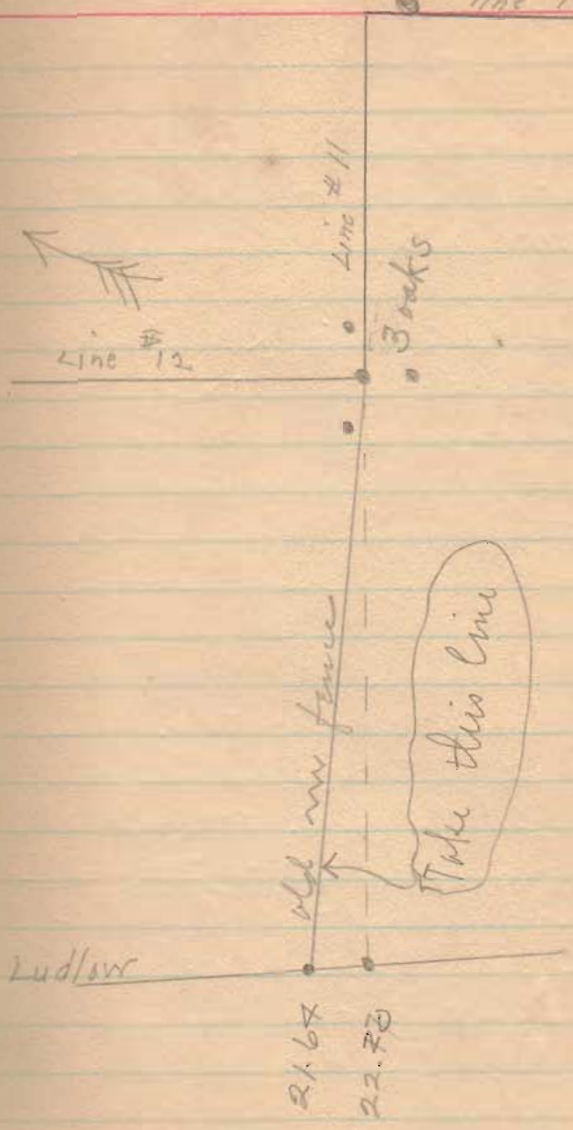
line #10

3 oak \angle , at 10.41 of line #11.
Line #11, from 0 to 10.41 produced, cuts Ludlow at 22.20 stone.)

at 46.85 stone at begin line #1

3/19/07

(Division line to run to 21.64 on Ludlow.)



3/23/07

(33.25, above)

35

Re-meas. S. line of 6516

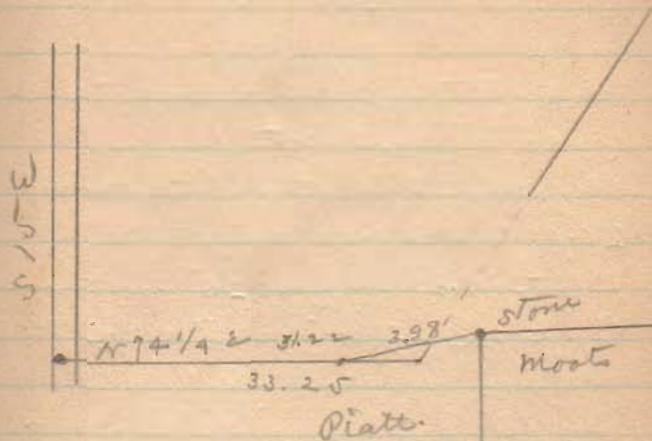
Start at stone in Sudlow
at 14.78, pass about 30" N.
of 20" pick. old fence was
4' S. of this tree

at 19.96 stone with x in fence
line. SWK orig 50 a

Dug up stone (boulder about
200 lbs, standing on end &
planted deep in ground) ~~and~~
found brick underneath.

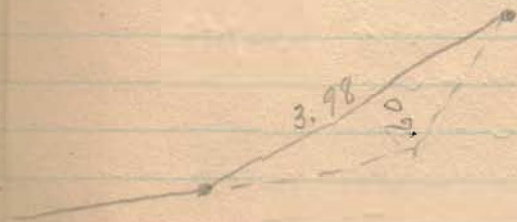
at 13.40 pass 3' S. of old
W. O. stump, which Mr. John
Q. Smith states was marked
by 2 hacks on S. side, ~~and~~
which he, as he states, Mr. De-
mead told him to cut a few
years ago because it was on
Smith's side of the line.

at 33.25, this line will
intersect Suway line produced
882 m, 150' line



Producing line # 9.

at 8.26 pass 2.6 lbs Pegler
of stone at N 66 W Demmead
at 10.36 strike line #1
produced at 33.25 of line #1



Geo. Shearer Survey $\frac{1}{4}$, 07
Survey of 26 Acres

ch. cts. { O. C. Richey
Geo. Shearer } John Groves
Nichas. Lamborn

Found stone in road at S. E. c. of 60 acre tract

Measured north with road 20.00 ch. and 7.60 ch.

Dist: 1.30 ch. goes 26" north of S. edge of bridge. Bridge has been rebuilt. Mudsill shows bridge has been widened. No stake set temporary stake in road at 27.60 ch.

Line A.

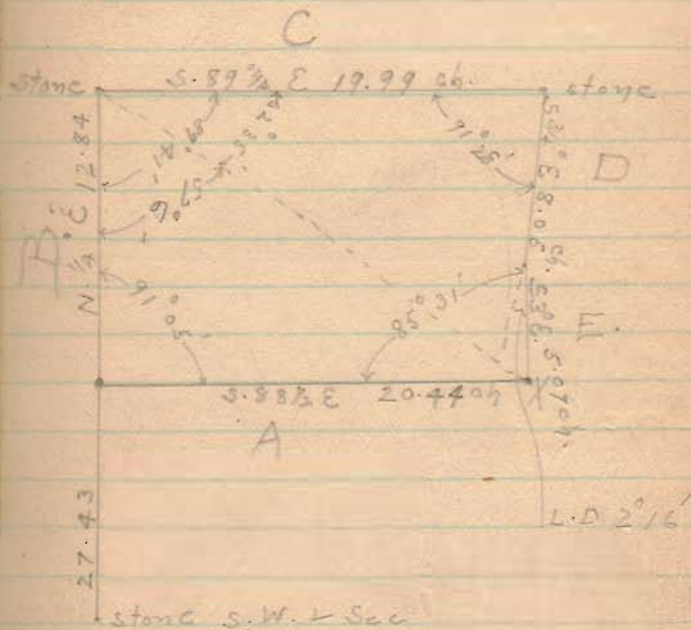
N. Side 60 A.

Measured west 20.44 ch.

dug for stake. Found it at .51 ch. from Burr Oak 14" and 27.43 ch. from S. W. c. Sec.

Set 4" tile filled with boulders for 20.44 ch. from stone set. see Line C.

Move temp. stake 1 link W.



Cor. X pole was 8" E. of true c.

Line B.

Line C

Line D.

Set stone at 5.00 ch. brickbats
around stone. N.W. + Groves ^{2nd}
S.W. + Rairdon.

Dist: 8.00 ch. Sets niggerhead
stone with brickbats

Line E

Set stone (niggerhead) with broken
tile at S. end Line E. at point X.

Stokes Twp

C.M. Faulkner Survey

sh } O.C. Pichey
cr. } Noah Owens

Flag - M. Miller

Faulkner Survey 07

Found stone N.E. 1/4 Sec.

Measured west.

Set temporary stakes at

20 ch O.K. Dist. 20.07 ch

40 " O.K. Dist. 40.14 ch

Found 1 stone N.W. 1/4 Sec. ¹⁹⁰ road

Total distance 80.28 ch

Set stone. brass tile under ^{1/2} ground
at 20.07 ch. ^{1/2} to Faulkner ^{1/2} Taylor.

set on line with section corners.

Present D.C.M. Faulkner, F. Taylor,

M. Miller, Noah Owens

at 40.14 on wooden bridge

Drove 3 nails \therefore

N. 89 $\frac{37}{4}$ W



Stokes TP.

Found stone at S.E. 1/4 N.E. q.

" " " S.W. 1/4 N.E. "

Measured east 40.16 ch.

Set stone with brass tile

at 20.08 ch for ^{1/2} Taylor ^{1/2}

Faulkner on line with 2 stones

above N. 89 $\frac{37}{4}$ W

Run Line through north
set stakes on line

Sec 34-4-14

Apr 10/07

Harmon Survey
S. of Kayler's mill pond

Beaming Sit. Lake Pk., from
hill just S. of gas house
woods, looking E to Fair
ground X roads

~~S 86 3/4 E~~

S 86 E

Commence SW \times Sec 34
as found from apple tree with
fence S 86 E

at 20.22 in line with

Harmon fence to N.

Set stake at 20.00

at 27.90 Harmon's E fence

Set stake at 29.00

27.90

20.22

7.68 $\times 4 = 30.72$

total = 30.56 rods

~~4 130.56 rods~~

~~7.64~~

Ira Hankinson }
Claud Kayler }cher

~~20.18~~

~~30.56~~

~~4 150.74~~

20.18

7.64

27.82

27.90

27.82

.08 excess

.08 excess in 28 d

= .15 excess in 20.18 d

= .02 " " 7.64

fences ok.

\rightarrow forked apple, S 28 1/2 E. 55 lbs

E line N 4 1/4 E

at 18.26 Cooperation line

at 21.30 stone N 2 \times Harmon

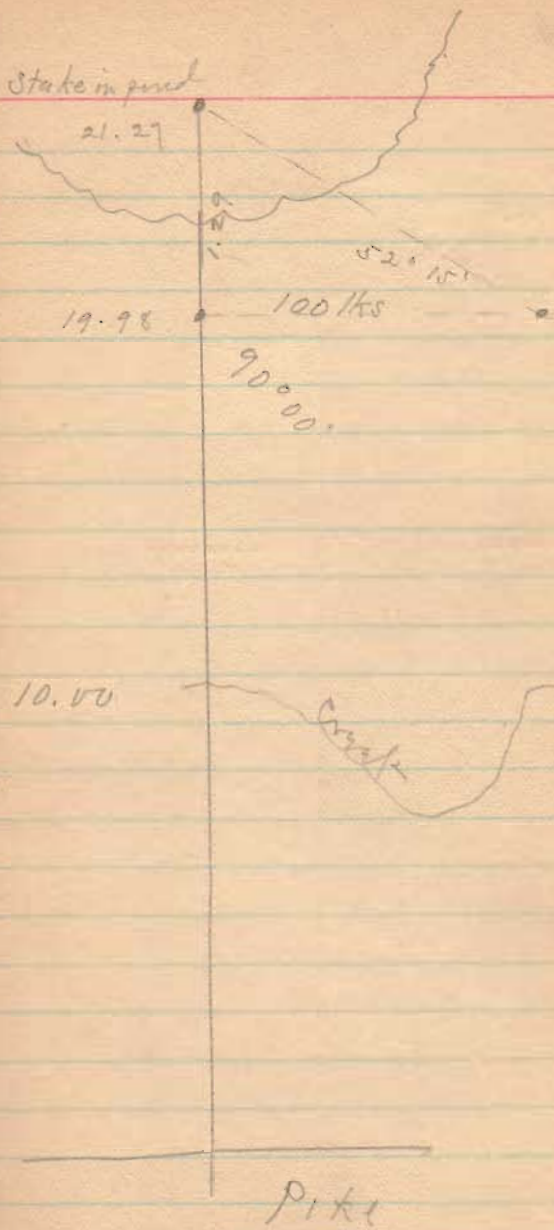
21.30

4

85.20 rods = 20 excess

N line 7.65 to fence
 & line stake in pond set
 by Bishop for NW

West Line



Wm Short Surv.

Found stone and brick cor. at Xroads
 Wit: 30" bearing Burr Oak, N 77 3/4 W, 22 lbs
 15" Jack Oak, N 2 1/2 E, 43 1/2 lbs

— with Prickertown road S 52 1/4 W (✓)

(A) at 1810 set stone with X. (✓)
 set it on top of flat stone

— N 17 1/4 W,

(B) at 5.00
 set stone with X on top of
 original < stone (orig stone 18" deep)

Wit. 13" Walnut N 56 1/4 W 34 lbs
 18" W. Oak N 32 1/4 E, 74 1/2 lbs
 14" Walnut S 18 1/4 E, 84 1/2 lbs

4493 } Mil. Surv. 4525 } Monroe Tp. 47

O.S. Fultz }
 Henry A. Grimes } Ch. Cr.

— with S. line Short S 74 1/2 W

(C) at 1886, cor post, (anchor post)
 at S.W. < Short
 (No old wit found.)

— with fence line (Short w/ Pickets)
 (D) (This fence built in old fence line, and
 long accepted as land line)

N 16 3/4 W
 at 2.93 intersecting
 line from C.

Commence again at stone at
X roads

— with road N 15 1/2 W (V)

(E) at ~~4.22~~ (near fence S 54 1/4 W
at 14.32 set stake (temporary)
in line with fence
(should be 3.32)

— with fence S 54 1/4 W

Set N. 18' (Random)

(F) at 9.52 D.R. 2° 37' (S 57° W)

at 21.945 D.L. 2° 37'

at 33.02 W. line of Short

(N.B!) These notes are for the 18'
offset line, no stakes set in true
line.)

(along road at E side)

run N. 30° E further down road

line - making 17.30 from X roads


MW. 14.07

Run N 15 1/2 W, with road
at 16.50 stake (temporarily)

— S 54 1/4 W (Random)

at 33.43 W. line -

— with W. line S 16 3/4 E 5.09

— N 15 1/2 W - 16.55 - stone above 

W. line, 13" Burn oak N 57 1/2 W 11.8 lbs

16" Burn oak S 60 W 7.8 lbs

— S 54 1/4 W, 33.43 - boulder with X on
top another

— S 16 3/4 E - 5.14

Kauffman Survey
SW. of Lewistown

50

at SW \angle Kauffman, plant
long sandstone & pos. 6" drain tile
Meas. N. along line (W. line Kauffman)

North (mag.) at 14.01, NE \angle Wolfe
(stone)

at 29.12 stone, NE \angle Hughes rd.
SE \angle Lew. Plum.

at 41.28 cont. pipe - (about where
stone is supposed to be)

$$\left(\begin{array}{l} 41.28 - 10.16 = 31.12 \\ 31.12 - 29.12 = 2.00 \end{array} \right)$$

at 31.12, stake for line bet.
the two Plum Pcs.

Set S. 50 lbs for Cent. Sec -
23 T 7 R 8

— Meas. Eastward (18902)
along Cent. Sec.

20.00 Set stake for dist
at 40.37, found stone cent
pike at intersection of Cent.
of road S. part with Plum's
Set stone on top orig. stone
with:

$$\begin{array}{r} 2 \overline{) 40.37} \\ 20 \ 185 \end{array}$$

Set stake at 20.185 as
cent N. line SE Qr. being
NW \angle of NE Qr SE Qr

Later set long stone
& per tile

— Start stone as above
Meas. Southward (S-O-W)
at 20.20 found stone
at SW \angle Plum's 20a tract.
no wire.

Commence at this stone.
continue S. -
at 10.08 set stone
line Kauffman \angle Plum W.

at 20.16 in line with
wire fence to W. at S.
line of Sec.

Set stone & per tile - at
West edge of gravel in roadbed
being SW \angle Sec 20.

Meas. south through center of
SE Qr.

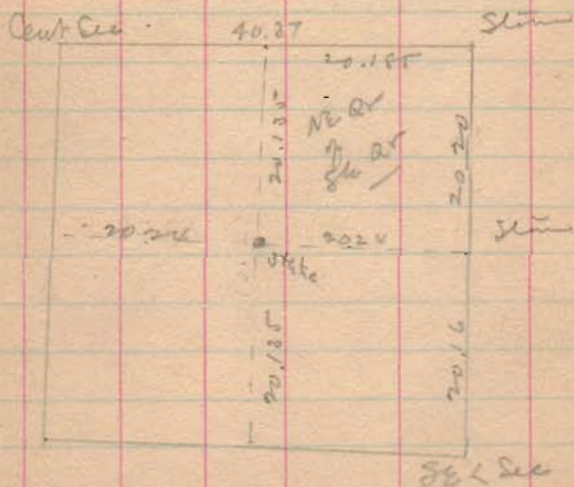
2000 - stake for dist

30.18 stone set

40.27 - S. line Sec.

$$\begin{array}{r} 2 \overline{) 40.27} \\ \underline{20.13} \\ 20.135 \end{array}$$

Set stake for dist



Start at stone, E. line
Sec. - at 20.16 W. of
SE 1/4 Sec.

Meas westward

at 40.98, W. line of Sec.

$$\begin{array}{r} 2 \overline{) 40.98} \\ \underline{20.49} \end{array}$$

Set stake for dist 20.49

at intersection of meas.
on this page or opp.
page set stake for
SW 1/4 of NE 1/4 SE 1/4.