

Expenses } Apr 17  
1893

Car fare to Lewistown \$1.00  
 Sam Rubin 1.00  
 Board at Hotel — \$2.00  
 " Mrs Reams — 1.50  
 Supper at Urbana 25  
 5 days = first week \$4.75  
 Second trip May 8 \$1.00  
 Car fare 25  
 and Rest — .25  
 Board at Mrs Reams — 1.25  
 Wilson Hann 75  
 Morgan + Conzils 75  
 Geo. Williams 75  
 Jagers 25  
 Car fare 25  
 5.25  
 Total \$10.00

	May								
	8	9	10	11	12	13	22	23	
Helfers									
D. G. Devore	1	1	1	1	1	1	1	1	6
H. R. Moore	1	1	1	1	1	1	1	1	8
French Enosh	1	1	1	1	1	1	1	1	8
H. C. Moore	1	1	1	1	1	1	1	1	8
G. C. Conzils							1	1	2
Jackson Evans							1/2	1/2	1
H. R. Moore							1/2	1/2	1
Sam Moore							1	1	2
H. C. Moore							1	1/5	1 1/5

Wates and Plats  
 of Lands  
 and

Fractional Parts of Lands  
 on the County Line  
 Between  
 Logan and Champaign  
 April 1893

By H. C. Moore <sup>Sam</sup>  
 For

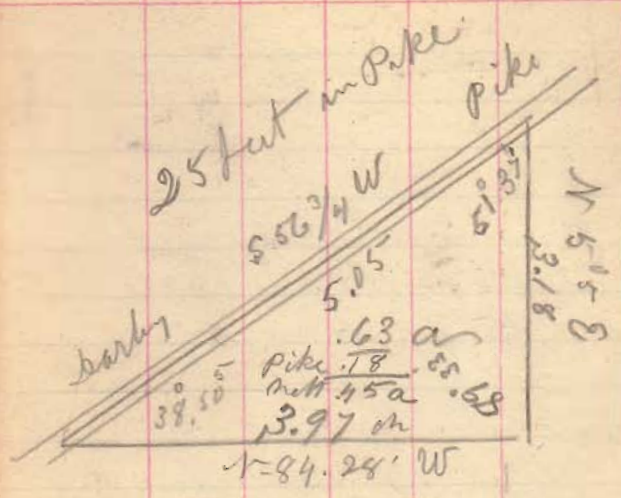
James C. Wanders  
 County Surveyor  
 of  
 Logan County  
 Ohio

	April					
	7	10	11	12	13	
Helfers						
Daniel C. Devore c.c.	1	1/2	1/2	1/2	1/2	2 1/2
Benny R. Moore c.c.	1	1/2	1/2	3/4	1/2	3 1/4
Wilbur Reams <sup>as man</sup> <sub>play man</sub>	1	1/2	1/2	3/4	1/2	3 1/4
Elwood Loudon				1/2		1/2
Put in with Reams						
H. C. Moore	1	1	1	1	1	5

Jim Repent to J. C. W.

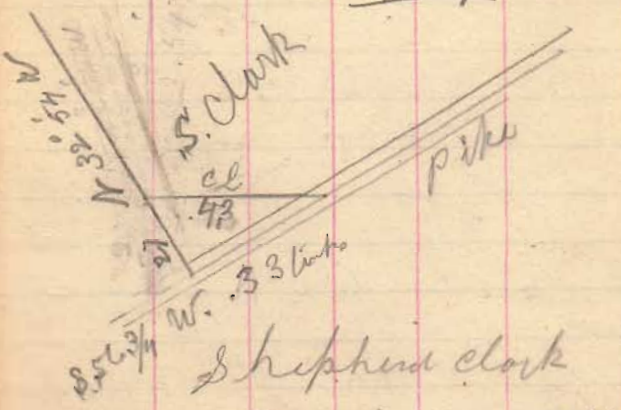
TABLE for reducing DEBITORS

4759



J. Leorhett. .63 a

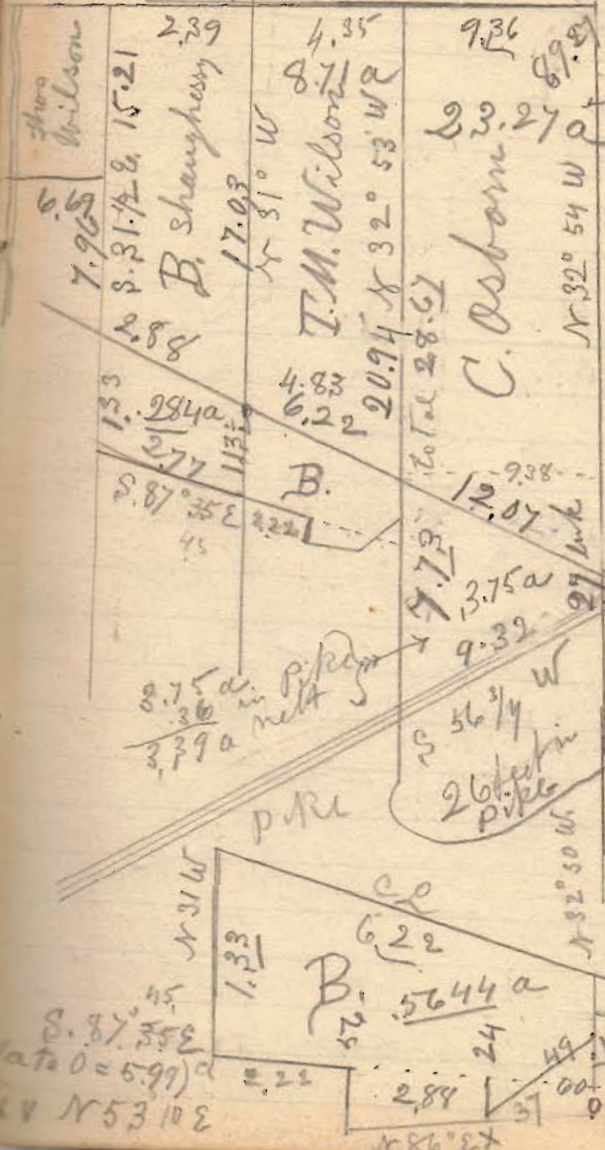
4759



Shepherd clock

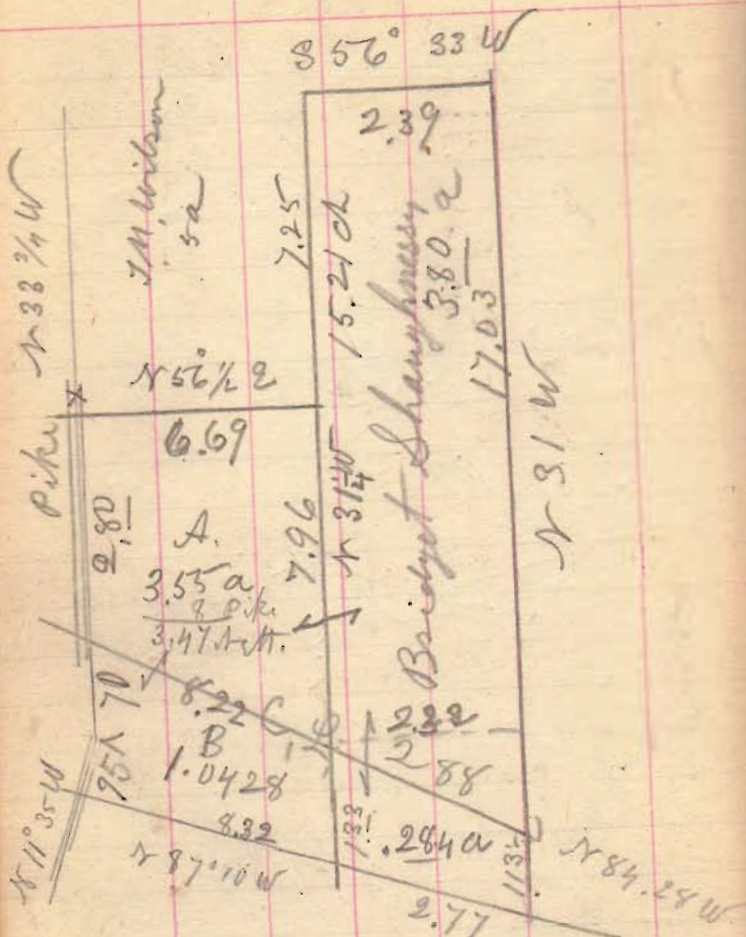
=  $33 \times 27 \div 2 = .0039 a$   
 and all in the  
 Pike

4759  
 S. 56° 33' W  
 x W 61  
 0.14 W  
 0.14 W  
 0.14 W





47.59

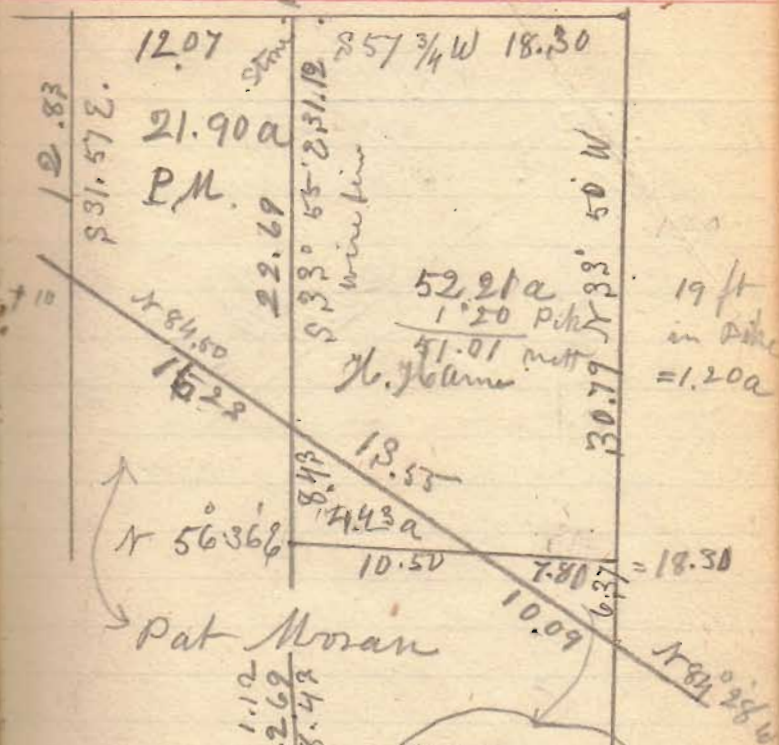


A. 3.55 in Pike  
 08 }  
 3.47 nett  
 } B. 1.0428 a  
 0495 in Pike  
 } 99.32 nett  
 }  
 } Brown fence west  
 } Board fence E

3.57  
 2.80  
 6.37

10.17

4658 18.31  
 10.56  
 4678 7.81



10.50  
 421 1/2  
 5.25  
 10.50  
 21.01

2.49 a  
 17 in Pike  
 2.31 nett  
 637  
 390  
 573.30  
 1711  
 2484.30  
 928.50  
 247.60  
 309.5  
 566.3850 a in H Ham  
 1331 chowh  
 4.4  
 522.084 Layan

4658  
4678

$r 57 \frac{3}{4} W$

16. ~~46~~ 46  
John R. Wilson

was  
waggy

20.10.99  
284.25 W

Isaac Waggy  
now

John R. Wilson

$16.46 - 1 = 16.45$   
6.56

12.83  
29  

---

1312  
6.56

9870  
8225  

---

4870  
1079120 acres

in Logan co

$35 + 1 = 36 \div 2 = 18 \times 29$

$\frac{29}{102}$   
 $\frac{36}{100}$   
 $1.00522 \quad a = \frac{11}{100}$

geese bowle

S 35 1/2 E

29

9.50

12.83

S 31 1/2 E

stone

2478

17.18

20.56

S 61 25 W

N 95 W

S 58 35 W

11.11 stone

25.67 d'

John R. Wilson

error's

S 57 3/4 W

47.20

760

9.50

57.40 W

16.46

J.R.W.

12.07

18.30

Lee Gomb

S 85 20 W

P. Moran

H. Ham

will not below 127 too much E

(See 4 leaves farther on) " E

from X S 35 25 E 15.46

then S 35 50 E 9.32

24.78 W

3.61 a Champaign Co  
in Logan Co.

S 56 W

11.11 stone

S 61 25 W

20.56

4658 9.50  
4678

26.33

9.30

16.83

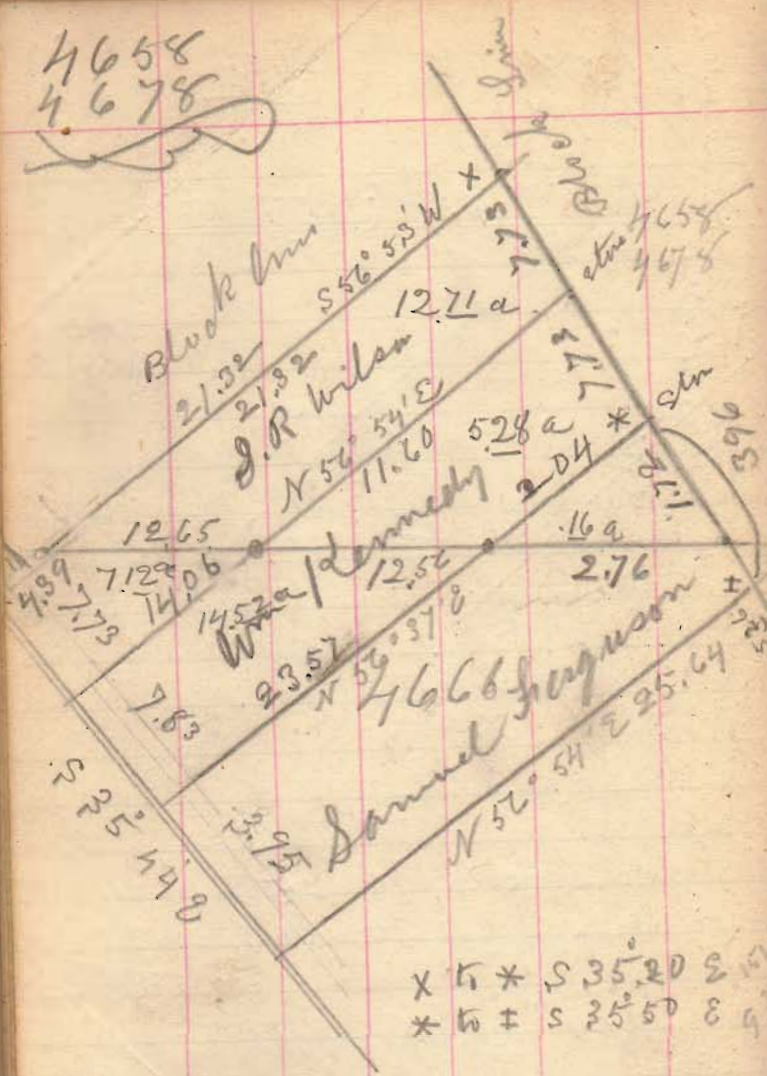
18 1/2 stone

25.33

N 34 10 W



4658  
4678



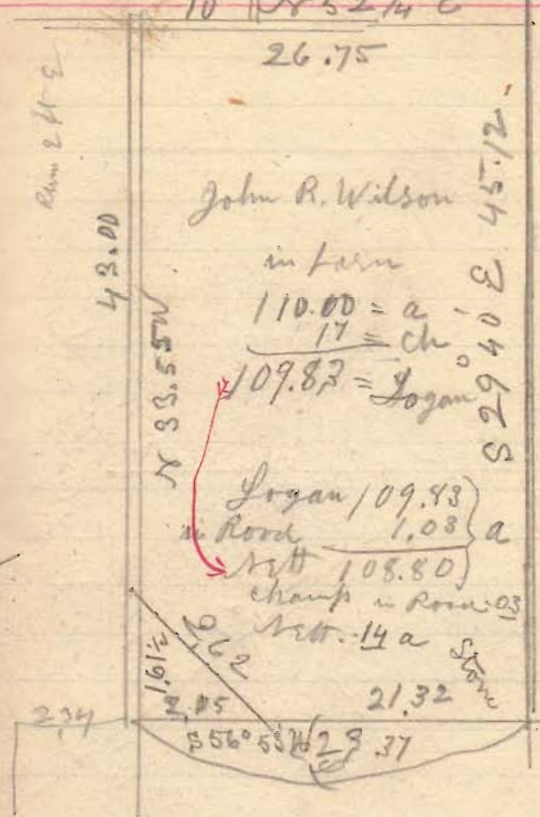
X 5 \* S 35° 20' E 15.76  
X 6 ± S 25° 50' E 9.22

Areas  
J.R. Wilson  
Wm Kennedy  
S. Ferguson

Logan Champ Idl  
12.71 + 7.12 = 19.83  
5.28 + 14.52 = 19.82  
.16 + 10.12 = 10.28  
395%  
295%

no  
4859  
N 52 1/4° E  
26.75

7 Acres from



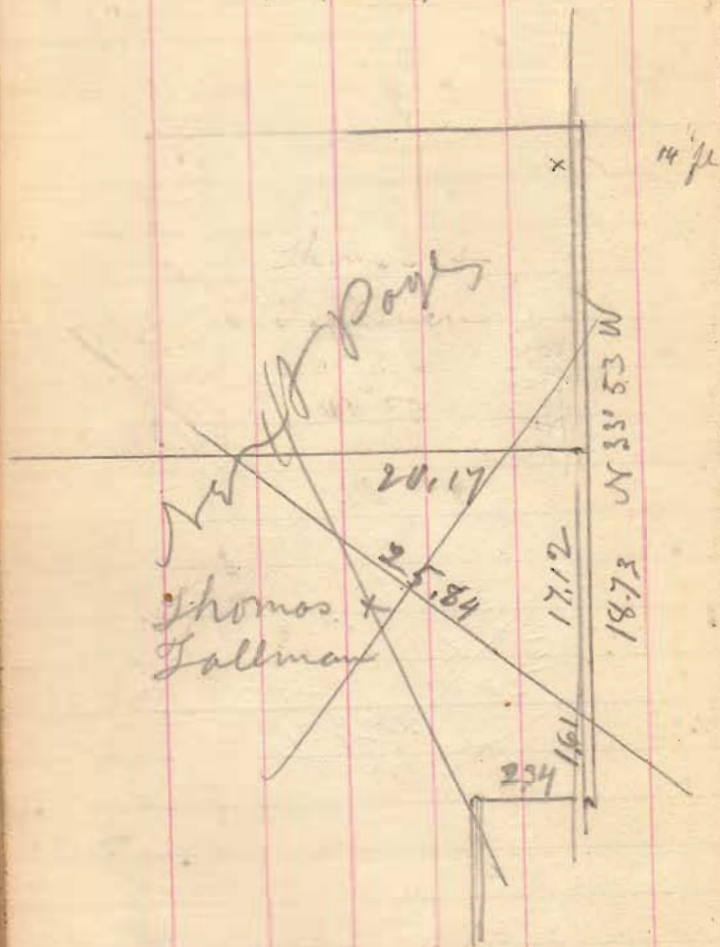
S 56° 53' W

Counted by  
Lat & Dept  
Total  
110.00  
17 ch co  
109.83 Logan co

2.05  
81  
2.05  
1640  
16605  
131 in Road  
136 met.

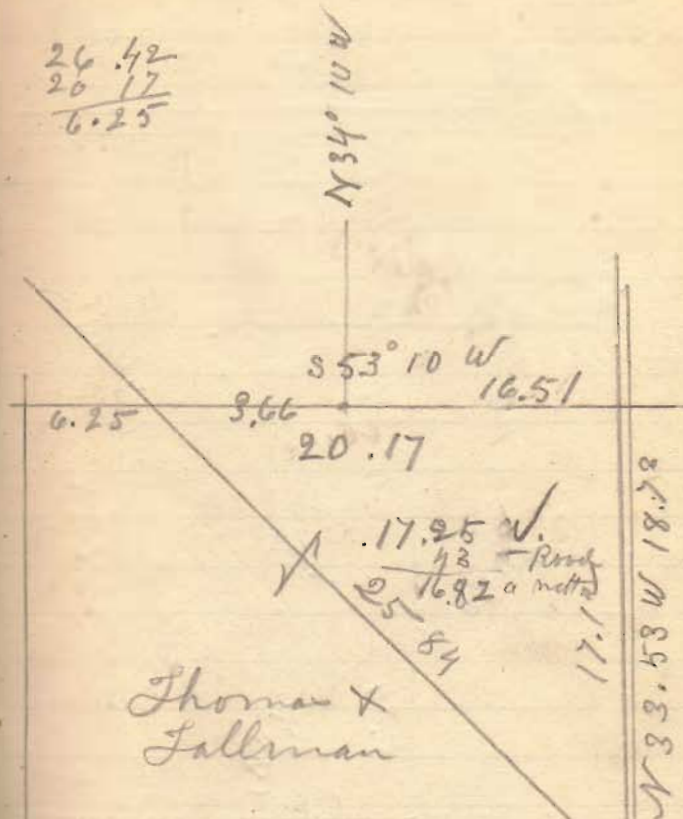
45.00  
Run 4.97 ch E of on  
115

4859



4859

$$\begin{array}{r} 26.42 \\ 20.17 \\ \hline 6.25 \end{array}$$



$$17.12 - 2 = 17.10$$

$$17.10 \div 2 = 8.55$$

$$\begin{array}{r} 20.17 \times 8.55 \\ \hline 8.55 \end{array}$$

$$10085$$

$$10085$$

$$16136$$

$$17.24525 = 17.25 a$$



25.78 Road + 30 to Sta

48.59.

N 54 1/2 E

Stone + Iron Bar

N 85° 20' W  
J.H. Kullbert  
25.02 ch

N 34° 20' W 19.68  
9.91

Mary P. Reams

24.76  
N 34° 10' W.  
Judgy

24.65 a  
1.67 a ch.  
22.98 a Logor  
23 Road  
22.75 a met.

5.34  
8.04  
Stone  
6.25  
9.91 ch  
S. 53° 10' W.  
9.91 ch  
Stone at old cor  
14 3/4 ft N. of Present L

2502  
2476  
4978  
24.89  
9.90 W  
1244  
22481  
401  
24082  
16675  
229149  
6.25  
2.67  
4.575  
3750  
1250  
186875  
O.K.

714  
14  
6.99

4697

528 3/8

J. W. Hain  
stone  
S. 55° 40' W.  
27.32

N 57° 51' E  
N.B. Johnson  
63  
H. 60  
24 1/2

J. H. Hurlbert

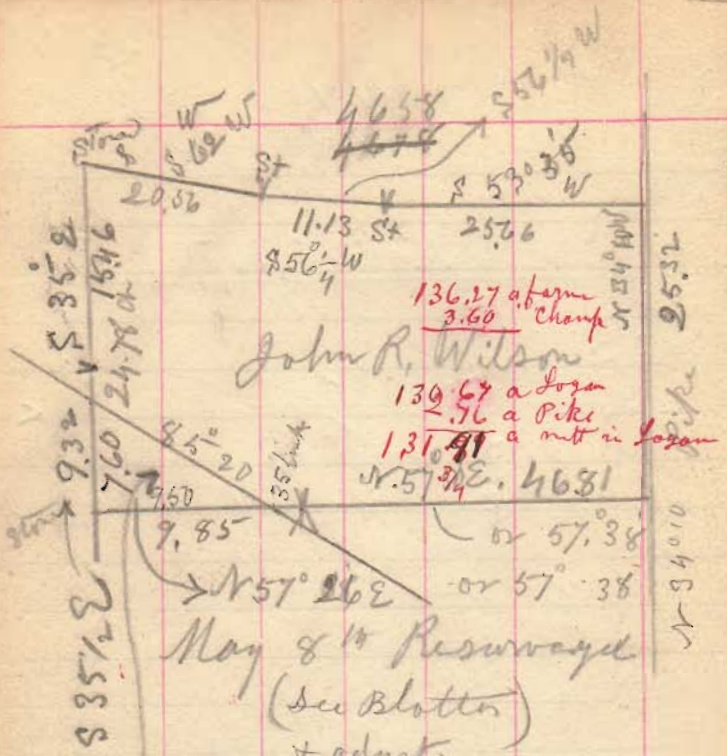
48.52 a Logor  
1.22 a Road  
47.31 a met.

4 85° 20' W  
H. 60  
24 1/2  
633° 1/2  
27.66 ch  
4 85° 20' W  
all in Road  
24 + 6.12 = 6.36

\* corner in ch = 1/5 of 100 a  
but not included in area.

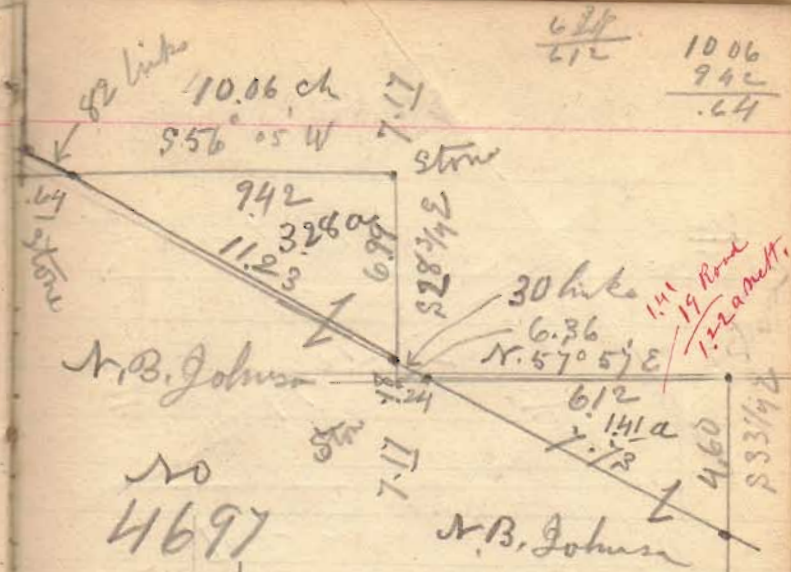
stone  
9.62  
N 33.15 W  
N 34° 20' W 25.02  
19.68  
5.34

a to N 3462 Run 15 ft W of Sta  
Passing cor at x

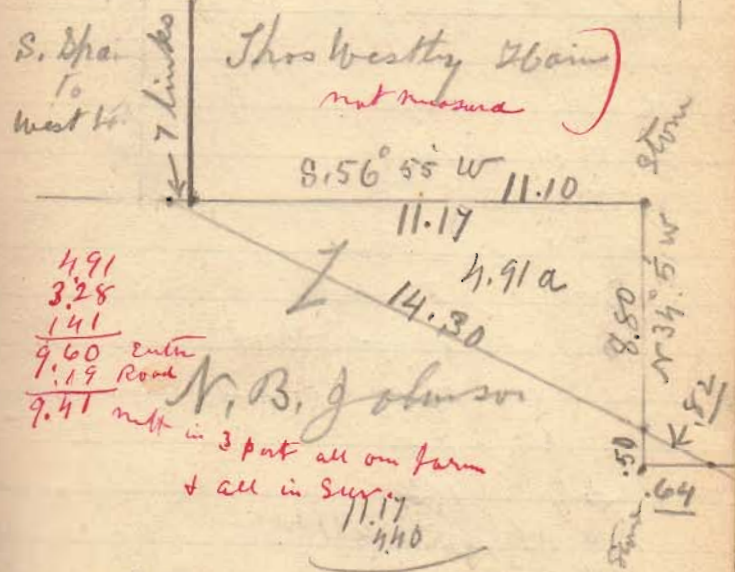


4658  
 136.27 a farm  
 3.60 Champ  
 John R. Wilson  
 139.67 a Lozan  
 2.76 a Pike  
 131.91 a mt in Lozan  
 N. 57 34 E. 4681  
 or 57.38  
 or 57.38

7.59  
 4.75  
 37.95  
 5  
 30  
 1.36  
 1.19  
 3.60 65.25 acres



6.12  
 212  
 10.06  
 9.42  
 .64



4.91  
 3.28  
 1.41  
 9.60  
 1.19 Road  
 9.41 mt in 3 part all on farm  
 + all in Survey  
 11.17  
 4.40

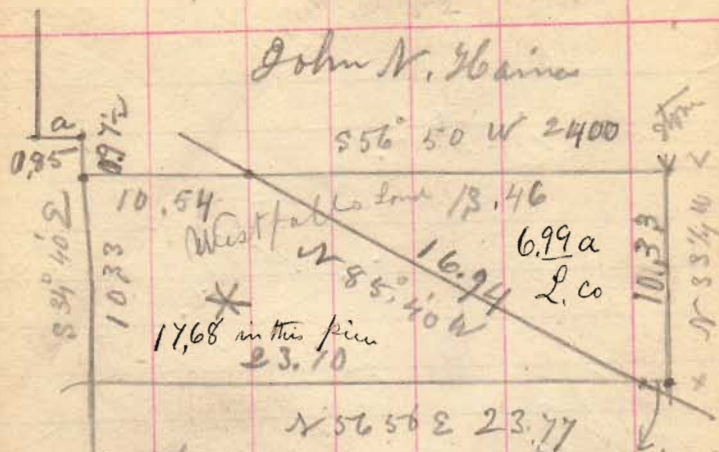
9.30  
 1.50  
 8.80  
 14680  
 4268  
 491480 a

6.12  
 230  
 18360  
 1224  
 140760



4697

John N. Gbaines



\* S share sold to  
Henry Westfall

at S 55 1/2 W 0.85  
at S 34° 40' E 0.97

Resurveyed  
John N. Gbaines

- 1 N 53° 33' E = 25.00
- 2 N 55 3/4 E 23.64
- 3 S 34 1/4 E 30.05
- 4 S 54 50 W 21.07
- 5 S 56 1/2 W 13.46
- 5 1/2 beam 10.53
- 6 N 34 40 W 10.33 links
- 7 S 53 3/4 W 8.5 links
- 8 N 33 3/4 W 7.85
- 9 N 33 5/6 W 21.19
- 10 S 85 3/4 E 14.43

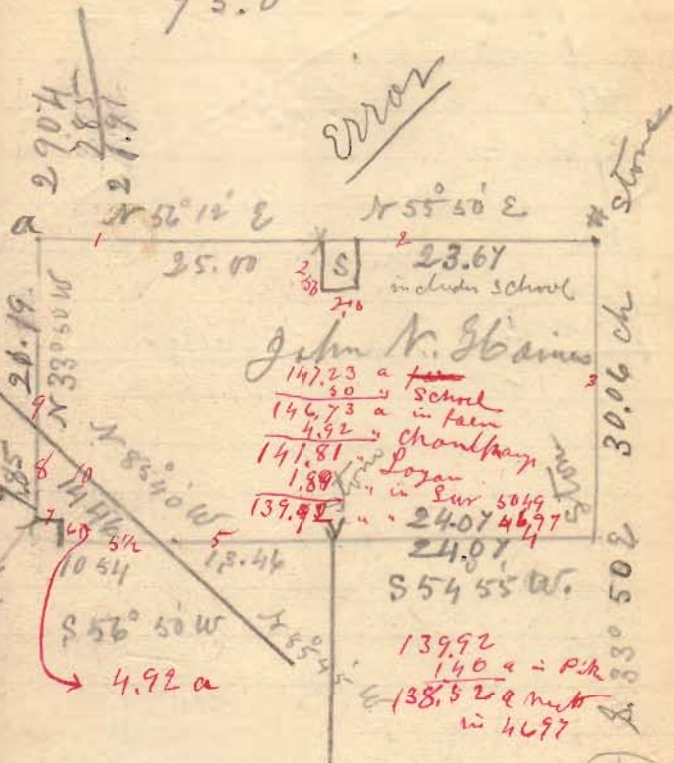
Run 3 1/2 ft R  
Run 2 links R,

23.94  
13.46  
10.48

4697

$$71.4 \div 4 = 17.85$$

$$\frac{23.6}{95.0}$$



John N. Gbaines

147.23 a  
50 a school  
146.73 a in town  
4.52 a Champlain  
141.81 a Logan  
1.89 a in  
139.92 a = 24.07 4697  
24.07  
S 54 55 W.

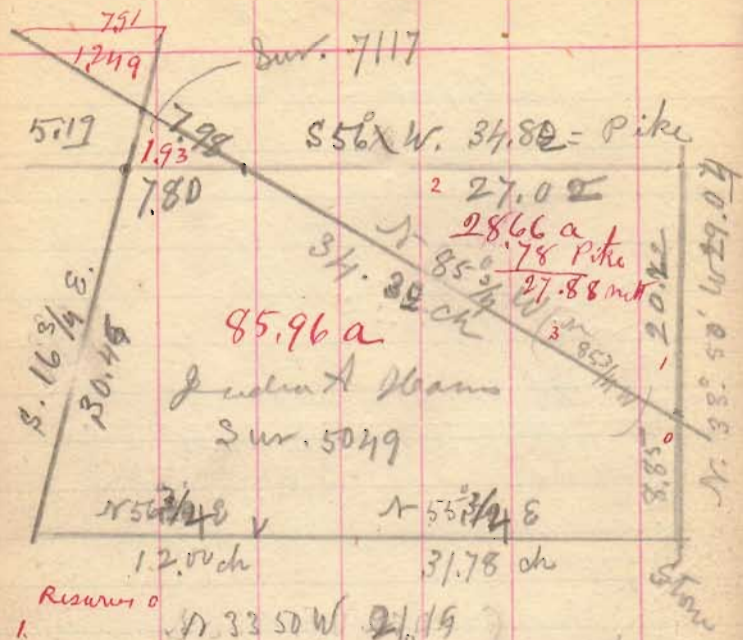
139.92  
140 a = P.M.  
= 138.52 a with  
in 4697

a = fence S. 21 feet

x = 32 links N. of fence post  
at W cor school lot

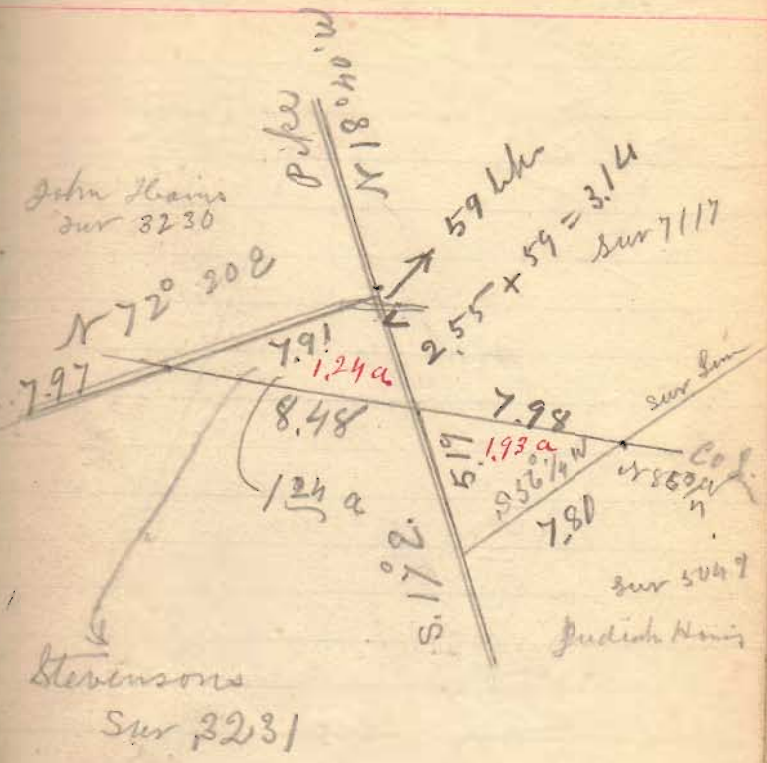
(S. Lot 2.50 x 2.00 = .50 ac  
# 23 ft w of fence =

at 22 ft



- Resurvey
1. N 33 50 W 21.19
  2. N 55 57 W 27.02
  3. N 85 3/4 W 34.32

Judith A. Hains Deed  
 Region at west cor Pelham Dec 5043  
 + D. cor to Dec 7117  
 Then N. 53° E 136 3/4 P. to stone  
 3 3/5 poles short of orig. N. cor  
 of Dec. Then S 38° E 113 1/2 P.  
 to stone at John W. Hains cor  
 Then S. 57° W, 171 3/4 P. to  
 stone in front center of Road  
 Then N. 21° W, 118 Poles to bridge  
 cor 108 3/4 acres

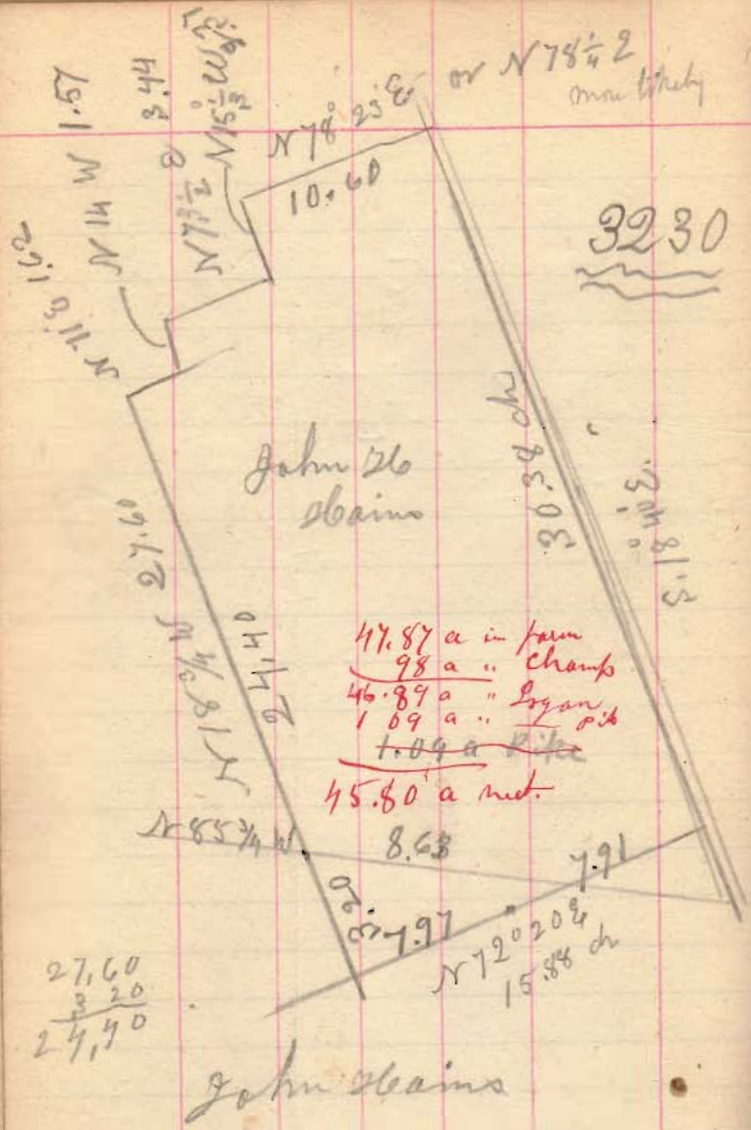


Stevenson  
 Sur 3231

By Lat + Dep.

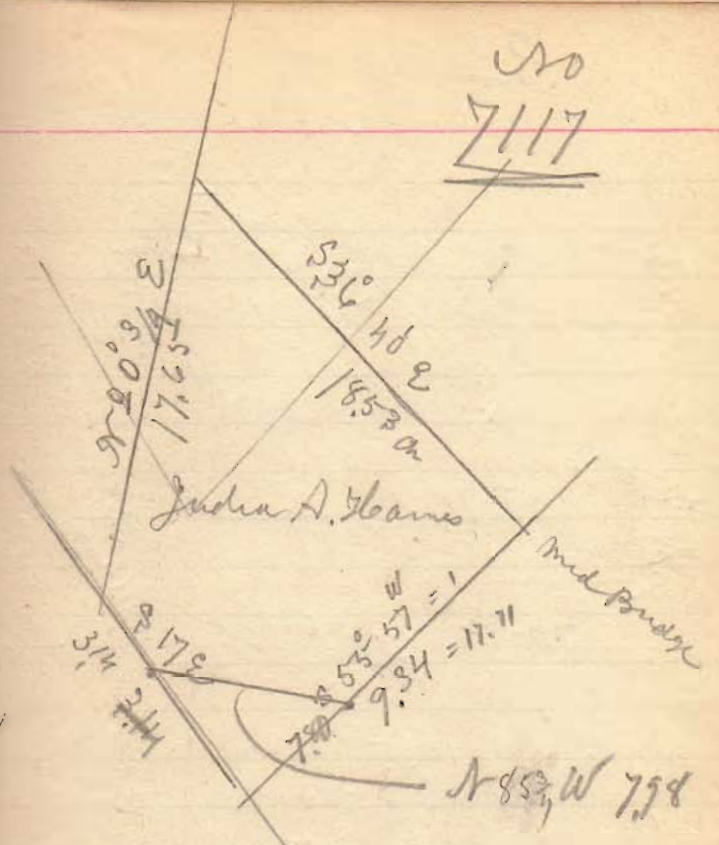
Judith A. Hains N line  
 Enoch L at Bridge at 17.71 ch  
 from Pike 24.50 ..





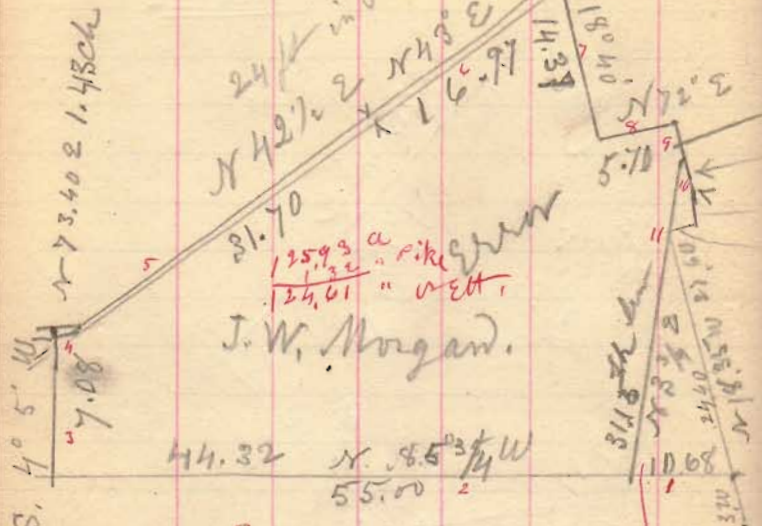
47.87 a in farm  
 98 a " Champ  
 46.89 a " Logan  
 1.09 a " ~~other~~  
 1.09 a ~~other~~  
 45.80 a net.

30  
7117



This Piece will  
 not balance

3230



24 in Pike  
N 42 1/2 E  
N 43 E  
16.97  
31.70  
125.93 a  
124.61 " a  
J. W. Morgan.

- Resurvey
- |    |                    |          |
|----|--------------------|----------|
| 1  | N 86° 8' W         | 10.65    |
| 2  | N 86° + N 86° 5' W | 44.32    |
| 3  | N 5° 20' E         | 7.08     |
| 4  | N 73 7/8 E         | 14.2 1/2 |
| 5  | N 42 35' E         | 31.70    |
| 6  | N 43 10' E         | 16.97    |
| 7  | N 18° 40' W        | 14.37    |
| 8  | N 72 1/2 E         | 5.70     |
| 9  | S. 16 1/2 E        | 3.75     |
| 10 | N 16 1/2 W scant   | 6.95     |
| 11 | N 3 3/4            |          |
| 12 |                    |          |

- 3.75 ch from the line to L
- S. 16° 37' E 10.71 = 69°
- N 14° W 1.57
- N 71° E 1.62

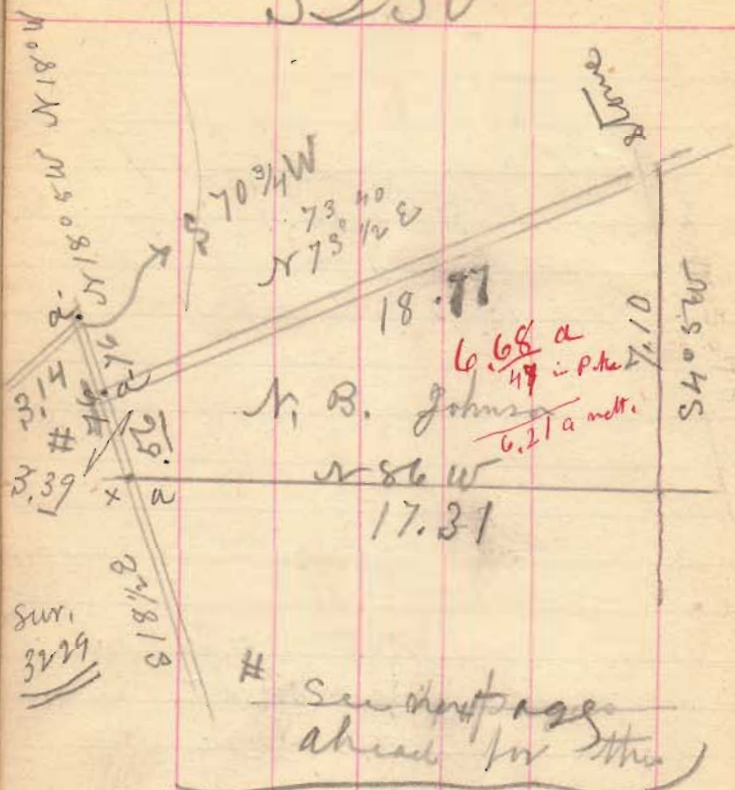
Township corner  
1/2 Round elm stake  
W. Ash 12 N 84° W 30 1/2 links  
Ash 14 N 30° E 35 "  
W Oak 14 S 81. E 28 "

Area 320 ch W of state  
no. 219.84.8

The line N. 3 1/4 E  
at 31.13 ch from W link E  
of the line stake in  
Morgan + William line  
3.76 ch S. of them N. cor



3230



6.68 a  
49 in pike  
6.21 a mlt.

x 25.8 in w of 262,52.1 cut Pike  
262.77.8

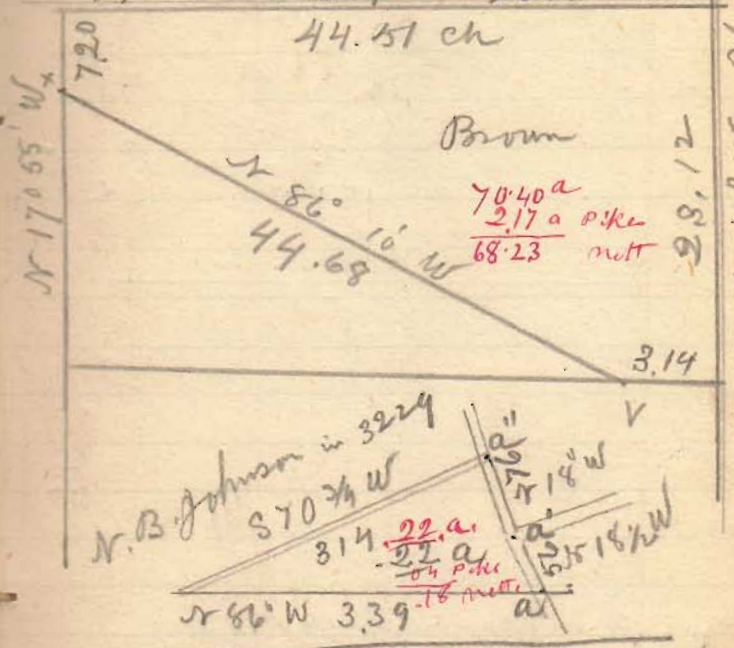
at a, a' & a'' each an iron barrow hole

Sum from Johnson to Brown  
265. + 2 = 265.02 ft

Miss a corr. 5 1/2 ft

E. Brown  
3229

M+ Lake Pike S. 72° 50' W  
S 72° 35' W 22.51. V 22.00



70.40 a  
2.17 a pike  
68.23 mlt.

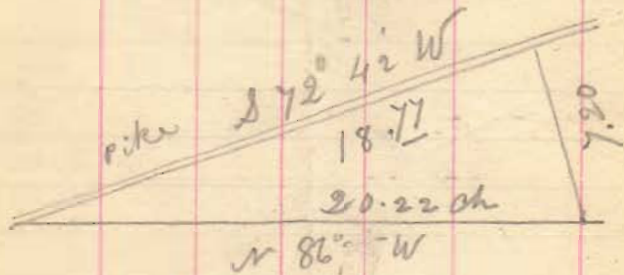
Sta. 265,00 + 2 = 265,02 ft  
x 6 short of N 294.68,3

E, Error 24 ft in Pike  
N Side 20 " " Pike

a, a' + a''  
each an iron barrow hole

3229

A. C. Williams

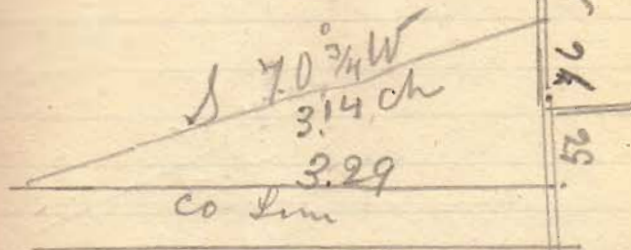


6.75 a  
 55 Pike  
 6.20 sett

9.17  
 55  
 2

Run from stem at Williams  
 S. 2. com through line  
 tree near Co line

3229



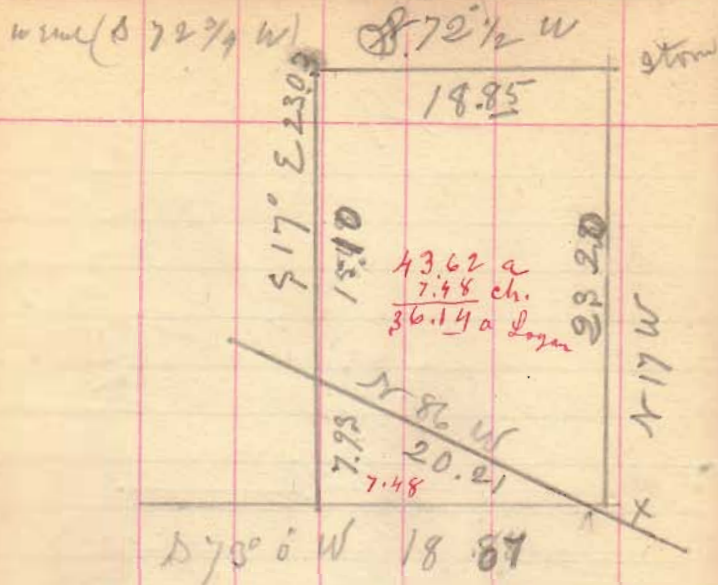
N. B. Johnson

See 2 Pages forward

22 a  
 4 a Pike  
 .18 sett

56  
 2  
 1/8  
 2





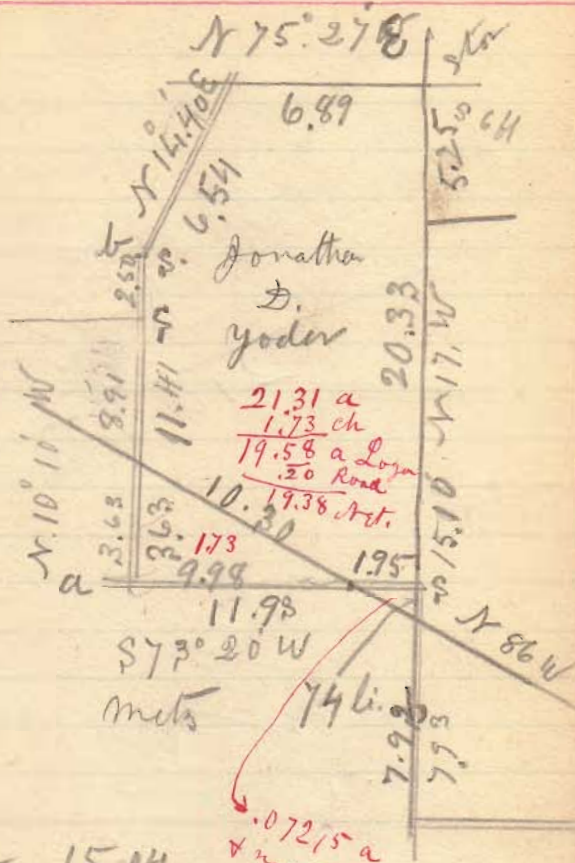
Yoder  
 43.62 a  
 7.48 a change  
 36.14 a Logan

x 1/4 of Co line  
 94 links from east side  
 to No 308, 637

29.33 to Pike

29.33	2
28.25	25
5.35	35
0.00	0

23.03  
 7.93  
 15.10

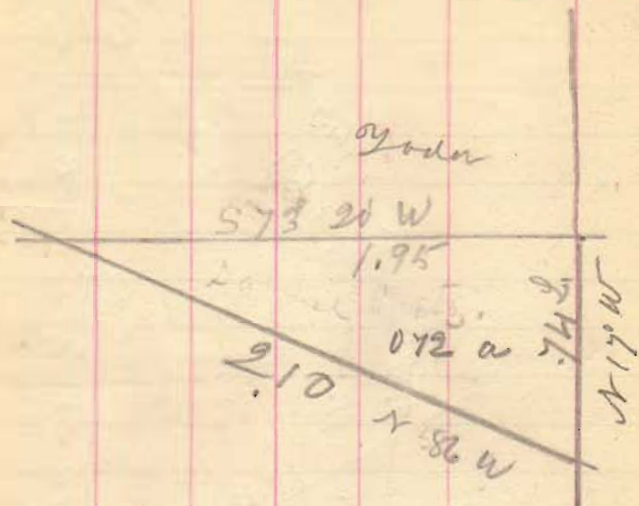


a to b 15.04

11.93  
 19.58  
 9.98

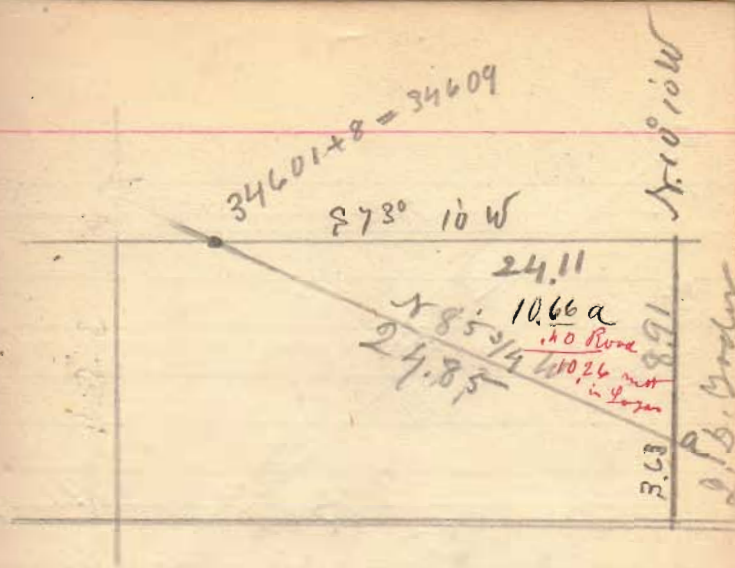
15.04  
 3.63  
 12.41

15.04  
 2.30  
 12.54  
 3.63  
 8.91



$$\begin{array}{r}
 195 \\
 37 \\
 \hline
 1365 \\
 585 \\
 \hline
 .07215 \text{ a}
 \end{array}$$

and nearly all in  
Pike  
which is on E. & N. Sides.



Jacob S. Hunt

$$\begin{array}{r}
 73 \\
 12 \\
 \hline
 85
 \end{array}$$

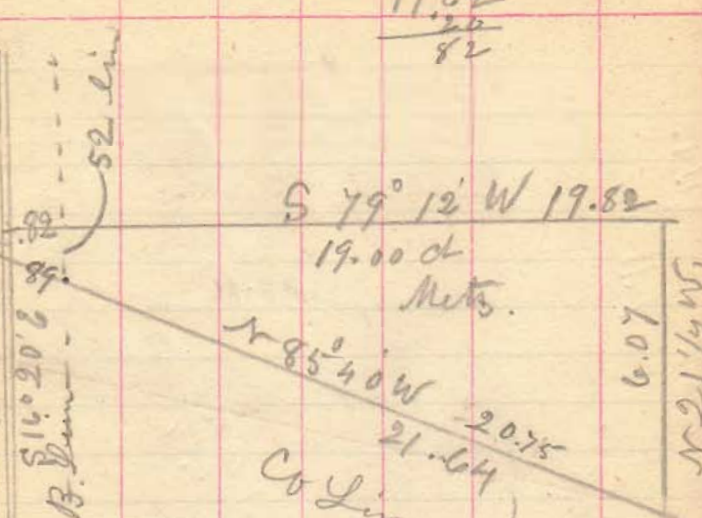
$$\begin{array}{r}
 2411 \times 884 \div 2 = \\
 4.92 \\
 \hline
 4822 \\
 9644 \\
 \hline
 9644 \\
 \hline
 1065662
 \end{array}$$





28 link

Road



$$\begin{array}{r} 19.62 \\ 20 \\ \hline 82 \end{array}$$

6.17 acs. in No. 5042  
 .03 1/4 " " " 5044

378.78.5

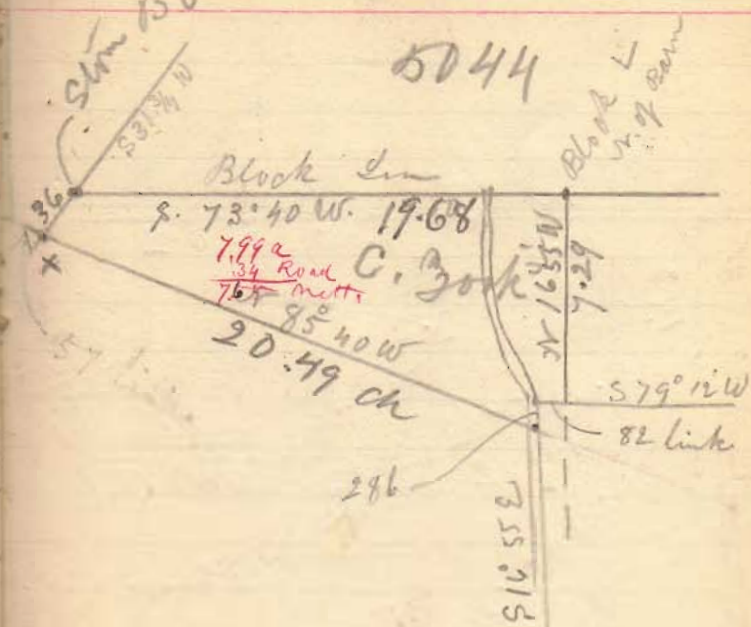
19.82

$$\begin{array}{r} 21.46 \\ 18 \\ \hline 21.64 \\ 82 \\ \hline 20.75 \end{array}$$

$$\begin{array}{r} 52 \\ 28 \\ \hline 80 \\ 40 \times 82 = 3280 \text{ a} \end{array}$$

S 30 36 A 33 W 49

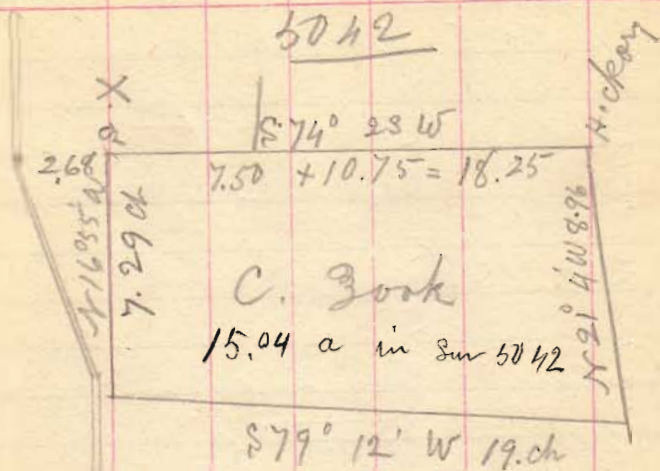
5044



$\times \text{No } 392.37 + 12 \text{ } \sqrt{\text{}} = 392.49$







Black line

8. 271

10.18  
2.68  

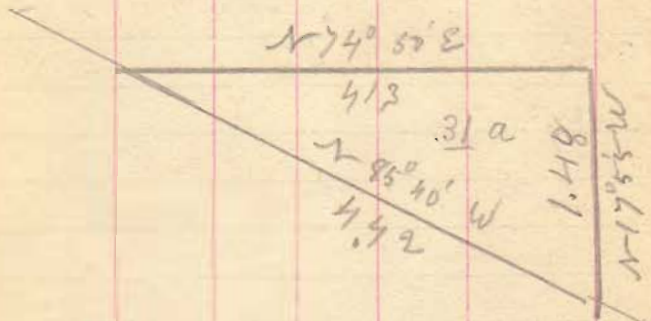
---

7.50

X Planted <sup>lime, 8m</sup> 2 ft 5x5 in  
marker + with 1/2 brick  
under it = Black cor



4492



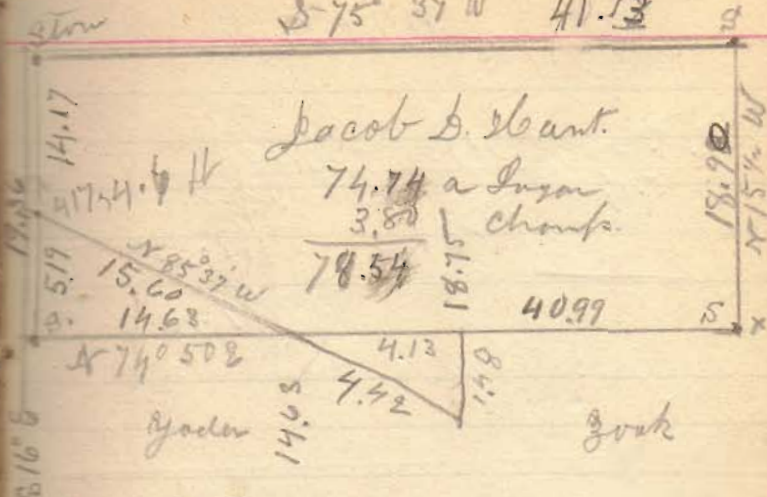
J. K. Godes

South of J. D. Hunt.

+ west of C. Book

$$\begin{array}{r} 413 \\ 74 \\ \hline 1652 \\ 2891 \\ \hline 30562 \end{array} a$$

S 75° 37' W 41.13



Jacob B. Hunt.

74.74 a Logon  
3.80 a Chomp.

78.54

40.99

N 74° 50' E

Godes

Book

Run 10 in N of cor

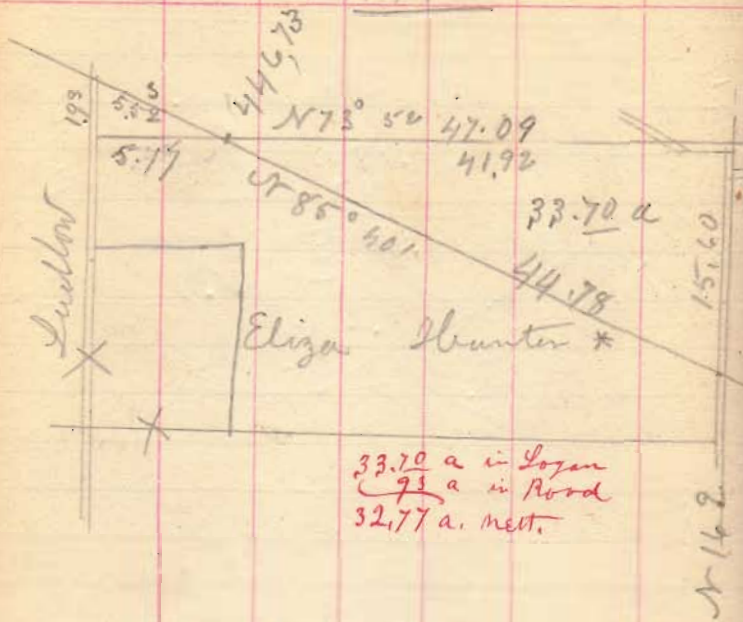
$$\begin{array}{r} 78.54 a \text{ in farm} \\ 3.80 a \text{ in chomp} \\ \hline 74.74 a \text{ in Logon} \\ 1.24 a = Road \\ \hline 73.50 a \text{ nett.} \end{array}$$

$$\begin{array}{r} N 15^{\circ} 53' W \\ \hline 15.20 \end{array}$$

$$\begin{array}{r} 19.36 \\ 14.17 \\ \hline 5.19 \end{array}$$

Godes to him Timber 1109  
N 75° 7' E

1492



33.70 a in Logan  
 73 a in Road  
 32.77 a. nett.

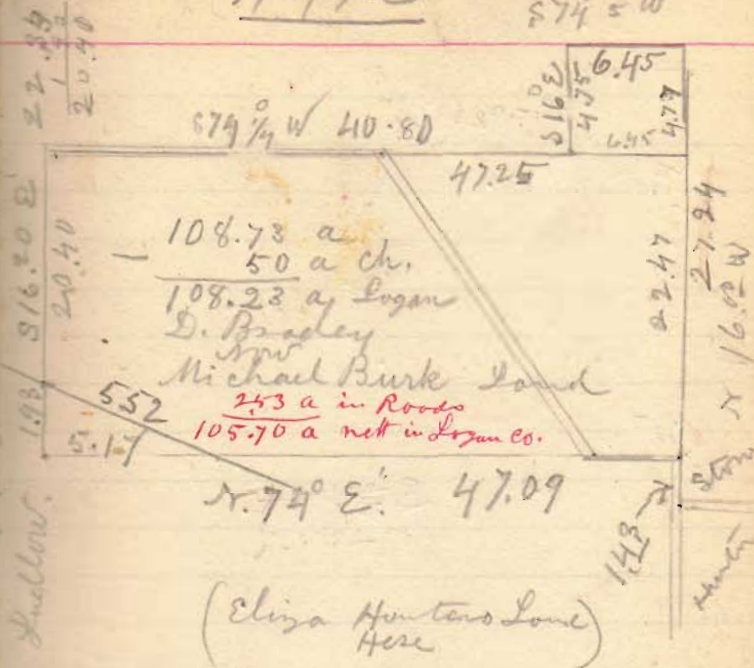
\* Down in Estate of  
 Henry Enoch  
 + part in fee simple

41.92  
 7.80  
 335.260  
 293.44  
 32.69760 = 82.70 a

15.60  
 5  
 20.60  
 45  
 103.00  
 82.70  
 9.27

14.9  
 14.17  
 15.60  
 22  
 16.9  
 1.9

1492



(Eliza Hunters Land)  
 Here

Logan Co 108.23 a  
 Ch 50 a  
 Total 198.73 a in form  
 on Sudlow Run

S. 16.20 E. + Run 12' 11" E of  
 Ston at Piatts corner 4.49  
 Baywood and on 4.51 chains  
 Stake at 12.23

Stake at 20.40 (Center Plug)  
 L at 22.38 } Wire fence  
 1.93 } 17 feet East of  
 20.40 }  
 47.20  
 8.25  
 97.52



~~E of Falls Stn 12' 4"~~  
~~S. 16° 20'~~  
~~in line shot 9 ft~~  
~~W~~  
~~S~~ 7' 4"