

TABLE for reducing PERCHES to FEET.

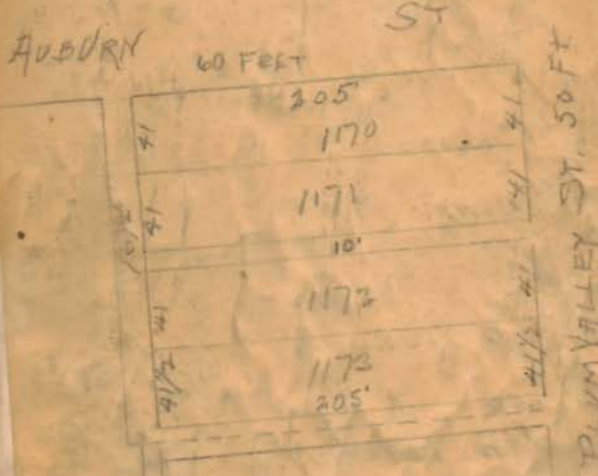
Per	Feet	Per	Feet	Per	Feet	Per	Feet
1	16.5	21	3,46.5	41	6,76.5	61	10,06.5
2	33.0	22	3,63.0	42	6,93.0	62	10,23.0
3	49.5	23	3,79.5	43	7,09.5	63	10,39.5
4	66.0	24	3,96.0	44	7,26.0	64	10,56.0
5	82.5	25	4,12.5	45	7,42.5	65	10,72.5
6	99.0	26	4,29.0	46	7,59.0	66	10,89.0
7	115.5	27	4,45.5	47	7,75.5	67	11,05.5
8	132.0	28	4,62.0	48	7,92.0	68	11,22.0
9	148.5	29	4,78.5	49	8,08.5	69	11,38.5
10	165.0	30	4,95.0	50	8,25.0	70	11,55.0
11	181.5	31	5,11.5	51	8,41.5	71	11,71.5
12	198.0	32	5,28.0	52	8,58.0	72	11,88.0
13	214.5	33	5,44.5	53	8,74.5	73	12,04.5
14	231.0	34	5,61.0	54	8,91.0	74	12,21.0
15	247.5	35	5,77.5	55	9,07.5	75	12,37.5
16	264.0	36	5,94.0	56	9,24.0	76	12,54.0
17	280.5	37	6,10.5	57	9,40.5	77	12,70.5
18	297.0	38	6,27.0	58	9,57.0	78	12,87.0
19	313.5	39	6,43.5	59	9,73.5	79	13,03.5
20	330.0	40	6,60.0	60	9,90.0	80	13,20.0
						100	16,50.0

Entered according to Act of Congress, in the year 1866, by James W. Queen & Co.,
in the Clerk's Office of the District Court of the United States, for the Eastern
District of Pennsylvania.

TABLE of Decimal Parts of a FOOT for
each Inch and Sixteenth of an Inch.

In	0	1	2	3	4	5	6	7	8	9	10	11
0	0000	0033	1672	5033	4175	5000	5833	6677	7500	8333	9177	
1	0050	0839	1722	2555	3339	4222	5055	5839	6722	7555	8339	9222
2	0100	0944	1772	2600	3444	4277	5105	5944	6777	7600	8444	9277
3	0150	1089	1822	2666	3499	4322	5165	5999	6822	7666	8499	9322
4	0200	1244	1877	2733	3544	4377	5210	6044	6877	7710	8544	9377
5	0250	1399	1933	2777	3555	4433	5266	6099	6933	7766	8599	9433
6	0300	1555	1988	2833	3655	4488	5316	6155	6988	7816	8655	9488
7	0350	1711	2033	2866	3700	4533	5366	6200	7033	7866	8700	9533
8	0400	1866	2088	2922	3755	4588	5422	6255	7088	7922	8755	9588
9	0450	2022	2144	2977	3800	4644	5477	6300	7144	7977	8800	9644
10	0500	2177	2193	3022	3855	4699	5522	6355	7193	8022	8855	9699
11	0550	2333	2244	3077	3911	4744	5577	6411	7244	8077	8911	9744
12	0600	2488	2299	3122	3966	4799	5622	6466	7299	8122	8966	9799
13	0650	2644	2333	3183	4011	4844	5666	6511	7344	8183	9011	9844
14	0700	2800	2388	3233	4066	4900	5733	6566	7400	8233	9066	9900
15	0750	2955	2444	3288	4111	4955	5788	6611	7455	8288	9111	9955

Entered according to Act of Congress, in the year 1866, by James W. Queen & Co.,
in the Clerk's Office of the District Court of the United States, for the Eastern
District of Pennsylvania.



Per	Foot	Per	Foot	Per	Foot	Per	Foot	
1	10.5	21	3.465	41	0.765	61	10.065	
							81	13.365

each Inch and Sixteenth of an Inch.

✓ Howenstine Survey Liberty T^s.

Bridge & Wylie "

McKinney - Montgomery

Rockwell - King.

✓ Horn Survey

Nichols lot

Geo. Green

Mr. Wilson

Philip Leamer.

Gribble survey.

Mr. Wilson grading.

County road Reservoir

Newell - Hartzler.

Austin - Rush creek T^s.

Hamilton Bro. N. of Cemetery.

Plummer - Shipley survey

Lewis Yeck Flagman

Wm. Yeck Ch. Cr.

A.R. Richey Ch. Cr.

29-5-13

✓ Howenstine Survey Liberty T^s.

Bridge & Wylie "

McKinney - Montgomery

Rockwell - King

Horn

Nichols lot

✓ George Green 4576 mound sp.

✓ Dr. Wilson 34-4-14 Lake

Philip Leamer

Gribble Survey

Dr. Wilson grading

County road Reservoir

Newell - Hartzler

✓ Austin Rush creek T^s 3321

Howenstine's Survey

Line A

A + N. E L 82 Acres

Front Stake 2" dia.

Road has been graded.

20.57 Set stake @ pine and road.

Set Stone at $48\frac{1}{2}$ ch S. $25\frac{1}{2}$ E

On N. Line N 84 W. Variation 4°

20.55 ch Set stake @ road @ pine.

Line B.

on W Line S 4 W

Set up pole S' E @ pine at S.W. L 30 A.

Set stake at 12 ch. 9 ch 13 ch.

Set stake at 12.17 ch for S.W. L 25 Acres

March 17, 1904 C.M.R.

Sec 29 T 5 R. 13. Liberty TP.

Line C S. $4\frac{1}{2}$ W.

See book for place Oak at 11.47 1/2

but failed. Set stake at 12 ch. in line posts of fence.

Set permanent stake at 12.17

Wit: 8" Hickory $\begin{matrix} S & W \\ N & E \end{matrix}$ 57 lbs

" " E. 13 lbs

Line D N. $51\frac{1}{2}$ W

20.52 ch N. 34 W

Set stake at 12.17 ch from N.W. L

Wit: 12" Black Oak $\begin{matrix} 104 & ch \\ 96 & lbs \end{matrix}$ N. 27 E

12" Black Oak 78 lbs. N. $54\frac{1}{2}$ E

$\frac{104}{21.50}$

41.07

20.54) 25.00

20.54

4.460

21.08

3520

20.54

14.640

12.17

Bridge & Taylor Survey

Ed. Bridge }
Robt. Taylor } ch. en.

Start from + pithead Ry.
measured north on pipe at
24.36 from of fence old line
calling for 97 rods (24.25)
made no mark at this place

at 38.42% center of bridge over
Meadow Run.

	97.
	56.3
	4) 53.3
	38.32%
38.42%	
24.56	
14.06%	

at 38.37 center old bridge.

	38.37	38.37
	14.07%	38.32%
	24.29%	4%
4) 56.30		
14.07%		

March 18 - 1904

	51
	97
	4) 178
	44.50

Set stake on pipe at 44.50

	178.	49.57
	19.8	44.48
	4) 197.8	.12
	49.45	

at 49.57 in line with
Taylor's fence (old rail)
dig for stake 25' from center
of pipe - but found nothing

	12	44.50	49.48
	4 1/2	38.37	44.50
	7 1/2	6.13	4.98

Make line between Bridge and
 Nylis in center of footer at
 44.58 1/2 from + to Ry.
 and set Nylis A. line
 at 49.57

then divide the section
 north of center of old
 bridge to Nylis A. line

bearing of footer S 27 1/2 E

set stakes Nylis A. line
 Stone - Nylis & Bridge

38.32 1/2 old meas. to bridge

38.37 new " " "

4 1/2

\$1.

56.3

4 | 24.7

6.17 1/2

38.37

44.54 1/2

4

44.58 1/2

49.57

44.58 1/2

4.98 1/2

4.95

3 1/2

49.57

38.37

11.20

11.12 1/2

7 1/2

24.7

19.8

4 | 44.5

11.12 1/2

4 | 19.8

4.95

4/17.1
4.28
33.33
37.53

Line B on Ry.
29 1/4 E

at 39.25 set spike in Ry to
measured to Elm stump 150' all
in 160

at 37.57 from over iron pipe about
supposed to be identical with old record
(Should be 37.53)

133
61
4) 94
28.50

at 48.50 -
Set stake in center Ry.
with: Water Elm 15" 586 1/2 ft 94' also

4/1.02
38.50

Line C
On N. line bridge - from stake
in Ry - S 82 1/2 W

Set south 12'
101
4) 53
13.25

Set stake for dist at 13.25
Set " " line " "
" " " " " " 150
" " " " " " 26.18

at 38.60 1/2 came out 16 1/2 south
of old & stakes - (Set stake)
with: Water 20" N 11 1/2 W 2.67' also
Total southing 4 1/2'

$$\frac{13.25}{38.60} \times \frac{9}{2} = 1.6 \text{ set north } 13.6$$

$$\frac{18}{38.6} \times \frac{9}{2} = 2.1 \text{ set north } 14.1$$

$$\frac{26.18}{38.6} \times \frac{9}{2} = 3. \text{ set north } 15'$$

(over)

Line (Continued)
at S&L Mylers Bridges
N. line

35.60 1/2
13.25
25.35 1/2

Surplus whole line 10% allowed

13.25
35.60 x 10%

Make Mylers south line

25.25 + 7 = 25.32

set stake at 13.28 1/2 and 13.6'
north of line to run

Hit Elm snag 20' S 71 W 7 fms

Line 2.

Mylers west line

N 71 W

set stake on S bank of stream

Red slough at - 8.40

Hit Sun oak 24" S 7 E - 54 fms

and also on N. bank

Line E

from stone in furrow & Naper
land bridge

N 82 1/2 E

at 11.40 set stake on bank

M. R. S.

set stone at 11.20

dist to stone across 10" N 62 1/2 W 110 1/2 lbs

McKinnon - Montgomery

Survey of 10 acres off of the
S. 106 acres of the Horace Brooks
farm -

Frank Harris } ch. cr
Morton Rothard }

Measured on center C. S. & C. Ry.
from center road S. line 100 a.
at 42.20 ch (128.8 pole) set
stake in center of Ry.

On north line McKinnon from
stake in Ry. to fence
at east side Cherokee Creek.
set north 12' -
N 83 1/2 E

Survey 9904 March 31-1904

Line "A" with line 50' from center
of Ry. S 91 4.00 ch set stake.

Line B. same as A
S 6 1/2 W . 3.00 ch set stake.

Line "C" with Ry same as "A"
S 3 1/2 W ^{4.14} 4.00 ch

Line "D" (trial south line)
from end line "C"
S 83 1/2 W $\frac{8.09}{9.00}$ ch

Line "E" (trial line from end D)
N 6 1/2 W $\frac{10.90}{10.76}$ set stake in
north line 1000000

On N. line 100 0000
Line "F"
N 83 1/2 E $\frac{10.56}{11.46}$ to
stake begin line "G"

Moved east from end of
south line "D" 90 lbs.
making S. line 8.10
set south (S 6 1/2 E) 14 lbs making
and line 10.90
set stones with broken bottles
wit blk. Mal. 24" N 10 1/2 W 62 lbs

Thence N 63 1/2 E 8.09 to point 50'
from center Ry and 14 lbs
south of stake set for end of line
"E" making 6. 4.14
set limestone with broken bottles.

On north line from begin line "F"
move east 90 lbs, making north line
10.56 set stones.

Wit N.O. 6" S 21 1/4 E 79 lbs
Ash 6" S 5 1/4 E 104 lbs

Cockrell. King Survey

March - 5 - 1904

Jacob Liddy } ch as
Chas. Harkbarger }

Start at stake found in road
side W. L. & D. J. J. - NW
Howell.

Line A -

160 ft

160 ft stone in road side of J. J.
& Liddy - & Harkbarger

at 20 17/2 to stake out today
at NW Cockrell.

" 40 55 to stake sec
NW L. W. Dille -

Went to stake SW King and NW
Howell.

Chain 12" 526 3 46 lks

Line "B"

On N. line Cockrell's southeast
5856 (Min. fence line)

at 4288. set stake with fence
for NW Cockrell.

Came out 4 1/2 miles

Line 6

on east line

set east 8' from stake

at southeast < set stone

156 ft to the fence remains of
tick stump

55 1/2 ft

set stake at 10.00 for dirt
and another for line 8 west

2020 ch.

Mt. to stone Hal (100 ft) 0'

353 1/2 ft 10 lbs

Line 9

at north 5'

with south line fence

~~11 54 1/2 ft~~ 11 55 ft

at 41.22 chain to stake at fence
came out 11 too far north
total working 6

40.58

41.22

82.10

41.05

30.17

269.45

41.05

82.100

82.87995

52.88

37

580.16

248.64

87) 5066.56 | 35.25

261

456

430

215

174

4.16

20.15

20.15

20.19

52.88

50

87) 4144.00 | 47.63

348

35.25

664

82.88

609

550

522

280

41.22
40.88

34
87
238

102
87) 1258 14
87
388

41.06
40.88

.20

41.08
10

40.98

2079
857

11.62
40.98

9296
10458

46480

47.618 76

41.22
74
41.08

41.22
7

41.10 / 352508.5
32920

53300
20575
27250

Matthie E. Thing 35.25
Frank Cochrill 47.63

East and west ends of
King's Bend (105, 150, 200)
8.5 / ch.

Line E

division line Cochrill & Thing

~~30° 45'~~ at stake at 100 - 200
30° - 88.5°

at 4108 same side 10 the west
of corner stone set the day for
east end of line between Cochrill
and Thing

Mk: White oak 3" 20 lbs - 1/2 1/2

More stake at 30. south 7 1/2 lbs

" " " 20 " 5 "
" " " 10 " 2 1/2 "

Horn Survey Apr. 7, 1904.
Ch. en. Vance Horn.

Horn Survey

Line A

Found a stone at Geo. Horns

N.W. corner

Measured his W. line.

No stone at his S.W. corner.

Set a stone - very large - in line of
fences at 3.25 ch. from N.W. Corner

S. 2 W.

Witness to large stone:

2 1/2" plum tree N. 7 1/2 E. 11 links

2 1/2" " " N. 10 E. 28 links.

Line B.

S. Line of tract.

Set stone in S. line by fence

at 8.08 ch

N. 87 3/4 W.

Witness;

6" Wild Cherry N. 29 E. 5 links

8" Burr Oak S. 64 1/4 E. 22 links

Apr. 7, 1904.

Line C. on W. N. 15° W.

Found stone (old) at S.E. of Shier Tract

Run W. line from stone to a stone

at intersection Ludlow line and

E. Ry fence.

3.26 ch. Set stone Witness: 4" Hick

N. 6 3/4 W. 40 links, 4" Walnut S. 20 1/2 E. 31 links

Line D. N. Line.

N. 87 3/4 W.

9.03 ch.

9.03

8.08

2 (17.11)

8.55

3.05

42.75

1565

260775 Acres.

2.60 Acres

Nichols Lot, April 11 - 1901

Front Lots 40 - 40 - 40 - 44.25

On West line bar is -
19.5' dist from face of curb -
set bar at 242

On 40' line 18.7

16.5

7.9

148.5

115.5

1303.5

16.5

10.6

99.0

165.0

1749.0

16.5

4.4

66.0

66.0

72.60

16.5

15.4

66.0

82.5

16.5

254.10

On 80' line - bar is 18.1'

dist from face of curb.

on 125' line

17.6

On 80' line set bar at 242'
from curb. It, fence line at
259.

East line set is 17' from face curb

on It, line - 40 - 40 - 40 - 11 1/2
to Ludlow.

Street records -

Park to Power 543'

Power St. 20' wide.

April 14 - 1924

Line on Ludlow

4.9

$$\begin{array}{r} 16.5 \\ 4.9 \\ \hline 14.85 \\ 6.60 \\ \hline 80.85 \end{array}$$

from pin S & C to this point

166.7

at this point the lot is 36' wide

$$\begin{array}{r} 166.7 \\ 17 \\ \hline 183.7 \\ 9 \\ \hline 174.7 \end{array}$$

On St. Louis S. Line Alley
40-40-40-111

On Ludlow's Alley extends 188'

West line West lot - $242 - 19.3 = 222.7$

East " " " $242 - 18.7 = 223.3$

" " 2d " $242 - 18.1 = 223.9$

" " 3d " $242 - 17.6 = 224.4$

$$\begin{array}{r} 80.85 \\ 15.1 \\ \hline 62 \end{array}$$

George Green Survey

In Survey 4570-

Monroe Township -

Geo. H. Green } Susan Johnson
Marion Green } ch. ex. Mrs.

Line on Co. road from Stone

5112 Bentley William 20 acre

Tract. A41E 7.25 with road
set stone in center of road.

Line "D"

A. Linn Green from stone at road
to stone 5000s A41E

561E 22.72 to stone

May 2 - 1904

Line "C"

533 1/2 ft. stone to stake

with sugar 26" A41E 27 1/2

526 1/2 ft

Line "D" set south 15'

A41E 1/2 ft. stone

at 25.03 ft stone begin

came out 30' south

total southing 15'

(V.K. Cor. A41E 1/2 ft)

Iron Survey

Line D

Start back set south 8'

~~360° to~~

at 8:00 set stake

" 14:00 " " "

" 16:00 " " "

" 20:00 " " " set south 8'

" 22:00 " " "

Came out 2 1/2' south total northing

16 - 2 1/2 = 13 1/2'

$$\frac{27}{2} \times \frac{8}{25} = \frac{108}{25} = 4 \frac{8}{25} - 8' = -3 \frac{17}{25}' \text{ set north}$$

$$\frac{27}{2} \times \frac{14}{25} = \frac{189}{25} = 7 \frac{14}{25} - 8' = -\frac{11}{25}' \text{ set north}$$

$$\frac{27}{2} \times \frac{16}{25} = \frac{216}{25} = 8 \frac{16}{25} - 8' = +\frac{16}{25}' \text{ set south}$$

$$\frac{27}{2} \times \frac{20}{25} = \frac{54}{5} = 10 \frac{4}{5} - 8' = +2 \frac{4}{5}' \text{ set south}$$

$$\frac{27}{2} \times \frac{11}{25} = \frac{297}{50} = 11 \frac{23}{50} - 16' = -4 \frac{7}{25}' \text{ set north}$$

Dr. Wilson lots Plum Valley Auburn May 5 - 1904

Survey to ascertain ally line
and street line for building
concrete culvert on Possum
Run -

Measure from west curb
Plum Valley $12\frac{1}{2} + 205 + 16\frac{1}{2} = 234$

Dist on east line of Culvert from
end of bridge about 88'

Dist to S. line Auburn 81 - 18.7

Dist on west line of culvert from
end of bridge about 110'
Dist to S. line Auburn 18.7

Levels Dr. Nelson Culvert

Bm.		20.00
Ins	5.18	<u>15.15</u>
Bridge floor	3.93	21.25
Chan	10.09	15.15
"	10.16	15.02
"	11.50	13.68
"	9.86	
Surface	5.60	
Center St.	4.20	

May 5 - 1914

Bm. Top Sand East Abut.

Chan. S. side Abut.

" " " "

" 100' North of St. side Abut.

" at west line Alley Nelsons Add.

Surface ground in lot west line Alley.

Center Street in west line Alley.

Hill Survey May 6-1904

On N. line Sec.

Start from stone mark in fence
at 40.00

at 40.10 1/2 old stone dug out
said to be disputed

at 50.33 stone in road Mrs.
Sec.

Philip Leomin Survey

West line Sec. 30 -

Stone SW¹/₄ - large Mon.
22' east of SW¹/₄ Sec. 30 -

SW¹/₄ Sec. 30.

Burr oak 20" S 35 1/2 W 127 lks.
Maple 18" S 48 1/4 E 173 "

Bearing N 1 1/4 W -

Length of Sec. from SW¹/₄ to NW¹/₄

80.44

at 40.22 center - line -

" 45.05 " " " " " " "

" 63.89 " " " " " " " "

Line (stone)



Philip Connor Survey

William Hamer } John
Isaac Hamer }
Philip Connor } mke

Line A

set stake in center of Hall & W.
Pike in line with fence
south side corner
with fence
North

at 29.63 set stake for S. line

Blank (now Hendon)

38.48 1/2 center Murchison's pole

40.46 stake in North line

Corner and center pole

set stake for Mrs Rose (formerly Miller)

at 40.23 1/2

(Note the needle did not work
freely on this line)

Jan 2 - 1904

Line B, on N. line corner
East

at 2.25 set stake for line
Rose (formerly Jas. Miller)

at 10.02 stone set for
Miller and Connor (old stone)

Line C. from stone
on line corner and Miller
South?
40.22 stone 5th corner

Line D
on south line from stone
to stake set in pit for trip
sq ft 10.01

N. side Turner stable
1.25 south of corner N. line

10 1/2 ft = 2.62 1/2
23 1/2

2.86

On line Rose lot of line
2.25 set stake at this end
from east side and 20 the
south of corner N. line

Thence to NE, cor Turner
stable 51E 1.07

Thence to corner post north
side of Muchmuffin pit
1.54 2 1/4 ft

on south line of Dummer
 from stone + fence to
 stake S < Dummer
 2.45 169 1/2 ft

on east line of lots south
 of Muchmuffin's fence set
 from stake set 2 ch
 from point at 29.63 to
 an iron bar set by H. M.
 for S < Barnhart
 formerly Pencer - to stake
 at north side Muchmuffin's
 fence 5 1/2 ft 8.37 to
 S < Barnhart -

and 30% lbs 169 1/2 ft from Dummer S <

6 rods	
5	
2 1/2	4) 33 1/2
10	8.37 1/2
5	
<hr/>	
28 1/2	
5 1/2	
<hr/>	
33 1/2	

GRIBBLE Survey.

Ch Cr. Chas. Yeck

Ch. Cr. Henry Dorn

Ch Cr. Lewis Yeck.

Gribble Survey. June 7, 1904.

Found stake at N.E. \angle of Yeckes
1 acre. Stake been removed since
1860. and claimed to be the corner
by old residents.

Line A.

along road on north to N.W. \angle
N. 85 $\frac{1}{2}$ W⁺
11.84 ch.

at N.W. \angle found stake.

old witness tree cut down.

Stump still standing. S. 10 $\frac{1}{2}$ E. 30 $\frac{1}{2}$ ch

new witness: 12" Hickory S. 57 W 45 ch

11.84 | 197.50 46.68

11.84
79.10
71.04

8060

7104

9560

94.72

88

16.68

11.84

66.72

13344

1668

1668

1974912

On W. line at S.E. \angle of Yeckes
10 acres at 11.47 $\frac{1}{2}$ from N. line
found fence but set where stake
had been driven.

On W. line at S.E. \angle of 10 acres and
S.W. \angle of 23 acres found old witness
out and end post of wire fence in
its place.

Line B.

From N.W. \angle 23 acres to S.W. \angle
S. 5 W. 088 set 10 ft. to east.
set temporary stake at 16 ch
and 17 ch S. 4 $\frac{1}{2}$ W

Line C. on East

Dug for stone at N.E. \perp of $15\frac{3}{4}$ acres
Nothing found.

Took end post at Hildebrand's

\star N.W. \perp

offset 48 lbs to E.

N. $4\frac{1}{2}^{\circ}$ E.

N. $4\frac{1}{2}^{\circ}$ E.

Set stone on top of Stake at

16.68 ch S. of N.E. \perp

Line D. on south

S. $85\frac{1}{4}^{\circ}$ E

S. $85\frac{1}{2}^{\circ}$ E.

11.84 ch

Set stone on top of walnut Stake
in W. line 16.68 ch S. of N.W. \perp

Wit: 6" Hickory N. $11\frac{1}{2}^{\circ}$ W 60 lbs

8" Oak white, S 2° W 33 $\frac{1}{2}$ lbs

Joseph Lynch

R.R. No 2, White County, Ga.

Dr Wilson grading level

grade stake			
sidewalk		20.00	
Sum	480	24.60	
Stake Sidewalk	426	20.54	
Sidewalk stake	434	20.46	
"	292	21.88	
Sta 0	3.50	21.00	
Sta. 22'	3.70	21.10	
" 49'	3.57	21.23	
" 59'	3.52	21.28	
" 90'	3.38	21.42	
" 110'	3.10	21.70	
" 140'	2.37	22.23	
Surface ground			
" 0'	7.10	3.30	
" 22'	6.60	2.90	21
" 49'	6.10	2.53	31
" 59'	5.95	2.43	9/10
" 90'	5.50	2.12	30%
" 110'	5.20	2.10	19
" 140'	4.13	1.52	32
Sum.	6.35	18.45	
170	2.00	22.30	22.30
Grade point $\frac{21.80}{22.30}$			

West Auburn Ave. June 10 1904
Sta. 0 -

1st stake west of Poseni run on bank
of ditch. Corp sidewalk stake on line
of west line 1st beam west of curb -
At 22' a line 2nd beam
" 49' " " 3rd
" 59' E " 3rd
" 90' " " 3rd
" 110' " " 4th
" 140' " " 4th
" 175' sidewalk grade stake

26	77	21.23
32		20.46
42		1.42
92		
10.1		

Set top East walk about Auburn Ave bridge

Dr. Wilson's grading work

June 18 - 1905

Sum 24.00

29' east 3.54 21.26

51 " 3.30 21.45

sidewalk

20.26

bank ^{20.45} ~~Pocum Run~~

Surface ground Fill

29' east 7.60 4.06

51 " 6.20 2.85

Ex ground between houses

1st & 2nd 7.20 17.60 21.40 3.80

1 & 2 6.90 17.90 21.05 3.15

2 & 3 5.10 19.70 21.25 1.55

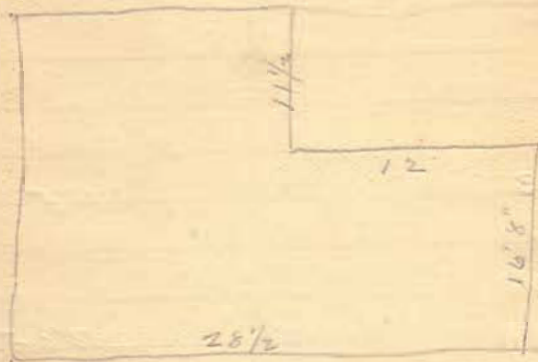
3 & 4 4.70 20.10 21.56 1.46

West of 4th 3.70 21.10 22.23 1.13

East line of 1st house and Pocum Run

29' east of sidewalk side of the road

street line



Survey No. 1.

Stakes To Road Survey.

0	S. 0° 30' E.
110.5'	S. 86 1/4° E.
673.5'	S. 85 1/4° E.
10+00	
20+00	
22+50	
27+38	S. 80° E.
30+00	
30+60	
33+89	S. 50 1/2° E.
37+64	S. 19 1/2° E.

Oct. 17, 1904.

S. 13.5' N. of fence on E. side of road running N. + S. and C. road. E. + W.

From Sta. 0 to Sta. 1+10.5 Stakes are set 6.5' E. of Center line.

See stakes are set 20' from Center line.

Stake Center + 20' N. + S.

Stake Center + 20' N. + S.

" " " " " " "

© T. + O. C. Ry.

Stake Cen. + 20' N. + S.

" " " " " " "
Center Road. 50' to 50+99

Stakes Cen. + 20' each way.

Stakes " " " " " "

40+57

S. 0° 0'

45+04

S. 18 E.

47+24

S. 18 E.

50+89

S. 55 1/2 E

61+32.5 X

S. 55 1/4 E.

68+32.5

73+0

S. 63 3/4 E

76+46.5

S. 75 3/4 E.

81+29.5

S. 76 1/4 E.

89+25.5

S. 76 1/2 E.

97+74.5

N. 78 1/2 E.

98+79.5

Iron Pin,

S. 79 E.

Stakes cen. + 20' each way.

Road 40' wide Sta. 0 to Sta.
50+89; 36' " " 50+89 to
Sta. 68+32.5

Center Road. 40' 50+89 to 61+32.5
Wit. 12" Red Oak S. 59 W. 39.5'
" 18" White " stamp S. 15 1/2 E. 52.5'

N. side road.
Wit. Elec. pole N. 39 1/2 W. 18.5'
Tel. " S 21 E. 40'
Stakes 18' from center. Begin
Reservoir Bank.

Edge of Bank. Stakes 20' from
center.

Stake Cen. + 20' from cen. each way

" " " " " " " "

" " " " " " " "

" " " 20 S. " "

Cen. Road.
Wit. Iron Horse N. 50 W. 29'
Tel. pole. S. 69 E. 39'

99+70.5

Iron Pin

3rd Survey of

20+53.5

N. 55 1/2 W.

24+99.5

N. 66 W.

23+14

N. 76 1/2 W.

1+86

91+0

0

Center road.

Wit. N.W. Cor. porch. S. 41 E. 89.5'

Tel. pole S. 83 W. 63'

Stokes Tp. Road.

Follow line of Survey No. 1
Sta. 26+53.5 to Sta. 0 of
Survey No. 1.

98+00 Survey No. 1.

50' N. of line of Survey No. 1
from Sta. 1+86 to Sta. 23+14 and
|| line of same.

96+46.5 Survey No. 1

At 99+94.5 Survey No. 1

At 98+99.5 of Survey No. 1.

" 99+90.5 " " "

Horn's Survey June 11, 1904 C.M.R.

Set corner between Horn
and Lewis Horn on line between
+ stone at E. side of Ry. and
+ stone at N.W. \angle of 2.60 acre tract.

Set 1" gas pipe 30" long for corner.

Line A.

From above \angle to stone in E. line
of Ry. N. 15° W. on Ludlow line

4.78 ch.

Line B. along E. side Ry.
N. 20 $\frac{1}{2}$ ° E

7.60 ch.

Set 30" iron bolt in \angle of road.

Wit: 40" Lynn 75 lbs distant S 10 $\frac{1}{2}$ ° W

14" Walnut 80 lbs distant S 10 $\frac{1}{2}$ ° E

2.75 ch.

Ed. Horn ch. Co.

Line C

From beginning point to N.E. \angle

Random N. 21° E. 11.72 ch.

Bearing should be N. 20 $\frac{1}{2}$ ° E

Moved W. 10-125 for corner

Set 1" gas pipe 4' long in center road

Line D. along road from N.E. \angle

N. 89 $\frac{1}{4}$ ° W to 1 inch gas pipe 4' long

at S. edge of gravel 1.86 ch.

Wit: 14" Walnut S 84 $\frac{1}{2}$ ° W 66 $\frac{1}{2}$ line

Line E. along road to iron bolt at
N.W. \angle

N. 48 $\frac{1}{4}$ ° W. 1.10 ch.

computation next page.

Computation Hart Survey

Bearing	Dist	N.	S.	E.	W.	D.M.D	N.A.	S.A.
N. 20 $\frac{1}{2}$ ° E	7.60	7.12		2.66		2.66	18.94	
S. 48 $\frac{1}{4}$ ° E	1.10		.74	.83		6.15		4.55
S. 89 $\frac{1}{4}$ ° E	1.86		.02	1.86		5.84		.18
S. 20 $\frac{1}{2}$ ° W	11.72		10.97		4.11 4.10	6.59		72.29
N. 15° W	4.78	4.61			1.24	1.24	5.72	

11.73 | 11.73 | 5.35 | ~~5.34~~
5.35

24.66 | 77.02

24.66

252.36

2.618

2.62 acres

Hugh Newell - Hartlyn

Survey June 17-1904

Line "A"

Start from stone STR Sec. 7

T. 3. R. 14 - ~~Harrison~~ Union Sp.

114 3/4 E

12.17 1/2 (48.7) down iron

bar by side of fence post.

H. H. Newell } ch co.
Benedict Roth }
Jacob Gode } notes.

Line "B"

on south line of sec -
from stone STR

S 86 1/4 E

at 27.33 center Carlisle fence.

" 30.00 set stake in line
run

set stake at 41.00

did not finish this line

Line 6"

from stone in front of
Church

Box Buy. Roths 55+ down
at 5.57 sh from Sbx $\frac{1}{2}$ sec
measured north on $\frac{1}{4}$ line

N 48

6.30 $\frac{1}{2}$

12.17 $\frac{1}{2}$

5.57

6.30 $\frac{1}{2}$

Line D

North line of Hartzler -
from stake set in east line
 $\frac{1}{4}$ sec

at 12.17 $\frac{1}{2}$ from Sbx $\frac{1}{2}$
and 6.30 $\frac{1}{2}$ " stone at church
to iron bar set for Hartzler
N 32

set $\frac{7}{8}$ gas pipe in center of
pipe in this line
at 6.30 $\frac{1}{2}$

at 87.91 iron bar N 32 Hartzler
measured back 8.21 for N 32
Roths 10 across off of
Hartzler. set iron bar
Roths N 32

On east line Roth 10 acres.
54 3/4 ft 12.21

On South line Roth or
Sec. line
58 1/2 ft 821
5 1/2 ft gas pipe

Austin Survey
Jesse Austin Ch. Cr.
Driscoll Wonders Ch. Cr.

Austin Survey Rushmore Tp.

Surveyed off 6 acres from S. E. of
Halls 159 Acres

A - Run E line by fences by agreement
between Williams and Hall
N. 5 1/2 W

Set stake at Williams, Cordrey & Hall

Set stake at N.E. of 6 acres 4.42 ch.

Wit: Double Linn 1 link S.E.

Line B. produced E. line to o of pike

N. 5 1/2 W

1.81 ch between Williams & Cordrey

Pike 75 links between fences.

set stake in o pike

Line C. on South Run by fences.

Between Hall & Cordrey

N. 84 1/4 E. N. 84 1/2 E

13.60 ch

Set Stake at S.W. of 6 acres

Wit: 26" Hickory Elm N. 78 W. 53 links

5" Pigeon Oak S. 44 W 18 links

June 18, 1904.

10 x 5 = 50 sq. ch.

13.60) 50.00 3.677

40 80	
9 20 0	13.6
81 60	3.68
10 40 0	1088.
9 5 20	816
<u>88 00</u>	

5(3.68
73 1/2 - links per acre

408
50.048
5.0048

3.68
73 1/2 -
4.42 for 6 acres

Line D on West of 6 acres

N. 5 1/2 W

4.42 Ch Set stake

Wit: 30" Sugar N. 26 W. 37 links

Line E on North of 6 acres

S. 84 W.

S. 84 1/2 W.

13.60 ch.

Line F. —

W. side of 1 red strip

S. $5\frac{1}{2}$ E 2.07 ch

set stake in oospire.

Line G. —

with pine

S. 34 W,

37 links

2.09
1.81
3.90
1.81

181
28
209

.19.

1.81

2.09

1.95

.20

970

370

78

10.1578

.04873

Tract N. of Cemetery.

0 S. 82° W.

26.50 ch. to A.

A N. 6 W.

5.82 ch. to B

N. 83 E.
N. 70 E.

.02

5.84

27.55 ch. to C. S. 5 W.

5.55 ch. to Begin.

Tract contains 15, 16 A.

For Hamilton Bros. Oct 14, '04.
N. E. cor. Corn. at Stake & iron post.

Center of road.

Along center of road.

Center of road.

Cedar post.

Stokes, Twp. Road. 209

Survey

30+60

S. 13 3/4 E.

Center of Road, 30+66 Survey
No. 1.

41+55

S. 29 E.

Wit. Telephone pole N. 6 1/2 W. 52.5'
" Telegraph " N. 45 3/4 W. 52.5'

42+69

S. 41 1/4

43+30.5

S. 55 E.

Wit. Telegraph pole N. 56 W. 49'
Telephone " N. 1 1/2 W. 45'

50+59.5

Sta. 50+89 of 1st Survey.

Plummer Shipley Survey.

Oct. 29, 1904.

C.M.R.

Found stone at S.W. \swarrow Mrs. Orion's lot (set by Buchanan)

Also found stake at S.E. \swarrow set by Buchanan.

Measured 45 feet from stake and set stake with tack for Shipley's S.W. \swarrow .

Took post for line between Bissel and Orion at Columbus St. Drove nail in post.

Measured 45 feet west for Shipley's west line. Set stake with tack.

On road cost line %
13%

39.87

13.80

26.07

28.00

20%

2 | 27.59 1/2

13.80

12.175 / 10 00 09 8.21

97.400

26000

24350

16500

12175

4325

~~32.80~~

48.7

229.88

162.72

1313.6

1599.308

14.11
13.11

14.11
41

14.11
13.11

57.801

Big John Johnson westward < -
with his line N 23 E 32 poles to stone
N 60 E 91 poles stone in Co. road -
with road S 26 N 37 poles to B. Williams &
with his line S 47 E 99. to begin

3

4/91

2275

Bridge near A. C. McClum

March 18 - 1934

Bridge 18' roadway

" 11' clear span

" 13' extreme length

Abutment A. Abut.

abats 22' with 10' wing 45°

about 16' high -

face - and build crosswall

W.L. to Stone & 4 D.S. T.1.R.8

And Secs. 32 & 33 - T.2. R. 8

Pleasant Sp.

R. Oak 26" 15 1/4 ft 64 3/4 ft

Street Records.

On Plum Valley St -
Chillicothe to Auburn 518'

Lots from Chillicothe South

66-52-52-52-ally¹⁰ 50-55-50-50-21

222 -

226

226

518

445

508

30

10

30

508

Mason's land along Auburn
St. 21' wide -