

TABLE for reducing PERCHES to FEET.

Per	Feet	Per	Feet	Per	Feet	Per	Feet	Per	Feet
1	16.5	21	3,46.5	41	6,76.5	61	10,06.5	81	13,36.5
2	33.0	22	3,63.0	42	6,93.0	62	10,23.0	82	13,53.0
3	49.5	23	3,79.5	43	7,09.5	63	10,39.5	83	13,69.5
4	66.0	24	3,96.0	44	7,26.0	64	10,56.0	84	13,86.0
5	82.5	25	4,12.5	45	7,42.5	65	10,72.5	85	14,02.5
6	99.0	26	4,29.0	46	7,59.0	66	10,89.0	86	14,19.0
7	115.5	27	4,45.5	47	7,75.5	67	11,05.5	87	14,35.5
8	132.0	28	4,62.0	48	7,92.0	68	11,22.0	88	14,52.0
9	148.5	29	4,78.5	49	8,08.5	69	11,38.5	89	14,68.5
10	165.0	30	4,95.0	50	8,25.0	70	11,55.0	90	14,85.0
11	181.5	31	5,11.5	51	8,41.5	71	11,71.5	91	15,01.5
12	198.0	32	5,28.0	52	8,58.0	72	11,88.0	92	15,18.0
13	214.5	33	5,44.5	53	8,74.5	73	12,04.5	93	15,34.5
14	231.0	34	5,61.0	54	8,91.0	74	12,21.0	94	15,51.0
15	247.5	35	5,77.5	55	9,07.5	75	12,37.5	95	15,67.5
16	264.0	36	5,94.0	56	9,24.0	76	12,54.0	96	15,84.0
17	280.5	37	6,10.5	57	9,40.5	77	12,70.5	97	16,00.5
18	297.0	38	6,27.0	58	9,57.0	78	12,87.0	98	16,17.0
19	313.5	39	6,43.5	59	9,73.5	79	13,03.5	99	16,33.5
20	330.0	40	6,60.0	60	9,90.0	80	13,20.0	100	16,50.0

Entered according to Act of Congress, in the year 1866, by James W. Queen & Co.,  
in the Clerk's Office of the District Court of the United States, for the Eastern  
District of Pennsylvania.

TABLE of Decimal Parts of a FOOT for  
each Inch and Sixteenth of an Inch.

In	0	1	2	3	4	5	6	7	8	9	10	11
0	000	083	167	250	333	417	500	583	667	750	833	917
	005	089	172	255	339	422	505	589	672	755	839	922
1	010	094	177	260	344	427	510	594	677	760	844	927
	016	099	182	266	349	432	516	599	682	766	849	932
2	021	104	187	271	354	437	521	604	687	771	854	937
	026	109	193	276	359	443	526	609	693	776	859	943
3	031	115	198	281	365	448	531	615	698	781	865	948
	036	120	203	286	370	453	536	620	703	786	870	953
4	042	125	208	292	375	458	542	625	708	792	875	958
	047	130	214	297	380	464	547	630	714	797	880	964
5	052	135	219	302	385	469	552	635	719	802	885	969
	057	141	224	307	391	474	557	641	724	807	891	974
6	062	146	229	312	396	479	562	646	729	812	896	979
	068	151	234	318	401	484	568	651	734	818	901	984
7	073	156	240	323	406	490	573	656	740	823	906	990
	078	161	245	328	411	495	578	661	745	828	911	995

Entered according to Act of Congress, in the year 1866, by James W. Queen & Co.,  
in the Clerk's Office of the District Court of the United States, for the Eastern  
District of Pennsylvania.

City Eng. record.  
W. Liberty St. levels.  
A. H. Windham.  
School Lot. Richland T.P.  
Semetary Survey Belle Center  
Lake View St.  
Mattoy  
Hammer Road.  
Benton Levels.  
Sharp Survey.  
Wade " Monroe T.P.  
Mat Hoogler



City Eng. Records.

Chillicothe and Evansville -  
Stake center -

Top screw of hyd. sloping meas. N.E. 37.45'  
S.E.  $\angle$  central sidewalk N.W. 33.82'  
Iron pin 7" - East side Evans. 17° below ground 30'

Chillicothe and Everett - Iron pin -

Chillicothe and Caroline - Iron pin -  
Old apple tree 26" N.E. 41.7  
N.E.  $\angle$  1 story frame house south 46.8'

Chillicothe and Plum Valley - Iron bar -

Hyd. S.E. 34' 1"  
Elec. Light pole SW. 27' 7"

Plat. Dist. Seymour to Evansville  
200'

Howit Seymour St.

Auburn and Evansville - Iron bar

Top screw hyd. N.E. 28.75'  
Elec. Light pole N.W. 25.1'  
SW  $\angle$  stone foundation main part house N.E.  
66' 7"

Auburn and Plum Valley - Iron bar

SW  $\angle$  Rantam house 38'  
NW  $\angle$  " " 33' 8"

Auburn and Seymour (South)

Iron bar

Apple tree 20" S 6° E 53.5'  
S.E.  $\angle$  stone foundation house <sup>N 46 1/2° W</sup> 62.9'  
N.E.  $\angle$  " " .. 57 1/4 - 121.45'

Note - On Auburn Ave. + Seymour St. to +  
Seymour S. = 69'

Measured dist on Seymour  
Chil. - E. to Auburn. 516.5'

## West Liberty.

The Stone at said St.

## Raised St.

Beginning at the center of the W. end of the bridge over the mill race where the corner corner said Street, and 2.61 ft. above the Stone on the E. line of said Corporation, thence W. 32 rods falling 2.31 ft. for Stone to the center of Market Street and 42 of a foot above the Stone at said Street.

## S. Side Sidewalk.

From a point in the center line of said Street 50 ft. E. of the E. end of the iron bridge across the mill race, on said center line, as the initial point; thence on every E. by Stations of 100 ft. each.

At Sta. 0 3 ft.; at Sta. 1,

## West Liberty.

4.33 ft.; thence by regular fall of .33 to 100 to Sta. 5, elevation at Sta. 5, 5.65 ft.; thence from Sta. 5 E. by a regular fall of .10 to 100 to Sta. 11, where the elevation shall be 6.25 ft.

## S. Side Sidewalk.

Sta. 0, 3 ft.; Sta. 1, 4.65 ft.; thence by regular fall of .25 to 100 to Sta. 5, where the elevation shall be 5.65 ft.; thence from Sta. 5 E. by regular fall of .10 to 100 to Sta. 11, where the elevation shall be 6.25 ft.

The grade of said sidewalk shall rise by plane from Sta. 0 to the top of the pier of said iron bridge, the above elevation being and as near



West Liberty

were found a datum line  
 four above and the elevation  
 of the cap stone at the  
 N. side of the iron setting  
 of the head rail at the N. E.  
 corner of the approach from  
 bridge, 1,62 ft. from and  
 below the same said datum  
 line.

Grade Stones.

Grade Stone 21 ft. S.  
 of the center of Street 60 ft.  
 wide running E. & W., and  
 21 ft. W. of Street 60 ft.  
 wide running N. & S., and  
 25 ft. from center of all Sts.  
 70 ft. wide, excepting only  
 Lecturer St., where they are  
 25 ft. W. of the center, and  
 excepting Runkle St., where  
 they are set 21' W. of center;  
 only at crossing of Taylor  
 and Runkle Sts. where it  
 is 21 ft. S. of the center of

West Liberty

Runkle St., and 21 ft. S.  
 of center of Taylor St.; and  
 excepting at intersection of  
 Taylor St. with Lumber  
 road where the stone is in  
 the center of the crossing  
 of said St. and road;  
 and excepting at the crossing  
 of White and Columbus Sts.  
 where the stone is 37 1/2 ft.  
 N. of Columbus St., and 21  
 ft. E. of White St.

# Heat Liberty

Detroit St. center of st. South to center of Runkle St.

B.M.	3.64		40.00	
0+00	3.20	.44	40.44	
1+32	4.0	.80	39.64	
2+31	4.68	.68	38.96	
2+64	4.16	4.64	.02	38.98
B.M.	4.34	.18	38.80	
3+96	4.64	.30	38.50	
5+28	3.06	5.86	1.22	37.28

	3.80	.74	36.54	
B.M.	3.70	.10	36.64	
6+60	4.0	.30	36.34	
7+92	5.66	1.66	34.68	
8+25	3.66	6.42	.76	33.92

	4.20	.54	33.38
B.M.	3.76	.44	33.82
10+57	4.39	.63	33.19

0+00 to 3+96 fall 50' per 132'  
 12' below stone (44 above)

Center of Newell St.  
 52' above stone. (16 above)

3+96 to 6+10.5 fall 100' per 132'

Center of Columbus St.  
 15' above stone (10 below)

Center Baird St. 42' above stone  
 S.W. Cor. sidewalk at int. Detroit  
 and Baird.



11+89	5.08	.69	32.40
13+21	5.16	.08	32.32
	5.18	.02	32.30

11+73 total 52.5 full 15' per side

Center Runkle St. Level with stone

Grade called for  
Baird St. Center Detroit

0+00	4.20	33.38
1+32		35.69
2+64		38.00
3+63		39.73

West Liberty.  
by City ordinance.

St. E. on center Baird.

Center Detroit St. 42' above stone

Rise from 0 to 3+63 231' per  
132'

Center W. side bridge 2.61' above  
stone.

West Liberty

East side Detroit St. E. on

0+00	4.17			33.41	33.6
B.M.	3.76	AI		33.82	
B.M.	4.01		.25	33.57	
	4.04		.03	33.54	
1+00	6.19	3.98	.06	33.60	34.1
2+00	4.32	1.87	1.00	35.47	36.3
3+00	1.20	3.12		38.59	38.5
B.M.	.05	1.15		39.74	
				<hr/>	
	6.61		.28	6.33	
	.28				
	<u>6.33</u>				

Baird St. 15' N. of S. side of Baird.

E. side Detroit St. 15' N. of S. side

Blair St.

Top of sidewalk at N.W. cor. bldg.

Outer edge sidewalk 10' N.

Floor of bridge at S.W. cor.



1569

INDEXED ON MAP

A. H. Woodman.

June 17, 1904.

to	A		16' N. S. 82 3/4 W. ✓
46.65 ch	B	46.65	
to			10 hrs. W. S. 7 E. ✓
9.83	C	-24 9.59	
to			16' N. S. 82 3/4 W. ✓
52.23	D	+10 52.73	
to			Con. line N. 51 W. ✓
4.0	E		
to			N. 7 W. ✓
38.65	F		
to			N. 87 1/2 E. ✓
6.48	G		
to			N. 78 1/2 E. ✓
6.47	H		
to	I		N. 76 1/2 E. ✓
5.26 1/2			
to	J		N. 68 1/2 E. ✓
4.66 1/2			
to			N. 78 1/2 E. ✓
7.64	K		
to			N. 7 W.
3.70			
9.05			

Center Road S.E. Cor. tract. Lima Pike.

Center Road

" " S. side tract.

N.W. Cor.

Stone

"

N 7 1/2 W

92 W

180  
96 1/2

Stone

S. bank River.

Stone

11.45 1/2 L

to

S. 76 E. ✓

Cor.

16.89 M

to

S. 1 E. ✓

Stone

6.90 N

to

N. 89 1/2 E. ✓

Stone

9.90 O

to

N. 30 1/2 E. ✓

Big Ash tree. Skillman. Chas + Wind.

11.58 P

to

S. 50 E. ✓

Stone

6.30

to

N. 79 E. ✓

Stone

8.77 R

to

N. 30 1/2 E. ✓

Stone

4.78

to

N. 7 W. ✓

Stone

4.78 T

to

N. 81 1/4 E. ✓

Cherry Creek

7.0 U

to

N. 37 E. ✓

14.27 V

to

N. 84 1/2 E. ✓

Center Road.

3.30 W



to  
45.92 A

S. 7 E. ✓

Cotton Road place of Beginning.

(1570)

School Lot Survey  
INDEXED ON MAP

One acre out of J.M. Bennett  
Orchard.

SE  $\swarrow$  + of Huntsville and  
Roundhead pike with Archer  
pike.

found N. line Bennett  
by measuring 14' north from stone  
described in deed from  
Bennett to J.K. Elder - said  
to be 14' south of line by Elder  
and run  $\swarrow$   $\swarrow$  stone  $\swarrow$  to  
Elder and Bennett in the  
Rebucke line.

N 82 $\frac{1}{2}$ ° E at 350 set bar in pike -  
set iron bar in Elders east line  
and Bennett's N. line - in  
center pikes

Huntsville road

Archer road

63° 27'

Junction - 117 - 273

Richland Twp. July 6 - 1904

Bearing of Huntsville and  
Roundhead pike -

S 30° E

at 450 set iron bar in pike

Bearing south line N 62 $\frac{1}{2}$ ° E  
1.34





Bearing of east line

$56\frac{3}{4}^{\circ}$  E

396 to corner post -  
with application 10" N 12" E 30' etc.

Archway road

90' 4"

East line

Cemetery Survey Belle Centre -

On south side length of  
line Hedge fence 1250  
A802

$$\begin{array}{r} 1250 \quad | \quad 2000 \quad | \quad 1160 \\ \hline 1250 \\ \hline 7500 \\ 7500 \end{array}$$
$$\begin{array}{r} 500000 \\ \hline 500 \\ \hline 100 \end{array}$$

East line of lot surveyed  
S 7 1/2 E 164 to stake

South line S 83 W 1250  
to iron gas pipe in said  
public road.

Line "B"  
on road west side -  
S 7 1/2 E 160  
2 1/2 in bar 1/2 gas pipe



0  
+80  
-

6759.7

Iron bar N. Side Mine  
5 " "

Iron Bar center Cope.

# LAKE VIEW STREETS.

N. MAIN ST. E. <sup>9</sup>/<sub>4</sub> W. sidewalk

B.M.			
		<u>49.78</u>	
⌘	4.56	<u>54.34</u>	
0	4.14		50.20
0+4	4.56		
0	4.14		50.20
1	4.06		50.28
2	3.98		50.36
3 E.	5.47	48.87	50.44 Fill 1.57
3 W.	3.90		50.44
4	3.82		50.52 ch.
5	3.68		50.66
6	3.54		50.80
7	3.40		50.94
8	3.26		51.08
9	3.12		51.22
⌘	5.04	<u>56.26</u>	
10	4.90		51.36 ch.
11	4.78		51.48 ch.
12	4.76		51.50
13	4.74		51.52
14	4.72		51.54
15	4.70		51.56
0 Street	4.60		

50.20

Grade

B.M. s.w. ↙ street intersection

Sta. 0. N. side <sup>E.</sup> Lake St.

0+4 W. side N. Main St. iron pin.

0 E. " " " "

3 E. side



# LAKE VIEW

N. MAIN Street. E. by W. side - walk grade

	X	<u>56.26</u>	
16	4.68		51.58
17	4.66		51.60
o Street	4.70		
18	4.64		51.62
19	4.62		51.64
20	4.60		51.66
21	4.58		51.68
22	4.56		51.70
+23	4.55		51.71

Levels at S.W. L of Square

B.M.		<u>49.78</u>	
X	4.05		53.83
Fry's Door sill	3.10		50.73
B.M.		<u>49.78</u>	
X	39.3		53.71
Bot. Fry's Siding	3.43		50.28
	3.39		50.32

50.74

# LAKE VIEW Streets.

S. Main St. W. sidewalk

7/20, 1904 C.M.R.

13	<sup>52.40</sup> 52.40	
<del>13</del>	3.62 56.02	
11	3.72 <sup>52.30</sup> 52.30	
10	3.77	52.25
12	3.67	52.35
14	3.57	52.45
15	3.43	52.59
16	3.29	52.73
17	3.15	52.87
18	2.56 at rail	53.46
19	2.72 <sup>53.30</sup>	53.30
<del>19</del>	3.10 56.40	
20	3.12	53.28
21	3.08	53.32
23	3.00	53.40
24	2.96	53.44
25	2.92	53.48
26	2.88	

26 At Corporation line.



MATTOX SURVEY.

A. W. Roush } ch. cr.  
Cliff. Warren }

Mattox & Rodgers

Mattox Survey.  $\frac{7}{2}$  = 1904

Found stone N.W.  $\leftarrow$  7 acres  
in  $\odot$  road.

Off set 10' South

Line A

S.  $89\frac{3}{4}$  E Random.

at 17.93 ch. W. side of T+O.C.

at 18.94 ch E. " " "

36.32 ch. set stake

Passed tree at 35.98

Came out 6" S. of corner.

Total Northing 9' 6"

set hickory stake 33 links

E. of 12" black Walnut

Set stake at 18 ch. N. 4' 9"

" " " 10 ch N 6' 10"

Corrected bearing S.  $89\frac{1}{2}$  E.

Line B.

with  $\odot$  road. N.  $25\frac{1}{2}$  E.

11.01 ch.

Set hickory stake in road

Wit: 4" Apple tree N.  $59\frac{3}{4}$  W. 45 lbs.

12" W. Oak S.  $53\frac{3}{4}$  E. 90 lbs

Washington  $\frac{10}{32} = \frac{5}{16}$  2.81  
2.81  
9.32  
62

114 125  
10

Bearing of R.R. by calculation

N.  $16\frac{1}{2}$  W Distance 10.44 ch

10.44 ch across tract

Line C.

On North S.  $89\frac{1}{2}$  E.

10.34  $\frac{1}{2}$  ch W. side Ry.

32.57 ch set stake. Correct this

distance to 32.41 (Bad chaining here)

Line D.

From S.E.  $\leftarrow$  along river

N.  $20\frac{1}{2}$  E. 3.47 ch. set stake

Line E.

N.  $\frac{3}{4}$  E 3.36 ch. set stake

Line F.

N.  $7\frac{1}{4}$  W. 2.55 ch set stake

Line G.

N. 10 W.

(63) .85 links. Set  $\leftarrow$  stake

Wit: 12" Hackberry S  $7\frac{3}{4}$  W 16 links

. 10" Walnut S.  $6\frac{1}{2}$  W 40 lbs.



Road 33 Pleasant  
Hamm Road Survey.

Aug 15 - 1904

Sta 0. at 282 Water Works  
lot -

John C. Brown /  
O. P. Stokes / Viewers  
W. L. Bruce

585 1/2 ft  
with south line Water Works  
lot.

Donald Wenden ch cr -  
William Strayer ax

at 335 1/2' line Shaffer on  
south -

at 355 1/2' line Water Works  
and Adriaens on north -

at 922' line Shaffer and  
Van Meter on south -

at 1220' line Van Meter  
and Hamm on south -

at 1854' stone in road line Hamm  
and line Adriaens

St. stakes



With line Adgince and  
Hamm N 6 1/2 E  
at 2218 set stake -

$$\begin{array}{r} 2218 \\ 1864 \\ \hline 364 \end{array}$$

On line between two old  
Taylor tracts  
Across Hamm  
S 86 1/2 E  
at 4416 1/2' end of road  
in center of county road

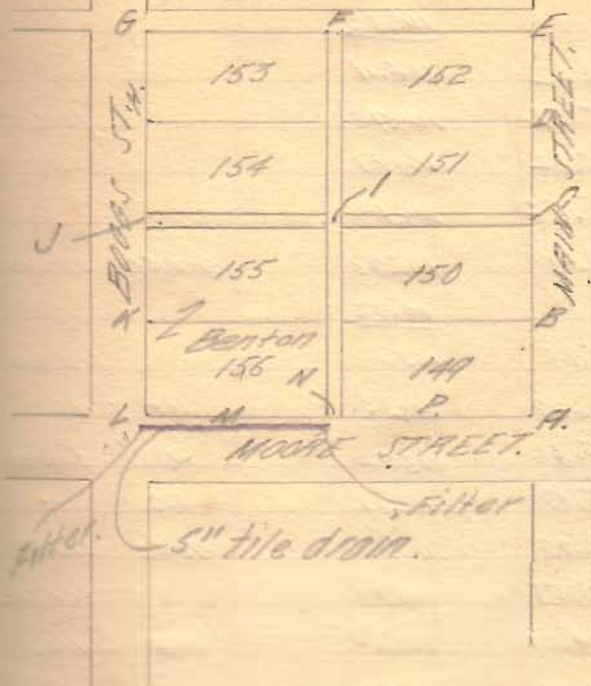
$$\begin{array}{r} 4416 1/2 \\ 2218 \\ \hline 2198 1/2 \end{array}$$



# Benton Levels.

A	5.82	107.06	grade stake.
Ins.		112.88	
A	6.42	106.46	gutter.
B	5.31	107.57	W.S. side W.
"	6.10	106.78	5' W.
"	5.83	107.05	gutter.
C	4.83	108.05	W.S. side W.
"	5.95	108.09	5' W.
Ins.	6.88	114.03	
"	6.53	107.35	gutter.
D	5.99	106.29	
"	5.06	107.97	5' W.
"	6.19	107.84	gutter.
E	5.16	108.87	
"	4.88	109.35	5' W.
"	5.29	107.50	gutter.
Ins.		111.29	
F	4.01	107.28	
G	4.84	105.49	
Ins.		110.23	
G	4.95	105.38	E. S. side W.
"	4.73	106.00	5' E
"	5.10	105.28	gutter.
H	4.93	105.40	E. S. side W.
"	4.10	106.23	5' E.
"	5.15	105.18	gutter.

Sept. 29, 1904.



Ins.		<u>110.33</u>	
I.	4.22	106.11	
J	5.37	104.96	gutter.
K	5.72	104.61	"
L	5.65	104.57	"
43.59	4.60	105.73	grade stake
Ins.		<u>109.32</u>	
L	5.06	103.30	top tile
M.	4.49	104.88	At fence
"	5.40	103.92	N.S. filling
"	5.18	104.14	S.S. "
"	3.98	105.54	grade stake
"	5.58	103.94	top tile
"	4.27	105.05	top filling
N	4.22	105.10	
"	3.99	105.33	grade stake
"	4.82	104.50	N.S. filling
"	4.50	104.82	S.S. filling
"	3.68	105.64	top "
"	5.40	103.92	" tile.
P	4.63	104.69	At fence
"	3.76	105.56	grade stake
"	4.74	104.58	gutter.
A	2.26	107.06	grade stake.



Sharp Survey.

Iron Pin	N.	33	W.	10ch	0 lbs	S
	N.	51	E.	2"	50"	
	N.	44	E.	3"	37 1/2"	Stake
	N.	30 1/2	E.	6"	48 1/2"	Stake
	N.	83 3/4	E.	4"	0"	
	N.	67 3/4	E.	1"	69"	
	S.	81 3/4	E.	2"	0"	
	S.	79	E.	0"	29"	
	N.	84 1/2	E.	4"	20"	Stone
	S.	41	E.	4"	54"	Stone
	S.	22	W.	9"	75"	Iron Pin
	S.	63 1/2	W.	14"	75"	

Iron Pin.	N.	33	W.	7ch	75 lbs	Stone
	N.	51	E.	2"	50"	7 1/2 lb.
	N.	33	W.	2"	25"	Stake
	N.	44	E.	1"	69 1/2"	
	N.	77 3/4	E.	15"	67 1/2"	
	S.	38	E.	3"	65"	Stone
	S.	22	W.	5"	50"	
	S.	63 1/2	W.	14"	75"	Iron Pin

Aug. 31, 1904.

S. line from W. line of survey  
 Dec. 4, 1899, 37 1/2 lbs. S. of Hickory  
 Tree 5 lbs. W. of Sand line. (Hickory  
 Tree 18" diameter).

W. Bank old mill pond.

C. T. & O. City, 2 ch. 9 1/2 lbs.

C. road.

C. T. & O. City, 4 ch.

Along center of fence.

To beginning

Jan. 17, 1905.

S. line right of way T. & O. C. Ry.

With S. line right of way.

Center East L. & Mid. pike.

" " " " " "

9.52 Acres.

Iron Pin	N	32	W	7ch	70lbs.	Stone	
	N	51	E	2"	50 "	Wd	Tree



Sharp Survey.

Jan. 21, 1905.

A				
Harrow tooth.		N. 15 3/4 E.		Harrow tooth.
B	273 ft	81° 50' B.		"
C	64 "	12° 20' L.		"
		130° 20' B.		"
D	173.5 "	8° 50' L.	(Along 12° 20' L.)	"
E	76.3 "	61° B.		"
F	56.5 "	74° 19' B.		"
G	115.3 "	38° 41' B.		"
H	75.3 "	113° L.		"
I	38 "	91° 48' B.		"
J	48.5 "	90° 41' B.		"
C	211.9 "			"
J		90° 41' L.		"
K	58.2 "	21° 12' B.		"
A	208.5 "	118° B. to B.		"

520.3 ft. W. of intersec-  
tion of N. line of right  
of Way of T. & O. C. Ry.  
produced with center  
of East L. & Mid. pike.  
Center E. L. & Mid. pike.

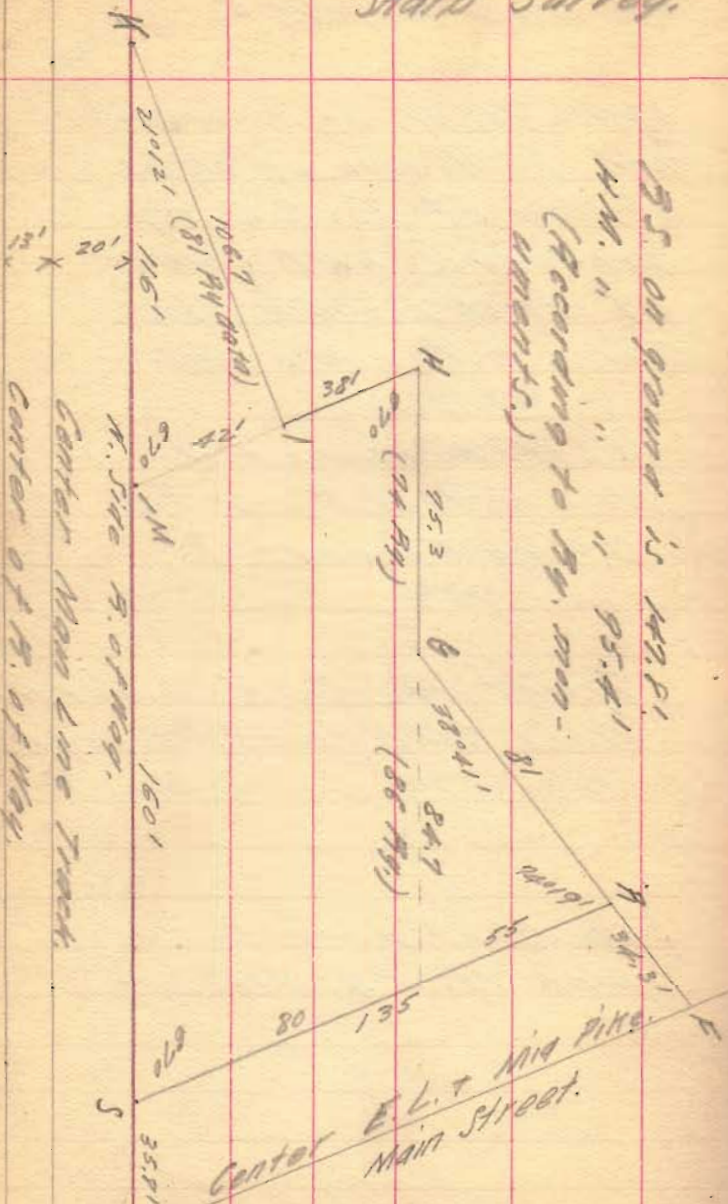
" " " " " "  
34.3 ft. W. on line F G  
from F to N. E. cor Ry.  
Station Grounds.

Tract ABCJK 0.868 A.  
Tract CDEFGHI 0.634 A.

See next page for  
plot of Ry Grounds.



Shard Survey.



R.S. on ground is 147.5'  
 W.M. " " 95.4'  
 (According to Ry. man-  
 uments.)  
 Ry. has taken center  
 of Main Line track as  
 center of R. of Way,  
 making error on line R.S.  
 14 ft.

Wade Survey.

Wm. Jordan } ch. Cr.  
Ben Moots }

R. N. Jordan

W. L.

# Wade Survey, Monroe

## Line A

Found Harrow tooth in  $\odot$  of  
Pine and in S. Line of Survey

N. 60° E 20.57 ch to  
iron Harrow tooth at S. E.  $\odot$

of 77 acre tract corner of  
Jordan, Randall, Kauffman

Wit: 18" W. Oak S. 19 $\frac{1}{4}$ ° E 39 lbs

12" W. Oak S. 75 $\frac{1}{2}$ ° E 55 lbs

## LINE B ON East side.

21.61 ch. N. 15 $\frac{3}{4}$ ° W

to stone at W. side of old Will  
Cherry.

32  
Tp. 5 Feb. 28, 05.

## Line C on N. side of tract

offset 10' to North

Set Stake at 10 ch

N. 51 $\frac{1}{4}$ ° E

25.25 ch. S. 80 $\frac{3}{4}$ ° W

To ~~stone~~ 4' W of  $\odot$  of gravel

near W. of stone

## Line D with road

13 ch S. 1° W.

Set Stake

Wit: Large Burr Oak N. 13° W. 14 lbs

24" Burr Oak S. 63° E. 43 lbs

## Line E. with road

4.29 ch S. 2° E.

Set rounded boulder in  $\odot$  gravel

Location of corner pointed out by

Forsythe



21.61	23.33
25.06	9.37
2 46.67	163375
28.335	69.995
	20997

LINE F. with s. side rail fence  
with N. side 20 Acres

18.46 ch. N. 81 E

calls for 16.63 ch

Set stake at 18.46  
Location of corner pointed out by  
Foreythe

Line G

with E. side 20 Acres

S 2 1/2 E

9.27 ch to Stake in O of pipe

6.50 ch E. of Harrow tooth at  
beginning of line A.

Line H with pipe

14.08 1/2 ch N. 60 E.

See next page 21.86 Acres.  
21.86 Acres.

Line I

Dividing 34 acres from 21.86

Set stake 9.47 ch from  
S. E.  $\swarrow$  in O pipe. wit: 12" Hickory  
47 lks. N.W.

N. 15 3/4 W.

to W. side of tract.

Random Line Came out  
at 9.45 ch from N.E.  $\swarrow$

Set Stake at 9.43 ch from  
Wild Cherry Corner  
on this random line Set  
Stakes every 5 ch.

Corrections:

- 1st stake from pipe: 3" E.
- 2nd " " " : 6" E.
- 3rd " " " : 9" E.
- 4th " " " : 12" E.
- 5th " " " : 16" E.

See next page

23.57

### Line I

Dividing 34 Acres from 23.58 Acres

Wade in possession of 1.72 Acres

<sup>move</sup>  
^ then his deed calls for.

$$21.86 + 1.72 = 23.58$$

S. E. L of 34 Acres is 10.37 ch  
from iron pin at end of line A.

N. E. L of 34 Acres is 10.11 ch  
from stone <sup>9</sup>/<sub>4</sub> Cherry tree at end  
of line B.

Set iron pin at S. E. L 34 Acres

Wit: 16" Hickory N. 16 E. 53 1/2 lks

Random N. 15 3/4 W 25.29

Came out .17 links S. of L →

### Corrections

5 ch 3 2/5 lks N.

15 ch 6 2/5 lks N.

15 ch 10 1/5 lks N.

20 ch 13 3/5 lks N.

25 ch 17 lks

10.3  
18.11  
9.43  
-----  
.68

10.00

7.92 120.0 (15  
-----  
792  
4080  
-----  
3760  
-----  
120

→ Set stake for L

Wit: 10" W. Oak S. 16 1/2 W 25 lks

15" W. Oak S. 72 E. 30 "



Mat. Koogler Survey

Mat. Koogler } ch. cr.  
Chas. Emerine }



# Mat Koogler Survey

## Line A.

Found stone in X roads at  
 N.W.  $\angle$  Section S. 55 $\frac{1}{2}$ ' E  
 chained E. along road  
 Set temporary stake at 20.05 ch.  
 in line ~~to~~ Makemison's E. line fence  
 came out at N.E.  $\angle$  of  $\frac{1}{4}$  sec.  
 40.01 ch. Found stone

## Line B.

Along E. side Qr. Sec. Off-set 7' W.  
 Random S 4 $\frac{1}{2}$ ' W 38.15 $\frac{1}{2}$  lks.  
 Set temporary stake at 20. ch.  
 Off set 14' E. 16.77 ch  
 " " 4' W.  
 Set temporary stake at 30 ch  
 Off-Set 4' W.  
 came out 19' 8" E. of  $\angle$  stone 30 lks  
 19' 8" Total Easting 20' 8"  
 7 " Corrections 4 $\frac{1}{2}$ " to ch.  
 26' 8"  
 6 " 20 ch stake move 3' 10" W  
 20' 8" 16.77 ch " " 2' 1" W  
 30 ch " " 17' 4" W.

19' 5" 47.01  
 3/5, 05. C.M.R.

## Line C

Along S. side  
 19.64 $\frac{1}{2}$  ch to stone.

## Line D

Along W. side Random  
 Off-set 8' W = N. S. E  
 Set stake at 10 ch. by 20 ch.  
 off-set 21' E.  
 Set stake 30 ch  
 38.14 ch to stone in road  
 Came out 43 $\frac{1}{2}$  lks E. of stone  
 42 $\frac{1}{2}$  lks = 28.7 ft.  
 Total Easting 28.7 + 8 = 36.7 - 21 = 15.7  
 Corrections 10 ch + 13 ft. 3.87' E  
 " " 8.26 ft 12' W.  
 38 $\frac{1}{2}$  lks " 30 " 12.39 ft 25.39' W  
 " " 38 " 15.69 28.69' W  
 " " 19.07 " 7.88 1 $\frac{1}{2}$ ' E.

Line E

Between

Miller and

Koogler

Set stone on  $\frac{1}{2}$  brick for  $\leftarrow$  at W line

19.07 ch from S.W.  $\leftarrow$

With 8" Elm N. 16 E. 46 lbs

16" White Oak S. 68 $\frac{1}{2}$  W 32 lbs

Random S. 85 $\frac{1}{2}$  E. ass. at 5' S.

Set stake at 10 ch

Set stone on  $\frac{1}{2}$  brick for  $\leftarrow$  at E line

19.08 ch from S.E.  $\leftarrow$

19.79 ch

Came out 1' 8" S. 2

Total Northing 3' 4"

Set 10 ch stake 3' 4" N.

19.64
19.96
<u>39.60</u>
19.80

38.15
19.8
<u>30520</u>
34335
3815
<u>755370</u>

24.73

120

6.53

38

5224

1959

12) 275.14

20' 8"

26' 8"

20' 8"

19.96

19.64

2) 39.60

19.80

19.075

19.72

38150

133525

171675

19075

376159.00 Acres

38.15

1.53

30

7.92

19.590 24.73 lbs

1584

5750

1151

5320

3544

2260

120

40

20' 8"

40

248

16' 9"

19.075

19.8

152600

171675

19075

3776850

19.79

19.96

39.75

19.875

19075

99375

139125

178875

19875

379115625