

Anderson-Bell Pike

as given by Co. Line Survey. 1884.

N. 1/4 W. }  
 N. 1/2 W. }  
 N. 1/4 W. }  
 N. 1/4 W. }

Sec. line between Blaring

Sec. 16 & 17. Blaring

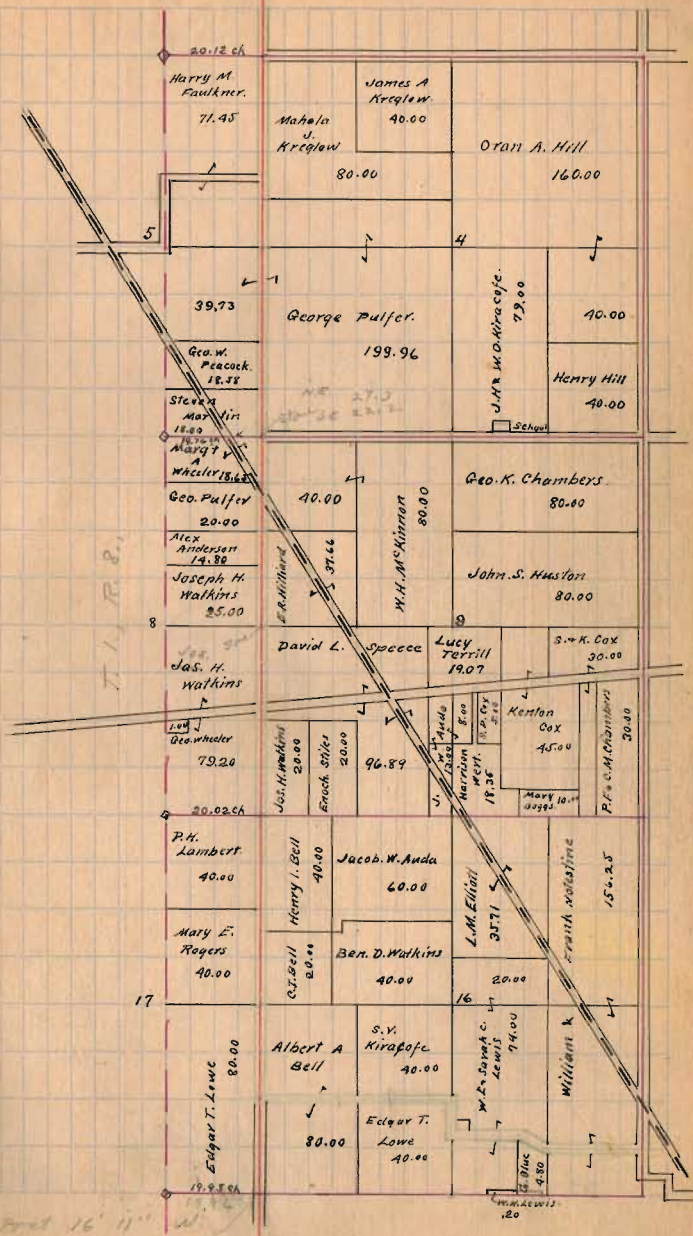
8 & 9 "

4 & 5 "

32 & 33 "

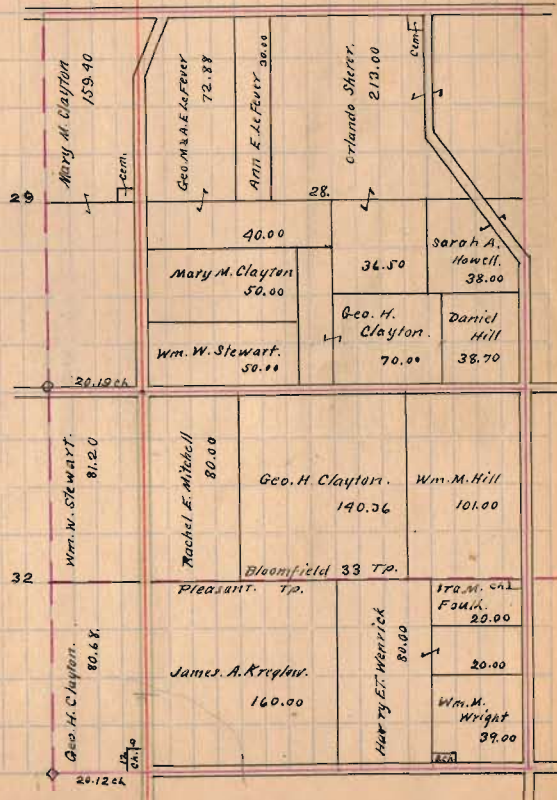
1584

(INDEXED ON MAP)



Monday 28-29-32-33

Amount Plot W.E. 27-11  
Ch. S.E. 24-7



1584

INDEXED ON MAP