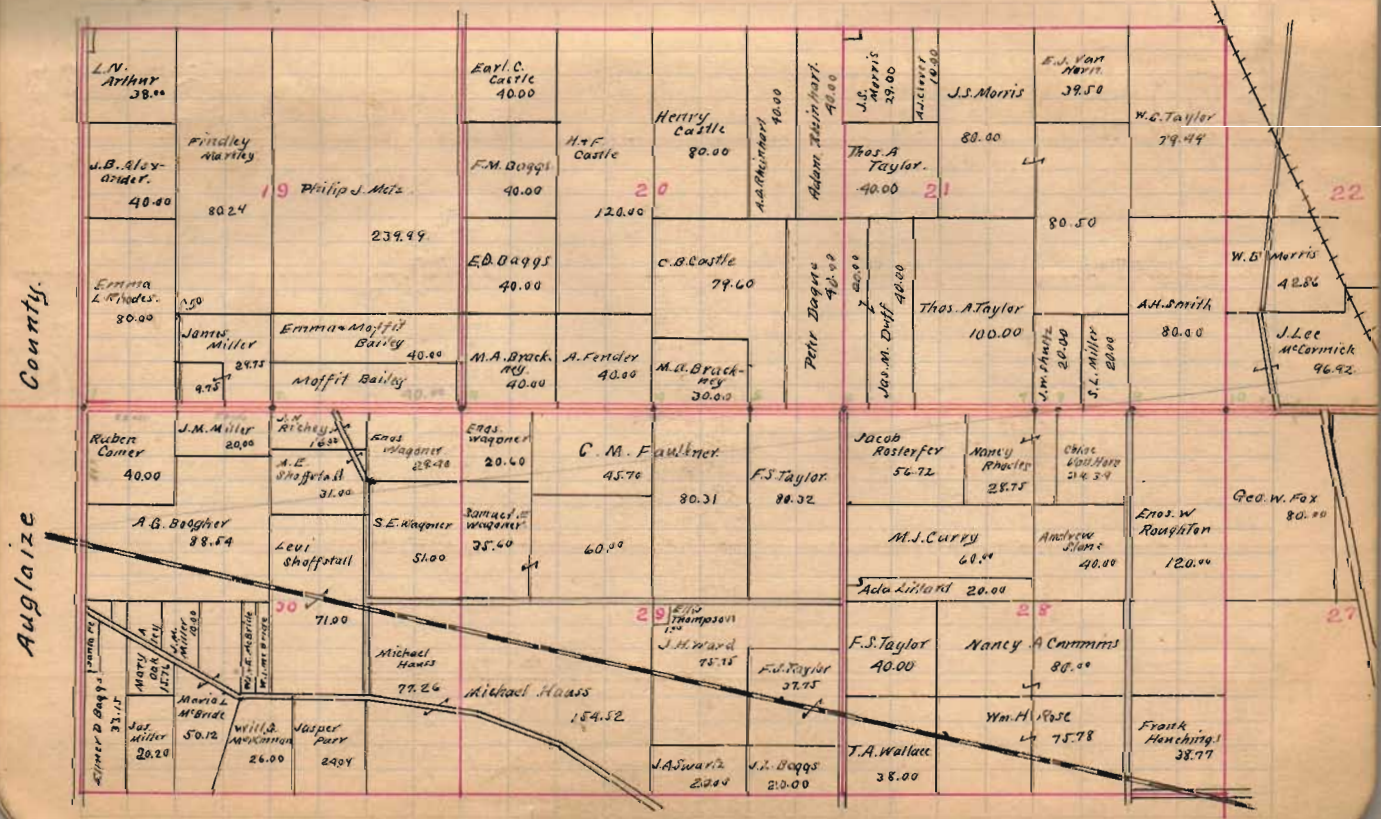


- 1 Stone with angle 15° 20' E 120° 15' N 1118 feet
  - 2 Stone (same size as one in 1) 1200 feet
  - 3 Stone NW 1/4 Sec 28
  - 4 3 malle in bridge form 214 ft
  - 5 Stone with broken tile one
  - 6 Stone N.E. & S.E. 28. 31-4' 28' 50' long from post
  - 7 lime stone at the section. (27' x 12' dimensions only)
  - 8 low pipe or obstruction of bridge NW 1/4 Sec 28
  - 9 lime stone 16' long. middle of E. side road 2' high from
  - 10 One stone with mortar base inside. N.E. Sec 28.
- 5' Old stone 7' x 4' of all from line  
 19-4' 4' 1/2' of same from post  
 20-6' 11' 1/2' of old from post.  
 21-1' 10' 1/2' of old from post.  
 22-1' 10' 1/2' of old from post.  
 23-1' 10' 1/2' of old from post.  
 24-1' 10' 1/2' of old from post.  
 25-1' 10' 1/2' of old from post.



County.

Auglaize



# Road 87 Stephens Trip

0	N 89° 1/2 W	S.S. 20' R	Aug 18
16+80.5	at Cornwell-South	For - Hwy 18	
120+11	Swick - Miller	Wagon - Cornwell	
26+76.5	Miller - Swick		
33+91.8	Shelly + Taylor	Dip 0° 2' R	Dip 0° 2' R
31+96		Wagon - Rhoads	
41+39		Rhoads & Swick	
50+06	Taylor + Shelly		
60+05.5	Duffy - Swick	Wagon - Taylor	Dip 0° 2' R
	Sh. 47' 1/2	Wagon - Taylor	
68+22	Diagnose on SW		
73+40	Coast of Swick	Taylor + Swick	
86+52	Swick - Taylor	Taylor + Swick	
99+77	Swick - Taylor		
109+94.5		For - Swick	Dip 0° 18' L
113+05.5	Swick - Taylor	Wagon - Swick	
125+55	Ant. Aug. 10-10'	SW 25' N 5'	
126+23	Open SW 25'	Wagon - Swick	
126+91	Ant. Aug. 10-10'	Wagon - Swick	
137+00	2 m. N. W. of Hwy 18		
139+49.2	Body - Miller	Rhoads + Miller	Dip 0° 4' L
152+76	Miller + Rhoads	Miller + Swick	
165+77	6 m. N. W.		
105+98	Ant. Aug. 10-10'	Wagon - Swick	Dip 0° 2' R

May 199-18, 1915  
John Bucher