

Anglaise & Logan Co. Line Road View  
 Road 16 Stokes Feb. 8 1914.

Anglaise Daniel Hull.  
 Elmer Thrush  
 E. S. Lusk.

} Viewers.

Logan A. B. Hover  
 J. M. Garling  
 F. L. Mohr.

The above Viewers were duly Sworn  
 by me on the above date.

E. H. Bushong.  
 Surveyor Logan Co.

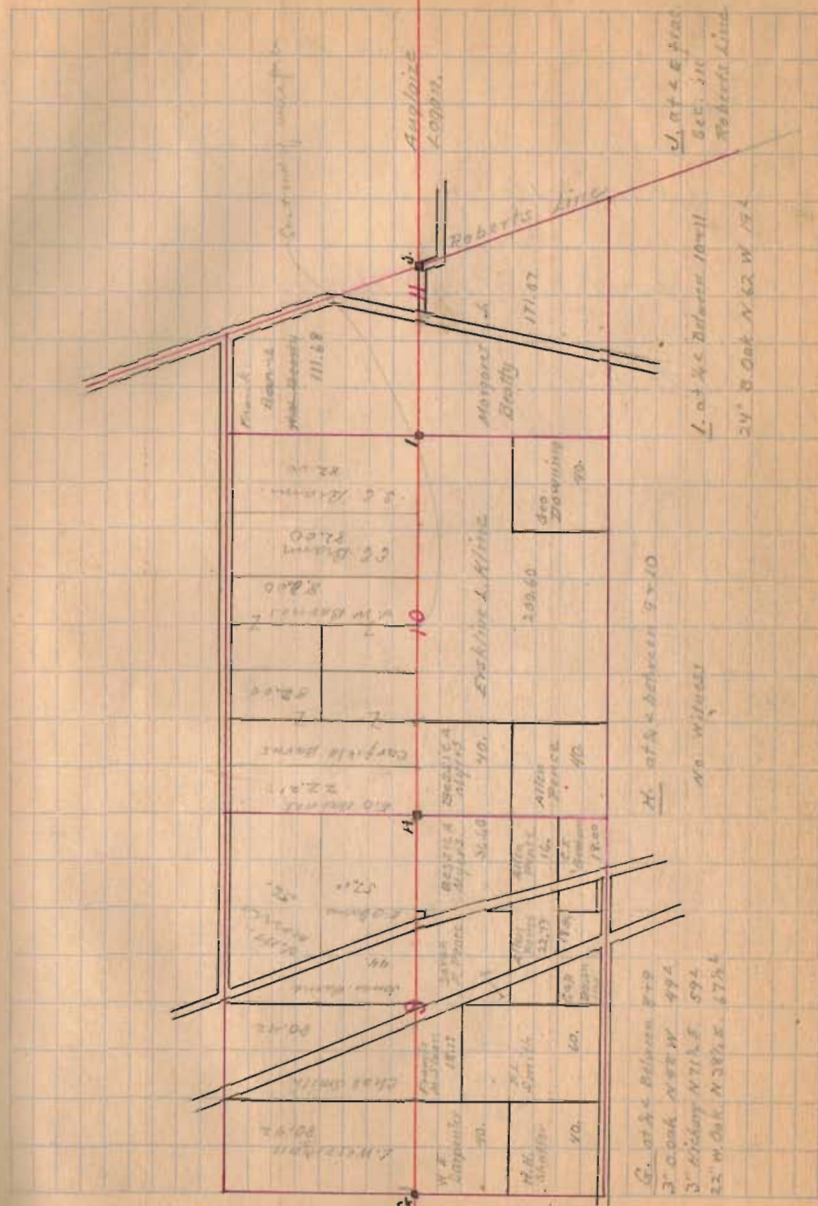
Road granted as petitioned for, on  
 the County Line and to be 40' wide.

Adj. to meet at Surveyors office  
 in Bellefontaine Feb. 21, 1914.

(see Road Record 3 Page 395)

1789

INDEXED ON MAP



Feb. 18 1914.

Avery Haines }  
W. H. L. Jackson } Chairmen

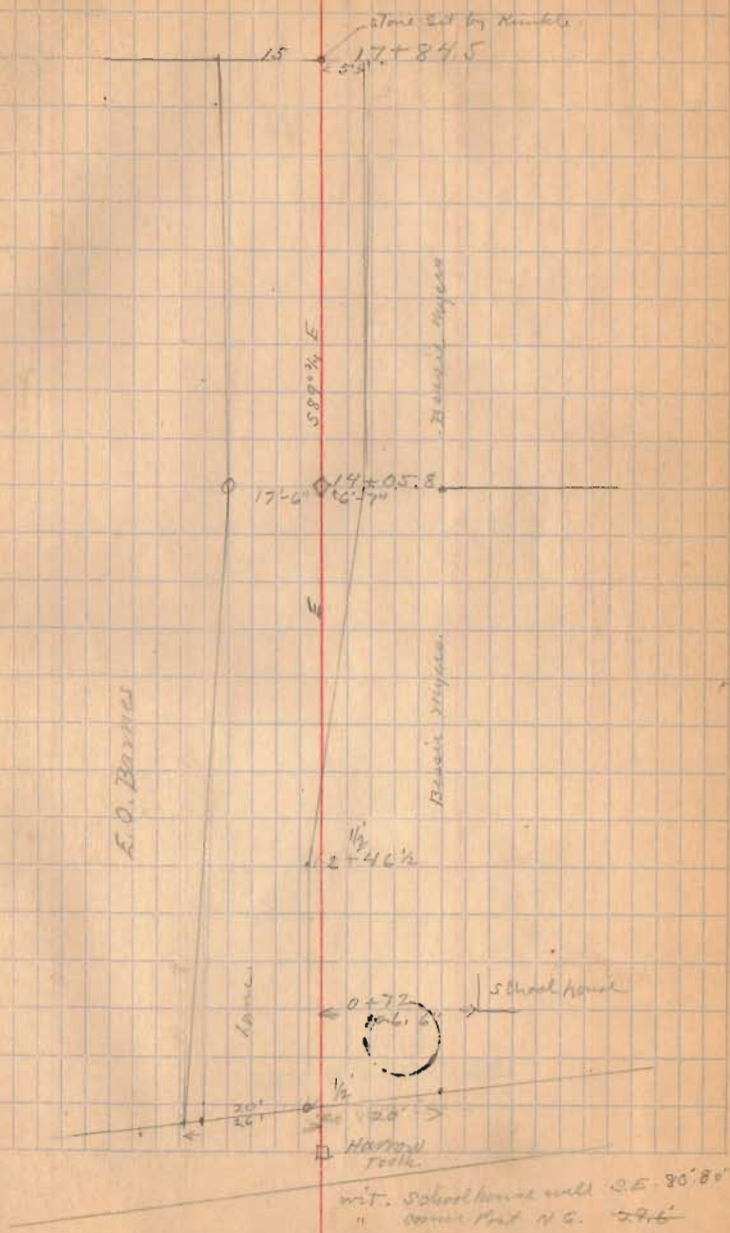
Jacob Timmons Marker.

G. A. McGee Axman.

1799

INDEXED ON MAP

3



S.W. Corner

21+39.2  
21.8'

58+24.5

Barbier Elin

21.8 27+33

Corfield Barns

Barbier Myrtle

15 17+34.5

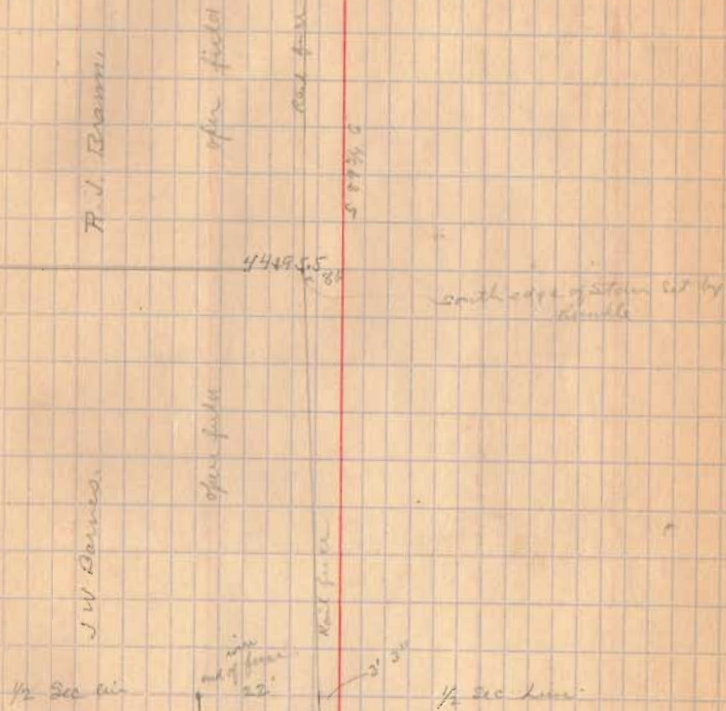
5'

1799

INDEXED ON MAP

1799

INDEXED ON MAP



1799

INDEXED ON MAP

S. E. Brown

Euler's Law

61+90

50

70

Boundary

F. ...

58934.5

58+45.5

4"

stone set by Runkle

Runkle's

R. L. Brown

structure

Coke

22 1/2

22 1/2

53+85 center of N.G. 4000

67+23.4 Sec. 1

67+00

Stone ... 5' x 4' 0"

1799

INDEXED ON MAP

N 38° E

82+00 Oroad. End

81+82.7m - of fence

Front Boundary

588 1/2'

72+02.8

Sub Boundary

m. Boundary

82+1