

O'CONNOR ROAD # 254  
Richland Twp.

Notz 5' base taken from Lots  
71-70-69-68-67-66-65-  
V.M.S. Line being  $\frac{1}{2}$  of Road  
and 20' from lots as laid out.

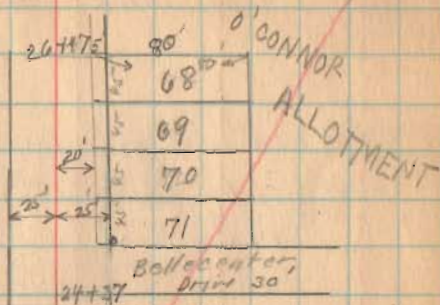
{ See BOOK 560 for  
Change in Road.

1344  
INDEXED ON MAP

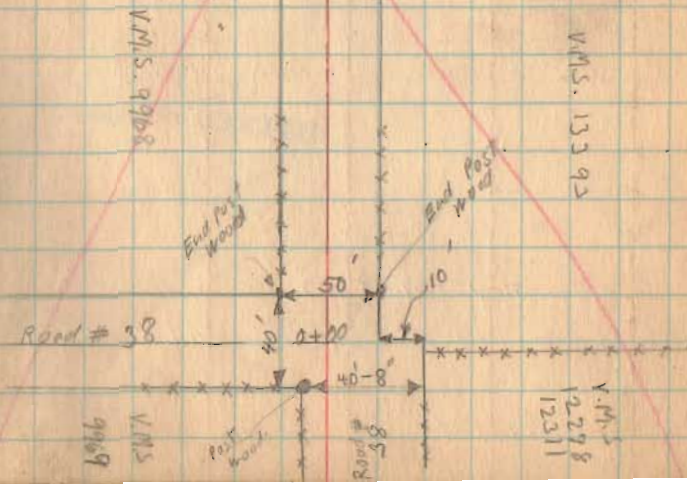
0+00  $\frac{1}{2}$  Road #

April - 18 7929

Wright  
McKinnon  
Antoine  
Wickersham



O'Connor.  
20+30 X X X X X X X  
Williams



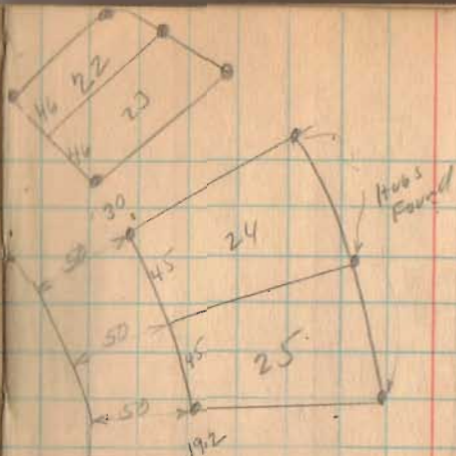
O'CONNOR Road

Measured 50' from Lot Lines of  
Marysville Allotment.

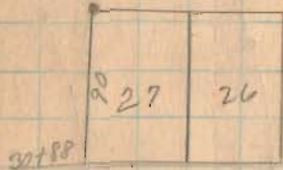
I have shown lot corners found.

1344  
**INDEXED ON MAP**

Lots 71-90-89-68-67-66-65-1-2-3  
are in O'Connor's Allotment.  
Other lots are in Marysville  
Allotment.



See Book 580  
Page 36 for  
change in  
road.

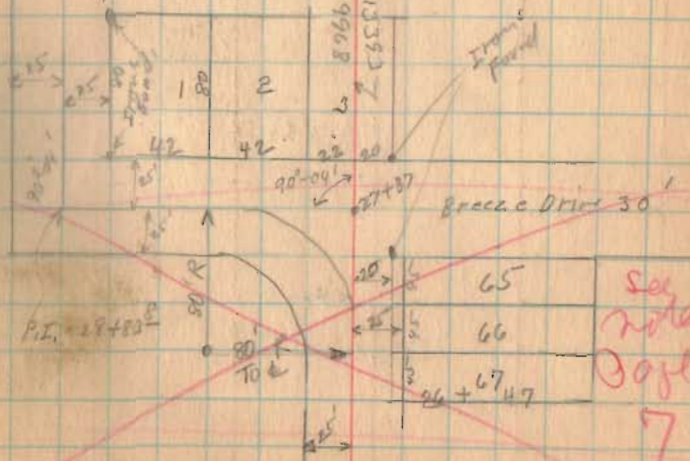


Toms Road 30'



# Road Station 13553  
# Road N.W.M. 9968

$$\begin{aligned}\Delta &= 90^{\circ}-04' \\ P.I. &= 27+87 \\ P.C. &= 27+07 \\ P.T. &= 28+32E \\ R &= 80' \\ \text{Length on A.V.C.} &= 125.76 \\ T &= 80'\end{aligned}$$

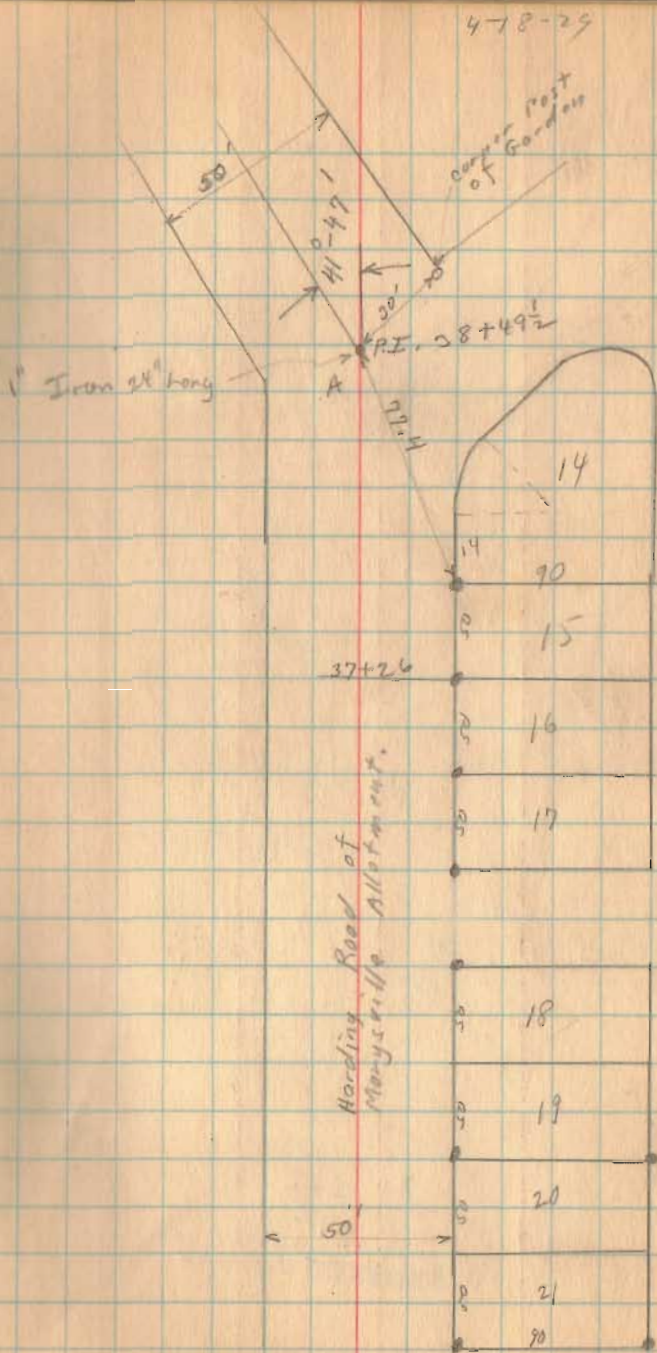


See  
note  
Page  
7

O'CONNOR ROAD

4.

1344  
INDEXED ON MAP



O'CONNOR ROAD.

$$P.I. = 41+64$$

$$\Delta = 84^{\circ}-50'$$

$$D = 50^{\circ}$$

$$T = 108.10$$

$$R = 118.31$$

$$L = 169.67$$

$$P.C. = 40+55^{20}$$

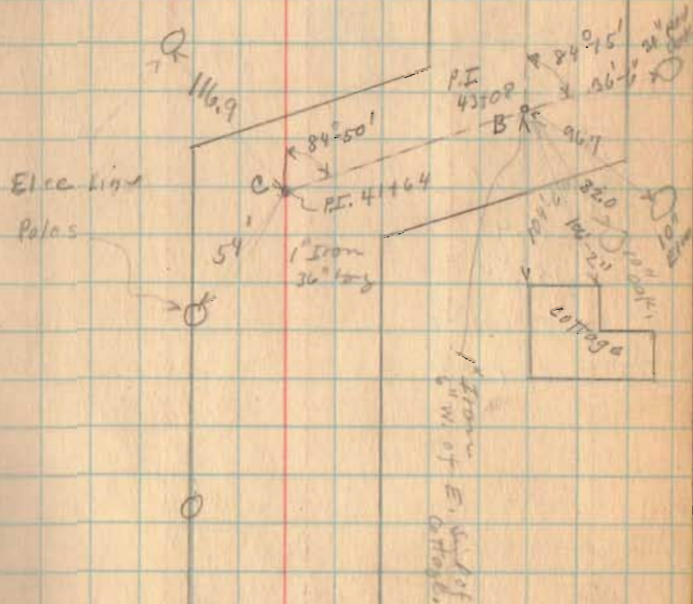
$$P.T. = 42+25^{60} \text{ Also P.C.C.}$$

1344  
INDEXED ON MAP

4-18-29

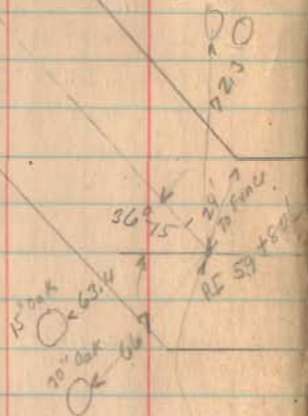
10

$$\begin{aligned} P.I. &= 43+08 \\ \Delta &= 84^{\circ}-15' \\ T &= 82^{40} \\ R &= T \cot \frac{\Delta}{2} \\ R &= 96.1 \\ \text{Length on Arc} &= 121.2 \\ P.C. &= 42+25^{60} \\ P.T. &= 43+46^{00} \end{aligned}$$



O'CONNOR ROAD #254

$PI = 59+80\frac{1}{2}$   
 $\Delta = 36^{\circ}-15'$   
 $D = 24'$   
 $T = 78.71$   
 $R = 240.49$   
 $L = 151.04$   
 $PC = 59+21\frac{80}{100}$   
 $P.T. = 60+52\frac{80}{100}$



$1 \times 5'$  Iron Stake  
 Long  $\frac{80}{100}$  Stake.

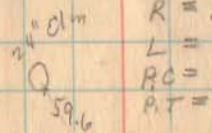
1344

INDEXED ON MAP

4-18-29

11

$PI = 52+50\frac{1}{2}$   
 $\Delta = 89^{\circ}-15'$   
 $D = 40'$   
 $T = 144.25$   
 $R = 146.19$   
 $L = 222.2$   
 $PC = 51+14\frac{2}{100}$   
 $P.T. = 53+37\frac{4}{100}$



PI 51+14 2/100

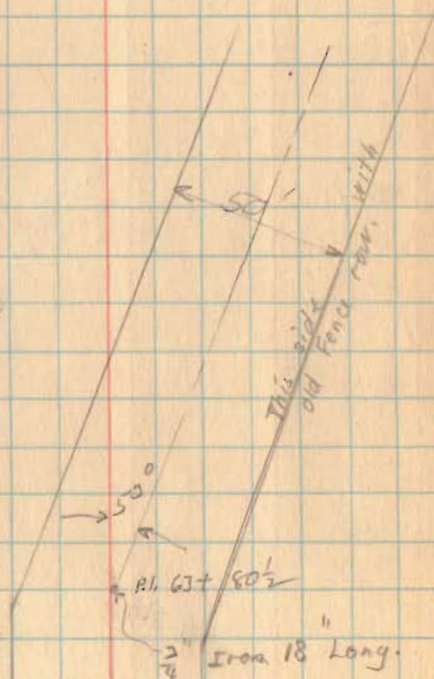
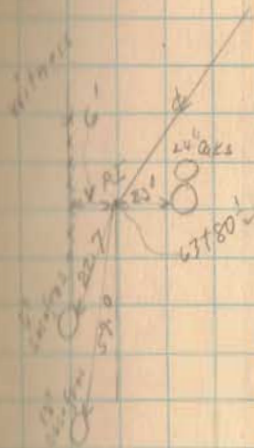
$1''$  Square Iron  
 $\frac{80}{100}$  Stake

$50\frac{1}{2}$   
 $PI$   
 $9/16$

O'CONNOR ROAD

4-18-29

12



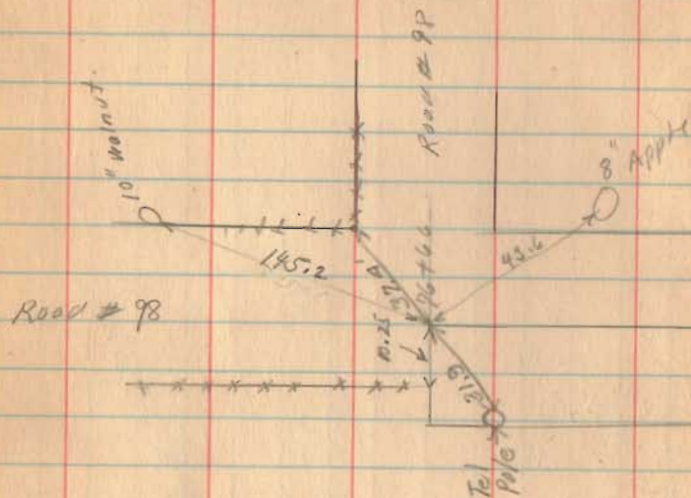
- AC = 67+80 1/2
- A = 53°
- B = 30°
- T = 95.29
- R = 171.11
- L = 176.67
- AC = 62+85.2
- AT = 64+66.9

1344  
INDEXED ON MAP

4-18-29

10

O'CONNOR ROAD



$$R1 = 72+34$$

$$\Delta = 89^{\circ}30'$$

$$D = 40^{\circ}$$

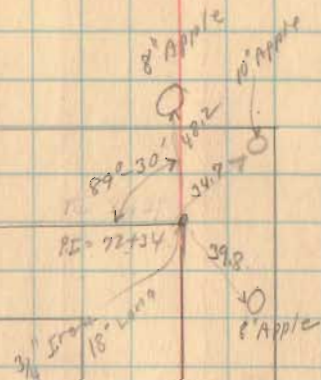
$$T = 144.92$$

$$R = 146.17$$

$$L = 223.7$$

$$P.C. = 70+89.10$$

$$P.T. = 73+12.50$$



2 Story  
Stone  
Foundation

← 12.7 →  
70+47

50'

This line with old  
feels line

1344  
INDEXED ON MAP