

April
22325²
J.C. Crino 2 48 8 8
W.A. Montgomery 2 48 8 8

Milo Pichey 4.8 1 1/2
Arthur Ranick 8 8 8 3
Carl Wynn 8 + dinner 35⁺
Stakes 35⁺

Washington St from NW
Cor 431.5

West line 909.5

South line 659.5

Jo 1.75.5

Ludlow 560.0

North side 1149.0

Ludlow Line at Bridge



S 12 1/4 E

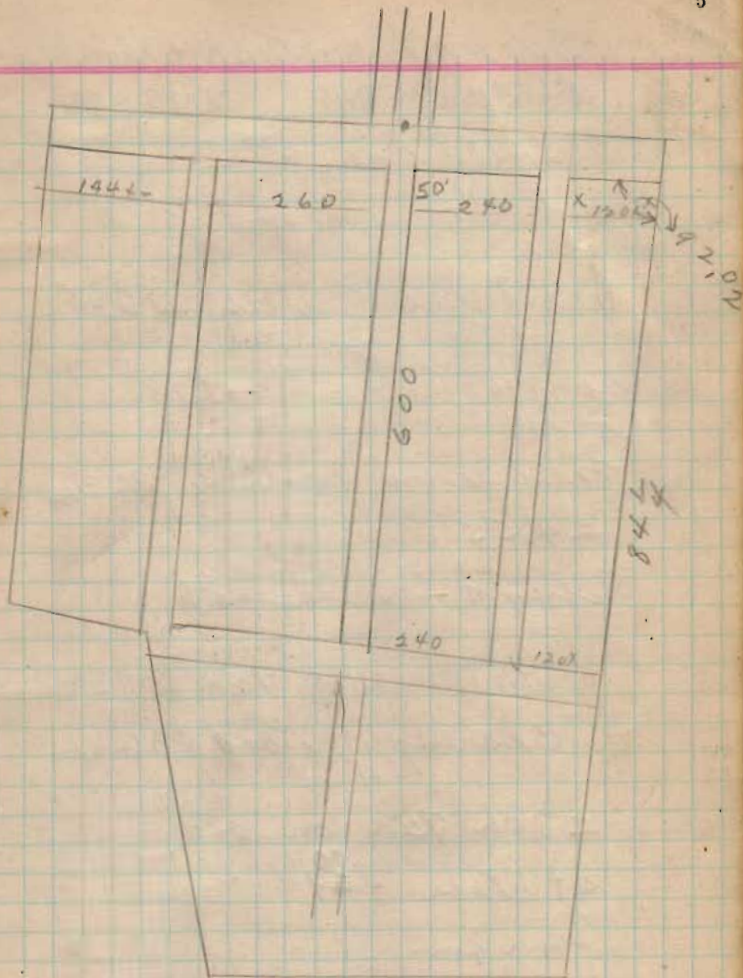
Ludlow line at North Line
of Addition 12.8' from
east edge of retaining wall

7 angle at WNW Cor

92° 02'

angle at Ludlow and N—

108.15



Survey for Shick & Hughes

M^cARTHUR TWP VMS 9881

South line 6.725

approx 711 6725

West line of Shick S6W

from @ L 414 pole 17.18 ch

measured West side of 34 ans
24.55

found One stone 6.89

South line of Shick S83W

Bearing of Road N36W

28 ch 75d on old
Set stakes ~~429~~³⁰ ch from
Iron pin..

n line Shick N80W

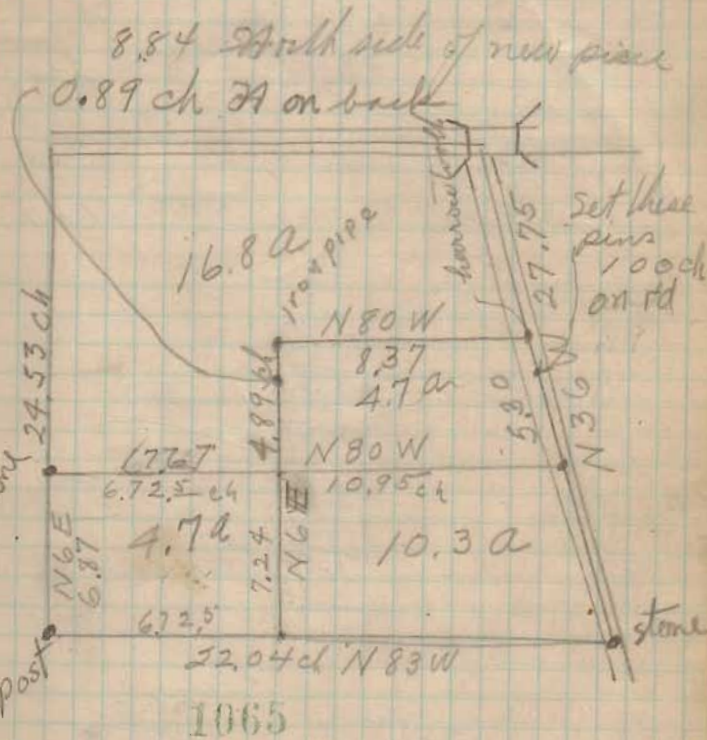
10.95 length to corner

7.24 line of West

April 16 1921 ⁶⁸⁹ 9881

10.95
16.72
17.67

Hughes } ch
Shick }



INDEXED ON MAP

263
281
545

May 7 1921

245
2
890

39.25
35.26
3.99

5145

2463

040

35.92
66
35.26
37.67
35.26
2.41
89
1.52
75
77

35.92

36.00
35.26
545) 1740
545
1950
1635
3150
3365

35.92
35.26
39.25
3.65
2.41
78
26
336

Lee, M. Cormick

F.S.	Elev	BM	2 nd Elev
388	40.00	BM	2 nd Elev
4388	7.96	35.92	Top Tile
6.00	37.88		Hub
4.63	39.25		Hub
4.95	38.93		2 nd Elev Hub
5.21	38.67		Water
6.21	37.67		bottom



Curve = 0.6" External.

$$\begin{array}{r} 1097 \\ 100 \\ \hline 109.7 \\ 219.4 \end{array}$$

$$\begin{array}{r} 24 \text{ min} \\ 24 \\ \hline 48 \\ 24 \\ \hline 120 = 42 \quad 10 \quad 12' \\ 120 \\ \hline 120 \\ 100 \quad 2 \quad 10.36 \\ \hline 200 \quad 3 \quad 73.08 \\ 240 \quad 24 \\ \hline 1113 \quad \text{Total def} = \\ 37 \end{array}$$

$$\begin{array}{r} 1097 \\ 222 \\ \hline 575 \\ 2794 \end{array}$$

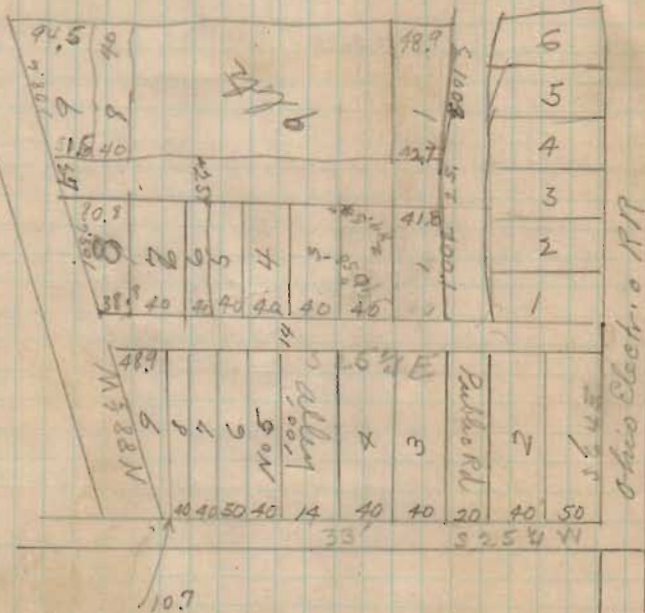
$$\begin{array}{r} 100 = 1^{\circ}00'' \\ 155 = 1^{\circ}15'' \\ 225 = 2^{\circ}15'' \end{array}$$

$$\begin{array}{r} 38.2 \\ 14 \\ \hline 16.29 \\ 38.2 \\ \hline 53.49 \end{array}$$

$$\begin{array}{r} N 85^{\circ} W \\ 15 \\ S 15^{\circ} W \\ 3 \\ N 75^{\circ} W \\ 15 \\ S 15^{\circ} W \\ 3 \\ N 85^{\circ} W \\ 15 \\ S 15^{\circ} W \\ 3 \end{array}$$

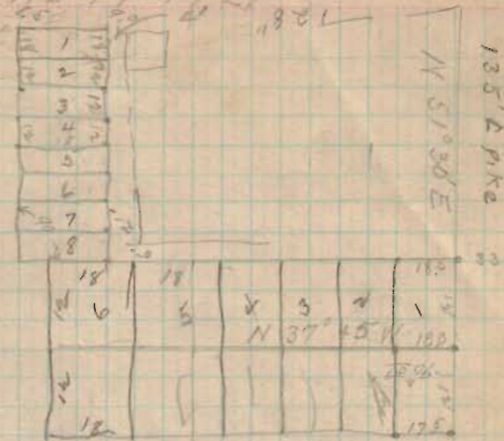
$$\begin{array}{r} 24 \\ 24 \\ \hline 48 \\ 24 \\ \hline 120 \\ 120 \\ \hline 240 \\ 24 \\ \hline 264 \end{array}$$

$$\frac{0.6}{100} = \frac{27'}{100}$$
 at Right angles



Zone Township Trust

June 17, 1921



Line A Random
from SW Cor of land

Surveyed Random 54° West

missed line 153 links
measured 26.82

measured North line 22.95

measured East line $N 5\frac{1}{2} E$

14th line of Alfred Williams

Crabbs 27.35 ch

Total Length 34.75
set stake at 23.37

measured South side

$S 84^{\circ} E$

$S 84\frac{3}{4} E$

$N 6\frac{1}{2} E$ 2535

$N 85\frac{3}{4} W$ 203

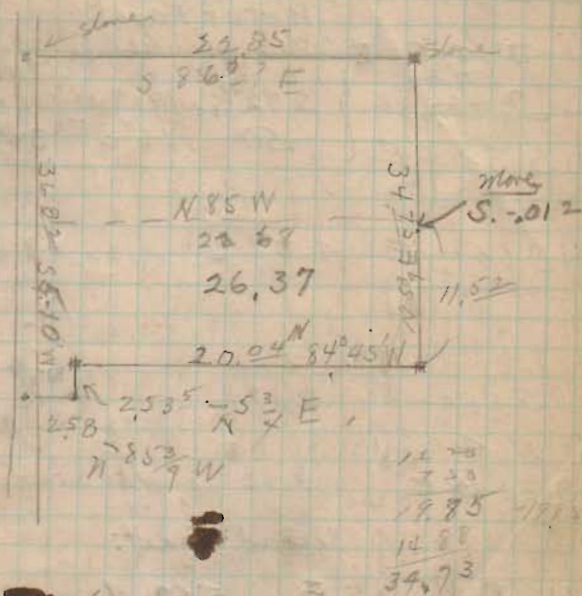
made at 1495 - a link or West

Sounding Line 85 W

22.68

Cherry Track

A.W. Elliott



260
3220
14.88
19.87
19.87

19.87
22.85
30
178.20
19.70

14.78
7.28
19.85
14.88
34.73

Survey of Wolf Island
Sec. 25 T. 6 R. 8 (Stakes Twp)

Begin at NW corner
Water Front

- (1) S $16^{\circ}30' W$ $36\frac{1}{2}$ timber $50^{\circ}30'$ corner
^{37.35}
- (2) S ~~44~~ $44^{\circ} W$ } $292\frac{1}{2}$ $199^{\circ} 00'$ 2nd course
150 $106^{\circ} 34'$ 3rd course
- (3) S $36^{\circ} 00' E$ 150

- (4) S $60\frac{1}{2}^{\circ} E$ $408\frac{1}{2}$ 155.79

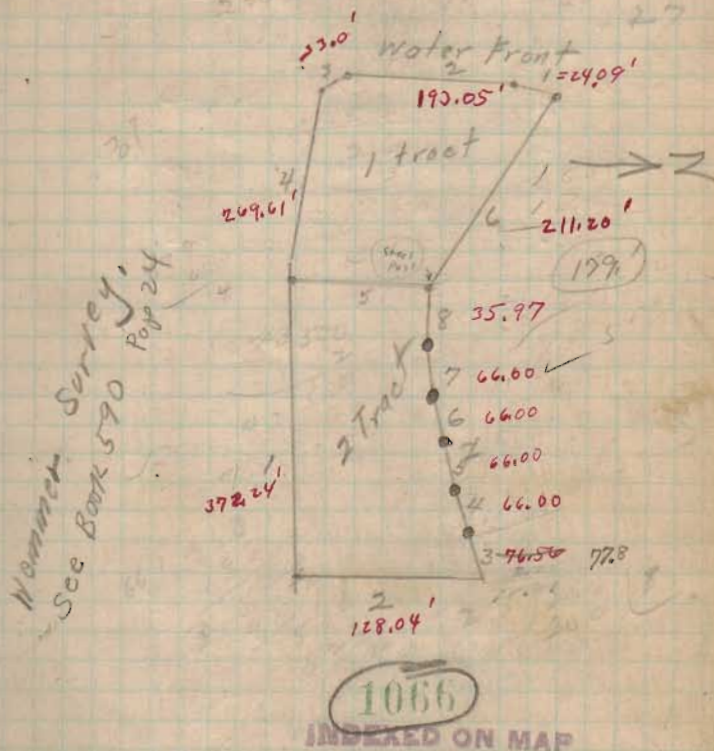
- Stake 2.39 55.55
(5) N $4^{\circ} W$ 3.20 $150^{\circ} 35'$
(6) S $33^{\circ} 15' E$

Second Tract.

- (1) N $84^{\circ} 35' E$ 5.62 ch 90°
(2) N $5^{\circ} W$ 1.94 ch
(3) S $78^{\circ} 10' W$ 1.16
(4) S $81^{\circ} 05' W$ 1.00
(5) S $85^{\circ} W$ 1.00
(6) N $85^{\circ} W$ 1.00
(7) N $79^{\circ} 20' W$ 1.00
(8) N $76^{\circ} 35' W$ $.54\frac{1}{2}$

July 18 1921
Water 2.3 below High Water

STAKES TWP SEC 25 T 6 R 8



Wagner Survey
See Book 590
Page 24

Survey for Shears.

Dist on Spring - 174.6 - 175.0

Dist on Hamilton 701.7 701.9

Dist on south alley 175.0 - 175.0

Dist. on Back alley 702.7 701.9

angle Hamilton + Spring $90^{\circ}02'$ Distance on alley back of Spring
174.6 - 175.0

Montgomery
Shears
Milo Richey

Lot 2205

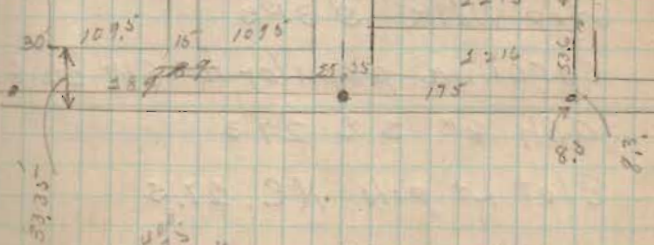
Aug - 13 1921

Spring - 175

1087

INDEXED ON MAP

25 35	50	50	50	15
	2203	2204	2205	
	2206	2207	2208	2209
	2210	2211	2212	2213
	2214	2215	2216	
				175



400
60
526
5136
25
538

701.7
511.6
168.1
50
18.1

Monuments

Hamilton + Colton

Iron pin

Hyd. NW - 405

Elect Lt pole NE - 17.0

S.W. Cor fda 2SF = NE 50.7

El 2+ stubb = SW - 244

Spring + Mad River

NE Cor riser lower step cement

S.W. 59.1 maple shade tree 4"

SW 41.2

Top Screw Hyd Sloping meas

NW 34.86

Cotton wood 28" NW 39'

Spring + Hamilton

Iron pin

Elect Lt pole SW 28.15

Bi Hom Mail Box Post SE 26.7

Top Screw Hyd N 21.75

Spring + Park

Cent of face of riser lower cement
step walk S 37.5

Carolina poplar 10" SW 22.6

Ash 8" SE 27.3

Elect Lt pole NE 27.5

measured. from stone on black line

17.25 ch.

24.85⁵ timber to sylvia line

39.112 ch. to stone.

39 - 3.7 ft

25 - 3.2

$$\begin{array}{r} 25 \quad 75 \\ 39 \overline{) 391125} \\ \underline{117} \\ 280 \\ \underline{78} \\ 56 \end{array}$$

$$\begin{array}{r} 39.112 \\ 24.851 \\ \hline 14.26 \\ 3.25 \\ 56 \end{array}$$

$$\frac{29}{39} \cdot 75 = 29$$

$$\begin{array}{r} 39 \overline{) 145} \quad (3.7 \\ \underline{117} \\ 280 \\ \underline{273} \\ 7 \end{array}$$

$$\frac{20}{39} \cdot 5 = 100$$

$$\frac{1.85}{14}$$

$$\begin{array}{r} 24.85 \\ 4 \\ \hline 12 \overline{) 28.85} \\ 14.43 \end{array}$$

9.4

39.11

24.85

$$\begin{array}{r} 35 \\ 39 \overline{) 14396} \\ \underline{32} \\ 64 \end{array}$$

$$5 \times \frac{3}{2} = \frac{15}{2} = 7.5$$

39

$$\begin{array}{r} 39 \overline{) 100} \\ \underline{78} \\ 220 \\ \underline{195} \\ 250 \end{array}$$

36.11

911

Forsythe Survey.

Line A. West line of piece run

with fence 18ft offset

(S 63° E)

N 4 3/4 W

at 10 ch set back to 16ft

at 20 set to 6ft to east

→ (78 ch 31 links) Missed

50.31 corner post 15 links East.

36 link from

Line B North line

stone at 22.24

S 85 1/2 E 33.13 1/2

29 links from
Tree

Line C. S 6° E

set stake at 54 ch.

(N 8° W)

50.45 ch.

Missed post to East. 17 links.

33 links South of post.

Line D. N 85 1/4 E

32.59 links

1068

INDEXED ON MAP

Aug 23, 1921

55 47

A W Elliott

John Forsythe

Andy George.

W D Montgomery

East End	25	-	7.8	Links
" "	20	-	6.2	
iron pile S.E. cor			9.3	
granit stone S.W. 42 links			22.24	
Bridge East 114			13.26	
			35.49	

			48.31
			7.8
			11.725
			12.2
			13.0
			62
			10.100
			90
			40
			20
			18.25
			2.50
			27
			32.27
			6
			16
			43
			10.6
			10.0
			20

Mrs Alice Forsythe

Rush

Mrs Eva Forsythe.

Beth Carter O.

10 ch slake bearing S82W
 13 ch to slake set to north 17 ch

32.83 ch. 44 links from
 pond to S

8 1/2
 32.91 1/2 ch

Line North 3.50 ch.

Line northeast east end

N 70° E 2.75 ch

58 1/2 - 21 1/2

32.91
 8 1/2
 32.91

22
 50
 717
 22
 34
 34
 737
 75

32.91

13

19.91

35

99.55

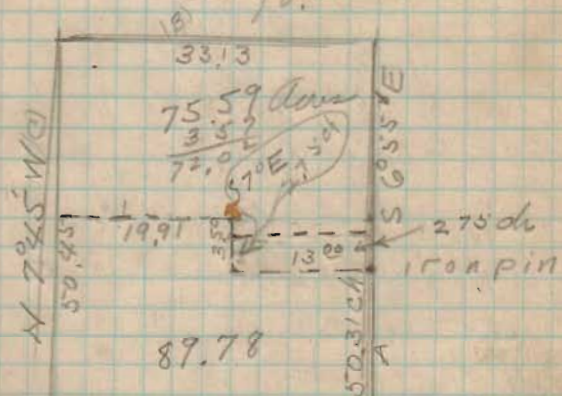
597.3

6968.5 acres

3.575

2.843

10.5



Measured from \odot of road West
to Cemetery East Line. 17.21 ch

Line A. S $6\frac{3}{4}^{\circ}$ E 1.95

Line B S $7\frac{1}{4}^{\circ}$ W 1.51 ch

Line C N 10° W 1.73

Line D N $63\frac{3}{4}^{\circ}$ E 1.68

Cemetery

Line A with fence $N 2\frac{3}{4}^{\circ} E$

2.06 $\frac{1}{2}$ ch

Line B 90° $S 87\frac{1}{4}^{\circ} E$

2.50 ch

Line C 90° $S 7\frac{1}{2}^{\circ} W$

4.95

Line D with a road $N 39^{\circ} W$

3.82

School lot.

Knight Survey

100
 125.25
 70.2
 53.75
 22
 1

20
 30
 220
 16.25
 30
 30
 506.5
 55
 35

358 to Center of house

70.2
 125.25
 355
 250
 177.50
 710
 287.50
 350
 31
 249.1

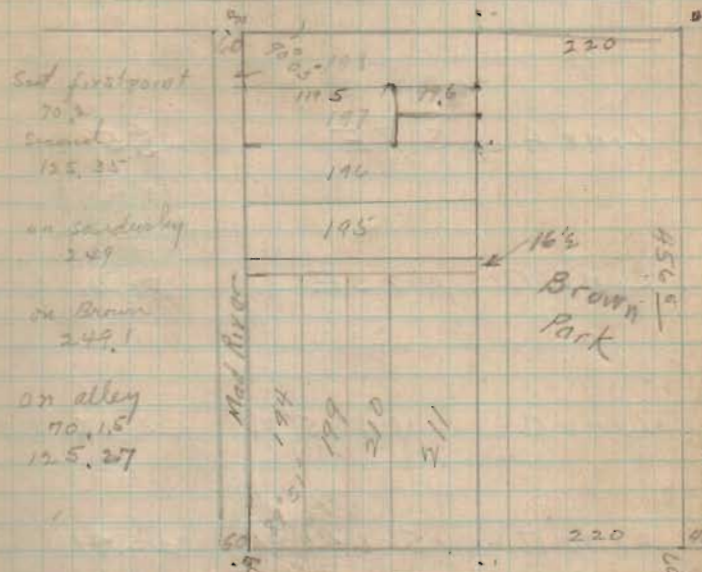
51.1
 32.8
 15
 149.5
 302.7
 501.9
 49
 502.7
 249
 240
 1022.47
 0.6
 306

(See Page 135)

19.5
 30
 49.0
 49.55
 49.15
 7
 30
 49
 49
 19

Belleft SEE PAGE 135

Brown Street



East firstpoint
 70.2
 second
 125.25
 on sandusky
 249
 on Brown
 249.1
 on alley
 70.15
 125.27

Sandusky

Lots - 55 X 220 alleys 16 1/2 ft

1069

INDEXED ON MAP

{ see Book 602 }
{ Page 7 }

Brown 40'
 Sandusky 60
 Mad River 60
 Park 40
 Man at Park + Sandusky 5' west of @
 Brown + Mad River 10's of @

Mad River	- 501.5	502.9	+ 1.4
Park	- 501.5	501.9	+ 0.4
Sandusky	501.5	499.5	- 2.0 ?
Brown	506.5	504.7	- 1.8
alley	501.5	502.6	+ 1.1

Shape survey.
Richland Township Survey 9987

Line A S 7 E 25.59 ch

Line B N 83 E 31.41 ch

Line C N 6° 5' W 33.52 (25)

Line D S ^{62 1/2} 44° W 22.71

Line E S 83 W 10.53 ch

Line from NE Cor to West Line
of Survey S 83 W 17.29 ch

Shape Line - Sept 24 1921
measured from W Survey line

17.29 ch

from stone to angle 10.53

17.29 line of Poundstone

Line

place lead tooth in place of rotten stone

stone south side of road and near
south fence

Praters Addition

From sec stone to South line of
Main addition 3.18²

South line

$$\begin{array}{r} 00145 \\ 320 \\ \hline 1000 \\ 235 \\ \hline 872.50 \end{array}$$

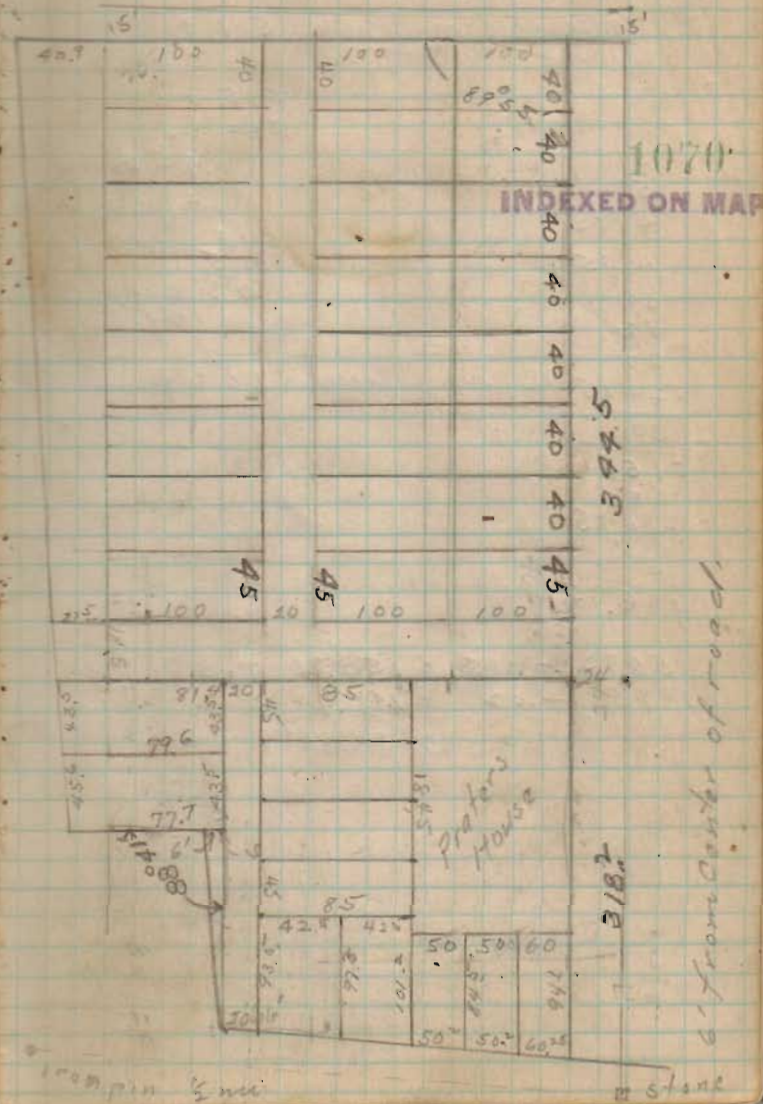
$$\begin{array}{r} 43 \\ 2410 \\ 32 \\ \hline 24 \end{array}$$

$$\begin{array}{r} 348 \\ 300 \\ \hline 75 \end{array}$$

$$\begin{array}{r} 348 \\ 348 \\ \hline 70 \end{array}$$

$$\begin{array}{r} 348 \\ 167 \end{array}$$

Russell Point
Sec 35 T6 R8



measured on Park

501.8

43.5

545.3

544.85

.45 excess

on park by dist

501.8

501.5

0.3

long by city
measured to

excess = 1.0 to Marshall

110° 2'

51

51

4875

4875

30

52

60

12485

30

51635

285

544.85

58.5

486.35

150.75 + 0.15 = 150.90 W. side of lot

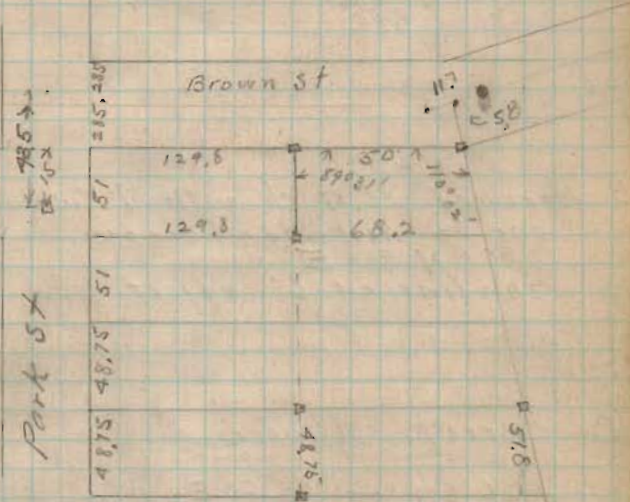
199.5 + 0.2 = 199.7 S. side of lot

Kin Miller Survey Ballft

Oct 29 1921

W.A. Montgomery

Avery Plains



from Brown

1071

INDEXED ON MAP

A Cont. at man measure from
H & B pike 18.74 to line of
McKinnon N $7\frac{3}{4}$ W

B Measured 36.87 ch with McKinnons
line to West side of creek.
N 88° E
this line at 6' offset.

C Creek Meanders

126 ch - S 60° E 4th

168 ch - N 68° E 3rd

212 ch S 65° E 2nd

497 ch S 34° E 1st

D 2.96 ch S $5\frac{1}{4}$ W 127 ch

127 ch
S $5\frac{1}{4}$ W
127 ch
S $5\frac{1}{4}$ W
127 ch

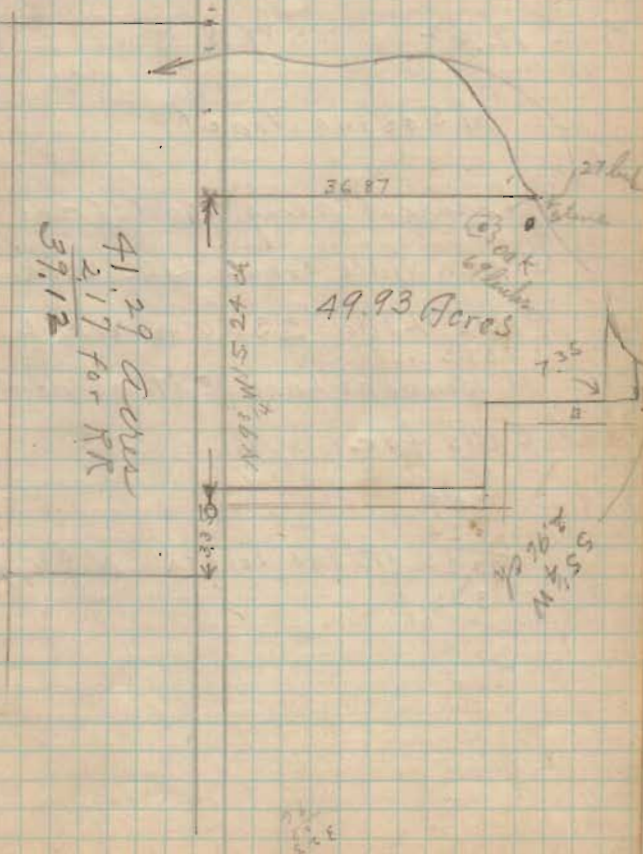
Anatine² Survey

HARRISON TWP

SEC 8 T 2 R 15

1972

INDEXED ON MAP



E S 80° W 7.35 links to a stone.

E₂ S 80° W 16.30

II 3.75 ch. S 6 1/2° W

F 17.62 S 89° W

M Second Tract

Measured along road from
Green Ville Treaty Line make

Cars Land 23.80 instead of
23.75

McKinnans Land 15.07 as deed

calls for.

150.9

15.24

30.33

3.35

33.68

Total length N 9 3/4° W

Line B 118 1/2 to O track

48 1/2 links from RR fence

N 84° W

Line C turned Angle 103.30°

15 ch + jog. in fence line

76 links

33.99 ch

Line D with fence 12.533

S 86 3/4° E

Washington T_p line

- A Begun at stone 6 North of
center of road from Russel
point to Lakeview upper
slough road.
Measured N 40 chains crossing
concrete wall at Bend Grocery
at 19.95 marked on wall

- B Begun at Concrete Road at
70.07 ch from SE Cor of
Section 1 113' N W from
West Side of Concrete Box
57' North of Cotton wood
tree spid tree being line tree
of Section
Ran North N 3 $\frac{1}{4}$ ° E (2 $\frac{1}{2}$)

West side
set stake on Orchard Island
35 $\frac{1}{2}$ links S W of double thin tree
160 North of 20" Cotton wood
T_p Line on Orchard Islands 88 $\frac{1}{2}$ ° E

set stake 10' West of 12" cotton wood
on Fox Island Both on Island

set stakes on Lake Ridge

set stake on Main Land 6' south
of 24" Elm.

Missed stone Cair post 3 $\frac{1}{2}$ °

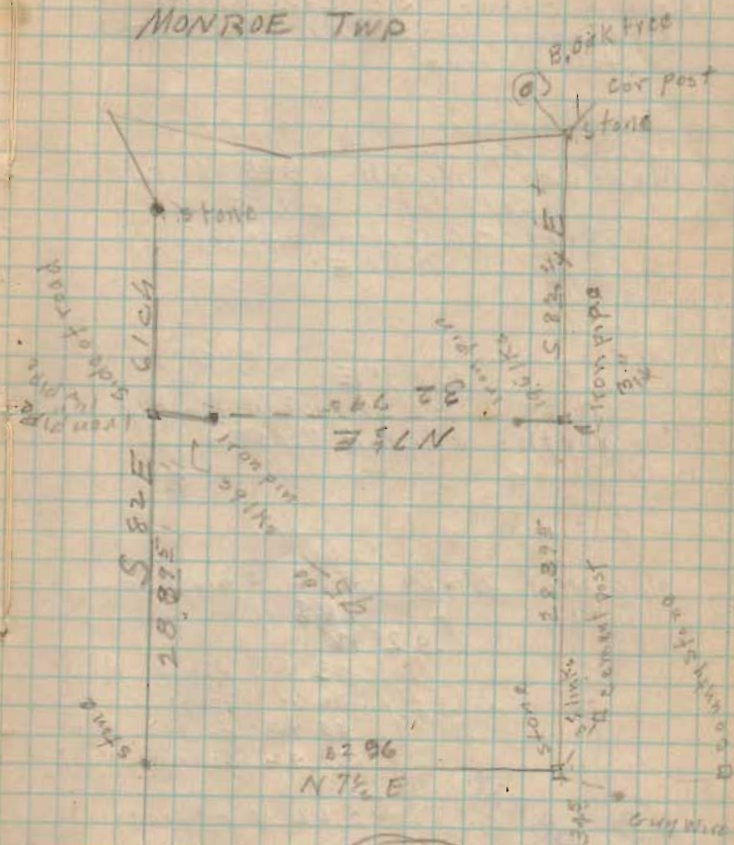
Platt Survey

Found stone NW Cor
 North Line S 82 E
 Measured 29⁰⁰ set point
 61 " " stone

Found stone at SE cor tract
 Witness 72" oak NE 75 1/2
 Fence Post SE 38 links

Found stone at SW cor
 16.38 ch N 7 1/2 E County Mon
 South Line S 82 1/2 E

Sec 21 T5 R13 Feb 24 1922⁷³
 MONROE TWP



1073
 INDEXED ON MAP

Orra Van Horn Sep 15

Found stone SE Cor Sect
 Measured West 20.15 ch. N 89 E N
 found stone

Measured North 969 ch rd
 set stake 29.75
 Total 9032 to Stone
 N 1 E

S 88° E
 2022 - division line on
 Northside 60.A Tract.

Measured North 836 Stone Corn
 788 N ..
 S 2° W

33.91 fence NW
 30.74 Stone
 40.40 fence East
 50.92 fence West

→ 2.66 N of fence

243
 INDEXED ON MAP

T6 R8

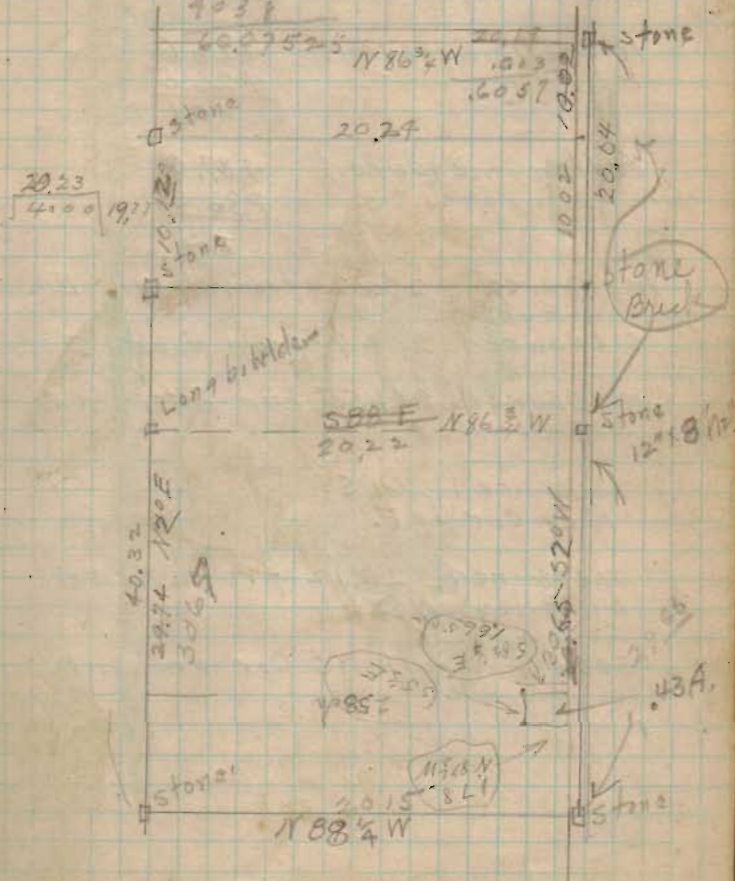
2014

March 9th 1922Orra Van Horn
Harley Line

40.32
 29.74
 16.58

2022
 250.37
 20.195
 29.75
 100.95
 141.33
 181.71
 90.38

2017.07000 10.03
 6057
 9432



Survey for James Crang

Auburn measured 487.8 ^{meas} 487.55
 PLAT 486.5
 + 1.3

Park measured 425.9
 PLOT 426.5
 - 0.6

Newell measured 426.6
 PLAT 426.5
 + 0.1

Alley measured 487.0
 Plat 486.5
 + 0.5

measured 120.32 from Newell West
 on Auburn

measured 204.7 from Auburn South

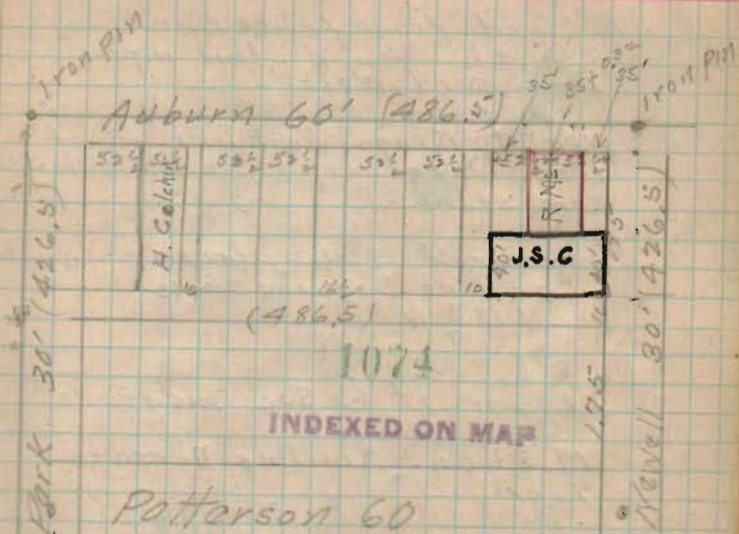
measured 221.55 from Patterson St.
 S E Cor lot

measured 261.55 " " "
 NE Cor lot.

measured 120.12 from Newell
 on Alley West

set on point NE Cor on Newell

April 5th 1922



Patterson 60

Park and Auburn Iron Pin
 top screw S.W. 25.6
 send iron in let 21.15 S.E.
 send iron " 21.15 N.E.
 N.E. Foundation 26 F S.W. 29.15

Park and Newell Iron pin
 top screw Hyd. S.W. 27.16
 send iron in let S.E. 21.0

Survey for Miss Mathe King

Measured from fence line East
93³/₄ ch. found stone 11 ft.
from \odot rd West.

Went to Kings West line found
stone measured 232⁵/₈ ch struck
same stone.

measured 3 ch placed stake
on line between stones
N 83³/₄ W

Began at \odot Sec measured

19.83 ch. Ran line North to
line.

14.73 Southside of Lane.

15⁰⁰ N

20.25 ch measured

N 6¹/₄ E

Measured 2 ch 583³/₄ E
to \odot rd

5 24³/₄ E 2 ch

14.63 southside lane
14.90 North " "
18.50²/₈ ch

5 7¹/₂ W

8²

N 81¹/₂ W 3.04 ch

Sec 35 5-13

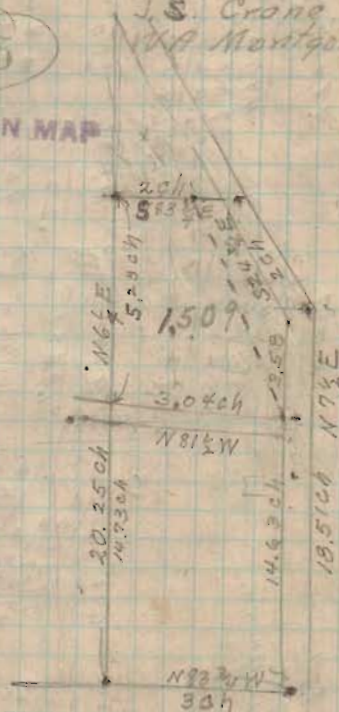
LIBERTY Twp April 11th 1922

J. S. Crane

W. A. Montgomery

1075

INDEXED ON MAP



stone

7

185
14.90
3.55

14.73
15.09
14.73
36.00
29.46
6.540

Moore

Random

19.29 to point of
measured 36.45 to fence north
East line of 135 acres

(Random) { 52.59 ch Cover + John Miller
S82° E - { 82.16 ch Total
+ 8"

N 7½ E 25 ch. 1 link

31 links to south rd fence
32 links to fence N

46.12 ch from Rd to
NE Cor. of 135 acre tract

N 86° E ~~30~~ 83.03 ch to a post.

Line hit N 23 links
or 11.18 links north of
B Miller's NE corner.

Sec 31 T2 R15

offset 15 links

offset 22½

moved this point south 23' 8"

Line C 5.16 N 63 $\frac{3}{4}$ E (Cor)
5.85 fence

Random midpoint 1.2 links
Line D N 85 W 20.50

measured as B Miller's line
376.76 to post.

S 6 W 25 links

11.33 B Miller - S line

29.35

31.05 links S 6 W

31.83 32.60 31.83
32.57 32.57 25.63
256.86
28.43

31.94 32.59 31.83
27.64 28.43 25.63
24.30 97.74
130.32 31.83
260.64 63.26
651.6 43.40
92.62 24.94
91.94
6.8
31.83
22.5
63.015

585
11.20
47.05
4/147.3
37.59

92
12
2/75
3.9

5.
3.1
1.2

4672
4571
2/9183
4591

3435

3441

26.33

2/5944

29.72

45.91

29.72

247.48

148.60

118.88

136.24 4.52

3441

23.83

938

2/18388

91.94

938

91.94

938

72552

27582

82746

135/ 8623972

6895

810

523

405

1189

1715

2503

20.52

31.21

2503

6385

31.915

25.03

2156.47

28.22

32.87

28.22

91.940

8466

7.270

5644

6.260

16260

14780

21560

384

Took fence line at "H" measured
West.
Marked 1929 ch
East line of 135 Acres at 36.45 ch
Cover + McKinnon at 52.59 ch
Total 82.16 ch
At B found some tile but stone
was gone

Random line 15 links South of Q
22 $\frac{1}{2}$ " " at B

S 82 $\frac{1}{2}$ E 45
True Bearing of line S 81 $^{\circ}$ 50' E

Line A-B Measured 24.96 ch
N 7 $\frac{1}{2}$ E

Line A-D = 83.03 to 23 links N of
Post N 86 $^{\circ}$ 05' E

A-C = 46.12 to post.

E-D = 11.18 ch
E-F = 5.16
E-M = 5.85 } N 6 $\frac{3}{4}$ E

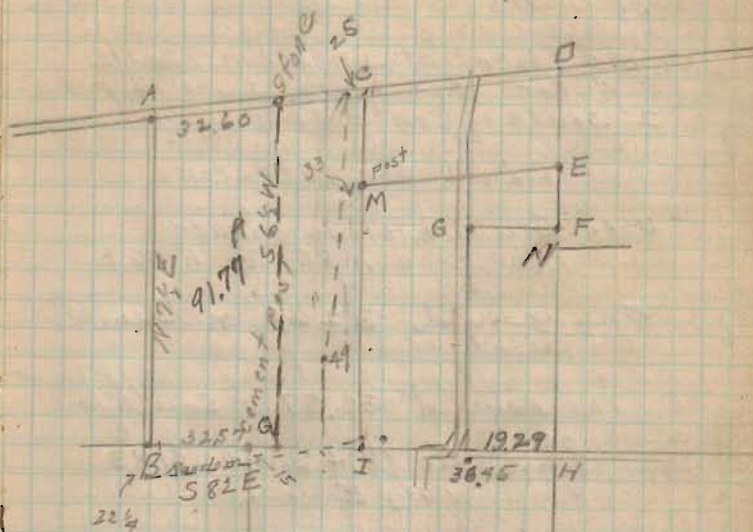
Line C-M = 11.33 ch

C-I = 34.35 to ditch

Random S 6 W

G-F = 10.49 to Ord N 85 W

WASHINGTON TWP



32.16
52.59
29.57
32.16
32.00

1076

INDEXED ON MAP

Found stone offset 12' - on road
by corners

Found stone at Johnathan Trouts
S W Cor 225 links south of post
2' south of center road

Did not use both stone

Used Bob Johnstone corner
and line tree N 85 E . N 86 E

measured 32.00 on Brewster's
Treaty

measured 32.57 on South line

found North + South 31.83
N 7 1/2 E

moved West .02

West
Sandusky & Everett
West C.I. Marker Center of West
and 5' south of center Sandusky
Top Screw Hyd NE 35.35

MW Cor fda 15° SE 51.6
NE Cor 15° SE SW 56.95

Top marker 10" below surface

Sandusky & Everett
see Record No 1 page 91 Pointon
Big 4 RR

Sand - Center Col & Everett S 526.4'

Center line produced to point
on Big 4 Ry near East side Everett
C.I. Marker, N edge of N rail Main
line Big 4 Ry S 5.7', Iron Post
Ry Signal Bell N of W 44.33'
Telephone pole N W 21.35

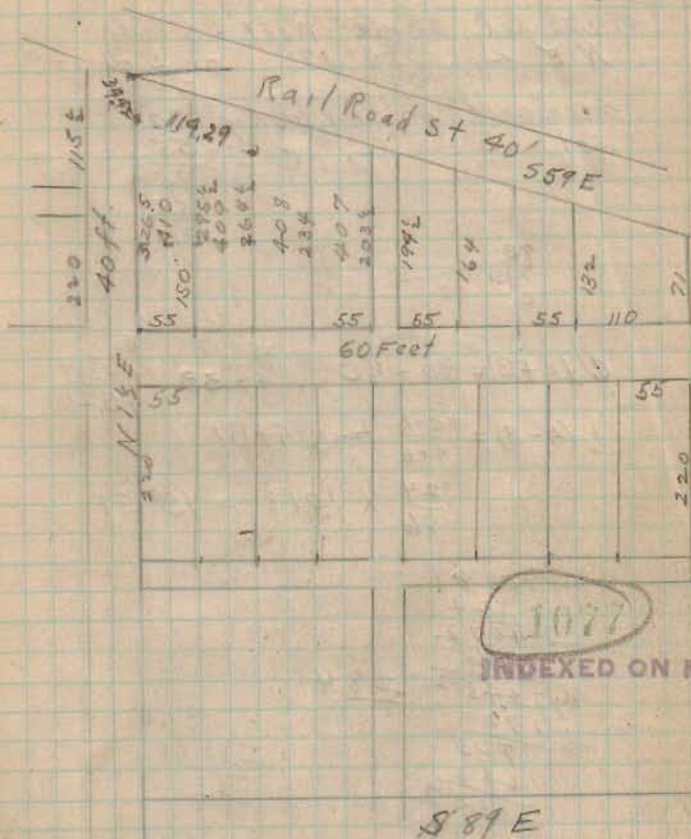
Garfield & West Iron pin
Top Screw Hyd NE 27.6
Water Valve Box NW 28.45
N.E. Cor fda 25° Res SW 36.2'
Telep pole SE 30.9
N.E. Cor Cement Spandrel wall Wand
Culvert S.W. 42' 0"
Maple 8° N.W. 58.9'

Everett

758.5'

West St

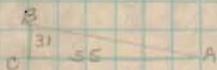
2645.91
3.1
230.1



measured angle West + Sand-
NE \angle $29^{\circ} 12'$ on 5' offset South

measured on sandusty 20'
set nails

55
75
55
130



$$\angle(AFB) = 90 - \angle C$$

49.17	90
44.39	44.39
	45.21

$$\frac{1}{2}(A-B) = \frac{a-b}{a+b} \tan \frac{1}{2}(A+B)$$

$$\frac{24}{86} \times 1018 = 150.51$$

1018
24
4072
2036
8024.732
172
723
688
352
344
80

31.3
283.60
283.71

A = 15.51	B = 45.21
45.21	45.51
60.72	29.30

20 \div Jan 61. 12

1819	20.00	(10.99
	1819.20	
	118100	
	16371	
	47.290	
	326.5	
	735	
	10.99	
	372.49	

8763	20	(22.82
------	----	--------

8763	55.000	(62.87
	52.578	
	24220	
	76526	
	76940	
	70109	
	168360	

101721
101170
691
101170
1.01761

set stakes on 1.90 and 1.80

turned $29^{\circ} 17'$ set side stake
East line $299.5 - .5 = 264.5$

West line $361.5 - .5 = 326.5$

Mauldin Survey

Found stone in O sidney pits
of 4 mi. Cor. 30' from side
stakes

Witness 15" Blun S.E. 30°

8' offset

measured 80.95 to a stone

20.15 to stone

N 7 E

measured 8' offset

20.49 found fence

measured 40.99 to fence line

Found stone at 1/2 Sec -

32 1/2 links N of cement pos

7' Cir. 29" Walnut N 30 E 461Ks

May 11, 1921

W.O. 15" S 55 1/2 E 321Ks

N 7 E

N 7 1/2 E

Brandon Survey

Iron pin

Madriver @ High Iron pin on bar corner
 Hyd SW 276' Face Curb N 15°
 N.W. Cor fda 1/2 S.F. Res. SE 59 95
 Stone Mad River North - 60.78

Brown + Main

S end iron inlet face curb NE
 24.95 S and iron inlet face curb
 NW 24.95 Stone fence post
 NE 42.8 Top Screw Hyd.
 NW 29.9

High + Main

Iron pin

SE Cor. Lawrence Stone Wall
 39.8'

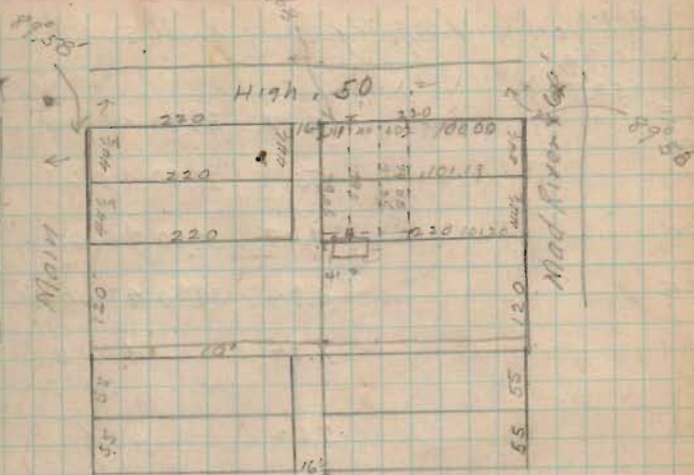
High 50'

Main 80'

Mad River 60'

502.1 - Brown to High on Main

369.5 mass - on Mad River



Mad River

Brown

High

Main

526.5

526.5

369.

369.2

529.2

521.7

369.2

Surplus

0.2

18

2.9

Born 8.2' from stake

1078

INDEXED ON MAP

B.M. on wild cherry.

Knote 50 92

NE	4.87	39.90	46.10
NW	5.31	37.90	45.63
SW	4.27	39.90	46.67
SE	3.94	39.90	47.00
Ed	1.84		49.10
Ch.	7.62		48.32
	9.54		42.40

6.20	5.25	10	46 1/2
5.73 ✓	4.57		3.5
6.77	4.76	2	7 1/2
7.10	5.90		9.50
	43.32		5.62
	5.62		48.94
	48.94		49.50
	4.3		8.62
			39.80

Peter Mulitor at
angle at NE cor 73.55

5 67.70
73.55
130.13
40.55

1079

INDEXED ON MAP

96
13
600
96

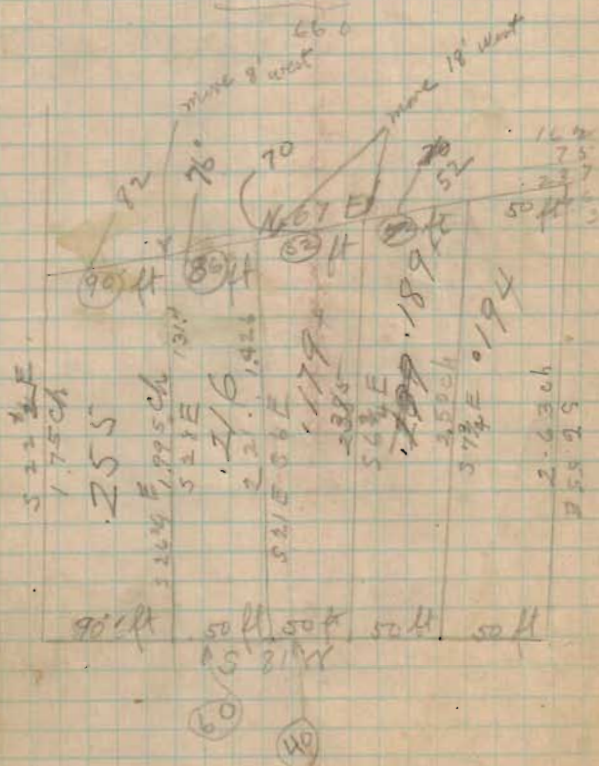
40
25
25
290.4

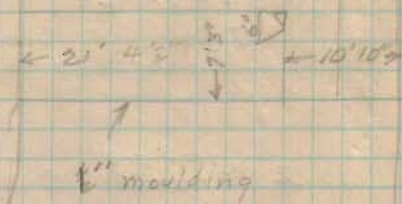
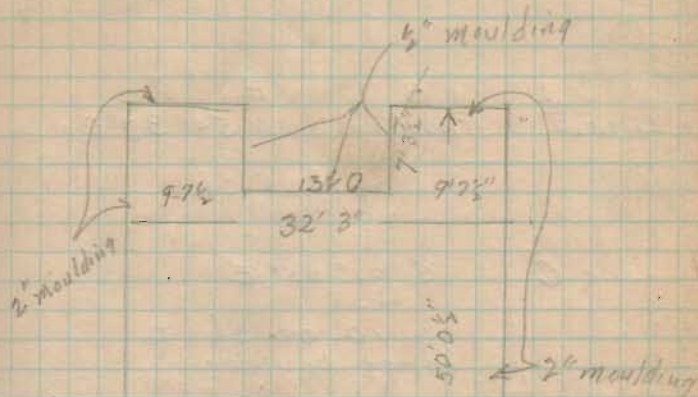


Cottonwood

- 1st 50 = 75 607
2nd 52° = 81 607
3rd 52° = 81 607
4 - 85° = 1ch 30° 25' lumber
5 - 90 = 1ch 35' lumber

240
86
16
20
35
43
505
90
50
20
100
25
84
10





Line A Beginning at stake M+Z
 p/te
 N 31° 20' W. 26.91

Line B Random N 54° 35' E missed stone & post 6"
 36.025 ch.

Line C S 31° 05' E
 10.00 ch to
 large boulder.

Line D N 54° 30' E
 7.60 no stone
 placed on a "wax" 12"

Line E 17.13 iron pin
~~7.60~~ S. 31° 05' E

Line G- 11.11 ch S 69° 15' W

Line H S $1\frac{3}{4}$ ° W Stone 9.345
Correct this 1/2 links to East

Line J S $38^{\circ}25'$ E 5.16 ch.

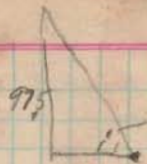
on 10' offset
S $52\frac{1}{2}$ ° W
Line K 4+90 fence
13+91 fence Teets
21.50

Line L N 65° W 12.45

Begin at corner K+L.
N $43\frac{1}{2}$ ° W 2.25 ch.

S $52\frac{1}{2}$ ° W 1.22

S 65° E 2.57



at Teets, corners

Missed post on same line
10 links West.

Oliver DeVal.
Sue 29 T.B. R 15

Found stone @ Rd SW cor
measured 19.67 to stone
N 5 E

measured 2.52 to stone
S 85 1/4 E

measured. 19.41 S 43 3/4 W

measured 2.54 S 86 W

June 29 1922

19.27
1271
66
611
574
INDEXED ON MAP
190
132
480

stone stone
9.75 2.52 post
19.67
N 5 E
4.74
10.91
S 86 W
RR 20
stone + stone
19.52 .03000 10.04
7808

19.67
19.44
2111
19.55
2.52
3910
9775
3910
7.92666

McCannell Survey

Found iron pin SE cor

69.5 ft
13.26 ft S 17 3/4 E

Post and stone

N 71 1/2 E 66 ft.

Post and stone

S 18° E 7.72 ft.

60° to fence

N 74 1/2 E 9.13 ft.

Random line 43 ft to West

N 17 1/4 W 12.19 fence

26.58 stone cor

N 44 1/4 E 11.05 along fence

N 45 E 10.80

division line

2000

66

150

150

150

150

150

150

150

150

150

150

150

150

150

150

150

150

150

150

150

150

150

150

150

150

150

150

150

150

150

150

150

150

150

150

150

150

150

150

150

150

150

150

150

150

150

150

150

150

150

150

150

150

150

150

150

150

150

150

11.67

66

6972

6972

7.6672

9.13

11.3

27.39

9.13

9.13

1031.69

12.43

26

69
1105

1.674

66

445

396

490

462

280

26

69

12

43

26

516

26

286

26

82

1198

Survey of Colored Cemetery

A S $16\frac{1}{2}$ W - 301 chB N $74\frac{3}{4}$ W. 4.65C N $20\frac{3}{4}$ - E 3.185D N $62\frac{1}{2}$ W - 2.84

Rothbarton

Aug. 12 1882

0 70 ft West of \odot RR 29' out
side stakes 15' to Right

1
+20 Hit second bank fill all on
south side

2

3

4

+75

54.81

4.27

0
Oken south of \odot

10.50

9.20

8.34

50.00 BM

4431-44.31

45.61

46.47

8.76

5.81

46.06

49.80

6.11

6.45

48.70

48.36

6.77

48.04

+75
13.10

7.56

41.71

47.25

Survey of Ben Plank

Plot Dist Auburn = 526.5
 527.7
 1.2

.15 to each lot

$90^{\circ} 13'$ $89^{\circ} 55'$ of M.A.

Plot Dist Main 736.5

Plot Dist Detroit 736.5

Plot Dist Buckingham 526.5

lot Cor. Auburn + Main

Aug 15 1922

S. end of curb	3.11
N. " " "	3.12
N. Walk	4.12
C. Walk	5.08
S.W. stake	4.27
Center stake	4.06

Kikus Survey

Found iron pin Wedge
 Found Iron Pin O to Rd 3.21 ch
 from S line of Campbell's 1 1/2
 S 81° E 3.98 ch deducted
 15 hats for shortage in Campbell's land
 set iron pin on line of NE cor
 of Campbell and on NE. Cor of
 Kikus piece.

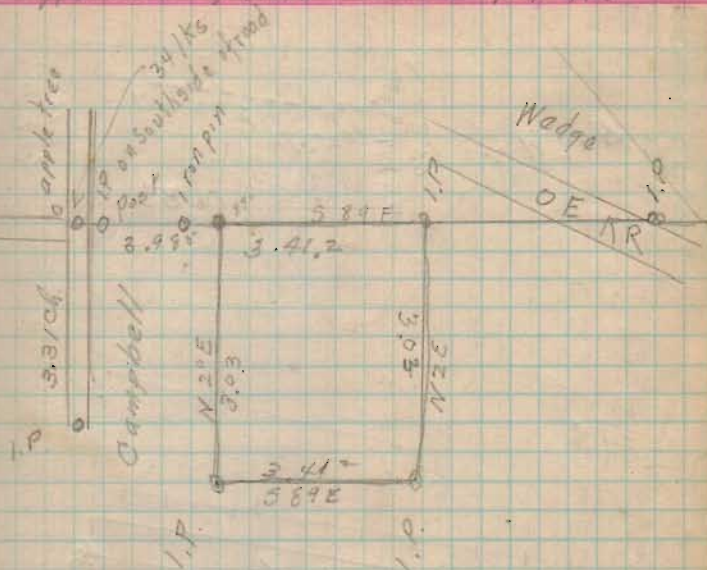
N 2° E 3.03 iron pin

S 89° E 3.41⁷

S 1 1/2 W 3.03

N 89° W 3.49^{41°} ch

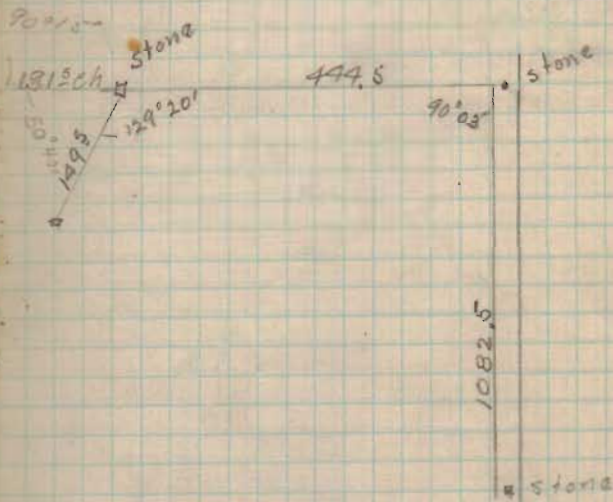
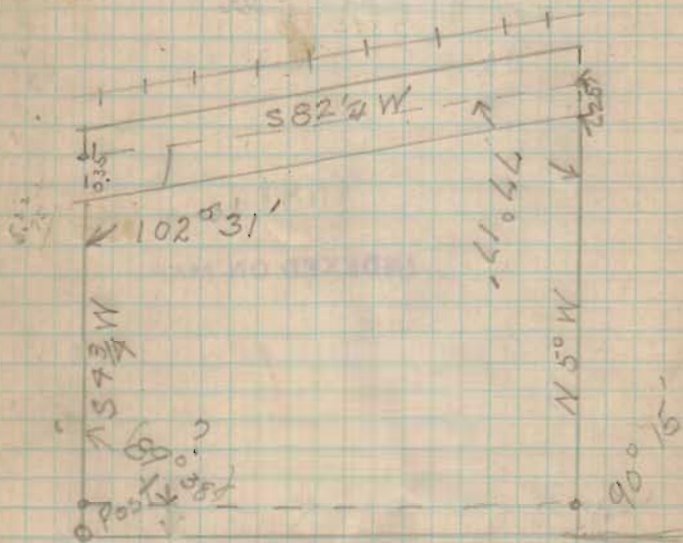
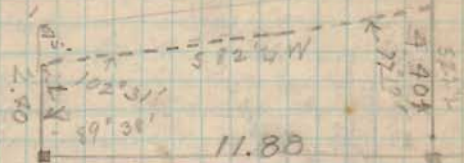
Russell Point Sec 1 T9 R8



1081

INDEXED ON MAP

54 1/2 W

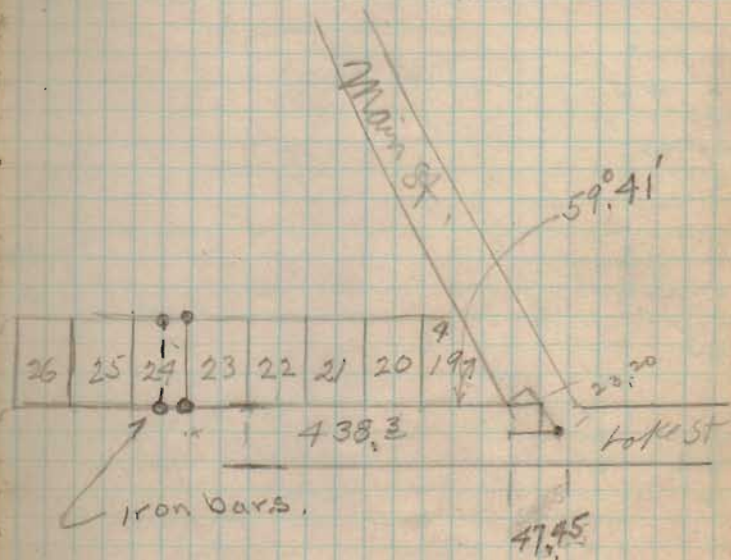


Tray South Iron pin old stone marked
 on top (probably in W. line of Sec 35
 N.E. 34.15 Top Sec. Hyd SW 32.9
 NW Cor 2 S.F. S.E. 61.7
 SE Cor stone da 2 S.F. W of N 61.3
 Elec light pole S.E. 28.7
 Iron pin cent Tray N = E 13.9

Chas Roach Lakewood

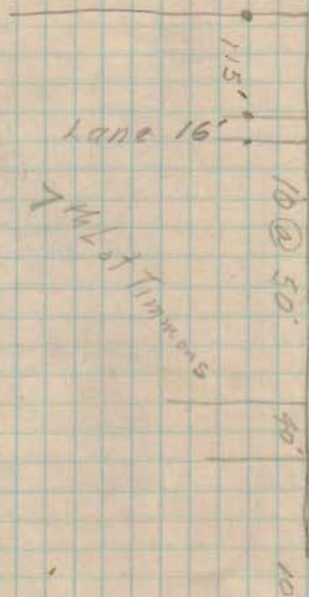
1082

INDEXED ON MAP



Harvey Funk

Ray Miller

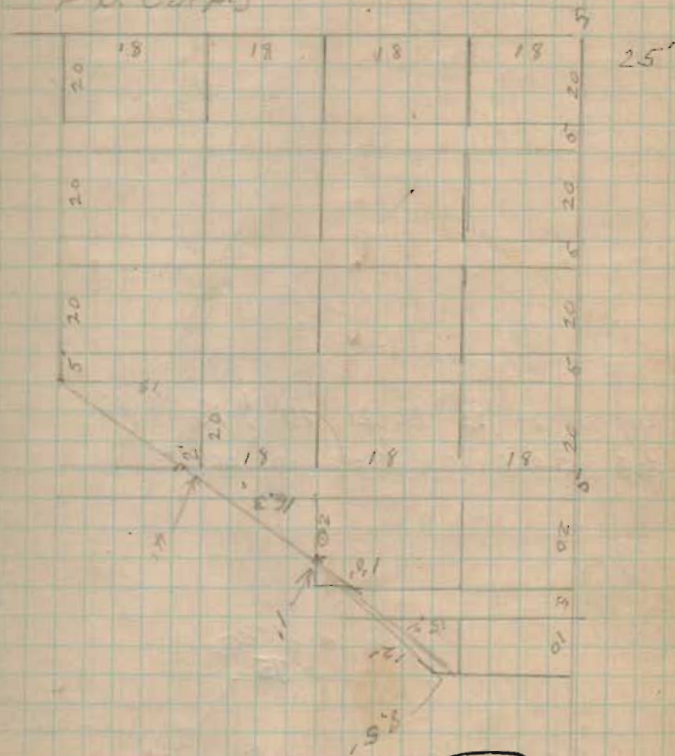


Huber Cemetery
for Trustees.

PLEASANT TWP
SEC 31 T3 R14

July 7th 1923

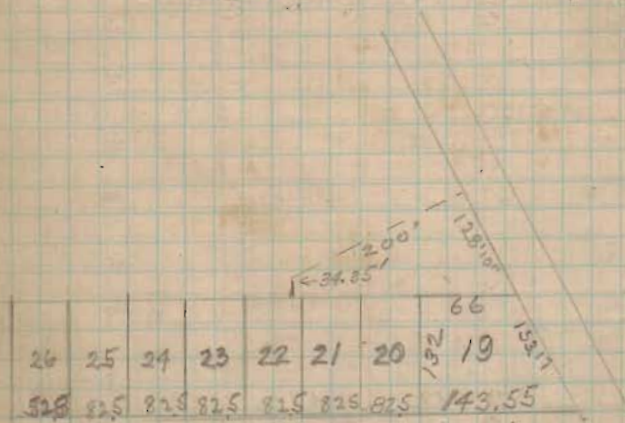
W.A.M. } send plat. to F.H.
E.F. Miller } Nara R.R. H.I. Bell Co.
F.B. Culp }



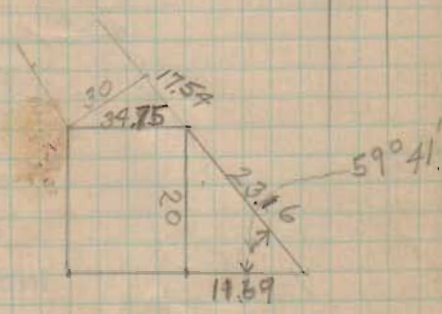
1097

INDEXED ON MAP

Survey for Stabler



26	25	24	23	22	21	20	19
528	825	828	825	825	825	825	143.55



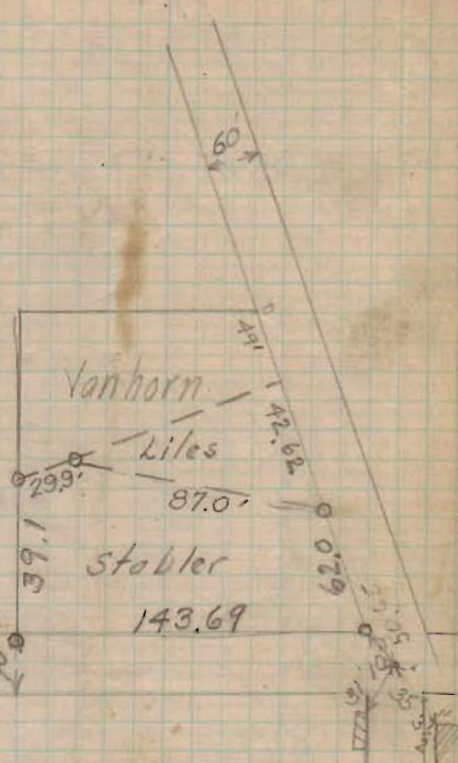
29.16
17.54
153.17
93.27

24.75
17.54
52.29

153.17
17.54
55.02

Lakeview Dec 22 1923

Iron set 2 ft south of property line



Vanhorn
Liles
Stabler

1084

INDEXED ON MAP

Survey for Hamilton

427 1.70
132 .85



(1069)

INDEXED ON MAP

(See Page 55)

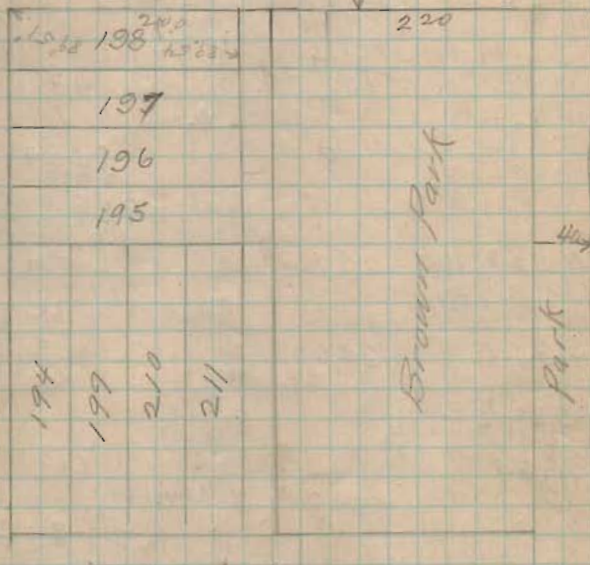
443 2.80 20.26 3
364
160
063
220
126
185

BELLEFONTAINE

W A Montgomery 12/29/23
Wm Smucker

1.38

2.50
1.12



Mad River 60

Brown Part

Part

Sandusky 60

Brown: 504.80 506.5 - 1.7

Sandusky 498.70 501.5 - 2.8

for further notes see page 55

Jo Haughen Survey

Mad River and Chillicothe Mon.

Main + Chillicothe — intersection by
lines from brass across in cart

Auburn and Mad River stone 1867
 Hyd SE 37.3 Wend iron inlet NE 32.7
 S and iron inlet NW 32.3 Center N + top 3.2

Auburn + Main Mon.

Distances	Plot	Mass	
	526.5	523.64	Main to Mad River on Auburn
	526.5	526.14	Chil. to Auburn on Main
	526.5	525.15	Main to Mad R on Chil
	516.5	(515.90) (515.45)	Chil. to Auburn on Mad River

 MO Entertine T
 WA Montgomery
 WM Smuckard
BELLEFONTAINE¹⁴¹

Chillicothe 60'

Main 60'	Chillicothe 60'	Mad River 60'
145	157	184
146	174	184
147	175	184
148	175	184
149	156	184
150	155	184
151	154	184
152	153	184

Auburn 60'

total	525.22	526.50	= 1.28
	522.56	526.50	1.27
	84.84		
	139.63		
	147.52		

1086

INDEXED ON MAP

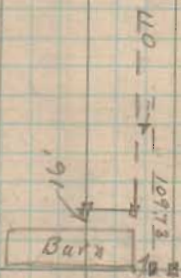
 2.15
 1.30
 1.00
 1.00

97

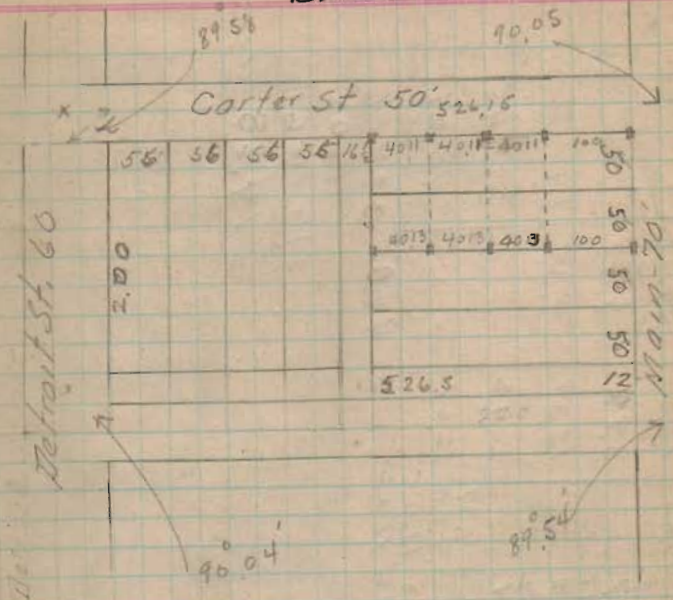
Lots 174 + 175

(1086)

54.84' 54.84' 27.00' 27.00' 54.84'



	220	0.14
	220	220
	16	16
0.0015	16	1920
444	32	
444	32	
3260	2254	2866
1176		
		0.0022
		220
		440
		440
		7920
0.0022		
444	1.000	
	488	
	1270	



	Plat.	
Mens Carter	525.5	526.5 + 66
Alley	525.5	526.5 + 100

(1087)

INDEXED ON MAP

Found stone at Lone Corner
Leon Newland

measured (S89 $\frac{1}{2}$ E) 6.15 ch found
stone

Corrected bearing to read
with bearing in descript.
S88E

We then went to "F" and
established point from old
Witness. Elm tree
Ran N 27 $\frac{1}{2}$ W 4.34 ch to F
found a hole where a stake
might have been

Ran N 52W - 2.62 ch to D

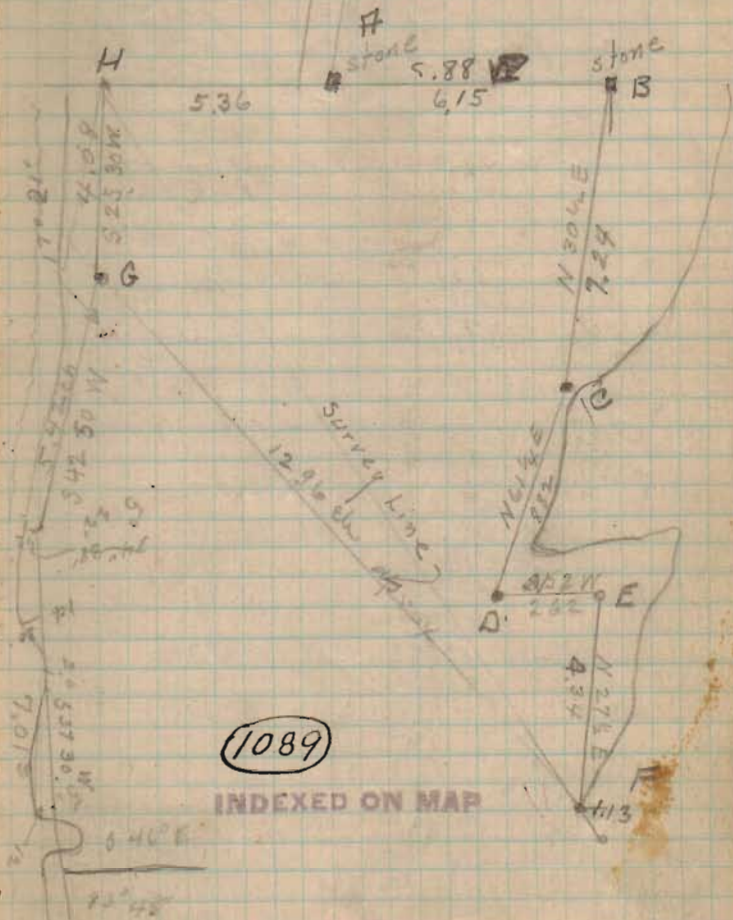
Ran N 61 $\frac{1}{4}$ E 8.82 ch to C

Ran N 30 $\frac{1}{2}$ E 7.24 ch to B

started A measured
5.36 ch on the same
line with A+B estab.
a point at H.

WASHINGTON Twp

VMS 12276



$$\begin{array}{r} 100.3 \\ 80 \\ \hline 180.3 \end{array}$$

$$\begin{array}{r} 433 \\ 1,003 \\ 30 \\ \hline 2,009 \end{array}$$

$$\begin{array}{r} 1003 \\ 25 \\ \hline 5015 \\ 2006 \\ \hline 25.07 \end{array}$$

$$\begin{array}{r} 8.92 \\ 66 \\ \hline 5352 \\ 5352 \\ \hline 588.72 \end{array}$$

$$\begin{array}{r} 55827 \\ 11262 \\ \hline 11262 \\ 11262 \\ \hline 60960 \end{array}$$

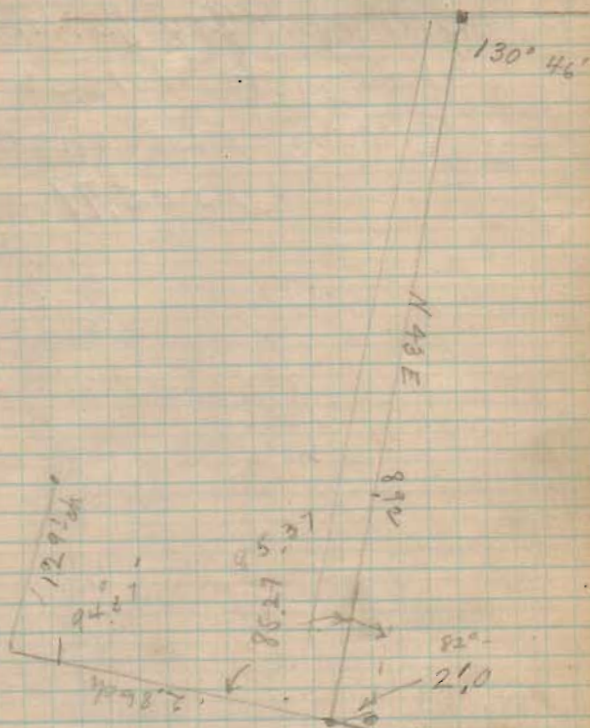
0.0002

55.37

$$\begin{array}{r} 29874 \\ 29355 \\ 26 \\ \hline 564 \end{array}$$

$$\begin{array}{r} 109789 \\ 90030 \\ \hline 199819 \\ 293610 \\ \hline 493429 \\ 181650 \\ \hline 675079 \end{array}$$

$$\begin{array}{r} 4922 \\ 30.18 \\ \hline 49.18 \end{array}$$

$$\begin{array}{r} 40 \\ 12 \\ \hline 52 \\ 48 \\ \hline 4 \end{array}$$


Elev. Waste Wier = 996.76
2.00

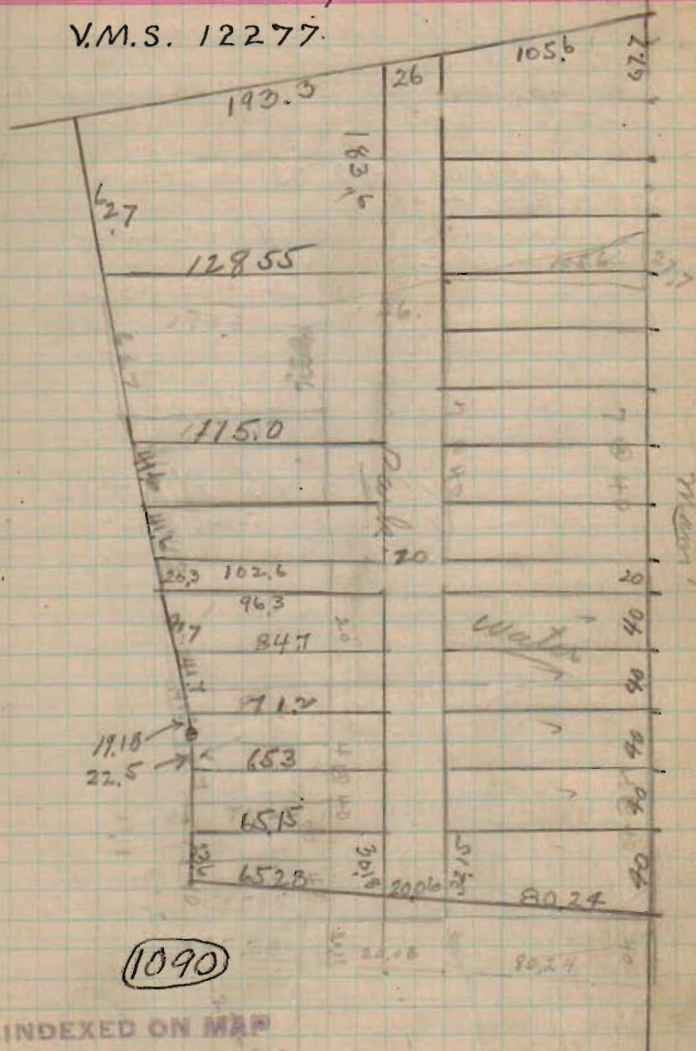
B.M. near Cap Dunlaps Res.

Iron post 1013.06

B.M. 18" Elm 601914425
1005.79

TURKEY FOOT ALLOTMENT

V.M.S. 12277



24
7.77

4.41

6.18 6.18

3.80

7P.

4.67

10.78
1023.84

10.88

1013.06

1.65

1017.61

7.05

1012.96

6.23

1013.79

6.02

1007.77

0.16

1007.93

7.90

1000.03

3.76

1003.99

6.71

97.28

4.67

10.01.98

6.18

95.77

4.41

97.54

5.06

1002.22

97.54

3.68

98.54

4.68

3.58

1002.12

97.54

4.19

97.93

2.59

5.41

1003.34

97.54

4.15

99.19

5.50

10.04.69

7.46

97.23 ck

Elev at Gir Newland + Hull
Water level

North End Retaining wall

Gor. 13 M at Cap Lyons

See Book: 570
Page 64

Water level

Elev at Mon Hull and Newland. Ely used.

1092

INDEXED ON MAP

0 to 1		azimuth	41° 45'
1 to 2	143.2	1 to A.	35° 31'
2 to 3	152.1	A to 7	1° 46'
3 to 4	42.1	7 to 8	357° 51'
5 to 6	160.5	8 to 17	200° 57'
6 to 7	91.6	17 to 20	245° 32'
7 to 8	139.7	20 to 24	231° 00'
8 to 9	153.2	24 to X	182° 23'
9 to 10	146.1	X to 0	158° 44'
10 to 11	58.7	0 to 1	41° 50'
11 to 12	60.5		
12 to 13	86.0		
13 to 14	136.3		
14 to 15	127.0		
15 to 16	100.4		
16 to 17	182.6		
17 to 18	131.2		
18 to 19	103.2		
19 to 20	145.6		
20 to 21	74.0		
21 to 22	174.7		
22 to 23	130.7		
23 to 24	101.2		

S 41° 45' W
 S 25° 15' W
 S 30° 01' W
 S 7° 45' E
~~S 71° 30' N 21 E~~
 N 65° 30' E
 S 61° 30' E
 N 2° 15' E 346.8
 N 21° 34' W 446.1



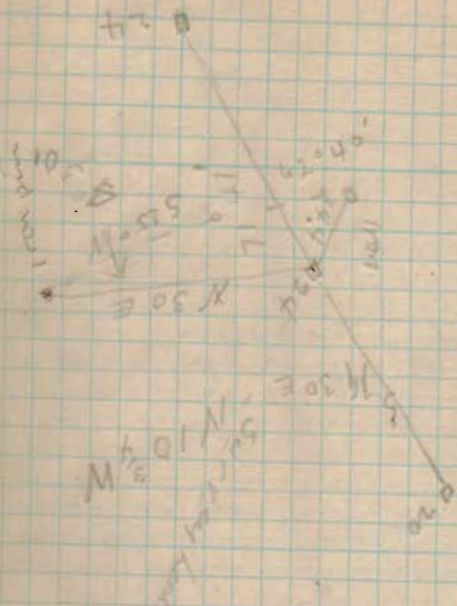
STOKES TOWNSHIP
 TURKEYFOOT survey



383 2
 282 5
 257 0
 325 8
 333 8
 285 9

1092

INDEXED ON MAP



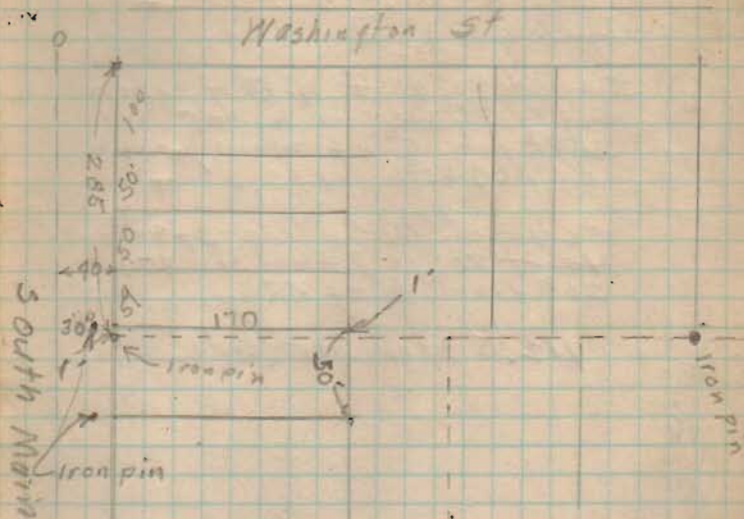
(1092)

INDEXED BY MAPS

6200
10

28	26	26	13
2	9	0	3
4	2	7	2
4	4	2	2
4	4	2	2

SURVEY CORA LANE
 SOUTH MAIN ST. BELLEFONTAINE



INDEXED ON MAP

100
 79 Survey for Geo Reed

measured 90 ft from iron between
 Hornberger & Reed.

Turned $80^{\circ} 1'$ - with Hornberger
 and Reed line to a pit
 26 ft from \odot of main track
 of CCC+sth. 133.3

measured 110' along st turned
 110 ft $80^{\circ} 1'$ thence 85' to
 26' from \odot of RR

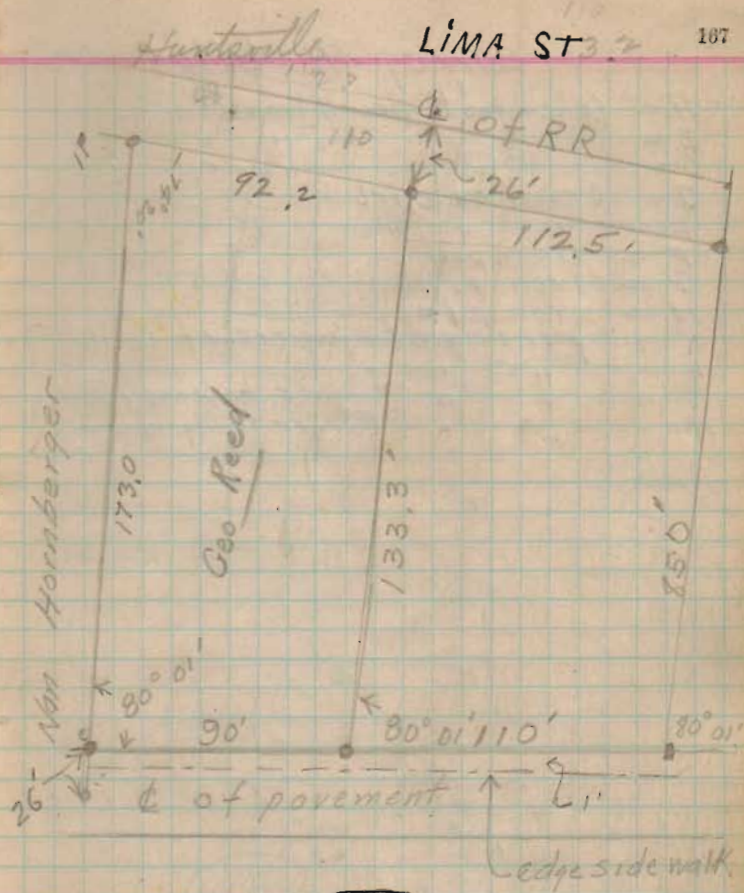
112.5 ft on backside

Levels-

7.49	Top take
2.71	S M
3.42	N M
1.25	NE
0.66	SE

A. 1

v



INDEXED ON MAP

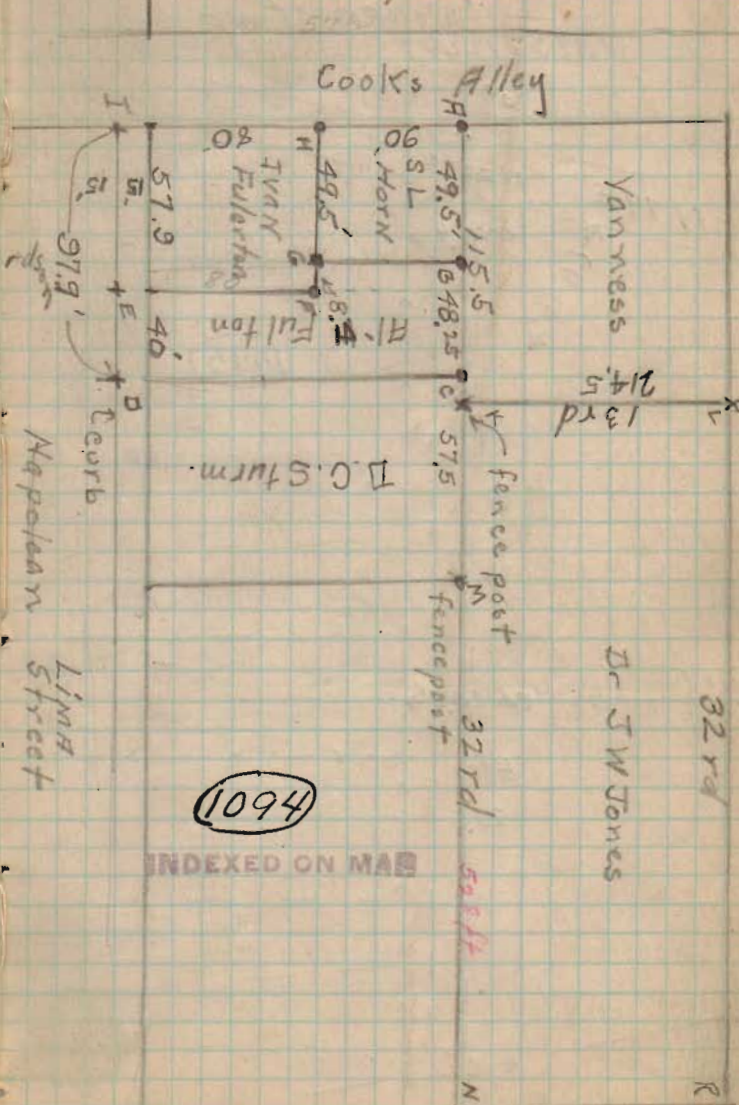
Surrey Pl Fulton

- H = fence post drove iron pin
 B = " " "
 C = " " "
 D = Cross on curb
 E = " " "
 F = iron pin
 G = iron pin
 H = iron pin
 K = fence post - former cor to Coulter Richa rds.
 L = " " - Corner to Jones + Bailey
 R = " " - Corner to Myra Jones
 Y = " "

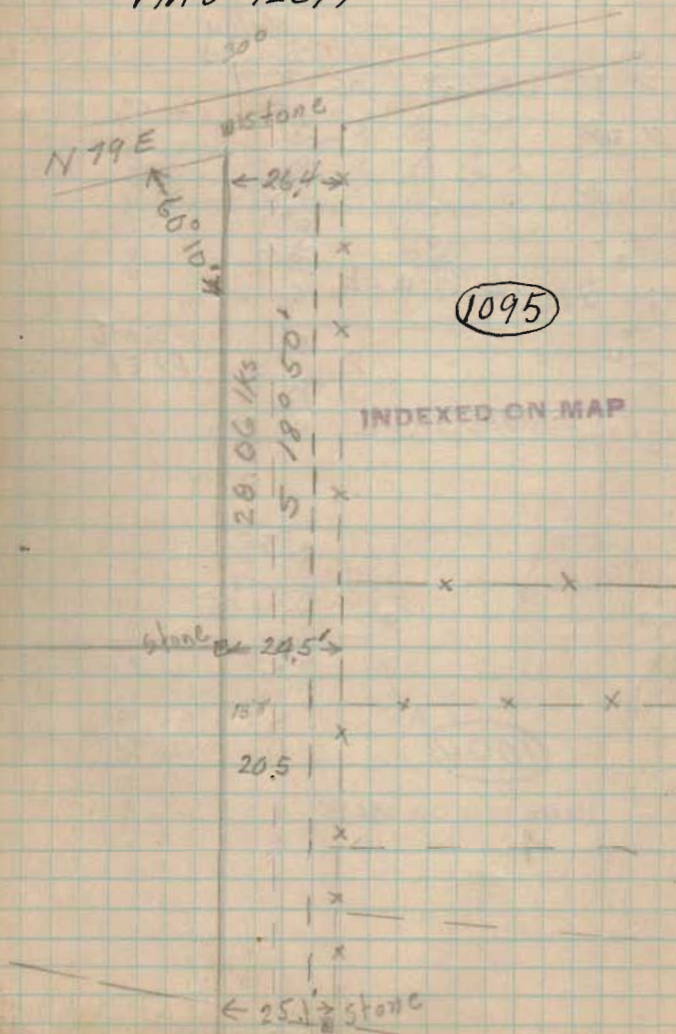
49.5
 20.3
 97.8

115.5
 97.8
 17.7

Huntsville Aug 1924



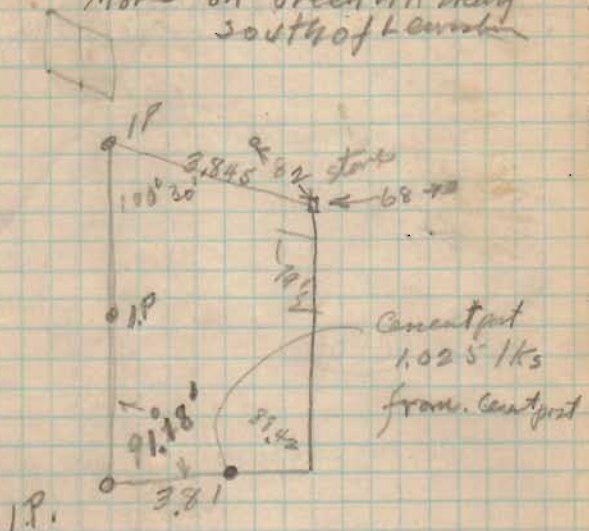
Survey of Turkey Foot Lane

STOKES TWP
VMS 12277

6/17/35

Road 248

More on Greenville Treaty
south of Lewis



1096

INDEXED ON MAP

31.83
 31
 22.83
 31.415
 3.81
 31.415
 25.1320
 9.245
 11.970115

2/.03

INDEX

Section	TOWNSHIP		RANGE		CITY or VILLAGE	ADDITION
	N.	S.	E.	W.		
						<i>Ballmont</i>
						<i>M^s Arthur Township Survey 9899</i>
						<i>M^s Arthur Township Ditch Levels</i>
36	6		8			<i>Russel Point Krouskop</i>
						<i>Zane Cemetery lots</i>
						<i>Jefferson Survey 3220</i>
						<i>Wolf Island</i>
36	1	6	8			<i>DeGraff Cemetery</i>
						<i>Huntsville Cemetery Levels</i>
						<i>Middleburg Cemetery Levels</i>
						<i>Lot 2205 Bellefontaine</i>
						<i>Survey 9932</i>
						<i>Cemetery & School lot</i>
						<i>lot 197 Belleft</i>
						<i>Survey 9987</i>

INDEX

FOR WHOM SURVEYED	YTD EQUALTY	WHEN			Page
		Day	Month	Year	
		6	April	1921	2
<i>Shick & Hughes</i>		16	"	1921	6
<i>Lee McCormick</i>		7	May	1921	8
<i>John Krouskop</i>		14	June	1921	11
<i>Zane Tp Trustees</i>		15	June	1921	13
<i>Eliamer Cook</i>			June	1921	17
<i>LC Lawson</i>		18	July	1921	18
<i>Cemetery Trust</i>				1921	22
		30	July	1921	24
<i>a.</i>		4	Aug	1921	30
<i>Carl Shears</i>		13	Aug	1921	41
<i>Alice Forsythe</i>		23	Aug	1921	46
<i>ME LeSourd</i>		27	Aug	1921	50
<i>Miss Knight</i>				1921	54
<i>B.S. Shape</i>		24	Sept	1921	56

INDEX

Section	TOWNSHIP		RANGE		CITY OR VILLAGE	ADDITION
	N.	S.	E.	W.		
						Praters Addition Wassel Point
						Washington Tp Line
21	5			13		
15	6			8		
35	5			13		
31	2			15		
						Lots 410+409 Belleft Survey 9904 Huntsville.
						1/2 276 + 1/2 Turkey Foot Lane

INDEX

FOR WHOM SURVEYED	WHEN			Page
	Day	Month	Year	
S. Pratter				
Ken Miller	Oct	29	1921	63
Wm Anstine				
				1921 70
Pratt heirs	Feb	24	1922	72
Ora Vanhorn	19	March	1922	75
James Crane	5	April	1922	77
Mattie King	11	"	1922	79
Moore Bros		April	1922	84
Hamilton, E.	26	"	1922	90
Geo Reed			1924	167
H. Fullon			1924	169
L. Hull	17	JUNE	1925	170