

Road No. 88
Stakes Turp.

Stakes Placed 30' from E
for a 60' Road.

Vanhorn 549 X 10 = 0.13 Acres no fence
Williams 1336 X 10 = 0.30 Acres
Childs 1396 X 10 = 0.32 Acres
Vanhorn 1336 X 10 = 0.30 Acres
4607 1.05 Acres ck.

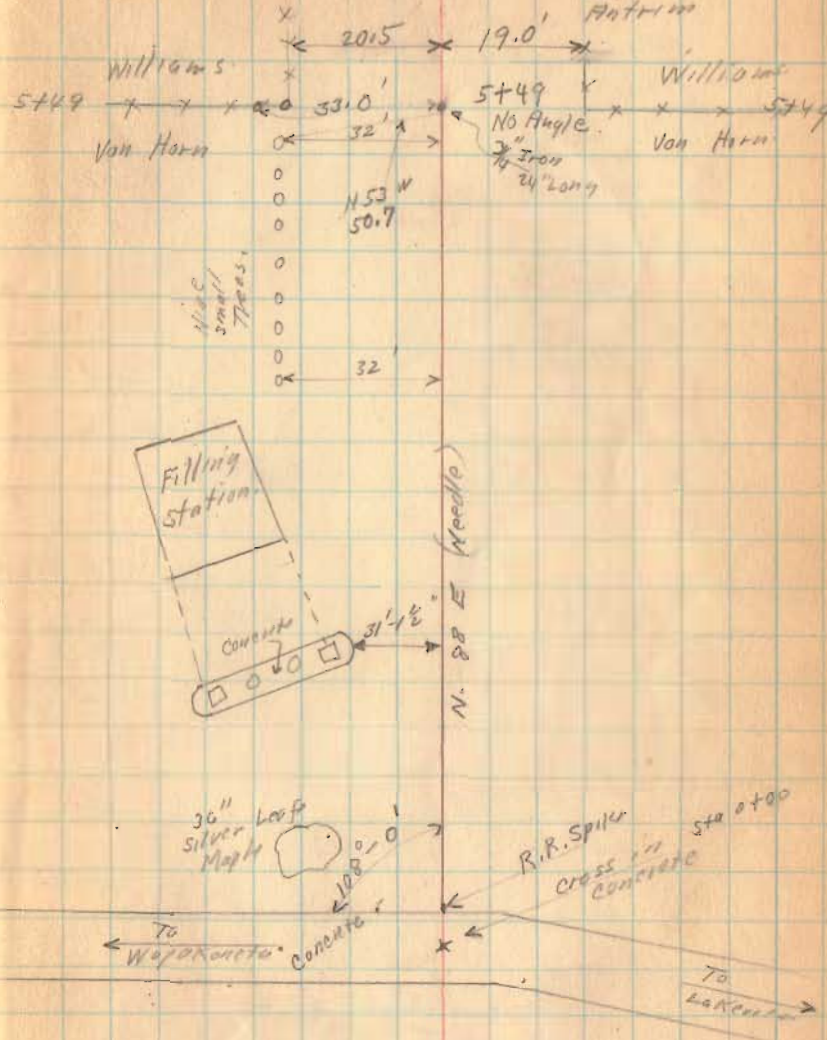
1297
INDEXED ON MAP

I.C.M. 168
State Route 32

Aug. 14-1931

Clear
Wright
Bridge
Carris,
Anthony

67

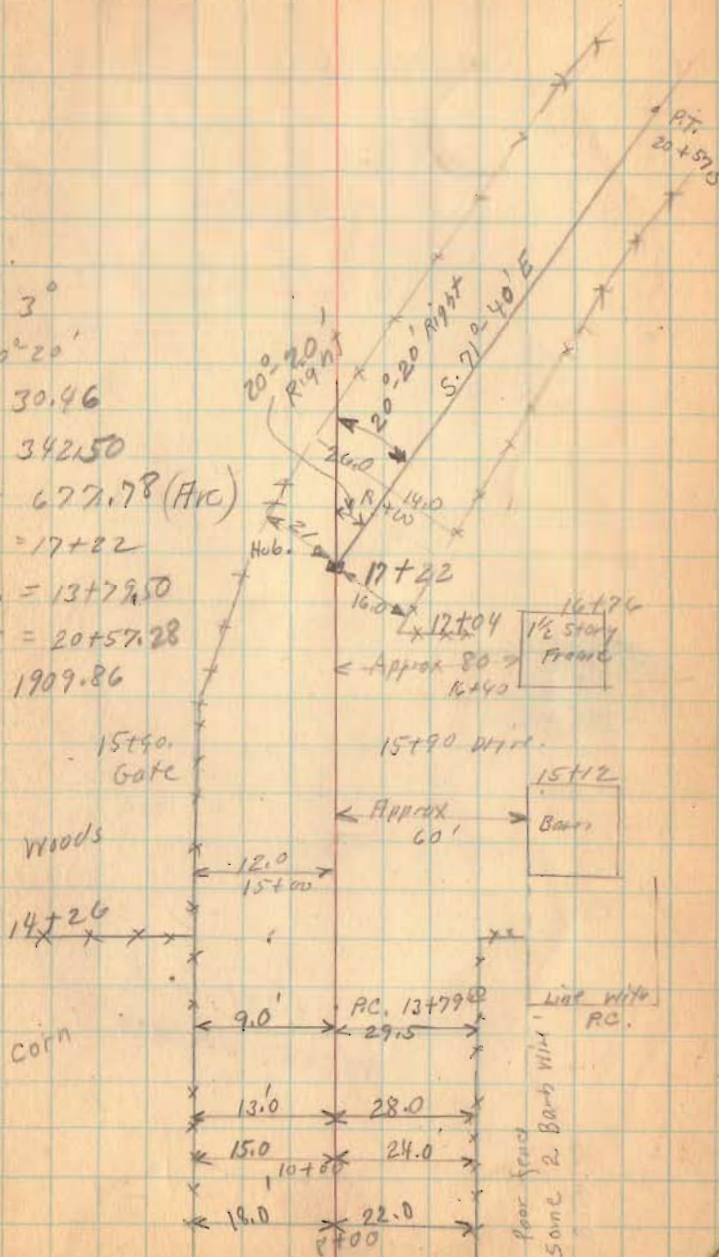


Road No. 88

8-14-31

68

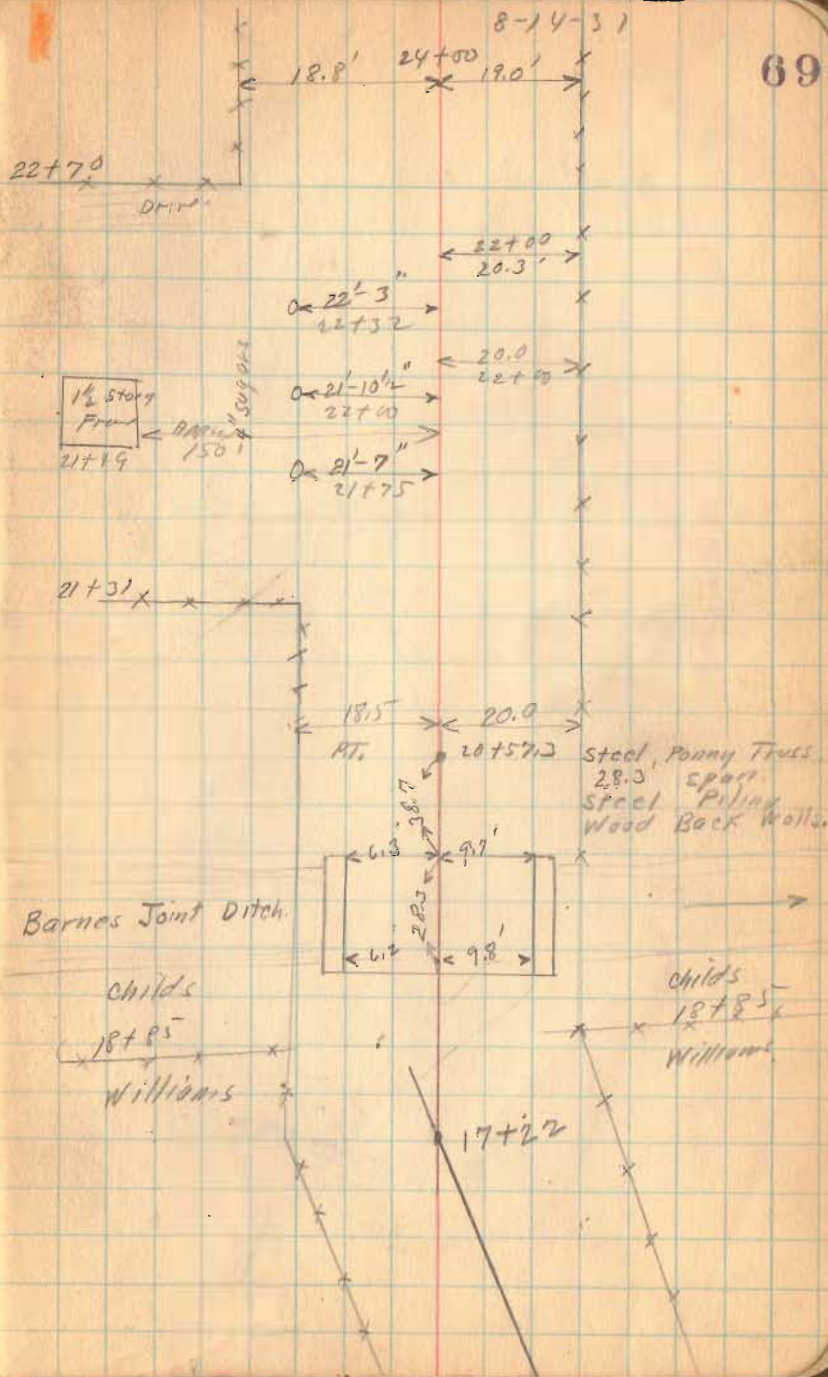
$D = 3^\circ$
 $\Delta 20^\circ 20'$
 $E = 30.46$
 $T = 342.50$
 $L = 677.78$ (Arc)
 $P.I. = 17+22$
 $P.C. = 13+79.50$
 $P.T. = 20+57.28$
 $R = 1909.86$



(1297)
INDEXED ON MAP

Road No. 88

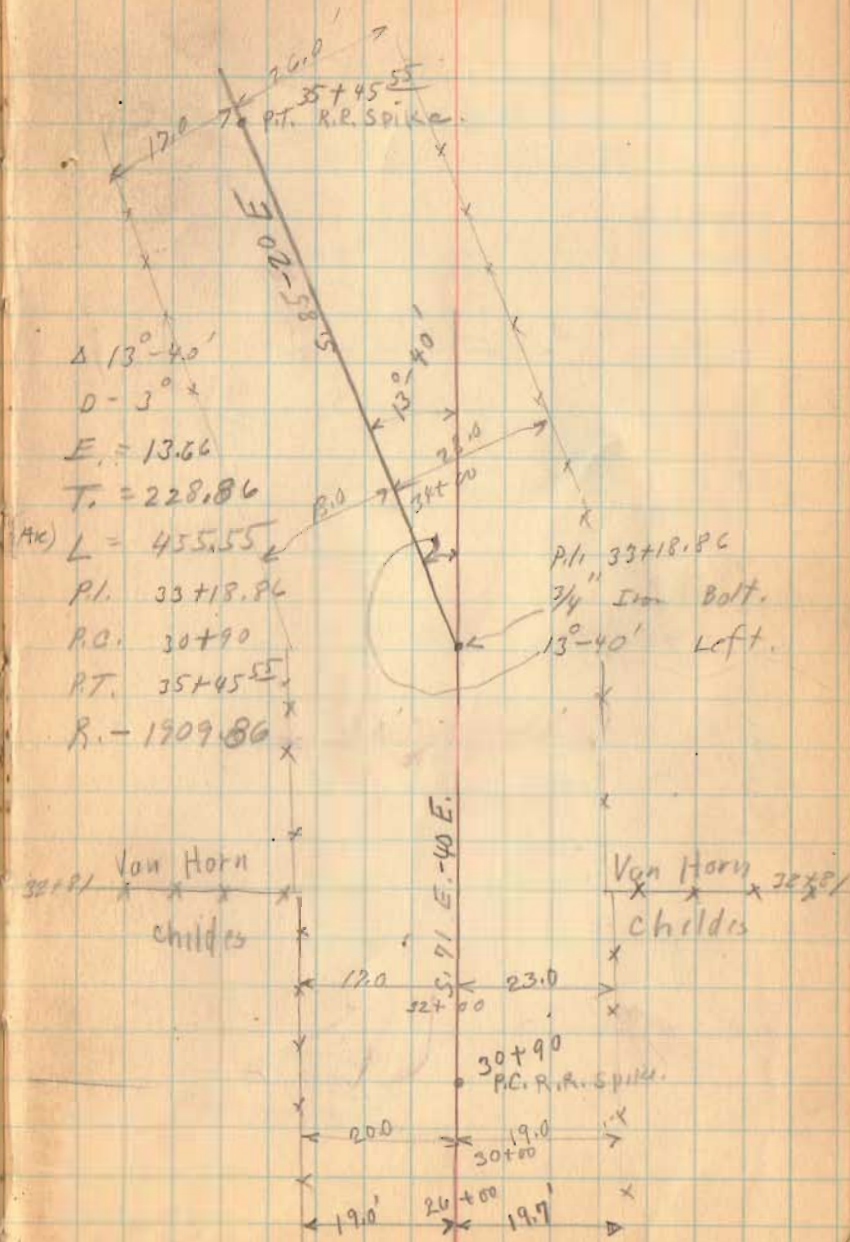
1297
INDEXED ON MAP



Road No. 88

K-41-2

70



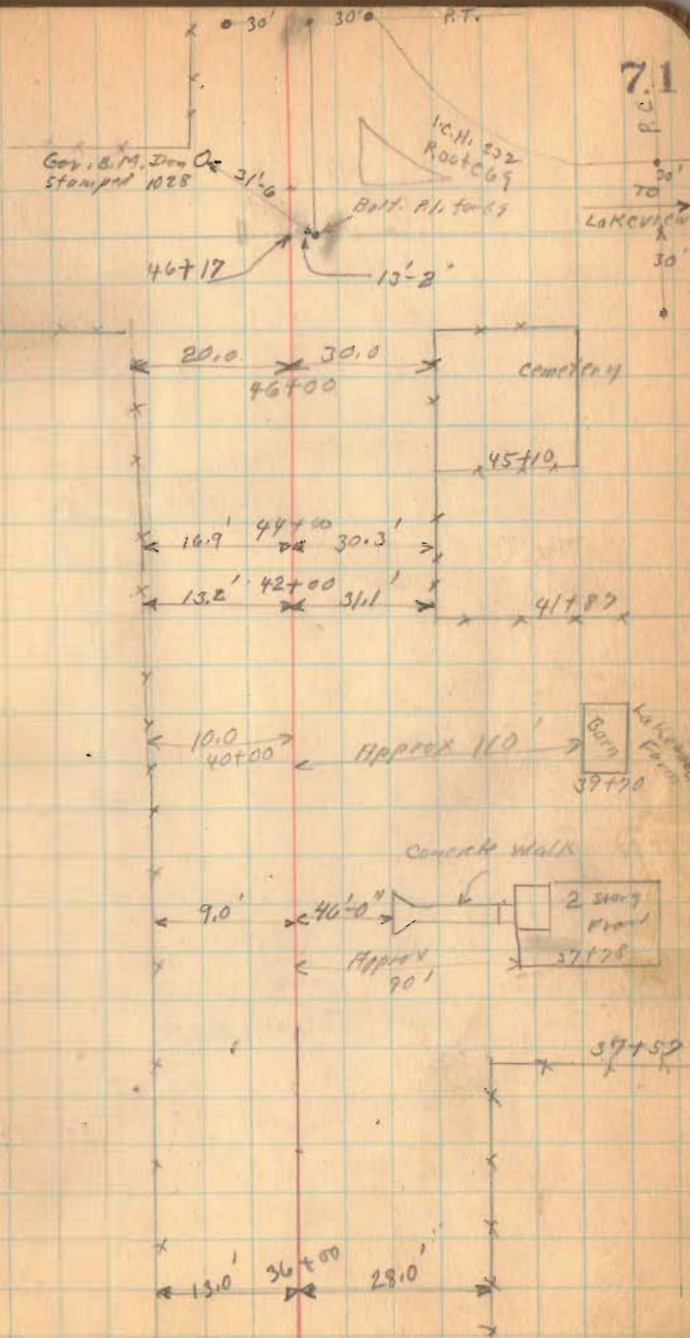
$\Delta 13^{\circ}-40'$
 $D = 3^{\circ}$
 $E = 13.66$
 $T = 228.86$
 $L = 455.55$
 $P.I. 33+18.86$
 $P.O. 30+90$
 $P.T. 35+45.55$
 $R. = 1909.86$

(1297)
INDEXED ON MAP

Road No. 88



1297
INDEXED ON MAP



Jan. 10-1932
cloudy

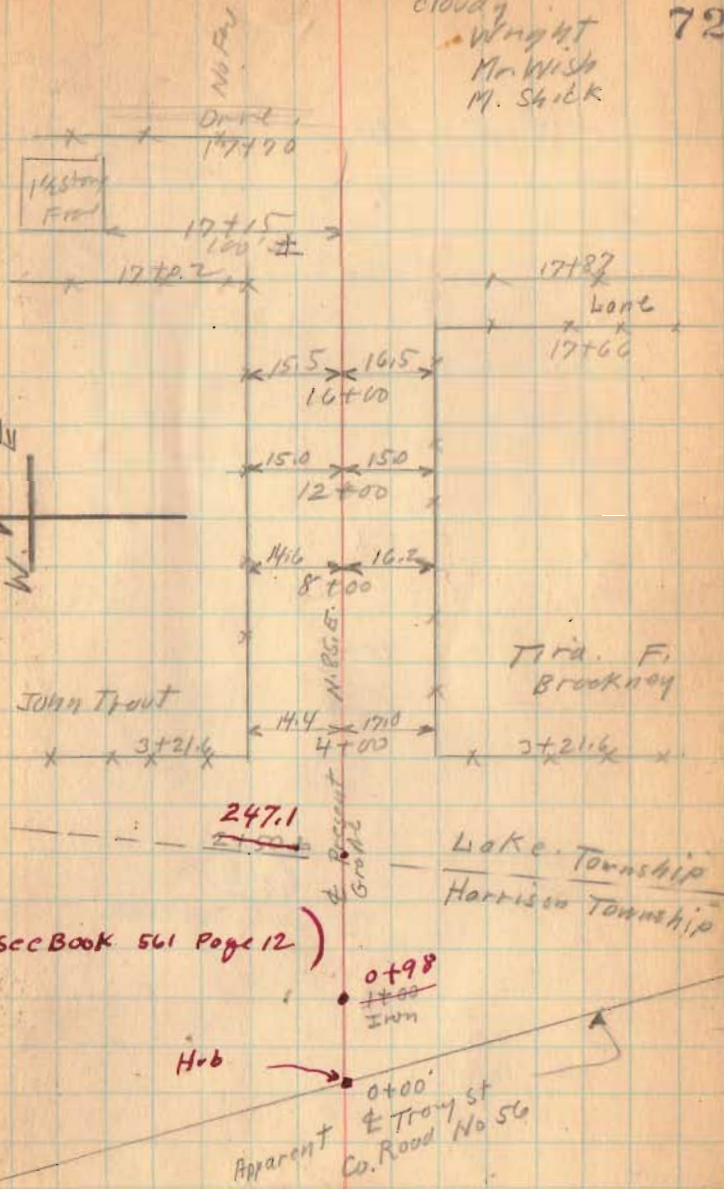
72

Wright
Mr. Wish
M. Shick

Road 219
Lake Twp.

Stakes Placed 20' from E for 40' Road
Stakes 2-4-6-8-10 etc.

Trustees getting land for 40' Road



(1298)
INDEXED ON MAP

(see Book 561 Page 12)

Road No. 219

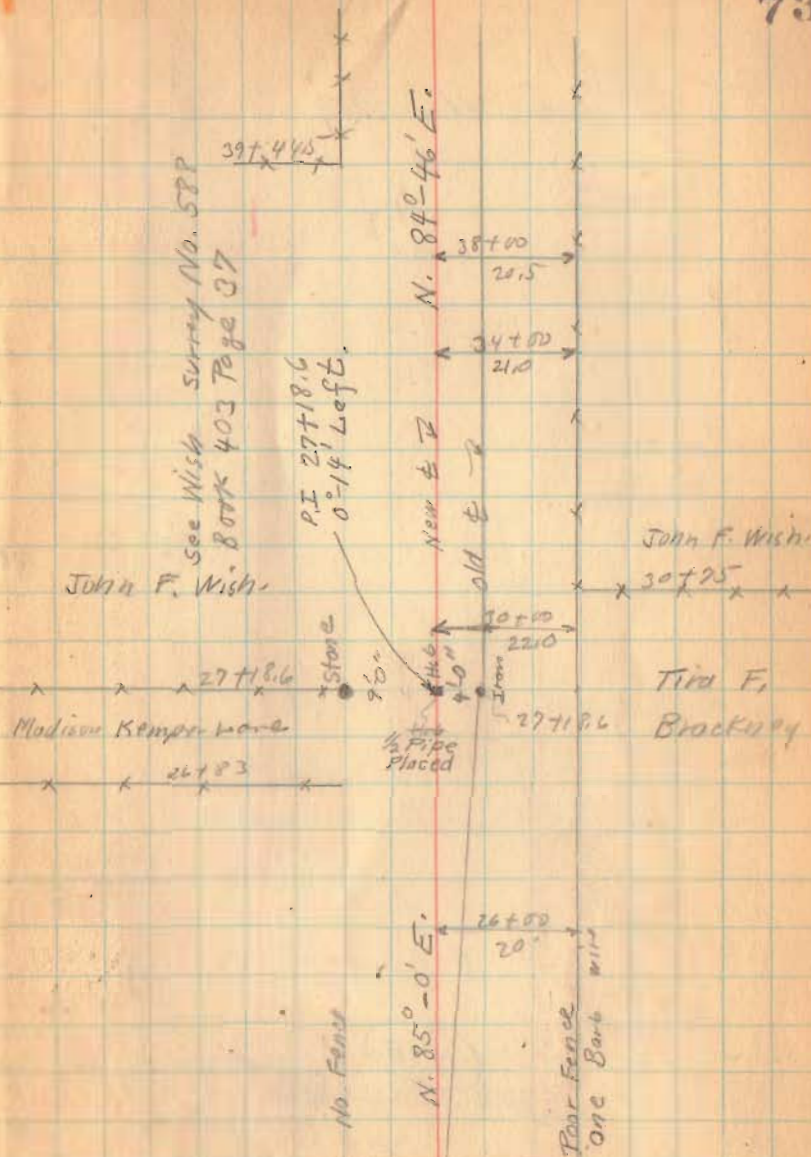
$$\begin{array}{r} 4000 \\ 51 \\ \hline 3949 \end{array}$$

$$\begin{array}{r} 2700 \\ 13 \\ \hline 2687 \end{array}$$

(298)
INDEXED ON MAP

1-10-52

73



Road No. 219

$29\frac{1}{2}$
 $\frac{1}{1}$

$\frac{13}{5}$

1298
INDEXED ON MAP

see Harvey Survey
No. 1221 B.M.K. 572 Page 29
Herman
Harvey

Line
46+44
John F. Wisker

121.6
46+00

N. 88° - 46' E.

40' 0"

190' 0"

old

1-10-32

74

1.25'

Milton Shick,

46+44

John F. Wisker

20'

44+50

44+01
70' ±

21'

History
Frd

DRIVE 42+70

42+61

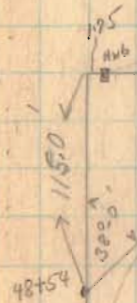
111.5

42+00

195'

Road No. 219

P.I. 52+42.73
 Δ 37° 35' Left.
 D. 12°
 R. 478.34
 T. 162.73
 L. 313.19
 E. 26.92



ST. 49+67.8
 PC 47+30.31

P.I. 48+54
 Δ 38°-0' Right
 D - 16°
 R - 359.26
 T - 123.69
 L - 237.50
 E - 20.69

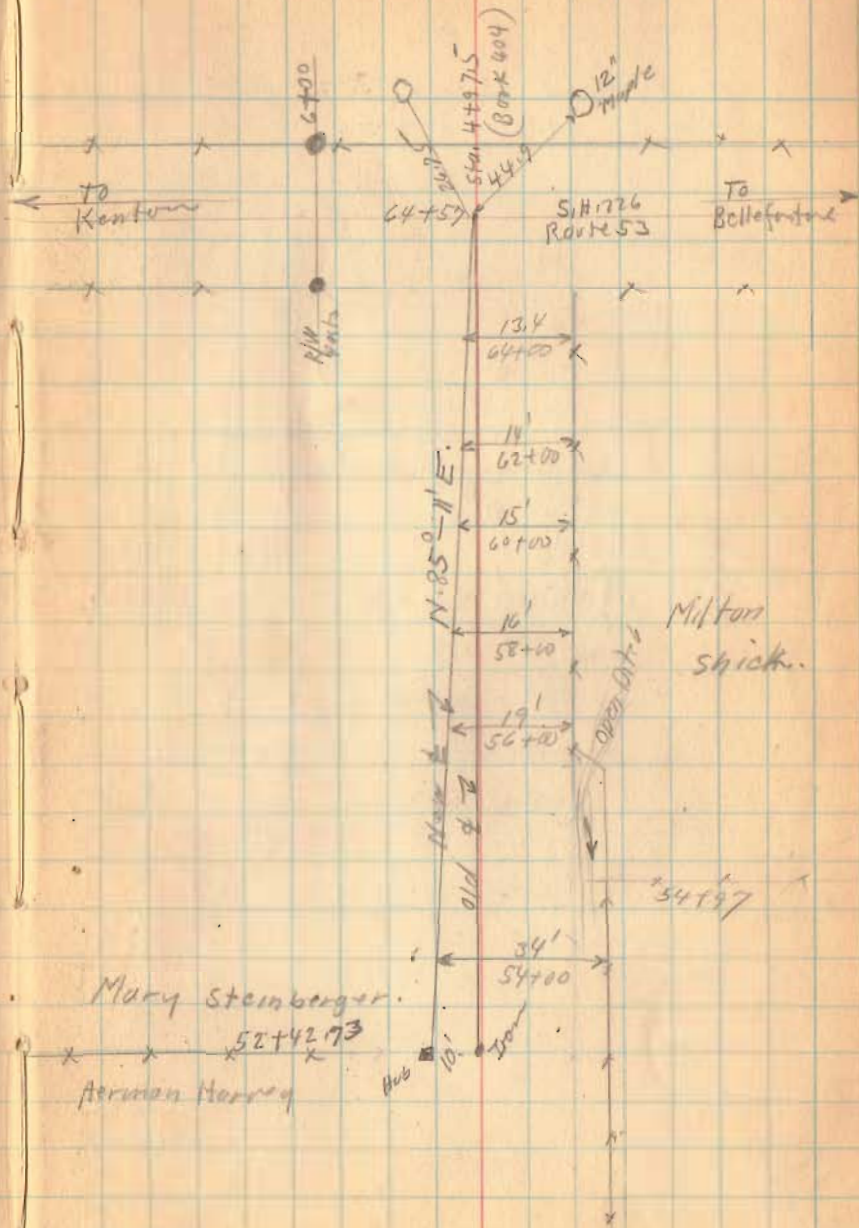
1298
 INDEXED ON MAP

Road No. 219

Jan - 11 - 1932
cloudy

Wright
Mr. Wish

76



1298

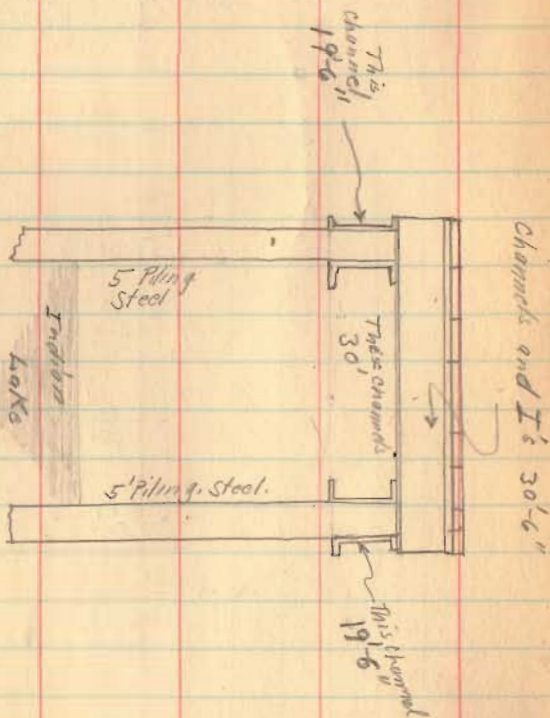
INDEXED ON MAP

Mary Steinberger.

52+42.73

Arman Harry

Bridge - Orchard Island Road North
Road No. 253



Jan-20-1932

Cloudy

Wright

MSK: rda

77

