

(Road 63 Continued
on Page 63)

April 4, 1935
Cool
F. Wright
E. Cole

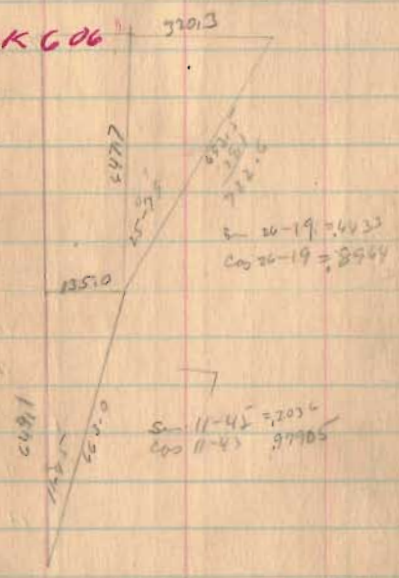
Bridge 63-2.30
Miami Township

- 12+00
- 10+00
- 8+00
- 6+00
- 3+00
- 1+00

SEE PAGE 43
SEE BOOK 610

See Book 603 for ROAD
64 from Co. Line To Road 71

See BOOK 606

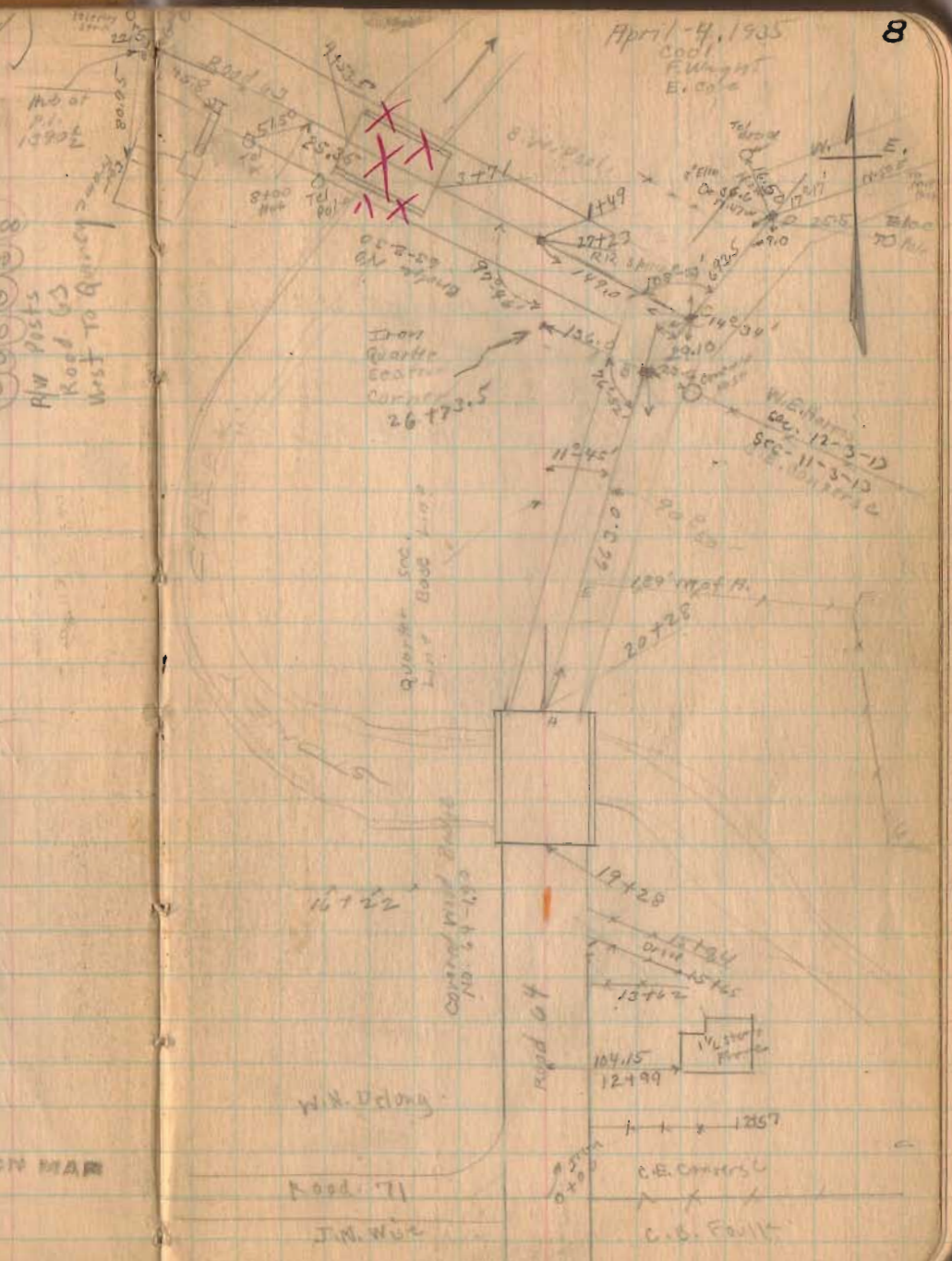


- 12+00
- 9+00
- 6+00
- 2+00

R/a. Posts
Road 64

1804

INDEXED ON MAP



Bridge 63-2.30

Road 63

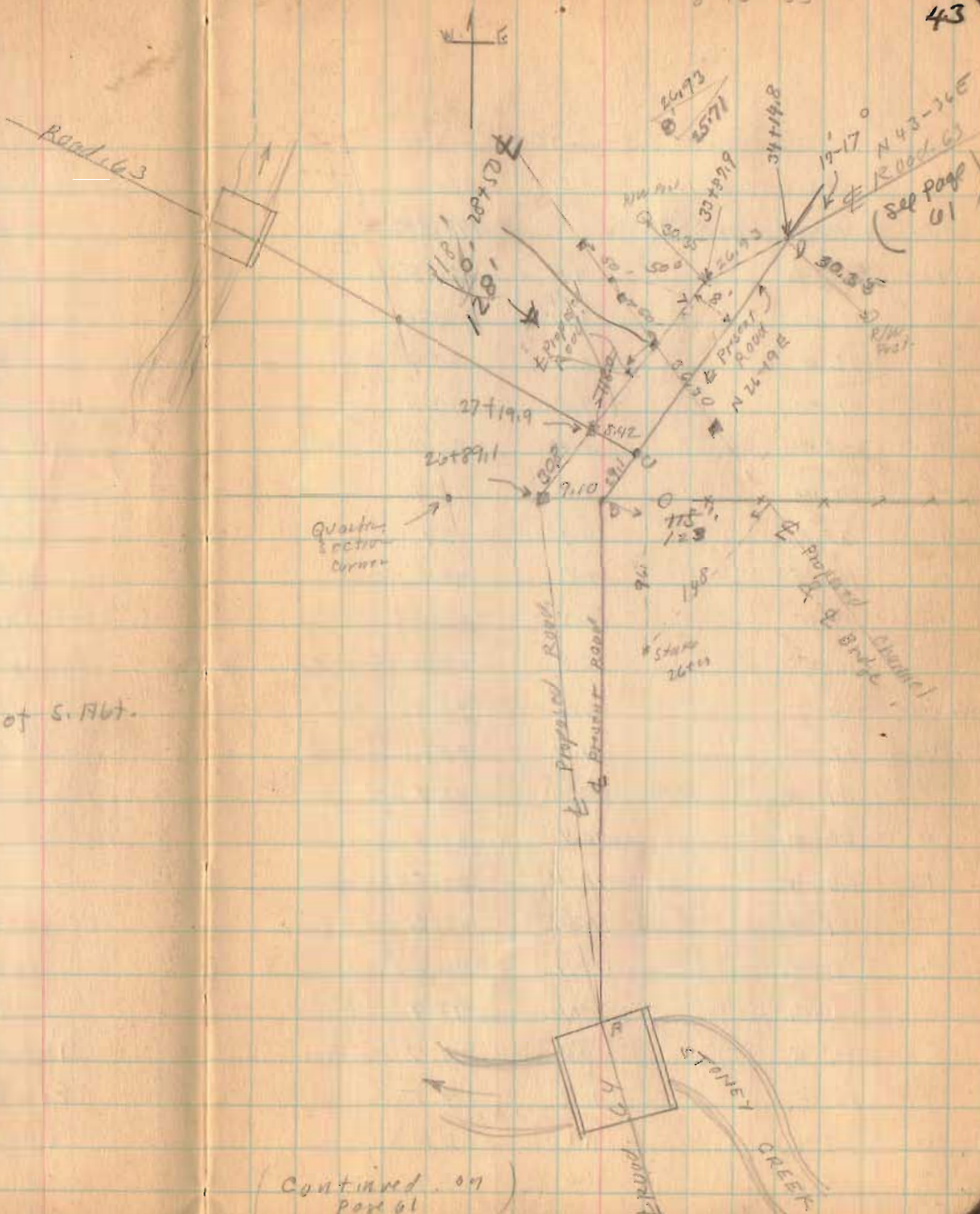
SEE PAGE 5

128'-0"
82'-4 1/4

45'-9 1/2 Road To Face of S. Mt.

1804

INDEXED ON MAP



(Continued on Page 61)

Road 63
(continued from Page 43)

Jan 8-05 $\frac{.1420}{4.260}$

53+00

49+00

46+88

45+00

40+00

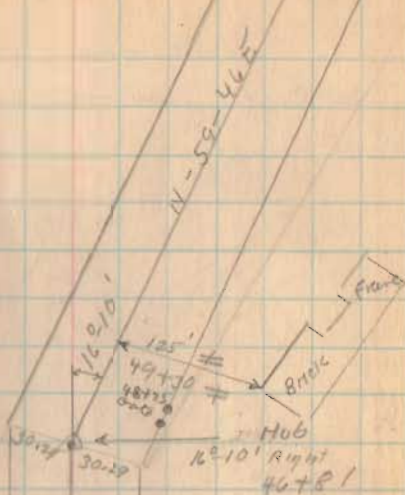
36+00

1804

INDEXED ON MAP

61

Jan - 29 - 1937
C. J. ...
F. Wright
& Ipsley



Road No. 256

46+86

Approval &

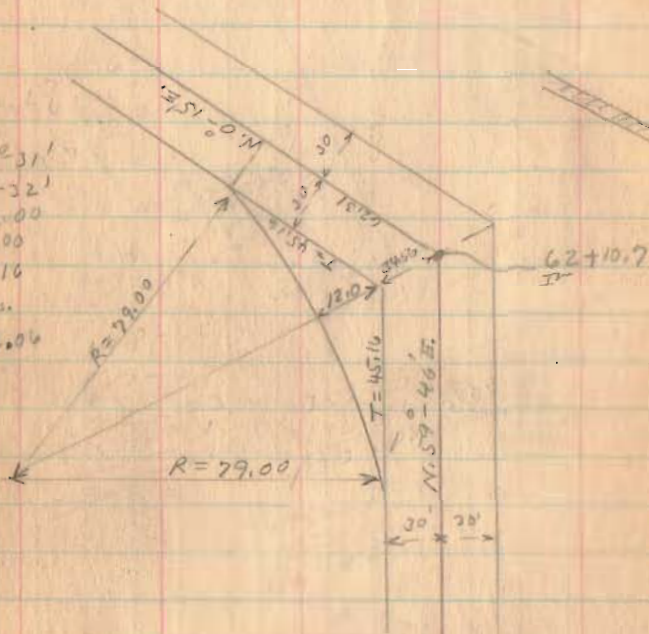
N 40 - 36 E

30'

30'

Road 63
Continued from Page 43

$\Delta = 59^{\circ}31'$
 $D = 78^{\circ}32'$
 $R = 79.00$
 $E = 12.00$
 $T = 45.16$
0.01 Acres
A.C. 82.06



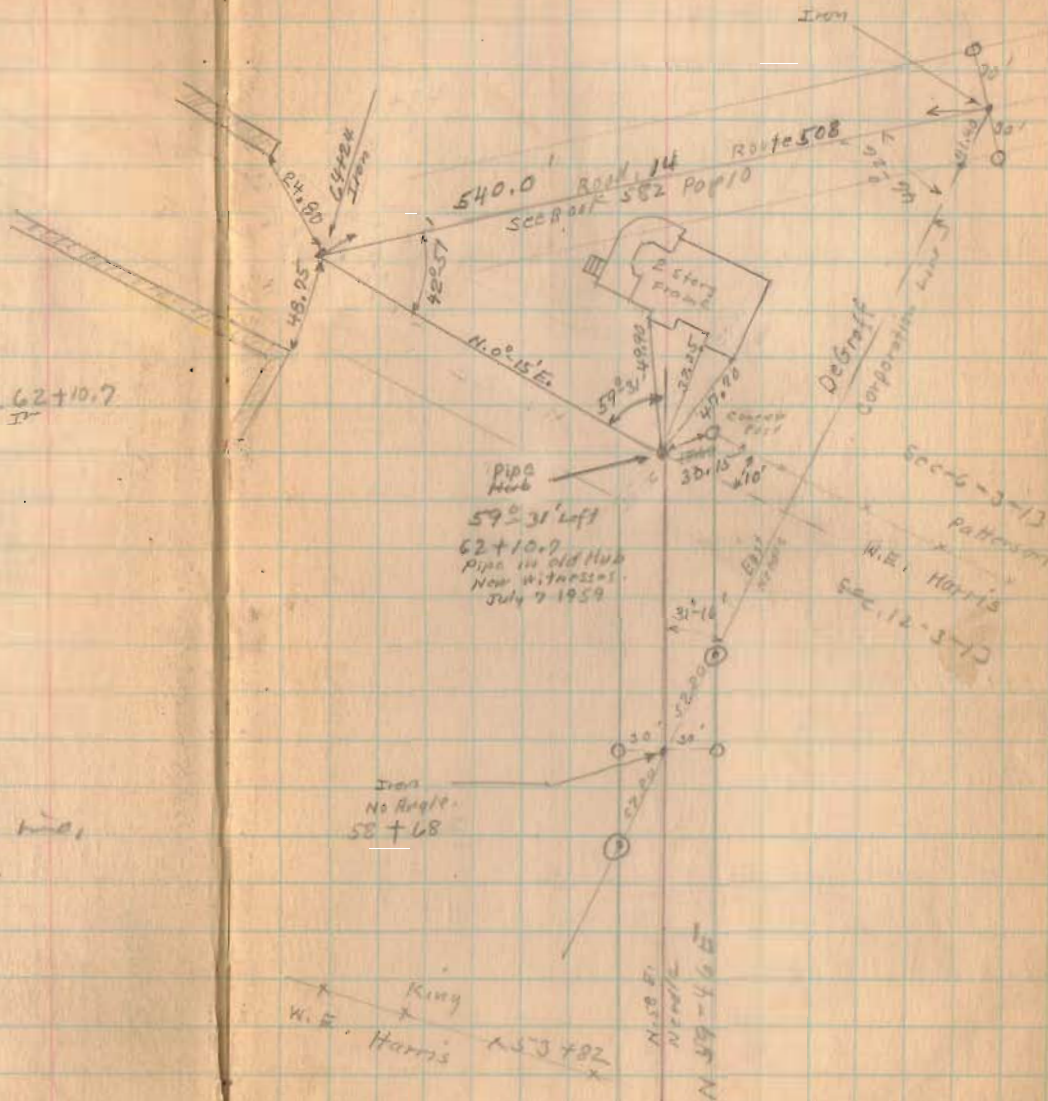
58+68 Set on skew with Corporation line.

56+00

1804

INDEXED ON MAP

Cont'd R
N.W. 1/4
Sec 800
Page 11



King
W.E. Harris
153782

N 59-46 E
N 59-46 E

Road 63
 (Continued from Page 8)

29+00

27+00

22+00

19+00

15+00 left only.

13+90.5 Right only

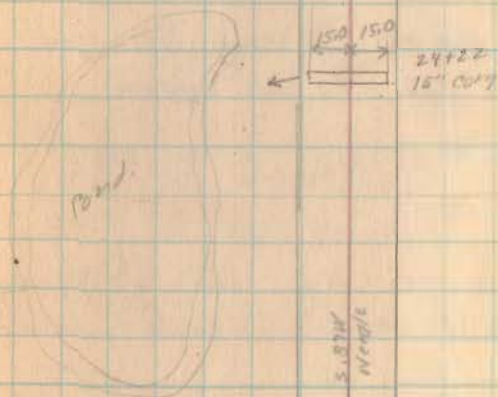
630

Feb. 6-1937
 clear-cold
 F. Wright
 G. Wilgo
 G. Pisony

63

Continued in Book 603 Page 5

D.O. Speer
 W. Ward
 27+97
 28+04
 L.M. Kress
 Ben. W. Pool



S. B. W. W. W. W.

Hub
 Sta. 13+90.5
 see Page 8
 10'-05" left