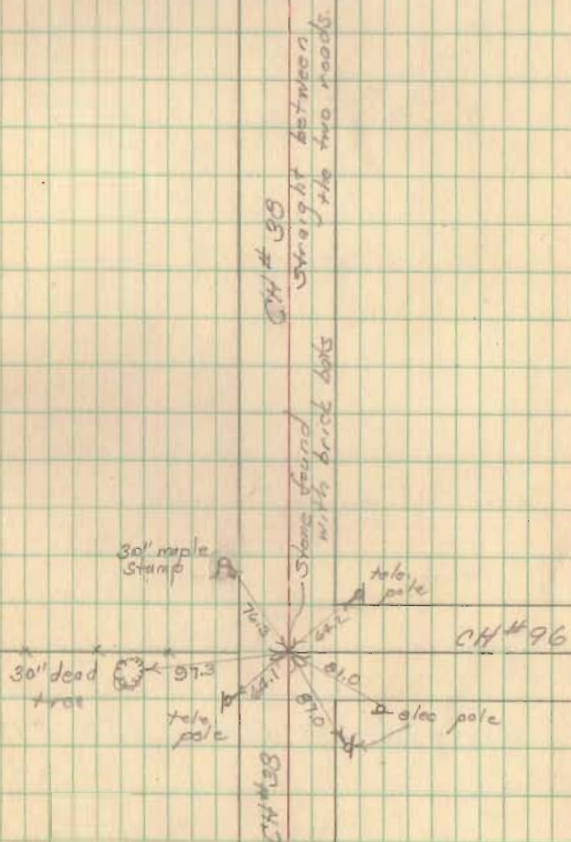
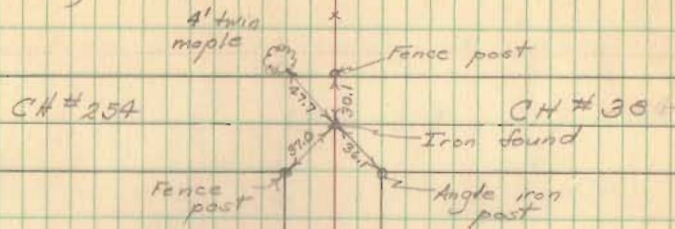


Witnesses to corners of
 CH#38 at CH#254 + CH#96.

Nov. 1, 1950
 D. Dodson
 V. Detrick
 N. Keyser



Roads 38 + 254.

Scott

3/21/39

6

41+00

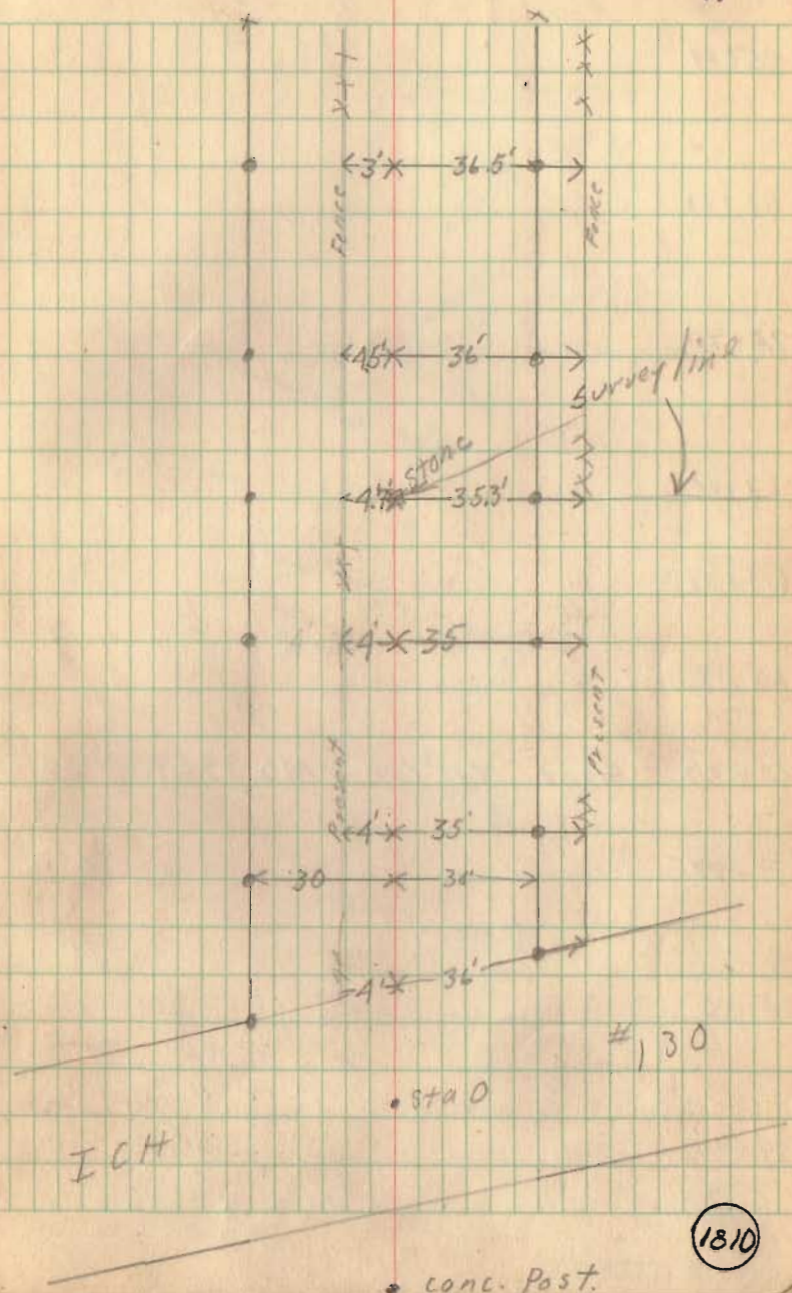
34+00

26+39

18+00

12+14

0 survey line + center ICH #130



1810

Roads 38 & 254

86+08

81+01

79+70

69+00

65+07

60+47

60+07 Stone NW Cor VMS 9969

59+835

59+56

49+00

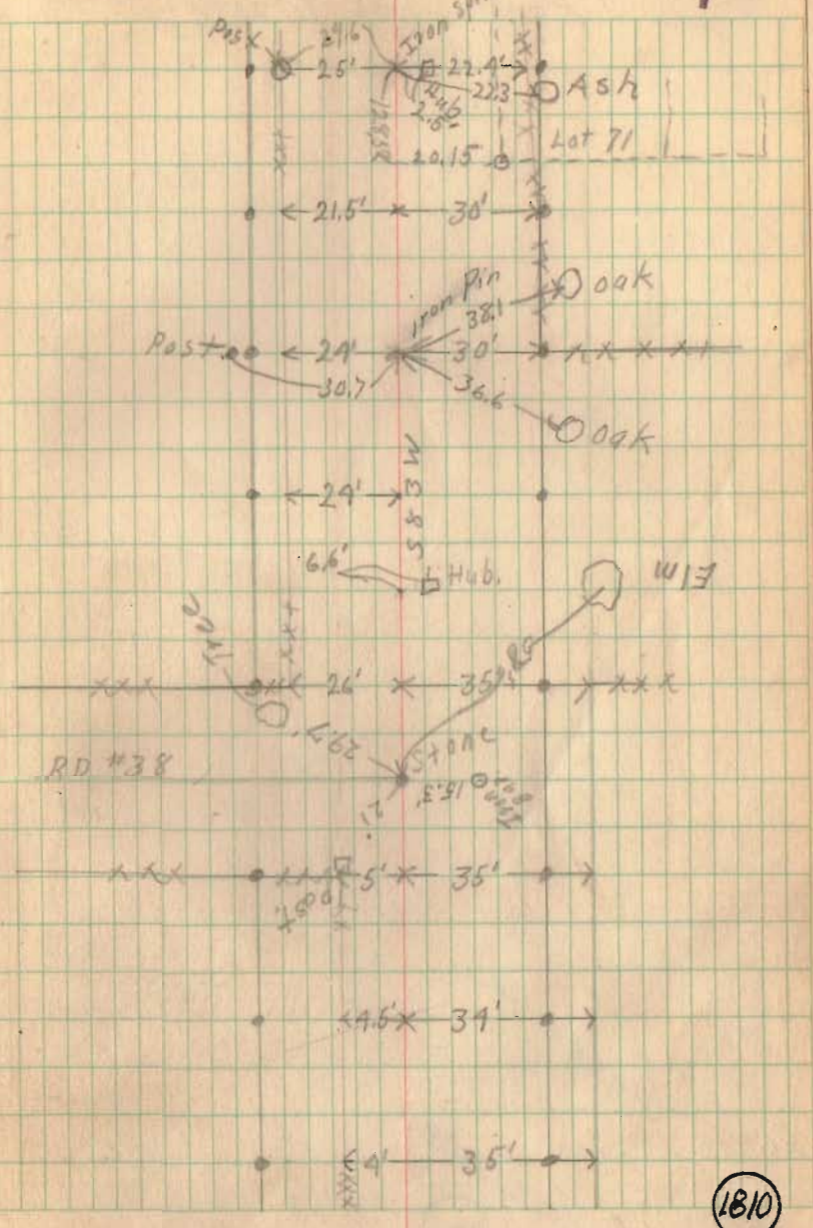
Mon 63+00

Mon 61+07P left only

Mon. 59+00

199' @ Zumbor

7

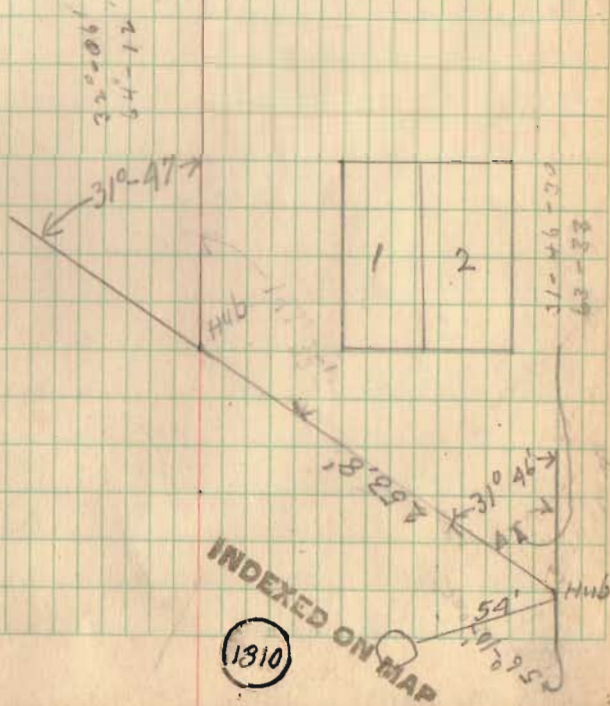


1810

INDEXED ON MAP

Roads 38 & 254

See pg. 26

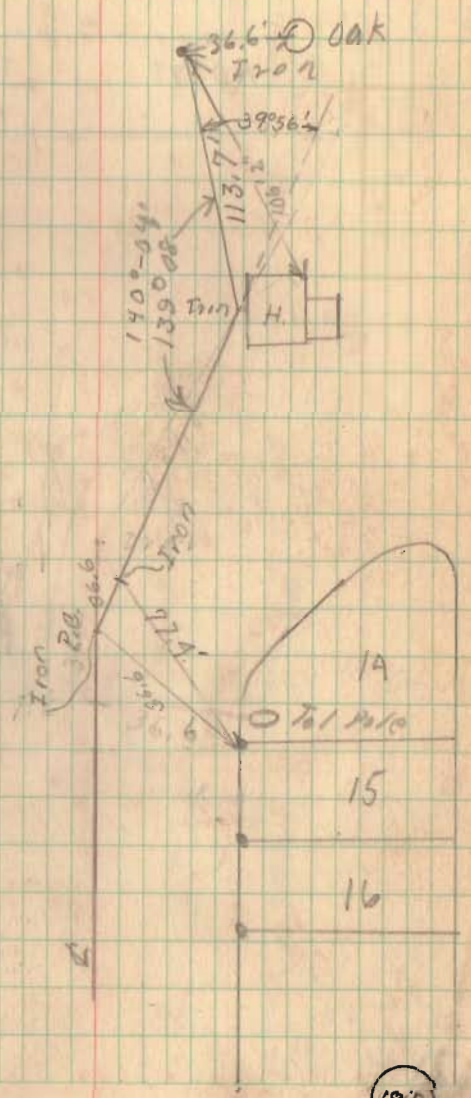


86+08

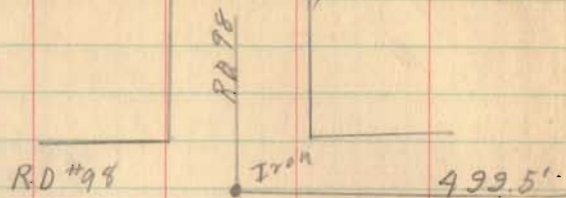
Roads

38 & 254

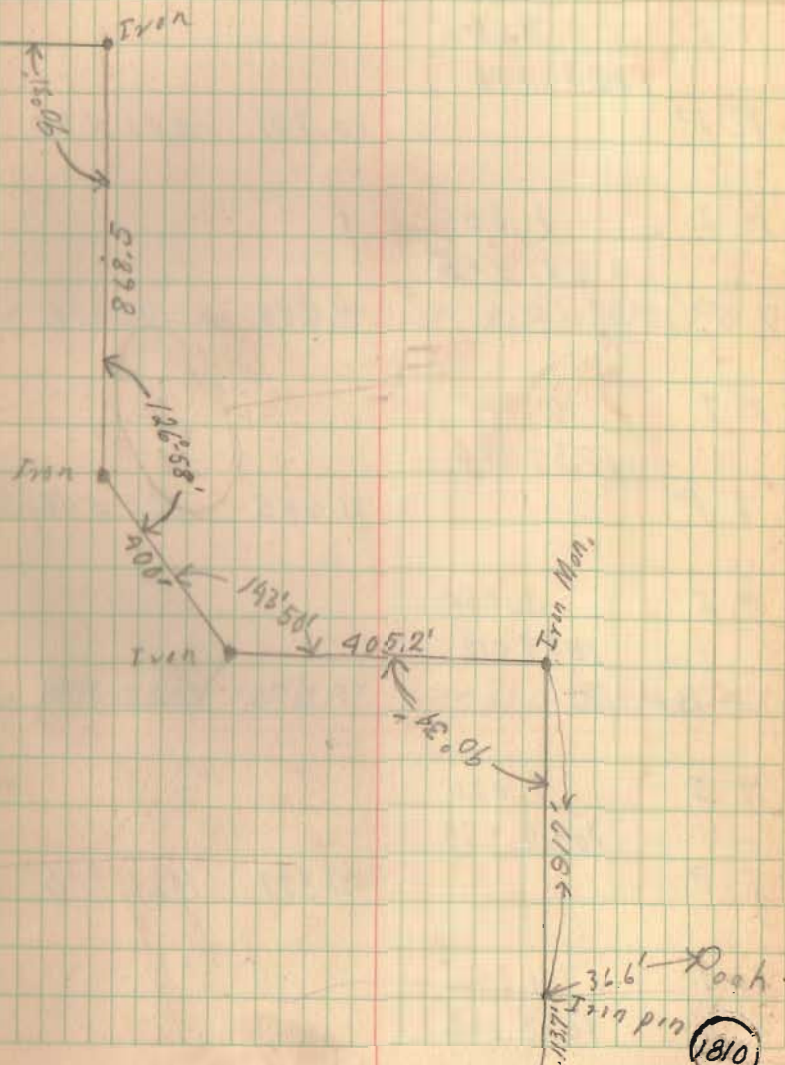
See pg. 40



01 Roads 38 & 254



10



INDEXED ON I

Read^a 38

July 6-39
Scott,

27+76

298' From 29+00

26+36

170.2 From Wickerham Fence
562.0 From Sta. 32+00

24+00 Monuments set - 2

$$\begin{array}{r} 32.00 \\ 26.36 \\ \hline 58.69 \end{array}$$

$$\begin{array}{r} 26.20 \\ 24.00 \\ \hline 226 \end{array}$$

13+00 Monuments set - 2

$$\begin{array}{r} 27.76 \\ 26.20 \\ \hline 1.40 \end{array}$$

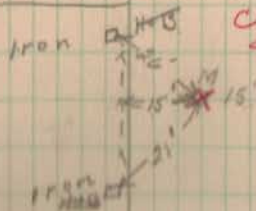
1+00 Monuments set - 2

0+30

0+00

23

Wickerham



Concrete R.W. Mon. Cof.
Set for this Survey
10-19-44 sec Book 80
#45ert. 660P

Black

NW Mutual
Life Ins Co.

32'-12" C.I.P.

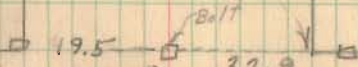
20+90

N 00° 00' W

32'-12" C.I.P.

27+40

← 81° 32' (163° 04')



N 15° 41' W

Sta. 130 Route 117

Sta. 130 + 58.20

0° 13' Right

Iron Spike

133+76.7 (see Plan

L-21)

N 15° 53' W

Read # 38

40+00 Monuments set -

32+00 Monuments set

24

40+70
Kilpatrick
Wickesham

40+72
69'



40+05

16" Cast Pipe
37+75

583.00 W

31+55
60'

31+39



Road = 38 + 254

(75+00) Monuments set

(66+07) Monuments set

65+07

(63+00) Monuments set

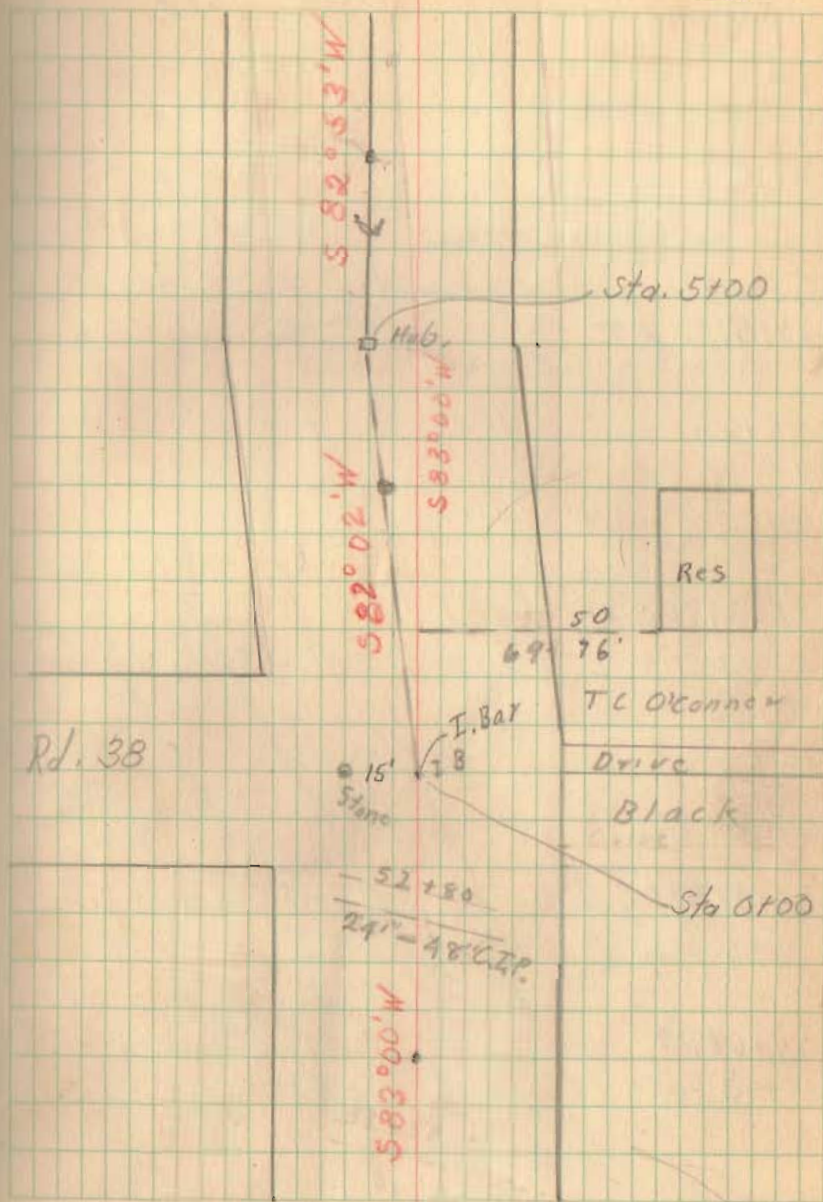
(61+07) Monuments set - (South side only)

60+07

(57+00) Monuments set.

(48+00)

25



Road # 254

88+44.92 (P.T.)
88+51.92 P.T.

Monument set - South side only

88+00

87+37.7 PG

(27+40.7 PC) Monument set - South side only

87+00

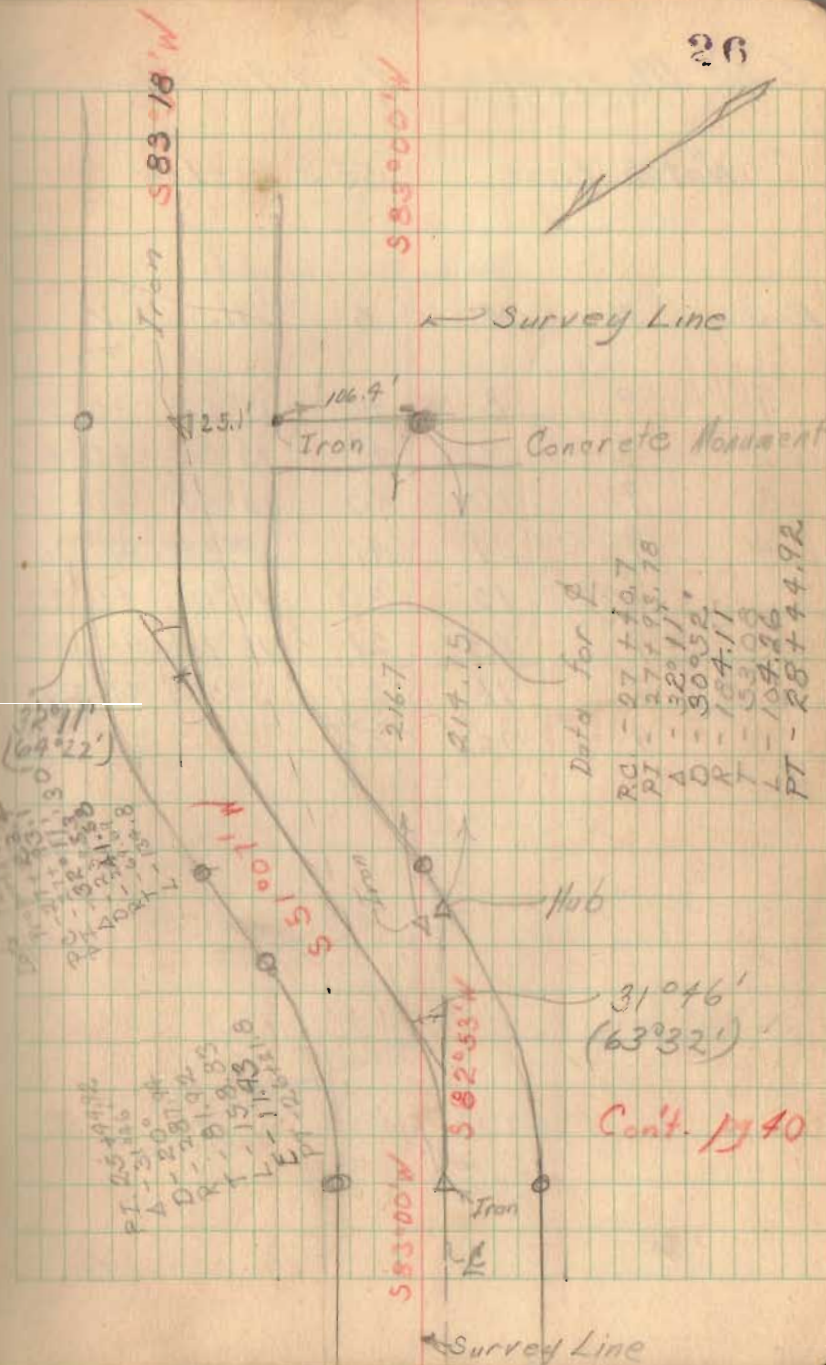
86+21.8

86+28.8 PT Monument set - South side only

84+69.97

84+63 PC Monuments set

26



Pl. #254

44+29.8 P.T. R/W Monuments set

41+31.1 P.I. R/W Monument set

38+06.1 P.C. (Iron) R/W Monuments set
95+13.1

31+92.3 P.I. (Iron)

28+42.8 P.T. (Iron) R/W Monuments set (both side only)

From pg. 26

86.9

47

