

(Contd. from F.B. 682 - pg. 73)

Jefferson Twp. - Perry Twp.  
South-North Survey

Note: - Carved stone (Jeff. - Perry - Monroe - Zone)

As per F.B. 682. pg. 73. found and used as South end and starting point of survey. Stone and 2" d. 4' High pipe - F.B. 682 - pg. 73 constitute alignment for this survey, which was projected northwardly, double-centering all  $\pi$  points. using triangulation type large targets where distances were large.

No attempt made to station the survey. The Survey, however, is tied to stations of all available intersecting roads and to a survey of Rd. 129 (F.B. 682. 7-13) 1949 at, in general, points (Irons) nearest to Road 129.

checks on Alignment

Nothing found of record in subject area except:

(1) At Rd. 153 = Iron - same line as A. Twp. Stone and pipe.

(2) At Rd. 2 - F.B. 579 - pg. 60

(Nothing of record) (3) at Rd. 127 - F.B. 560 - pg. 40

Note: - also see "Aug. 49." No scale Dwg. in Drawer-R showing various ties to intersecting roads and nearby Rd. 129.

(SEE F.B. 682 - Pg. 73 re. S. end and start.)

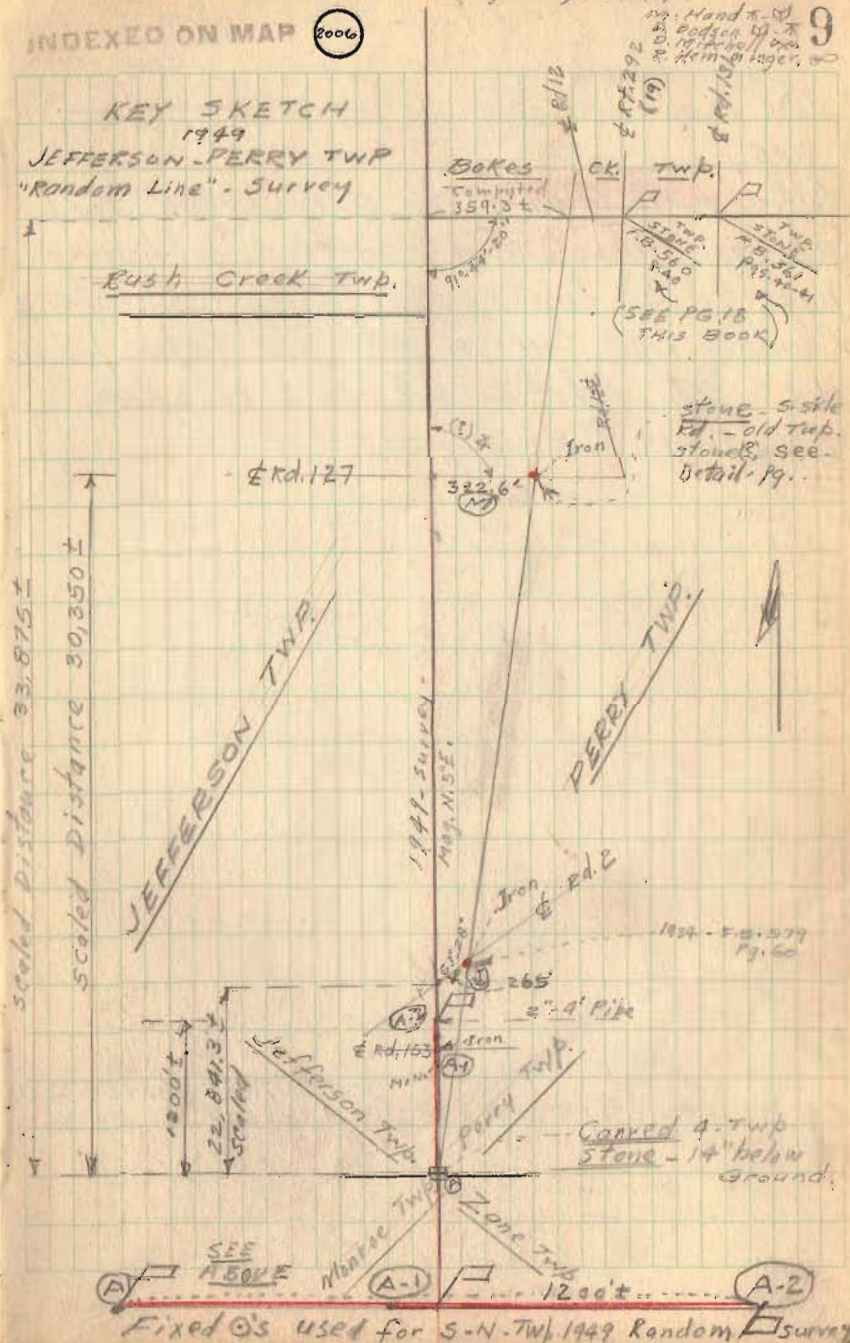
July - Aug. 1949

INDEXED ON MAP 2006

KEY SKETCH

1949

JEFFERSON - PERRY TWP  
"Random Line" - Survey



Handwritten notes in the top right corner: 'Handwritten notes', 'in pages 19, 20, 21, 22, 23, 24, 25, 26, 27, 28, 29, 30, 31, 32, 33, 34, 35, 36, 37, 38, 39, 40, 41, 42, 43, 44, 45, 46, 47, 48, 49, 50, 51, 52, 53, 54, 55, 56, 57, 58, 59, 60, 61, 62, 63, 64, 65, 66, 67, 68, 69, 70, 71, 72, 73, 74, 75, 76, 77, 78, 79, 80, 81, 82, 83, 84, 85, 86, 87, 88, 89, 90, 91, 92, 93, 94, 95, 96, 97, 98, 99, 100'. A large number '9' is written in the top right corner.

stone site  
F.B. - old Twp.  
stones, see  
Detail - Pg. .

Iron  
Rd. 2

322.6'

Rd. 127

Scaled Distance 33,875 ±  
Scaled Distance 30,350 ±

JEFFERSON TWP.

PERRY TWP.

JEFFERSON TWP.

PERRY TWP.

Monroe Twp.

Zone Twp.

B

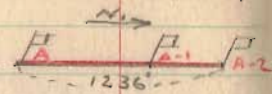
A-1

A-2

Fixed O's used for S-N-TWP. 1949 Random Survey

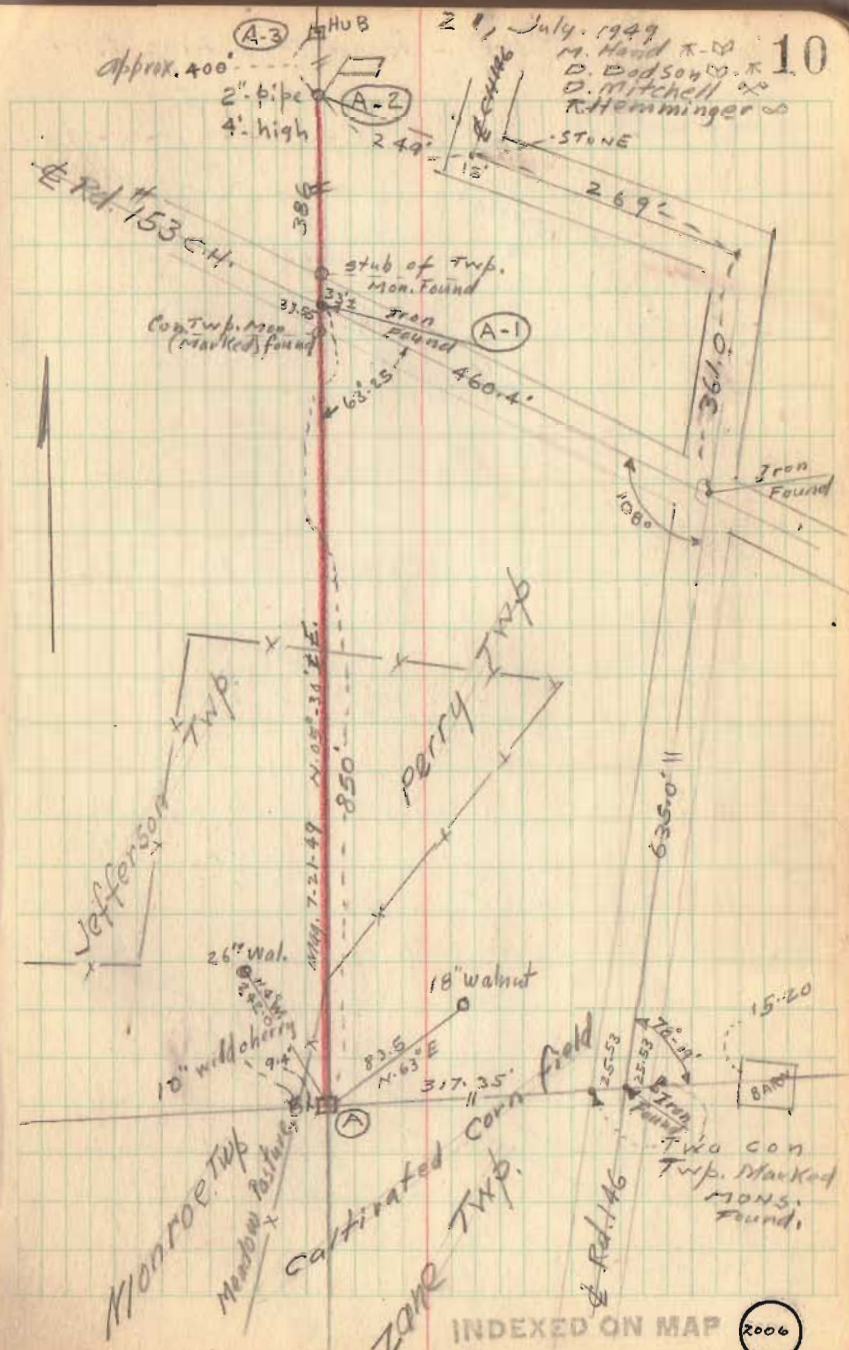
Jeff. Perry Twp. S.-N. Random Survey

The 1200+ line - opposite page - WAS?

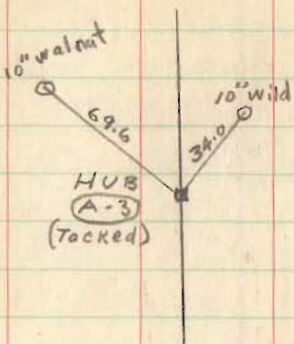


Carried Northward to Bokes Creek Twp. (approx. 34,000') as per method outlined on page 9. The first opportunity to compare Random line Survey with <sup>and</sup> old Twp. points was at Rd. #2 23,000' ± N. of A - see page 9 this book.

References (Area-A. [A-1]) F.B. 451 - Pgs. 29-32 33  
 " " 573. " 34-36

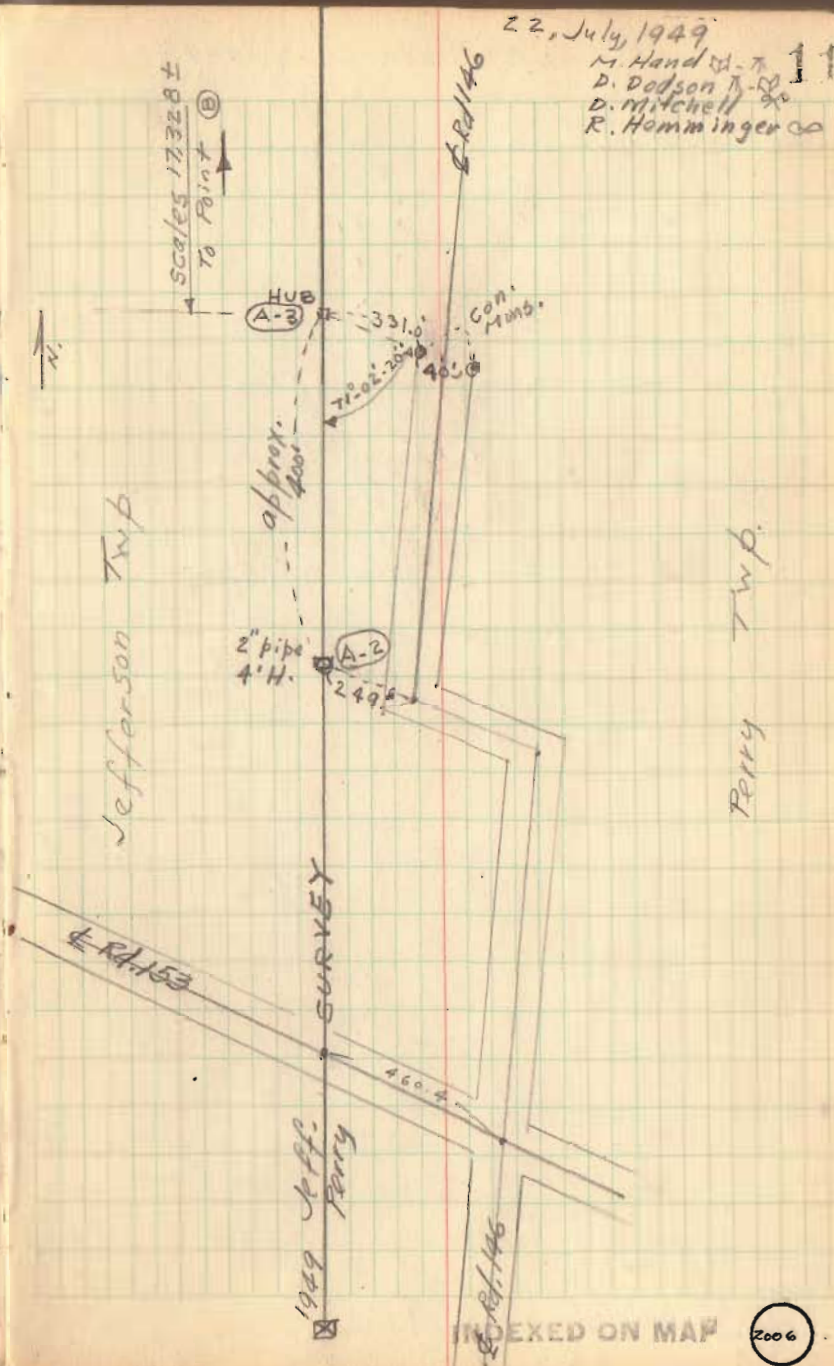


Jeff. - Perry Twp. Line 1949



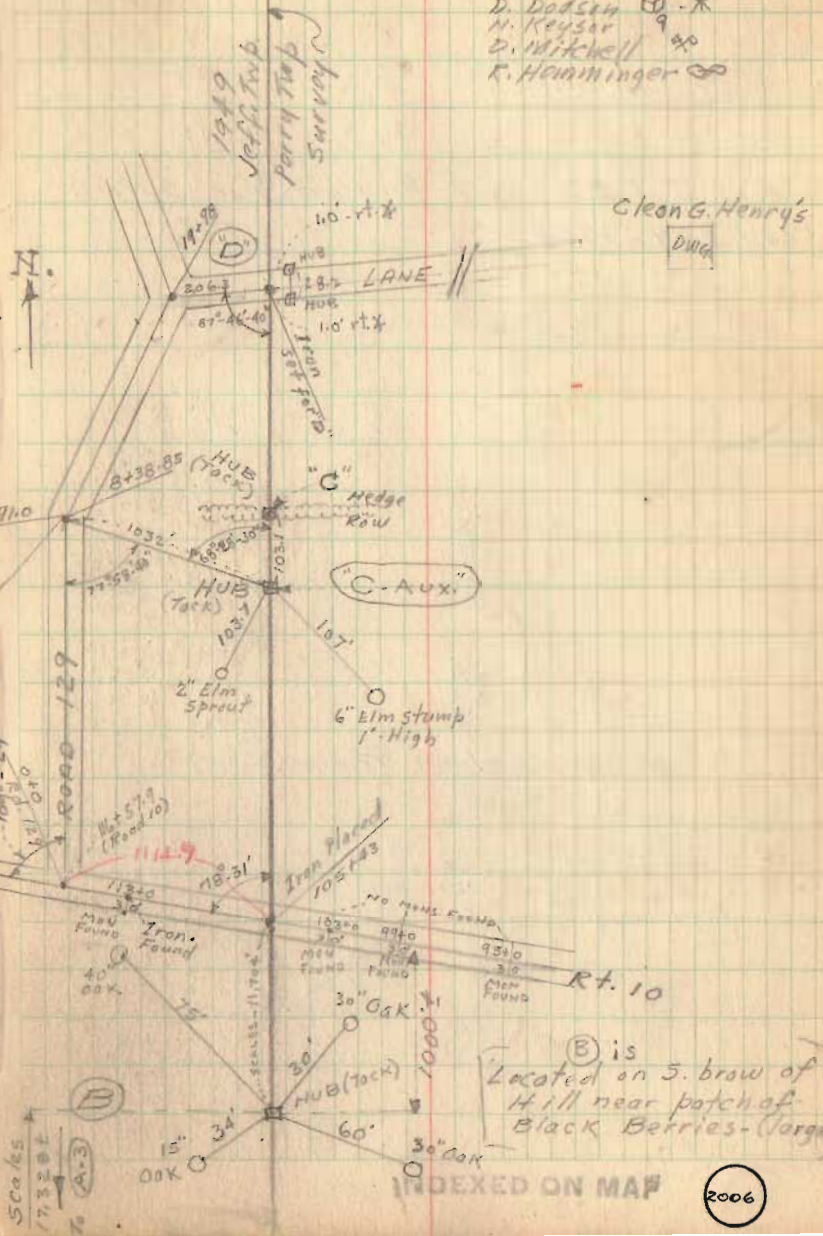
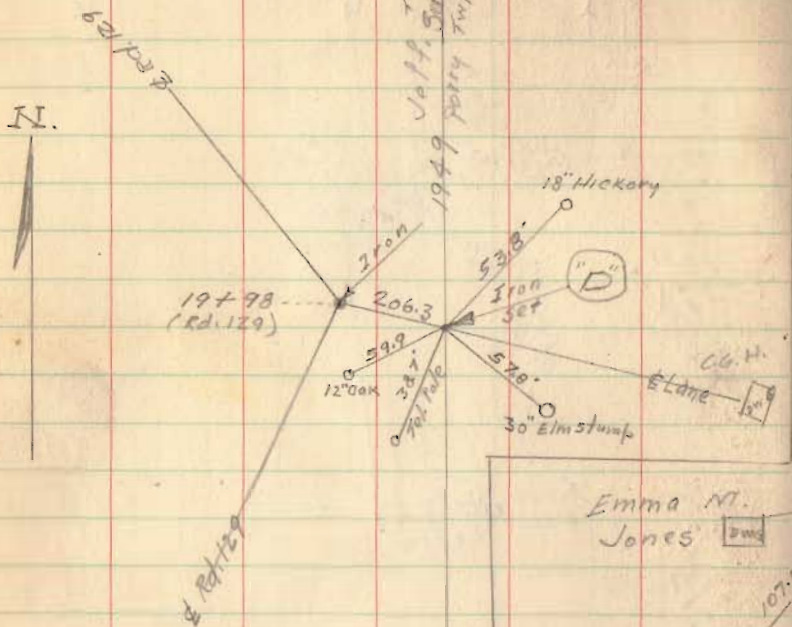
22, July, 1949

M. Hand  
D. Dodson  
D. Mitchell  
R. Homminger



Jeff. - Perry Line 1949

12



Clean G. Henry's  
Dwg.

Emma M.  
Jones Dwg.

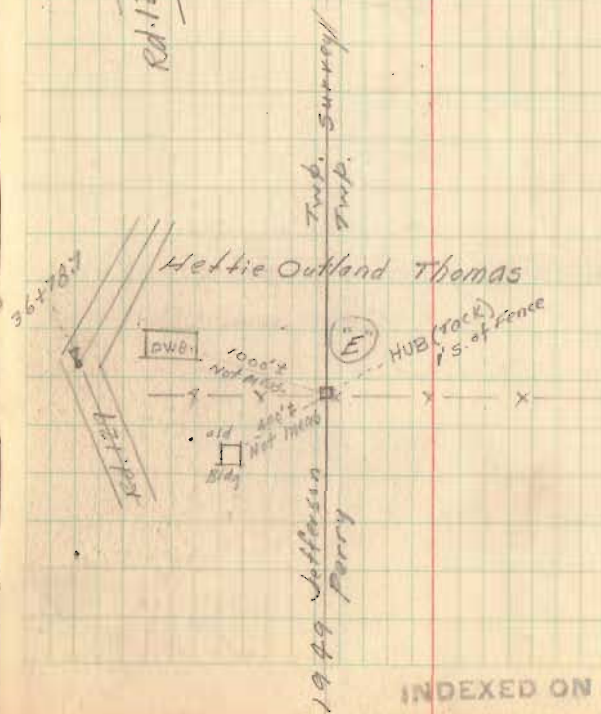
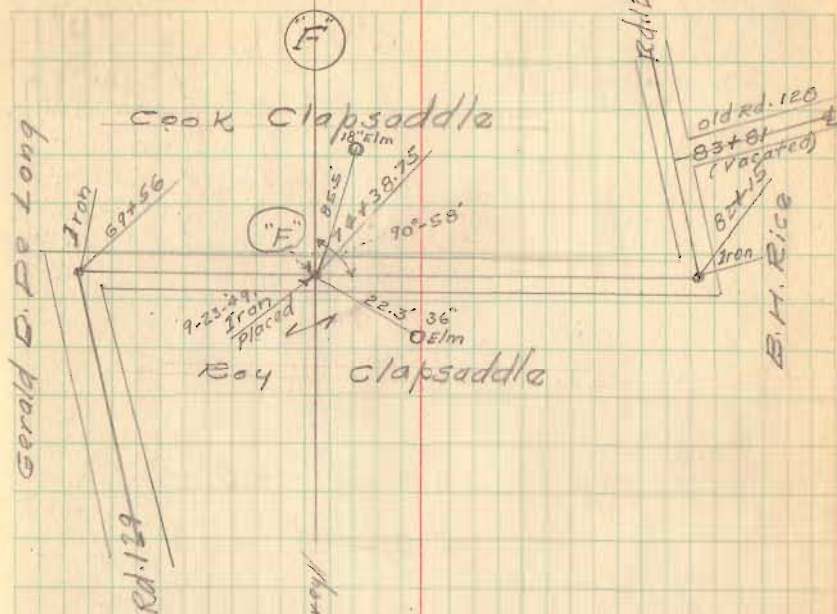
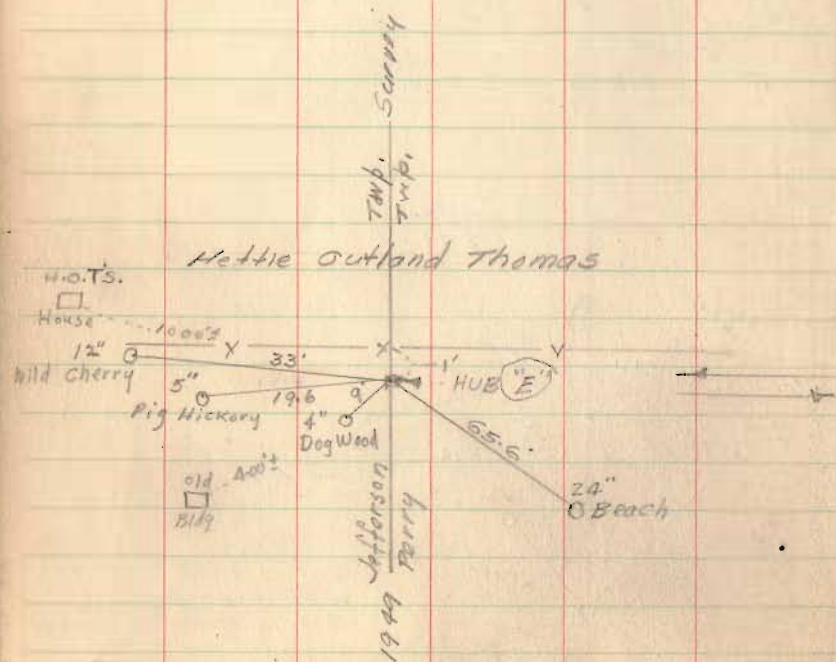
ⓑ is  
Located on S. brow of  
Hill near patch of  
Black Berries - (large)

INDEXED ON MAP

2006

Jefferson - Perry Twp. Line 1949

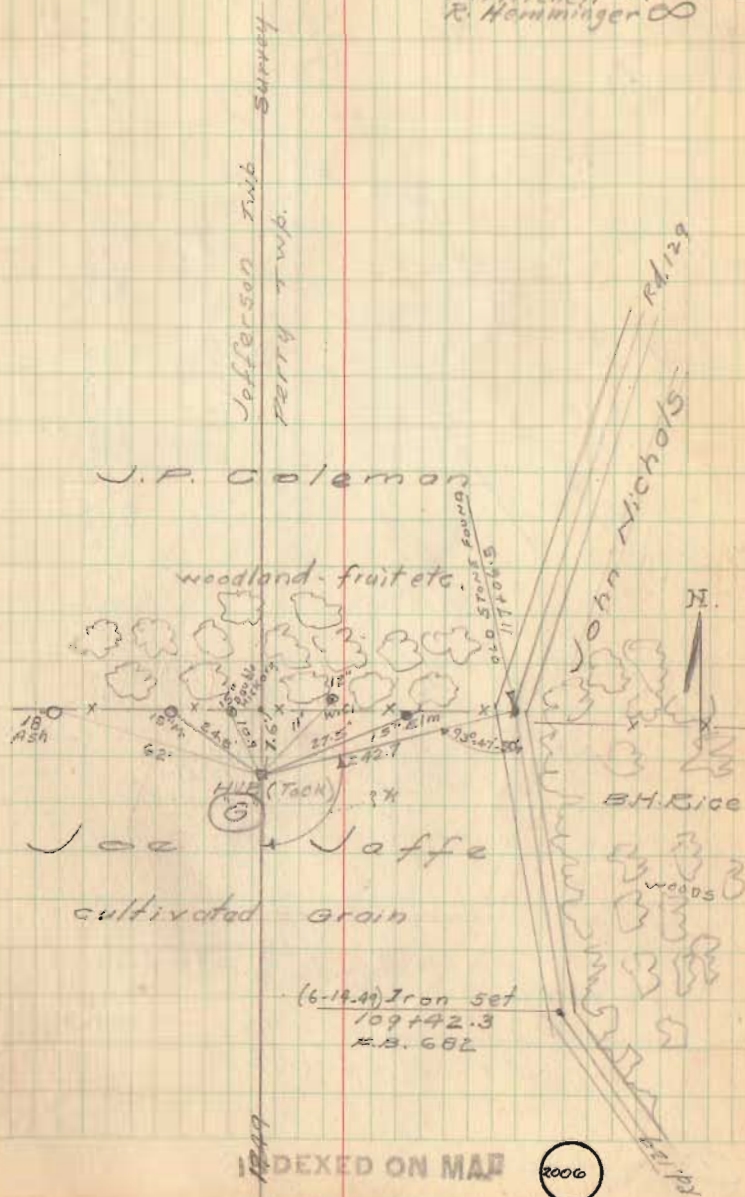
SEE F.D. 682 - pg. 7 - forward for Survey  
Road 129 - 1949.



INDEXED ON MAP

SEE F.B. 682 - pg. 12 - for sta. 117+06.5 (rd. 129)

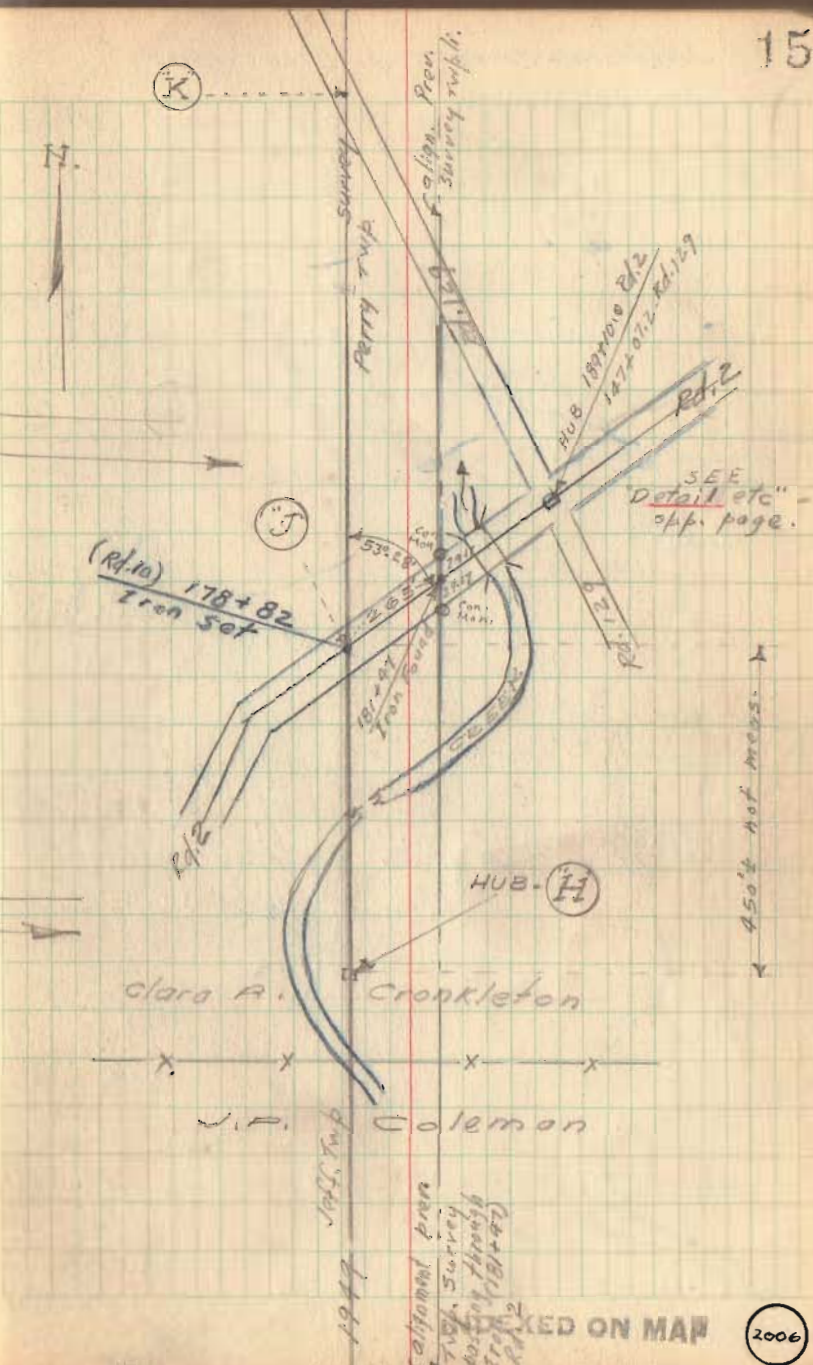
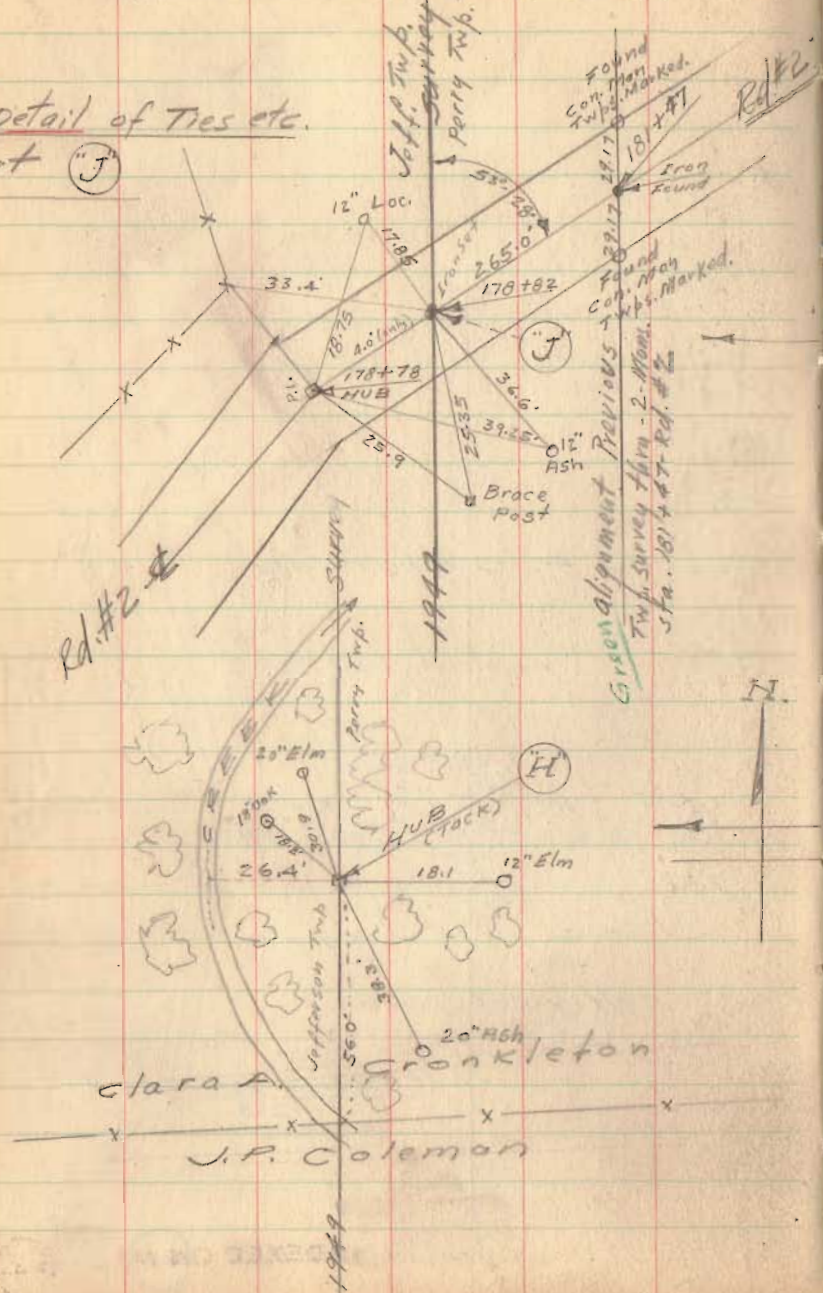
August - 1949  
 W. Haydel  
 P. Dodson  
 P. Mitchell  
 R. Hamming



INDEXED ON MAP

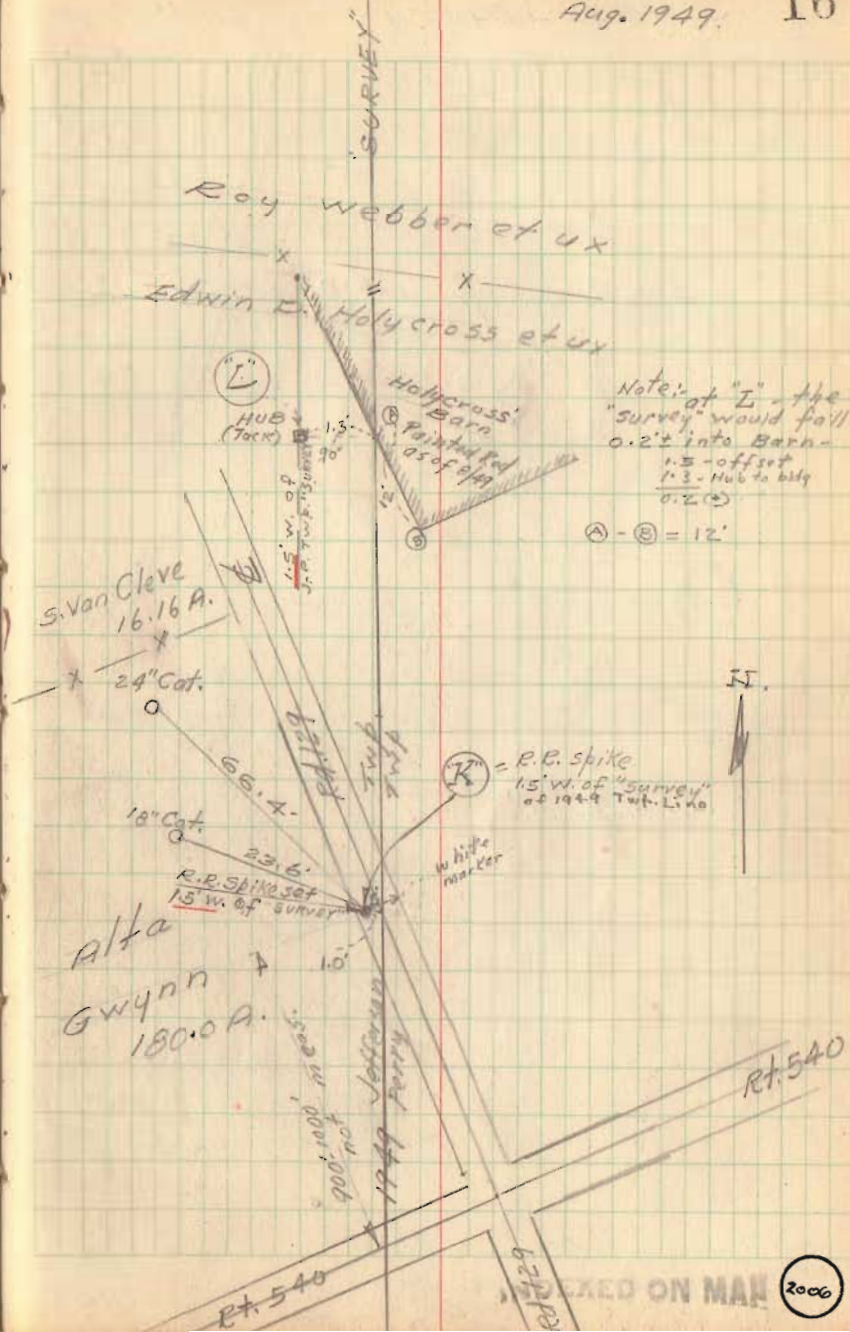
2006

Detail of Ties etc.  
at (J)



SEE Page 17 for Detail at (L)

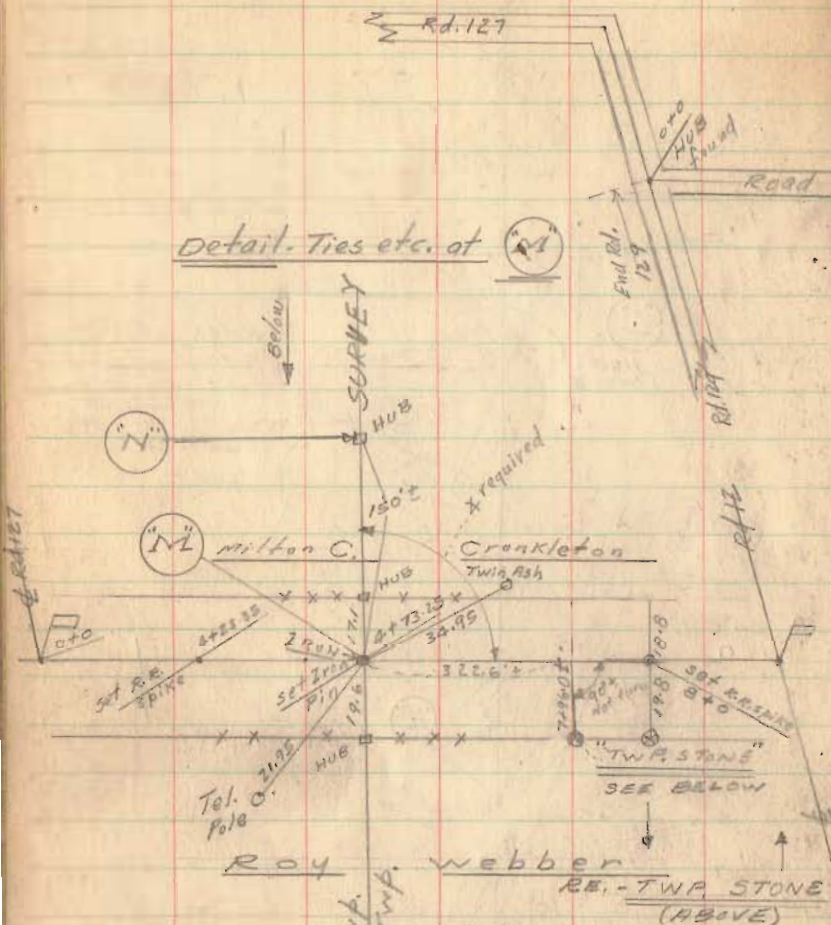
Note: "K" set with  $\pi$  at "L" - sighting South to "J"





Jefferson-Perry Twp. Line 1949

Detail. Ties etc. at

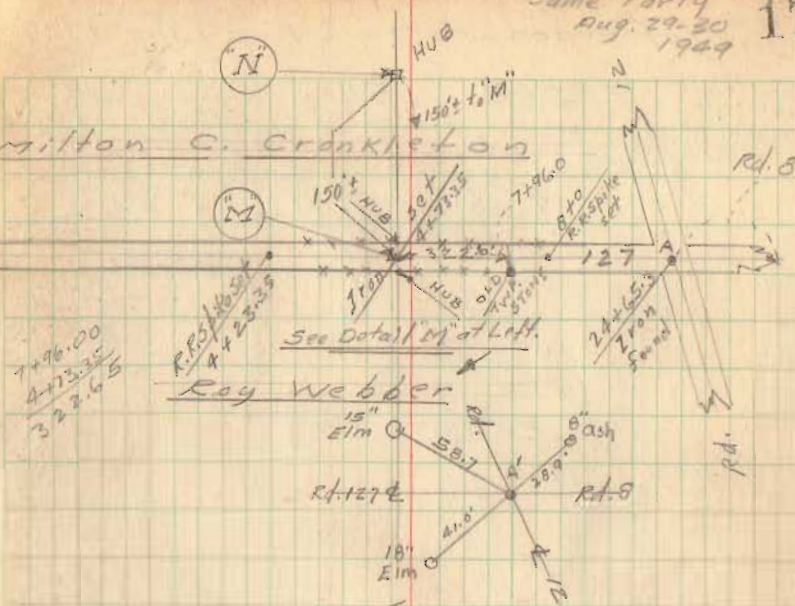


Ray Webber  
RE. - TWP. STONE  
(ABOVE)

This stone sets 10" above ground - is chiseled sharp (sharp with top line) - Messrs. Milton C. Crankleton and Ray Webber identified stone (8-30-49) as being Twp. Stone etc. always in their recollection - Morgan Hand.

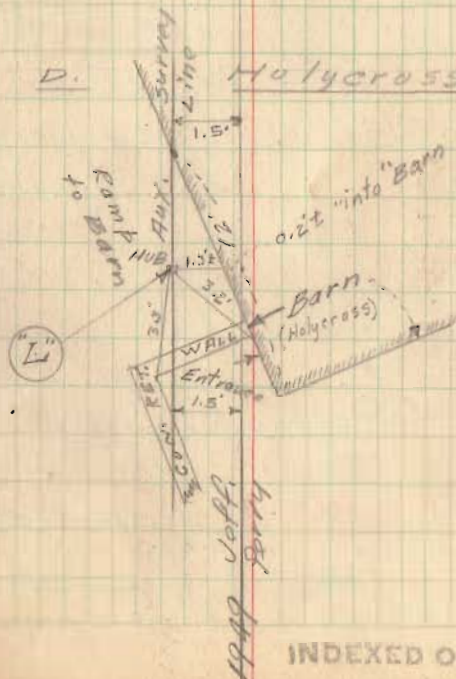
Same Party  
Aug. 29-30  
1949 17

Milton C. Crankleton

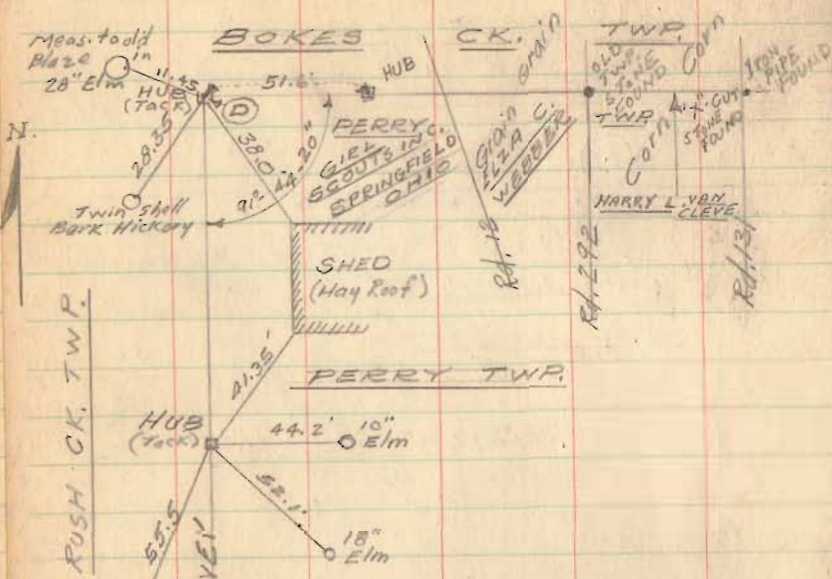


Ray Webber

Edwin D. Mulycross

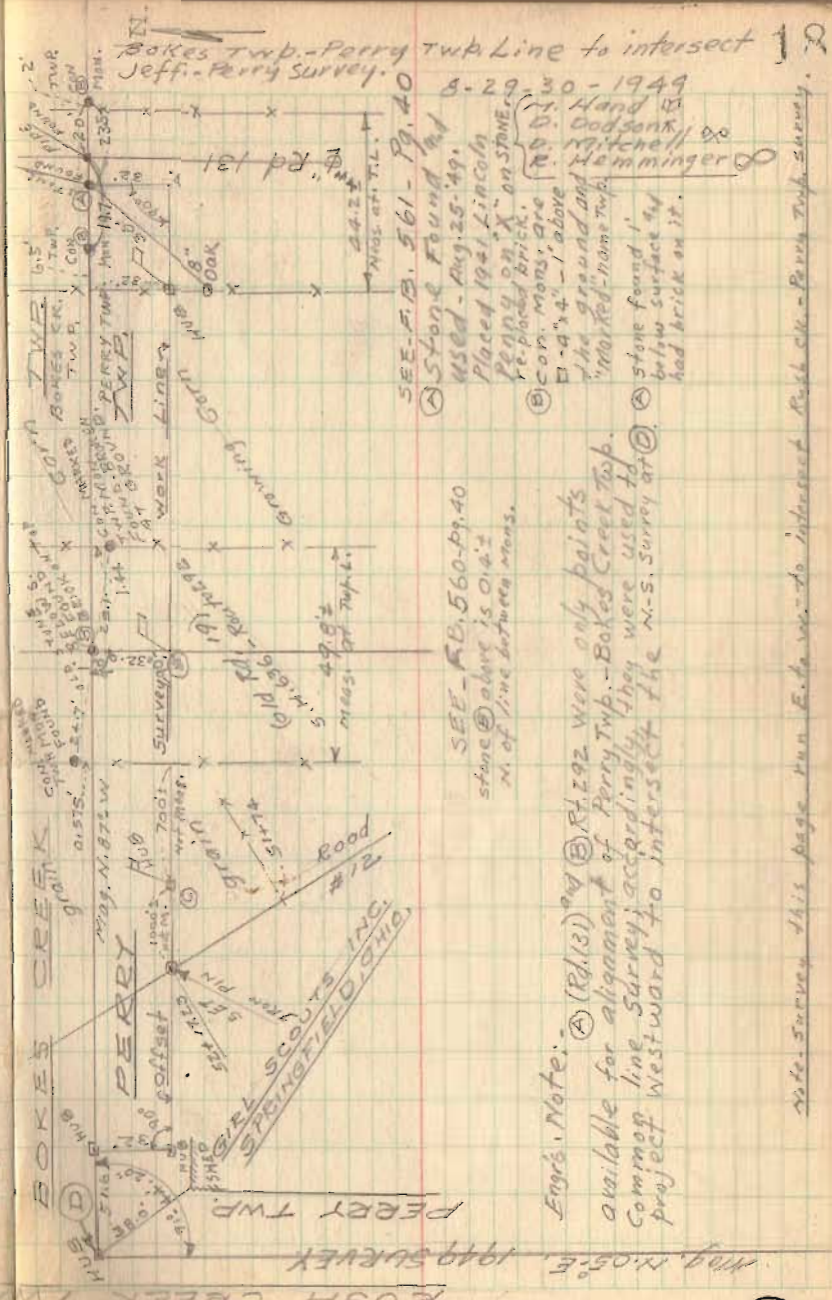


# Jefferson - Perry Twp. Line 1949



Note: A "KEY MAP" 1"=1000'  
 Was made of Survey -  
 see Files - as a work sheet.  
 N-S alignment and  
 E-W (pg. 12) determined  
 by double-centering -  
 heavy precision  
 # used. Large  
 (D) Geodetic Survey  
 "targets" used - some  
 shots being 2 miles ±  
 in length. M.H.

P.S. The relative accuracy of N.S. line was greatly  
 aided by having the same interested party persons  
 throughout the survey. M.H.



SEE P.B. 561 - Pg. 40  
 Stone Found by 8-29-30-1949  
 Used - Aug. 25-49.  
 Placed 1941 Lincoln  
 Perry on "X" on stone.  
 Con. Mon. are  
 1'-4" - 1' above  
 the ground and  
 "marked" name of  
 stone found 1'  
 below surface of  
 had brick on it.

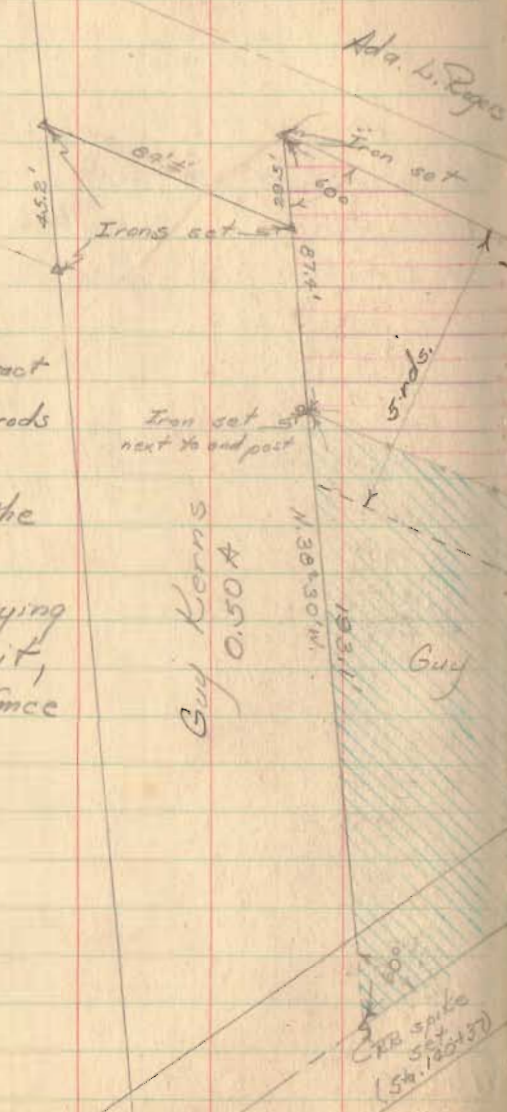
SEE - P.B. 560 - Pg. 40  
 stone above is 0.14' ±  
 N. of line between mans.

Eng's. Note: (A) (R.I. 131) and (B) (R.I. 292) were only points  
 available for alignment of Perry Twp. - Bokes Creek Twp.  
 Common line Survey, accordingly they were used to  
 project westward to intersect the N.S. Survey at (C)

Note: Survey this page two E. to west to intersect Bokes ck. - Perry Twp. survey.

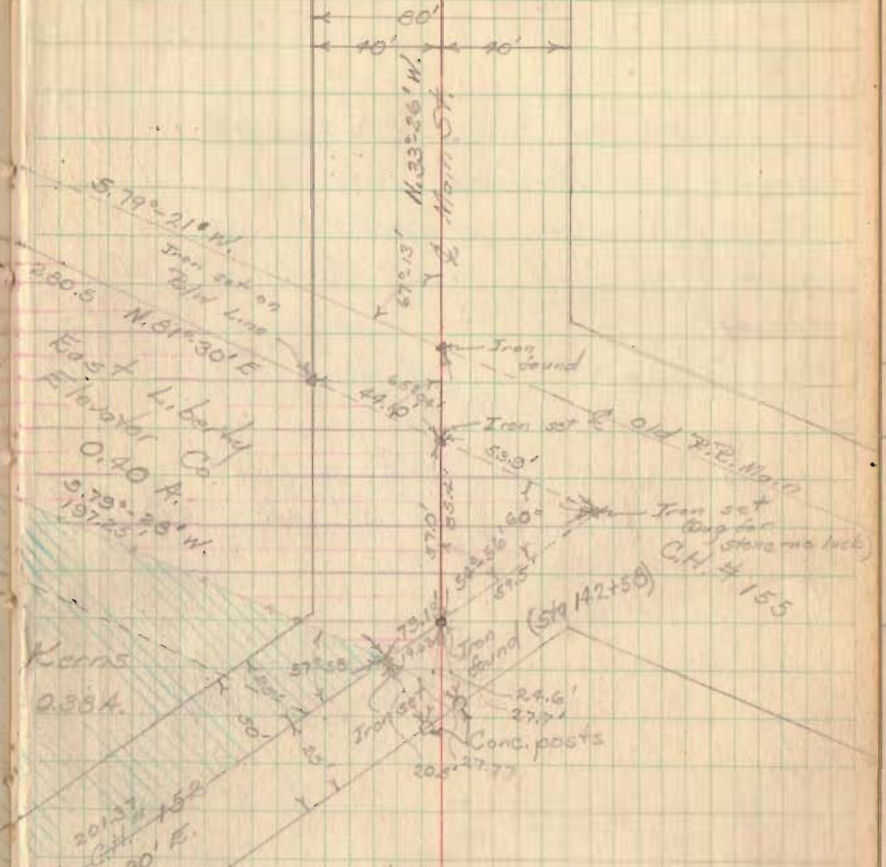
East Liberty Elevator Co.  
 V.M.S. 4689  
 Perry Twp.

Original deed shows Elevator tract to be a strip 5 rods wide off the north side of the larger tract. Guy Kerns is occupying a portion of it, so used his fence as the line.



Party -  
 C. Keyser  
 B. Dodson  
 V. Detrick

27



Notes:

- CH # 152 - F8 55.5 pg 72-3
- CH # 155 - F8 64.5 pg 30
- T + O C B y - A-29

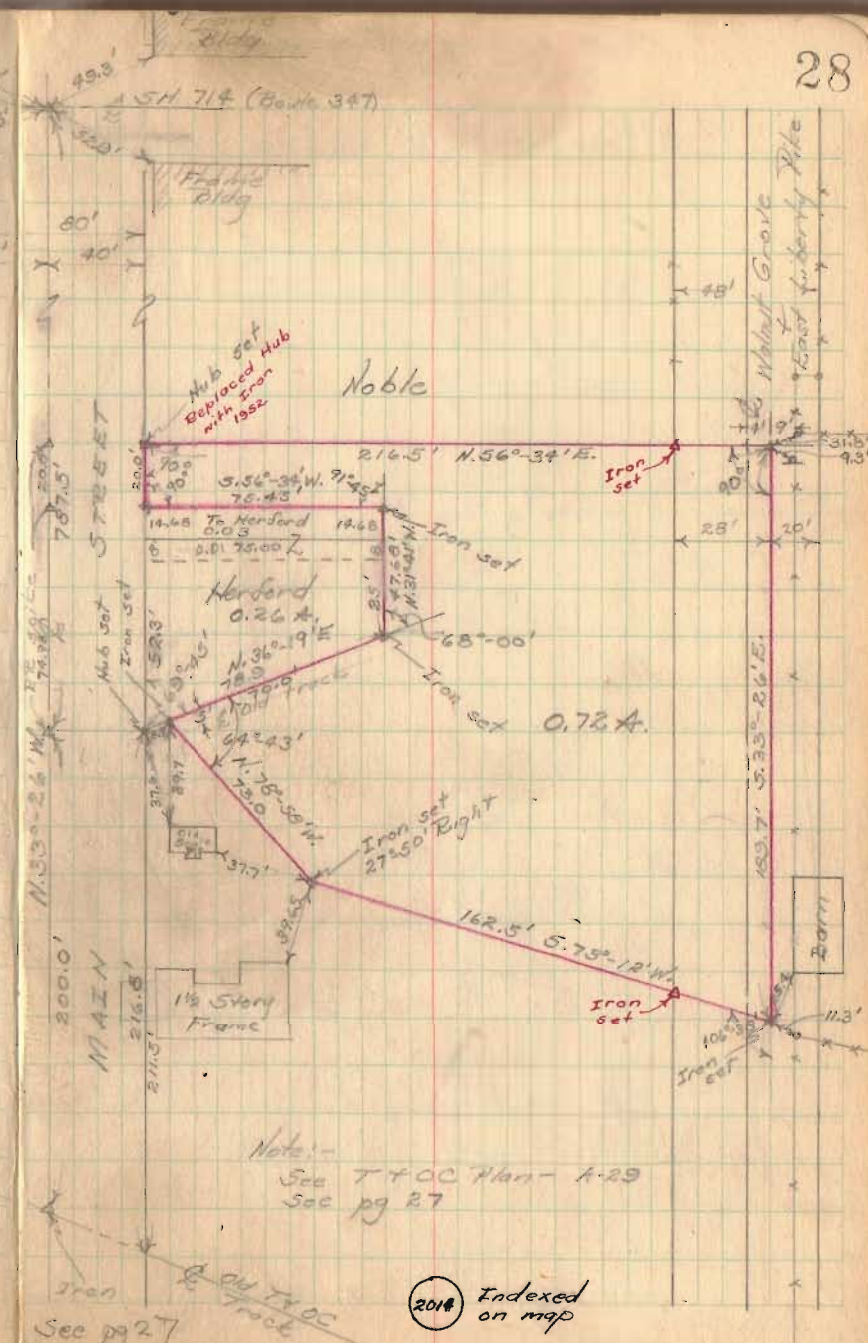
2019 Indexed on map

East Liberty Elev. Co.  
(cont'd)

Found the blacksmith shop on Herford was on the Elevator property, so gave Herford 14.68' feet as shown.

See next page for detail →

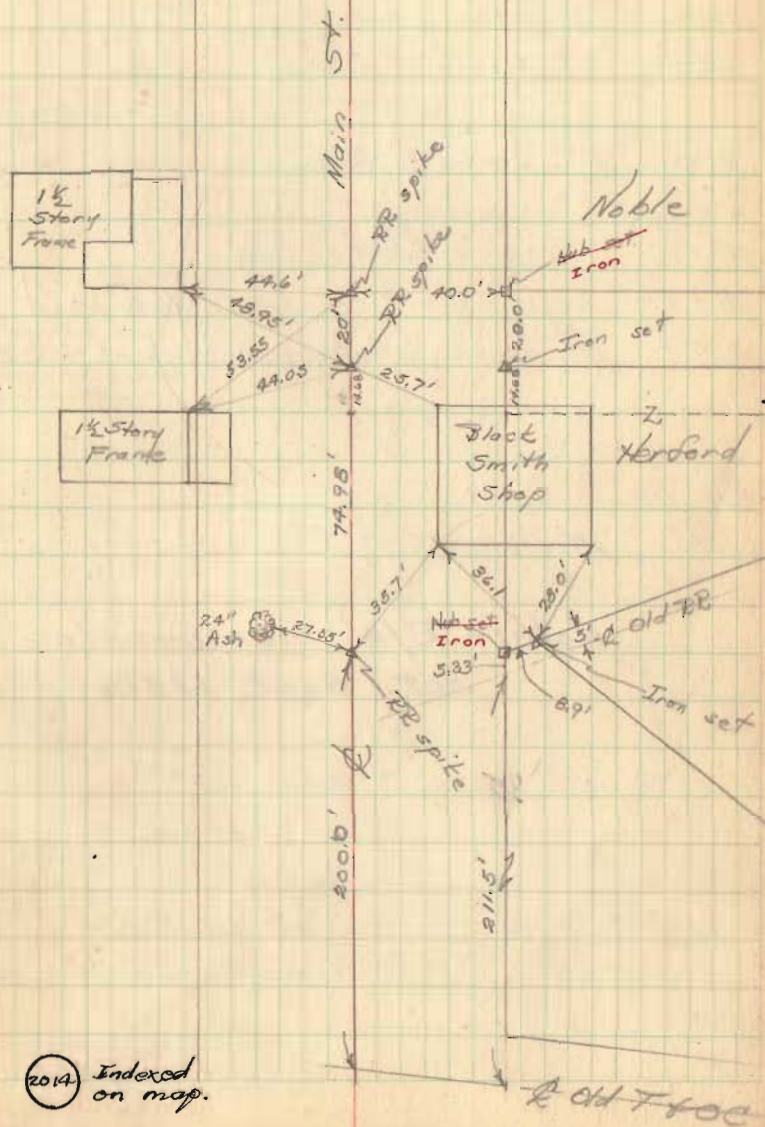
See pg. 72-73  
See pg 74 for prop alley



East Liberty Elev. Co.  
(Contd)

Witnesses to various points

29



(2014) Indexed  
on map.

CH # 166 - Surrey

Monroe Twp - V.M.S 4492

Staked 40' wide by

authority of Monroe Twp Trustees

25+00 RR spike + hub 23+92.25 Stone (Hub right)

23+00 RR spike + hubs

17+00 RR spike + hubs

12+00 RR spike (Hubs set)

11+50.4 Angle  $70^{\circ}47'40''$  Left (Hubs set)

11+00 RR spike (Hubs set)

7+00 RR spike (Hub lost only)

**Note: - R/W monuments  
set. Sept. 1950.**

0+40 RR spike + hubs set

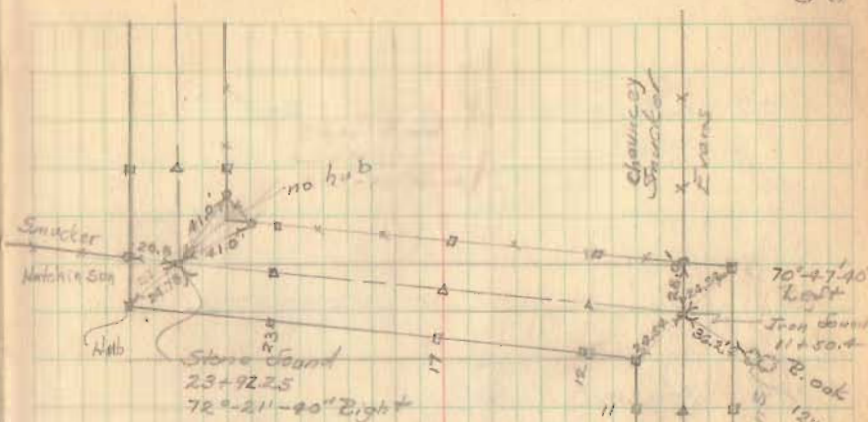
Note: See FB 618 pg 12-14  
FB 521 pg 50-53

G. Keyser  
D. Dodson

V. Detrick  
H. Keyser

Mar. 20, 1950  
Cloudy - chilly

30



NOTE: STA. 23+92.25  
DID NOT FIND STONE.  
SET  $\frac{5}{8}$ " x 30" REBAR  
(5-7-1953) D.E. GILBERT  
REG. SUR. NO. 5402

7+00 C. S. Hutchinson et al  
Earl E. Stuart

N. 16° 04'

42' - this  
circle set  
back +  
also  
right poles

Harry

0+40

Apparent

56° 55'

CH 171

Hub 0+00

30' Maples

2695

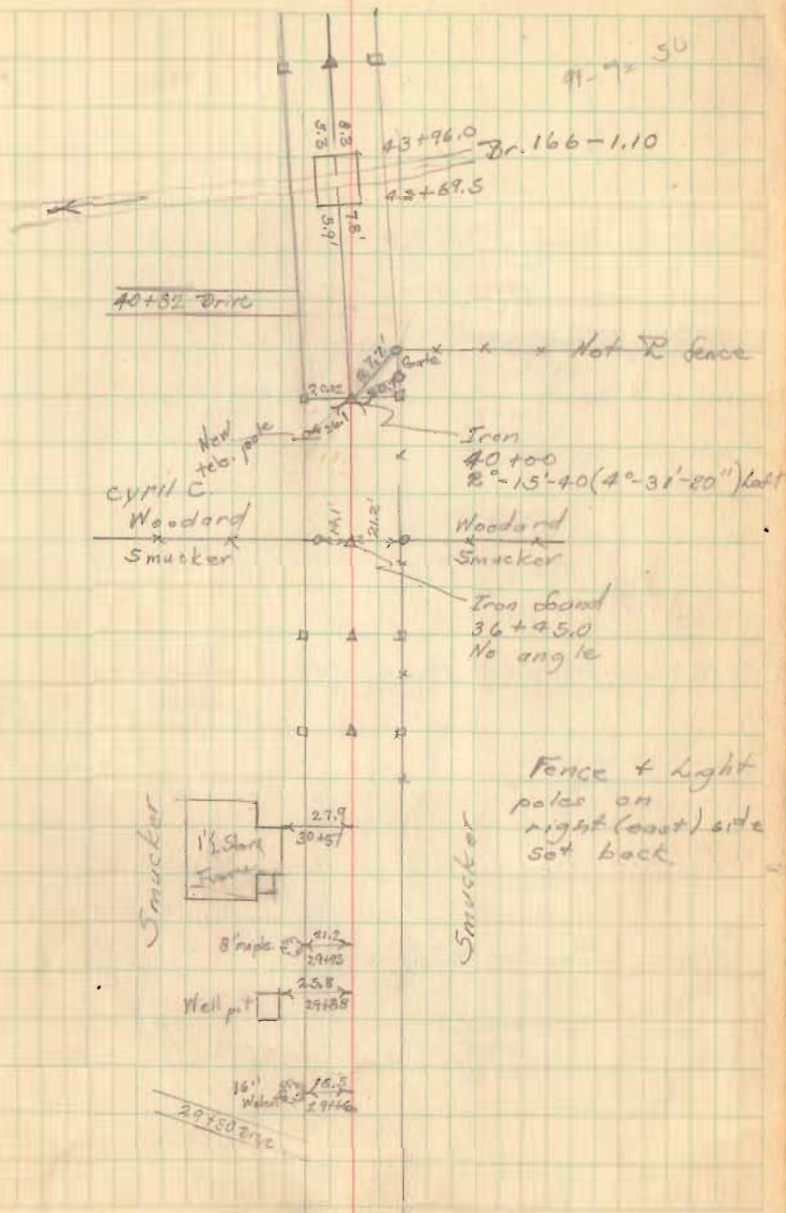
INDEXED ON MAP

43+00 RR spike & Hubs set

40+00 Iron set & Hubs

36+00 RR spike & Hubs

31+00 RR spike & Hubs



56+30 Iron + hubs set

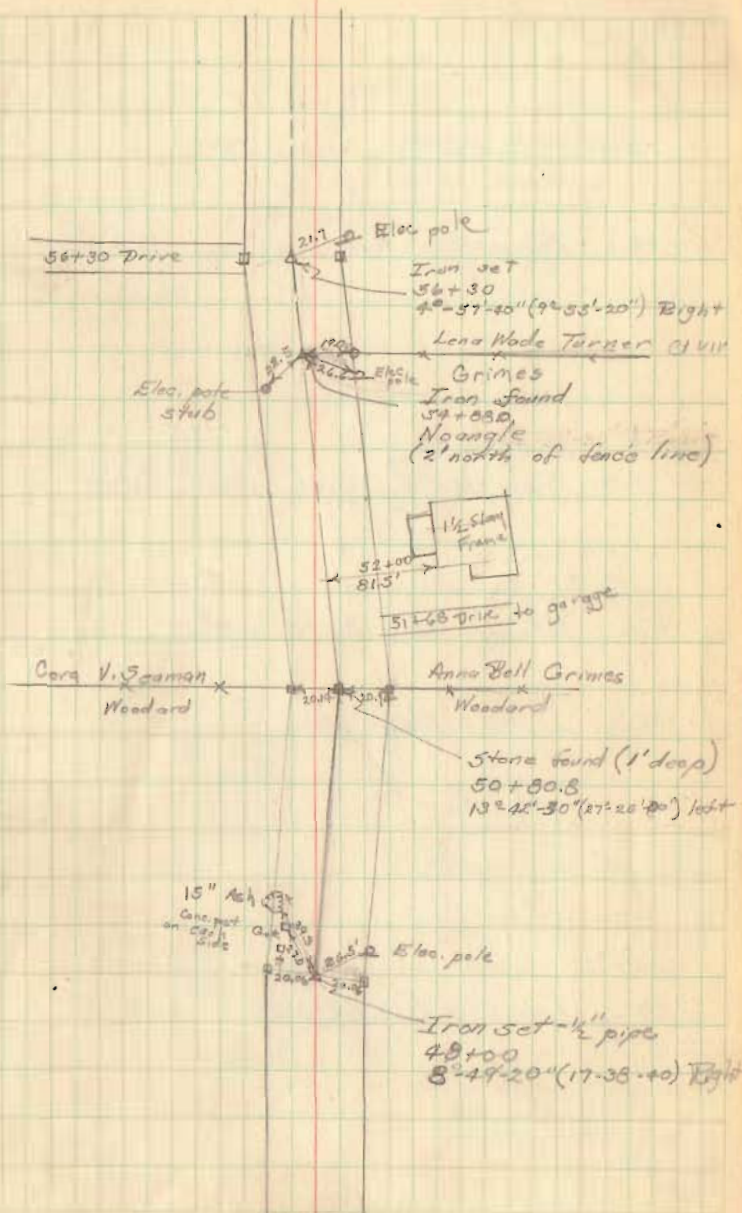
54+88.0 Iron set + hubs set

50+80.8 Stone + Hubs set

48+00 Iron + Hubs set

Mar 28, 1950

31A





75.0  
1.2

CH # 166 (contd)

See FB 558 pg 17 for survey  
of SH 607.

71+75 RR spike - Hubs set

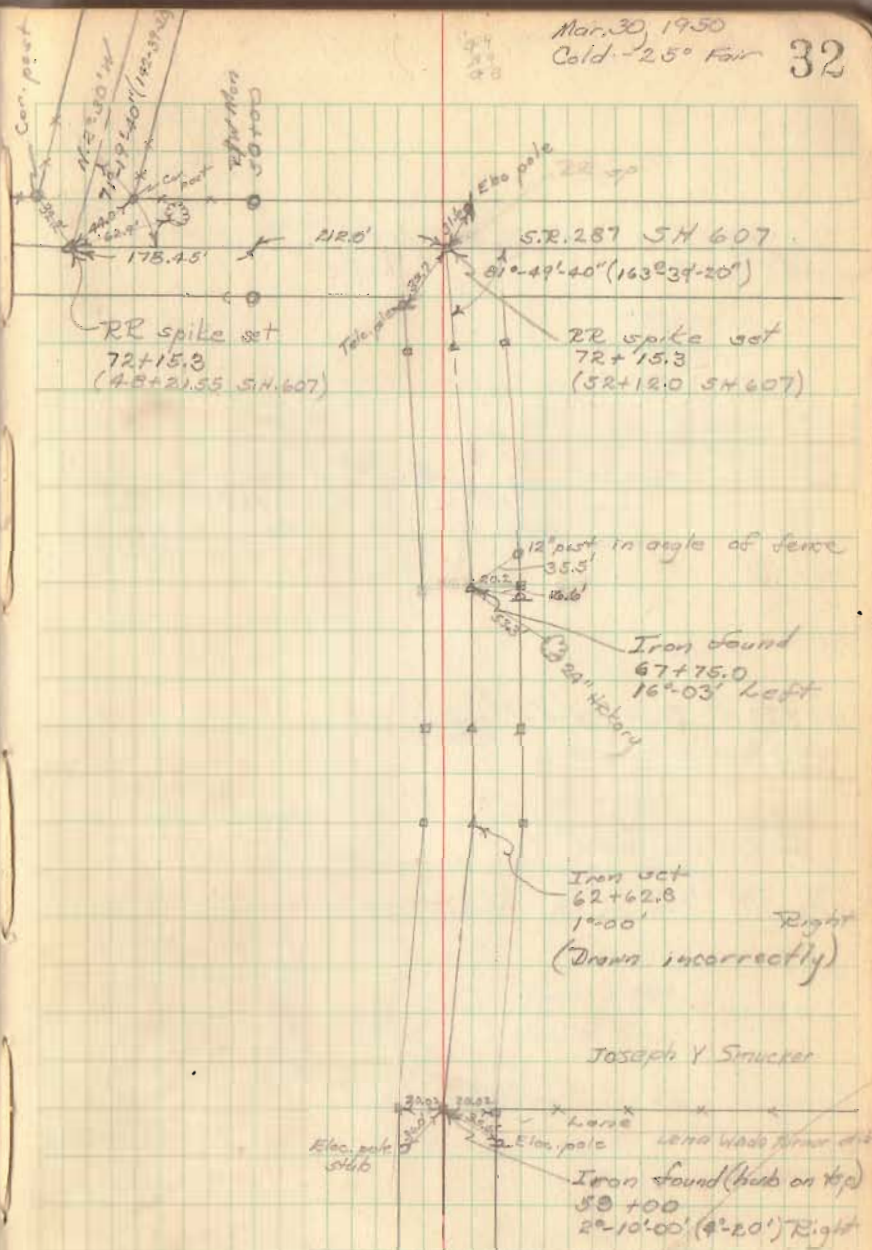
67+75.0 Iron found - Hubs set (Right only)

65+00 RR spike - Hubs set

62+62.8 Iron - Hubs set

59+00 Iron found (Hub on top) - hubs set

Mar. 30, 1950  
Cold - 25° Fair 32



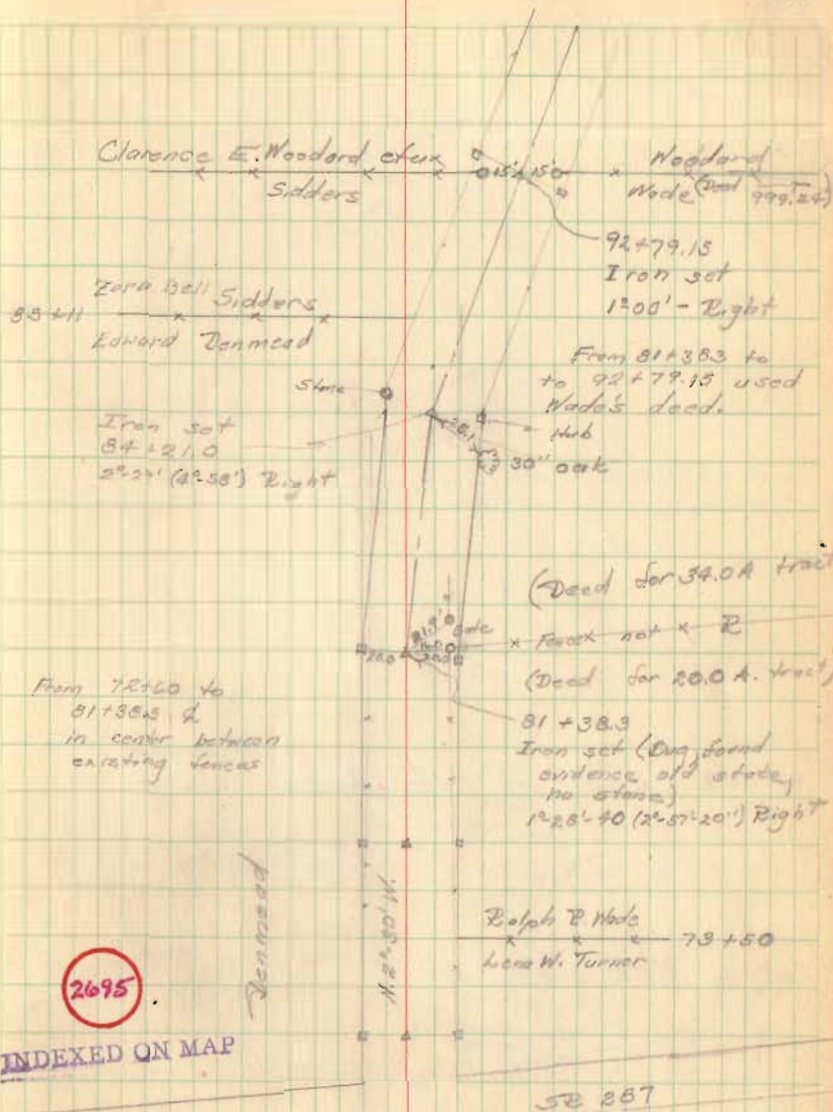
92+79.15 Iron set - Hubs set

84+21.0 Iron - large stone with cross on top set with x on top - left side Hub - right side

81+38.3 Iron set - hubs set

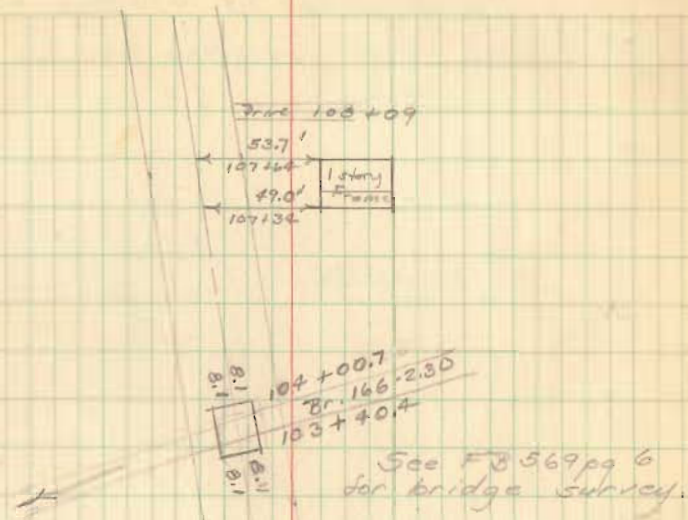
78+00 RR spike - Hubs set

72+60 RR spike - Hubs set



97+20.2 Iron set - No hubs

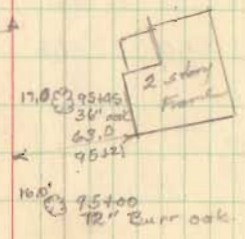
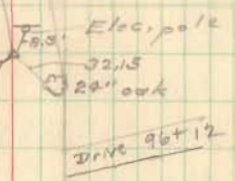
96+00 RR spike set



See Curve Data next pg. 35

Trans set  
 79°00'40" (98°01'20") left  
 97+20.2

RR spike set



92+78.15

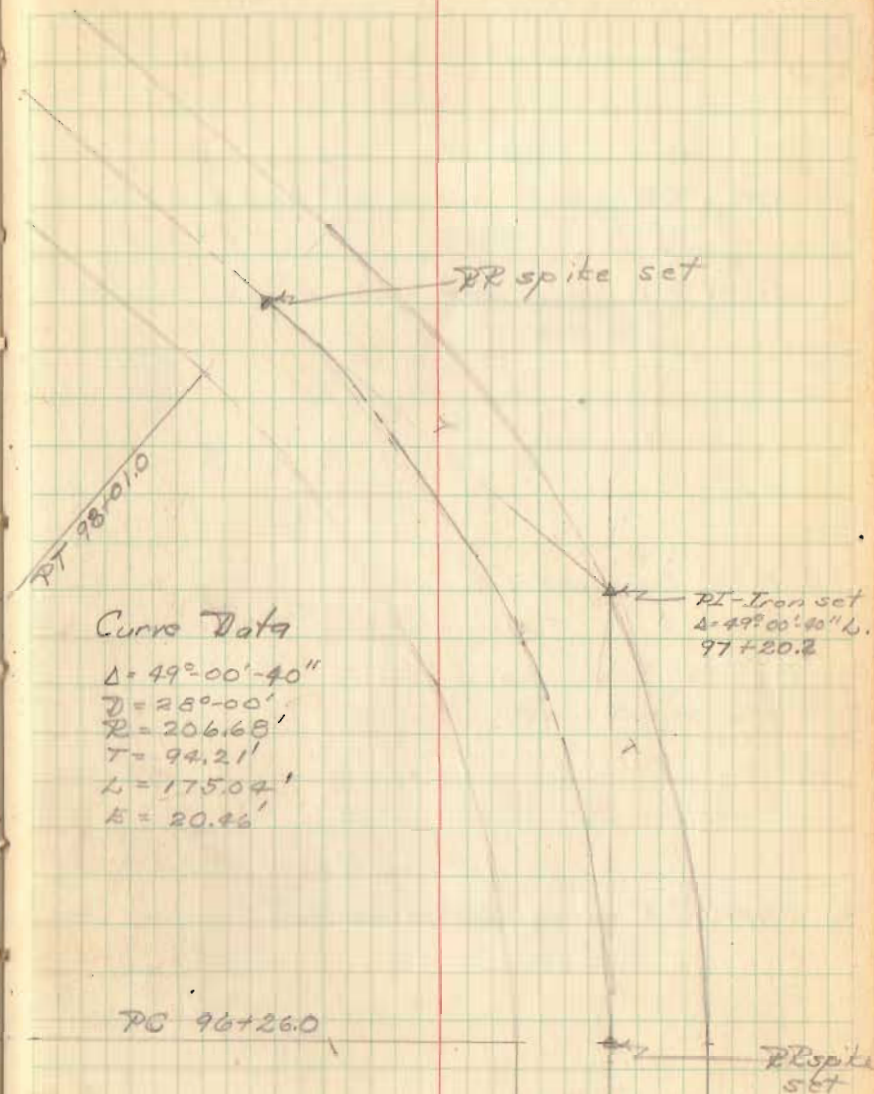
CH # 166 (contd)

Curve data - PI 97+20.2

Curve to fit existing traveled road.

	Dist	Defl	Total Defl.
98+01.0	76	3°-38.4'	24°-30'
+75	50	3°-30	20°-51.6'
+50	25	3°-30	17°-21.6'
+25	99.0	3°-30'	13°-51.6'
97+00	74.0	3°-30'	10°-21.6'
175	49.0	3°-30'	6°-51.6'
+50	24.0	3°-21.6'	3°-21.6'

PC 96+26.0



### Curve Data

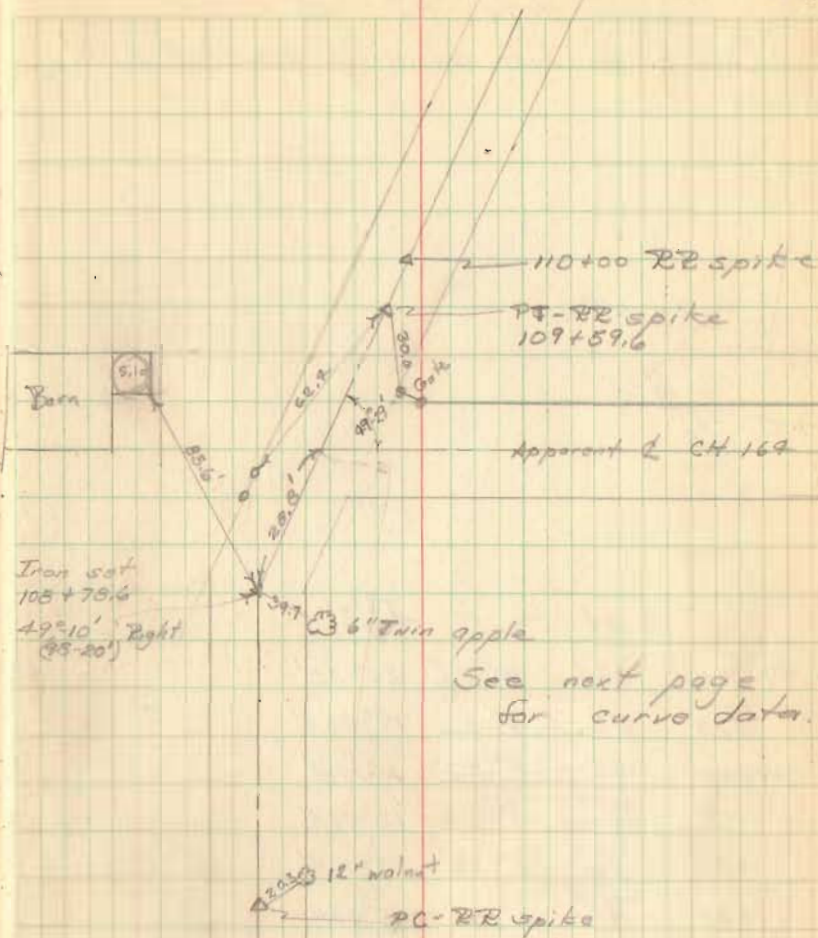
Δ = 49°00'-40"  
 D = 28°-00'  
 R = 206.68'  
 T = 94.21'  
 L = 175.04'  
 E = 20.46'

110+00 RR spike set - no hubs

PT 109+59.6 RR spike set - no hubs

108+78.6 Iron set (no hubs)

PC 107+89.0 RR spike set - no hubs



Ch. 166 (contd)

Curve data -PI 108 +78.6

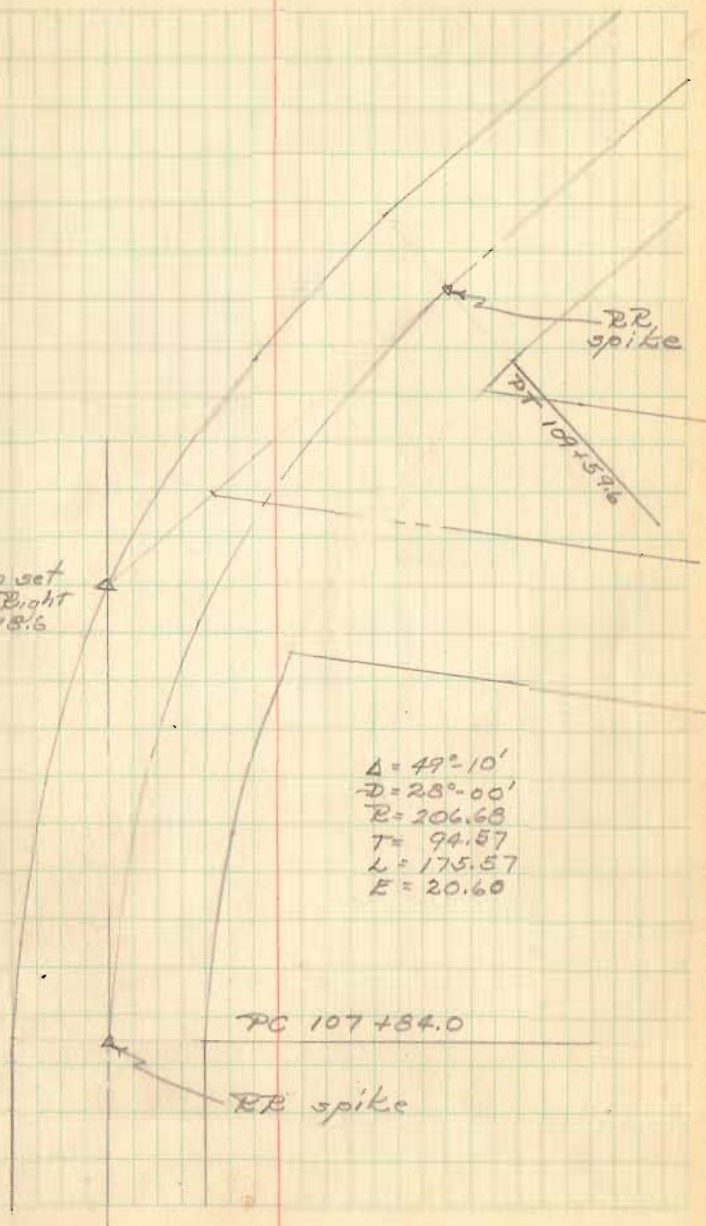
Curve to fit existing traveled road.

	Dist	Defl.	Total Defl.
PT 109+59.6	84.6	4°-50.6	24°-35'
+25	50	3°-30	19°-44.4'
109+00	25	3°-30'	16°-14.4'
+75	91	3°-30	12°-44.4'
+50	66'	3°-30'	9°-14.4'
+25	41'	3°-30'	5°-44.4'
108+00	16'	2°-14.4'	2°-14.4'
PC 107+84.0			

37

PI - Iron set  
 2°-49'-10" Right  
 108 + 78.6

$\Delta = 49^\circ - 10'$   
 $D = 28^\circ - 00'$   
 $R = 206.68$   
 $T = 94.57$   
 $L = 175.57$   
 $E = 20.60$



CH # 166 (contd)

60' R/W from CH # 47 to  
CH # 165

See FB 559 pg 15 for  
Surrey CH # 47.

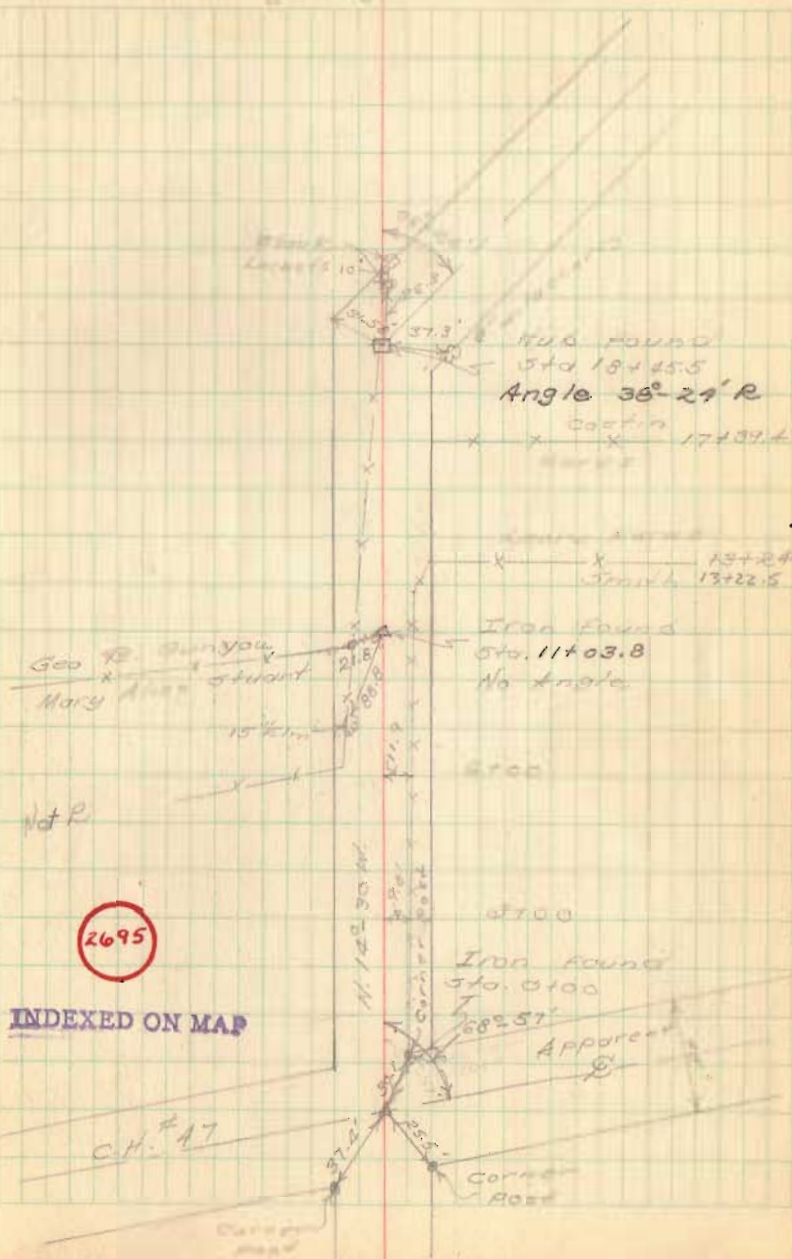
See FB 597 pg 66-7 for  
Gunyou Survey.

Party: O. Doan  
V. Dedrick  
H. Neuse

April 3, 1950

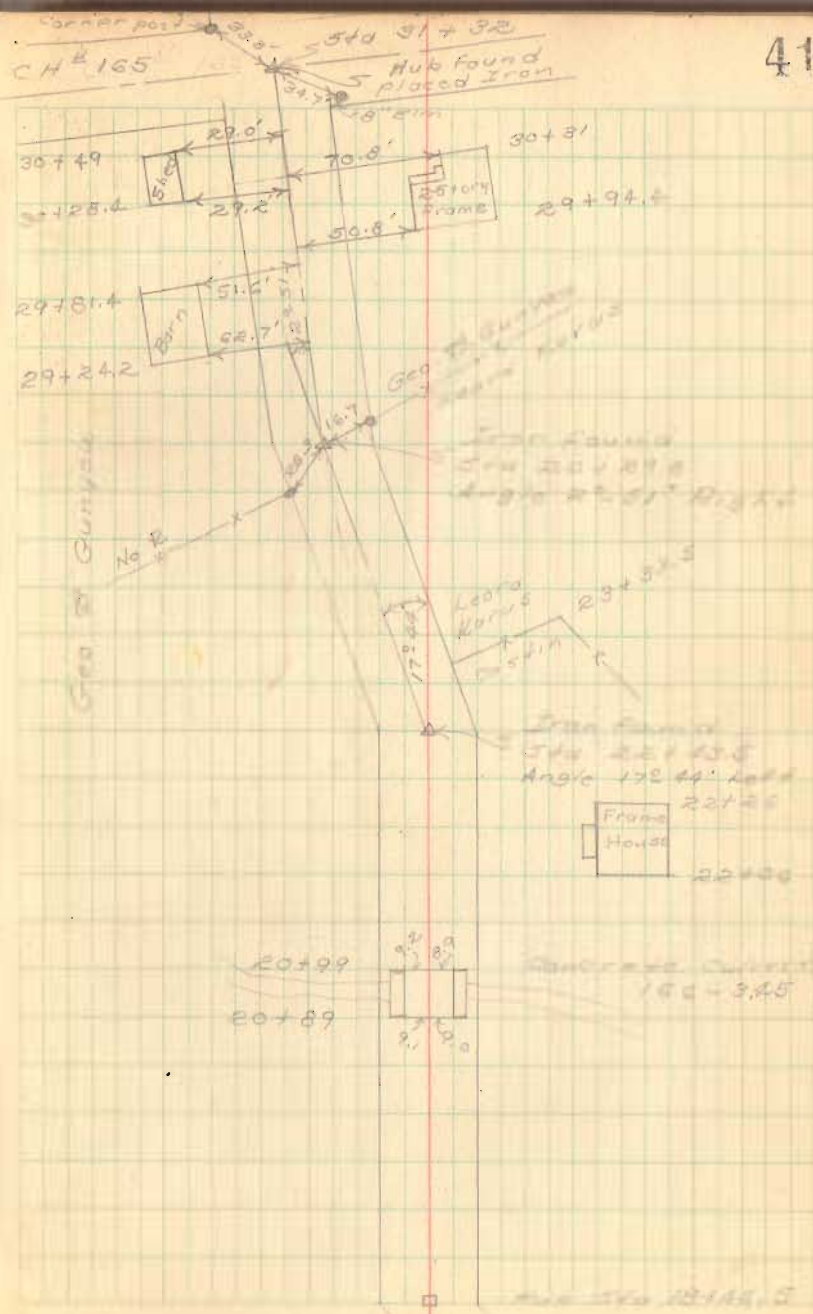
Warm

40



CH # 166 (contd)

41

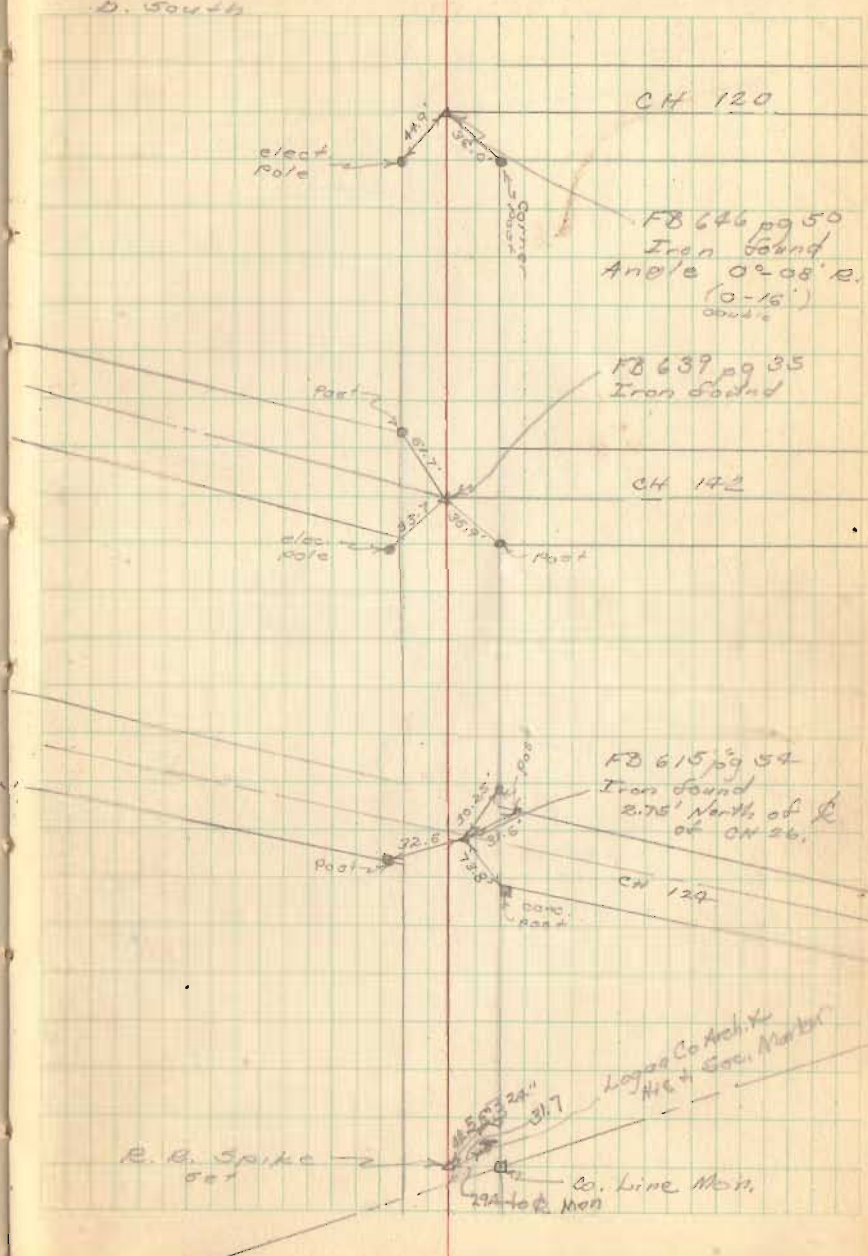




CH #26 - stakes for  
Telephone line

C. E. Keyser  
D. Dawson  
V. Detrick  
D. South

April 14, 1950  
Snow 44



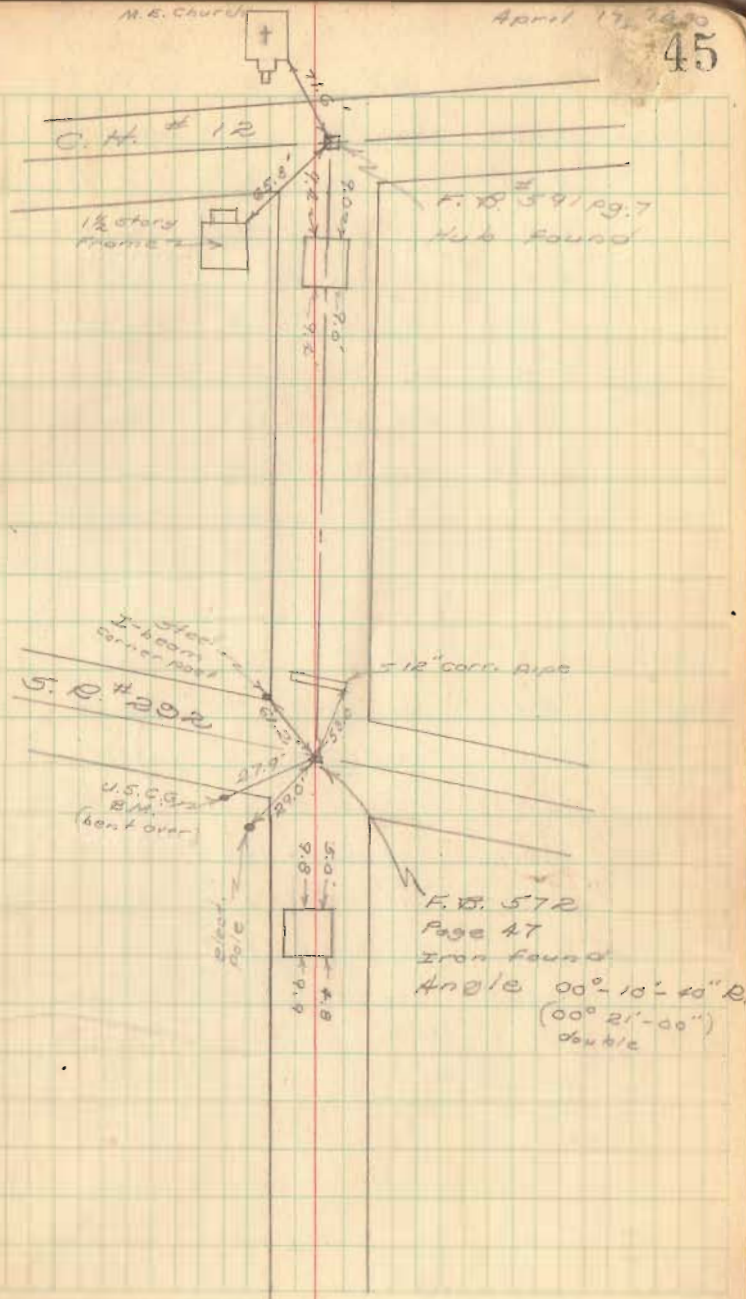
2061 INDEXED ON MAP

C.H. # 26 (contd)

M.E. Church

April 17, 1920

45



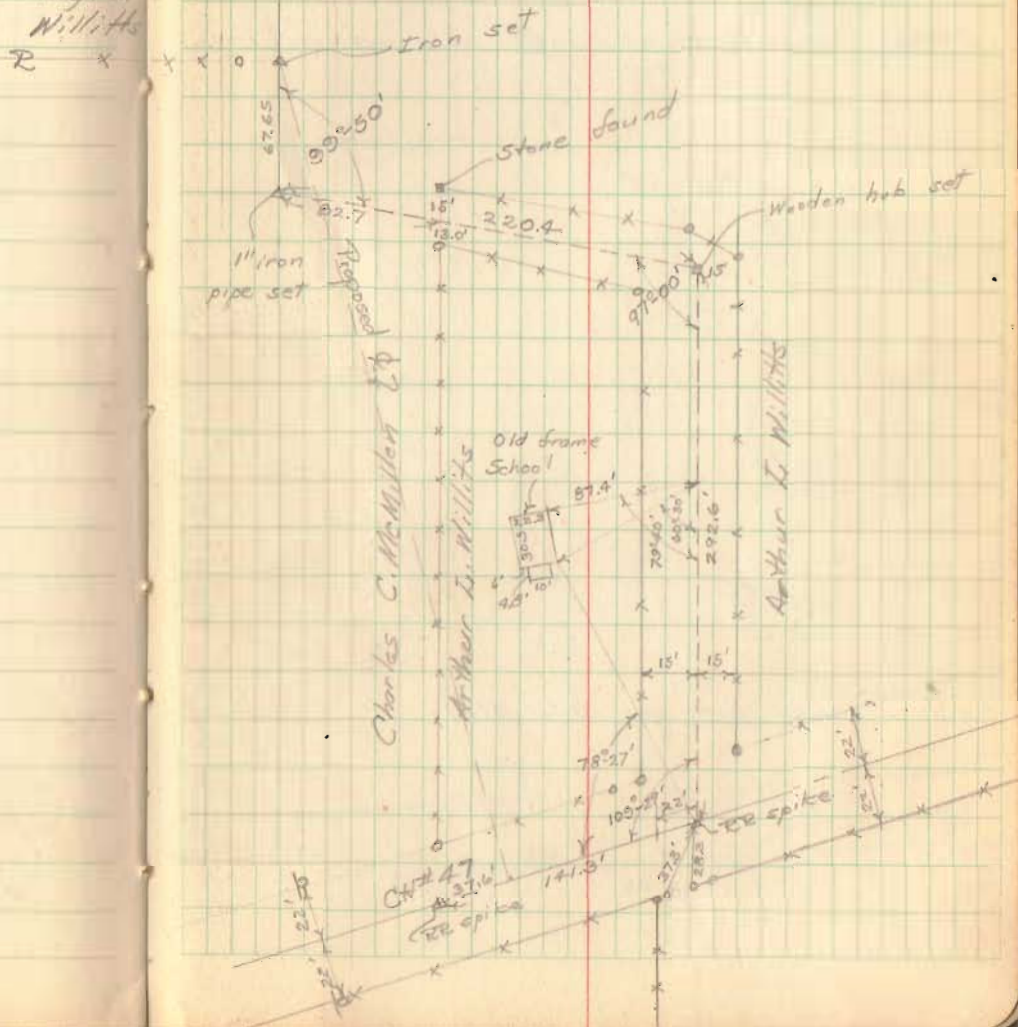
CH #165 - Preliminary Survey

Oct. 1950

C. Kayser  
D. Dodson  
V. Detrick  
H. Kayser

54

Myron G.  
Willitts



8808 INDEXED ON MAP

Survey CH #165

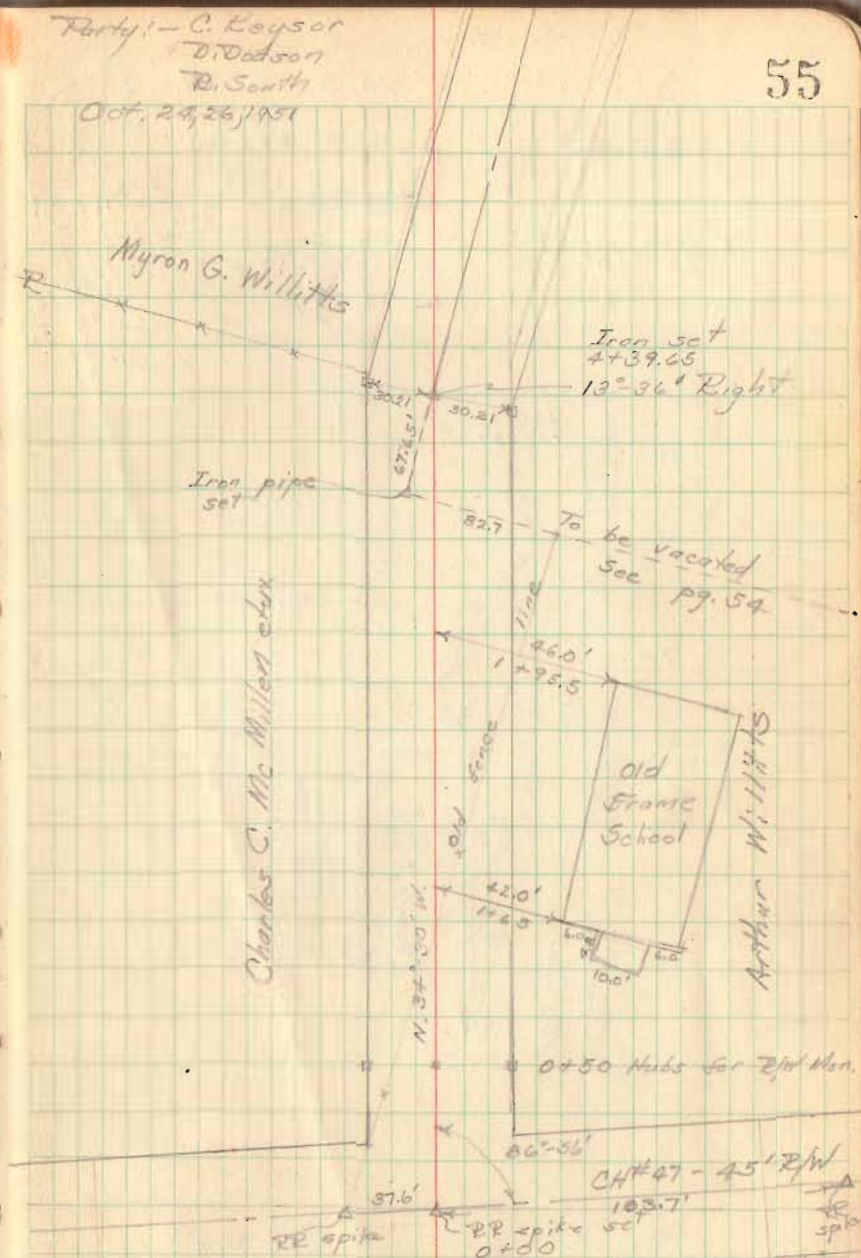
Staked 60' Right-of-way.

4+39.65 13°-36' Right - Iron set - Nubs set for RR.

0+50 Nubs set for 2nd Men.

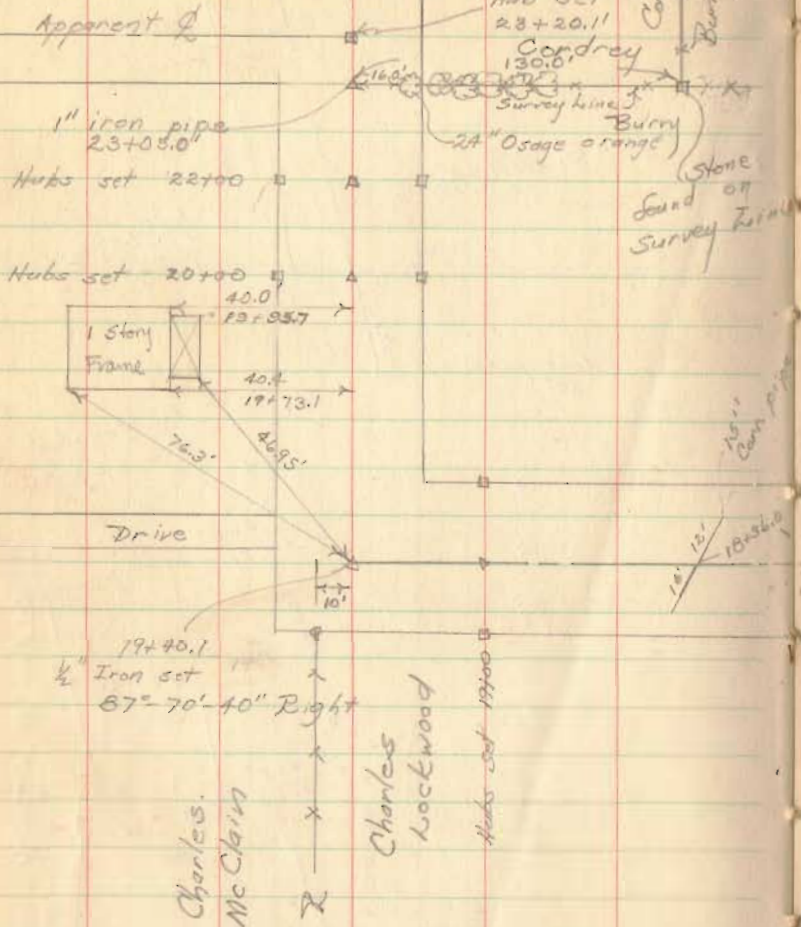
Party! - C. Keyser  
D. Dodson  
R. Smith  
Oct. 24, 26, 1951

55

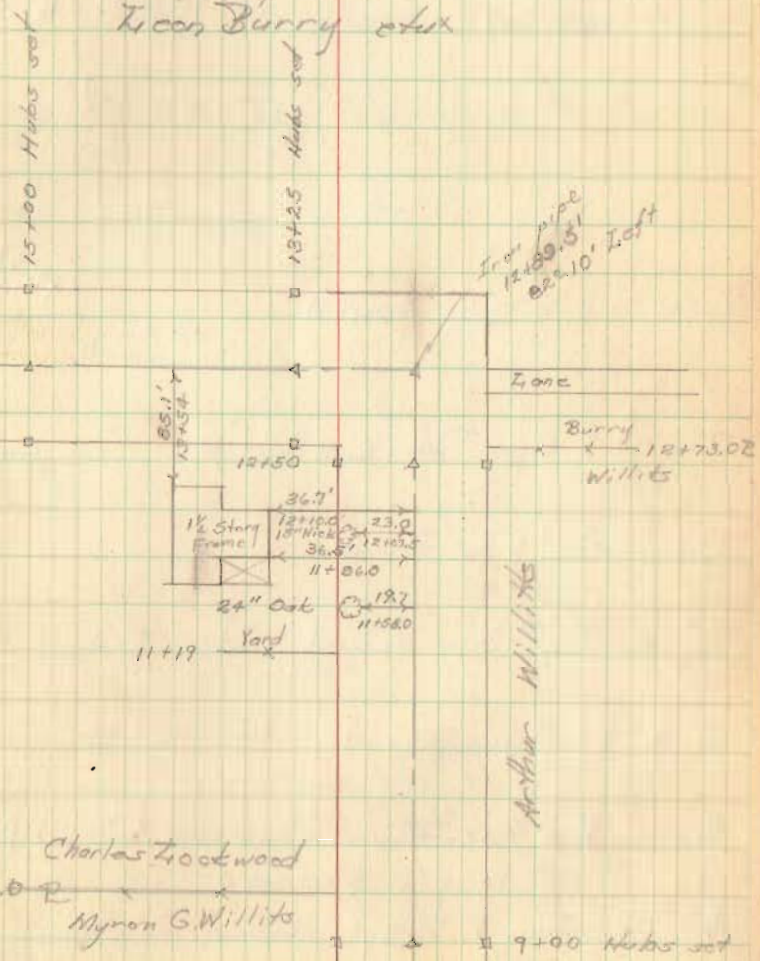


CH. #165 (contd)

VMS 12099



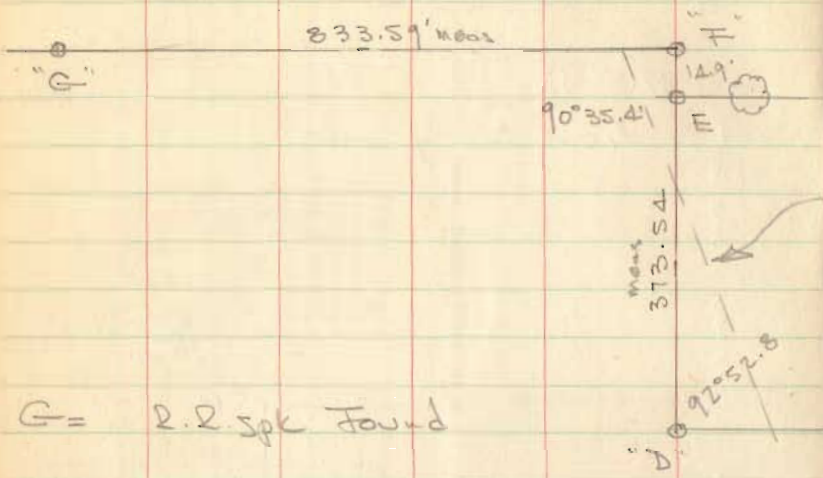
VMS 9878  
10109  
10718  
10719  
Iron Burry et al



9+00 RR spike - Hubs set for Mem

Charles Lockwood  
9+65.0  
Myron G. Willits  
9+00 Hubs set

T.R. 165



- G = R.R. spike Found
- F = 1" Pipe Set (well Point)
- E = 3/4" pipe Found
- D = 5/8"  $\phi$  Bar Found St. 19+40.7 6' deep
- C = 1" Pipe Found St. 12+89.5
- B = R.R. spike Found - removed & set 1" Pipe 18" long - 3' deep
- A = 0+00 R.R. spike Found 2" deep - 1.50' N. of R.R. spike on surface

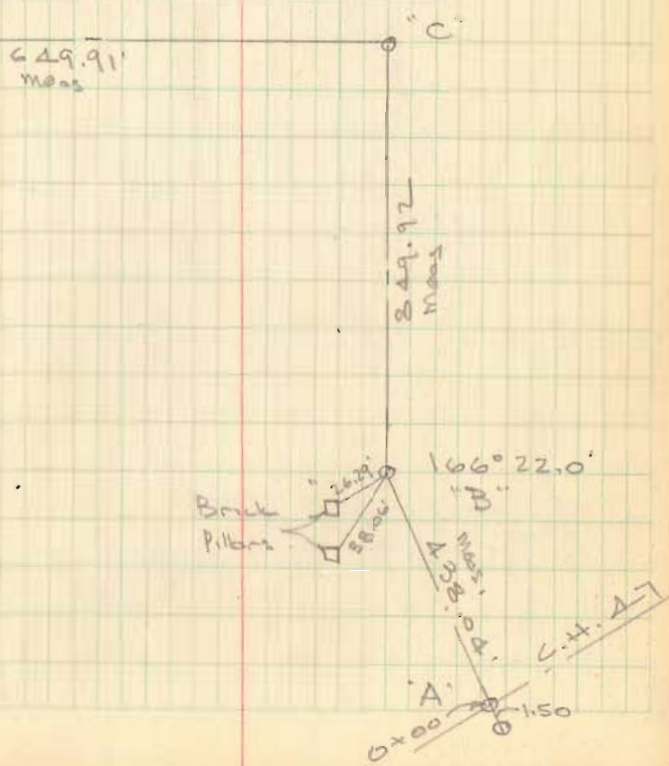
Oct 21, 1981  
 Dodson  
 Nichols  
 D.II

Oct 6, 1981  
 Dodson  
 Nichols  
 D.II

57

Stakes Set for R/W Fence  
 From C to E. 30' N. of E  
 For 60' Road 10/28/81 D.I.D.

See Pg 58 For Related E



REVISED CENTERLINE  
T.R. 165

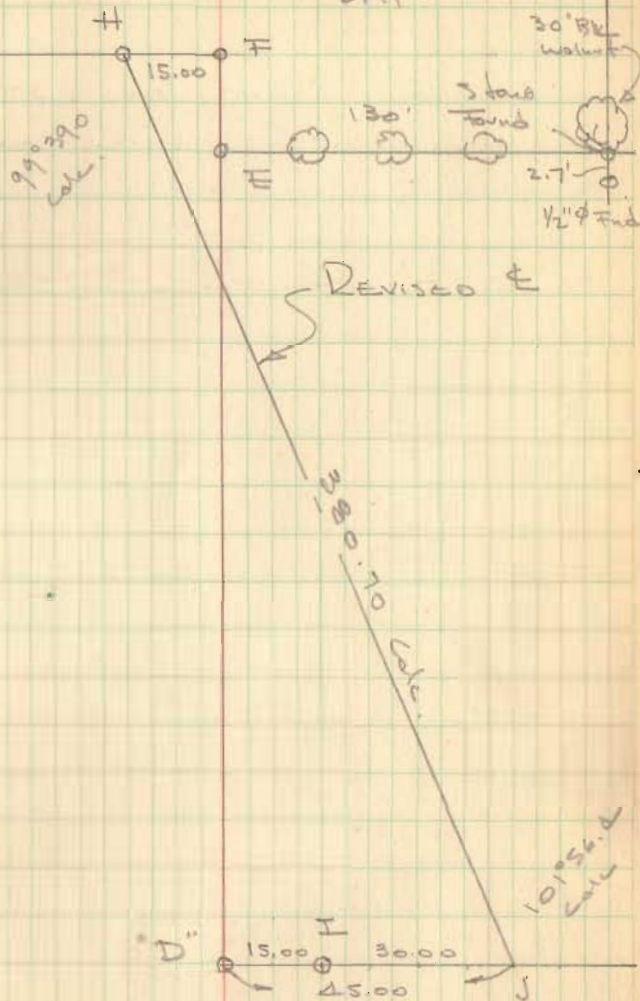
EXISTING E "D" - "F" RELOCATED  
TO "J" - "H" BY ORDER OF MOWERS  
TWP TRUSTEE & DON LOCKWOOD.

H = 3/4"  $\phi$  Bore w/cap stamped 1981 Set  
I = " " " " "  
J = Nothing Set

Oct 28, 1981

Dobson  
Nichols  
Dill

58



PROPOSED COUNTY HIGHWAY

PLEASANT TWP. Sec. 16, T-1, R-8 of 300 9, T-1, R-8

Staked 33' wide 16.5' each side of E  
E-Parallel to and 11.5' south  
of section line

16+00 Hubs set for R/W Men

11+00 Hubs set for R/W Men. 4.0' fence on left

6+00 Hubs set R/W Men. 4.5' fence on left

1+00 Hubs set for R/W Men

March 17, 1952

C. W. Wilgus  
D. L. Dedman II  
H. S. Dysart &

Stone Found (1' below ground)  
on 1/4 sec. cor. 1' Northwest of post

60

PI. 22 + 20.37

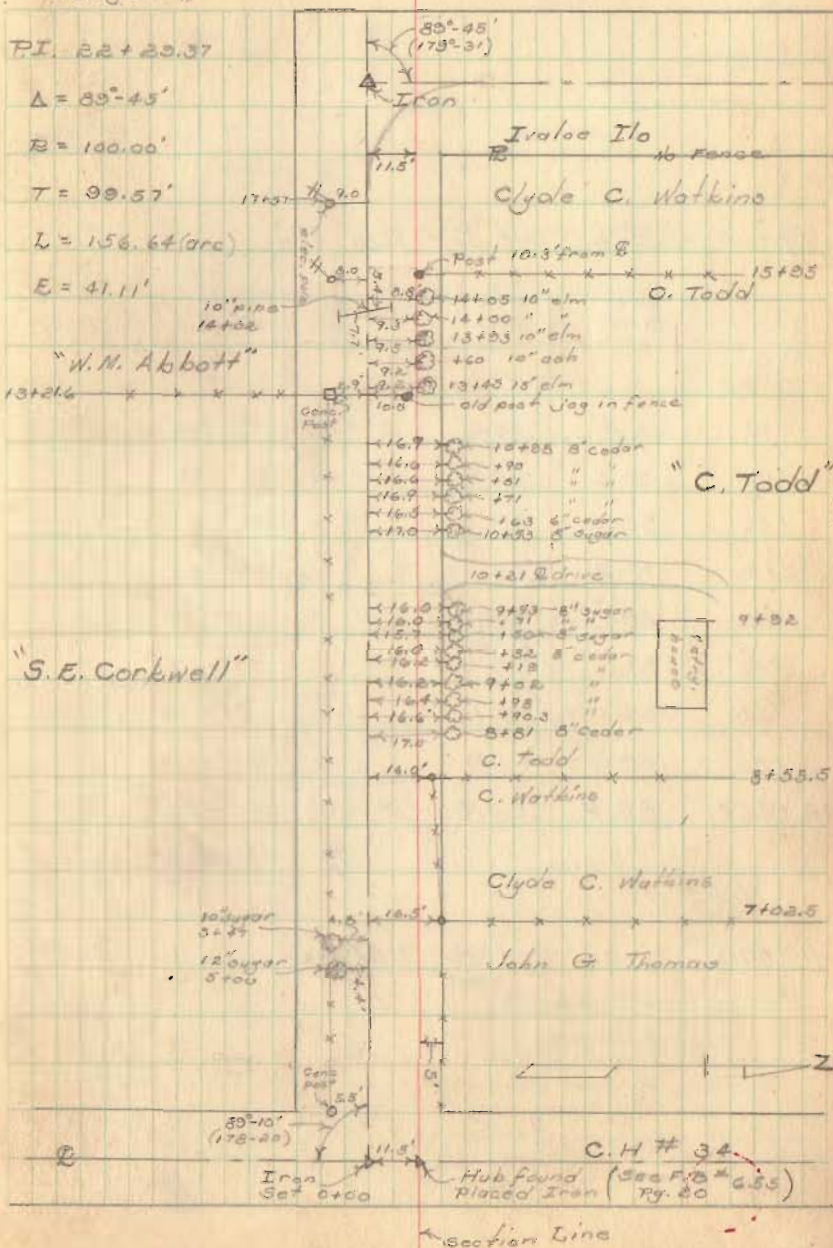
$\Delta = 89^\circ - 45'$

B = 100.00'

T = 99.57'

L = 156.64 (arc)

E = 41.11'



2060

INDEXED ON MAP



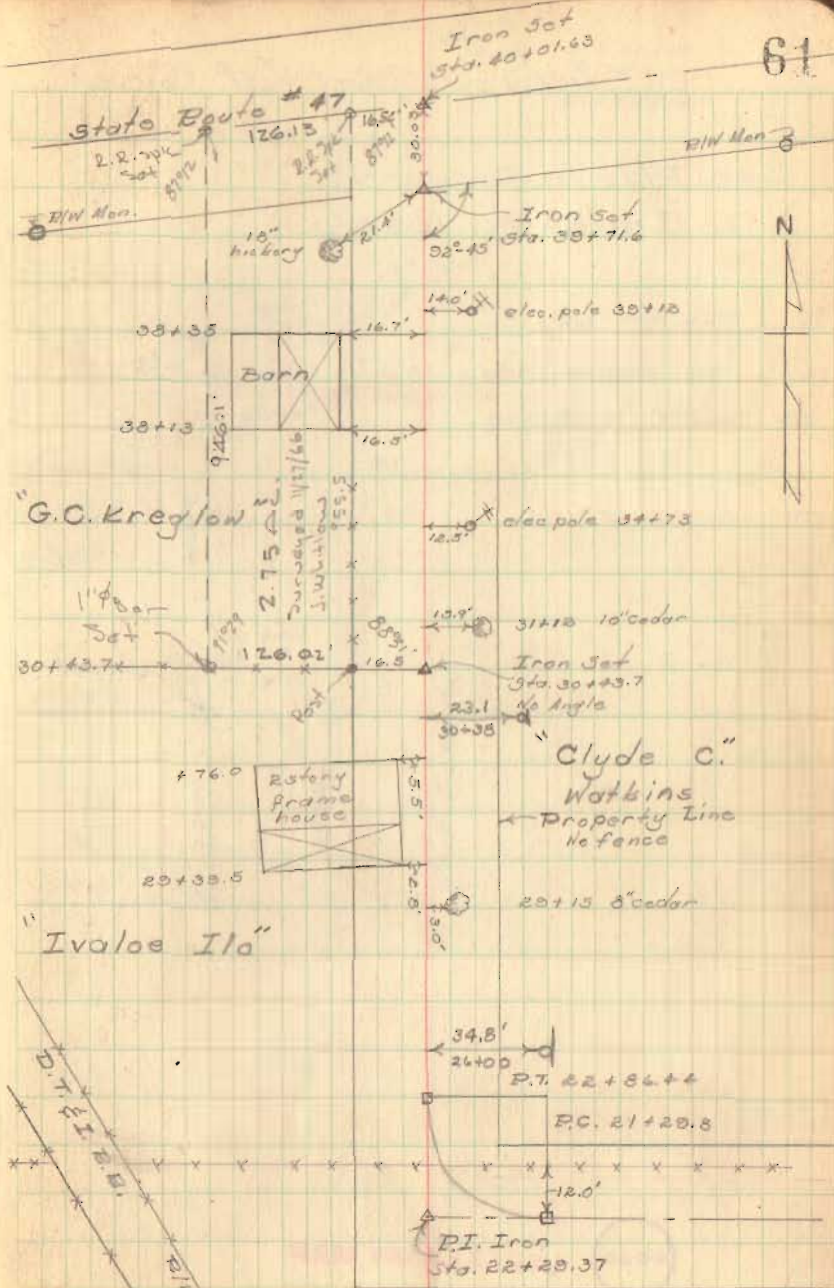
(Cont'd)

30+00 Hubs set for R/W Mon.

Sta.	Arc Dist.	Chord Dist.	Def.	total Def.
P.C. 21+23.8				
+40	10.2'	10.2	2°-55'	2°-55'
+60	30.2	30.00	5°-44'	8°-30'
+80	50.2	49.7		14°-23'
22+00	70.2	68.77		20°-07'
+20	20.0	19.97		25°-51'
+40	40.0	39.7		31°-35'
+60	60.0	59.1		37°-18'
+80	80.0	77.9		43°-03'
P.T. 22+86.4	86.4	83.9	1°-50'	44°-53'
			$\frac{\Delta}{2} = 44°-52.5'$	

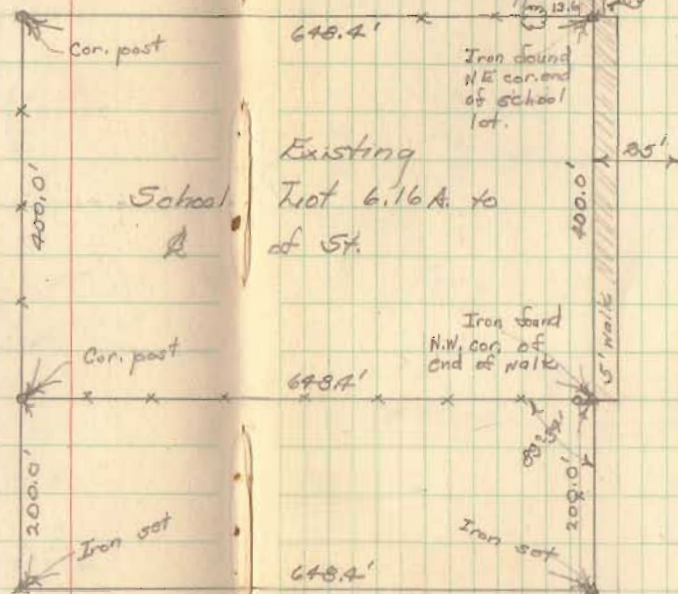
23+00 Hubs set for R/W Mon.

61



# Lakeview School Tract Survey

See Plat in Drawer-R  
Index No. 1064



Apr. 30, 1952  
Party: C. Kasper  
G. Higgins  
D. Dodson

62

See FB 493, pg 15  
for survey of  
existing school lot.

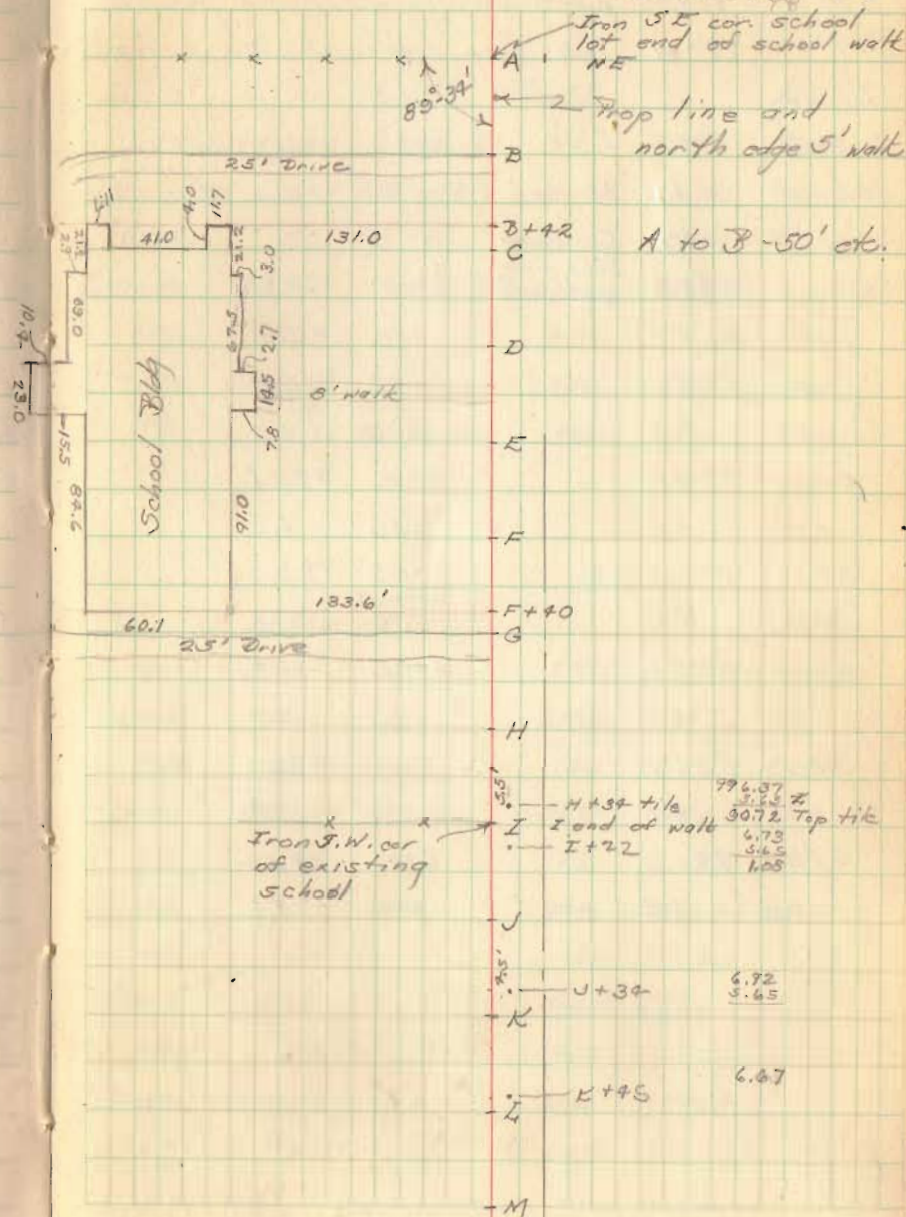
R West Lake Ave

Tateview School (contd)

Apr. 30, 1952

Party: C. Keyson?  
G. Wilgus?  
D. Dodson

63



C. H. # 61  
Washington Twp.

Stakes set for 60' R/W

21+00 Hubs set

16+00 Hubs set

11+00 Hub set - Right only

0+00 Hubs set

1+00 Hubs set for R/W Monuments

Stone  
Sta. 30+50  
F.B. # 574  
Pg. 29

Oct 26, 1953  
Locating Corners  
D. Dodson  
T. Richardson

Nov. 20, 1953  
Wind - 60°  
D. Dodson - T. Richardson  
V. Detrick X 69

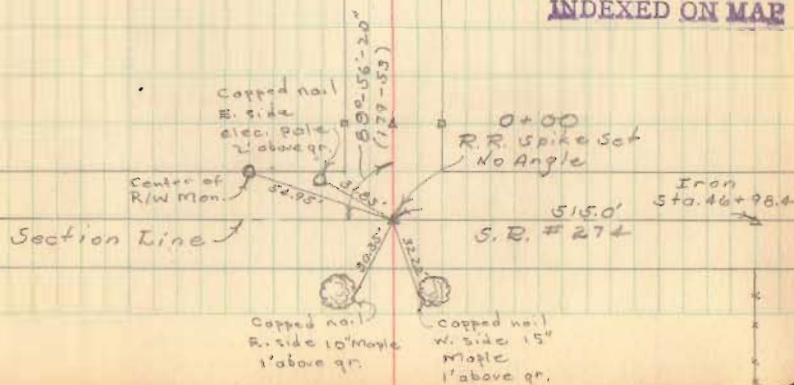
Capped nail  
N. side  
Double maple  
1/4 Section Line  
Small pointed stone  
found - OK for fence  
placed brick around  
Sta. 26+48.5  
Replaced stone  
with 1" Iron pin  
4-19-52 D.I.D.

Arthur F.  
Mast

Jay R.  
Renick

2696

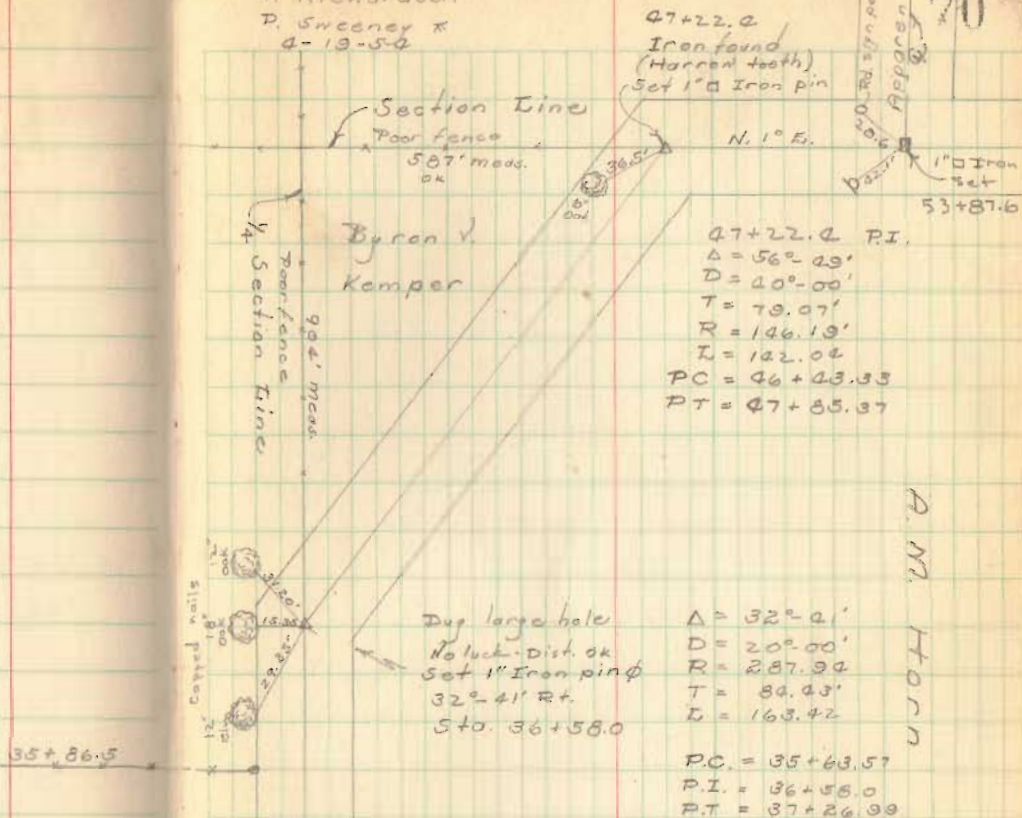
INDEXED ON MAP



C. H. # 61

D. Dodson  
T. Richardson  
P. Sweeney X  
4-13-50

70



A. M. Horn

Kerns Survey  
East Liberty  
V.M.S. 4689

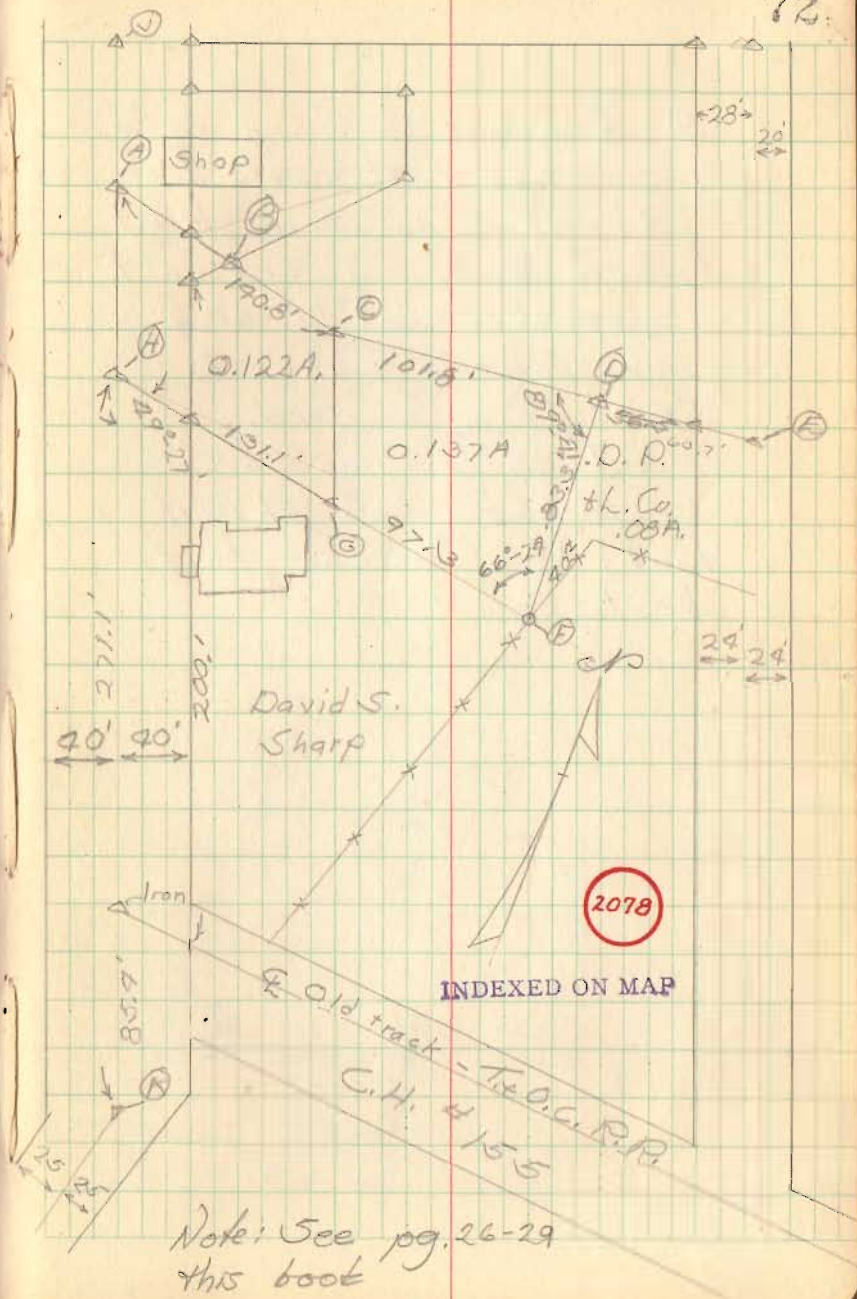
- A R.R. spike set
- B 3/4" pipe found - see Co. Eng. & F.B. 688 pg. 28
- C same as "B"
- D 3/4" pipe set
- E 3/4" pipe found - 7.17' East of Q
- F corner post - Hub set N. side
- G 3/4" pipe set
- H R.R. Spike set
- V R.R. spike found See Eng. F.B. # 689 pg. 28
- K Iron pin found Sta. 142 + 58 of C.H. # 152

Produced existing fence on line from F to H - intersected line V-K  
Measured deed distance 833' +  
52.23' on Line H-F + set G -  
Line G-C is short (dead)  
ok for bearing

Produced Line C-B toward

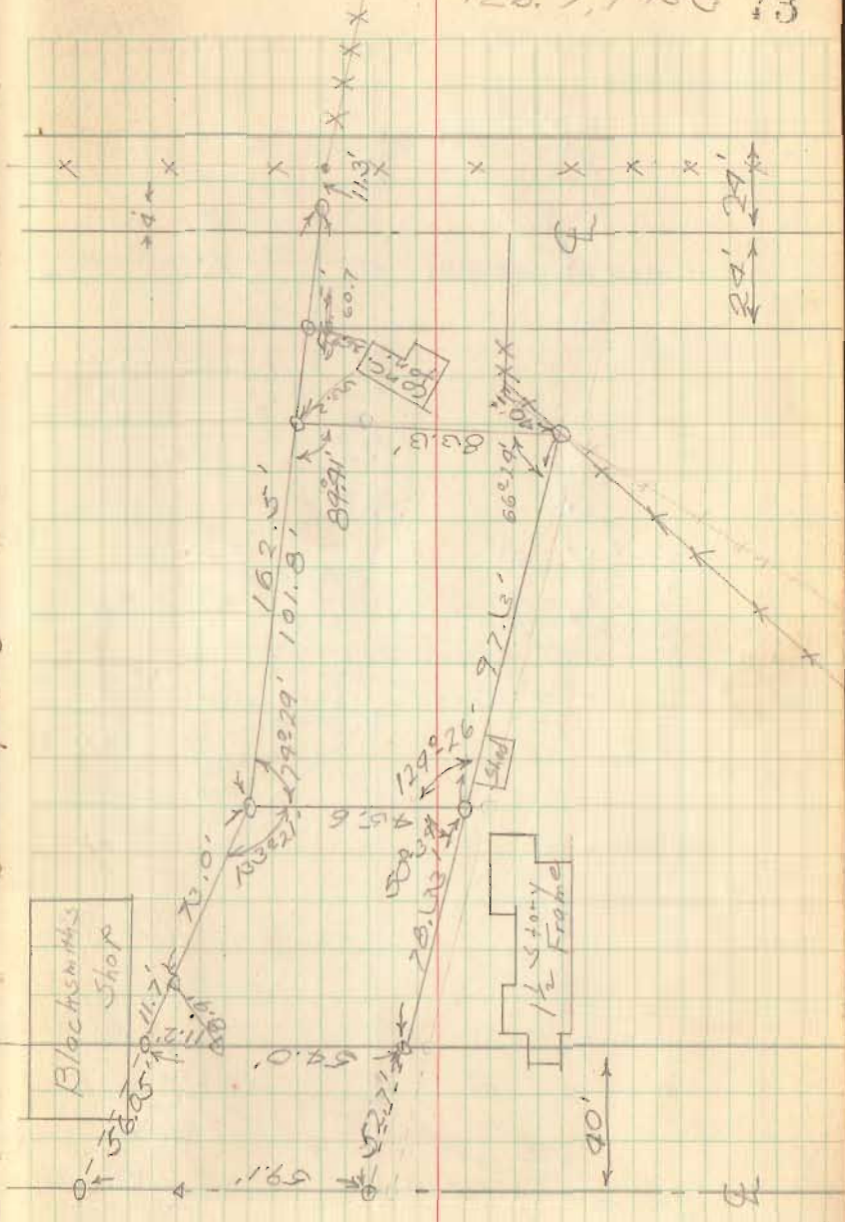
Jan. 31, 1953

72

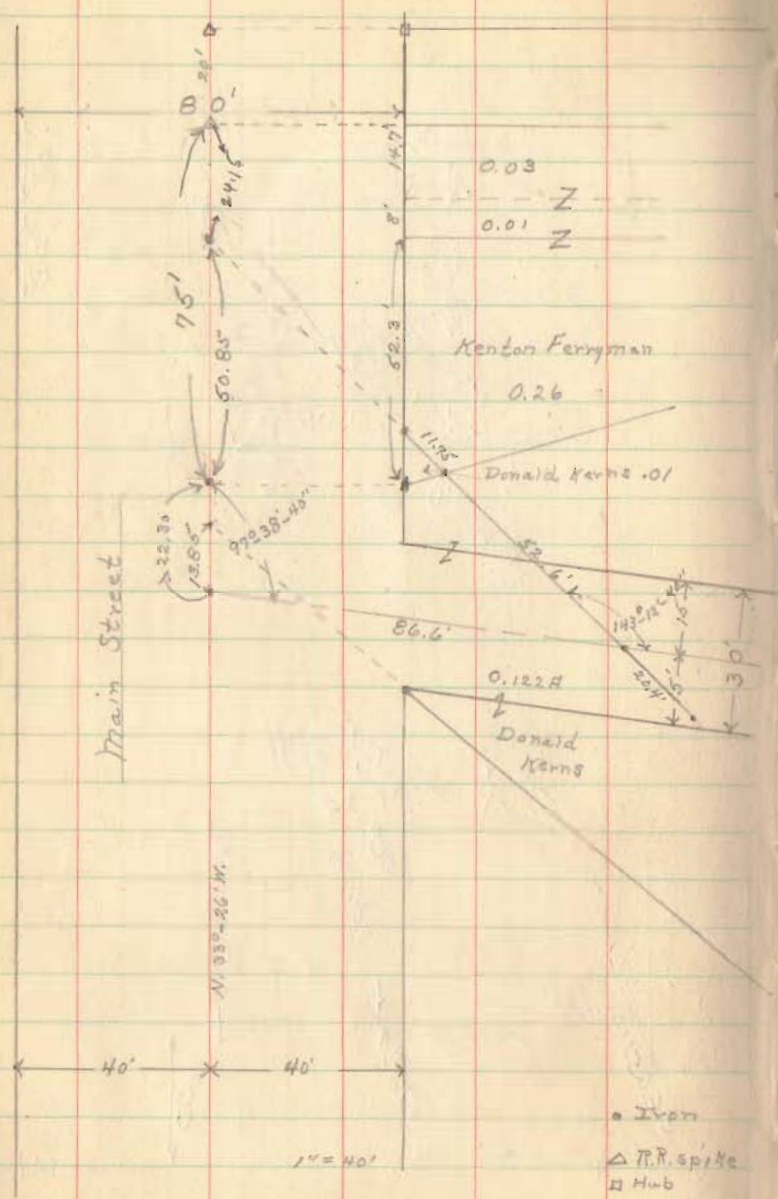
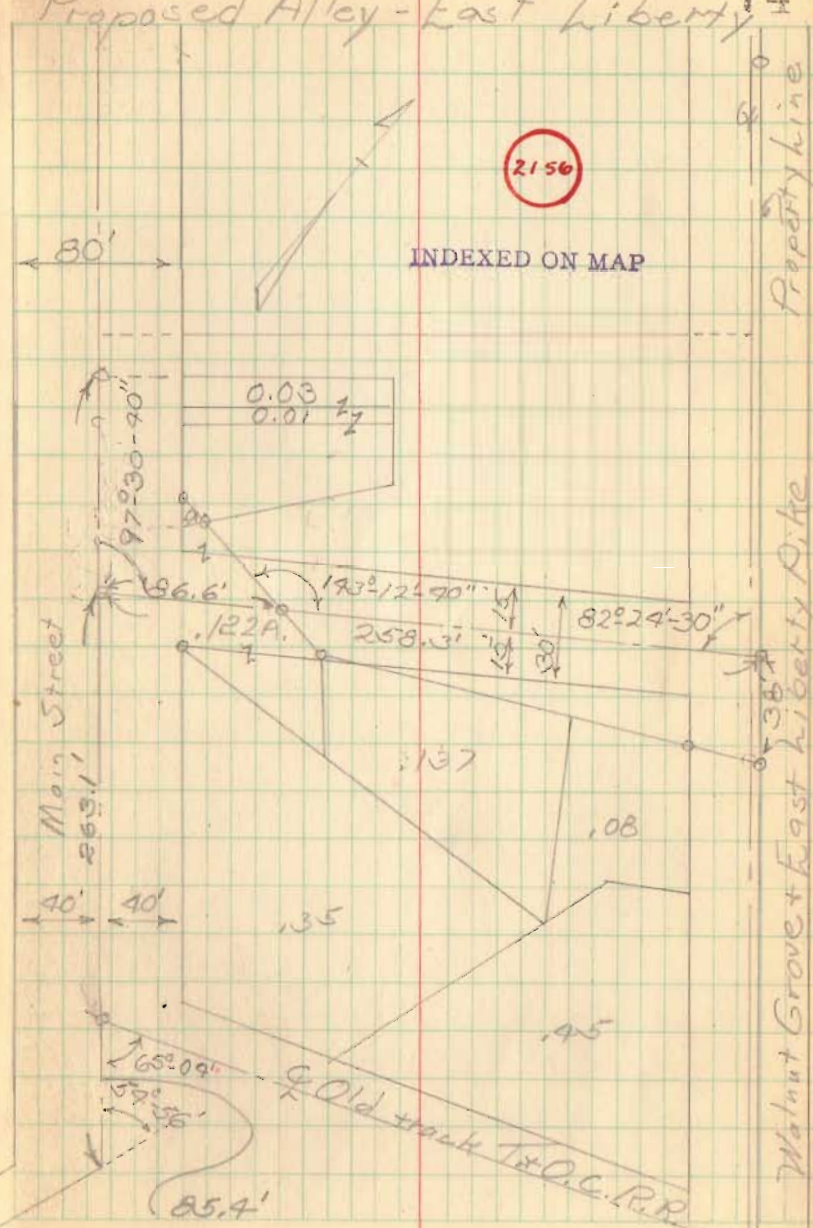


Feb. 7, 1950 73

A - Blacksmith shop on this  
 line appx. 1.5' - Calc. distance  
 H-A, set A on line H-V  
 (dead dist.) set on E,  
 sighted C - set D 60.7'  
 from E, this makes D  
 56.5' from E of rd.  
 (deed calls for 56.5'  
 from S.E. cor. of Mill  
 lot) this seems to fit  
 best.



Proposed Alley - East Liberty <sup>74</sup>



See pg 27-B, 7R-3 this book