

Rd #54

Width 60' - Staked 60' wide

Hubs replaced by R/W monuments  
monuments at stations  
shown - June 1950

2100

Hubs Set 30' R/W Lt.  
0 0

June 14, 50  
Cloudy

RS	O. Shirk
RS	D. Dodson
RS	V. Ditrick
RS	D. South
RS	B. Hemminger
RS	E. Core, Jr.

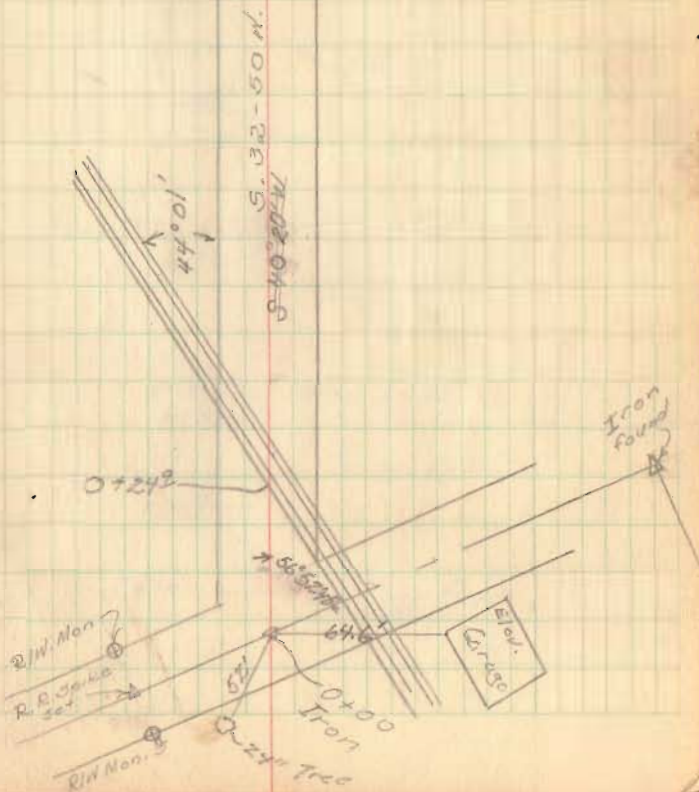
to 12' Drive 2+4.7

10' - 16' wal nut  
17.5'

2694

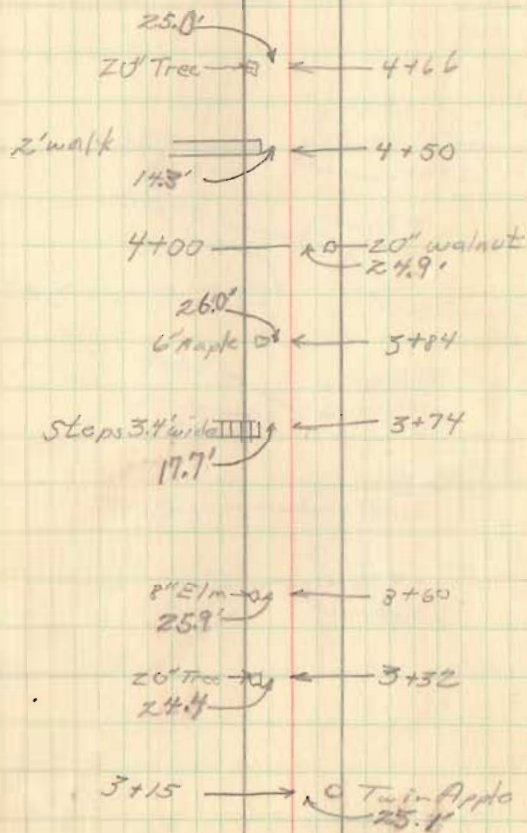
INDEXED ON MAP

RR Spike 2+00



Rd #54

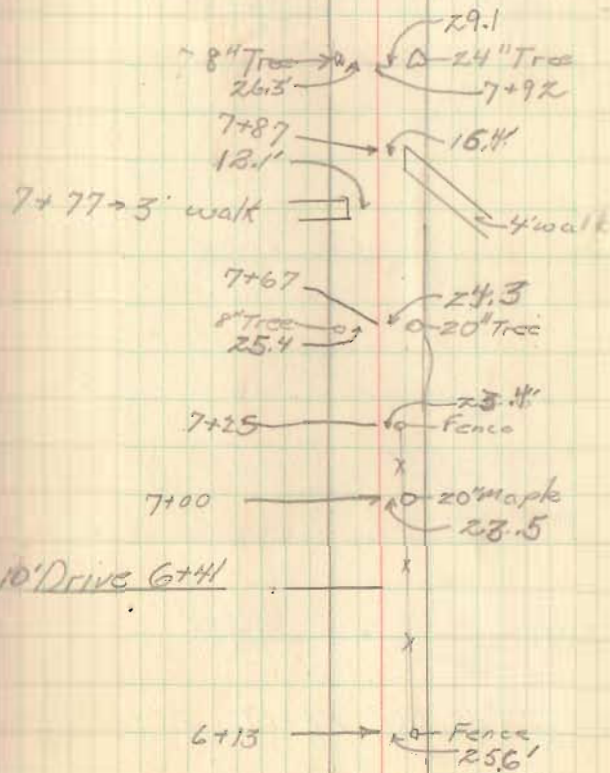
R. Hellen St 5+36



Rd 54

8

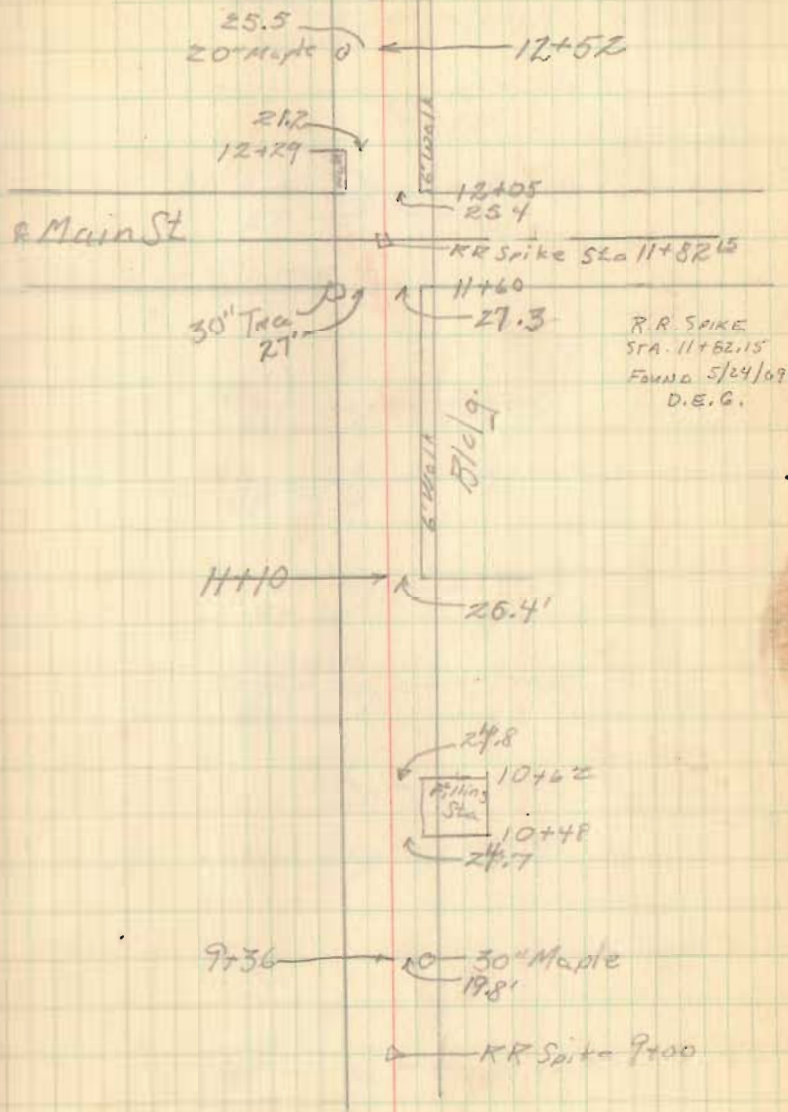
Williams St 8+22





Rd 454

9



9+00 Huber Sec 30' RL+LL

Rd #54

10

30" Tree - 0) ← 16+24  
26.7'  
1598 — 10-12" Maple  
25'  
15+83 — 20" Maple — 0) ← 10-16" Maple  
27' — 25'

E Elbridge St 15+83

10" Maple — 0) ← 15+15  
28'

24" Maple — 0) ← 15+00  
28'

10" Maple — 0) ← 14+80  
28'

30" Maple — 0) ← 14+60  
27'

12" Tile Drain — 0) ← 14+55  
21'

30" Maple — 0) ← 14+45  
27'

15+86 — 10" Tile Drain filter  
21.2'

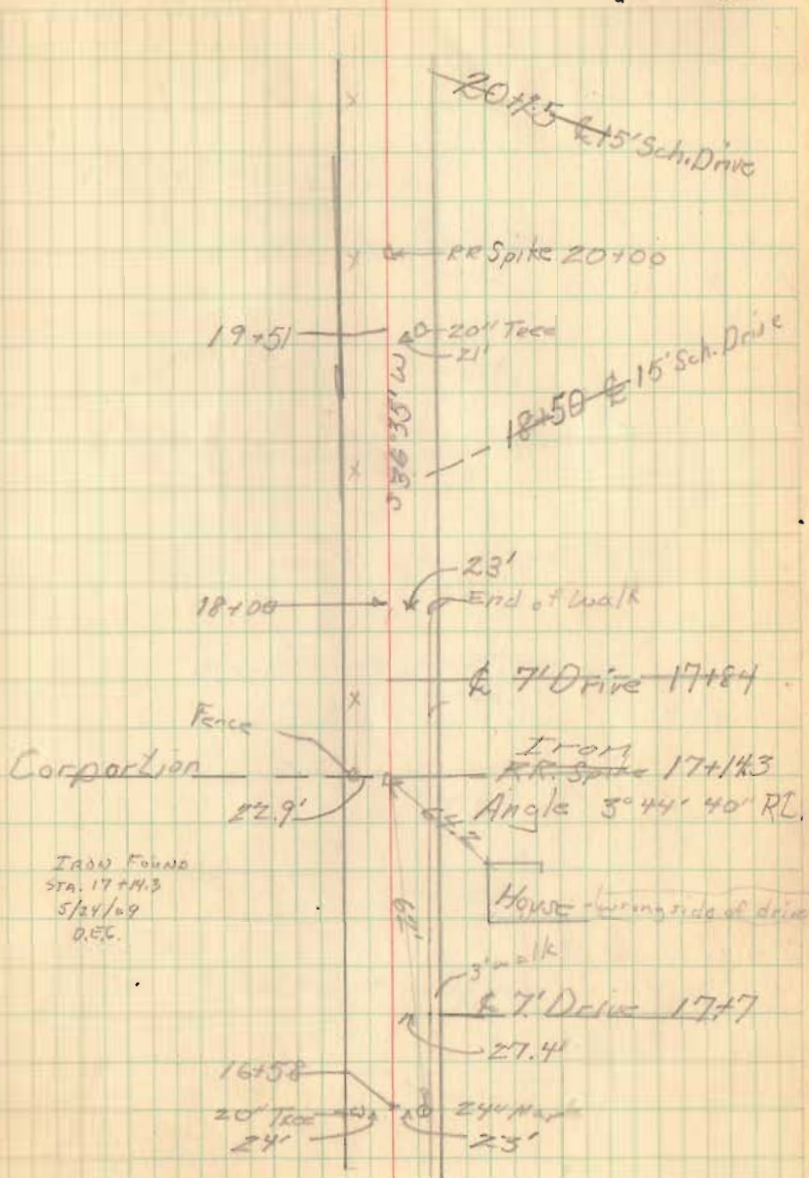
24" Maple — 0) ← 13+29  
22.9'

a 3' walk on the Rd.

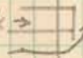
Rd #54

20+00 Hubs Set 30' RL + LI

11





24+26 R3 Walk → 

19.7

24+20


→ 10-16" Tree  
21'

23+94

→ 10-12" Tree  
21'

23+81

→ 10-10" Tree  
21'

Fence  10-23+41  
21'

23+10

→ 10-12" Tree  
21'

22+30

→ 10-10" Tree  
21'

22+2

→ 10-14" Tree  
21'

21+13

→ 10-16" Tree  
20'

20+77

→ 10-10" Tree  
23.4

20+48

→ 10-15" Tree  
19.5

Rd 54

PT. 31+96<sup>2</sup> Hub Set 30' RL + LT

PC. 30+99<sup>6</sup> Hub Set 30' RL

POT 29+78<sup>9</sup> Hubs Set 30.3' RL + LT

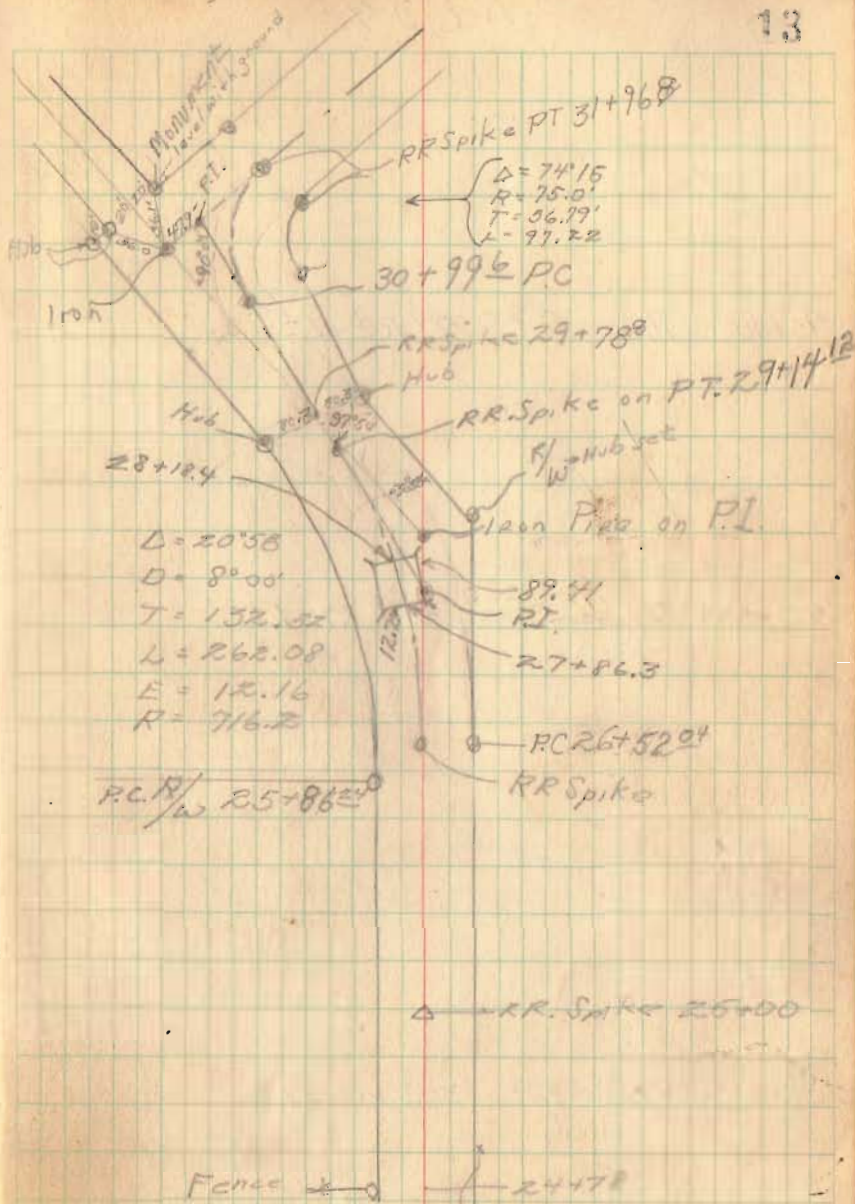
PC. 26+57<sup>0\*</sup> Hub Set 30' RL

PC. 25+91<sup>24</sup> R/W Hub Set 30' LT

25+00 Hubs Set 30' RL + LT

June 15, 50

13





Rd #54

45+00 Hubs Set 30' RL+LT  
o o

40+00 Hubs Set 30' RL+LT  
o o

35+00 Hubs Set 30' RL+LT.  
o o

14

L. BRUNSON  
x x 49+48

W.H. Hurless

RR Spike 45+00

42+94 E. Drive (10' wide)

88' 63" W

RR Spike 42+00

Culvert  
widened  
4-54

12' 6"

39+69.6

12' 6"

39+34.4

12' 50" 39+00

RR Spike 35+00

RL 54

60+00 Hubs Set 30' RL+LL.

55+00 Hubs Set 30' RL+LT  
0 0

50+00 Hubs Set 30' RL+LL.

15

Chas C. LaPue  
~~Corry Van Gorder~~

Rc/215

Corry Van Gorder

50+81

Noah Truar 5'

S 29° 57' W

RR Spike 60+00

Angle  $0^{\circ} 04\frac{1}{2}'$  RL  
Stone 57+565 (See book 571)

Raymond R.R. + Altar

St. Brunson

56+10 & 15' Drive

RR Spike 55+00

RR Spike 50+00



Rd #54

PT. 75+78 <sup>51</sup>	43° 01.5' Lt	Hybr Set
+50	34° 26'	56.76
+25	26° 56'	26.1
75	19° 26'	66.55
+75	11° 56'	41.4
+50	4° 26'	15.4
PC 74+35 <sup>13</sup>	0-00	Hubs Set

PT 73+35.8	45° 10' RL	Hubs Set
73	42° 39.5'	
+50	39° 09.5'	
72	35° 39.5'	
+50	32° 09.5'	
71	28° 39.5'	
+50	25° 09.5'	
70	21° 39.5'	
+50	18° 09.5'	
69	14° 39.5'	
+50	11° 09.5'	
68	7° 39.5'	
+50	4° 09.5'	
67+00	0° 39.5'	
PC 66+90.6	0-00	Hubs Set

June 19, 50

18

These Curves changed  
Aug., 53; See  
page 61.

(Sea Field Book)  
571  
for Trans.  
page 43

$\Delta = 86^{\circ} 03' \text{ Lt}$

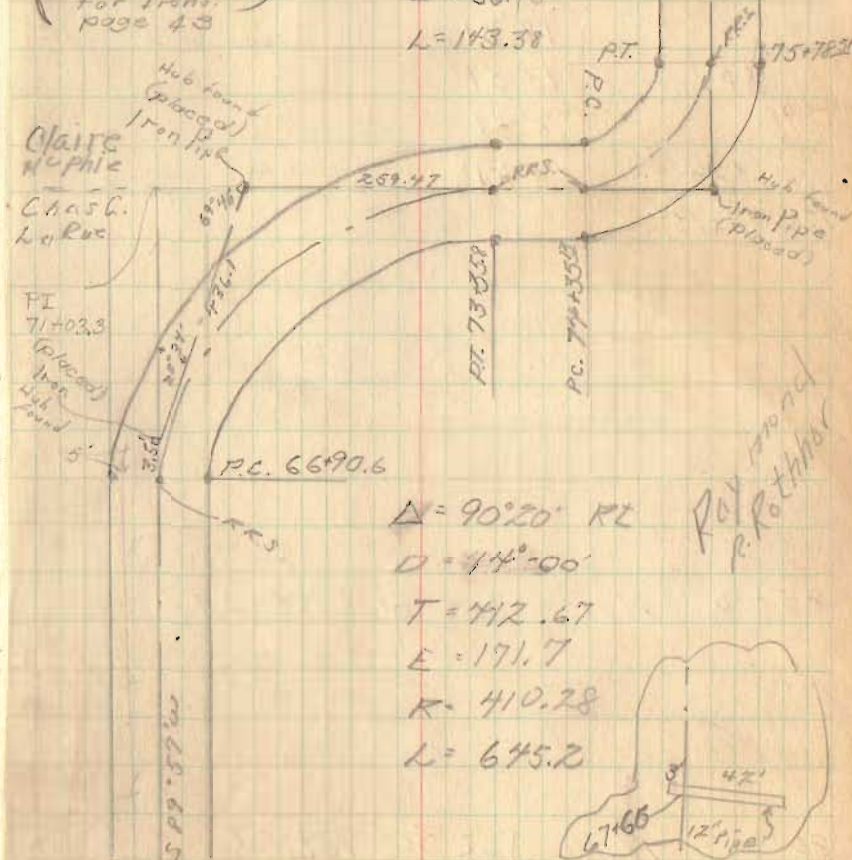
$D = 60^{\circ} 00'$

$T = 93.33$

$R = 100$

$E = 36.76$

$L = 143.38$



$\Delta = 90^{\circ} 20' \text{ RL}$

$D = 44^{\circ} 00'$

$T = 412.67$

$E = 171.7$

$R = 410.28$

$L = 645.2$

Raymond  
P. Rothman



Rel 54

98+06.2  
88+06.7  
999.5  
9.0  
787.7

88+06.7  
87.84  
12.7

90+85.45  
88+06.7  
2+78.75

88+06.7  
9.0  
12.5

69+06.7  
70.7  
83.7

98+06.0  
88+06.7  
10.0

747

22° 48'

97

18° 31'

750

13° 31'

96

8° 31'

759

3° 31'

P.C. 95+13.4

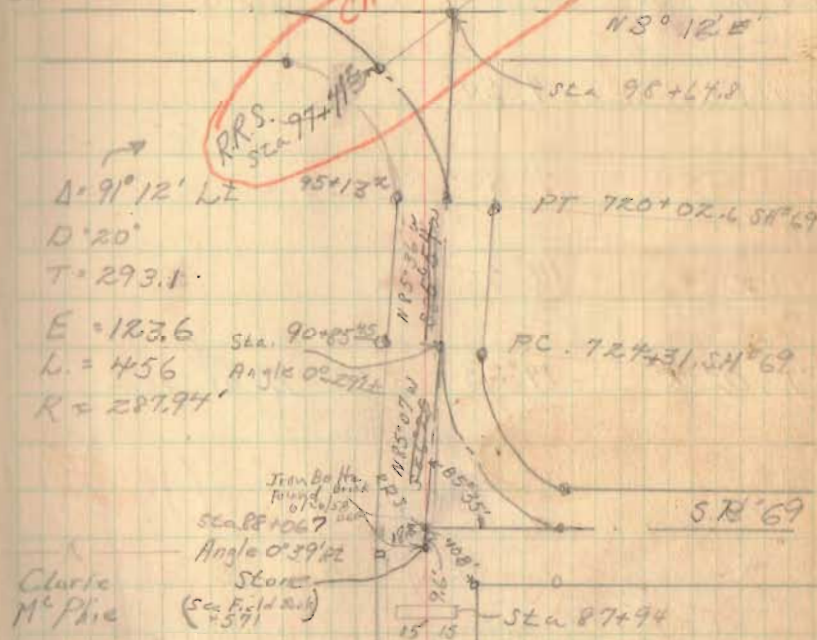
85+06 Hubs Set 30' RT+LT

80+00 Hubs Set 30' RT+LT

June 20, 50

17

S.R. 69



$\Delta = 91^\circ 12' LT$

$D = 20'$

$T = 293.1$

$E = 123.6$

$L = 456$

$R = 287.94'$

Sta. 90+85.45  
Angle  $0^\circ 29' 12''$

Sta. 88+106.7

Angle  $0^\circ 39' 12''$

Sta. 87+94

(See Field Book)

Clarke  
McPhie

Iron Bolt & Brass  
Found

016200 - 12" Rivet 86760

Raymond R.  
Rothhart

States Proposed

27.6' from fence

to 100' line

189.5  
- 6  
195.5

N 85° 07' W



Rd 54

Def. Lt.

PC 100+51.7

Hubs Set

101+

4° 50'

+50

9° 50'

102

14° 50'

PT 102+45.33

19° 23'

Hubs Set

These pages (18)  
have been changed  
see page 67

June 21, 50

18

$$\Delta = 38^{\circ} 46' \text{ Lt}$$

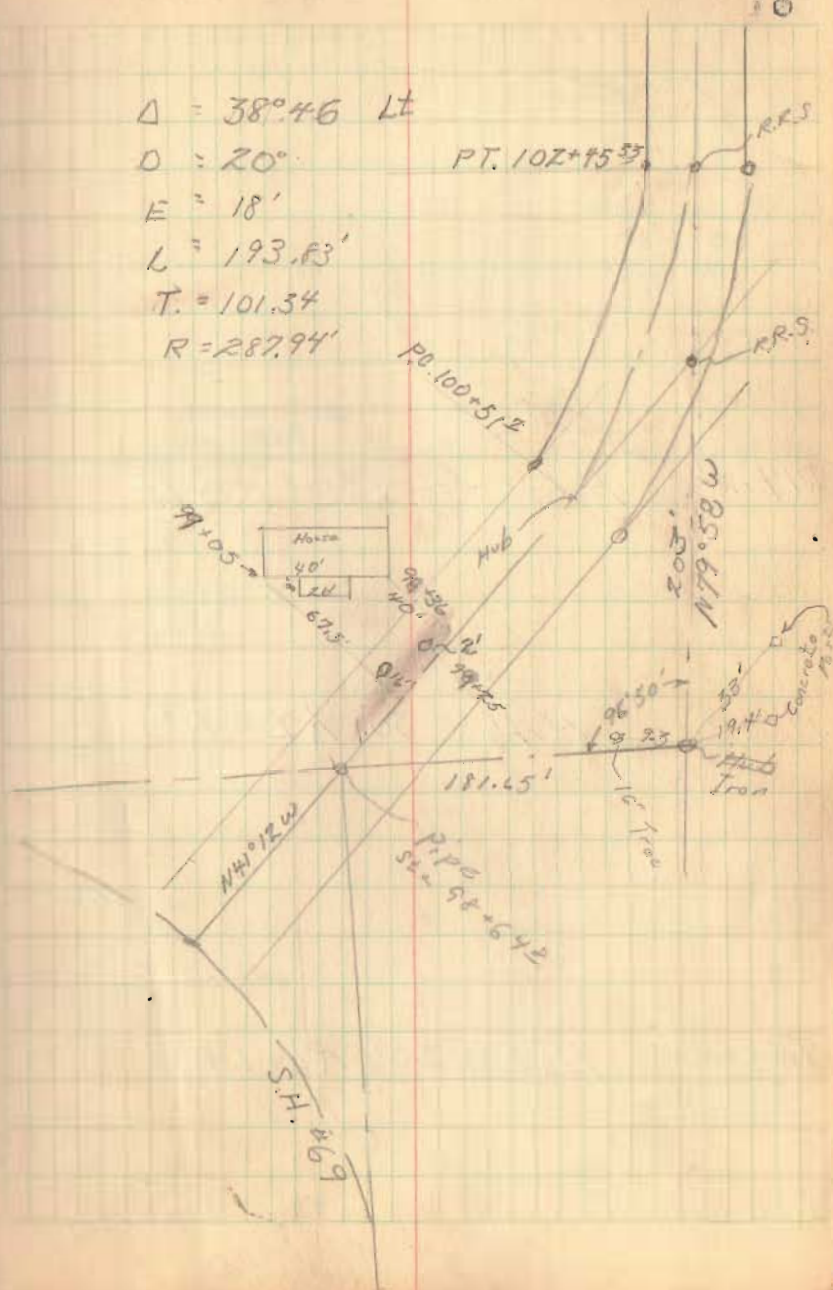
$$D = 20'$$

$$E = 18'$$

$$L = 193.83'$$

$$T = 101.34'$$

$$R = 287.94'$$



Rd 54

19

PT 14 + 18' Hubs Set 30' RT + LT

116 + 00 Hubs 30' RT + LT

105 + 00 Hubs 30' RT + LT



175  
17.5



Rd #54

June 22, 50

20

RRS. Sta 123+56.7

116.7'

Iron  
Sta 122+40  
Angle ~~28° 07'~~  
13° 51' 40" RL

234.0'

RRS. Sta 120+00  
Angle 40° 22' RL

Robt. Cummins

Ella F. Plum

171.6'

RRS. Sta. 118+58.4  
Angle 6° 05' SE

Miami



12.75'

RRS. Sta 117+75.4  
Angle 3° 00' LT

118+58.4 RRS. on End of Bridge

117+75.4 RRS. Beginning of Bridge

Rd 54 +60

PT 130+52<sup>E</sup> Hubs Set 25' RT+LT.

PC 129+61<sup>E</sup> Hubs Set 25' RT+LT

21

$D = 48^{\circ}46' LT.$

$D' = 53^{\circ}54'$

$T = 50'$

$E = 10.8'$

$R = 110.3$

$L = 90.5$

PT 130+52<sup>E</sup>

RES.

Iron P.I. 130+112

Angle  $78^{\circ}45' RT$

Elza Saunders

PC 129+61<sup>E</sup>

Mon

Robert E.  
Cummins

15' ELM

RD 60

RES

12' 12" 1/2  
Sta 123+84

Elza F Plum

35' 17"

S 70° 02' W

50° 15' 20"

RD 54

Iron Sta 124+71<sup>E</sup>

124+31<sup>E</sup>

123+81

Iron Sta 123+56<sup>E</sup>

Angle  $17^{\circ}08' RT$



Rd 60

PT 141 + 73 <sup>R</sup>	14° 31' 5"
+50	13° 20'
141	10° 42'
+50	8° 04'
140	5° 26'
+50	2° 47'
139	0° 09'

PC 138 + 97<sup>B</sup> Hubs Set 25' RL

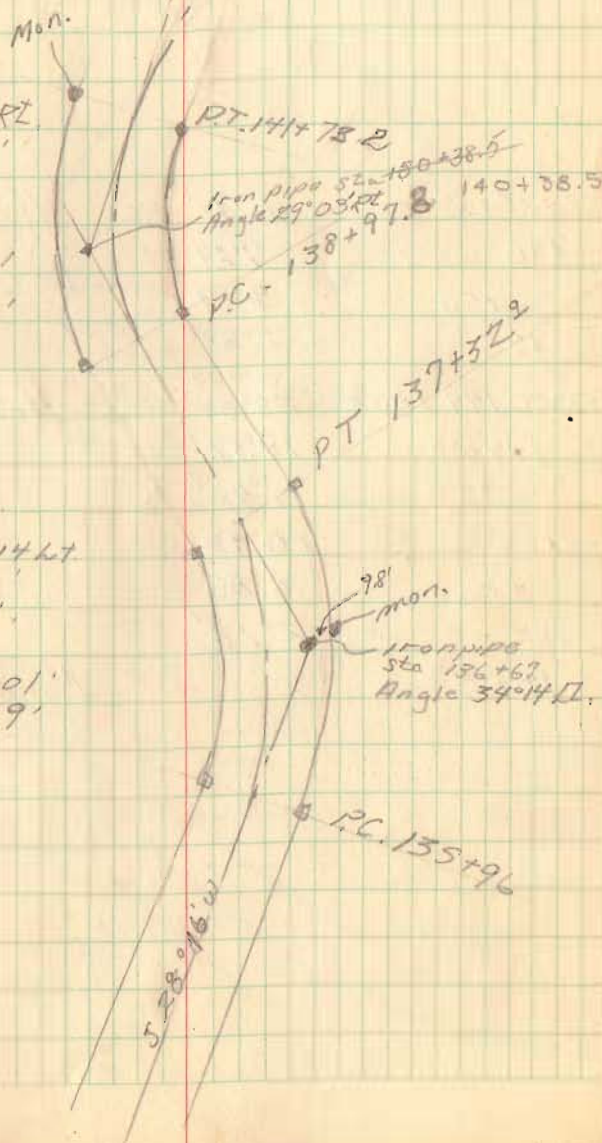
PT 137 + 32 <sup>R</sup>	17° 07'	82.9'	Hubs Set 25' RL + LT
137	13° 06'	50.3'	
+50	6° 45'	54.3'	
136	0° 30'		

PC 135 + 96 Hubs Set 25' RL + LT

22

$$\begin{aligned} \Delta &= 29^{\circ} 03' \text{ RL} \\ D &= 10^{\circ} 33' \\ T &= 140.1' \\ E &= 18.4' \\ R &= 543.86' \\ L &= 275.4' \end{aligned}$$

$$\begin{aligned} \Delta &= 34^{\circ} 14' \text{ LT} \\ D &= 25^{\circ} \\ T &= 71.0' \\ E &= 11.4' \\ R &= 231.01' \\ L &= 136.9' \end{aligned}$$

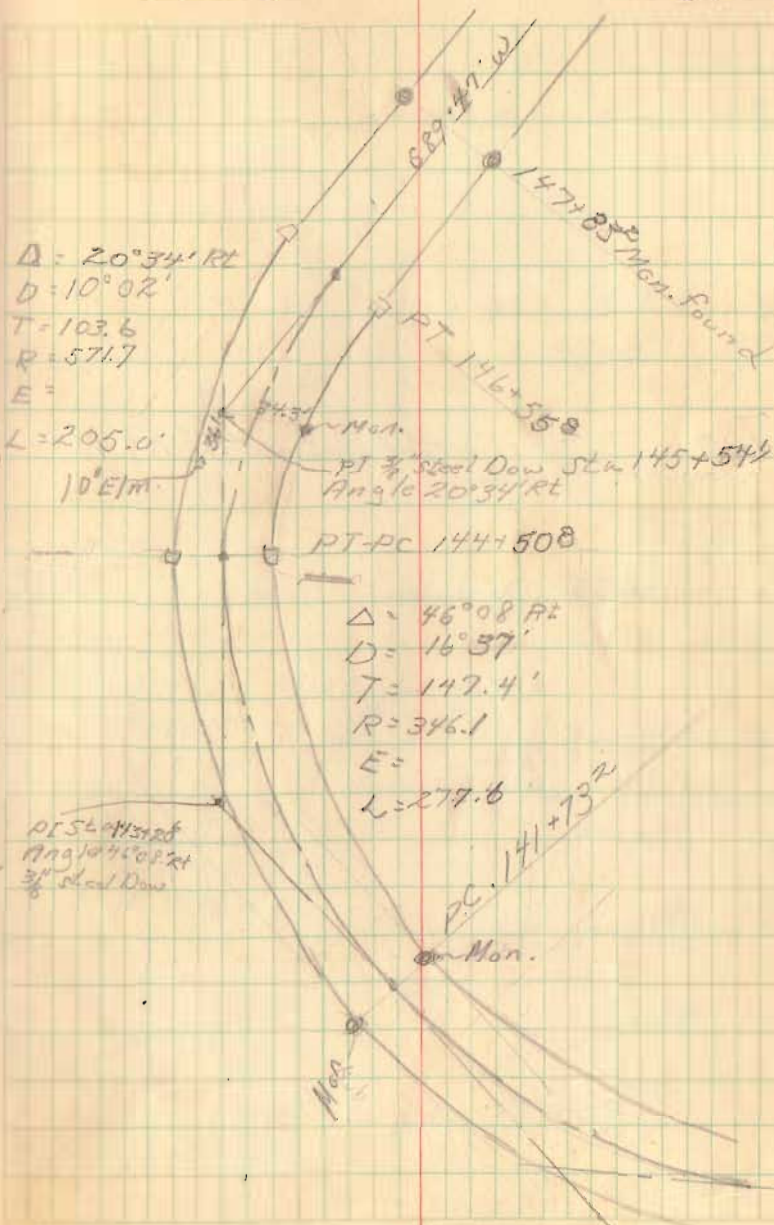


Rd #60

PT 146+55 <sup>B</sup>	10°17' RL	Hubs Set
146	7°29'	
+50	4°59'	
145	2°28'	
	0°-00'	
PT-PC 144+50 <sup>B</sup>	23°04'	Hubs Set
144+00	18°51'	
+50	14°42'	
143	10°32'	
+50	6°23'	
142	2°13'	
PC 141+73 <sup>B</sup>	2	Monuments found

June 23, 50

23





Rd 60

156+00

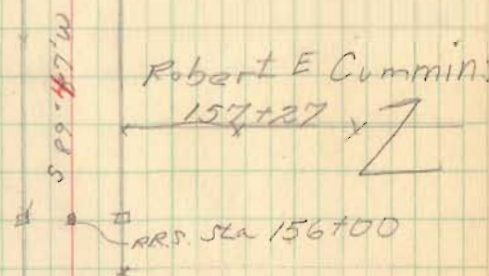
Hub Set 75' R4+14.

Sta.	Dist	
149+54.1	410.0	411.25
149+62.2	637.8	
156+00	1027.8	

149+62.2  
 42+55.8  
 3 06.4  
 1 03.6  
 4 10.0

24

25' 25" Measurements 159+83



Robert E Cummin

157+27

RRS. Sta 156+00

Mon. 219' 25" 151+835

Millard R. Notestine

Rd 79  
 149+62.2

Millard R. Notestine

3/4"  $\phi$  Iron Set  
 Sta. 149+63.45

Sta 149+07.9

Muchinippi

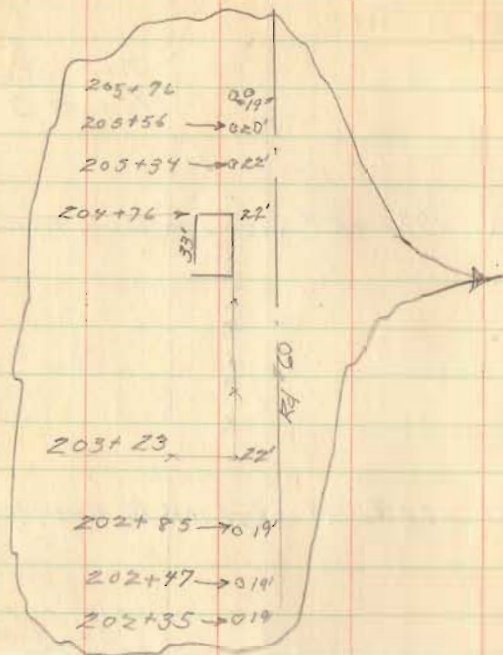
Bn 60-4.10

Sta 148+215





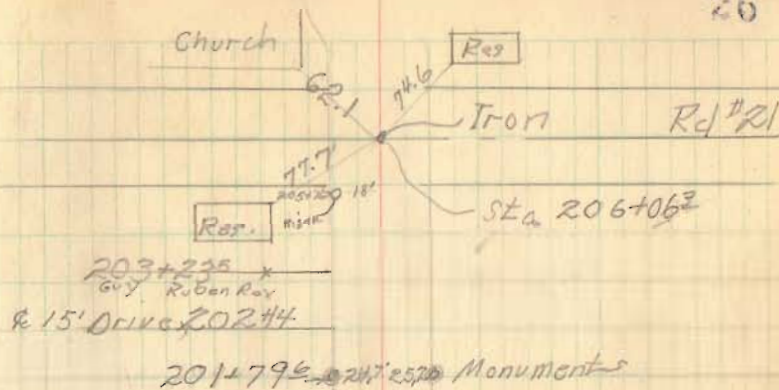
Rd #60



190+00

Hubs Set 25' RL + Lt.

26



203+235 x  
Guy R. Ben Roy  
15' Drive 202+44

201+79.5 201+25.0 Monuments

193+84.9 192+28.0 Monuments

Russell Knief

x 192+77

Ruben Guy Roy

N 55° 57' W  
S 289.57' W

Guy Ruben Roy

187+60

G. Harry +  
Oliver Aiken

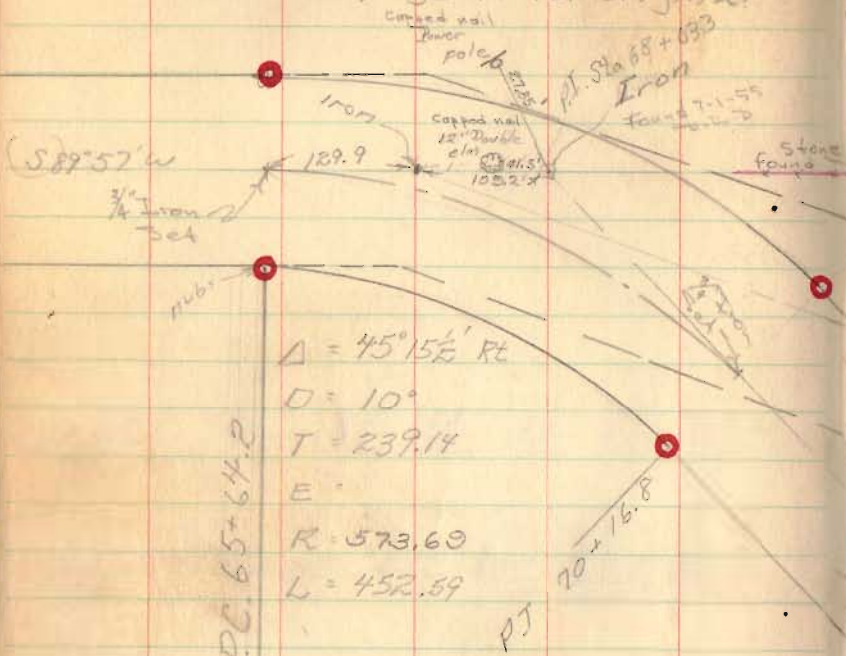
126.17'

12% culvert Sta. 187+00

185+80.4 183+25.0 Monuments

x

Rd 54 change from page 16  
See F.B. 571 page #3 for original



$\Delta = 45^{\circ} 15' 16''$  RL  
D = 10'  
T = 239.14  
E  
R = 573.69  
L = 452.89

PC	65+64.2	0° 0'
	66	1° 47'
	66+50	4° 17'
	67	6° 47'
	67+50	9° 17'
	68	11° 47'
	68+50	14° 17'
	69	16° 47'
	69+50	19° 17'
	70	21° 47'
PT	70+16.8	22° 38'

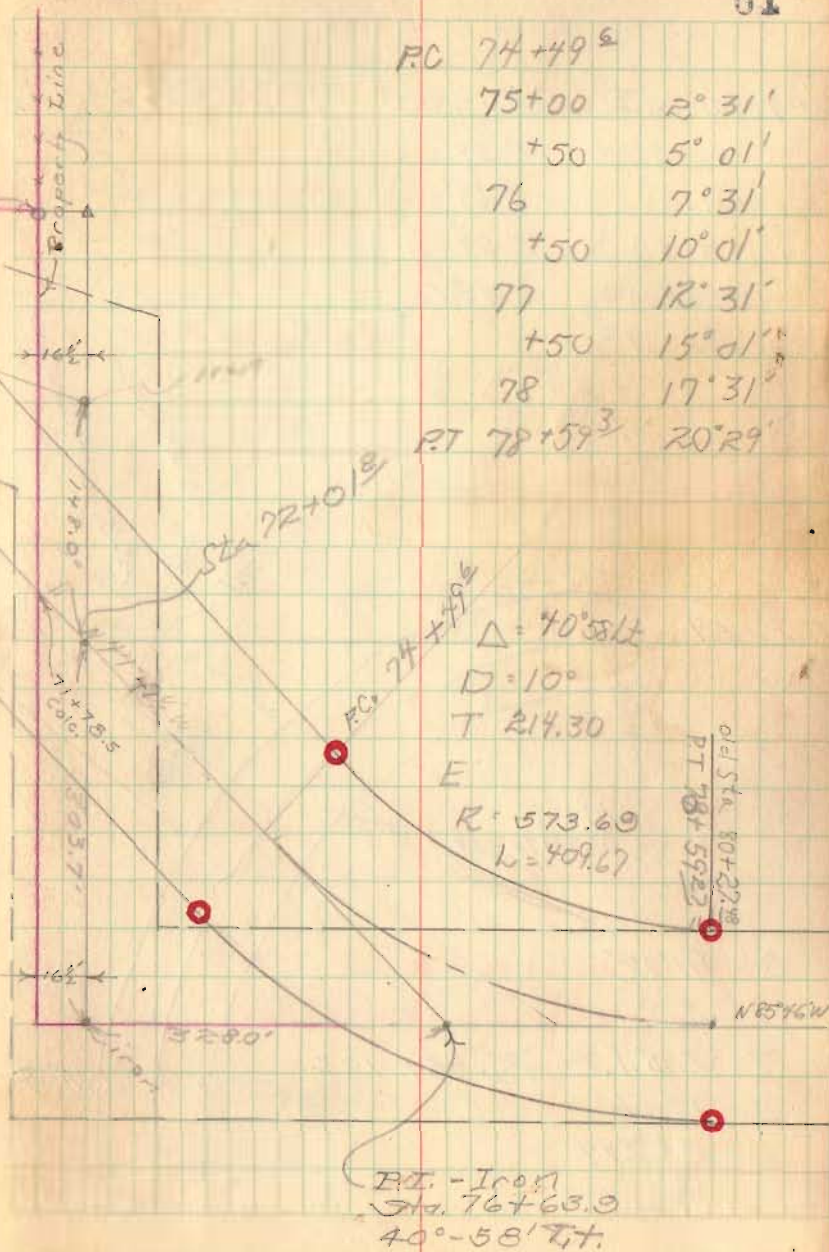
○ = RW Monuments  
set - Oct. 1953

Profile on pg. 66

Aug 4, 53

sh/rk

61



PC	74+49.6	
	75+00	2° 31'
	+50	5° 01'
	76	7° 31'
	+50	10° 01'
	77	12° 31'
	+50	15° 01'
	78	17° 31'
PT	78+59.3	20° 29'

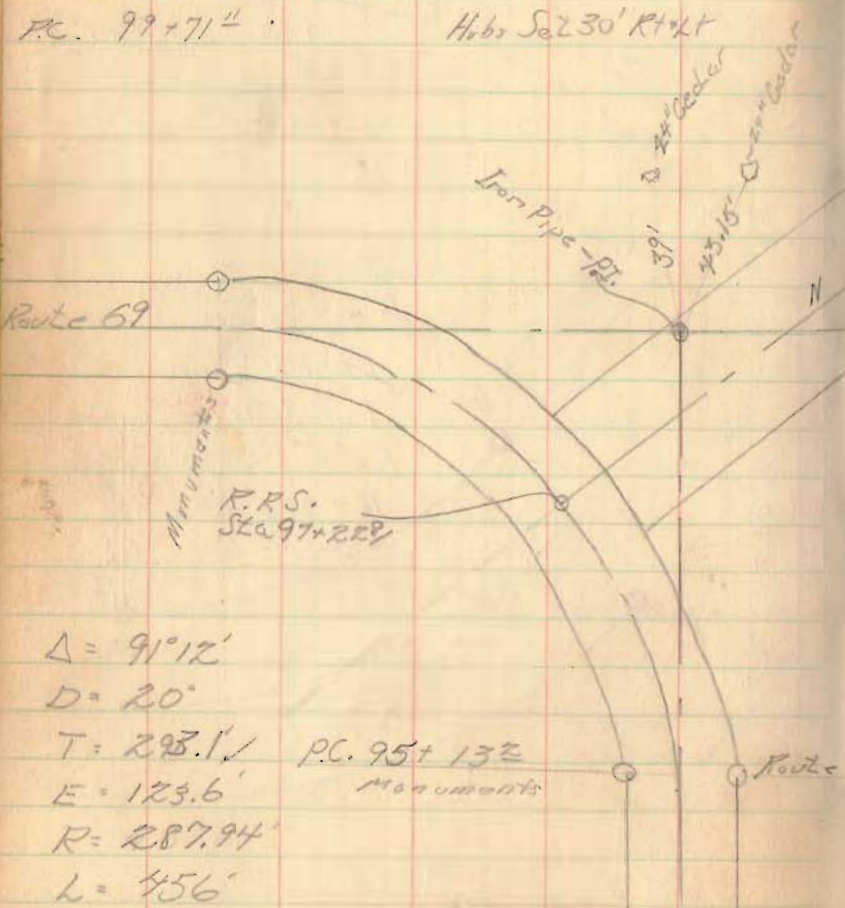
$\Delta = 40^{\circ} 58' 14''$   
D = 10'  
T = 214.30  
E  
R = 573.69  
L = 409.67

PI - Iron  
Sta. 76+63.9  
40°-58' Tt.



Rd 54 Change from pages 17+18  
**Void**

PT 101+83.71	21° 15.375'	Hubs Set 30' RT+LT
+50	17° 53'	
101	12° 53'	
+50	7° 53'	
100+00	2° 53' LT	
P.C. 99+71.4		Hubs Set 30' RT+LT

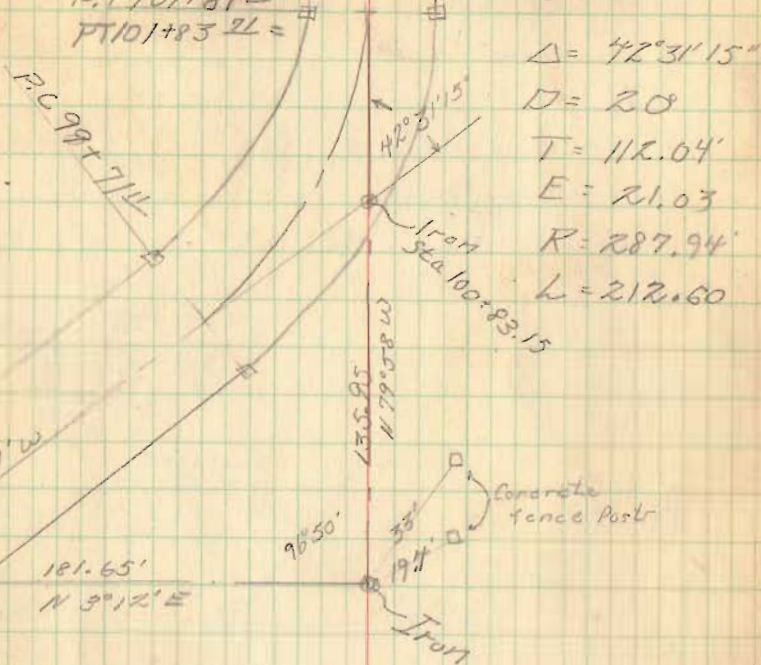


July 16, 50

Correction Sta.  
 P.T. 101+89.10  
 P.T. 101+83.71 =

O. Shirk  
 D. Daddson  
 V. D. Trick  
 D. South  
 Bob Heminger  
 E. Cora, Jr.

52



**Note:**  
 correction station  
 P.T. 101+83.71 = 101+89.10

**Note:** See pg. 63 for  
 revised survey

\*69 Sta P.T. 720+02.6

Relocation of C.H. # 54  
at Plums Corner

See pgs. 62 & 17-18 of this  
book

Staked Nov. 4, 1953

D. I. Dodson & Tom Richardson

Snow - Temp. 25°

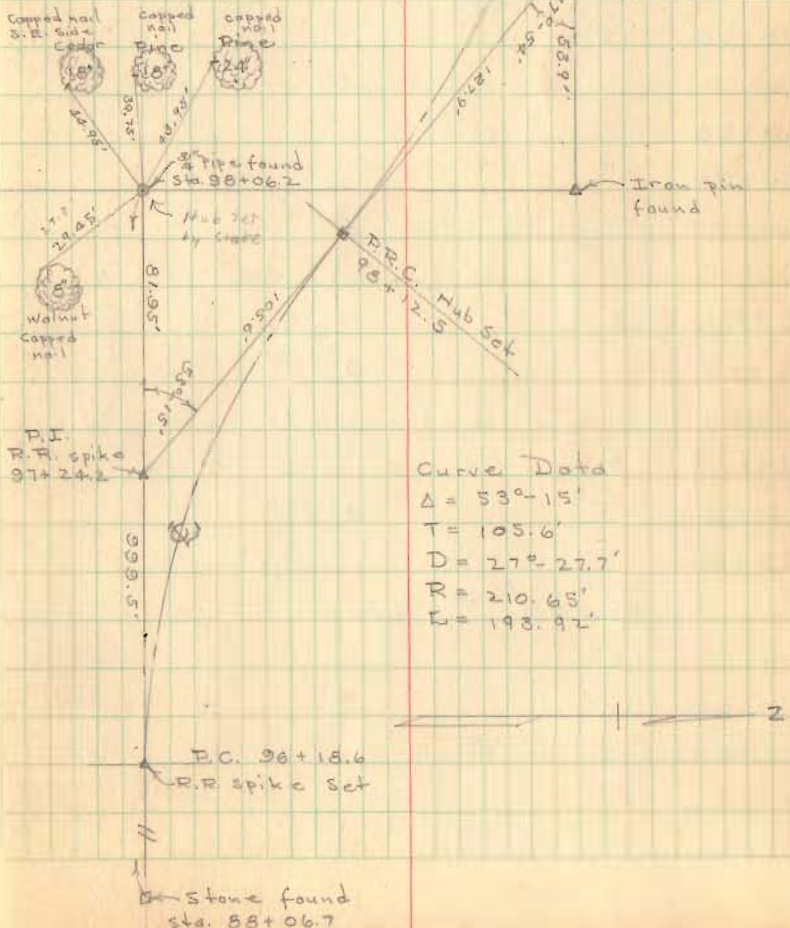
10  
8  
18.5

Corr Sta. 101+28.0  
P.T. 100+52.1 =

R.R. spike  
set 63

Curve Data

$\Delta = 47^{\circ} 54'$   
 $D = 20^{\circ}$   
 $R = 287.94'$   
 $T = 127.92'$   
 $L = 239.55'$





Survey of exchange of land at  
South Union Church Liberty twp

Sta. 93+06  
Sec plan ~~#189~~ DRAWER R # 3414  
I.C.H. # 189 Geo. line  
S.H. # 189 Route # 68

South Union Church  
to  
Oliver B. Byler 0.21 acre

Oliver B. Byler  
to  
South Union Church 1.26 acre

2041

INDEXED ON MAP

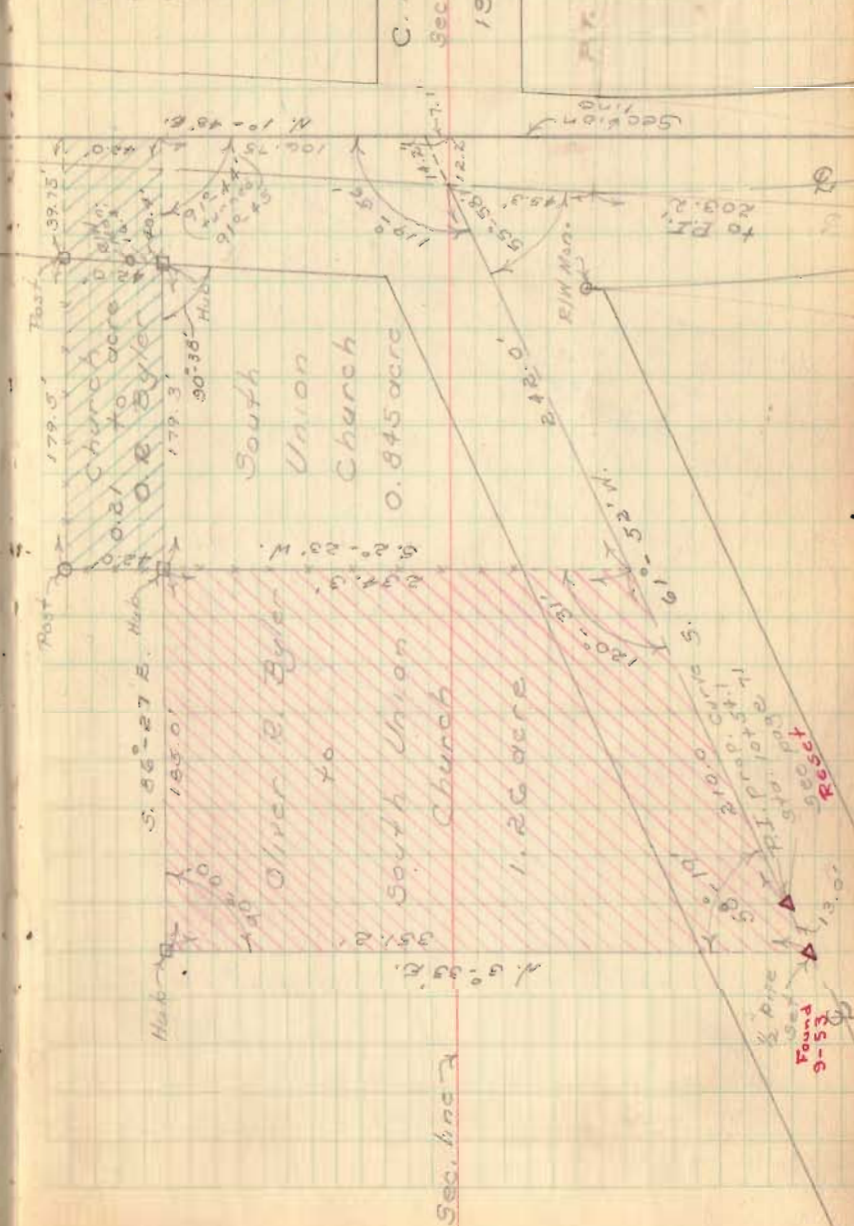
Party:  
C. E. Keyser  
G. W. Wilgus  
D. L. Dodson

C. H. #  
Sec. line 191

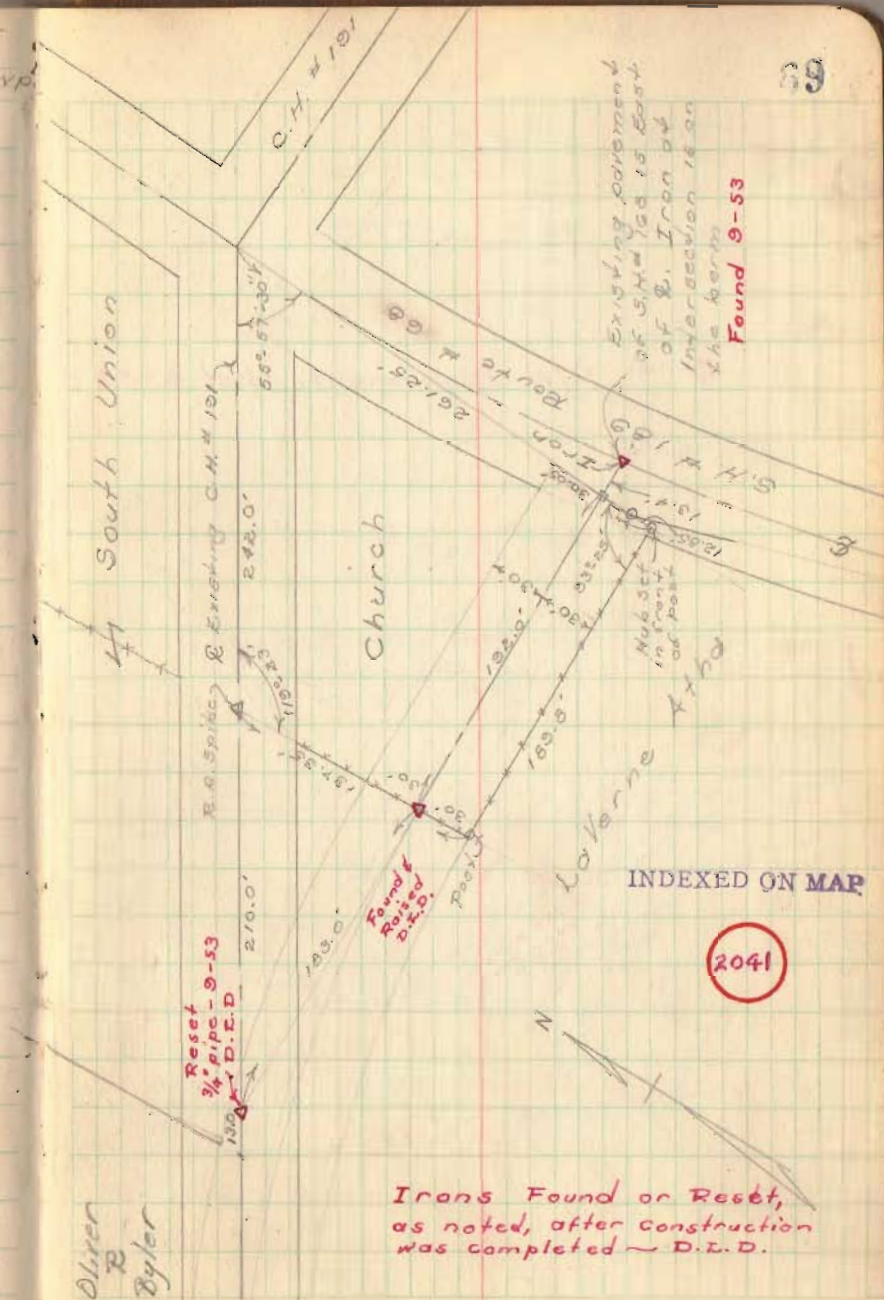
May 17, 1951

Warm

68



Proposed Change of C.H. #191  
at South Union Church - Liberty Twp.



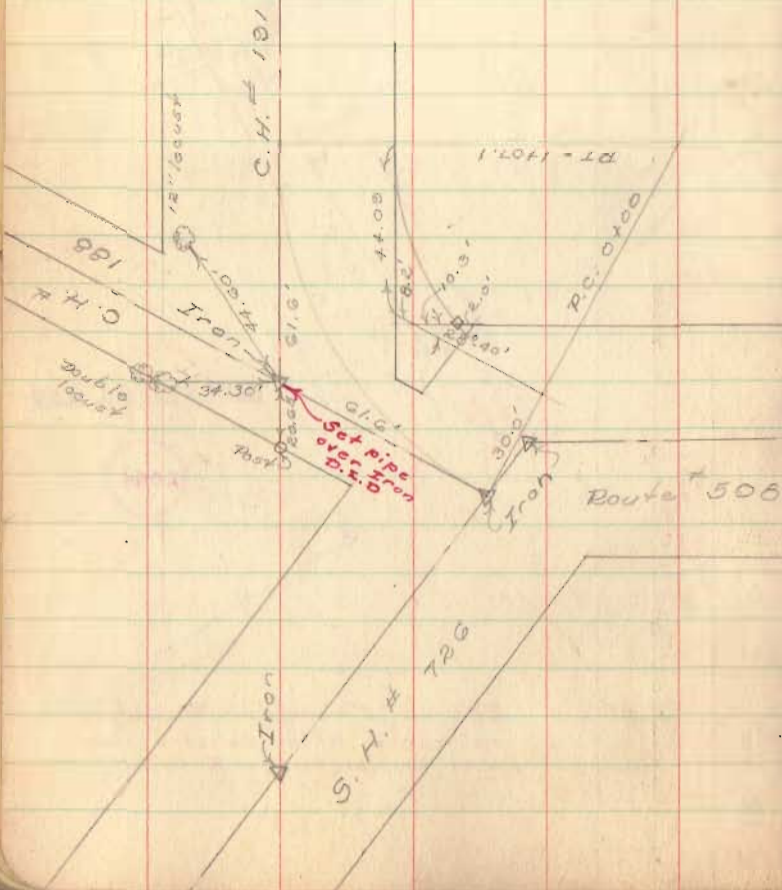


CH #191 - Survey

Staked 60' wide

See FB 552 pg 77-8

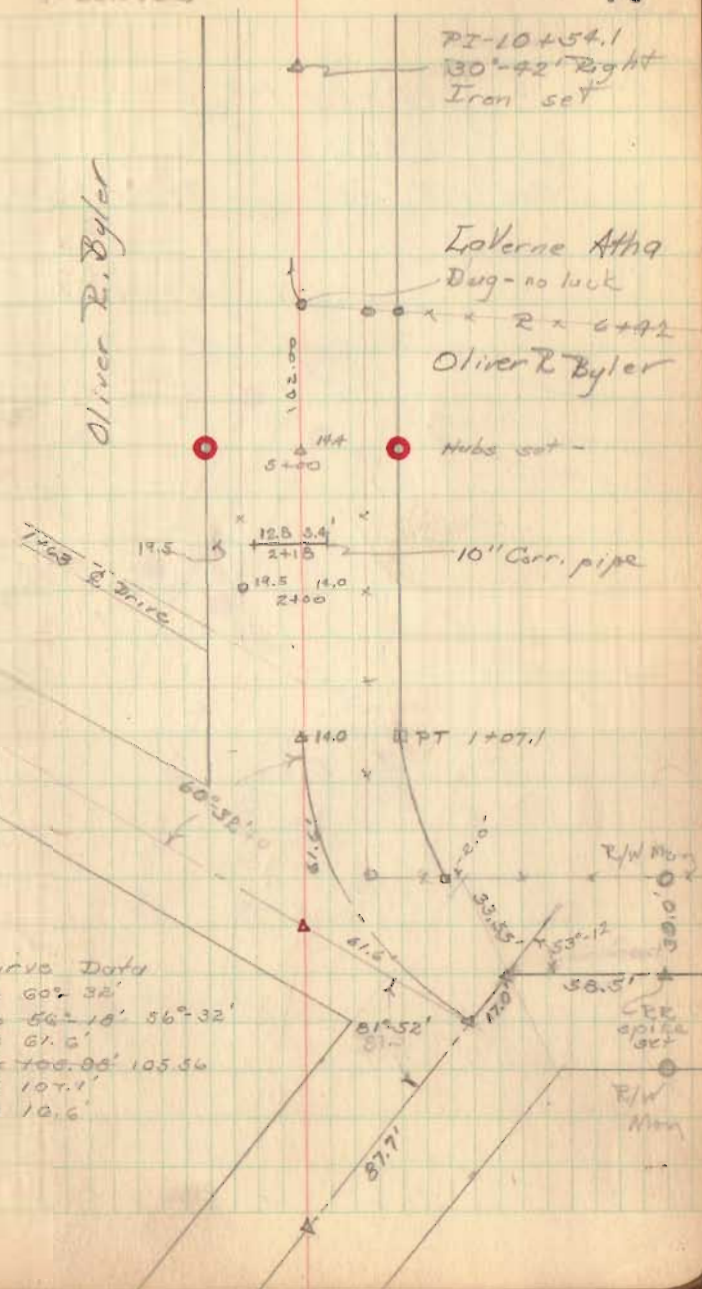
○ = R/W Monuments set 9-53



Party: - C. Kayson  
D. Dalsen  
V. Detricks

Mar. 6, 1951

70



CH #191 Survey (contd.)

Sec F3 552 pg 74.

