

Co. Rd. 154 + County Line

154-48' R/W

Nichols
Meredith

25 Sept. 1967
70° Sunny
Gurley

84

Perry Twp.

Survey's

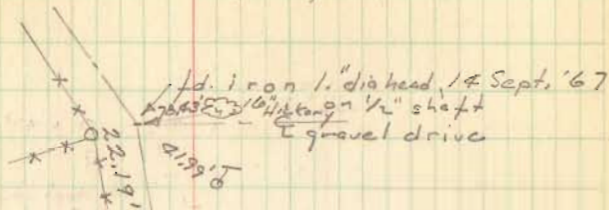
12399

12400

12395

12427

12428



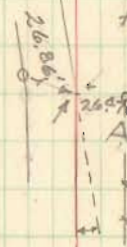
E.R. 154

fd. iron 2" x 5/8", 5" deep
14 Sept.

+ PK + rusted shiner

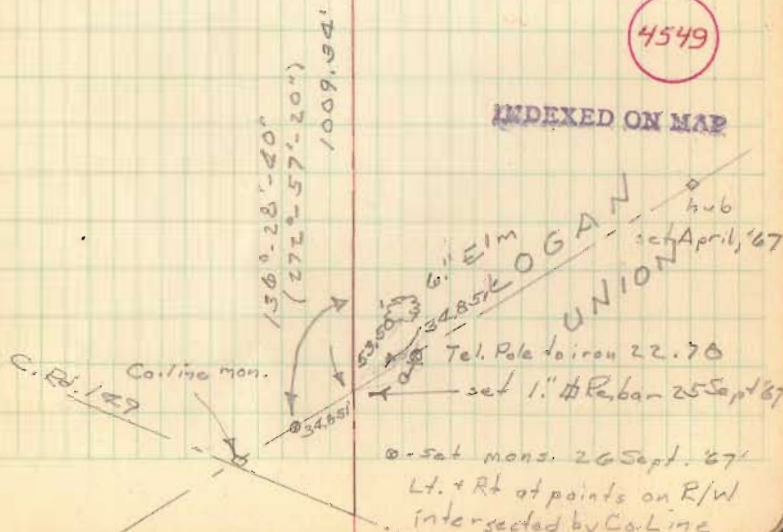
1.3' from iron

Angle Rt. $0^{\circ}-14'-40''$
($0^{\circ}-29'-20''$)



4549

INDEXED ON MAP



C. Rd. 129

Cont. line mon.

6" Elm
34.85' EOGAN
UNION
hub
set April, '67
Tel. Pole to iron 22.70
set 1" # Rebar 25 Sept '67

o-set mons. 26 Sept. '67
Lt. + Rt at points on R/W
intersected by Co. Line