

C. H. 32
LIBERTY TOWNSHIP

35+72.05 $\frac{1}{2}$ " ϕ Bar Set - Angle = $31^{\circ}56'$ Lt.

27+27.97 ϕ C.H. 249
Found Stone, Set Iron on top.

25+97.6 $\frac{1}{2}$ " ϕ Bar Set - Angle = $21^{\circ}39'$ Rt.

10+75.0 $\frac{1}{2}$ " ϕ Bar Set - Angle = $14^{\circ}13'$ Lt.

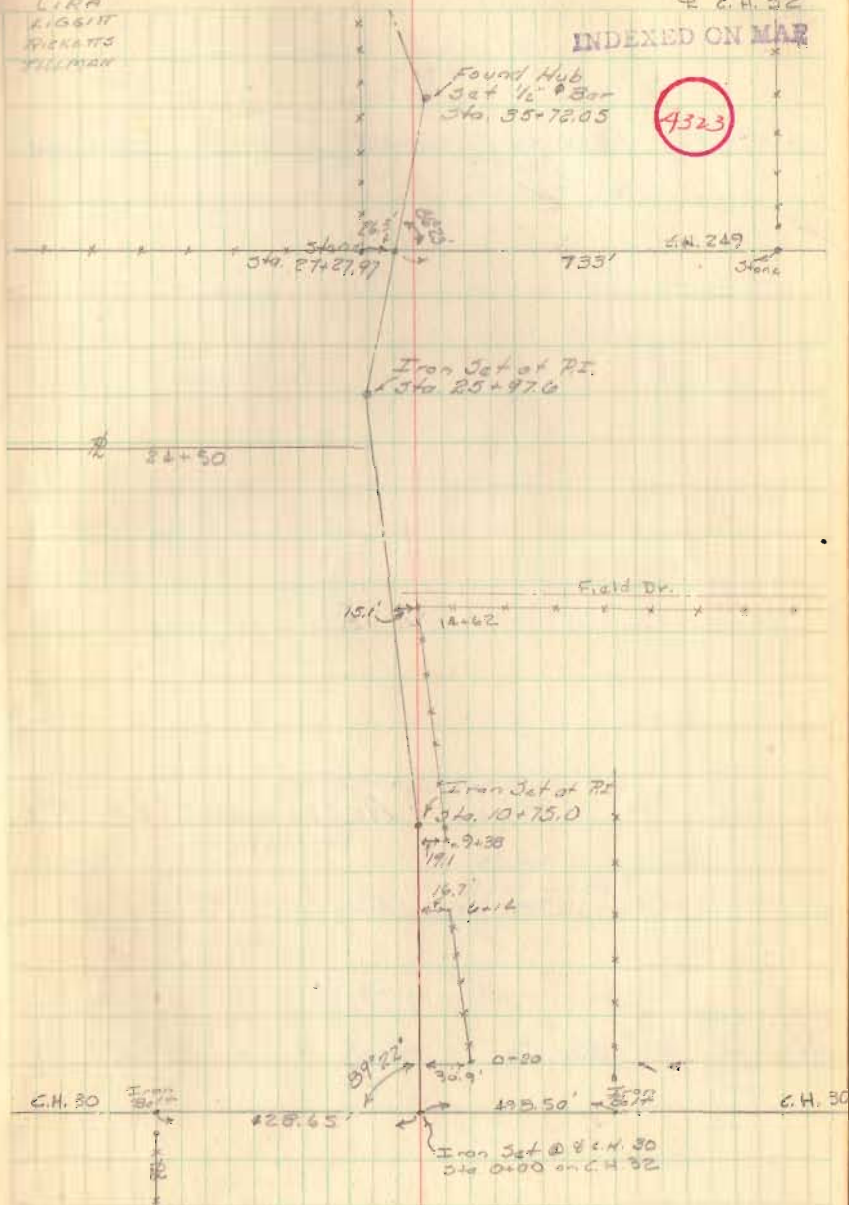
0+00 $\frac{1}{2}$ " ϕ Bar Set @ ϕ C.H. 30 & 32

B-31-62 ϕ 1/2" ϕ
Dodson
LIRA
EIGSIT
RICKATS
WILLMAN

ϕ C.H. 32

INDEXED ON MAP

4323

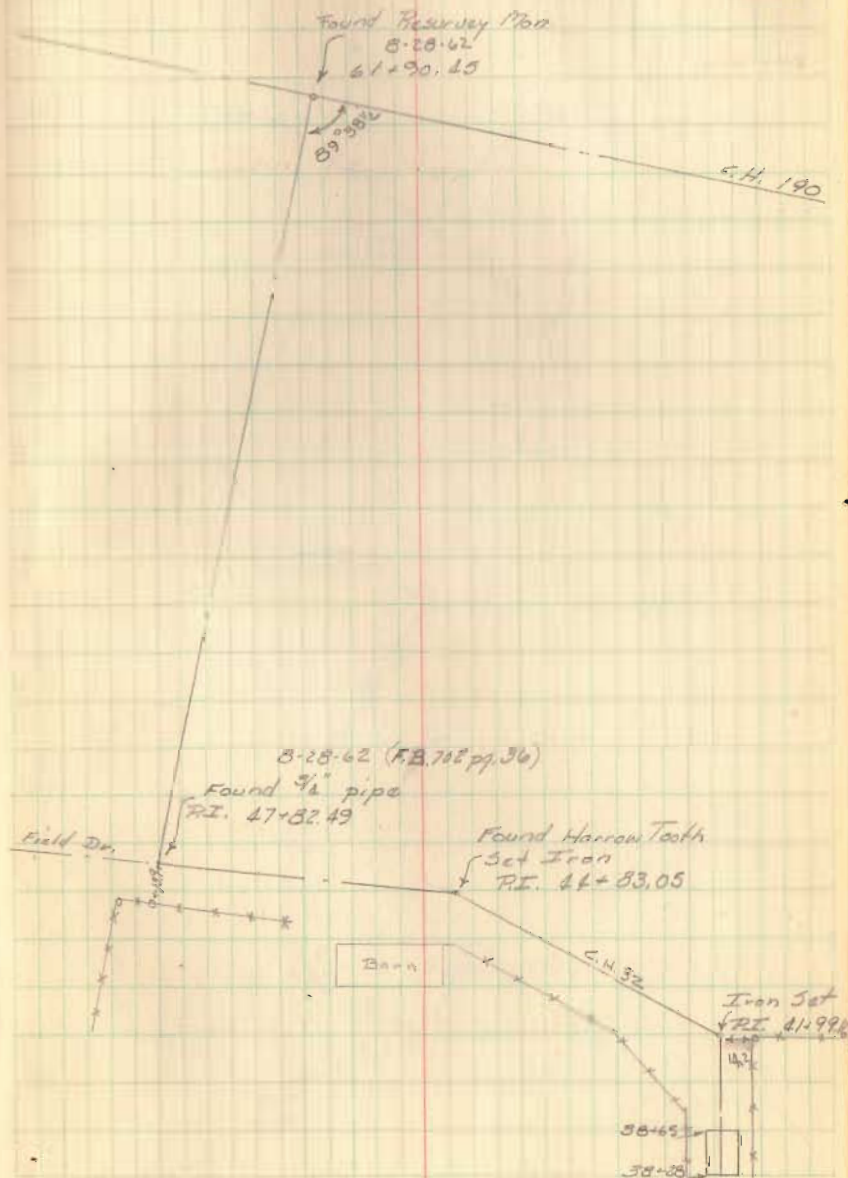


61+90.15 Resurvey Monument with $\frac{3}{4}$ " pipe set on top.

47+82.19 $\frac{3}{4}$ " Pipe Angle $108^{\circ}05'$ Rt.

44+83.05 $\frac{1}{2}$ " ϕ Bar Set Angle $13^{\circ}24'$ Lt.

41+99.16 $\frac{1}{2}$ " ϕ Bar Set - Angle $66^{\circ}00'$ Lt.



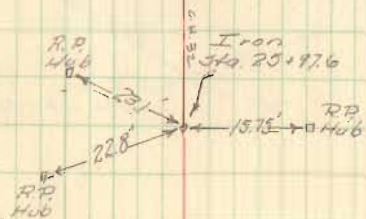
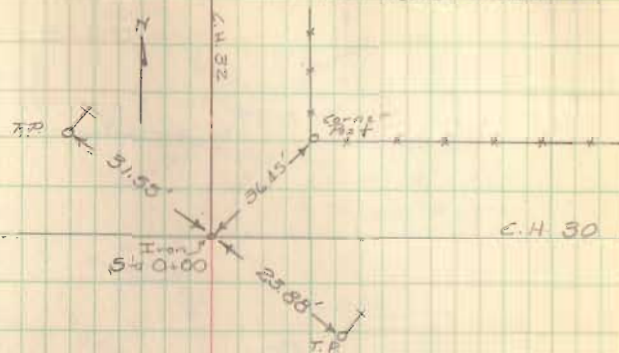
C. H. 32

J. CIRA
G. Gaslin
10-23-62
2001

4 C.H. 32

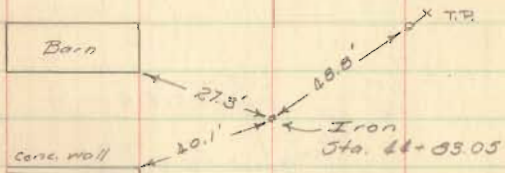
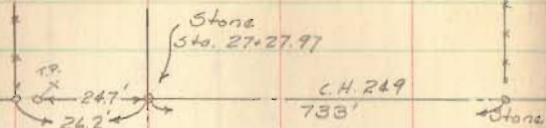
Witnessed Irons

3



CIRA
Geeslin

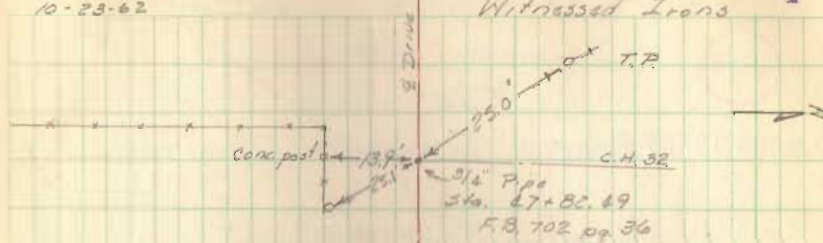
C. H. 32



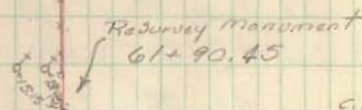
CIRA
Geeslin
10-23-62

C. H. 32
Witnessed Irons

4



3/4" Pipe
Sta. 47+82.49
F.B. 702 pg. 36



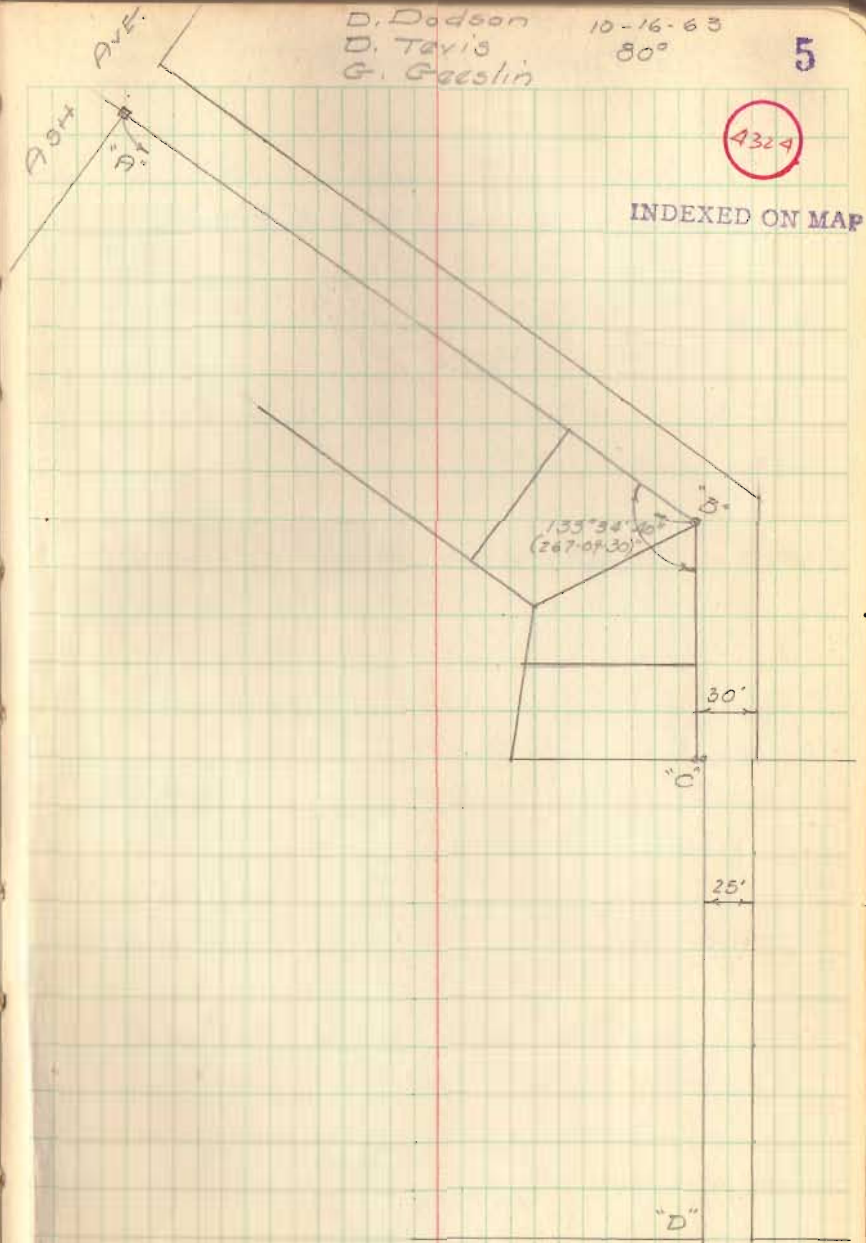
N
↑

C.H. 32

SURVEY OF
ROSEWOOD AVE
ISLAND VIEW
FOR
STOKES TOWNSHIP TRUSTEES

- A = Hub Found - Set 1" ϕ Bar
B = 1/2" pipe Found - Set 1" ϕ Bar
C = Hub Found - Set 1" ϕ Bar
C' = 1 1/2" pipe Found - 2.5' N. of "C"
D = 3/4" ϕ Bar Found
L ABC = $133^{\circ} 34 \frac{1}{2}'$ turned - F.B 385
pg. 37, = $133^{\circ} 35'$

LINE	PLAT	MEAS
A-B	342.17	342.05
B-C	98.85	98.72
C'-D	210.0'	210.14'



C.H. 49

M^c Arthur Township

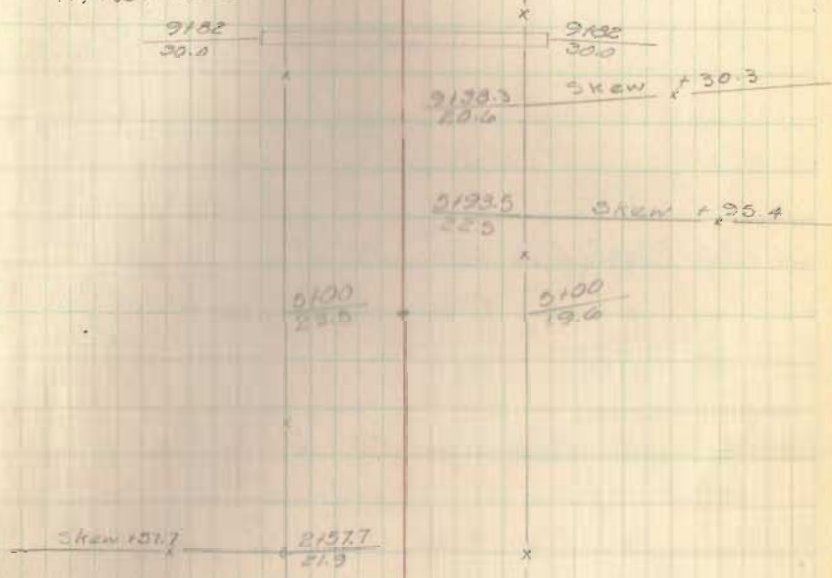
Geeslin 8-28-62
Calc. & Cummings
Hoover Temp. -83°

INDEXED ON MAP

4325

Note: Truss Bridge replaced by
60' of 9'-9" X 6'-7" Sec. Pl. Pipe Arch
in Nov. 1963

5100 Set R/W Mon 20' Rt & Lt of E



1100 Set R/W Mon 20' Rt & Lt of E

William Rush 6178.9
20.2

Joe Hurley

0100 Placed 3/4" I.P. @ E.C.H. 57 & C.H. 49

Iron post in Conc.

0+27.8
21.1

0+21.4 or Wood Con. post
18.6

30' 25"
175' 39"

Pipe set @ E.C.H. 57
Sta 0100 on C.H. 49

C.H. 49
 MS Arthur Township

35+00 Set R/W Mon 20' Rt & Lt of ϕ

30+00 Set R/W Mon 20' Rt & Lt of ϕ

25+00 Set R/W Mon 20' Rt & Lt of ϕ

20+00 Set R/W Mon 20' Rt & Lt of ϕ

16+11.30 P.K. Nail set (P.O.T.)

15+23.1 Found 1" Iron bar 0.9' Lt of ϕ

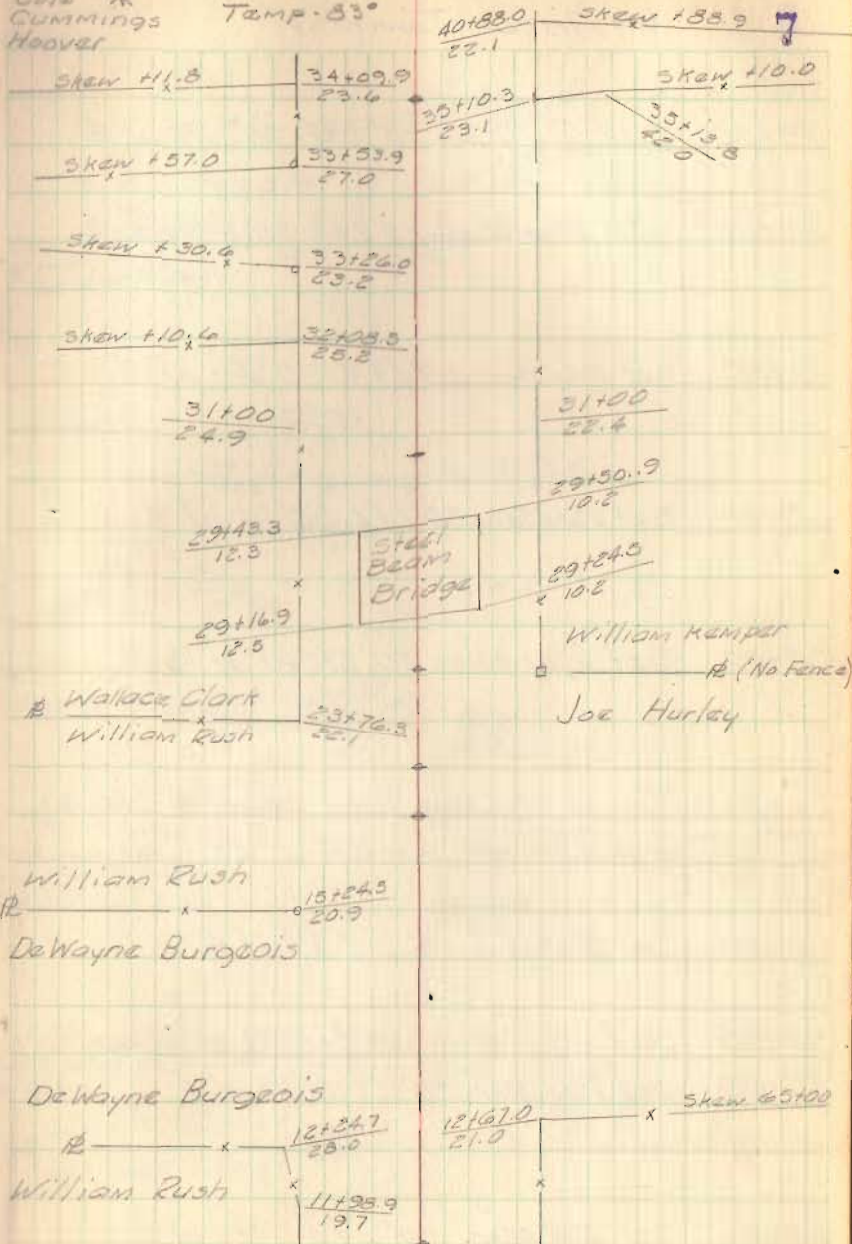
12+23.1 Found 1" Iron bar 0.6' Lt of ϕ

11+00 Set R/W Mon 20' Rt & Lt of ϕ

Geasin
 Cole X
 Cummings
 Hoover

9-23-62

Temp. 83°



C.H. 49
M^e Arthur Township

79+00 Set R/W Mon 20' Lt & 30' Rt of ϕ

75+00 Set R/W Mon 20' Lt & 30' Rt of ϕ

70+00 Set R/W Mon 20' Lt & 30' Rt of ϕ

65+00 Set R/W Mon 20' Lt & 30' Rt of ϕ

58+00 Set R/W Mon 20' Lt & Rt of ϕ

56+93.10 Found 1" I. Pipe over stone & C.H. 37
and C.H. 49 - $0^{\circ}02.7'$ Lt.

55+00 Set R/W Mon 20' Lt & Rt of ϕ

50+00 Set R/W Mon 20' Lt & Rt of ϕ

45+00 Set R/W Mon 20' Lt & Rt of ϕ

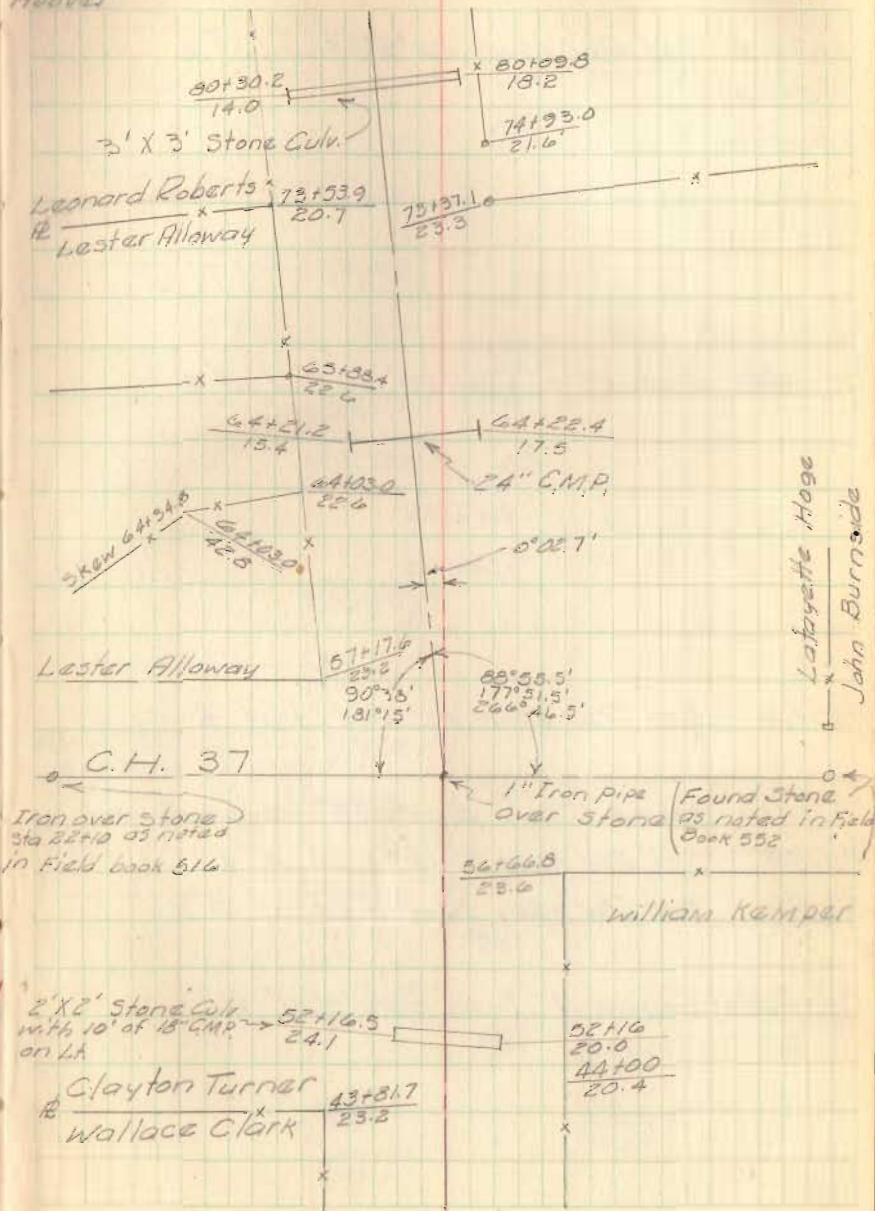
40+00 Set R/W Mon 20' Lt & Rt of ϕ

Geoslin
Cole
Cummings
Hoover

8-28-63

TEMP. 53°

8



CH. 49

M^cArthur Township

115+00 Sat R/W Mon 20' Rt & Lt of $\frac{1}{2}$
 110+00 " " " " " " "
 106+00 " " " " " " "

101+00 Sat R/W Mon 20' Rt & Lt of $\frac{1}{2}$

95+00 Sat R/W Mon 20' Rt & Lt of $\frac{1}{2}$

91+41.4 Found 1" Iron pin 2.10' Rt of $\frac{1}{2}$

90+00 Sat R/W Mon 20' Rt & Lt of $\frac{1}{2}$

85+00 Sat R/W Mon 20' Rt & Lt of $\frac{1}{2}$

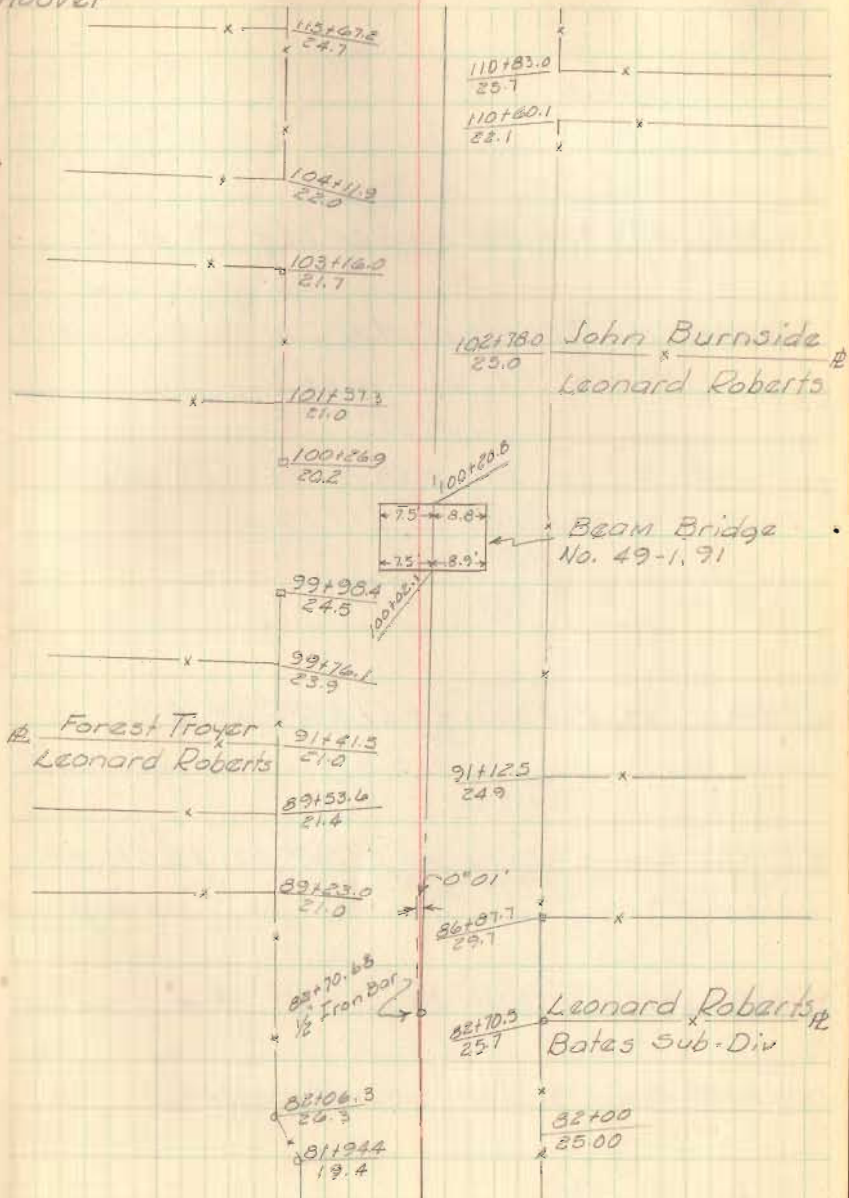
82+70.68 Found 1" Iron Bar - 0'01' Rt.

Geeslin
 Cole
 Cummings
 Hoover

8-28-62

Temp 83°

9



CH 49
M^c Arthur Township

Geeslin
Cole &
Cummins
Hoover

8-29-62
Temp 84°

137+33.23 (P.T.) Set R/W Mon 20' Lt & Rt of \mathcal{C}
134+60.10 Set 1" Iron bar at \mathcal{C} C.H. 101 & CH 49
(Pt. also PI of Curve)

Curve Data:

$I = 5^{\circ}28'$
 $D = 1^{\circ}00'$
 $T = 273.54'$
 $R = 5729.58$
 $L = 546.67$
 $E = 6.53$
PI Sta - 134+60.10
PC Sta - 131+86.56
MP Sta - 134+53.89
PT Sta - 137+33.23

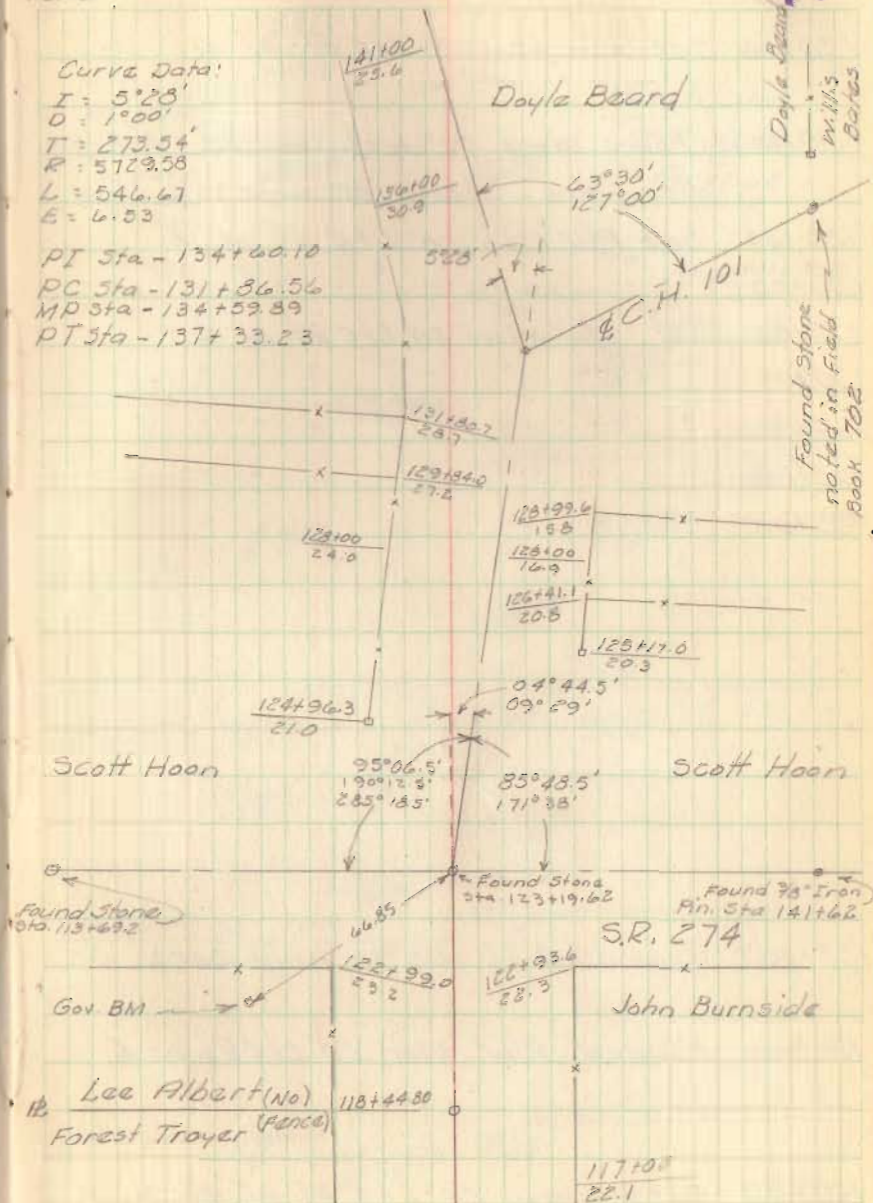
131+86.56 (P.C.) Set R/W Mon 20' Lt & Rt of \mathcal{C}
130+00 Set R/W Mon. 20' Lt & Rt of \mathcal{C}

125+00 Set R/W Mon. 20' Lt & Rt of \mathcal{C}

123+19.62 Found Stone on \mathcal{C} S.R. 274 & \mathcal{C} H. 49

120+00 Set R/W Mon 20' Lt & Rt of \mathcal{C}

118+44.80 Found $\frac{3}{4}$ " Iron bar on \mathcal{C} - No Angle



CH 49

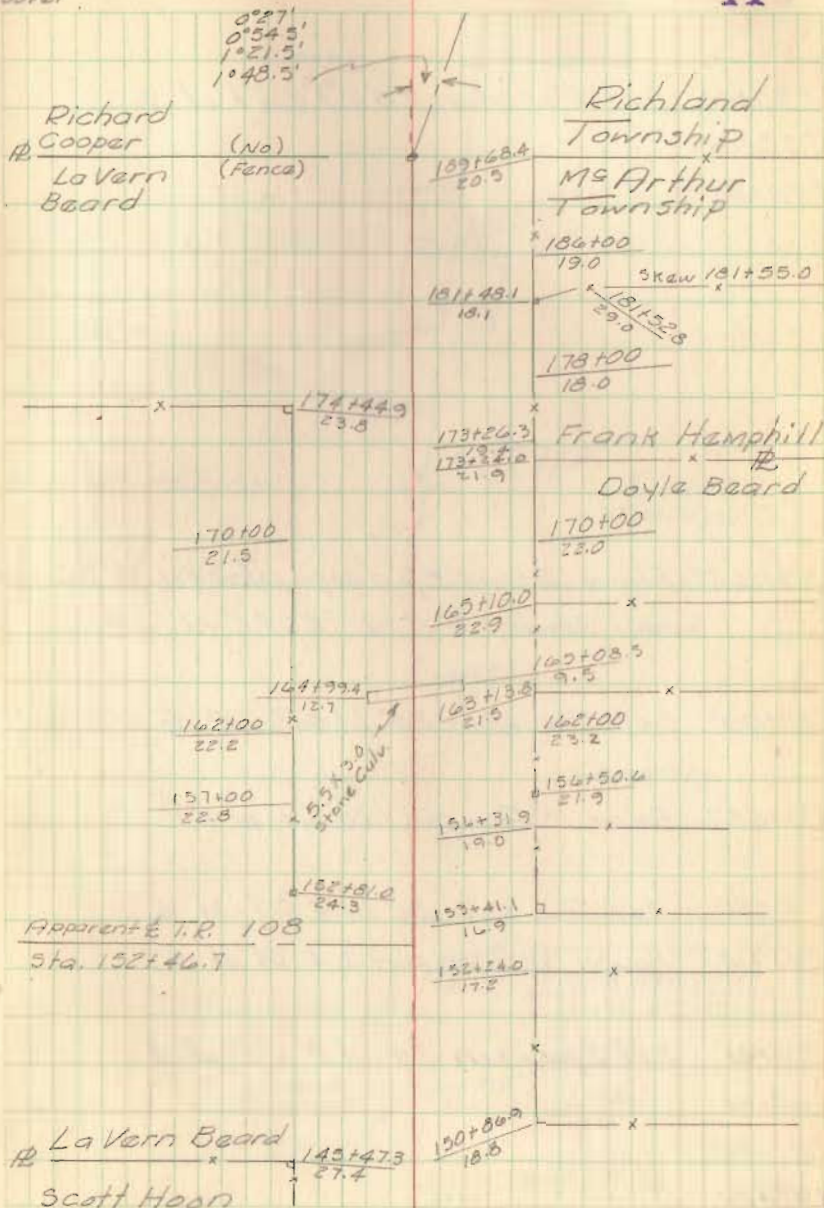
Ms Arthur Township

- 190+00 Set R/W Mon. 20' Lt & Rt. of $\frac{1}{4}$
- 189+68.68 Found stone 24" deep - placed $\frac{3}{4}$ " Iron pipe over stone - Stone on Township line
- 185+00 Set R/W Mon 20' Lt & Rt of $\frac{1}{4}$
- 180+00 " " " " " " " "
- 175+00 Set R/W Mon. 20' Lt & Rt. of $\frac{1}{4}$
- 170+00 " " " " " " " "
- 164+00 " " " " " " " "
- 160+00 " " " " " " " "
- 155+00 " " " " " " " "

Geeslin
Cole &
Cummins
Hoover

9-4-63

11



CH 49
Richland Township

230+00 Set R/W Mon 20' Lt & Rt of $\frac{1}{4}$
 225+00 " " " " " " "
 220+00 " " " " " " "

219+16.22 Found Stone 2.5' deep placed $\frac{3}{4}$ " Iron pipe
 over Stone - $\frac{1}{4}$ C.H. 105 & C.H. 49

218+00 Set R/W Mon 20' Lt & Rt of $\frac{1}{4}$

216+68.7 Found $\frac{1}{2}$ " Iron pin 1.20' Rt. of $\frac{1}{4}$

215+00 Set R/W Mon 20' Lt & Rt of $\frac{1}{4}$

207+10.1 Found $\frac{1}{2}$ " Iron pin 1.4' Rt of $\frac{1}{4}$

210+00 Set R/W Mon 20' Lt & Rt of $\frac{1}{4}$

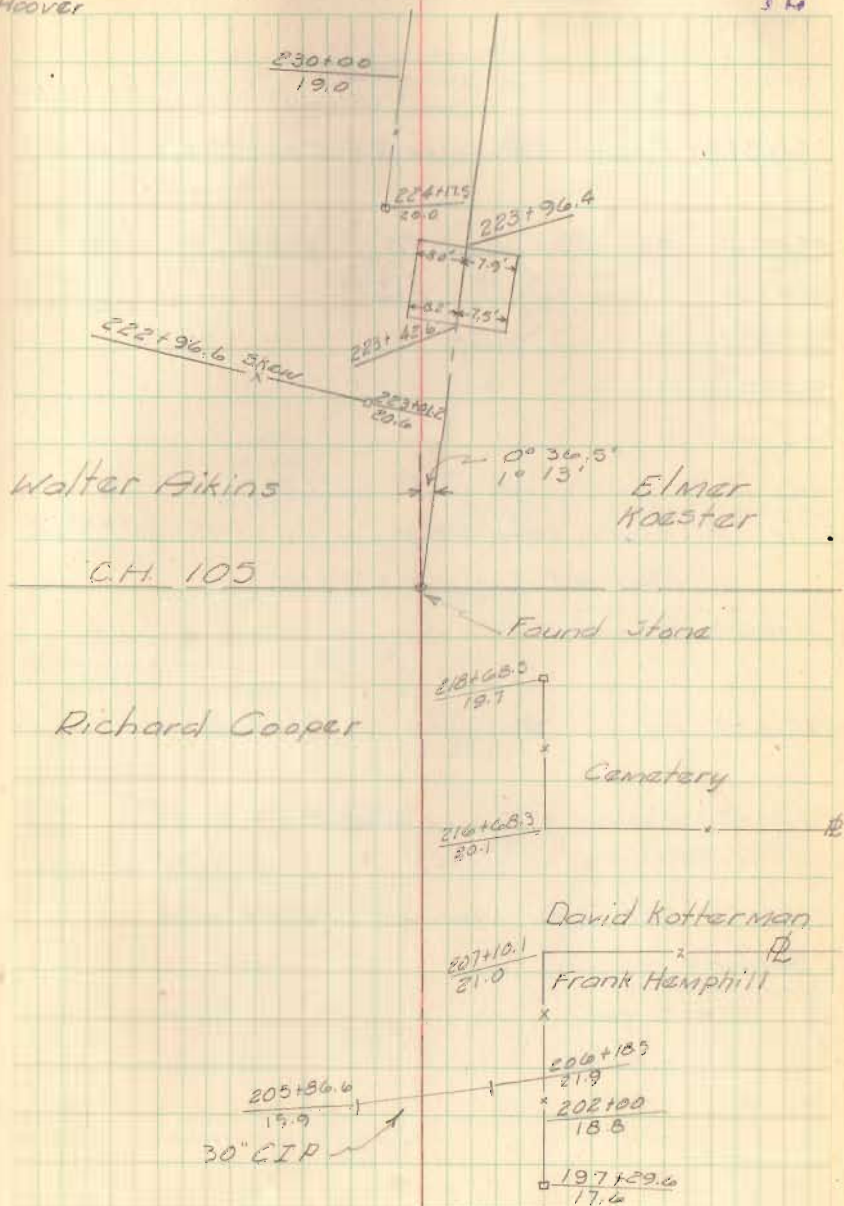
205+00 " " " " " " "

200+00 " " " " " " "

195+00 " " " " " " "

Geeslin 9-9-62
 Cole
 Cummings
 Hoover Temp 63°

12



C.H. 49
Richland Township

Geeslin
Cole &
Cummings
Hoover

Sept 6, 1962
Temp 65°

13

264+54.93 Found R.R. spike @ E.C.H. 39 & E.C.H. 49

263+00 Set R/W Mon 20' Lt & Rt of E

260+00 " " " " " " "

255+00 " " " " " " "

250+00 " " " " " " "

245+00 " " " " " " "

257+12.09 Found Stone @ N.W. Cor. V.M.S. 9951 - 0°23' R+
Also NE Cor. V.M.S. 9950

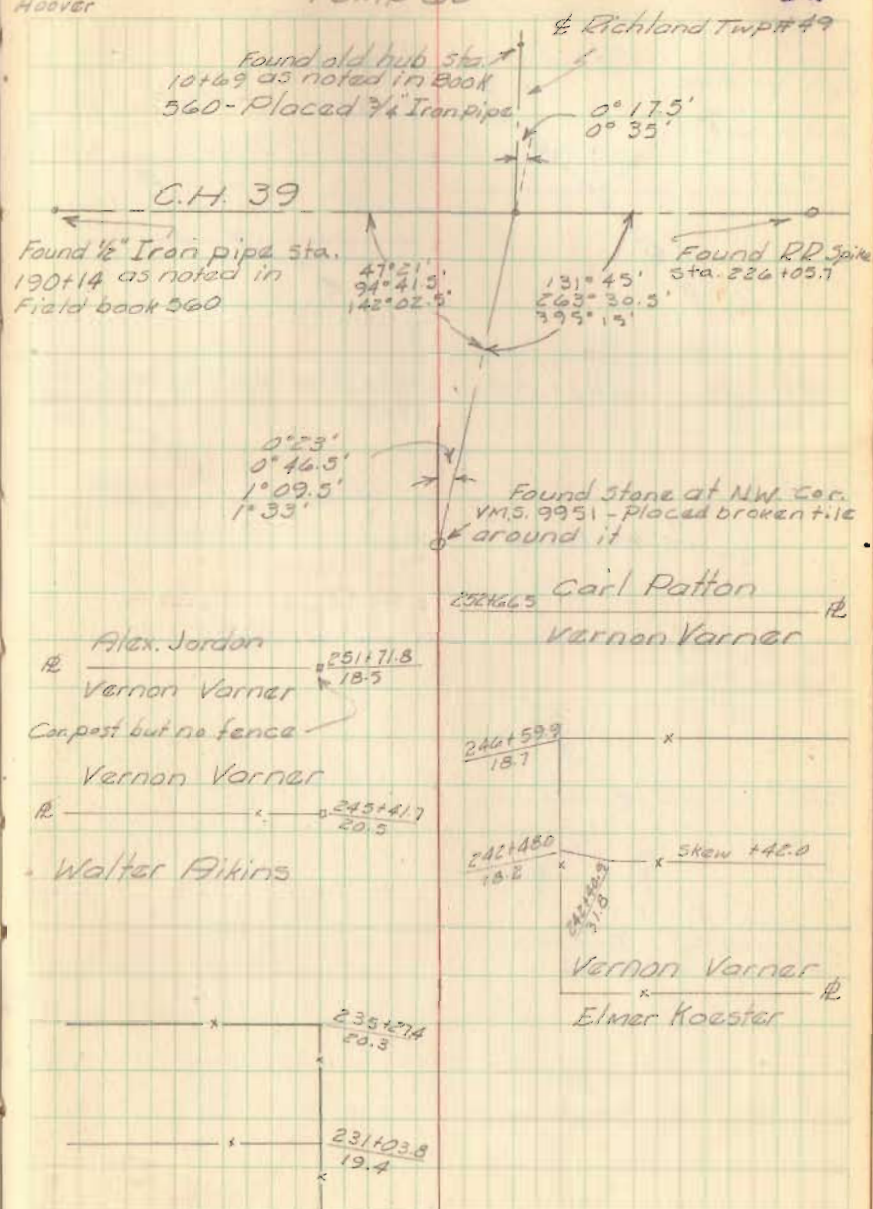
252+66.3 Found 1" Iron pin 1.1' Lt of E

246+61.9 Found 1" Iron pin 1.6' Lt of E

245+43.3 Found 1" Iron pin 0.5' Lt of E

240+00 Set R/W Mon 20' Lt & Rt of E

236+00 " " " " " " "

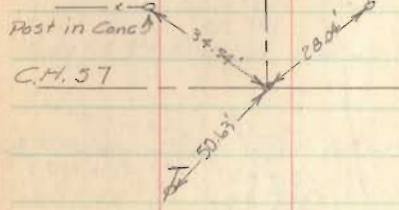


CH 49

M^E Arthur & Richland Township

Sta 0+00 Witnessed Points

3/4" Iron Pipe



CH 57

219+16.22 - 3/4" Iron Pipe



P.O.T. Sta. 16+11.80

P.K. Nail



257+12.09 N.W. Cor VMS 9951
stone N.E. Cor VMS 9950



Sta. 56+93.10

1" Iron Pipe

CH 37



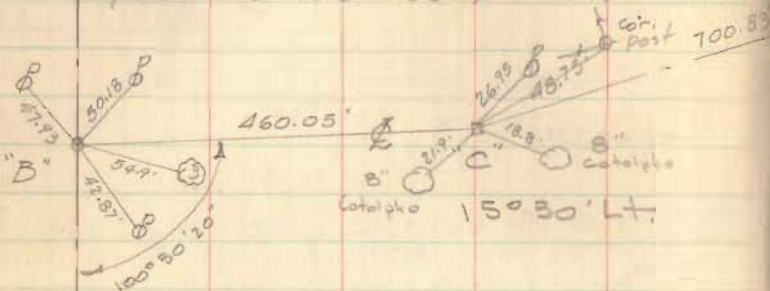
189+68.68 Township
3/4" Iron Pipe Line



SURVEY OF C.H. 157

ZANE TOWNSHIP

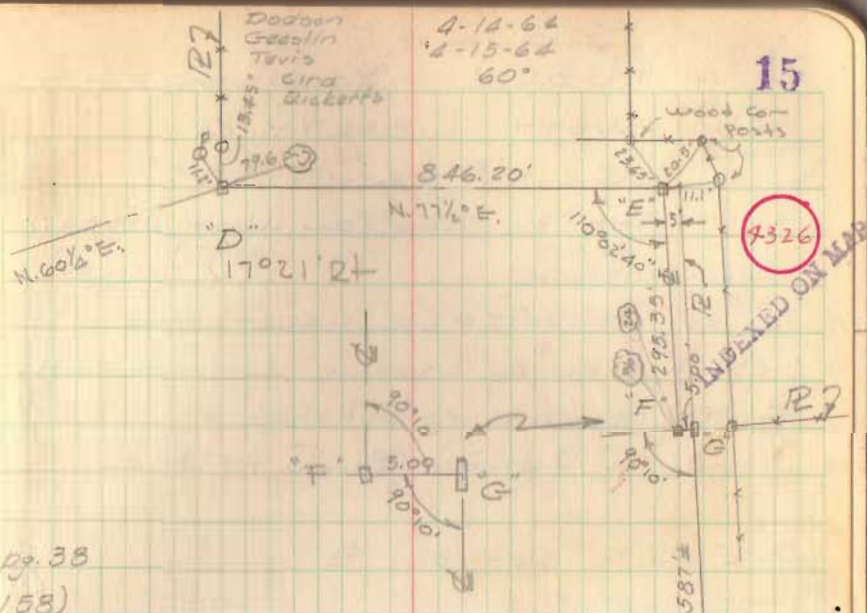
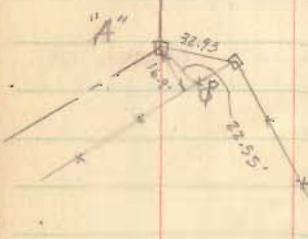
R/W stated for Allen Devault
from "B" to "D" = 60' & "D" to "H" = 30'



C.H. 158

- A = 1" ϕ bar set from witnesses Blk 643,
- B = Iron found Sta. 38+58.5 (C.H. 158)
- C = Hub found - See Blk 418, pg. 33,
- D = Hub found "
- E = 1" ϕ Bar set
- F = 1" ϕ Bar set - 5.00' W. of "G"
- G = Stone found @ surface 4" \times 12"
- H = R Devault & Chamberlain
- I = Wood corner post, used for

R/W WIDTH
 "B to D" = 60'
 "D to H" = 30'
 "H to I" = 60'
 See Road Record No. 1, pg. 115



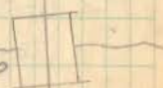
pg. 38
 158)
 Set 1" ϕ Bar (1' N. of S. edge of pumt.)
 Set 1" ϕ Bar
 R Devault
 Chamberlain

centerline

"F" - 36" Catapha N.W. 14.4
 24" " " 35.1
 Cor. post East 17.50'

"G" - 36" Catapha N.W. 20.0'
 24" " " 37.4'
 Cor. post East 12.50'

"I" on post



Lone

SURVEY OF
PUBLIC SQUARE
WEST LIBERTY, O.

FOR
THE VILLAGE OF WEST LIBERTY

☒ of DETROIT-COLUMBUS-NEWELL STS.
established by bisecting curbs or walks.
☒ McCLELLAN established as
shown in INSKEEP BK. 13, PG. 124.

P-K nails set on ☒

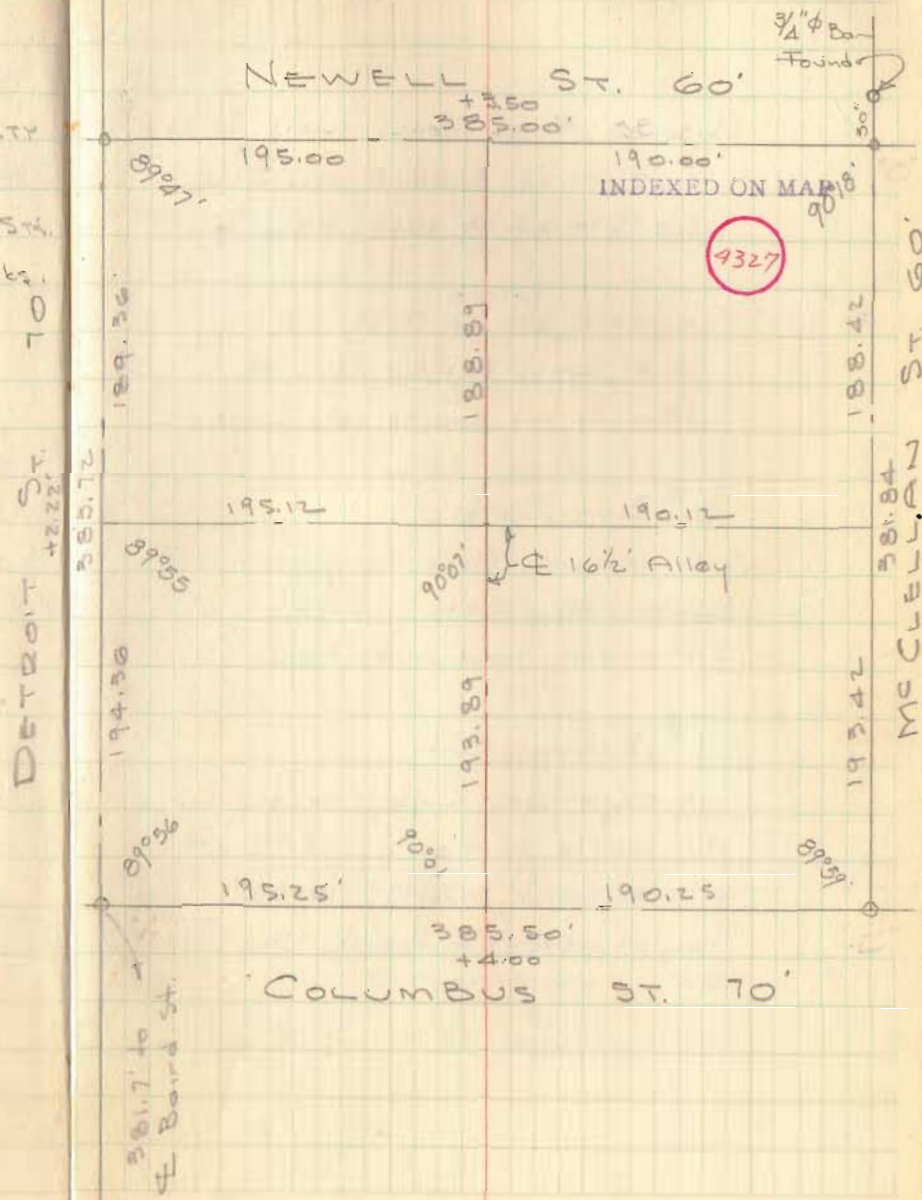
REF:

INSKEEP BK 13, PG. 124
JOB No. 2511, Drawer "R",
Survey of lot 23, by C. Mengarini

Dodson
Tavis
Circ &

9-15-64
70°

16



PUBLIC SQUARE
CONT'D.

"A" Chiseled + on Conc. walk, Set.
0.65' W. of E. edge Conc. walk
2.0' N. of N. edge E&W. Conc. walk

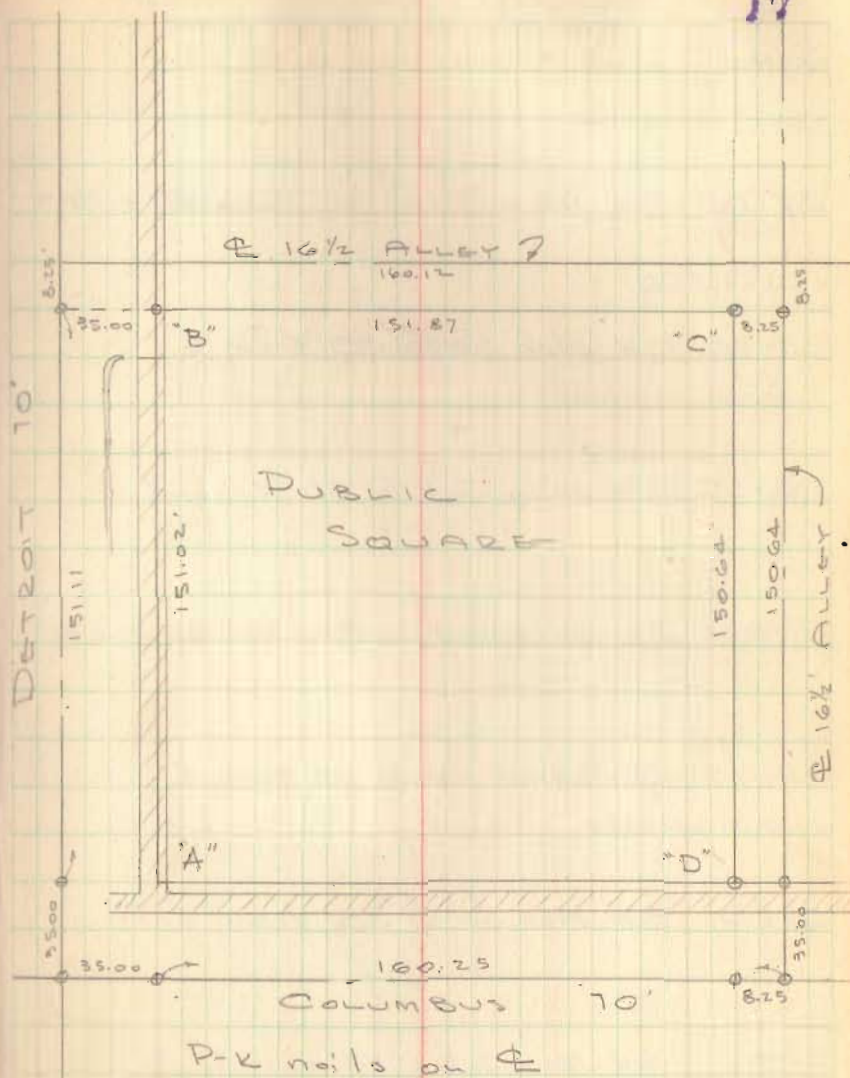
"B" P-K nail set in T-35,
0.4' W. of E. edge of walk
13.0' N. of end of Conc. walk

"C" $\frac{5}{8}$ " ϕ Bar Set
S.E. cor. Conc. Block Cor., North 16.10
Power pole, East 13.45'
24" maple, southeast 26.6'

"D" $\frac{5}{8}$ " ϕ Rebar Set
N. edge Conc. walk, south 2.6'
12" maple, northwest, 15.75'
Fire Hydrant, North, 15.80'
Power pole, Southeast, 15.65'

9-15-64

17



C.H. No. 50

Rushcreek & Bokescreek Twp.

R/W Mon Set for 60' Road

R.R. Spikes on E of R/W Mon.

Sta.

30+00 R/W Mon. Set @ 30' from E

25+00 R/W Mon. Set @ 30' from E

20+00 R/W Mon. Set @ 30' from E

16+89.0 Iron Pin Found - $\Delta = 0^{\circ}05'$ Rt - R/W Mon. Set

13+00 R/W Mon. Set @ 30' from E

6+00 R/W Mon. Set @ 30' from E

1+00 R/W Mon. Set @ 30' from E

0+00 Iron Pin Found

Aug-1957 - Surrey
Aug-1964 - Mon. Set

Shirk
Silverstein
Tevis
Heminger

19

Imogene Porter

Boyd Stanfield

* PB Sta. 32+65.7

* PB Sta. 27+59

4328

INDEXED ON MAP

Sta 26+07

Sta 26+01

N. 83 3/4° E

Geo. J. Ansley

Harry Kramer Jr.

Sta 16+89.0
Iron Pin Found * PB
 $\Delta = 0^{\circ}05'$ Rt.

John E. Kinney

E. C.H. 50

Car Post

Car Post

E. C.H. 110

E. C.H. 5

Iron Pin

E. Pole

Car Post

C.H. 5

Sta.

65+00 R/W Mon. Set @ 30' from E

60+00 R/W Mon. Set @ 30' from E

55+00 R/W Mon. Set @ 30' from E

53+10.1 Iron Pin Found - $\Delta = 0^{\circ} 09' 1/2''$ Lt.

50+00 R/W Mon. Set @ 30' from E

48+31.3 Iron Pin Found - $\Delta = 0^{\circ} 12' 1/2''$ - Section Line45+00 R.R. Spike Set on E but no R/W Mon. Set

40+00 R/W Mon. Set @ 30' from E

35+00 R/W Mon. Set @ 30' from E

19

John S. Watkins

* R Sta. 64+88 *



Choice Beck

John E. Kinney

Iron Pin Found
Sta 53+10.1
 $\Delta = 0^{\circ} 09' 1/2''$ Lt.

E. CH. 12
To Walnut Grove

Choice Beck

* R Sta. 50+26.3 *

V.M.S. 9936

E. CH. 131

V.M.S. 10041

Iron on Stand
Sta 48+31.3
 $\Delta = 0^{\circ} 12' 1/2''$

Cemetery

V.M.S. 13199

V.M.S. 10631

* R Sta. 47+06 *

W^o B. Green

Arrol B. Cost

* R Sta. 40+45 *

* R Sta. 36+30 *

Imogene Porter

Boyd Stanfield

C.H. 50 cont'd.

Sta.

105+00 R/W Mon Set @ 30' Rt. Only

97+41.80 Ahead

97+39.66 Back P.T. - R/W Mon set @ 30' Lt. only

96+41.7 P.I. - Iron Pin Found - $\Delta = 20^\circ - 28'$ Lt.

95+41.60 P.C. - R/W Mon Set @ 30' from \mathcal{L}

90+00 R/W Mon Set @ 30' from \mathcal{L}

85+00 R/W Mon Set @ 30' from \mathcal{L}

81+43.1 Iron Pin Found - No Angle

80+00 R/W Mon. Set @ 30' from \mathcal{L}

75+00 R/W Mon Set @ 30' from \mathcal{L}

70+00 R/W Mon Set @ 30' from \mathcal{L}

20

CURVE DATA

$\Delta = 20^\circ - 28'$

$D = 10^\circ - 20'$

$R = 554.48'$

$T = 100.10'$

$L = 198.06'$

$E = 8.96'$

Wellington T. Mitchell

V.M.S. 12201

Iron Pin Found
Sta. 96+41.7
 $\Delta = 20^\circ - 28'$

Survey Cor. Stone

Sta. 96+41.7

V.M.S. 13200

Odin D. Frey

John S. Watkins

C.H. 12

← To Big Springs



Iron Pin Found
Sta. 81+43.1
No Angle

John E. Kinney

45 Sta.

150+00 R/W Mon Set @ 30' from E

145+00 R/W Mon Set @ 30' from E

140+00 R/W Mon Set @ 30' from E

135+00 R/W Mon Set @ 30' from E Rt. Only

130+00 R/W Mon Set @ 30' from E

125+00 R/W Mon. Set @ 30' from E

120+00 R/W Mon. Set @ 30' from E

116+07.6 Iron Pin Found - $\Delta = 0^\circ - 05' \text{ Rt.}$

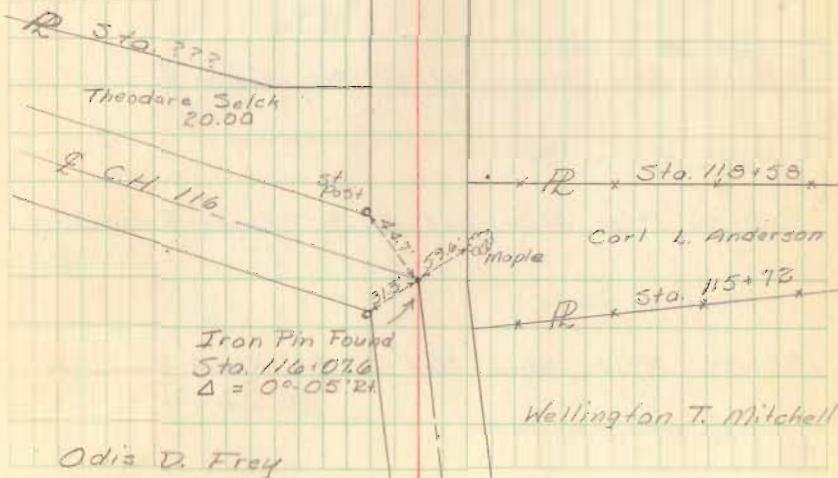
115+00 R/W Mon. Set @ 30' from E

110+00 R/W Mon. set @ 30' from E

Bakescreek
BushcreekTownship
Township

Richard T. Deubler

Elton E. Kinney



Sta.

190+00 R/W Mon. Set @ 30' from E

187+39.2 Iron Pin Found - No Angle

185+00 R/W Mon. Set @ 30' from E Rt. Only

180+00 R/W Mon. Set @ 30' from E

175+00 R/W Mon. Set @ 30' from E

170+00 R/W Mon. Set @ 30' from E

169+75.1 Iron Pin Found - No Angle

165+00 R/W Mon. Set @ 30' from E

160+00 R/W Mon. Set @ 30' from E

155+00 R/W Mon. Set @ 30' from E

9938

Emmett H. Johnson

Z Survey Line

9937

9938

R Sta 187+39.2
Iron Pin Found
Sta. 187+39.2
No Angle

9937

Earl F. Fish

Donald C. Frederick

* R * Sta. 171+90 *
E C.H. 267Iron on Stone
Sta 169+75.1
No AngleOld
School

Elza G. Bechter

163+042

84 39'

162+657

82 60'

* R * Sta 162+50

Theodora Satch

Orville Gibson

* R * Sta 151+72

Richard T. Deubler

* R * Sta 151+72

Elton E. Kinney

C.H. 50 cont'd.

Sta.

223+66.6 Ahead
223+73.0 Back Correction sta of angle - Iron Pin - $\Delta = 13^{\circ} 29' Rt.$

220+00 R/W Mon. Set @ 30' from E Rt. Only

215+00 R/W Mon. Set @ 30' from E

210+00 R/W Mon. Set @ 30' from E

205+00 R/W Mon. Set @ 30' from E

200+00 R.R. Spike Set on E but no R/W Mon. Set

195+25.0 Iron Pin Found - R/W Mon. Set - $\Delta = 16^{\circ} 29' Rt.$

23

Wm S. Ramsey

Wilbur M. Ramsey

Iron Pin Set
Sta. 223+66.6
 $\Delta = 13^{\circ} 29' Rt.$

* RR * Sta. 223+58.6 * RR * Sta. 223+58.6 *
Maple Pear

Hazel Deardorff

Hazel Deardorff

Stone Found
Sta. 214+61
No Angle

200' Post * RR * Sta. 214+61

* RR * Sta. 209+25.9 * 94' Iron Pin Found

Colvin E. Deskard

Emmett K. Johnson

* RR * Sta. 197+24.2 * 97' Iron Pin Found

Iron Pin Found
Sta. 195+25.0
 $\Delta = 16^{\circ} 29' Rt.$

212' Post in road
Oak

Earl E. Fish

23 Sta.

236+37.2 Iron Placed in E. S.P. 292

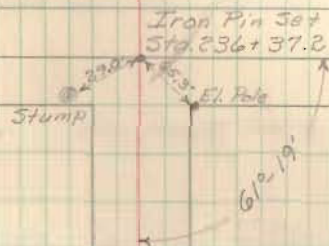
235+00 R/W Mon. Set @ 30' from E

230+00 R/W Mon. Set @ 30' from E

225+00 R/W Mon. Set @ 30' from E

24

E S.P. 292

W^m S. RamseyW^m S. Ramsey~~+ TD + Sta 224+87~~

Wilbur M. Ramsey

Survey of C.H. No 13

Parry + Rushcreek Twp

13+19 24" Conc. pipe w/24" CMD Ext. on Rt.

10+00 R/R Spike set for R/W Man's.

5+90.3 Harrow tooth fd. 115 Lt. of $\frac{1}{2}$

5+00 R/R Spike set for R/W Man's.

1+76.75 Harrow tooth found- 0.73' Lt of $\frac{1}{2}$

1+44.91 R/R Spike set for R/W Man (Rt only)

1+00 R/R Spike set for R/W Man. (Lt only)

0+00 Iron pin fd @ int. CR 8, CR 12,
and SR 292

2/22/64

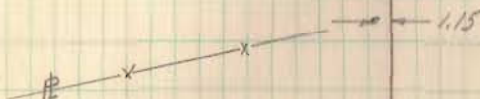
Tavis
Cummins
Maucher

25

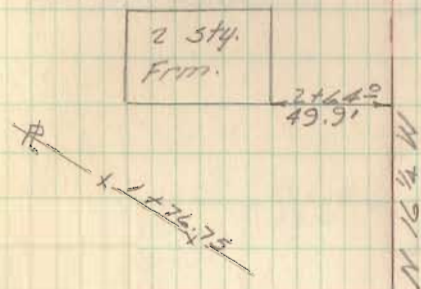
4329

INDEXED ON MAP

Walter P. Folk

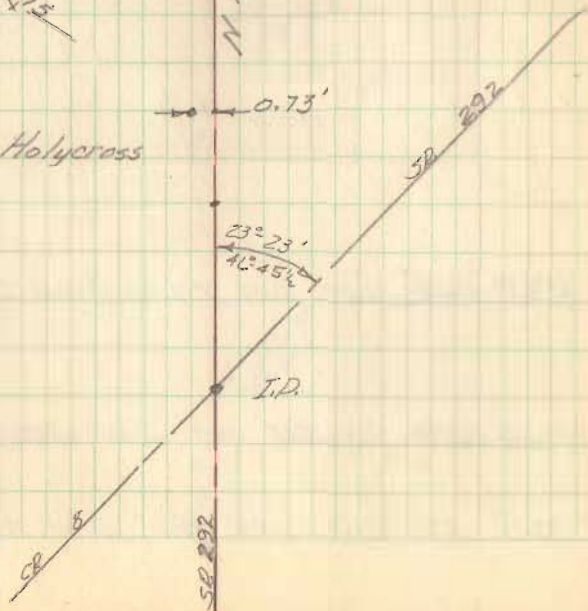


Gladys M. Tanner



Edwin D. Holycross

0.73'



I.P.

CR 8

SR 292

30+00 R/R Spike set for R/W Mon.

25+00 R/R Spike set for R/W Mon.

22+37.39 $\frac{5}{8}$ " iron pin fd angle $0^{\circ}12'$ Rt.

20+00 R/R Spk. set for R/W Mon

15+00 R/R Spk. set for R/W Mon.

6/27/24

CR 12

Frank Armstrong

~~31+1/2 x R~~

Tavis
Cummings
Kraucher

26

Bessie Cronkleton

24+78
58.0

2 Sty.
Frm.

Corn
Crib

23+18
23.0

23+08.5
79.1

Barn

~~4. Twp Rd 127~~

Sta 22+37.39

Walter P. Polk

Glady's M. Tanner

N 72 5/8 W

N 16 1/2 W

67+22
134'-11 1/2'

60+00 R/R Spk. set for R/W Mon.

55+42.2 1" iron pin fd. 3.15' Rt of &

55+00 R/R Spk. set for R/W Mon. (Rt. only)

52+71.5 15" C.M.P.

52+70.35 1/2" iron bar fd. 2.0' Rt of &

50+00 R/R Spk. set for R/W Mon

45+51.4 1" iron bar fd 1.6' Rt. of &

45+00 R/R Spk. set for R/W Mon. (Rt. only)

40+00 R/R Spike set for R/W Mon's.

35+00 R/R Spk. set for R/W Mon's.

34+89 16" C.I.P.

L/23/64

Tavis
Cummins
Hauchar

27

~~R 55+42.2 Springfield Girl
Scouts Inc.~~

CD 12

1 stn.
From

3.15'

55+06
100'

Ella C. Webber

Mary J. Abbott

12.4 15.8

20'

52+70.35

~~R 45+51.4~~

1.6'

Mary L. Smith

Frank Armstrong

38+32

16 19

80+00 R/R Spike set for R/W Mon.

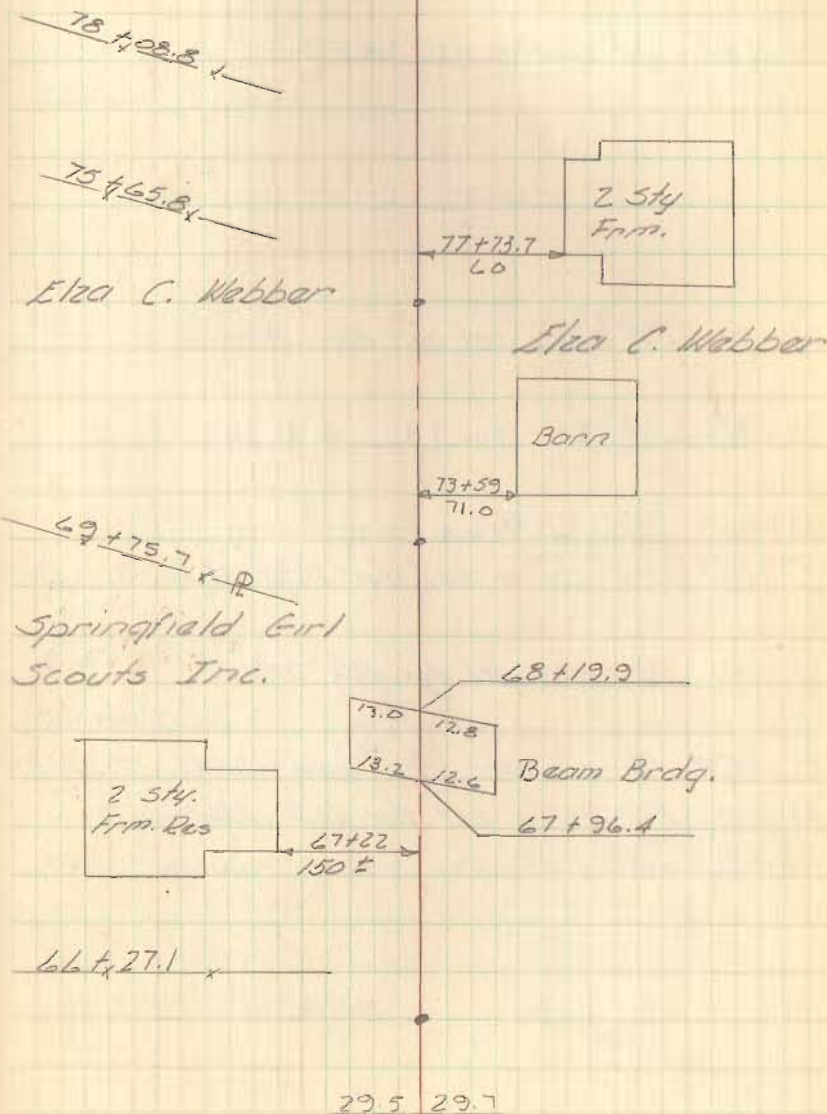
75+00 R/R Spike set for R/W Mon

70+00 R/R Spike set for R/W Mon.

65+00 R/R Spike set for R/W Mon (1st only)

62+34.7 6" Conc. pipe

CR 12 28



100

98+24.8 24" CIP

95+00 RR Spike set for R/W Mon.

92+53.2 1/2" Iron pin Fd 0.4' Lt

91+41.2 36" C.I.P.

90+00 R/R Spike set for R/W Mon

87+00 RR Spike set for R/W Mon.

85+84.4 Stone under steel cover = 5847 0°-28' Lt

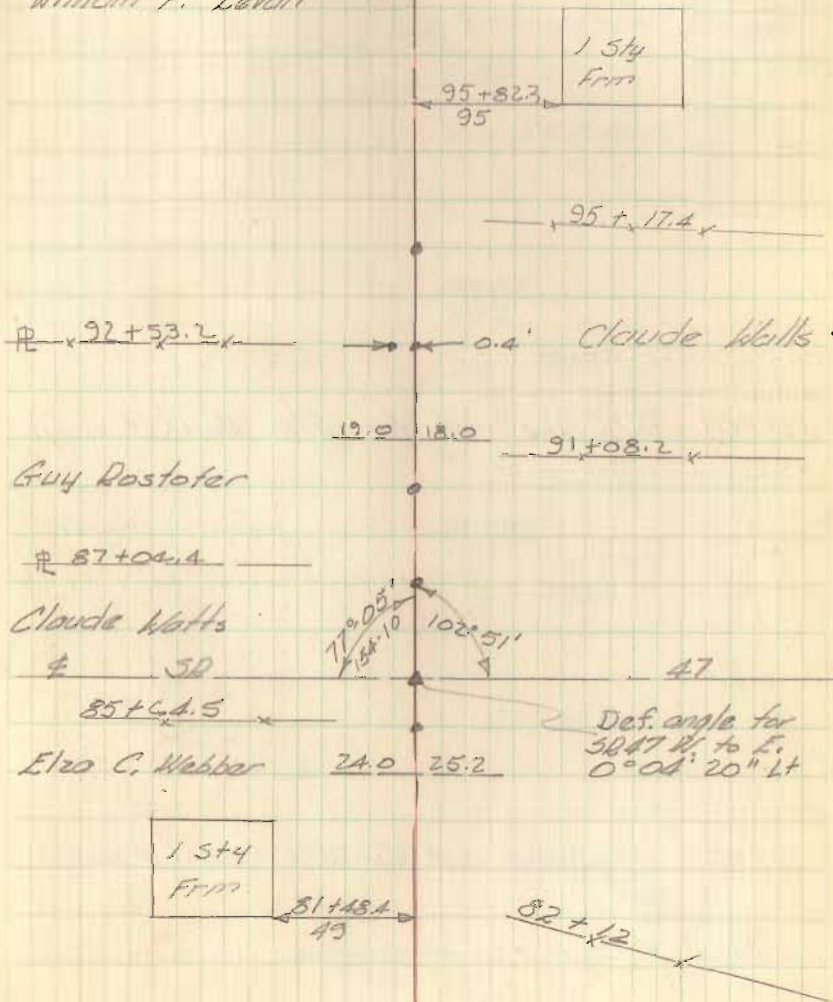
85+00 R/R Spike set for R/W Mon

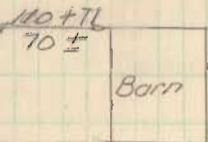
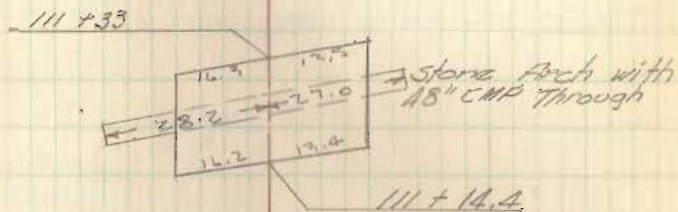
84+27.6 12" CMP

CR 12

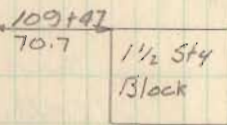
29

William F. Loran





Marshall Dugh



L.R. McKeever

~~105 + 17.8~~~~105 + 17.8~~

$$\frac{320}{320}$$

110 + 00 RR Spike set for R/W Mon (Lt only)

11
105 + 00 RR Spike set for R/W Mon. (Lt only)

103 + 10 8.3' x 11.3 Arch Pipe

125+00 RR Spike set for R/W Mon.

120+00 RR Spike set for R/W Mon.

119+30.7 12" C.I.P.

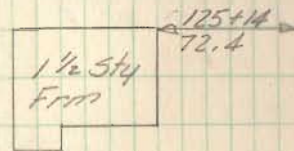
116+34 16" C.I.P.

115+08.2 1" iron pin 0.95 Lt. of \pm

115+00 RR Spike set for R/W Mon.

CR 12

31



1 story
Block

121+96
91'

121+43.35

PK

Dorothy Larson.

Edith Vance

76.9

119+76.5

PK set

21.8 17.0

Floyd McKeever

117+30 x R

Wm L. Grow

16.6 19.7

0.95

112+55
125'

1 1/2 story
Frame

McKeever

155+00 RR Spike set for R/W Mon

150+26.85 RR Spike found on E

150+00 RR Spike set for R/W Mon

146+38.7 1" IR fd 0.25' Rt of E

145+00 RR Spike set for R/W Mon. (Lt only)

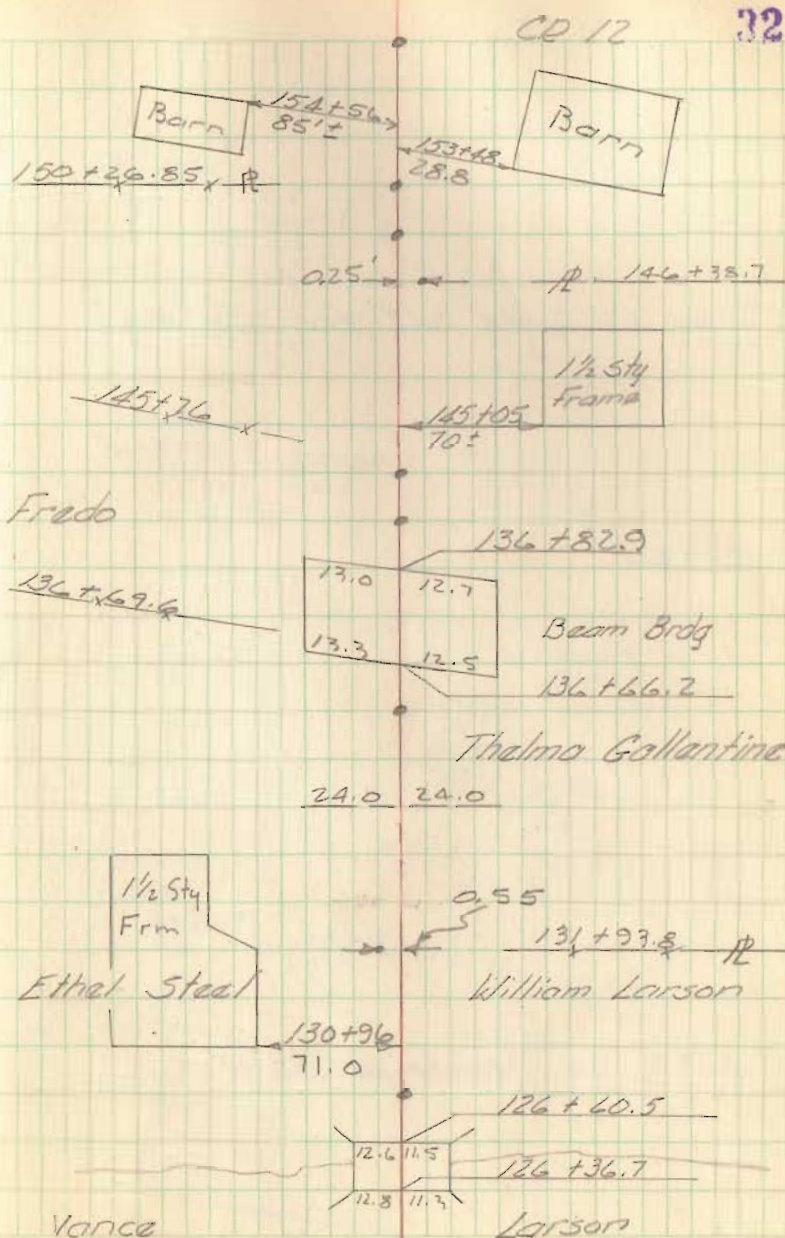
140+00 RR Spike set for R/W Mon

135+00 RR Spike set for R/W Mon.

133+41 16" C.M.D

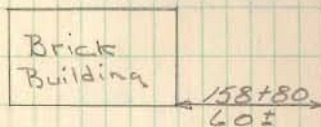
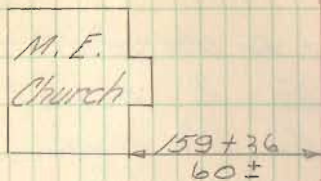
131+93.8 1" Iron pin .55" Lt of E ↘

130+00 RR Spike set for R/W Mon

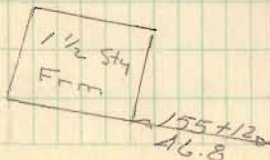
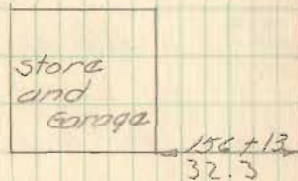
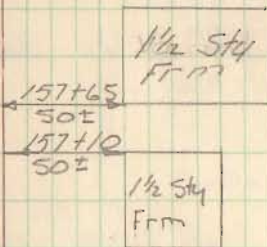


159+00 RR Spike set for R/W Mark

155+79.4 RR Spike fd. .85' Lt of ϕ



158+15



195+00 RR Spike set for DW Mori

190+00 RR Spike set for DW Mori

185+93.85 Iron Pin Fd. R 0.27 Rt

185+00 RR Spike set for DW Mori.

183+30.9 Iron Pin fd 0.1' Lt

180+00 RR Spike set for DW Mori.

175+00 RR Spike set for DW Mori

170+00 RR Spike set for DW Mori

165+00 RR Spike set for DW Mori

161+00 RR Spike set for DW Mori.

160+21.67 Iron pipe No Pin/gle

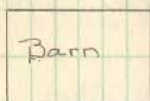
34

CD 12

194+88.3

192+62.5

0.27



0.1 183+30.9

150+80
150±

1 Sty
Frm

178+28
60

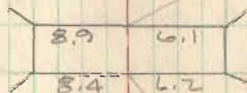
178+99
125

Barn

177+9A
75

2 Sty
Frm
Bas

174+17.6



Bridge

173+68.0

167+66

1 Sty
Frm

162+59
50±

160+21.67

CD 26
160+21.67

235+00 RR Spike set for R/W Mon.

230+00 RR Spike set for R/W Mon

228+06.80 $\frac{1}{2}$ " iron pin fd Def $0^{\circ}05' R$

225+00 RR Spike set for R/W Mon

220+00 RR Spike set for R/W Mon

215+00 RR Spike set for R/W Mon

210+00 RR Spike set for R/W Mon

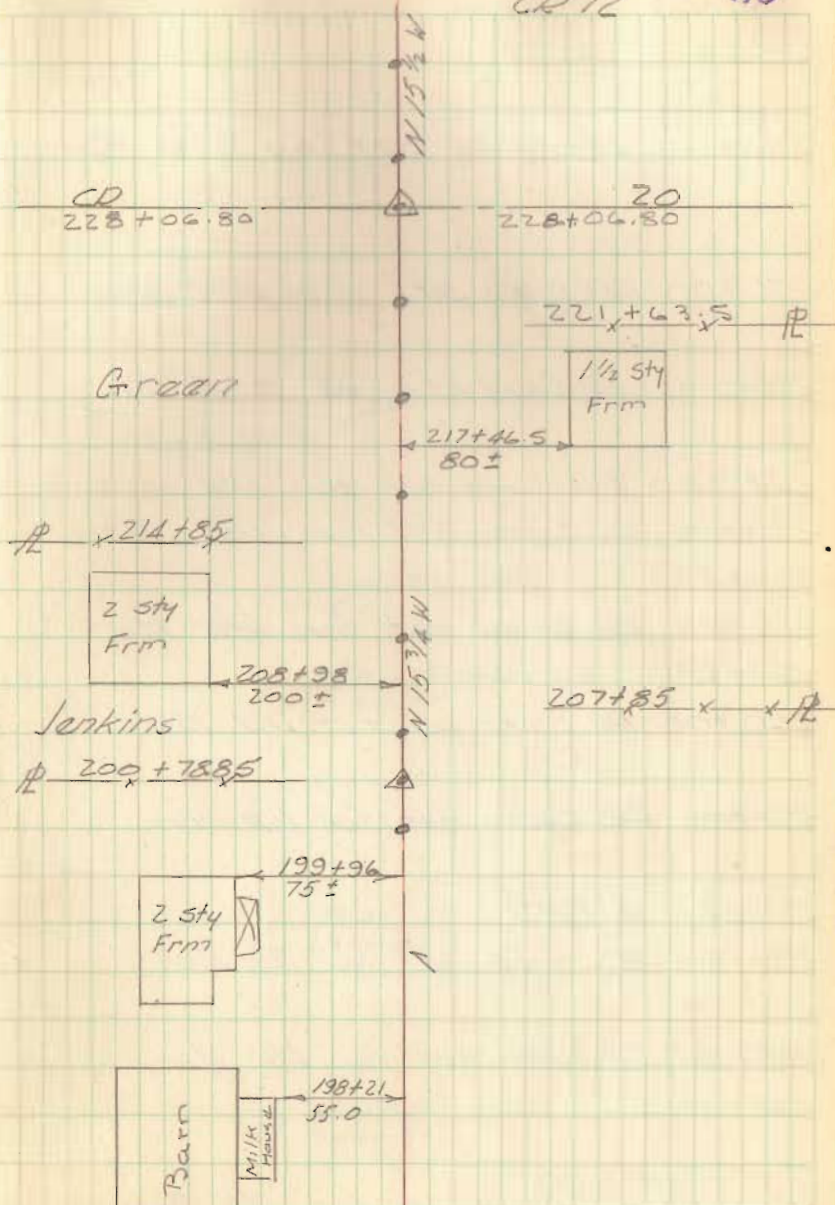
205+00 RR Spike set for R/W Mon

200+78.85 1" # pin set Def. angle $0^{\circ}22' L$

200+00 RR Spike set for R/W Mon

CR 12

35



285+00 RR Spike set for D/W Mon

280+00 RR Spike set for D/W Mon

276+00 RR Spike set for D/W Mon

274+91.85 RR Spike fd - Def. 0°-14' Rt.

274+00 RR Spike set for D/W Mon

270+00 RR Spike set for D/W Mon

266+35.9 12" CIP

265+00 RR Spike set for D/W Mon

264+78.4 24" CIP

260+00 RR Spike set for D/W Mon.

255+00 RR Spike set for D/W Mon.

251+82.1 15" CMD

250+00 RR Spike set for D/W Mon

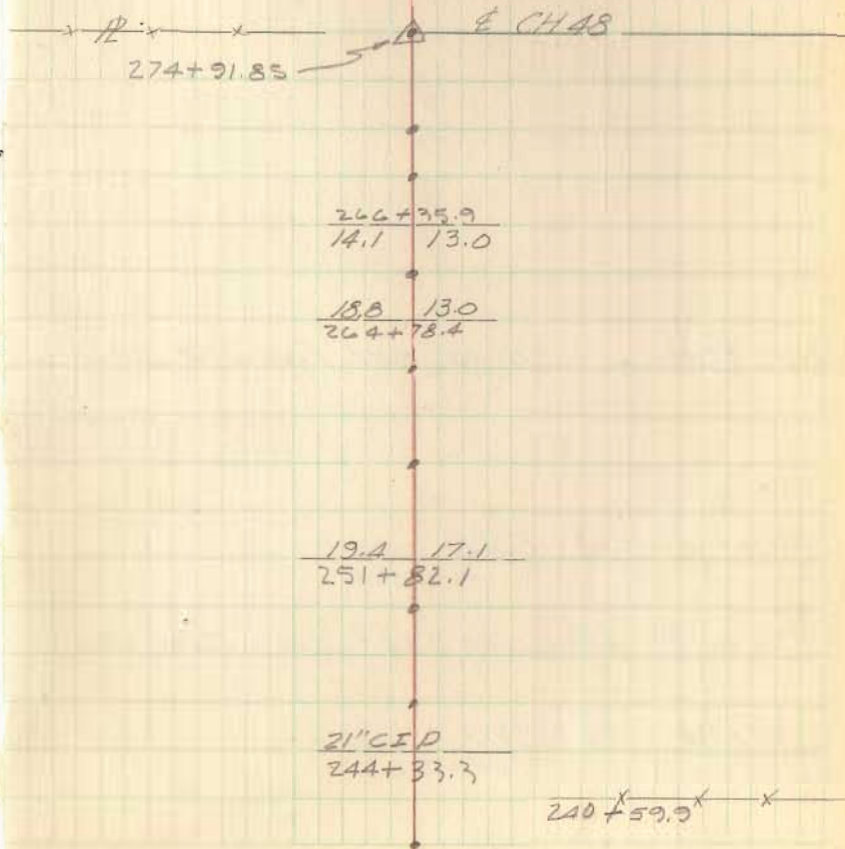
245+00 RR Spike set for D/W Mon

244+33.3

240+00 RR Spike set for D/W Mon.

CR12

36



294+11.85 Iron Pin fd

293+00 RD Spike set for R/W Mon

290+14 15" CMP

290+00 RD Spike set for R/W Mon

285+94 24" CMP

CH 50 ^{sto} 294+11.85

N 15' 14" W

18.0 16.0
290+14

18.1 17.7
285+94

Survey of CR48
~~Dushereek~~ Twp Bakescreek
 SR292 To CR142

12+66.40 7" I.P. Found 11' 0.7' E of 4

0+00 CR48 = 291+11 SR292

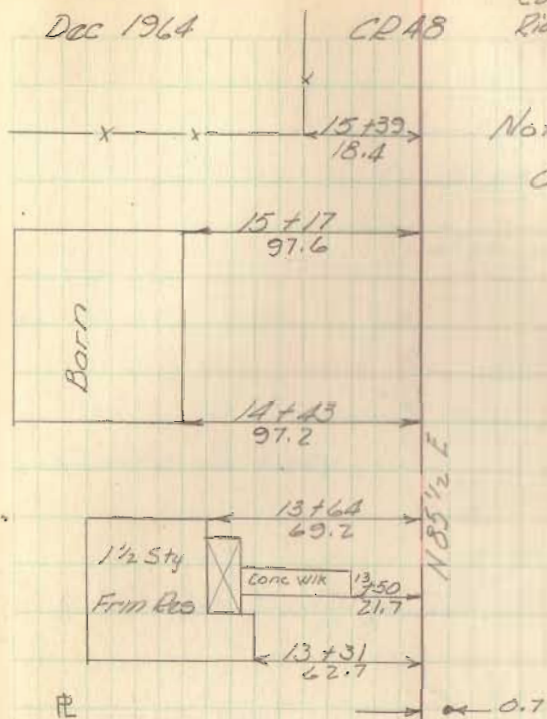
Dec 1964

CR48

Gaslin
 Cole
 Ricketts

39

Note: Rk. Nails on
 all stations

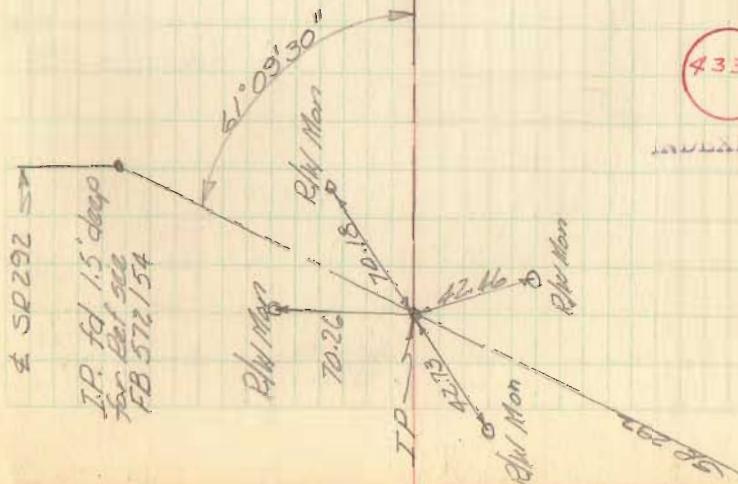


Mayme L. Lindamood

Harry C. Dugan

4330

INDEXED ON M



68

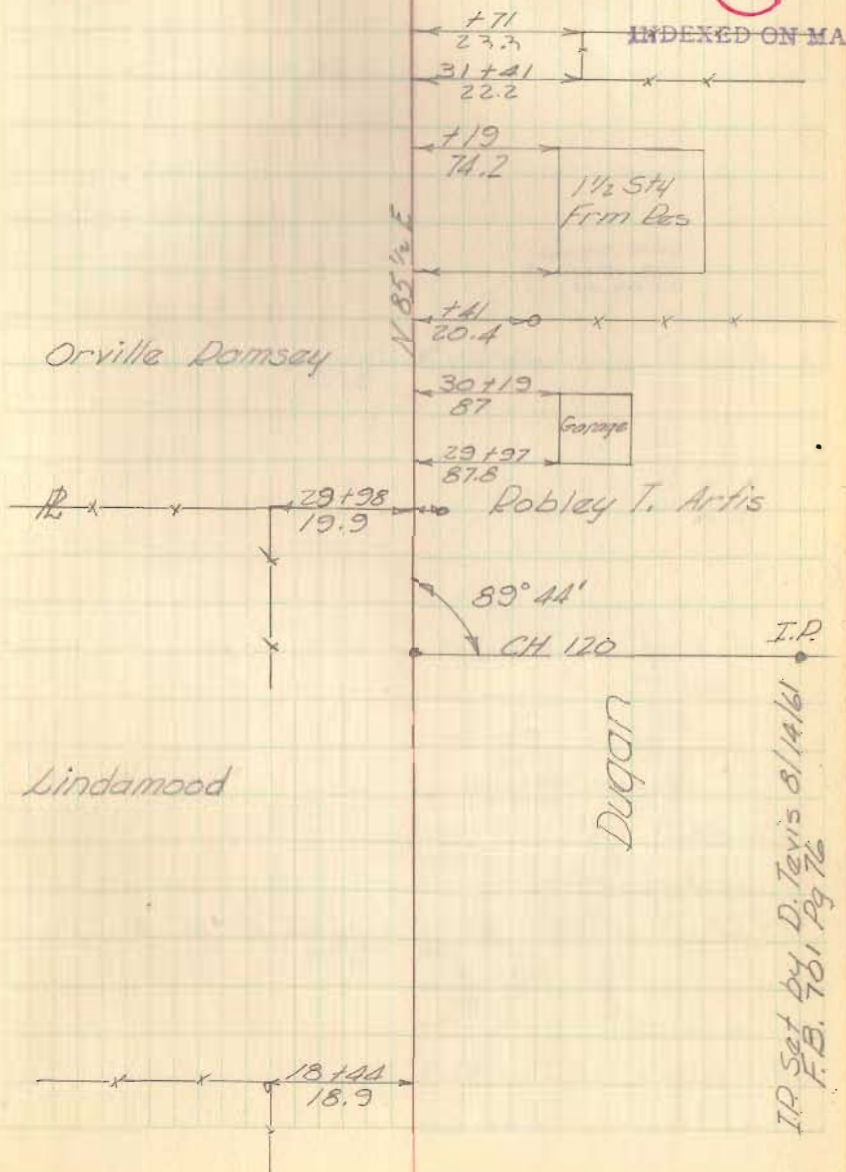
29 + 99.25 1" iron pin fd 0.25' pt of 4

27 + 57.30 1/2" iron pin found over stone
(1.5' deep No Angle)

Dec 1964

Las Gaslin
Roger Coltz
CH 48 Carl Ricketts 39

4330

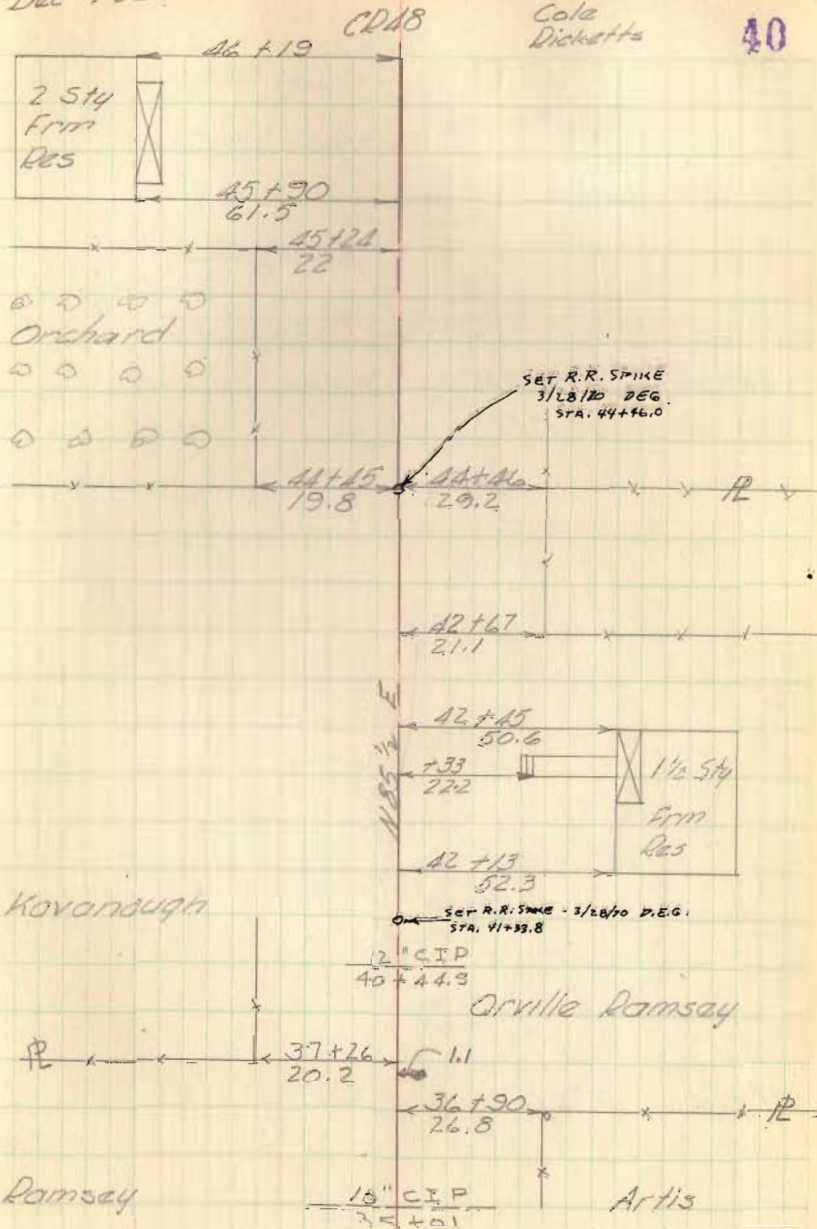


IR Set by D. Tevis 8/14/61
F.B. 761 Pg 76

Dec 1964

Geaslin
Cole
Dickette

40



40+44.5 12" CIP

37+24.15 1" iron pin fd 1.1' Pt of E

35+01 10" C.I.P.

03

RR R/W Fence

Pluses taken to the inside of ea rail

RR R/W Fence

54+54 10" CIP

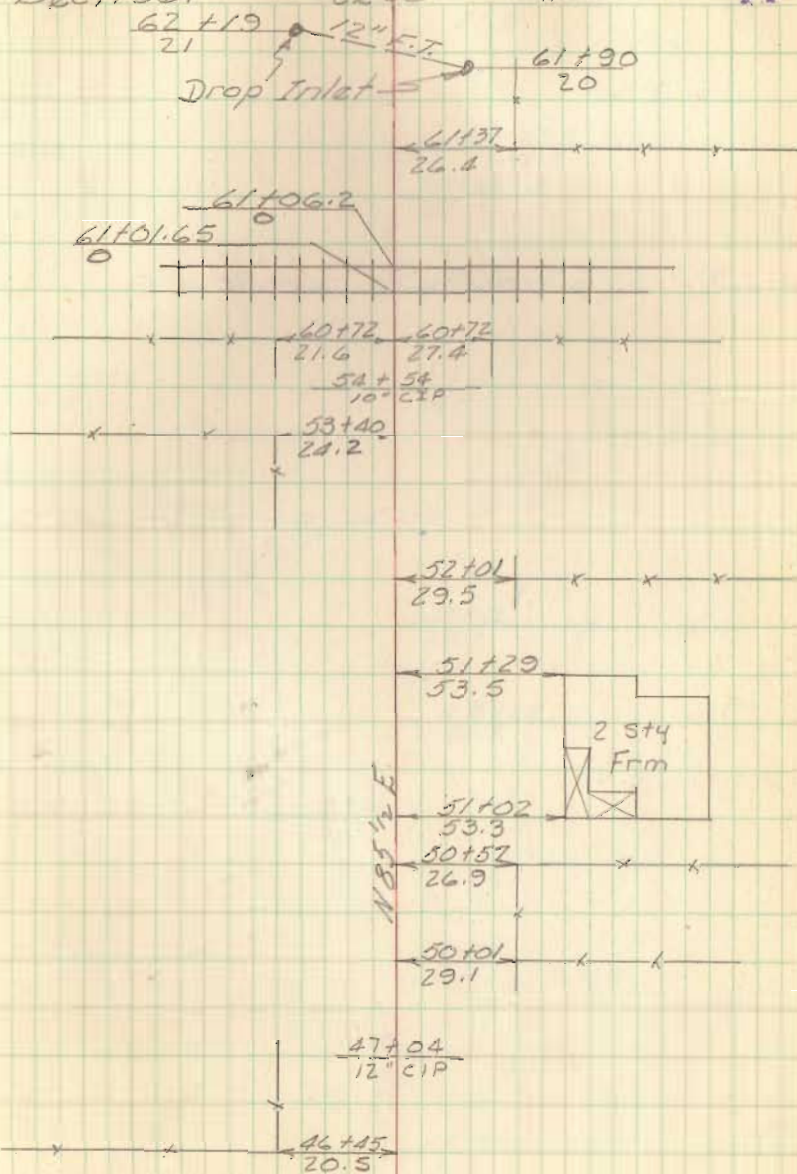
47+04 12" CIP

Dec. 1964

CR 18

Gardner
Cole
Dicketts

41



70

74+92.2 1" Iron Pin fd 1.1' Pt. of E

71

Dec. 1964

CR48, 76+70

Gaaslin
Cola
Dicketts 42

41.8

Hog
House

76+12.5
10.7

75+85
24.7

71+33
24.9

12" Diser 71+33 20.5 24' CMP

71+26
17.1

71+31.5
17.8

68+63
25.1

68+28
51.8

1 1/2 Sty
Fritz

68+16
25.3

68+07
51.8

67+38
25.2

34.9

Garage

67+19.5
20.1

66+26
25

185 1/2 E

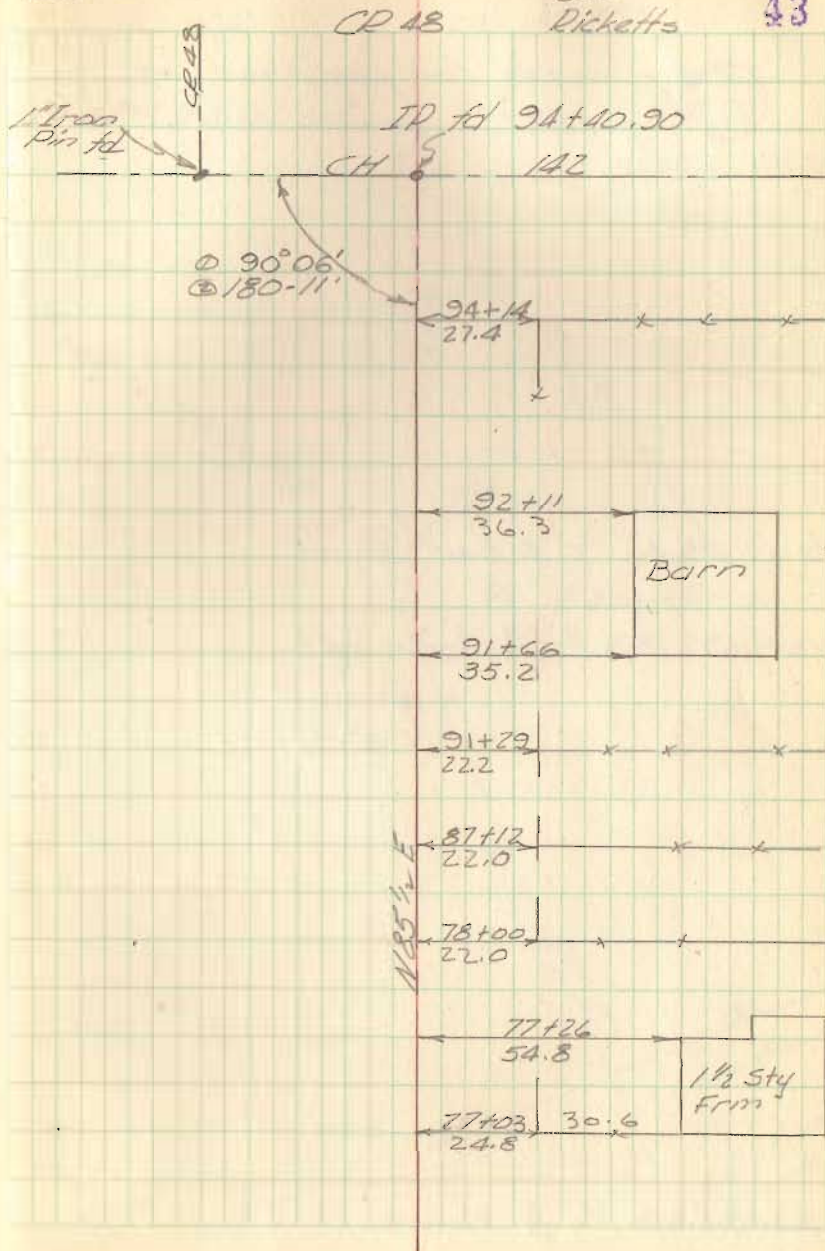
End this survey.

94+40.90 1 1/2" Iron Pin found

Dec. 1964

Geeslin
Cola
Ricketts

43



Survey made for purpose of
staking alk

110+05.46 $\frac{1}{2}$ " ϕ bar Found

109+72.83 $\frac{1}{2}$ " ϕ bar set

83+84.73 $\frac{1}{2}$ " ϕ Found

Dec - 1964

CR

271

Geaslin
Cole
Dicketts

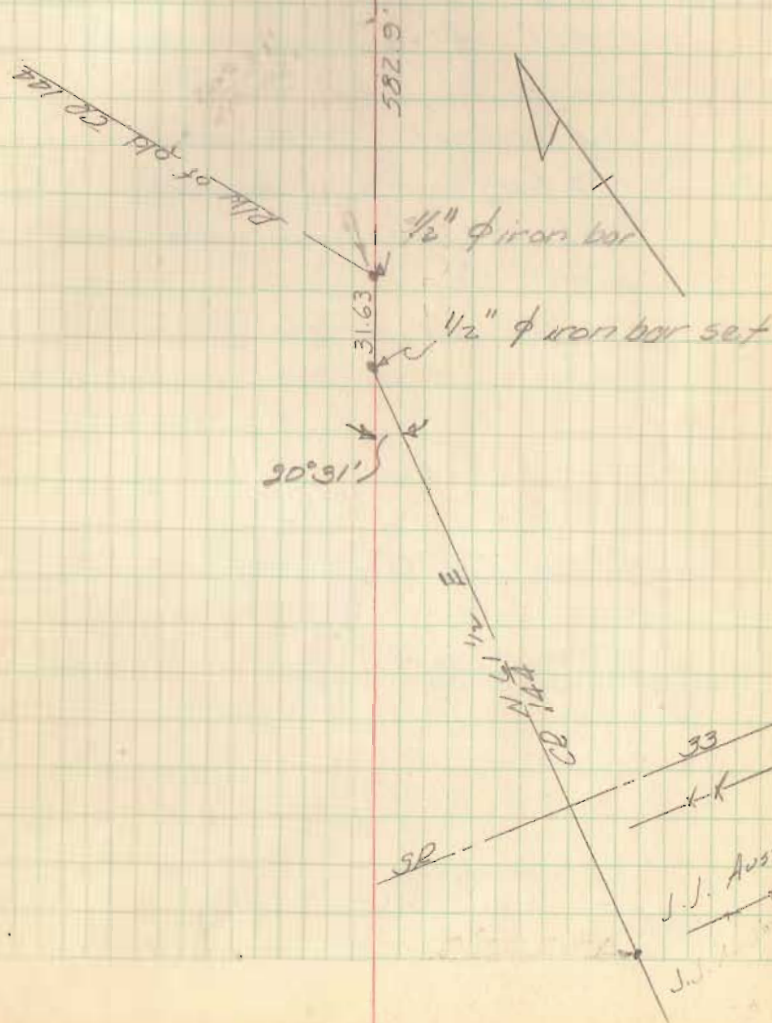
44

RR Spike set

4331

INDEXED ON MAP

Perry Trip



LINE NOTES FOR TR 216

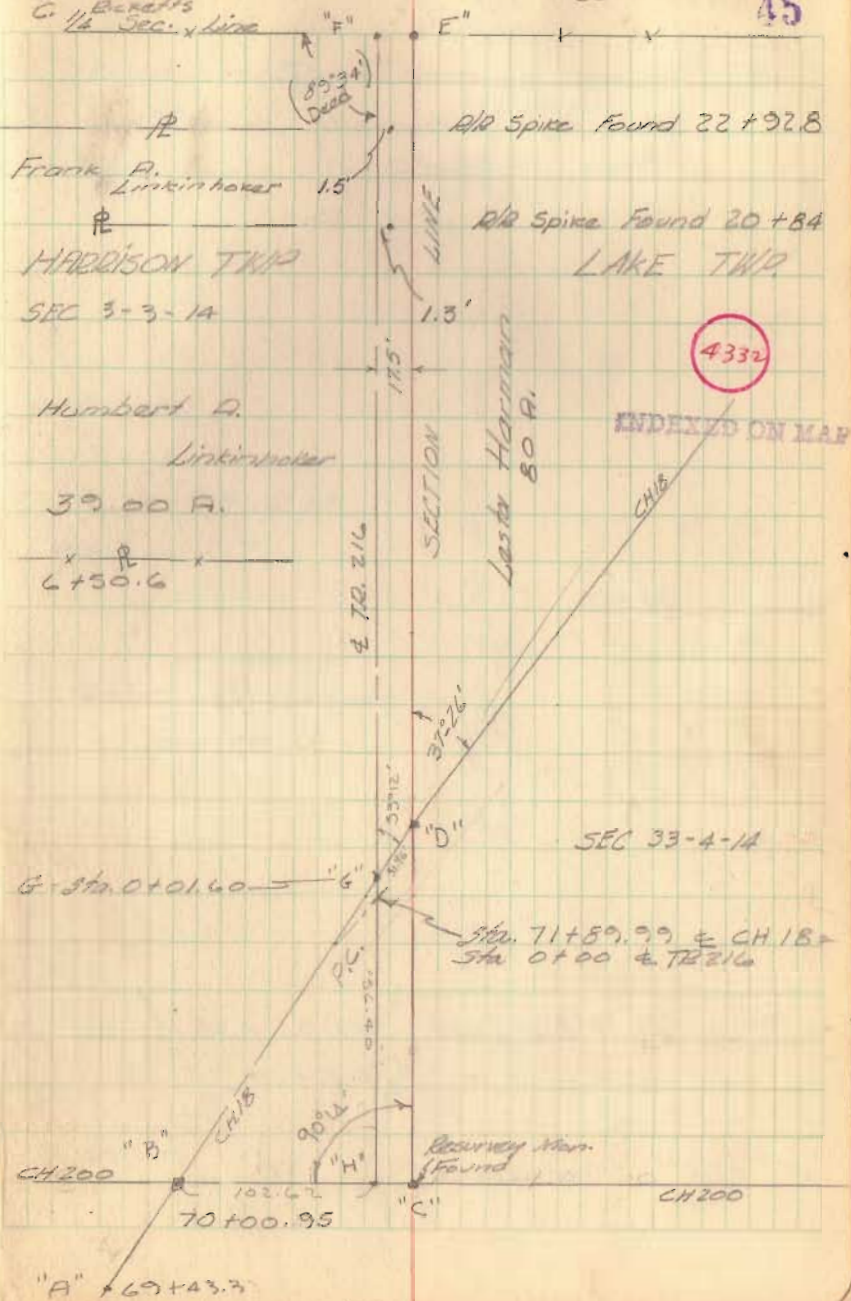
- A = Iron Found Sta. 69+43.3 (CH 18 Sta)
- B = 1" Iron bar Found Sta 70+00.95 (CH 18 Sta)
- C = Resurvey Monument Found
- D = 1" Iron bar fd. (bent over, replaced with 1" ϕ bar) Sta. 72+20.32 CH 18
- E = Resurvey Monument Found
- F = 1" ϕ bar set Sta 25+02.49
- G = 1" ϕ bar set at intersection of back torn. CH 18 and Sta. 0+01.52 $\&$ TR 216
- H = P.K. Nail set at the intersection of CH 200 and projection of TR 216 $\&$ South.

L. Gaestlin
B. Cole \times
C. $\frac{1}{4}$ Sec. \times Line

4-15-65

65°

45



Line Notes
Twp. Rd 216

Lake & Harrison Twp.

J
Resurvey Monument found
Sta. 51+58.30

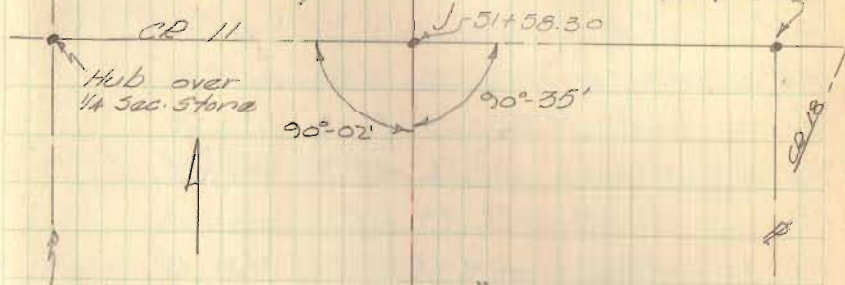
"G" 1" ϕ bar set Sta. 26+35.15

"E" & "F" See pg. 45

L. Geeslin 4-15-65
D. Cole π 15° 46
C. Ricketts

Sec. 4 T. 3 R. 14
Harrison Twp

$\frac{3}{4}$ " ϕ Bar



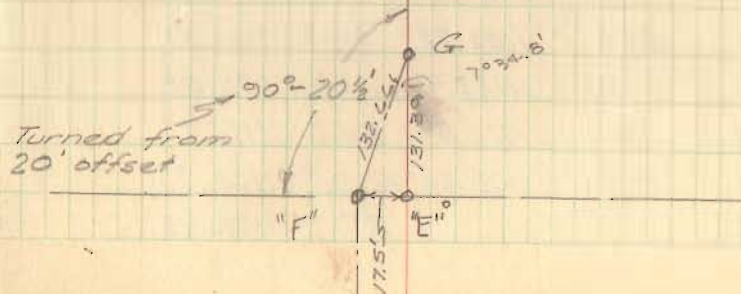
$\frac{1}{4}$ Sec. Line

Sec. 3 T. 3 R. 14
Harrison Twp.

Maud D. Coover
104.75 A.

For Prop. Line Info. see
Pages 52-56

Sec 33 T. 4 R. 14



TWP RD #216 LAKE + HARRISON
SEC 3 + 33 BM's

March 18, 1965
L. Greenleaf
B. Cole

47

Description

Sta	B.S.	H.I.	F.S.	Elev.
BM	3.18	1160.60		1157.42
BM 1	5.80	1164.86	1.54	1159.06
T/P 1	4.37	1160.05	9.18	1155.68
BM 2	7.66	1162.01	5.70	1154.35
T/P 2	12.89	1172.89	2.01	1160.00
BM 3	8.76	1179.91	1.74	1171.15
T/P 3	7.11	1186.26	0.76	1179.15
BM 4	8.87	1189.19	5.94	1180.32
T/P 4	2.74	1190.68	1.25	1187.94
BM 5	1.56	1184.64	7.60	1183.08
T/P 5	5.19	1182.91	6.92	1177.72
BM 6	1.02	1181.53	2.40	1180.51
BM 7			0.05	1181.48
	Check Levels		4/7/65	^{L.G. #} R.C. π cr. φ
BM 7	0.44	1181.92		1181.48
BM 6	2.11	1182.62	1.41	1180.51
T/P 5	6.91	1184.62	4.91	1177.71
BM 5	8.85	1191.92	1.55	1183.37
T/P	2.36	1183.96	10.32	1181.60
BM 4	4.41	1184.72	3.45	1180.31
T/P	1.70	1179.78	6.64	1178.08
BM 3	1.63	1172.78	8.63	1171.15
T/P	2.51	1163.24	12.05	1160.73
BM 2			8.92	1154.32

chisled + on SE Cor of Brdg

RR Spike in roof of 20" Hickory 4+68-22' Rt.

RR spike in Brace Post 6+50.5-30' Lt

RR Spike in ♂ 20+26-20' Lt.

RR Spike in ♂

RR Spike in ♂ 38+04-17 1/2' Lt.

RR Spike in ♂ 46+91.5-16' Lt.

RR Spike in ♂ 51+09.5-14 1/2' Rt.

TWP. RD 216 LAKE & HARRISON

BM's Continued 4/7/65

Sta.	B.S.	H.I.	F.S.	Elev.
BM 2	5.20	1159.52		1154.32
T/p	7.06	1163.51	3.07	1156.45
BM 1	1.23	1160.26	4.48	1159.03
BM			2.86	1157.40

Profile & X-sections

BM	1157.42
0	1158.34
	1157.42
1	1155.91
1 + 29 ²	can. brdg. on skew 1155.87
2	1155.69
3	1154.32
3 + 50	1154.50
4	1155.22
5	1159.38
+ 36	1159.94
+ 42	1161.00
+ 60	1161.33
+ 81	1161.20
6	1160.74
7	1157.84
8	1155.66
+ 96 ²	Pipe on skew 1155.25
T/p 9	1155.25
10	1155.53
11	1155.81

L. Goodlin ✕
D. Cole ✕
C. Riccetto ✕

48

4/7/65

chisled + on SE. Cor. Bridge 1157.42

					EP		EP						
47	12.7	12.7	11.5	11.5	6.5	0	6.9	8.6	12.0	12.0	13.8	13.8	
0.5	50.4	6.45	6.45	5.7	5.67	35.87	5.76	5.8	5.6	6.38	6.38	50.5	
												50	
												50.4	
					EP		EP						
	48	30	20	14	10.5	8.2	0	5.2	8	14	30	50	
	52.1	2.0	2.1	3.4	4.0	3.975	4.32	4.15	3.9	2.4	2.2	2.1	

						EP						
+ 42	50	32	19	9	0	6	9	21	50			
	68.7	68.0	60.5	60.8	61.06	60.9	61.7	68.7	68.7			

		F	F/L	T/p	EP		EP	EP	F/L				
50	33	20	18.5	18.5	14	9.6	0	5.3	8	13.5	13.5	26	30
3.0	3.4	2.6	3.11	4.42	4.7	4.86	5.16	4.7	4.82	3.82	4.5	4.7	4.9

TWP RD 216 Lake & Harrison
 Profile & x-sec's Continued 4/14/65

Sta.	Elev
12	1156.23
BM 2	1154.34
13	1157.28
14	1157.20
+30	1157.37
+65	1158.12
15	1159.59
+25	1160.71
+50	1160.94
16	1160.03
+50	1159.65
17	1160.15
+50	1161.06
TP 18	1162.81
+50	1164.31
19	1167.80
+50	1169.66
20	1171.14
BM 3	1171.14
+50	1172 1182.86
21	1175.35
+32	1176.34
+64	1176.51
22	1176.19

4/14/65

L. Geeslin JK
 B. Cole
 C. Ricketts

19

Elev 1154.35

F		EP		EP									
50	30	15	13	10	8.6	0	5.8	10	14	16	18	21	30
54.5	4.8	5.2	5.4	6.4	6.67		57.13	2.8	6.2	5.7	5.7	6.0	56.2
													50
													56.4

Elev 1171.15

F		EP		EP									
50	30	15	12	8	6.5	0	8.9	15	20	30	50		
5.9	5.9	5.9	6.5	5.3	7.524		5.30	5.4	7.8	6.9	6.6		

TWP. RD. 216 Lake & Harrison
Profile in X-500's continued

Sta	Elev
22+85	1175.38
23	1175.39
24	1176.02
^{TP} 25	1178.21
+54	1180.10
26	1180.43
27	1181.91
+62	1183.22
28	1182.62
29	1180.48
^{TP} 30	1180.03
31	1180.48
32	1182.39
33	1183.98
^{TP} 34	1186.15
35	1189.43
36	1187.08
37	1185.20
38	1182.7
BM 5	1183.08
39	1180.2
40	1179.7
41	1180.0
42	1178.8

5/14/63
L. Gosselin X 4
D. Cola X
C. Diletto X

4/14/63

		F	EP	EP								
50	33	18	16	13.3	0	2.5	8	11	14	21	32	50
82.0	1.9	82.2	1.6	1.7		1.92	1.9	80.6	0.9	1.6	1.6	81.8

		F	EP	EP									
50	30	18	14	12	9.4	0	7.1	10	13	16	21	34	50
4.2	84.0	3.8	2.0	2.3	82.32		2.20	1.8	80.6	0.5	0.9	0.0	80.1

		F	EP	EP						
50	30	18	15	13	12	9.0	0	5.3	30	30
3.8	4.1	84.6	4.2	4.2	4.8	4.88		81.8	5.0	82.9

TWP. RD 216 Lake & Harrison

Profile & X-sec's continued

Sta	Elev.
43	1177.7
44	1178.67
45	1178.07
46	1179.73
47	1180.71
BM	1180.51
48	1177.69
49	1176.00
50	1176.89
51	1179.81
+49	1183.69
+58.3	1183.91
BM	1181.45

L. Goslin ATK

R. Cole \$

C. Dickette \$

51

4/14/65 80.31

		F					EP		EP		F				
50	30	19	15	12	10.1	0	3.4	10	11	13	18	30	50		
74.8	51	5.8	6.2	7.1	7.22	7.27	7.57	7.4	7.1	7.0	7.76	8.0	78.5		

Elev 1180.51

		EP					EP		F				
50	30	18	14	10	8.4	0	4.4	7	11	17	30	50	
74.0	79.5	73.2	3.7	5.6	5.65	76.00	5.9	4.4	4.2	4.1	4.7		

Elev 1181.45

Township Road 216 Harrison & Lake

7100

Topo

6100

5100

4100

3100

2100

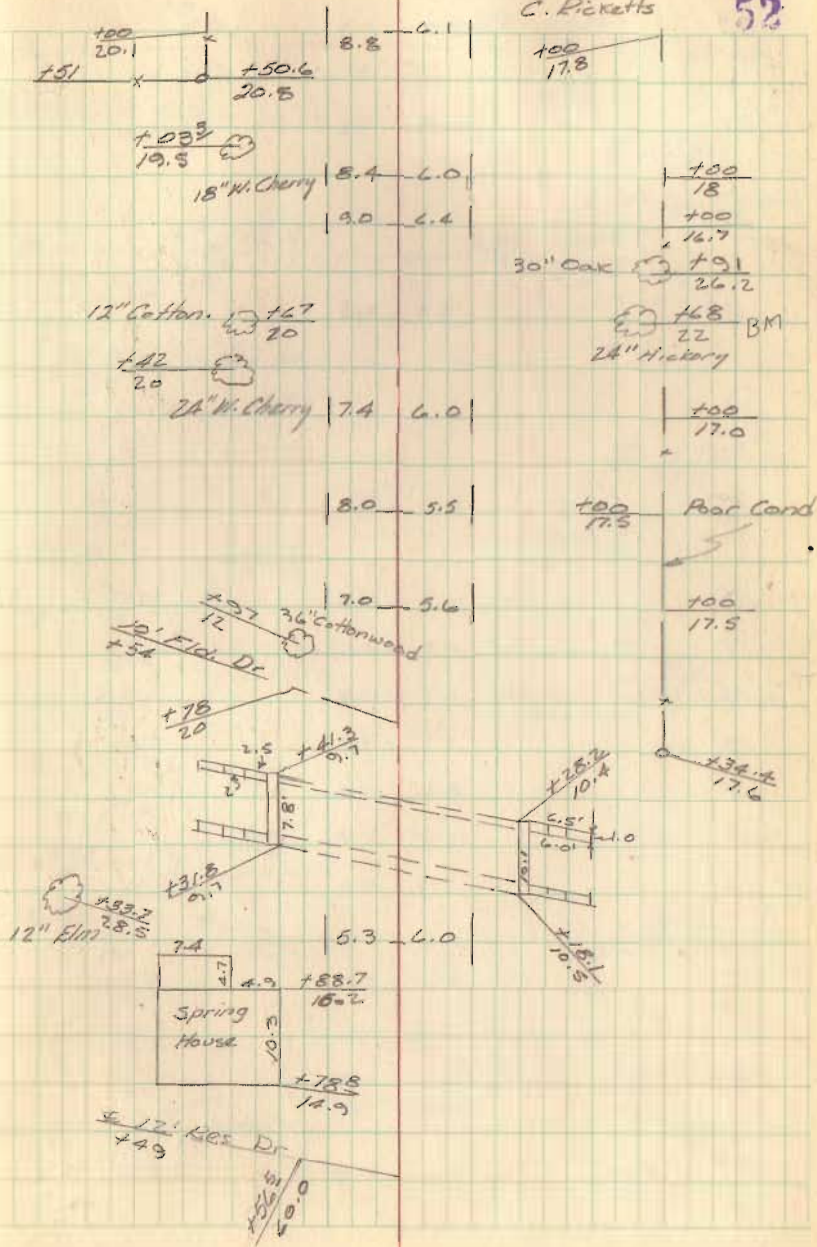
Conc. Box Culvert (Good Condition)

1100

4/19/65 70°

L. Geeslin
R. Cole
C. Ricketts

52



Township Rd. 216 Lake & Harrison
Topo

31

30

29

28

27

+35.15

26

+02.49

25

24

23

1" ϕ bar PI

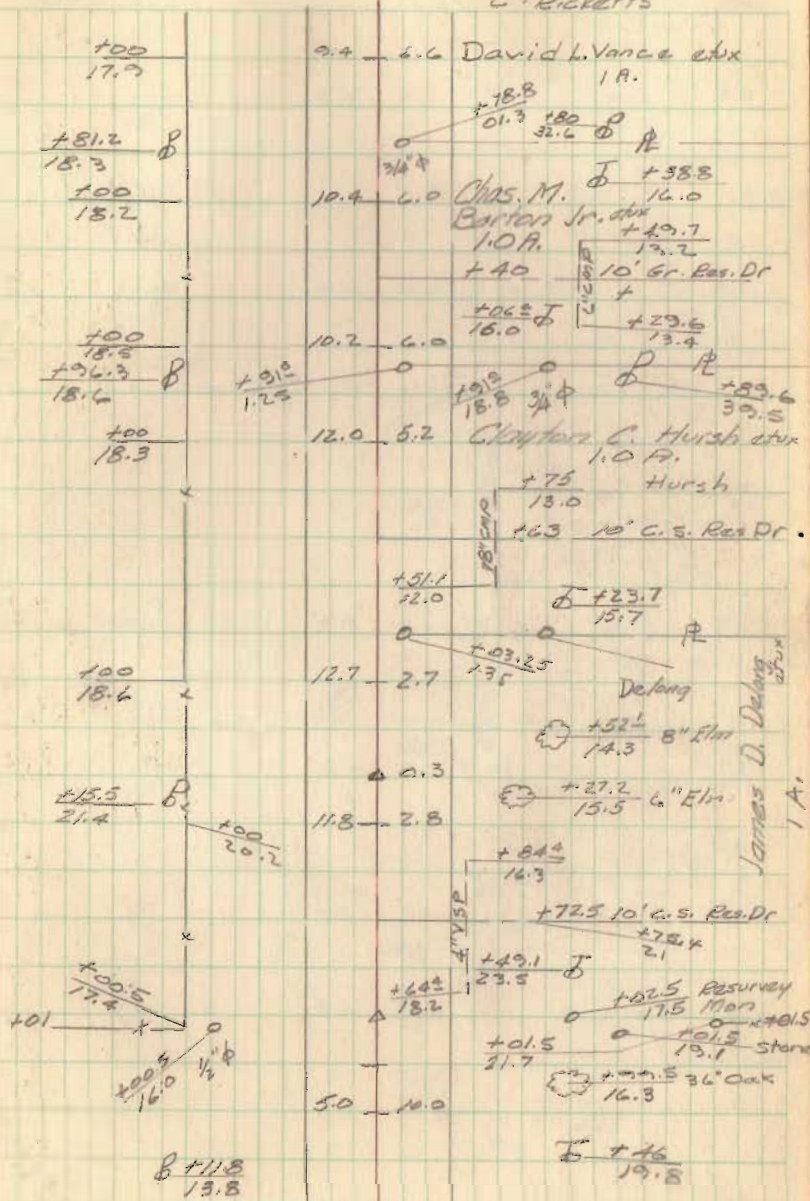
1" # iron bar

4/10/65

Temp. 70°

L. Geeslin #1
R. Cole
C. Ricketts

54



TWP RD. 216 Lake & Harrison

Topo Resurvey Men

458.30

51

50

49

48

47

46

45

44

43

42

41

40

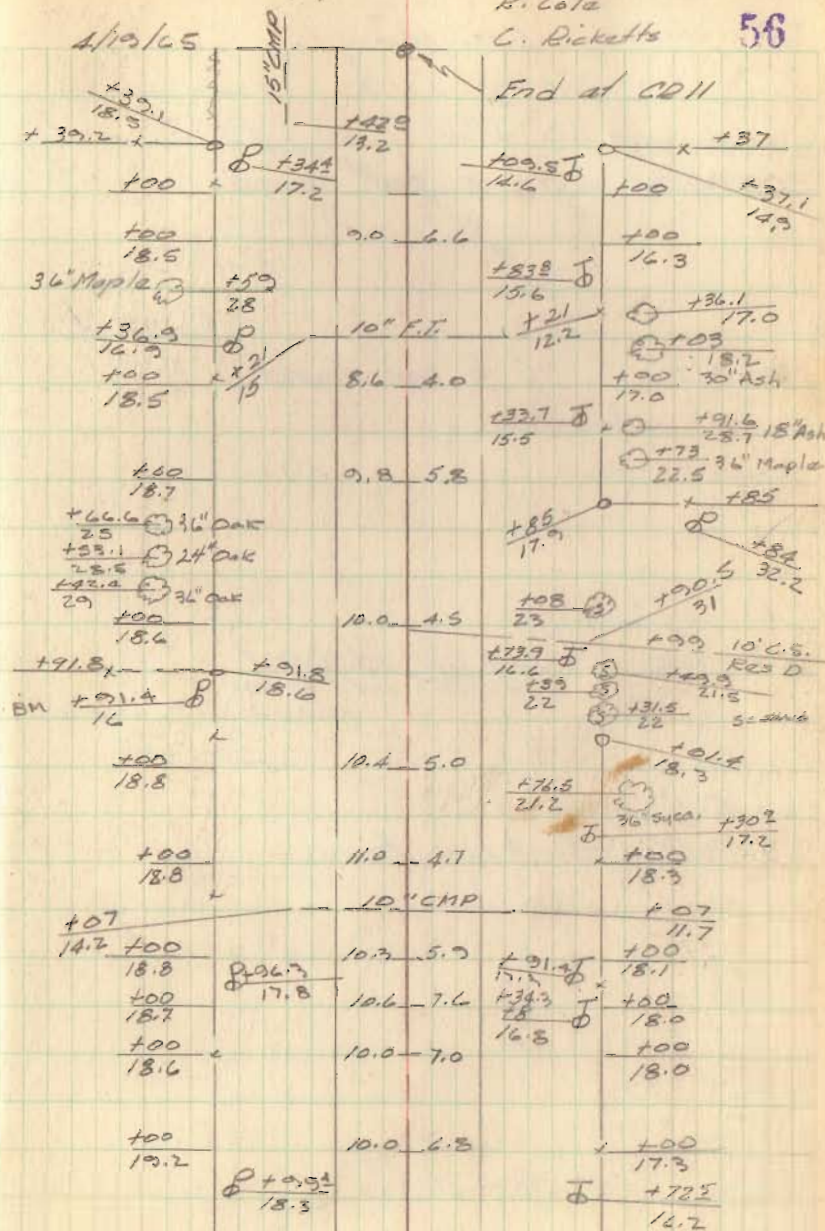
Temp 70°

L. Gesslin &

B. Cola

C. Ricketts

56



C.H. 1AA
Deery Twp
60' R/W

30 + 98.00 1/2" ϕ bar found

25 + 31.80 1/2" ϕ bar found

12 + 79.00 1/2" ϕ bar fd. bent
replaced w/ 1" ϕ bar

7 + 42.45 1/2" ϕ bar found

0 + 100 R/R Spk. Found

4/22/65
70°

L. Gaslin
D. Cole
C. Rickatts

57

4331

INDEXED ON MAP

TWP RD 148

Brick Mail Box
Post

22.08'

34.07'

Ref
(F.B. # 561)

Herbert L. Hafner
49.96 A.

John E. Dunaway
146.6 A

James B. Dawson
21.0 A.

2' Pt.

C.H.

153

C.H. 1AA (cont)

45+57.35 Harrow Teeth Fd
Replaced w/ 1" # bar

37+98.00 1" # bar set

30+98.00

4/23/45

V.M.S. 3164

L. Gosslin
D. Cole
C. Bicketts

58

V.M.S.

V.M.S.
3154

1014 1/2

LINE

Herbert L.
Hefner
1.50 A

~~12+28.4~~

Earl T. Moore et ux
71.54 A.

V.M.S. 4682

V.M.S. 3161

12050 1/2

R x x

Raymond M. Miller
et ux
39.60 A.

J. E. Dunaway
146.6 A.

15000

TR 148

CR 144 (cont)

53+84.73 1/2" ϕ bar found

70+26.30 RR spike set

65+02.20 cutter bar guard fd.
Replaced w/ 1" ϕ bar

48+57.35

4/24/65

L. Gazzlin
R. Cole
L. Ricketts

59

(see Page 44)

0° 05 1/2' Lt

John J. Ruspin
et ux
9.35 A.

John R. Denura
et ux
124.63 A.

Lester R. Sharp
et ux
38.15 A.

VMS 3164

VMS 3154

ϕ 70+26.30

John R. Denura et ux
69.3 A.

3° 59 1/2' Rt.

ϕ 59+60.6

Herbert L. Hafner
62.30 A.

Paul J. Hall et ux

VMS 4682

VMS 3161

FRANKLINE DRIVE
FIVE PARKS

□ 1" ⌀ Re Bar Set on ♂

Geoslin
Dodson &
Ricketts

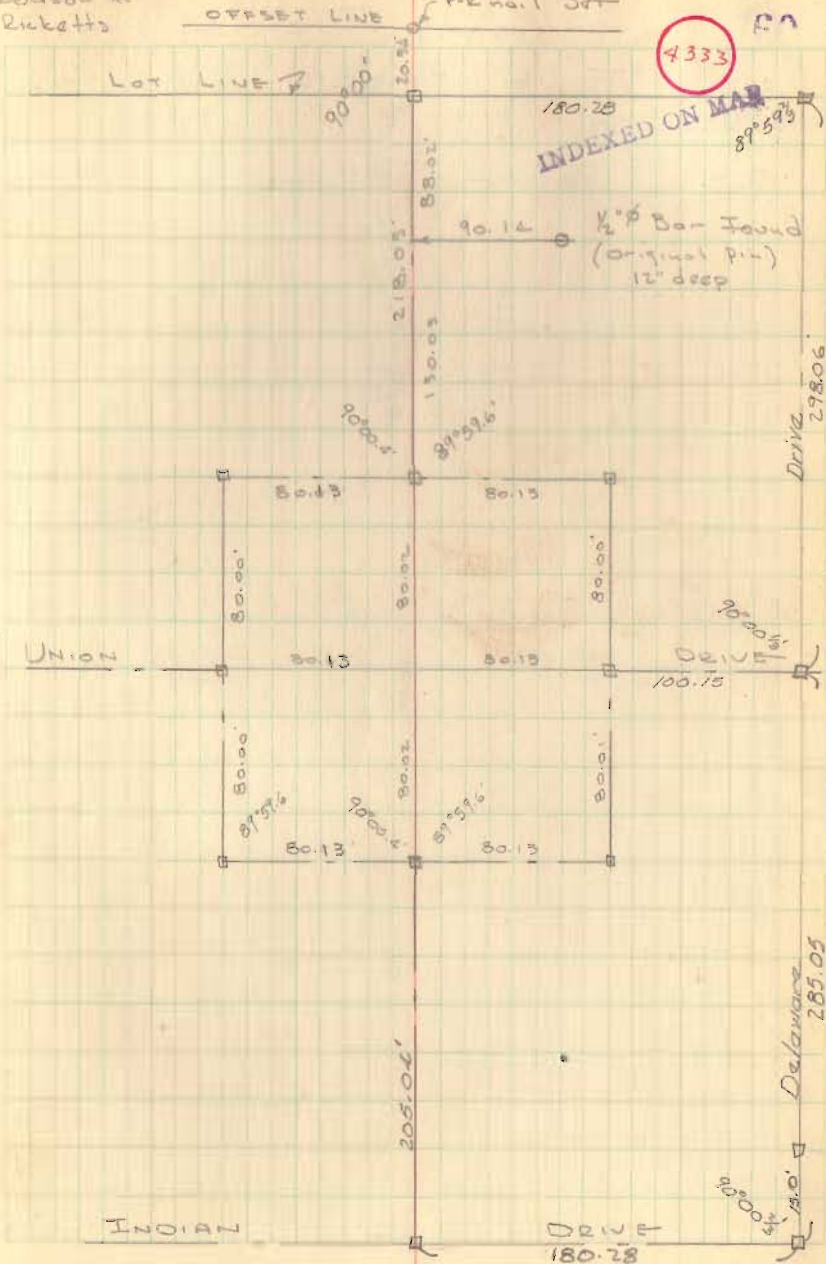
5/29/65

PK nail Set

P.A.

4333

INDEXED ON MAP
SP 593



MIAMI DRIVE

FIVE PARKS

□ = 1" ReBar Set on E

Greer
Dodson
Dicketts

5/29/65

OFFSET LINE

51

LOT LINE 2

90°00'00"
180°00'00"

20.42'

4339

INDEXED ON MAP

296.11'

90°00'

89°59.6'

90°00'00"
180°00'00"

110.11'

DRIVE

100.13'

80.00'

80.00'

285.04'

MIAMI DRIVE

DRIVE

9/25/65

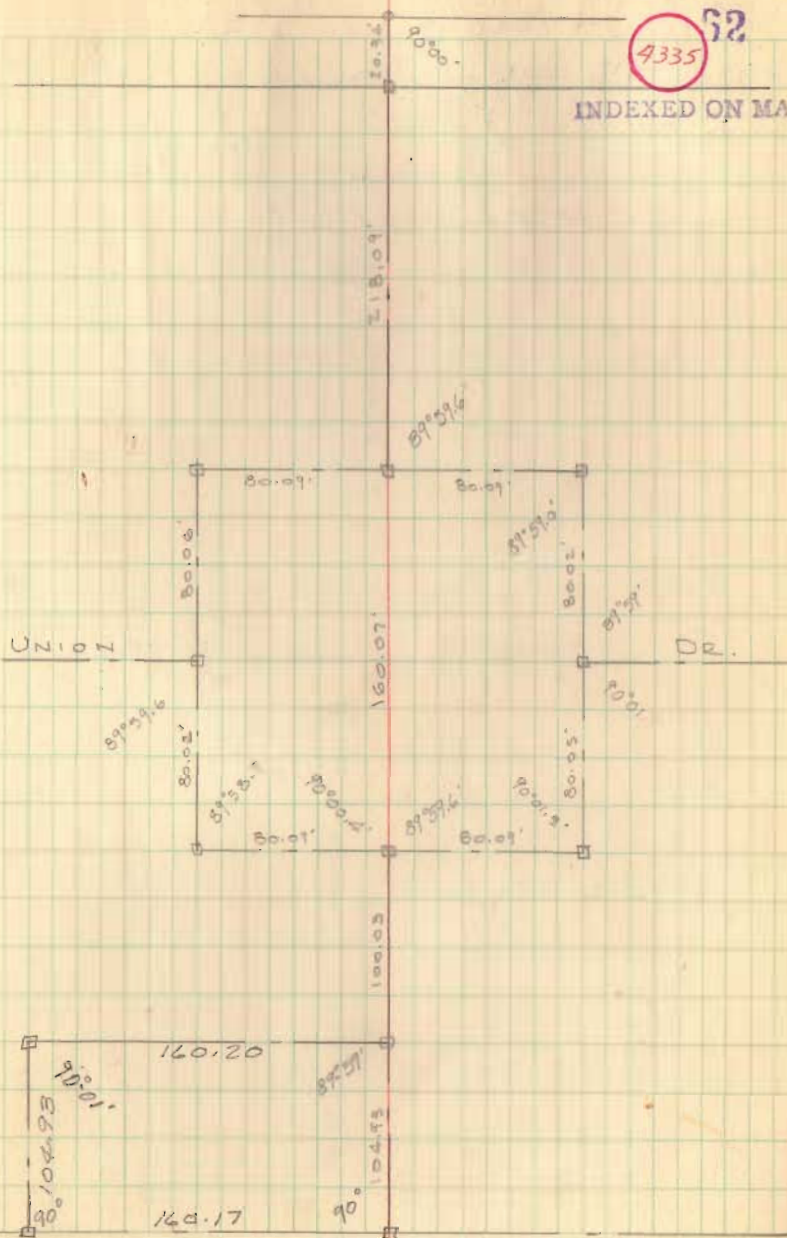
52

4335

INDEXED ON MAP

CLARK DRIVE
FIVE PARKS

□ = 1" ReBar Set on Φ



87

HARDIN DRIVE FIVE PARTS

D = 1" # bar set

OFFSET LINE

4336 53

INDEXED ON MA

LOT LINE

20.34'

90°00'

old # 35
found

298.20'

UNION

159.80'

DRIVE

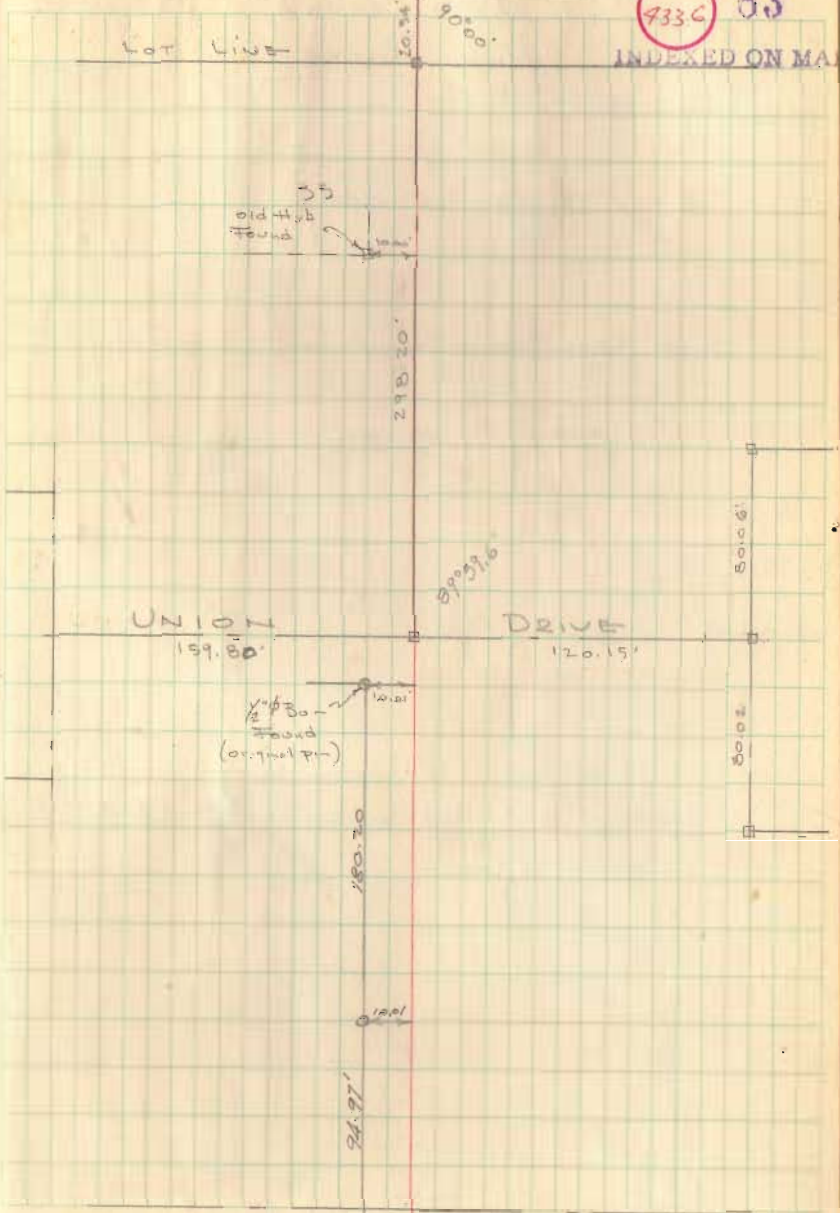
120.15'

old # 30 -
found
(or. 1st of 7-11)

280.30'

24.97'

50102
50101



Allen Drive
Five Parks

□ = 1" ϕ Re. Bar set

Five Parks continued on page 74 & 75

Gaslin
Kouberk
Slater
cox

7/20/65

OFF SET

LINE 7

LOT LINE

20.14

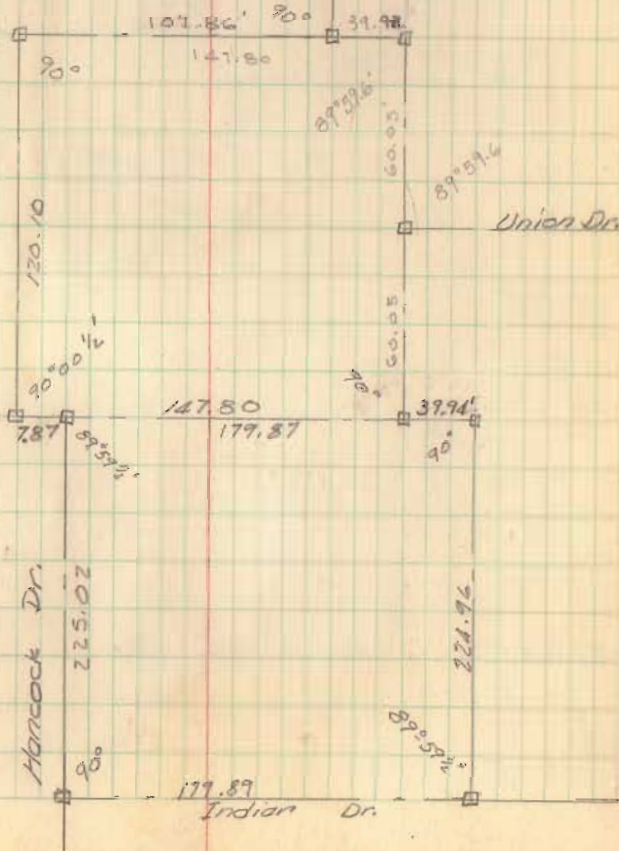
20.00

9337

64

INDEXED ON MAP

238.18



TWP. RD. 216

78 + 23.93 Resurvey Mon.

51 + 58.30 Resurvey Mon.

L. Gassler

D. Kaucher

J. Slater Front Ch.

6/29/65

J. Cox Rear Ch. 65

114 Sec. line

4332

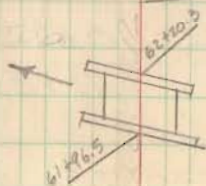
INDEXED ON MAP

67 + 41.2

69 + 4.3

62 + 41.5

Apparent



CR 11

TKIP. RD 216 BMS

Harrison & Lake

Sta	B.S.	H.I.	F.S.	Elev
BM #7	7.08	1188.56		1181.48
T/p	9.21	1194.70	3.07	1185.49
BM #8	2.41	1194.29	3.02	1191.68
T/p	1.38	1182.90	12.77	1181.52
BM #9	12.33	1189.15	6.08	1176.82
BM #10	0.68	1186.66	3.17	1185.98
T/p	0.23	1174.21	12.68	1173.98
BM #11	8.45	1176.02	6.64	1167.57
BM #12	11.20	1180.88	6.34	1169.68
BM #13			0.81	1180.07

CHECK LEVEL Slater ✕

BM 13	0.96	1181.03		1180.07
BM 12	6.03	1175.70	11.36	1169.67
BM 11	6.83	1174.38	8.15	1167.55
T/p	12.48	1186.44	0.42	1173.96
BM 10	2.43	1188.39	0.48	1185.96
BM 9	6.75	1183.56	11.58	1176.81
T/p	12.99	1194.50	2.05	1181.51
		1188.50		1191.67
BM 8	3.04	1194.71	2.88	1185.67
T/p	3.93	1189.41	9.23	1185.48
BM 7			7.94	1181.47

2/30/65

132

L. Gesslin # J. Slater #

J. Cox ✕

P. Kaucher #

68

RR Spike in ♂ 14 1/2' Et Sta 51+09.5

RR Spike in ♂ Lt 55+

Chisled + NE Cor. top step of SE HWY.

RR Spk. in ♂ Lt 65+

RR Spk in ♂ Lt 70+

RR Spk in ♂ Lt 73+

RR Spk in ♂ Lt 76+

TWP RD 216

Profile

Sta	B.S.	H.I.	F.S.	Elev
BM 8	2.35	1194.03		1191.68
51+58 ²⁰	2.35	1194.03	9.98	1184.05
+75			9.55	84.48
52			9.33	84.10
+25			9.06	84.97
+50			8.67	85.36
+75			8.10	85.93
53			7.28	86.75
+25			6.46	87.57
+50			5.60	88.43
+75			4.73	89.30
54			4.00	90.03
+25			3.57	90.46
+50			3.30	90.73
+75			3.05	90.98
55			2.87	91.16
+25			2.62	91.41
+50			2.26	91.77
+75			2.00	92.03
¹⁰ 56	1.06	1193.42	1.67	1192.36
+25			0.69	92.73
+30			0.35	93.07
+75			0.92	92.50
57			2.64	90.78

L. Gesslin
P. Koucher
J. Cox
J. Slater

4/30/65

♀ CR11

67

TKIP RD 216

PROFILE

Sta	B.S.	H.I.	F.S.	Elev.
		1193.42		
57	+25		4.66	1188.76
	⁵⁰ +25		6.79	86.73
	+75		8.55	84.87
	+50			
58			10.08	83.34
	+25		11.24	82.18
7/10	+50	0.94 1182.03	12.33	1181.09
	+75		1.99	80.04
59			3.02	79.01
	+25		3.93	78.10
	+50		4.69	77.34
	+75		5.39	76.64
60			5.65	76.38
	+25		5.94	76.09
	+50		6.16	75.87
	+75		6.33	75.70
61			6.25	75.78
	+25		6.10	75.93
	+50		5.94	76.09
	+75		5.82	76.21
62			5.43	76.60
BM 9			5.15	1176.85

L. Goslin
P. Kuycher
J. Slater
J. Cox

6/30/65

68

Elev. 1176.82

Sta ^{on}	TRIP	RD 216	Profile	
	BS	HT	F.S.	Elev.
TBM 9	11.93	1188.75		1176.82
62+25			11.80	76.95
+50			11.59	77.16
+75			11.10	77.65
63			10.54	78.21
63+25			9.76	78.99
+50			8.67	80.08
+75			7.23	81.52
64			5.29	83.46
+25			3.28	85.47
+50			1.69	87.06
+75			1.15	87.60
65			1.56	87.19
+25			2.10	86.65
+50			2.56	86.19
+75			2.71	86.04
66			3.36	85.39
+25			4.75	84.00
+50			5.30	83.45
+75			6.52	82.23
67	1.17	1182.17	7.75	1181.00 1180.82
+25			2.77	79.40
+50			4.89	77.28
+75			6.89	75.28
68			8.44	73.73

6/30/65

 Geodesy 21
 Kovicher 21
 Slater 21
 Cox 21

69

	TWP	RD	216	Profile
Sta	B.S.	H.I.	F.S.	Elev
68+25		1182.17	9.87	1172.30
+50			11.02	71.15
+75			11.93	70.24
69			12.19	69.98
+25			12.26	69.91
+50			12.22	69.95
+75			12.03	70.14
70			12.02	70.15
+25			12.15	70.02
+50			12.28	69.89
+75			12.36	69.81
71	11.56	1181.35	12.38	1169.79
+25			11.37	69.88
+50			11.25	70.10
+75			10.66	70.69
72			9.47	71.88
+25			8.71	72.64
+50			9.14	72.21
+75			9.60	71.75
73			9.68	71.67
+25			9.42	71.93
B.M. 12			11.67	1169.68
+50			9.03	72.32
+75			8.51	72.84
74			7.90	73.45

6/30/65

L. Geeslin
 J. Slater
 P. Kaucher
 J. Cox

70

Elev 1169.68

Sta	TWP	RD 216	Profile	Elev
74	B.S.	H.I.	F.S.	
74+25		1181.35	7.14	1174.21
+50			6.06	75.29
+75			4.55	76.80
75			2.88	78.47
+25			1.96	79.39
+50			1.67	79.68
+75			1.41	79.94
76			1.26	80.09
+25			1.54	79.81
+50			2.04	79.31
+75			2.39	78.96
77			2.70	78.65
+25			2.87	78.48
+50			3.03	78.32
+75			3.14	78.21
78			3.38	77.97
+24			3.36	77.99
BM 12			11.67	1169.68

6/30/65
 L. Geeslin
 J. Slater
 P. Kauder
 J. Cox

71

Survey of Lots 58, 59, 60, 61
 Logansville, Ohio
 July, 1965

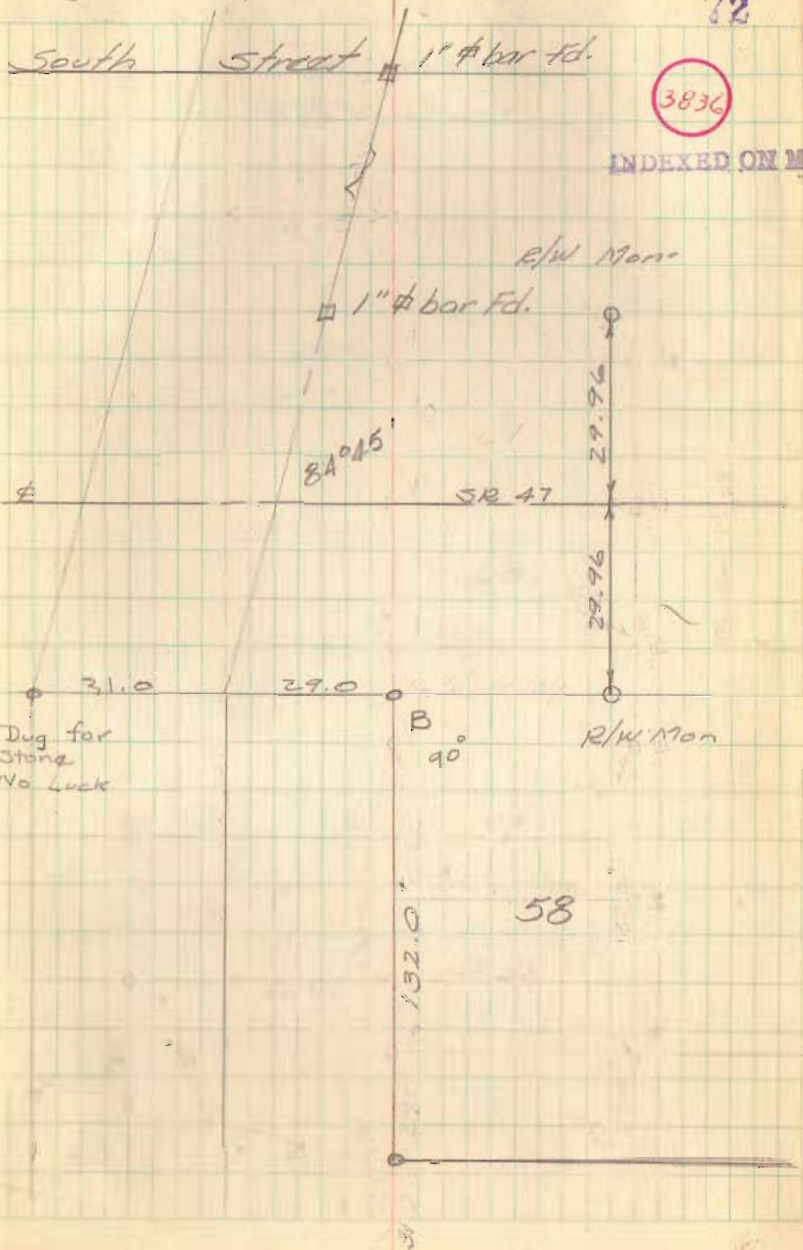
- A = 1" # bar Found
- B = 1" # bar set
- C = 1" # bar set

Center Street changes from a 42' street to a 40' st. at the South R/W line of SR 47. The \mathbb{E} from the North was projected to the South R/W line of SR 47. The Add. to the South Add. was originally laid out to begin at the West side of Cen. St. projected South.

See Plat BK B, Vol. 2, Pg 30

J. Slater ϕ L. Gooslin ϕ
 J. Cox ϕ P. Kaucher \times

72

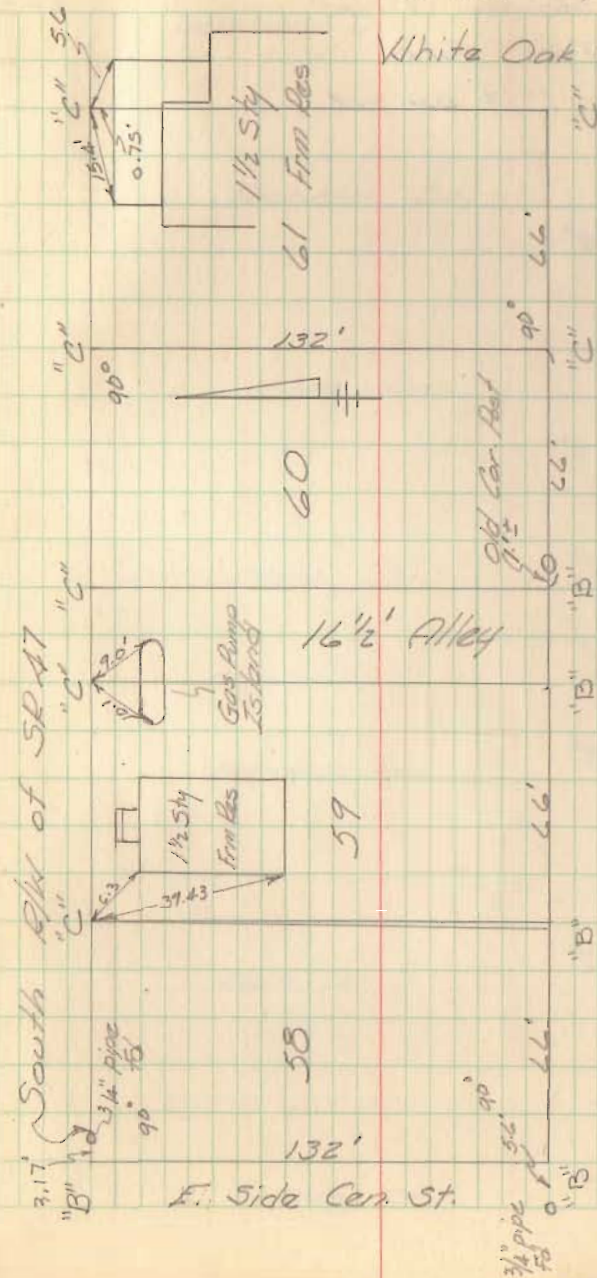


Survey of lots 58, 59, 60, 61 (cont.)
 Loganville, Ohio
 July, 1965

L. Geeslin Φ 1. Slater Φ
 P. Kaucher \times J. Cox Φ

73

White Oak St. 49' $\frac{1}{2}$



Indian Drive

Five Parks

□ = 1" # bar set

L. Gesslin &

J. Slater

P. Kaucher &

J. Cox

7/65

Delaware Dr.

15.0'

90°

180.18

INDEXED ON

4338

Franklin Dr.

90°

180.23

Miami Dr.

90°

180.19

Clark Dr.

90°

140.17

Hardin Dr.

90°

159.95'

Allen Dr.

90°

179.89'

Hancock Dr.

90°

Indian Drive

7/21/65

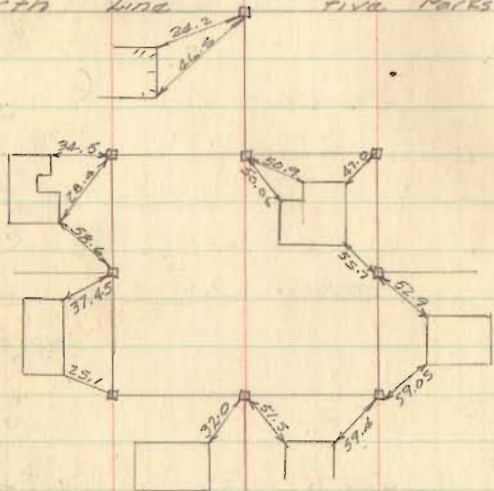
Five Parks References

Franklin Dr.

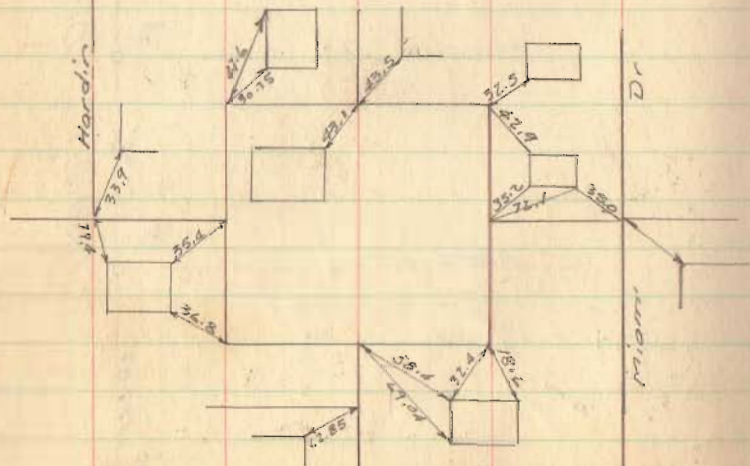
4333

INDEXED ON MAP

North Line Five Parks Allot.



Clark Drive



7/21/65

Slater & Cox Kauchar

4337

75

Allen Dr.

INDEXED ON MAP

North Line Five Parks

