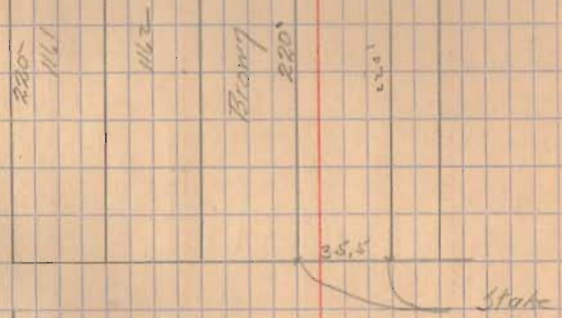
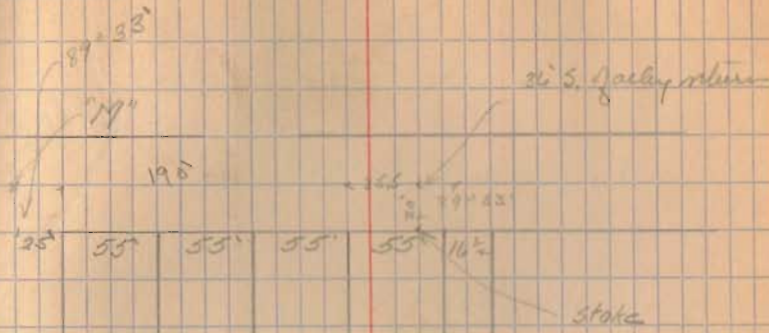




2117

Survey for A. B. Curtis  
on S. Hill Park Street C.R. 4-12-13  
O.S.P.

15



INDEXED ON MAP

2200

\* M. Park & Stanton.



C1 18

Survey of part of lot  
19A for J. B. Murrie

CH.  
O.C.R.

5-22-13

N Bronx G. Park  
HxH SE. 16.2  
E.L. Pole S.W. 15.63  
T.P. H.E. 26.85

Shortage of lot on Sandusky 0.36  
Excess V. " " Mad R. 0.75

SANDUSKY AVE

Stone

27°50'

54.64'

7°05'

95°75'

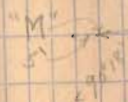
54.64'

MAD RIVER ST

501.4  
498.2  
3/2.9  
106  
50  
100  
2.40  
2.8  
1.72

503  
501.5  
1.5  
75

19  
503.0  
501.4  
1.6  
2.7



APR 1913  
SANDUSKY AVE.

Stone

506.75'

PARK STREET

BRONX PARK

MAD RIVER STREET

503.00'

17°50'

BRONX AVE.

500.95'

100°00'

INDEXED ON MAP

2200

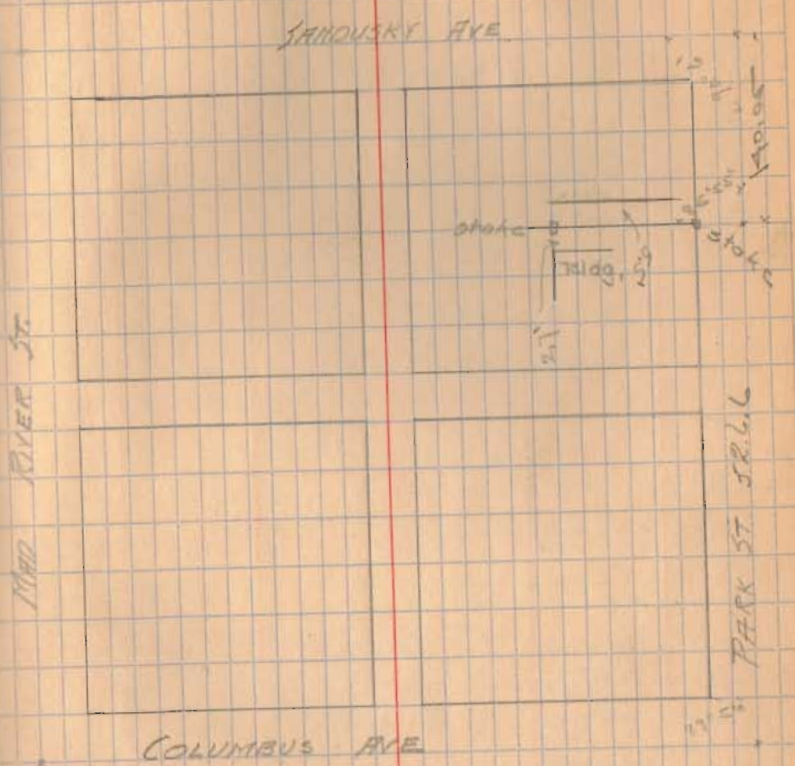
19 20

Survey of the south line of  
the north half of lots 240 and 243  
for the Episcopal Church Trustees

C.H.  
Prestiss Castle 21

526.6

11



INDEXED ON MAP

2202



Survey for Wm. L. Smith  
 5.35 T.D. B.10 Return

Angle Rush and Grain  
 38° 39'

Start @ Rush and Grain and measure north 318.6' and 481' and set spike in @ Grain.

Turned out to @ and set stake at 40' and 136.7 - The last named stake is 36.04' from @ of Rush which is the west line of said street

9786 | 50.000 (57.09)  
 45930  
 10160  
 9756  
 7140  
 55074  
 3260

33° 39'  
 21.44  
 11.53  
 On 11° 53'

9257 | 50.000 (53.6)  
 41435  
 35550  
 27661  
 17890

9786 | 40.000 (40.67)  
 39144  
 55600  
 74278  
 73120

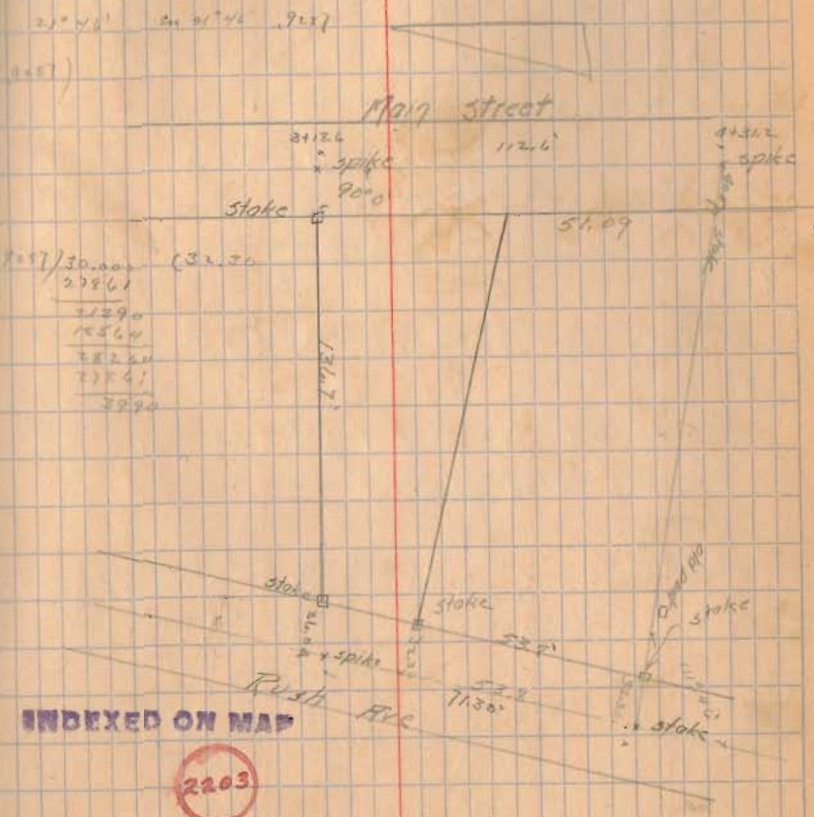
Ch. Jim Barr  
 Geo. Lutz, Wm. Smith

318.6  
 112.6  
 731.2

30  
 On 33° 39' 10-168.17-43 26.04

3329 } 20.000  
 29972  
 40270  
 49944  
 3360

Searched for iron bars at the NE. E. N.W. corners of this property as called for in deed but found nothing.



INDEXED ON MAP

2203

1926

Survey for Chan Dr. Laughlin  
near B. St. Stone quarry

Long and Williams Iron bar  
Sw. Williams cor. and 10' west of  
E side of Perry St.

Hyd SW. 24.58. SW. cor. 10' from  
NE 45.25. SE. cor. 1 1/2' along from  
N.W. 43.4

Long and Florence Iron bar

Long and Garfield Iron bar

Hyd. N.E. 27.6 E.S. file SE. 31.0  
E.P. file N.W. 37.2

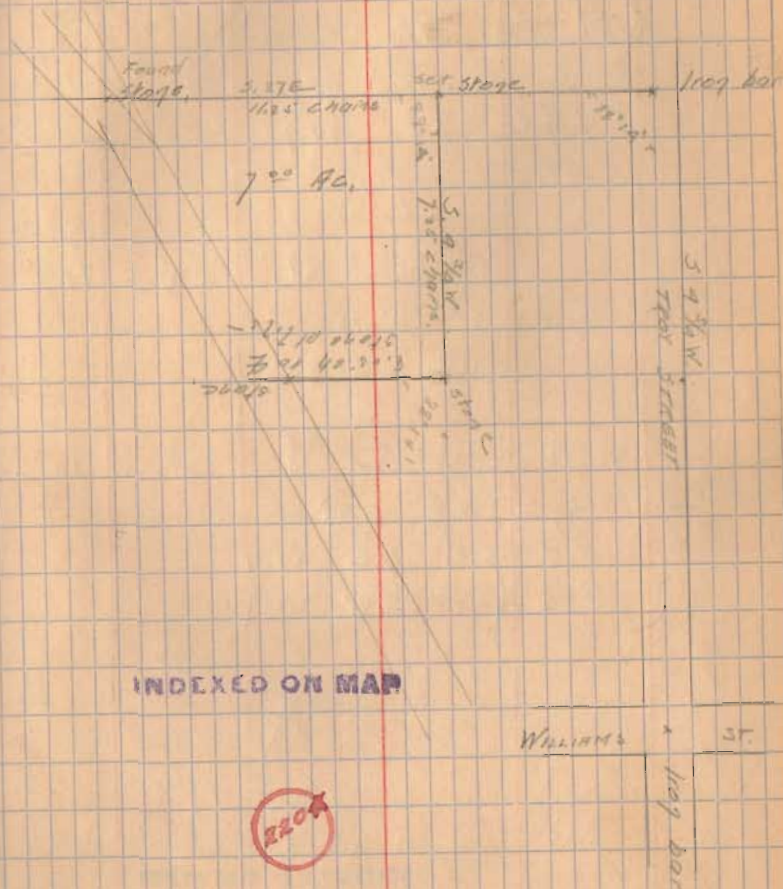
See on Perry St at A.E. cor. Dr. Laughlin  
land S.W. angle Perry St and 10' west  
line 89° 14'  
Boundary of Perry St S. 1 3/4 W

1927

Janin Sheppard  
Carmen Sullivan 11-29-27

27

March





27A

Survey for E.W. Patterson  
Lot 429 on W. Colo Ave

Colombo and Perry (South) Iron bar

Old stone N.E. 24.15  
Hyd S.W. 33.90  
E. S. pole S.E. 28.70

Colo. and West St. Iron bar  
Hyd. S. 20'-10"  
Red Colo N.E. 48.3

West and Sand. Iron bar  
Hyd N.E. 32'  
E. S. pole N.E. 21.4  
E. S. pole S.W. 22.7

Sand and Perry Iron bar

Apple tree E. pole 21.5  
" N. pole 47.0

INDEXED ON MAP

2205

13.25

C.F.I.  
G. Sullivan

11/20/13

467

Center of Perry south to center of West-  
467.0 Excess on N. side is 2.05

Set 1 foot west of stone at SW corner  
lot north pole at iron bar at  
center of Perry and Sand. Interval  
of Colo Ave. Distance of Perry south  
to E Perry north 13.25'

N.E. angle Perry north and Colo Ave  
90° 3'

E of Perry St on N. end line of  
Colombo to partition fence is 70' 2" feet

E of Perry St to partition fence on  
north side of lot 75'

E of Perry St to fence line at  
north side of lot is 13'

Excess due lot - is 0.67

Distance on N. side Colo 139.3 ft  
west of west line of lot

S. W. angle Cole and West  
from sidewalk on West  $90^{\circ} 30'$

West line of alley to E. West-  
Street  $312.5'$

Measured distance Cole to Sand  
on West (Ang. Rec.)  $524.3$   
 $524.4$

Measured  $495.6$  from above of the  
line Cole, S. east of E. Perry to  
line of E. Perry and Sand.

Excess  $9.1$  ft.

Measured N on E Perry  $224.5$  from  
line of Cole for south end  
of alley

Measured N. E. angle  $90^{\circ} 3'$  and  
measured east  $77.7$  and set  
stakes. measured  $63.7$  farther  
for east line of Burtch lot

456

966

495.6

496.5

9.1

275  
20  
16 1/2  
311 1/2

290  
290 30'

22'

all 33' =  $229$   
 $0096$   
1349  
 $2016$   
2404



EE 32

Survey of part of Foundry  
and Machine Co. lot

Iron bar      Centre and Dist  
Hyd. N.E. 41.5'    E. S. July SE. 29.15  
T.P. S.W. 26.2

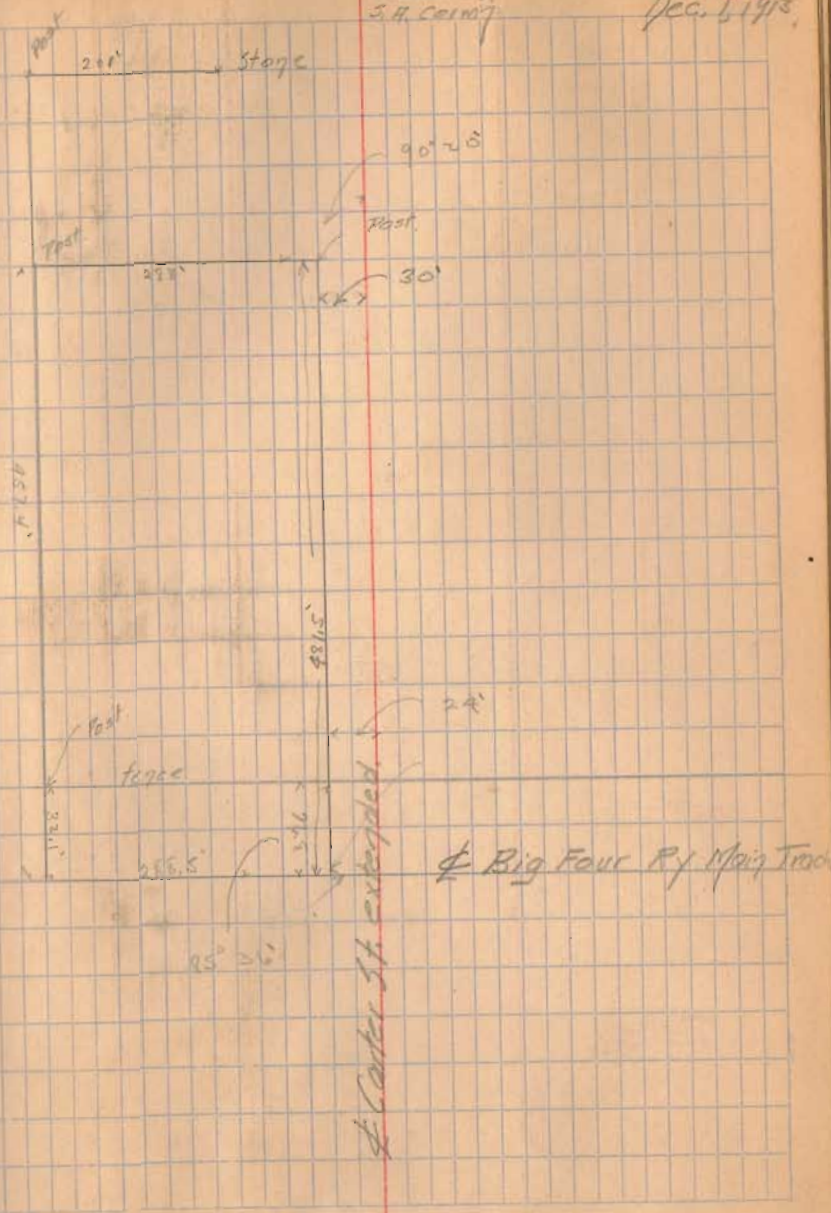
Produced  $\frac{1}{2}$  Carter Bar from  
mine bar at dist and  $77^\circ$  at Mine

Bearing of Carter  $\frac{1}{2}$  is  $25^\circ \frac{1}{2}$  W

6570

C.H.I.  
C. Sullivan,  
S.H. Cairns

EE 33  
Dec. 5, 1913



Survey of part of out lot  
for Harry Brehm. March 25, 1914

See notes in Book 3 page 16

Measure along fence at south line  
of Spring St 3.10 chain from  
Horse post at the <sup>SW</sup> corner  
of Sudlow and Spring to the corner  
post at the N.W. corner of Brehm

Measured west along the south  
line of lot 133 - 3.20 chain from  
iron bar on west line of Sudlow  
as called for in deed.

Set transit at 2.50 chains west  
of above iron bar and set pole  
at corner (N.W.) part of Brehm  
lot. Measured S. 14° E. 4.19 chain  
and set  $\frac{1}{2}$ " iron bar about 11' long.

Measure along the north line  
of Catharine Christy 3.30 chain to  
a stake set 30 ft west of line  
as shown by bar at Spring St  
at Colton

06/310	06
	03
	19 8
06	19 8
154 0	2 7 8
18 6	
204 6 0	4 2 3

Ch.  
J. R. Hayes  
Harry Brehm

Set iron bar at Sudlow  
and Colton. Pole at Spring and Sudlow  
bearing of Sudlow N. 15° W.

Measure along the west line of Sudlow  
4.23 chain to beginning

INDEXED ON MAP

2206



2838

Sunny part of lot 185  
for Est. J.B. Davidson

March 21 C.F.L. J.F. Harris  
S.M. Cassid.

Distance Chillicothe to Auburn on  
Mad River 516.30 4 measurements  
Mad River to Park on Auburn 508.70 2 "

S.E. angle Mad River and Chillicothe  $90^{\circ} 4'$

N.E. " " Auburn  $89^{\circ} 49'$

Shortage on Mad River 0.20

Increase in from  $\Phi$  Auburn on R.M.R.  
205.9 and 249.9 for S. and N. line of  
Davidson

Set new nail at 249.9 and tunnel <sup>SE</sup>  $\#$   $\checkmark 90^{\circ} 7'$

516.30 Chillicothe to Auburn  
508.70 Mad River to Park

249.9  
249.9

Mad River on of Chillicothe " " 11'  
" " Auburn Stone

Hydrant S.E. 26'-10" Fence N.W. 41'-10"  
Lamp post S.W. 29'-1"

Auburn and Park 100' bet

Fence Post N.W. 33'-9"

" " S.E. 33'-4 1/2"

Hydrant S.W. 24'-11"

90° 4'

90° 11'

90° 7'

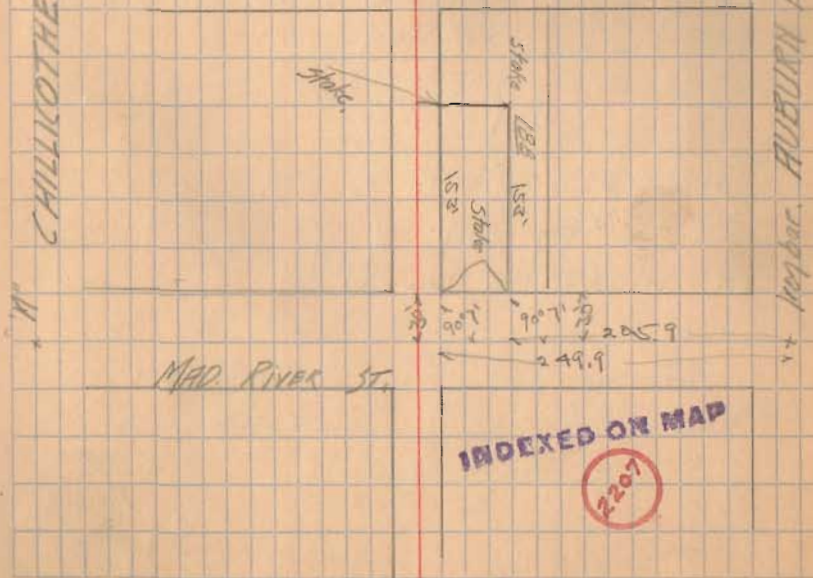
CHILLICOTHE AVE

AUBURN AVE

MAD RIVER ST.

INDEXED ON MAP

2207



1840

Survey of line between  
D. W. Jr. & Cracker line and  
Daniel Roth in Union Twp

Found stone at S. W. cor. S. 12 T. R  
and stone set by Bailey at S. E. cor.

S. 12 T. 4 R. 13

Distance between Section corner 78.89

Set transit about 2 chains west  
of the supposed Q corner and produced  
line from S. E. cor. section 12. The  
line drops at north of section corner  
at S. W. cor. Sec. 12

Bearing of trial line S. 56 E

The fence at the Q section is  
fence. 24 links N. of the section  
line between the cor. stone.

Measured from stone at N. E. 1  
corner lot to fence on S line of  
section 7. 27 chains

79.86 64.56  
528  
570

C. A. Hyskeep  
S. H. Buchanan  
J. H. Holmes  
Stanley W. Cold  
41  
A-3-14

looked for stone at S. W. cor  
church lot but found nothing

INDEXED ON MAP

2208

161  
152  
313

161 x 78.89  
813 161

78.89 5/4  
47334 81  
7889

26.89  
152  
15778  
39745  
7889  
1199128

313 / 127.0129

1262  
1812  
1565  
2470

40.58

313 / 1199128  
939  
2608  
2484  
1972  
937  
33

39.31  
40.58  
78.89

Set stone at about  
chains from west line of  
section and 38.31 chains  
from east line

Set stone mark + on top and a  
brick placed on the mark and which  
stone is 24 links S. of present fence  
and in off-hand - a old nail fence.

Set two stakes on the west  
half of above section line.





Survey at East Liberty - for  
 F.C. Hamilton, Celia A. Inskip, Guy  
 H. Inskip and V.H. Hamilton.

Found iron bar at S.W. cor. F.C. Hamilton  
 1/4 acre tract.

Measure east along center of road  
 distances & call of my deed. Center  
 of bridge over Sugar Run check  
 exactly as shown in deed.

Draw iron bar as shown on plat -

Started from point at N.W. cor. F.C.  
 Hamilton 1/4 acre tract and measure  
 east distance called for in deed.

Went bank of Sugar Run check as called  
 for in deed.

Measure across the west end of F.C. H.  
 1/4 acre tract and set iron bar as shown

Bearing of pipe N. 61 1/2 E.  
 N line of F.C. H. 1/4 acre  
 tract N. 32 W.

C.H.I.  
 V.H. Hamilton  
 Celia Inskip

May 7, 1914 P.M.

Found iron bar Hamilton.		Foot...
4. Acres F.C. H.		Iron bar
Iron bar		Iron bar
Celia A. Inskip A. H.C.		Iron bar
Iron bar		Iron bar
Guy H. Inskip A. A.		Iron bar
Iron bar		Iron bar
Celia A. Inskip		Iron bar
Iron bar		Iron bar
Celia A. Inskip		Iron bar
11.12 Ac.		Iron bar
Iron bar N. 32 W. 9.34 cts.		Iron bar
F.C. Hamilton 11.13 Ac.		Iron bar

INDEXED ON MAP

2210

Bridge



Chain survey of Isaac C. Mule  
in Union Twp. May 13, 1914

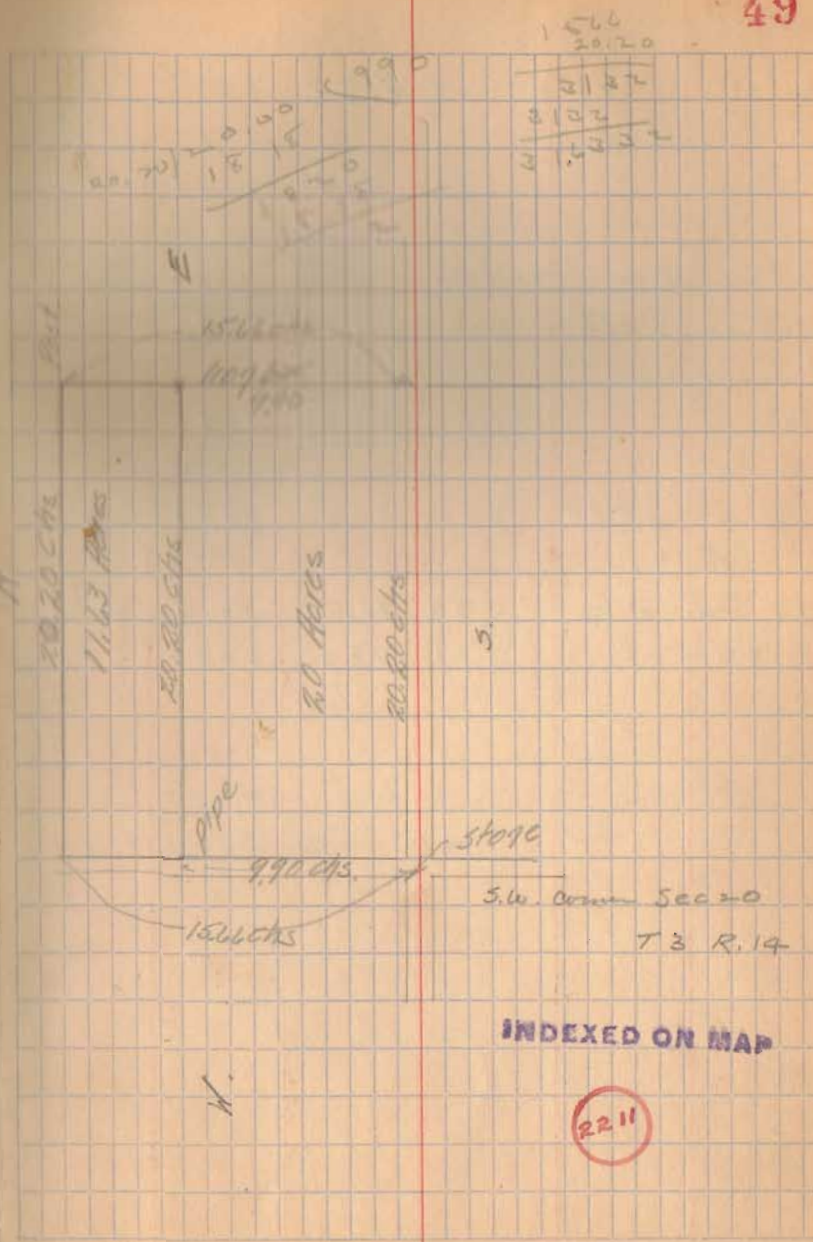
Measured east 20.20 chains  
from stone in center of the lot  
road and S.W. cor.  
to line of fence

Measured north along fence and set  
mark at 9.90 to part of 20 acres

Measured to fence 15.66 chains to  
fence at north end of oak field

Measured along the north side  
of 20.20 acres Sec. 20 to E road  
returning N and S.

Measured north 9.90 chains along  
road and down ~~immediately~~ in front  
line on east side of road at 15.66  
set out picket on fence to east for line



INDEXED ON MAP

2211

Survey of 115 ft. off north  
end of lot 238 for John Dickman

Found 2 Columbus firm stone at  
Park and Main River.

Set spike in center of street  
on approximate lot line

Quarries S along fence  
150' on each side and set stake  
and lock

Stakes are set at 55.3' apart.

These stakes not set for line  
E. and W.

INDEXED ON MAP

22/2

O.C.P. 9-24-14



Lucie Patterson  
Churchill and Herbert on Park St.

Measure N.E. angle Sand  
and Park  $88^{\circ}-47'$

Measure N. or S. W. of  $\frac{1}{2}$  of  
Park  $30 + 124'-10" + 66 = 214'-10"$   
 $= 214.8$

Run N.E. angle  $88^{\circ}-47'$  and  
measure east 25' to E. line  
Park and N. line of

See page 110

This Book

INDEXED ON MAP  
2219

At 108' east of east ~~point~~  
line of Park set stake by  
this line but moved this stake 1.5' S.  
to conform with fence on N. line  
of Churchill. This place this  
stake on line with old post - which  
Mrs. Churchill says has been  
considered the line

Oct 29, 1914 CAI O.C.R. 57

$\frac{3}{0.175}$   
 $\frac{.58}{2.33}$

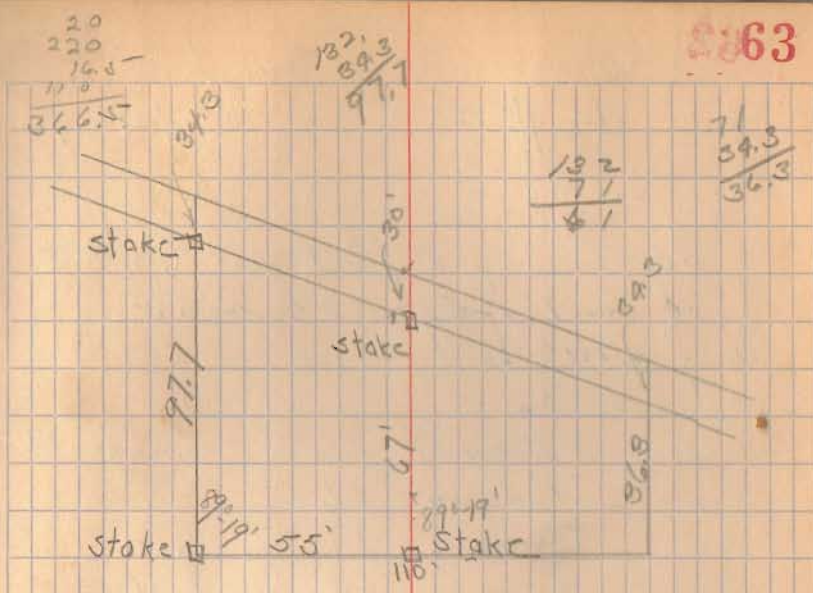
$\frac{4}{175}$   
 $\frac{.44}{}$

Survey of west half of lot-  
409 for C. B. and B. C. P.  
3-27-15 C.F.L.  
O.C.P.

See Private Survey Book pages 50-60

Measured east on E. Sand from  
of West  $20 + 220 + 16.5 + 110 =$   
for west line of lot 404

Runned S.E. angle  $89^{\circ} - 19'$   
Bk. 3 pg. 52



$$\frac{61}{110} \text{ cot } \theta = .554574$$

$$\theta = 29^{\circ} 11'$$

$$\frac{30}{\text{Cot } 29^{\circ} 11'} = \frac{30}{.5745}$$

$$\frac{110}{.554574} = 198.52$$

$$8745 \overline{) 30,000} \begin{matrix} 343 \\ 26235 \\ 37650 \\ 34080 \\ \hline 25700 \end{matrix}$$

INDEXED ON MAP

2214

$$\begin{array}{r} 97.7 \\ 86.3 \\ \hline 2/134.0 \\ 67. \end{array}$$



2064

Survey of Lot 148 for  
 J. C. Longfellow

CAL.  
 OCT.

April 2, 1915

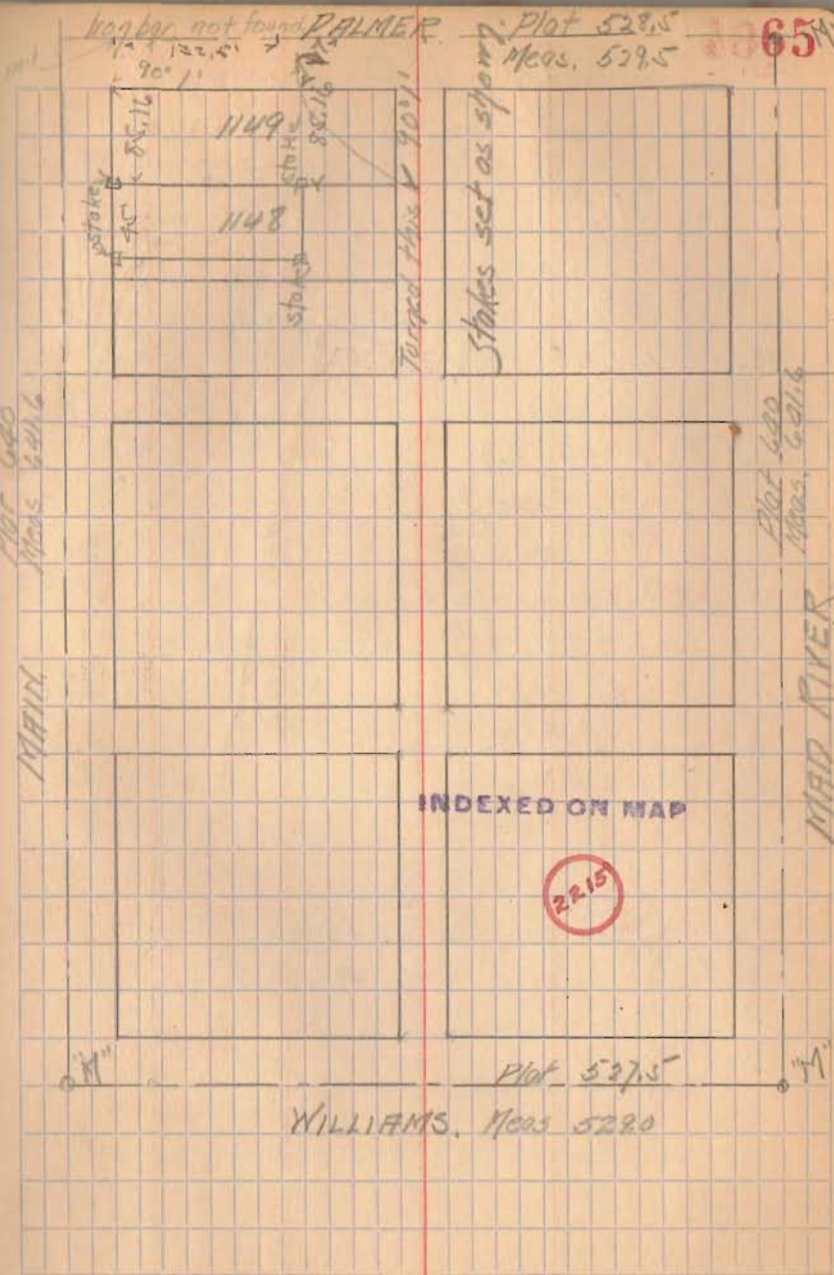
For survey of block see Private  
 Book No. 1 page 23 made  
 May 4, 1908

Excess on Main St 1.6' = 0.16 per lot  
 " " Mad River 1.6' = 0.16 " "  
 " " Palmer 1.0 = 0.50 " "  
 " " Williams 1.5' = 0.75 " "

Main and Palmer Iron bar

S.W. corner school house, lower  
 course of dressed stone 79.23  
 Sugar tree 7" & W. 57.09

30  
 55.16  
 85.16  
 45



566

Hamilton Cross Survey 4-2-15  
 Williams + West iron pin Hyd SW. 42.9  
 N.W. & 1<sup>st</sup> sta. frame house S.E. 45.9  
 Tel. pole N. of E. 50.82

Williams + Troy iron pin old cent Mill. Ave  
 and is' W. of E. side of Troy St.  
 Hyd. S.W. 24.58 S.W. & 1<sup>st</sup> sta. frame  
 house N.E. 45.28 S.E. & 1 1/2 " "  
 " N.W. 42.4

West + Garfield iron pin  
 Hyd N.E. 27.6 Elev. of pole S.E. 31.  
 Water valve N.W. 28.45 " " N.W. 37.2  
 N.E. & house S.W. 32.7

10  
16  
12  
9

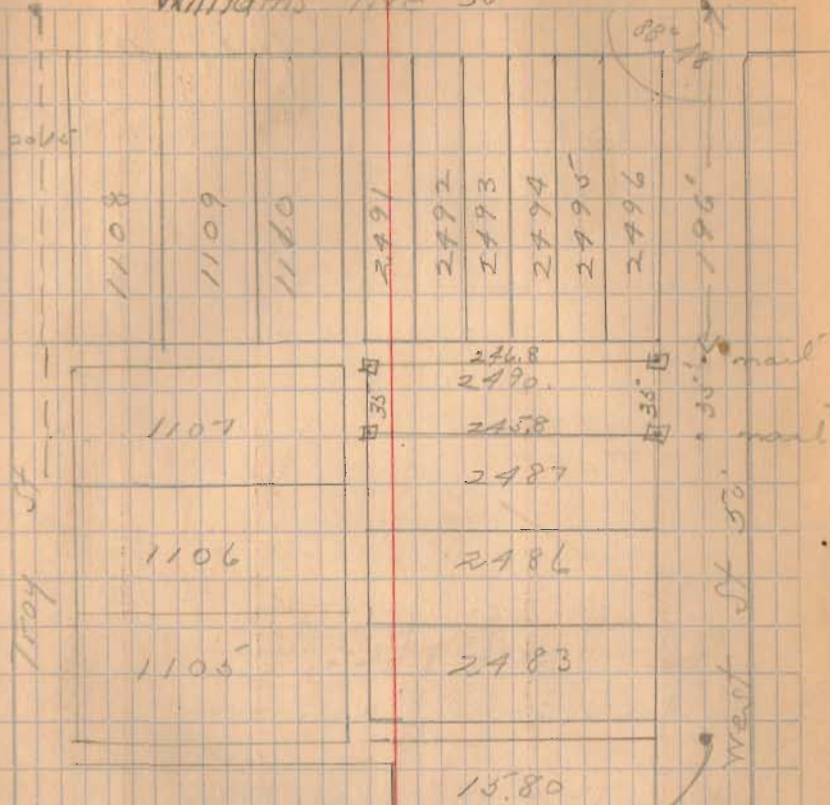
5.7  
3.5  
4

{ see City survey (994)  
 City Book 274 page 75

O.R.  
C.M.R.

Williams Ave 30'

67



found spike in old stake at 346.8  
 from Williams Ave South.

INDEXED ON MAP

2216



74

Survey for P. W. Hill  
Park and Auburn

Park and Auburn Iron bar

Lines post N.W. 33'-9" SE, 33'-9"

Hyd. S.W. 24'-11"

W. end inlet N.E. 21.55

W. " " N.E. 21.2

Auburn and Plover with S. Iron bar

Lamp post N.W. 28'-8" Hyd. S.W. 71.5

W. end iron inlet N.E. 21.1

gas pipe N.W. 28.4

Chillicothe and Park

Hyd. N.E. 24'-9" Lamp post 22'-8"

Plover and Chillicothe

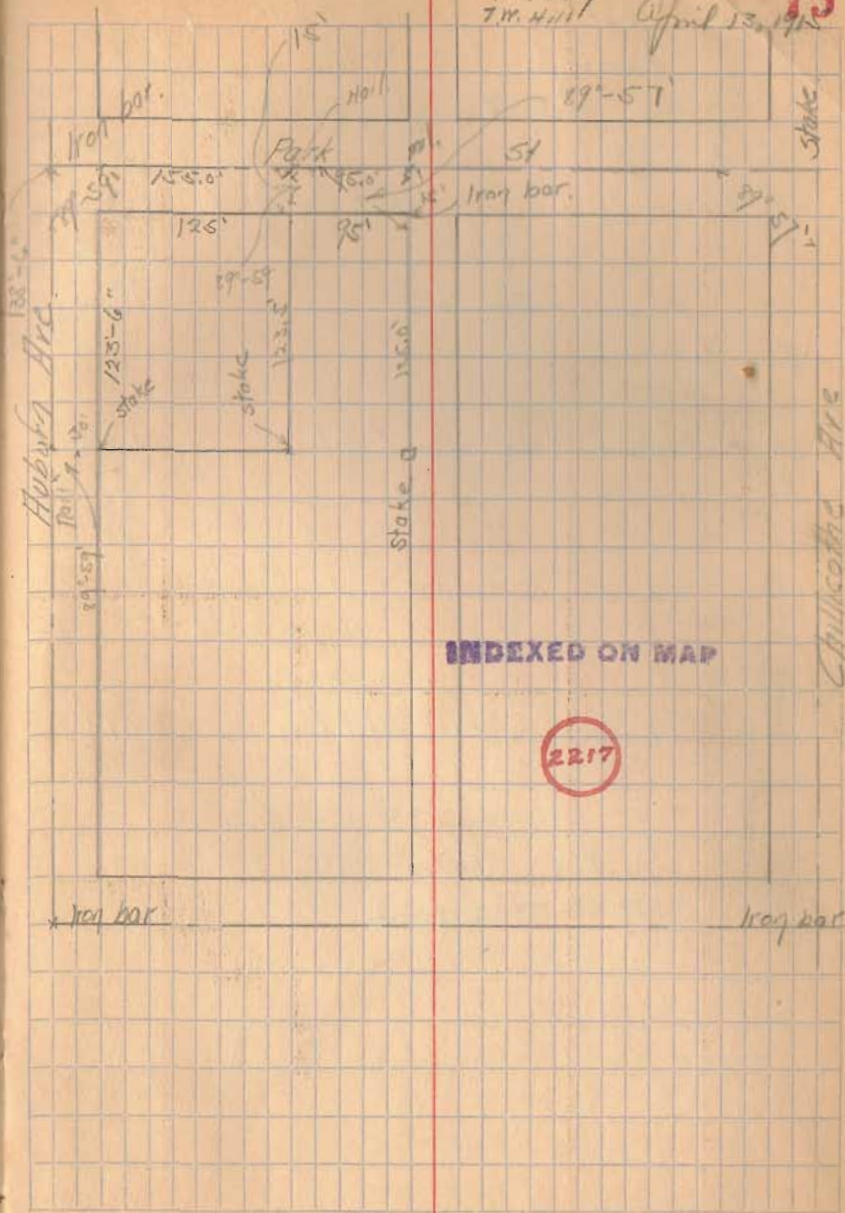
Hyd. N.E. 26.05 W. end iron inlet face

of cut <sup>SE</sup> 23.54 Same N.E. 23.8'

W. end iron inlet N.E. 21.1

CAI  
OC. Policy  
T.M. Hill

75  
April 13, 1911



INDEXED ON MAP

2217

\* Iron bar

Iron bar

Survey of part of lot 51 from  
A. Smith, - 7 this is to check  
survey of O.C. Picking made 47-15

Bk 2 pg 16 Distance on Elm - Chillicothe to Chieli, 529.58  
Plat 526.5  
Excess 2/3.08  
1.54

Bk 2 pg 28 Distance on Chillicothe - Elm to Det 500.5  
Plat 501.5  
Shortage 1.00  
per lot .125

30  
2.50  
8.25  
5.5  
258.80

Distance on Chillicothe Det to Elm 501.5

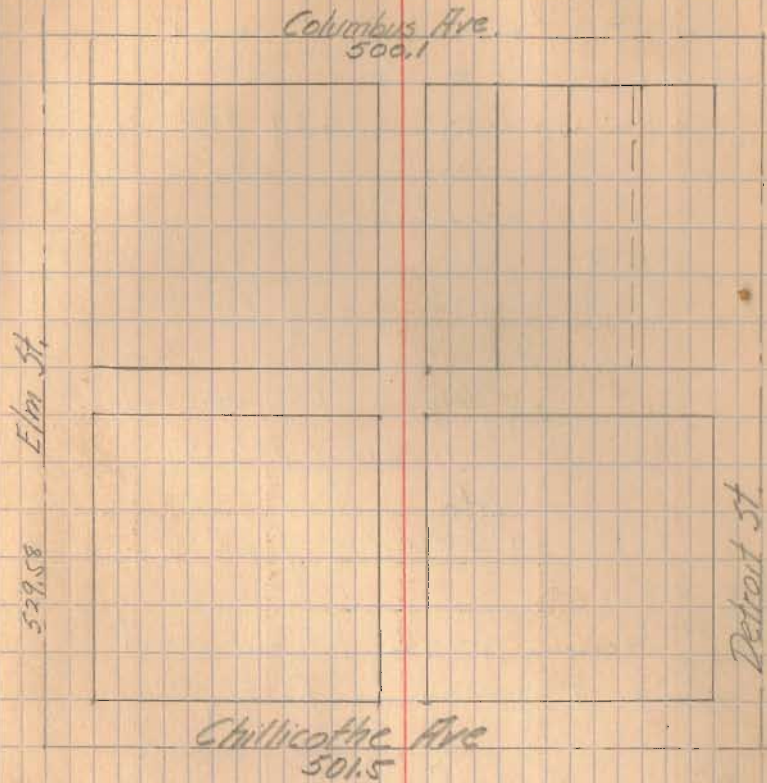
Distance Chillicothe to Chardet 527.6  
Plat 526.5  
Excess 1.1

Measured S. 269.79 on Elm from E of  
Columbus for E of alley.

Measured N 258.4 on E Det from E Chillicothe  
for E of alley.

40  
220  
8.25  
1.54  
269.79

C.A.I.  
F. Spick 4-15-15



INDEXED ON MAP

2210



Set + Cols and set and  
measure west on  $\frac{1}{2}$  Colo. Ave

$30 + 55 + 10 - .13 = 94.87$  for  
east line of Switzer  $45 - .13 =$   
 $44.87$  for first line

Stake at N.W. Cor  $36.02$  from  $\frac{1}{2}$  Colo  
N.E.  $36.04$

Measured  $44.87$  between these stakes  
line in  $\frac{1}{2}$  of alley between  
Chick and Colp

From nail  $94.05$  from  $\frac{1}{2}$   
of Detroit

Measure  $44.92$  between nail  
set on  $\frac{1}{2}$  of alley by Richey

Buy  $\frac{1}{2}$  falls about .04 S of  
 $\frac{1}{2}$  of alley as shown by Richey

Measure  $11.94$  between back  
in stake at 3 S. of lot line  
by Richey

$$\begin{array}{r} 30 \\ 55 \\ 10 \\ \hline 95 \\ \hline 13 \\ \hline 94.87 \end{array}$$

Stake are set  $5.27$  N of  $\frac{1}{2}$  in  
east side and  $5.25$  " " " "

Set <sup>up a west</sup> nail at east line of Switzer  
and  $\frac{1}{2}$  of alley and mark point in  
 $\frac{1}{2}$  of Colo

92

Survey of part of lots 189-204  
for O.W. Prall  
C.H.I.  
Frank Spirk 4-29-15

See page 38 this book  
and page 112 Book II

Measure S. m & Mad River 189.7  
and 219.7 for N. and S. line of Prall

Measured from rim bar at Auburn  
m & Mad River 249.65 feet to  
nail set for N. line of Danbairn  
4-31-14

Measure of Auburn to Chaska  
515.88  
515.78  
515.90

Excess on Auburn  $2.2 = .27$  feet  
" Chaska  $0.18 = .02$  "  
m & sely  $18$  feet

Measure east 20.26 m.S. line  
08  
20.18 N. line

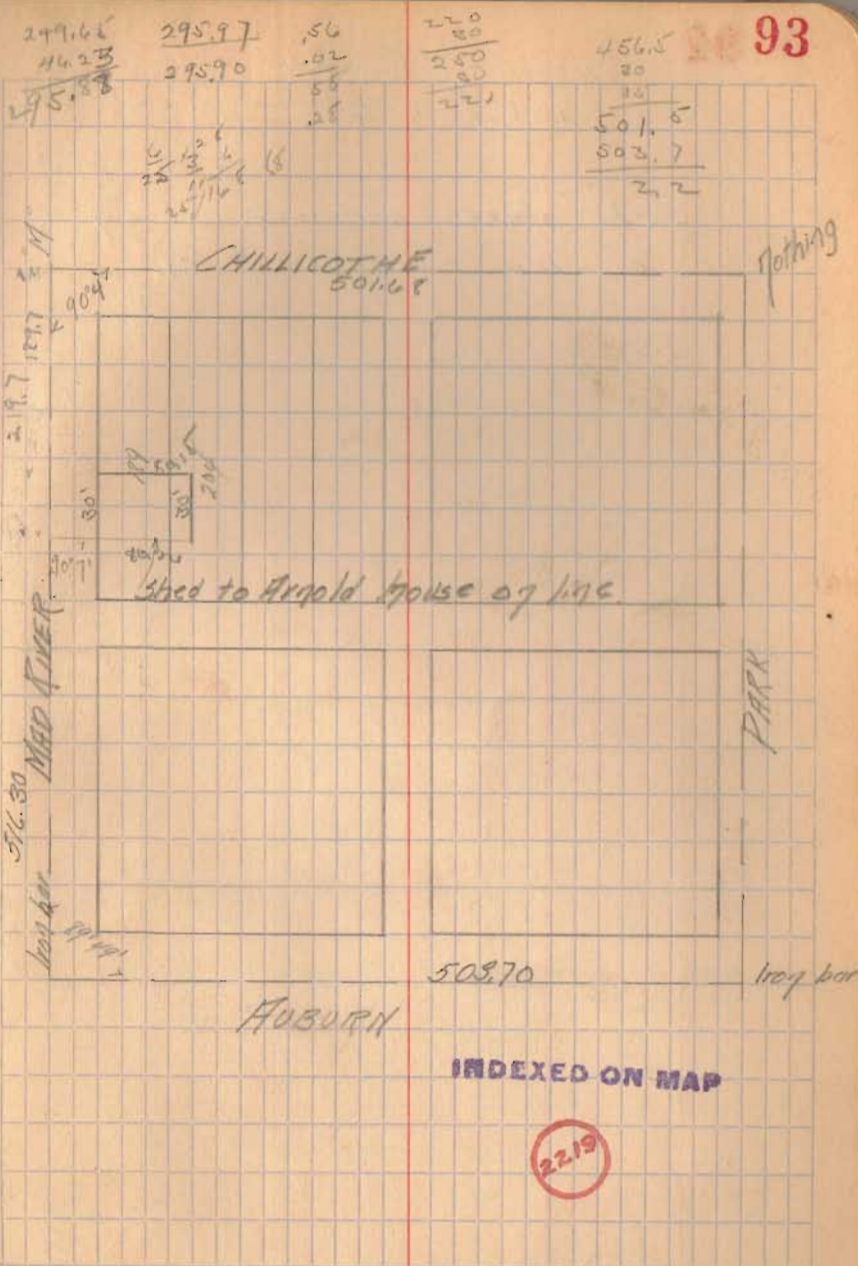
249.65  
46.25  
295.90

295.97  
0.02  
55  
295.95

249.65  
46.25  
295.90

456.5  
20  
20  
501.5  
503.7  
2.2

93





2094

Survey of lot No. 2173  
Cambridge Ave.

Set stakes and made X's of  
the cement walk as shown.

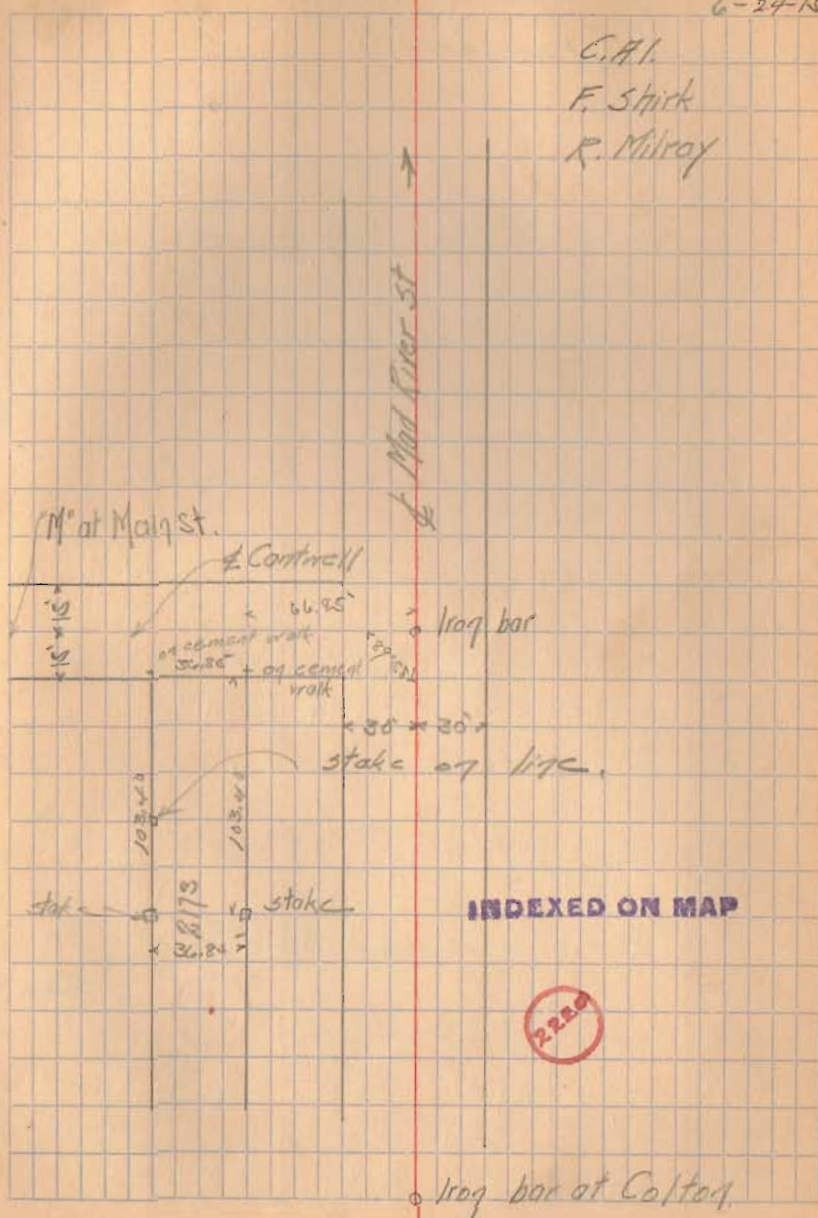
2095

6-24-15

C.H.I.

F. Shirk

R. Milroy



5996

Survey of part of lot 40  
for H. L. Kennedy

Distance Sandusky to Brown  
and on Detroit 501.38  
Shortage 912  
for lot .015

N.W. angle Sand and Det 89° 46'

S.W. angle Brown and Det, 90° 12'

Measure S. on E. Detroit

15 + 55 + 55 - .08 = 124.97 for N. line

Kennedy

Measure S. 30.99 for S. line of K.

At N. line of lot turned  
angle N.W. **INDEXED ON MAP**

222

B.M. 87.06 Brin and Det

100. 125 88.31

9.71 83.60 Top of stake at

Corner at lot 76:2 N. S. Det Kennedy

C.A.I.

P.M. F. Shirk

$$\begin{array}{r} 15 \\ 110 \\ 3 \\ \hline 154 \end{array}$$

$$\frac{11}{12} = \frac{158.1}{154}$$

$$\frac{158.1}{154} = 1.0266$$

6-24-15 97

and 6-25-15

Distances measured by S. J. Warden  
Sandusky to Brown on Elm - Average  
of two measurements 501.28  
Book 120 page 97

Set pin in E. Brown near E. 10'  
pin in alley. Measure S. at  
Wall S. the paving walk. At 70.0'  
N. line of shed of lockhart. At 126.5'  
fence line of lockhart.

N. side of lockhart's barn to fence line  
on S. = 156.0'

At 156.0' old fence post at south line  
of Kennedy. At 182.56' N. line of Pearce  
at 236' N. line of Pearce's walk

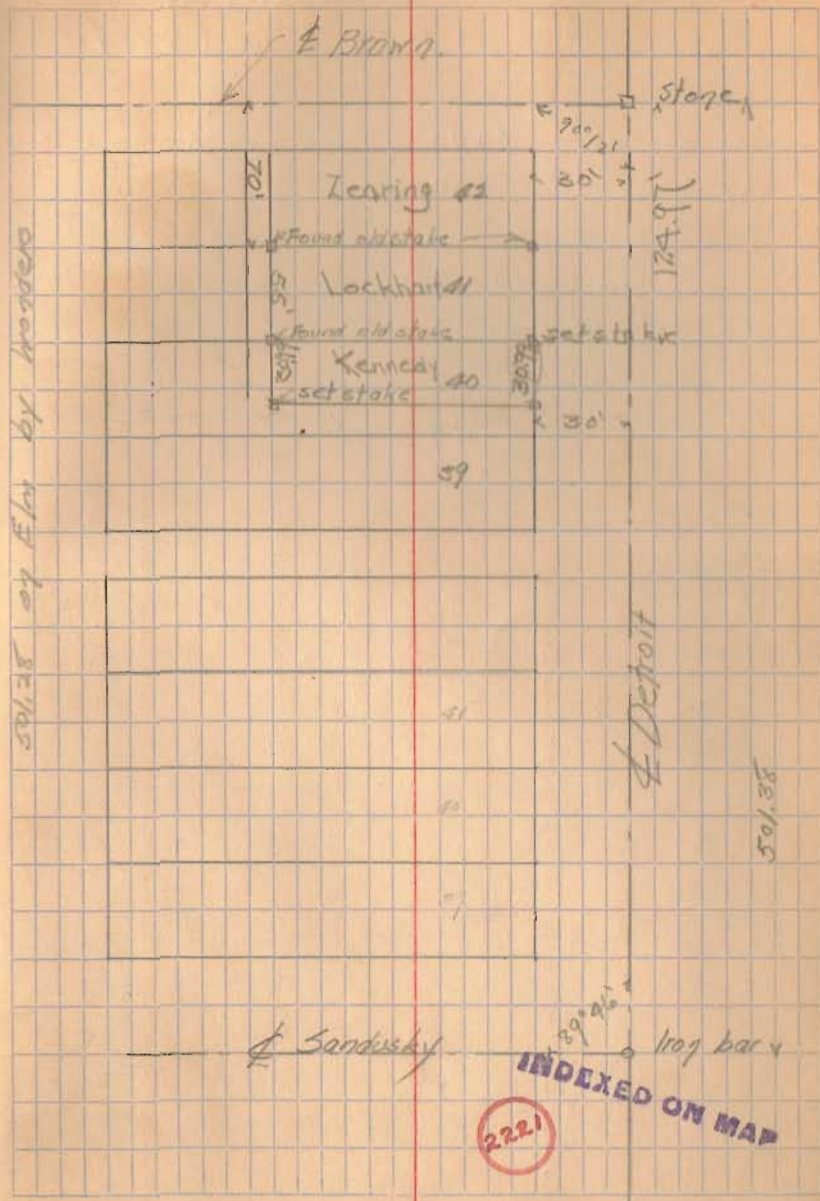
Found old stake at N.W. or at east end  
of lot 40 at 70' S. of E. of Brown st.  
Found stake 55 S. of this stake  
Measure S. 30.99 and set  
stake at S.W. cor. Kennedy.

See plat next page.



Notes for survey of lot No. 41  
Book 1 Page

270  
36  
---  
216



Survey for Home  
and Board of Education

C.P.L.  
H. Kerr.

9-22-15

Mrs. Rowlands  
2014 St





1110

Survey of line between C.H.  
Churchill and Maud Harold Kerr  
Lawson White 10-6-15

See note on page 56 the book.

Measured return fence at back  
line of Churchill 50.0'

as 11'-25" - 9431	50,000	( 53.01
	47 155	
	28450	
	28293	
	16700	

At west line of White farm 50.9'  
from N. line to line White S. fence

At west end of Churchill fence  
N. stake line to White S. fence 50.12'  
of posts measured.

Set stake just east of big stone  
on White S. line.

1111

