

= Contents = 9887-Rucks.

✓ Buckeye Port. Cement Co.	<sup>Survey</sup>	3
✓ Muzzley -		12-13
✓ Blair -		10
✓ Longlake - Hogan	<sup>TTRF - Sec 27</sup> Bloomfield	18
✓ Eliza Huber - Pres. Wright	<sup>TTRF Sec 15</sup> Bloomfield	22
✓ Markley (Fintley)		26-27
✓ Robt Smith		31
✓ Geo Sherwin	<sup>Sec 28</sup> TTRF - Bloomfield	36
✓ C. M. Faulkner Dr.		39
✓ Harmon (S. of Kayler's Mill pond)		44
✓ Kauffman	<sup>Sec 34 - 47, 14 - 34</sup> SW of New town	50
✓ Wm Short	<sup>7493</sup> <sup>7525</sup> Monroe Tp	47

Commerce, stake by leaning  
Sugar NW 1/4 tract #21  
N 85 ± E

at 20.09 18" brackys & tree  
old Sugar along 8' North  
at 20.10 & 20.11  
(bearing of W. line tract #21 =)  
N 6 ± W

at 29.82 pass large elm  
in fence line  
at 32.00 edging lake

West line  
Commerce leaning Sugar in  
NW 1/4

S 8 1/4 A E  
at 16.33 SW 1/4 diff  
at 41.30 cut pipe in line with  
fence, W. side of lane  
N.E. 1/4 tr. #21, NW, 15 ft  
S.E. 1/4 tr. SW, 18 "

S. line, with stake N 85 ± E  
at 39.92 old fence row to north  
5 lbs W. of br. fence

E. line — with old fence  
line W. side of ditch  
N 8 1/2 W  
about 18 ± edge of lake  
set stake for line at 17 ±  
with small arch 3", E. 11 ft.

June 25/07  
Meas. along pipe = 38.55 to iron pipe  
at N side of pipe

Line set by O'Donnell

Commence in pole, 1 chain  
W. of & parallel to E. line,  
N 8 1/2 W.

at 8.64 ← 2 1/2" pipe

— N 6 2/4 W —

at 15.14 2 1/2" pipe in  
wire fence

— N 9 1/2 W —

at 23.27 at wire fence  
10 1/2 lks. west of stake  
in fence (i.e. line as intended)

— N 2 1/4 W at 7.90  
~~at~~ 18" Elm, Corner  
tree.

— N 22 3/4 W at 4.83 1 1/2" pipe at  
N. line 40 a  
3.70 2 of NW 2

← N 6 1/2 W (wire fence)  
N 7 W (6-25-07) to 2 1/2" pipe  
7.57 E of Buckeye corner

N 2 1/2 - W (6-25-07)

Tract # 2

Commence buckeye < tree  
at SW < tract & in N line  
tract # 1

N 6 ± W

at 2193, NW < of water,  
3 lbs of 8" wild cherry  
(no buckeye near)

= N line =

N 85 3/4 E

at 370 big rail in line  
at 1400 is far east as could  
go on of water.

The woods shows 1 1/2 ch  
beyond (1550 pines)

5

S line, S 86 1/2 W

This rail is 11.60 from cut marks

The 370 psi set 2 1/2" pipe  
set 1" pipe 12 1/2 lbs w. limit to X

Blair Surv. 1/30/07

Prog N. line N 82 1/2 E  
found stones at NW Blair's  
2600 (N 3/4 Corner) @ at  
SW of Shearer.

stones set by McCormick

at 8.04 pass  $\square$  square stone  
in fence line. set by H. Moore  
as line Blair & Glasgow

at 8.15 stone set by McCormick  
10 yrs ago.

Commence 4 hrs W. of the Hemore  
 $\square$  stone - a meas E.

at 13.90 survey line,  
stone set by H. Moore

13.90  
8

21.90 - NW of Corner to Surv. line.

Blair E. line = 57 2

10

Start stone NW of Blair  
meas W. along N. line Corner  
at 13.29, old bush  
stump, orig with tree  
alex. Glasgow stated that  
he set orig stone between  
bush & oak just SW of  
bush. the two trees were  
so close together that the  
roots overlapped

at 13.31 small 4"  
oak taken as  $\leftarrow$

21.90

8.15

13.75

4

55.00

13.75

4

55.00

Start at Surv. line stone & meas  
W. (check) at 13.73 1/2 stone  
set by McCormick

Sand statement to John G. Blair.

New Richmond Blair

V.M.S. 9971

RICHLAND TOWNSHIP

Meas. W. from spike  
in R.R. 11. 52 1/2 corners out  
14 lks. east of wire fence on  
W. side of road.

Meas. N. along road from  
stake in R.R. 11. 1/2 corner  
out 31 lks. S. of Cent of  
road fence to curb

With scrub apple	N 10 E	63 lks
6" Maple	S 23 1/2 E	40 lks
in SW <sup>4</sup> Fizzie Bello yard		

Ford Thompson  
"Cooney"

} chcr.

Murphy 2/13/07 12

Bearing R.R. N 39-E  
(near 38 1/4)

Dist along R.R. 48.00

N. line N 81 E 4.95 to Cent  
road

Along Cent road S 7-E, 24.11  
to Cent gate (call in 6 3/4")

With Cent gate S 39+W  
at 17.08 S. line of Survey in Cent  
gate

S. line S 82 W, 26.25 to  
Cent gate at Rustland

N 28 W, 2.865 to Cent R.R.

(See next page)

Commence cent. C.S. & C. R.R.  
at cent. of pike at Richland.

— with cent. R.R. N 39-E  
(This bearing road. at 1 chain  
offset from R.R.)  
at 48.50, at S. line  
A.W. Rose 1 acre pc.

— with Rose line, N 81 E,  
4.95 to cent mud road

— with road S 7-E (6 1/4°)  
24.11 to intersection cent  
of pike.

— with cent pike S 39 1/4 W  
17.08 to survey line.  
(Found this line by meas.  
north 8.23 from NE Simpson  
4.70 a. pc.)

— with surv. line, a line  
Elliott, S 82 W, 26.25  
to cent' pike at Richland

— with cent pike N 28 W,  
2.37 to begin at cent R.R.  
= 75.54 acres.



Longbrake Survey  
(Jno. D. Wright 80 a)

Along pike  
commence in line of fence at  
Wright's NW  $\frac{1}{4}$  - fence  
with pike

at 18.26 cont Brandywine

at 20.12 fence line (near)

Meas N & S, through cont of  
Wright's 80 a  
at 10.55 (from S. line) cont Brandywine  
" 20.50 stone in N. line

Along pike N & S (F)

Feb. 25. 1897

S. line -  
commence at stone in S. line  
Wright's  
down cont, at 20.04 cont  
open ditch (ret stone at 20.00 a)

from stone cont N. line of  
Wright's NE  $\frac{1}{4}$  20.02

John Prince  
H. Hodge Longbrake } cler

Figure description of pc North  
of Brandywine, & set  
descriptions to  
W. H. Longbrake  
Care Citizens Bank  
Delmar

Longbrake - Dec 29 - T7R8

Commence cent pike,  
SW  $\times$  Wright, 80 a  
S  $89\frac{1}{2}$  E + (near  $89^{\circ}55'$ )  
at 20.01 cross, NE  $\times$  40 a  
at 40.07  $\frac{1}{2}$  ditch (cent)

- N+W with ditch -

at 6.37 cent Brandyswin  
at 20.04 old fence recognized  
line between Longbrake & Wright  
at 40.28 N. line Sec at NE  $\times$   
Longbrakes 80 a  
(25.14 =  $\frac{1}{2}$  point.)

Bloomfield

19

N. line

N  $89\frac{1}{2}$  W  
at 20.02 stone in line  
at 40.08 cent pike

W. line, with pike

Bearing South (F)  
at 13.26 cent Brandyswin  
at 20.12 place of beginning

## up Brandgroni

Commence 6.07 N. of 83 $\leftarrow$   
 Wrights 80 $\leftarrow$

- S 87 $\frac{1}{2}$  W

at	1.02,	N 72 $\frac{1}{2}$ + W
at	3.77,	N 48 - W
at	8.33,	S 88 $\frac{1}{2}$ + W
at	18.55,	N 81 + W
at	21.91,	- S 79 $\frac{1}{2}$ + W
at	28.39	S 75 $\frac{1}{2}$ W
at	31.96	S 69 $\frac{3}{4}$ W -
at	35.18	S 89 $\frac{1}{4}$ W
at	38.88	S 83 W
at	42.22	Cent Pike

at point 13.26 from NW  $\leftarrow$  Wrights  
 80 new

Sec 15 T7R8  
Elzey Huber Bloomfield

N line, along pike

Commence at mail box in front of  
Pres. Wright's house

Thence meas W. on pike

at 10.31. set stake in fence line

Wright's Wellen

at 50.52 stone in pike NW  $\angle$  Sec 15.

South along W. sec. line

Commence at stone at NW  $\angle$

at 30.02 cent road

Set stake at 40.00

at 40.37 1/2 - iron bar

South line

Set N 50 lbs.

East-

at 40.48 pass 50 lbs N of stake  
near SW  $\angle$  Wright

at 60.49 pass 47 1/2 lbs N of  
Anderson post (N side) set stake in

W. P. Boughman  
Walter Cox } cher 22

offer line

set stake for chain at 60.00  
at 80.90, came out 48 lbs N of  
N. side of anchor post.

Commence, stone SE  $\angle$  Sec 15

E. line of Sec 15

Set E 27 1/2 lbs (cent 18" Sugar)

N 1/4 E

at 40.31 1/2 N. side anchor post  
pass 24 lbs E. of post (80.90  
of last line)

(Set west 2 1/2 lbs)

at 80.63 cent side, came out  
30 lbs E of Amos Lee W. line  
fence (Mr. Lee says on line)  
and 23 lbs S. of S. side anchor  
post

N. line with cent pike  
 start at Wright's mound  
 box & measure across  
 at 983 E end Wright's  
 wire fence (E side another  
 post)  
 at 29.95, bus fence

$$2.5 \times 2/3 = \frac{5.0}{3} = 1.7$$

<del> <math display="block">\begin{array}{r} 80.90 \\ .027 \\ \hline 2 \overline{) 80.927} \\ 40.46 \\ \hline 20.23 \\ \hline 40.48 \\ 40.39 \\ \hline .09 \end{array}</math> </del>	<del> <math display="block">\begin{array}{r} 80.90 \\ .025 \\ \hline 2 \overline{) 80.925} \\ 40.46 \\ \hline 20.23 \\ \hline 40.48 \\ 40.39 \\ \hline .09 \end{array}</math> </del>
--	--

$\begin{array}{r} 3 \overline{) 60.49} \\ 20.16 \\ \hline 2 \\ \hline 40.32 \end{array}$	$\begin{array}{r} 60.49 \\ 20.16 \\ \hline 40.33 \end{array}$
--	---

$\begin{array}{r} 80.77 \\ 60.49 \\ \hline 20.28 \\ \hline 50.51 \\ 10.31 \\ \hline 40.21 \end{array}$	$\begin{array}{r} 50.52 \\ 29.95 \\ \hline 80.47 \\ 2 \overline{) 40.23} \\ 20.115 \\ \hline 60.33 \\ 7.82 \\ \hline 60.33 \end{array}$
--	---

<del> <math display="block">\begin{array}{r} W - 40.21 + 2 = \\ PW - 20.14 - 2 \\ H - 20.18 \end{array}</math> </del>	<del> <math display="block">\begin{array}{r} 80.47 \\ 60.33 \\ \hline 20.14 \\ \hline 40.22 \end{array}</math> </del>
---	---

$$\begin{array}{r}
 50.52 \\
 29.95 \\
 \hline
 1) 80.47 \\
 2) 40.237 \\
 20.1185 \\
 3 \\
 \hline
 60.34
 \end{array}$$

Williamson	40.23
	<u>40.21</u>
move E.	.02

Wright.	60.34
$50.52 + 9.83 =$	<u>60.35</u>
E. line - move W	.01

## Markley - Survey

Clifford McBride  
La Fayette Markley (clear)Commence stone in road  
SW  $\angle$  lane

- Run with W. line of Markley's  
at 20.00 stake for dist  
" 40.00 " " "  
" 40.30 Markley's wire fence  
" 60.00 stake for dist  
" 60.35 wire fence to west  
" 66.20 cont Metz St. Sch.  
" 80.49 corner pt. & K. line Sec.

$$\begin{array}{r} 2 \overline{) 80.49} \\ \underline{40.24 \frac{1}{2}} \\ 20.12 \frac{3}{4} \end{array} \quad \begin{array}{r} 20.12 \frac{1}{4} \\ + \quad 12 \frac{1}{2} \\ \hline 20.24 \frac{3}{4} \end{array}$$

20.24  $\frac{3}{4}$ Set stake at SW  $\angle$  Markley about  
1' S of stone set by H. McNameeLine at run = 5 89  $\frac{3}{4}$  EE. line of Markley  
Commence corner pt.  
(about 300 ft. E. of W. prairie  
joint disk)  
South with E. line

- at 20.11 fence E & W  
at 40.29 W. fence on Markley  
" 60.00 stake for dist on  
N. side of creek  
" 61.00 in creek  
" 80.46 stone in road

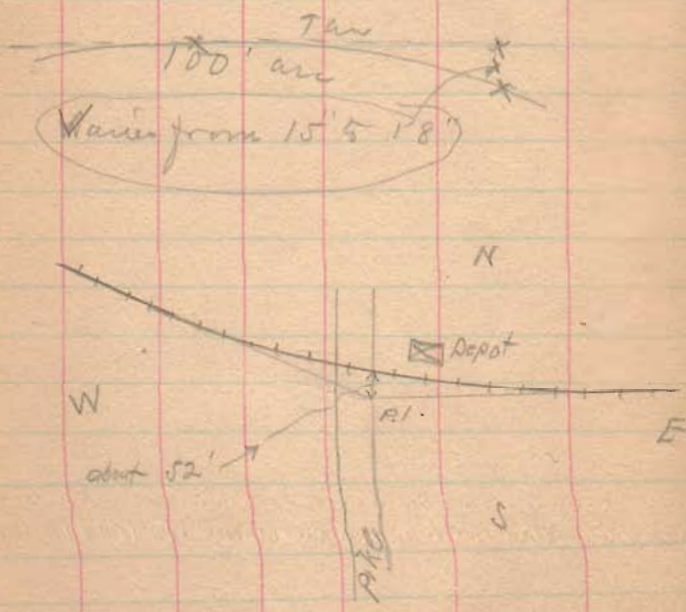
$$\begin{array}{r} 2 \overline{) 80.46} \\ \underline{40.23} \\ 20.11 \frac{1}{2} \\ \hline 60.34 \frac{1}{2} \end{array} \quad \begin{array}{r} 4 \overline{) 80.46} \\ \underline{20.11 \frac{1}{2}} \\ 40.23 \\ \underline{20.11 \frac{1}{2}} \\ 60.34 \frac{1}{2} \end{array}$$

Set stake at 60.34  $\frac{1}{2}$  at NE edge  
of creek (stone set by H. McNamee at 60.35)  
Set stake  $\frac{1}{2}$  road N (60.42)

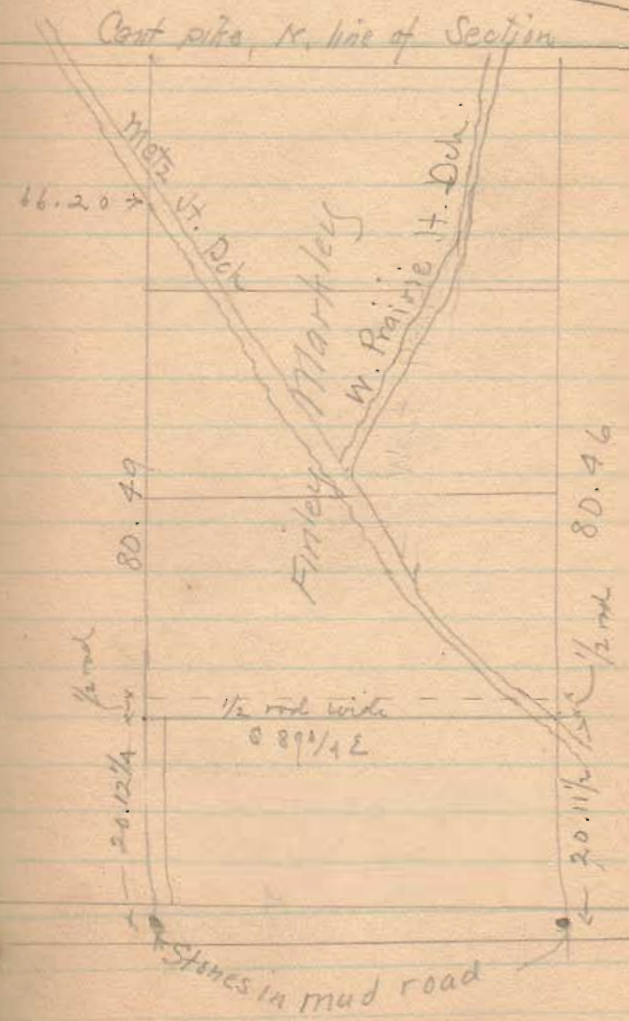
Curve out <sup>and</sup> O.C. at  
Santa Fe.

P.C. about 600' E of pike  
P.T. " 500' W. of pike  
P.I. near E. side of pike  
about 50 to 55' S. of cent  
of track.

Curve irregular, but,  
seems to be about  $1\frac{1}{2}^\circ$



Send statement to  
Finley Markley  
Lake View, R.F.D. #1





Robt Smith Surv. 3/15/07

Line # 1

Commence big stone in Rowlow  
(W of center of road) at 810 <  
Small <sup>(2)</sup> NW < Piatt  
- with N line Piatt

Random N 74 1/4 - E  
at 20.00 stone in fence line  
at 31.22 < in fence line  
- N 56 E, - at 35 ±° < Piatt, W woods  
by boulder - both OK

Line # 2

N 72 E, Random  
at 20.25, 3 oak <  
Oaks all gone, set stone  
CS & OK

Line # 3

N 43 1/2 E  
at 2.79 stone with X

31

Line # 4

N 80 1/2 E  
at 3.98 post at E side  
macrochuck creek

Line # 5 - along E side

creek 66 lbs to corner  
(plus N 9 E)

Line # 6 along N side of lane

at 4.27 set stone N 22 W,  
50 lbs from stone at end of  
line # 3.

S 78 1/2 W

Line #7 S  
 #43 3/4 W  
 at 1.67 boulder at S. of  
 12a pc.

Line #8  
 along 12a pc  
 Random N 44 W  
 at 13.50 Came out 4 ft.  
 W. of stone in block line.

Line #9  
 with Davis line S 32 - W  
 at 11.96 stone with x a SW  
 < Davis; with line 24" thick ok.  
 Columning 8.27 further stocks  
 stone at < Plate <sup>one</sup> Mote -  
 35<sup>00</sup> of line #1.

Line #10  
 with Davis line N 15 3/4 W,  
 at 18.65 < fence, at  
 4 1/2 lbs from Hick 15"  
 (Compute brg. Hick (15")  
 4 1/2 lbs S. along line 2" of 12" east)

Line #11  
 S 78 W (Set S. 8')  
 at 10.41 SW < Davis at  
 3 W.O. <  
 a . . .

at 20.84 pass 17 lbs S. of  
 stone at SW < 27a  
 Set stake for dirt at 4000  
 at 40.66 Ludlow  
 Set make in fence, 8'S  
 (See note on line #16)

Line # 12

Commence at 3 Oaks, at  
10 A of Line # 11  
N 15 + W

at 22.75 cent road

at 25.08, large W.O. stump  
(decayed)

Set large boulder in cut  
old stump.

Line # 13

with Surv. line

S 74 1/2 W

at 10.85 came out 5 ft

S. of &lt; set stone

flat sandstone several  
~~small pe~~

Corrected Coe = 57.5 W

Line # 14

N 16 1/2 W S 16 1/2 E

at 2.55 set stone in cut road  
flat sand stone, 2 small pcs same

Line # 15 with road

S 70 3/4 W

at 19.45 X roads

Line # 16 with Ludlow (2nd)  
Cent road

S 15 E

at 21.64 set stone

at 22.20 set stone

not decided which stone will  
be adopted as <

(Line # 11 produced with come  
at 22.20. Stone 21.64 is

in line with old fence to East.

If 21.64 is decided on, the  
division line will turn from

hook

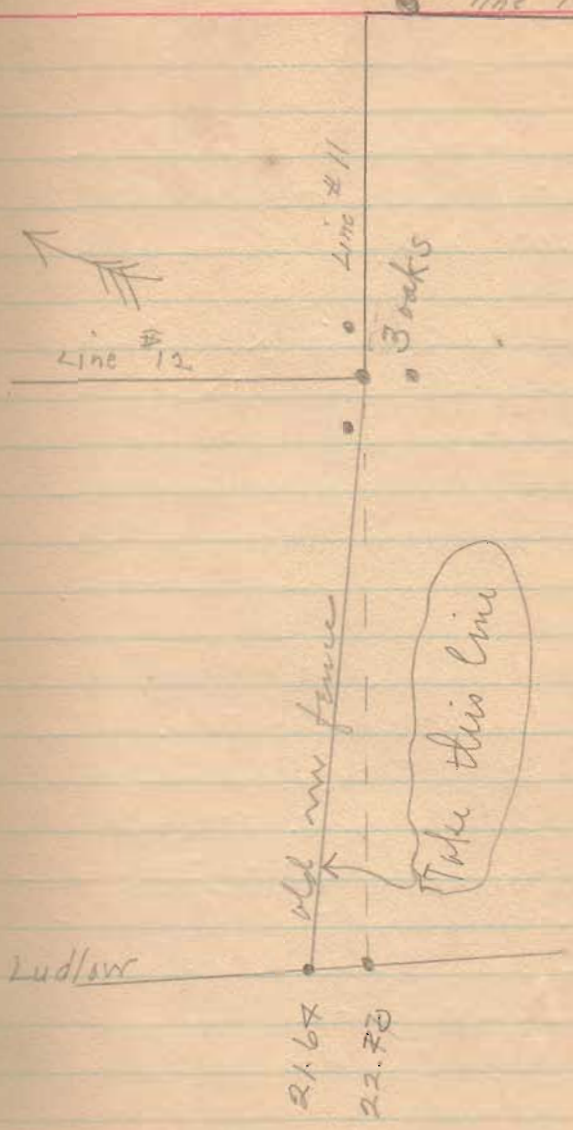
line #10

3 oak  $\angle$ , at 10.41 of line #11.  
Line #11, from 0 to 10.41 produced, cuts Ludlow at 22.20 stone.)

at 46.85 stone at begin line #1

3/19/07

(Division line to run to 21.64 on Ludlow.)



3/23/07

(33.25, above)

35

Re-meas. S. line of 6516

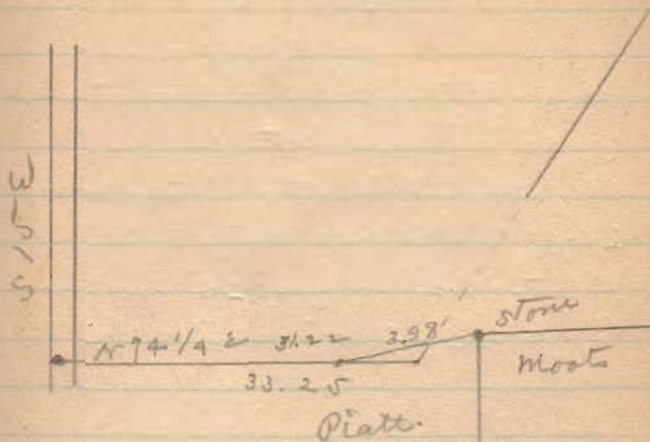
Start at stone in Sudlow  
at 14.78, pass about 30" N.  
of 20" pick. old fence was  
4' S. of this tree

at 19.96 stone with x in fence  
line. SWK orig 50 a

Dug up stone (boulder about  
200 lbs, standing on end &  
planted deep in ground) ~~and~~  
found brick underneath.

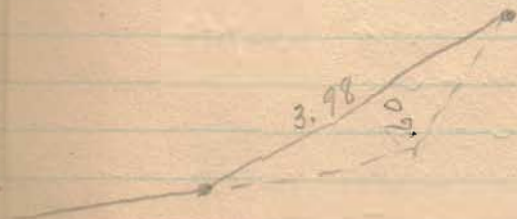
at 13.40 pass 3' S. of old  
W. O. stump, which Mr. John  
Q. Smith states was marked  
by 2 hacks on S. side, ~~and~~  
which he, as he states, Mr. De-  
mead told him to cut a few  
years ago because it was on  
Smith's side of the line.

at 33.25, this line will  
intersect Suway line produced  
882 m, 150' line



Producing line # 9.

at 8.26 pass 2.6 lbs Pegler  
of stone at N 66 W Demmead  
at 10.36 strike line #1  
produced at 33.25 of line #1





Line B.

Line C

Line D.

Set stone at 5.00 ch. brickbats  
around stone. N.W. + Groves <sup>2nd</sup>  
S.W. + Rardon.

Dist: 8.00 ch. Sets niggerhead  
stone with brickbats

Line E

Set stone (niggerhead) with broken  
tile at S. end Line E. at point X.

## Stokes Tpi

C.M. Faulkner Survey

sh } O.C. Pichey  
cr. } Noah Owens

Flag - M. Miller



Faulkner Survey 07

Found stone N.E. 1/4 Sec.  
 Measured west  
 Set temporary stakes at  
 20 ch O.K. Dist. 20.07 ch  
 40 " O.K. Dist. 40.14 ch  
 Found 1 stone N.W. 1/4 Sec. <sup>190 road</sup>  
 Total distance 80.28 ch  
 Set stone. brass tile under <sup>1/2</sup> ground  
 at 20.07 ch. <sup>1/2</sup> to Faulkner <sup>1/2</sup> of Taylor.  
 set on line with section corners.  
 Present D.C.M. Faulkner, F. Taylor,  
 M. Miller, Noah Owens  
 at 40.14 on wooden bridge  
 Drove 3 nails  $\therefore$   
 N. 89 <sup>37</sup>/<sub>4</sub> W



Stokes TP.

Found stone at S.E. 1/4 N.E. q.  
 " " " S.W. 1/4 N.E. "  
 Measured east 40.16 ch.  
 set stone with brass tile  
 at 20.08 ch for <sup>1/2</sup> Taylor <sup>1/2</sup>  
 Faulkner on line with 2 stones  
 above N. 89 <sup>37</sup>/<sub>4</sub> W

Run Line through north  
 set stakes on line

Sec 34-4-14

Apr 10/07

Harmon Survey  
S. of Kayler's mill pond

Beaming Sit. Lake Pk., from  
hill just S. of gas house  
woods, looking E to Fair  
ground X roads

~~S 86 3/4 E~~

S 86 E

Commence SW<sup>1</sup>/<sub>4</sub> Sec 34  
as found from apple tree with  
fence S 86 E

at 20.22 in line with

Harmon fence to N.

Set stake at 20.00

at 27.90 Harmon's E fence

Set stake at 29.00

27.90

20.22

7.68

total =

acres

x 4 = 30.72

30.56

.16

rod.

4 130.56 rods

7.64

Ira Hankinson }  
Claud Kayler }cher

20.18

- dead

30.56

4 150.74

20.18

27.90

7.64

27.82

27.82

.08 excess

.08 excess in 28 d

= .15 excess in 20.18 d

= .02 " " 7.64

fences ok.

→ forked apple, S 28 1/2 E. 55 lbs

E line N 4 1/4 E

at 18.26 Cooperation line

at 21.30 stone N 2 1/4 Harmon

21.30

4

85.20 rods = 20 acres

N line 7.65 to fence  
 & line stake in pond set  
 by Bishop for NW

West Line



Wm Short Surv.

Found stone and brick cor. at X roads  
Wit: 30" bearing Burr Oak, N 77 3/4 W, 22 lbs  
15" Jack Oak, N 2 1/2 E, 43 1/2 lbs

— with Prickertown road S 52 1/4 W (✓)

(A) at 1810 set stone with X. (✓)  
set it on top of flat stone

— N 17 1/4 W,

(B) at 5.00  
set stone with X on top of  
original stone (orig stone 18" deep)

Wit. 13" Walnut N 56 1/4 W 34 lbs  
18" W. Oak N 32 1/4 E, 74 1/2 lbs  
14" Walnut S 18 1/4 E, 84 1/2 lbs

4493 } Mil. Surv. 4525 } Monroe Tp. 47

O.S. Fultz }  
Henry A. Grimes } Ch. Cr.

— with S. line Short S 74 1/2 W

(C) at 1886, cor post, (anchor post)  
at S.W. < Short  
(No old wit found.)

— with fence line (Short w/ Pickets)  
(D) (This fence built in old fence line, and  
long accepted as land line)

N 16 3/4 W  
at 2.93 intersecting  
line from C.

Commence again at stake at  
X roads

— with road N 15 1/2 W (V)

(E) at ~~14.32~~ (near fence S 54 1/4 W  
at 14.32 set stake (temporary)  
in line with fence  
(should be 13.32)

— with fence S 54 1/4 W

Set N. 18' (Random)

(F) at 9.52 D.R. 2° 37' (S 57° W)

at 21.945 D.L. 2° 37'

at 33.02 W. line of Short

(N.B!) These notes are for the 18'  
offset line, no stakes set in true  
line)

(along road at E side)

run N. 30° E further down main

line - making 17.30 from X roads


MW. 14.07

Run N 15 1/2 W, with road  
at 16.50 stake (temporarily)

— S 54 1/4 W (Random)

at 33.43 W. line -

— with W. line S 16 3/4 E 5.09

— N 15 1/2 W - 16.55 - stake also 

W. line, 13" Burn oak N 57 1/2 W 11.8 lbs

16" Burn oak S 60 W 7.8 lbs

— S 54 1/4 W, 33.43 - boulder with X on  
top another

— S 16 3/4 E - 5.14

Kauffman Survey  
SW. of Lewistown.

50

at SW  $\angle$  Kauffman, plant  
long sandstone & pos. 6" drain tile  
Meas. N. along line (W. line Kauffman)

North (mag.) at 14.01, NE  $\angle$  Wolfe  
(stone)

at 29.12 stone, NE  $\angle$  Hughes rd.  
SE  $\angle$  Lew. Plum.

at 41.28 cont. pipe - (about where  
stone is supposed to be)

$$\left( \begin{array}{l} 41.28 - 10.16 = 31.12 \\ 31.12 - 29.12 = 2.00 \end{array} \right)$$

at 31.12, stake for line bet.  
the two Plum Os.

Set S. 50 lbs for Cent. Sec -  
23 T 7 R 8

— Meas. Eastward (18902)  
along Cent. Sec.

20.00 Set stake for dist

at 40.37, found stone cent  
pike at intersection of Cent.  
of road S. part with Plum's  
Set stone on top orig. stone  
with:

$$\begin{array}{r} 2 \overline{) 40.37} \\ \underline{20.185} \end{array}$$

Set stake at 20.185 as  
cent N. line SE Qr. being  
NW  $\frac{1}{2}$  of NE Qr SE Qr

Later set long stone  
& post tile

— Start stone as above  
Meas. Southward (S-O-W)  
at 20.20 found stone  
at SW  $\frac{1}{4}$  Plum's 20a tract.  
no wire.

Commence at this stone.  
continue S. -

at 10.08 set stone  
line Kauffman  $\frac{1}{2}$  Plum W.

at 20.16 in line with  
wire fence to W. at S.  
line of Sec.

Set stone & post tile - at  
West edge of gravel in roadbed  
being SW  $\frac{1}{4}$  Sec 20.

Meas. south through center of  
SE Qr.

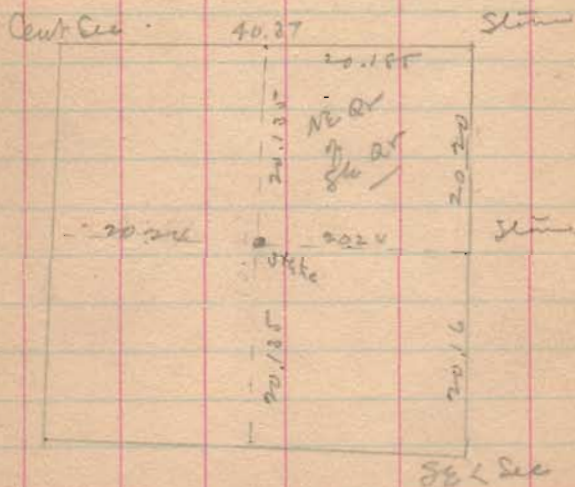
2000 - stake for dist

30.18 stone set

40.27 - S. line Sec.

$$\begin{array}{r} 2 \overline{) 40.27} \\ \underline{20.13} \phantom{5} \\ 20.135 \end{array}$$

Set stake for dist



Start at stone, E. line  
Sec. - at 20.16 W. of  
SE 1/4 Sec.

Meas westward

at 40.98, W. line of Sec.

$$\begin{array}{r} 2 \overline{) 40.98} \\ \underline{20.49} \phantom{0} \\ 20.490 \end{array}$$

Set stake for dist 20.226

at intersection of meas.  
on this page or opp.  
page set stake for  
SW 1/4 of NE 1/4 SE 1/4.