

TABLE for reducing PERCHES to FEET.

Per	Feet	Per	Feet	Per	Feet	Per	Feet
1	16.5	21	346.5	41	676.5	61	1006.5
						81	1336.5

TABLE of Decimal Parts of a FOOT for  
each Inch and Sixteenth of an Inch.

1/16	1/8	1/4	3/8	1/2	5/8	3/4	7/8	1
0.0625	0.125	0.25	0.375	0.5	0.625	0.75	0.875	1.0

- 1
- ✓ Buckeye Port. Cem. Co. Rush 9887
  - ✓ Carter - Heffner
  - ✓ Eliz. Lowry - Lake View.
  - ✓ Chas. V. Waldman
  - ✓ John H. Hornberger, Bellef.
  - ✓ Isaac Alloway
  - ✓ Strayer - Finkle
  - ✓ Dr. Hamer S. of Delcuff
  - ✓ M. A. Detrick.

Buckeye Port. Cem. Co.  
Aug 28-08

670

2

Cse - westward along N. side  
to road - from office  $S82\frac{3}{4}W$   
 $S7\frac{1}{4}E$

Commence pt. - gas pipe in  
W. line orig. B-P. Cem. Co. at  
S. line county road.

Dir:  $30^{\circ}$  Hackberry,  $N9W$ ,  $48\frac{1}{2}'$

Ext. S.E. corner porch, office bldg  
 $N33\frac{3}{4}E$ ,  $67'$

-  $S7\frac{1}{4}E$ , with orig line,  
at.  $469'$  gas pipe

-  $N65W$ ,  $47'$  to gas pipe -

-  $N7\frac{3}{4}W$   $443'$  to the  
S. side of County road

- with road  $N82\frac{3}{4}E$ ,  $412'$   
to begin.

New West Life Ins Co  
to B-P-Cum Co

Commence at pt. railroad rail  
near 20" backbrng.

present case  $\approx 7\frac{1}{2}W$   
old case  $\approx 8-55W$ .

(set off variation to read to  
old case  $\approx 8-55W$ .)

at 9.05 stone at NW  $\angle$  of  
Huffelinger  $\square$  strip.

Miss S.  $76\frac{1}{2}$  lbs  $\rightarrow$  came  
to old fence post, at NW  $\angle$   
of orig B-P-Cum Co land.  
offset S. - 1.73 to pt in  
road to E.

- ~~$\approx 81-50E$  (orig case)~~
- eastward with road at  
22.79 old fence row

4.28  
1.29  
3.89

3

- set W. 12.

S  $7\frac{1}{2}E$  with old fence row  
at 6.5-cent creek.

iron pipe

WT:  $\approx 53W$ , 17" dia, 24 lbs

Double Lynn, 15",  $\approx 11\frac{3}{4}W$ , 26 lbs

- up stream  $55\frac{1}{2}W$   
4.28.

- upstream,  $59\frac{1}{2}W$ ,  
at 13.00  $\angle$  in stream  
at 13.30 end of case as per deed.

-  $510W$ , with creek.

(Creek crooked, these courses  
only approximate)

at 3.89 set iron pipe (temporary)  
set in bank about where line angles  
to W. being 16 lbs from Sun. line  
to cent creek

Continuing this last case, at 2.00 by chain  
in W. bank creek

Pugle tract

Commence at Big Elm on L bank

- with creek  $S 7 \frac{1}{2} E$ ,  
(present case)  
variation at  $0^\circ$

Cse. creek  $S 6 \frac{1}{2} E$

at 24.22 line McAdams

- with N. line of McAdams  
meas from cent. creek  $N 81 \frac{1}{2} E$ ,  
at 3.00 set gas pipe  
(re-set 5 lbs hr)

-  $N 9 W$ , at 6.76 - writing  
11 feet

at 6.71 set iron bar  
grow with tree -  
Walnut, 14",  $N 81 \frac{1}{2} E$ , 26 lbs

6.71 ch  $\div$  11 ft = writing  
on this case

Corrected case =  $N 8 \frac{1}{4} W$

- offset  $N. 12^\circ$   
 $N 81 \frac{1}{2} E$ ,  
at 3.96 iron pipe

Sept. 16-08 Dow Wonders ch

Cse. creek ( $S 6 \frac{1}{4} E$ ) (needs)  
old case ( $N 7 \frac{1}{4} W$ ) ( $1^\circ L$ )  
Start at big elm on W.  
bank of Rust Creek

-  $N 8 \frac{1}{2} E$  with bank  
at 1.32 iron pipe on bank  
old syc. with gum

-  $N 83 \frac{3}{4} E$ ,  
at 6.57 pc gas pipe



- S 6 1/4 E  
 offset E 20'  
 at 18.77 1/2 came out  
 20' E and 4 lks S. of  
 iron pipe.  
 Set this pipe 4 lks S,

17.16 a p.c.

Commence at iron pipe at S.  
end of 19.77 1/2 cre on previous  
page.

- N 6 1/4 W - (present case)  
case. in deed - N 10 1/2 W.  
Set variation to N 10 1/2 W  
& run by st. using orig. course  
at 223 set iron bar  
at 223 + 504.5 set iron bar

Start at last mentioned bar &  
run by orig. bearings

- N 79° 39' E  
at 300.5 iron pipe  
(re-set 10' north)
- N 4° 21' W  
at 769.5 old line fence row  
(set iron bar 10' W)

- 6
- S 87° 31' E  
found this bog. would  
run too far N.  
present case of fence S 82 1/4 E  
at 429.5, W. side st.-of-way  
of Alta track, 20' from  
E. st.-of-way fence

- S 6 1/2 E (present case)  
at 1155' old fence post  
20' from E. line st.-of-way

- S 83 W (present case)  
at 809 beginning  
(20' short of end)

Carter-Heffner Surv  
Sec 30-5-13 Liberty Twp

Found stake in Sec. line  
at S.E.  $\angle$  York  $\times$  S.W.  $\angle$  York  
at S.E.  $\angle$  S.W. of Sec. 30

- westward with road  
at 351.78 line York & Ida Carter N.  
at 5.33 stake set by C.M.R. at  
at 981.44 cor. York & York S. South

1360.92  
at 20.62 stake set by C.M.R.  
at N.E.  $\angle$  of Kauffman -  
This stake is about 6' S. of  
center of road.

Meas. westward along S. line toward  
at 1405.80 cent. pipe  
at 207.1 opp. 15" link, 5' N.  
1306.20

Oct 1-08

84-3-10  
N2+3

C. S. Hawker } de cr.  
Chas York

N line Rose Howell's  $2204.40$   
from stake in road -  $534.0$  =  $584\frac{3}{4}$  E  
 $2748.90$   
 $41.68$

E. line Mrs Howell,  $54\frac{3}{4}$  + W,  $608.52$   
Set  $\frac{3}{4}$ " gas pipe at S.E. Howell,  
with 32" elm N 75 E, 9 lbs  $5.94$

Howell's S. line

at 354.02  
at 5.67 NW  $\angle$  York  
at 620.40  $\angle$  in line set  $\frac{3}{8}$ " iron pipe

- southward  $132.00$   
2' to  $\frac{3}{8}$ " iron pipe  
at intersection of James row  
6" SW, 19"

- N  $84\frac{3}{4}$  W (bearing 36' N)  
at 728.64 located  $\angle$  from rd  
with 18 W. O. Stimp  $559$ ,  $2376$   
at  $(1104 + 2.325) = 1336.5$  set  
stake in James  $\angle$  or NW  $\angle$   
of 16' a. trace.

Meas.  $584\frac{3}{4}$  E, from this post  
223.20  
3' 8.9 set iron pipe.  
also Meas N  $5\frac{1}{2}$  W, 5' 11" set stake  
(temporary) far  $\angle$  toward.

NW 2 8E - 2 3/4  
NE 2 3W + 2 3/4

- Set M. 28' 5 + 3/4 W

at <sup>1435.50</sup> 21.75 (87 ft) small stakes  
run 8' E of line at this pt.

28 + 8 = 36' easting

True line S 5 1/2 - W

at <sup>1443.75</sup> 21.875 set stake

meas S 84 3/4 E, <sup>223.74</sup> 339 set  
in line

stair at row & milk house

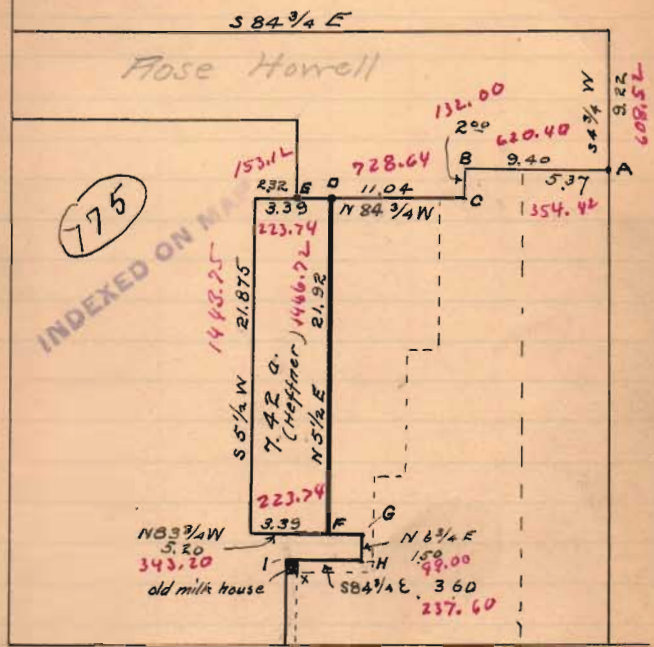
S 84 3/4 E  
at <sup>227.60</sup> 3.60 stake

- N 6 3/4 E. <sup>99.00</sup> 150

- N 82 3/4 W, <sup>343.20</sup> 5.20 to S. end  
of <sup>1443.75</sup> 21.875 line on opp. page.



Carter - Heffner



SW 1/4 Sec. 30-5-1878

- A.  $\frac{3}{4}$ " Gas pipe, 32" elm  $N 75 E$  9.1ks
  - B, C.  $\frac{3}{4}$ " gas pipe in old fence corners.
  - D, F. " " each end of dividing line
  - E. gas pipe, located from old wit. - 18" W.O. stump, decayed,  $S 5 \frac{1}{2} W$ , 36
  - G, H. gas pipe
  - I. gas pipe, N.W. of old milk house
- The 16' ft. of-way correctly located, Deed incorrectly locates milk house at S.E. of angle in lane (shown by x)

Found stone in pike NW 1/4  
Sec 4, from old wit.

Present trees to old wit trees!

Walnut 30" N 25 E, 12.1

Walnut 19", N 46 W, 10.4

Found stake SW 1/4 Sec. 33

from old wit now standing

Planted stone over stake, &

surrounded it with logs soft coal.

NEW big. to old wit!

Walnut, 19" N 7 1/4 W, 7 3/4

Leaving water elm about 20" S 20 1/2 E, 9.6,

stone, NW 1/4 Sec 4, East, 66 + lks.

Start at new stone as set at  
SW 1/4 Sec. 33.

— Eastward, S 89 3/4 E, along road

0+667 stone NW 1/4 Sec 4

3+10 new pike N 2 S

20+30 stone in road, SE 1/4 Smith

22+10 stone on N. edge grade (what  
is it?)

40+71 stone SE 1/4 Lowry, this stone  
in question

Think this stone O.K.

Eliz. Lowery Surv.

Sec. 33-6-8 Stakes Tps.

1 1/2 mi SW Lake View

Nov. 19, 1908

warm - about 50° F

John Archer } ch. or

Hoseo Chiles }

40.71

20.30

20.41

81.64

ch

= rods

16  
60+00 in bridge floor, where  
T.P. ditch crosses from N to S.  
64+51 new wire fence to N.  
74+70 open ditch from NE

81+16 stone set by line NE Sec 4

81+22 fence to N., Mr. Shivelin  
says Sec 4 N. is about 5 or 6  
feet E of this fence.

Nothing found to determine  
the exact location of corner.

If Mr. Shivelin is correct,  
this would make the Sec. cor  
about 81+30

Start at stone, cent. N. line  
 Sec. 33 & meas. Southwest  
 offset W. 15'  
 Random 5 1/4 - E

20+07 line Archer <sup>and</sup> Carpenter E.  
 Rupert <sup>and</sup> Smith W.  
 No stone found

30+09 pass 15' W. of stone NW  $\angle$  ditch

40+11 1/2 pass 13 1/2' W. of stone in pit

56+615 (66 rods from stone to  
 cent. pit) stake temporary  
 Set stake in corrected line

76+33 pass 17' W. of stone in fence

87+65 stone at SE  $\angle$  Lowery  
 pass 11' West  
 Stone & post with  
 stone on top decayed stump

at 40+11.5, Easting 1 1/2' fr.

$$\frac{87.65}{40.115} \times 1 1/2 =$$

$$\begin{array}{r} 87.65 \\ 1.4 \\ \hline 35060 \\ 8765 \\ \hline \end{array}$$

$$40 \overline{) 122.710} \quad | 3.1$$

$$\begin{array}{r} 120 \\ \hline 27 \end{array}$$

$$11 + 3.1 = 14.1$$

\(\therefore\) Easting across sec = 1 1/2'

$$\begin{array}{r} 87.65 \\ 40.11 \\ \hline 47.54 \text{ ch} \\ 4 \\ \hline = 1190.16 \text{ rods} \end{array}$$



Survey for Chas. V. Wellman  
on Huntsville pike

found iron bar in pike from  
24" thick. with, N 5 1/4 E, 40'

also iron bar & stone  
at McCauley Bros pike &  
Huntsville pike.

Cse. Huntsville pike  
bar. these 2 bars S 35 3/4 E, 7.84 1/2  
(old cse S 36 1/4 E  
needle =  $\frac{15}{7}$  1/2° since  
J.C. Warden surv. about 12 yrs ago.

Commence - bar 40' from lude  
N 4 E  
at 7.19 found iron bar 12"  
under ground.

- S 86 E at 5.57 old  
iron bar at w. side lane

N 4 E  
- northward with fence  
at W side lane -  
at 29.85 found old  
rotten stake in Grimes road  
and being 1909 from  
stone at N E & 1/2 Sec.  
(and 1/2 1/2 eastward from stone  
in road at SW < old juv.  
Grimes tract a SE < Gemma  
Horn. Planted large  
boulder over old stake

7.19	7.19
5.57	5.57
29.85	
<u>42.61</u>	12.76
2   42.61	
21.305	
12.76	
<u>8.545</u>	

Wellman  $\Delta$  pc. W7  
Huntsville pike

Commence at iron bar in Hunts-  
& Mc C. Br pike

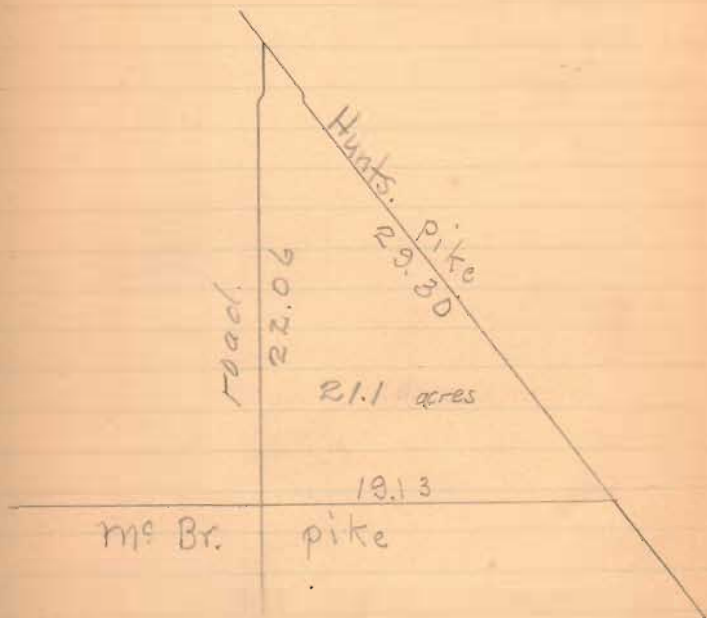
— meas W with Mc Br. Pike  
at 19.13 slope at X roads

— meas. 1 N. with cent road  
at 22.06 Cent. Hunts. pike

— meas SE with Hunts. pike  
at 29.30 begin

No instrument used -  
Measurements only to get approx  
average

C. V. Wellman, chmn  
A. J. Dehn



J. H. Hornberger Surv.

Start meas. at S. line Index bldg.  
Call this 36.0'

54.7	S. line Hornberger brick
64.8	N. line Tom Boyd back shop
104.6	S. " " "
129.6 (near)	fence N. line Huffer
236.3	Quib. N. side chib.

Set S. line Hornberger 7045 N. of N. line  
chib. @ 9445 S. of S. line Index bldg.  
Meas E = 90° - Bar 52 - SE < Hornb -  
at 110.2 - found old fence on line  
at 1/2 way point, dividing lot 173 in  
N x S halves.

Depth Hornberger brick -  
from front to rear S. side = 51'

Mid Examines Bldg S. side 54 1/2'  
Dist E. side Opera to E. side Lot 173 - 109.0' along N  
side of Tom Boyd's old shop.  
Width Opera St. from front Hornberger  
brick to Opera Block 36.5'  
Opera St. - Index bldg to Opera block = 36.5'  
" " found. Huffer re - to SE corner stone 36.5'

Relief - Feb. 3-09

an Chib. = W. side Mad R (15' from  
curb) to SE < Cooper bldg =

255.2
36.5
4) 218.7
54.675
2
109.350

Set stakes on lot 173 thus:



on side side Court St.  
from curb, W. side Mad R. to  
< Opera Block 270.2

36.5	51.5
15	
51.5	218.7

Meas W. from NE < Lot 158  
50.5 = line Index x Exam  
109.0 = Exam. x Miller



Isaac Alloway Surv.  
9947 - Richland Tp.

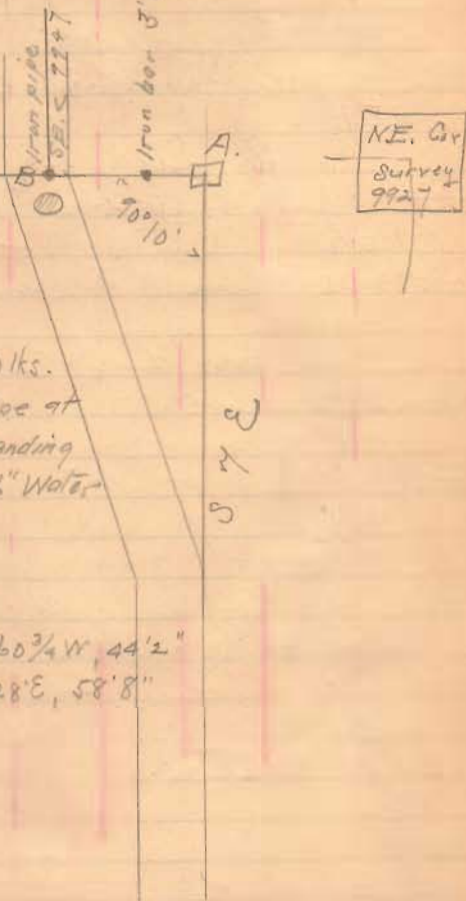
- Begin, bur oak & elm, 20" SE & Surv.  
 - N 9 1/2 W, 18.6 ch. to stone in cent.  
 Hunts - a res. pipe,  
 - with pipe, N 5 3/4 W, 11.92 to stone  
 - S 82 W, 16 ch. to Heron E. line  
 - S 9 1/2 E, 26.75 to S. line Surv.  
 - N 82 E, 23.85 to begin = 60 a  
 Except  
 5 a. out of SE & belonging to  
 Isaac Alloway.

Surv. C. Heron to } 166 - 480  
 Isaac Alloway } Aug 16 - 08

Dusun Latson } 83 - 478  
 Noah Beckham } Sept 1894 PR 9947

- Begin. stone. cent Hunts & Res - pipe or  
 corner Alloway - with 14" shell burk S 79 W, 46 1/4  
 - with N. line Alloway, S 82 W, 25 7/100 p.  
 - N 7 1/2 W, 26 16/100 p to stone. cent pipe  
 - with cent pipe, S 52 1/4 W, 36 5/100 p. to begin  
 = 2 1/10 acres  
 think should be S 52 1/4 E

Record C. p. 270  
 W. A. Gunn  
 Nov 1895



A-B.  
 S 83° 10' W, 80 lks.  
 passing iron pipe at  
 16 1/2 foot. ending  
 2' 7" N. of 36" Water  
 Elm.

WT: at A.  
 36" W. Elm, S 60 3/4 W, 44' 2"  
 40" W. Elm, S 1° 28' E, 58' 8"



Isaac Alloway Surv.  
Feb. 23 - 1909.

Commence, iron pipe, SE  $\angle$  Surv  
9947 - see Surveyor's record C.  
p. 270

= S. Line =  
— S 82 $\frac{3}{4}$  W. with Top. Line  
(Auckland  $\odot$  M = A - ) and  
N. line Dur = S. line Alloway

(this pipe is at E. side of  
road to north)

0+27 - Cent road to north.

28+78 Anchor post set by Dur  
at SW  $\angle$  Alloway

Obs. = 32' offset N. gives us  
S 83 W.

West - Perry Alloway ) Ch. as  
New - Jas Alloway )  
(Chairman ok. no dispute)

= W. Line =

— N 7 $\frac{1}{2}$  W - 4' offset N. 25'  
10+00 stake set for dist in fence line

at 26.74 stone NW  $\angle$  Alloway and  
SW  $\angle$  Arch Richens.

Obs. line = N 7 $\frac{1}{4}$  W

N. line

Start stone as found across  
Beckham =

Offset S. 19' (Red oak  
line W. line for B.S.)

— with rail-fence  
N 83 1/2 E

8+80 - another part SW 2 1/2

Deal gives this line as	
582 W	
W 079 W	46 1/4 lbs
<hr/>	
30	

Pin 30 =	0.50
	46.00
	<hr/>
	2 1/2 0
	2 0 0
	<hr/>
	2 0 0 0 0

this line with stump  
to 2 1/2 lks S. of line

at 15.25 Set iron base  
in pipe

Set pipe 1 1/4" pipe 20" long

This pipe cut by mens 46'  
has been decayed with  
stump and ~~is~~ in line

with stone at NE 2 1/2

a pe. of oak, Beckham  
(and stone in pipe to S)

W. W. old hick stump, 46'  
stone in pipe N 45 W, 9. 14 1/2

Along Hunter's Reservoir

549 E

at 11.91 stone in pipe

B. Pine

5.874 E

18.04



Transcribed notes

= N. line =

Start at stone as found at  
SW $\angle$  Noah Beckham

Offset S. 19' (This comes  
to small red oak - blazed for  
back-sight.

— with Beckham line -  
N 83 $\frac{1}{2}$  E

at 8+80 - anchor post at  
SW $\angle$  Beckham 2 a lot.

at 15+15 set iron bar <sup>and</sup>  
peg. tile in cent. pike.

This corner set by run-  
ning line straight bar. stone  
at N corner Beckham 2 a  
tract <sup>and</sup> stone in pike at NE  
 $\angle$  Alloway. <sup>and</sup> meas 46 $\frac{1}{2}$   
lks. Joint edges decayed  
stump of thick withering tree -  
Wit. stone, cent pike.

N. corner to Beckham 2 a  
N 51 W, 9.14 $\frac{1}{2}$  lks dist.  
(This makes N. line about  
3 $\frac{1}{2}$  lks N. of wit. stump.

N.E. line - along pike.

Commence iron bar as set  
in cent. Hunts. & rev. pike  
— with cent pike S 51 E.

at 11.91 stone in pike,  
pointed out by Alloway's as  
his recognized E. side but  
Beckham's pike to N. is a few  
feet further East.

East. line

Start at stone in pike,  
S 8 $\frac{1}{4}$  E  
at 1.8.04 place of beginning.



Acres = 59.32

Divided as follows -

Spr	30.66
W spr	<u>28.66</u>
	59.32 ✓

Run dividing line - as follows.

Commence iron pipe at SE  $\angle$   
 — with E. line N  $8\frac{1}{4}$  W -  
 at 12.84 =

12.96 Set pipe  
 buggy axle in E side  
 of road

— division line, parallel to  
 South line -  
 S  $83$  W

Division line S  $83$  W = 28.56

W. line = S  $7\frac{1}{4}$  E, 12.83  
 to SW  $\angle$  of tract. 12.95  
 Iron pipe

12.95
<u>12.84</u>
.12

Survey 1 da	5.00
Carfare records	.50
2- descriptions	1.00
	<u>6.50</u>

Def. Alloway or by check	3.25
Sec. Alloway	3.25
	<u>6.50</u>

Alloway Surv. Richland Tp. Surv. 9947

	N	S	E	W	Sub	N	S
N 83 1/2 E, 152.5	1.75		15.15		15.15	26.51	
S 57 E, 119.1		7.50	9.25		39.55		296.63
S 8 1/4 E, 18.04		17.85	2.59		51.39		917.83
S 83 W, 23.78		<del>2.91</del>		2.860	30.38		88.40
N 7 1/4 W, 26.74	26.52 26.53			<del>3.39</del>	3.39	89.90	
	<del>28.28</del>	48.45	16.99	16.98		116.41	1302.86
	28.27	27.27					116.41
						2	1186.45
							57,822

Excess on all lines = 1/2 % (mean)

# Strayer Survey

Pleasant Tp.

July 2 - 1909

Ed. Lockhart ch. cr.  
Geo Hoy

Commence stone in road, N. line  
Sec. 2-1-8 - at SE of Ed. Lockhart.

= Line N21 -  
with N. line Sec 589 3/4 W.

at 14.00	stake (temporary)
at 40.26	stone at NW 1/4 Sec. 2.
at 37.00	stake in line
= = .4% excess	
	36.98
	33.1
	40.29

Excess = .17

at 40.46 big stone with  
boulder & gas tile & bricks on top.

at 37.06 set stone & gas tile, at  
corner Shultz & Hinkle

40.46
37.06
3.40

give Hinkle .09 excess

Line N22 = W. line Sec. 2.  
with cent road

S 1/4 E  
at 40.22 found stone in X roads  
at N. Hinkle, Kraglow, Hannah  
& Hannah  
New unit: 18' Walnut, 55 3/4 E, 46 1/2 W

Excess .22

Line N21 continued  
at 14.00 set long stone & gas  
tile at NW 1/4 Shultz & 1500 W  
Wilson corner

Line No 3

with road,  
N 90 + E  
S 89 3/4 + E or

at 20.12 Stone in road  
at SE  $\angle$  Hinkle  $\textcircled{NW}$  SW  $\angle$  Moon  
& NE  $\angle$  Hannah.

This stone is in N wagon track

20.12 - 20.06 = .06 excess

Line No 4.

E. line Hinkle  
Set W. 10  
N 1/2 + W (N 3/4 W)

at 22.54 Stone in S. line  
Shultz (Strayer)

20.54 - 20.50 = .04 excess



Line No 5

N. line Moore.

Sat 10 10'

S 70<sup>3</sup>/<sub>4</sub> E,

at 6.97 set stone in fence  
line at SE  $\angle$  Shultz & SW  $\angle$   
Wilson Moore

check 2 2/4 lbs from old  
maple (on oak wire) NW,

also wire 12' burr oak at  
 $\angle$  in Wilson Moore, S 70<sup>3</sup>/<sub>4</sub> E  
58 lbs diet (on) NW  $\angle$  of  
Weidinger x 1/4 way, S 70<sup>3</sup>/<sub>4</sub> E.  
55 links.

6.97 - 6.99 = 0.02 excess

Line No 6

Commence N. end of line No 4  
(on) W. end of line No 5.

N 68<sup>1</sup>/<sub>4</sub> W

at 6.74, found old stone  
in fence row. - stone  
leaning - re-set same  
& surrounded with pes.

8" dia

6.74 - 6.71 = 0.03 excess

Line No 7

along line Hinkle & Shultz  
N 34 - W -

at 18+36 Set Stone & pos. tile  
in road at 37.06 of line No 1

H. H. Hinkle,  
Dr. Gruff, R. F. D. -  
Send description & acreage  
Make record for Strayer

Line No 8

Along line Shultz & Wilson Moore  
from E. end of line No 5  
14+00 of line No 1

N 1/2 + W

at 2008 set long stake &  
pos. tile for N.E. & Shultz &  
N.W. & Wilson Moore

Survey for Dr W.W. Hauer  
 (Henderson farm, S. of DeSchoff)  
 Apr. 26-09

Frank Hannah } ch. cr.  
 Harry Carpenter }

Set on iron bar, in cent pike  
 862 Dr Hinkle 20a, B.S. on  
 iron bar in pike at NE & same place  
 - with cent pike producing  
 S 4 1/2 W

at 20.63 intersect S. line  
 Dr Hinkle will drive  
 iron bar at once

- with s. line of above 20a  
 N 86 1/4 W

at 20.12 stone by anchor  
 post at SW of Hinkle 20a



— with W. line Henderson  
producing W. line 20 a — (200)  
with wire fence

54 1/2 W

at 9.95 Stake set for dist.

at N. bank Stony creek

at 20.63 Stake in line set.

for sec. of 4 1/2 a, conveyed  
to Dr. Hinkle - which less 4 a

leaves 3 1/2 a, conveyed,

at 21.04 fence to W, on or  
near 1/2 sec. line.

(anchor post 27' 4" S. of stake, for  
B.S.)

Dr. Hinkle will set iron pipe

— eastward 20.11 to  
Cent. pipe, to point where  
Dr. Hinkle will drive iron bar

20.11

20.12

2 | 40.23

20.115

20.63 =

41.499 acres

## Revelo for Dr. Hamer

4.32 Surf. wet place, Hamer's field,  
just S. of 31 $\frac{1}{2}$  as surveyed to  
Dr. Hamer.

6.00 Top bank at creek

9.10 Water surf. at creek

6.00	9.10	9.10
4.32	6.00	4.32
<hr/>	<hr/>	<hr/>
1.68	3.10	4.78

Dr. Hamer Sew.  
- Continued -

May 19-09

43

Survey of 80 a -

O.C. Richey | ch. con  
A.R. Richey

Start at stake (Dr Hamer will  
set iron bar at once) at SW  $\angle$  of  
above 4 1/2 acre tract as subwyer  
in W. line of Section.

— producing W. line as run  
S. 4 1/2 W  
(Set W. 10 ft.)

at 0+41, Qr Sec  $\angle$ .

Cse. fence to W, N 8 1/2 W

at 8+16 N line of 21 a. po. This  
pt. is 6.19 to fence at NW  $\angle$  or  
6.33 to Walnut

at 2.374 pass 19 1/2 W. of cent of big  
boulder on hill

at 41.71 will fence.

~~Ground pt. with Walnut stump  
near where my cut ought to be.~~



~~Iron stump, set S 50 1/2 E,  
23 lbs (old wire) & came to fence  
line 19 feet<sup>E</sup> of random.~~

~~19-10 = 9' westing.~~

at 41.55, came out 12 ft. W  
of stone with ⊗ on top, which  
Fred Nielsen says was set  
for Sec. 4.

This stone is 16 lbs N. of  
wire fence  
12-10 = 2 ft westing.

— set N 30' S 85 1/2 E  
at 40.31 fence, Eline Newman

at 20.15 drove stake in pike  
about 4' E. of cent. gravel, at  
SE of Hamer.

Dr Hamer will drive iron  
bar at stake

19.85  
.13  
19.98

44

Set with stake E 5 ft.  
also stake in line at W. side  
roadway

— with pike N 4 1/2 E  
at 41.97 SE of  
Dr Nielsen 37 1/2  
at 15.15 Dr. Hamer's bridge

Descriptions of pc. as

Surveyd. Pt. Sec. 5-T.3. R. 13.  
Miami Tp.

Commencing stone with X mark at the  
SE<sup>W</sup> of Sec. 5, T.3. R. 13,  
Miami Tp. L.C.

— with S. line of Sec. N 85 1/4 E  
20.15 to iron bar in Delcraft  
& Antioch pike

— with said pike N 4 1/2 E,  
41.97 d. to iron bar at  
SE<sup>W</sup> of a tract of 87 1/2 acres  
recently conveyed by Dr. Hauer  
to Dr. Hinckley

— with south line of said tract  
N 86 1/4 W, 20.11 ch to an iron  
bar at SW<sup>W</sup> of said tract,  
(and in W. line of said Sec. 5.

— with said Sec. line S 4 1/2 W  
41.55 5 begin =

Buckeye Post Cem. Co.

B.S. on line FE as formerly  
set from wit. at each end  
- N  $5\frac{1}{2}$  W  
orig = N  $6\frac{1}{2}$  W. Var  $1^\circ$  L.  
since 1888 = 21 yrs.  
set variations, place so as read  
N  $6\frac{1}{2}$  W, & then follow my use.

- S  $83\frac{1}{2}$  W, 5.58  $\frac{1}{2}$  set stake  
Set iron pipe  $1\frac{1}{2}$  lbs N. for L

- N  $6\frac{1}{2}$  W set stake N. ditch bank  
N. side road  
Set iron pipe 2' lbs N. for L

- N  $84\frac{1}{2}$  E set stake  
Set iron pipe 2' lbs N. for L

July 1, 1909

O.C. Rechy east

- N  $6\frac{1}{2}$  W - at 3.62 set  
stake from old wit., at L D  
This dist should be 3.59  $\frac{1}{2}$   
 $\therefore$  run s.  $2\frac{1}{2}$  lbs  
Set iron pipe

- N  $83\frac{1}{2}$  E, set stake by R.R. track  
Set iron pipe

- N  $6\frac{1}{2}$  W, 8.76 - set stake at C.  
See 2 pages further on. Set iron  
pipe, splitting digg.

Start at O = railroad rail. wit. OK.

- N  $30$  E 1.83 stake



— 586 $\frac{1}{4}$  W. 0.377 slake

— 530 W, 2.64 slake

— 576 $\frac{1}{2}$  E 5.41 slake

— 56 $\frac{1}{2}$  E 15.03 slake at B

— 588 $\frac{1}{2}$  W. 2.47 slake  
(at 2.52 iron volt supposed  
to be at <.)

— 56 $\frac{1}{2}$  E, 7.05 slake

— 583 W, 1.75, slake

— 56 $\frac{1}{2}$  E, 12.59 $\frac{1}{2}$  slake

— N 83½ E, 5.16½ at C.  
Came out 2 lbs N.E. of  
stake set at C. previous page.  
Split diff. & set iron pipe  
midway bet. these 2. pts.

Liberty  
~~Harmon~~ June 9 '10

M.A. Detrick Survey.  
Pt. NE 1/4 Sec. 2 T. 3 R. 14.

Commencing at a stone at N.E. corner  
of Section.

- S. with Sec. line 40.305 ch. to a  
stone at S.E. corner of said 1/4 Sec.  
Passing S.E. corner of Roth's 2 acre  
tract at 5.514 ch.
- West with S. line of said 1/4 Sec.  
13.41 1/2 ch. (53 3/8 P.) Crossing old line  
at 13.26 ch.
- N. with line between Detrick &  
Harmon. 25.00 ch. To center Car-  
liste Pike as near as could locate.
- N.E. with Carlisle Pike 12.25 Ch.  
To S.W. cor. of Dan'l. Roth's 2<sup>nd</sup> Tract.
- E. with S. line of Roth's 2 acre tract  
5.614 ch. to Roth's S.E. corner at Sec.  
line, and being 5.514 ch. S. of the  
beginning.

49

Earl Löffler } Chain  
Ed. Burkhardt }

