

"2" Start at T 5000 Hoover Land

or 7⁰⁰/400 with N. line Hoover & line Peoples
1683 to T at 10 mile 12' post end of mile fence
E of Hoover & Hoover E of N. line Jan. A. Peoples.

"3" Start at T 1000 Hoover Land
On 10 mile Hoover 911' to E line of Robert Hoover
at 911' drove T 30' N of line as shown E
in N line Daniel Hoover farm
East line Geo Hoover set. 1676.

" " " " " " 1667.

With above &

Beech 20" S 70⁰⁰/49 31.9'

N. Elm 20" S 65⁰⁰ 52'

at 2180. set T & line of Robert Hoover.

at 6" S of end post of mile fence

with B. Tal 10" N 82⁰⁰ E 18.6'

N line Robert Hoover 1269

at 3270. set T & Daniel Hoover land

in cent Patterson pipe

Start at T & Robert Hoover's farm

Beech S 7⁰⁰/49

900' out T

fall 24' E of T on Survey line

Start at T 2000 on line a

East 150' to T Robert Hoover E of Daniel Hoover

With Beech 24" N 49⁰⁰ 27.7'

Shel Hick 6" N 49^{1/2} 37.7'

S line Robert Hoover 1269

E " " " 1668.

Start at T 1000 on line a

Run west 89' to T Geo E of Robert Hoover

With Elm 15" N 47^{1/2} E 36.8'

" Shel Hick 8" N 74⁰⁰ 53.3'

S line Geo Hoover 911'

E " " " 1676.

S line Daniel Hoover 1088.5'

or " " " 1090.

D. B. Smith Surv.

Evidence. One day.

T. B. Wilgus, owner. testified viz
How long have you been acquainted
with this mill dam & surrounding land
since I was a boy 11 years old am now
102 years old.

What do you know in reference to the
old one Wilgus north line and this
mill dam.

Well I know within a few feet of where
the line was claimed to by both parties
at the dam.

Can you locate that line at the dam.
Think I can. come close to it, the line
was just about that stake. (stake in or
end line R and in line N^o 2) in making
this excavation to get mill dam we went
a little beyond the line. (Excavation made
at end of stake), Was there a fence from
north end of dam west to Wilgus line

yes, and was supposed to be on line
At what time was this work of exc. done
About 40 years ago.

Was there more than one timber built
on this dam. Yes there was.

How many? There was one here
(at dip. on line N^o 2) and think there
was one here (at dip. 40 ft. line R)
this last was built after I left a quite
while on the mill.

Can you locate 1000 ft. of old mill. Can
crawl over it. This sill of mill
is in the north line of mill and there was
a stake 7 1/2 feet N of & out by it. How many
were you ever present at any line of
Wilgus line. No was not.

When was mill built. do not know but
mill & timber dam was built previous to
1850.

When was temporary dam rebuilt do it
was between 1825 & 1830.

What changes have been made in this dam since 1840. Both the tumbles at north end of dam was put in since 1840. What do you know of chan of creek at Wilgus cr. line.

Chan. has moved north about 1/2 mile at this time since dam went down do not know when chan was before dam was made.

What do you know about chan of creek at this point (2 S. S. line 2) creek here has changed north about 3/4 mile.

John S. Wilgus says

Can you locate course of old saw mill. Can not position. But best of my judgment it is about that sill at stable out by T. R. Wilgus.

How long have you known this dam, since 1835 am 65 years old. Can you tell the changes made in this dam since 1840.

Both the Tumbles have been made at north end of dam since 1840. Can you locate the original bank of creek at ^{near} S. S. of dam.

The creek bank ran parallel to dam from 1/2 mile nearly to mill say within 200' S side of mill, this bank was the bank of creek before dam was built, and the dam was built on bank of creek and east side of channel.

Can you locate the north end of

the dam as constructed by Jell
 the 22 dam as made by the Jell
 was here (9 links South of 22 line R
 and line 22-2.) the Jell was intended
 to be on a level to meet this fault
 Can you locate the old Jell B. Wilgus
 line at the dam.

Not exactly. this line was originally
 made to run straight through
 from the east line of Survey to
 west line of Harrison and line
 run parallel to the north line of
 Smith 1st a (old Bishop's line)
 from Smith's 22000 would be three
 Wilgus lines but run when it will
 do not know where it crossed the
 dam. When was this line from the
 east line of survey to Harrison's
 augmented. By Mr. Arthur when
 he blocked out the dam.

those three fence west from 22
 dam. Yes and this was called the line
 or line Wilgus

What do you know of the channel of
 creek at Wilgus W. line
 chan has changed to north about 1 1/2 rods
 at this north turn. since dam and do
 not know when chan was before dam
 was made

What do you know of chan at this
 point (2800 line 2)
 do not know much about it; it has changed
 east to west much, but has changed
 about 1 rods north

David Hairman

What knowledge have you of
chain at or near oridge.

chain has not changed much since
I know it has changed ^{not more than} 1/2 foot
north at this time. have known
it for 20 years, am 43 years old

what do you know of chain ^{point} at this
point (28.00 line 2.)

Don't know much, but has changed
north about 10 feet.

Era Gorym

What do you know of creek at the
point (28.00 line 2)

creek in my recollection has changed
its chain north 8 or 10 feet

Western Add to Bellefontaine

Vol. O. page 330 & 331. L. to Rec.

14 lots in NE & NW 1/4 Sec 34.

Beg at post S 2 1/2 or 30 feet & N 87 1/2 or 11 feet
from NE & said or Sec 34 & lot 1
Lots 1 to 7 front on Bellefontaine & Port Jeff
Five Pike each 55' wide and extend
south 237' to an alley 20' wide

Lots 8 to 14 front on a space 60
wide being an extension of Bellefontaine
and are 55' x 220'. Alleys 11' except
1 alley 20' wide at rear of lots.

A stone is placed S 87 1/2 S from the
NE & lot 7 and a stone S 87 1/2 E 11 feet
from S 2 & lot 14.

A. A. Harrison, May 2nd 1845.

Vol. O. page 330. Logan Co. Records

The annexed diagram represents 14 lots laid
out in the NE corner of the NW 1/4 Sec 34
T 4 R. 14 M. R. S. called "Western Bellefontaine".
as follows. Beginning S. 2 1/2 or 30 feet and
N 87 1/2 or 11 feet from the north east corner
of said quarter section. In the NE corner
of lot N=1. Lots N=1 to 7 inclusive are laid
off fronting on the Bellefontaine & Port Jefferson
Five Pikes, and running north with its course
N 87 1/2 or 55 feet each and extending back
at right angles 237 feet to an alley 20 feet
wide. Lots 8 to 14 inclusive front on a space
60 feet wide being an extension of Bellefontaine
street westward and are 55 feet front by 220
feet each. The alleys are each 11 feet wide
excepting the one at rear of lots which is
20 feet wide.

Saul Workman Surv.

Nov 1 - 1886.

J. E. Travis }
 Samuel Bayles } get an iron.

Find large mig bed stone 15" \angle High 18" old \angle stone or 17 3/4 or 14 1/4 linksAug 30" down old \angle stone S 25 1/2 E 14 1/4

Aug 9" S 88 1/2 E 60 1/2 links

Line A

Start at above stone

with down line about N 82 E. or 82 1/2

Set stake at 30.00

51.04 Stone N E \angle Saul Workman

Little oak, N. O. 24" S 16 1/4 W 17 links

Red Oak 25" S 77 3/4 E 41 1/2

at 29.87 set stone \angle Milroy & Workman in
center fence "a" / N line Surv.

with Red oak 24" or 78 E 21 links

Aug 10" S 51 1/2 E 41 3/4 links

Line B. Start at \angle Milroy & Workman
S 9 E Raul.

10.00 set stake in line .0426 set wood to line

20.00 " " " .084 " " "

30.00 " " " .126 " " "

40.00 " " " .168 " " "

50.00 " " " .210 " " "

25.61 center pike on over line

25.80 planted stone on S side road

one bed 10" x 15" x 9"

16.70 Pige side N. O. 20" di

18.85 Red oak 20 line tree

Line C. Start in N line Surv.

25.81 E

51.25 E line Saul Workman

Set stake \angle S and $\frac{3}{4}$ Jms Workman in
 E line J.E. $\frac{3}{4}$ W $\frac{1}{2}$ Milroy
 Pit alk 18" S 60 E 4 $\frac{1}{2}$ links

Set stake \angle S and $\frac{3}{4}$ Jms Workman
 \angle Jms Workman
 Pit Blk oval 5" or 8 $\frac{1}{2}$ E 5 $\frac{3}{4}$ links
 also Blk oval 20" or 5 $\frac{3}{4}$ E 11 $\frac{1}{2}$ "

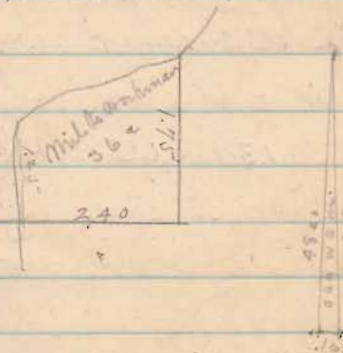
Line D. Start at above S E \angle Milroy
 or 8 $\frac{3}{4}$ W with line Milroy $\frac{3}{4}$ Jms Workman
 8.71 above \angle S and $\frac{3}{4}$ Jms Workman in
 E line Milroy
 12.50 set \angle Milroy $\frac{3}{4}$ W Workman on
 South Bank Sulphur ^{along} branch

Line E.

Start at stake 12.50.
 5.71 $\frac{3}{4}$ or on main line Milroy $\frac{3}{4}$ W Workman
 2.40 cent checker creek chan

3.16 post made old \angle Milroy $\frac{3}{4}$ W Workman
 2.80 pass 48.00 on line B.

24
 15
 120
 24
 360



3.00 set line stone 30" x 12" x 3" for corner
 \angle Milroy and Workman at 48.00 from
 N line corner and 20 links W of line
 B.

Pit Black oval 20" on N Bank creek
 3.5 $\frac{3}{4}$ E 6 links

also 20.00 set on S Bank creek S 71 $\frac{1}{2}$ E 13 $\frac{1}{2}$ links
 also South Red Oak 24" S 62 $\frac{1}{4}$ or 23 $\frac{1}{2}$ links

corner of main line milroy $\frac{3}{4}$ W Workman 3.8 $\frac{3}{4}$ E