

TABLE for reducing PERCHES to FEET.

Per	Foot.	Per	Foot.	Per	Foot.	Per	Foot.	Per	Foot.
1	105.5	21	3,465.5	41	6,765.5	61	10,065.5	81	13,365.5
2	331.0	22	3,693.0	42	6,930.0	62	10,230.0	82	13,530.0
3	495.5	23	3,792.5	43	7,095.5	63	10,395.5	83	13,695.5
4	660.0	24	3,903.0	44	7,260.0	64	10,560.0	84	13,860.0
5	824.5	25	4,125.5	45	7,425.5	65	10,725.5	85	14,025.5
6	990.0	26	4,290.0	46	7,590.0	66	10,890.0	86	14,190.0
7	1,155.5	27	4,455.5	47	7,755.5	67	11,055.5	87	14,355.5
8	1,320.0	28	4,620.0	48	7,920.0	68	11,220.0	88	14,520.0
9	1,485.5	29	4,785.5	49	8,085.5	69	11,385.5	89	14,685.5
10	1,650.0	30	4,950.0	50	8,250.0	70	11,550.0	90	14,850.0
11	1,815.5	31	5,115.5	51	8,415.5	71	11,715.5	91	15,015.5
12	1,980.0	32	5,280.0	52	8,580.0	72	11,880.0	92	15,180.0
13	2,145.5	33	5,445.5	53	8,745.5	73	12,045.5	93	15,345.5
14	2,310.0	34	5,610.0	54	8,910.0	74	12,210.0	94	15,510.0
15	2,475.5	35	5,775.5	55	9,075.5	75	12,375.5	95	15,675.5
16	2,640.0	36	5,940.0	56	9,240.0	76	12,540.0	96	15,840.0
17	2,805.5	37	6,105.5	57	9,405.5	77	12,705.5	97	16,005.5
18	2,970.0	38	6,270.0	58	9,570.0	78	12,870.0	98	16,170.0
19	3,135.5	39	6,435.5	59	9,735.5	79	13,035.5	99	16,335.5
20	3,300.0	40	6,600.0	60	9,900.0	80	13,200.0	100	16,500.0

Entered according to Act of Congress, in the year 1866, by James W. Quinn & Co. in the District Court of the United States, for the Eastern District of Pennsylvania.

TABLE of Decimal parts of a FOOT for each Inch and Sixteenth of an Inch.

IN.	0	1	2	3	4	5	6	7	8	9	10	11
0	009	083	167	250	333	417	500	583	667	750	833	917
1	005	089	172	255	339	422	505	589	672	755	839	922
2	010	094	177	260	344	427	510	594	677	760	844	927
3	016	099	182	266	349	432	516	599	682	766	849	932
4	021	104	187	271	354	437	521	604	687	771	854	937
5	026	109	193	276	359	443	526	609	693	776	859	943
6	031	115	198	281	365	448	531	615	698	781	865	948
7	036	120	203	286	370	453	536	620	703	786	870	953
8	042	125	208	292	375	458	542	625	708	792	875	958
9	047	130	214	297	380	464	547	630	714	797	880	964
10	052	135	219	302	385	469	552	635	719	802	885	969
11	057	141	224	307	391	474	557	641	724	807	891	974
12	062	146	229	312	396	479	562	646	729	812	896	979
13	068	151	234	318	401	484	568	651	734	818	901	984
14	073	156	240	323	406	490	573	656	740	823	906	989
15	078	164	245	328	411	495	578	661	745	828	911	995

Entered according to Act of Congress, in the year 1866, by James W. Quinn & Co. in the Clerk's Office of the District Court of the United States, for the Eastern District of Pennsylvania.

Smith-Lowry Runway
 Gross
 Brighton
 Jp. road at Northwood Cem.
 Hammond Runway
 Callahan-Doan

Smith & Lowrey Survey

Broke handle off of chain ran with chain 99.00 ft
 Line A. Start at stifer
 SW sec cor set by Bushong
 thence with road on south
 line of sec. set stakes at
 200 ft - 1897 1/2 E

at 81.03 found remains of old
 stake from Elm stump & oak
 stump SW sec 33 see
 field notes for bearings
 set Red oak stake 36" long
 in grade of road -

our line ran 6.6 south of
 corner

witness to sec 4 -

bur oak 6" 56 1/2 ft 60 lbs

double maple 10" 189 1/2 71

set stake < to Smith & Arthur

at 20.25 3/4 in corrected line

Wit: Elm 12" 52 1/2 ft 86 lbs

Ash 6" 185 1/2 ft 77 lbs

March 7, 1893

Line B.

Random 1 1/2 ft set east 5'

for east line

but 17 ft by oak tree

set west 1/2'

set stakes (30.45) 30.16 ch

set stake in road (47.98)

47.51 ch

Line C. ran from stone

line of SW 1/4 sec 33

1897 1/2 E at (20.33) 20.13

stake set in end of line B -

(40.85) = 20.46 at corner stone

N.E. corner to SW 1/4 sec 33 -

20.13

- 20.22 1/2

20.13

stone

set stake for corner Smith & Lowrey at
 20.22 1/2

$$\begin{array}{r} 9.5 \\ 66 \\ \hline 570 \\ 57 \\ \hline 6.27 \end{array}$$

7.00

6.27

.73 ran too far east

$$\begin{array}{r} 30.45 \\ \hline 47.51 \end{array} \times .73$$

$$\begin{array}{r} 30.45 \\ 73 \\ \hline 9135 \\ 21315 \\ \hline \end{array}$$

$$\begin{array}{r} 47.51 \overline{) 22.228567} \\ \underline{19.004} \\ 3.2245 \end{array}$$

set west at stake on line 13 -
at 30.45' - .47 ft = 5"
ran line by that 7' to west
and set back in line

47.51

33.67 1/2

23

23.44

Set stake for S112 to Lowry
in West line of Taylor road
at 2408 chains from the S112
to track.

Gross Survey.

Line "A": start at point for
S & K sec. 9 - in field set
by fence - set stakes 10' south
and 10' north

Zachary X road - 13.68 ✓
Mississippi Bridge center
19.21

made notch on bridge floor at 20.00

set stakes each side of road at 40.00

" " " " " " " " 60.00

at 80.97 came out at stone

S & K to SAC 9

$$80.97 - 2\frac{1}{2} = 80.74\frac{1}{2}$$

March 31, 1893

Line "B" on west line sec. 9 -
set east 20' at 15.00

at 40.00 set stake in line 20' west.

continued by bearing

set stake at 60.00 set west 20' to line

set west 10'

set stake in line at 80.00

face old fence line at 80.34

~~17.74
34
52.08~~

set stake in line at 80.34 line of
an old road could find no
marker for true sec.

Random line to on north line

Sec. 1 & 8 1/2 &

set south 3'

" " 3'

" " 4'

" " 3'

at 20.00 set stake in line

as run 15' south

set north 10'

set south 10'

" " 6

" stake 39.98

" corner stone face

8' 4" north of stone

Total Northing of line to have

27' 4"

N 88° E

May 11 - 1893

char. Manchippie 47 to 50'

set south 12' at creek

set stake at 51.00

set south 10' at east side of

pike -

center pike at 58.41

set stake as running at 61 -

run 37 1/2' north of oak stump (line 11A)

at 77.42

set stake at 80.63

total Northing 54' in each set stake

in line at this dist -

$37 \frac{1}{2} + 3 = 40 \frac{1}{2}$

Total Northing entire line 81' 4"

Line D" east sec. line -

ran from random stake N 86 sec -

South -

set stake in line at 20.00

set each 1 ft to axis tree

came out 3' west of stake

set by myself from Lyon

tree 742 ft 30 lbs blocked

this tree out and found old

engraves - (total wading 4')

at 40.09

set east 16' N 87 1/4 E 30 lbs

Plumberry 8' N 70 1/2 E 30 lbs

set east from this stake 16' east

and from begin of line "A"

running south this makes

line between Rogers & Wright 0.11

at 60.29's center pike

Bill Duckworth came after

Dinner and dug out < stone

2 1/2 lbs west end point for starting

On line "A"

589/211

at 20.23 1/2 mid line of quarter

" 40.47 " " " " "

set stakes on each side of pipe at
this point 15 links from center

Line "E"

on Mid line sec

North - start in center of pipe
on S. line sec.

at 40.16 set stake - Band
for mid of Sec (corner 10th north
and 19 1/2th west) Brass sec

at 60.24 set stake

set east 24'

came out at 80.02 this is
corner by North on north
line -

80.02 - 20.26 - 20.39

Came out 63' east total easting
39' east (O.K. Sec)

set west at 60.39 - 29 1/2' of Sec

" " " 40.26 - 19 1/2'

(at Brass 4th set north 15' line
and west 29 1/2')

Tit: Grove SW² Maple 4"
N 13 1/2° E 24 1/2' lke
Elev 8" N 17 1/4° 33 1/2' lke

Tit: Grove NW²
Elev 10" N 36 1/4° 59 1/2' lke
Red Oak 8" N 19 1/2° W 78' lke

Random line N. line of Grove -

↳ Billy Wright

N 21 1/2° E

set north 6' just east of fence.

set stake at 20.26 - 8' north

came out 7 1/2' north of
stake set for middle of east
line of NE 1/4 at 20.07 1/2 from
NW² sec. Northing 1 1/2'

on same random line set
pole 8' north of stake in east
line of sec -
and set stake 8' north of
west end of this line worked
into line at middle -
N 89 1/2° E center measured
at 20.26

Random line between Billy Wright
& Lewis Brown.

S 1 E 20.09 set stake this

24 lke to far east. & corner on edge
of park on Mucknuff's fence

Measured to it & cor. of 25 1/2'
of sec. 20.26

Tit: Red Oak 24' S 86 1/2° W 72' lke

... Burn Oak 24' N 72 1/2° W 83' lke

Craigton Survey June 8, 93.

Milligan Craigton } chbr.
W. Craigton }
J. L. Craigton W. W.

Line A. Start from old corner
stone at SWK to Craigton
in Huntsworth place -
set east 9 ft.

A 8 1/4 W

Came out 6' 4" east total
easting 2' 8"

Came to stake set by H. C. Moore
at 38.07-

Line "B" on North line -

A 8 2 1/2 E

set south 9'

at 24.85

Came out 27' south from
said by Craigton to be where
Walnut tree stood -

total southing 18'

Marked place on stone with
an ax -

Line C.

S 39 1/2 E 11.06

Came out 4' west of Legum
Tree (double) O.K. Car S 39 1/2 E

Line D.

A 66 1/2 E

0.35 oh came out in
bed of creek could not set
stake on acct of stone -

Line E -

536 1/2 E from end of Line D -
4.20 to center of pike -

June 15. 1893 -

Measured from line of Main
St. in Northwood for
South line of Northwood
- center of Walnut St.
Thence measured from
this point to line to run
by drainage end of line
"E" 874

Line F. N 41 1/2 E

3.73 to SW \angle to Brooke -

Line G. N 85 E from

Brooke SW \angle 14.60 1/2 to
center Bellefontaine pike -
Set 5" drain tile in center of pike
SW \angle to Brooke

Line H -
with center of Bellefontaine
Pike S 91° E
13.47 set stake and
5" tile

Line "I" set south 9' from
line S 82° W 32.45
came out 118' south of line
as marked for new road.

Line J. Begin at stone line A -
run with pipe N 46° E 18.00

Line K. N 44° E
at (12.0) 3.07 1/2 ch set stone in
road to H.A. Brougher

set another stone at
4.97 for south line J. L.
Brougher -

at 23.13 came out
at end of line S.

Line 5.

Ran from \angle to H.A. Brighton
N 8 1/4 W for 500' line -
Set stake at 935'

set stake at 2537

" " in line at 2544

Came out 7.57 from N 30 \angle
to Creek

Township Road -

at Northwood Cemetery
in ME Arthur Township -
Thomas Cook

D. S. Brooks - } Viewers

S. S. Rogers }

Milligan Crichton } chas
William Crichton }

Commence in center of Northwood
& Huntsville Pike and 25'
south of J. S. Crichton's land
thence N 82 1/2° E parallel
to said Crichton's line
8.15 1/2 chains to the west line
of the Mt Genera Cemetery -
and end of this road

Send report to D. S. Brooks
Huntsville

Hammond Survey

Feb 21 - 1894

Start at corner to Hammond
160 acres -
bearing of road N. of H. -
East

Line A" $S\frac{3}{4}E$
Set east 8'

" " 5'
Set stakes in this line at 40.00

at 80.64 corner post to claim
Mustangs field S & W to farm -
At 80.95 center of dirt road -
" 81.00 opp place Jacob Longbrake
said corner stone should be - [Mallock
did not find stone on account of breaking
came out 30' east -

80
13
17

Line B. Start from stone S & W
to Lockhart - N 3/4 W
Set west 2'
Set stakes at 80 & 81 -
also stake in line as run near
at corner Lockhart N E -

Center gravel in H & S - P. Co
80.68
Set stake south side gravel
at 80.55 -
Set stake north side of road
at 80.50

Oct 11 - 1894

At S.W. & Hammond 40.50 corner in
ditch about 5' south of center of
old rail fence

Set north on this line 15'

At S.W. & Hammond old
stone at 40.22 -

set at 40.34 and set north
15' and ran through on that
line - measured to fence at
each "out" -

		South
0	17	
10	13' 5" + 5" =	14' 1" - 11"
20	8' 9" + 10" =	8' 7" - 6' 5"
30	12' 7" + 15" =	13' 10" - 1' 2"
40	5' 7" + 20"	7' 3" - 7' 9"

~~50~~
~~60~~
~~75~~

At Kansas fence 40.22

Found Stone S & W. M. Stein
31 links south from corner fence
post - correct length of west
line $8064 + 31 = 8095$
 $\frac{1}{2}$ dist $40.47\frac{1}{2}$

The $\frac{1}{2}$ dist on west line
comes south of the end of rails
of remaining corner of old fence
& and in the bottom of the
ditch Lockhart has cut along
his north line & Hammonds
south line -

on line between Hammond
and Lockhart 80 rails at standard
61 rods wire & 19 rods rail -

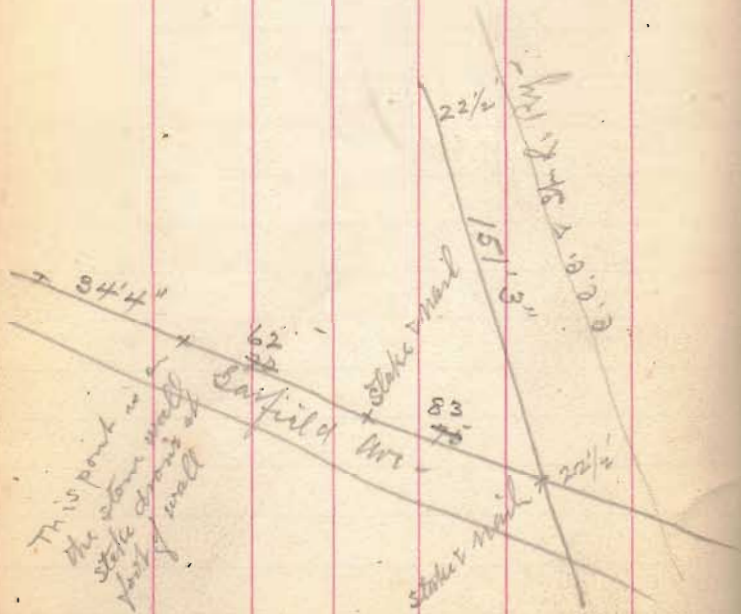
Found Stone in N. x S. Pike-
at Hammonds N.E. in center of
pile at 80.68-

My old line came out
4" west of stone -

This Stone is in line
with Hammonds east fence
and 16" below top of gravel -
set 2" tile on top of stone -

J.R. Gardner's Add-

Garfield Ave front of E lot
75'
Middle lot 70'



9' 8 1/2

March 3 & 5 - 1894

22 6
9 - 8 1/2
12 9 1/2

Back end of lots -
West lot $\sqrt{59}$ - middle
lot 62 -
east lot $14'3''$

line between east lot and
mid lot $120'7''$

line between mid lot &
West lot $121'2\frac{1}{2}''$

Iron Survey

Line "A" start at stake set for
Survey \angle at X road
stake at west side of Lima Pike
as shown by Hallard Elder
S 82 $\frac{1}{2}$ W

set stake at 25.00 for \angle to field
on south.

Came out 14' 5" north of stone
in road - at $\frac{46.72}{5.71}$ S.K. Cor - S 82 $\frac{1}{2}$ W

Corner at "A" found stone 2 $\frac{1}{2}$ lbs
north and one link east of stake
as set.

Line "B" with west line set
16' west from \angle Stone
N 7 $\frac{1}{2}$ W 24.58 set stakes.
set 2 - 3 inch tile

March 13 - 1894 -

Line "C" on north line of farm
ran by line stakes to
set north 14'

set stake for N 7 $\frac{1}{2}$ W to Chick
N 82 $\frac{1}{2}$ E

~~set north 6'~~

at 17.81 elm tree marked
for line.

Line "D" on same line -
as "C" N 82 $\frac{1}{2}$ E

set stake at 46.00

at 46.64 set stake for \angle
in east side of fence grade

28.19
.64
28.83

Line "E" on East line - line
runs on east side of fence
N 7 $\frac{1}{2}$ ° W from stone S & E
Survey at 24.73 stake at
end of line "D"

Line "F" on 37 acre tract
start from stone Survey
at Brownell road -
S 7 $\frac{1}{4}$ ° E in line with stone
at Fullertons <
11.10 set stake

(bearing of fence line S 6 $\frac{1}{4}$ ° E)

Line "G" -
start at stake on east side
of fence - east fence fence at
18 $\frac{1}{2}$ lbs center of fence
at 18 feet from fence
set north & pt -
S 82 $\frac{1}{2}$ ° W
at 25.15 stone set by
H. C. Moore -

25.15
19

24.96

Line H. produced Moors
line for west line of 37 a -
At 6 1/2 W 11.04 to stake set
in line - set drain tile
for corner
Set south 7' 8" from stake
set in line "A" for 25' ch -

North side of 37 acres
25.03

Callahan - Doan Survey May 11 - 1894 -

Chas. Griffin }
Robert Early } ch. or.
Joseph Early } Mr.

Line a begin at stake set by
Mr. Moore in channel of Rutherford
East of New Bridge D. & O. C. R. R.

580 1/2 ft
set south 16' at 18.02 1/2

at 39.97 ran 26' 10" south
of square limestone with + on
top of SWR to Doans track on
north

at 52.08 came out 26' 4" south
of stone set by H. C. Moore for
SWR to Doans
centering 10' 4"

Line B. 57 1/4 E
from stone set for SWR by Moore
to East side of thick tree. (big
old line tree)

at 18.96 found stone at "C"
on Moore's plot -
found stone in line by bearing

at 31.80 big thick tree set
east 8'
came out 6' 8" east -

at 37.84 1/2 stake set for SWR by
H. C. Moore

Line "C" on south side 200 acres

set 16' south of SW^{1/4} stake -
N 81 3/4° E 52.21 to 16'
south of stake set by Moore
for S & E

Line "D" set west 66' from
stake S & E and set west
66' from stone set for cent east
line N 19.28° -

at 19.83 fence claimed by Callahan
set stake 66' west of east line

on this line took bearing about
N 8° W (corrected N 7 1/2° W)
set east 40' and produced
line to N 8°

at 38.61 came out 26' west
of starting stake course O.K.

Line E
with fence claimed as line
by Callahan 19.83 from
S E R

set north 8'

S 80 $\frac{1}{2}$ ° W 28.99 set stake
came out 8' north

O.K. CSE.

Line F,

with fence S 2 $\frac{3}{4}$ ° W

2.56 to stake 23 $\frac{1}{2}$ ' north
from flank fence on north
side of road - fence runs
from this point west - on
south side -

and fences on both sides
of road east from this point
up to east side of house
same width -

Line G, run from thin
stake east to locate buildings

S 89 $\frac{1}{2}$ ° E

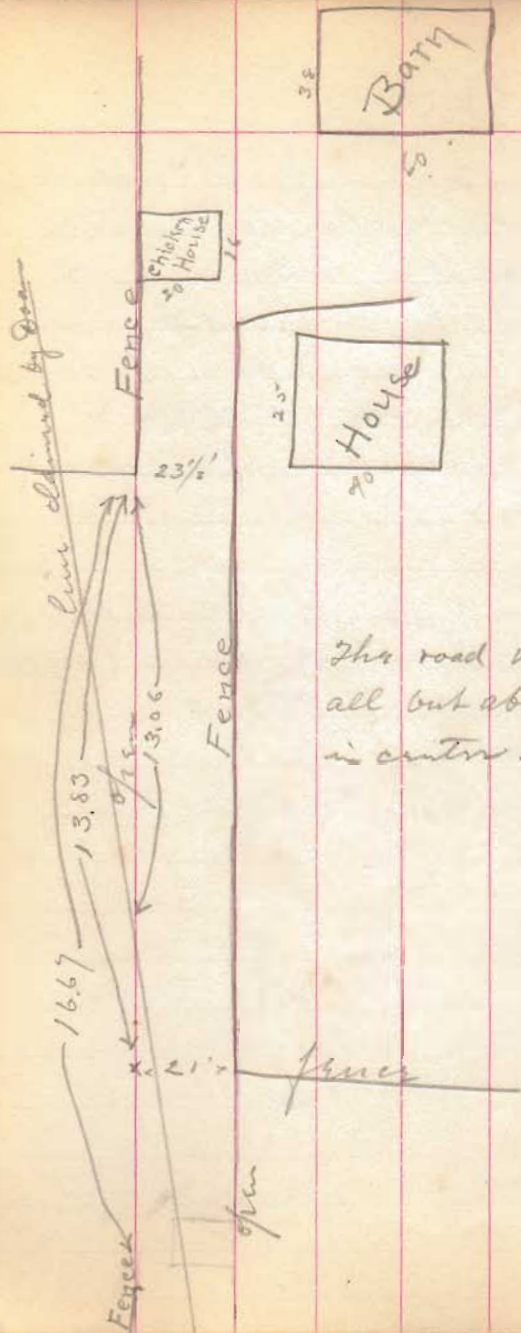
at 2.95 off house - dist 10° south

" 4.72 " chicken house 16' x 20'

distant .27 the south

at 5.95 off barn dist 1.48 south
barn 38' x 60'

The long way of barn & House &
Chicken house via north & south
House about 25 x 40



The road was plowed
all out about 4'
in centre -

Line 71 - from end of line F.
N 89 1/2 W
at 13.83 end of fence on south
of road 21 ft. dist from this
north link
at 13.06 cross line claimed by
Doan -
at 16.67 fence on north side
of road -

Bearing of fence from this
point to end - N 89 1/4 W
at 27.20 1/2 end of fence at
turn of line to north
produced west to west
line of farm 27.60 1/2

at N 7 1/4 W 2.48 from
centre of west line as
set by Moors -

Line J -

with fence on east side of
road and west side of
Doan's field - from point

at $27.2\frac{1}{2}$

at $7\frac{1}{4}$ W at $1654\frac{1}{2}$ north
line of farm at $43\frac{1}{2}$ lbs -
east from NW2 stone
set by Moore -