

Longbrake E/ Downe Surv.

Feb 11th 9/12th 1907

Start at stone X road. N 2 E of

With pick N 84 3/4 W

at < wood land

" 1351' < NW Bridgeman land

Line B. Start at N W < Big

at 26 1/2 fence N line wood land

" 2692.4 SE < ansley land

" 3107.6 SW < Big land at ang cut

" 1500' cut to mark distance

Line C. From SW < Big.

N 83 1/2 E with chan cut

at 781 ft post chan cut 4.5 of Elm 3' de

thence N 77 1/2 E with chan cut

618 1/2 ft to E fence SE < Bridgeman

Line D. From stone X road N E < Big. land

S 4 1/2 W with cut to road E/ E line Big. "

at 1500' cut over narrow track in cut road

" 2692.4

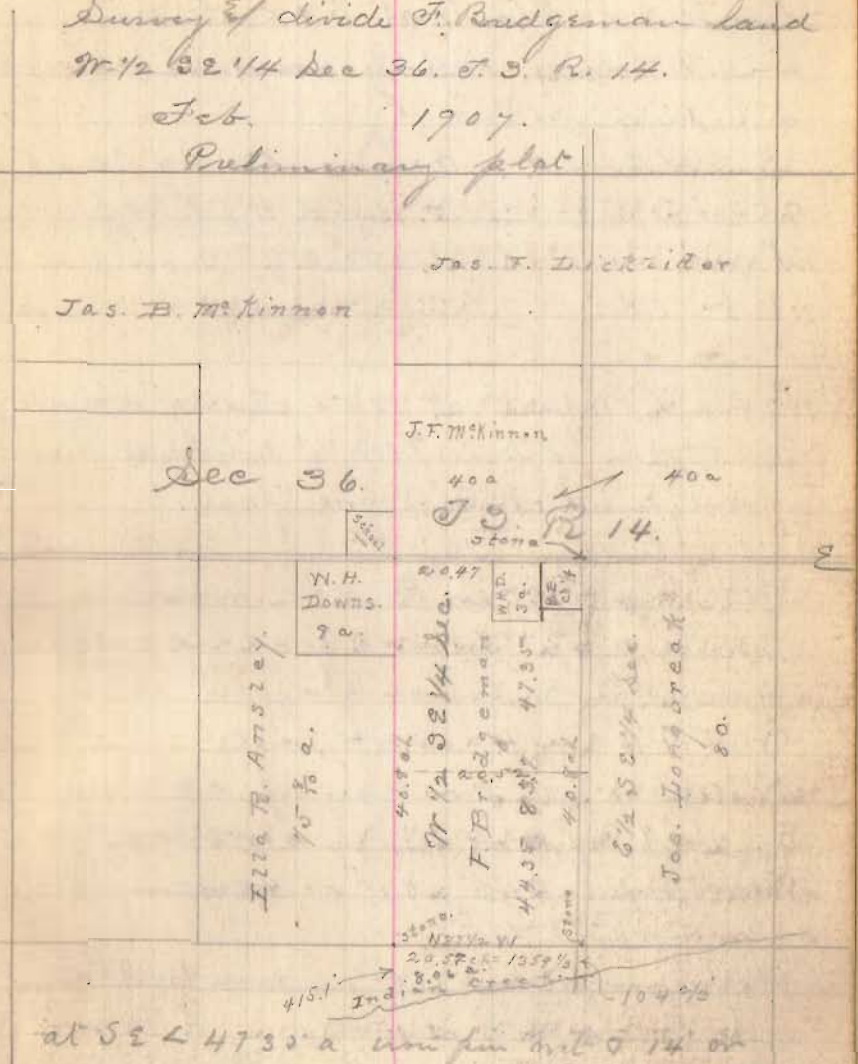
" 2759' cut bridge over head cut

Longbrake E/ Downe Surv.
N.

Survey of divide J. Bridgeman land
N 1/2 Sec 36. T. 3. R. 14.

Feb. 1907.

Preliminary plat



at SE < 4730' a iron pin with 14 or

Long Brake E of Downs Surv.

Line 2. Start at S E < Aveluy 80
in W line Bridg land at 2692
on line B.

S 84 3/4 E. across Bridg land
at 1358' cent road & line of
Bridgman land at 2692 on line B.

Line 3. Start at SW < Bridg
East along fence 719 1/2' & to line of
wood land at East gate post.

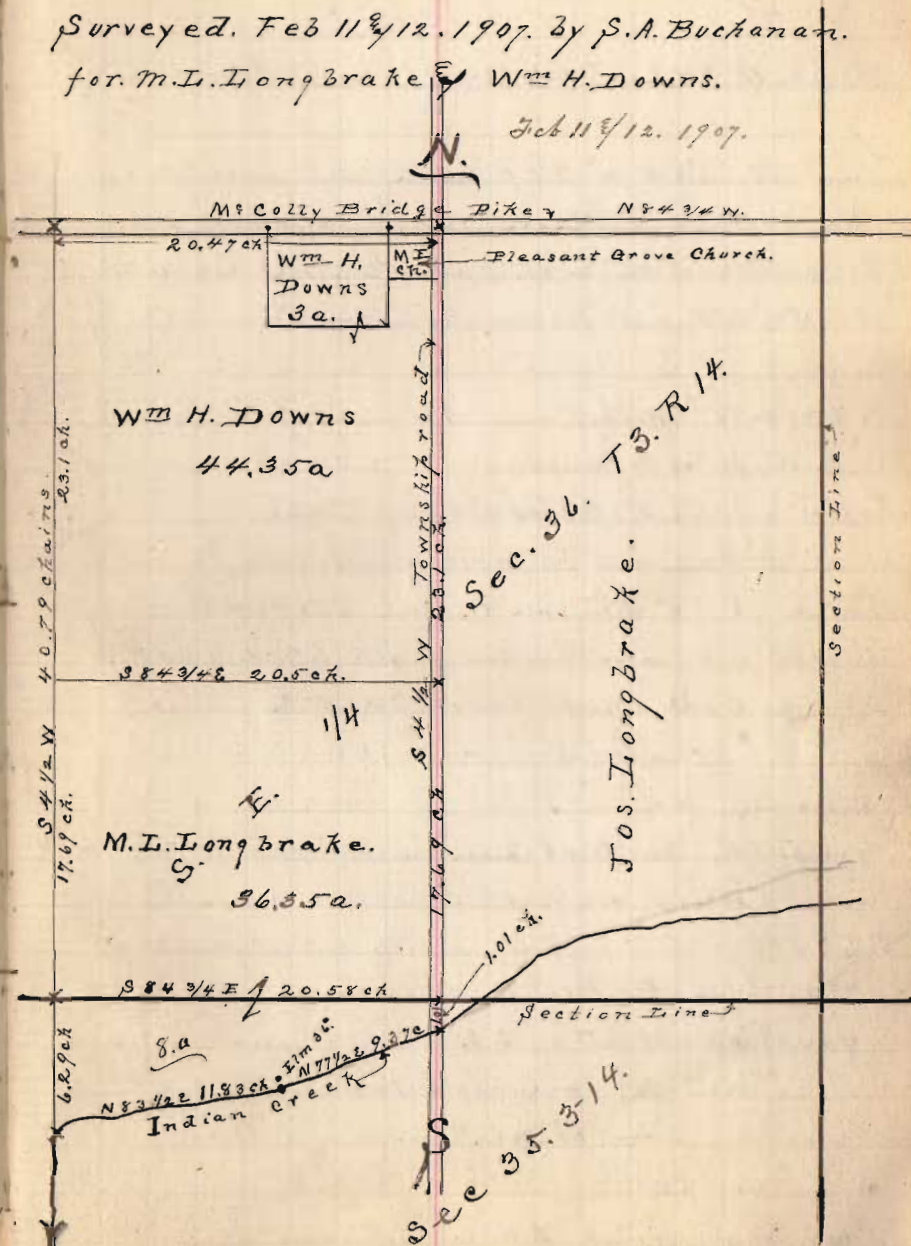
Meas from NW cor of NE < wood land
South 242' to SW < of SE < of wood land
4 acre to M to Long Brake.

Or it 732 < 4a wood land

Stitch on road oak stump 22" dia
S. 2' 6" Oak stump 22" or 3'
Wood land 242' x 719' = 4 a.

Meas from stake 1500 on line B. E of from
iron narrow tooth at 1500 " " d. S 4 1/2 or
24 1/2 feet to division line of Bridgman
lands. N part to Wm H. Downs = 44.35 a + 3 a
S part to M to Long Brake 44.35 a
Division line at 1524 1/2 feet from N line at pipe

Plat W 1/2 S E 1/4 Sec 36. T3. R14
and pt N. end W 1/2 N E 1/4 Sec 35. T3. R14
Surveyed. Feb 11 1/2. 1907. by S. A. Buchanan.
for M. L. Long Brake & Wm H. Downs.
Feb 11 1/2. 1907.



John Cook Survey Feb 28-1907
In Survey #4990. Bellef. O.

Land area 574 ac at cent Linden St

Line A. Start at 202 spike cent land area
Rand NW < Peterson 1060. E of John Cook 1 a.

thence Rand with W. line Peterson S 6 1/4 W
at 250' set iron narrow tooth for SW < Peterson

Line B. Start at iron " " " "

S 83 1/4 E. with S line Peterson 173 1/2 to W.

line A. E. & Dunkey

Laid off S 2 < Cook 90' by Vern.

Start at iron pin narrow tooth Rand. SW < Peterson

thence at 90' Peterson W. line N 83 1/4 W

at 100' set iron narrow tooth SW < Cook.

Set over spike cent land area NE < Cook

Survey 90' W and on eas West 100' to W line Cook

produced N.

Line C. Start at iron narrow tooth SW < Cook

thence with Cook W line produced south

S 6 1/4 W - at 538.3' strike wire fence

N line to J. Blair. set iron pin 1 1/4" x 2 1/4"

falls 65' W of S E < & Watson S 2 lot and

line between orig lots 16 & 17.

Line D. Start at iron pin N line Blair E of

S. E line C.

Measure east along Blair N. line

Line E. concluded.

at 65' pass < in fence old line lots 16 & 17 and
offset on fence S 6 1/2

at 288' post < Venable E of A. J. Y. P. E. Dunkey in
N line Dr Blair

Line E. start at NE < John Cook

S 7 1/4 W - with cent land area

at 108 1/4' post cent land area

NW < Cook.

Line F. Start at post cent land area NW <
John Cook thence with Cook W line
S 6 1/4 W.

at 32 feet in iron pin 1 1/4" x 2 1/4". S. side land area

208 1/2' narrow tooth SW < Cook - Random <

" 213.8' iron pin 1" x 1 1/2" long - SW OK < Cook.

Line G. Start non h.t. S. E < Cook

thence with S. line of Cook produced east

S 83 1/4 E. 173 1/2 to 1 in W. line Dunkey same

as Rand S E < Peterson

Line H. Start at NE < Cook cent land area

N 7 1/4 E with cent land area

at 85.85' cent Linden St

" 114 3/4' iron pin NE < Peterson W NW < Whitehill

" 178 3/4' post NE < Whitehill in W. line Dunkey

Line J. Start post cut land ave NE
 Whitehill of NW of Turkey
 Thence South with W line Turkey
 at 241 1/4 < Stable of SE of Whitehill
 " 318 1/2 ^{323 1/2} & Rand SE of Abel Peterson
 " 855 1/2 < Fence SE of Venable of SW of Turkey

Blair's N line course N 85 90.

Line J.
 Start at SE of Gas Whitehill at SE of Stable
 Thence West on line Whitehill of Peterson
 62' to fence SE of Whitehill. - 2' = 60' see note.
 Note SE of Whitehills stable has clipped on its
 foundation to east 2' at SE.

Line K. Start at < fence SW of Whitehill
 Thence N. with Whitehills orat line
 at 219 1/2 Iron pin cut land ave NW of Whitehill

John Cooke acre W. side Venable.

Line L. Start at SE of John Cooke 1.06 a
 and NE of Danohue in W line Venable
 Thence with S. line 1.06 a tract
 598 90 at 129.75 SE of Whitehill fence
 " 151.8 SW "

Line M. Start at SE of Cook 1.06 a. see line L. beg.
 Thence with E line 1.06 a and W line Venable
 N 5 E + 365.3 to NE of 1.06 a. cut land ave.
 Thence with cut land ave
 574 90. at 143' pass E line F. Whitehill fence
 " " 190.4 NW of F. Whitehill
 Thence with 90 line " " of E line Geo Henderson
 54 1/2 90 101.2' to angle in line
 Thence 522 1/2 E. 48.3' to ang in line fence
 Thence with fence 54 90 91. to < fence SW of
 to F. Whitehill of SE of Geo Henderson in N
 line Danohue.

Note. To make Abel Peterson tract
 hold out 1 acre as specified in deed
 The random corners hereinbefore named
 at his S E. of S. 90. corners must be moved
 south 5 1/3' (5 3/10 feet)

Mar 6-1901

Line N. Mar 6-07. Start cut land ave NE of
 Whitehill of NW of Turkey. Thence with Turkey line
 S 5 90. Moved rand & Peterson S 5 90. 5.3' to OK &
 set iron pin 1 1/8" x 1 1/2" long at 2 in old fence now
 Moved Rand SE of Cook S 4 3/4 90 5.3' cut com block on
 " " SW " " 5.3' Iron pin 1" x 1 1/2" fa <

Wm Kaylor Surv. Dec 19-3-14

March 4th 1907.

Frank Culp. } chain corners
 Earl C. Culp. }
 Roy Kaylor maker

Line A. Start at stone ^{in line given and} cent pike N⁹⁹W & Kaylor 50a,
 Thence with cent pike S 86 1/4 E
 at 132.6' stone NE & Kaylor, 30' or of Iowa line
 Ok course & dist. S 86 1/4 E 20.09 chains
 Line B. Start at stone NE & Kaylor
 Thence S 4 3/4 W
 at 2645 1/2' - 1-8 slope hill = 2643 1/2'
 Ok course & distance S 4 3/4 W 40.05 chains
 Thence Line C. N 86 1/2 W with Kaylor S. line
 at 13' 35' cor stone S W & Kaylor
 Ok course & distance N 86 1/2 W 20.22 chains
 Thence Line D. N 5 E with Kaylor N line
 at 404 3/4' pass stone & Smith Prof Huling
 at 2650' stone cent pike N⁹⁹W & Kaylor
 40.15 chains

Plat of Kaylor Surv.
 Mar 4-1907.



Sec 19. J. S. R. 14.

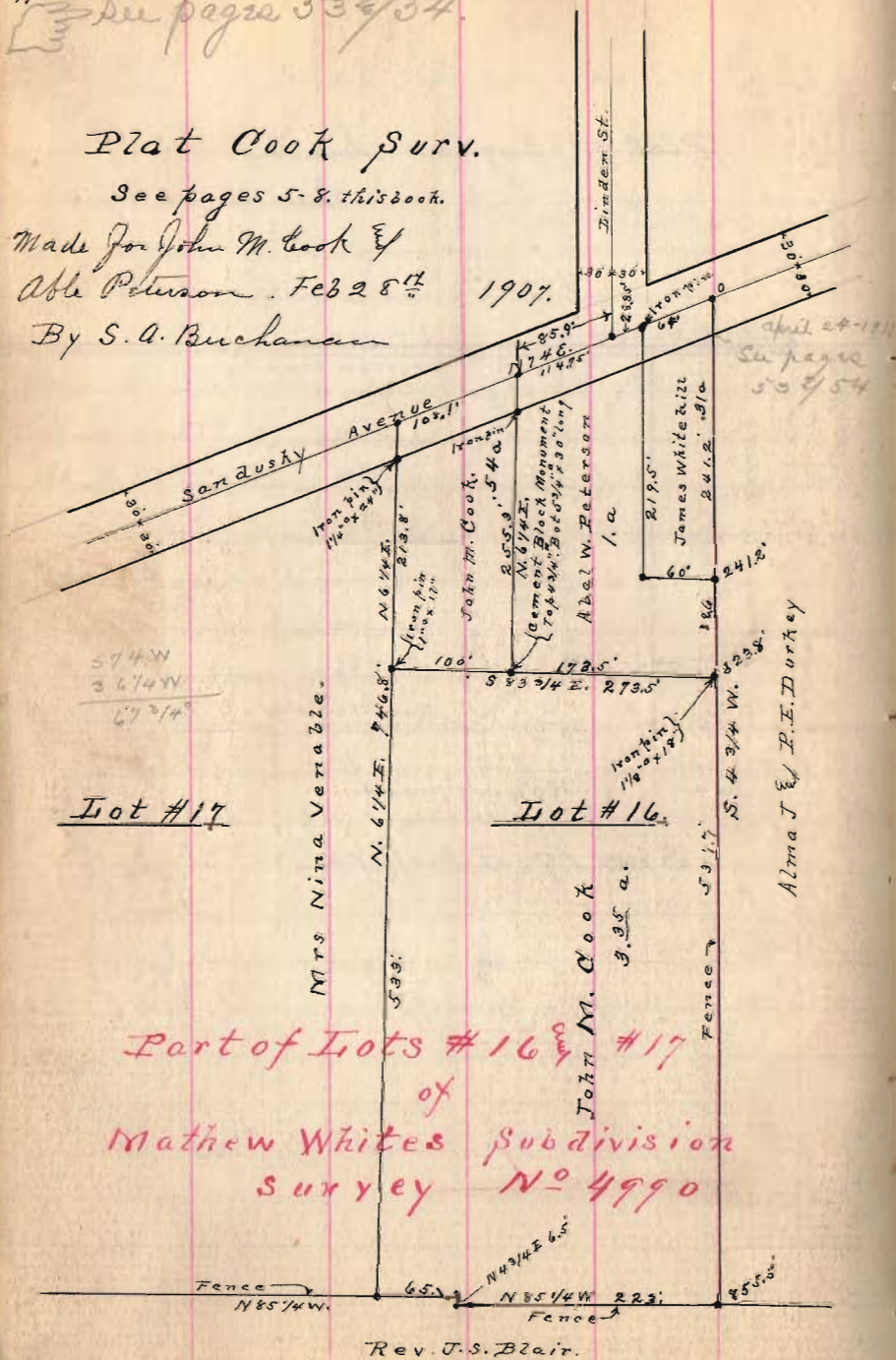
11 See page 53 2/54

Plat Cook Surv.

See pages 5-8, this book.

Made for John M. Cook &
Able Peterson. Feb 28th 1907.

By S. A. Buchanan



Lot #17

Lot #16

Part of Lots #16 & #17
of
Mathew Whites subdivision
survey No 4990

Rev. J. S. Blair.

Chas. Austine Surv. Mar. 8-1907
Geo Bartlett }
Joe W. L. L. }
John Kerr Chas Austine Make

Line a. Start at iron pin 3/4" x 30" long
at NW 1/4 Chas Austines 117 a in cent belly of N pike
S 7 1/2 E with cent pike of W. line Austine
at 1150'. set iron pin 7/8" x 10" in line with
Morgan Lintick of John Emery & on west

Line B. Start at iron pin cent-pike S E line A
N 82 1/2 E
at 39 3/4 set pipe 1 1/2" iron pipe 30" long well point
in center Austine pike

Line C. Start at iron pipe end Austine pike E E line B.
N 16 6 With center Austine pike
at 12.5'. set line stone in angle of pike in line
of June 20 line Austine of S line W. P. Kerr. above line
stone 6" x 17" x 10" marked on top. Stone top 3" below
ground on pike 1/2 12" E of end gravel

Chas Anstine Sur concluded
 Line I. Start at stone cut Anstine pike
 in N line Anstine & S line W. P. Kerr
 S 83 1/4 W. with fence and line Anstine & Kerr
 at 546 1/2' from pin cut Hunter pike N E line a
 corner of Anstine pike N of stone & N 11 3/4 E

Anstine & Neer Surveys.
 Field Notes.

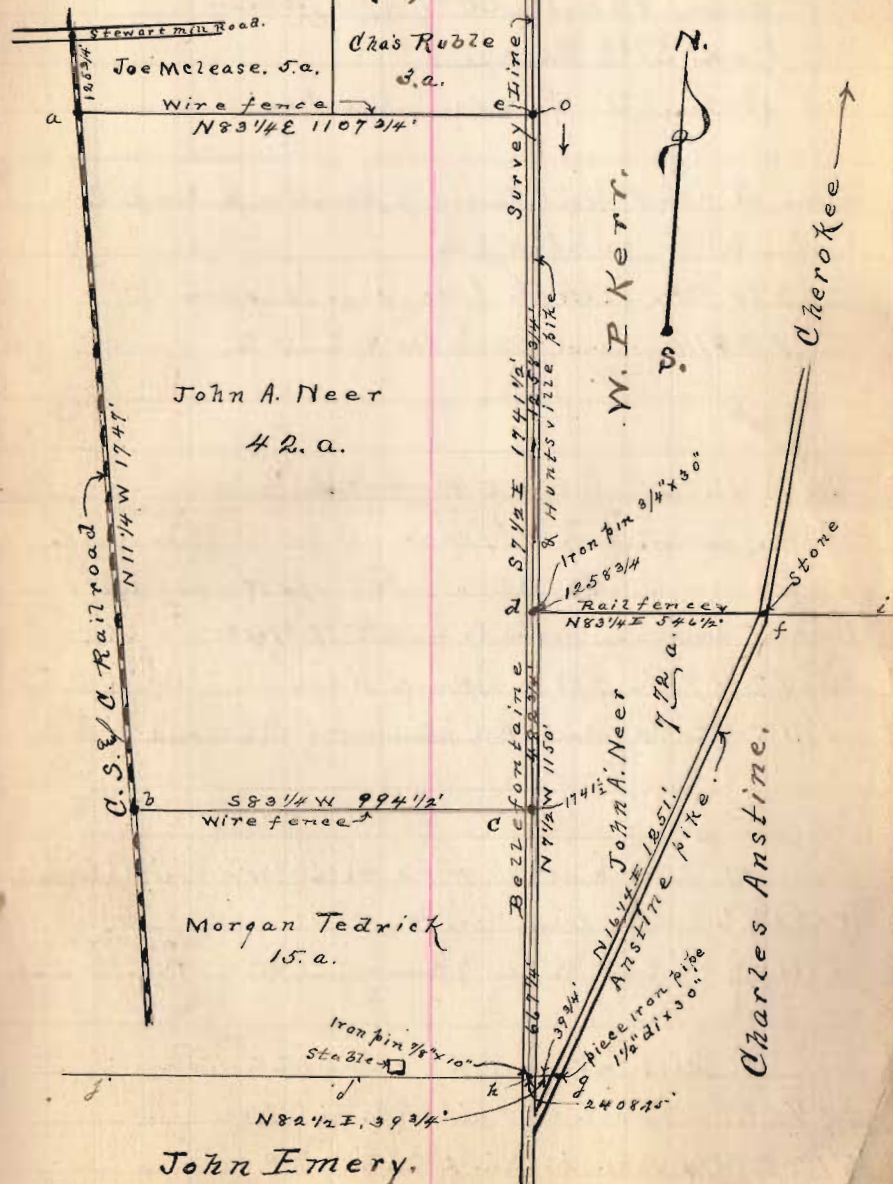
- a. post center C.S. & Ry. 125 3/4' S. of cut Stewart Mill road.
- b " " "
- b to c. with wire fence
- c post in Huntsville pike in line with wire fence
- d = iron pin 3/4" x 30. about 2' E of cut gravel on pike. in center line
 of old rail fence from d to f. about 2' E of cut gravel
- e post center line wire fence a. to c. in pike
- f stone, lime stone 6"x17"x10. marked on top - planted in line
 of fence d. f. i. by S.A.B. Mar 8.-07. in angle of Anstine pike
 and 12' or 15' E of center of gravel.
- g piece 1 1/2" iron pipe 30" long. cut pike f. to g.
- h iron pin 7/8" x 10" in B. & H. pike about 78' or 2' E of cut gravel & in line
 center of a rambling rail fence h. to j. supposed to be track of Emory

Plat. Anstine & Neer. Surveys.

See pages 12 to 15.

Mar 8-1907.

Field Notes, page 13.



See plat page 14.

John N. 222 Sur Mar 8-1907
 Geo. Bartlett } ch. cr.
 Joe M. Chase
 John A. N. 222. m. k. n.

Line A Start cut Bell & Hunter pike S E
 John A. N. 222 & N E
 S 83 1/4 W with line fence over
 at 994 1/2 cut main track to S E

Line B Start cut Ry or E line a
 at this point line a reads S 85 1/4 W
 " " " " B " N 9 3/4 W along cut Ry
 correct course line B = N 11 3/4 W
 at 1747' N E & John A. N. 222
 " 1872 3/4 cut old Stewart Mill road

Line C Start cut Ry N E & N. 222 S W & Joe M. Chase
 N 83 1/2 E with line fence
 at 1107 3/4 cut Bell & Hunter pike N E & N. 222 & S E
 John A. N. 222

Line D Start at cut B 9/4 pike N E & N. 222
 S 7 1/2 E with cut pike & E line N. 222
 at 1258 3/4 pass in front of Antine & W. P. Kerr on cut
 at 1741 1/2 S E & John A. N. 222

Wm H. Hone Surv. continued

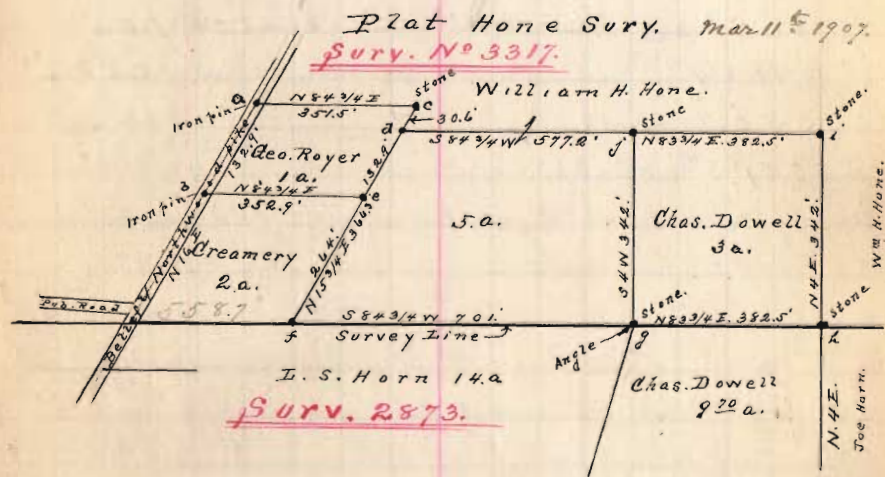
Line E Start at stone NW^{1/4} Howell 9²⁰a and in
S line Wm Hone & S
S 83 3/4 W with S line Hone & Surv. J. M line So. S.
at 401. Go S 22 E Creamery lot at fence post

Line F. Start at S 22 E Creamery lot
N 15 3/4 E with fence to line Creamery
at 264'. Fence post N 22 E
" 391 2/3' cut & temp
" 396.9' set stone 14" x 12" x 7" = S 22 E Geo Royer 1a

Line G. Start at N 22 E Creamery lot
S 84 3/4 W with fence to line Cream and S. line
Geo Royer 1a lot
at 352.9' iron pin N. W. E Cream. in cut Bailey
and Northwood pike S W E Royer 1a

Line H. Start iron pin in cut pike S W E Royer
N 16 1/4 E mag. with cut pike
at 132.9' set iron pin 5/16" x 1" x 10" NW 2
Royer 1a.

Wm H. Hone Surv.
Line J. Start at & temp & line F
S 84 3/4 W mag.
at 351.5' post-cut pike at



Chas. Royer. Surv. Mar 12-07

Start at ∇ SW \angle Chas Royer lot on
E side Main St - his res. Iron City Heights
thence N with E side Main St

- a 105' set iron dist from East ∇ 105'
 b 210 3/4' " " " " " " 105 3/4'
 c 350.7' wood ∇ " " " " 139' 10"
 d 357' 3" set iron pin " " " " 8"
 o - orig stake. SW \angle Royer lot, set when add was surveyed
 c " " " " lot \angle " " " " "
 a set iron pin 7/8" x 18"
 b " " " " " 9" N. of fence passing east
 d " " " " " 8" " " " " " " " " " "

Line B. run line on east end of Royer lot
same distances as shown above

- o - old orig ∇ SW \angle Royer lot
 105' set iron pin
 210 3/4' " " " " 3" N. of old orig ∇
 357' 3" " " " " 8" " " " " " "

Thos Fitzgerald Heirs. Survey
On Order Agnes Fitzgerald. Adms March 15-07

Ezra Miller } chosen Ben Cheslar
 Okley Iron Farmer } Marker

Sec # 7, Town 2, Range 14.

Line A. Start at old ∇ in cent Mang ∇
 Swanigan pike SW \angle Cen. ∇ SE \angle a. c.

Tuller's corner 54 1/2 or. as below
 55 1/2' with cent pike & Sec line
 at 412.9 old S line Cen. ∇ N line Fitz

" 527.9' Juncet S. line Cen 1392 and
 N line Thos Fitz

" 1383.6' SE \angle Thos Fitz ∇ Ernest. Shaw.
 Fall 9' 4" west of cent ground on pike.

Set iron narrow tooth 5 1/2" x 10" out pike ∇ SE \angle Fitz

Line B. Start at iron to tooth cent pike SE \angle Fitz

N 85 1/2' W onth fence ∇ S line Fitz ∇ N line Shaw
 at 527.0 \angle Juncet SW \angle Fitz ∇ NW \angle "
 set 3/4" iron pipe 36" long at fence SW \angle Fitz
 at 6" N of cent wood post in fence

Line C. Start at iron pipe SW \angle Fitz

54 1/2' E with iron fence N line Fitz
 at 855.4' cor. fence NW \angle Fitz ∇ S line Cen
 " 969.7' old NW \angle to Fitz. in S line Cen

Fitzgerald Survey concluded.

Line 8. Start at NW \angle Fitz & S W \angle
 139 a tract from Assn.
 S $85\frac{1}{2}^{\circ}$ E north fence S line 139 a
 at 529.4' cut pipe NW \angle Fitz & S E \angle 139 a
 set iron hammer tooth $5\frac{1}{8}^{\prime\prime} \times 10^{\prime\prime}$ long
 in cut gravel. NE \angle Fitz. SE \angle from 139 a

Field Notes.

Fitzgerald Survey.

- Old wooden stake center gravel in pipe
- post end pipe. old N.E. corner Fitzgerald & S.E. cor. Cem.
- iron hammer tooth. $5\frac{1}{8}^{\prime\prime} \times 10^{\prime\prime}$ cut gravel in pipe. Angle $\frac{1}{2}^{\circ}$
- " " " " " " " " S.E. cor. Fitzgerald
- d to e. Old fence row. S. line Fitzgerald & N. line Shaw
- $3\frac{1}{4}^{\circ}$ iron pipe 36" long. sq. head on upper end. in wire fence
- large wooden anchor post. NW \angle Fitzgerald
- Old NW \angle Fitzgerald land in S line cem. corner fence.

Plat Fitzgerald Survey.

Sec 7. Town 2. Range 14.

Mar. 15-1907.

A. C. Tully's Land

(De Graff.)
 Greenwood
 Cemetery.

Cretcher's Land.



Sick Larnu Durr Sat. Mar 16-1907

Part Sections 3 & 10, T7 R. 8.

A. J. Brenner }
Chas. Larnu } ch. c. R. S. Larnu marks

Public road = N 82 1/2 W

Line a. Start in cut part road N 2 < Larnu &
N 77 < Graham tile yard

S 1/4 E with line Larnu & Graham

at 346.1 offset 2.

668.0' < c = S 2 < Larnu in Joe Doudens N^{line}

Line B. Start S E < Larnu = S E line a

N 89 3/4 W with S line Larnu & N line Doudens

at 200.2, N 77 < Doudens & interior < Larnu

454.9' at cut bet d & e = > Brenner & Larnu
left pin at 500'

at 709.8' point e in N line Larnu

354.9' at < Brenner & Larnu

Line c. Start at < Doudens & Larnu = d

with line Doudens & Larnu

at 905.1' part N side old fence row

907' " cut " " < Brenner & Larnu = f

Sick Larnu Sun

Line D. Start 7' N of cut old fence row < Brenner
with N line Brenner & S line Larnuat 289 3/4 W at 251 1/2' cut & < Brenner & Larnu
502 1/3' fall 7' N of S. W < Larnu & John Kescker S 2 < N
in N line Brenner 1350' at WLine E. Start at S W < Larnu & S 2 < John Kescker
& in N line Brenner 1350' = N E line D.
North with N line Larnu & E line Kescker

at 903' post 7' point e = N E line

1228.5' < Larnu & John Kescker = h

Line F. Start at h < Larnu & Kescker

589 3/4 E with fence and land line Larnu & Kes

at 195' = i Kescker & Larnu

354.9' at < Larnu & Brenner - cut h to b = k.

709.8' strike east line Larnu at point 2.

dis. i to 2 = 514.8'

Brenner from post i to k = 159.9'

Line G. Start at < Larnu & John Kescker = i

N 1/4 E with fence row

at 410.7' part cut road row < Larnu & John Kescker

Sick Lane Surv.

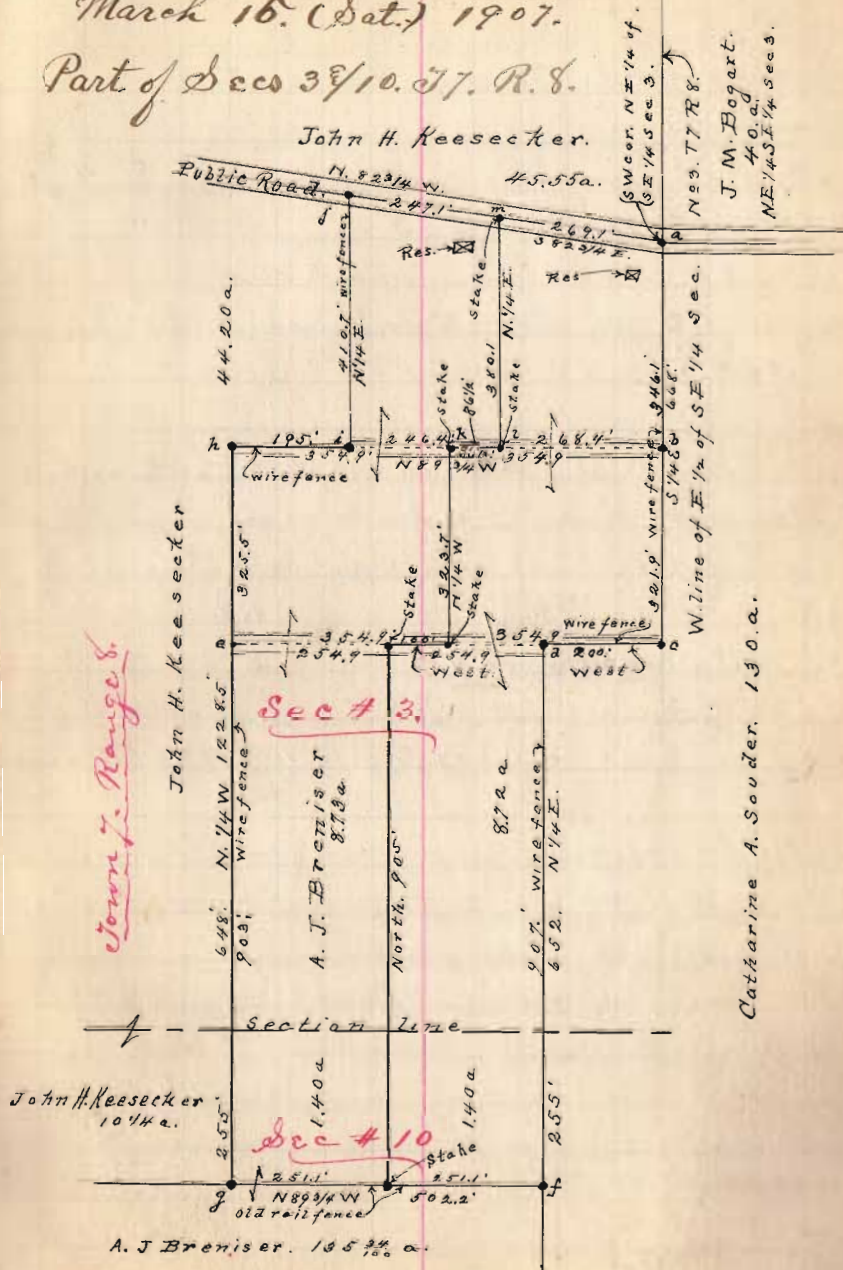
Line 76. Start at post cut road. NW \angle Lane
 S 82 $\frac{3}{4}$ E with cut road.
 at 516.25' post NE \angle Lane $\frac{1}{2}$ SE \angle John Keecker
 $\frac{1}{2}$ / S 87 J. M. Bogart = a.

Line 9. Start at post cut road = a NE \angle Lane
 N 82 $\frac{3}{4}$ W. with cut road
 at 269.1' set ∇ \angle Lane $\frac{1}{2}$ Brenner = m

Line 9. Start at post = l \angle Lane $\frac{1}{2}$ Keecker
 S 89 $\frac{3}{4}$ E with wire fence
 at 246.4' set ∇ \angle Lane $\frac{1}{2}$ Brenner = l

Line K. Start at ∇ l
 N 74 E. at 380.1' ∇ m cut road \angle Lane $\frac{1}{2}$ Brenner

Plat. Sick Lane Surv.
 March 16. (Sat.) 1907.
 Part of Sec 3 $\frac{1}{10}$ 77. R. 8.



Down 7. Range 8.

$$\begin{array}{r} 3 \ 5 \ 4 \\ 13 \ 4 \\ \hline 20 \ 1 \ 4 \end{array}$$

Miller & Fowler Surv.

Brands Add. W. side Hayes st.

Line A.

Start at iron pin cent Band and St Hayes
S 59' with cent Hayes st.

at 388' drove pin mark dirt

" 401.2 set wood ∇ on timber on line Hayes" 568.1 Old ∇ Curving SE \angle lot # 2011.Line B. Start at old ∇ NE \angle 2002.

S along lot line W side Hayes st.

make mark on cur side walk S line 2006

306.3' " " " " " N line 2007

349' set small wood ∇ line S " 2007

Measure from S line lot 2007 to above 401.2 = 11 1/2'

Find old ∇ at S. W \angle lot 2000 and SE \angle lot 2000." " " " NW \angle " 2003. and NW \angle 2005 & 2006.At S W \angle lot 2007 stake near center of alley.Drove piece iron pipe at S W \angle 2006 and NW \angle 2007" piece old wooden chironature post at S W \angle 2007

Mrs Ella Piatt. Surv.

West Liberty O. Lot # April 6th 1907Line A. Start at S W \angle as per Occupation
at 150' set spike

" 377' = W side Lupper st. plat dist = 376.5'

" long 6"

" 158.5' set spike center of alley.

Line B. start on W side Band St from W side det.

at 150' E side alley

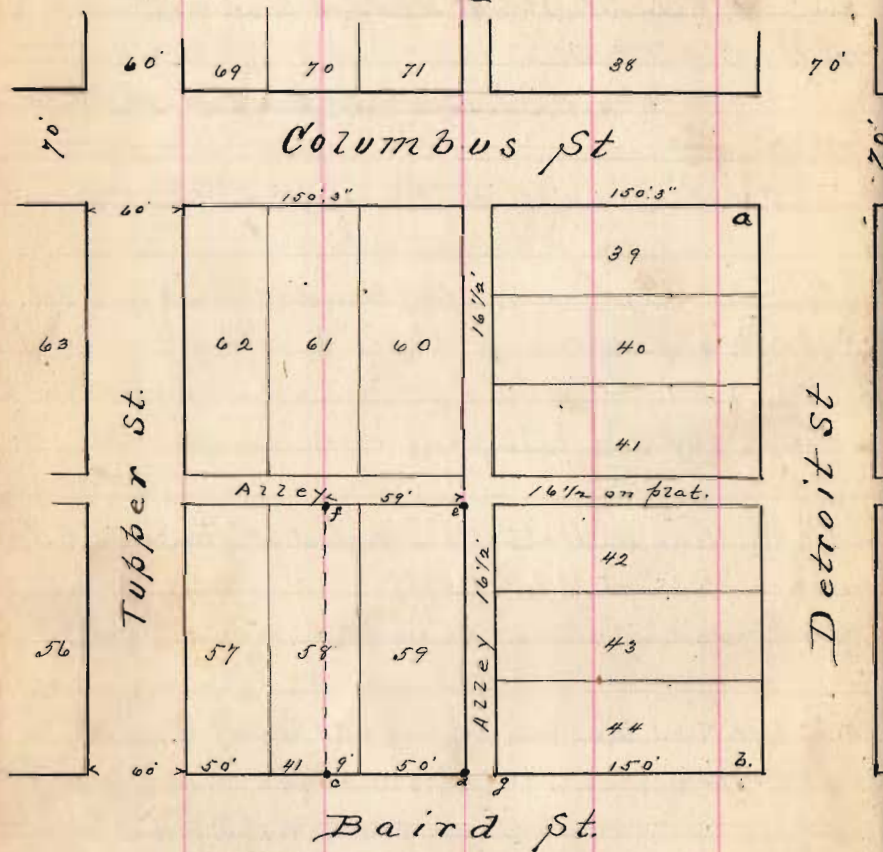
" 158 1/4' cent "

" 166 1/2' W side alley

Line C. take cent alley on Band St ∇ cent alley East St.
set ∇ 2" x 16" at SE \angle lot 59 = NW of S W \angle
gal. frame building on E side alley. \angle cement fdaNit to \angle ∇ on Ella K. Piatt lot # 59 ∇ 9' off E side # 58Plate D & \angle lot 59. S W \angle cement fda frame building
on W side Band St and E side 1st alley N of ColareNW \angle 16.8' ∇ cor old fence on st 8.5'Nit ∇ NW \angle lot 59. \angle old fence NW 45'. Old frame store
room. on st (on S side alley) 29.15'Nit joint. NW \angle lot 59. East side frame stable W 9.7'" ∇ \angle Mrs Piatt " " " " " " .7'W side Mrs Piatt no at \angle strip NW \angle is 4.4' E of line

Plat. Ella K. Piatt 20th Surv.
in West Liberty, Ohio.

See page 30. field notes N. April 6th 1907.



Witnesses.

- a. E. front brick business block. Water-table. S. at N.E. cor. building.
 " E. edge cement sidewalk, east 10'.
 b. E. front brick business block. Water-table. on west side of Detroit st.
 c. pine stake 2" x 2" x 16". = 59' west from stake a.
 d. " " " " = W. line cement foundation from building. east 16.8'
 e. " " " " = West line old frame storage room = east 29.15'
 f. " " " " = east line frame stalle. west 7/10 of a foot.

Mr Branson Surv: April 25th 1907

Line Branson & David Henry = N 4 1/2 W
 Relief of Jerusalem Pike from S. Pr. & Branson S 85 1/2 E

Line a. Start at SW & Branson & SE & David Henry
 S 85 1/2 E with cent pike & S line 20 a.
 596.5 fence line N. on E side 20 a.

Line B. Start cent pike E line a. with fence
 N 59 W. at 1498'

Line c. Start cent pike
 N 4 1/2 W with on line 20 a & E line Henry
 at 1500. set T.
 " 1498 made corner

Line d. Start at stake N E line c. = 1500
 S 85 1/2 E at 591 1/2 E line 20 a fence end to 1500

Set S 1 A' from each 1500 V = 1498.3'

at N 2 & 20 a: Red elm 5" S 6 1/2 W ~~14' 10"~~ 9' 8"

Aug 4" S 6 1/2 W 14' 10"

Planted granite stone 6" x 11" x 2 1/2"

Start at stone NW \angle Kelley South Kelley W. line
 at 30' cut ∇ S side Fair Ave. in W line Kelley
 " 171 " ∇ \leftarrow lot
 " 312 " ∇
 " 453 " ∇
 " 594 " ∇
 " 735 " ∇
 " 876 " "
 " 1017 " "
 " 1162. " "

Start at iron pin W. side alley east Fair Ave.
 Thence on center Fair Ave. S 86 E
 at 16' cut ∇ $\frac{E}{2}$ back to side alley
 " 341 " ∇ W side Park St.
 " 391 " ∇ E " " "
 " 716.3' stone N W \angle Kelley $\frac{E}{2}$ N E \angle to half

Start at ∇ east Fair Ave. E side Park St.
 Thence on E side Park St S 4 W.
 Set stakes at 30'. 171'. 312'. 453'. 594'
 735'. 876'. 1017'. 1162' = ∇ at N line $7\frac{3}{4}$ a

39 Pelletts & Peelle Surv.
April 29th / 30th 1907

Joseph Stanley } chain carriers. promise
J. M. Peelle }

E. W. Pellett. & J. H. Peelle.

Line a. Start at post sent pike 75.6. NW 2 Pelletts
S 26 or. Road. old rail fence.
at 1114'. set ∇ \leftarrow fence
Fall 1' E of dep = 1' in 1114'

Line B. From SE line a
S 84 $\frac{3}{4}$ E
at 124 $\frac{3}{4}$ above old \leftarrow

Line C. From above E to line B
S 15 $\frac{3}{4}$ E. Set R-W 6'. Cor. use S 15 $\frac{1}{4}$ E
at 1906 set ∇ cor. fall W of cor 19 $\frac{3}{4}$ dip = 13 $\frac{3}{4}$
set line ∇ at 1085' (cut line)

Line D. From SE line C.
S 74 $\frac{3}{4}$ or. 55 $\frac{1}{2}$ set ∇ \leftarrow

Pelletts & Peelle Surv.

Line E. From NE line D. ∇

S 13 $\frac{1}{4}$ E

at 252' ∇ by Auger 24' - ^{Sug =} N 45 E 1.6"

Line F. Start at ∇ SE line E.

N 59 $\frac{1}{4}$ E

at 327 $\frac{1}{2}$ ' corner \times \leftarrow 212000

" 1019' set ∇ SE \leftarrow Pelletts & Stanley.

mit bench 24' S 60 $\frac{3}{4}$ E 49.6'

" wild cherry 10' N 49 $\frac{1}{2}$ E 45'

Line G. From E to line F.

N 26 $\frac{3}{4}$ E. Set or 5'.

Set ∇ in offset line at 800'

1347' pass 7.3" or of wire fence

at 1862' cut post road. Fall 8' or of \leftarrow , ∇ = 3' W

Line H. start at ∇ NE line G.

N 63 $\frac{1}{4}$ or with cut post road 62 $\frac{1}{4}$

at 1000' set ∇ not in line

" 1490' line passes 17.1" N of hitch post Pelletts

" 1828' pass angle in pike turns N 58 $\frac{1}{2}$ E

" 2099' post NE line a = place of Sug.

Pellett & Peelle Surv.

Line H. cont.

at 859 fence line S 26 1/4 E

Elizabeth B. Pellett, widow of
George Pellett

Emmet W. Pellett
Cora A. Pellett.

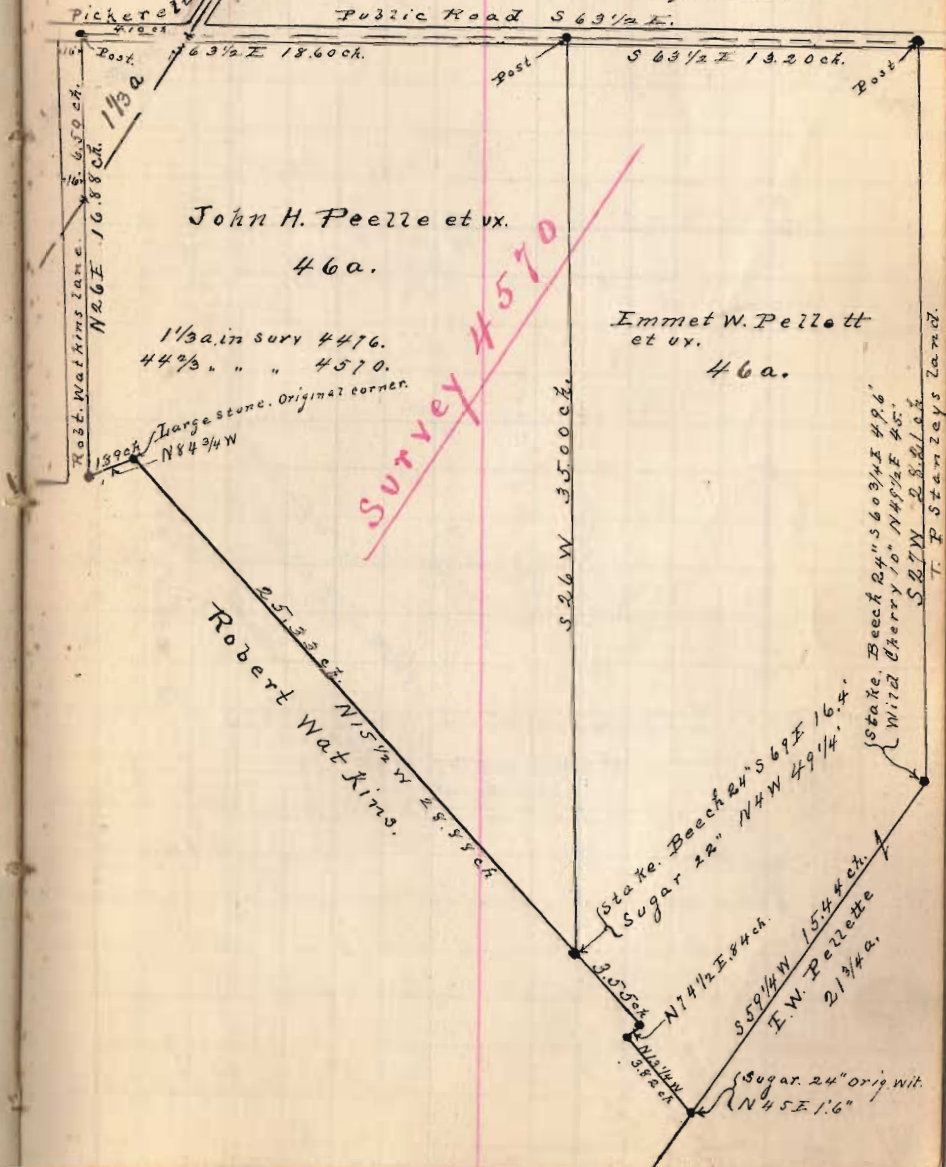
John H. Peelle
Francis E. Peelle

Send deeds to John H. Peelle
to ansfield C. Route 1

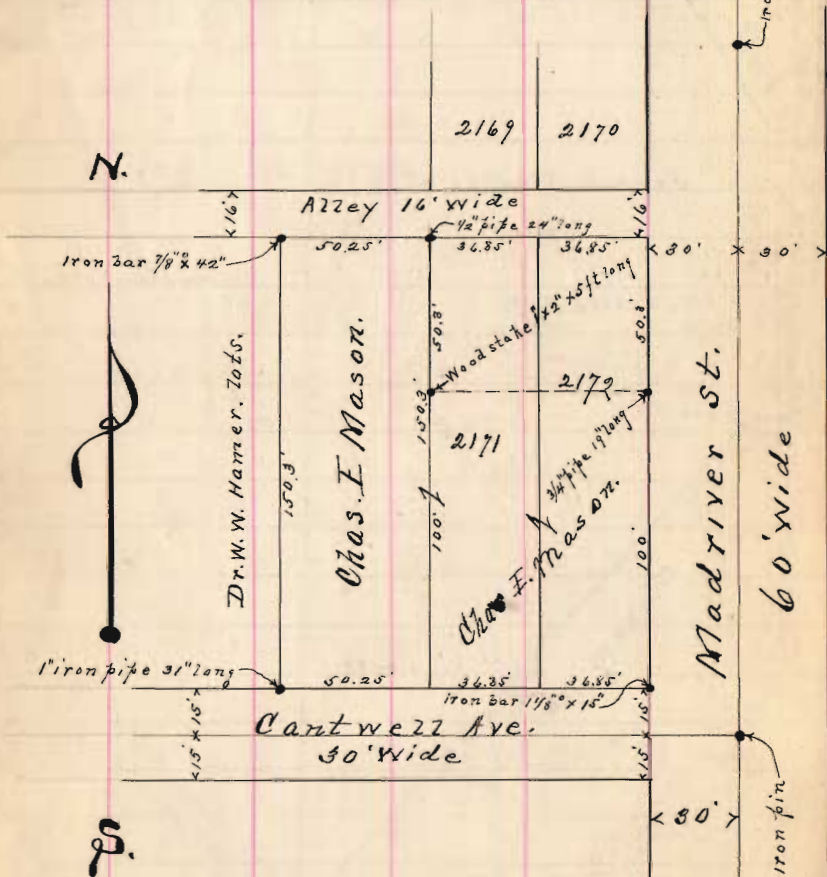
Plat of Pellett & Peelle Surv.

Apr. 30th 1907.

Old "John Loveless farm."



Plat Chas F Mason Surv.
May 6th 1907.



Sarah E. Knepper
Surrey — Tuesday May 14 - 1907

Joseph Townsend }
U. Z. Rose, George A. } chain carrier
Ferguson.

Line A. Start cent Riv. E of Big S pipe on cent Arch
cut (stone 4' span).

S 71 1/4 E 535'

at 585 cut 7 in E line Knepper on N side creek
with Black wal 10" x bank creek S 23 1/2 W 15 1/4'

White Wal. Bank 12" S 58 1/2 E 40 1/2'

Line B. Start at post cent Riv. E of B. S pipe & Knepper
of Parkison. with iron fence
S 38 1/4 E.

at 588 3/4 stone supported 4 10" S of fence.

" 590 1/6 post anchor on iron fence

Line C. Start at above anchor post-

at S + E. Start 1/2 night B N 82 1/4 E

at 230' post anchor. at old red oak.

" " fall 2.6" s. dep = 4 1/2' on 230 =

Line D. Start at post R. O <

S 13 1/2 E at 148 1/2' set iron pin for < on west side creek
at edge low water. set iron pin 3/4" x 1" x 36"

Line E. from T S E line S. with meand
Rush Cr. downstream

Line F. Start at ^{anchor post over fence} \angle Emmerich & Knepper on
N line Parkinson. Thence with Emmerich line
produced N 85° W. close to wire fence
85.8 (5.2 p.) to \angle Parkinson & Knepper

Line G. from T or E line S.
S 23 1/2° W. 132' out T. L 16' E of creek channel.
at Red Oak 30' N 81° E 5 3/4'
White ash 12" S 1 1/2° W 27'

Line H. Start at post \angle wire fence \angle Emmerich
& Knepper. N 81° E
at 493' \angle out fence \angle End line a.

at 495-2' for single ground = 493

Line I. Start at post amt Rush Cr Big S. between
creek. N E line a. North pipe 536 1/4 W.
at 547' cor Knepper & Parkinson

Plat. Sarah E Knepper Surv. May 14-07.
In Surv. #10041.



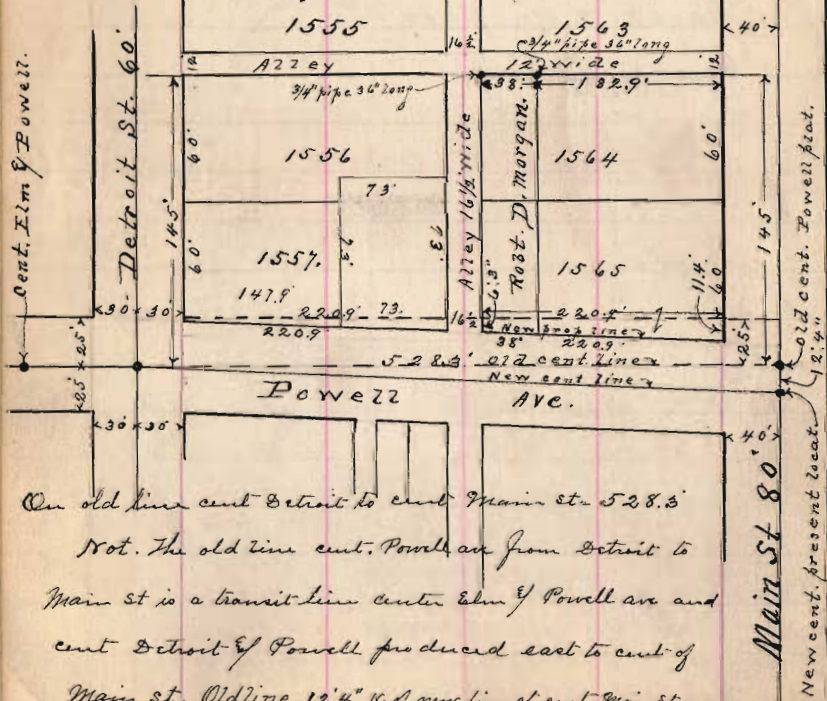
Surv. No 10041.

Note. The line between lands of Sarah E. Knepper, located & established this day by U.Z. Rose and Dr. A.V. Knepper, authorized agent for said Sarah E. Knepper, May 14th 1907. S. Buchanan Surveyor.

Morgan Lot Surv. May 16-1907.

- A. Start cent Dist of Powell av. Con out Powell at 252.3 spike near inside alley.
- " 528.3 cent Main St.
- " 267.5 out + 3 line Rott Morgan
- " 305.5 " " " "
- NE \angle Rott S. Morgan $\frac{3}{4}$ " black iron pipe 3'
- NW \angle " " " " " "
- at SW \angle Rott Morgan. alley crossing W. 8"
- Rott Morgan lot 38 of NE 1564 $\frac{2}{3}$ / 1565
- Cent Main $\frac{1}{2}$ Dist. Old surv 12.4" S of line by Finn.

Plat Morgan Lot Surv May 16th 1907



On old line cent Detroit to cent Main st. 528.3
 Not. The old line cent. Powell av from Detroit to
 Main st is a transit line center Elm of Powell av and
 cent Detroit of Powell produced east to cent of
 Main st. Old line 12.4" N. of our line at cent Main st.

Plat not drawn to scale.

Dea Griffith Surv Jan 2-1908

Charley Potter } ch. or. Promise
 G. A. Johnson }

- Line A. Start at \angle fence, loose stone in Treaty line
 NW \angle G. L. Bronson.
- thence with Treaty line N 83 E
 at 26 ch out \angle E of W line Griff
- " 29 " " \angle $\frac{1}{2}$ S. 13 in 42.8752
- " 42.87 $\frac{1}{2}$ ch out \angle NE \angle sec 1. dep = 513 links
- Line B. start at apparent center of road NE \angle
 sec 1. S on cent road at 25 ch. fence line in.

To line sec 1 Road S 59 W.
 set \angle at NE \angle sec 1 = NE \angle Jimmy's Long land.

- Line C. Start at \angle cent road NE \angle sec 1 - NE \angle of Long
 with road of sec line S 5 W
- at 5 ch out \angle \angle Long of Griffith - NE \angle 10 $\frac{1}{2}$ a
- " 11.38 ch out \angle S $\frac{1}{2}$ \angle Griffith 10 $\frac{1}{2}$ a
- at 15 ch \angle 10 $\frac{1}{2}$ a in road of sec line
- B. oral 10" N 85 $\frac{3}{4}$ W 40 $\frac{1}{2}$ links
- B. oral 8" N 14 $\frac{3}{4}$ W 97 $\frac{2}{3}$ "

Griffith Surr.

Line G. Course of road E line Grant
from NW & J. Long's land = $58\frac{1}{2}$ ch.

Line E. Start at ∇ NE & Sec 1 = NE & Long
West with Treaty line S 83° 30'

at 13.74 ch set ∇ in Treaty line NW & Long
(NW & Long 8.9 links N of Band Line A.)

at 16.425 ~~links~~ ^{ch} set ∇ _{or} root of old oak stump
16.415 ch. By spike in ∇ NE & J. Bronson 10°
Meas N line Bronson from NE & 10 a to NW 443a
= 26.46 ch = N line Bronson (Shultz) farm.

Offset or 28'

N line Griffith & E line Bronson $NE 3\frac{1}{4} E$.

Line F. Start at Ry Spike NE & Bronson Treaty line
thence S $3\frac{1}{4} N$ 34 poles and 5' set ∇ in
E. line Bronson & or line Griffith
Set ∇ at 16 $\frac{1}{2}$ = NW & Griffin 10 $\frac{1}{2}$ a
34 poles = 8.58 ch

Griffith Surr.

Line G. (27 $\frac{1}{2}$ a tract) Start at stone in
cut - M. Colby bridge pike & public road. at
S. W & NW $\frac{1}{4}$ Sec 36 & SW & 27 a.

With pike S 85 E

at 20 ch set iron pin, harrow tooth $7\frac{1}{2}$ " x 10" long
= 52 a in Griffith land

N line Sec 36 along cut road = $NE 5 E$

Line H. Start at iron pin SE & Griffin 34 $\frac{1}{2}$ a
 $NE 5 E$ 17.25 ch to ∇ NE & Griffin 34 $\frac{1}{2}$ a
With apple tree in Orchard 20" di S 85 E 4"

Line I. Start at stone in M. Colby pike SW & Griff. and
SW & NW $\frac{1}{4}$ sec 36

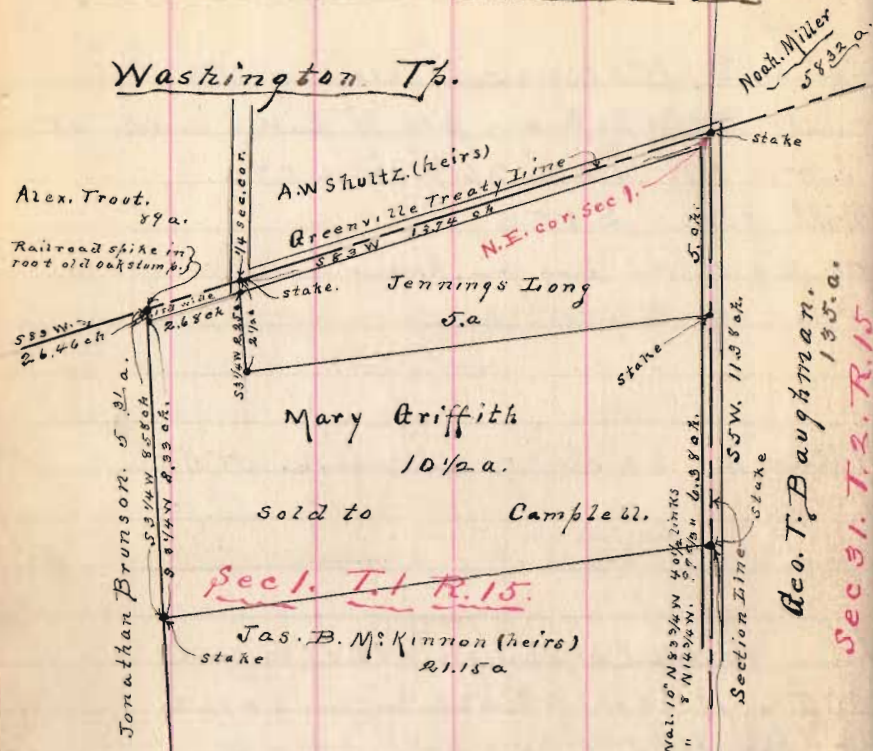
With Sec line and public road

$NE 5 E$ 17.25 ch set iron pin harrow tooth $7\frac{1}{2}$ " x 10"

Line J. Start iron pin NE line I. = NW & Griffin

S 75 E 20 ch to ∇ NE line H = NE & Griffin 34 $\frac{1}{2}$ a

Plat Griffith Surv. Jan. 2. 1908.



Jonathan Brunson, 52.31 a.
S 3 1/4 W 55.50 ch
S 8 1/4 W 49.99 ch

Sec 1, T. 1, R. 15.

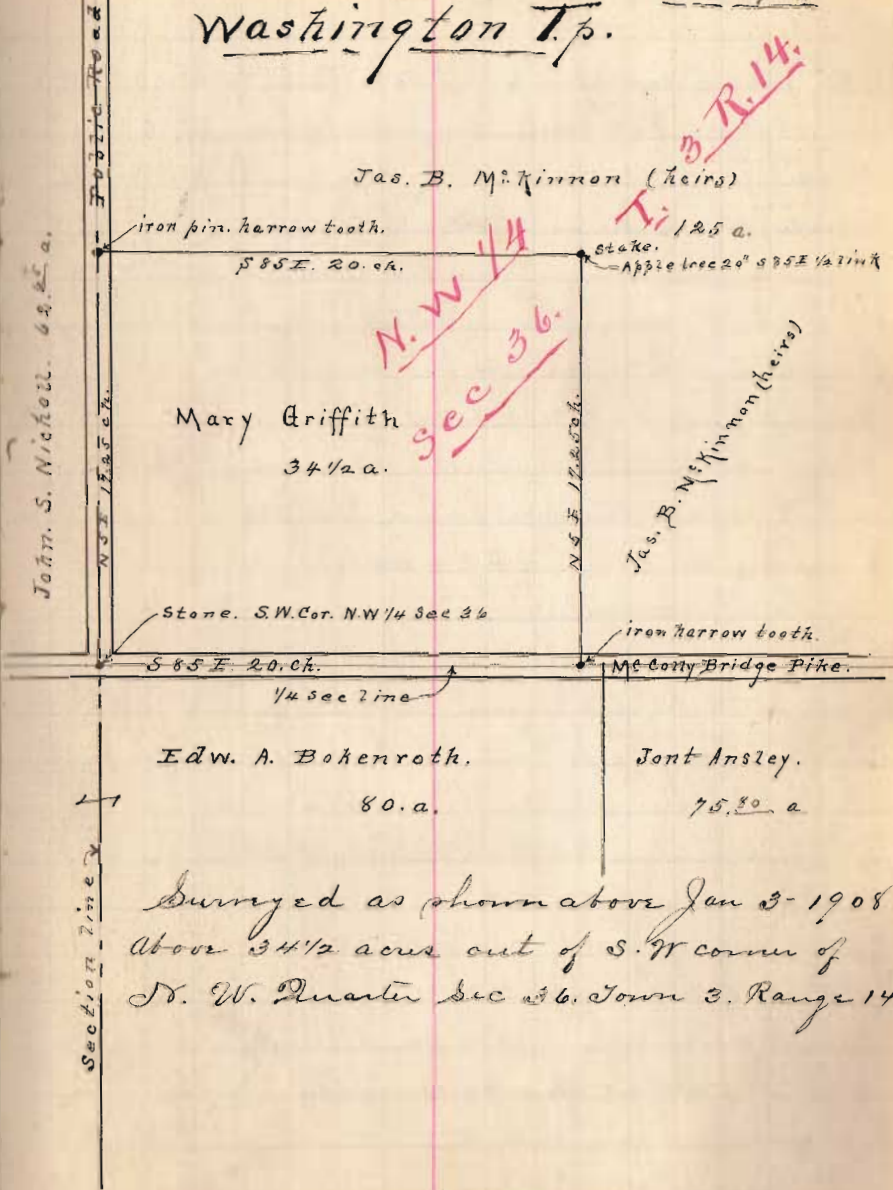
Dec. T. Baughman, 135 a.
Sec 31, T. 2, R. 15

Surveyed as shown above Jan 2nd 1908.
 Above 10 1/2 acres part east end fractional sec 1, T. 1, R. 15
 Note. The NE cor Jonathan Brunson 52.31 a. in Greenville Treaty line located by meas. 26.46 chains from his N. W. corner in said line. A strip of land 1 rod wide lies between the north line of Griffith tract and Greenville treaty line, belongs to Brunson. The Greenville treaty line is straight from N. W. cor. Brunson 52.31 a to NE cor. sec 1, T. 1, R. 15. Here an angle to south.

Plat. Griffith Survey.

Jan 3-1908.

Washington Tp.



T. 3, R. 14.

N. W. 1/4 sec 36.

John S. Nicholl, 64.25 a.

Section Line

Surveyed as shown above Jan 3-1908
 Above 34 1/2 acres out of S. W. corner of N. W. Quarter sec 36, Town 3, Range 14.

Whitehill & Peterson live in Bellefontaine on East Sand Ave. April 24th 1911.

11) set flag 3' east of $\angle a$ = S or \angle Percy & Alma Burke in or line Per. Blain land in Survey No 4990 also set flag at 3' east post β = old part of post and board fence on E line Whitehill & W line Burke. The line run straight from the angle iron fence post at the S. or corner Burke & SE \angle John Cook part a point 2 1/2' out of an iron pin and on the see able. Peterson and or \angle Cook land falls 4" east of the corner at S. side Sandusky St and same being or or corner Burke land & or \angle cor Whitehill land. Distance d to e = 64.16'

c = corner on straight line

d = center old fence post hole and original corner to Whitehill and Burke as claimed by owner

e = an iron pin 3/4" set this day by one for the or or corner Whitehill and or \angle Peterson

f = point on line between Burke & Whitehill at 25' from stone foundation on line of 2 st. Residence at S side of porch and or \angle cor house

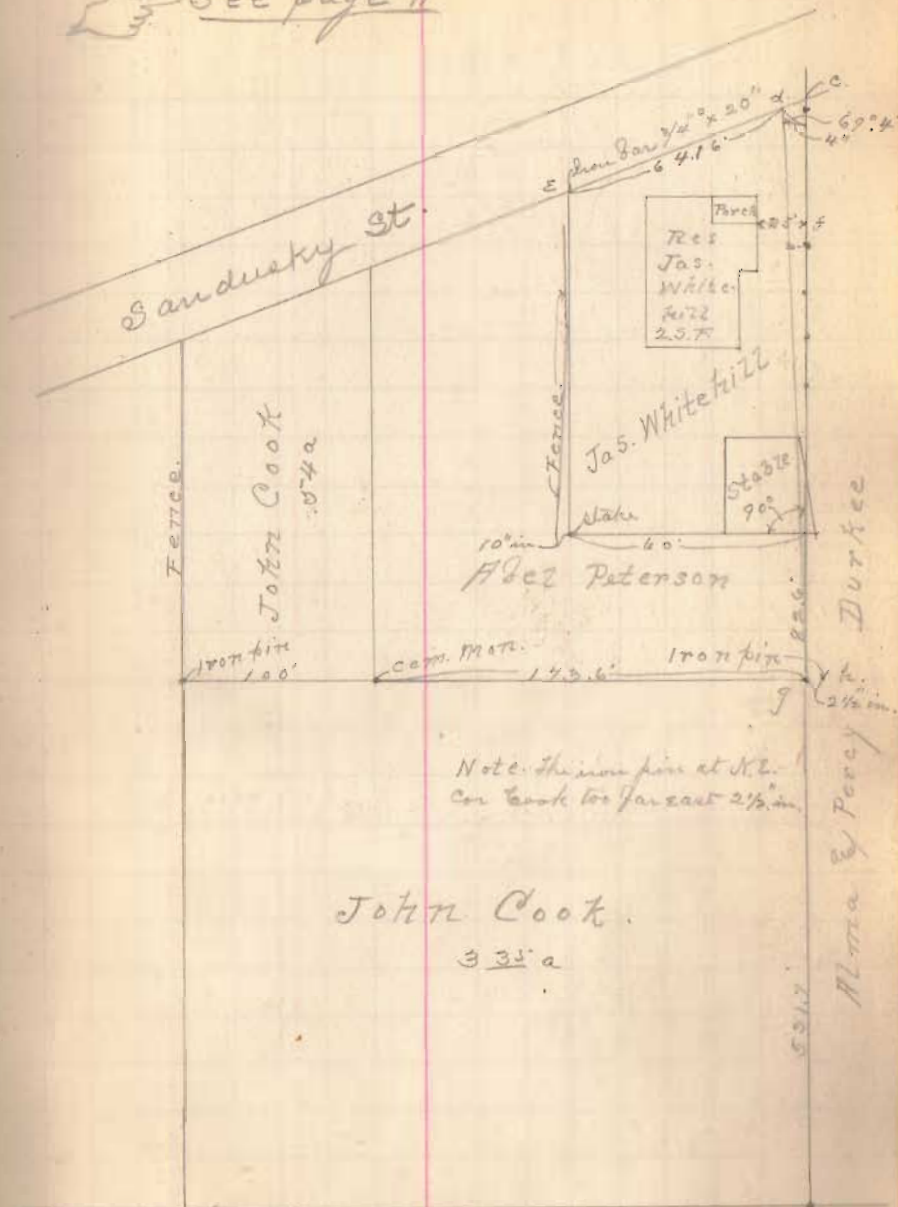
g a piece of 1/2" iron pipe at 2 1/2 inches west of iron pin to iron pin set for SE corner Peterson & or \angle Cook

see page 11 this book

Harry Keller, transit man

See page 11

$$\begin{array}{r} 8.3 \\ 64.16 \\ \hline 72.46 = 677 \end{array}$$



Note: the iron pin at N.E. cor Cook too far east 2 1/2 in

John Cook

33 1/2 a

Rev. B. Baird's Land