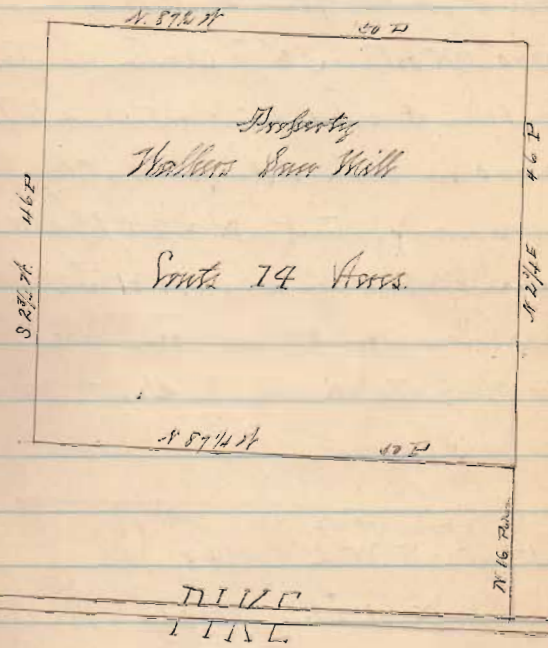


Kauffman pur. of 14 a
 sold to Walkers sawmill
 Course of pike N 87 1/4 W
 Start at stake on west side fence line
 on east to Kauffman about 16 poles
 W of pike. Hence N 23 1/4 E 46 poles
 to N 2 W purchase
 Hence N 87 1/4 W 50 poles to S 7
 " S 23 1/4 W 46 "

46
 50
 4 | 2300
 4 | 575
 14.375
 57 4.88

Kauffman Survey



2227
 U. S. 2007
 J. H. Johnson 1920

Spencer Run

Find stake set by Mr. Newell at small
piece of brick ground at NE \angle lot 40
meas north 39' to center south at
set stake at old \angle brick stones \angle to total
32740 on south side south at

take course of street N = N 83 $\frac{1}{2}$ ° W

Course of street approx = N 81 $\frac{1}{2}$ ° E or 81 $\frac{3}{4}$ °

Meas from creek line town plat

N 81 $\frac{3}{4}$ ° E 76.80 poles to \angle total 32740
on road

Start at ^{2 poles N of} N W \angle lot 48, Spencer lot
thence N 81 $\frac{1}{2}$ ° E, 100 poles to Res. line =
Cottrells line \angle N E \angle lot 51. Strike N 74 $\frac{3}{4}$ °
link-link variation 6 $\frac{1}{4}$ links too much
north. O K Base N 81 $\frac{1}{2}$ ° E.

Line E. start at ∇ set for NE \angle lot 67
S 8 $\frac{1}{2}$ ° E 60 poles to stake set \angle at gate

Line D start at N = S E \angle lot 48,

thence S 81 $\frac{1}{2}$ ° W

At 16 poles pass 5 $\frac{1}{2}$ links south of \angle stake set by
Dunwoody Miller, at 66 poles put in ∇
S E \angle lot 48. Being 18 $\frac{1}{2}$ links south of
line of Board fence.